

Daily Coordination Meeting



Daily Coordination Meeting

General Topics:

- Vandalism Will Not Be Tolerated
- Prepare for Rain in Forecast



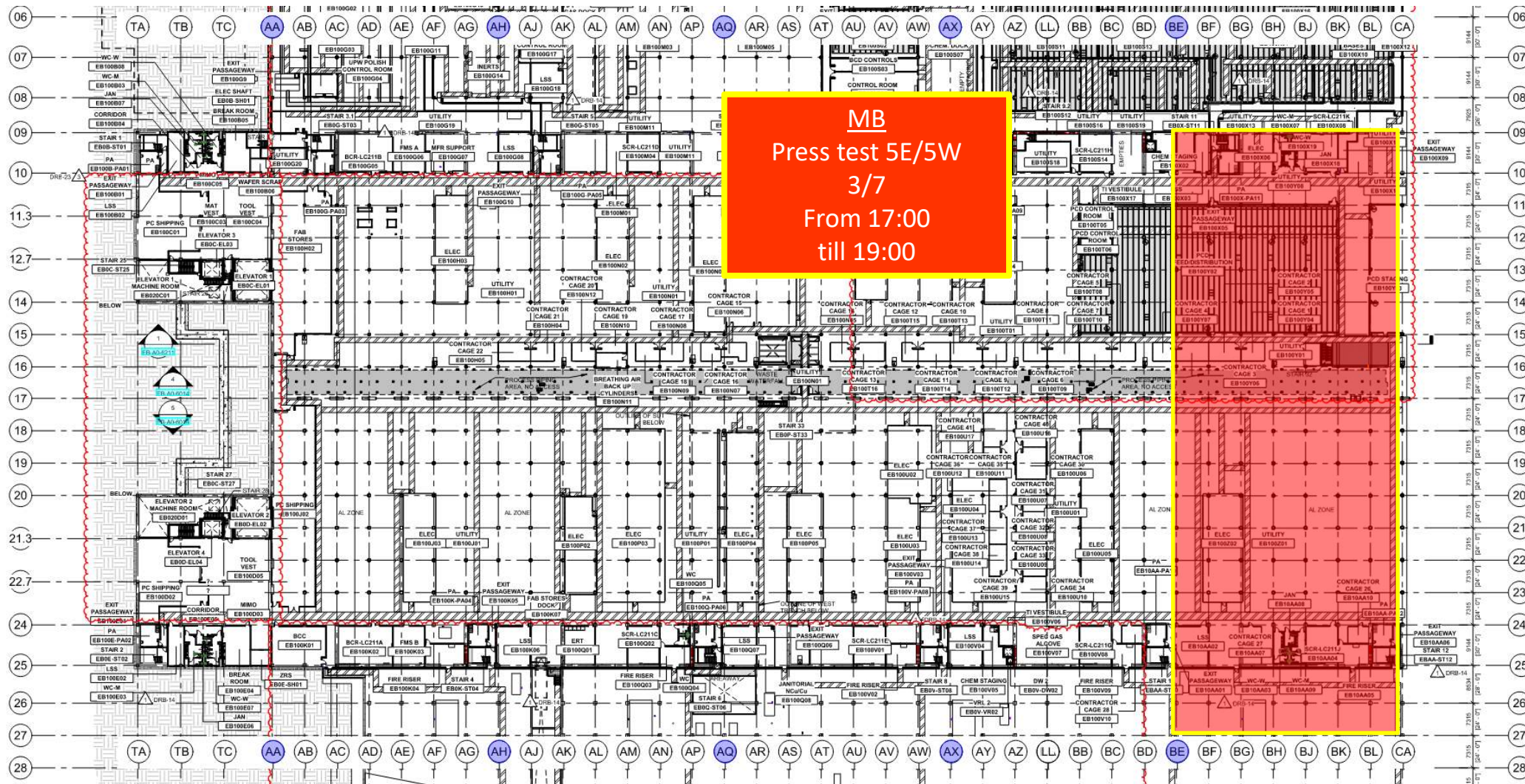
PSSS Scrubber
topping slab
5:00am

Link Ramp/curb
6:00 am

Dock leveler
6:00 am

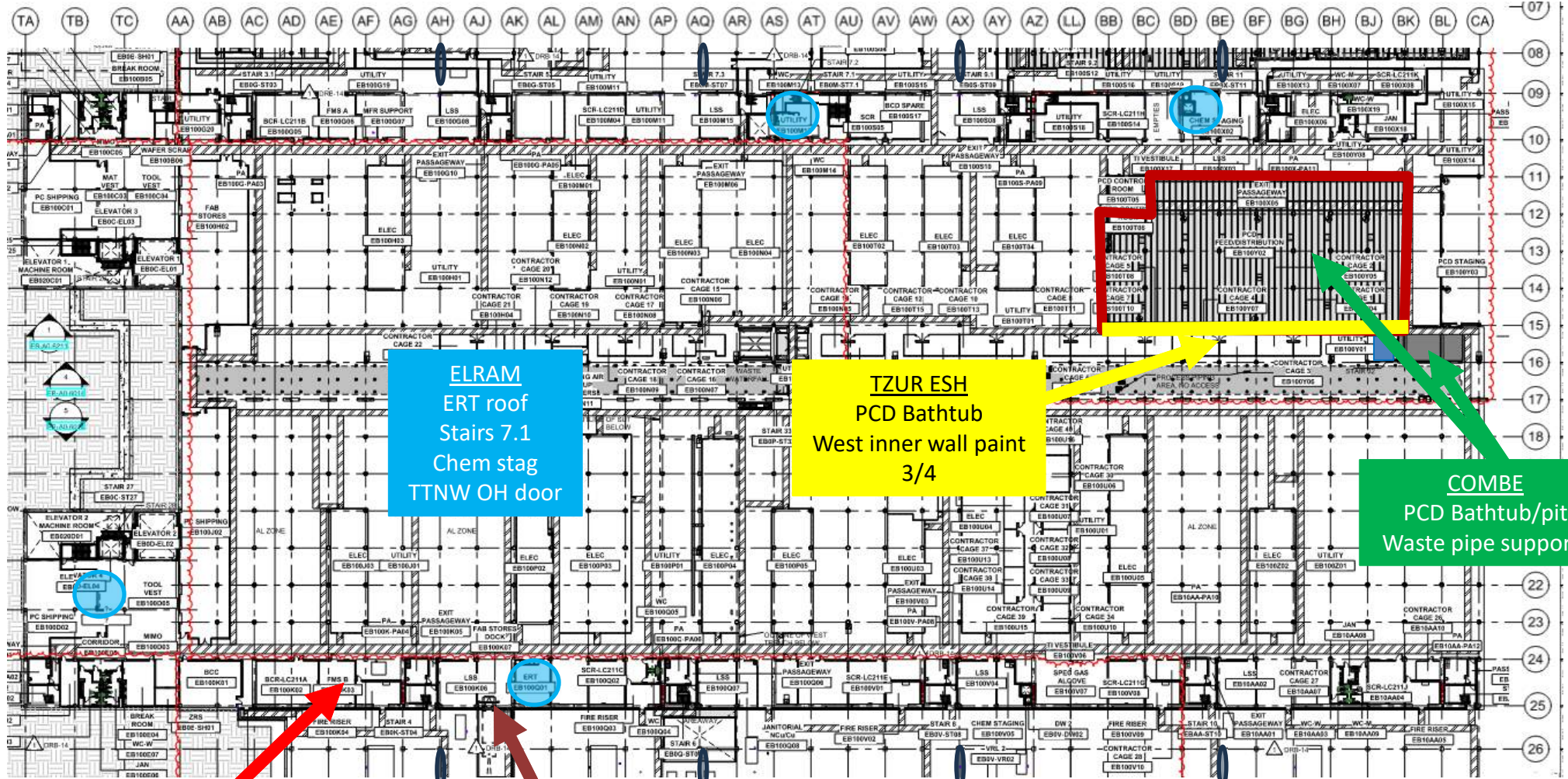


UTILITY LEVEL PRESS TEST





UTILITY LEVEL MOD1



ELRAM
ERT roof
Stairs 7.1
Chem stag
TTNW OH door

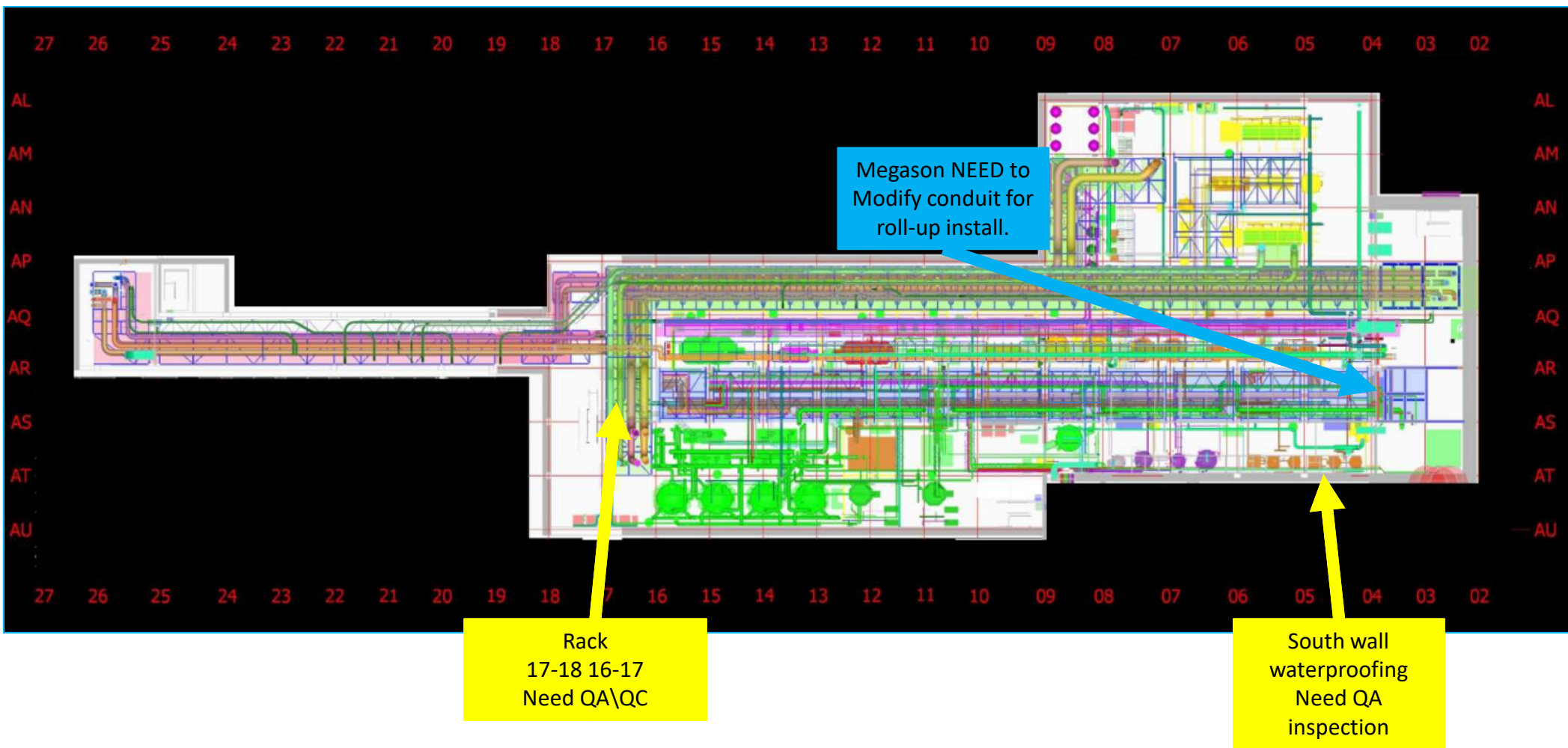
TZUR ESH
PCD Bathtub
West inner wall paint
3/4

COMBE
PCD Bathtub/pit
Waste pipe supports

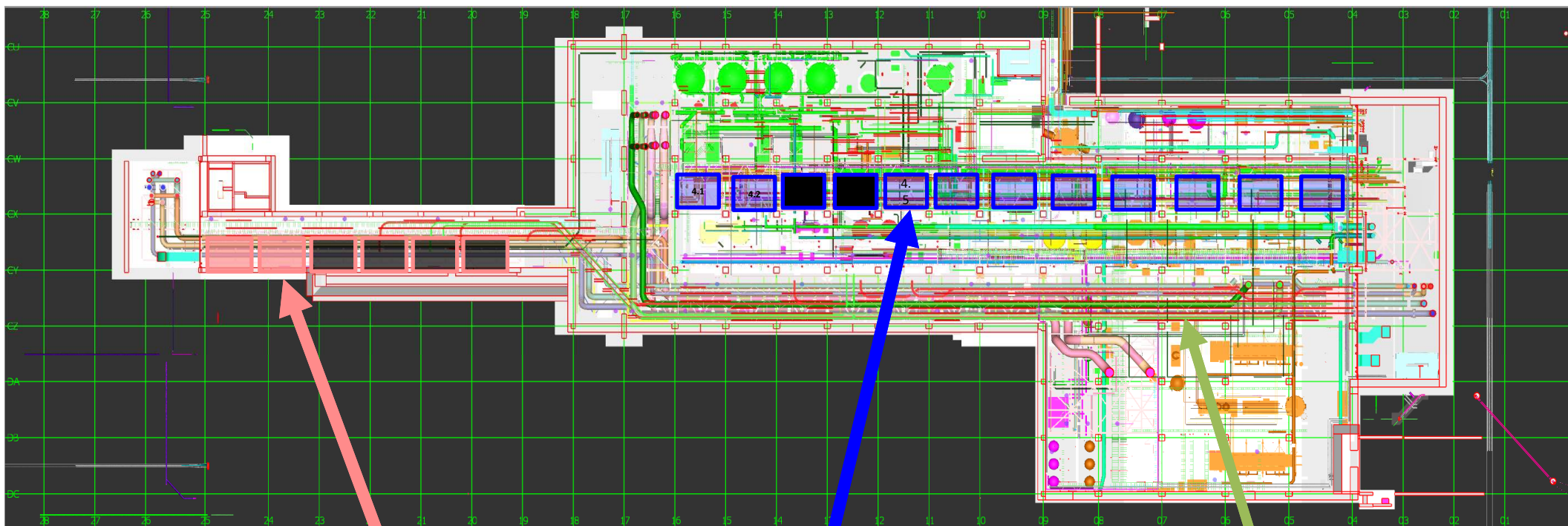
CARMEL DUCT
Remove duct for RHS install
Held

HSI
Slab pour 3/3
HYG
Install RHS 3/4

SUT 38.1 LEVEL



SUT 38.2 LEVEL



Rack 6

16.2.2025	Module 1
17.02.2025	Module 2
24.02.2025	Module 3
25.02.2025	Module 4
03.03.2025	Module 5
04.03.2025	Module 6

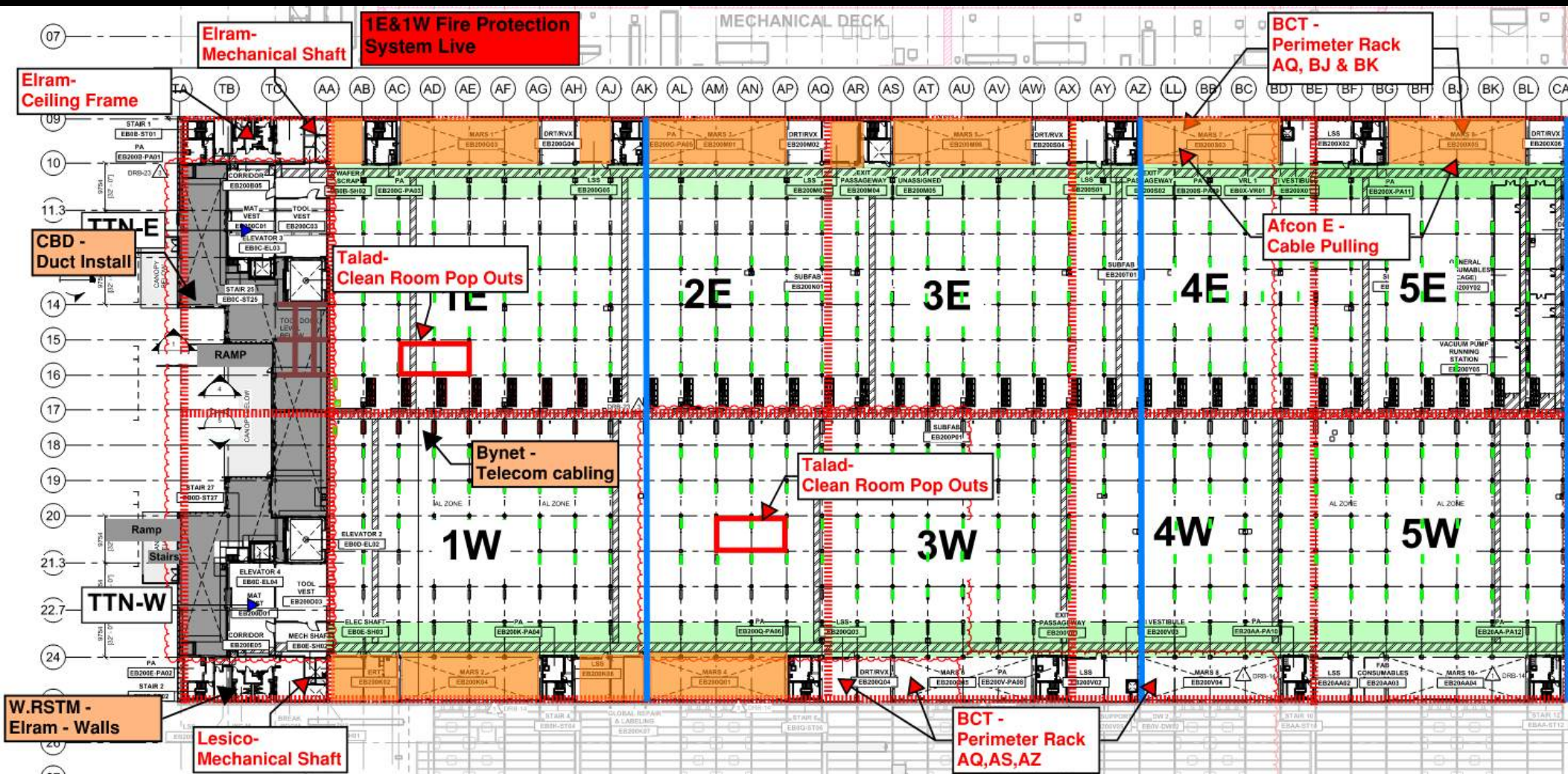
Rack 4 Upper

Lifting schedule:
 M#4.5 – 4/3/25
 M#4.6 – 6/3/25
 M#4.7 – 10/3/25

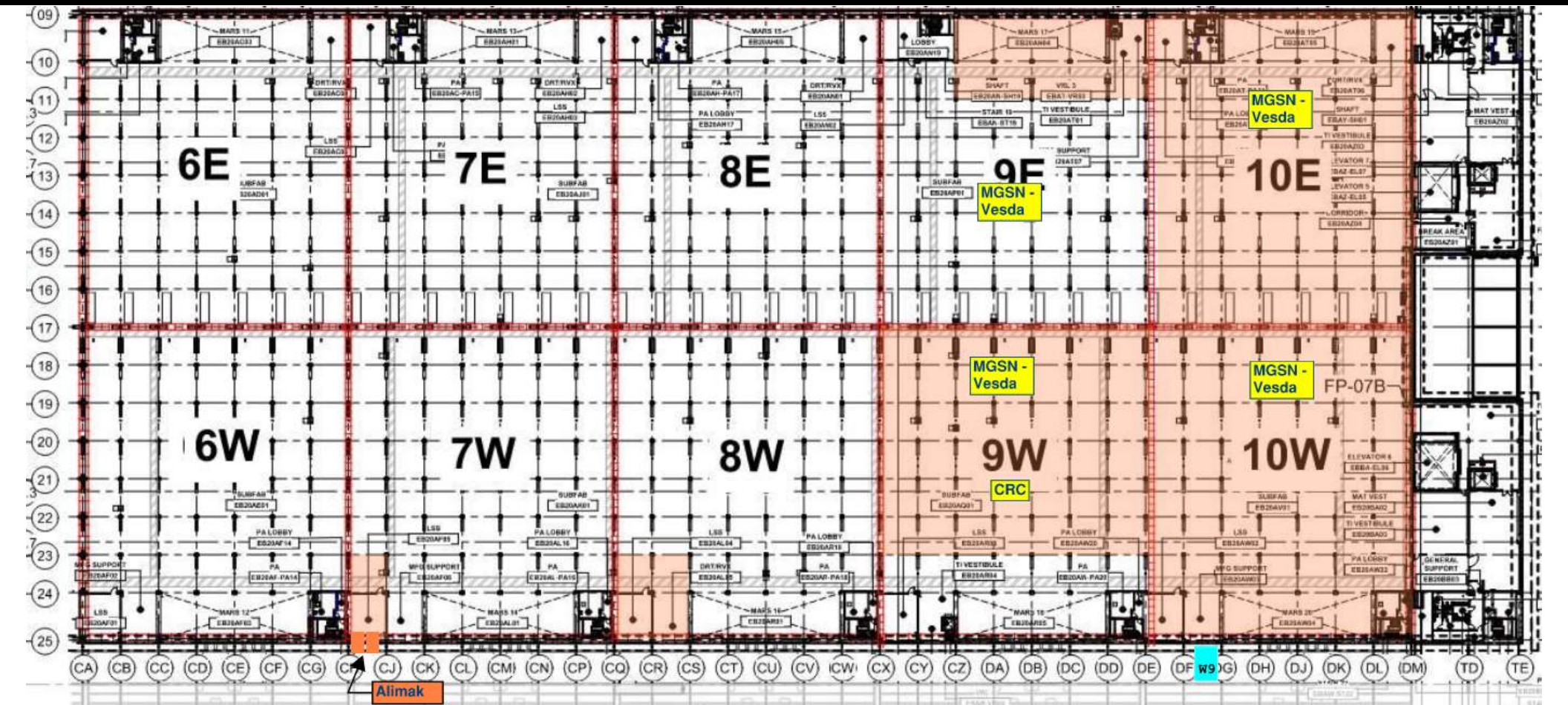
Rack 2

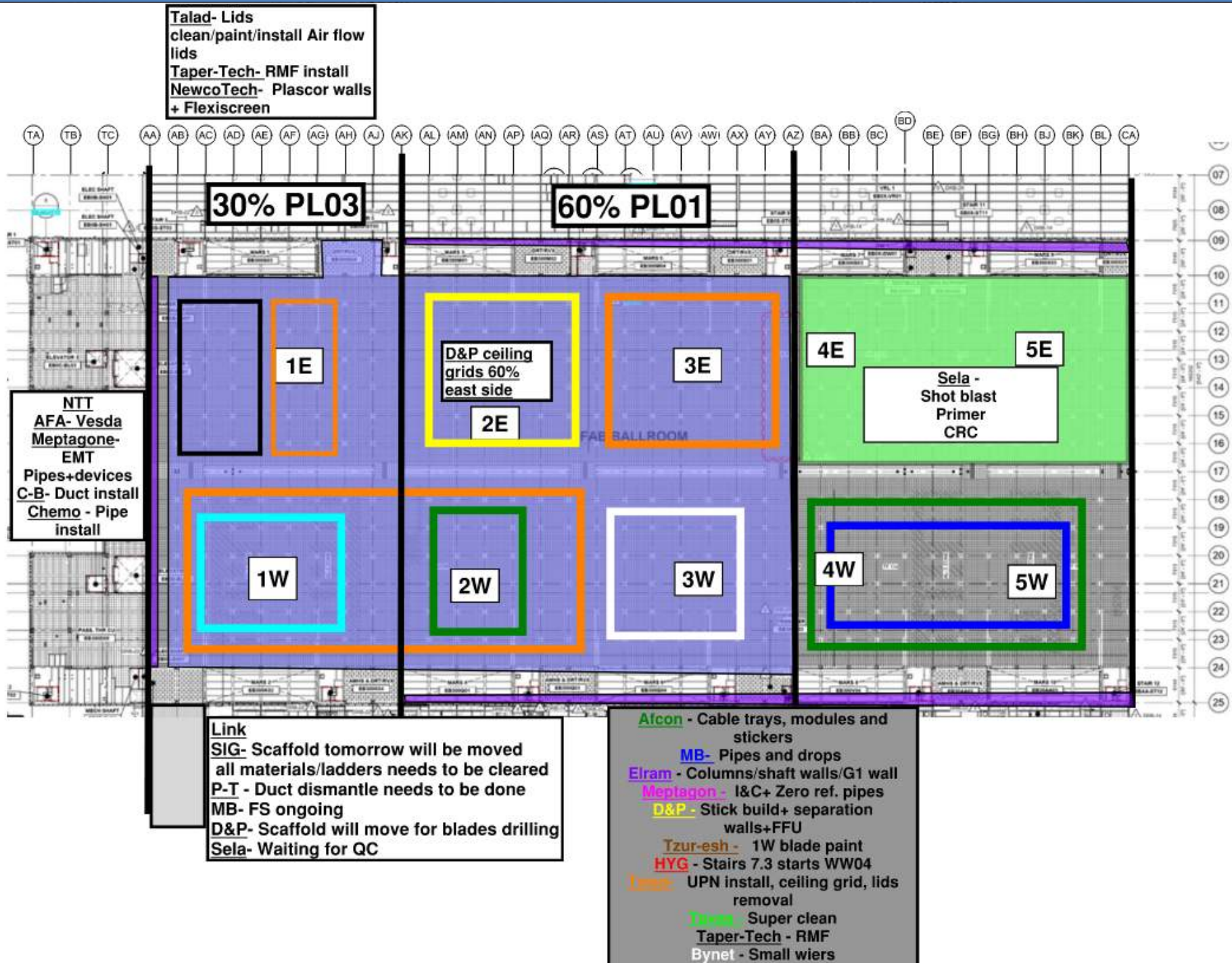
Piping
 connection

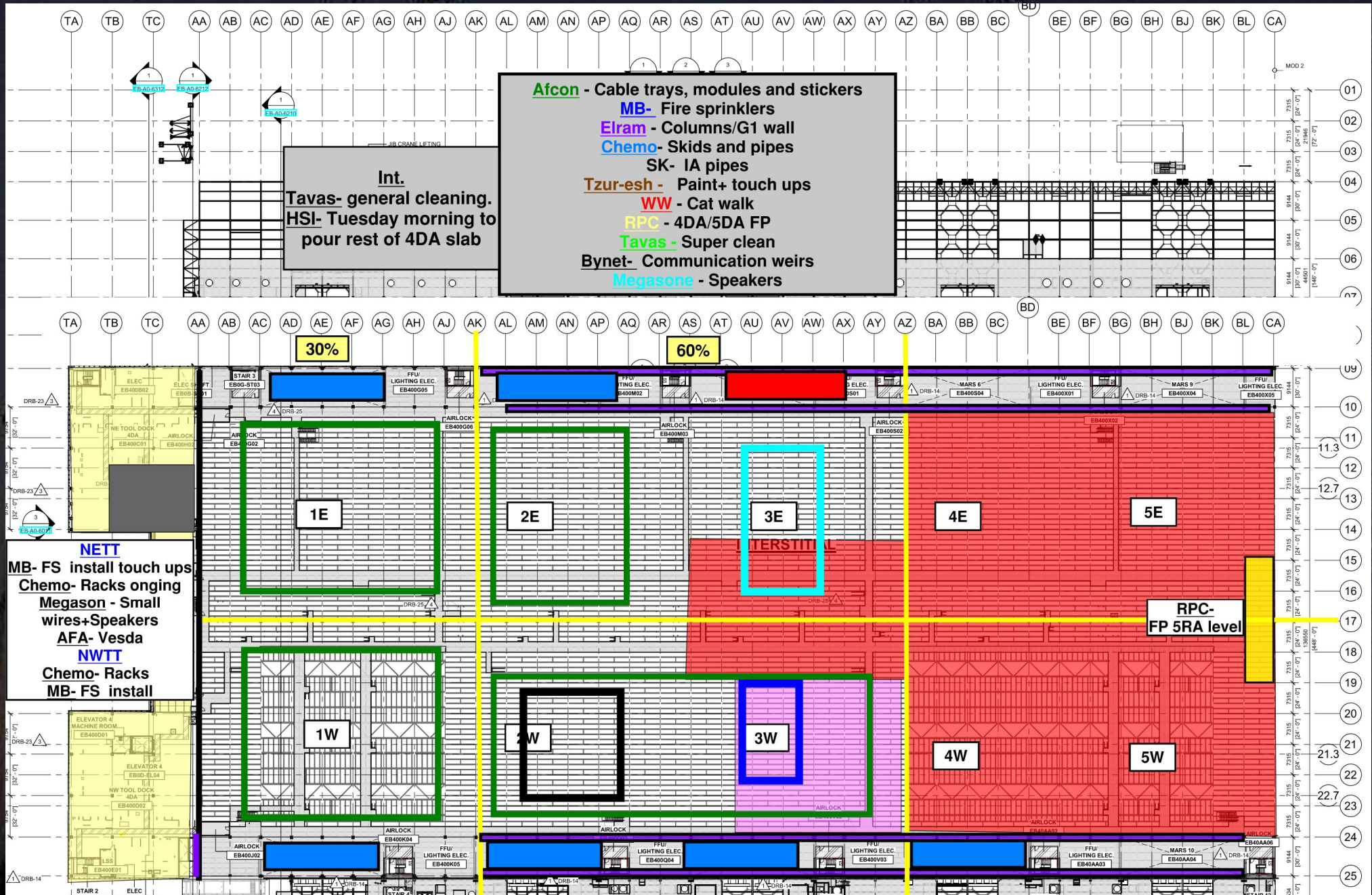
SUBFAB BUILDOUT MOD 1

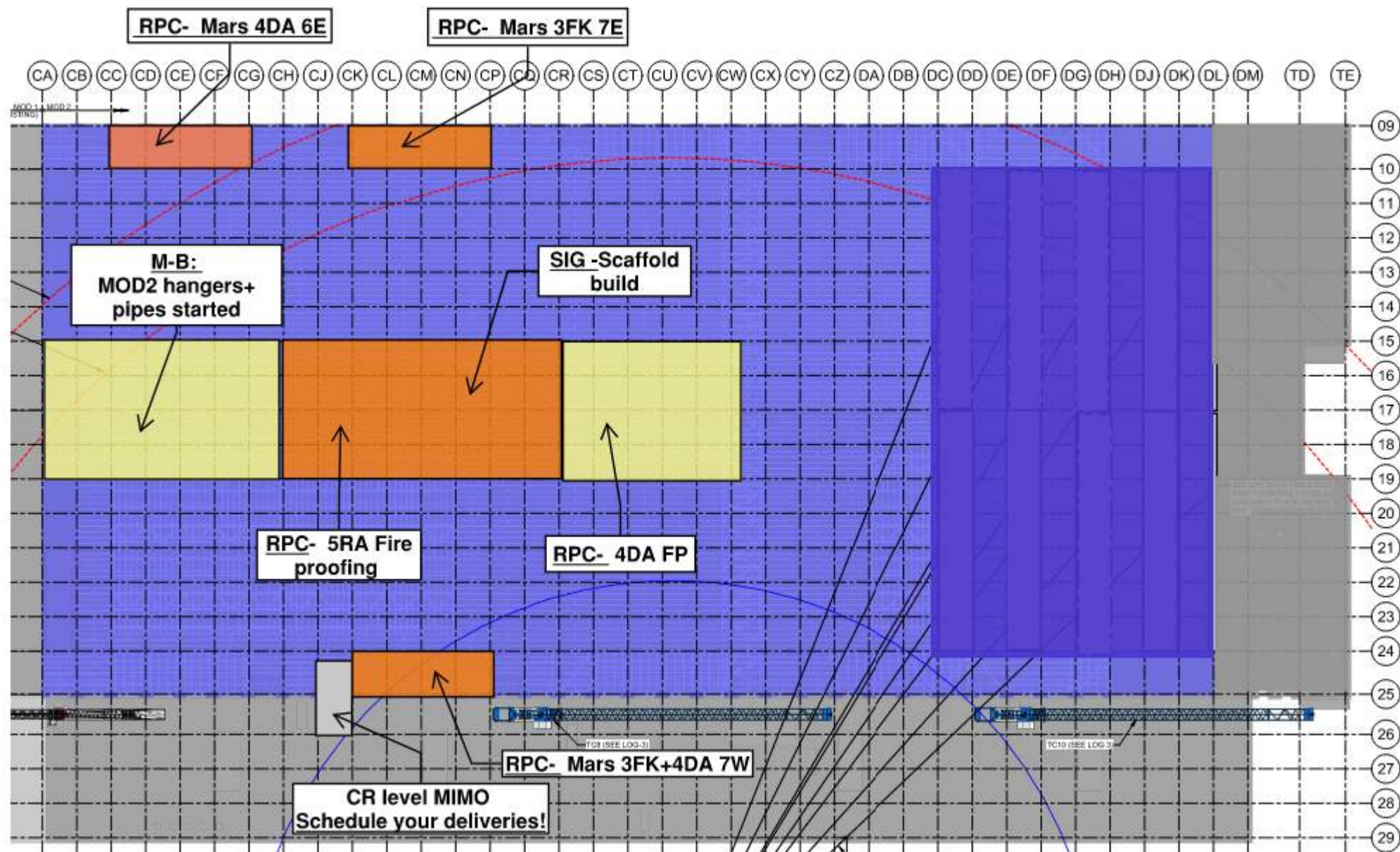


SUBFAB BUILDOUT MOD 2

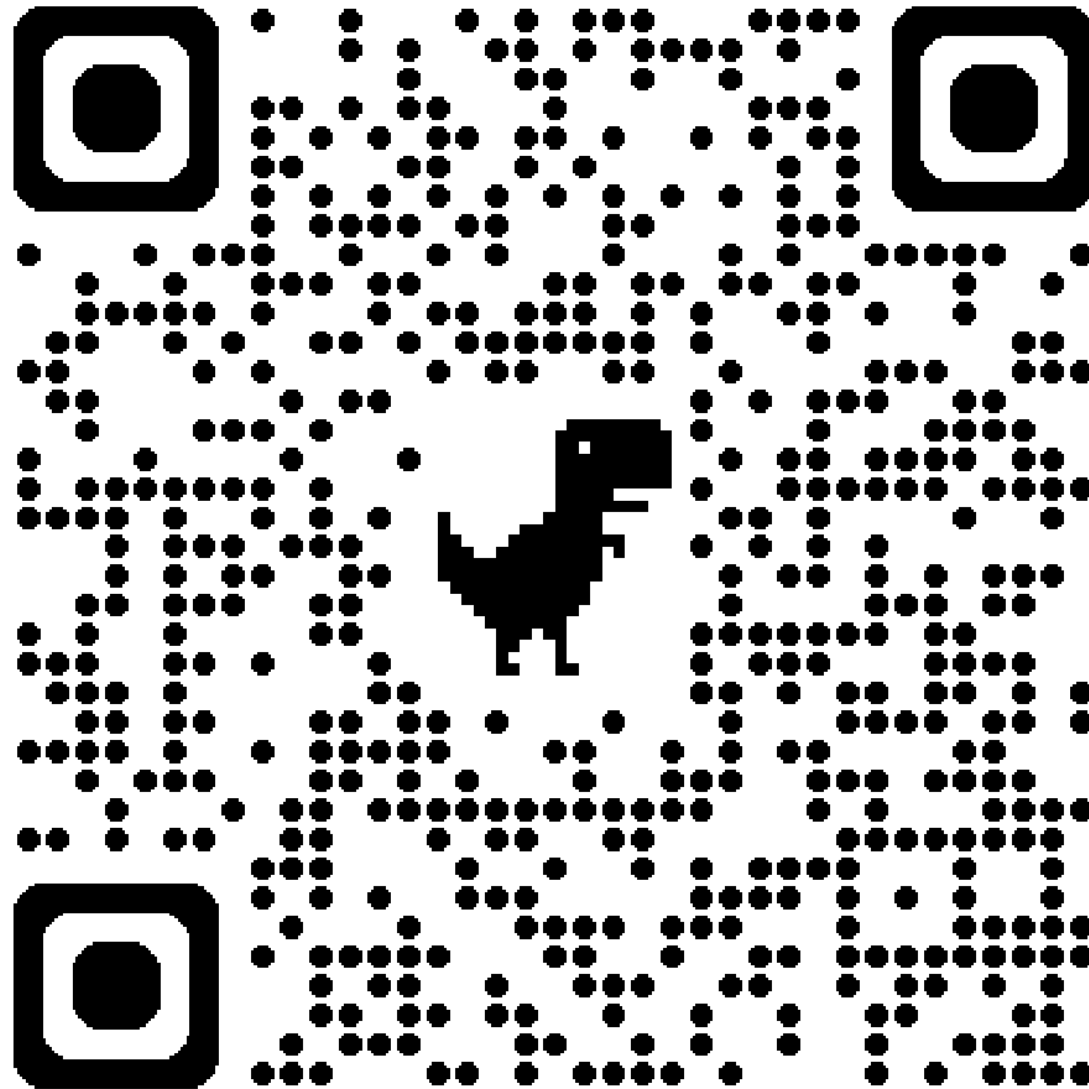




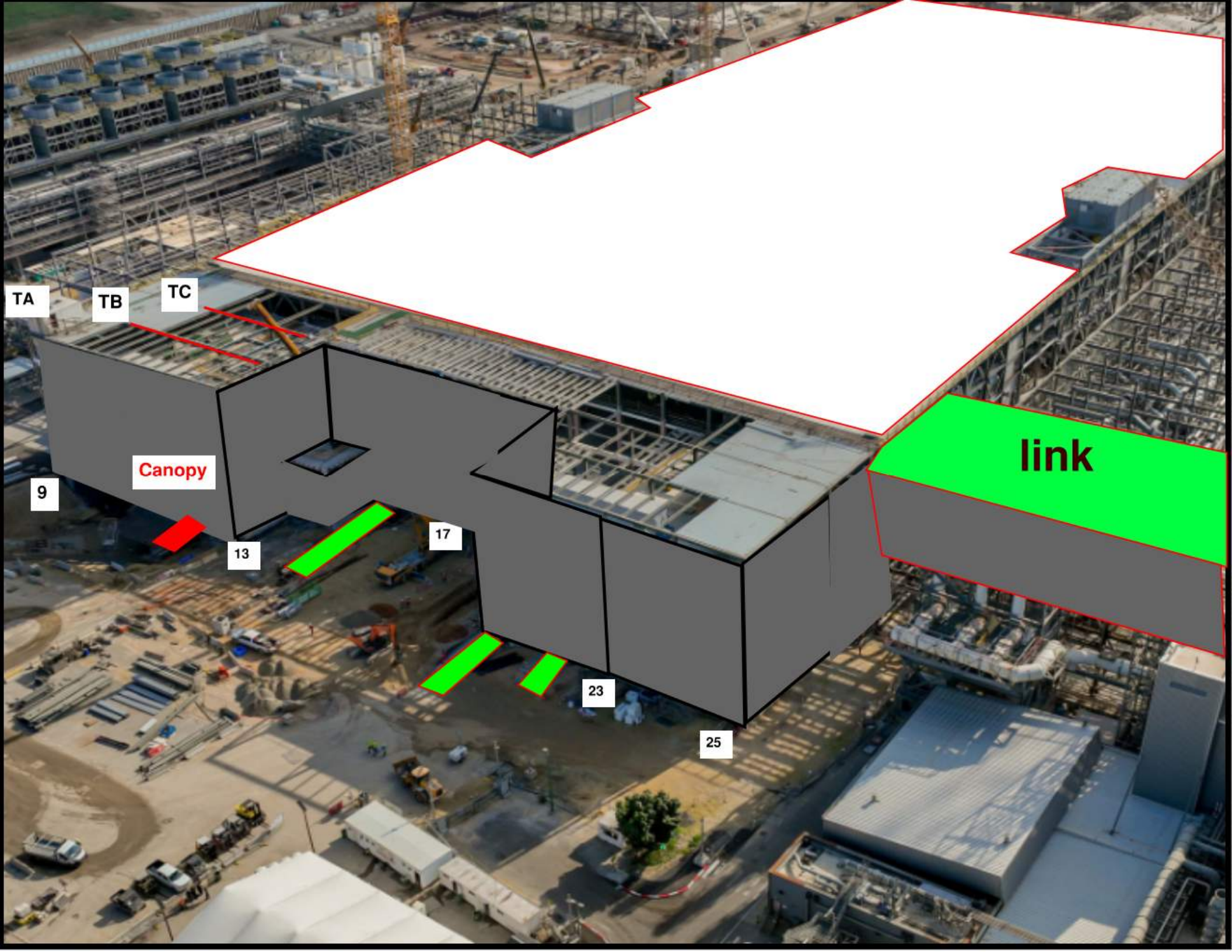




Siding Penetration Request Form



Subcontractor must fill out and submit all required cells in order to get a penetration cut through the siding.



TA

TB

TC

Canopy

9

13

17

23

25

link



MOD 2 EASTSIDE GIRTS/SIDING

2752/ 2751	2742/ 2741	2732/ 2731	2722/ 2721	2712/ 2711	2552/ 2551	2542/ 2541	2532/ 2531	2522/ 2521	2512/ 2511	2502/ 2501

READY FOR GIRTS	
INSTALLING GIRTS	
READY FOR PANELS	
PANELS INSTALLED	

MOD 2 WESTSIDE GIRTS/SIDING

READY FOR GIRTS 

INSTALLING GIRTS 

READY FOR PANELS 

PANELS INSTALLED 

2602/
2601

M
I
M
O

2612/
2611

MIMO
2622/
2621

2632/
2631

2642/
2641

2652/
2651

2812/
2811

2822/
2821

2832/
2831

2842/
2841

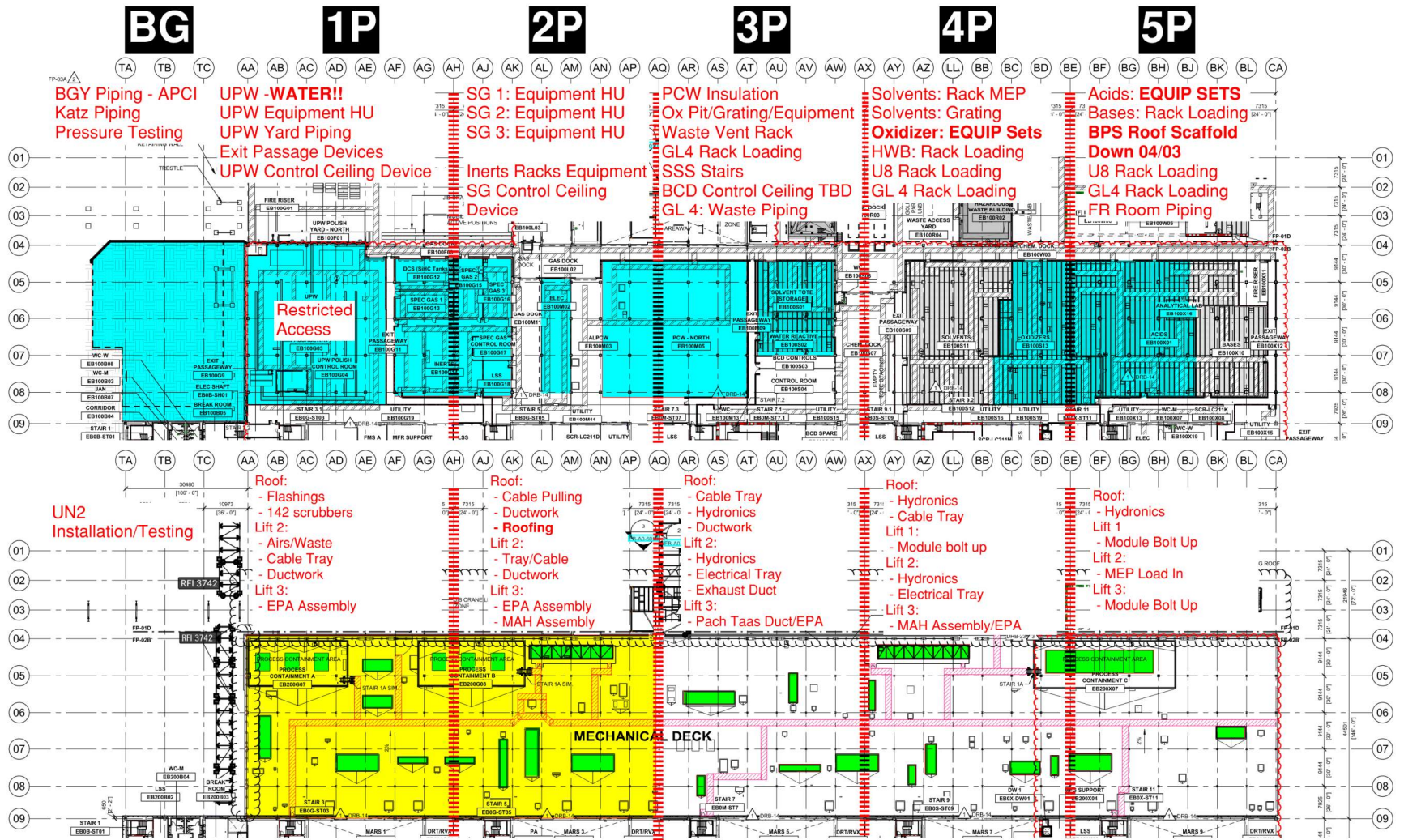
2852/
2851

PSSS.1

Utility Level

1YA

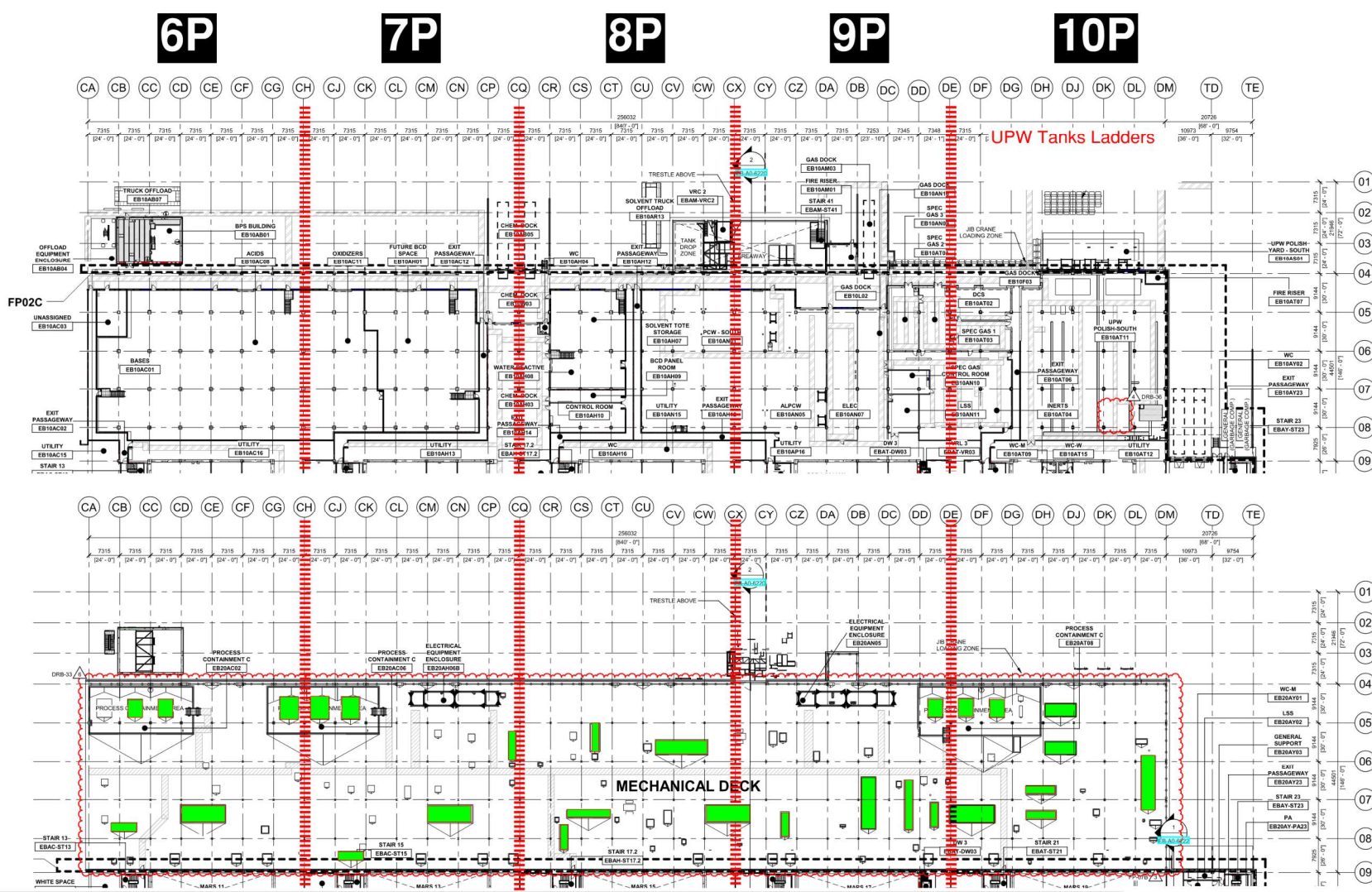
PSSS Roof 2SA



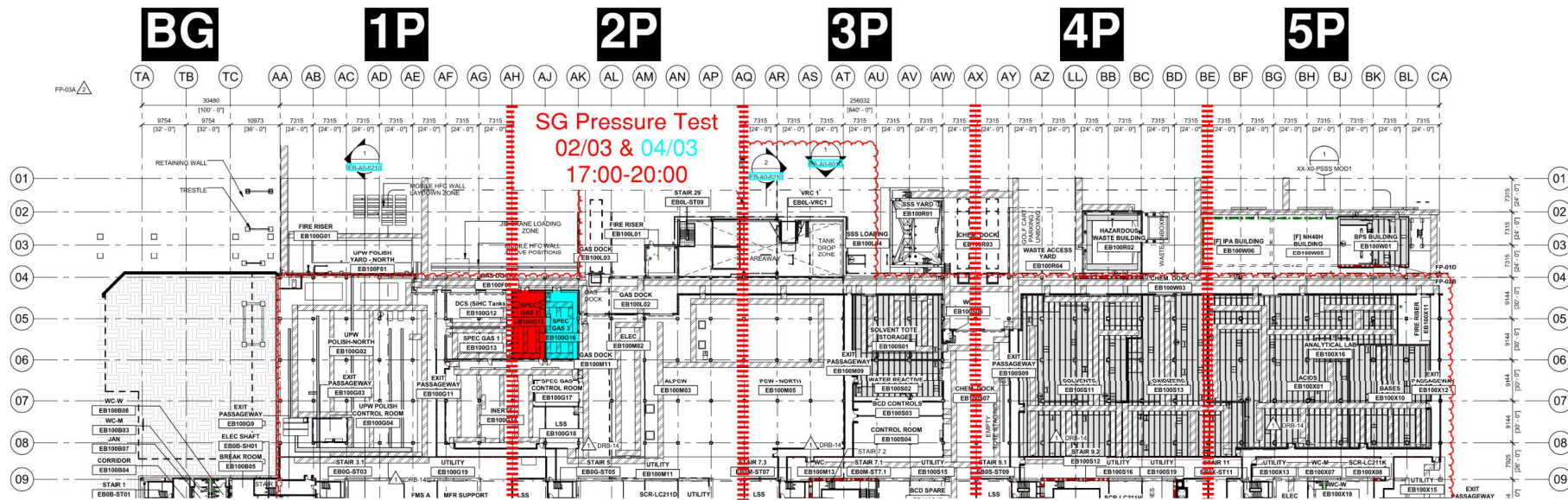
PSSS.2

Utility Level
1YA

PSSS Roof
2SA

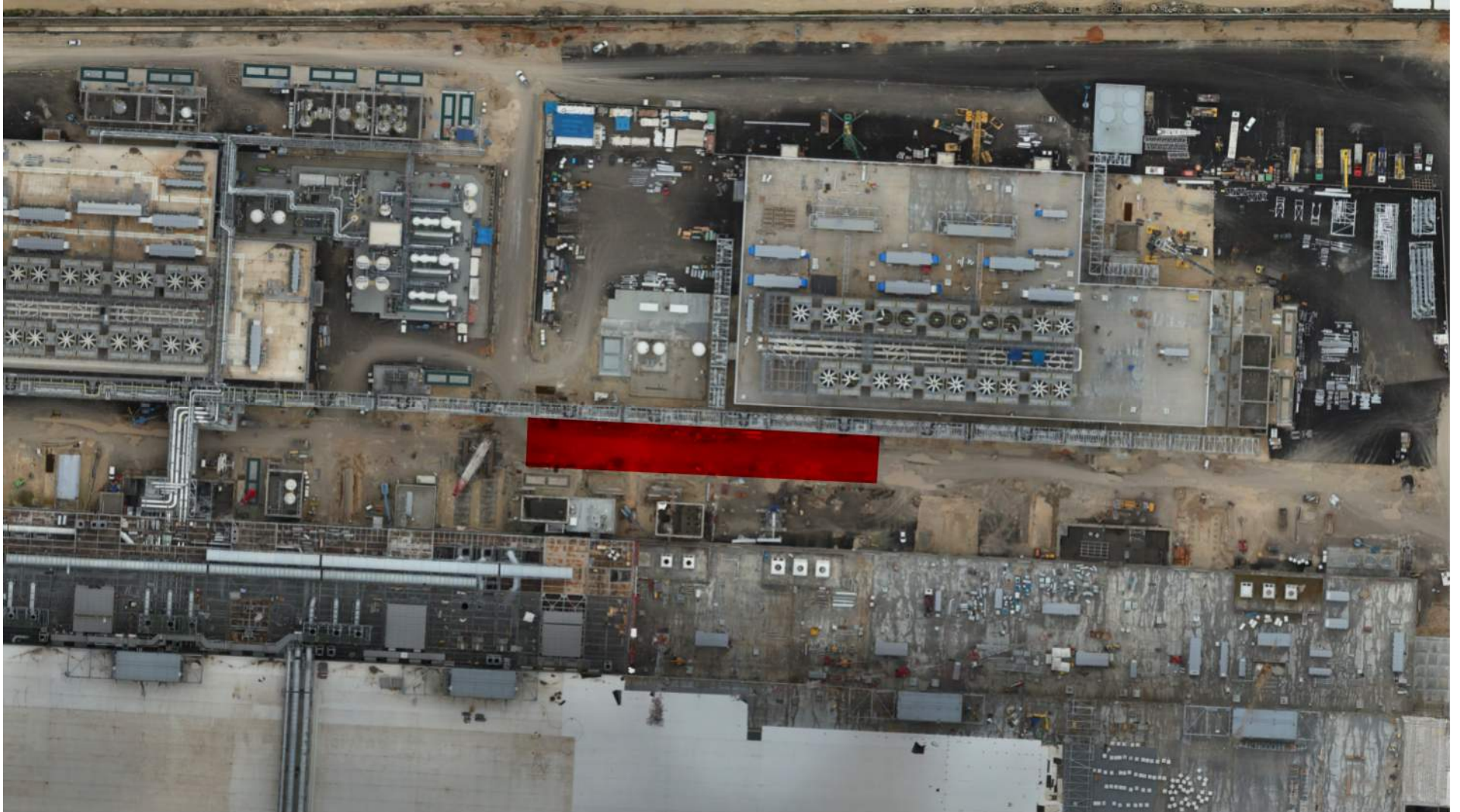


PSSS Pressure Testing

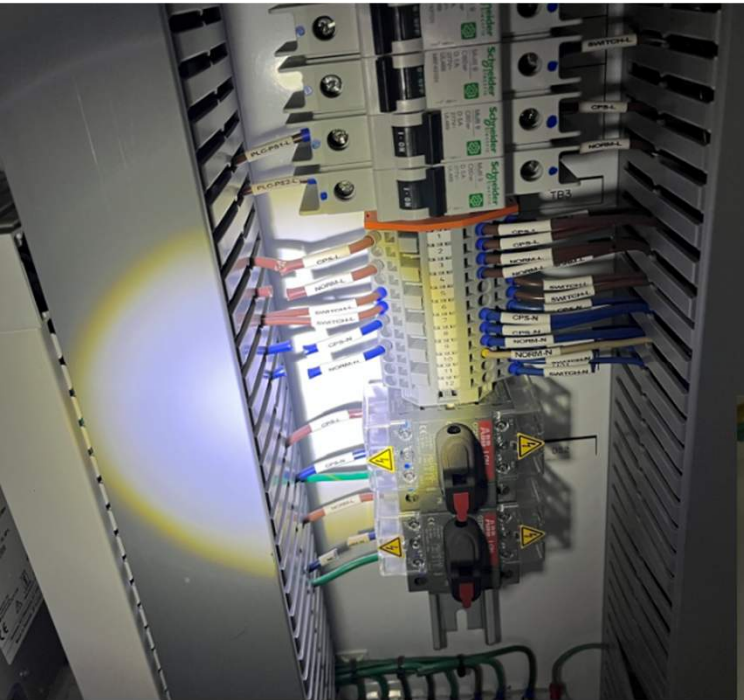


Utility Level
1YA

3800 Dismantle WW10



Trade Damage





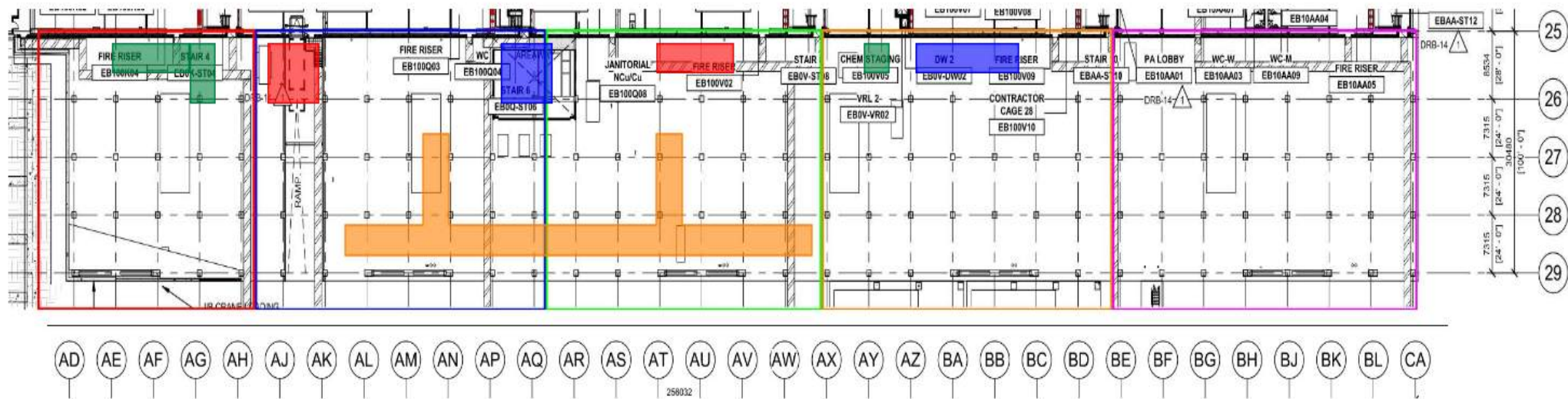
WJG – UL

* Megason - working on fire detection and alarm

* Afcon - installation of permanent lighting and cable pulling.
* Pach Taas - installation of modules in west SUT.
* Carmel Bidud - working on dampers and ducts into the FAB

* Afcon - installation of permanent lighting and cable pulling to the fixtures.
* Pach Taas - installation of wall penetrations

* SK - installation of 3" cooper pipe
* W&W - welding of shims for outriggers



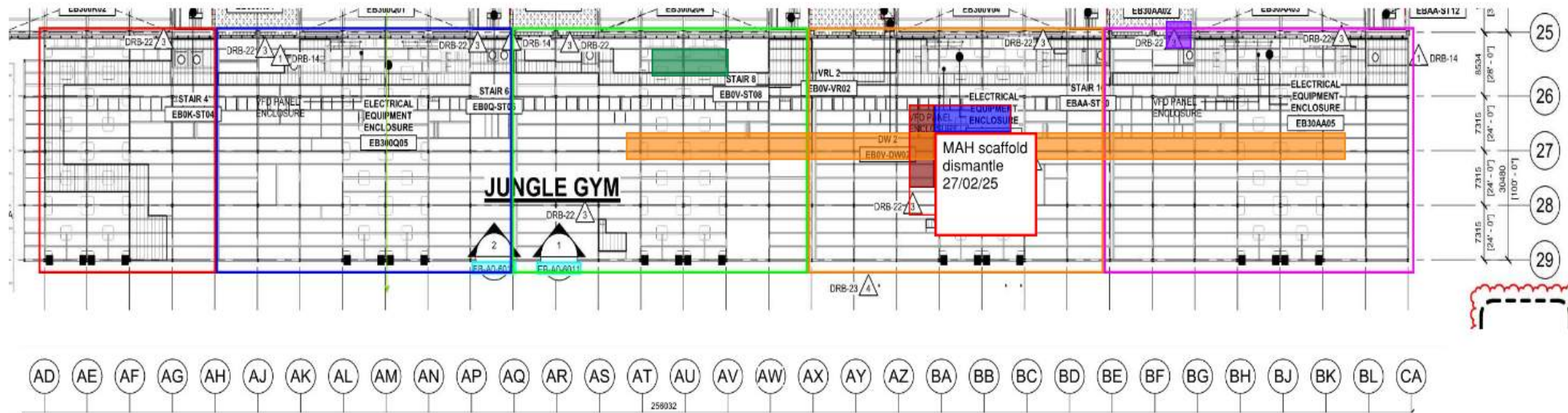


WJG – Lift 2

* Pach Taas - installation of 1800 mm module and WP.

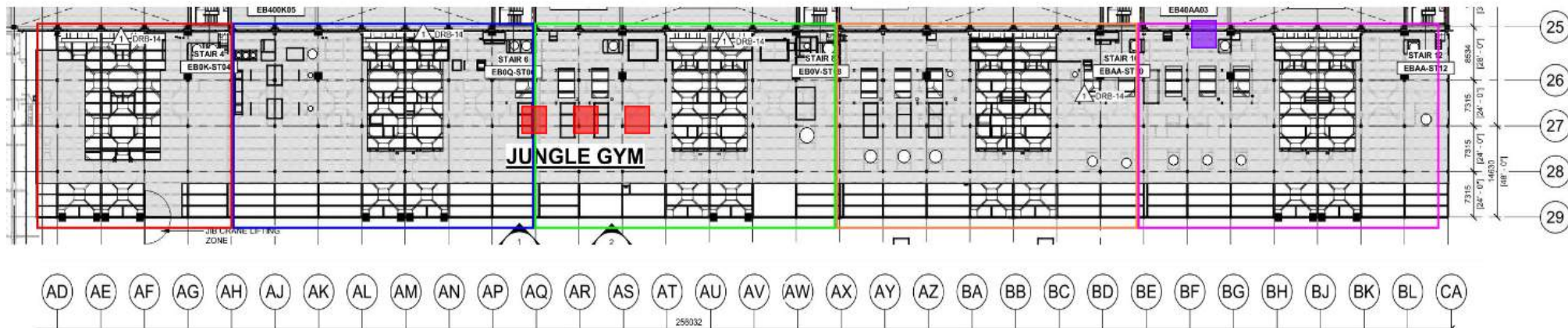
* SK - installation of CRW pipes to MAH.
* Afcon - pulling cables and doing connections to MAH.
* 4J MAH scaffold will be dismantled on 27/02/25

* Chemo Aharon - finishing Insulation and filling UPN 117 with water for pressure test.
* Chemo - pipe fitting for MARS pipes



WJG – Lift 3

		* Pach Taas - working on bypass ductworks.		* Chemo - pipe fitting for MARS pipes
--	--	--	--	---------------------------------------



Pressure check for UPN 117 – UL

UL level(West JG) - Grids AL to
BJ, 25 to 27



Pressure check for UPN 117 – LIFT2

Lift 2 - Grids AL to BJ, 25 to 27



Crane logistics

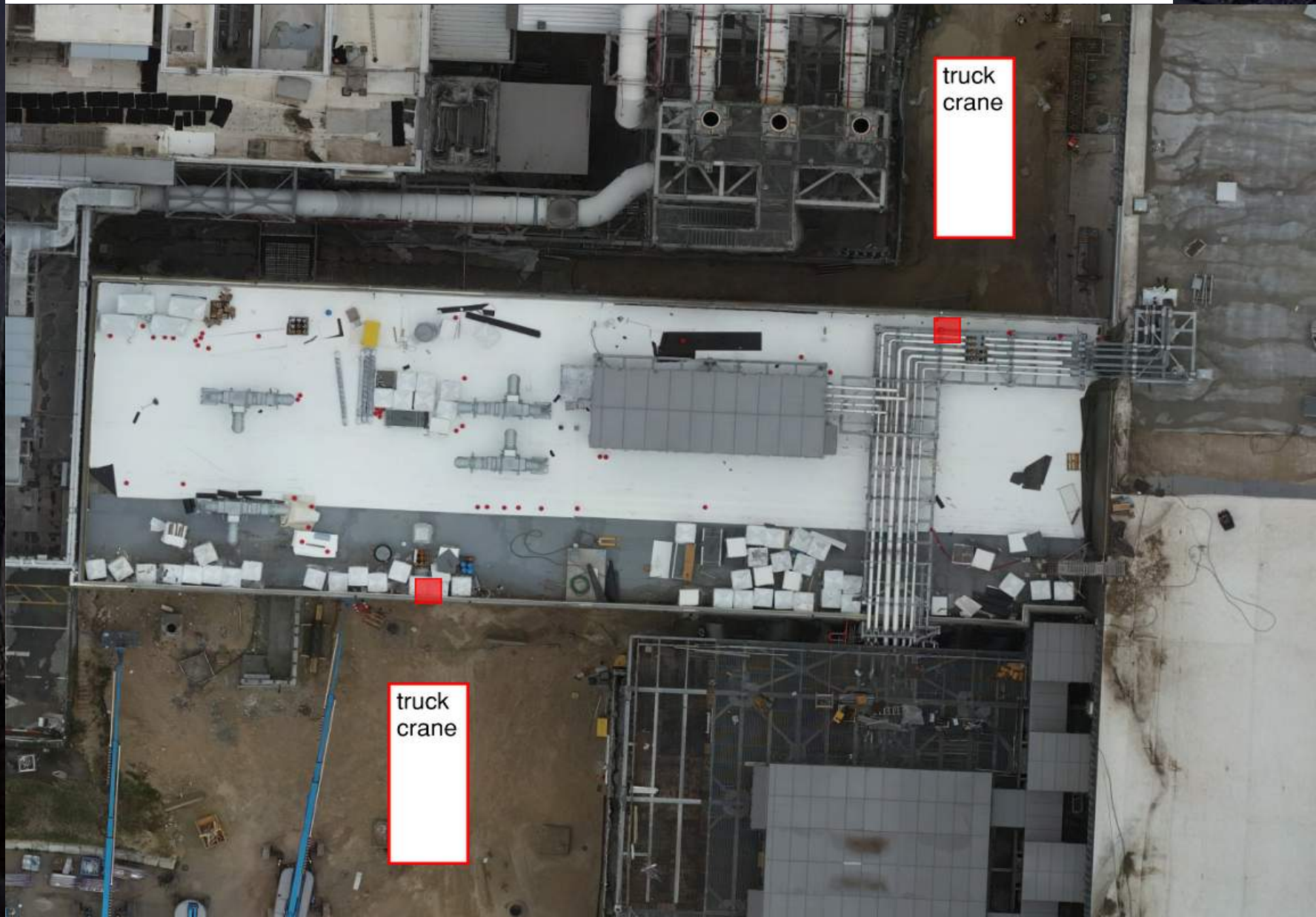
Crane: 500 ton crane
location: AQ on west
road

Crane: 650 ton crane
location: BE-BK on west
road. waiting for crane
pad build.



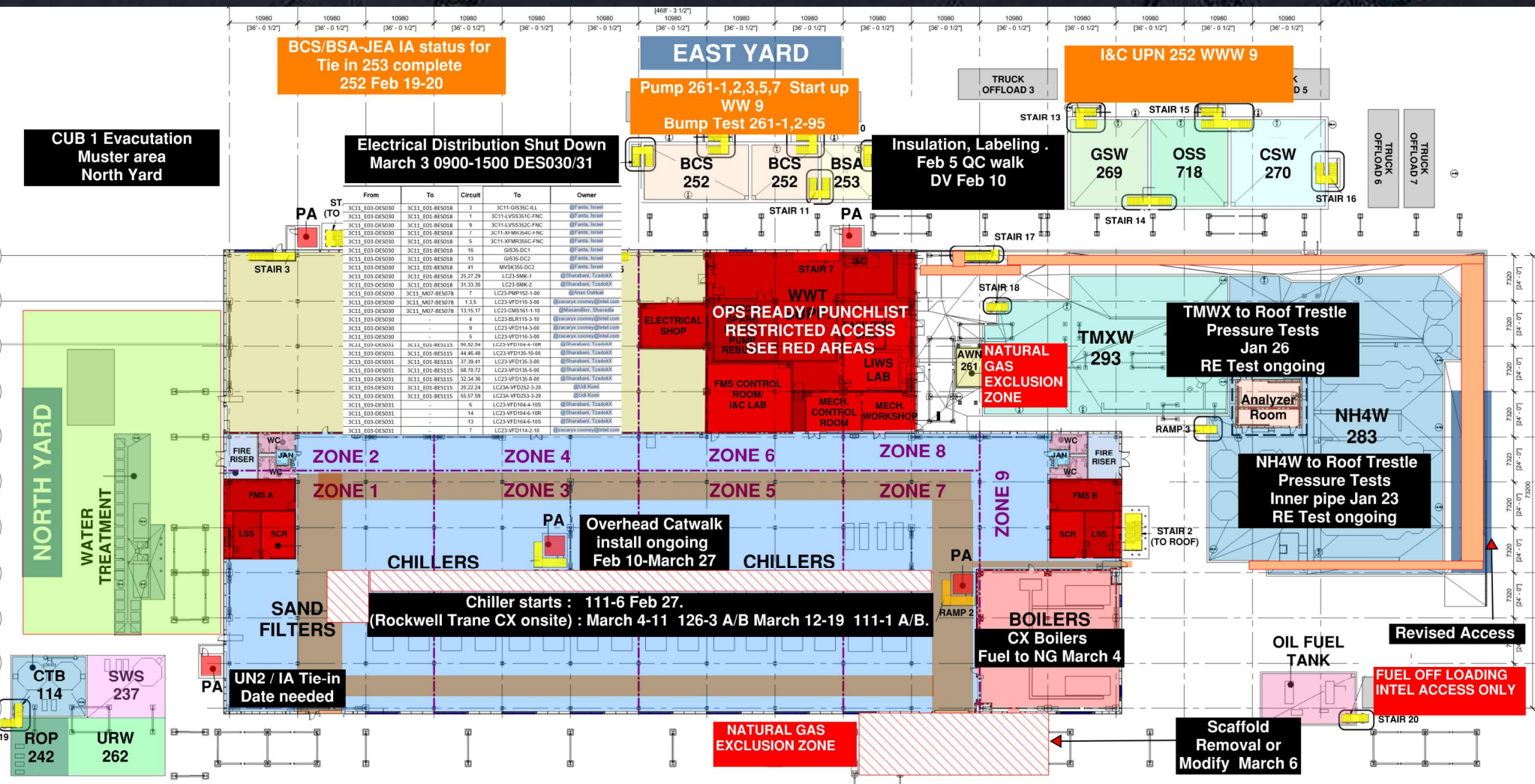


Removal of temp columns



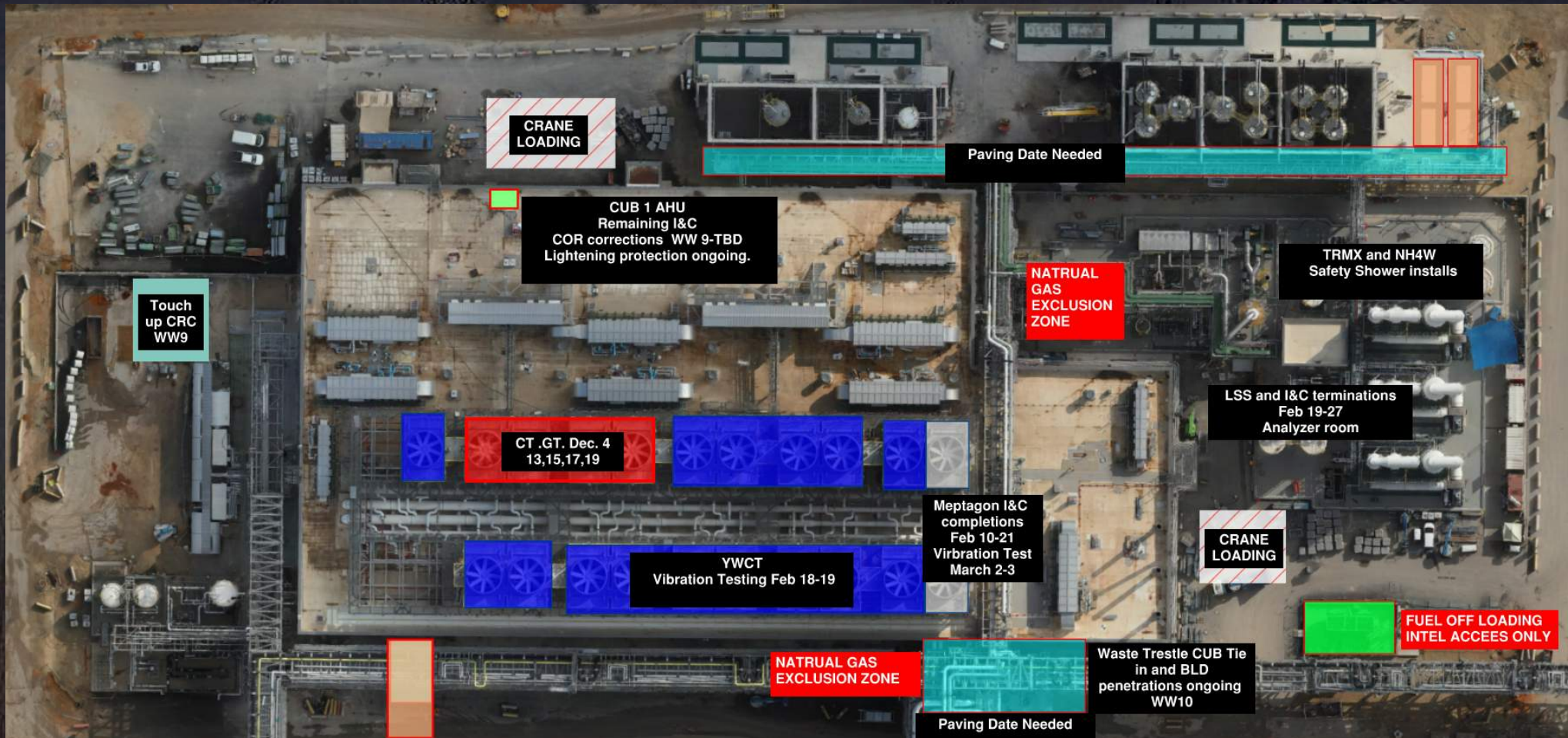


CUB 1

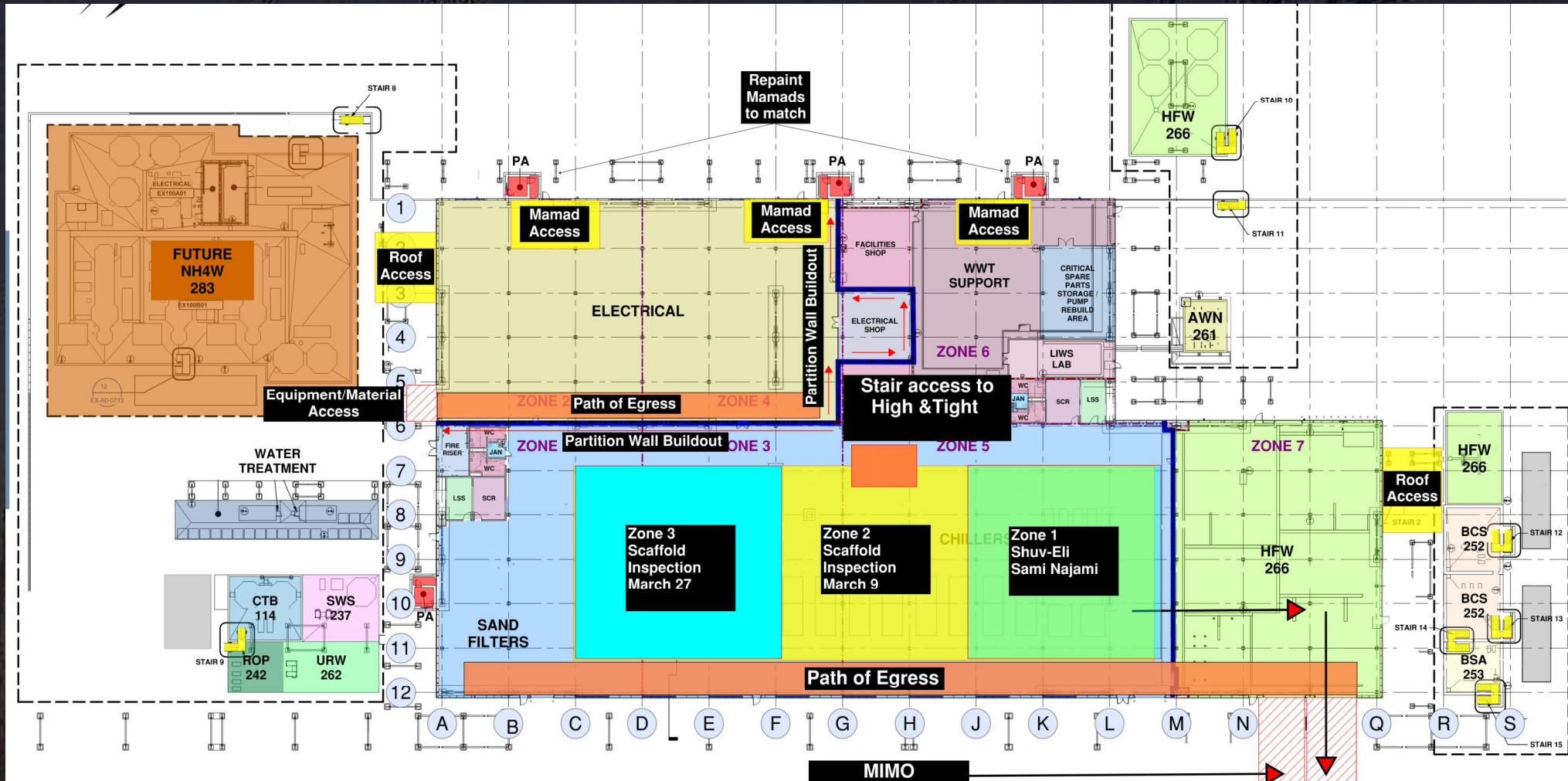


- Waste Systems Pressure Testing Wrap up 3d March 4-5
- Trestle Scaffold removal 5d March 6-11
- Metal flashings and Panel work Man Door 5-7d March 12-20
- Claim Envelope ready for DVs March 20
- DV acceptance list and corrections 7d April 2
- Ops Ready April 3
- Concrete removal Site Grading Form rebar pour concrete 5-7 d March 23-March 31
- Bullards 2d April 1-2

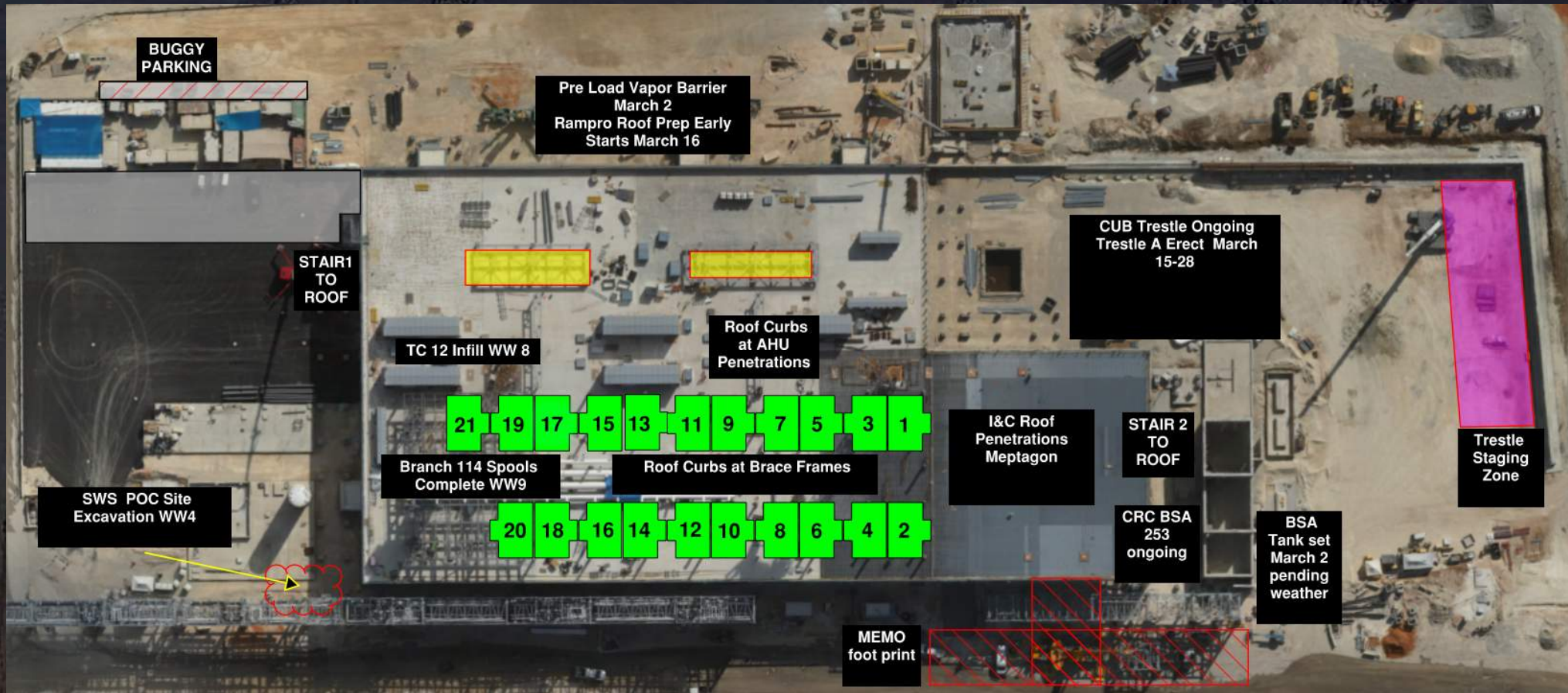
CUB 1 – EXTERIOR/ROOF

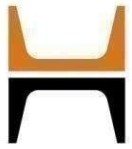


CUB 2- Load in ,H&T, Framing and Sheetrock

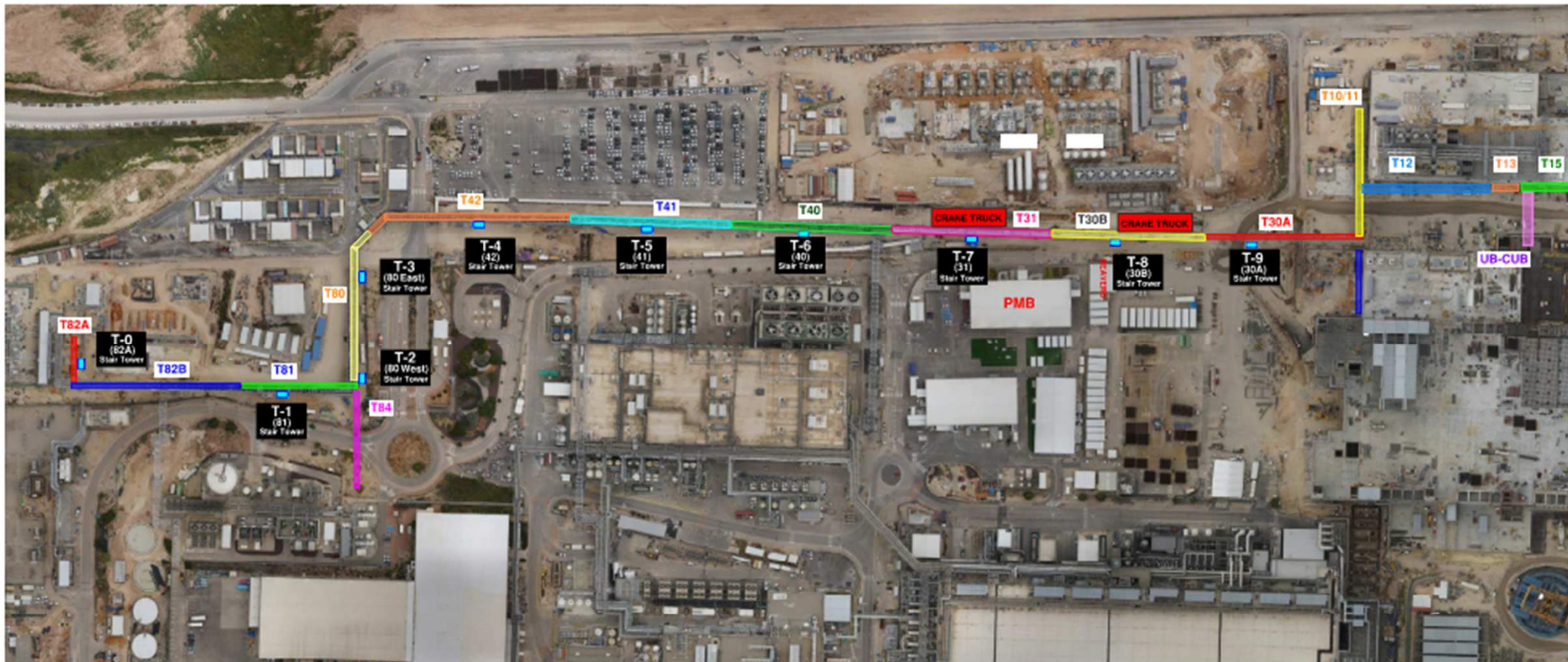


CUB 2 – EXTERIOR/ROOF





HOFFMAN CONSTRUCTION COMPANY





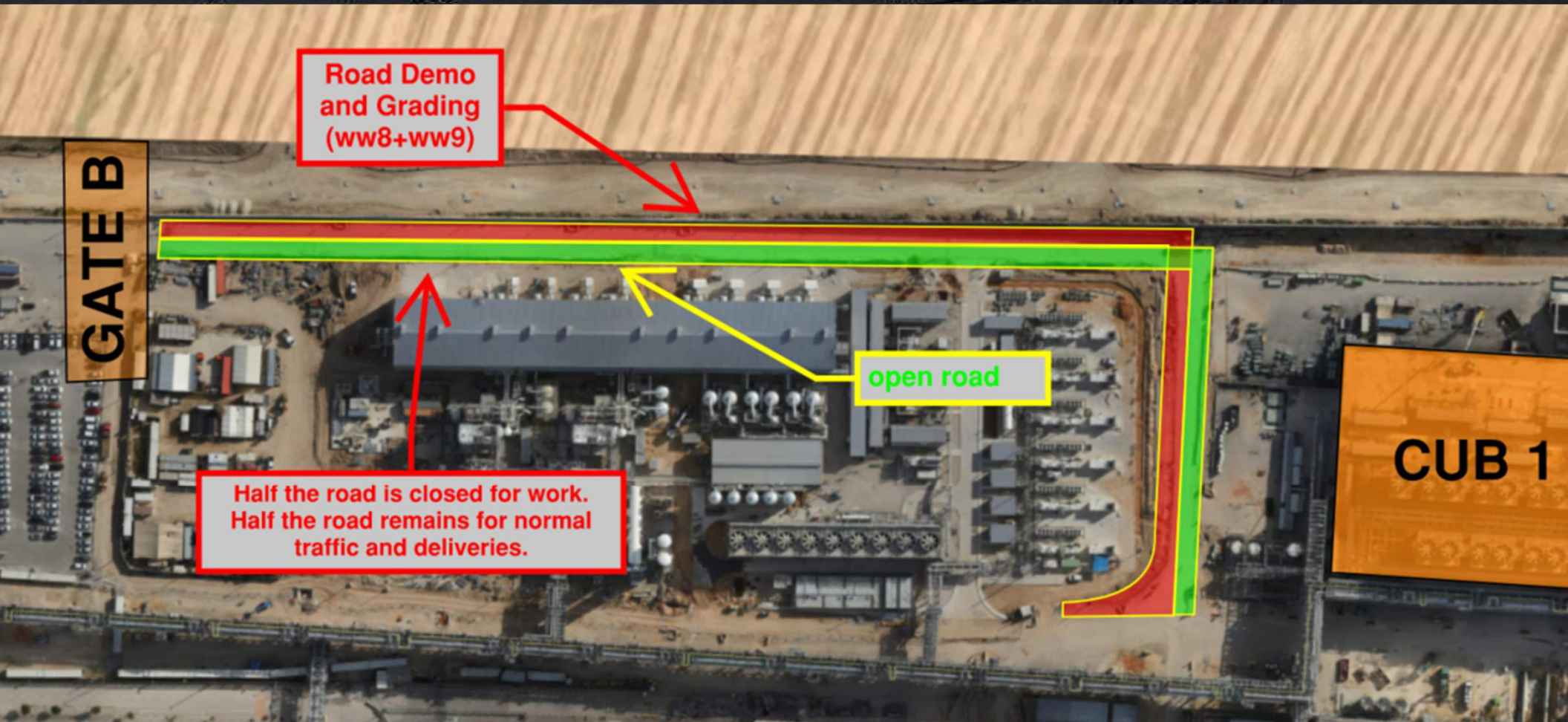
HOFFMAN CONSTRUCTION COMPANY



Daily Coordination Meeting

Site Logistics

North





HOFFMAN CONSTRUCTION COMPANY



Daily Coordination Meeting

Site Logistics

North





Daily Coordination Meeting

Site Logistics

South



Area Assessment

When arriving at the work area, before starting any work, a scan and inspection of the area must be carried out to ensure it is free of hazards or dangers. If risks cannot be minimized or eliminated, at least be aware of them.

Here is a list of some topics that need to be checked before starting work:

- Visual inspection of the work area.
- Check for any active or live systems around us.
- Check for any openings or holes in the area, including ensuring the proper covering of openings or holes. If a hazard is found, report it and do not begin working near the hazard.
- Verify approval for all relevant plans and forms for the task (RAMS, fall arrest plan, confined space, hot work, working at height, HRA, and more).

Daily Coordination Meeting



14:00 Sign In