

# Daily Coordination Meeting



# Daily Coordination Meeting

## General Topics:

- Orientation refresher training



An aerial photograph of a large industrial construction site. The site features several large, rectangular buildings with flat roofs, some of which are covered in construction materials and equipment. A large, light-colored rectangular area in the center appears to be a cleared or recently completed section. The surrounding area is a mix of dirt, gravel, and some smaller structures. Two red callout boxes with white text and arrows point to specific areas of interest. The first box, located in the upper right, points to a section of a building roof. The second box, located in the middle left, points to a large, light-colored rectangular area on the ground.

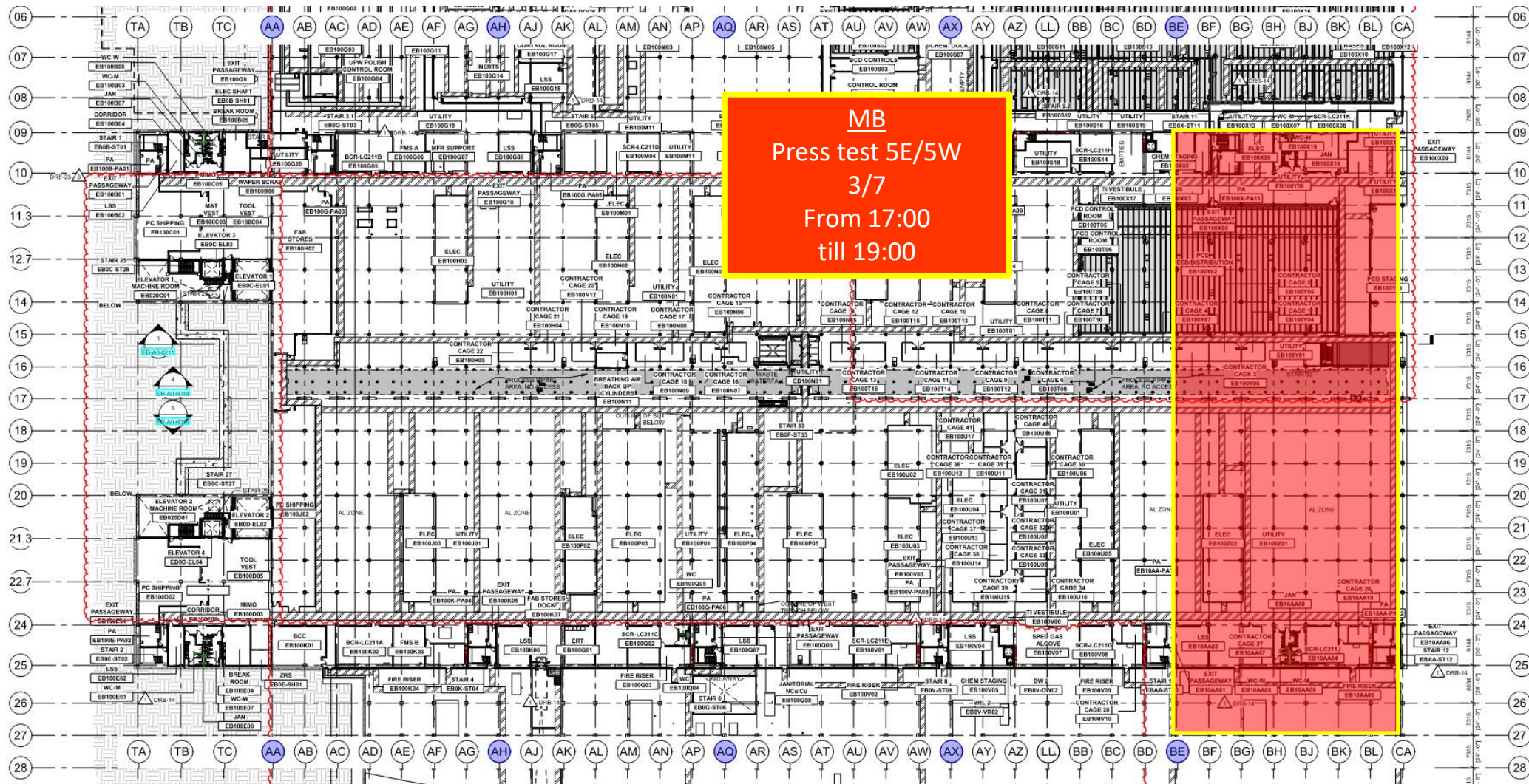
CUB2 flat work  
5:30am

4DA air handler pad  
6:30am with 450  
crane





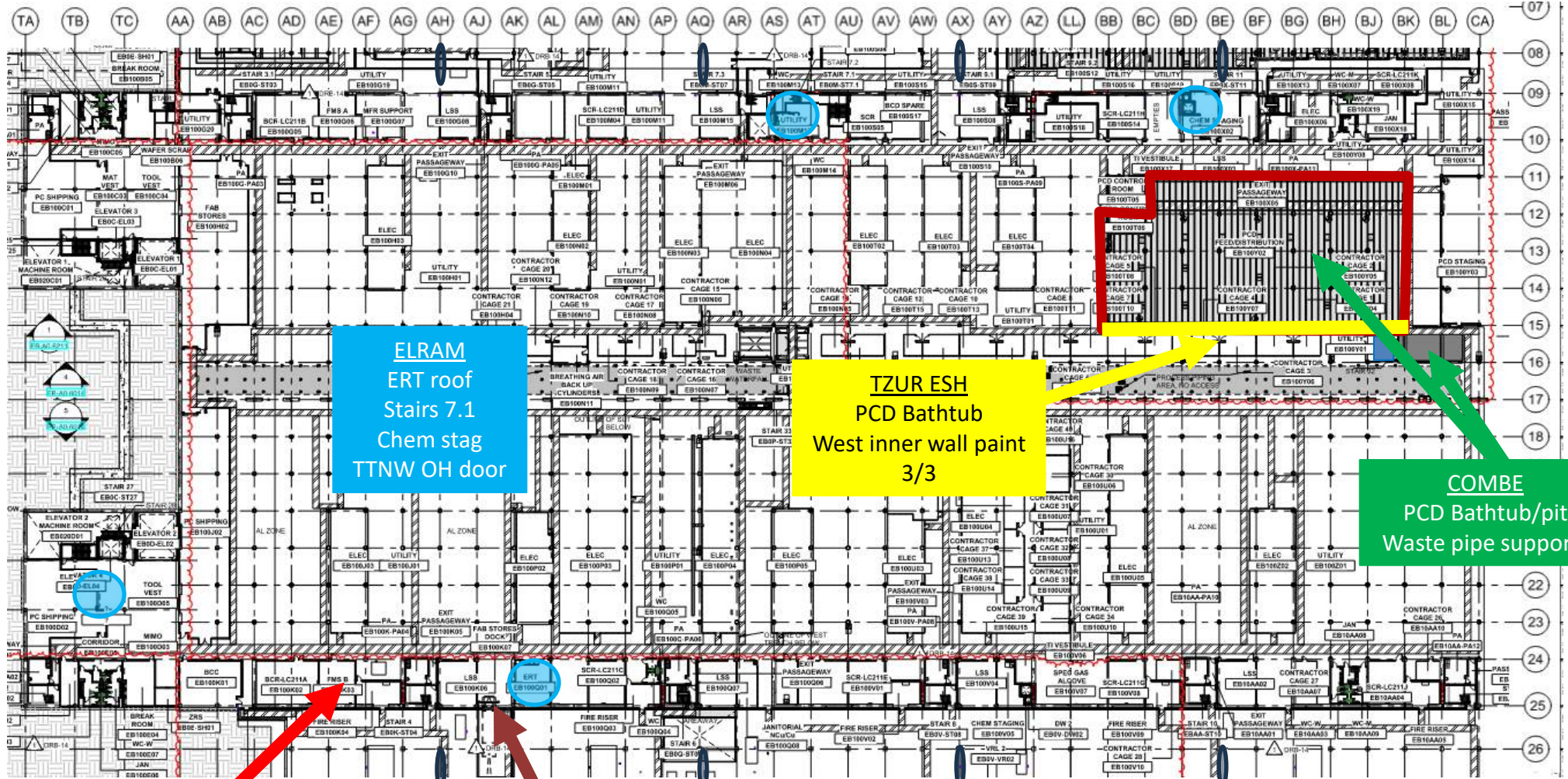
# UTILITY LEVEL PRESS TEST







# UTILITY LEVEL MOD1



**ELRAM**  
ERT roof  
Stairs 7.1  
Chem stag  
TTNW OH door

**TZUR ESH**  
PCD Bathtub  
West inner wall paint  
3/3

**COMBE**  
PCD Bathtub/pit  
Waste pipe supports

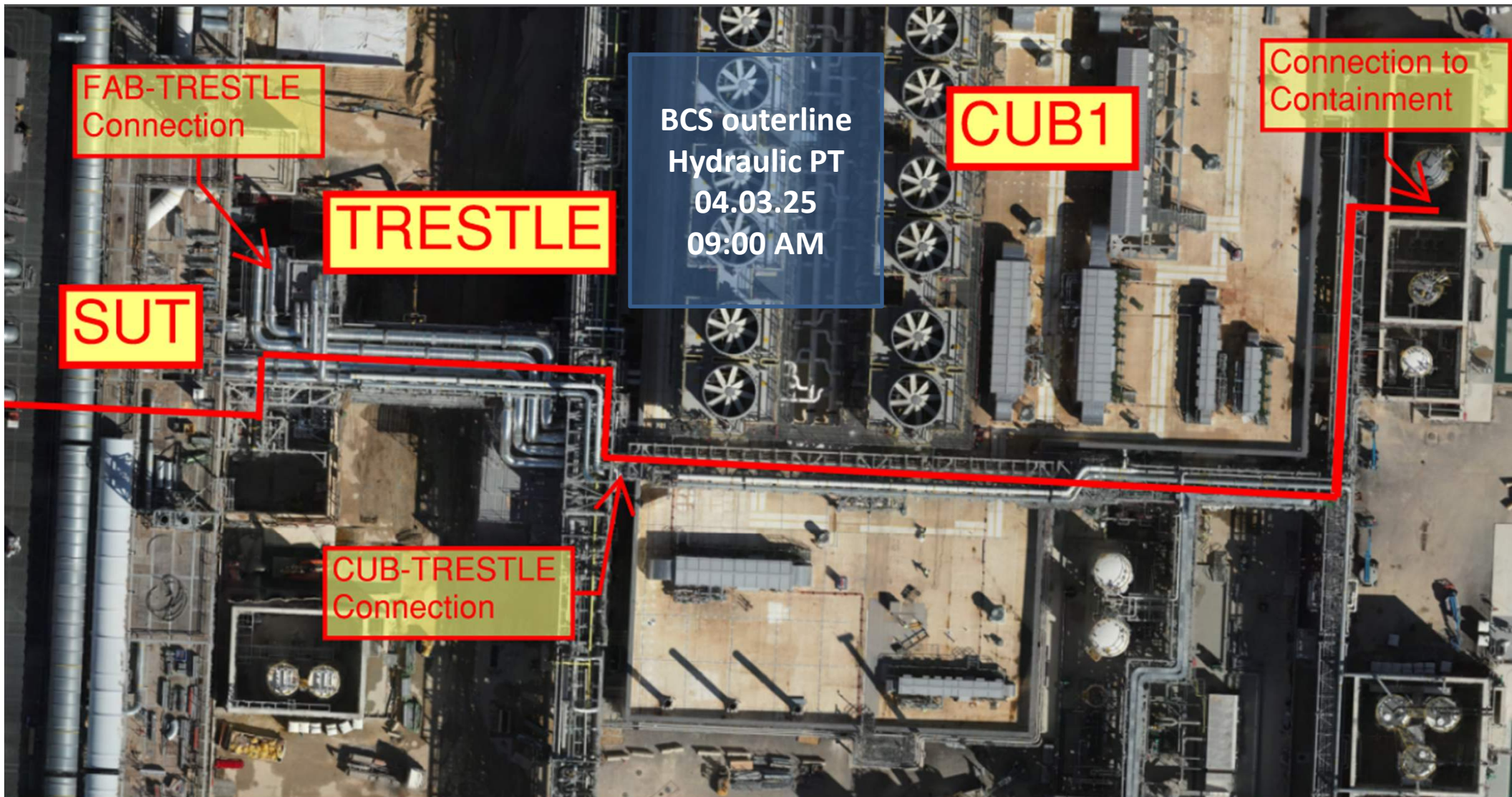
**CARMEL DUCT**  
Remove duct for RHS install  
GO TIME!!!!

**HSI**  
Slab pour POURED  
**HYG**  
Install RHS 3/4





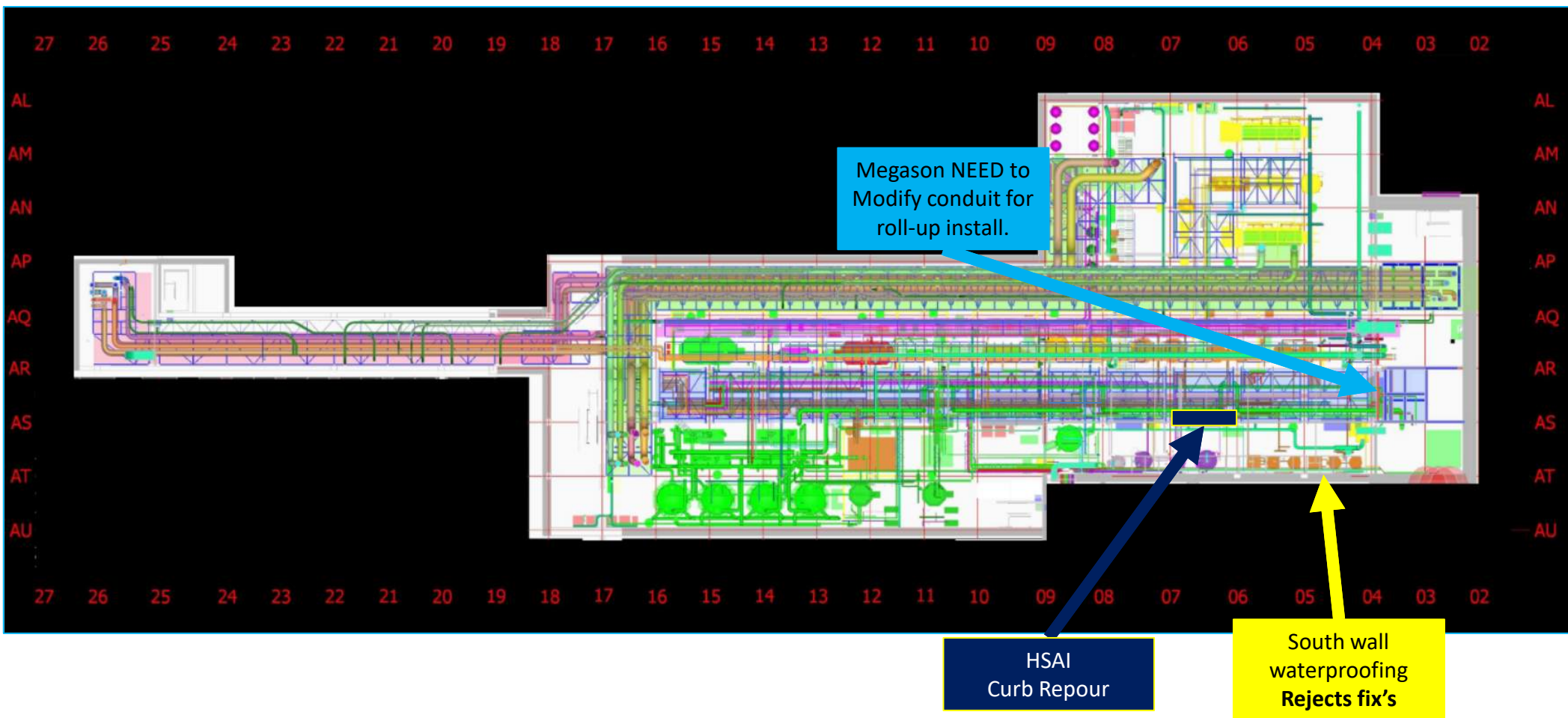
**HOFFMAN CONSTRUCTION COMPANY**





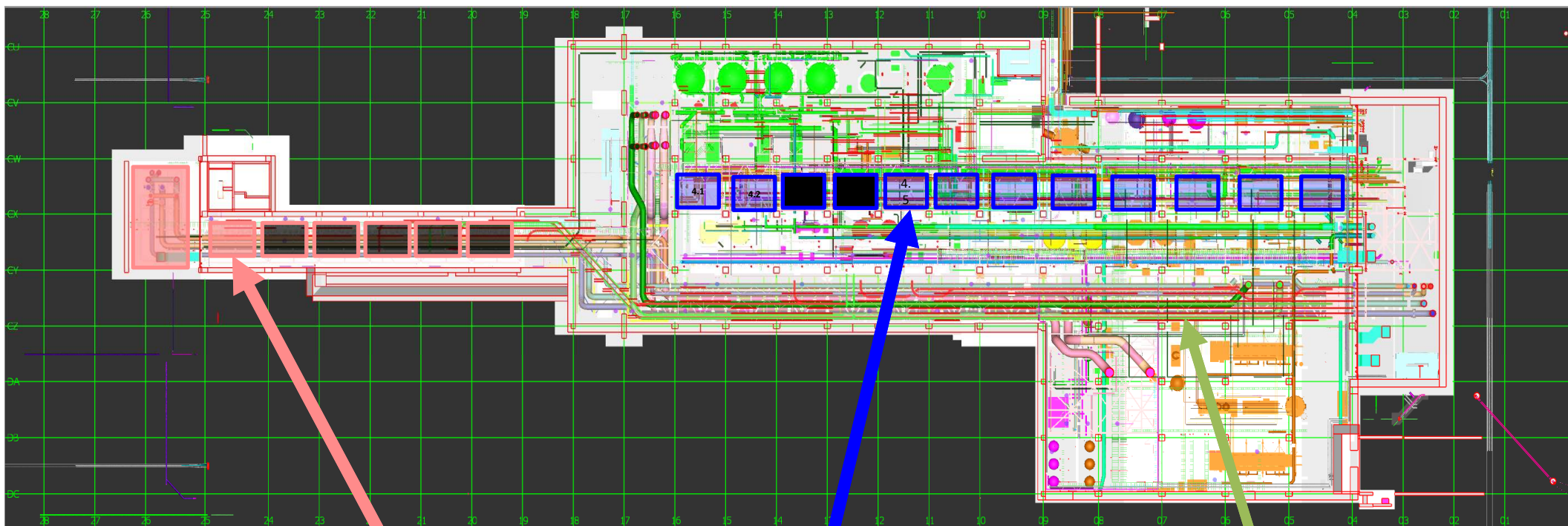


## SUT 38.1 LEVEL





## SUT 38.2 LEVEL



### Rack 6

16.2.2025	Module 1
17.02.2025	Module 2
24.02.2025	Module 3
25.02.2025	Module 4
03.03.2025	Module 5
04.03.2025	Module 6

### Rack 4 Upper

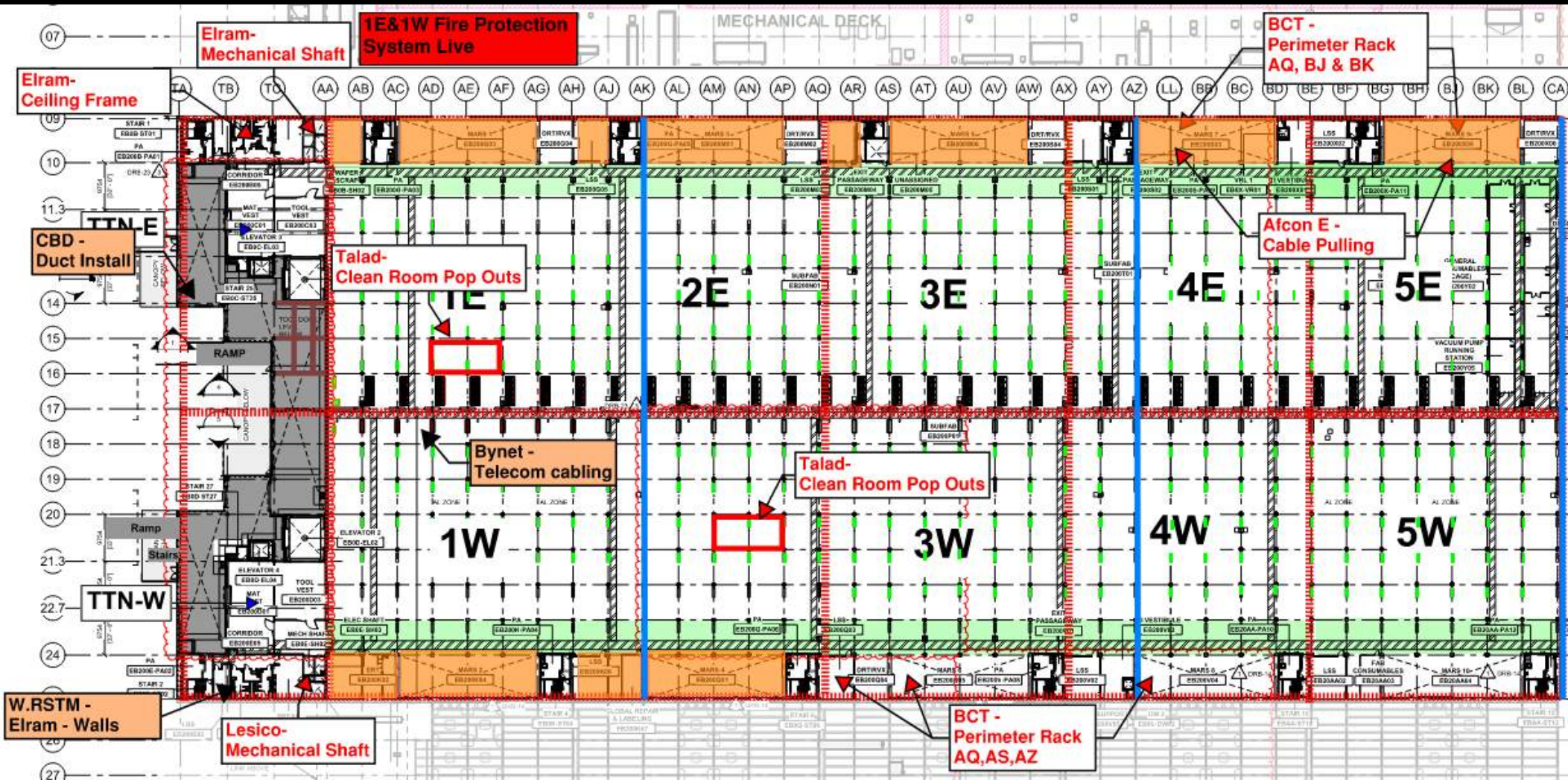
Lifting schedule:  
**M#4.5 – 4/3/25**  
 M#4.6 – 6/3/25  
 M#4.7 – 10/3/25

### Rack 2

Piping  
 connection

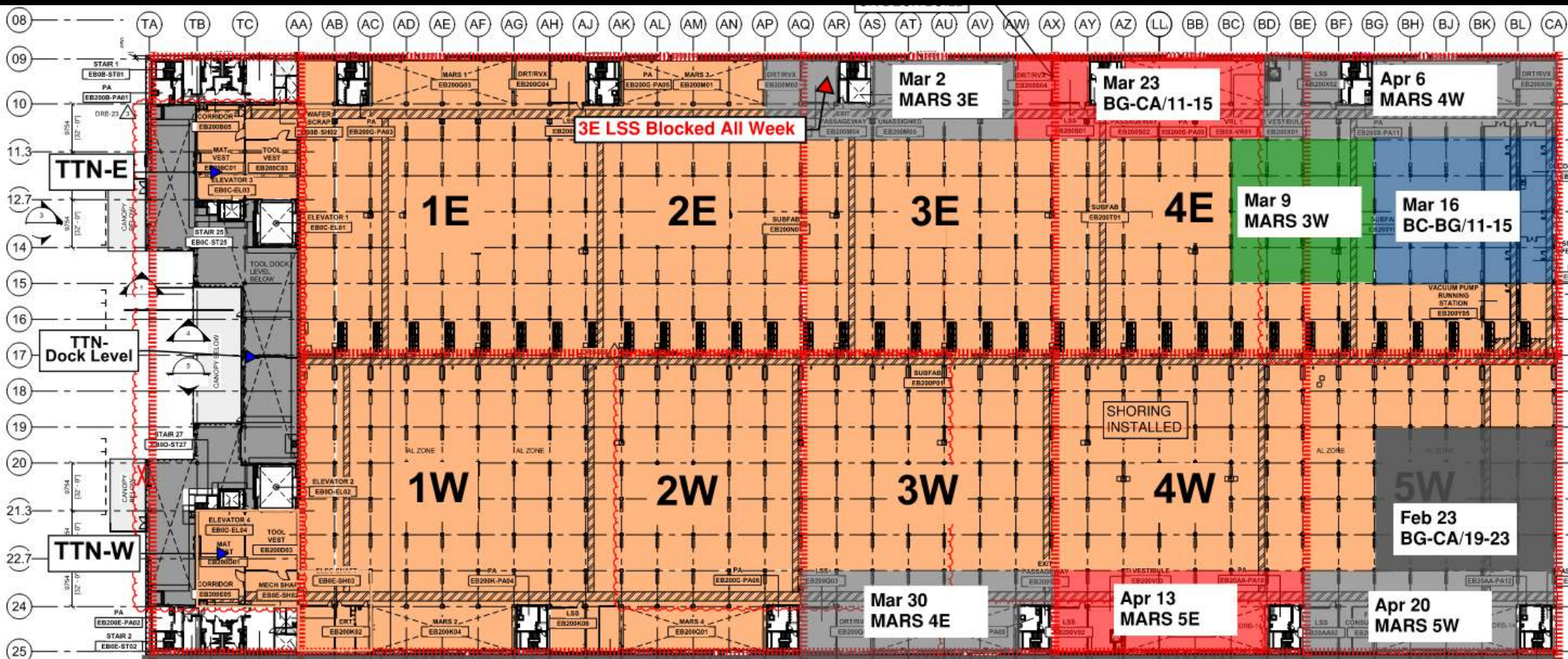


# SUBFAB BUILDOUT MOD 1



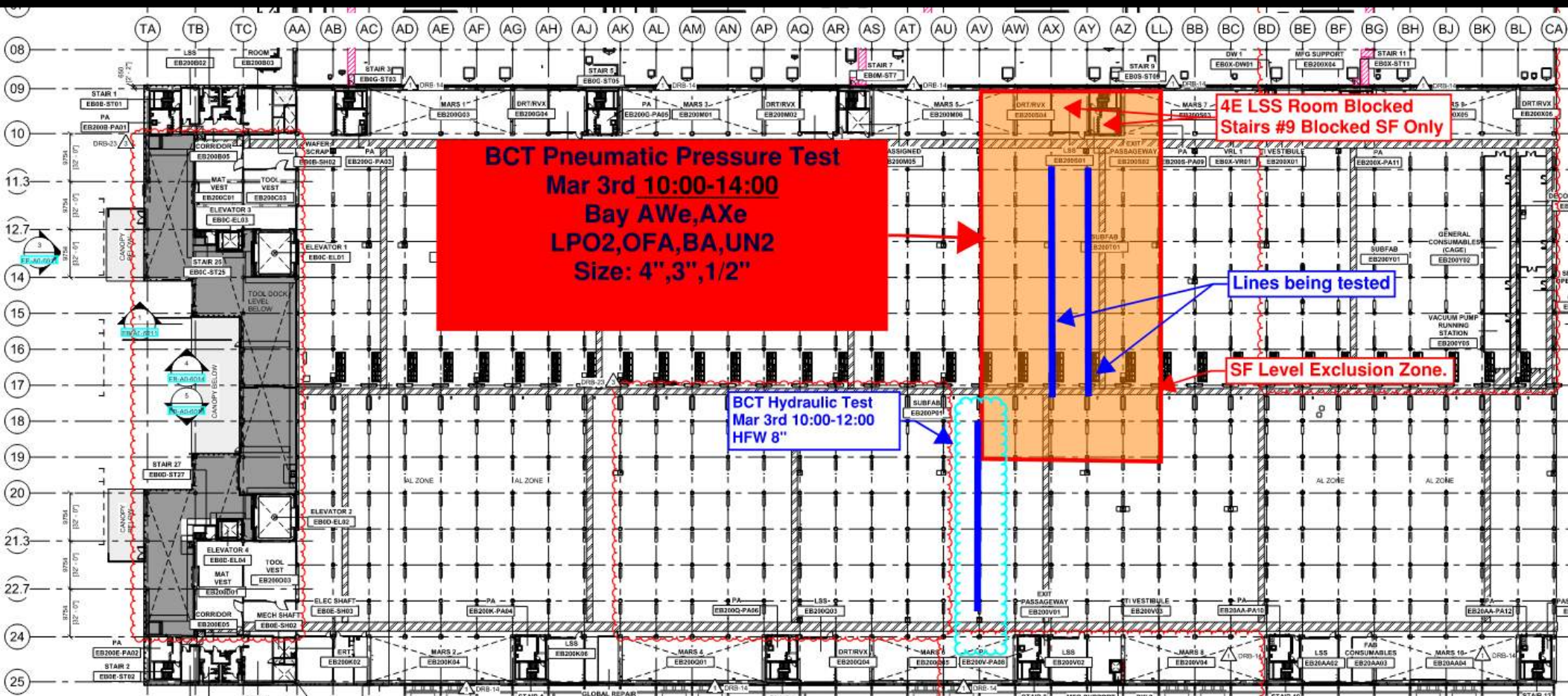


# SUBFAB CRC TOPCOAT



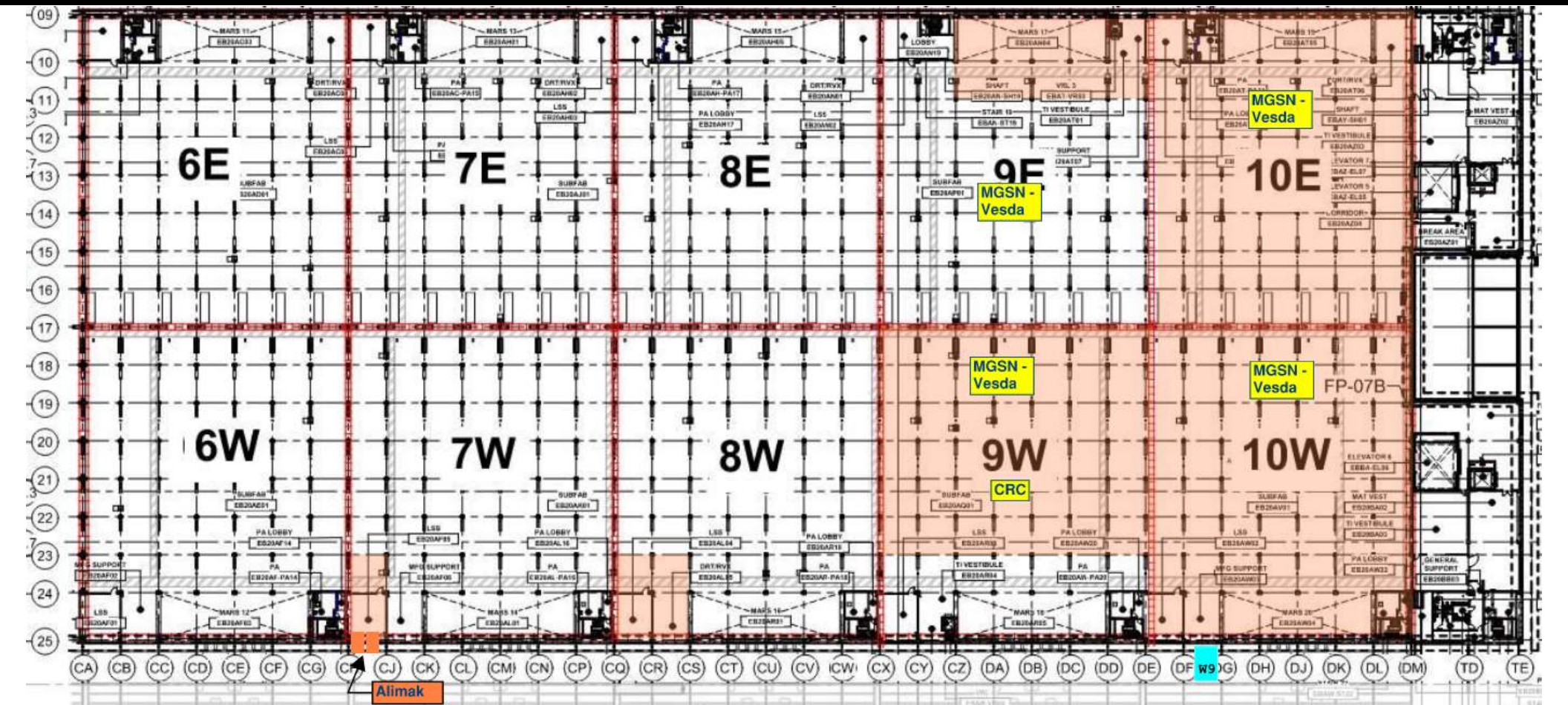


# BCT Pressure Test Today

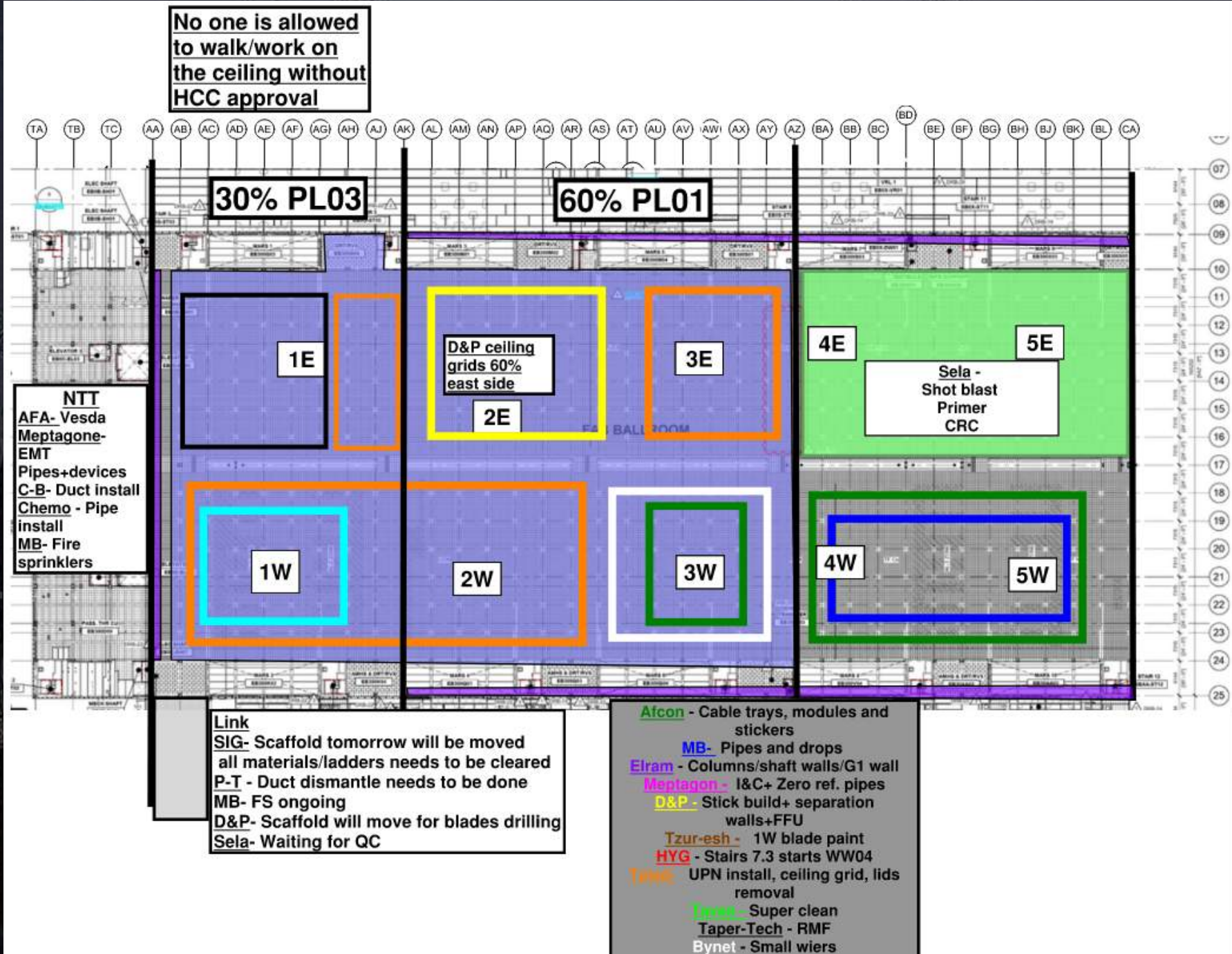




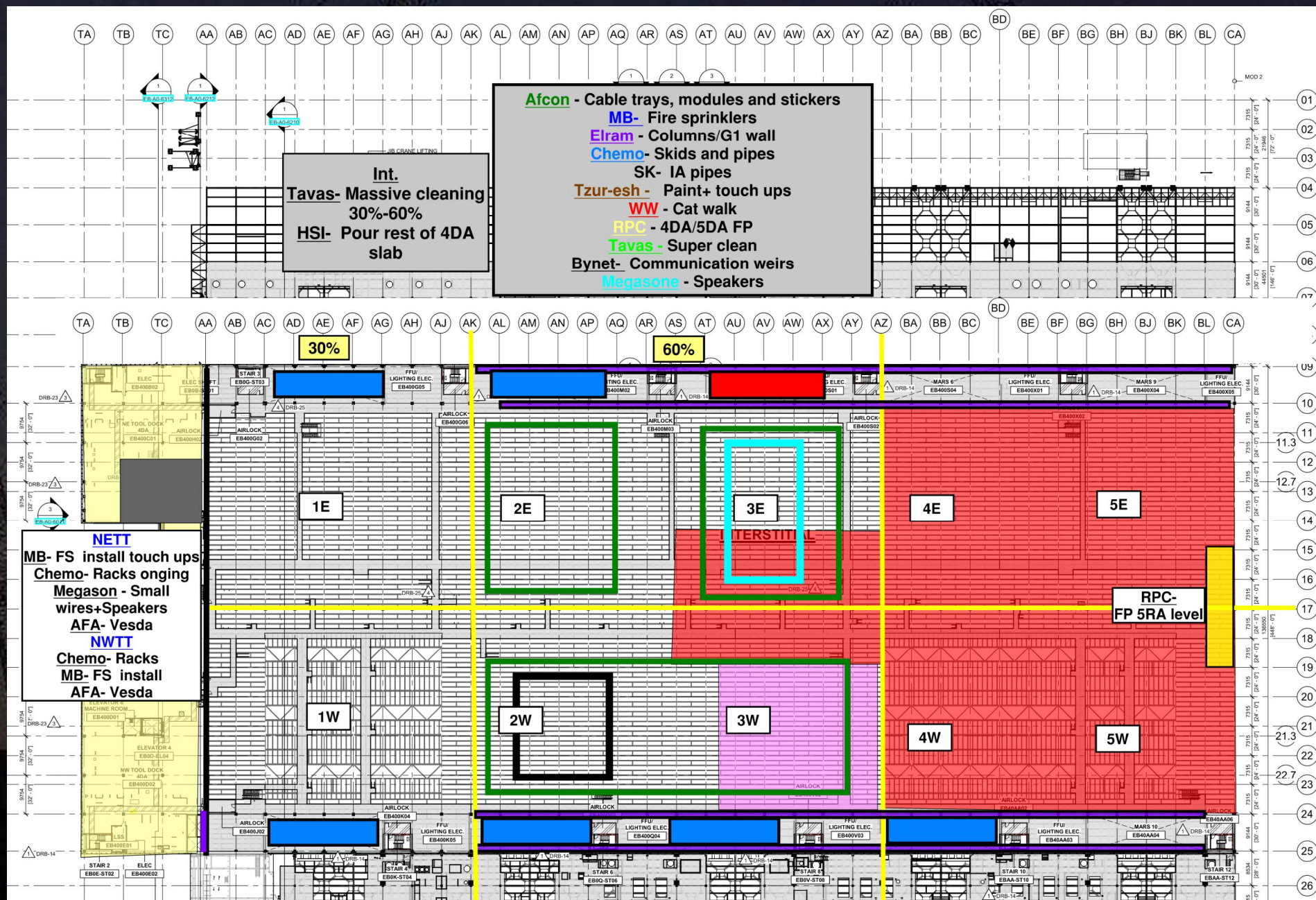
## SUBFAB BUILDOUT MOD 2



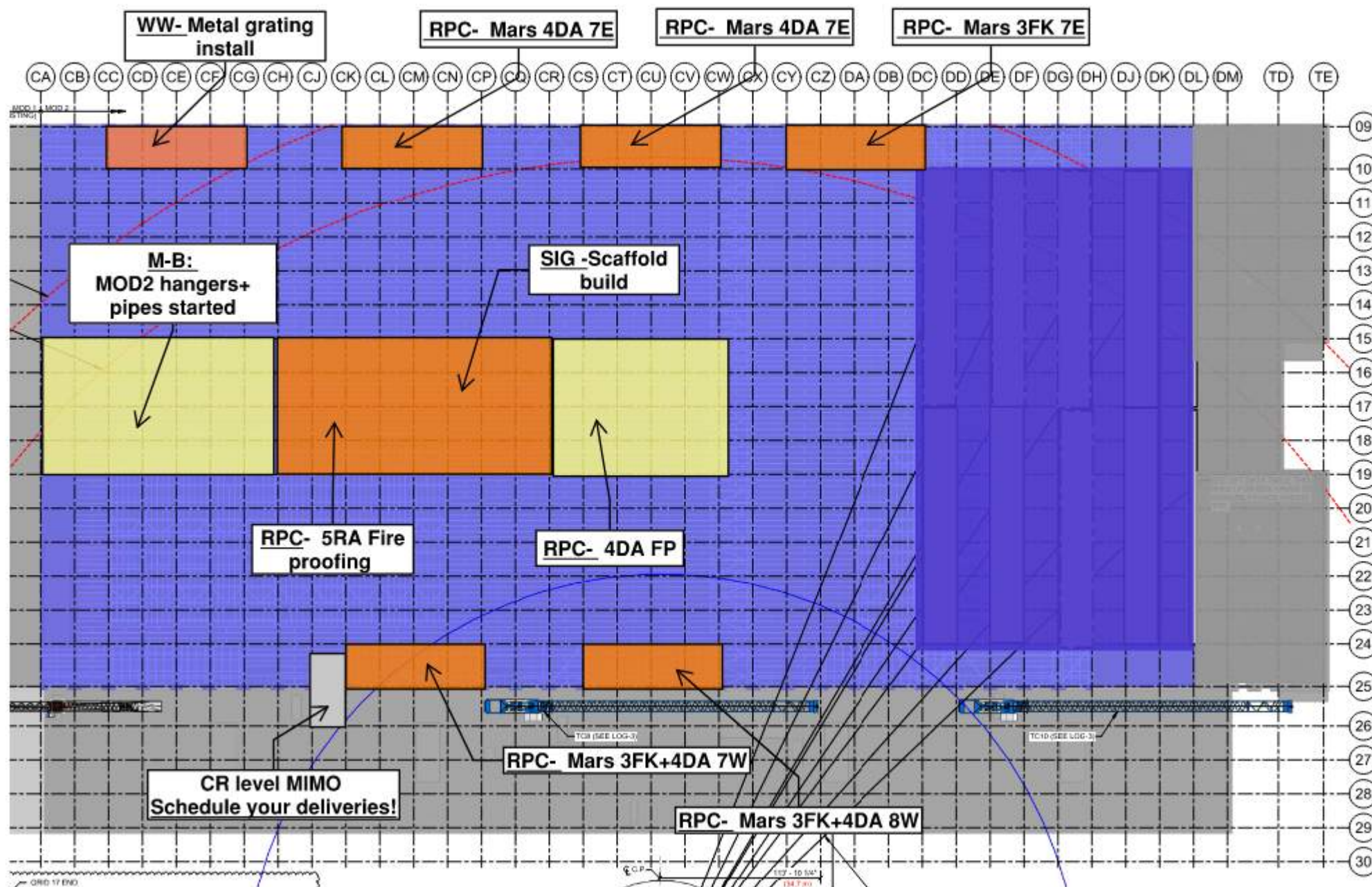










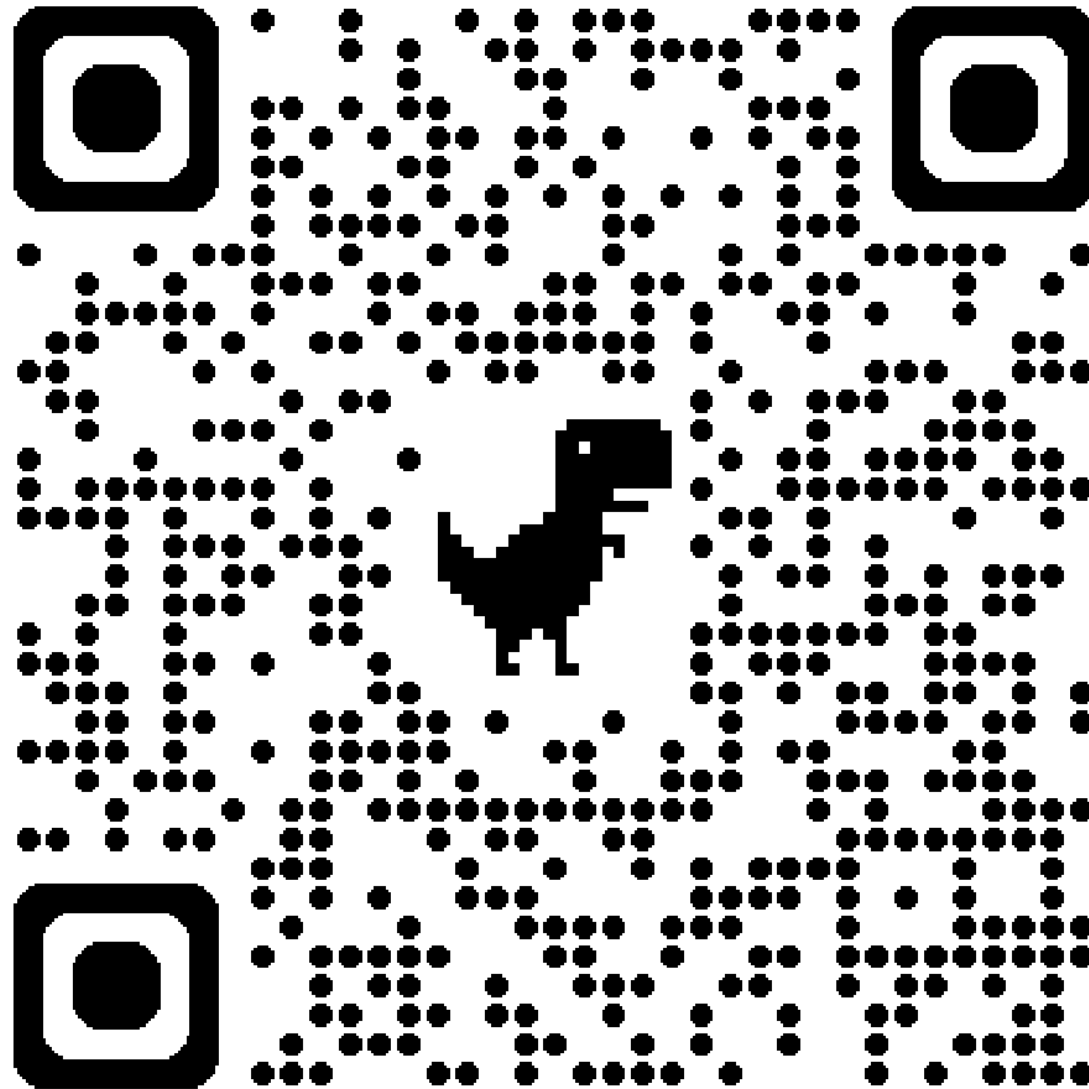






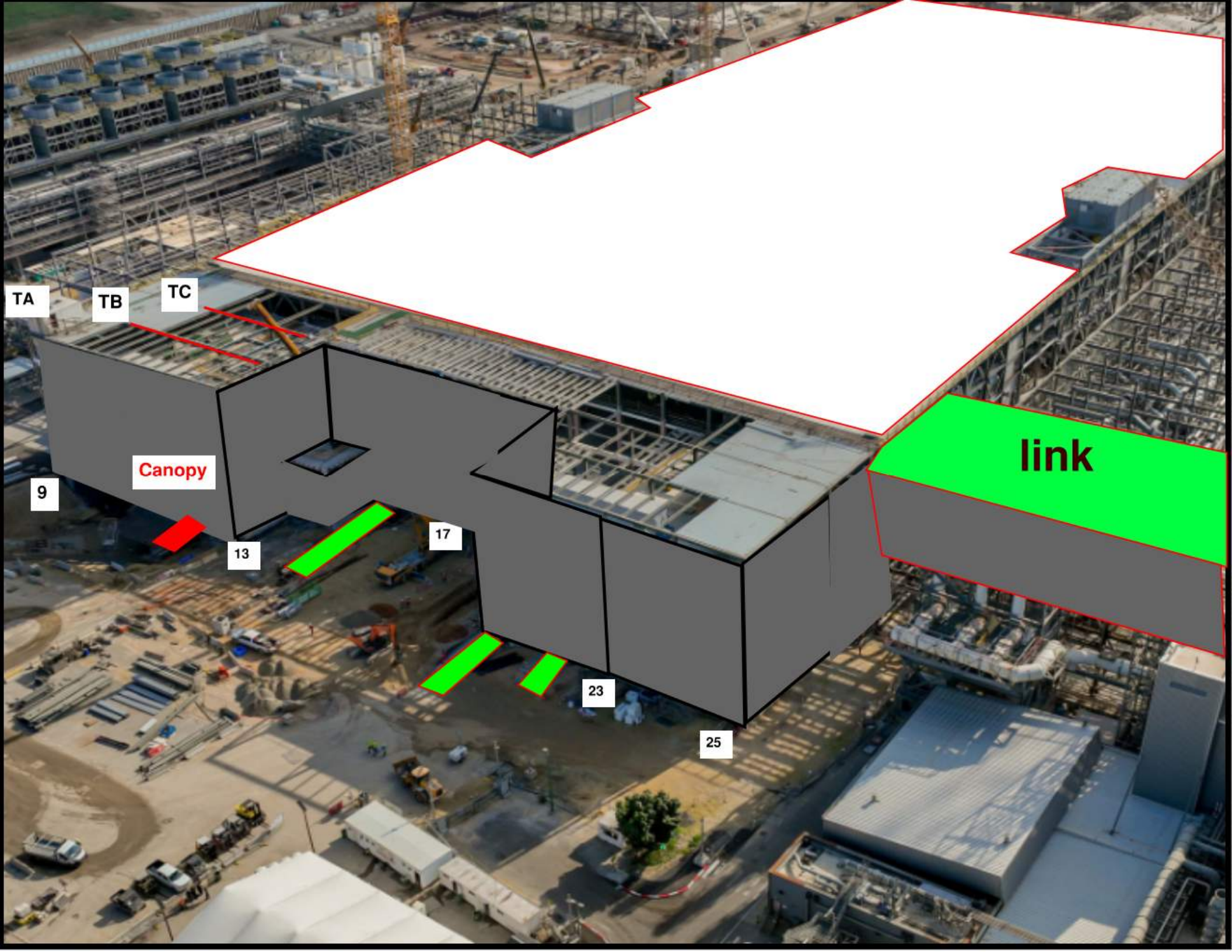


# Siding Penetration Request Form



Subcontractor must fill out and submit all required cells in order to get a penetration cut through the siding.





TA

TB

TC

Canopy

9

13

17

23

25

link







## MOD 2 EASTSIDE GIRTS/SIDING

2752/ 2751	2742/ 2741	2732/ 2731	2722/ 2721	2712/ 2711	2552/ 2551	2542/ 2541	2532/ 2531	2522/ 2521	2512/ 2511	2502/ 2501

READY FOR GIRTS	
INSTALLING GIRTS	
READY FOR PANELS	
PANELS INSTALLED	



## MOD 2 WESTSIDE GIRTS/SIDING

READY FOR GIRTS 

INSTALLING GIRTS 

READY FOR PANELS 

PANELS INSTALLED 

2602/  
2601

M  
I  
M  
O

2612/  
2611

**MIMO**  
2622/  
2621

2632/  
2631

2642/  
2641

2652/  
2651

2812/  
2811

2822/  
2821

2832/  
2831

2842/  
2841

2852/  
2851

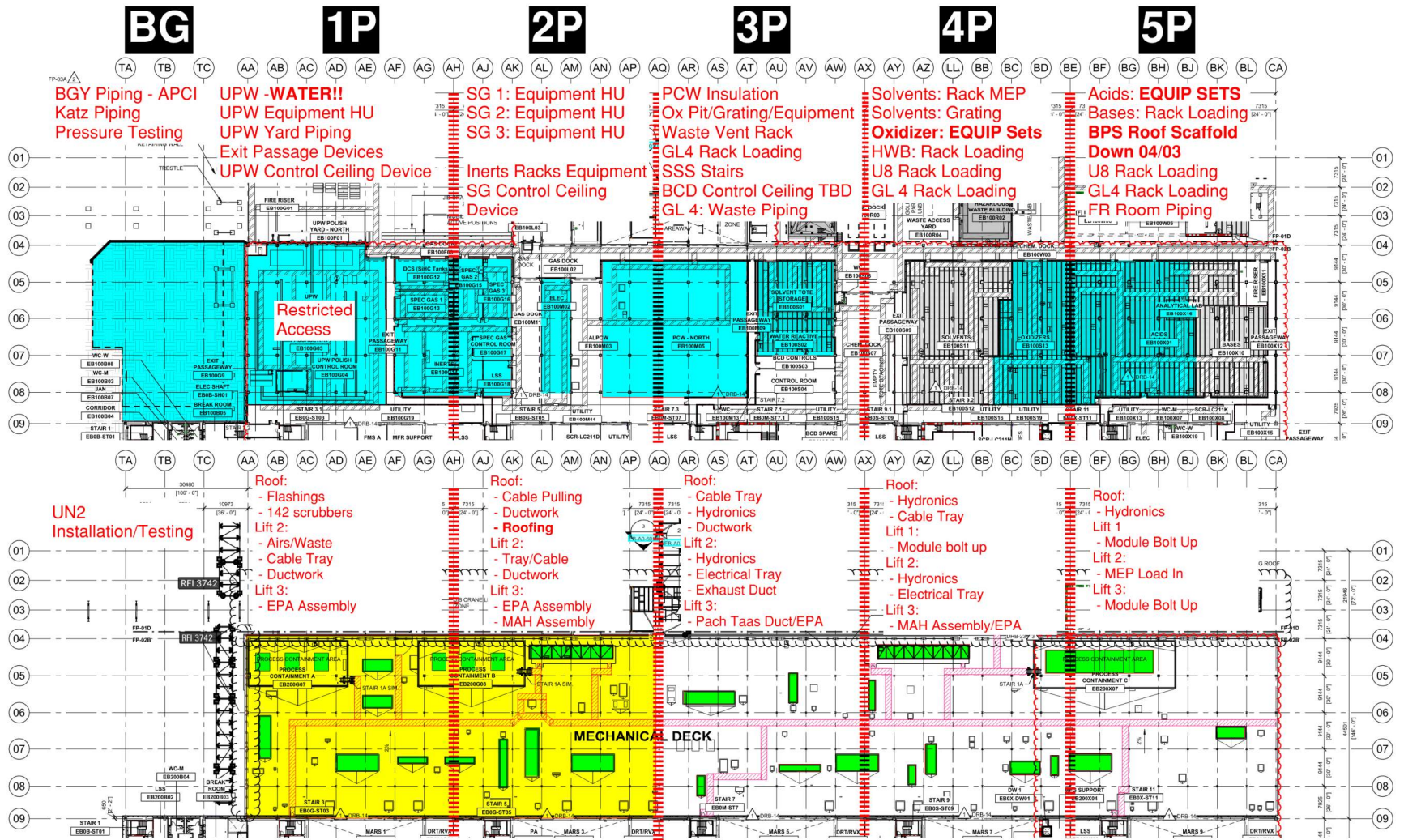


# PSSS.1

# Utility Level

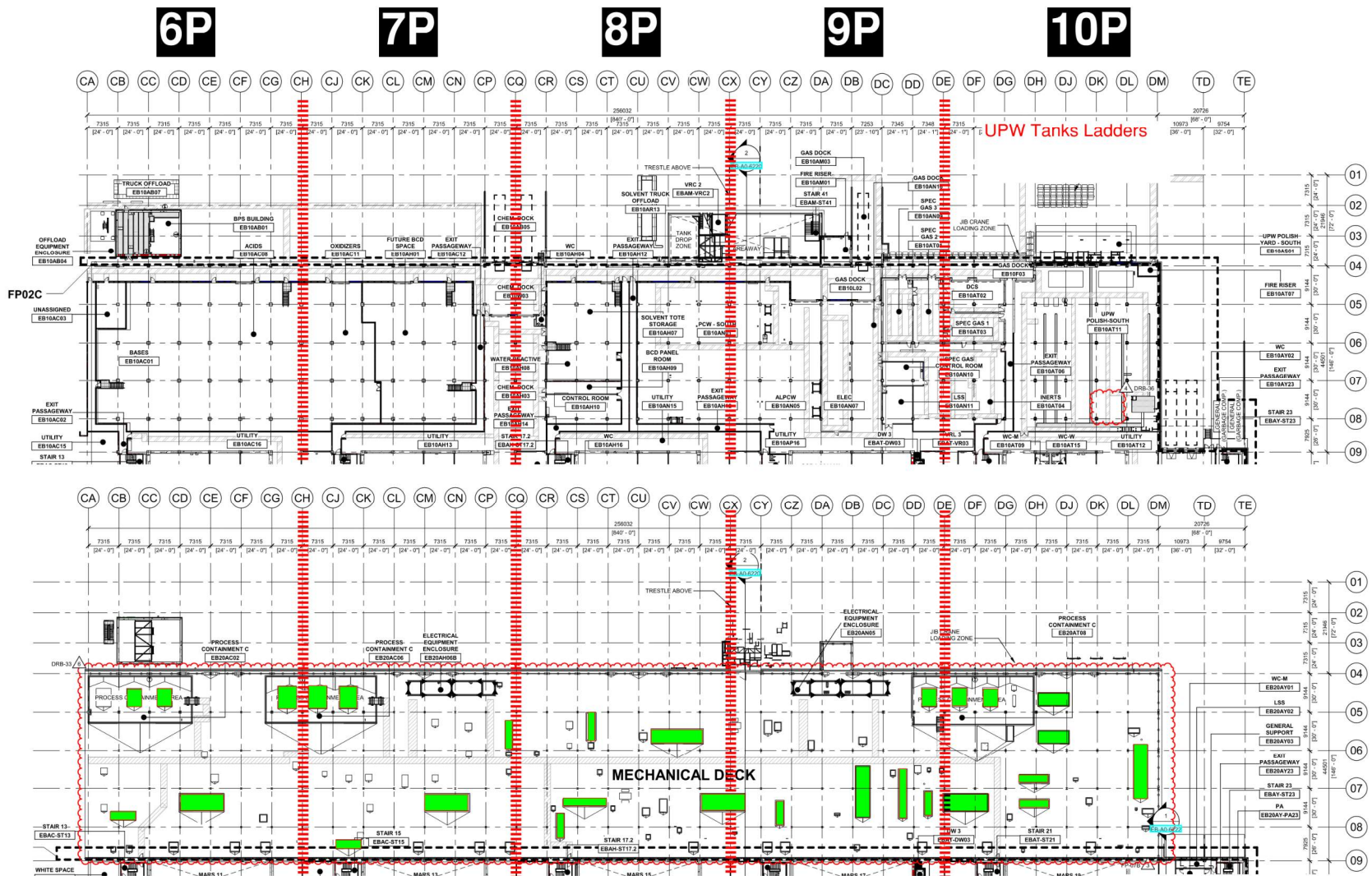
## 1YA

# PSSS Roof 2SA



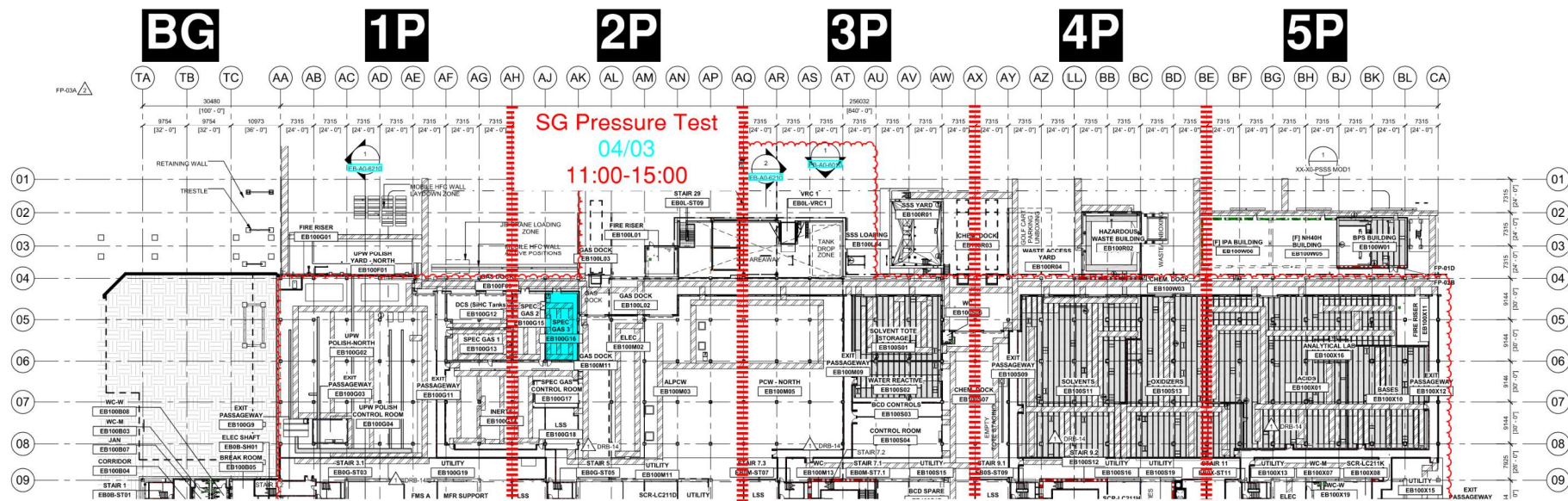


# PSSS.2





# PSSS Pressure Testing

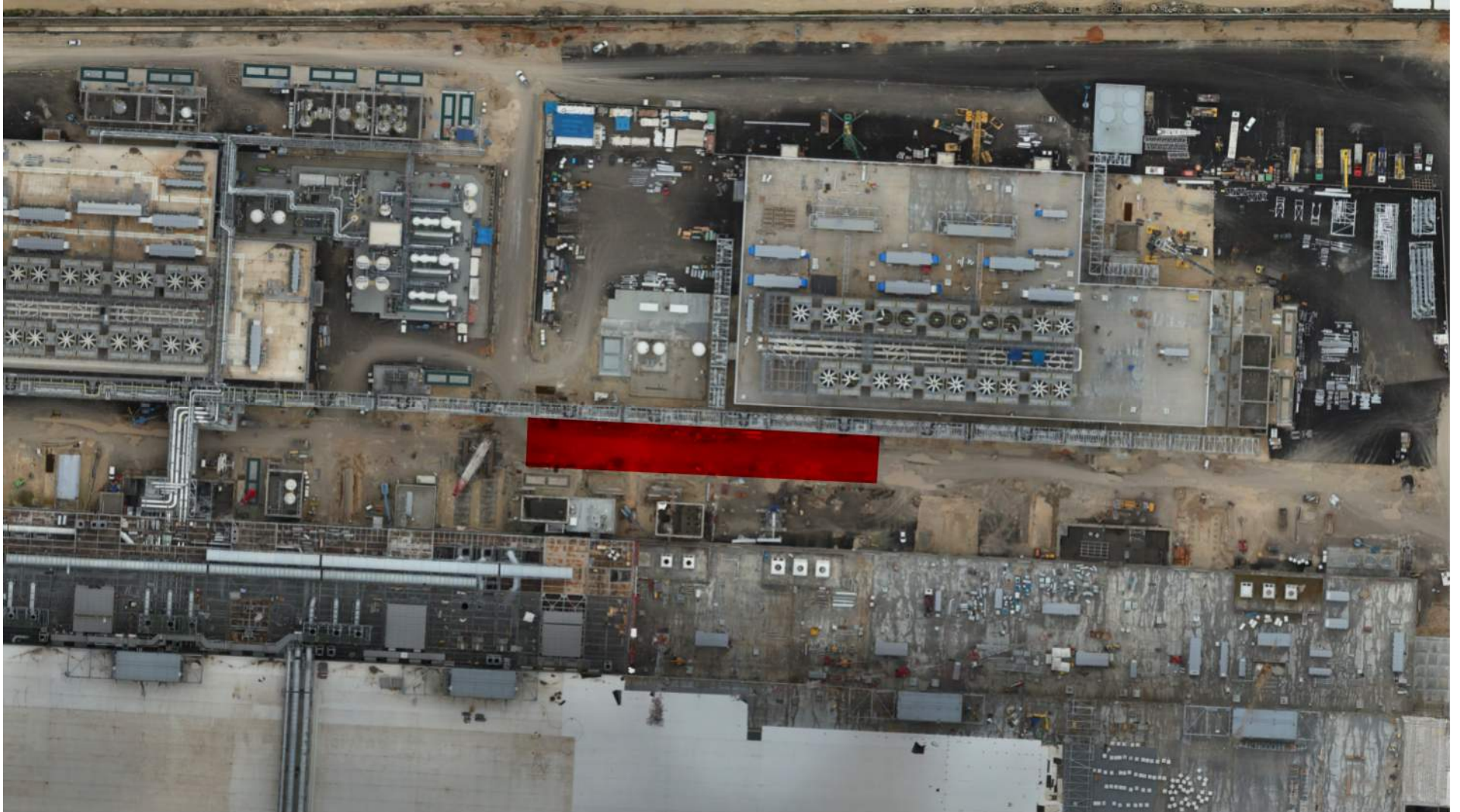


# Utility Level

## 1YA



# 3800 Dismantle WW10



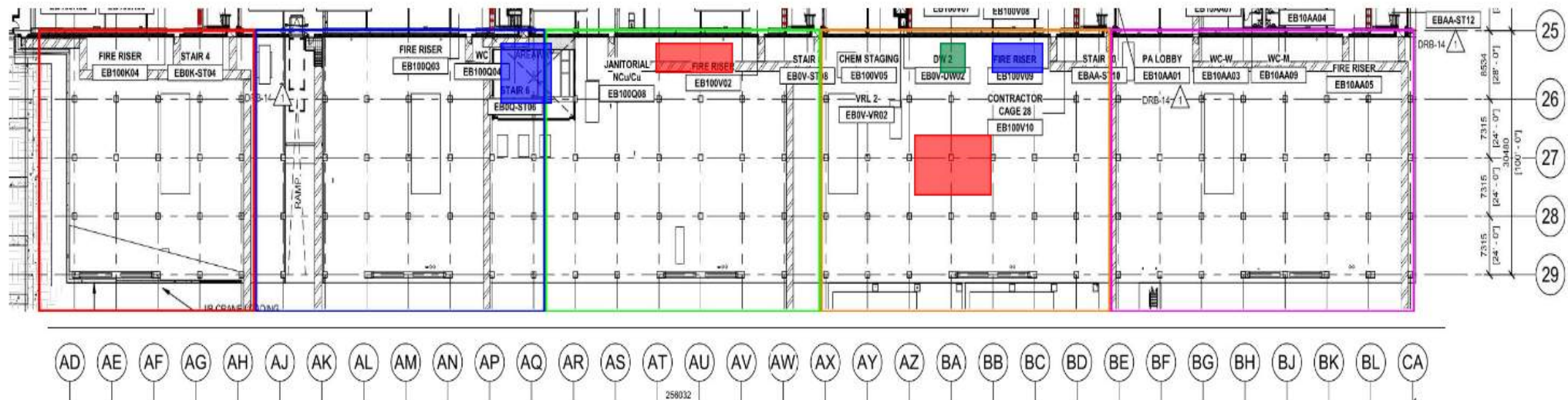


## WJG – UL

\*Pach Taas - installation of modules in west SUT.

\* Pach Taas - WP are all installed. sealing and bolting

\* SK - installation of 3" cooper pipe  
\* W&W - welding of shims for outriggers  
\* Stage design - dismantling Pach Taas scaffold





## WJG – Lift 3

		* Chemo - installation of second MARS pipe	* Pach Taas - installation of single stack BD line * SN - cutting grating penetrations for Pach Taas	
--	--	--	---	--





## WJG – Lift 3

		* Pach Taas - working on bypass ductworks.		* Chemo - pipe fitting for MARS pipes
--	--	--	--	---------------------------------------







## Crane logistics

Crane: 500 ton crane  
located at AQ. tomorrow  
it will skip south to  
AV-AW to support Pach  
Taas 4J ductworks

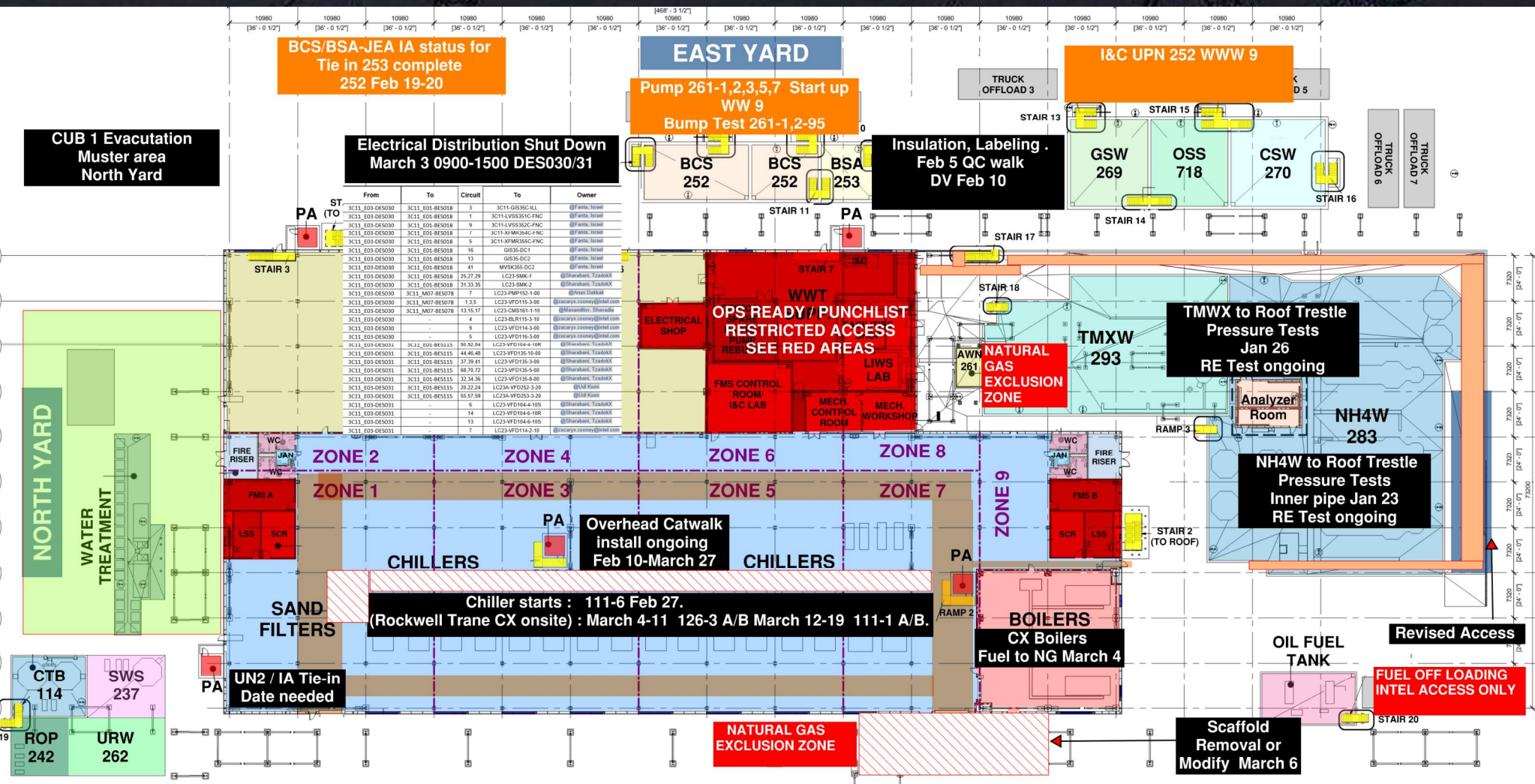
Crane: 650 ton crane  
location: BE-BK on west  
road. leaving on end of  
day 04/03/25 after  
installation of MAH  
hoods and single stack.



small crane truck will  
clear out by end of  
day

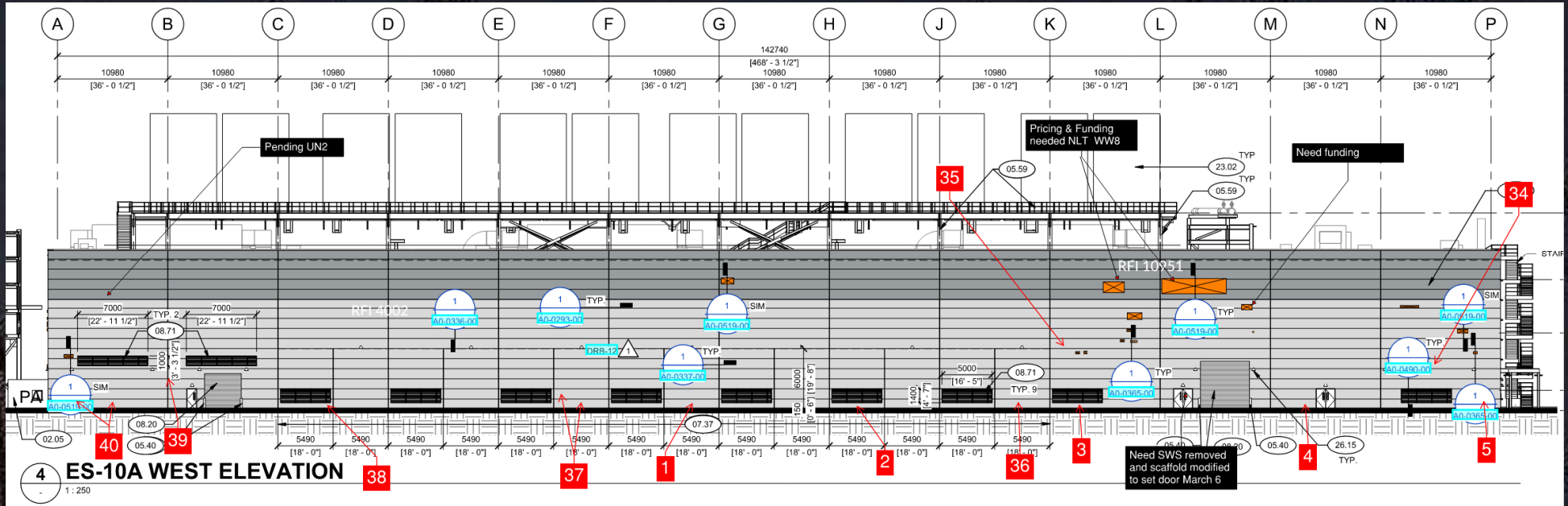


# CUB 1



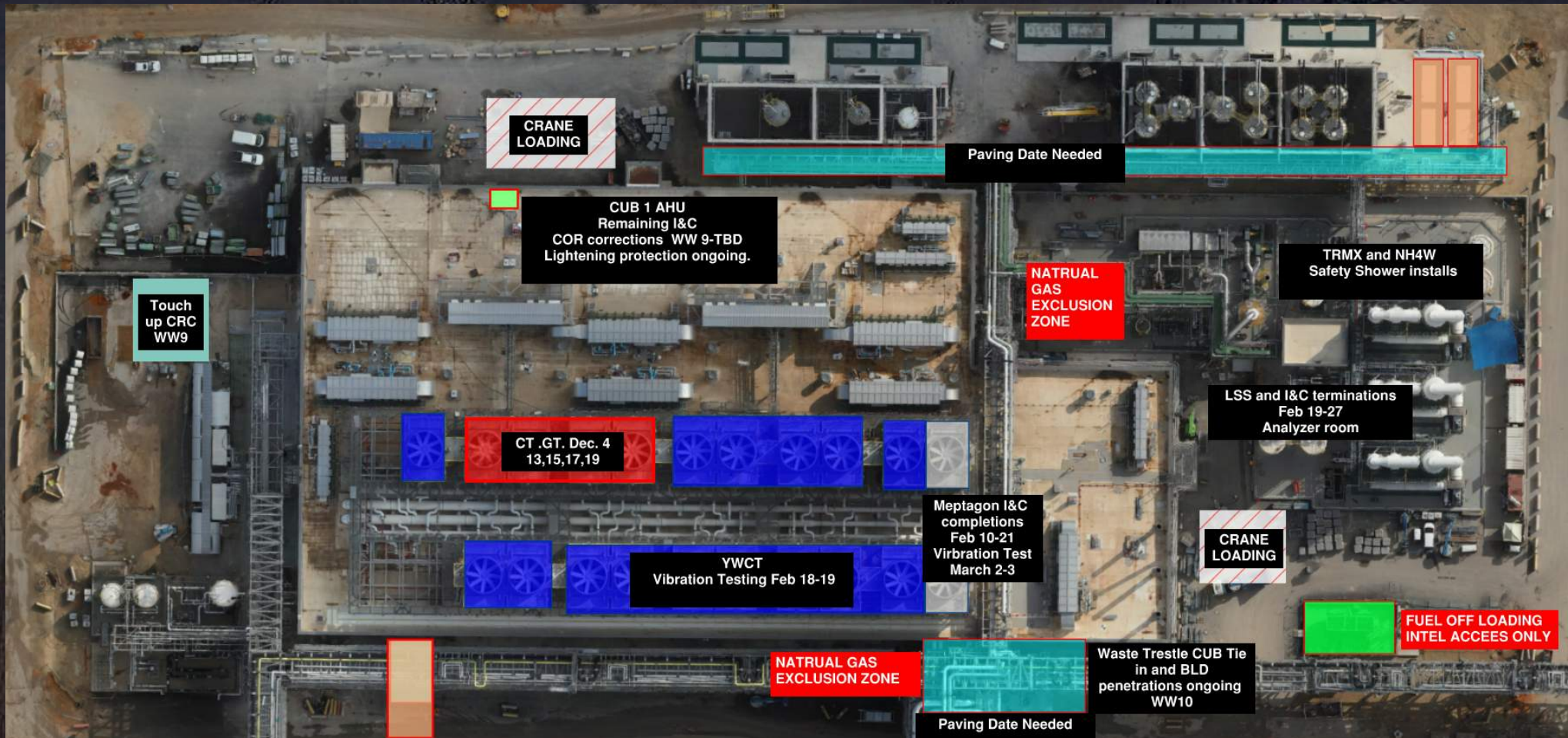


# CUB 1 West Wall coordination /Trestle/Site



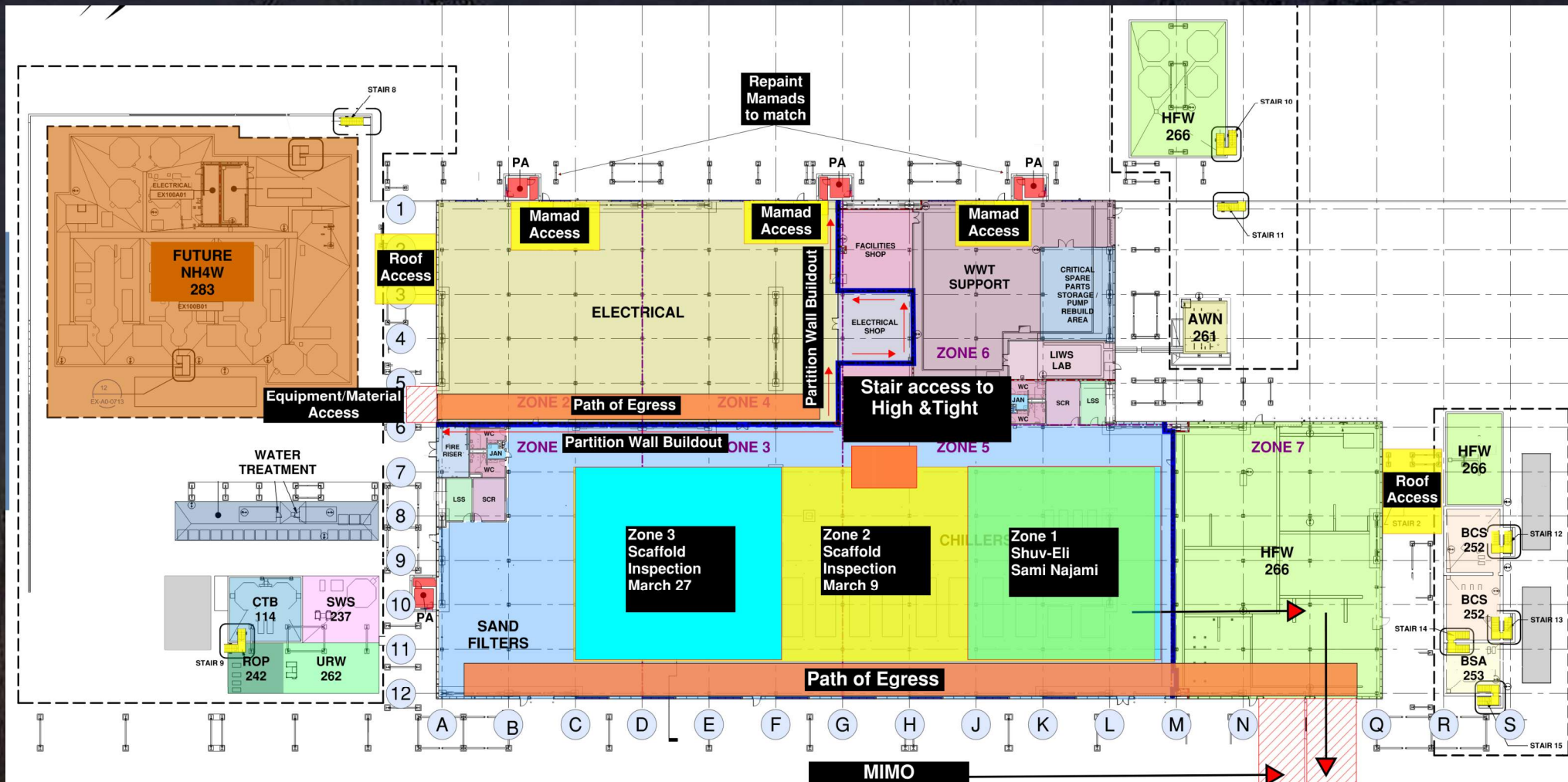
- Waste Systems Pressure Testing Wrap up 3d March 4-5
- Trestle Scaffold removal 5d March 6-11
- Metal flashings and Panel work Man Door 5-7d March 12-20
- Claim Envelope ready for DVs March 20
- DV acceptance list and corrections 7d April 2
- Ops Ready April 3
- Concrete removal Site Grading Form rebar pour concrete 5-7 d March 23-March 31
- Bullards 2d April 1-2

# CUB 1 – EXTERIOR/ROOF



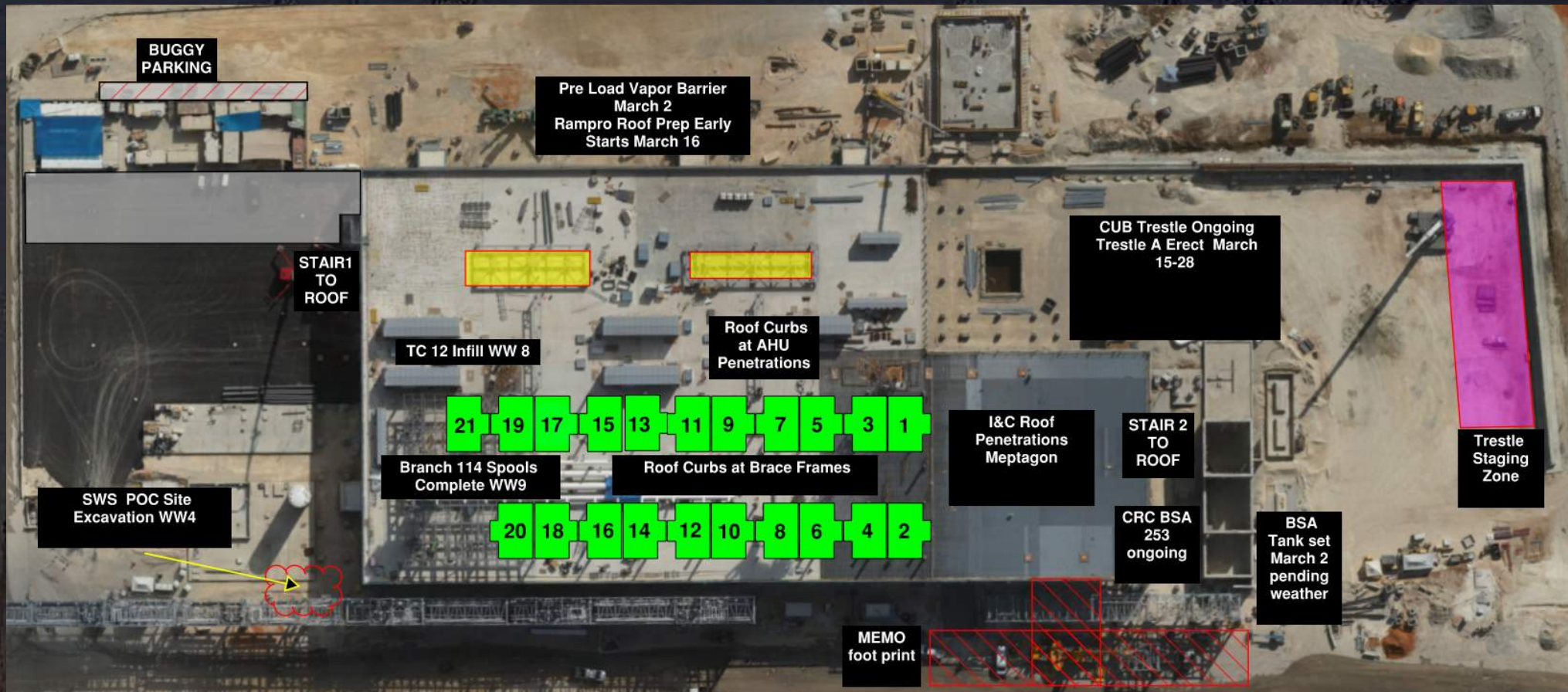


# CUB 2- Load in ,H&T, Framing and Sheetrock

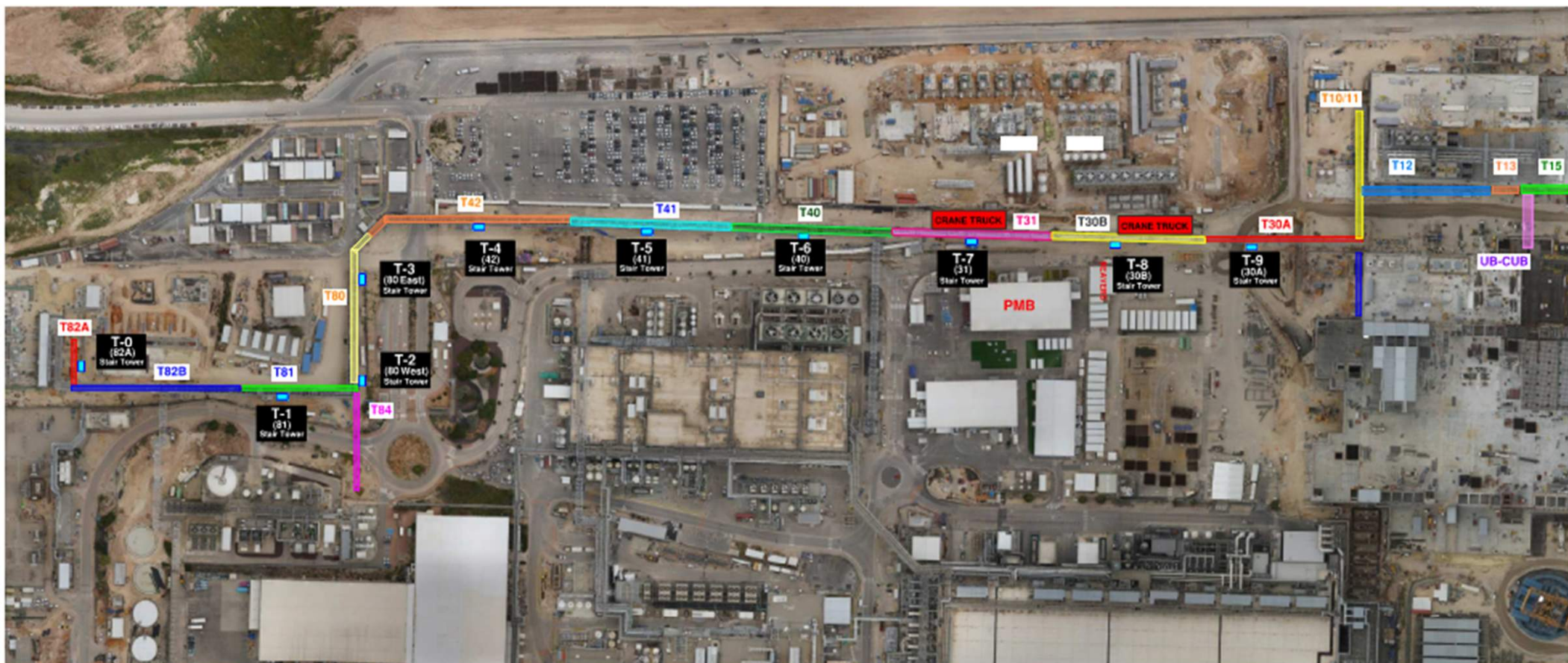




# CUB 2 – EXTERIOR/ROOF









From main kiosk

Site temporary power

Legend :

- 22KV Line
- 400V Line
- 109 - Kiosk
- Lift Station

Temp power shutdown

Start: 05-Mar - 4:00 PM

End: 05-Mar - 5:00 PM

Clean-room+Roof W1+W2+W3  
SB, lights.

Temp power shutdown

Start: 03-Mar-4:00 PM

End: 03-Mar- 5:00 PM

Clean-room+Roof E1+E2+E3  
SB, lights.

North

Fab 38.2

Fab 38.1

TC-9

630A SE

TC-7

630A NE

TC-5

630A SE

630A NW

630A SW

TC-10

630A SW

TC-8

TC-6

Cub 2

TC-12  
Done

Cub 1

To 115

From main

117

115

114

113

112

111

109

108

107

106

105





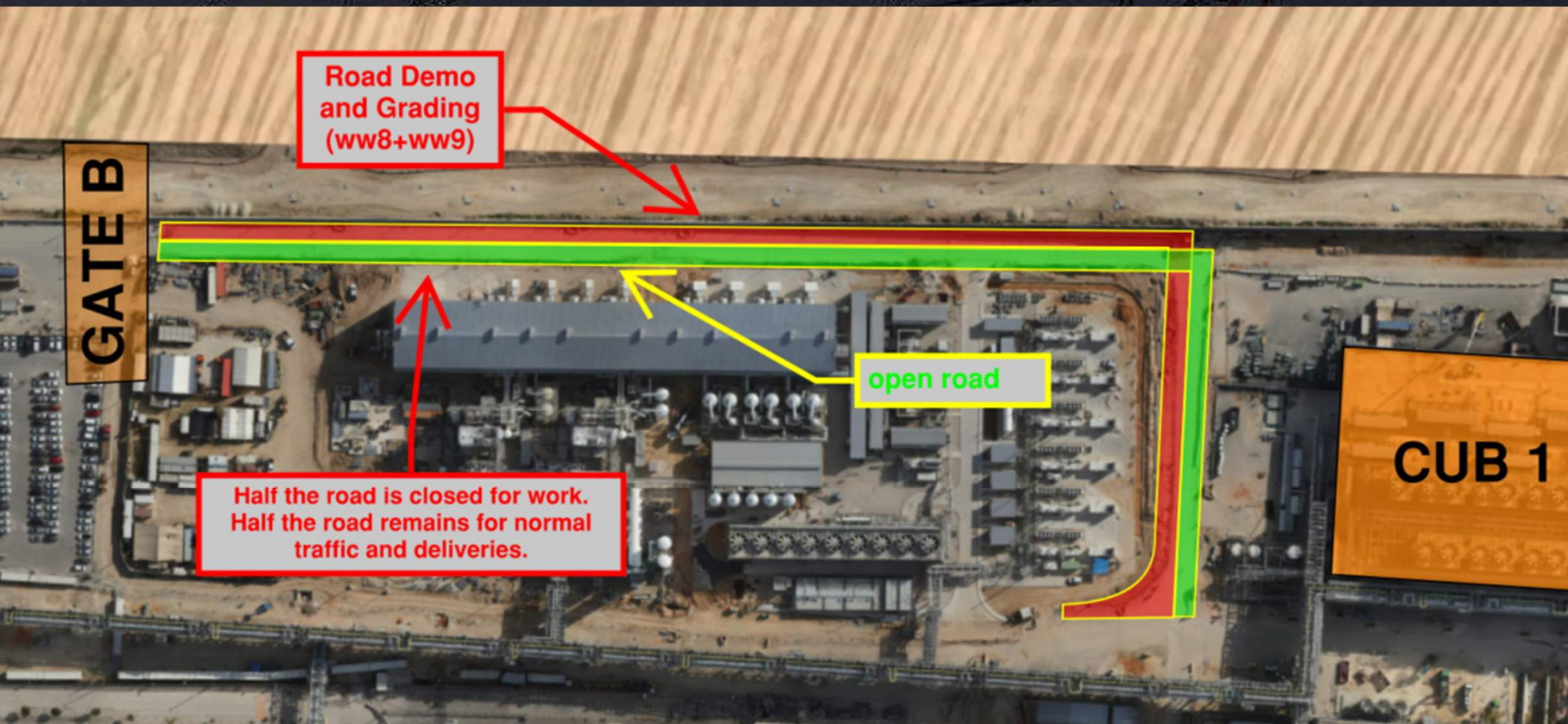
**HOFFMAN CONSTRUCTION COMPANY**



# Daily Coordination Meeting

Site Logistics

North







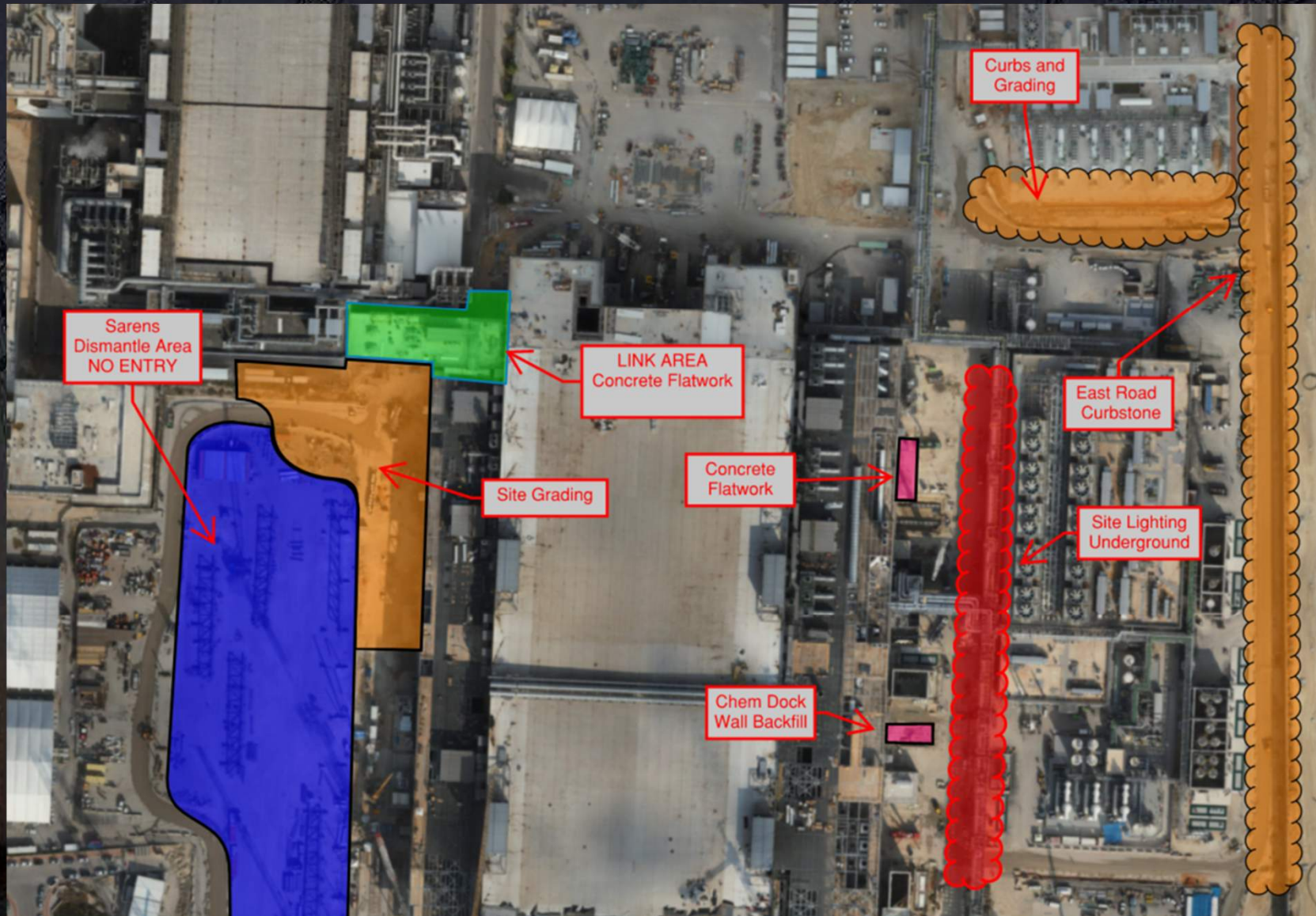
**HOFFMAN CONSTRUCTION COMPANY**



# Daily Coordination Meeting

Site Logistics

North







**HOFFMAN CONSTRUCTION COMPANY**



# Daily Coordination Meeting

Site Logistics

South





# Ramadan Fast

This is another reminder about the start of Ramadan fasting. It is important to ensure more field checks for teams due to the fast, with frequent breaks as needed.

We respect everyone and share in the joy of the holiday, but we must remember that we are still on our work site. Therefore, work should be planned in the safest and most efficient way possible. If there are changes between shifts, communication with the HCC should be coordinated to avoid misunderstandings. We remind everyone that from Hoffmann's perspective, work should not be affected. If there are individuals unable to attend work during this month, alternative arrangements should be made accordingly.



# Daily Coordination Meeting



14:00 Sign In