

Daily Coordination Meeting



14:00 Sign In

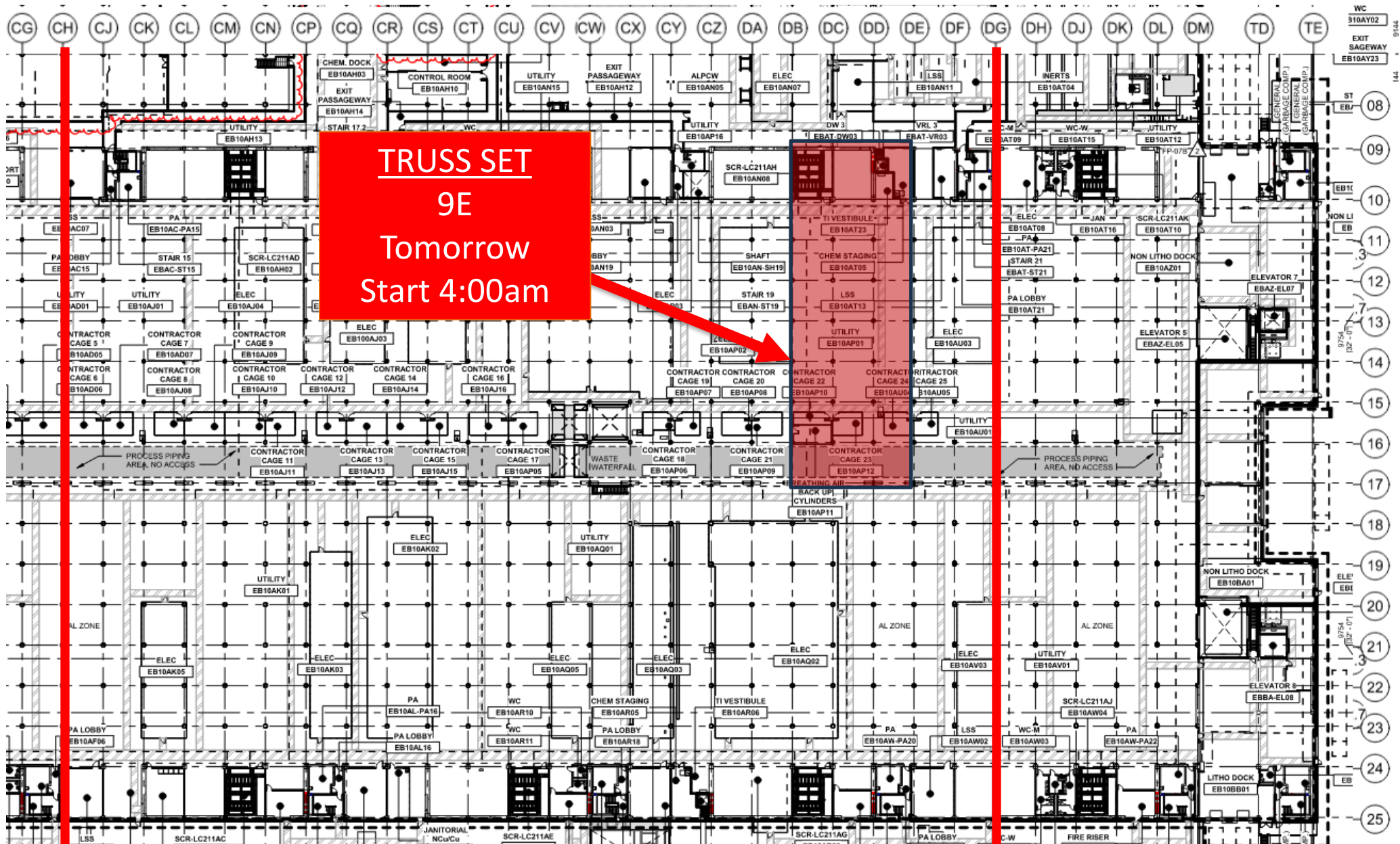
Daily Coordination Meeting

General Topics:

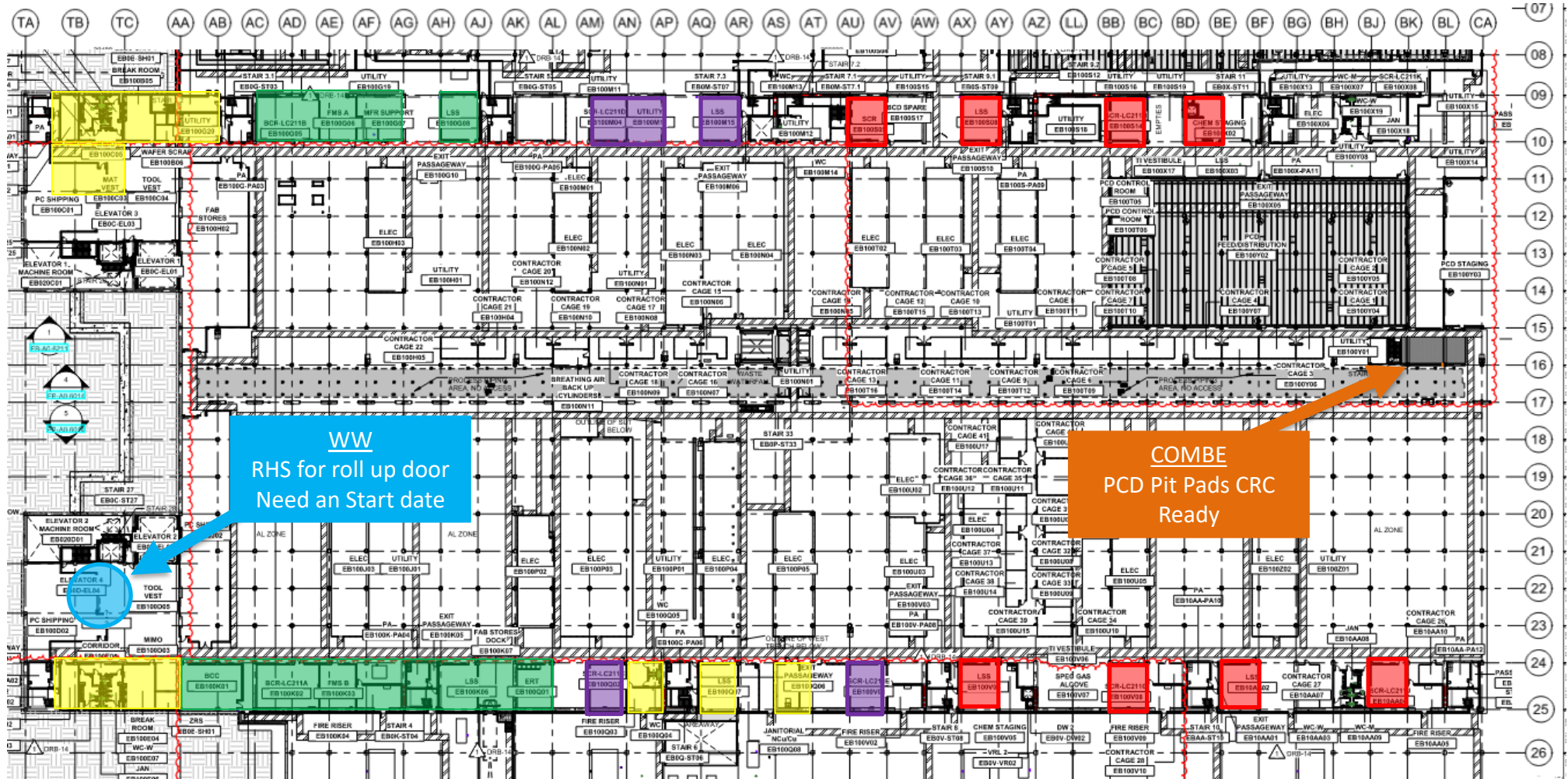
- Crane incident yesterday
 - Minor injuries
 - No one goes into the area without Keylee or Abbas' ok (includes subs)
 - All cranes shut down today. Tower cranes and truss pick on for tomorrow
- No night shift Thur 07 Nov jobsite closes at 17:00, jobsite reopens 06:30 Fri 08 Nov



UTILITY LEVEL TRUSS



UTILITY LEVEL MOD1



Pre-mold Rem dismantle
Should be uninstll

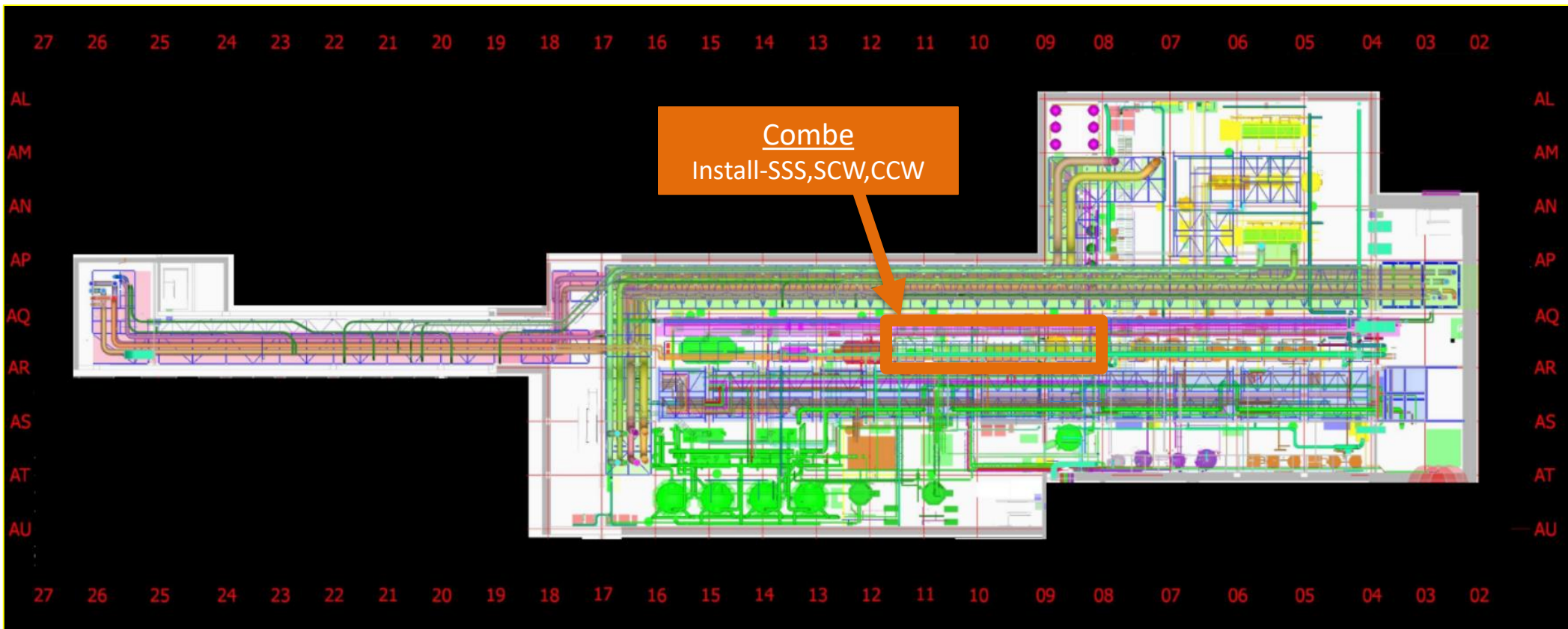
BELFOR
Mold remediation

ELRAM
Drywall install

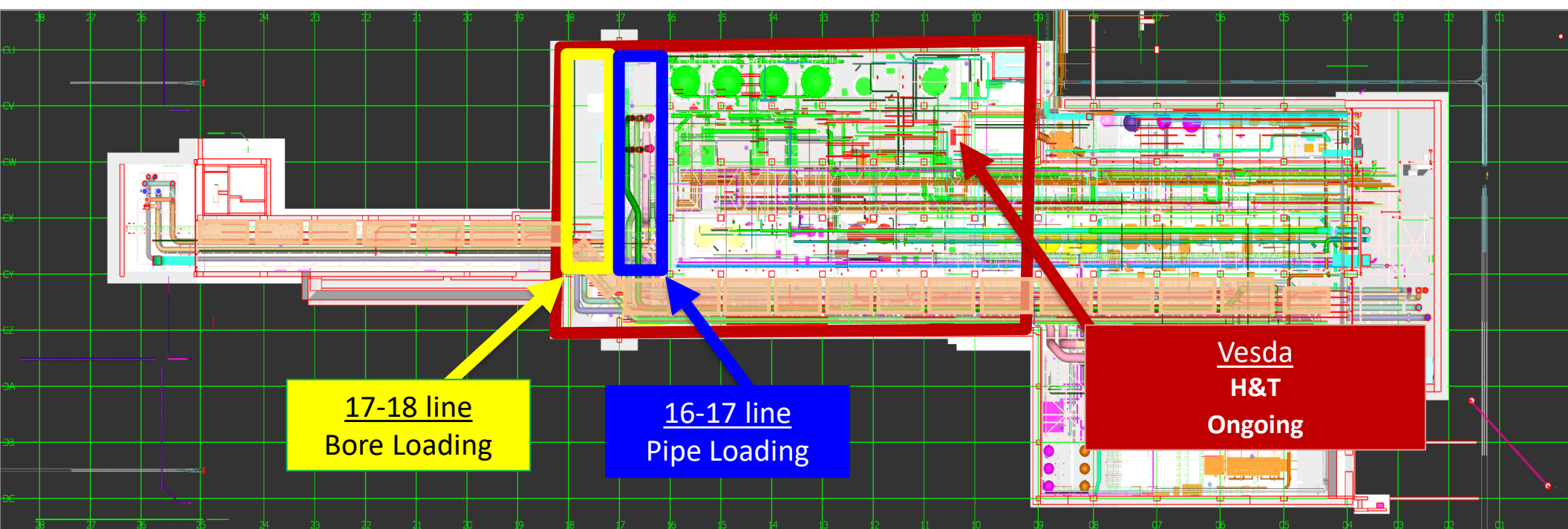
MEP+Elctrical
Ready for re-install



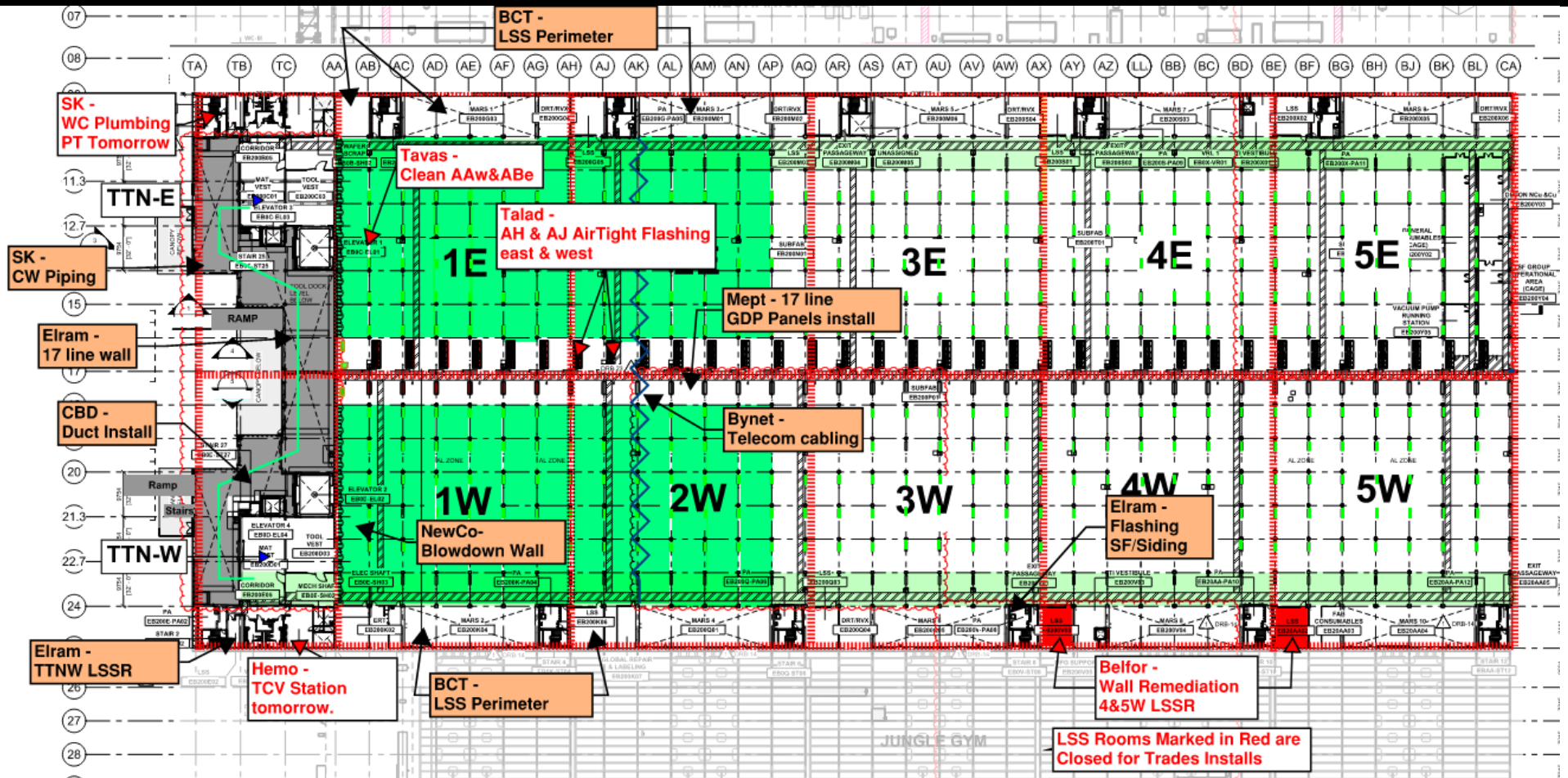
SUT 38.1 LEVEL



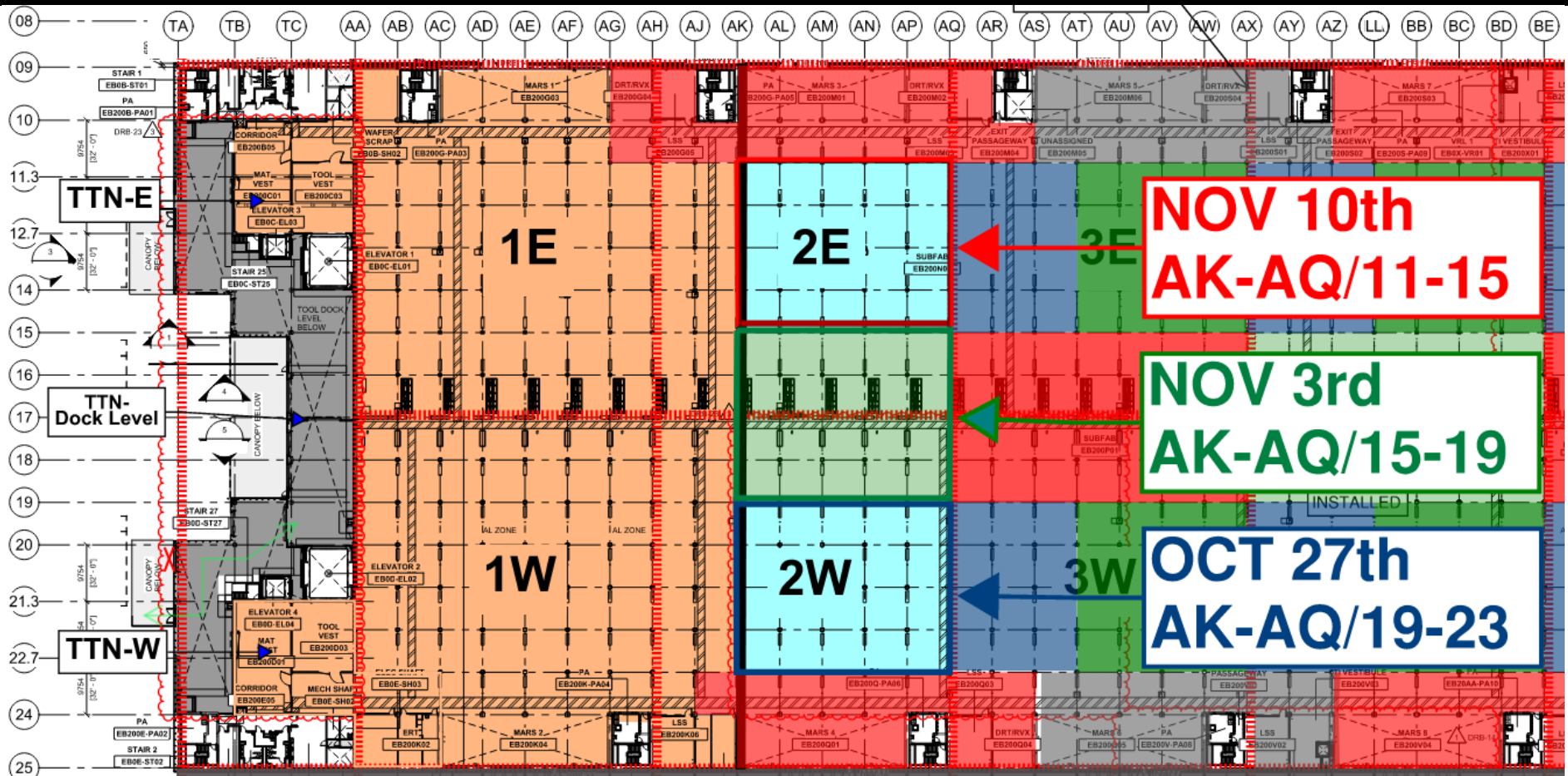
SUT 38.2 LEVEL



SUBFAB BUILDOUT MOD 1



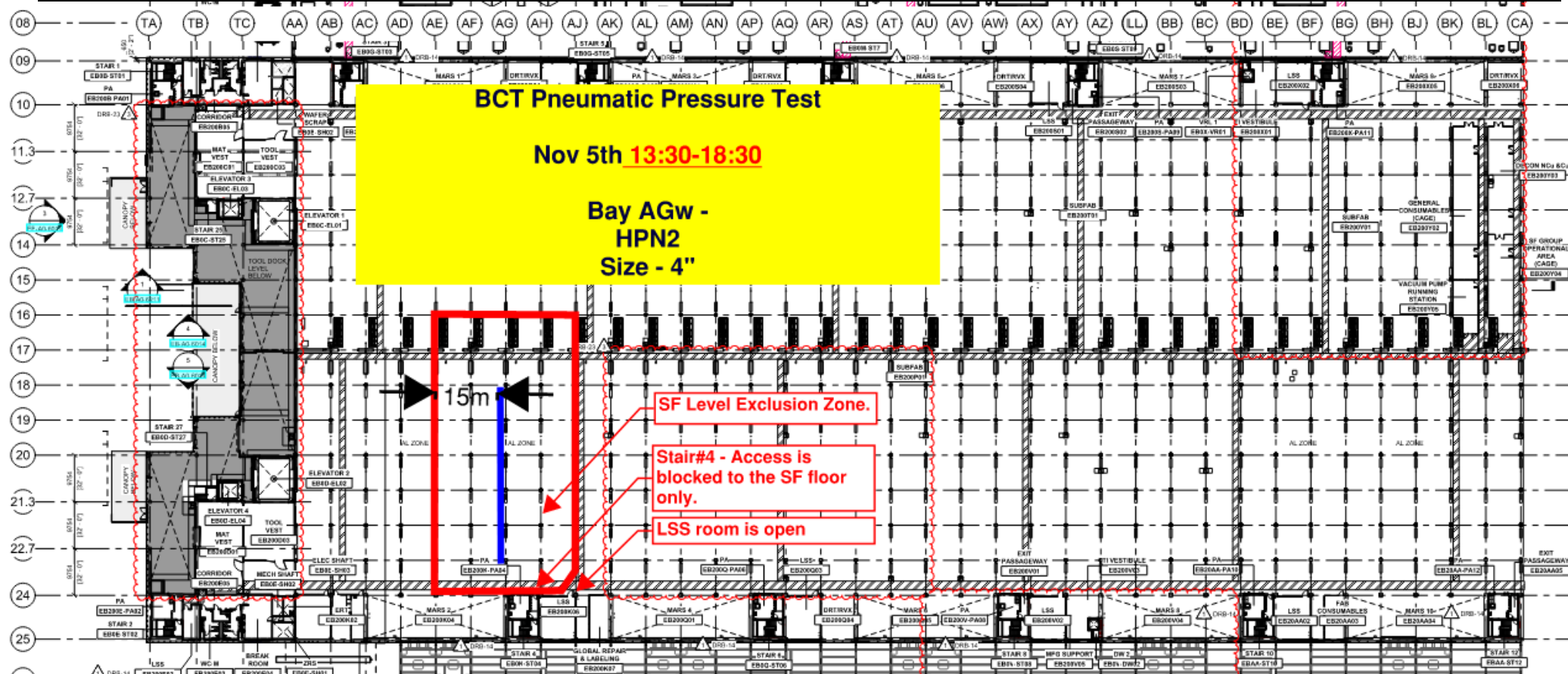
SUBFAB CRC TOPCOAT



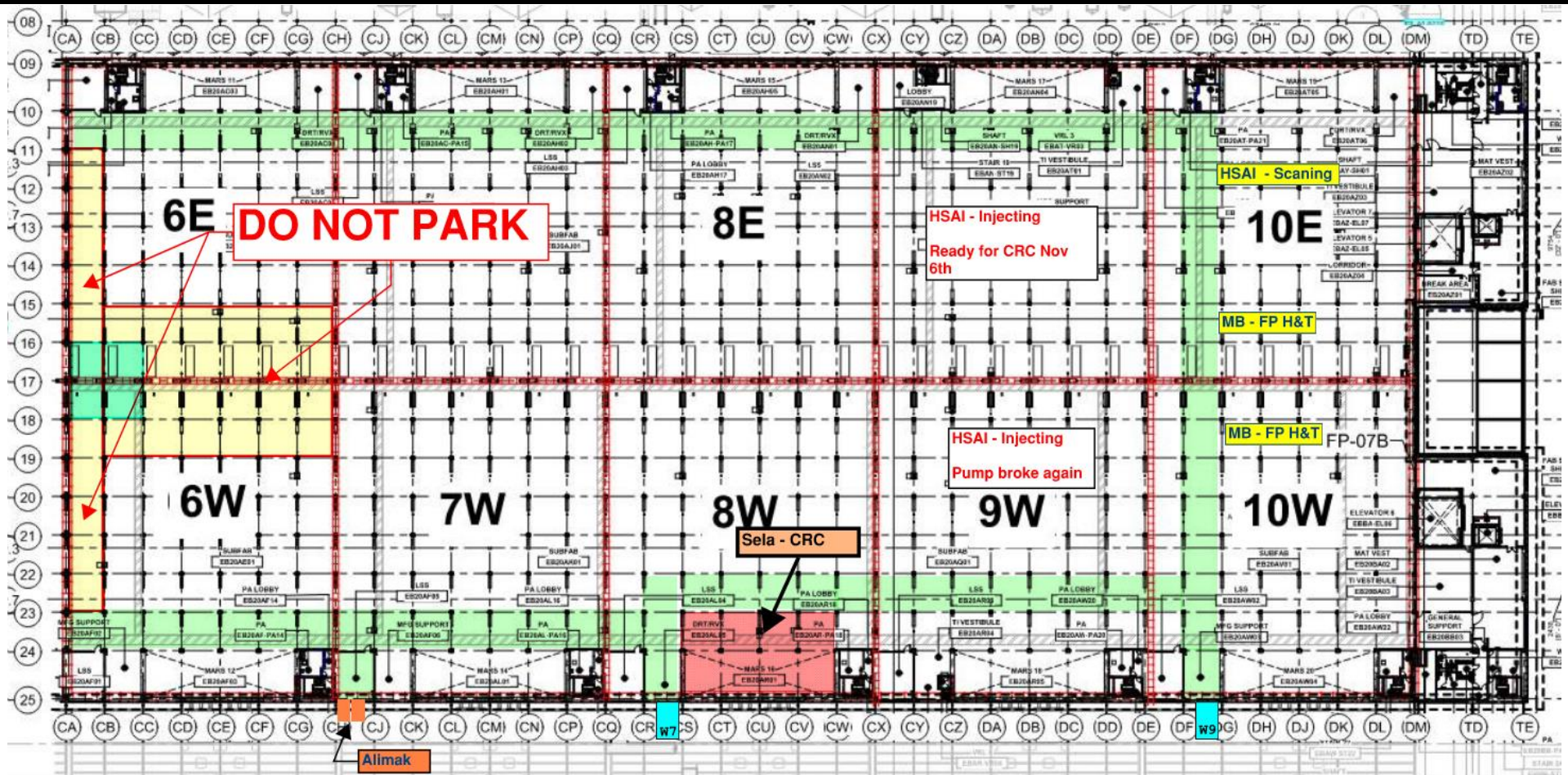
BCT Pressure Test Today

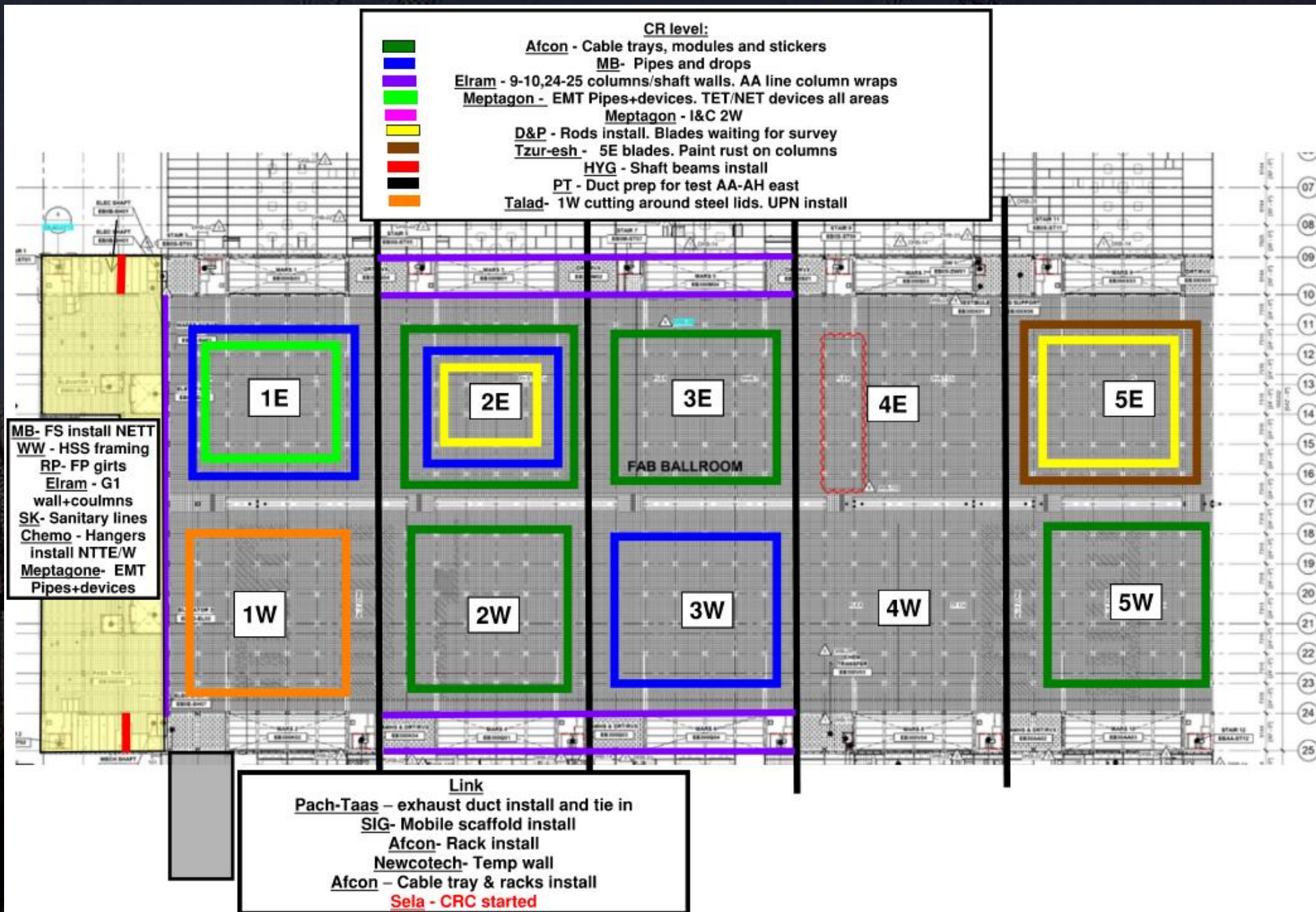
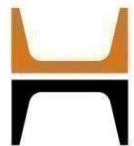
NOT TODAY

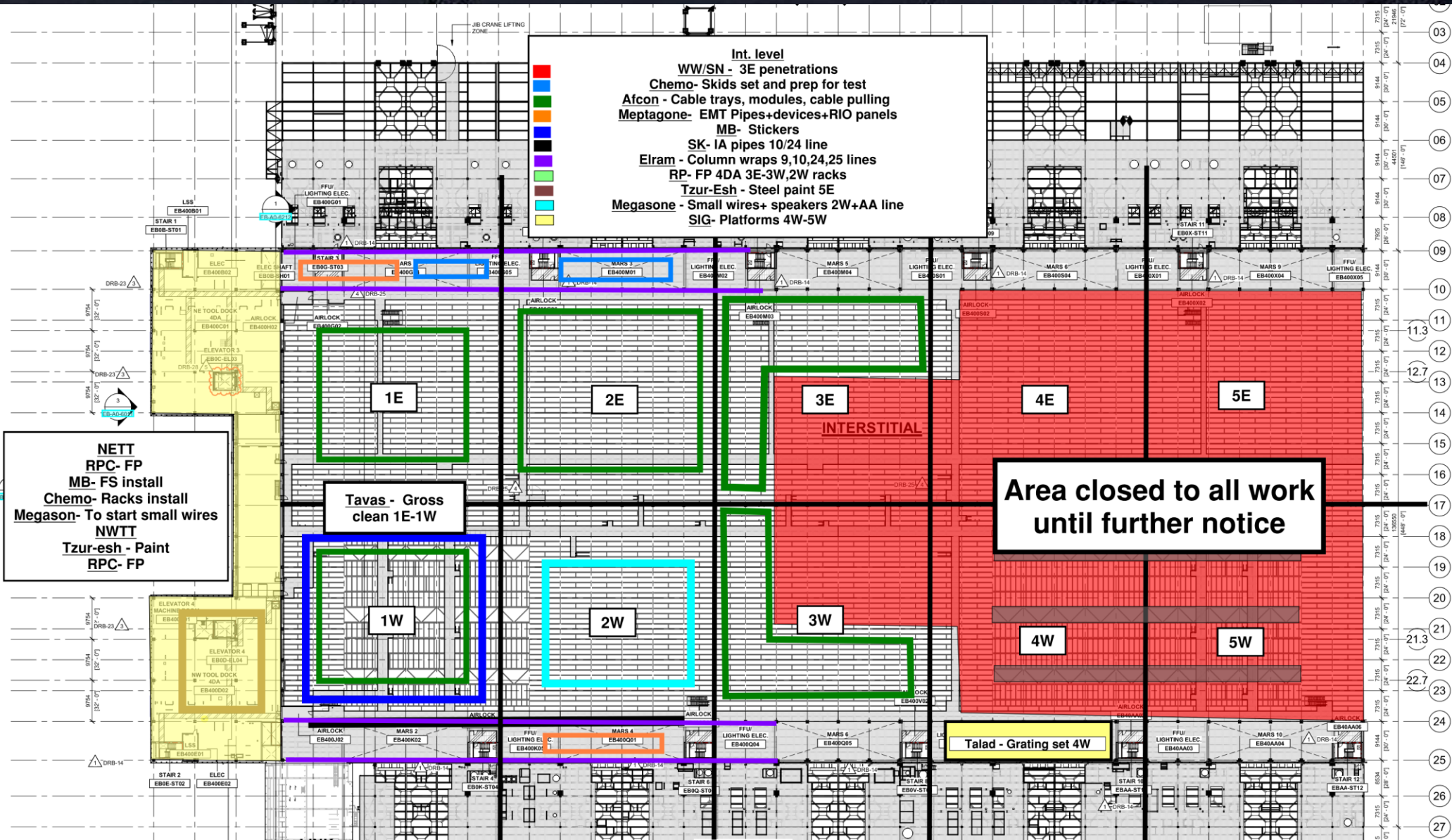
BCT Pressure Test Tomorrow

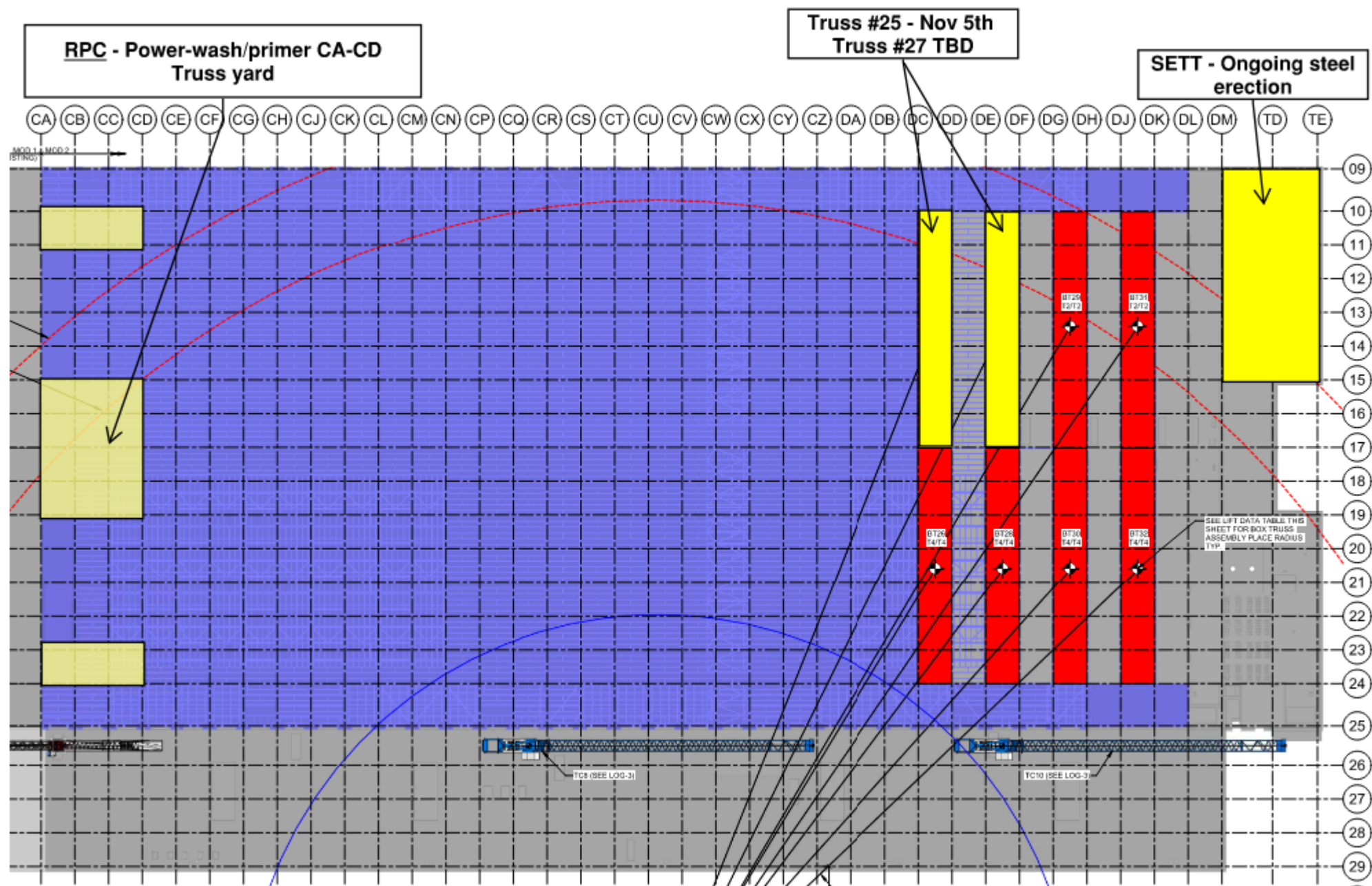


SUBFAB BUILDOUT MOD 2











PL1 – Envelope closure



Keep small Particles levels below 1 million

(particles size 0.5 nm)

(outside air particles level usually above this level)

All we should do is:

Clean up!

Everywhere!

All times!



Keep good housekeeping practice

All you should is making sure your
equipment is properly maintained

Take trash away (to trash bin or
out of Area)

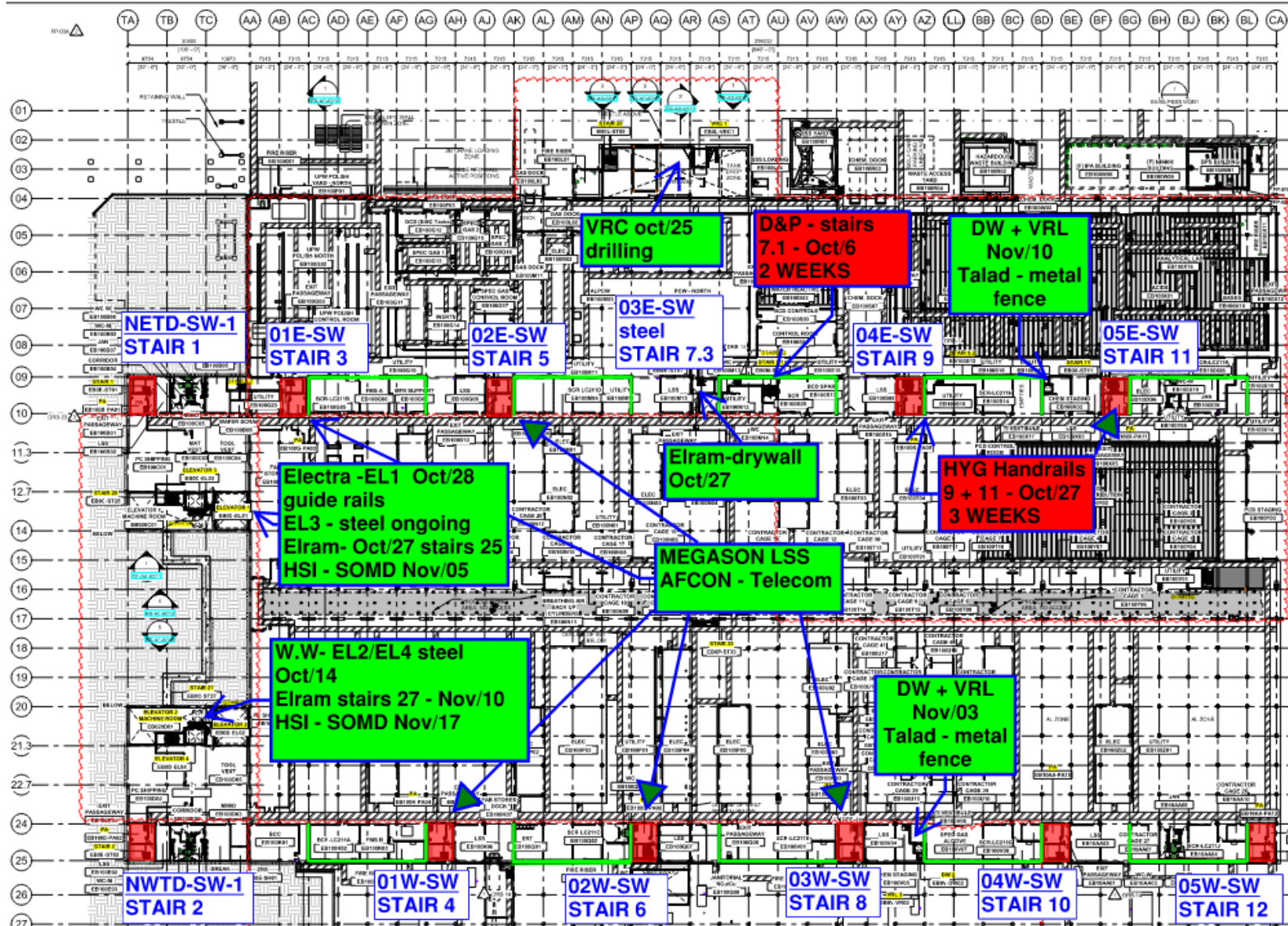
All storage in order and in safe
manner



Keep infrastructure integrity

Damage prevention to CRC
floor, Walls (permanent or
Temporary)

If damage occurs - report
immediately to your
supervisor



[illegible]

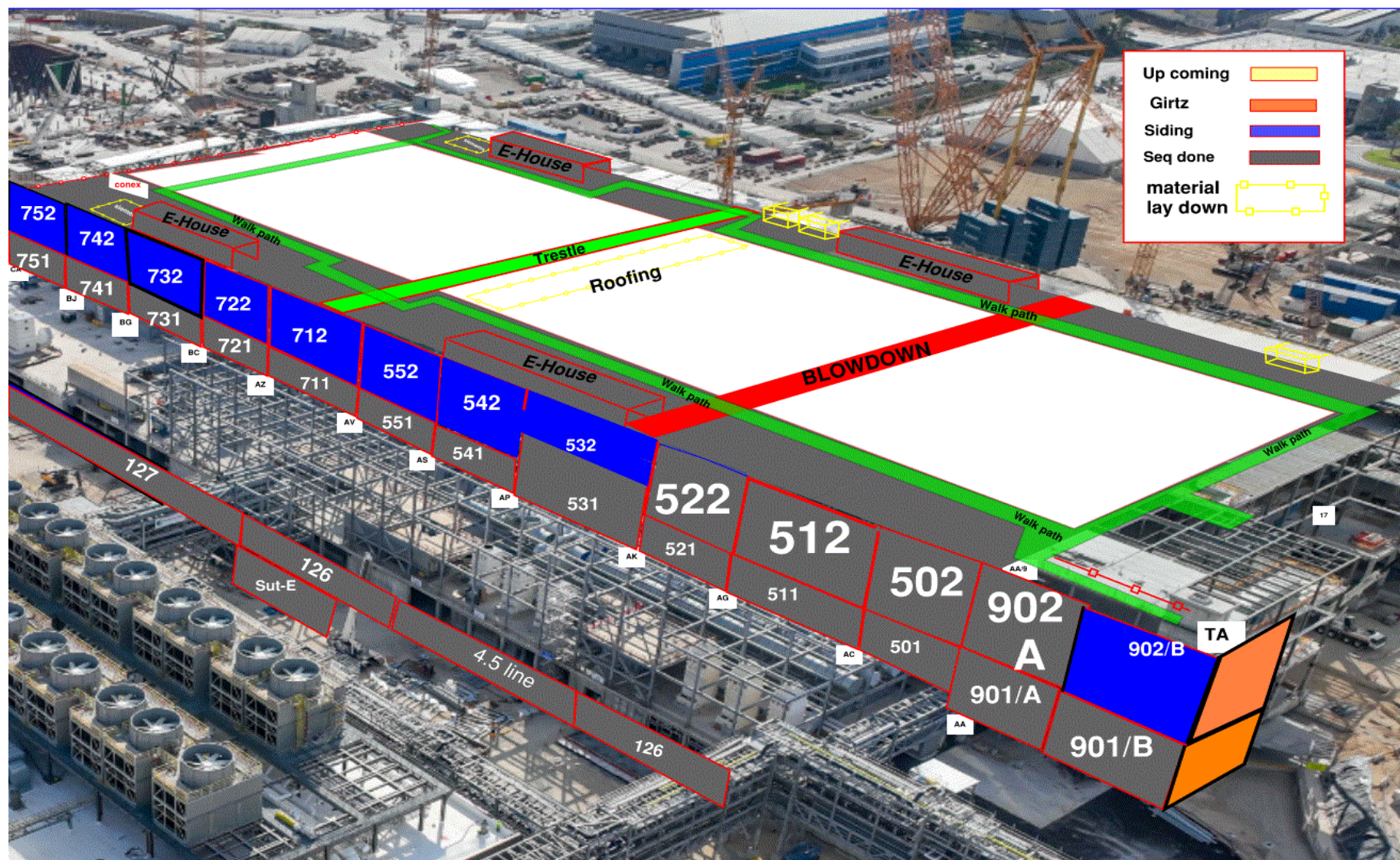
BLOWDOWN 30%

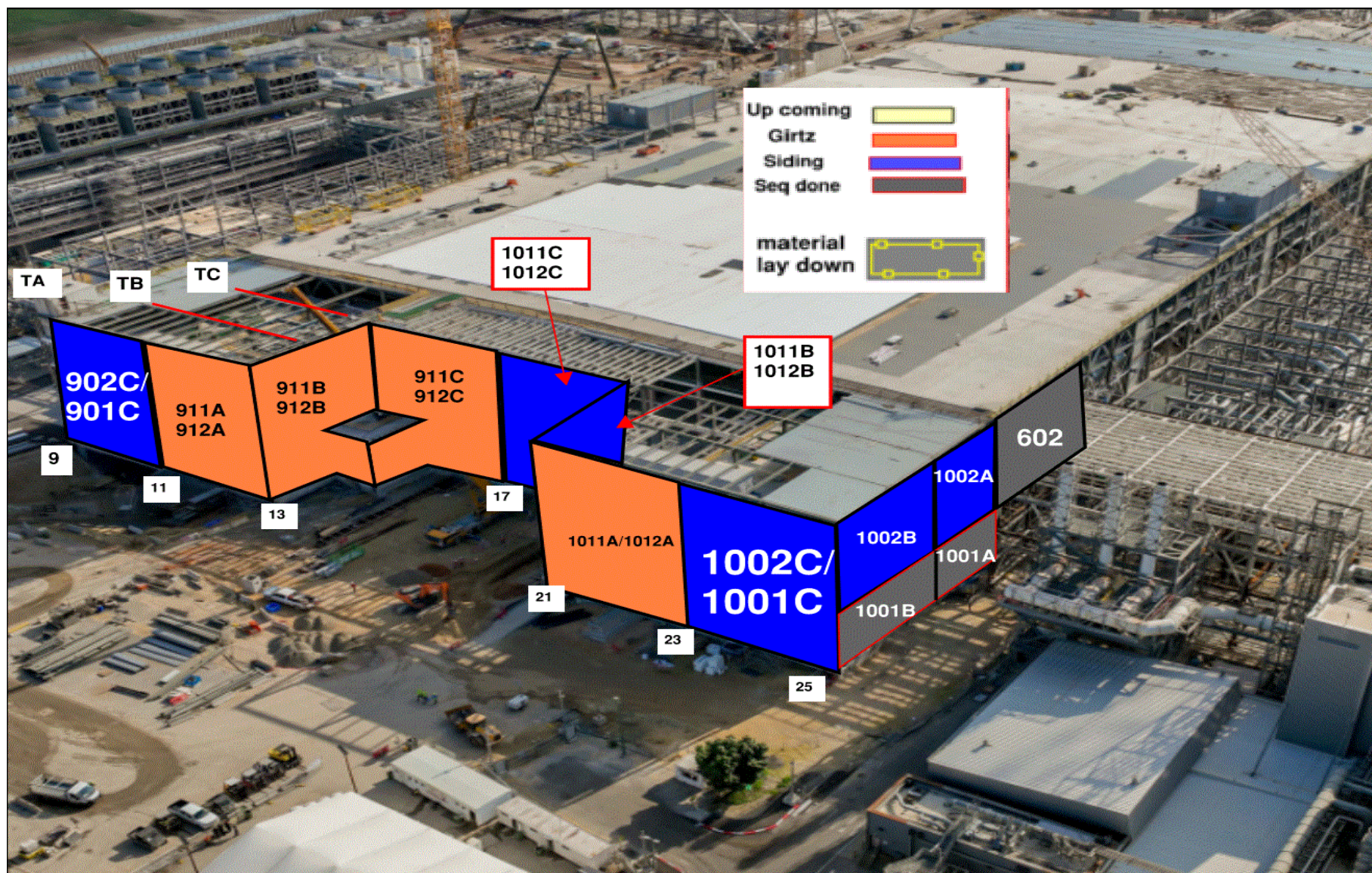
[illegible]

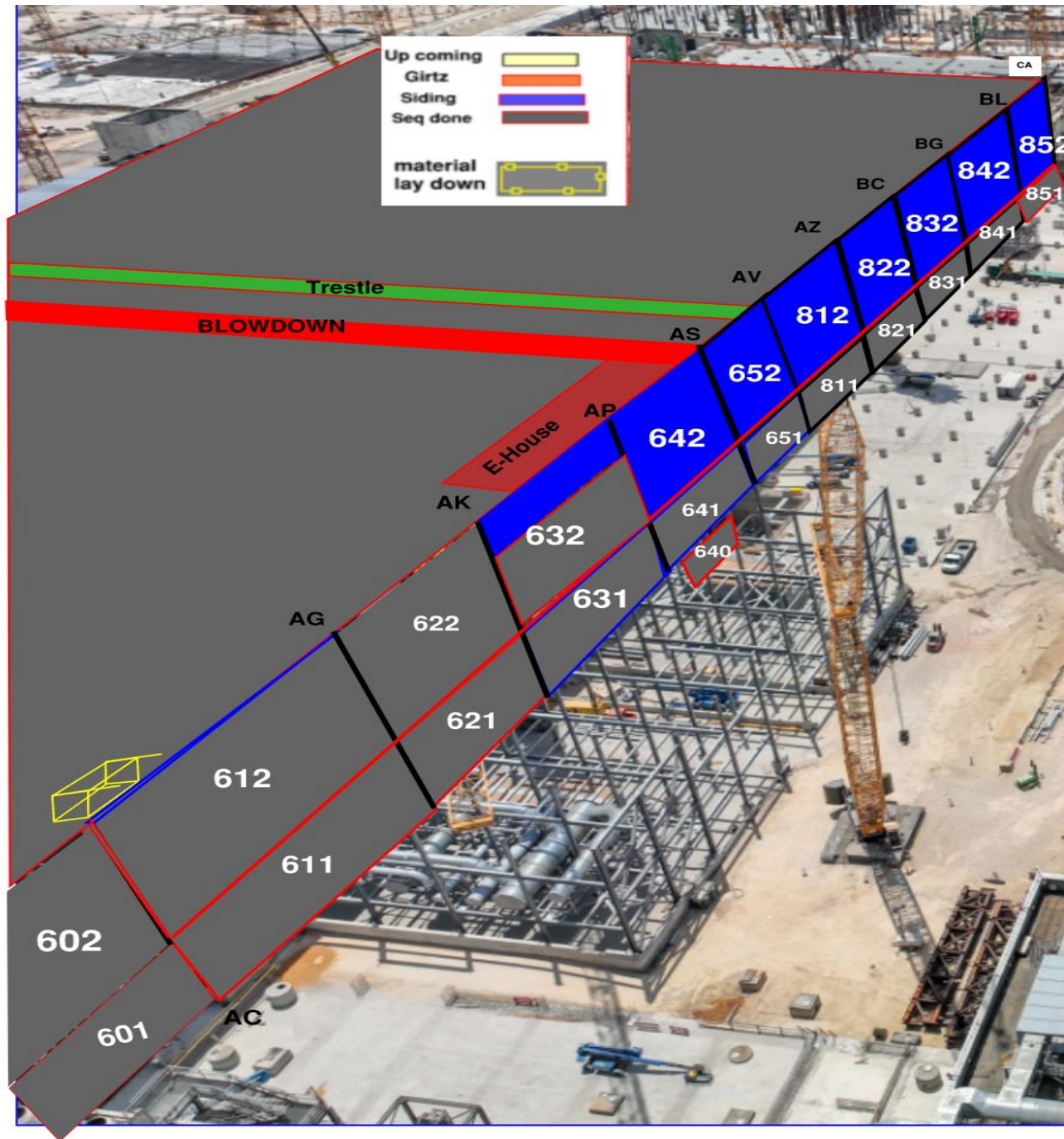
Siding - West FAB - JYG

BLOWDOWN 30%

	TA	TB	TC	TD	TE	TF	TG	TH	TI	TJ	TK	TL	TM	TN	TO	TP	TQ	TR	TS	TT	TU	TV	TW	TX	TY	TZ	TA	TB	TC	TD	TE	TF	TG	TH	TI	TJ	TK	TL	TM	TN																																																																																																																																																																																																																																																																																																																																																																																																																																																																																																																																																																																																																																																																																																																																																																																																																																																																																																																																																																																															
	1001 / 1002				601 / 602				611 / 612				621 / 622				631 / 632				641 / 642				651 / 652				661 / 662				671 / 672				681 / 682				691 / 692				701 / 702				711 / 712				721 / 722				731 / 732				741 / 742				751 / 752				761 / 762				771 / 772				781 / 782				791 / 792				801 / 802				811 / 812				821 / 822				831 / 832				841 / 842				851 / 852																																																																																																																																																																																																																																																																																																																																																																																																																																																																																																																																																																																																																																																																																																																																																																																																																																																																																																																														
Total	28	28	28	28	16	16		31	31	31	31	31	31	31	31	31	31	31	31	31	31	31	31	31	31	31	31	31	31	31	31	31	31	31	31	31	31	31	31	31	31	31	31	31	31	31	31	31	31	31	31	31	31	31	31	31	31	31	31	31	31	31	31	31	31	31	31	31	31	31	31	31	31	31	31	31	31	31	31	31	31	31	31	31	31	31	31	31	31	31	31	31	31	31	31	31	31	31	31	31	31	31	31	31	31	31	31	31	31	31	31	31	31	31	31	31	31	31	31	31	31	31	31	31	31	31	31	31	31	31	31	31	31	31	31	31	31	31	31	31	31	31	31	31	31	31	31	31	31	31	31	31	31	31	31	31	31	31	31	31	31	31	31	31	31	31	31	31	31	31	31	31	31	31	31	31	31	31	31	31	31	31	31	31	31	31	31	31	31	31	31	31	31	31	31	31	31	31	31	31	31	31	31	31	31	31	31	31	31	31	31	31	31	31	31	31	31	31	31	31	31	31	31	31	31	31	31	31	31	31	31	31	31	31	31	31	31	31	31	31	31	31	31	31	31	31	31	31	31	31	31	31	31	31	31	31	31	31	31	31	31	31	31	31	31	31	31	31	31	31	31	31	31	31	31	31	31	31	31	31	31	31	31	31	31	31	31	31	31	31	31	31	31	31	31	31	31	31	31	31	31	31	31	31	31	31	31	31	31	31	31	31	31	31	31	31	31	31	31	31	31	31	31	31	31	31	31	31	31	31	31	31	31	31	31	31	31	31	31	31	31	31	31	31	31	31	31	31	31	31	31	31	31	31	31	31	31	31	31	31	31	31	31	31	31	31	31	31	31	31	31	31	31	31	31	31	31	31	31	31	31	31	31	31	31	31	31	31	31	31	31	31	31	31	31	31	31	31	31	31	31	31	31	31	31	31	31	31	31	31	31	31	31	31	31	31	31	31	31	31	31	31	31	31	31	31	31	31	31	31	31	31	31	31	31	31	31	31	31	31	31	31	31	31	31	31	31	31	31	31	31	31	31	31	31	31	31	31	31	31	31	31	31	31	31	31	31	31	31	31	31	31	31	31	31	31	31	31	31	31	31	31	31	31	31	31	31	31	31	31	31	31	31	31	31	31	31	31	31	31	31	31	31	31	31	31	31	31	31	31	31	31	31	31	31	31	31	31	31	31	31	31	31	31	31	31	31	31	31	31	31	31	31	31	31	31	31	31	31	31	31	31	31	31	31	31	31	31	31	31	31	31	31	31	31	31	31	31	31	31	31	31	31	31	31	31	31	31	31	31	31	31	31	31	31	31	31	31	31	31	31	31	31	31	31	31	31	31	31	31	31	31	31	31	31	31	31	31	31	31	31	31	31	31	31	31	31	31	31	31	31	31	31	31	31	31	31	31	31	31	31	31	31	31	31	31	31	31	31	31	31	31	31	31	31	31	31	31	31	31	31	31	31	31	31	31	31	31	31	31	31	31	31	31	31	31	31	31	31	31	31	31	31	31	31	31	31	31	31	31	31	31	31	31	31	31	31	31	31	31	31	31	31	31	31	31	31	31	31	31	31	31	31	31	31	31	31	31	31	31	31	31	31	31	31	31	31	31	31	31	31	31	31	31	31	31	31	31	31	31	31	31	31	31	31	31	31	31	31	31	31	31	31	31	31	31	31	31	31	31	31	31	31	31	31	31	31	31	31	31	31	31	31	31	31	31	31	31	31	31	31	31	31	31	31	31	31	31	31	31	31	31	31	31	31	31	31	31	31	31	31	31	31	31	31	31	31	31	31	31	31	31	31	31	31	31	31	31	31	31	31	31	31	31	31	31	31	31	31	31	31	31	31	31	31	31	31	31	31	31	31	31	31	31	31	31	31	31	31	31	31	31	31	31	31	31	31	31	31	31	31	31	31	31	31	31	31	31	31	31	31	31	31	31	31	31	31	31	31	31	31	31	31	31	31	31	31	31	31	31	31	31	31	31	31	31	31	31	31	31	31	31	31	31	31	31	31	31	31	31	31	31	31	31	31	31	31	31	31	31	31	31	31	31	31	31	31	31	31	31	31	31	31	31	31	31	31	31	31	31	31	31	31	31	31	31	31	31	31	31	31	31	31	31	31	31	31	31	31	31	31	31	31	31	31	31	31	31	31	31	31	31	31	31	31	31	31	31	31	31	31	31	31	31	31	31	31	31	31	31	31	31	31	31	31	31	31	31	31	31	31	31	31	31	31	31	31	31	31	31	31	31	31	31	31	31	31	31	3







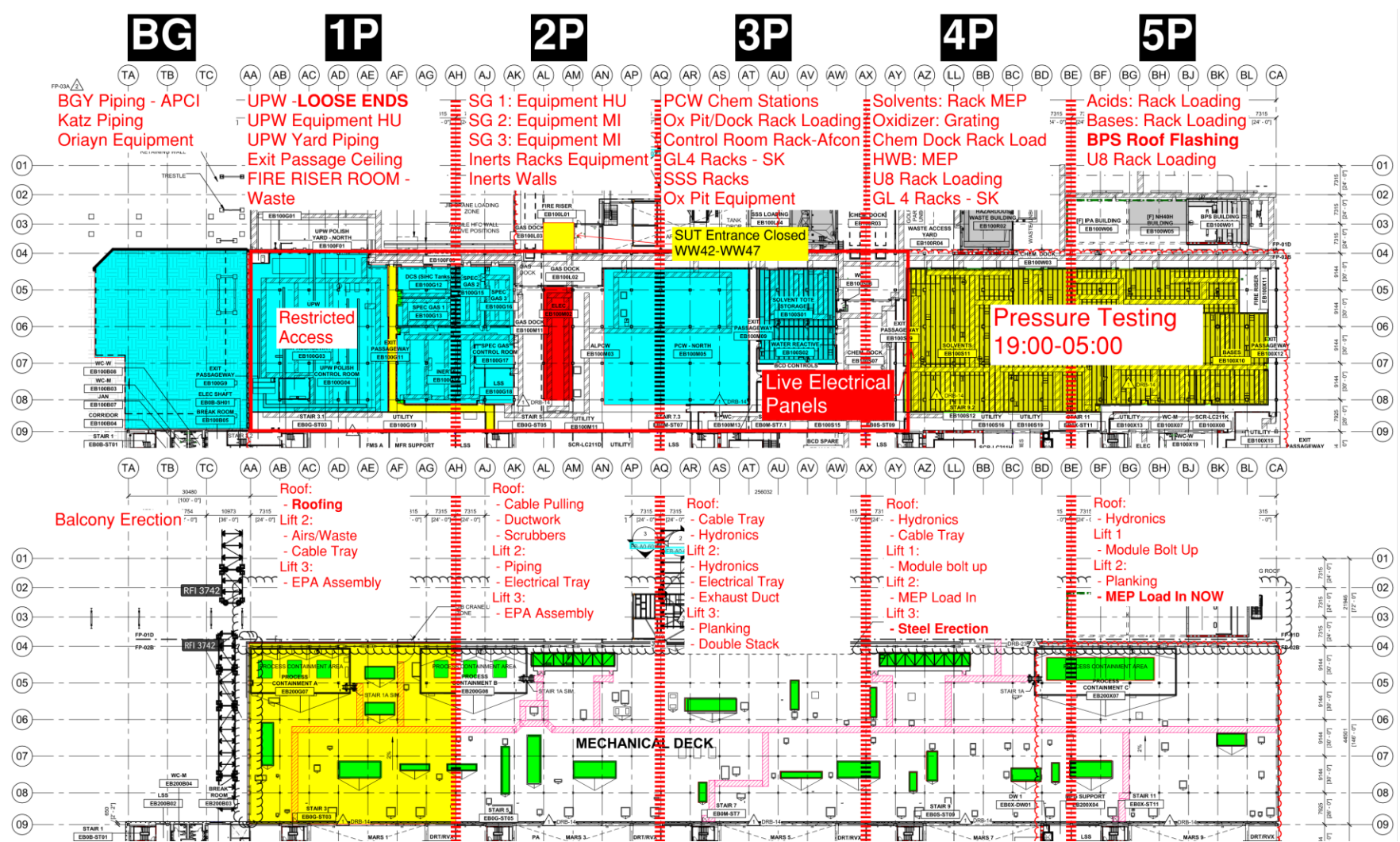
X

—

PSSS.1

Utility Level 1YA

PSSS Roof 2SA



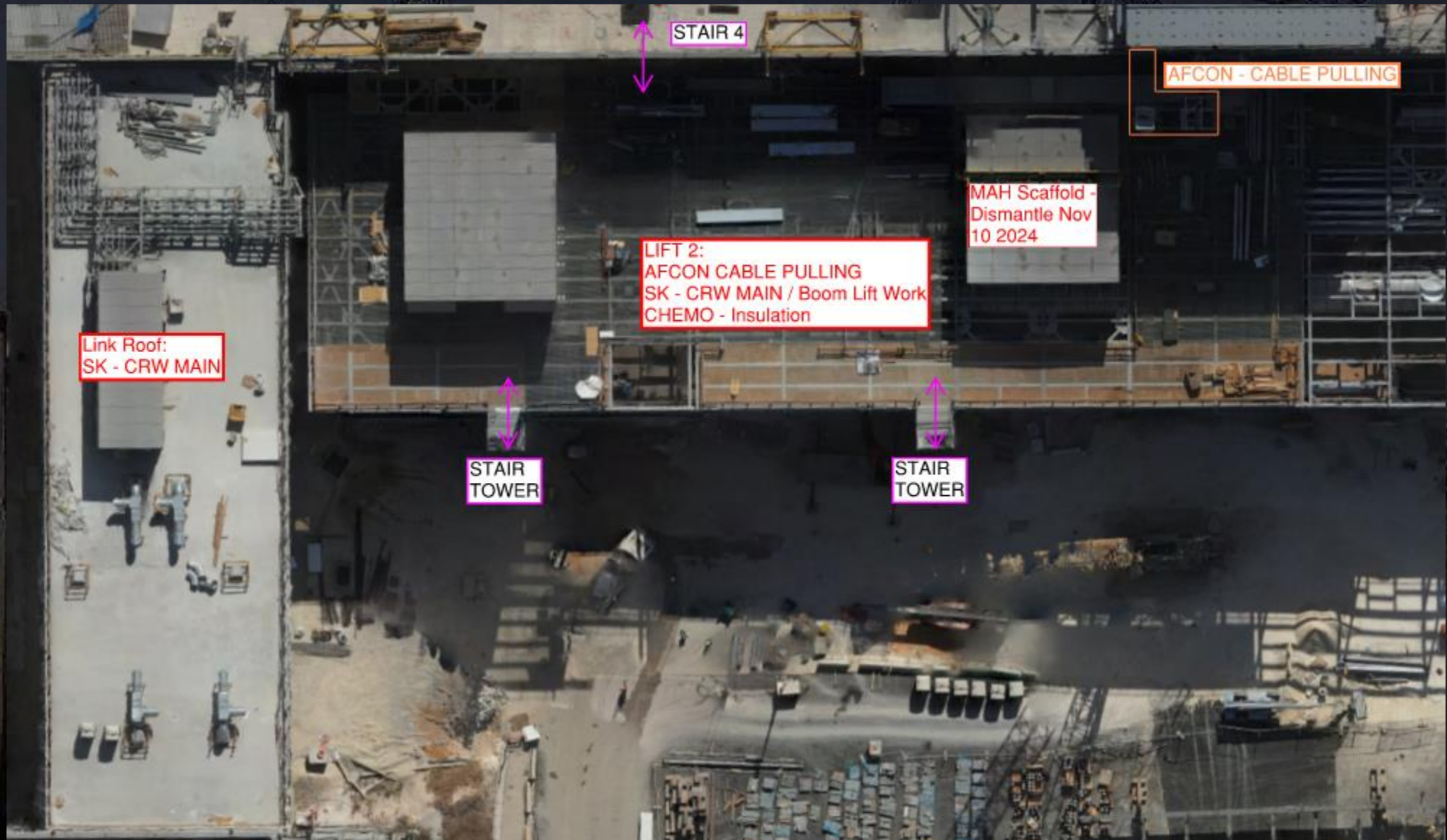
PSSS.2



Roof:
- Scrubber Sets 05/11



WJG 01J, 02J LIFT 2 & 3



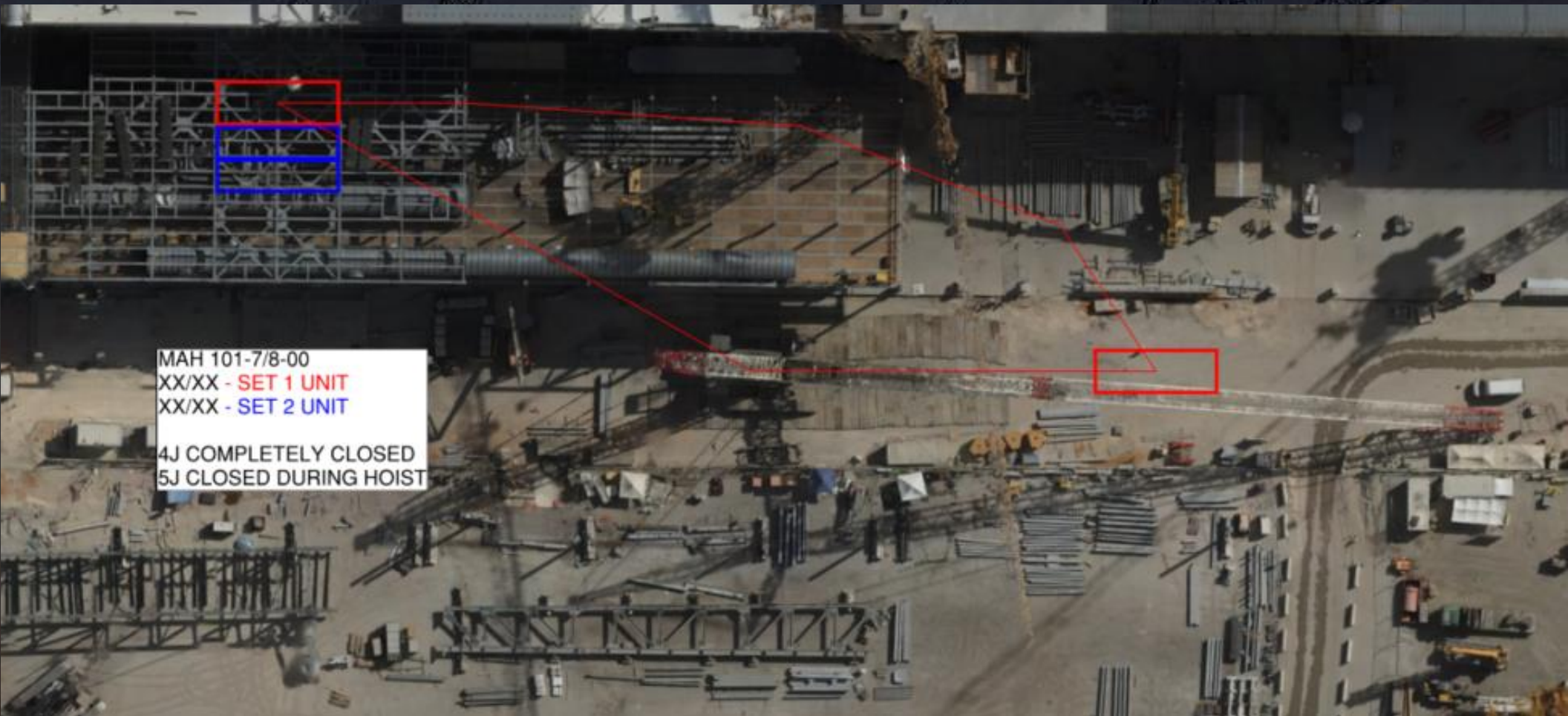


WJG 03J, 04J, 05J LIFT 2 & 3



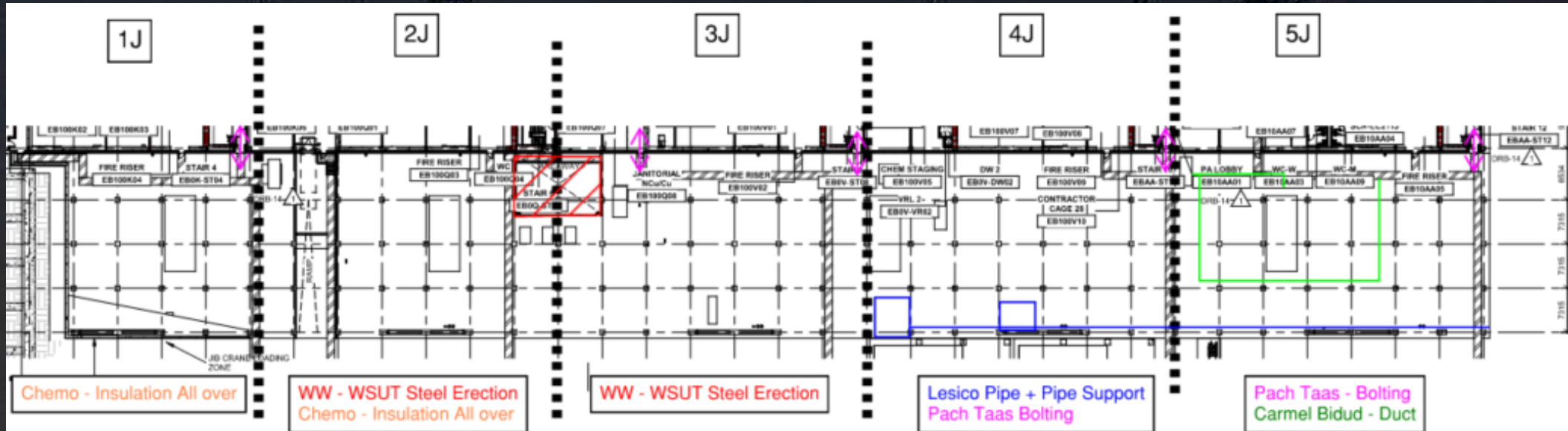


MAH101-7/8-00 SET: TBD

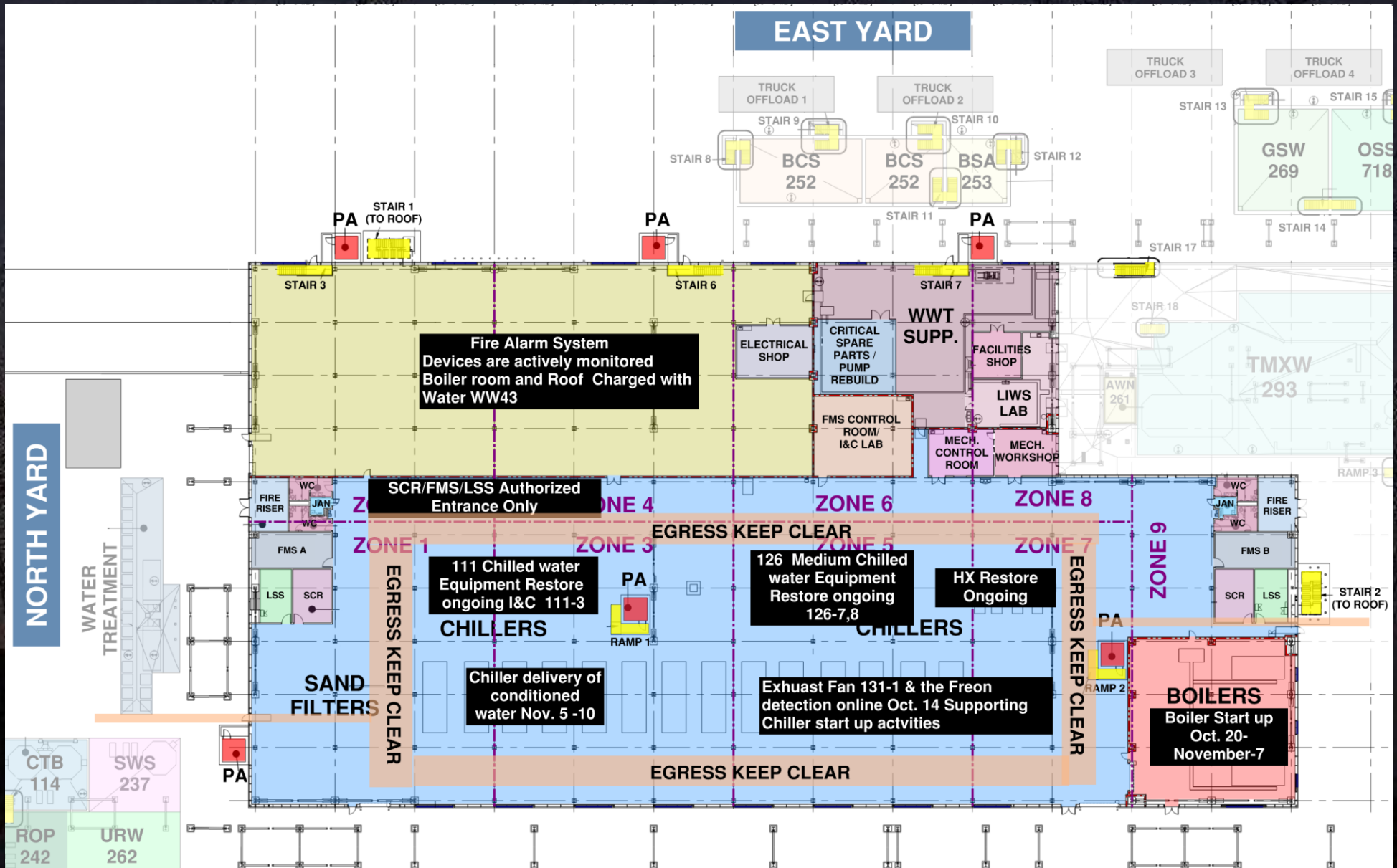




WJG UTILITY LEVEL BUILD OUT



CUB 1

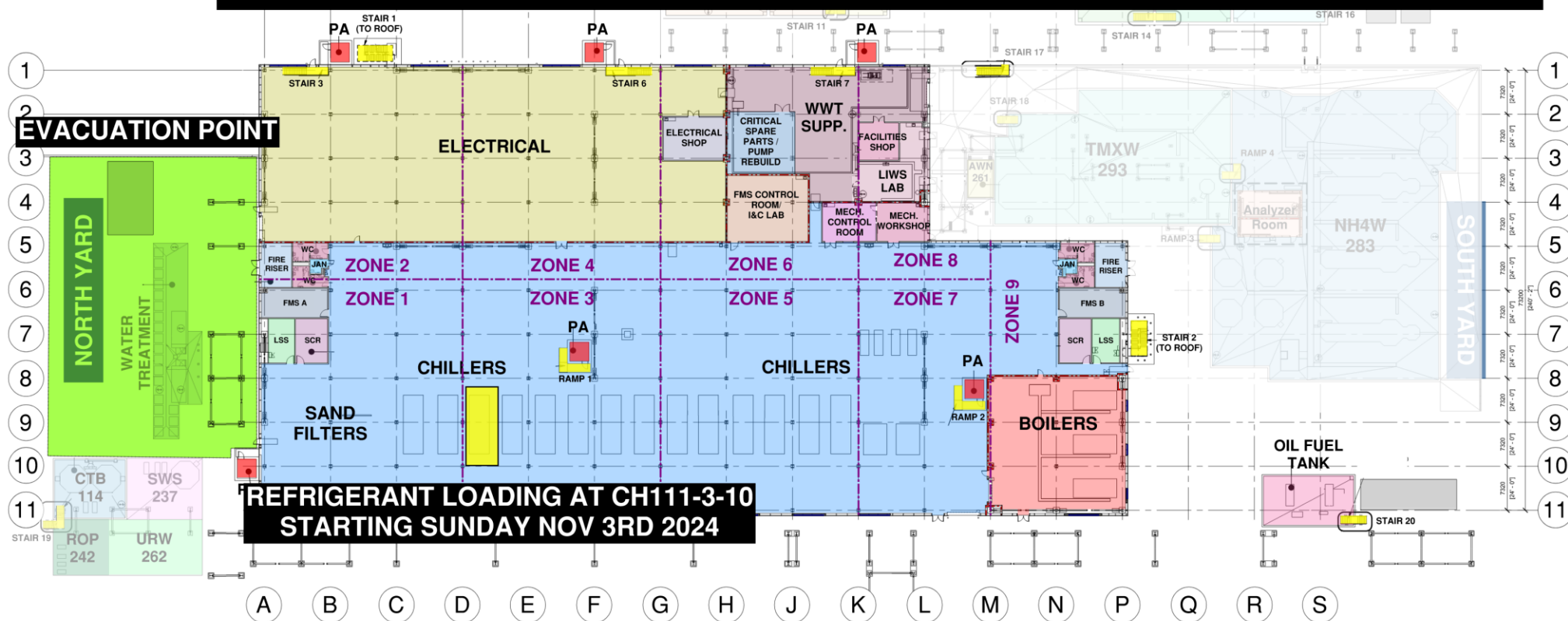


CUB 1 – Refrigerant Loading

CUB 1 COORDINATION MAP

A B C D E F G H J K L M N P Q R S

NOTES:
 1. REFRIGERANT DETECTION SYSTEM IS LIVE.
 2. IF ANY ALARM IS SOUNDED - ALL WORKERS MUST EVACUATE THE BUILDING. HORNS AND STROBES WILL SOUND AND INDICATE A GAS LEAK.
 3. EVACUATION LOCATION TO BE IN NORTH YARD OF CUB 1. UNTIL AREA IS SAFE TO RETURN



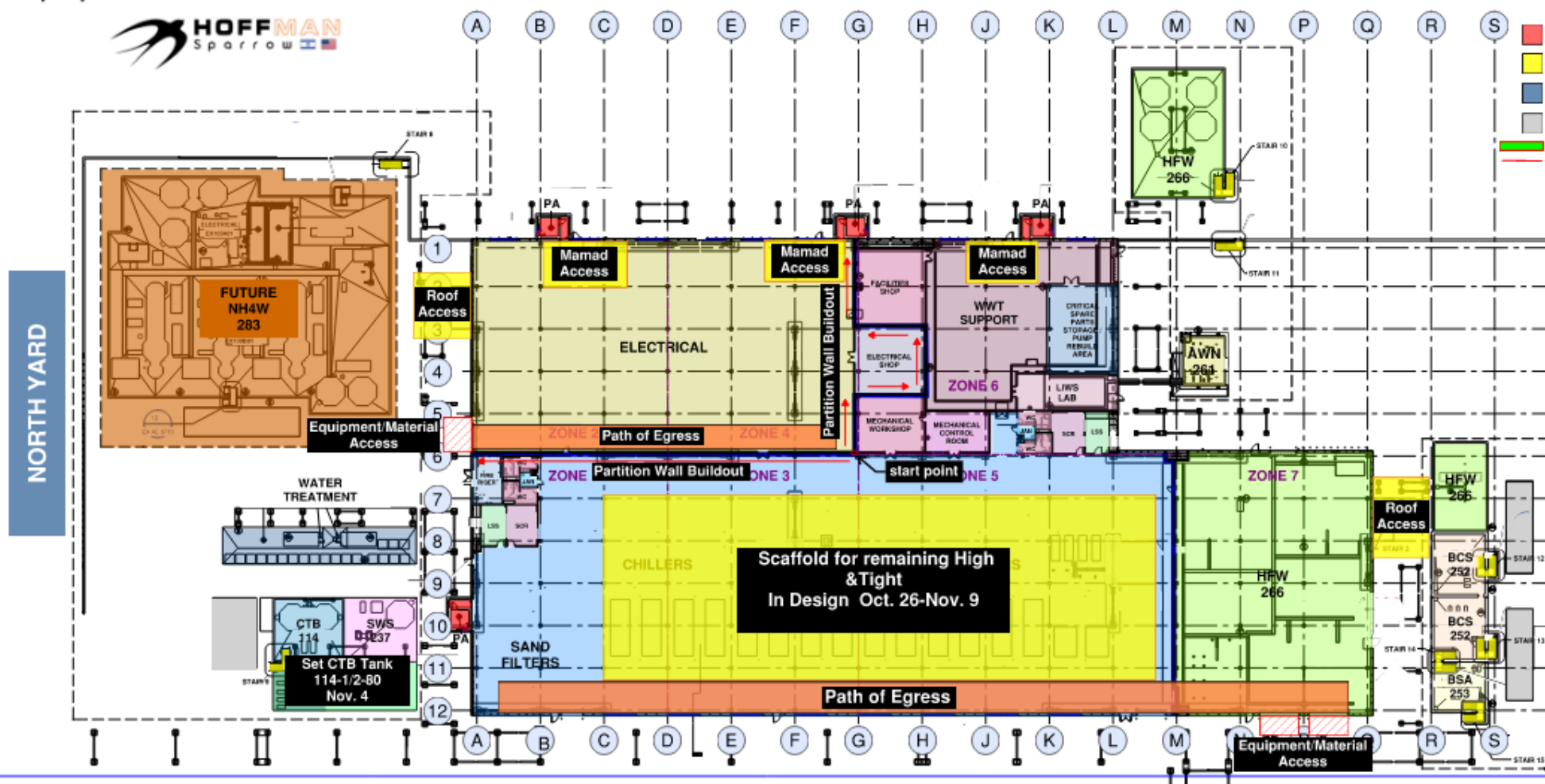
CUB 1 – EXTERIOR/ROOF



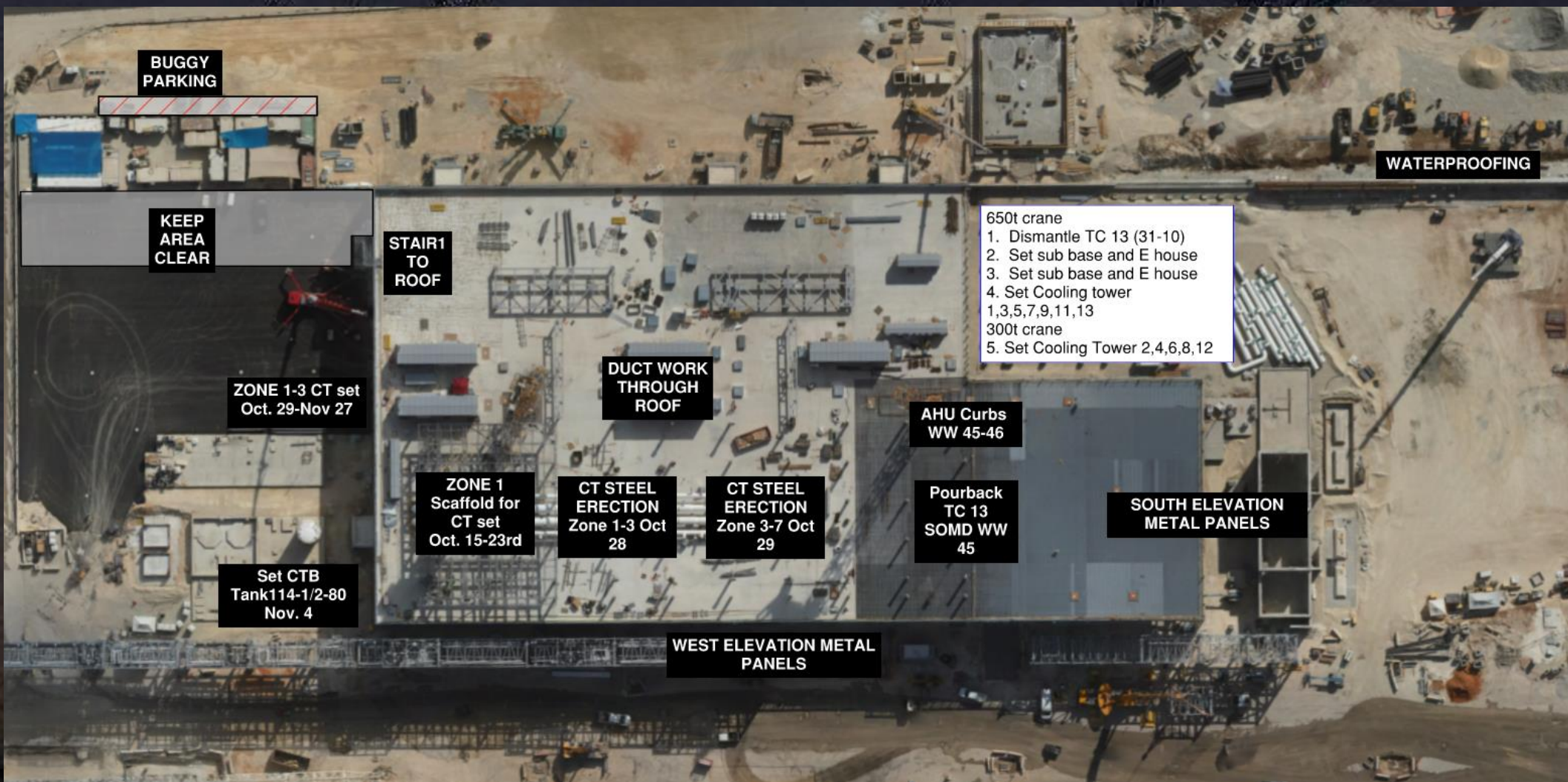


CUB 2

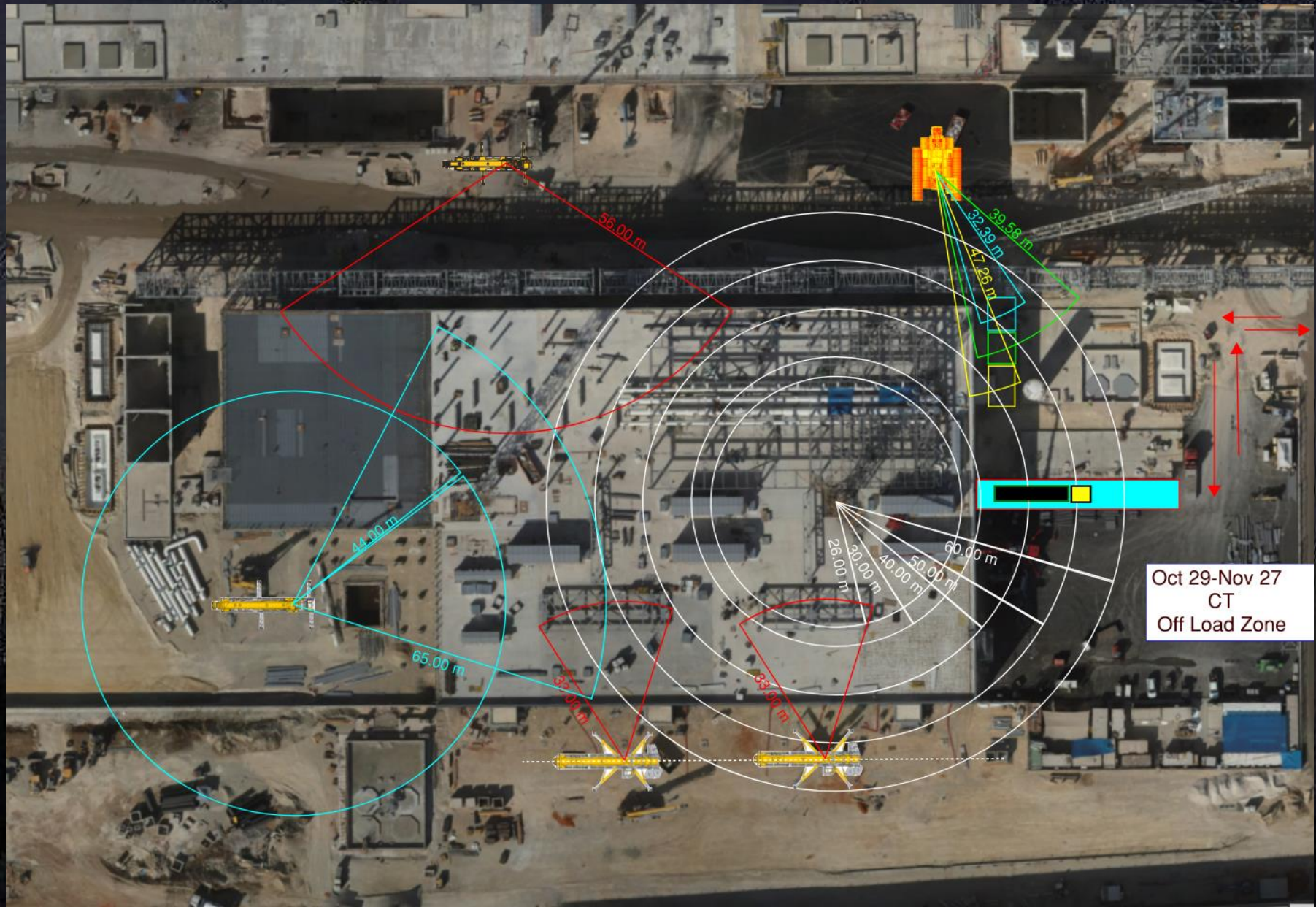
CUB 2 COORDINATION MAP



CUB 2 – EXTERIOR/ROOF



CUB 2 – Crane Logistics

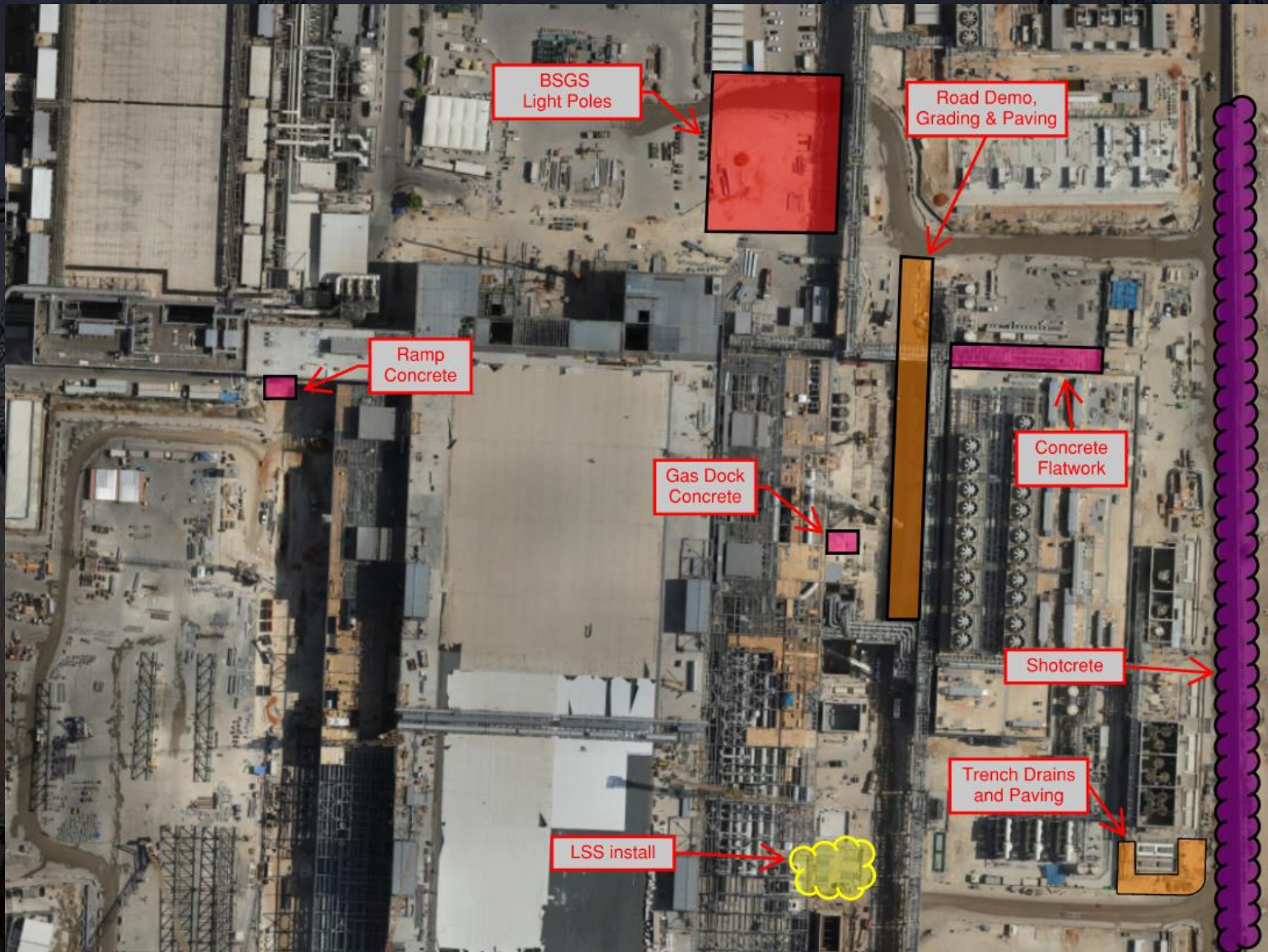




Daily Coordination Meeting

Site Logistics

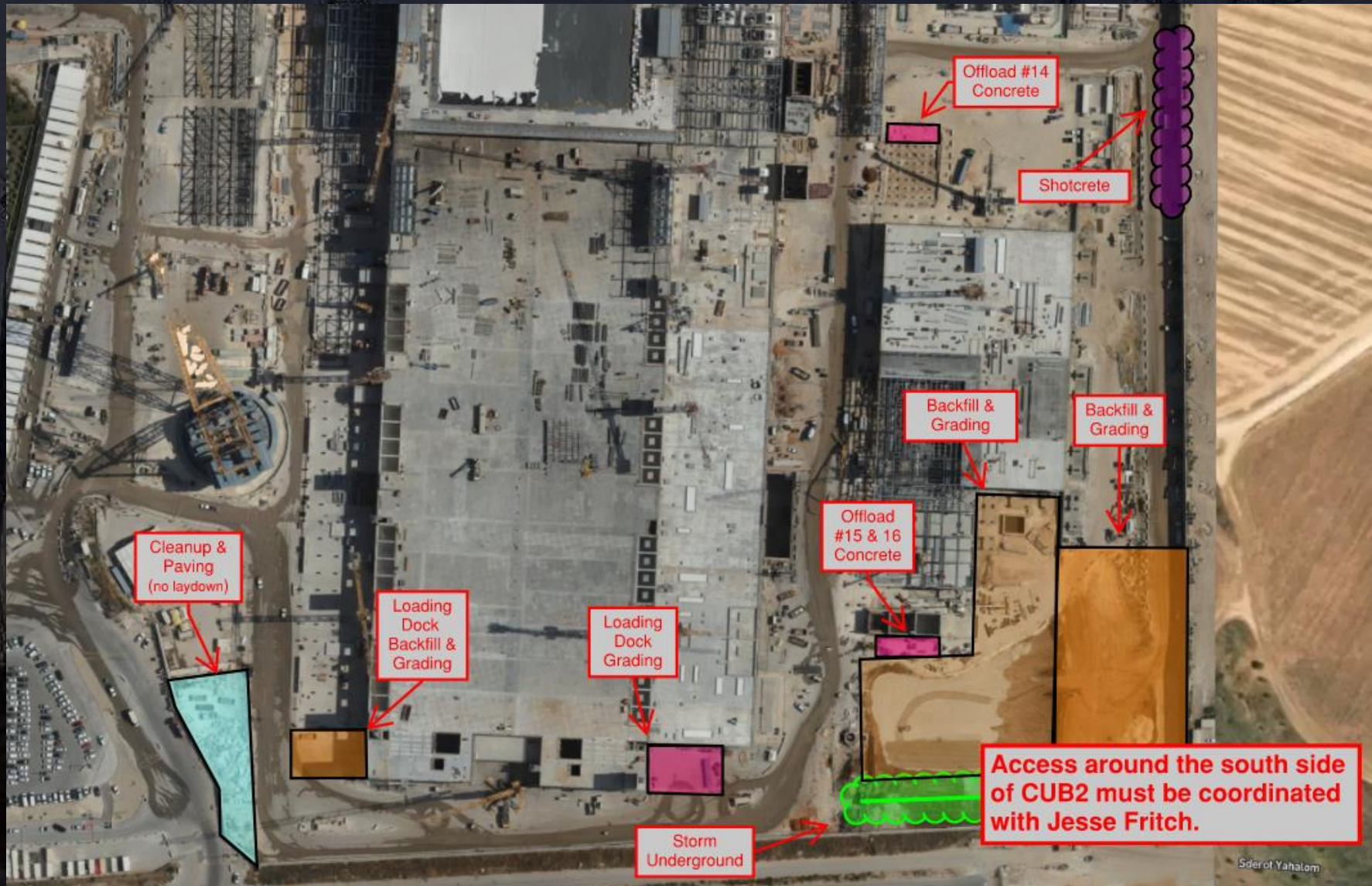
North



Daily Coordination Meeting

Site Logistics

South



Plan your work, Work your plan

- This phrase emphasizes the importance of thorough planning and disciplined execution in achieving successful outcomes.
- Plans are not just for HCC to review, but for your crews to understand and follow.
- If there's a change in circumstances—whether due to unexpected risks, resource availability, or scope alterations—pause work immediately.
- Once adjustments are made, recommit to the revised plan.
- Everyone should understand their roles and responsibilities moving forward.

Daily Coordination Meeting



14:00 Sign In