

# Daily Coordination Meeting



14:00 Sign In

# Daily Coordination Meeting

## General Topics:

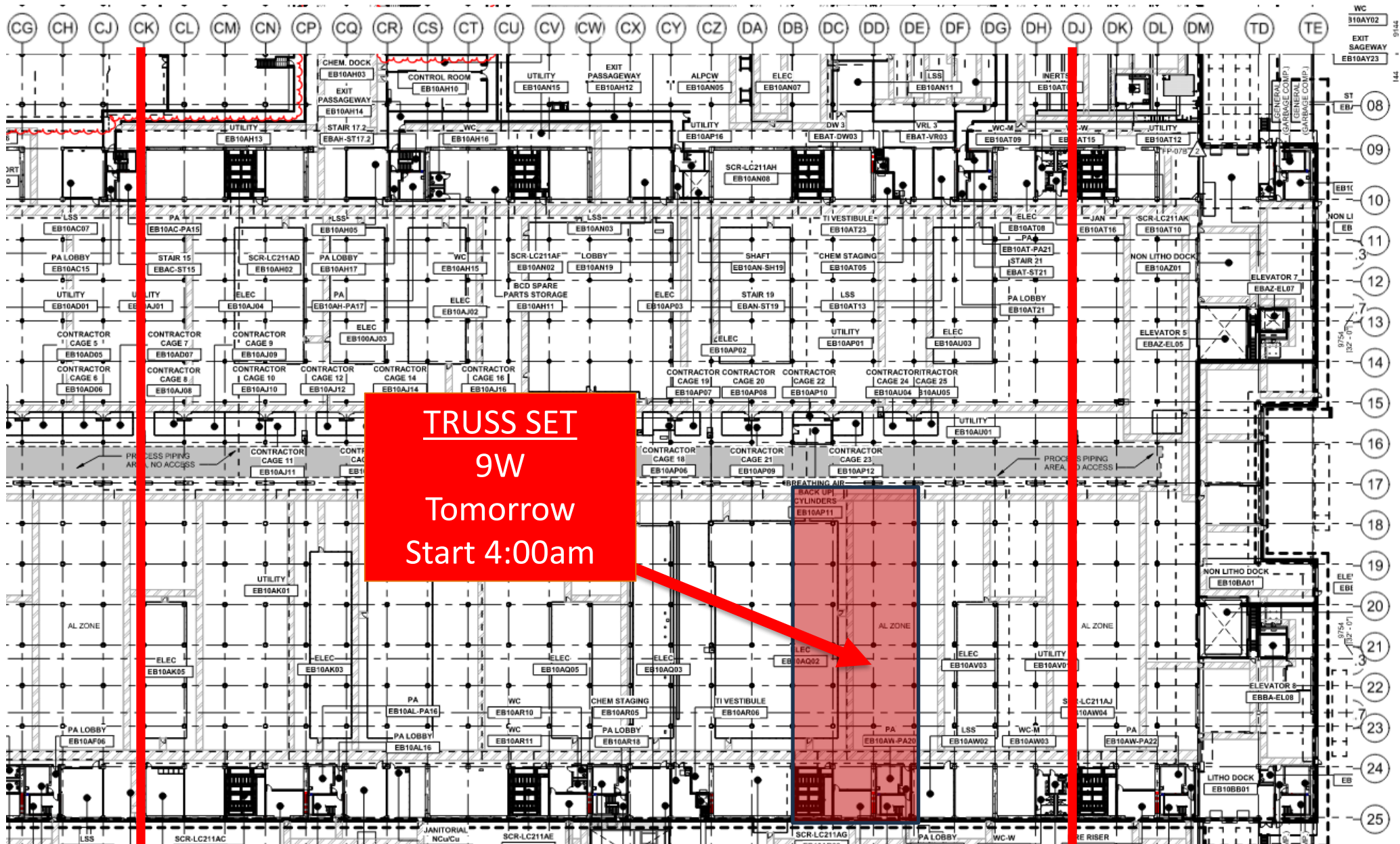
No work this Friday

Job closes on midnight on Thursday



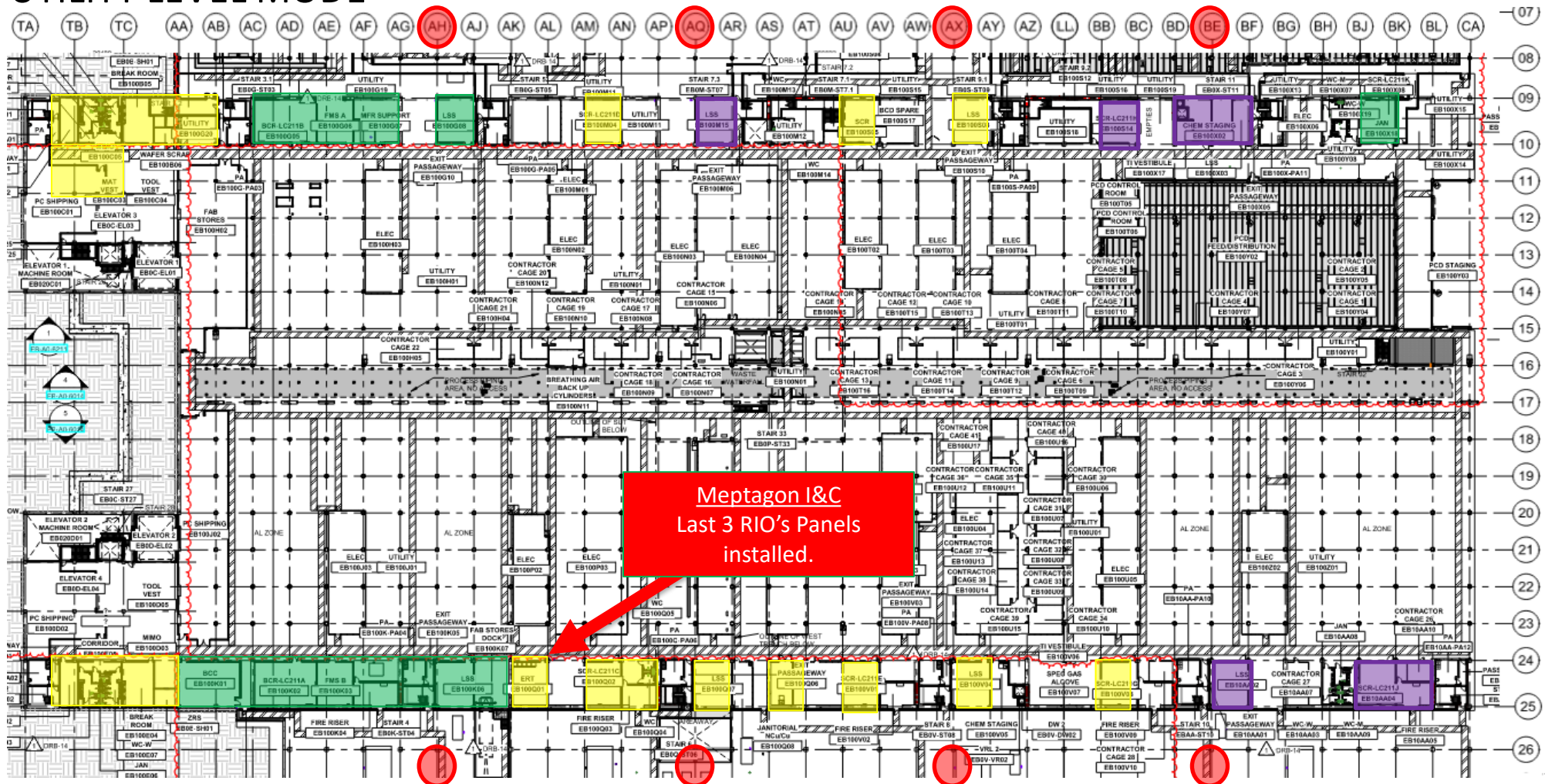


# UTILITY LEVEL TRUSS





## UTILITY LEVEL MOD1



**BELFOR**  
Mold remediation

**ELRAM**  
Drywall install

**MEP+Electrical**  
Ready for re-install

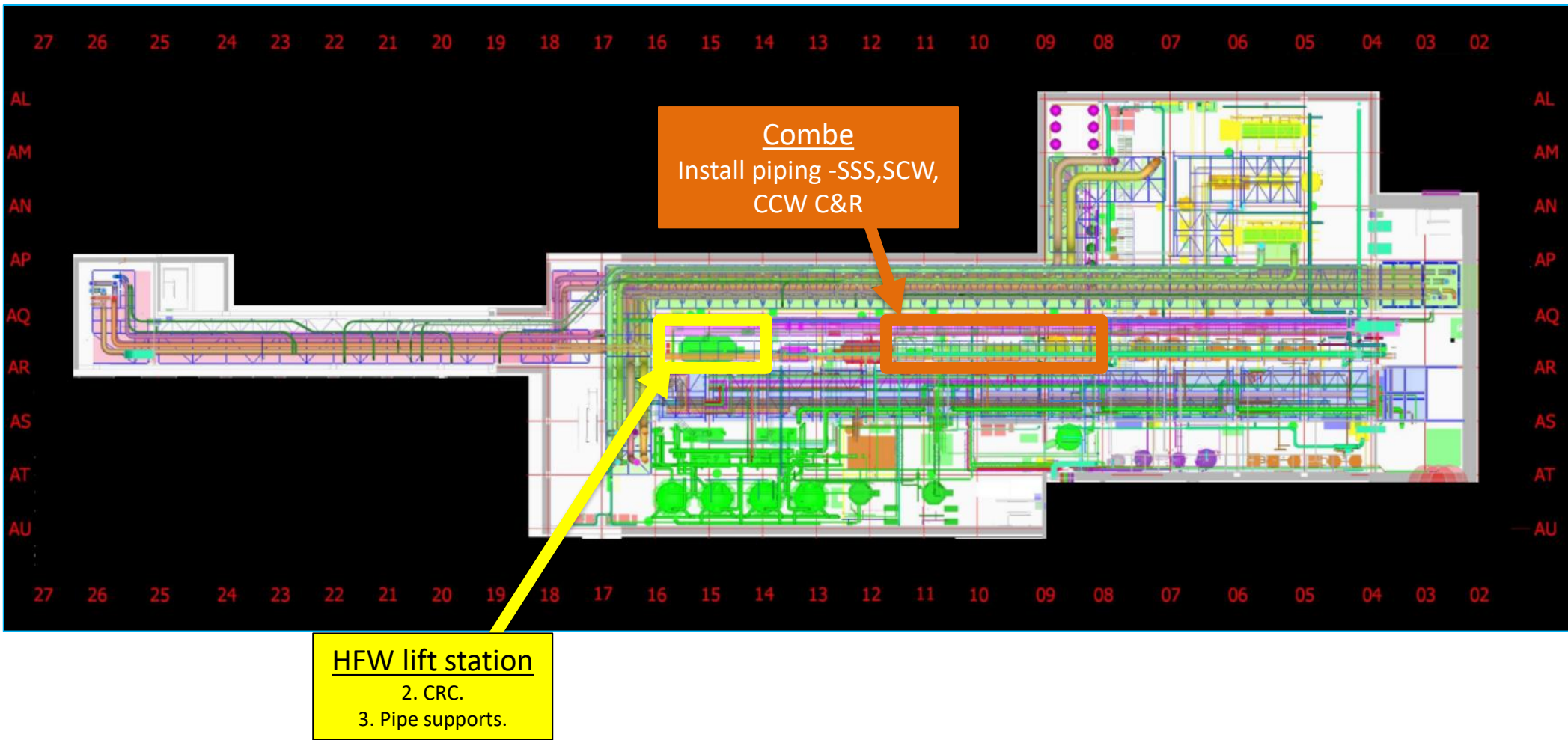




The image is a detailed architectural floor plan of the 9th floor of the Malhimim building. The plan is oriented with a grid of columns labeled CA through TE and rows labeled 07 through 27. The floor is divided into several large sections, each with a diagonal color scheme: red and blue. A red arrow points to a specific area in the center-right of the plan, which is labeled "MALHIMIM 9E Ongoing". This area is highlighted in red and contains a red arrow pointing to a specific room labeled "CONTRACTOR CAGE 11". The plan includes numerous rooms, corridors, and structural elements, such as stairs, elevators, and utility rooms. The overall layout is complex and detailed, showing the internal structure and organization of the 9th floor.

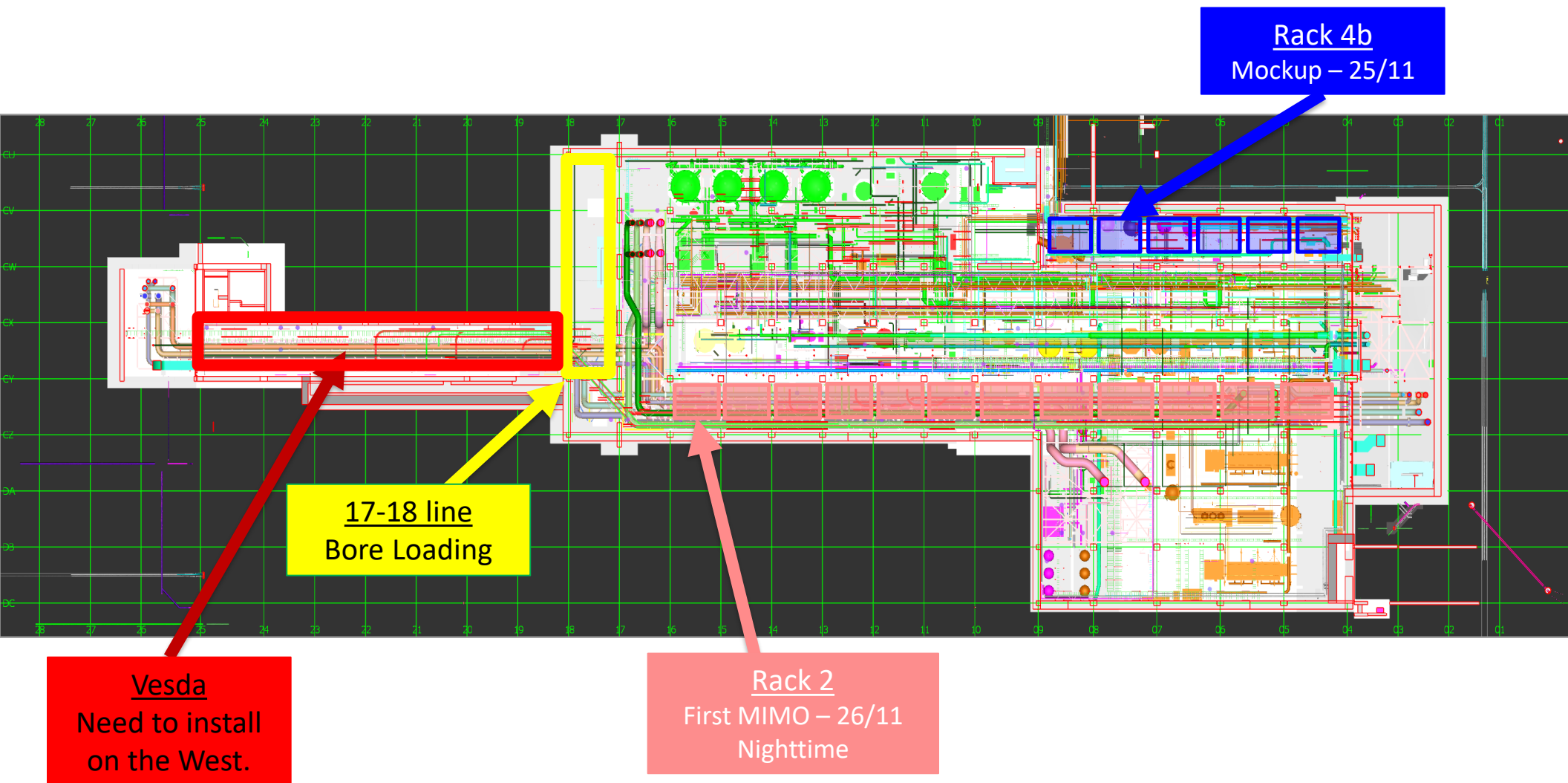


## SUT 38.1 LEVEL

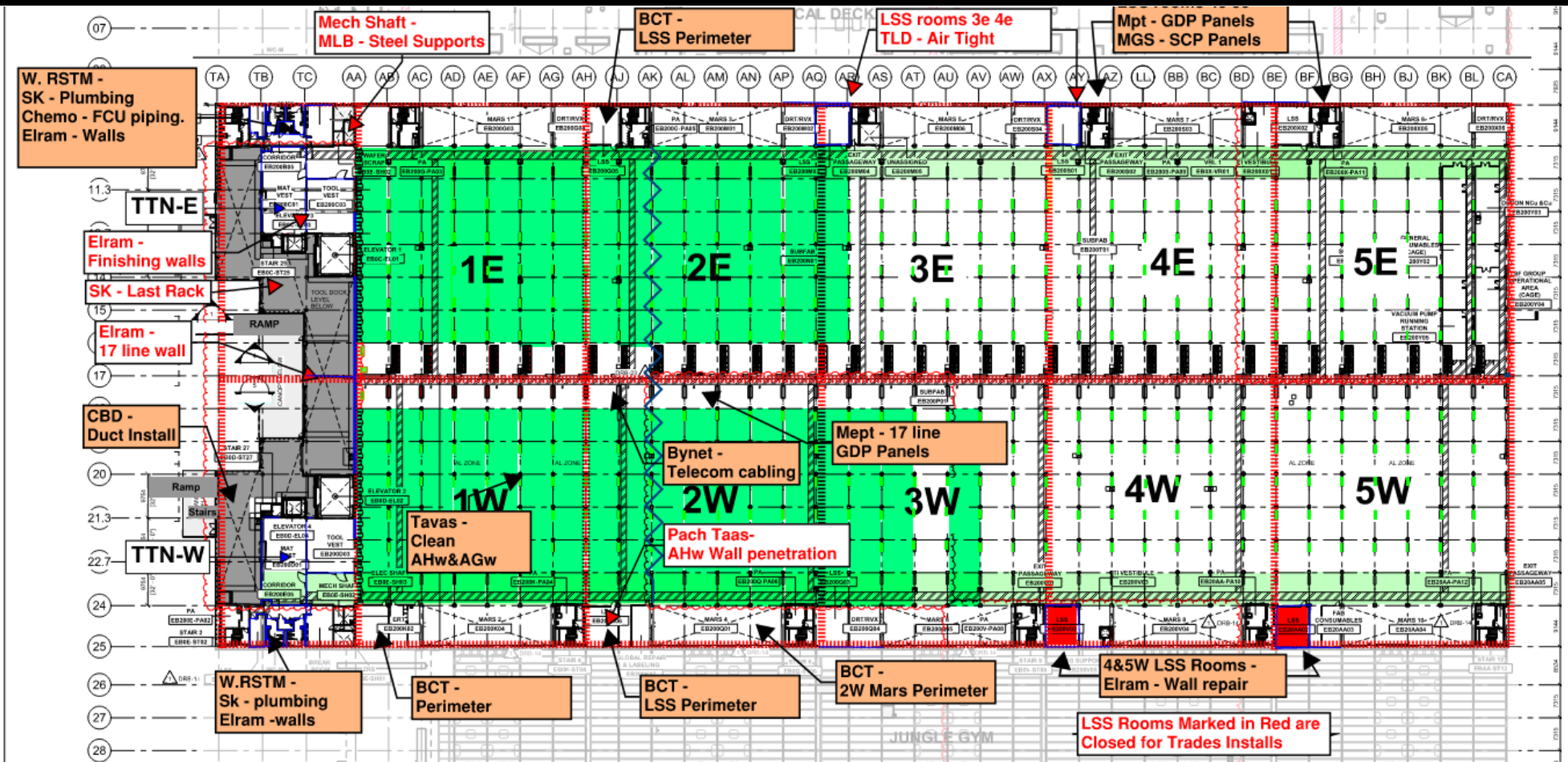




## SUT 38.2 LEVEL

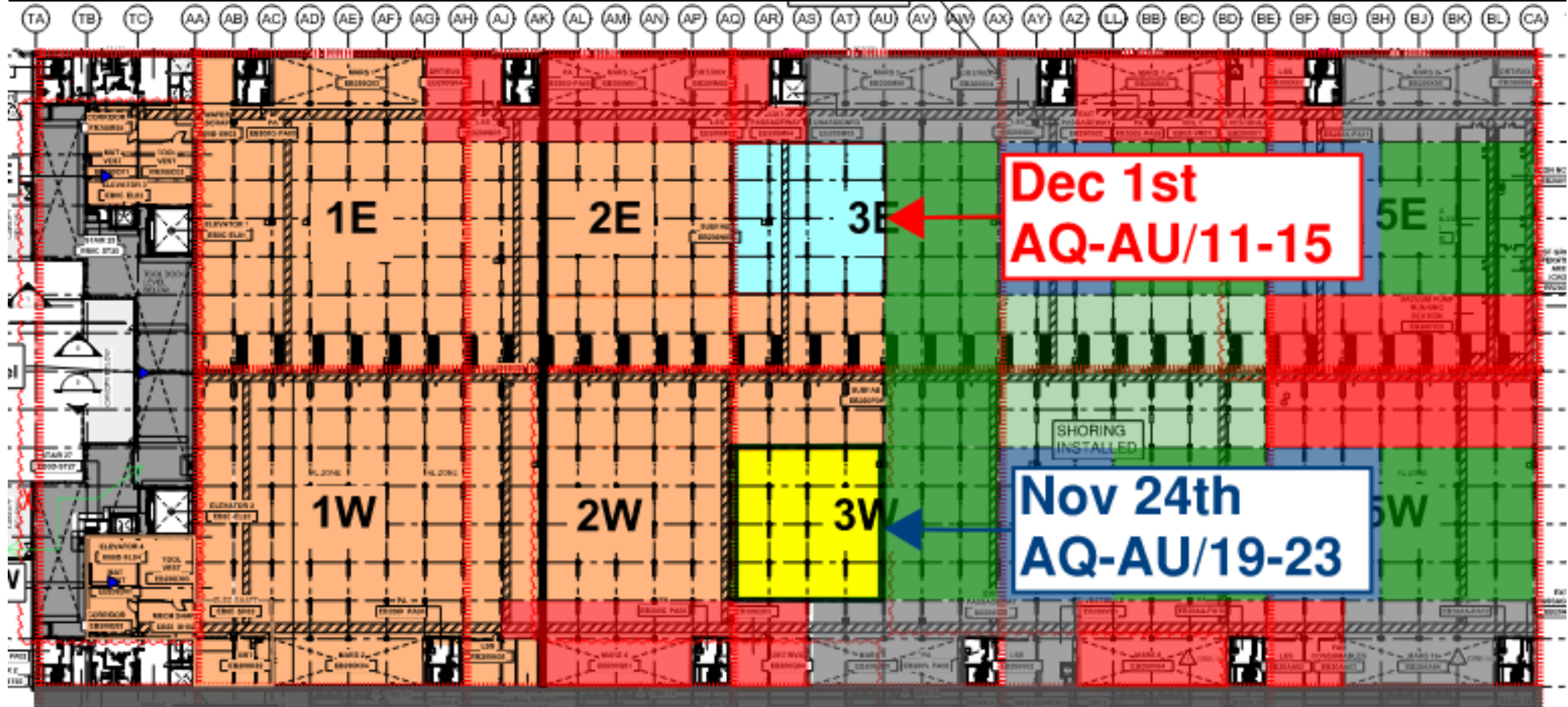


# SUBFAB BUILDOUT MOD 1

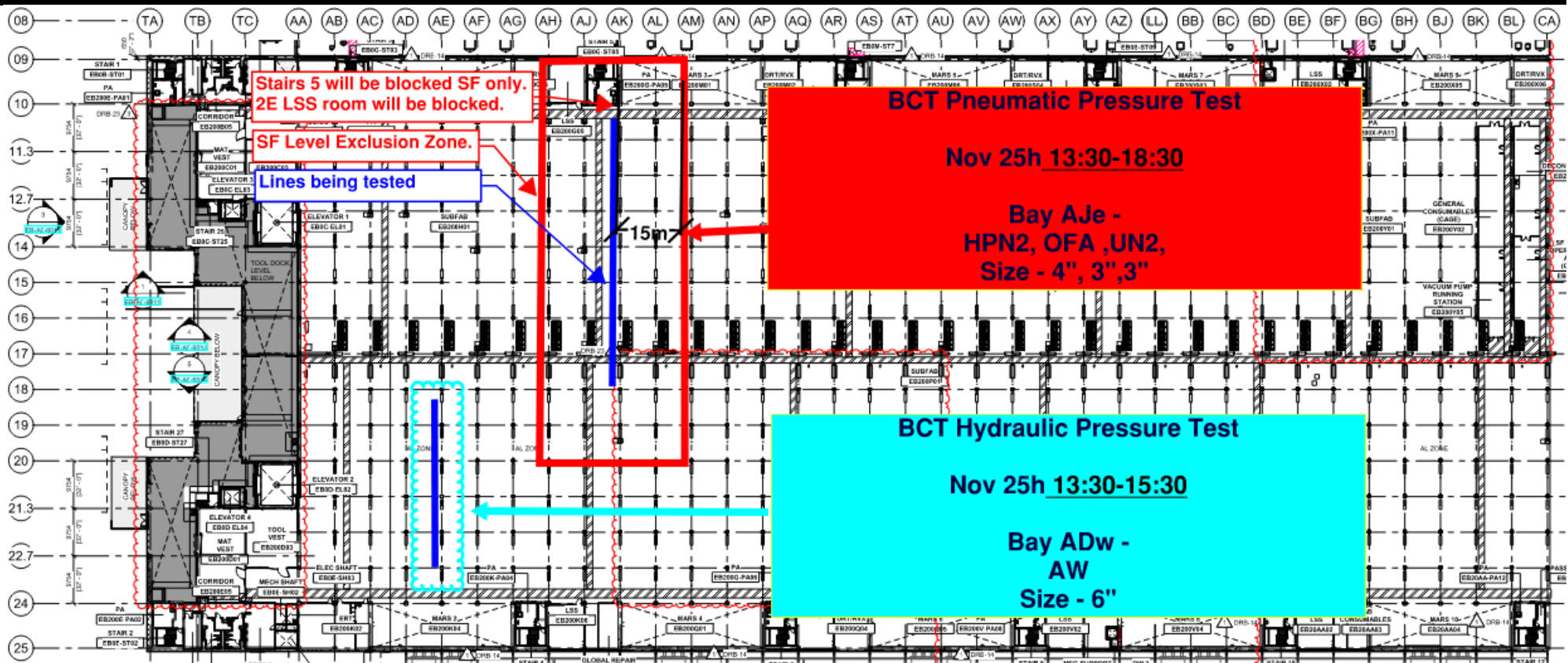




SUBFAB CRC TOPCOAT

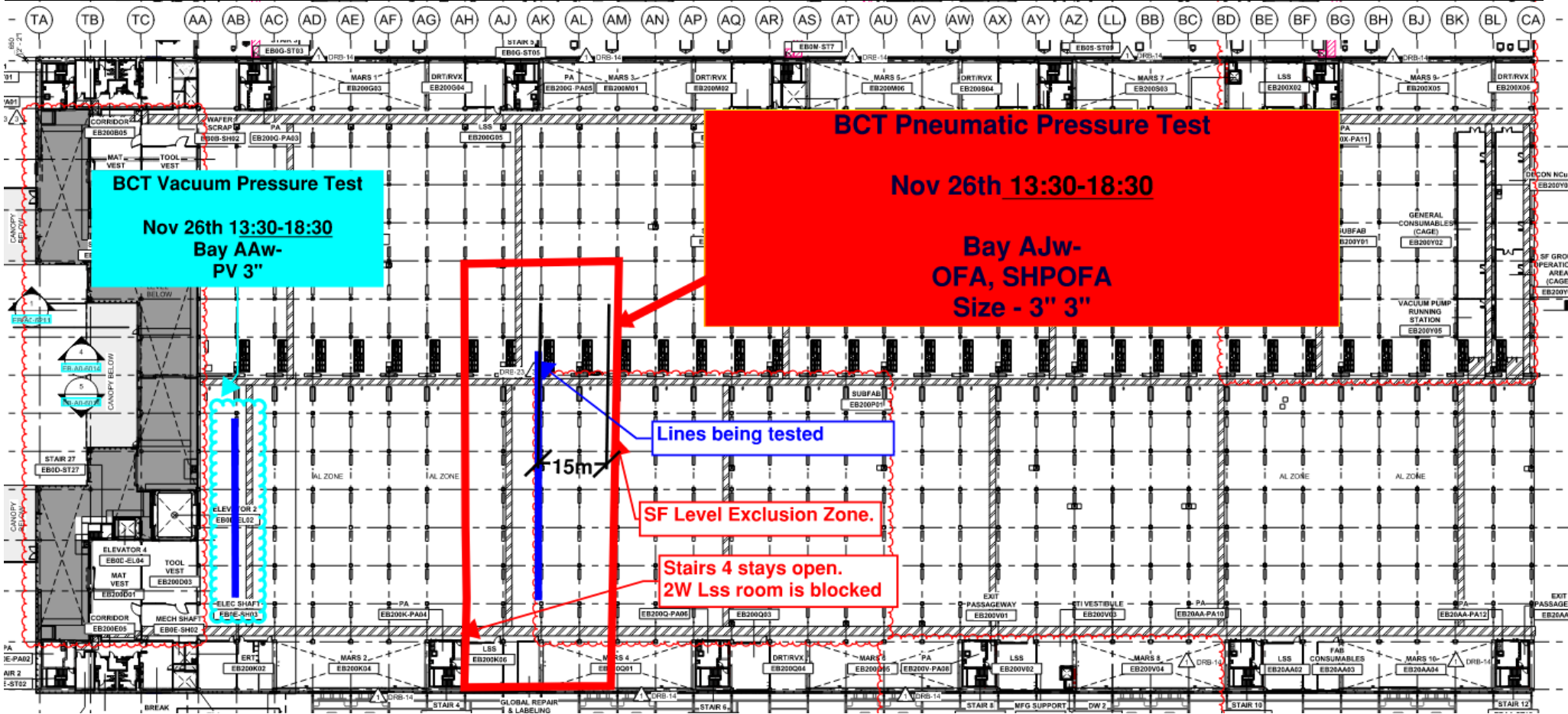


# BCT Pressure Test Today

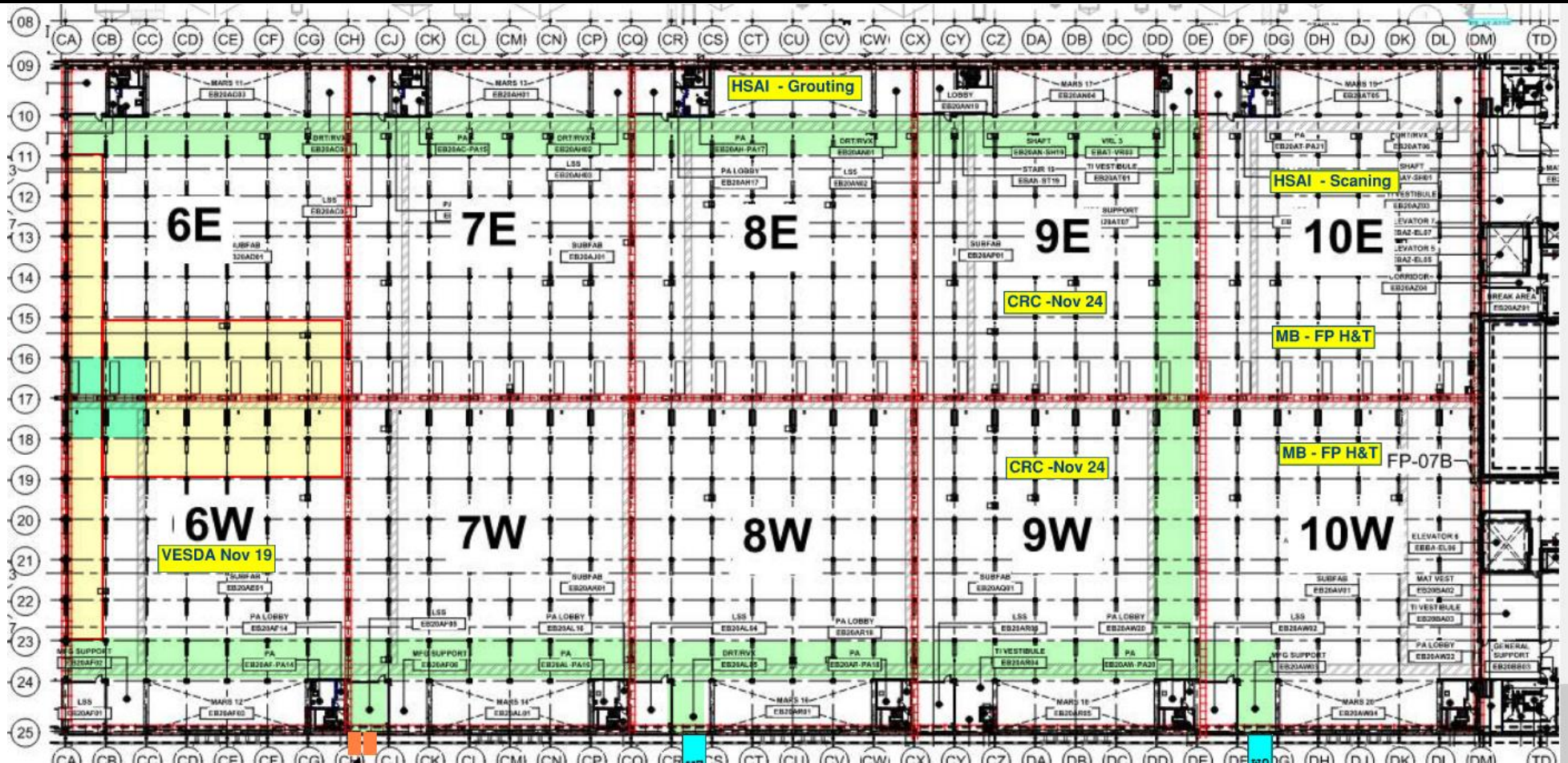




# BCT Pressure Test Tomorrow



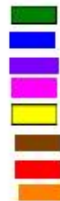
# SUBFAB BUILDOUT MOD 2







## CR level:



Afcon - Cable trays, modules and stickers

MB - Pipes and drops

Elram - 9-10,24-25 columns/shaft walls. 17 line column wraps

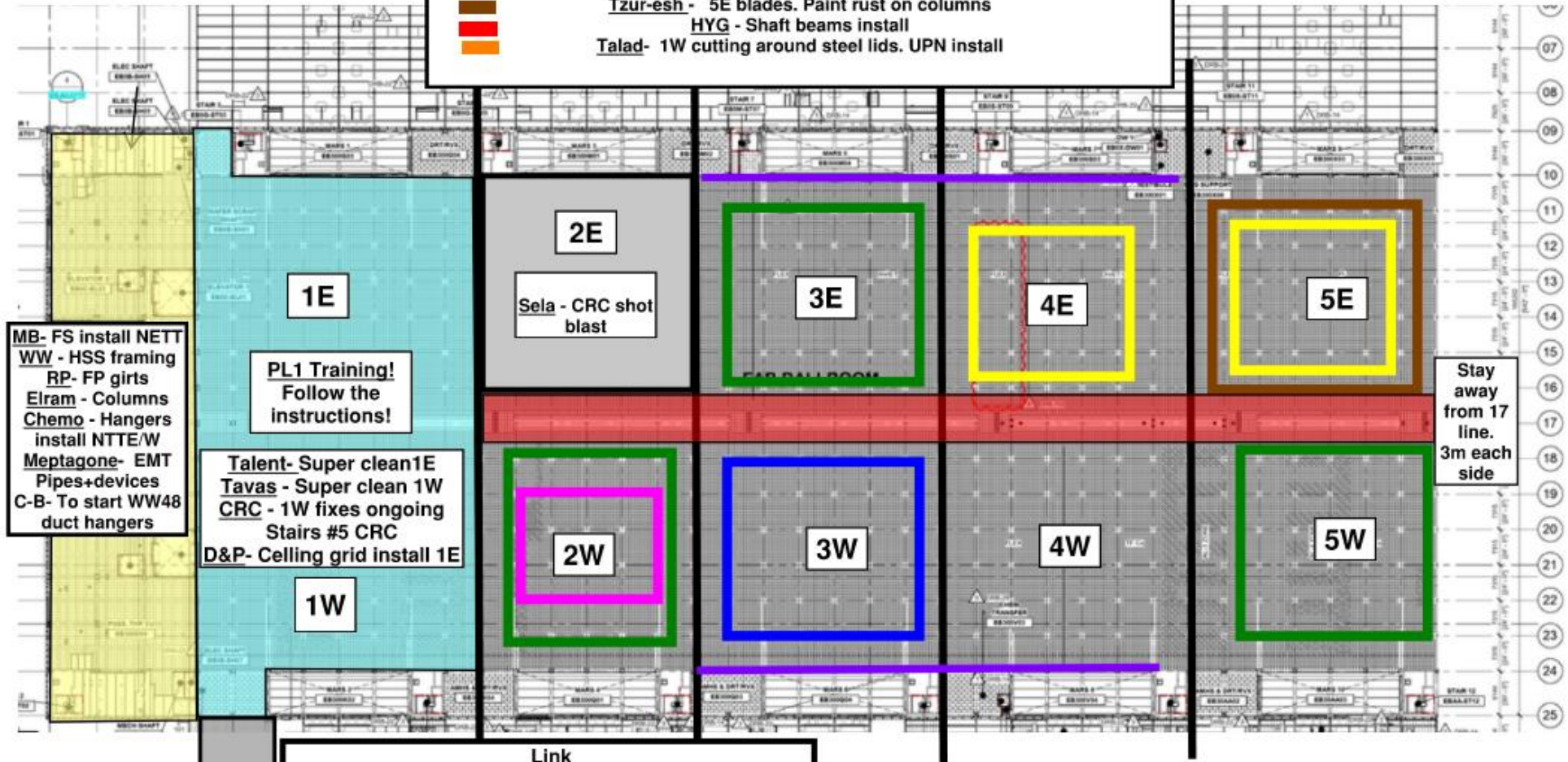
Meptagon - EMT Pipes+devices. TET/NET devices all areas

D&P - Rods install, seismic cables

Tzur-esh - 5E blades. Paint rust on columns

HYG - Shaft beams install

Talad - 1W cutting around steel lids. UPN install



MB- FS install NETT  
WW - HSS framing  
RP- FP girts  
Elram - Columns  
Chemo - Hangers  
install NTTE/W  
Meptagone- EMT  
Pipes+devices  
C-B- To start WW48  
duct hangers

PL1 Training!  
Follow the  
instructions!

Talent- Super clean 1E  
Tavas - Super clean 1W  
CRC - 1W fixes ongoing  
Stairs #5 CRC  
D&P- Ceiling grid install 1E

Stay away  
from 17  
line.  
3m each  
side

## Link

Pach-Taas - exhaust duct install and tie in

SIG - Mobile scaffold install

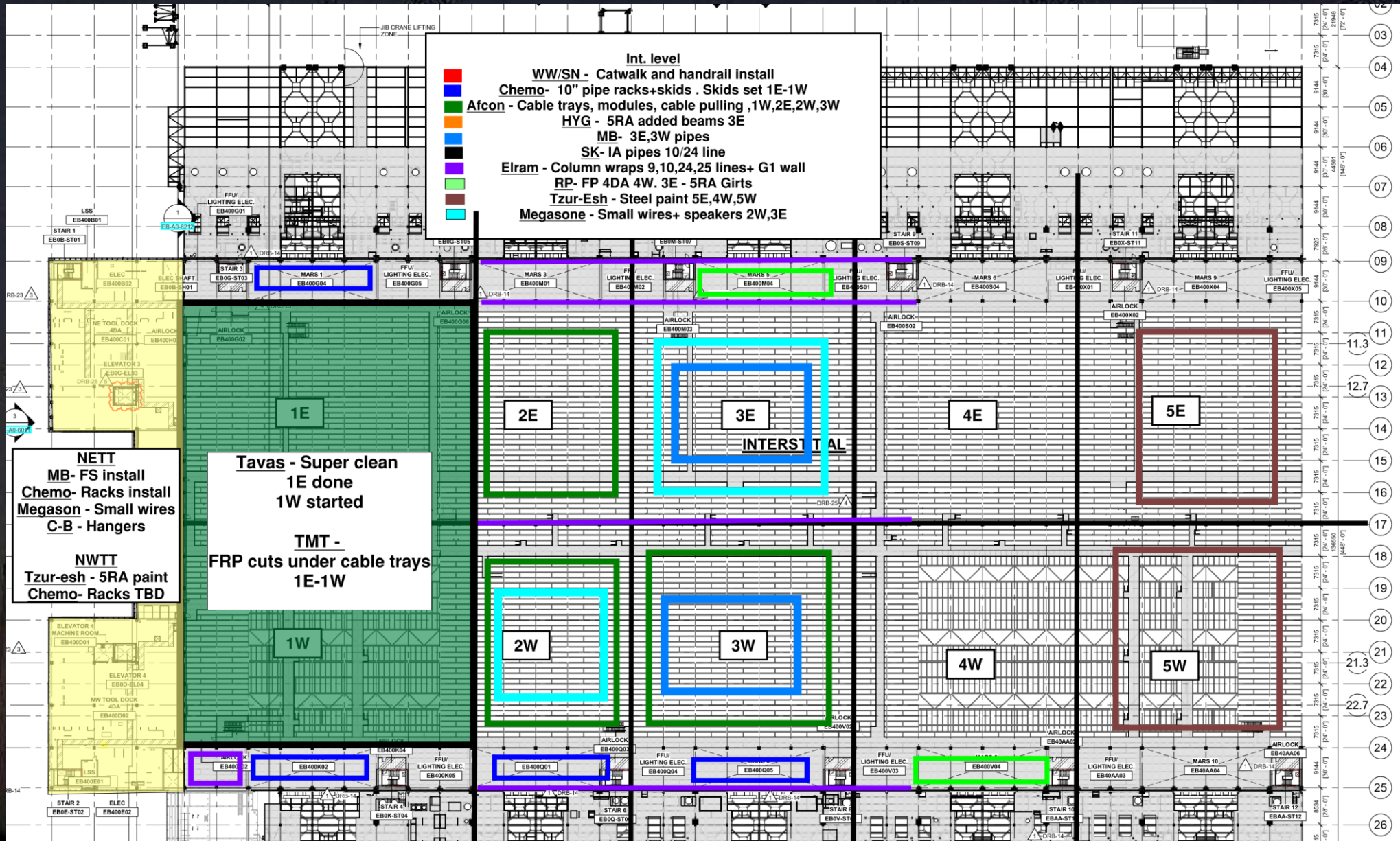
Afcon - Rack install

Newcotech - Temp wall

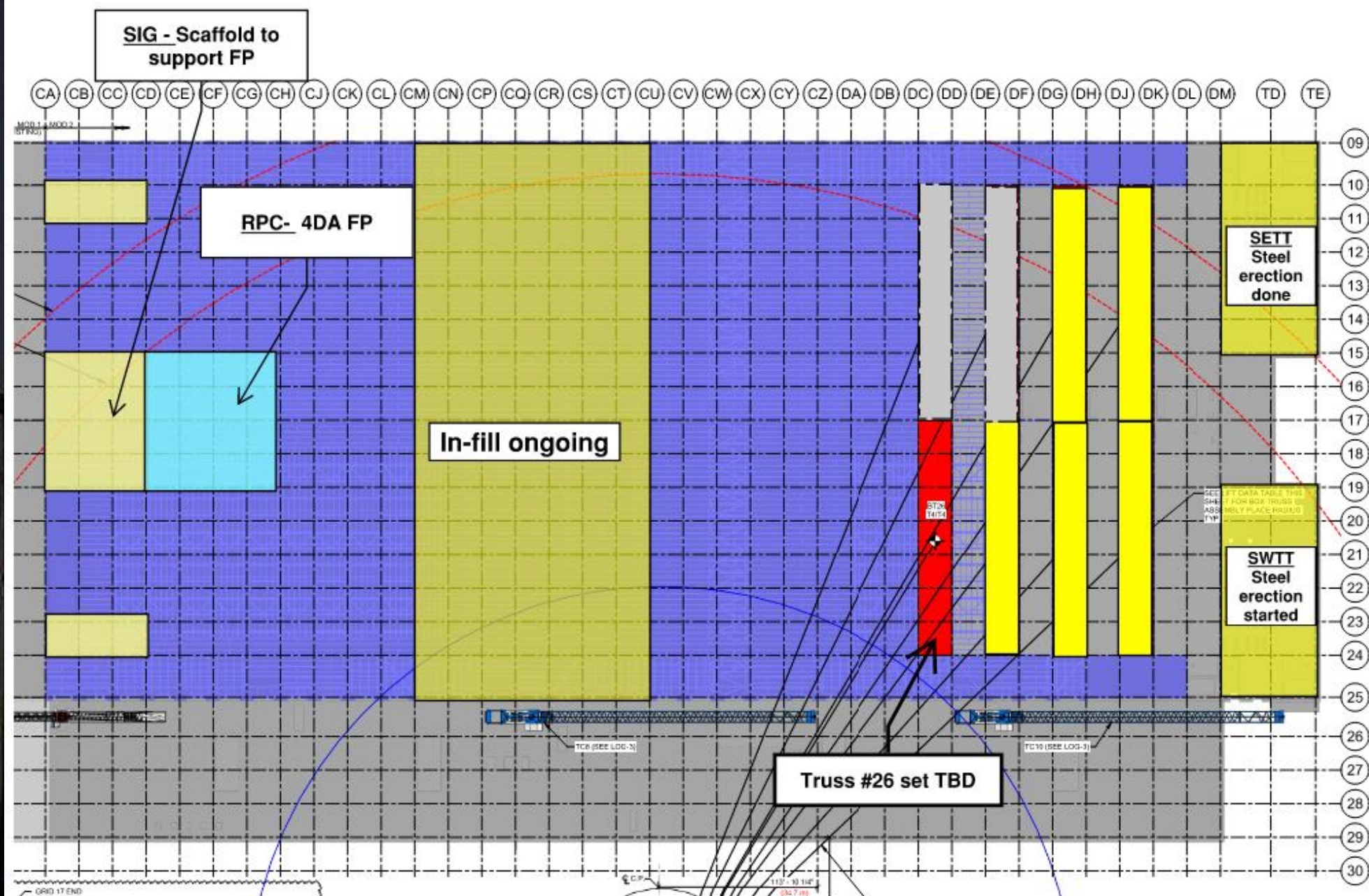
Afcon - Cable tray & racks install

Sela - CRC waiting for QC turnover

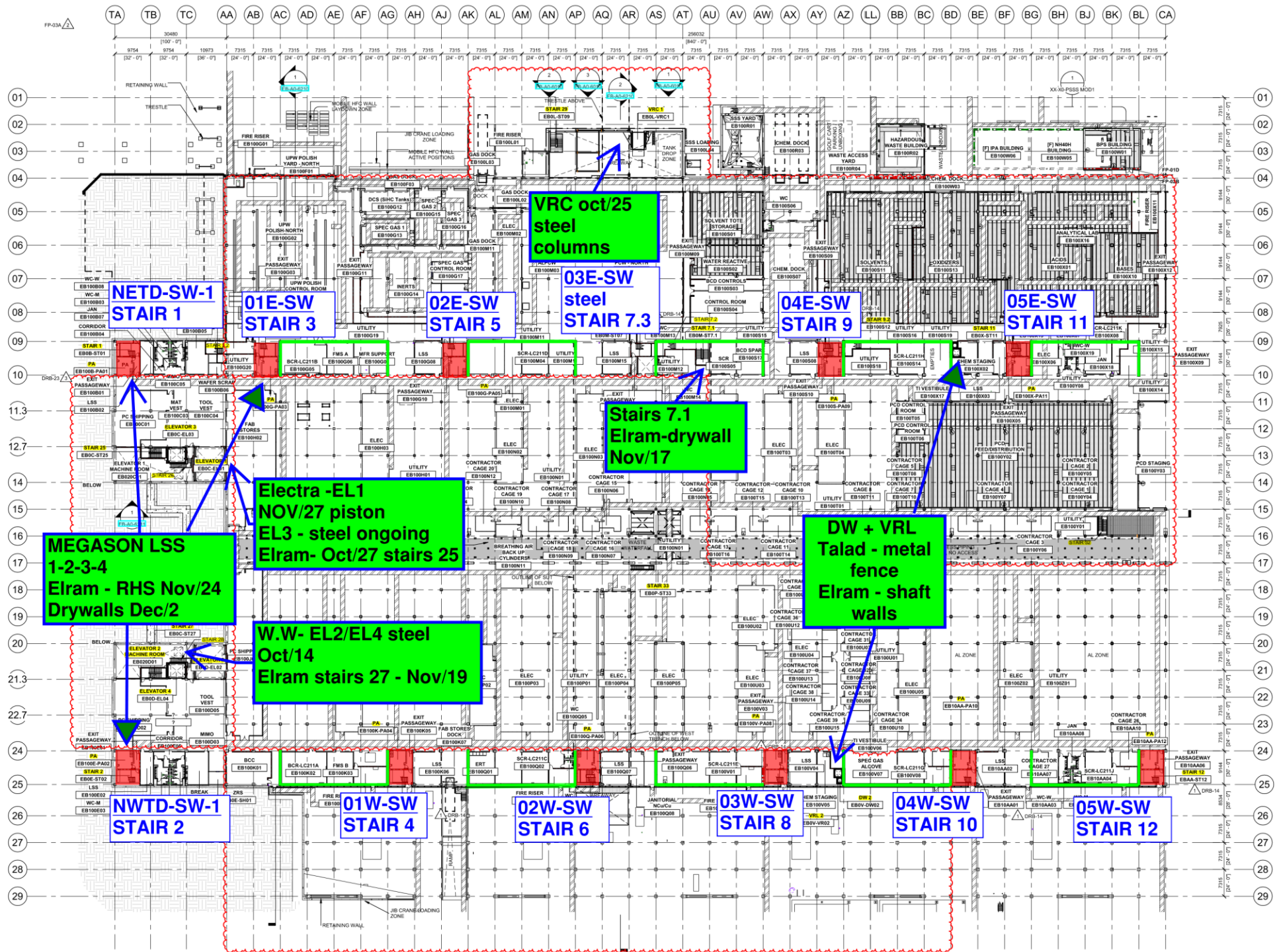
Talad - CRC protection cover













Siding - East FAB - PSSS

BLOWDOWN 30%

[illegible]

EB-08A-SUB-UTILITY - 132,797

Siding - West FAB - JYG

BLOWDOWN 30%

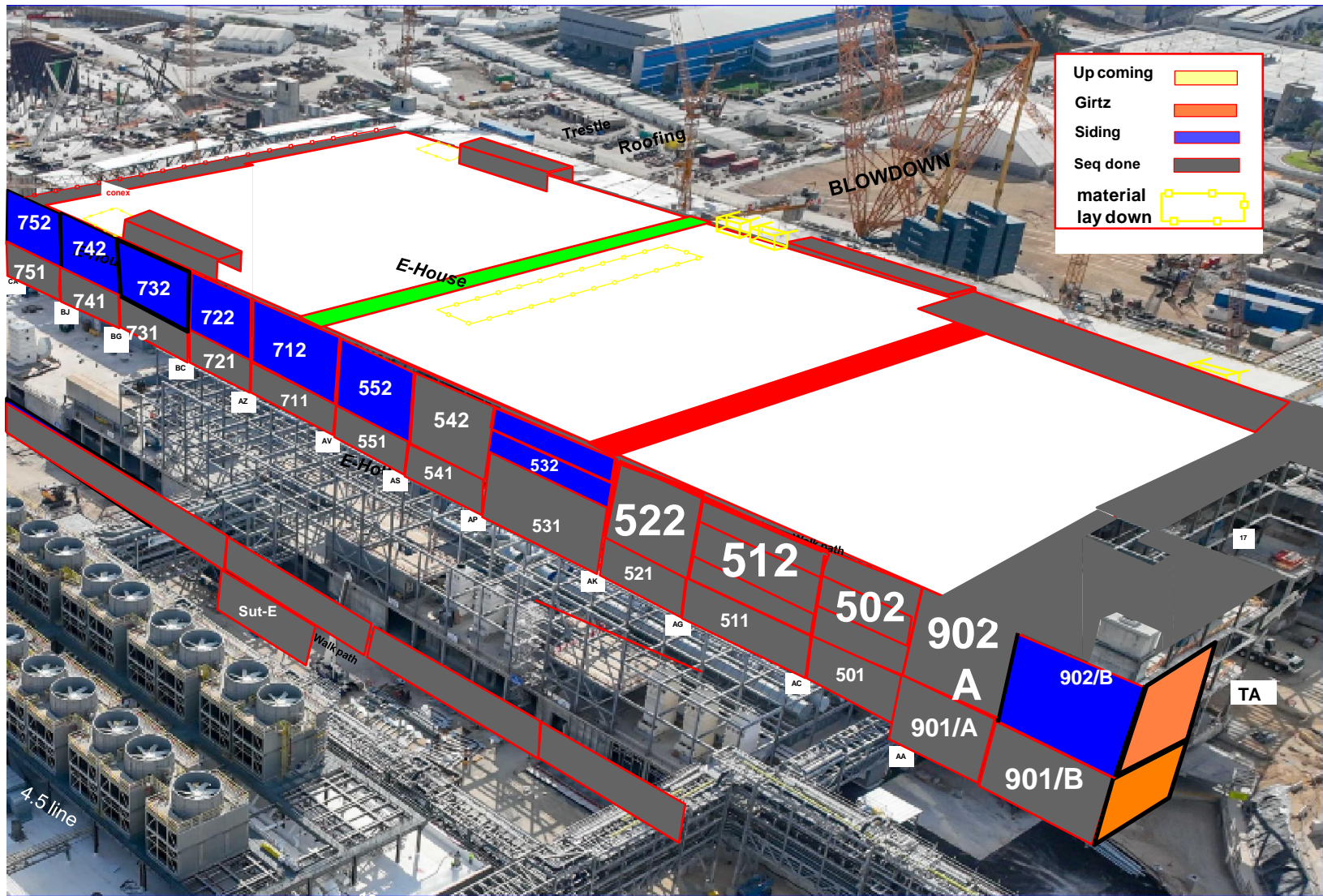
	TA	TB	TC	AA	AB	AC	AD	AE	AF	AG	AH	AI	AJ	AK	AL	AM	AN	AO	AP	AQ	AR	AS	AT	AU	AV	AW	AX	AY	AZ	BA	BB	BC	BD	BE	BF	BG	BH	BI	BJ	BK	BL	CA			
	1001 / 1002			601 / 602		611 / 612				621 / 622				631 / 632				641 / 642				651 / 652				611 / 612				621 / 622				631 / 632				641 / 642				651 / 652			
Total	28	28	28	15	19	31	31	31	31	31	31	31	31	30	31	31	31	31	31	31	31	31	31	31	31	31	31	31	31	31	31	31	31	31	31	31	31	31	31	31	31	31	31		
Installed	28	28	10	15	19	31	31	31	31	31	31	31	31	30	23	22	22	22	31	29	27	24	24	25	29	18	19	18	14	14	14	14	14	14	19	19	14	14	14	14	14	14	14	14	
%	100%	100%	36%	100%	100%	100%	100%	100%	100%	100%	100%	100%	100%	100%	74%	73%	73%	73%	100%	94%	87%	77%	77%	81%	94%	58%	61%	58%	45%	45%	45%	45%	45%	45%	61%	61%	45%	45%	45%	45%	45%	45%	45%	45%	
5RA				0													0	0	0	0	0	0	0	0	0	0	0	0	0	0	0	0	0	0	0	0	0	0	0	0	0	0	0	0	
				0													0	0	0	0	0	0	0	0	0	0	0	0	0	0	0	0	0	0	0	0	0	0	0	0	0	0	0	0	
				0													0	0	0	0	0	0	0	0	0	0	0	0	0	0	0	0	0	0	0	0	0	0	0	0	0	0	0	0	
4DA				0													0	0	0	0	0	0	0	0	0	0	0	0	0	0	0	0	0	0	0	0	0	0	0	0	0	0	0	0	
				0													0	0	0	0	0	0	0	0	0	0	0	0	0	0	0	0	0	0	0	0	0	0	0	0	0	0	0	0	
				0													0	0	0	0	0	0	0	0	0	0	0	0	0	0	0	0	0	0	0	0	0	0	0	0	0	0	0	0	
				0													0	0	0	0	0	0	0	0	0	0	0	0	0	0	0	0	0	0	0	0	0	0	0	0	0	0	0	0	
3FK				0													0	0	0	0	0	0	0	0	0	0	0	0	0	0	0	0	0	0	0	0	0	0	0	0	0	0	0	0	
				0													0	0	0	0	0	0	0	0	0	0	0	0	0	0	0	0	0	0	0	0	0	0	0	0	0	0	0	0	
				0													0	0	0	0	0	0	0	0	0	0	0	0	0	0	0	0	0	0	0	0	0	0	0	0	0	0	0	0	
3FA				0													0	0	0	0	0	0	0	0	0	0	0	0	0	0	0	0	0	0	0	0	0	0	0	0	0	0	0	0	
				0													0	0	0	0	0	0	0	0	0	0	0	0	0	0	0	0	0	0	0	0	0	0	0	0	0	0	0	0	
				0													0	0	0	0	0	0	0	0	0	0	0	0	0	0	0	0	0	0	0	0	0	0	0	0	0	0	0	0	
2SA SF				0													0	0	0	0	0	0	0	0	0	0	0	0	0	0	0	0	0	0	0	0	0	0	0	0	0	0	0	0	
				0													0	0	0	0	0	0	0	0	0	0	0	0	0	0	0	0	0	0	0	0	0	0	0	0	0	0	0	0	
UL				0													0	0	0	0	0	0	0	0	0	0	0	0	0	0	0	0	0	0	0	0	0	0	0	0	0	0	0	0	
				0													0	0	0	0	0	0	0	0	0	0	0	0	0	0	0	0	0	0	0	0	0	0	0	0	0	0	0	0	
				0													0	0	0	0	0	0	0	0	0	0	0	0	0	0	0	0	0	0	0	0	0	0	0	0	0	0	0	0	
				0													0	0	0	0	0	0	0	0	0	0	0	0	0	0	0	0	0	0	0	0	0	0	0	0	0	0	0	0	
				0													0	0	0	0	0	0	0	0	0	0	0	0	0	0	0	0	0	0	0	0	0	0	0	0	0	0	0	0	
				0													0	0	0	0	0	0	0	0	0	0	0	0	0	0	0	0	0	0	0	0	0	0	0	0	0	0	0	0	
				0													0	0	0	0	0	0	0	0	0	0	0	0	0	0	0	0	0	0	0	0	0	0	0	0	0	0	0	0	
				0													0	0	0	0	0	0	0	0	0	0	0	0	0	0	0	0	0	0	0	0	0	0	0	0	0	0	0	0	
				0													0	0	0	0	0	0	0	0	0	0	0	0	0	0	0	0	0	0	0	0	0	0	0	0	0	0	0	0	
				0													0	0	0	0	0	0	0	0	0	0	0	0	0	0	0	0	0	0	0	0	0	0	0	0	0	0	0	0	
				0													0	0	0	0	0	0	0	0	0	0	0	0	0	0	0	0	0	0	0	0	0	0	0	0	0	0	0	0	
				0													0	0	0	0	0	0	0	0	0	0	0	0	0	0	0	0	0	0	0	0	0	0	0	0	0	0	0	0	
				0													0	0	0	0	0	0	0	0	0	0	0	0	0	0	0	0	0	0	0	0	0	0	0	0	0	0	0	0	
				0													0	0	0	0	0	0	0	0	0	0	0	0	0	0	0	0	0	0	0	0	0	0	0	0	0	0	0	0	
				0													0	0	0	0	0	0	0	0	0	0	0	0	0	0	0	0	0	0	0	0	0	0	0	0	0	0	0	0	
				0													0	0	0	0	0	0	0	0	0	0	0	0	0	0	0	0	0	0	0	0	0	0	0	0	0	0	0	0	
				0													0	0	0	0	0	0	0	0	0	0	0	0	0	0	0	0	0	0	0	0	0	0	0	0	0	0	0	0	
				0													0	0	0	0	0	0	0	0	0	0	0	0	0	0	0	0	0	0	0	0	0	0	0	0	0	0	0	0	
				0													0	0	0	0	0	0	0	0	0	0	0	0	0	0	0	0	0	0	0	0	0	0	0	0	0	0	0	0	
				0													0	0	0	0	0	0	0	0	0	0	0	0	0	0	0	0	0	0	0	0	0	0	0	0	0	0	0	0	
				0													0	0	0	0	0	0	0	0	0	0	0	0	0	0	0	0	0	0	0	0	0	0	0	0	0	0	0	0	
				0													0	0	0	0	0	0	0	0	0	0	0	0	0	0	0	0	0	0	0	0	0	0	0	0	0	0	0	0	
				0													0	0	0	0	0	0	0	0	0	0	0	0	0	0	0	0	0	0	0	0	0	0	0	0	0	0	0	0	
				0													0	0	0	0	0	0	0	0	0	0	0	0	0	0	0	0	0	0	0	0	0	0	0	0	0	0	0	0	
				0													0	0	0	0	0	0	0	0	0	0	0	0	0	0	0	0	0	0	0	0	0	0	0	0	0	0	0	0	
				0													0	0	0	0	0	0	0	0	0	0	0	0	0	0	0	0	0	0	0	0	0	0	0	0	0	0	0	0	
				0													0	0	0	0	0	0	0	0	0	0	0	0	0	0	0	0	0	0	0	0	0	0	0	0	0	0	0	0	
				0													0	0	0	0	0	0	0	0	0	0	0	0	0	0	0	0	0	0	0	0	0	0	0	0	0	0	0	0	
				0													0	0	0	0	0	0	0	0	0	0	0	0	0	0	0	0	0	0	0	0	0	0	0	0	0	0	0	0	
				0													0	0	0	0	0	0	0	0	0	0	0	0	0	0	0	0	0	0	0	0	0	0	0	0	0	0	0	0	
				0																																									

Link

SUT - West			
AP	5	AO	5
5	5	5	5
100%	100%	100%	100%
1	1	1	1
2	2	2	2
3	3	3	3
4	4	4	4
5	5	5	5

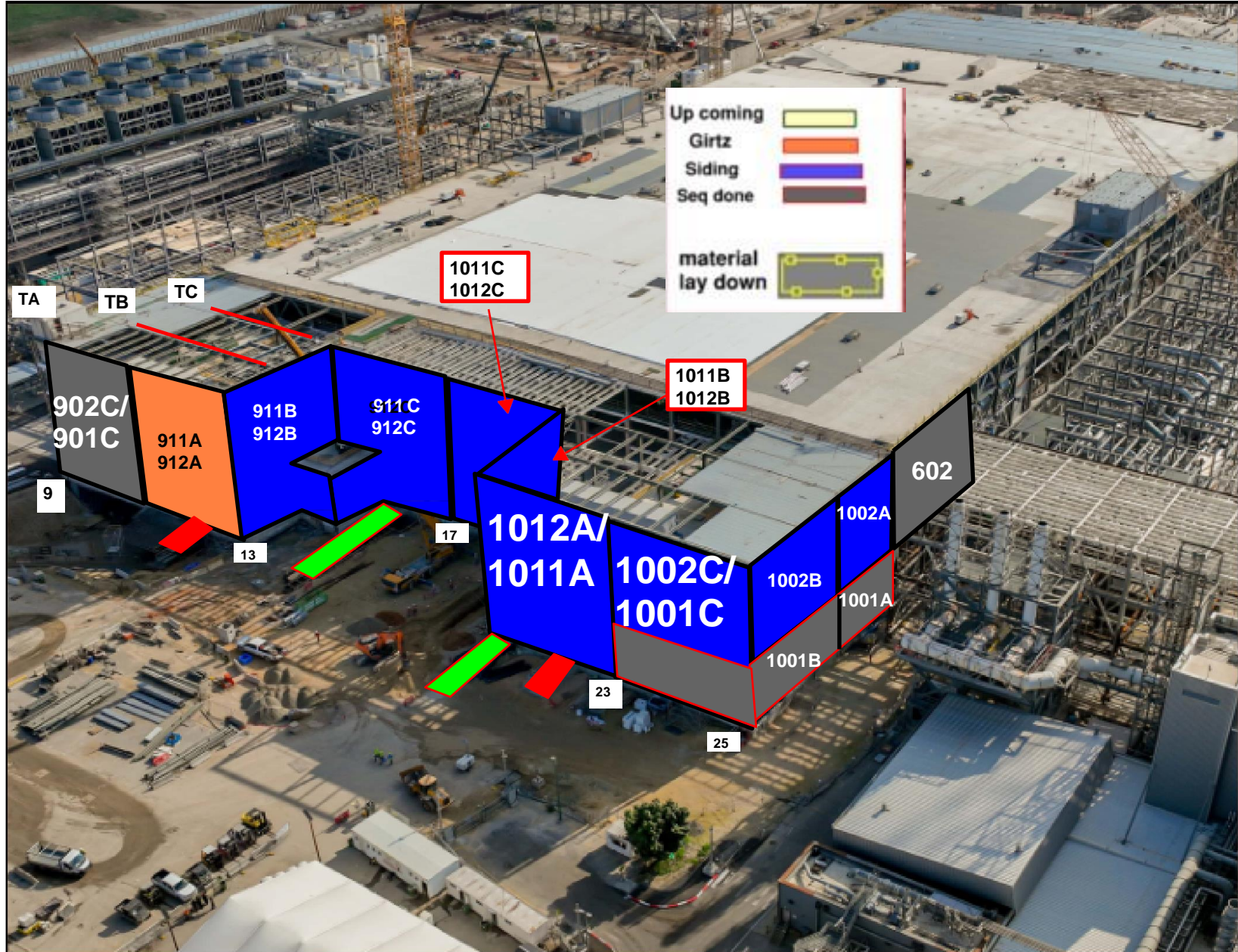
EB-88A-SUB-UTILITY - 132,747



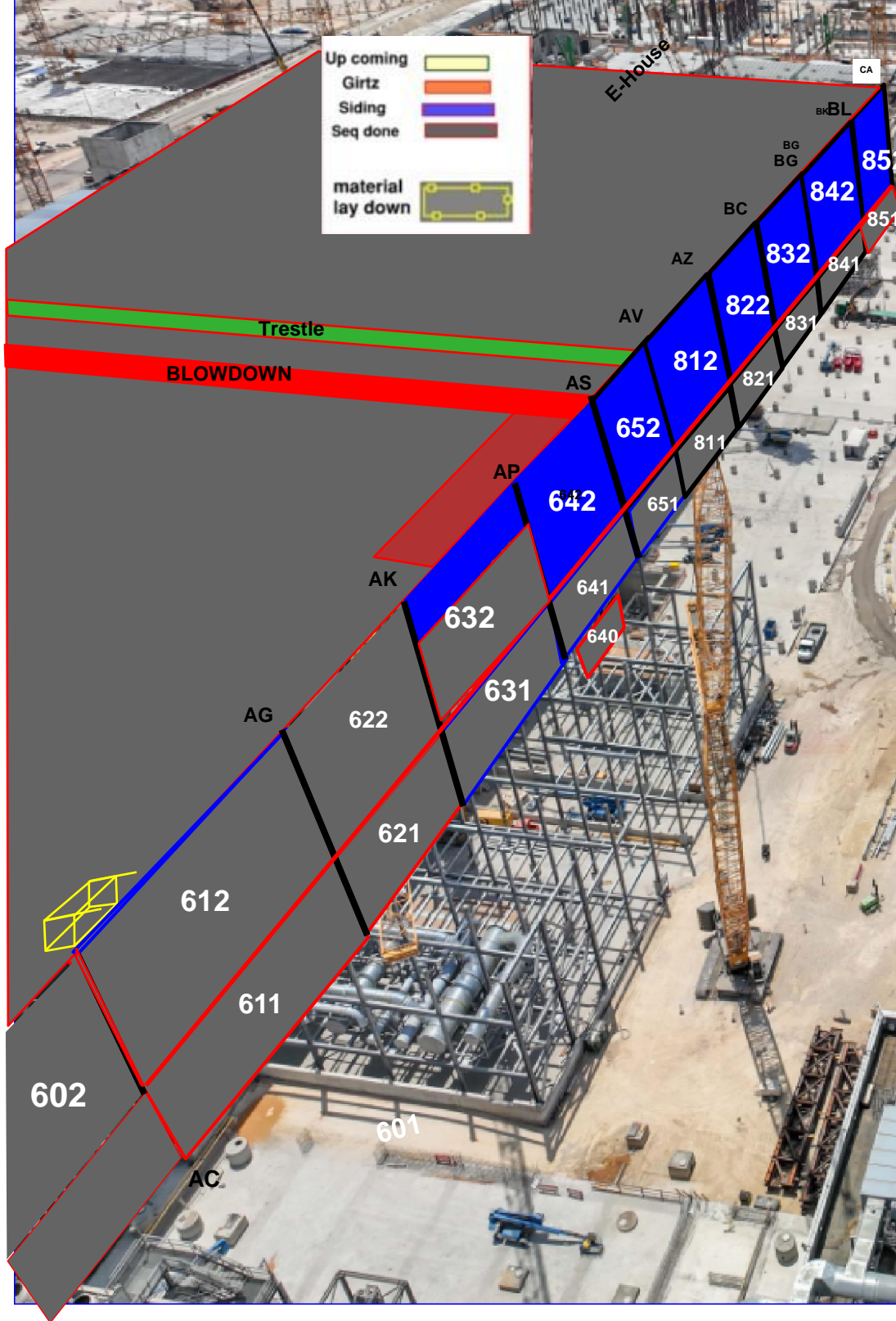


Walk path





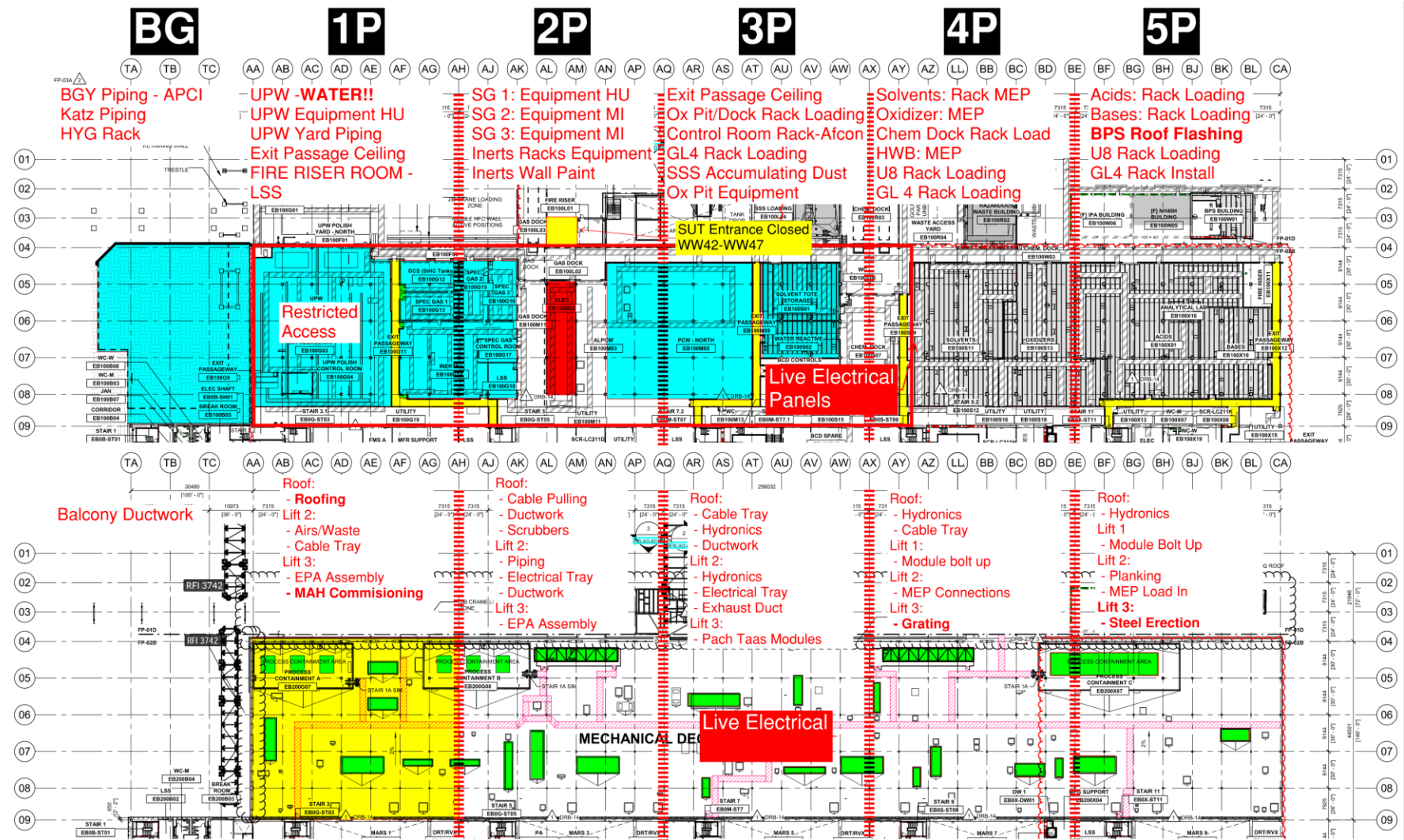




# PSSS.1

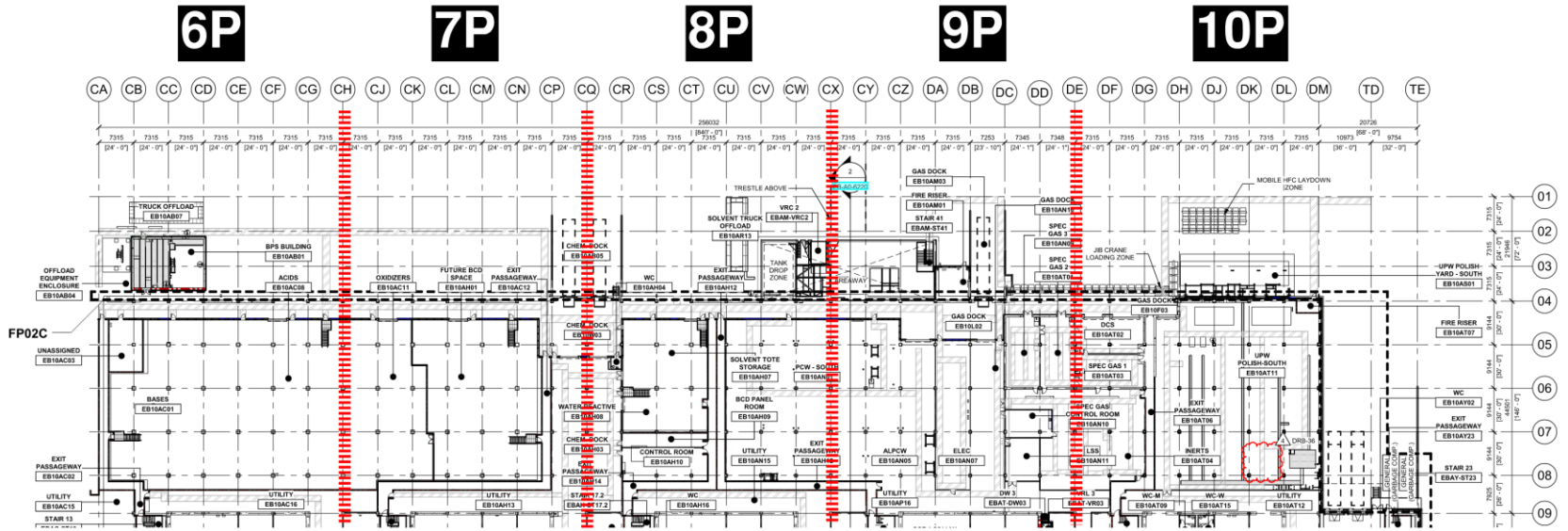
## Utility Level 1YA

## PSSS Roof 2SA

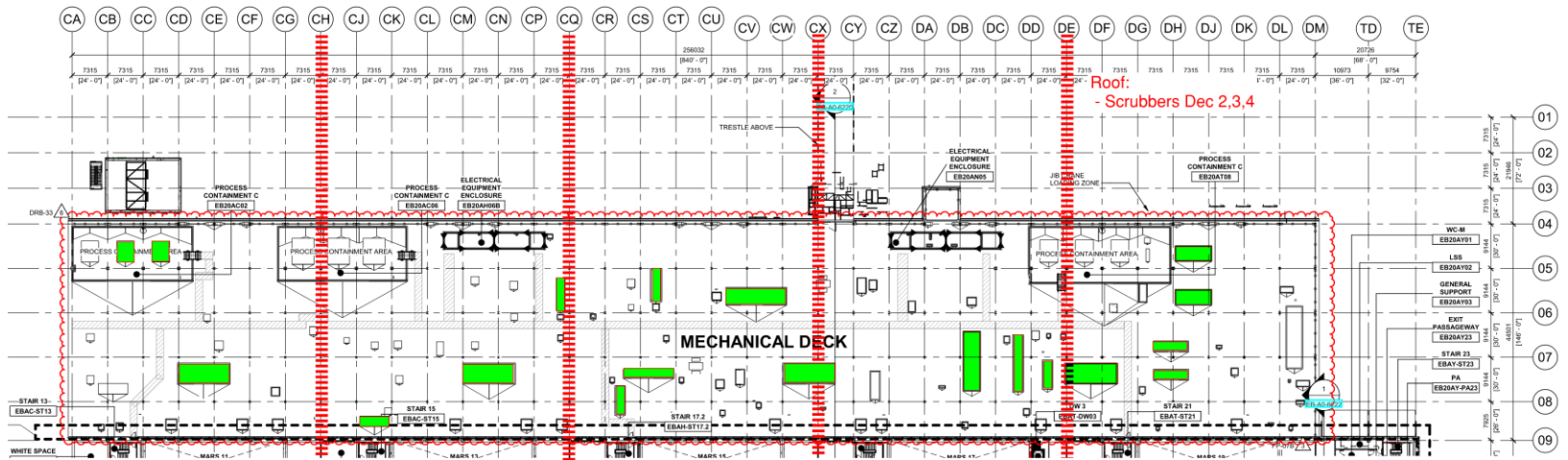


# PSSS.2

## Utility Level 1YA

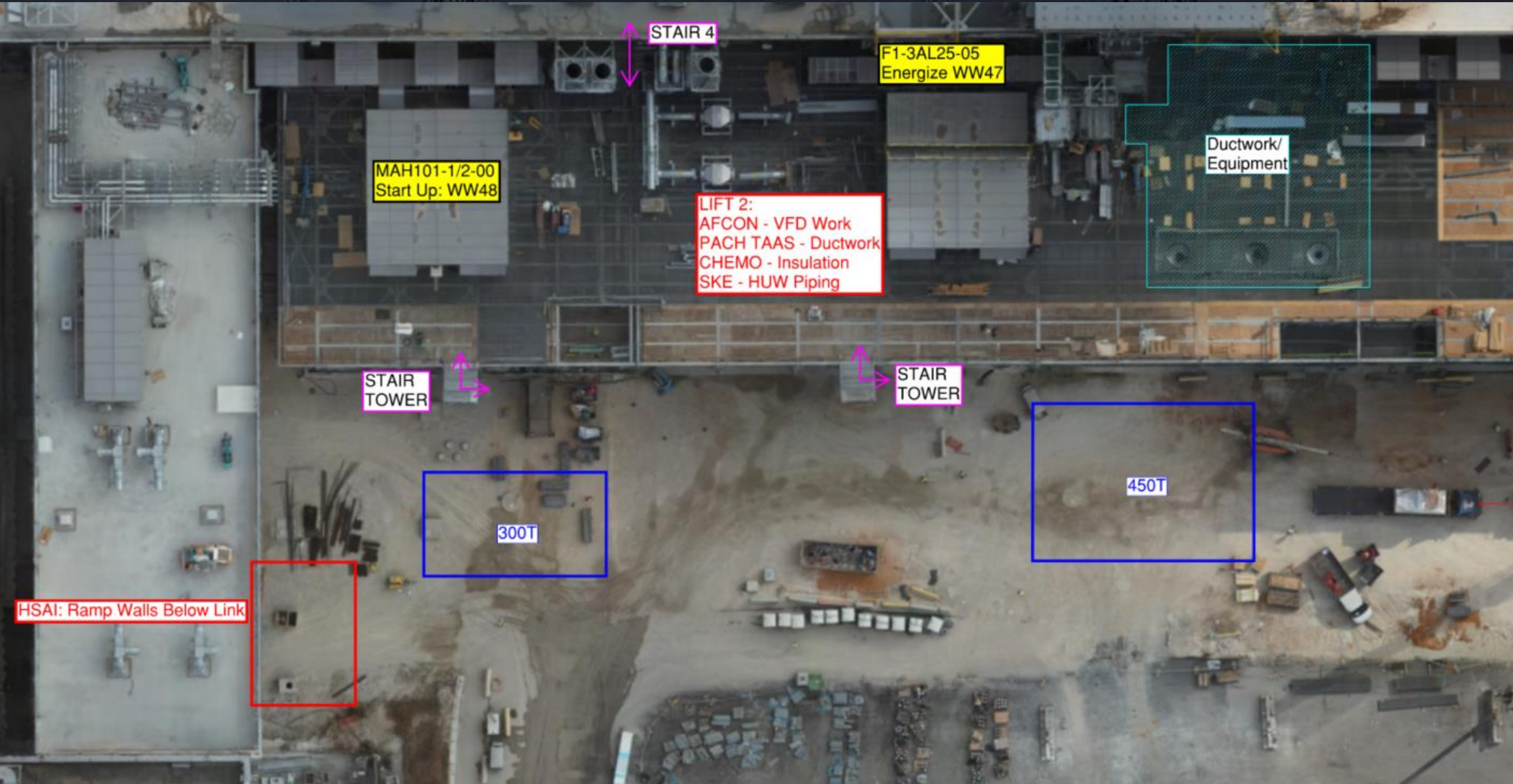


# PSSS Roof 2SA



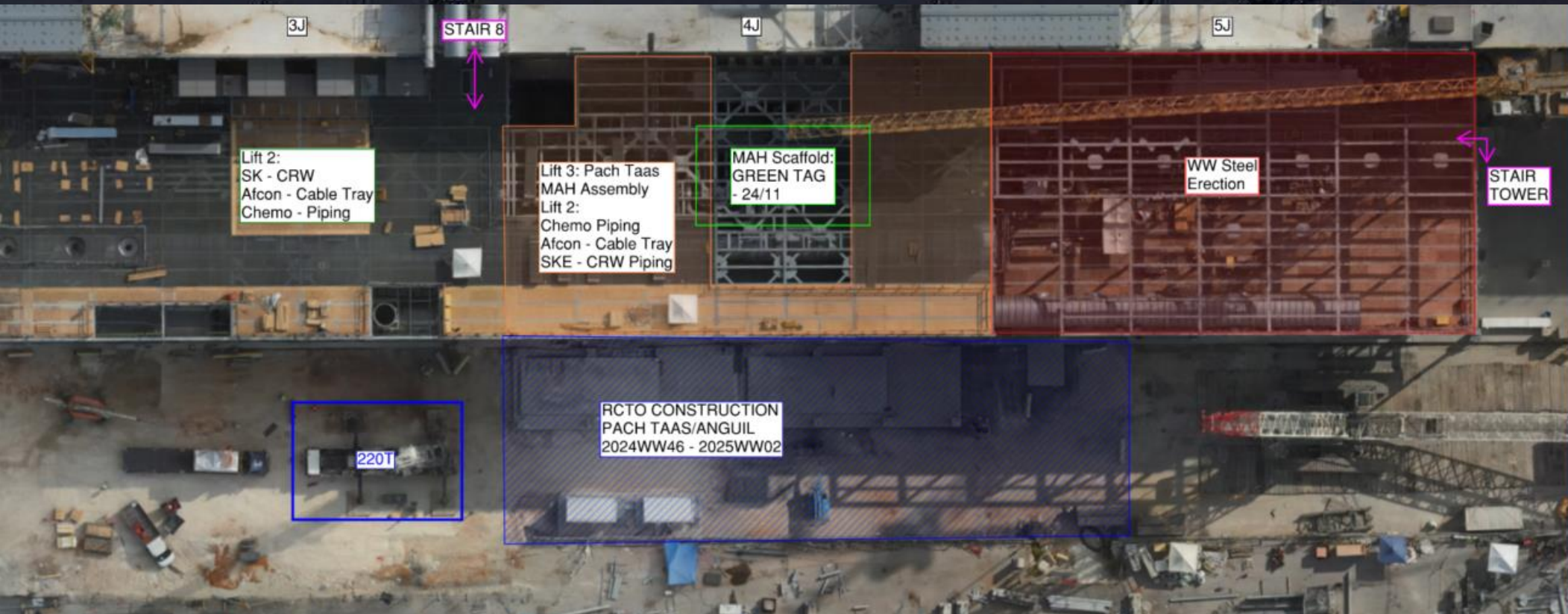


# WJG 01J, 02J LIFT 2 & 3



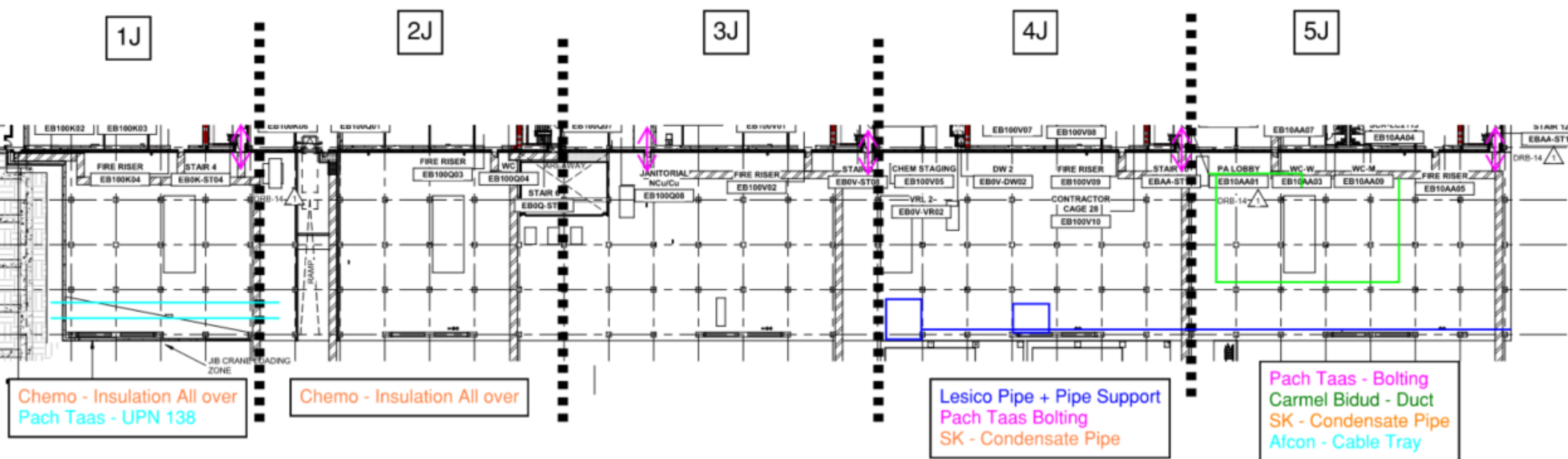


# WJG 03J, 04J, 05J LIFT 2 & 3





# WJG UTILITY LEVEL BUILD OUT

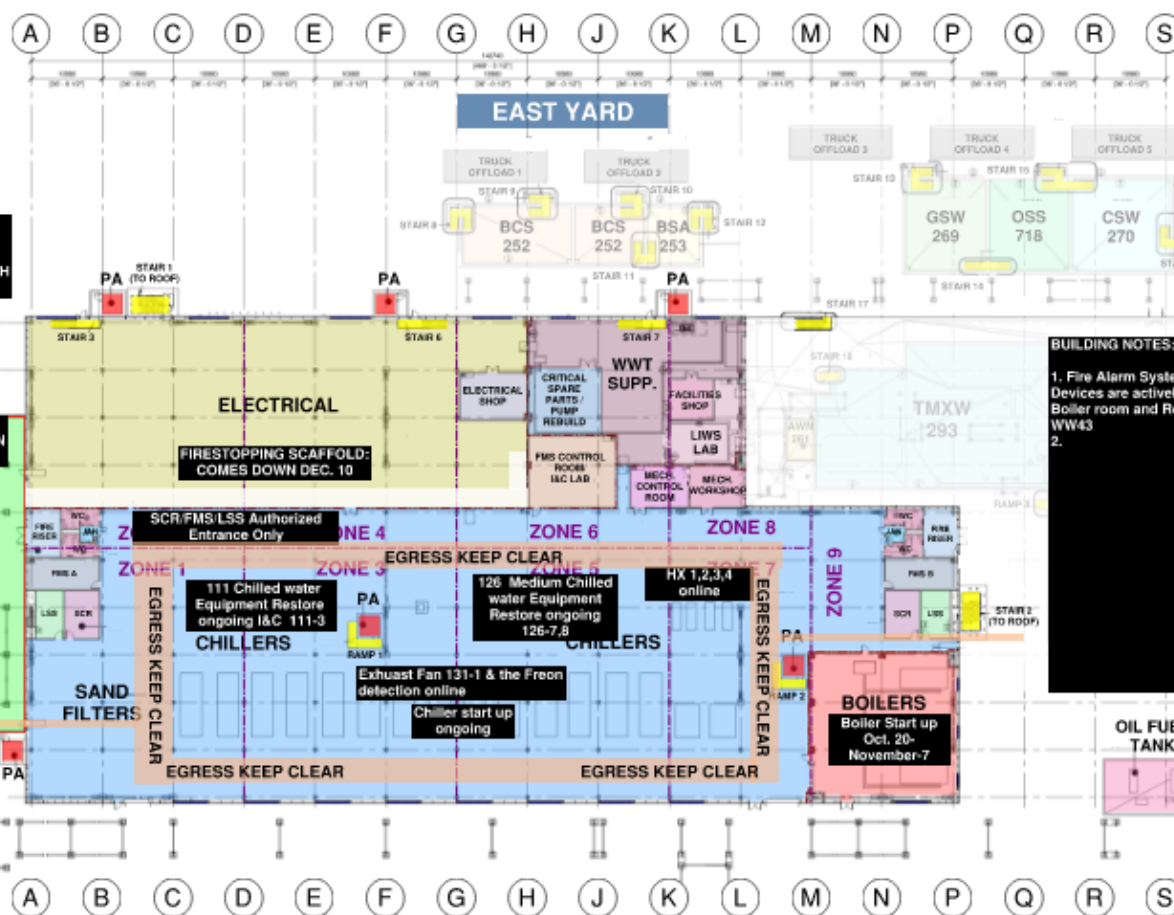




# CUB 1

## CUB 1 COORDINATION MAP

UPDATED \_\_ / \_\_ / \_\_



N

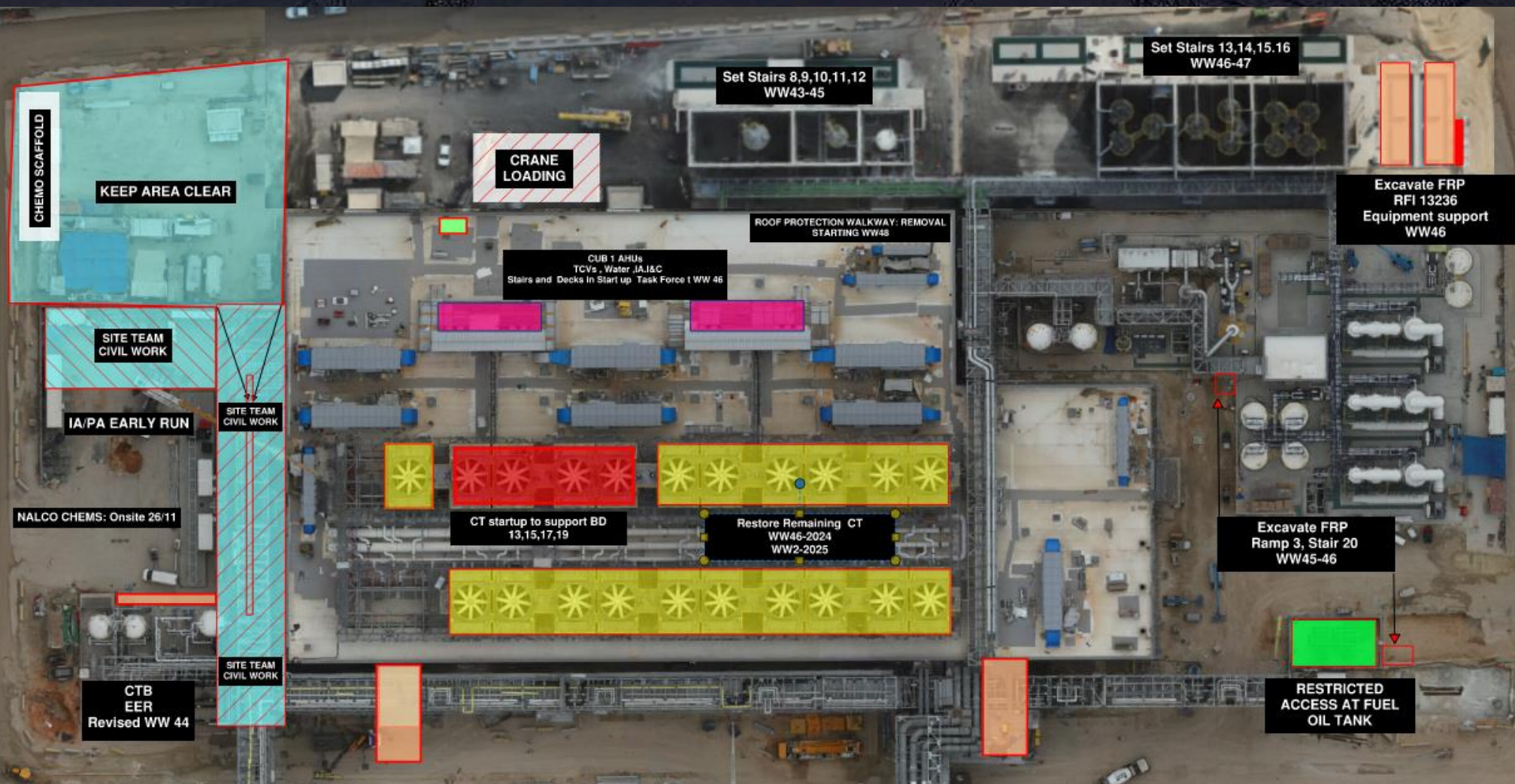
- PROTECTED AREA
- STAIRS / RAMPS
- YARDS
- TRUCK OFF/LOADING

ALARM NOTES:  
1. FIRE ALARM: WAIT FOR HCC DIRECTION  
2. GAS ALARM: EVACUATE TO NORTH YARD

BUILDING NOTES:  
1. Fire Alarm System  
Devices are actively monitored  
Boiler room and Roof Charged with Water WW43  
2.

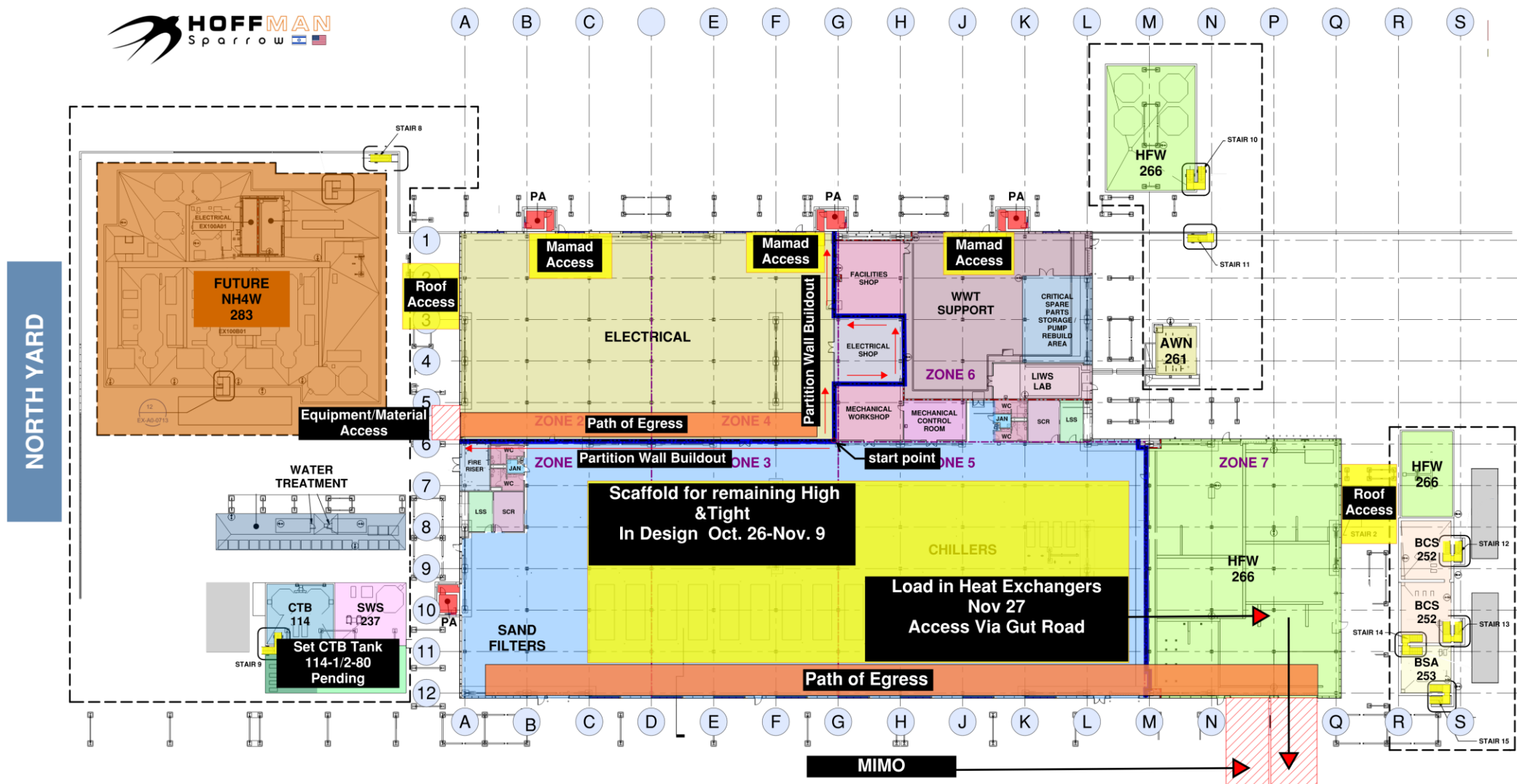


# CUB 1 – EXTERIOR/ROOF



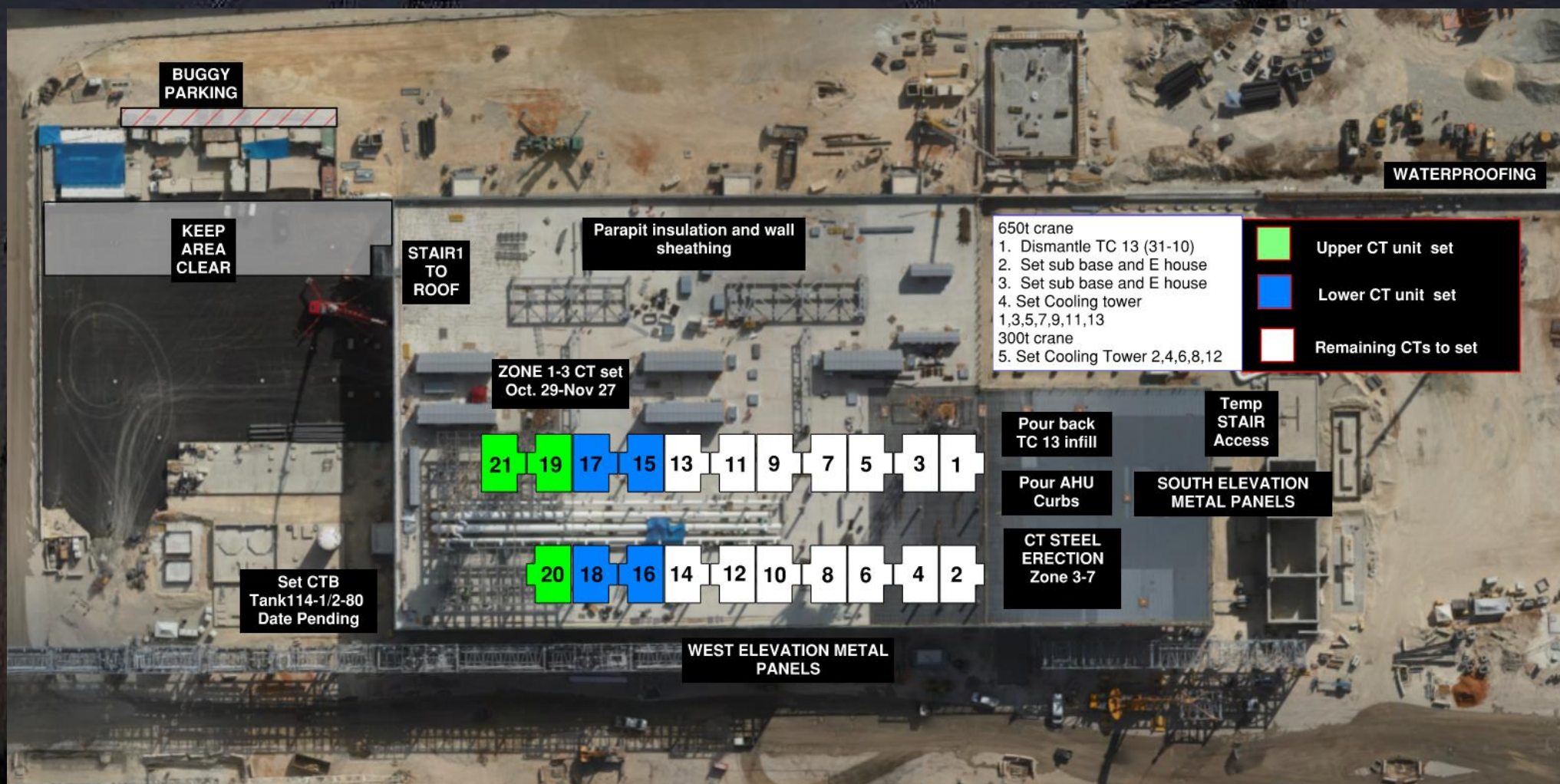
# CUB 2- Load in and H&T

## CUB 2 COORDINATION MAP





# CUB 2 – EXTERIOR/ROOF



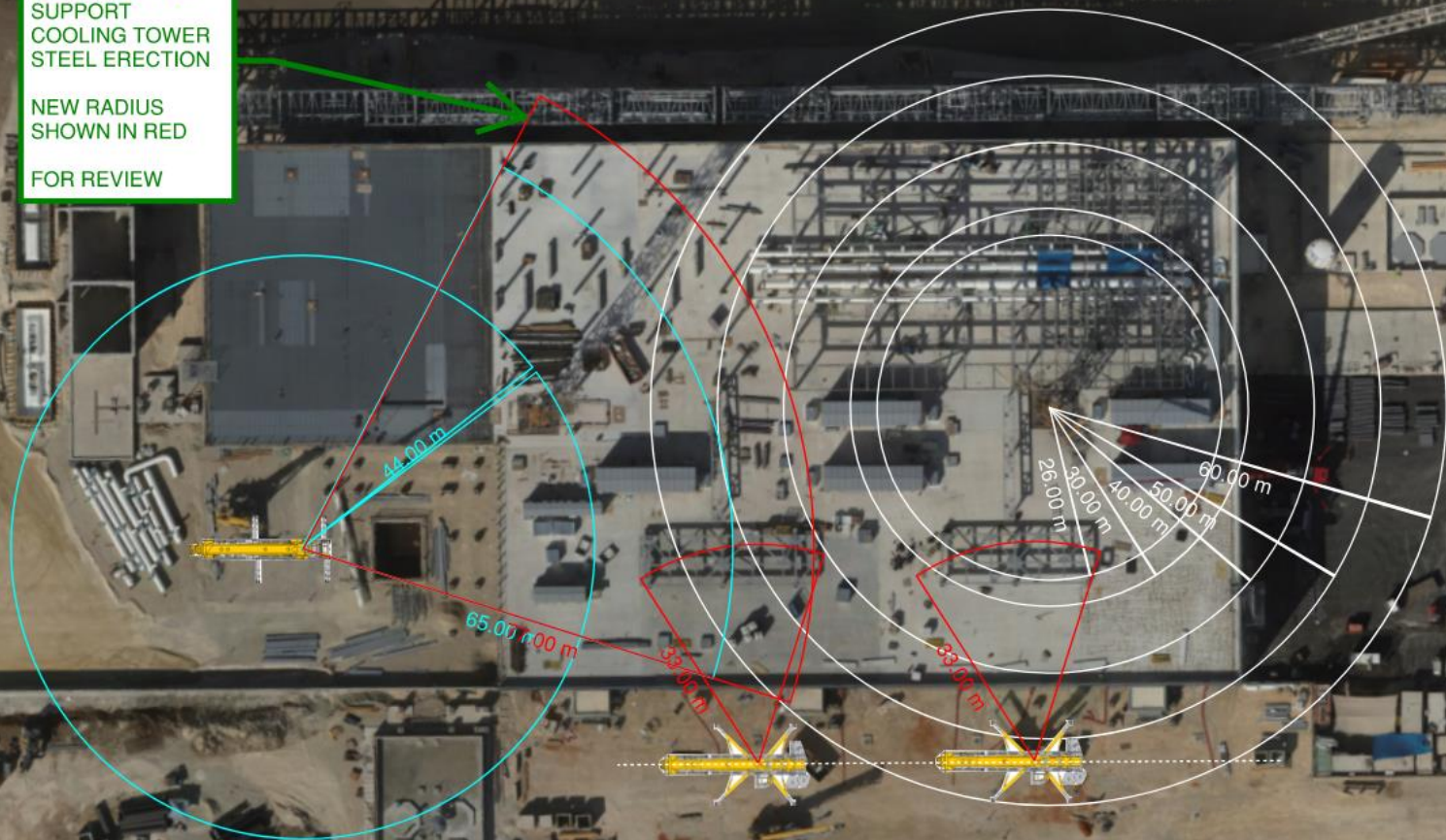


# CUB 2 – Crane Logistics

PROPOSE TO ADD  
12M JIB  
EXTENSION TO  
SUPPORT  
COOLING TOWER  
STEEL ERECTION

NEW RADIUS  
SHOWN IN RED

FOR REVIEW









# Daily Coordination Meeting

## Site Logistics

### North



**DO NOT EMPTY TOTES ON  
THE GROUND OR INTO THE  
STORM SYSTEM!**

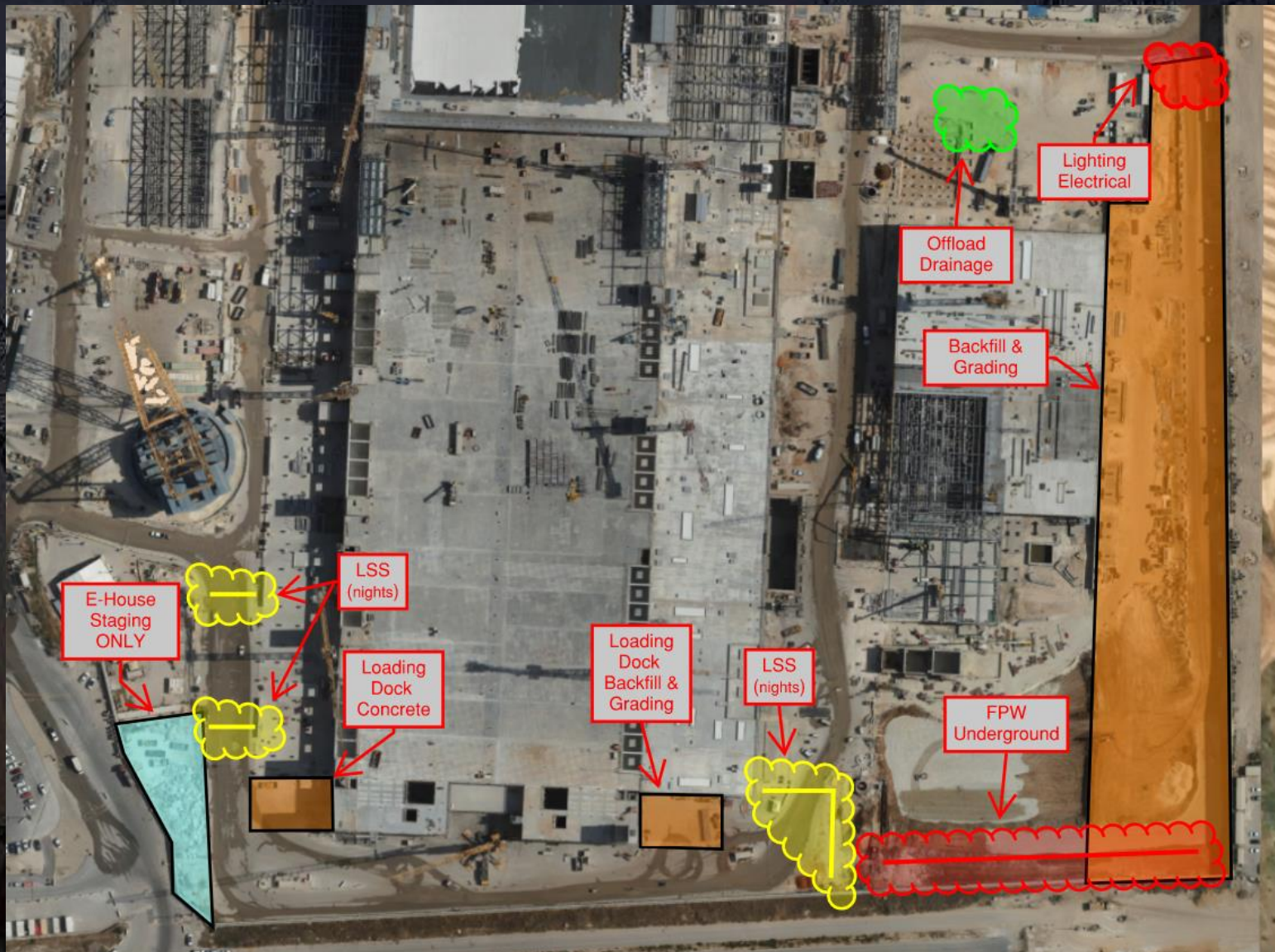
**DO NOT PUMP WATER TO  
MANHOLES**



# Daily Coordination Meeting

## Site Logistics

### South





## Plans Accessible in the Field

- Your crews must have access to plans in the field.

- PTPs
- Rigging plans
- Fall protection plans
- Pressure test procedures
- Etc.
- This requires that you have these plans created AND that you have shared them with the crews performing the work.
- This cannot be stated more plainly. Get plans completed and in the hands of your workers in the field.

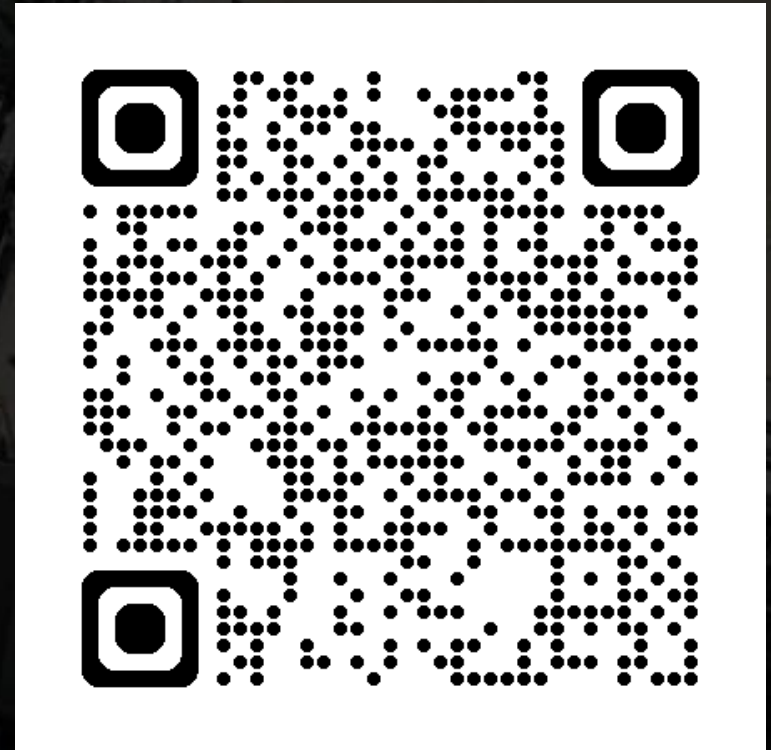


## Line of Fire Campaign Activity

### Stop and Think

Click on the link or scan the QR code. Ask a worker the 3 questions and fill out the survey

1. What pinch points or line of fire hazards are present with your work?
2. What pinch point or line of fire hazard do you not control?
3. What is one way you are going to change your behavior to better mitigate pinch points and line of fire hazards in your work?



# Daily Coordination Meeting



14:00 Sign In