

# Daily Coordination Meeting



14:00 Sign In

# Daily Coordination Meeting

## General Topics:

- Red flags- holidays start next week
- Theft

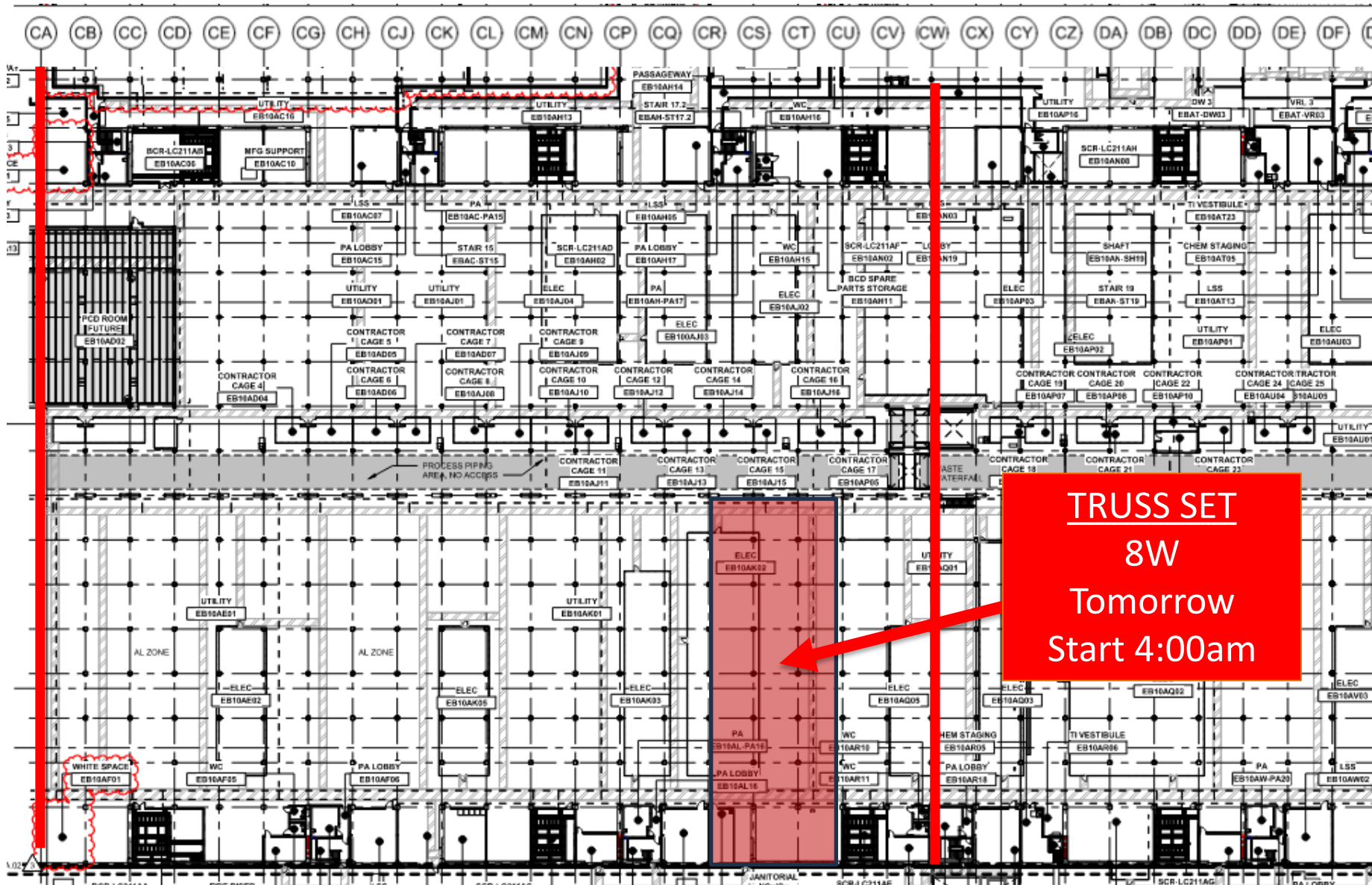




HOFFMAN CONSTRUCTION COMPANY



## UTILITY LEVEL TRUSS



**TRUSS SET**  
**8W**  
**Tomorrow**  
**Start 4:00am**



**SK CUB TEST**  
9E  
Today  
Start 5:00pm

WHITE SPACE  
EB10AF51

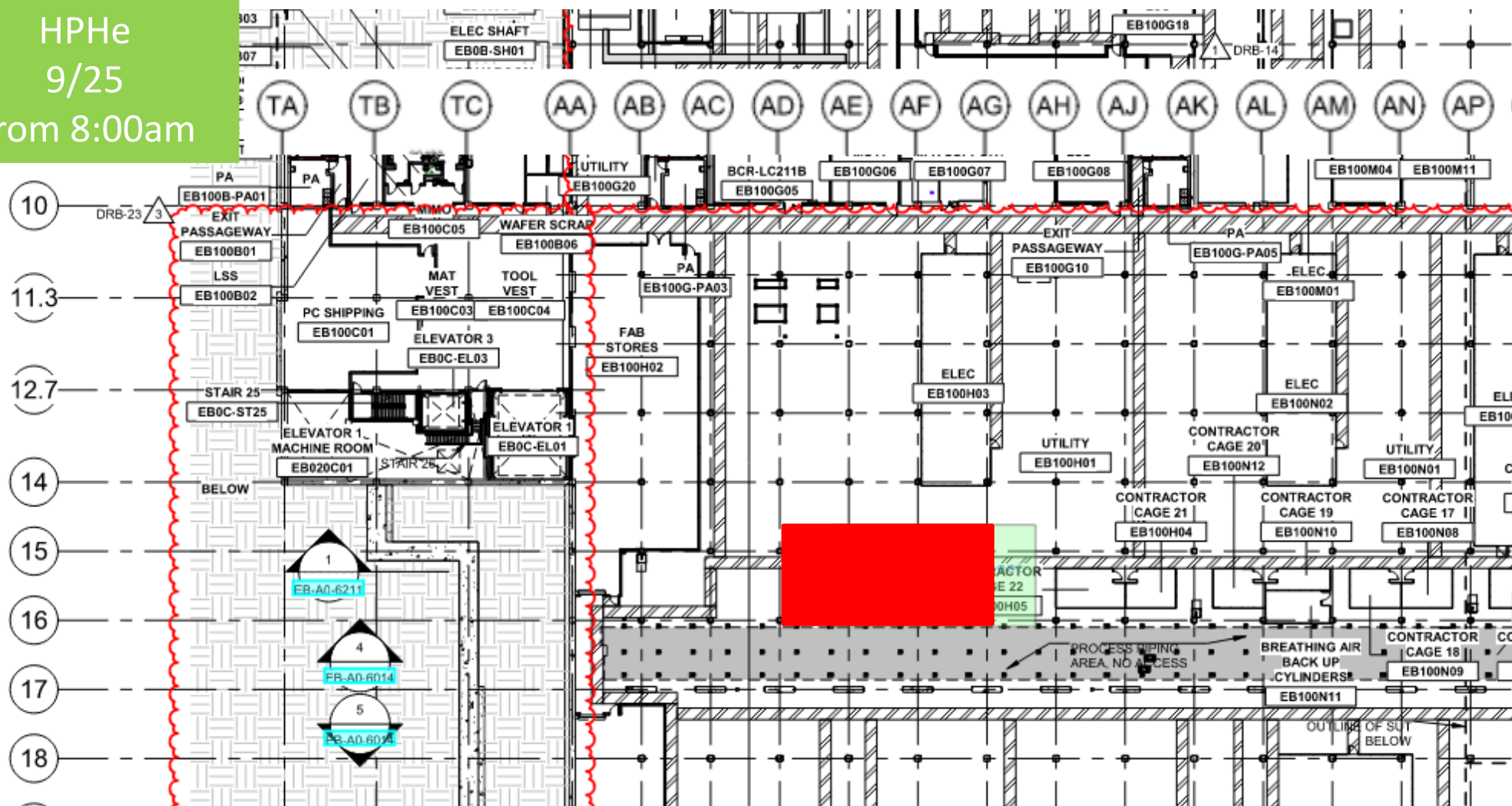
AL ZONE

CONTRACTOR CAGE 11  
CONTRACTOR CAGE 12  
CONTRACTOR CAGE 13  
CONTRACTOR CAGE 14  
CONTRACTOR CAGE 15  
CONTRACTOR CAGE 16  
CONTRACTOR CAGE 17  
CONTRACTOR CAGE 18  
CONTRACTOR CAGE 19  
CONTRACTOR CAGE 20  
CONTRACTOR CAGE 21  
CONTRACTOR CAGE 22  
CONTRACTOR CAGE 23  
CONTRACTOR CAGE 24  
CONTRACTOR CAGE 25  
CONTRACTOR CAGE 26  
CONTRACTOR CAGE 27  
CONTRACTOR CAGE 28  
CONTRACTOR CAGE 29  
CONTRACTOR CAGE 30  
CONTRACTOR CAGE 31  
CONTRACTOR CAGE 32  
CONTRACTOR CAGE 33  
CONTRACTOR CAGE 34  
CONTRACTOR CAGE 35  
CONTRACTOR CAGE 36  
CONTRACTOR CAGE 37  
CONTRACTOR CAGE 38  
CONTRACTOR CAGE 39  
CONTRACTOR CAGE 40  
CONTRACTOR CAGE 41  
CONTRACTOR CAGE 42  
CONTRACTOR CAGE 43  
CONTRACTOR CAGE 44  
CONTRACTOR CAGE 45  
CONTRACTOR CAGE 46  
CONTRACTOR CAGE 47  
CONTRACTOR CAGE 48  
CONTRACTOR CAGE 49  
CONTRACTOR CAGE 50  
CONTRACTOR CAGE 51  
CONTRACTOR CAGE 52  
CONTRACTOR CAGE 53  
CONTRACTOR CAGE 54  
CONTRACTOR CAGE 55  
CONTRACTOR CAGE 56  
CONTRACTOR CAGE 57  
CONTRACTOR CAGE 58  
CONTRACTOR CAGE 59  
CONTRACTOR CAGE 60  
CONTRACTOR CAGE 61  
CONTRACTOR CAGE 62  
CONTRACTOR CAGE 63  
CONTRACTOR CAGE 64  
CONTRACTOR CAGE 65  
CONTRACTOR CAGE 66  
CONTRACTOR CAGE 67  
CONTRACTOR CAGE 68  
CONTRACTOR CAGE 69  
CONTRACTOR CAGE 70  
CONTRACTOR CAGE 71  
CONTRACTOR CAGE 72  
CONTRACTOR CAGE 73  
CONTRACTOR CAGE 74  
CONTRACTOR CAGE 75  
CONTRACTOR CAGE 76  
CONTRACTOR CAGE 77  
CONTRACTOR CAGE 78  
CONTRACTOR CAGE 79  
CONTRACTOR CAGE 80  
CONTRACTOR CAGE 81  
CONTRACTOR CAGE 82  
CONTRACTOR CAGE 83  
CONTRACTOR CAGE 84  
CONTRACTOR CAGE 85  
CONTRACTOR CAGE 86  
CONTRACTOR CAGE 87  
CONTRACTOR CAGE 88  
CONTRACTOR CAGE 89  
CONTRACTOR CAGE 90  
CONTRACTOR CAGE 91  
CONTRACTOR CAGE 92  
CONTRACTOR CAGE 93  
CONTRACTOR CAGE 94  
CONTRACTOR CAGE 95  
CONTRACTOR CAGE 96  
CONTRACTOR CAGE 97  
CONTRACTOR CAGE 98  
CONTRACTOR CAGE 99  
CONTRACTOR CAGE 100





Air Prod.  
Press. Test  
HPHe  
9/25  
From 8:00am





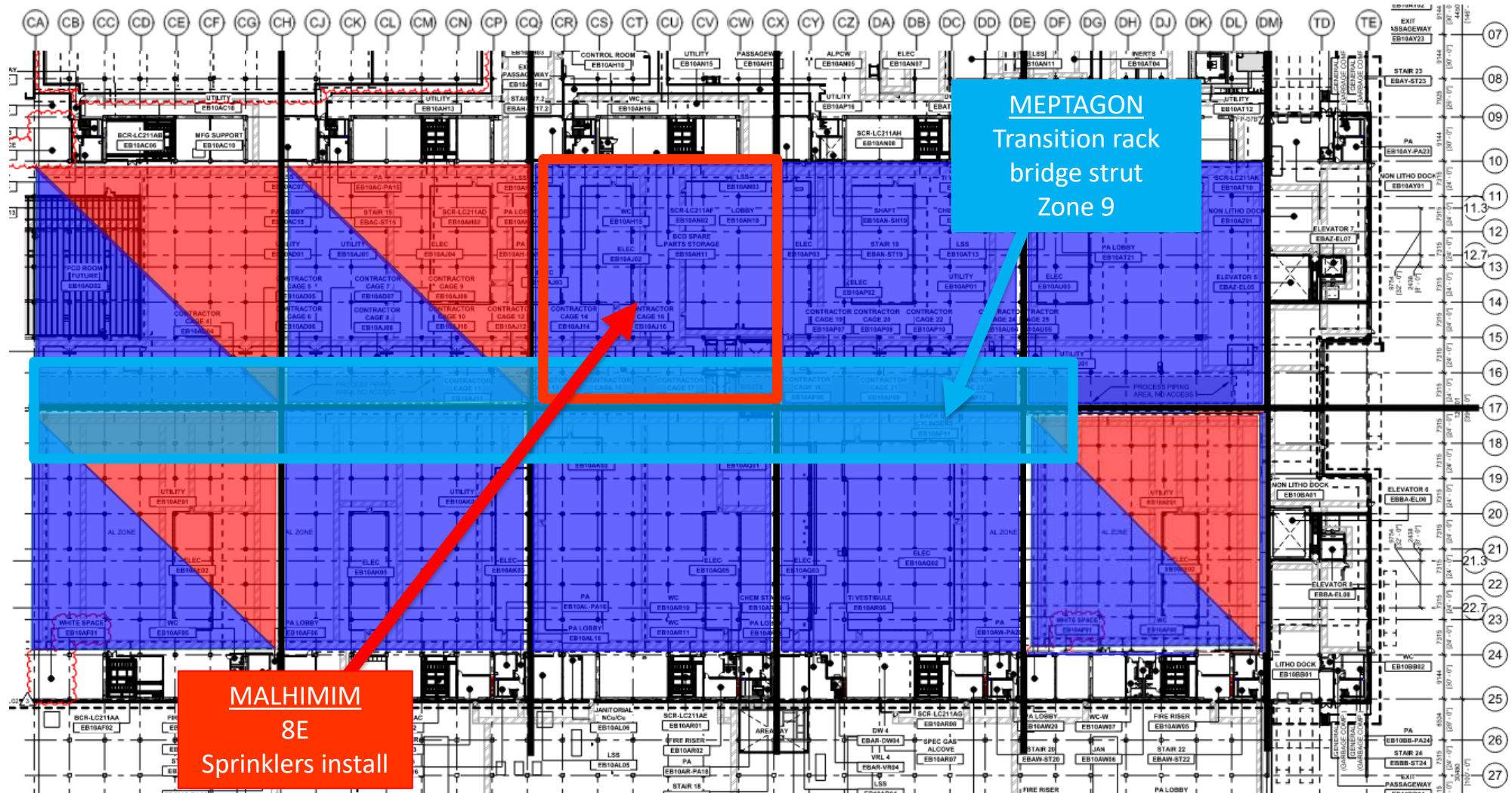
TTNE - Corridor + Toilets + Break R  
Stairs 7.3  
Wafer scrap  
TTNW - Toilets + Break R  
SCR 2W  
Exit pass 3W

**Ongoing**  
LSS TTNW + TTNE  
BCR 1E  
CHEN STAGING  
LSS 2W  
Chem staggering  
**BACKING**  
BCR 1E+1W – Pending funding  
LSS's

Ready for re-install  
FMS A 1E  
FMS B 1W  
Fire Risers 1W  
BCC

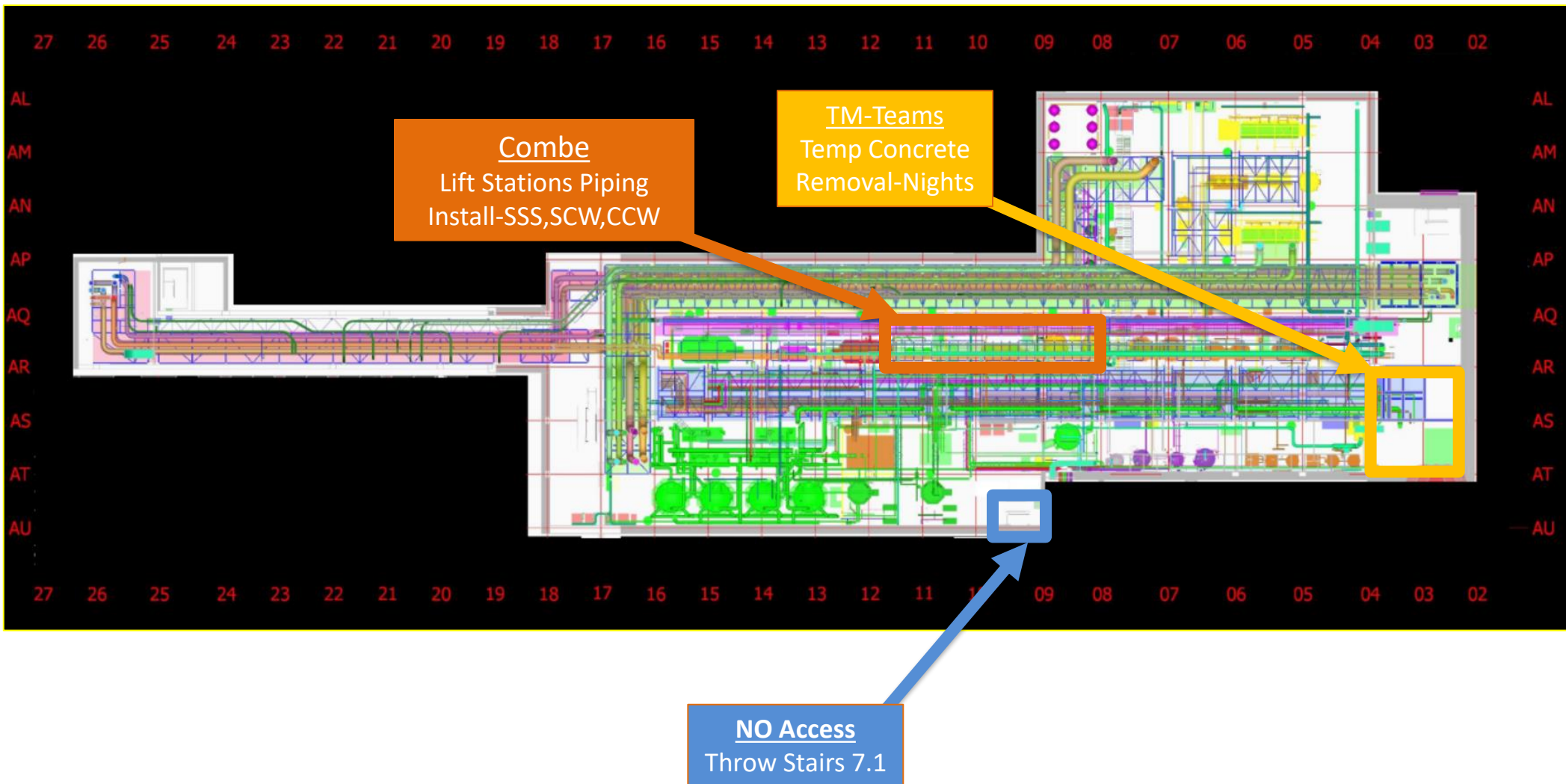


# UTILITY LEVEL MOD2





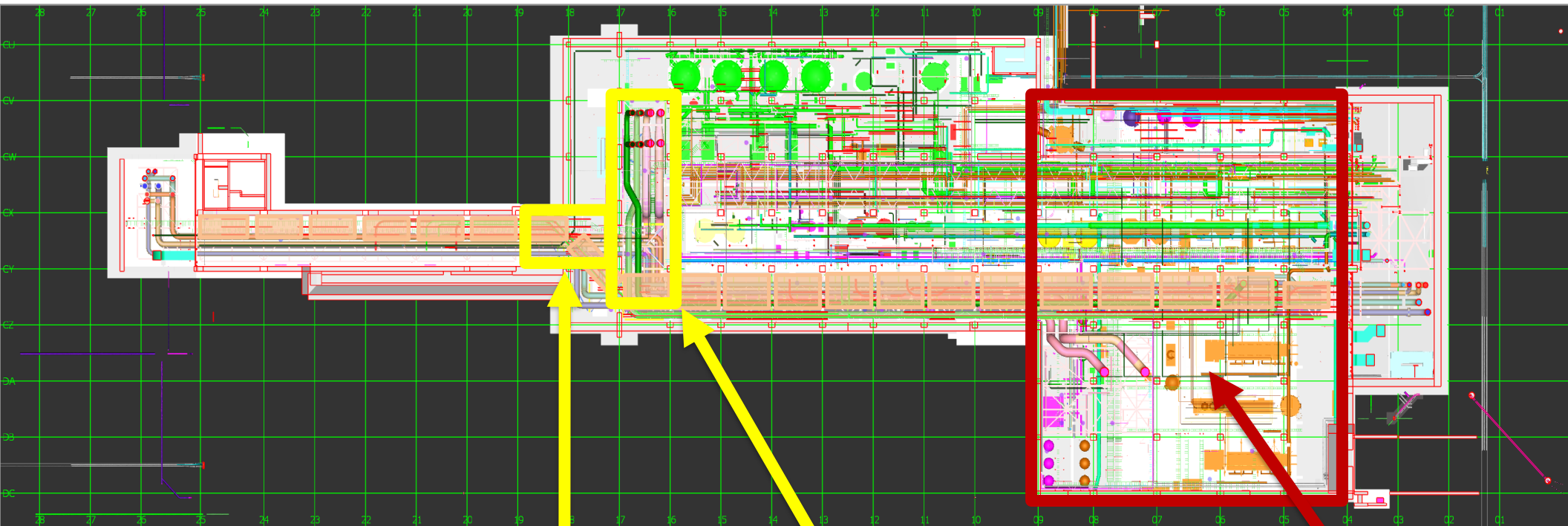
## SUT 38.1 LEVEL







## SUT 38.2 LEVEL



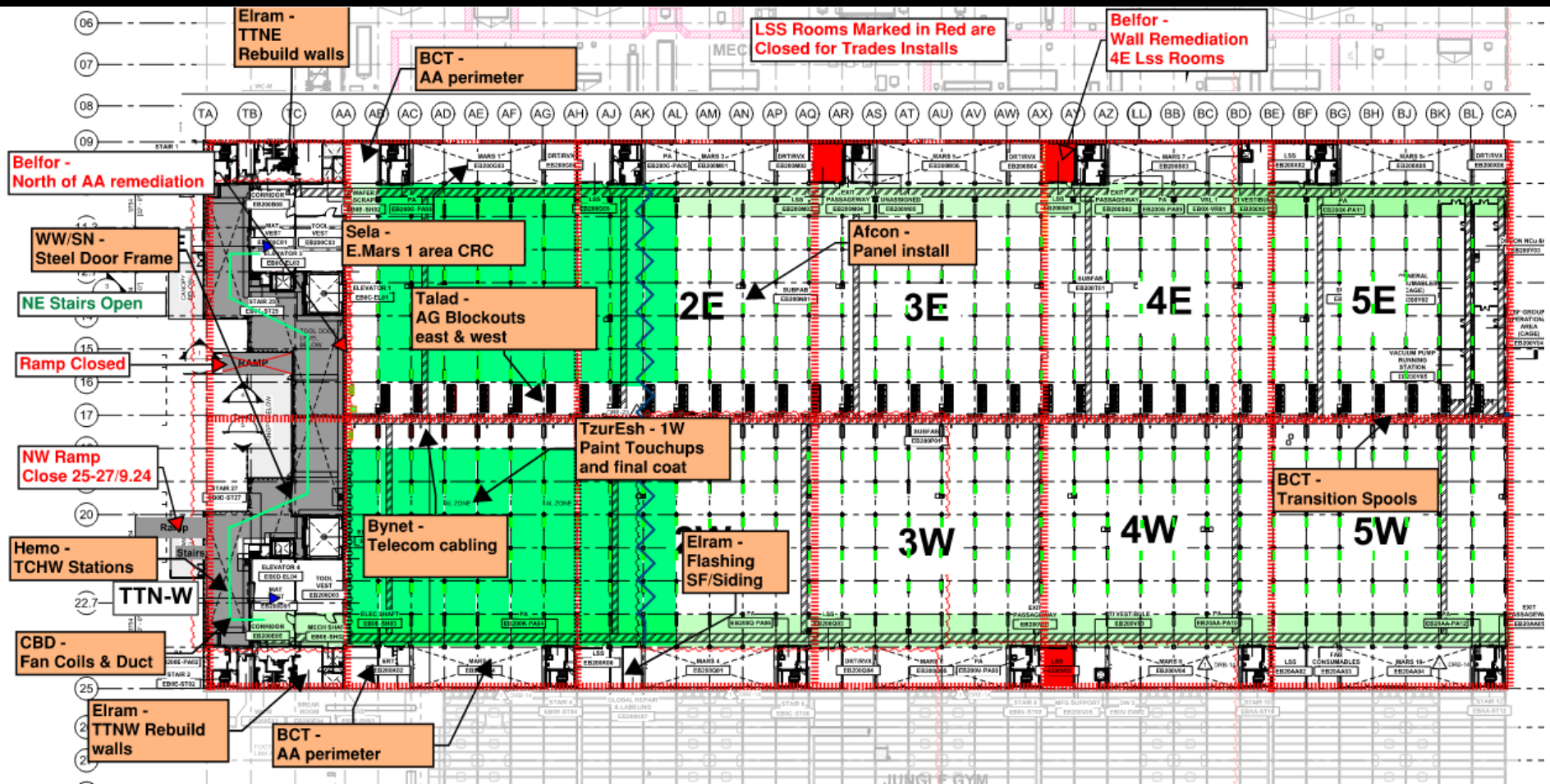
CRW  
H&T  
NEED PIPING

17-18 line  
Bore Loading

16-17 line  
lvl2+3  
bed lift: Need a  
Date

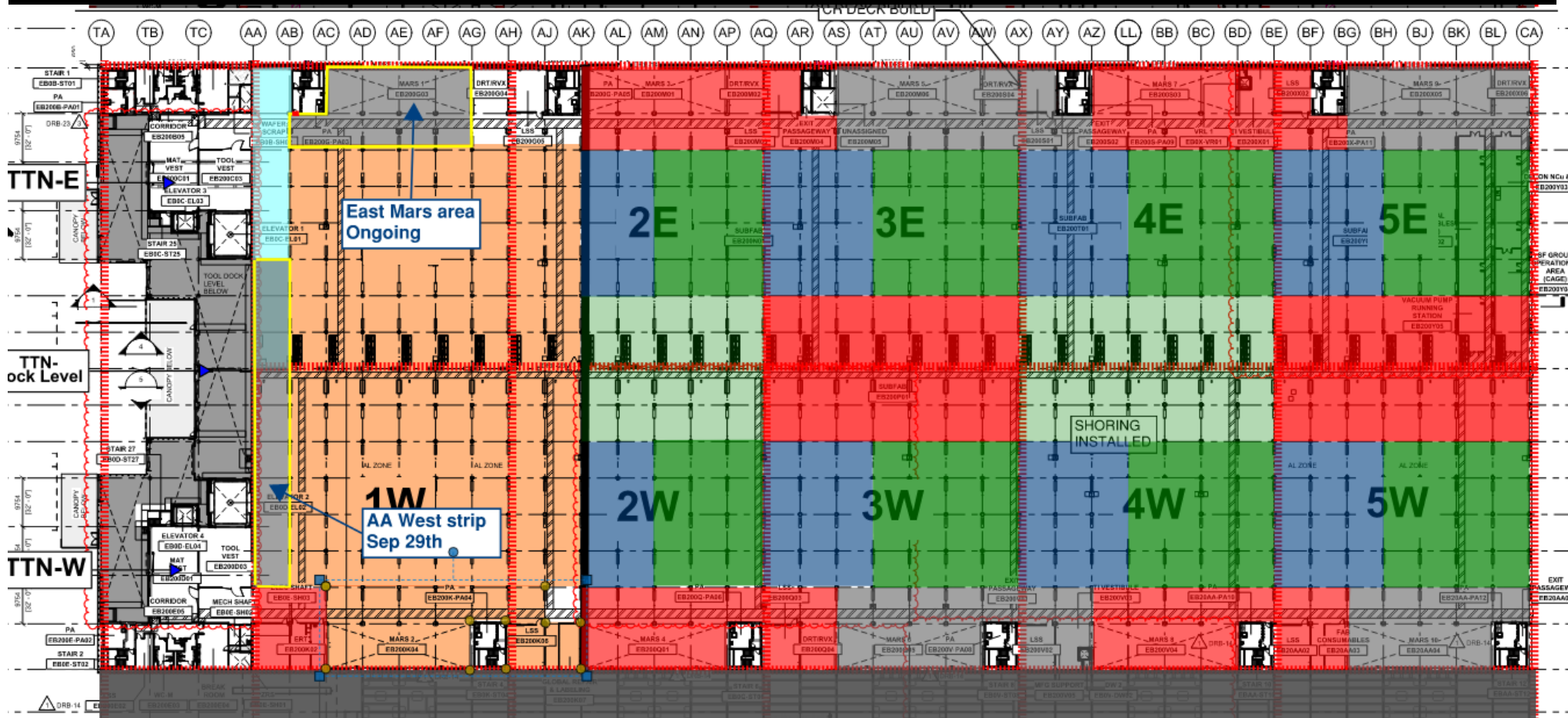
Vesda  
H&T  
Ongoing

# SUBFAB BUILDOUT MOD 1

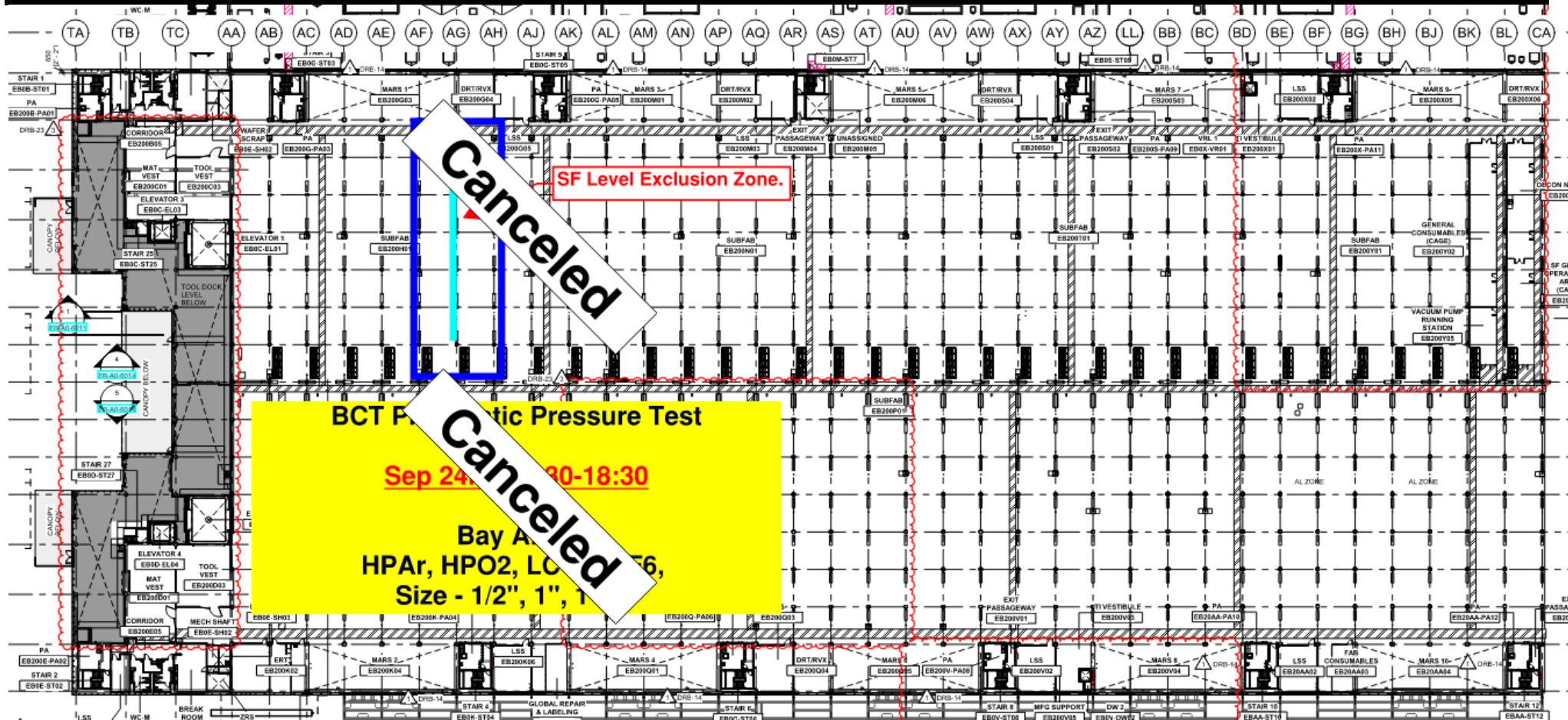




# SUBFAB CRC TOPCOAT

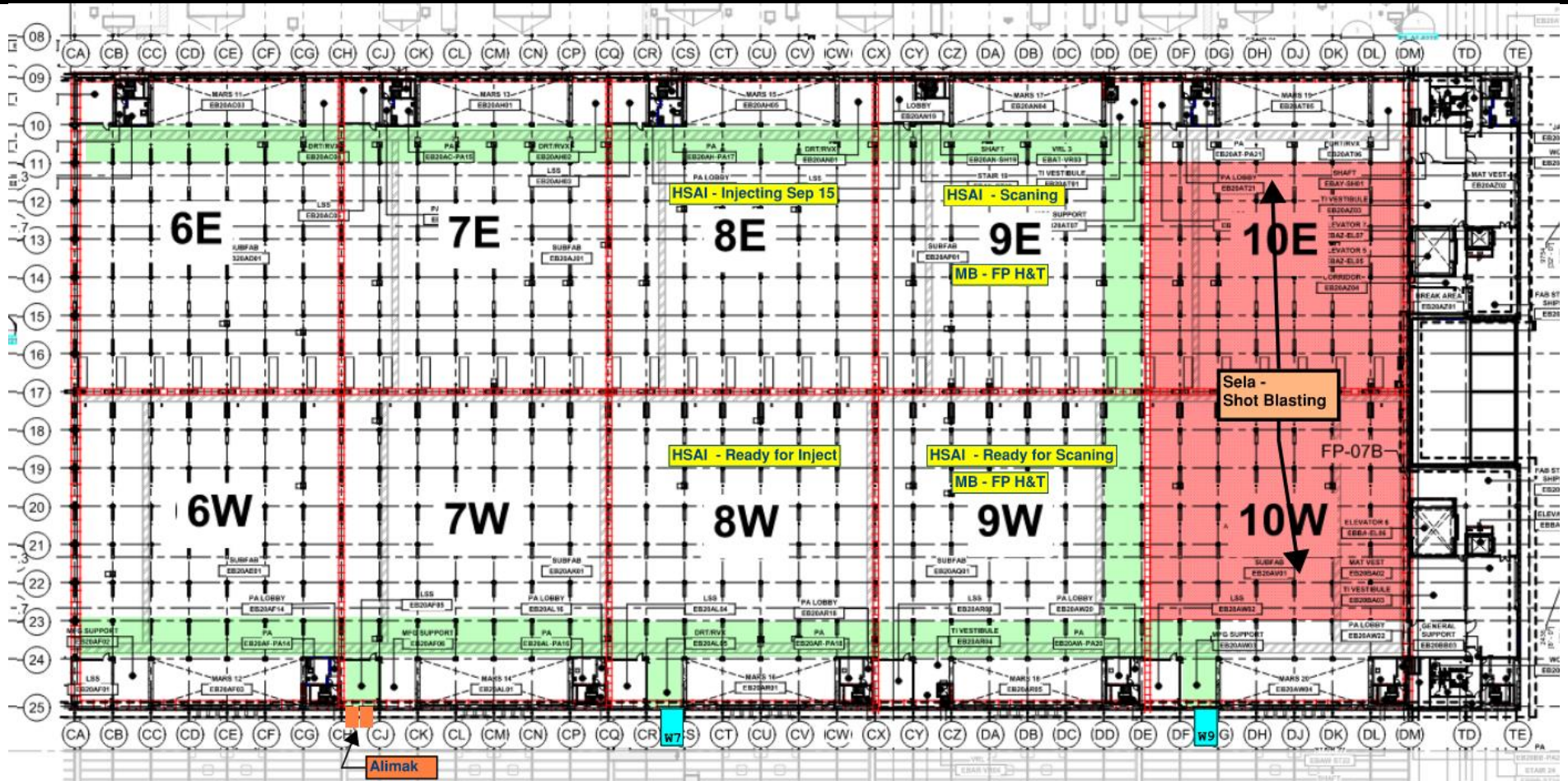


# SUBFUB PRESSURE TEST EXCLUSION ZONES

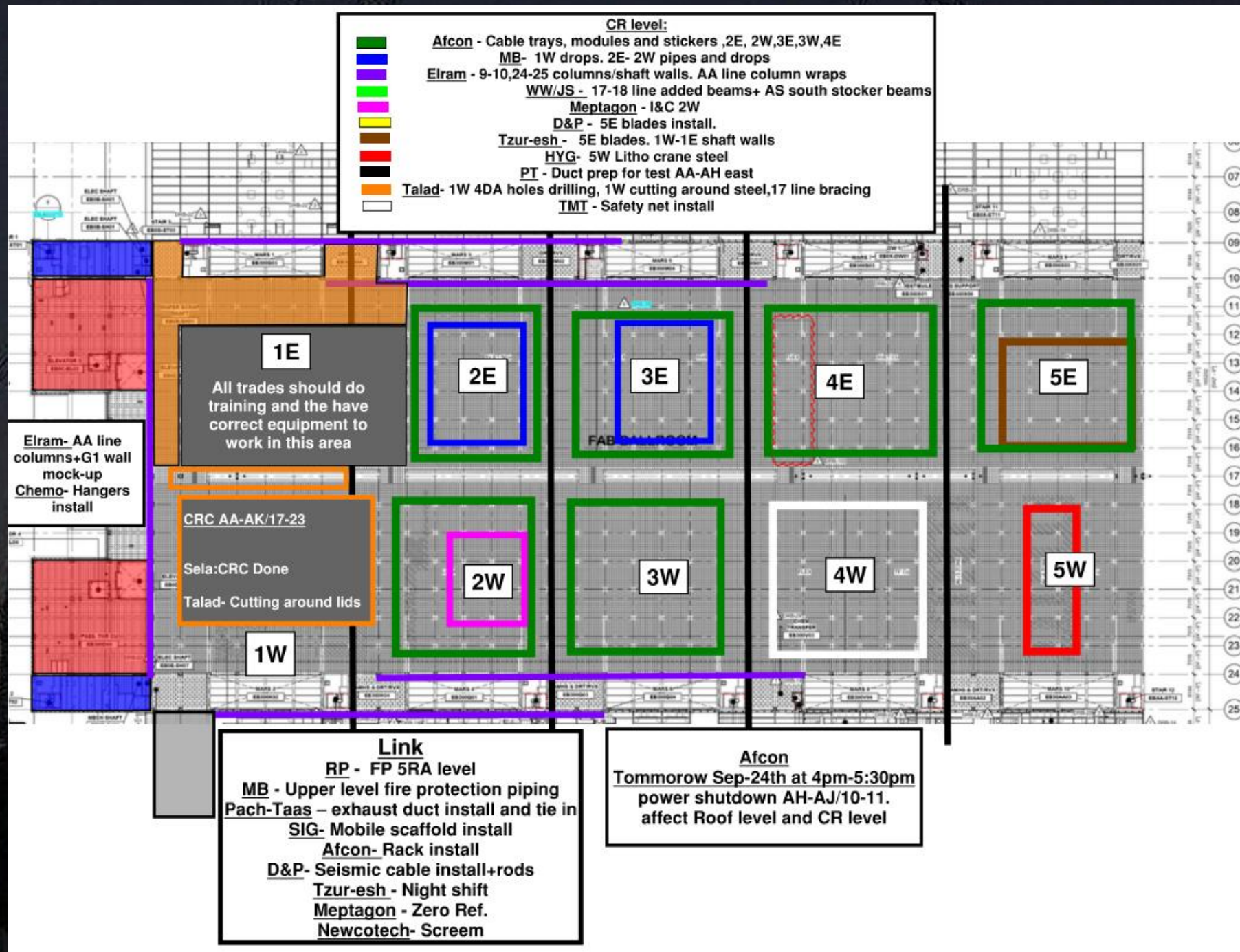




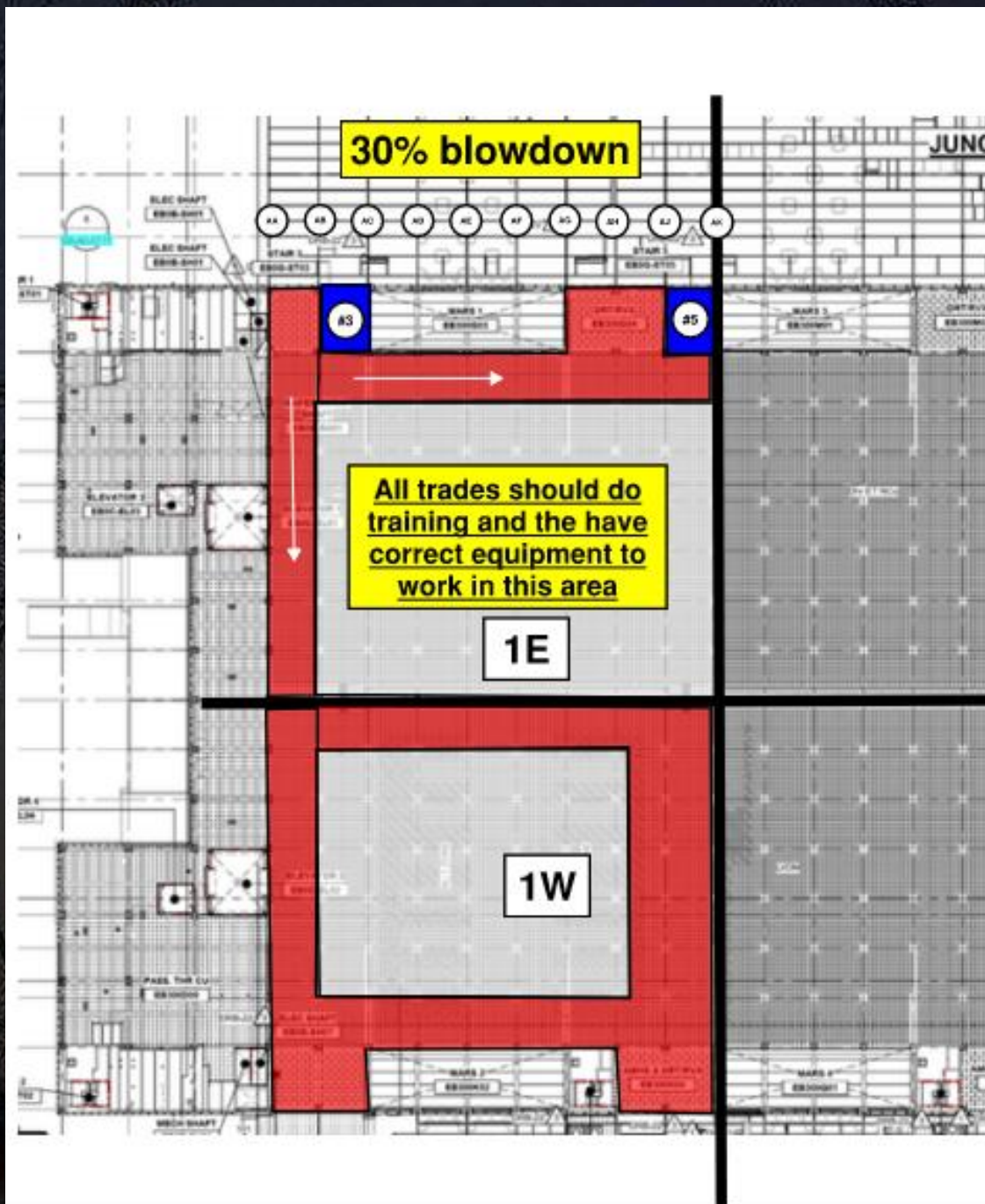
# SUBFAB BUILDOUT MOD 2

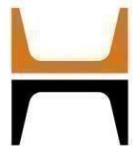




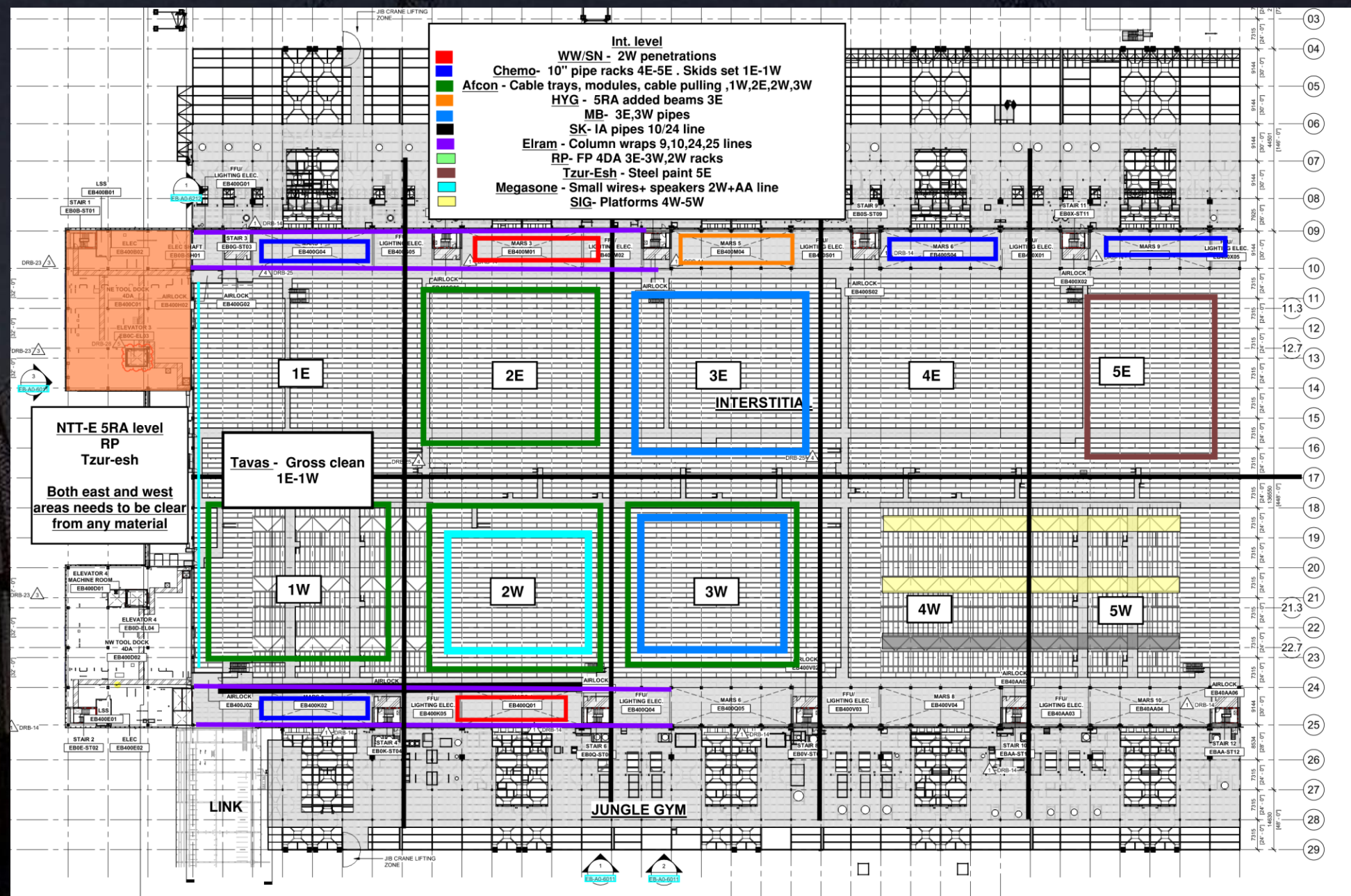




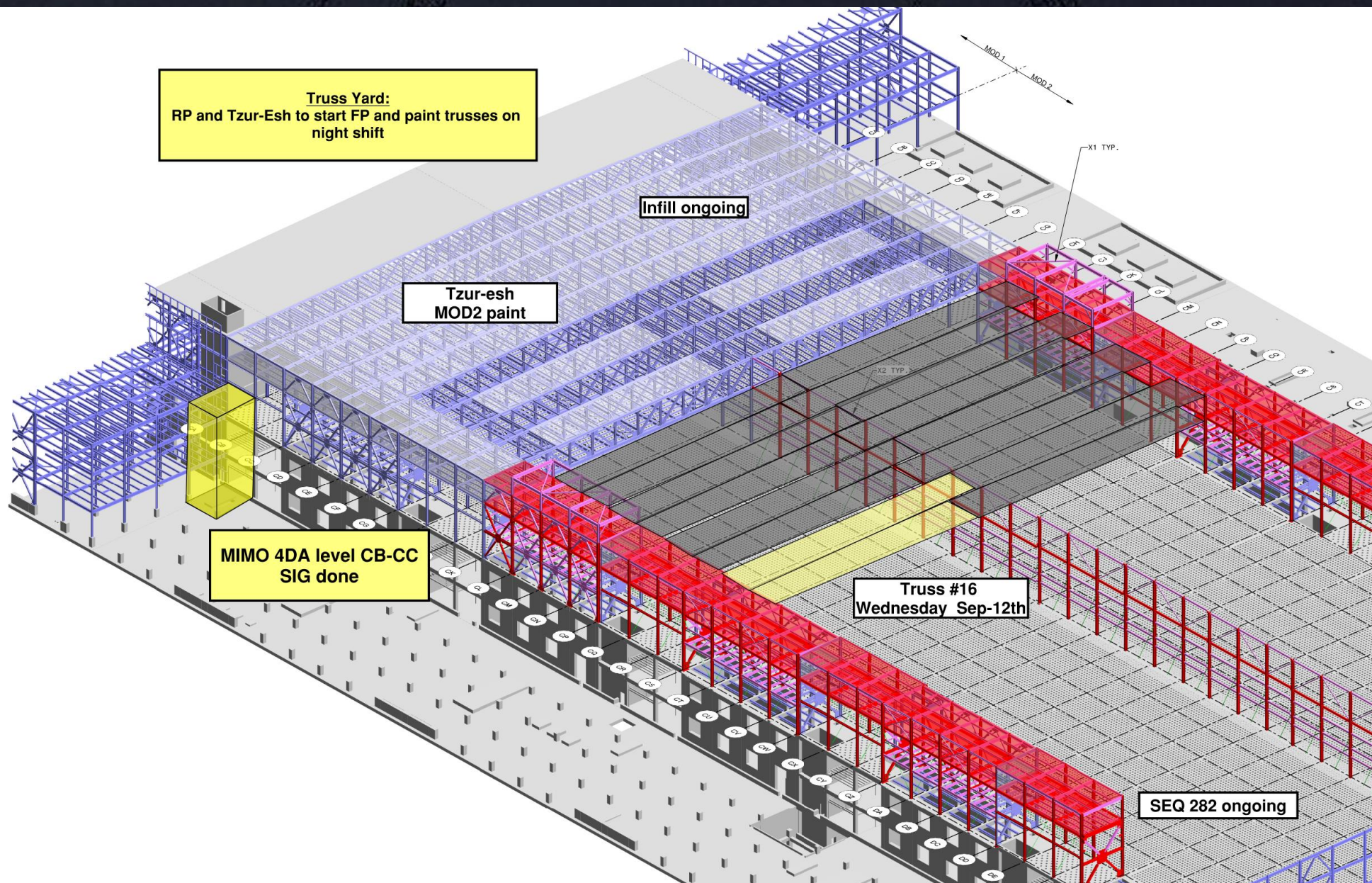




- Int. level
- WW/SN - 2W penetrations
  - Chemo- 10" pipe racks 4E-5E . Skids set 1E-1W
  - Afcon - Cable trays, modules, cable pulling ,1W,2E,2W,3W
  - HYG - 5RA added beams 3E
  - MB- 3E,3W pipes
  - SK- 1A pipes 10/24 line
  - Elram - Column wraps 9,10,24,25 lines
  - RP- FP 4DA 3E-3W,2W racks
  - Tzur-Esh - Steel paint 5E
  - Megasone - Small wires+ speakers 2W+AA line
  - SIG- Platforms 4W-5W









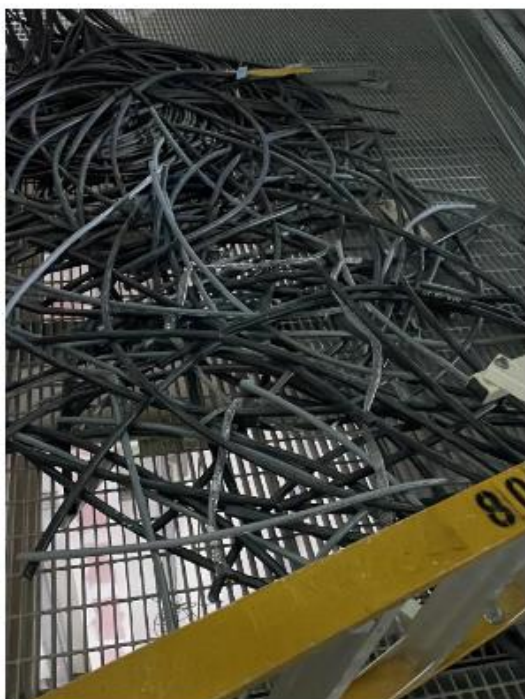


**Clean Room Wall Of Shame**

**Afcon**

**SN**

**SN**





**HYG stairs**  
Sep/22  
Belfore 2 & 25 &  
7.1  
Sep/22

**NETD-SW-1**  
STAIR 1

**01E-SW**  
STAIR 3

**02E-SW**  
STAIR 5

**03E-SW**  
steel  
STAIR 7.3

**04E-SW**  
STAIR 9

**05E-SW**  
STAIR 11

**Electra -EL1 Sep/22**  
**ASD - scaffold sep/22**  
**Elram - Aug/29 AA**  
**EL3 - steel ongoing**

**HSI-SOMD Sep/22**  
**W.W EL2 - plates**  
Sep/23

**NWTD-SW-1**  
STAIR 2

**01W-SW**  
STAIR 4

**02W-SW**  
STAIR 6

**03W-SW**  
STAIR 8

**04W-SW**  
STAIR 10

**05W-SW**  
STAIR 12

**T.M chipping Sep/18**  
**VRC Sep/25**

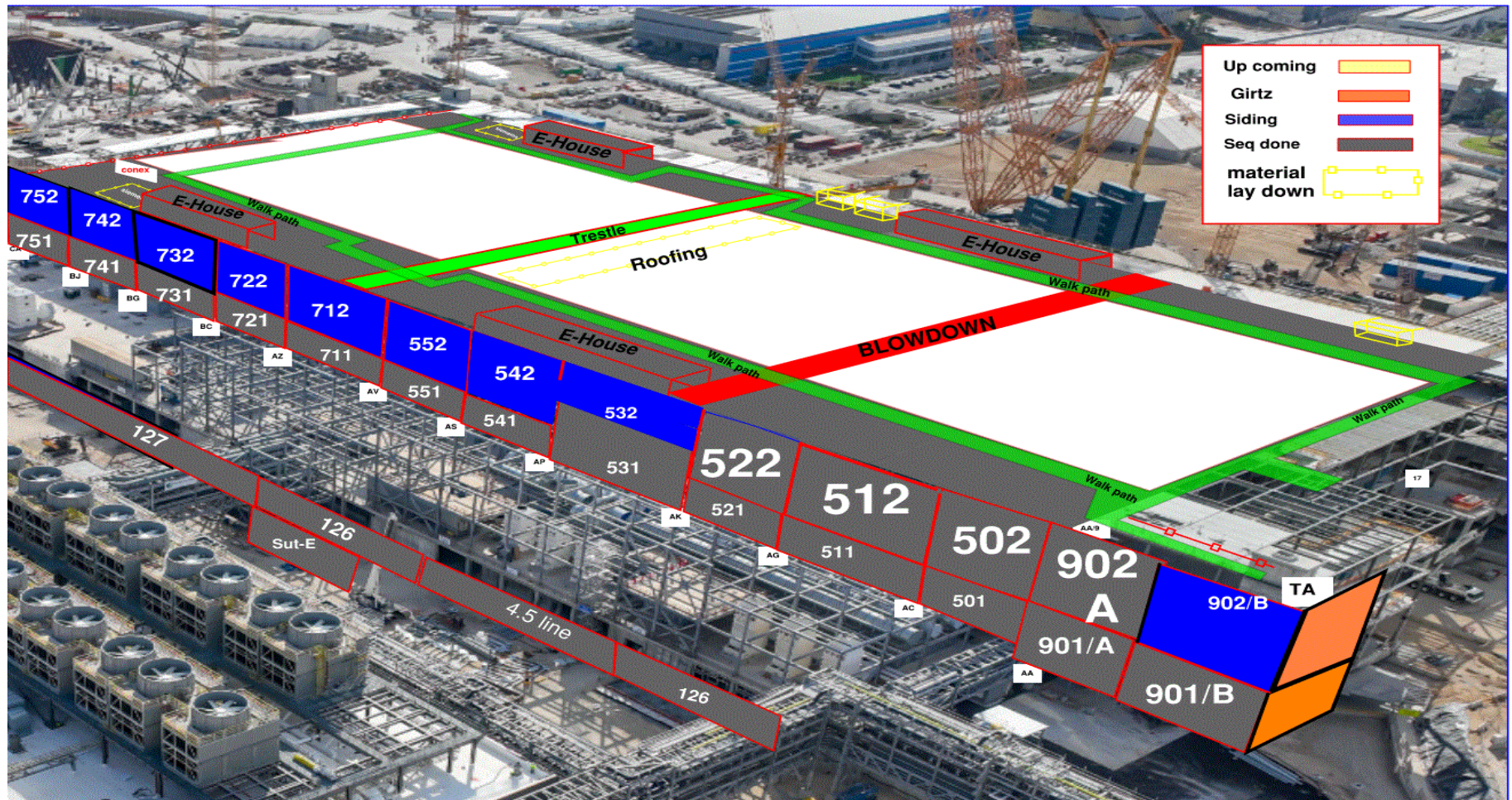
**DW + VRL**  
Sep/29  
**ELRAM -**  
drywall

**MEGASON LSS**  
**AFCON - Telecom**

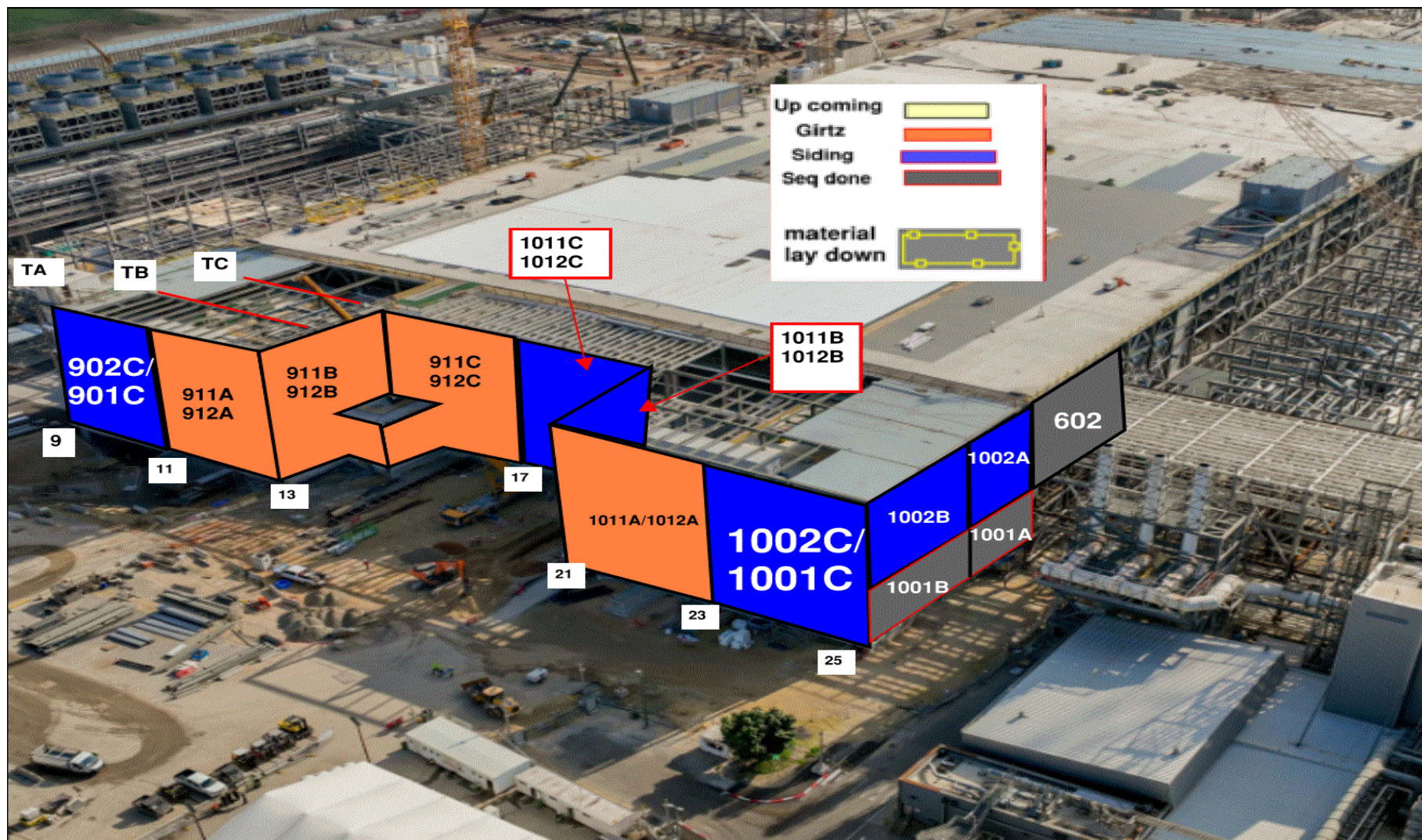
**DW + VRL**  
Sep/25  
**ELRAM -**  
drywall

**HYG Handrails**  
**#8 - Sep/24**  
**3 WEEKS**

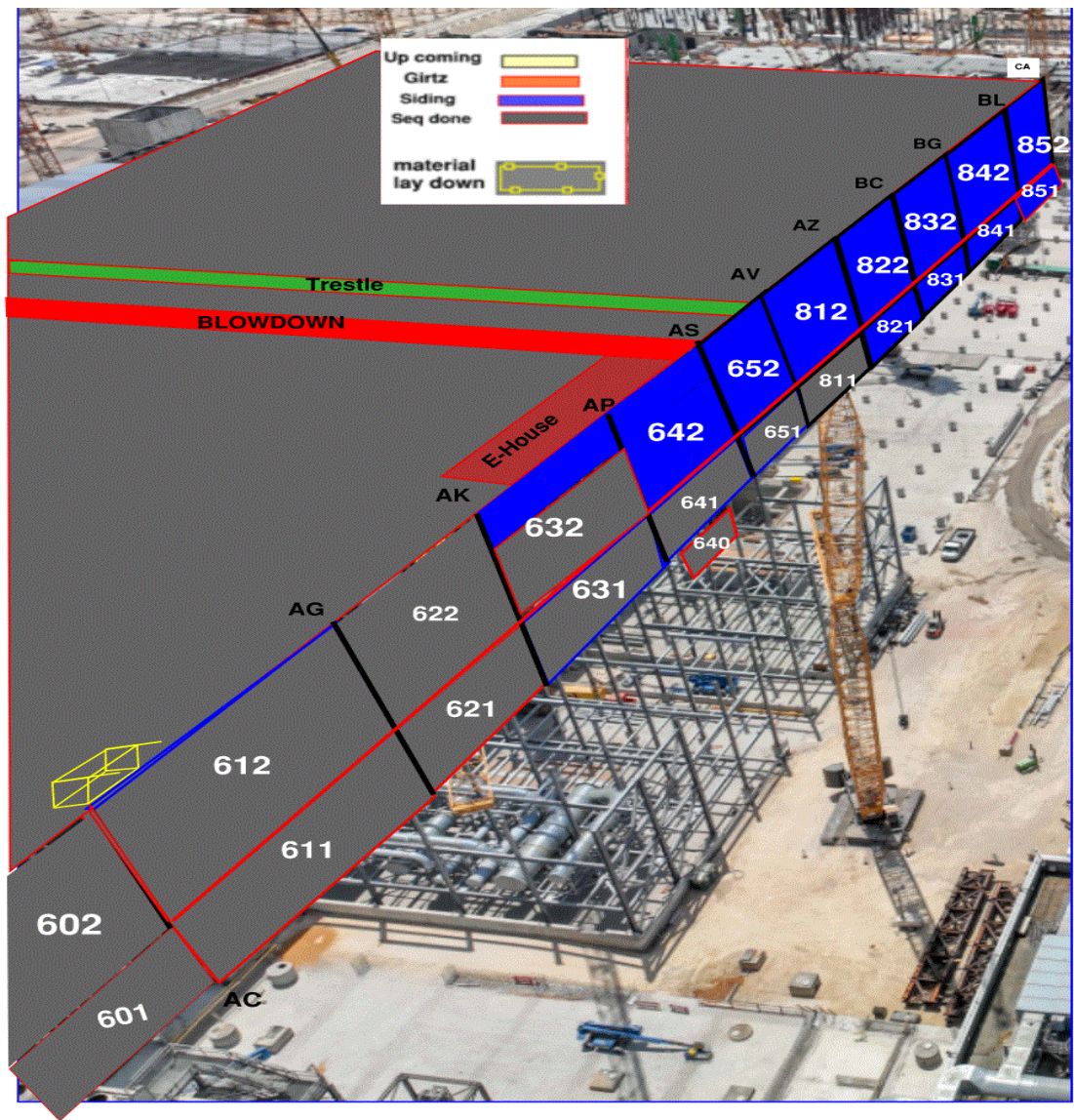














Siding - East FAB - PSSS

[illegible]

Siding - West FAB - JYG

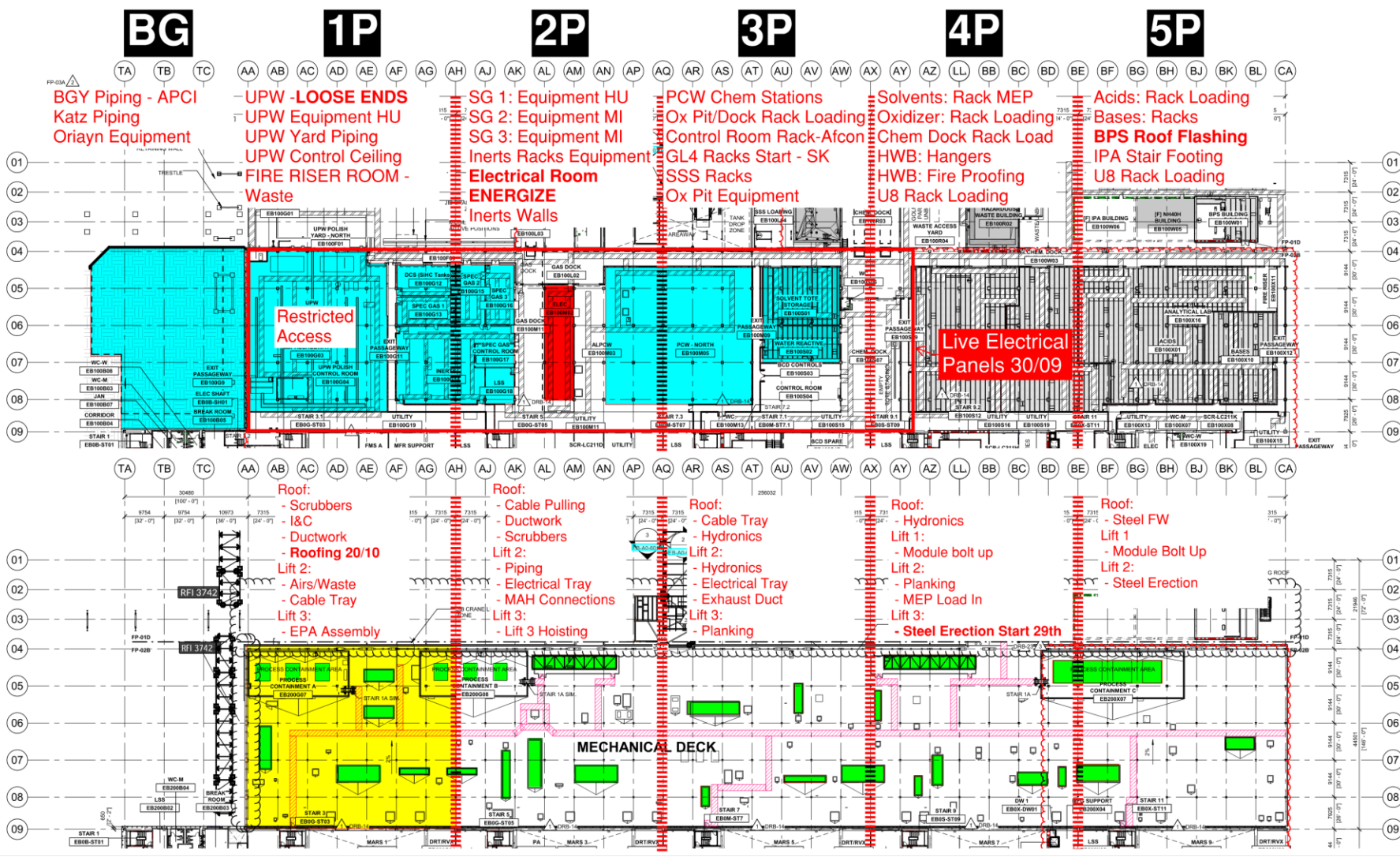
[illegible]



# PSSS.1

## Utility Level 1YA

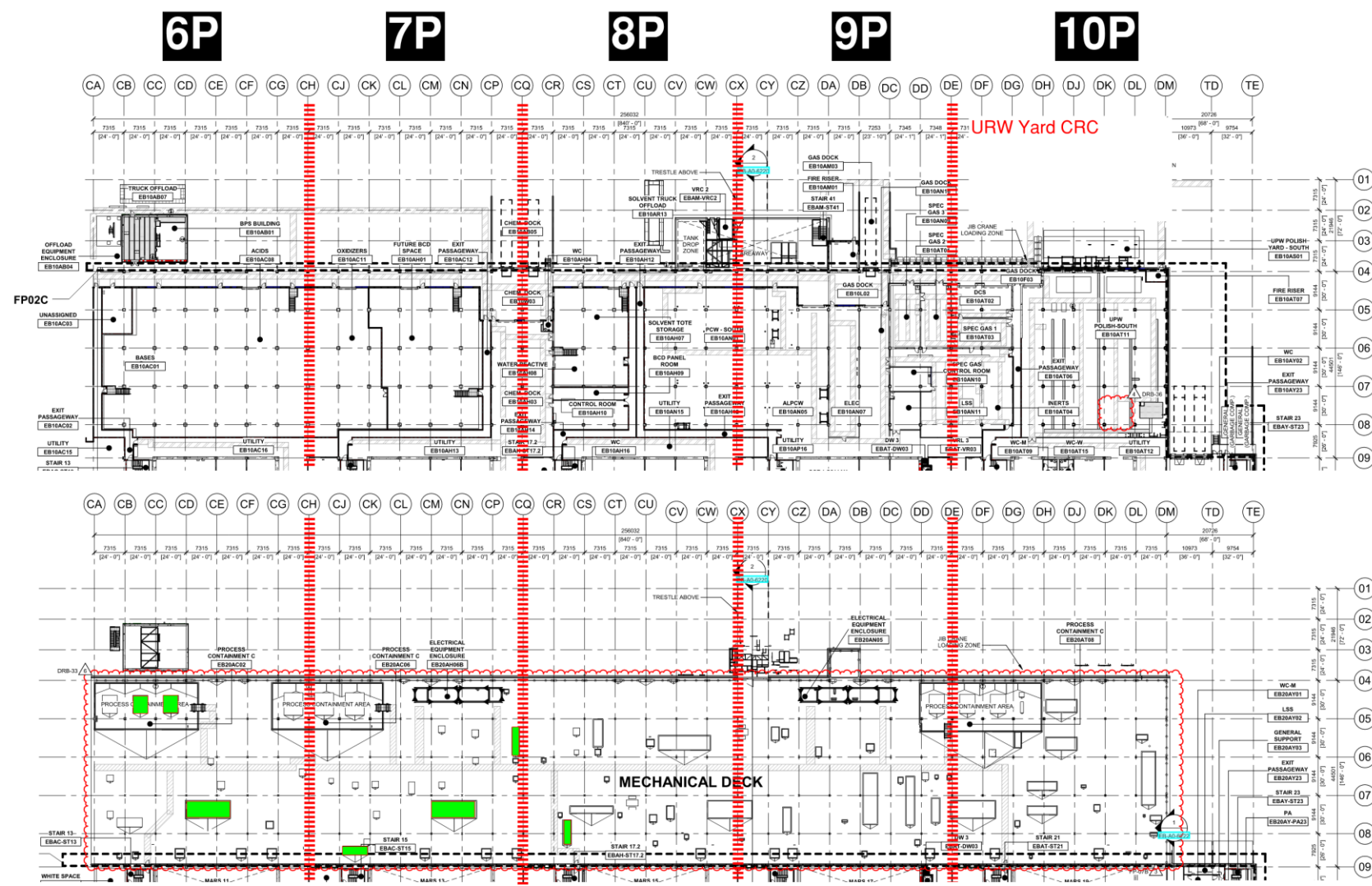
## PSSS Roof 2SA



# PSSS.2

Utility Level  
1YA

PSSS Roof  
2SA





PSSS

4P VFD Set

Hoist VFD – 24/09





**HOFFMAN CONSTRUCTION COMPANY**

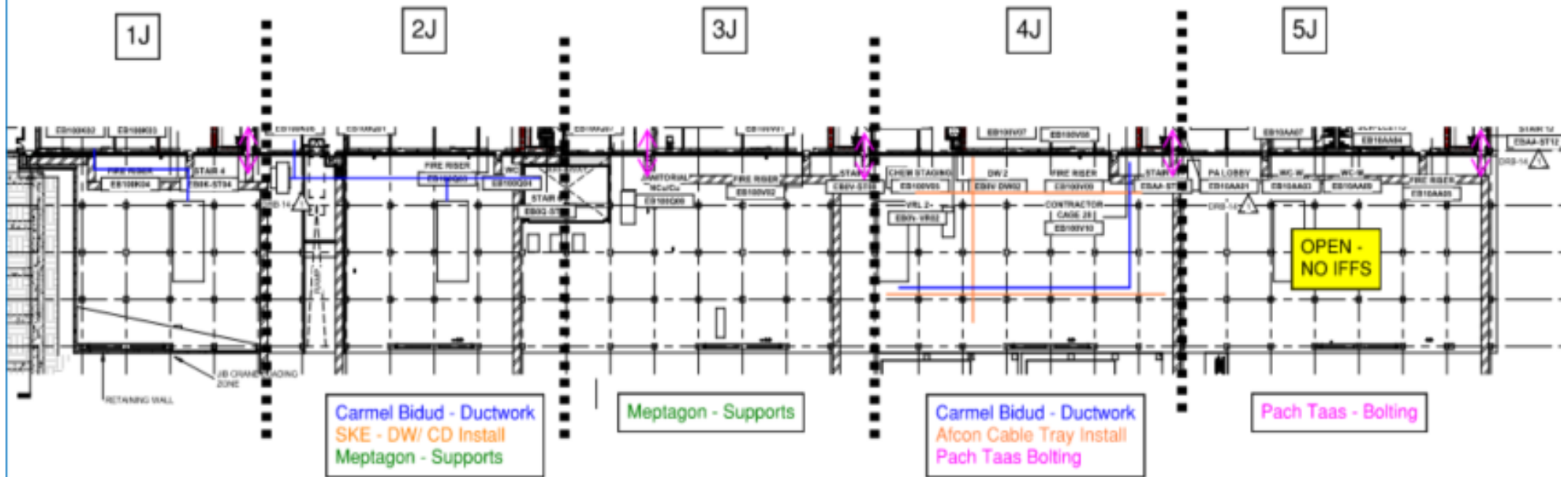




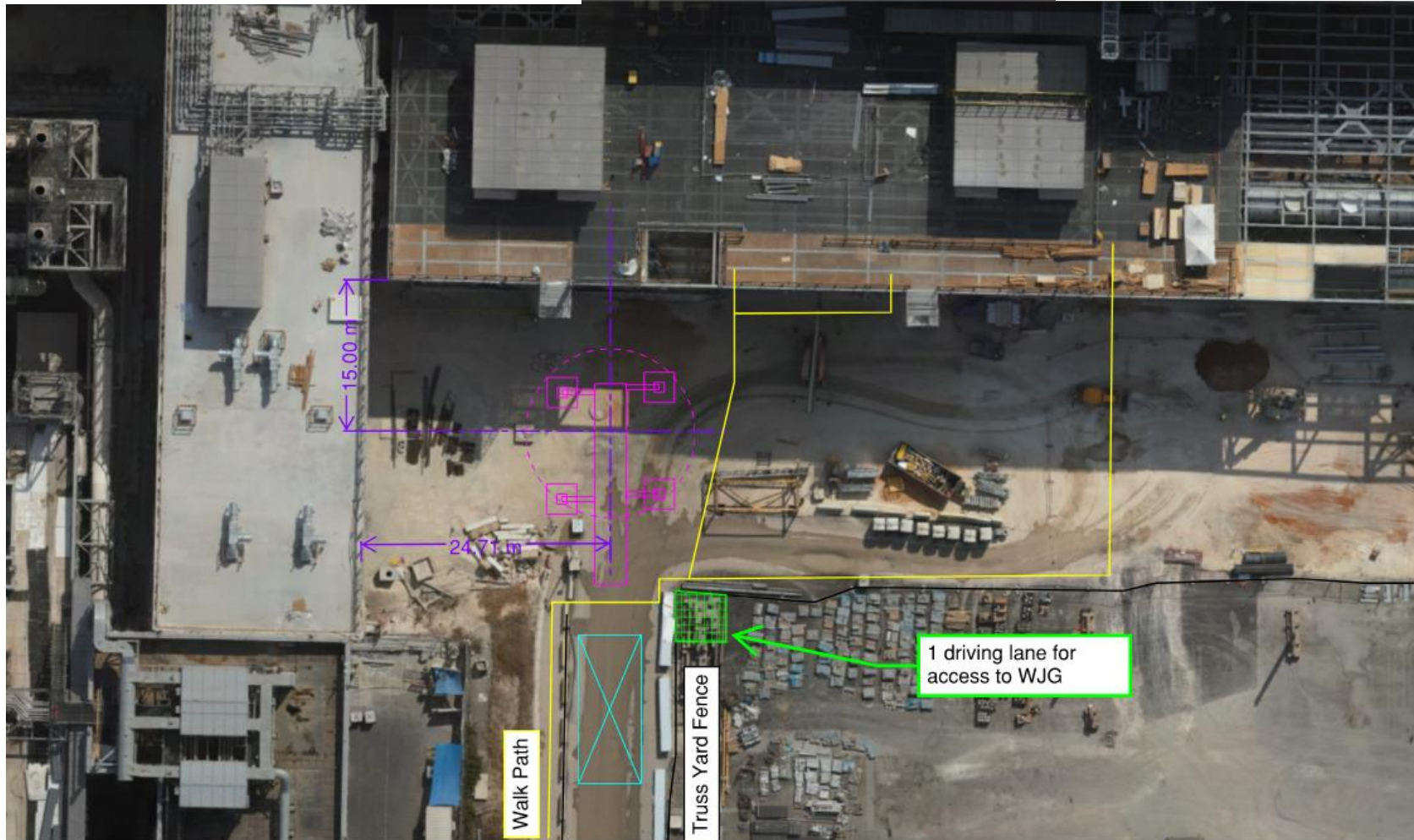


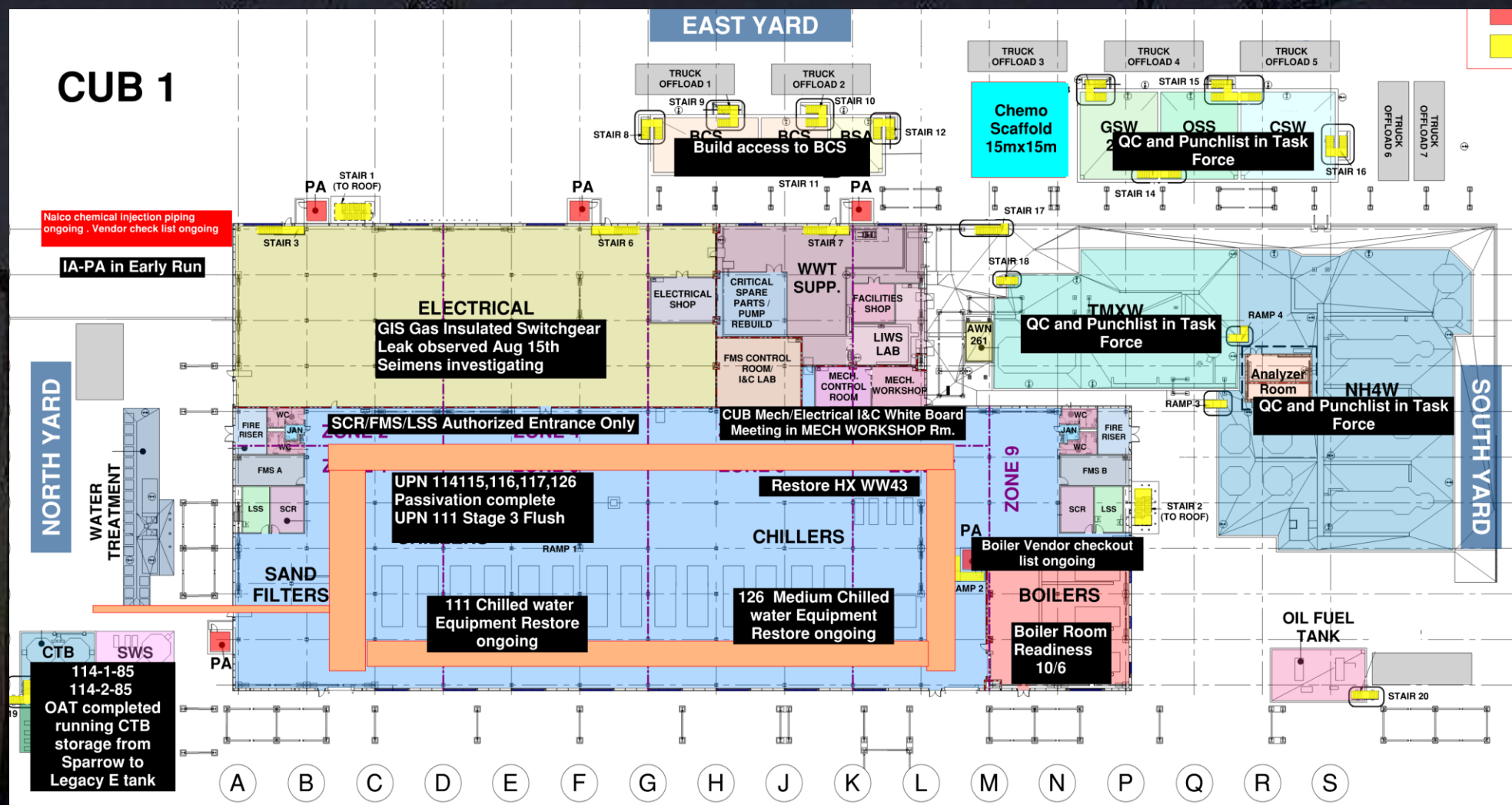


HOFFMAN CONSTRUCTION COMPANY

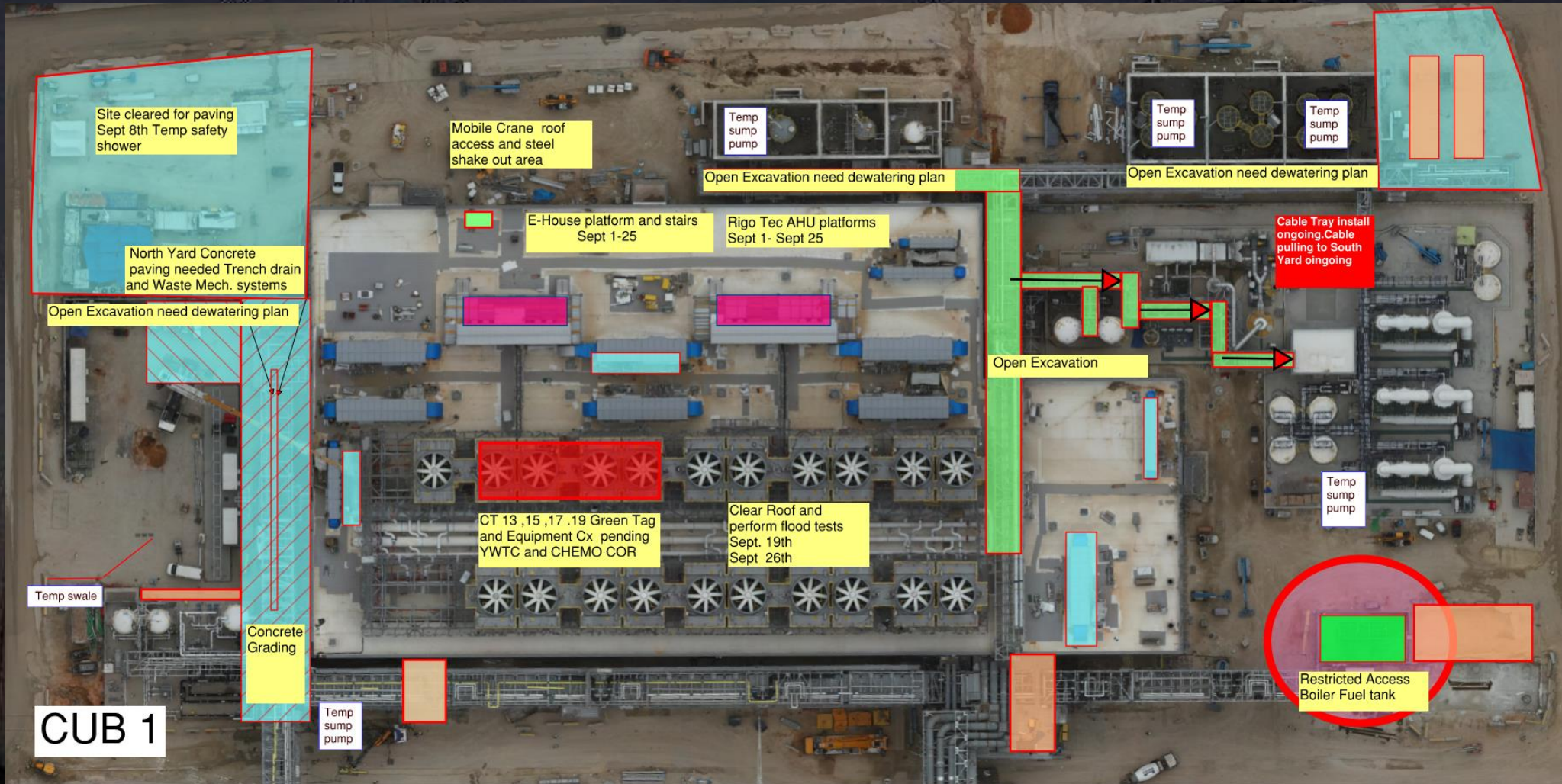




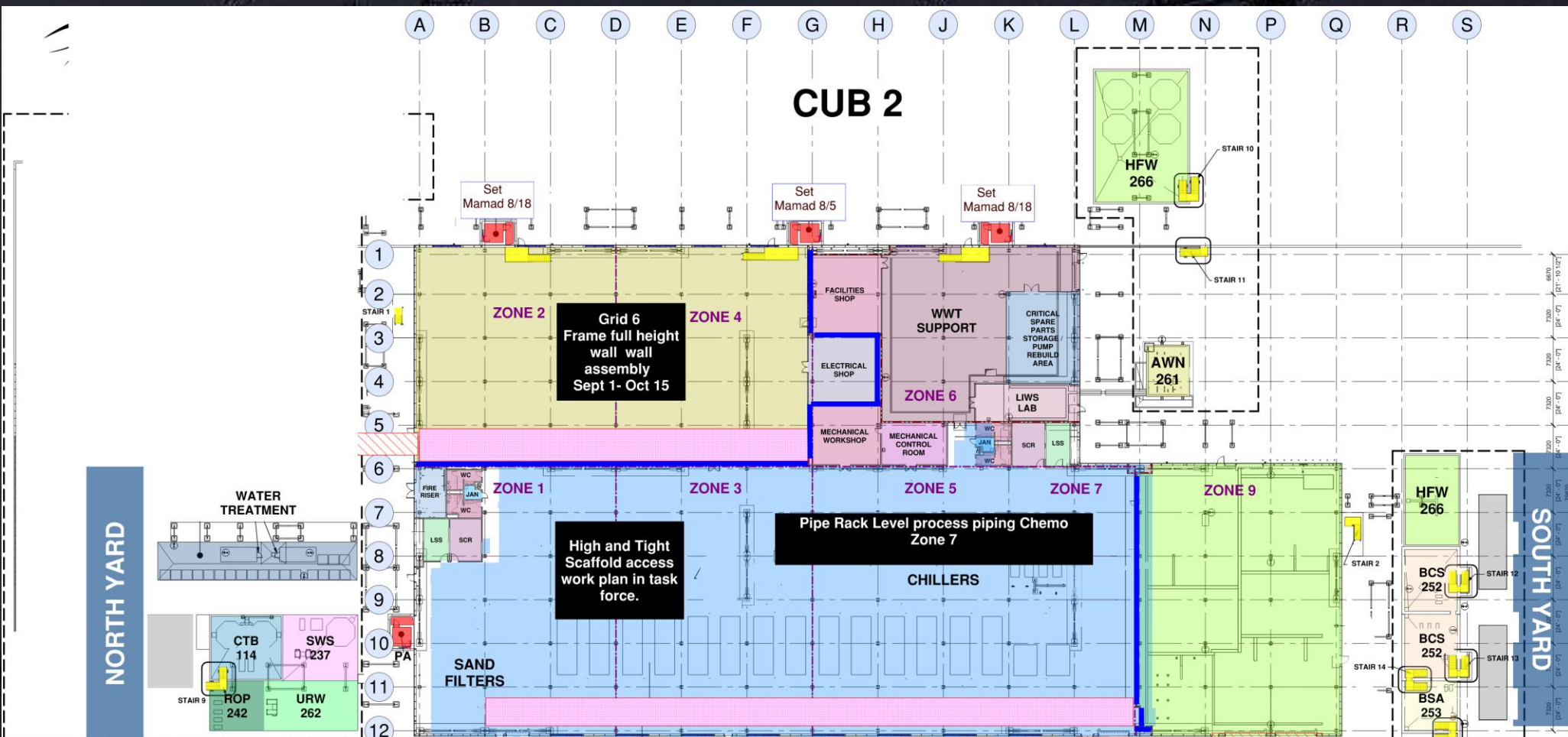




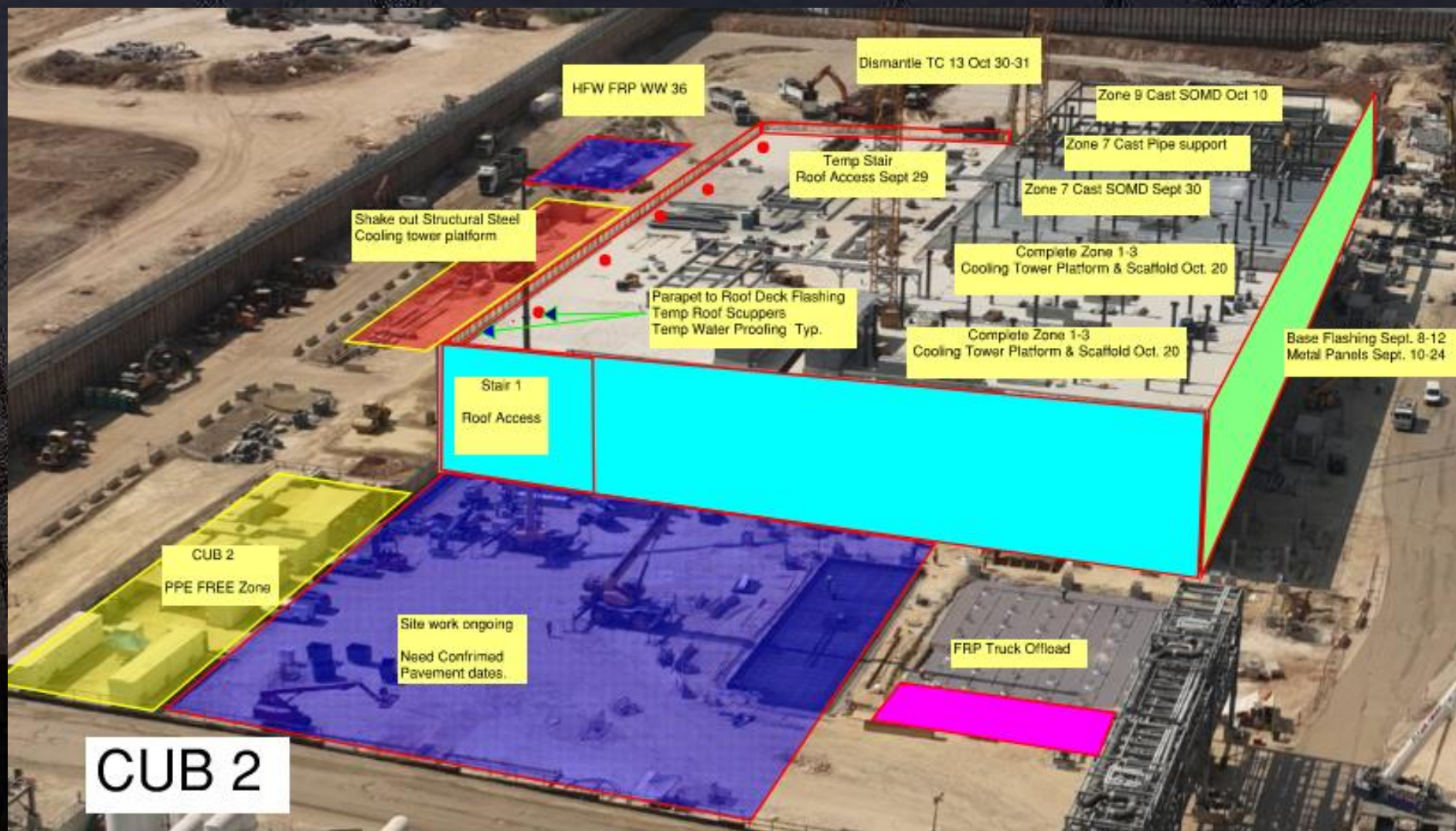
























**HOFFMAN CONSTRUCTION COMPANY**



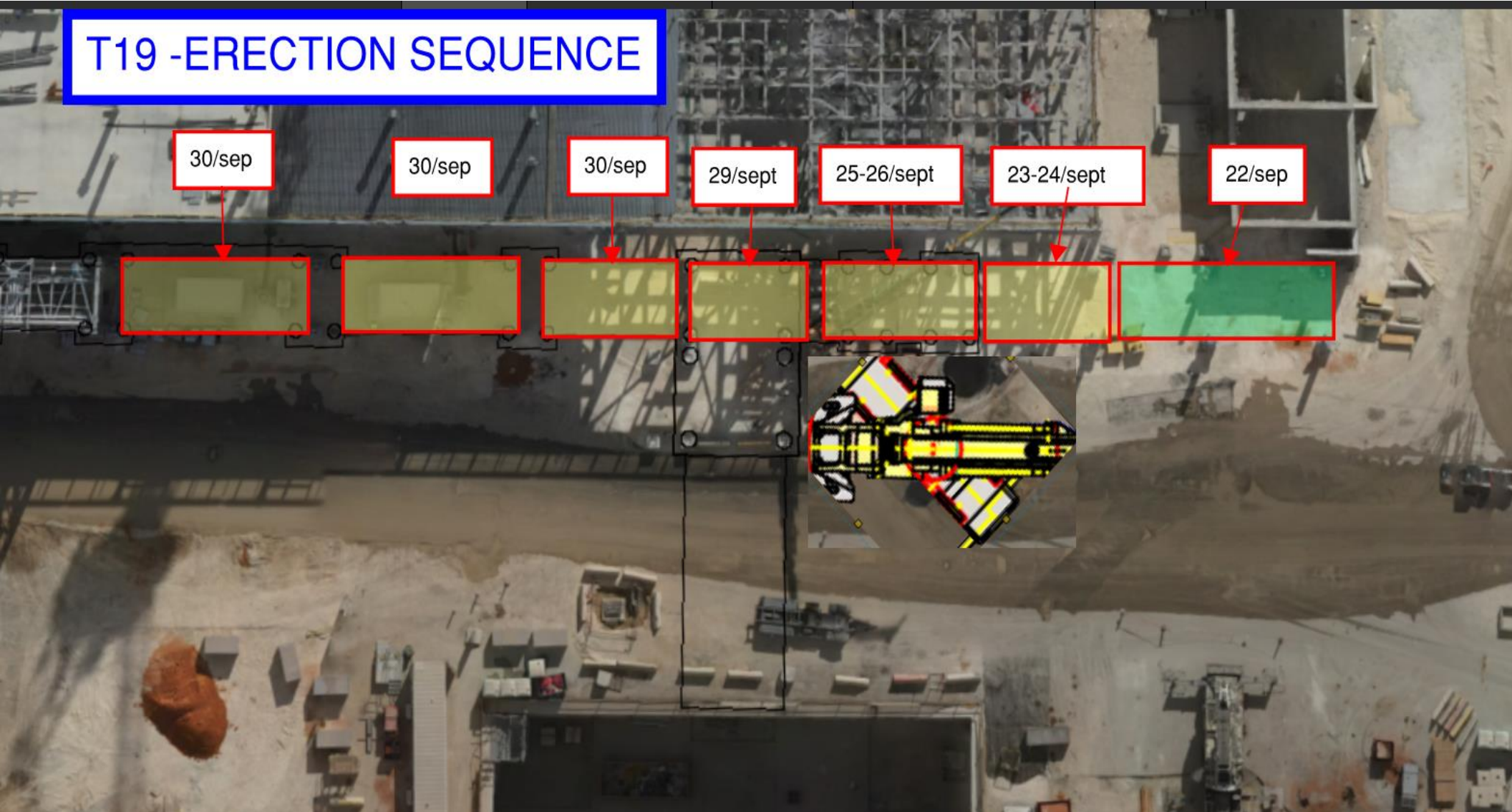
**HOFFMAN**  
Sparrow  

**NO PARKING OR MATERIAL STORAGE**

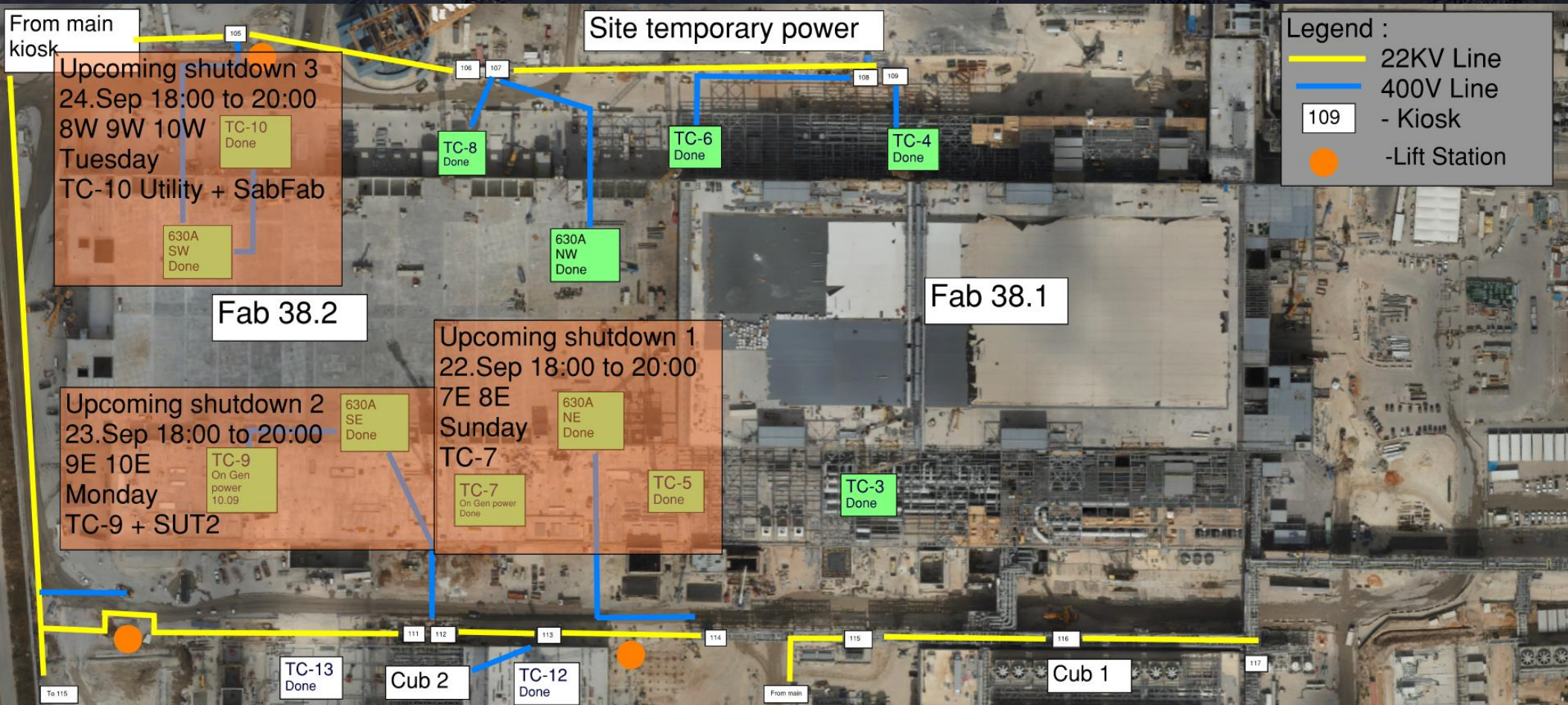
**BSGS**



## T19 -ERECTION SEQUENCE









# Daily Coordination Meeting

Site Logistics  
North Gate B







# Daily Coordination Meeting

## Site Logistics

### North

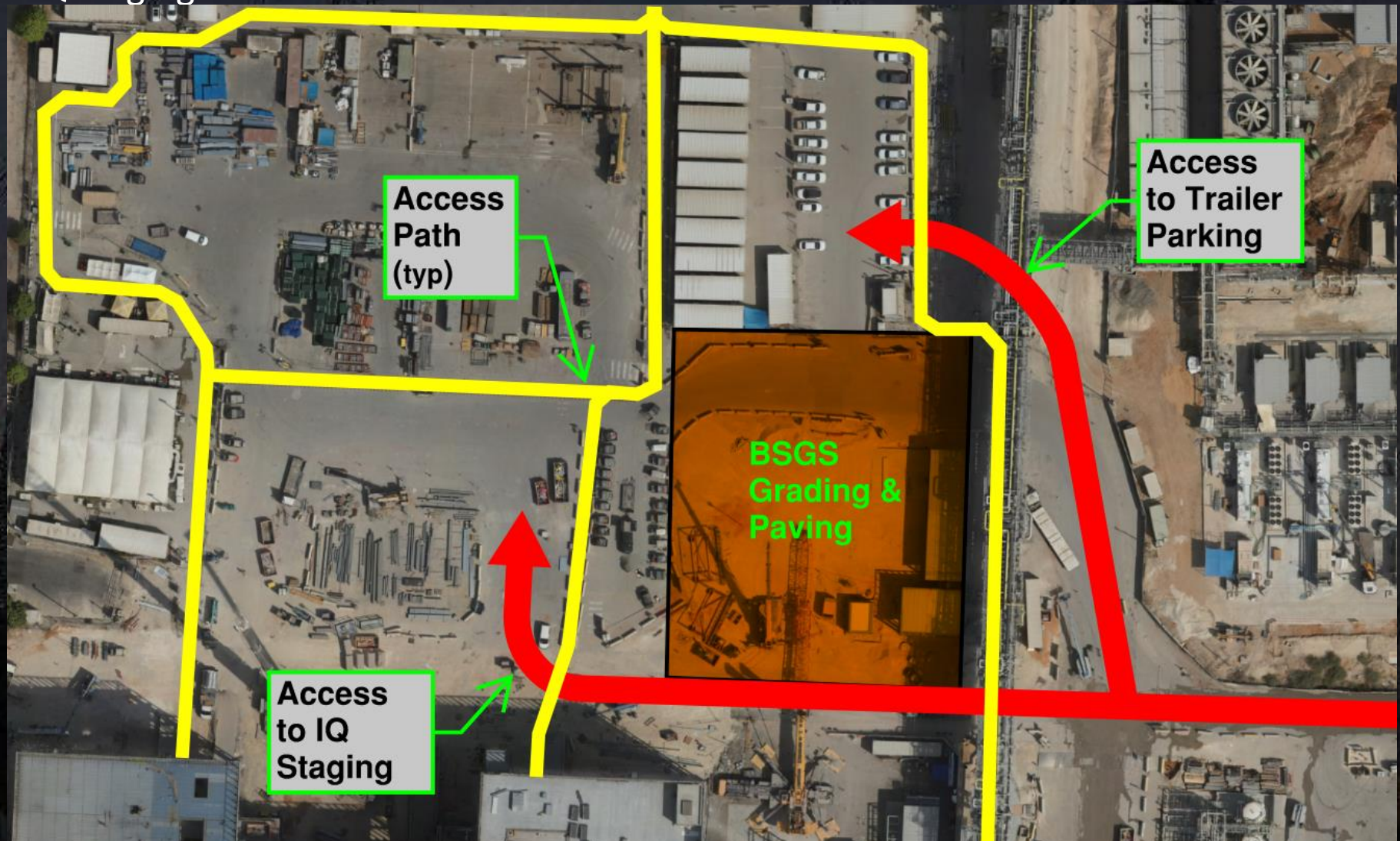




# Daily Coordination Meeting

## Site Logistics

### North IQ Staging Access

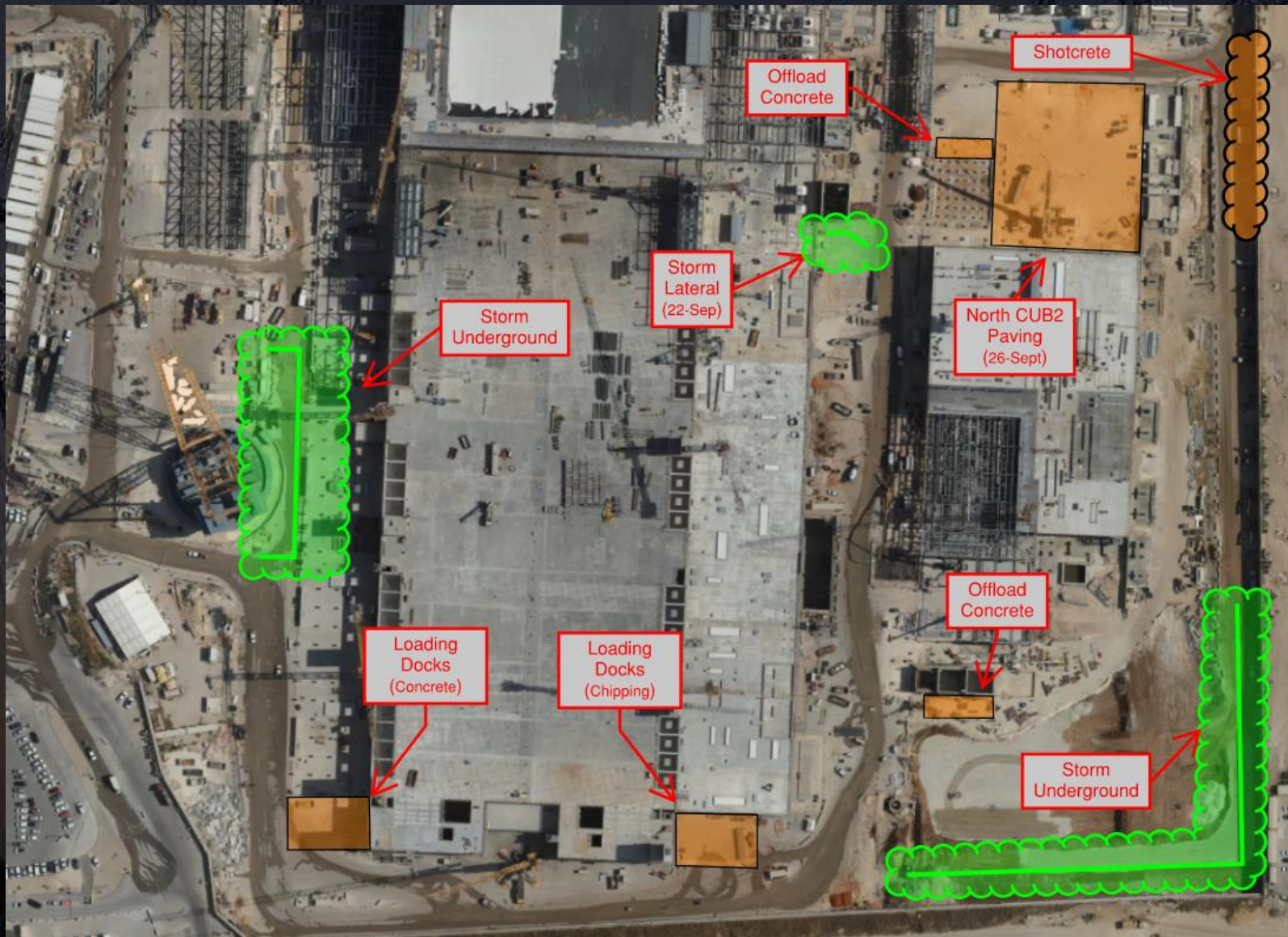




# Daily Coordination Meeting

## Site Logistics

### South





# Accountability and Safety

- What is accountability? By definition, it is an obligation or willingness to accept responsibility for actions, decisions, policies, etc.
- How does accountability affect safety?
- There is personal accountability, this is the responsibility that one has to themselves and their safety to follow the rules, ask questions, speak up when they see something that could harm them.
- Then there is the accountability that our team leaders should have for ensuring their crews have the knowledge to perform their work safely, and as a supervisor they are making sure that the work is being done safely.
- Then there is the accountability of the upper management. This is the responsibility to ensure that we have the right tools, training, equipment, plans, etc. so that our crews can work safely.
- When we are seeing an unsafe action or condition, we need to ask ourselves what we could do to ensure that the behavior or condition is fixed- then ask the team leader what they should be doing- and lastly the employee. Without all 3 parties having the proper accountability we are inviting incidents to occur.
- Too often we start with the worker and then move our way up the chain of command. Hold yourselves and your team leaders accountable for unsafe behaviors and conditions.

# Daily Coordination Meeting



14:00 Sign In