

Daily Coordination Meeting





Daily Coordination Meeting

General Topics:

- **MEWP Approvals; Thank you**
- **Whiteboard for work after 17:00**
- **Tuesday 29 April Normal work day**
- **Wednesday 30 April Gates close at 12:00**
- **Thursday-Saturday 01 May- 03 May Site Closed**
- **Gates Re-open Sunday 04 May and MSM at 07:00**



HOFFMAN CONSTRUCTION COMPANY

UTILITY LEVEL MOD1

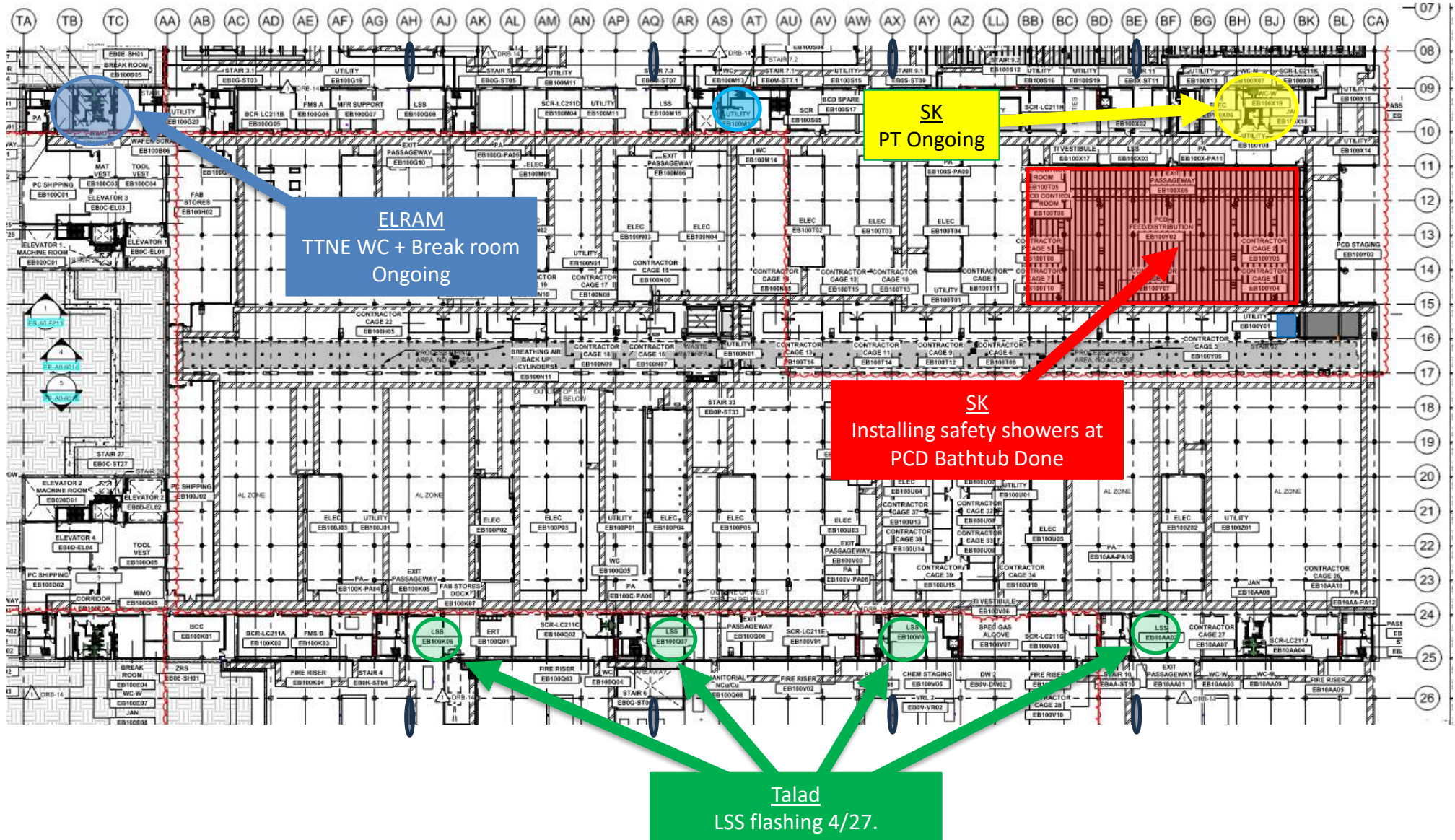


FAB Subs Meeting
SUT/UL/Skin

Subcontractors meeting is back
Every **MONDAY** 9:30 to 10:30

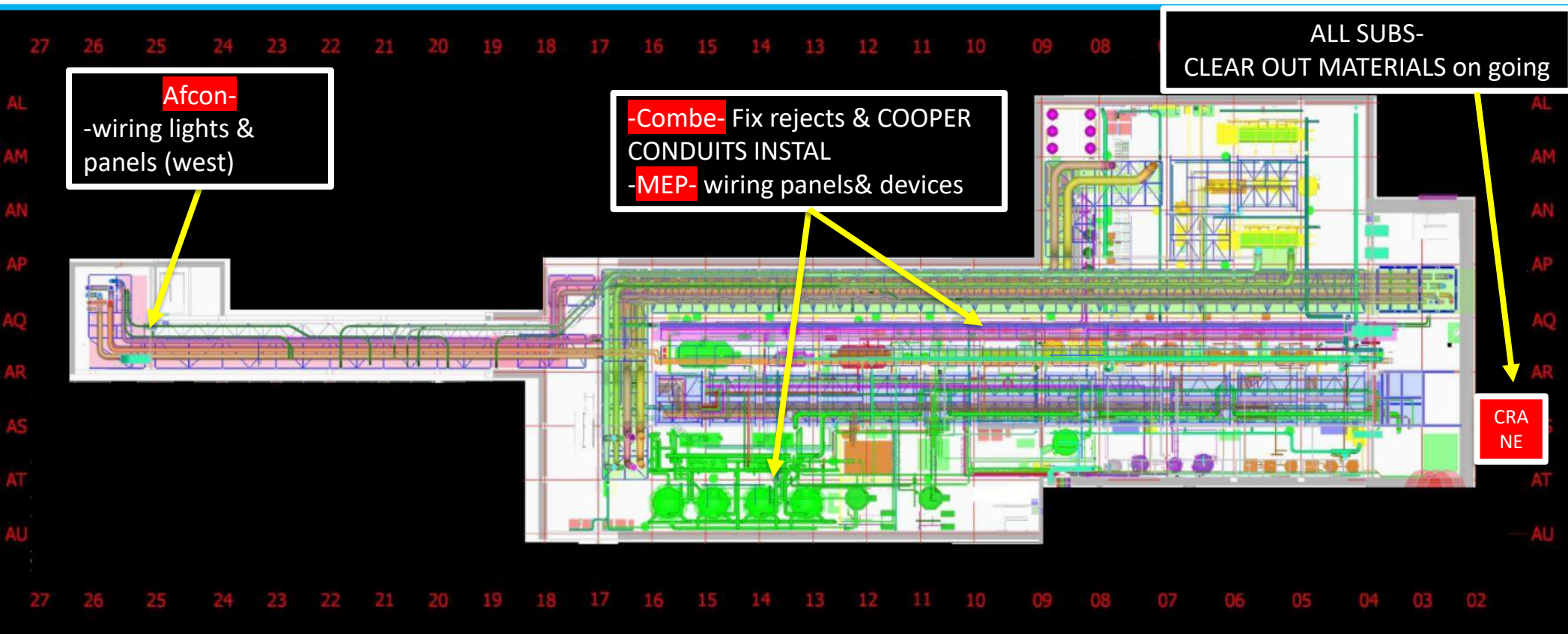


UTILITY LEVEL MOD1





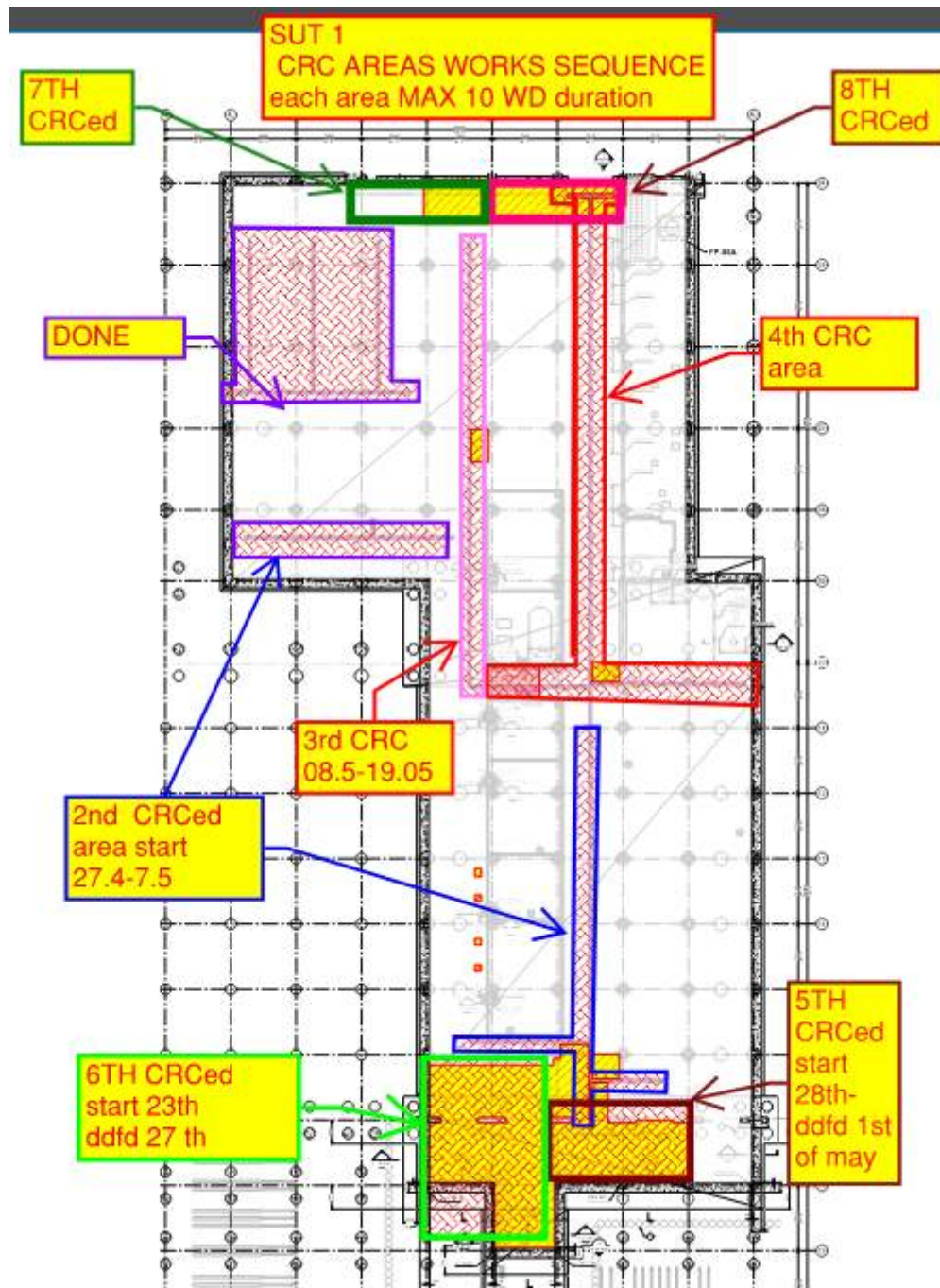
SUT 38.1 LEVEL



UNRECOGNIZED MATERIALS & TOOLS
PLEASE LOOK AT THESE MATERIALS& TOOLS OR GO LOOK AT
MATERIALS& TOOLS SHOUD CLEAR OUT TILL 06.05.25
AT 07.06.25 JOB SERVICE WILL THRU IT TO DUMPSTER







sut 1 CRC sequence & duration

Area No	start date	completion date
1		done
2	27.4	7.5
3	8.5	19.5
4	19.5	29.5
5	23.4	27.4
6	28.4	1.5
7	1.6	3.6
8	4.6	8.6

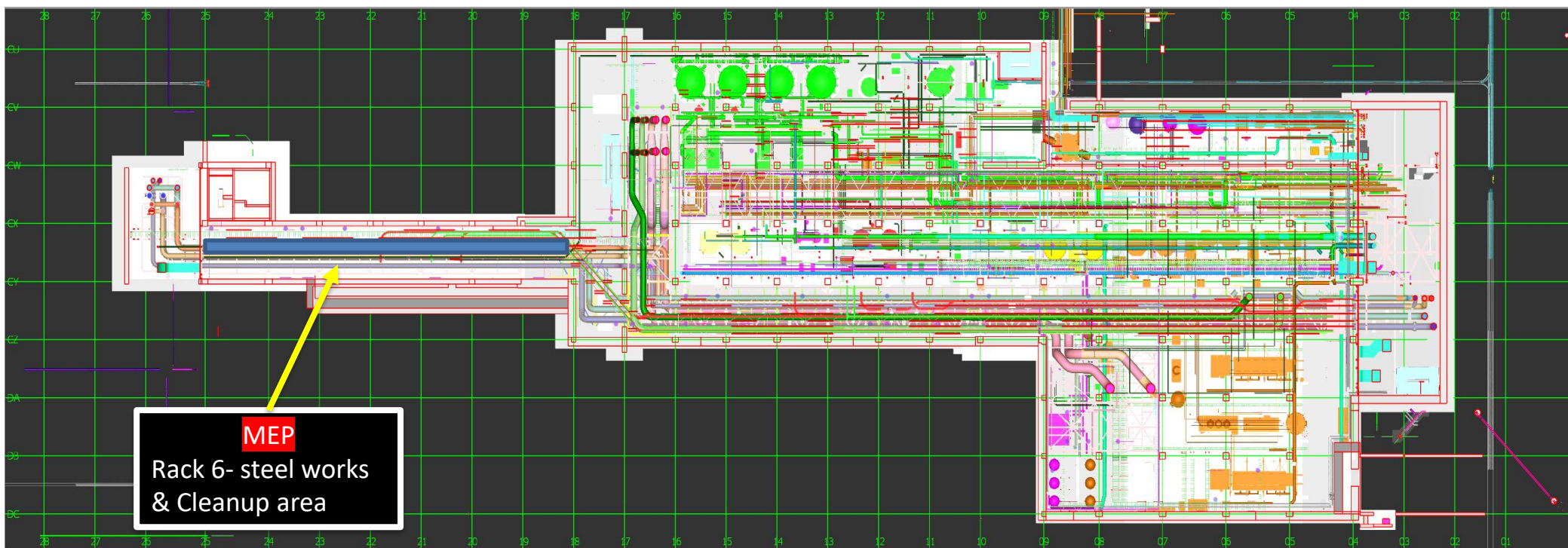
complete all crc works at sut 1
date is 08.06.2025



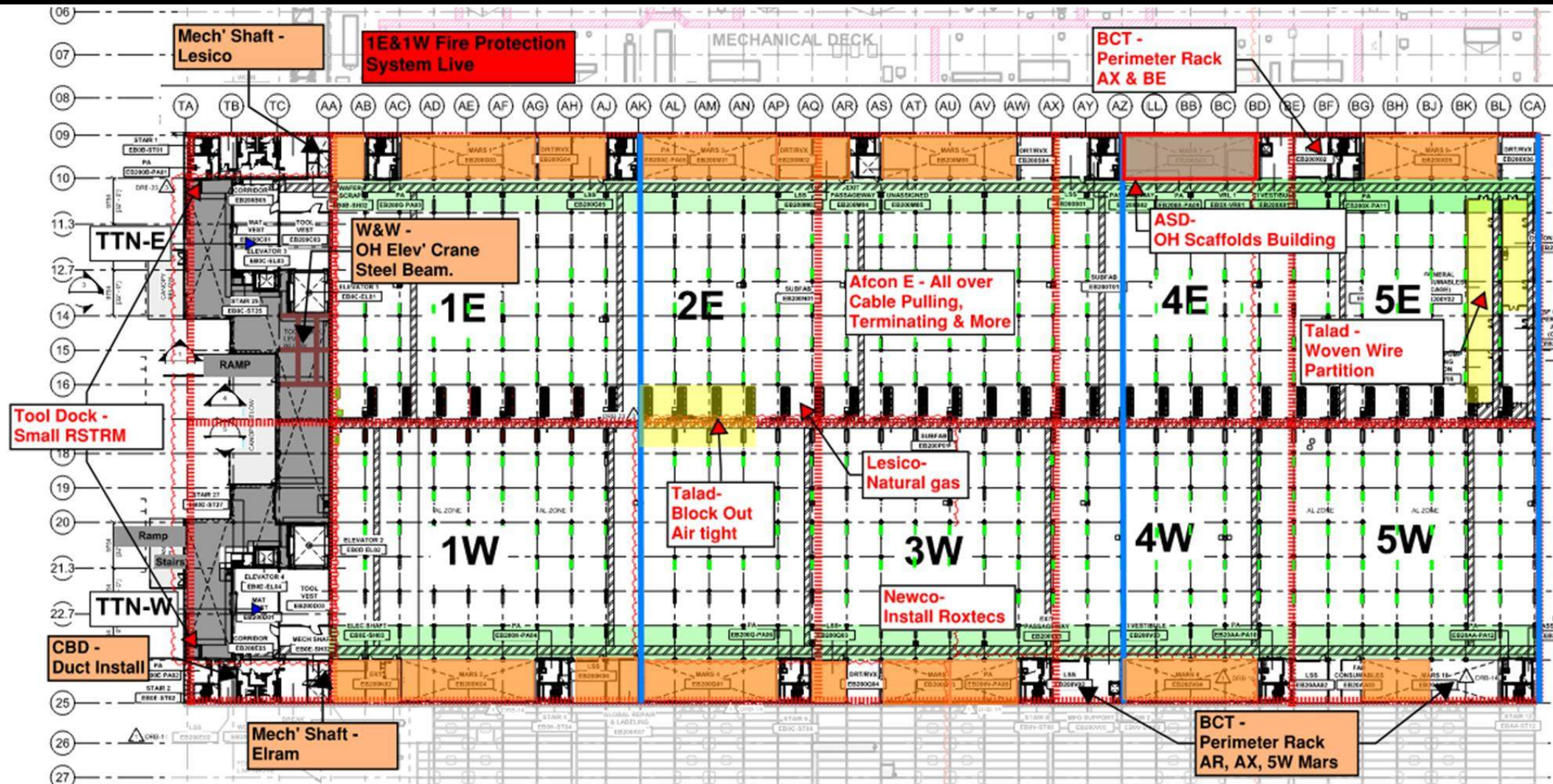
HYG

IMMEDIATELY GRID INSTALL for
each area after CRC completion

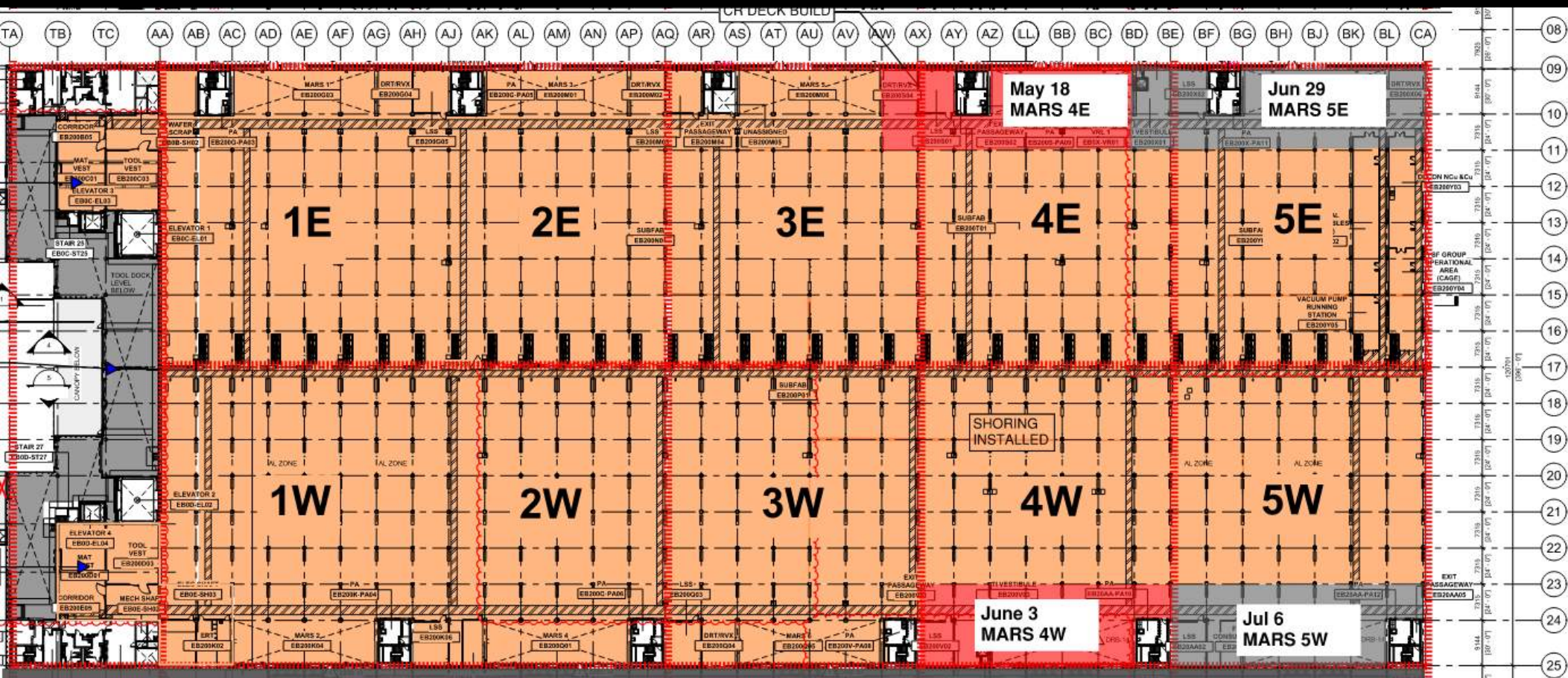
SUT 38.2 LEVEL

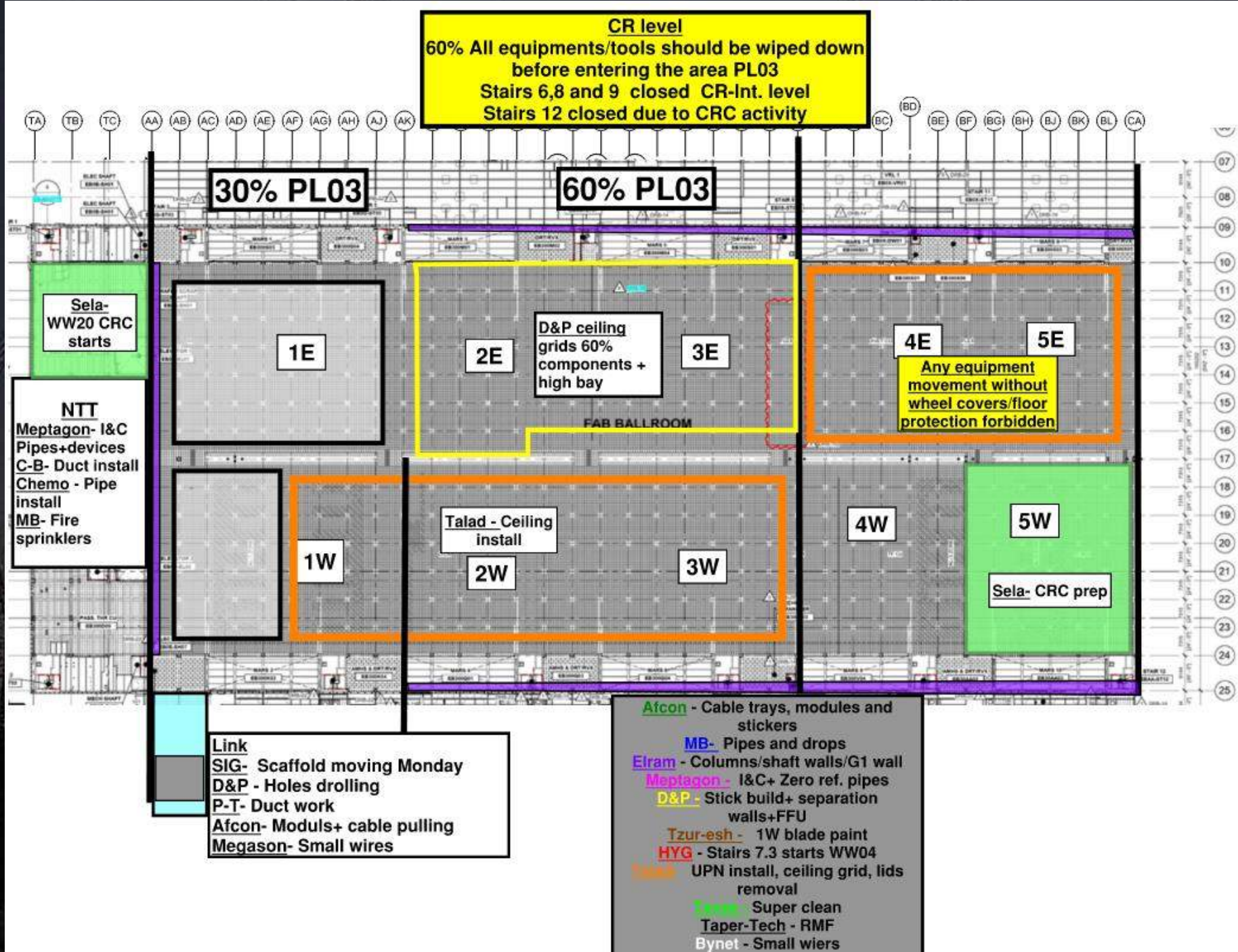
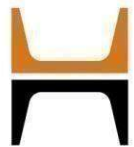


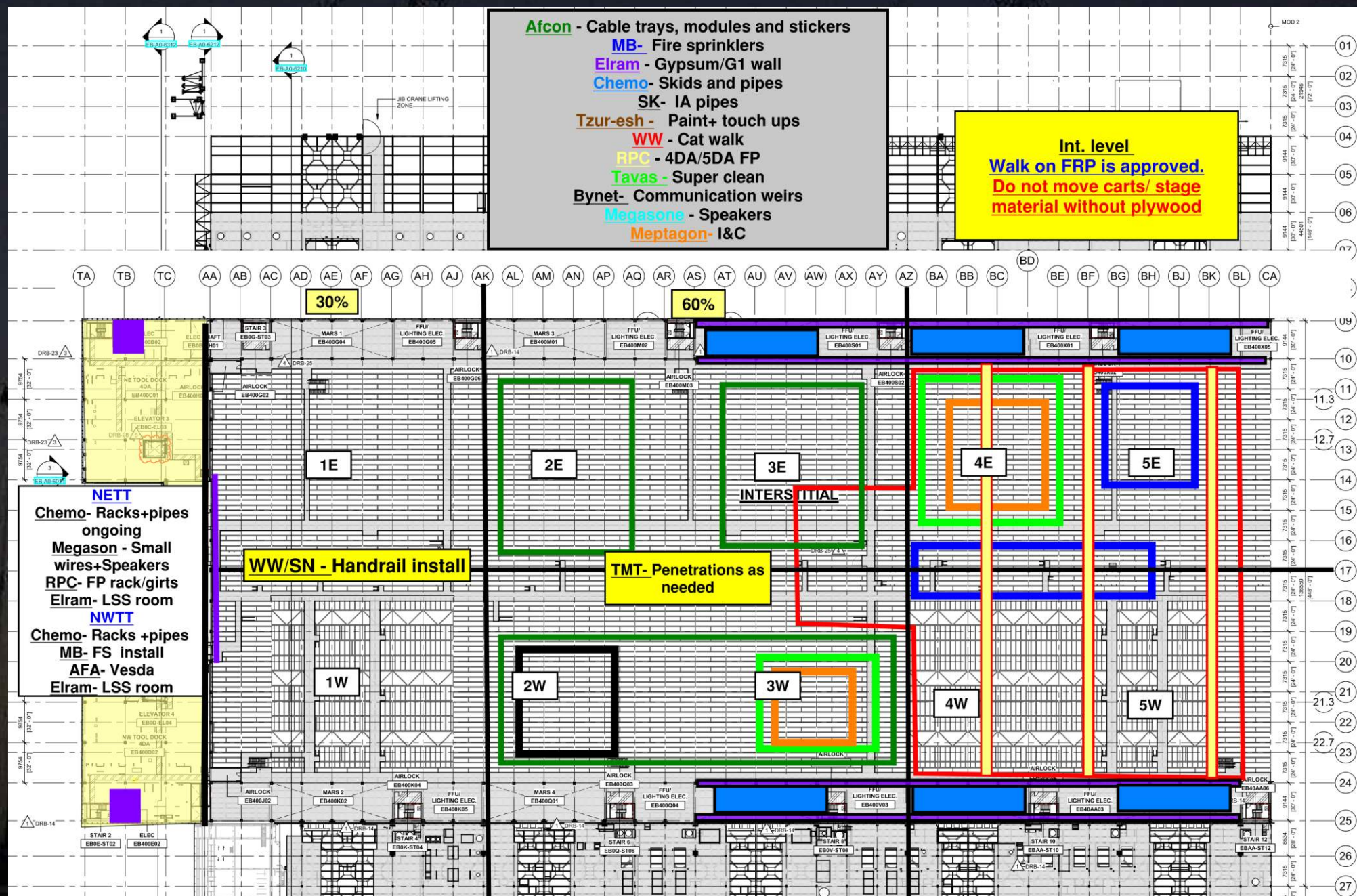
SUBFAB BUILDOUT MOD 1

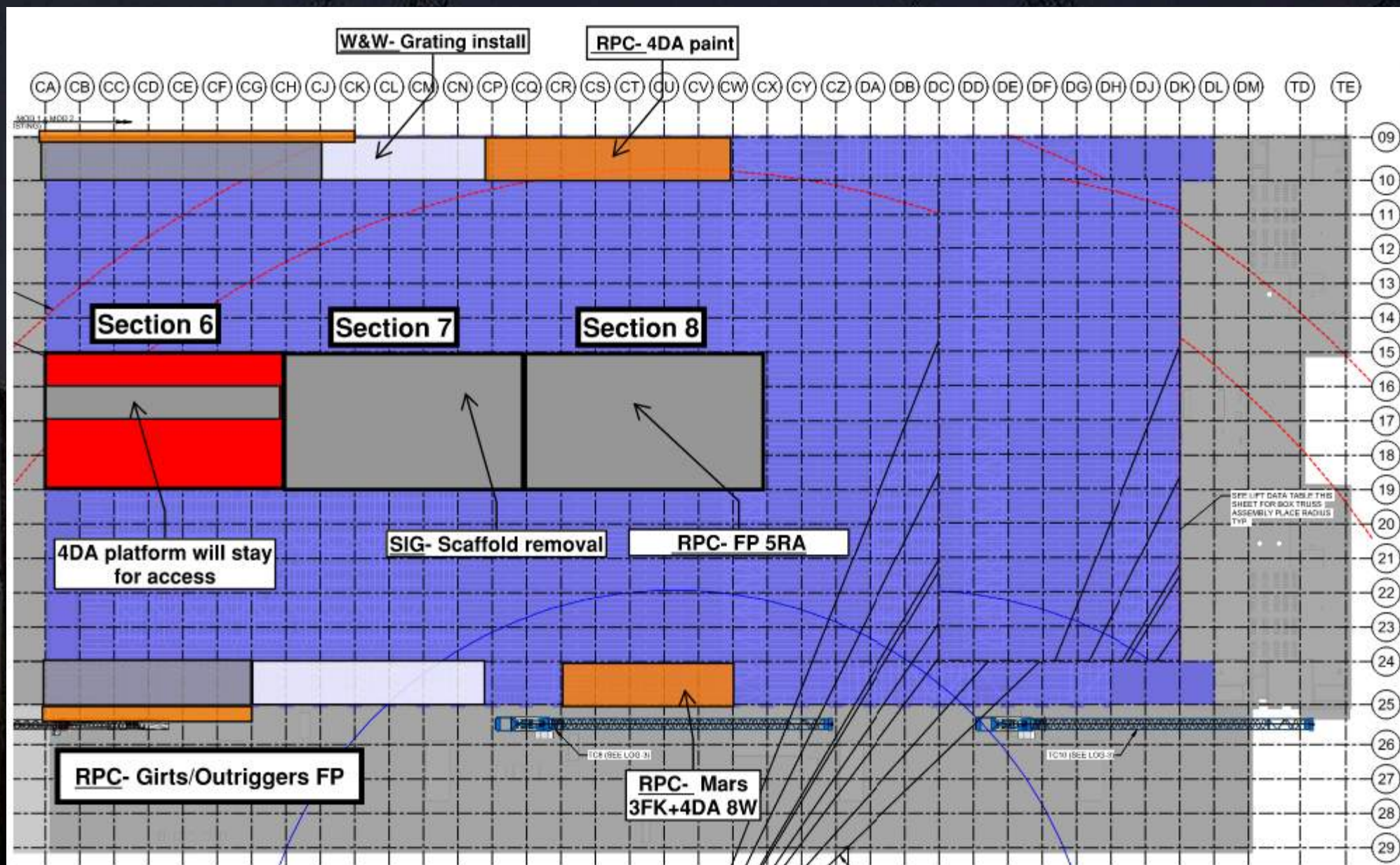
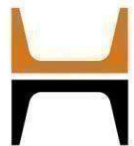


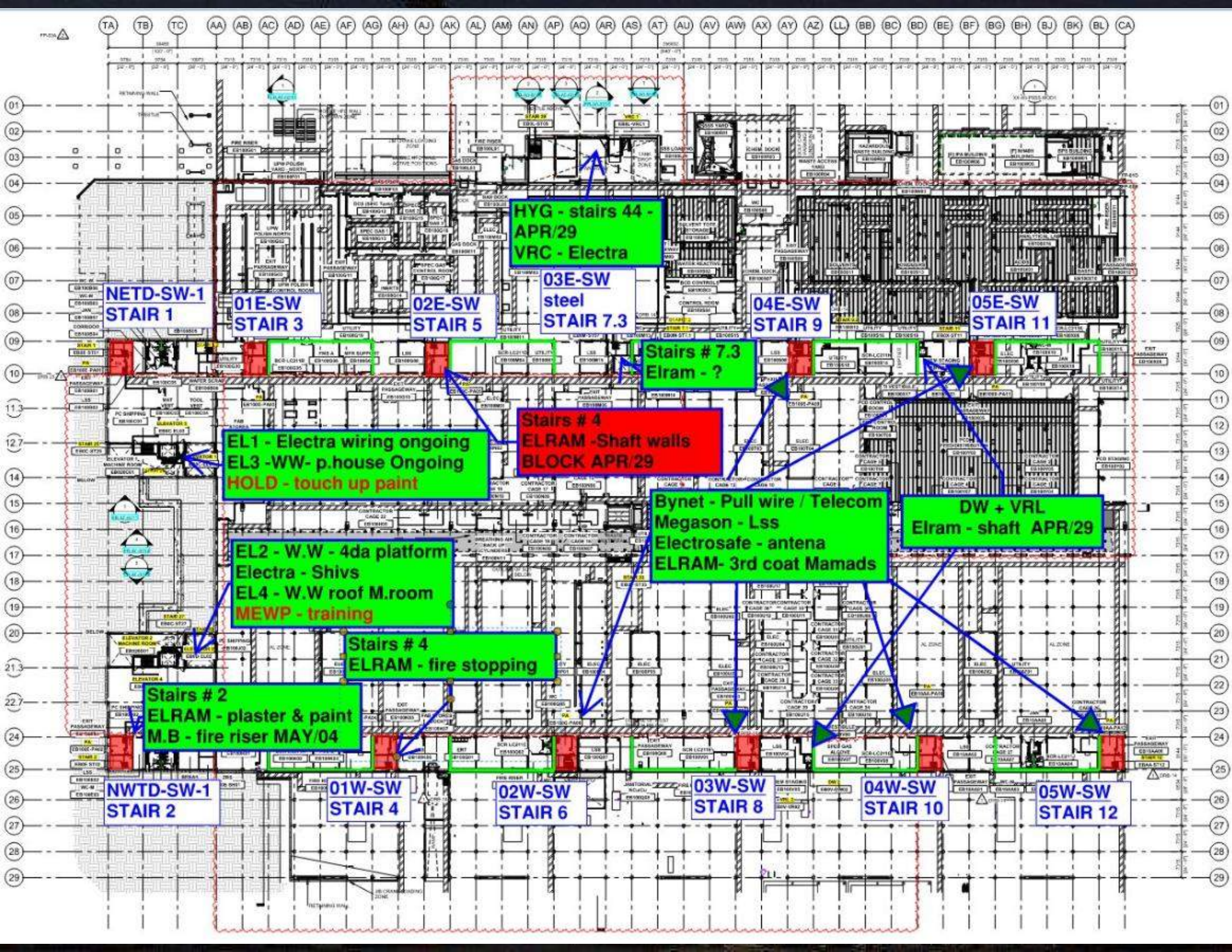
BCT Pressure Test Tomorrow



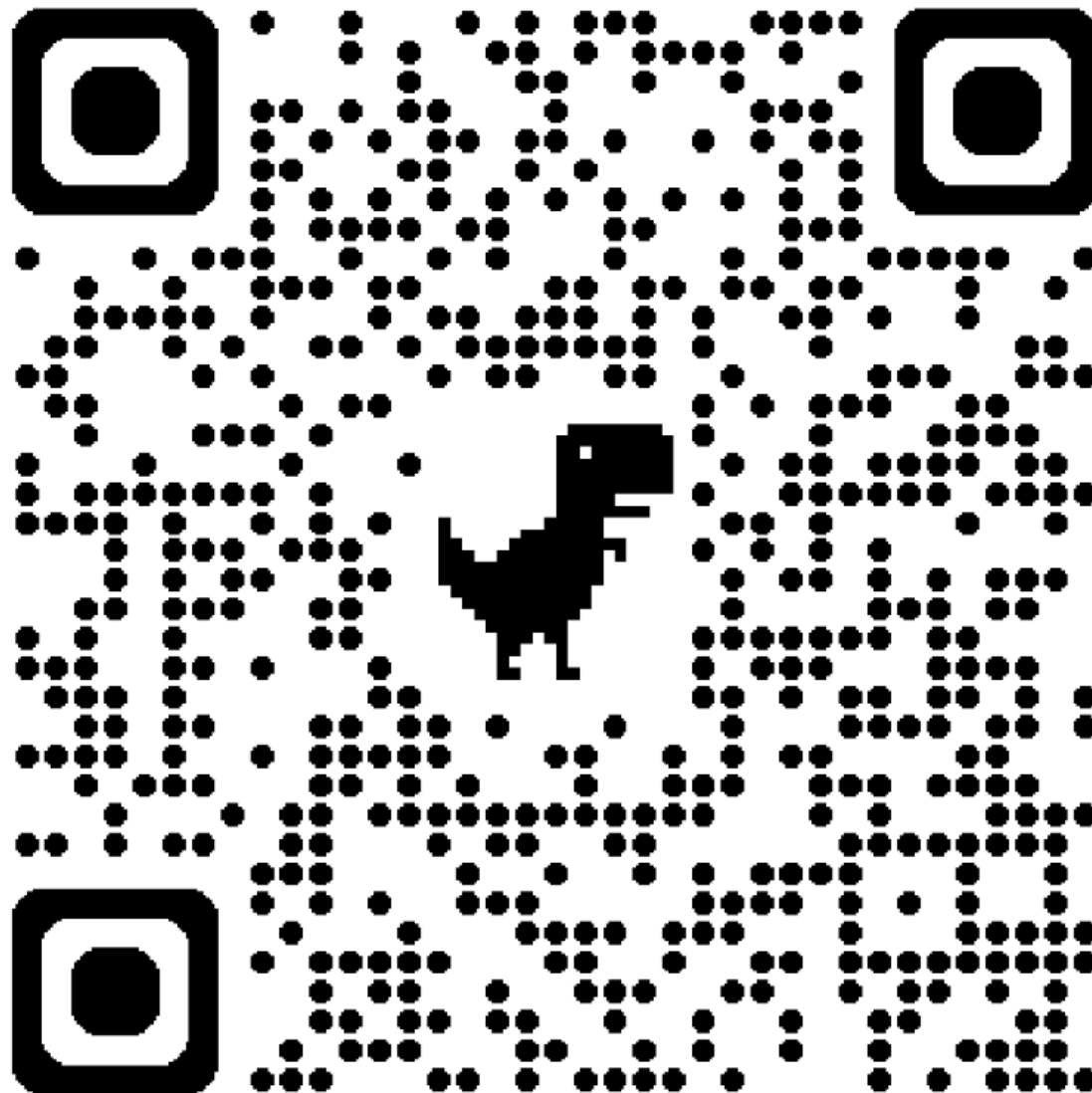




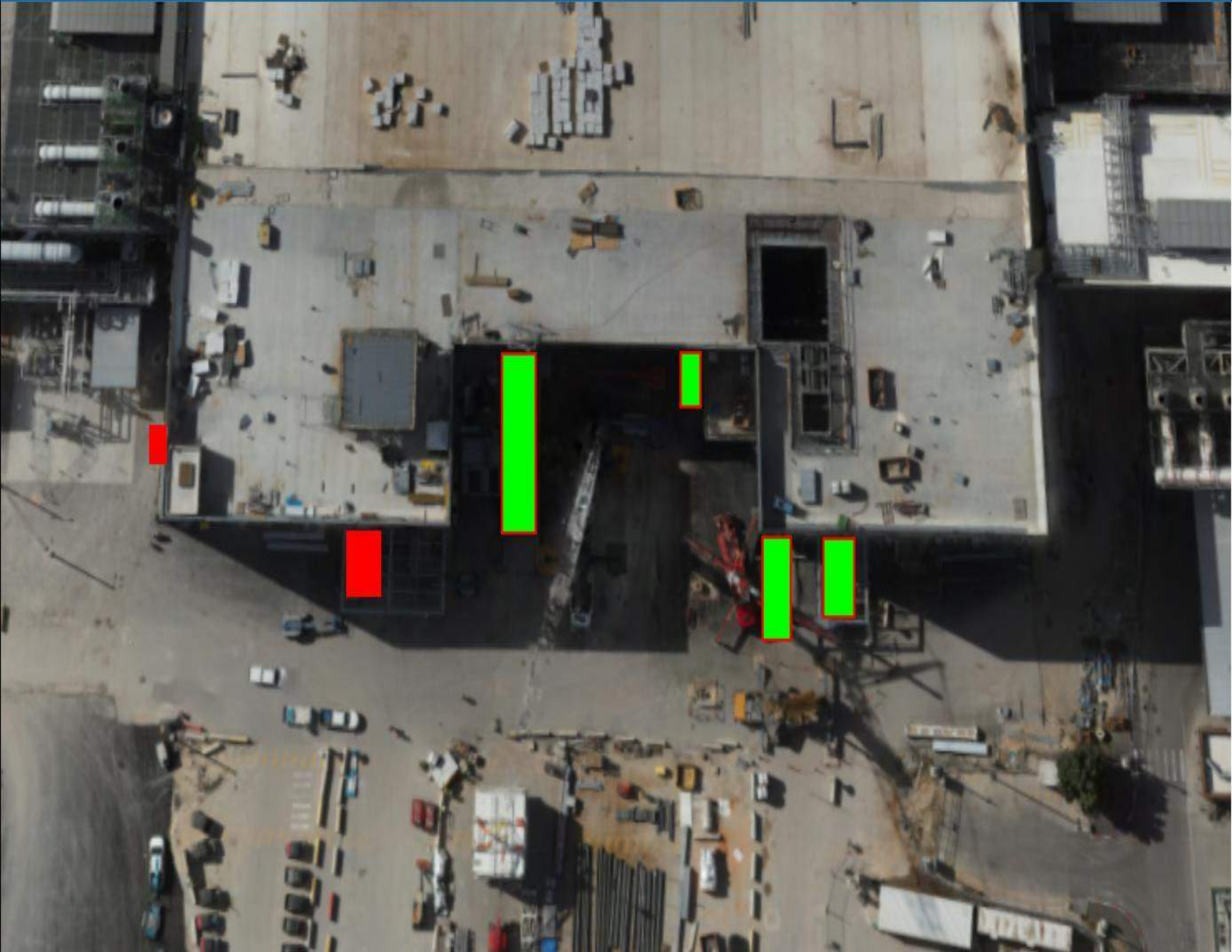




Request Form



Subcontractor must fill out and submit all required cells in order to get a penetration cut through the siding.




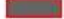






MOD 2 EASTSIDE GIRTS/SIDING

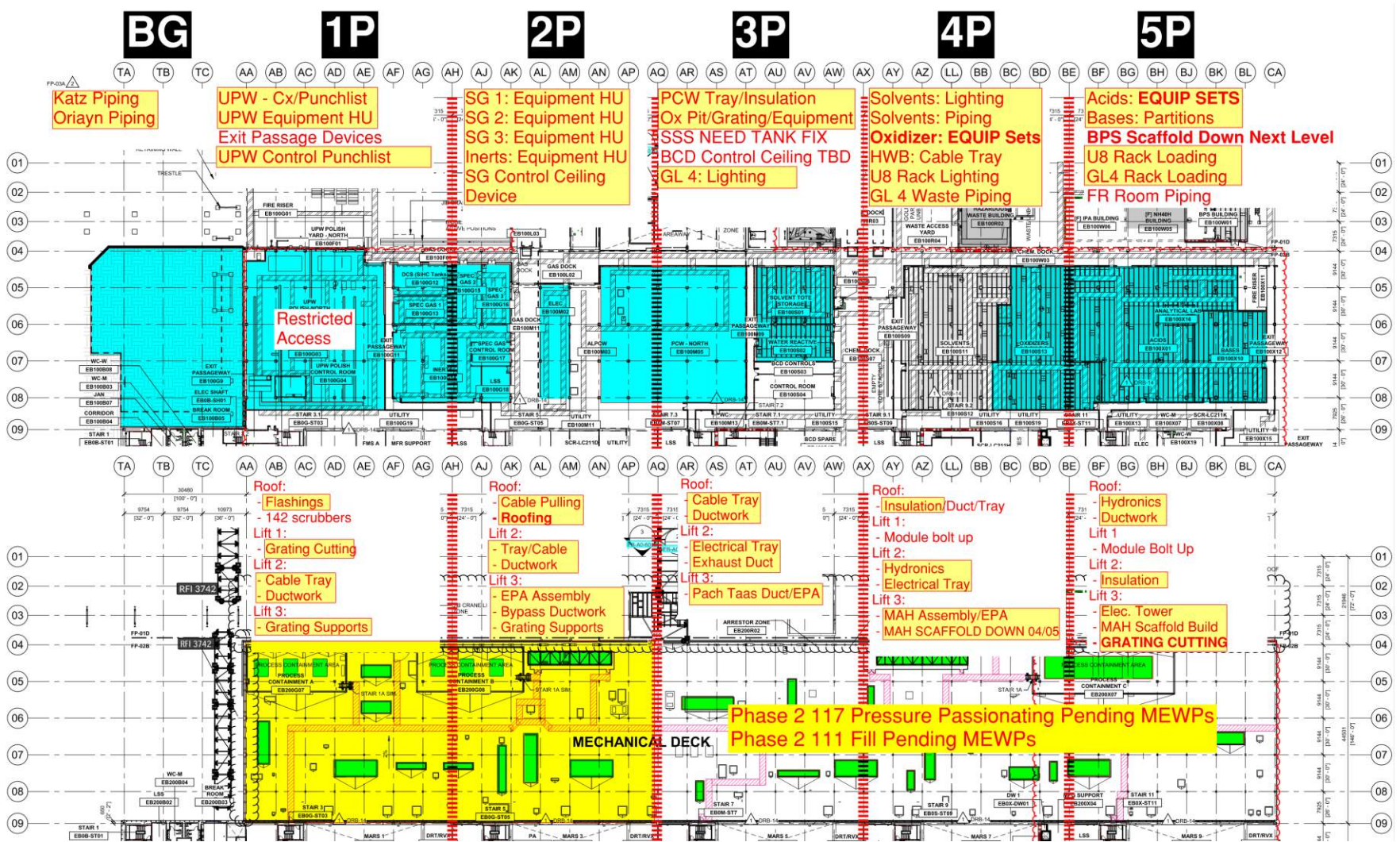
2752/ 2751	2742/ 2741	2732/ 2731	2722/ 2721	2712/ 2711	2552/ 2551	2542/ 2541	2532/ 2531	2522/ 2521	2512/ 2511	2502/ 2501
---------------	---------------	---------------	---------------	---------------	---------------	---------------	---------------	---------------	---------------	---------------

READY FOR GIRTS	
INSTALLING GIRTS	
READY FOR PANELS	
PANELS INSTALLED	

PSSS.1

Utility Level 1YA

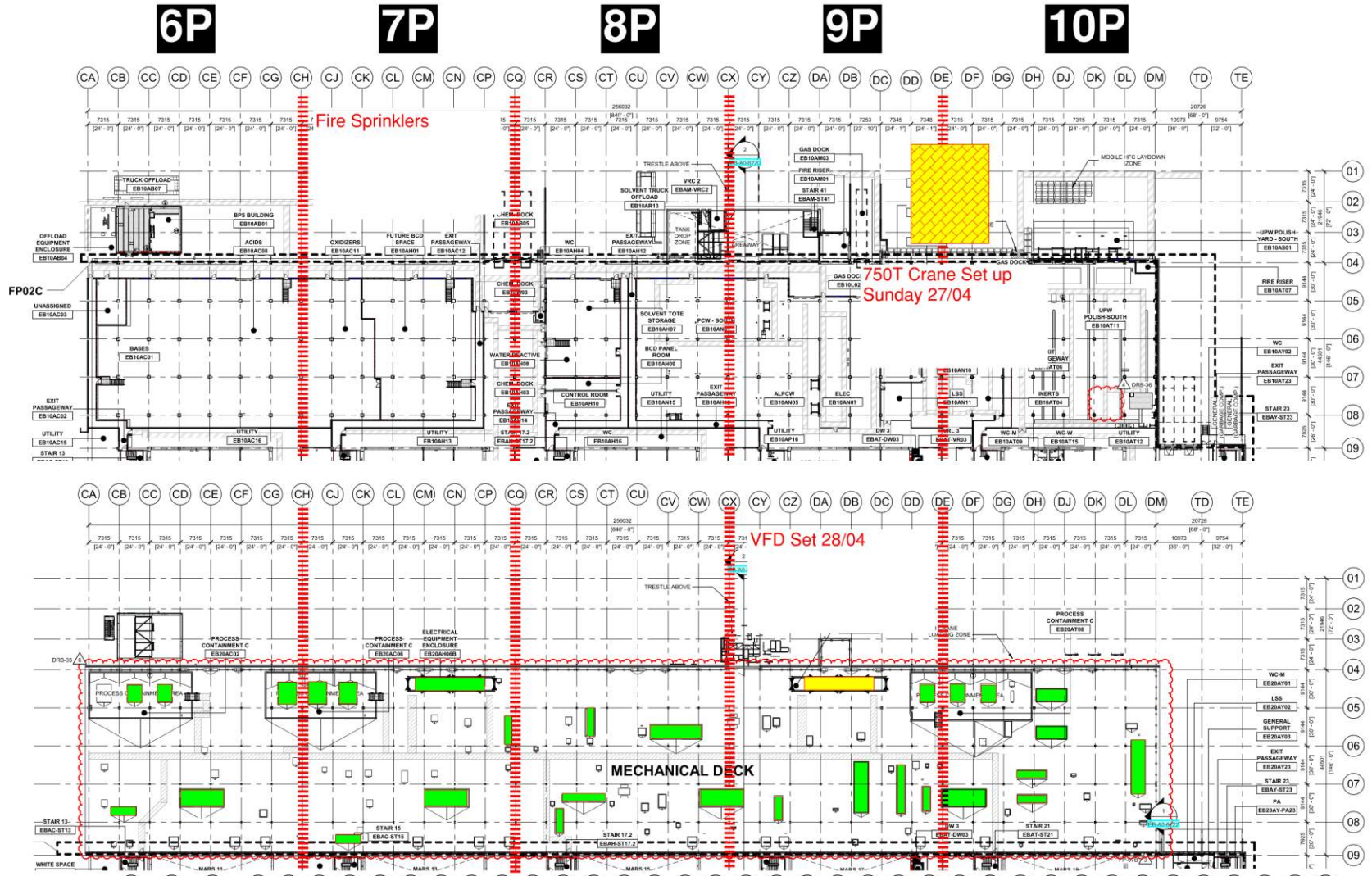
PSSS Roof 2SA



PSSS.2

Utility Level 1YA

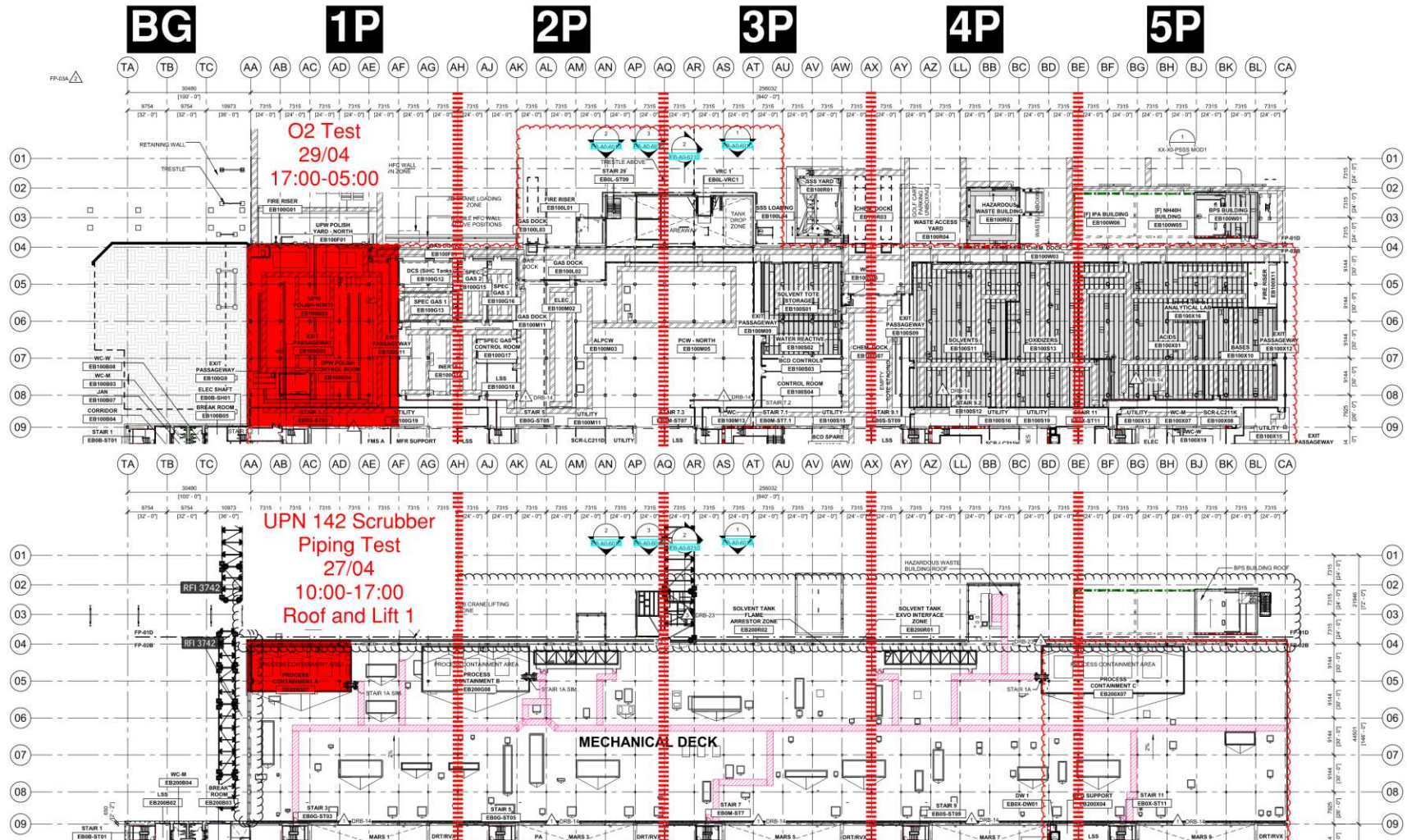
PSSS Roof 2SA



PSSS Pressure Tests

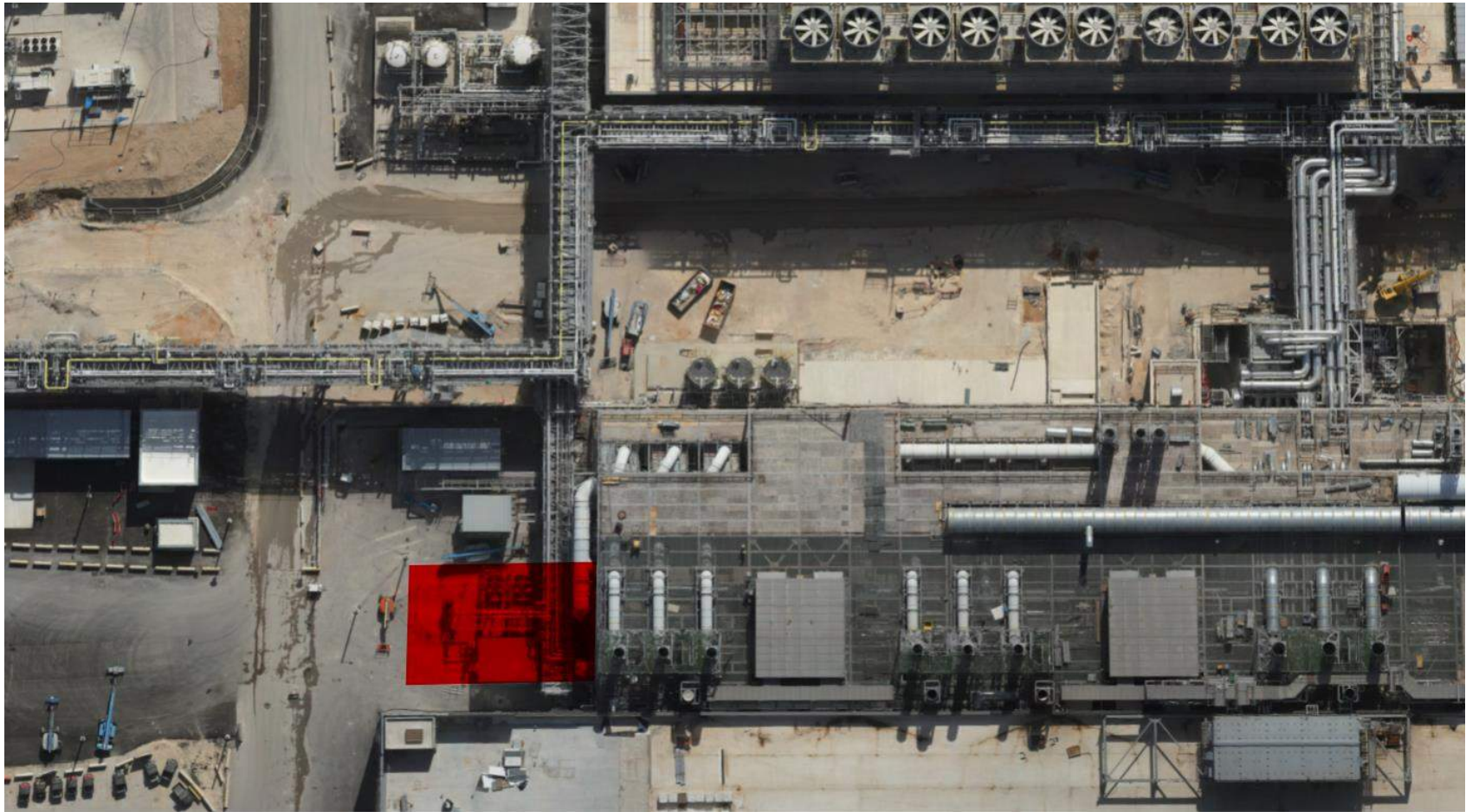
Utility Level
1YA

PSSS Roof
2SA



BGY GN2 Purging

21st-27th
continuous
noise
BGY West
Canopy
Closed



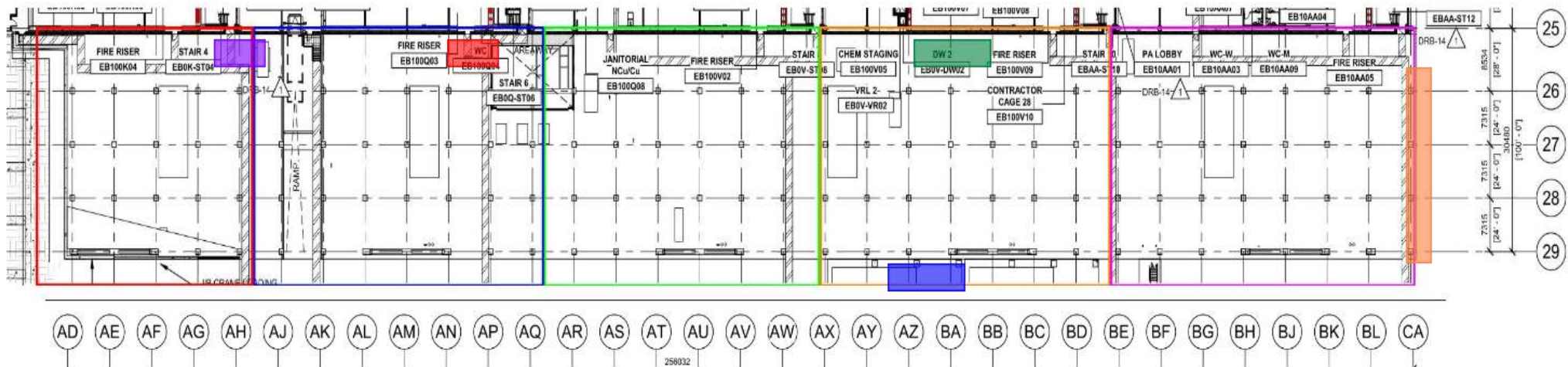
WJG – UL

* Carmel Bidud - erection of scaffold for flashing measurements and installation.

* A.A. scaffold - scaffold for MB is yellow tag. it's go time!

* Carmel Bidud - performing measurements for flashing

W&W - finalizing connections to MOD2 on CA line

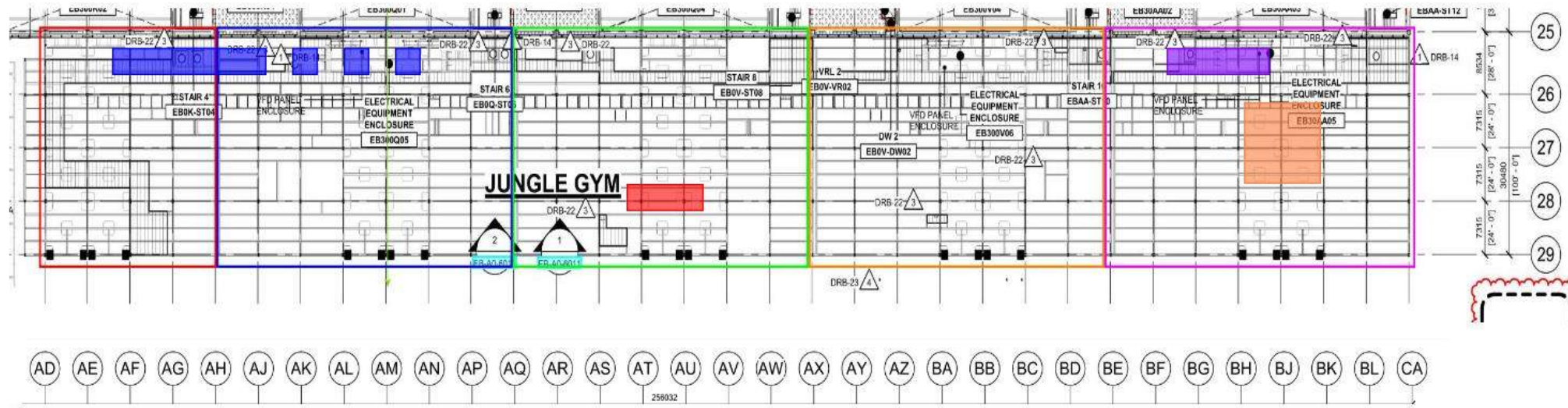


WJG – Lift 2

* Taper tech - fixing planking after stiffeners installation


* Pach Taas - misc work and punch list

* SK - working on connections to MAH
* Afcon - installation of cable tray underneath MAH



	* SN - installing and welding penetrations supports	* SN - handrails installation		
--	---	-------------------------------	--	--





closed work area

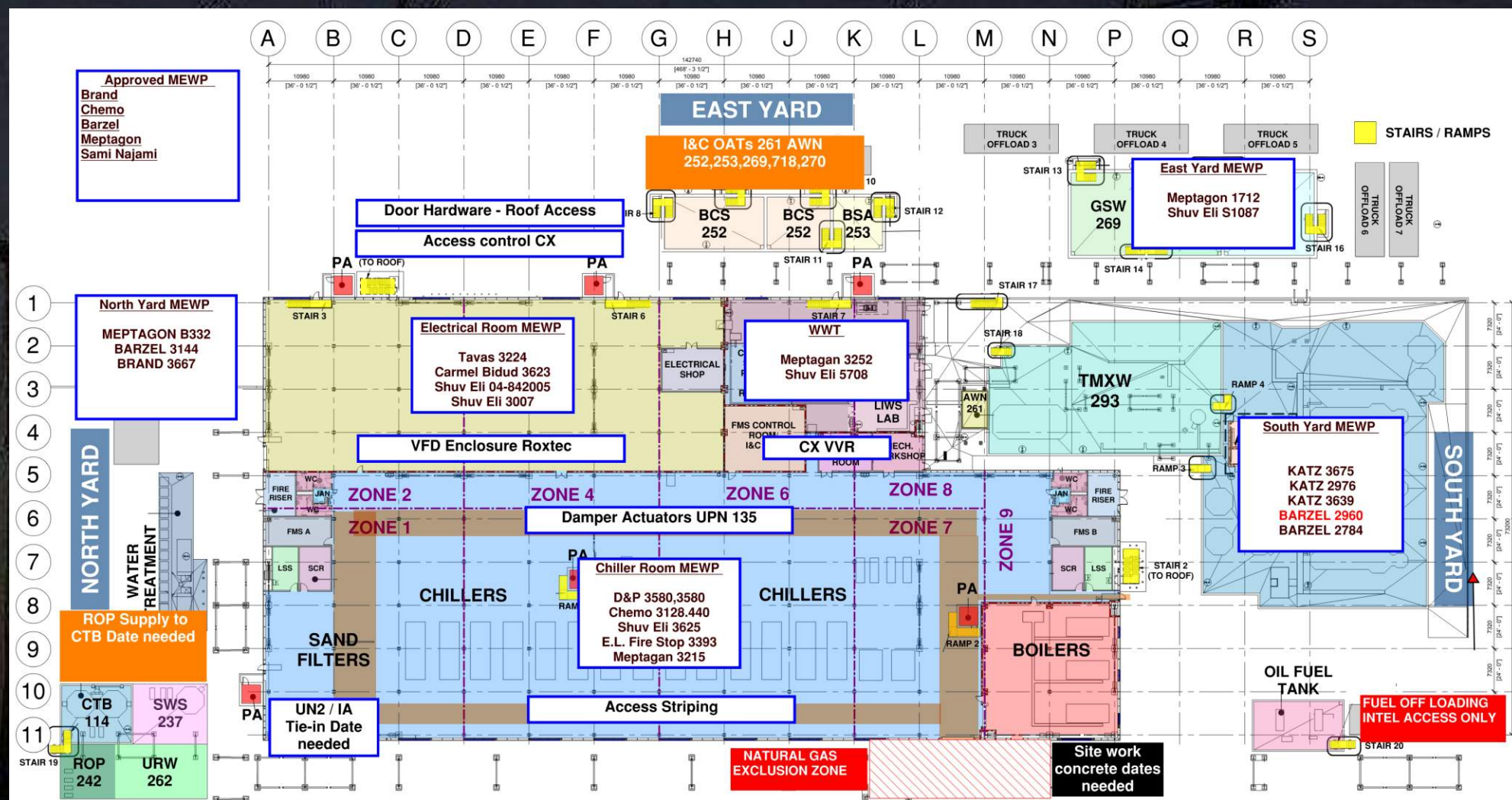
The image is an aerial photograph of a large construction site. A red, semi-transparent polygon outlines a winding path that serves as an access road, starting from the bottom left, curving around the center, and extending towards the right. A yellow, semi-transparent polygon highlights a rectangular area at the top center of the site, labeled as the 'closed work area'. Within this yellow area, there is a smaller white rectangle containing a black and white photograph of a construction worker. To the right of the yellow area, a white box with a red border contains text about the start of steel erection. The ground is a mix of dirt, gravel, and concrete, with various construction materials and equipment scattered throughout. In the background, there are industrial buildings and a parking lot with several vehicles.

HYG
starting RCTO steel
erection on 04/05/25

access road



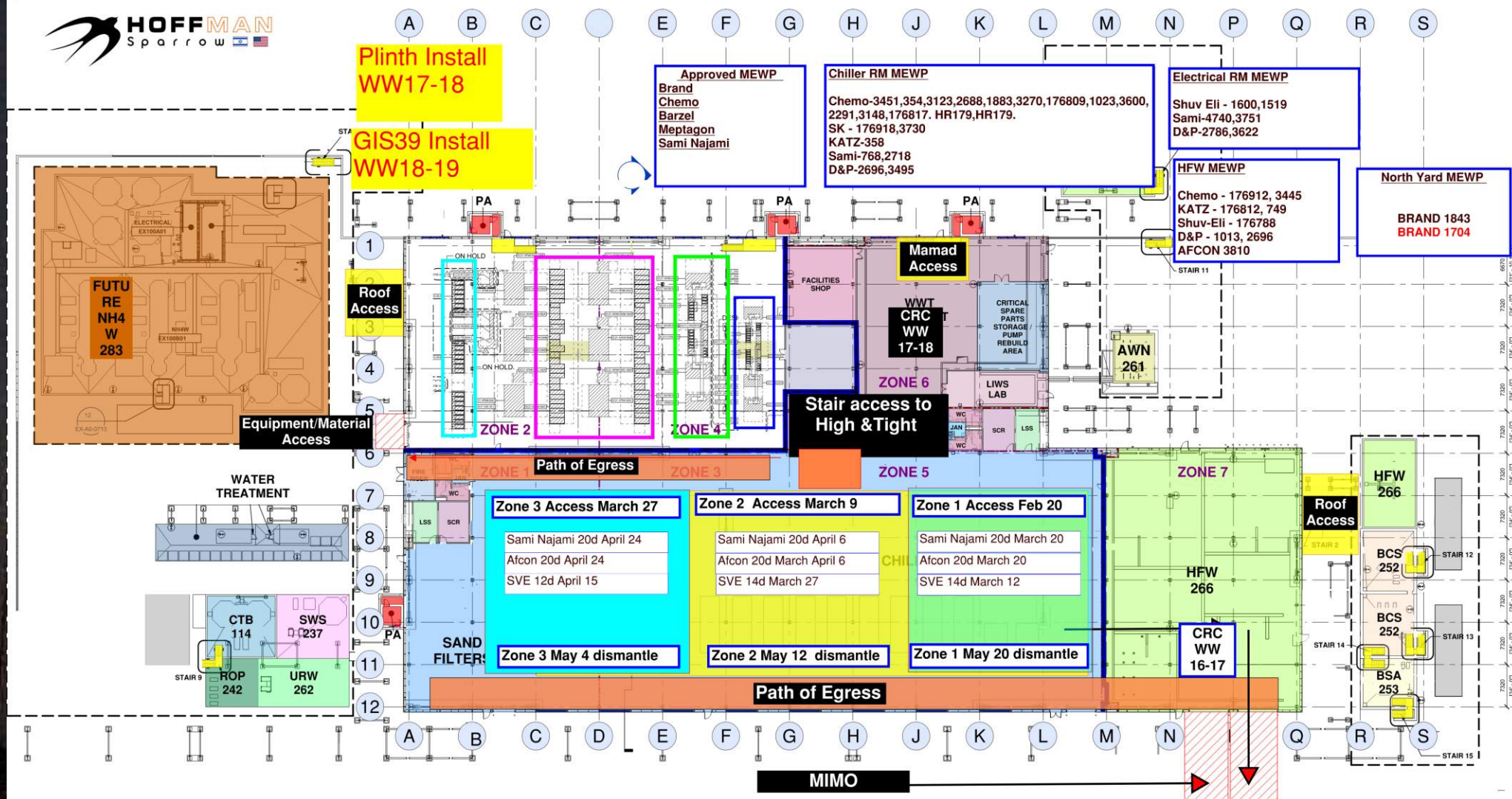
CUB 1



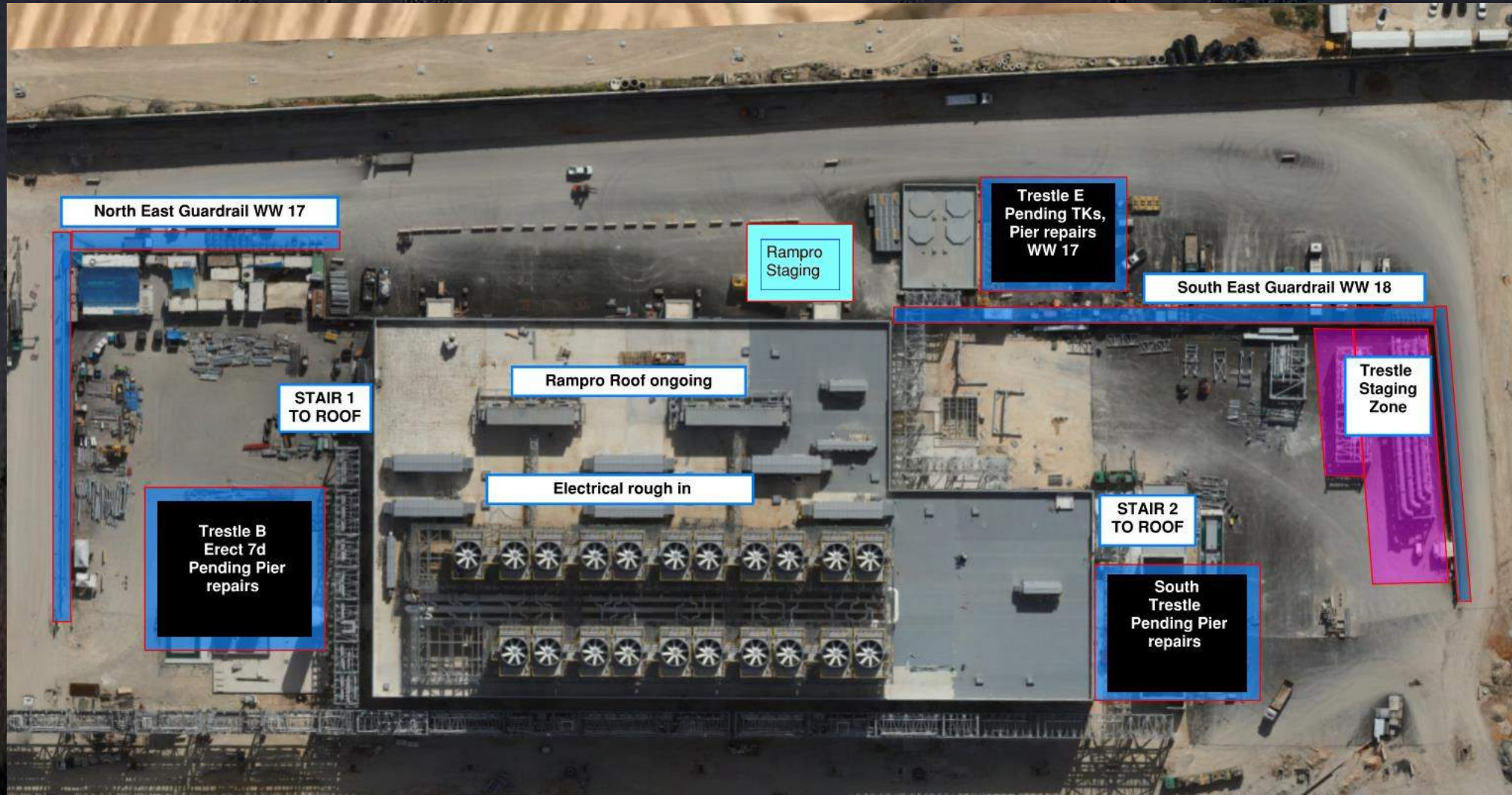


CUB 1 – EXTERIOR/ROOF

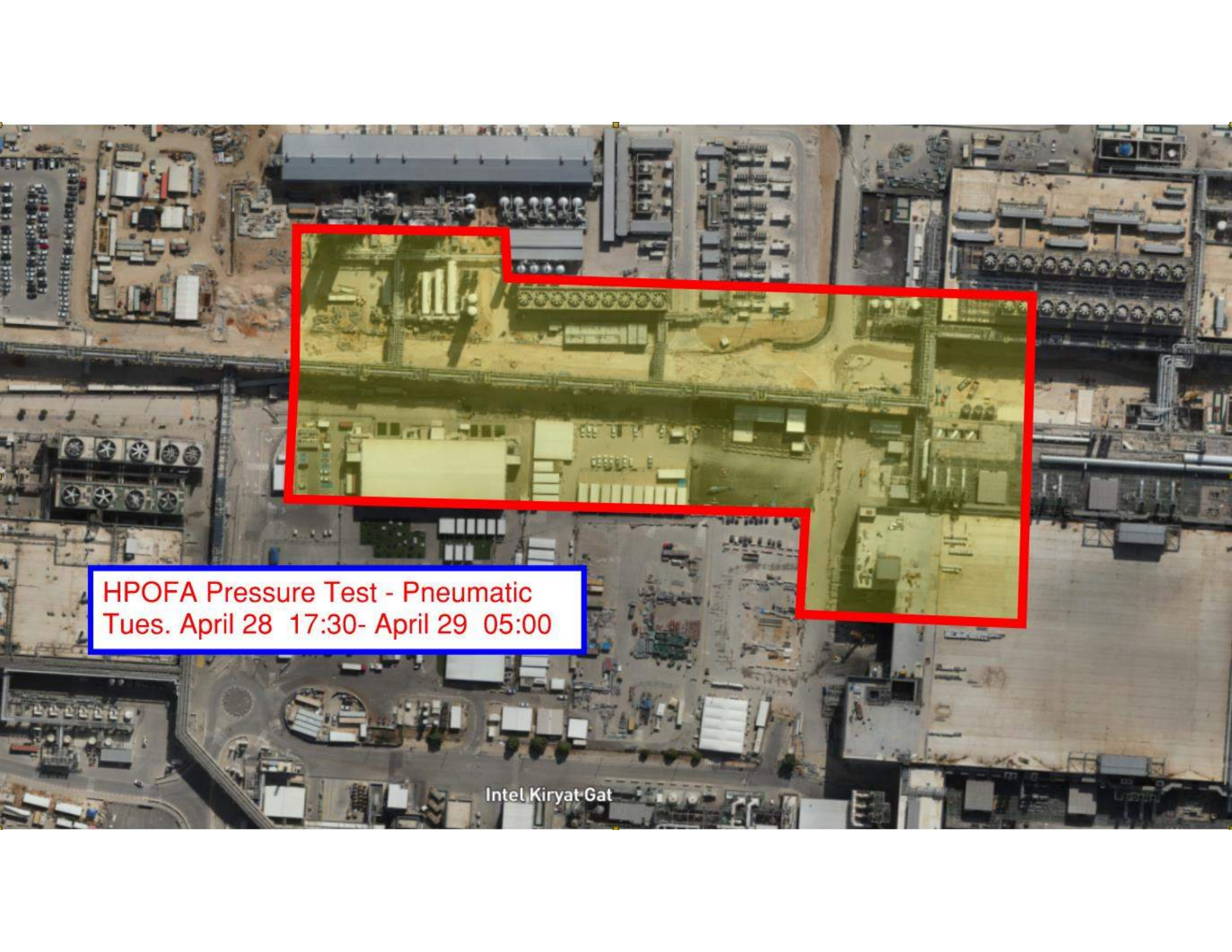




CUB 2- Trestles/Roof/Guardrails





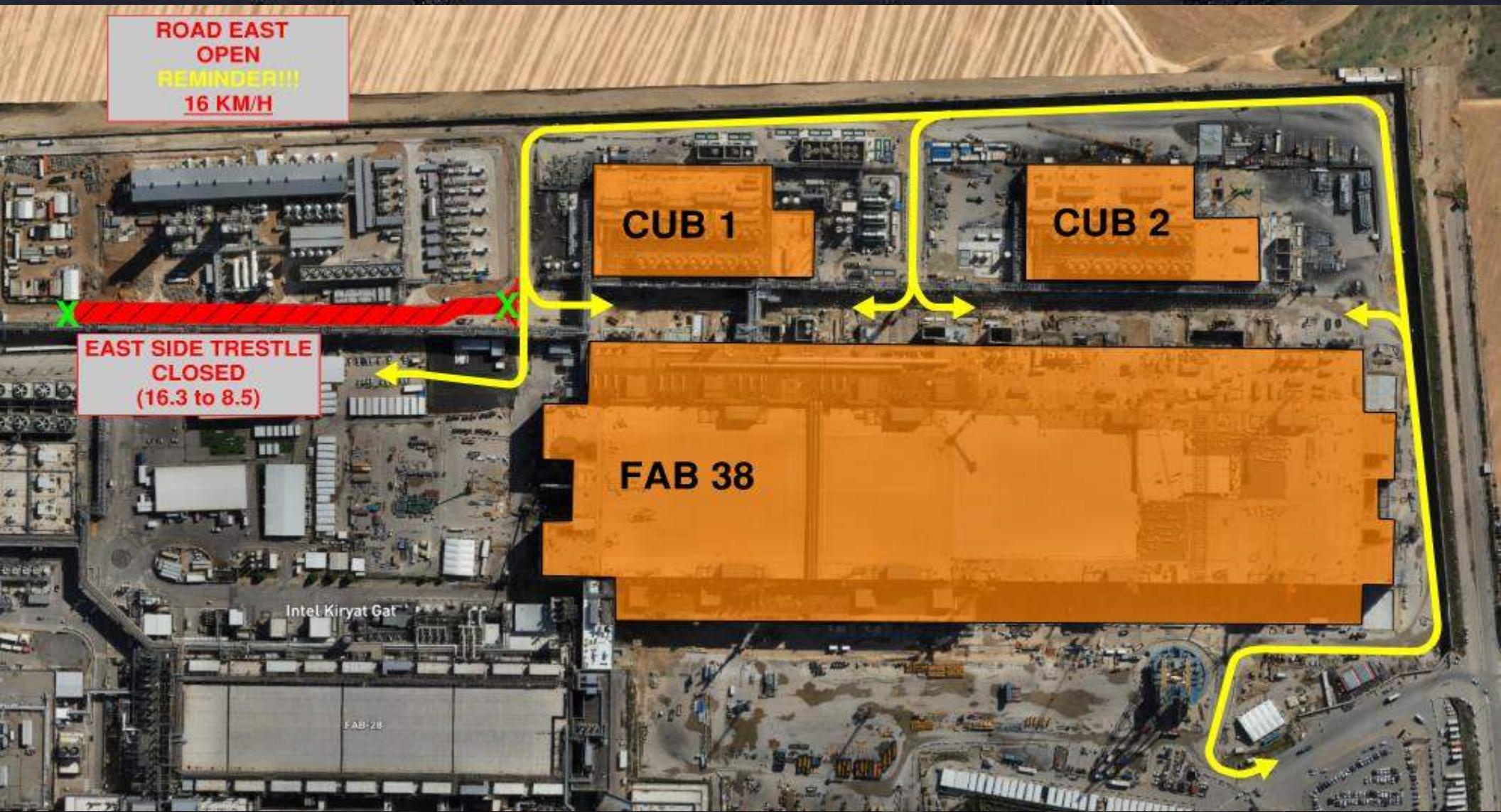
An aerial photograph of an industrial complex, likely a water treatment plant, featuring various buildings, pipes, and storage tanks. A red rectangular box highlights a central area containing several large, light-colored cylindrical tanks and associated infrastructure. The surrounding area includes parking lots with vehicles and other industrial structures.

HPOFA Pressure Test - Pneumatic
Tues. April 28 17:30- April 29 05:00

Intel Kiryat Gat

Daily Coordination Meeting

Site Logistics



Daily Coordination Meeting

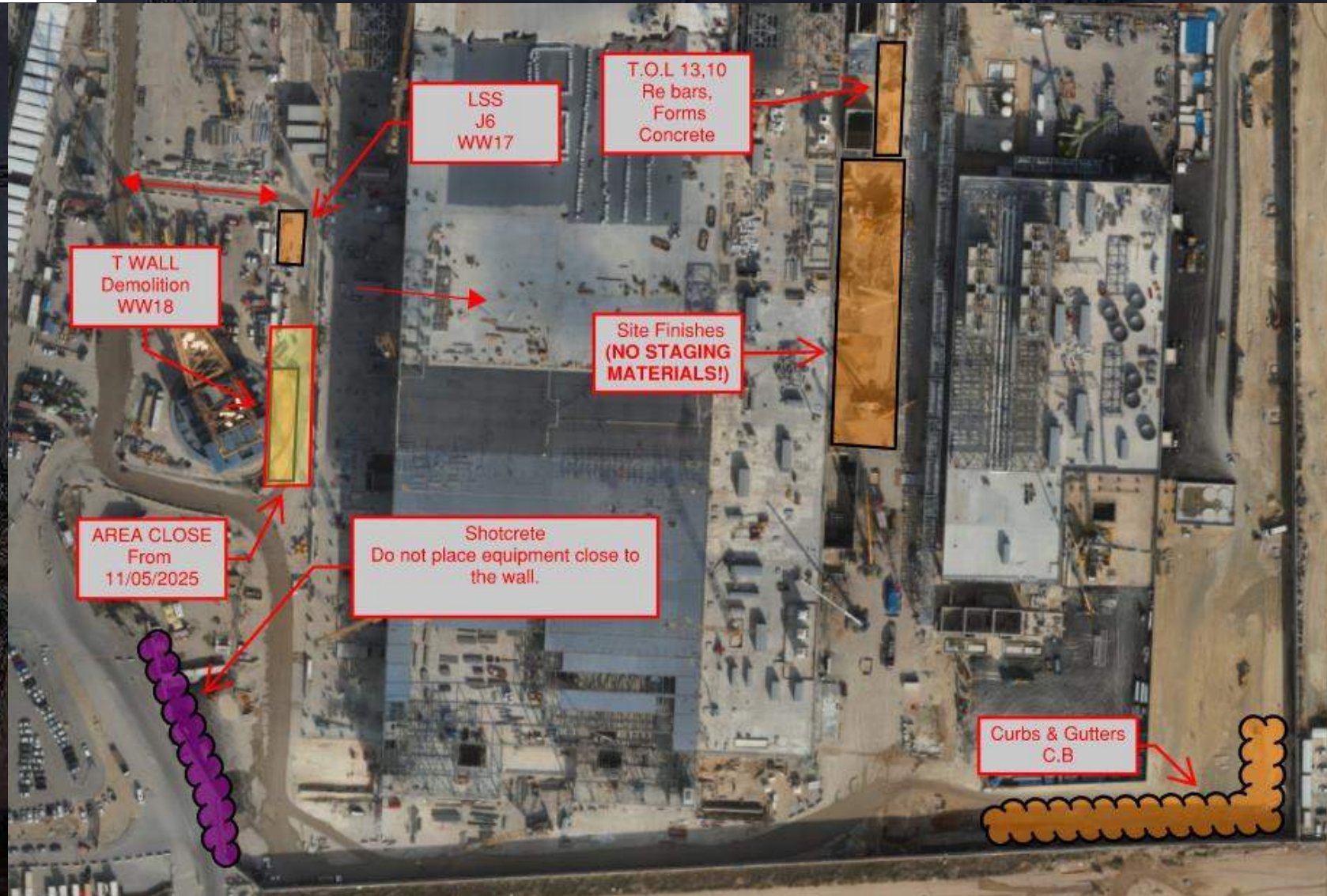
Site Logistics: North





Daily Coordination Meeting

Site Logistics: South



Daily Coordination Meeting

MAMAD Locations

MAMAD LOCATIONS (19-March-2025)

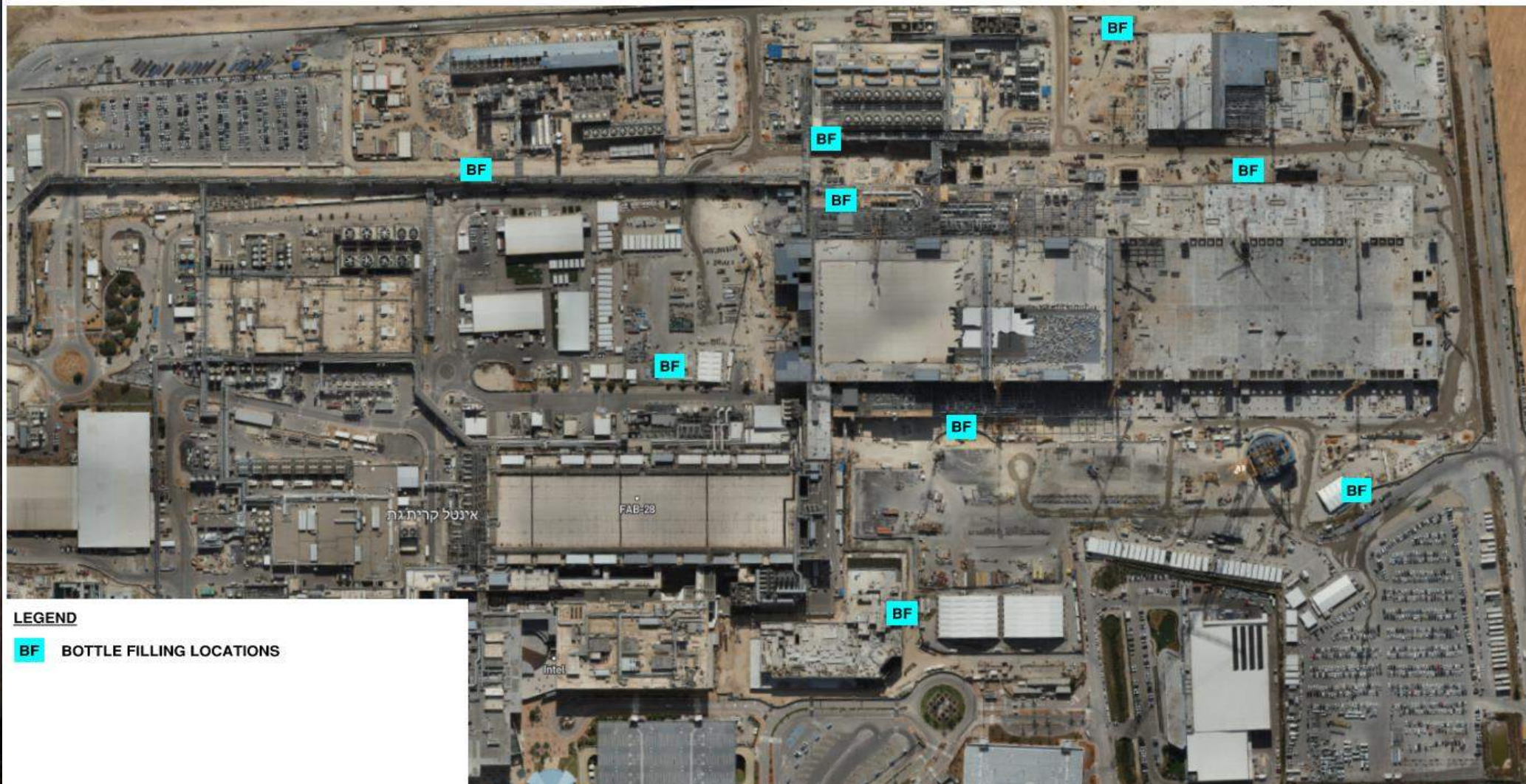
■ LARGE
■ SMALL
■ BUILDING



Daily Coordination Meeting

WATER BOTTLE FILLING STATIONS

WATER BOTTLE FILLING STATIONS



Core Belief; Focus on **HIGH-RISK** activities.

A hyper focus on the highest potential consequence activities is critical to prevent life-altering injuries, especially when work deviates from the plan.

Daily Coordination Meeting



14:00 Sign In