

Daily Coordination Meeting



14:00 Sign In

Daily Coordination Meeting

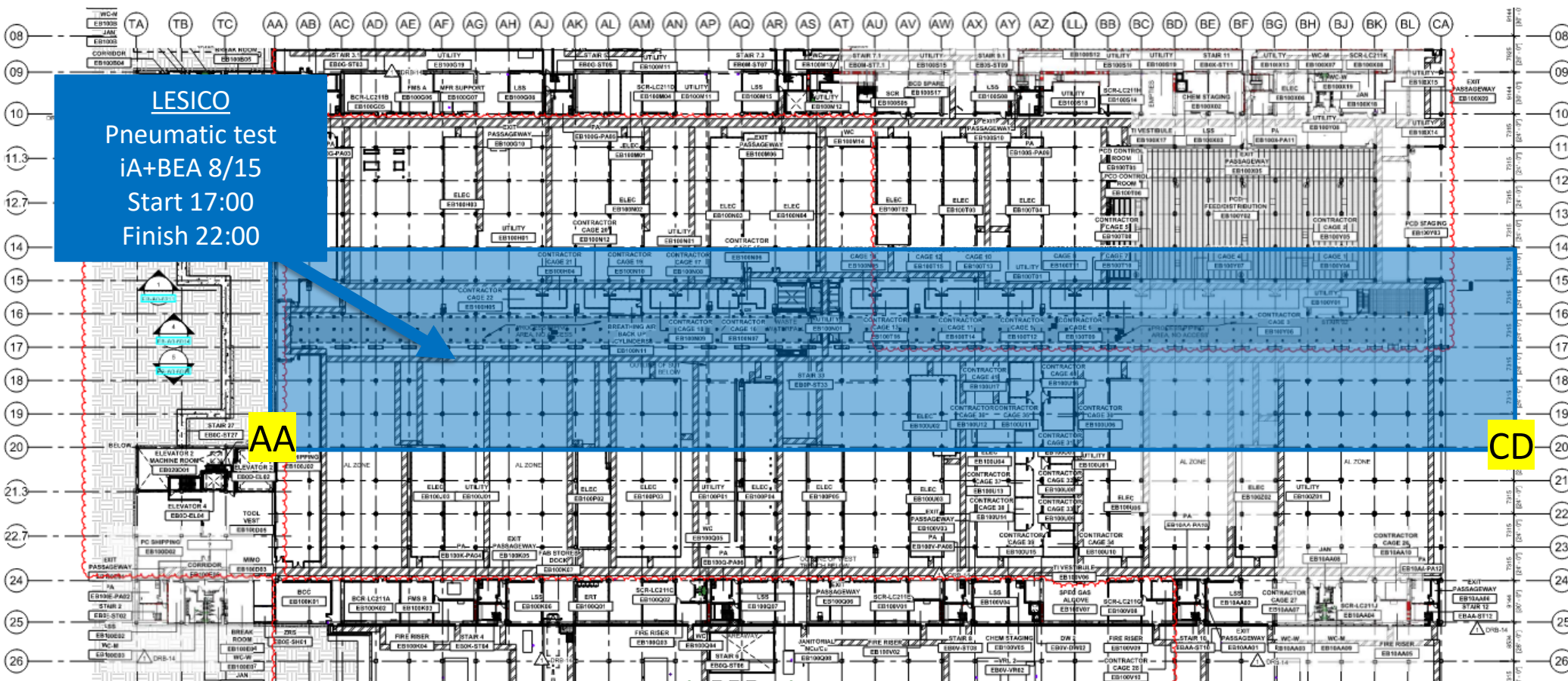
General Topics:

- Sanity check our process





UTILITY LEVEL MOD1



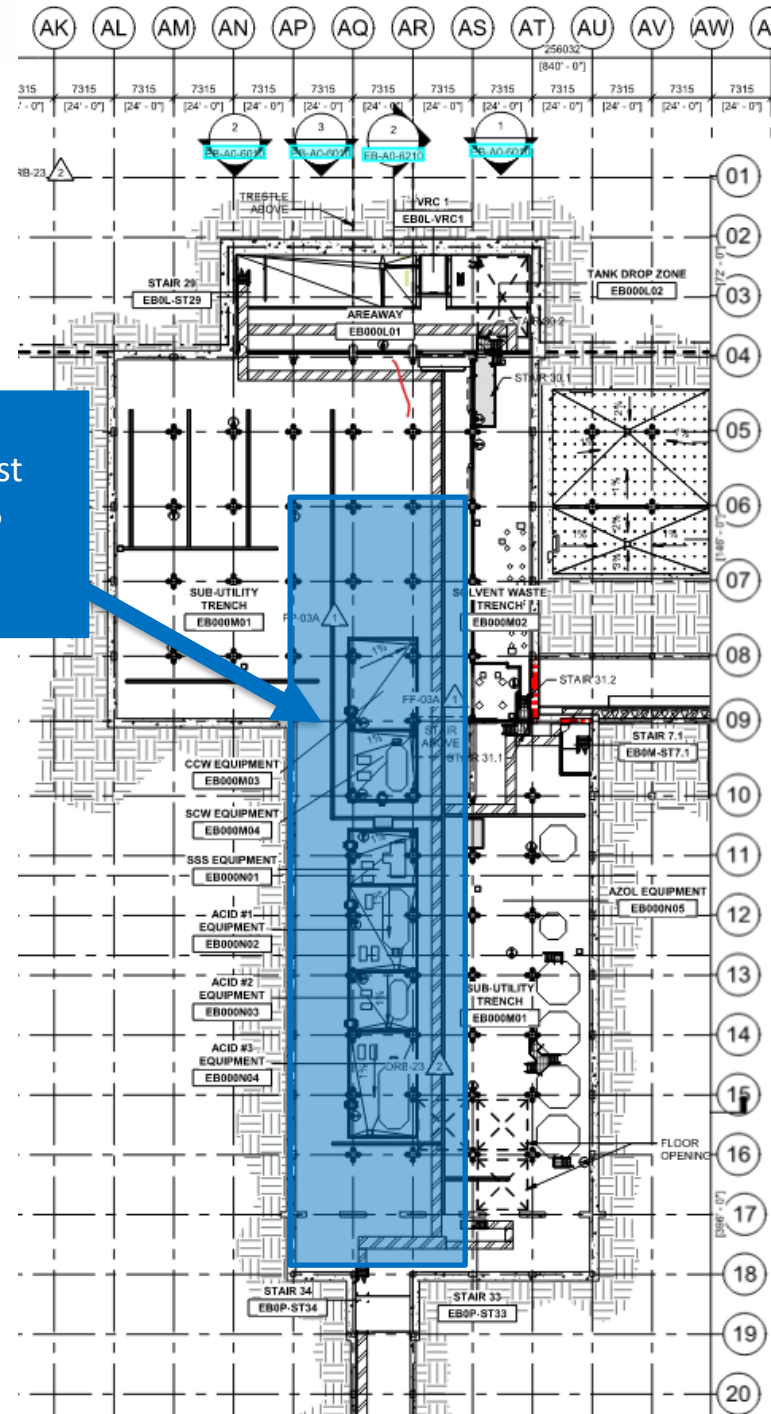


HOFFMAN CONSTRUCTION COMPANY

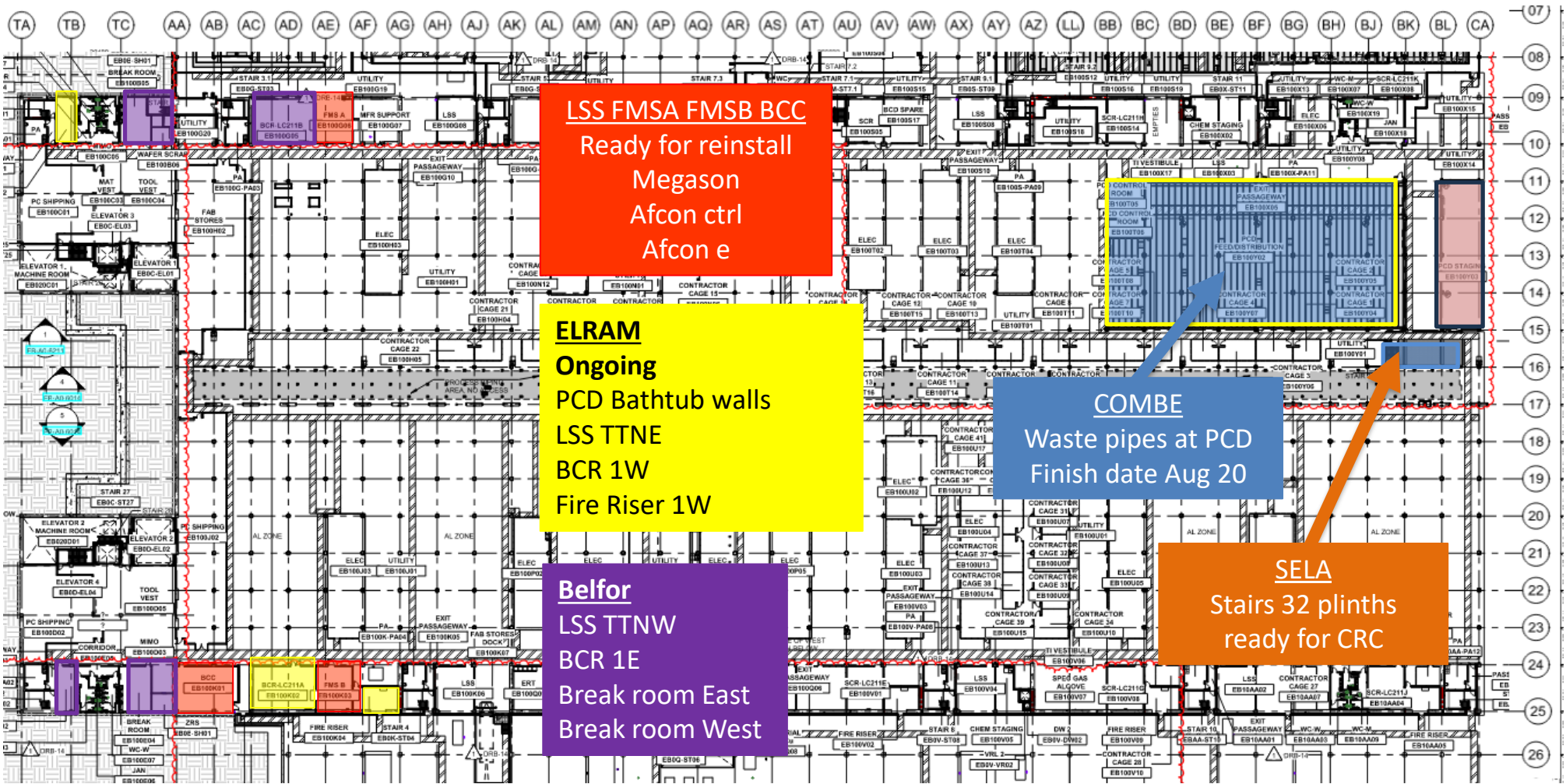


SUT LEVEL

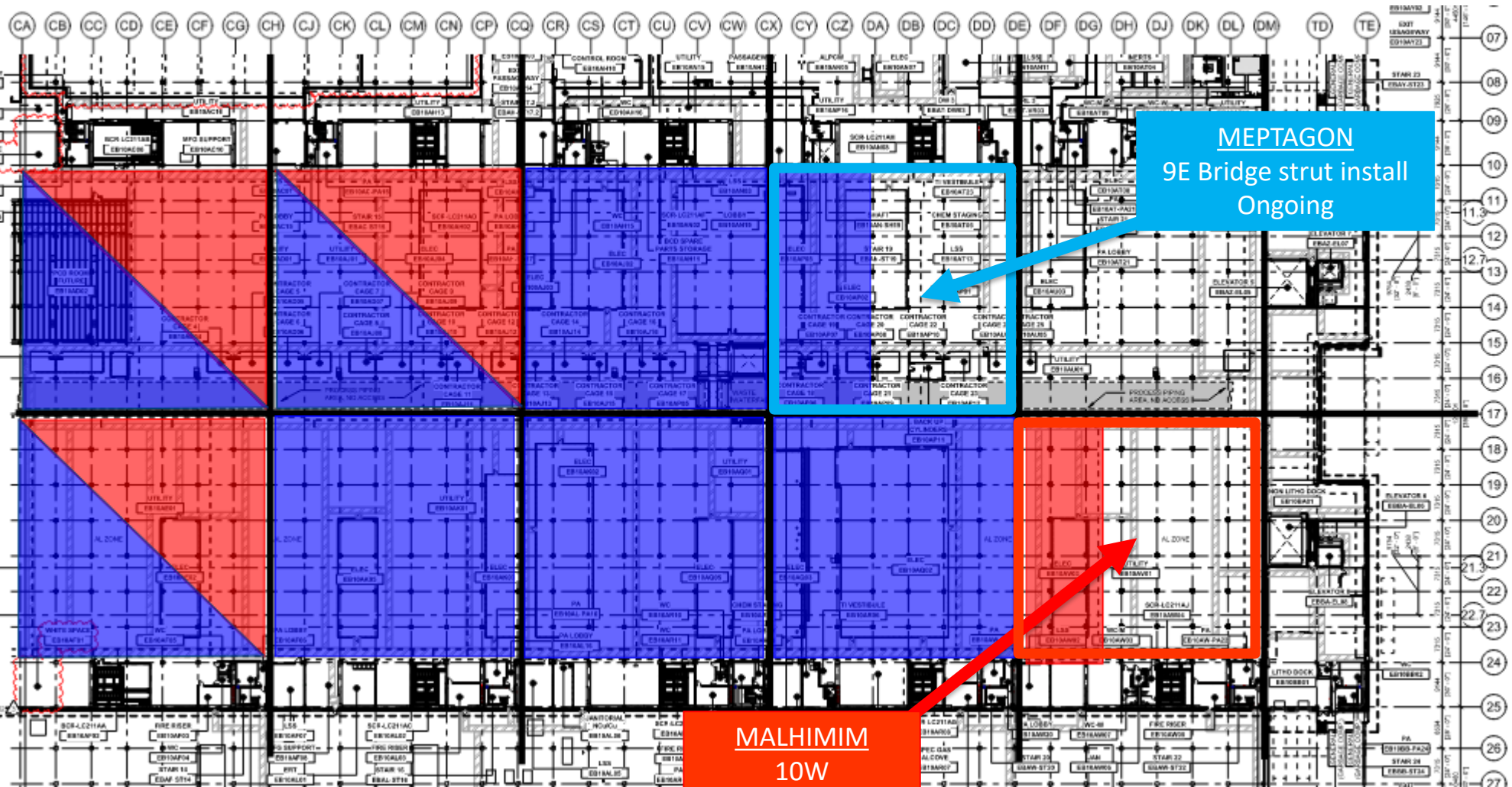
LESICO
Pneumatic test
iA+BEA 8/15
Start 17:00
Finish 22:00



UTILITY LEVEL MOD1

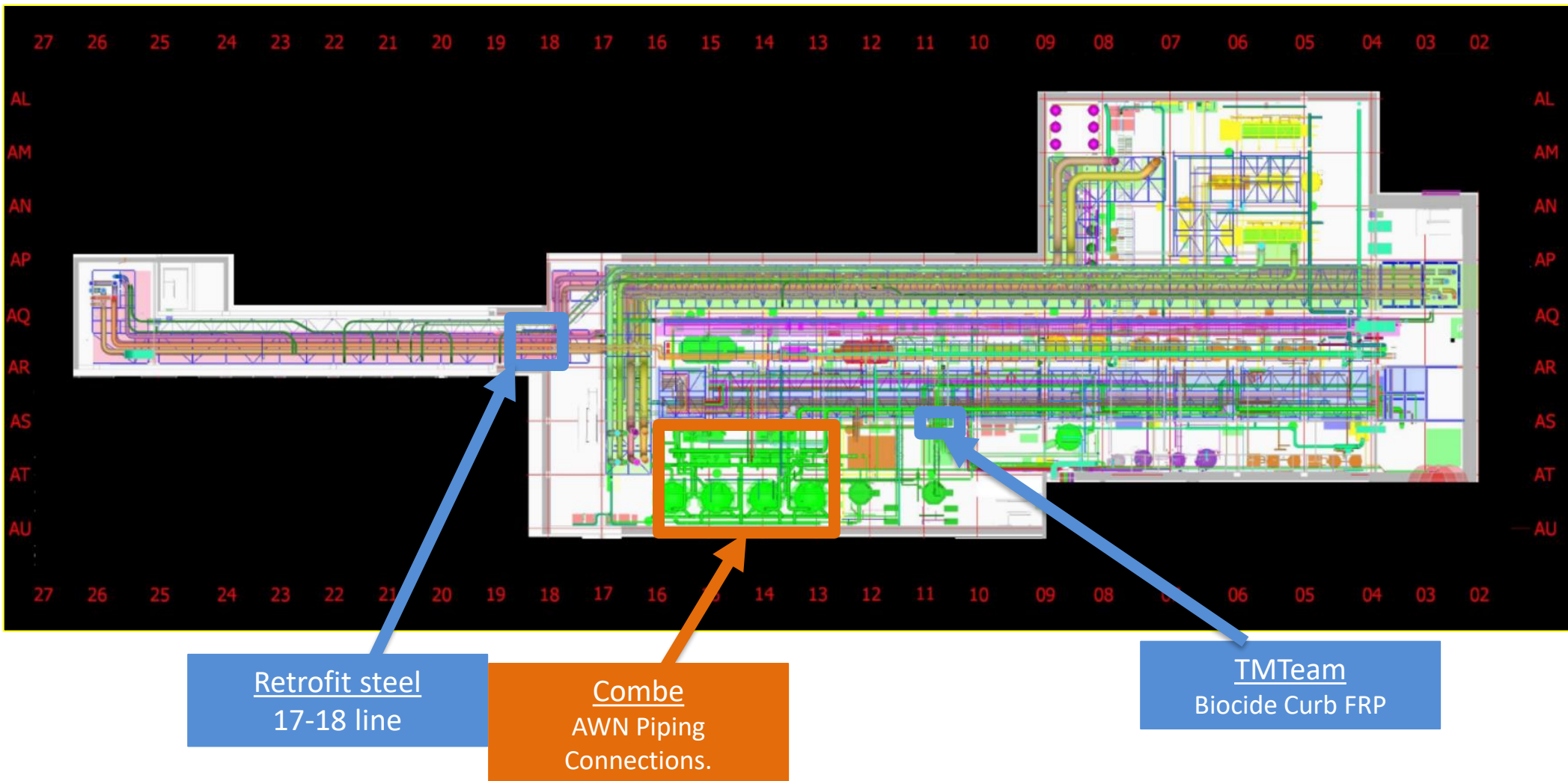


UTILITY LEVEL MOD2



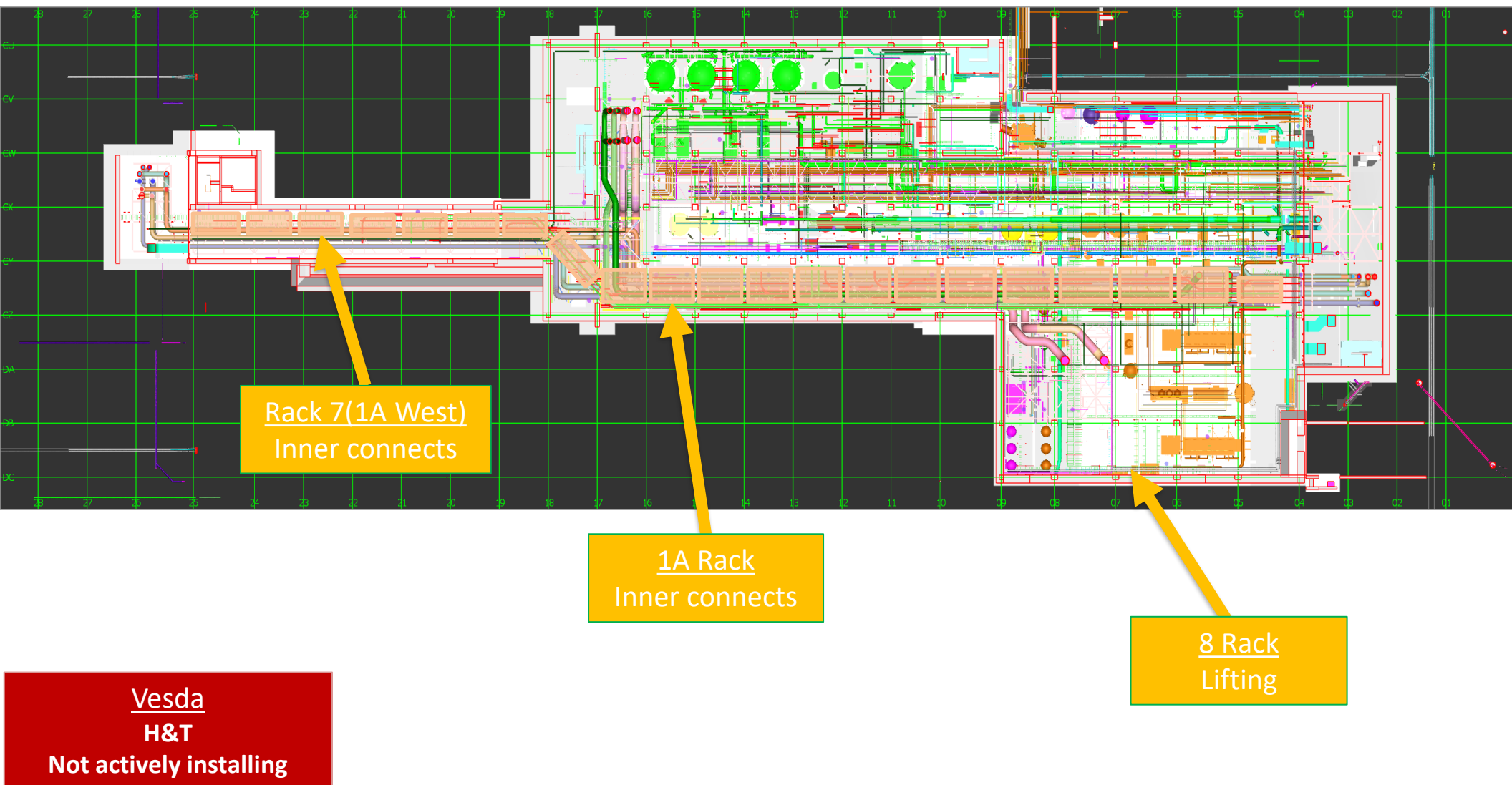


SUT 38.1 LEVEL

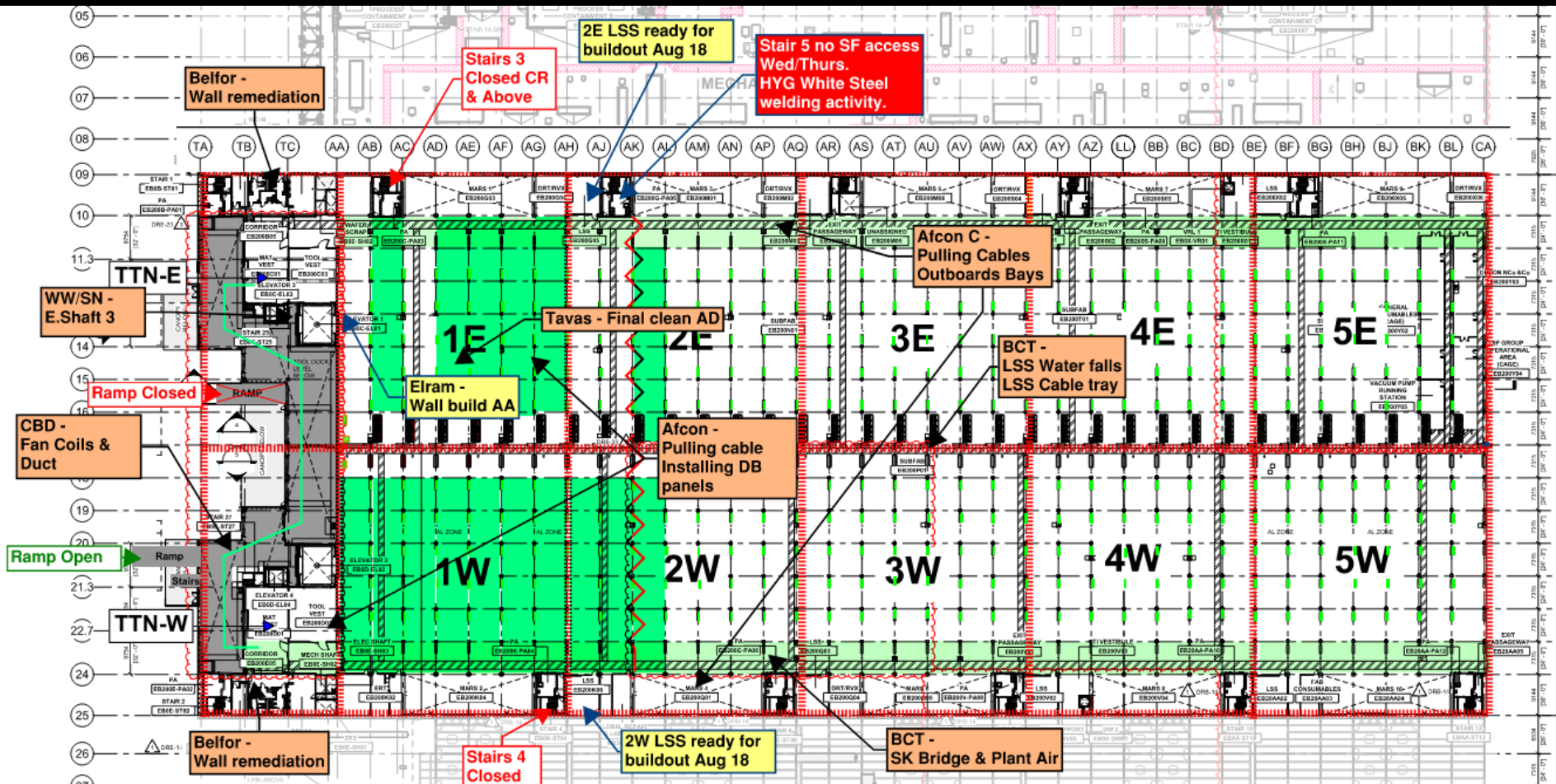




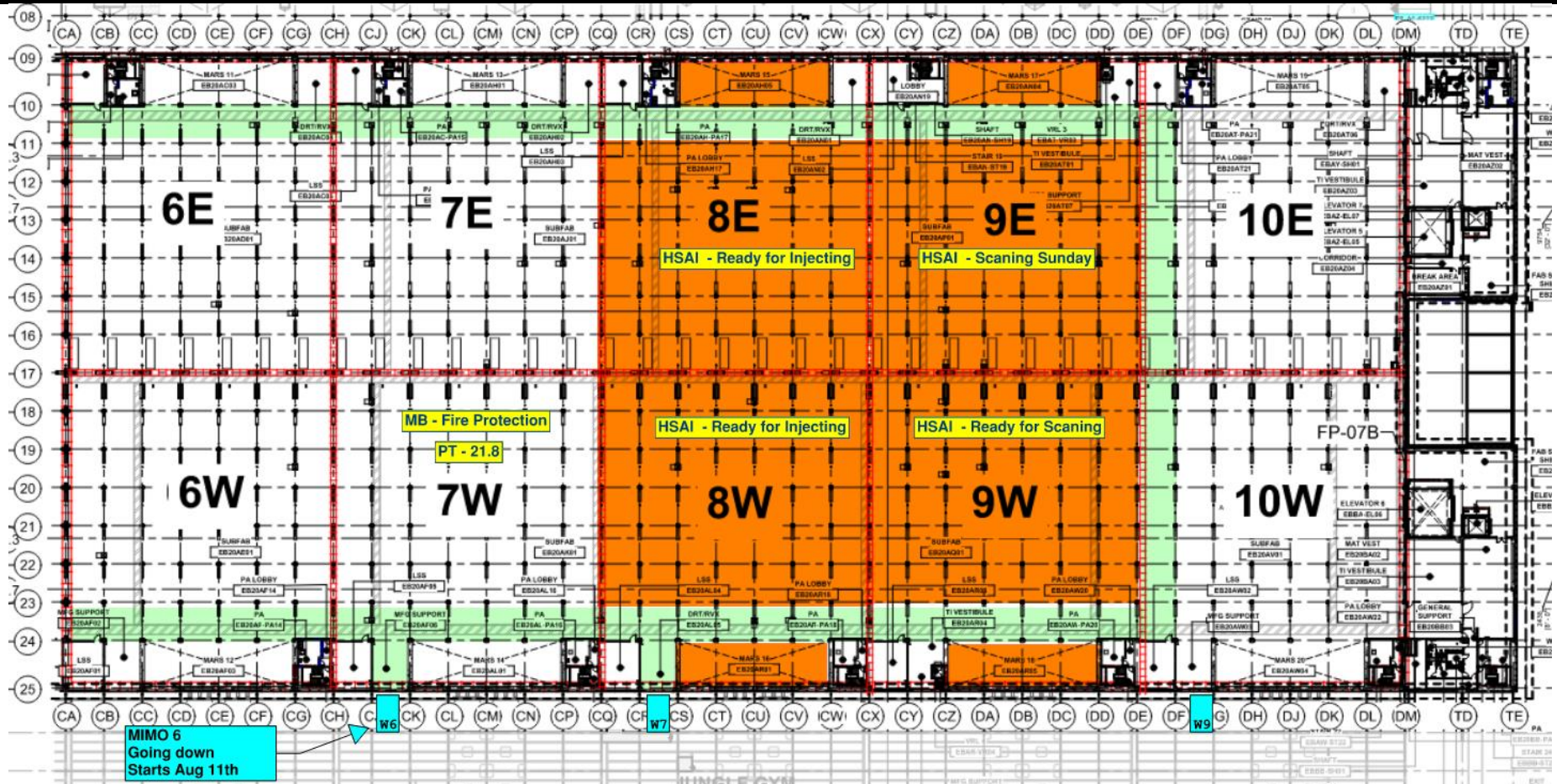
SUT 38.2 LEVEL



SUBFAB BUILDOUT MOD 1

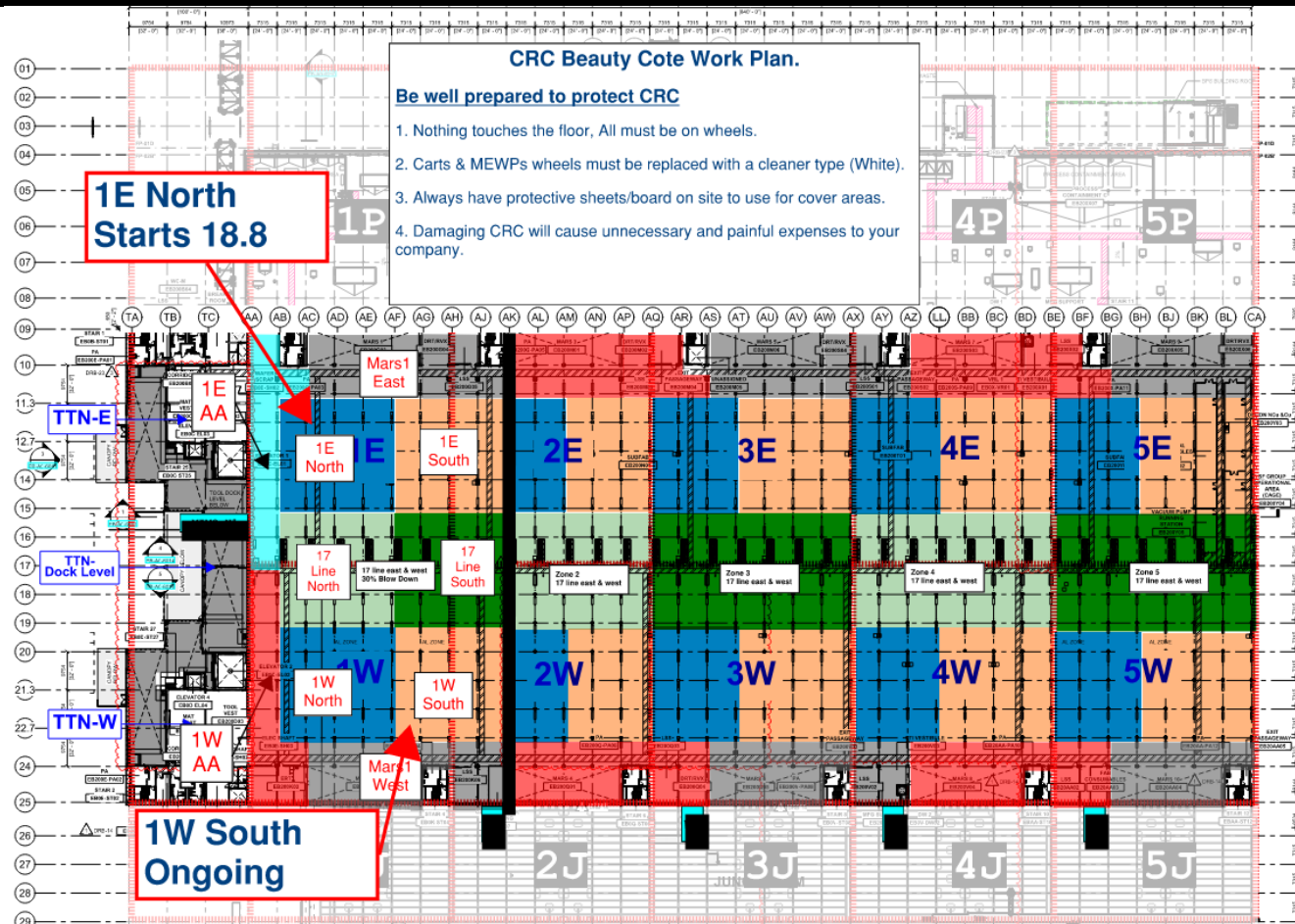


SUBFAB BUILDOUT MOD 2





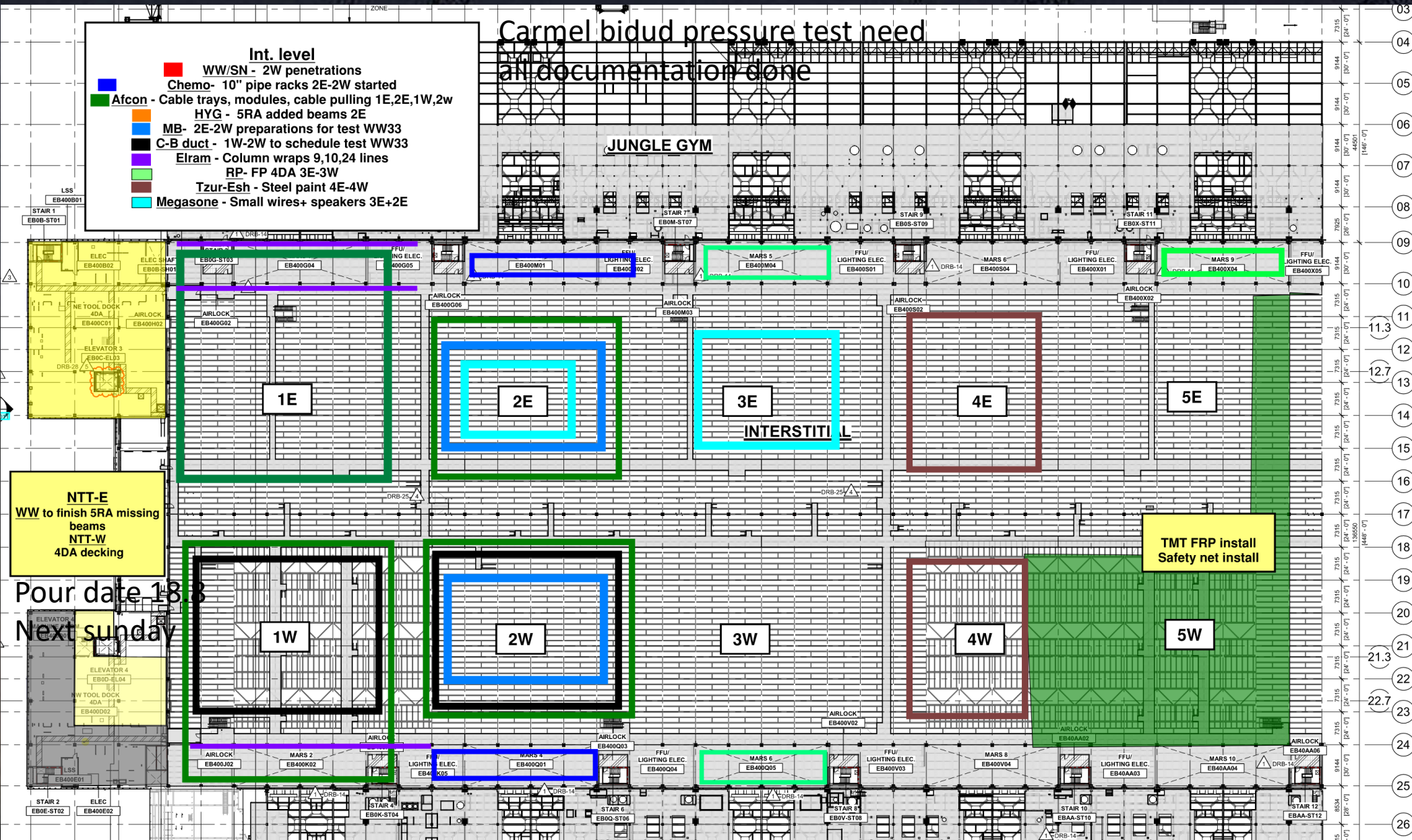
SUBFAB CRC TOP COTE

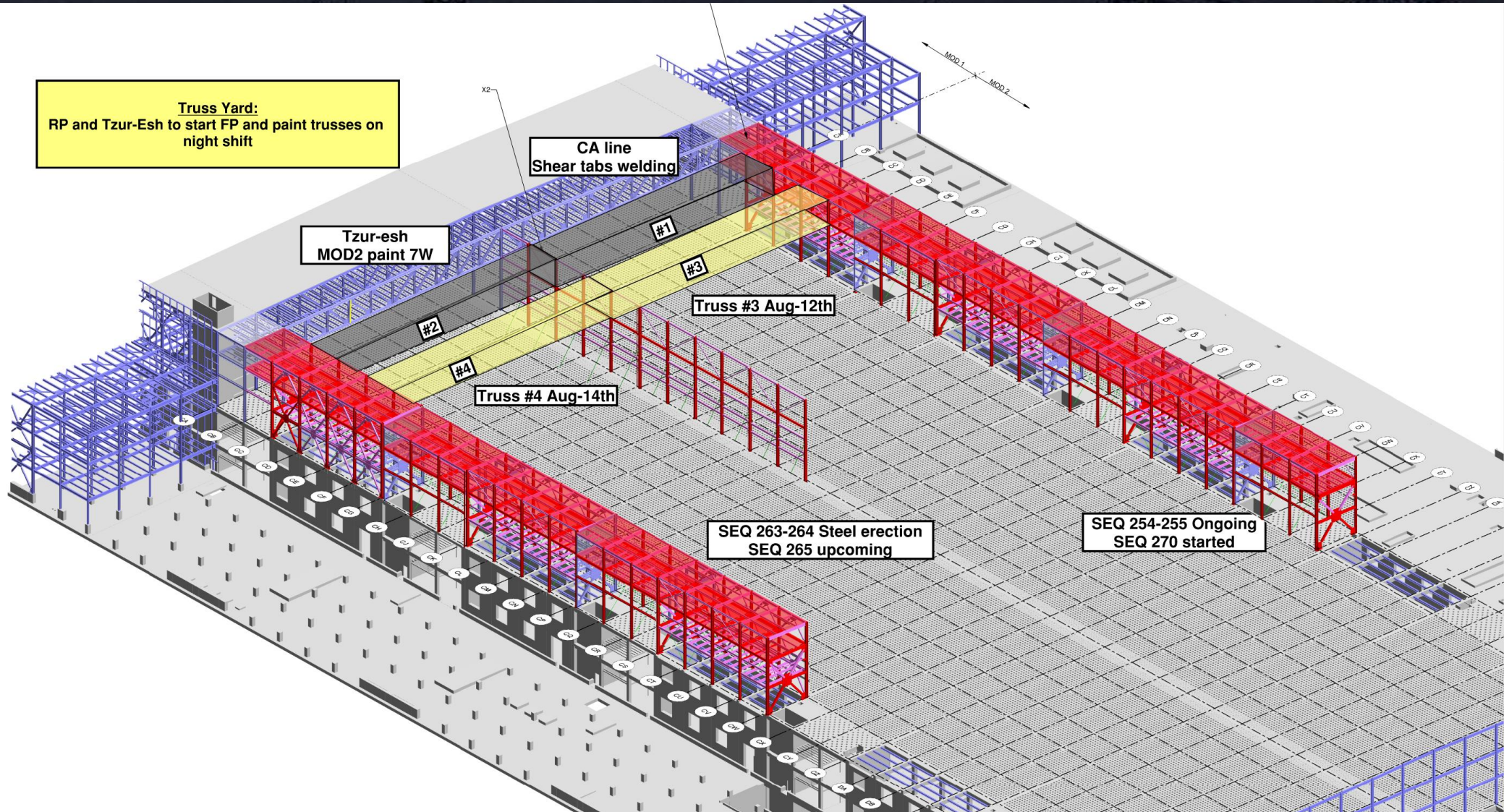


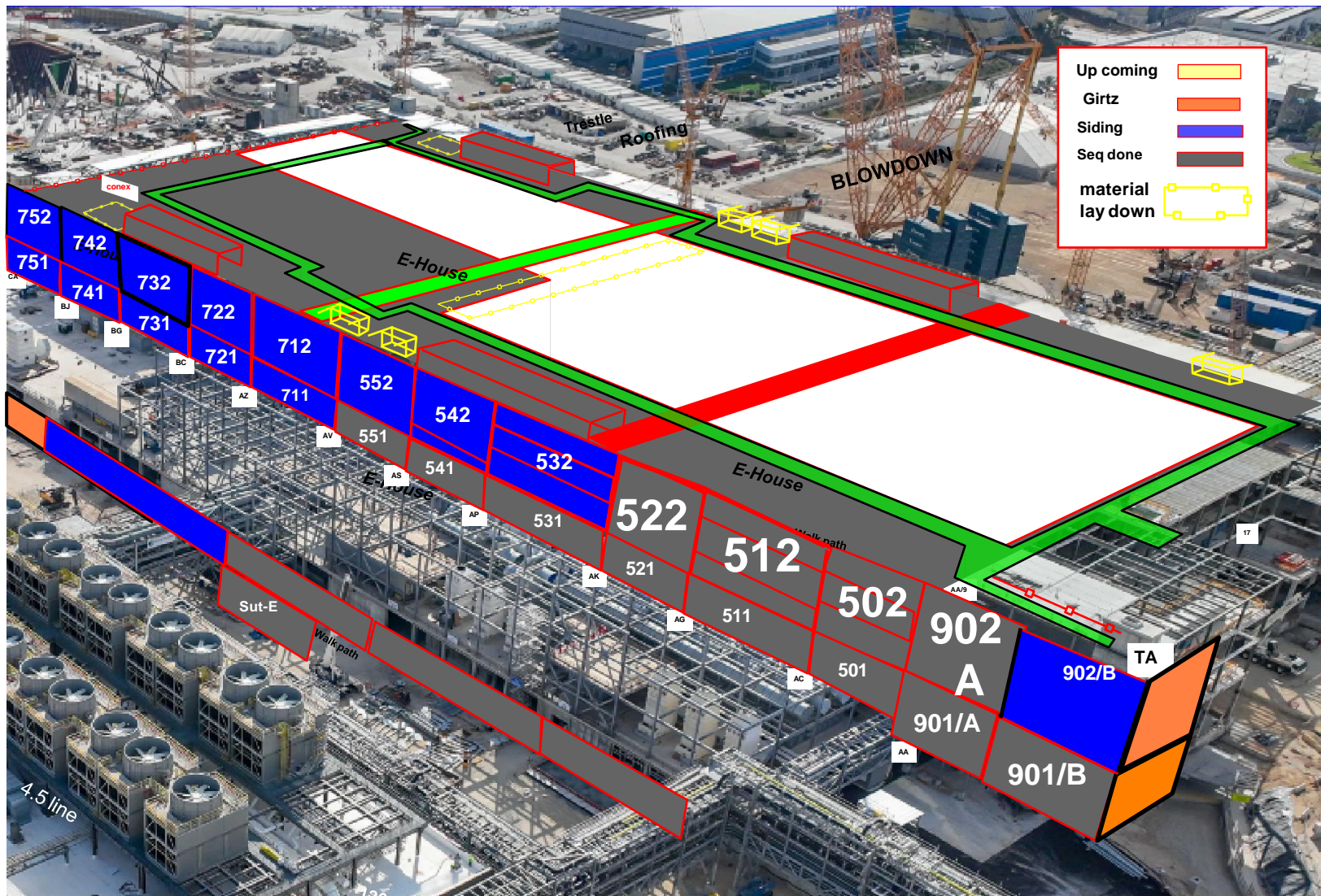




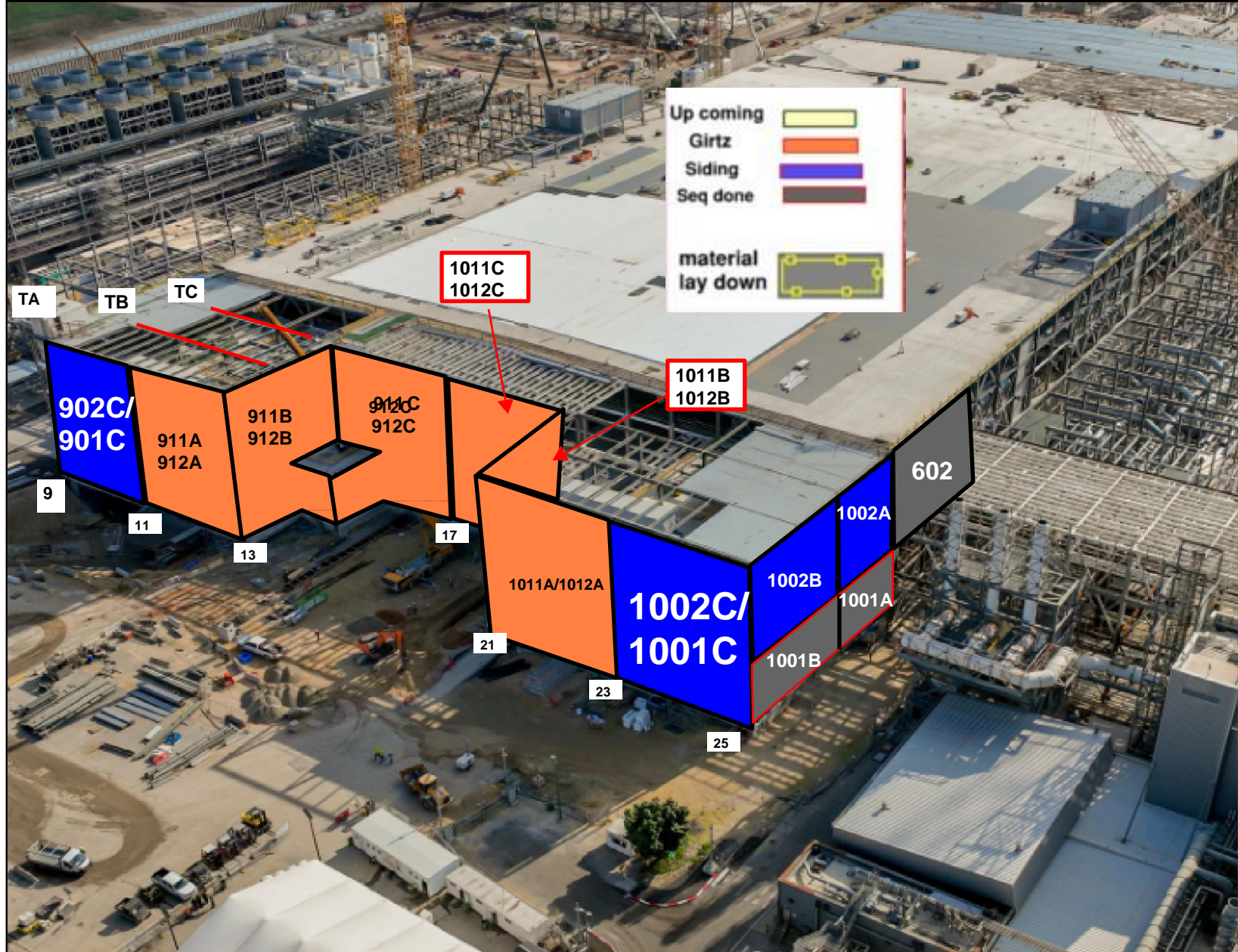
Talad: Steel lids removal
Sela: Shot blast
2x Primer
spray top coat
Talad: Re-install steel lids
Flooring protection

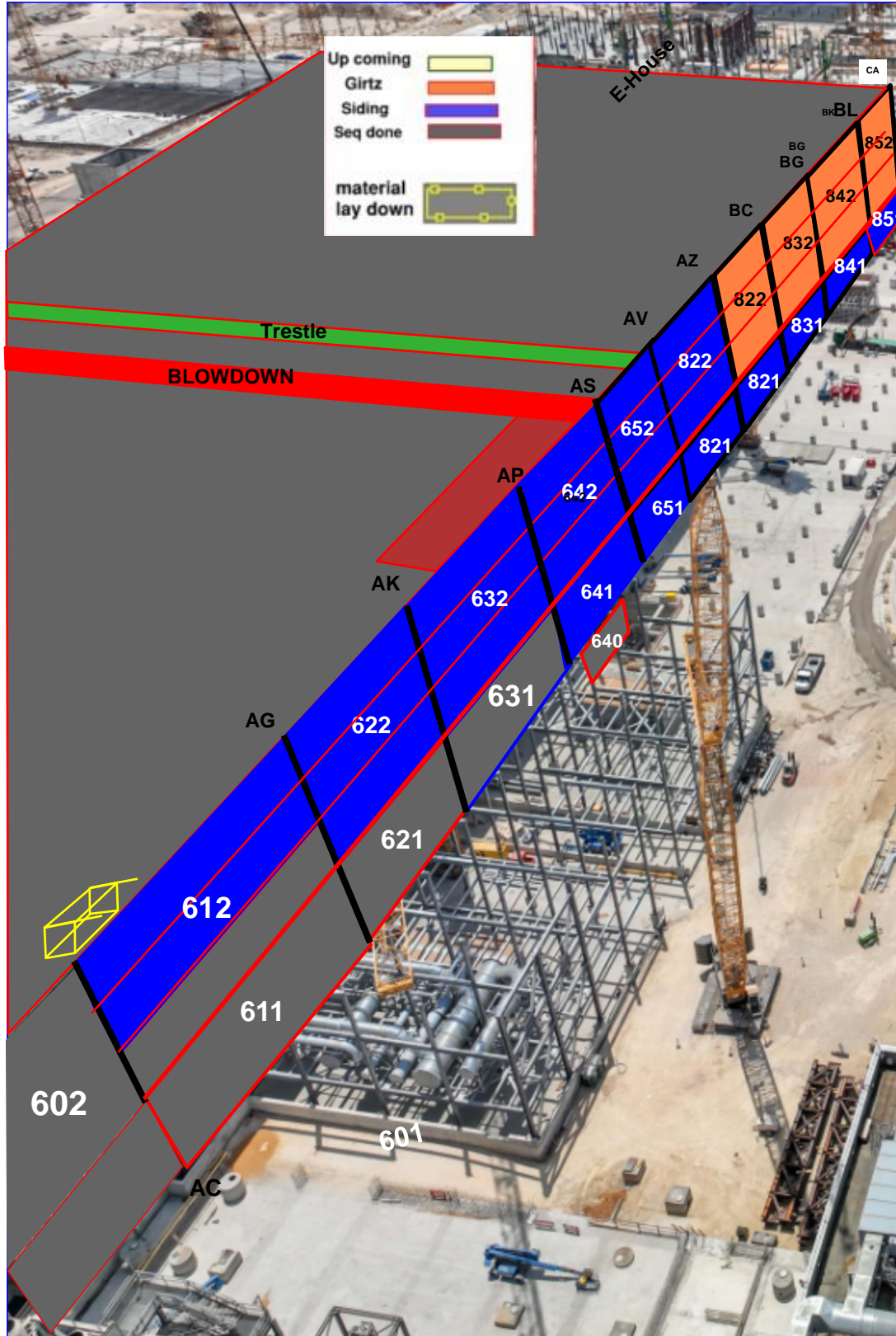






Walk path

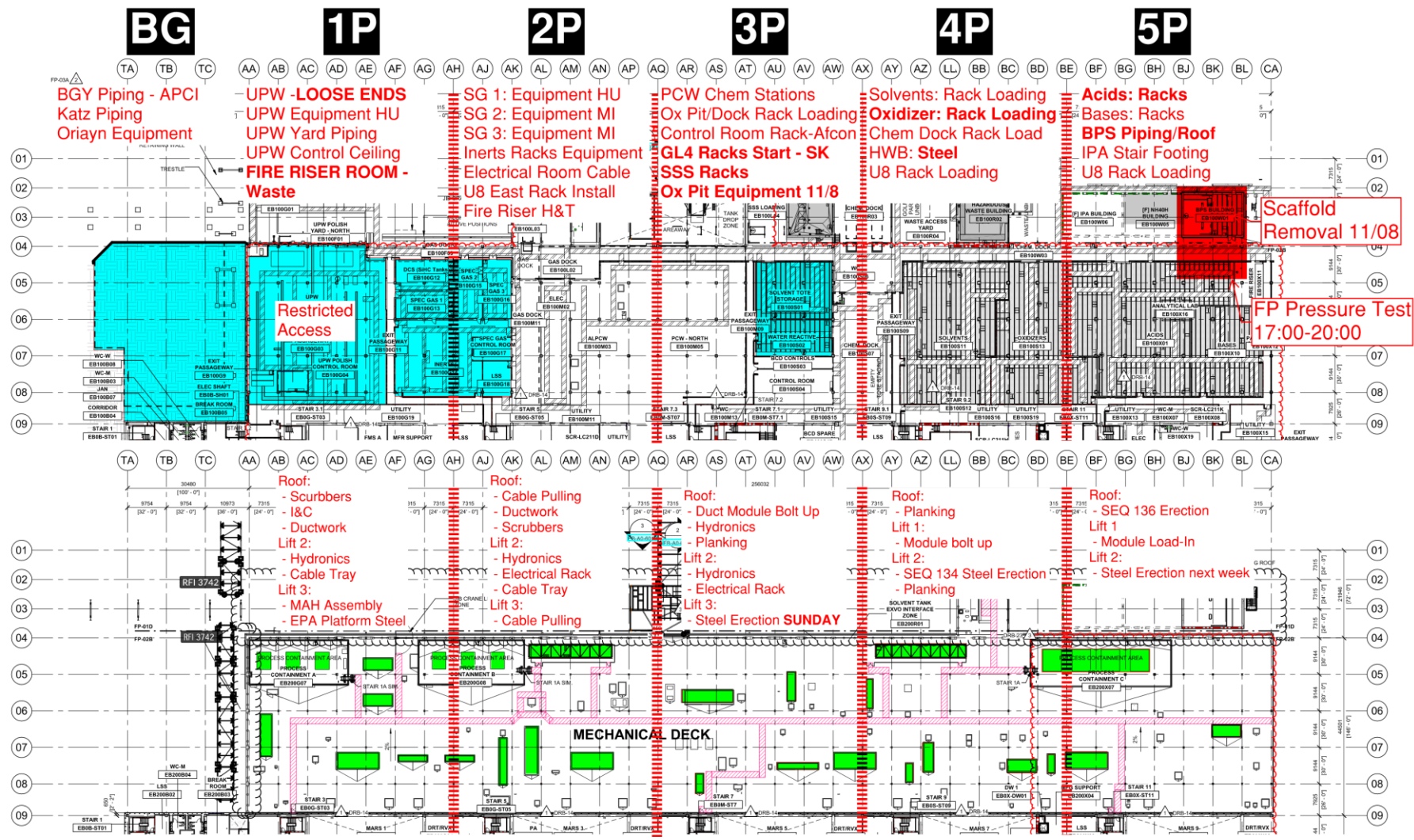





PSSS.1

Utility Level
1YA

PSSS Roof
2SA





PSSS P1
PachTaas Operation
Plates: 15-08-2024
Air Blower: 20-08-2024
EPA Platform: 26-08-2024

Single
EPA Platform

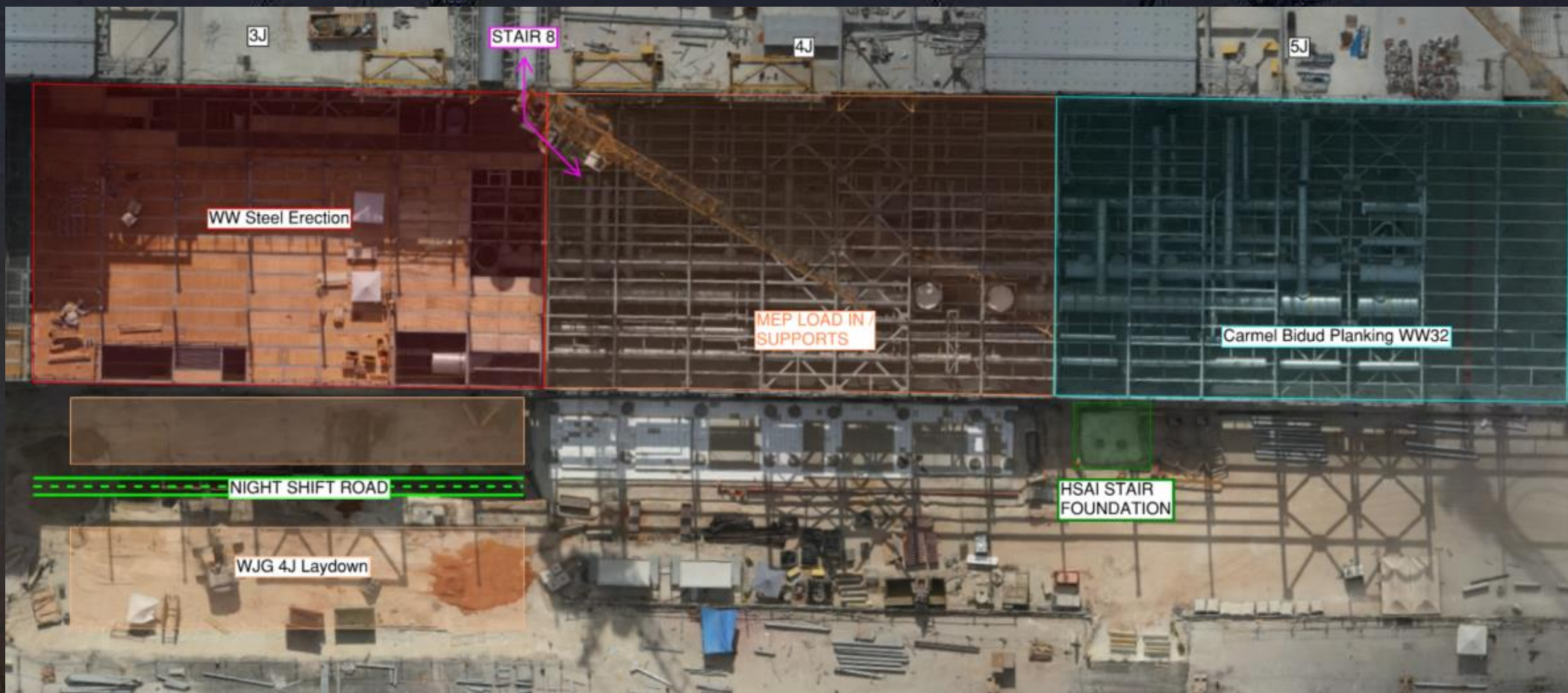
Fan



WJG 01J, 02J LIFT 2 & 3



WJG 03J, 04J, 05J LIFT 2 & 3



1J 2J 3J 4J 5J

EB100K02 EB100K03 EB100K04 EB100K05 EB100K06 EB100K07 EB100K08 EB100K09 EB100K10 EB100K11 EB100K12 EB100K13 EB100K14 EB100K15 EB100K16 EB100K17 EB100K18 EB100K19 EB100K20 EB100K21 EB100K22 EB100K23 EB100K24 EB100K25 EB100K26 EB100K27 EB100K28 EB100K29 EB100K30 EB100K31 EB100K32 EB100K33 EB100K34 EB100K35 EB100K36 EB100K37 EB100K38 EB100K39 EB100K40 EB100K41 EB100K42 EB100K43 EB100K44 EB100K45 EB100K46 EB100K47 EB100K48 EB100K49 EB100K50 EB100K51 EB100K52 EB100K53 EB100K54 EB100K55 EB100K56 EB100K57 EB100K58 EB100K59 EB100K60 EB100K61 EB100K62 EB100K63 EB100K64 EB100K65 EB100K66 EB100K67 EB100K68 EB100K69 EB100K70 EB100K71 EB100K72 EB100K73 EB100K74 EB100K75 EB100K76 EB100K77 EB100K78 EB100K79 EB100K80 EB100K81 EB100K82 EB100K83 EB100K84 EB100K85 EB100K86 EB100K87 EB100K88 EB100K89 EB100K90 EB100K91 EB100K92 EB100K93 EB100K94 EB100K95 EB100K96 EB100K97 EB100K98 EB100K99 EB100K100

FIRE RISER EB100K03 EB100K04 EB100K05 EB100K06 EB100K07 EB100K08 EB100K09 EB100K10 EB100K11 EB100K12 EB100K13 EB100K14 EB100K15 EB100K16 EB100K17 EB100K18 EB100K19 EB100K20 EB100K21 EB100K22 EB100K23 EB100K24 EB100K25 EB100K26 EB100K27 EB100K28 EB100K29 EB100K30 EB100K31 EB100K32 EB100K33 EB100K34 EB100K35 EB100K36 EB100K37 EB100K38 EB100K39 EB100K40 EB100K41 EB100K42 EB100K43 EB100K44 EB100K45 EB100K46 EB100K47 EB100K48 EB100K49 EB100K50 EB100K51 EB100K52 EB100K53 EB100K54 EB100K55 EB100K56 EB100K57 EB100K58 EB100K59 EB100K60 EB100K61 EB100K62 EB100K63 EB100K64 EB100K65 EB100K66 EB100K67 EB100K68 EB100K69 EB100K70 EB100K71 EB100K72 EB100K73 EB100K74 EB100K75 EB100K76 EB100K77 EB100K78 EB100K79 EB100K80 EB100K81 EB100K82 EB100K83 EB100K84 EB100K85 EB100K86 EB100K87 EB100K88 EB100K89 EB100K90 EB100K91 EB100K92 EB100K93 EB100K94 EB100K95 EB100K96 EB100K97 EB100K98 EB100K99 EB100K100

STAIR 4 EB00K-ST04

WC EB100C03 EB100C04 EB100C05 EB100C06 EB100C07 EB100C08 EB100C09 EB100C10 EB100C11 EB100C12 EB100C13 EB100C14 EB100C15 EB100C16 EB100C17 EB100C18 EB100C19 EB100C20 EB100C21 EB100C22 EB100C23 EB100C24 EB100C25 EB100C26 EB100C27 EB100C28 EB100C29 EB100C30 EB100C31 EB100C32 EB100C33 EB100C34 EB100C35 EB100C36 EB100C37 EB100C38 EB100C39 EB100C40 EB100C41 EB100C42 EB100C43 EB100C44 EB100C45 EB100C46 EB100C47 EB100C48 EB100C49 EB100C50 EB100C51 EB100C52 EB100C53 EB100C54 EB100C55 EB100C56 EB100C57 EB100C58 EB100C59 EB100C60 EB100C61 EB100C62 EB100C63 EB100C64 EB100C65 EB100C66 EB100C67 EB100C68 EB100C69 EB100C70 EB100C71 EB100C72 EB100C73 EB100C74 EB100C75 EB100C76 EB100C77 EB100C78 EB100C79 EB100C80 EB100C81 EB100C82 EB100C83 EB100C84 EB100C85 EB100C86 EB100C87 EB100C88 EB100C89 EB100C90 EB100C91 EB100C92 EB100C93 EB100C94 EB100C95 EB100C96 EB100C97 EB100C98 EB100C99 EB100C100

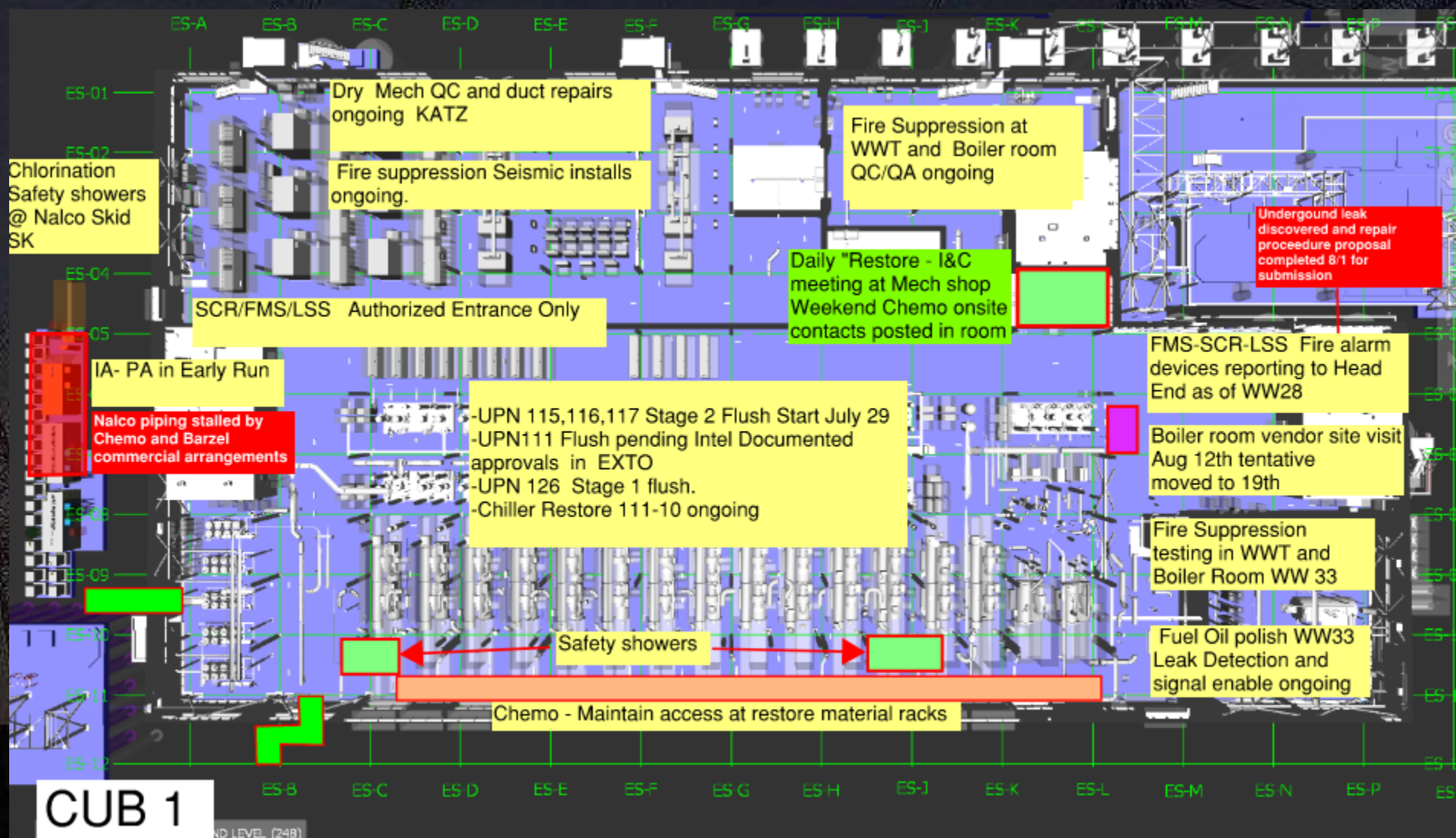
JANITORIAL EB100J01 EB100J02 EB100J03 EB100J04 EB100J05 EB100J06 EB100J07 EB100J08 EB100J09 EB100J10 EB100J11 EB100J12 EB100J13 EB100J14 EB100J15 EB100J16 EB100J17 EB100J18 EB100J19 EB100J20 EB100J21 EB100J22 EB100J23 EB100J24 EB100J25 EB100J26 EB100J27 EB100J28 EB100J29 EB100J30 EB100J31 EB100J32 EB100J33 EB100J34 EB100J35 EB100J36 EB100J37 EB100J38 EB100J39 EB100J40 EB100J41 EB100J42 EB100J43 EB100J44 EB100J45 EB100J46 EB100J47 EB100J48 EB100J49 EB100J50 EB100J51 EB100J52 EB100J53 EB100J54 EB100J55 EB100J56 EB100J57 EB100J58 EB100J59 EB100J60 EB100J61 EB100J62 EB100J63 EB100J64 EB100J65 EB100J66 EB100J67 EB100J68 EB100J69 EB100J70 EB100J71 EB100J72 EB100J73 EB100J74 EB100J75 EB100J76 EB100J77 EB100J78 EB100J79 EB100J80 EB100J81 EB100J82 EB100J83 EB100J84 EB100J85 EB100J86 EB100J87 EB100J88 EB100J89 EB100J90 EB100J91 EB100J92 EB100J93 EB100J94 EB100J95 EB100J96 EB100J97 EB100J98 EB100J99 EB100J100

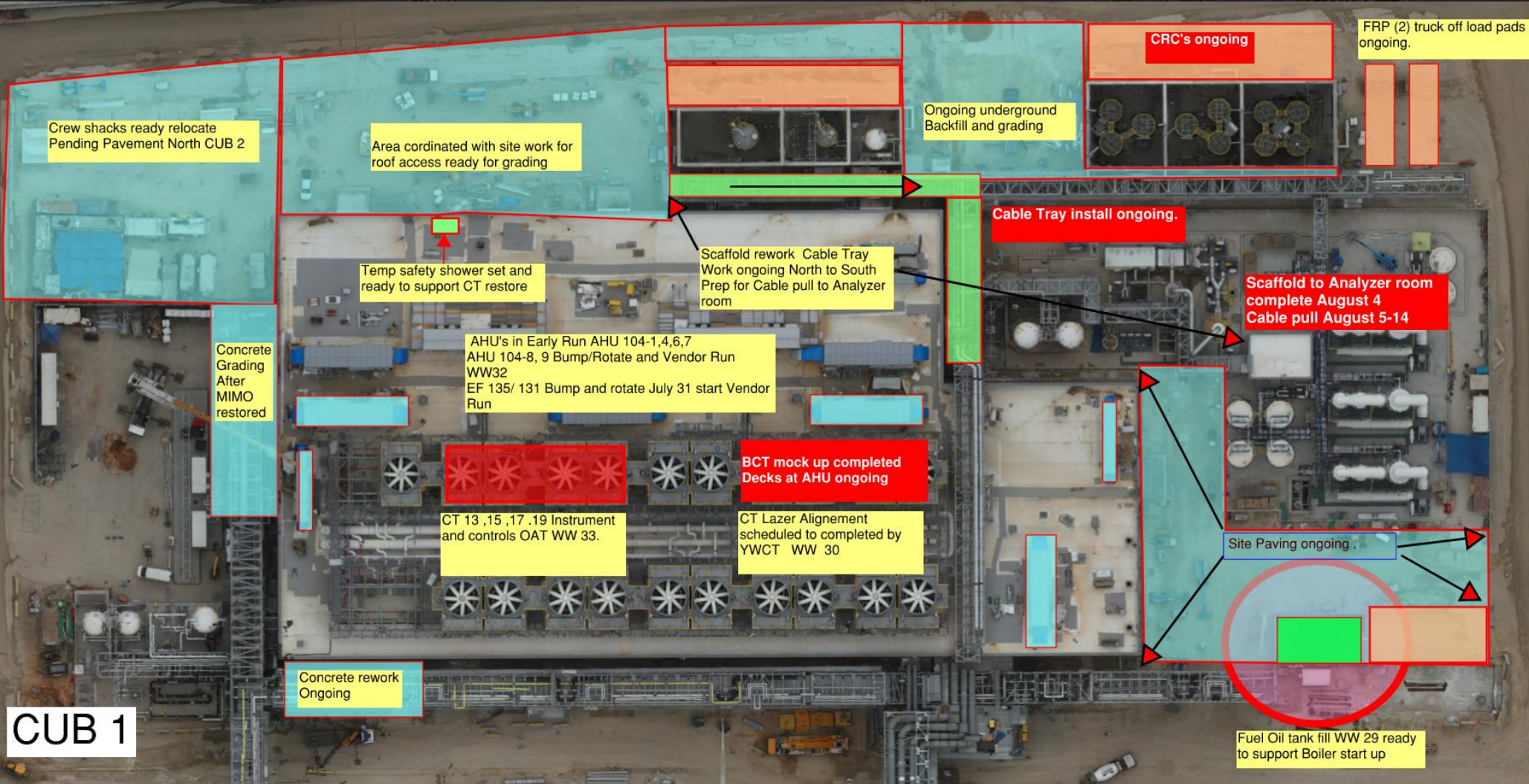
CHEM STAGING EB100V01 EB100V02 EB100V03 EB100V04 EB100V05 EB100V06 EB100V07 EB100V08 EB100V09 EB100V10 EB100V11 EB100V12 EB100V13 EB100V14 EB100V15 EB100V16 EB100V17 EB100V18 EB100V19 EB100V20 EB100V21 EB100V22 EB100V23 EB100V24 EB100V25 EB100V26 EB100V27 EB100V28 EB100V29 EB100V30 EB100V31 EB100V32 EB100V33 EB100V34 EB100V35 EB100V36 EB100V37 EB100V38 EB100V39 EB100V40 EB100V41 EB100V42 EB100V43 EB100V44 EB100V45 EB100V46 EB100V47 EB100V48 EB100V49 EB100V50 EB100V51 EB100V52 EB100V53 EB100V54 EB100V55 EB100V56 EB100V57 EB100V58 EB100V59 EB100V60 EB100V61 EB100V62 EB100V63 EB100V64 EB100V65 EB100V66 EB100V67 EB100V68 EB100V69 EB100V70 EB100V71 EB100V72 EB100V73 EB100V74 EB100V75 EB100V76 EB100V77 EB100V78 EB100V79 EB100V80 EB100V81 EB100V82 EB100V83 EB100V84 EB100V85 EB100V86 EB100V87 EB100V88 EB100V89 EB100V90 EB100V91 EB100V92 EB100V93 EB100V94 EB100V95 EB100V96 EB100V97 EB100V98 EB100V99 EB100V100

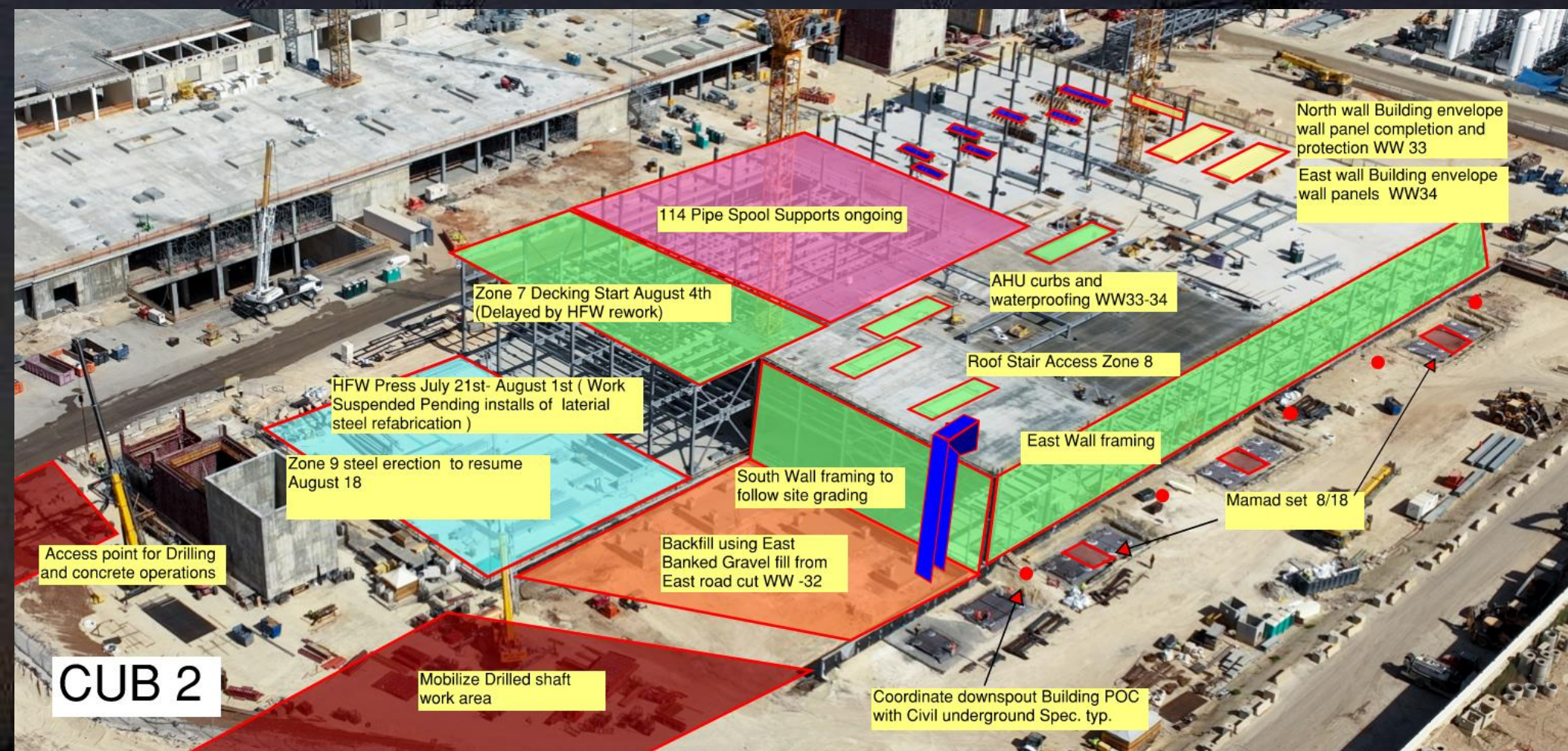
DW 2 EB00V-DW02

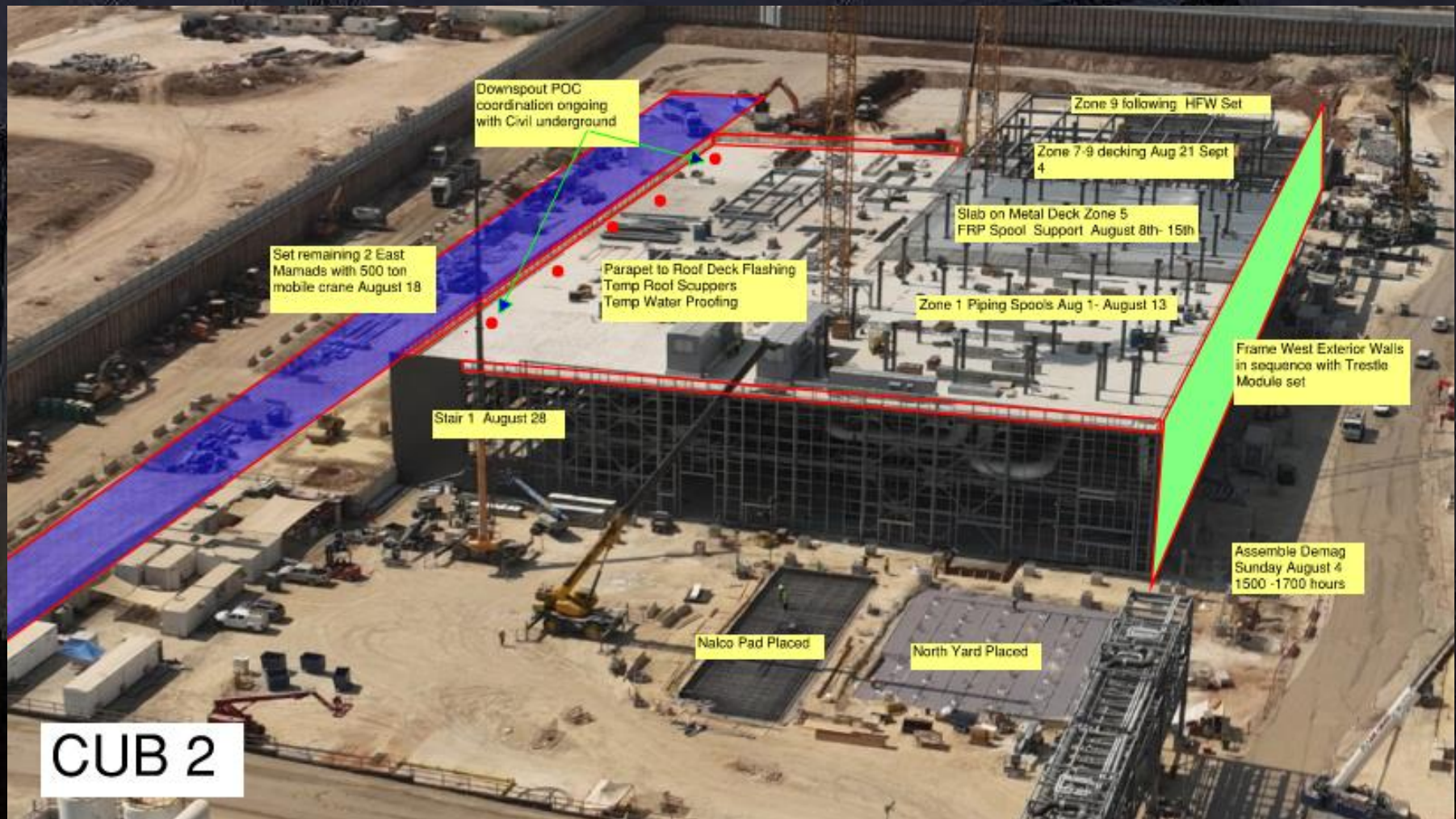
FIRE RISER EB100V01 EB100V02 EB100V03 EB100V04 EB100V05 EB100V06 EB100V07 EB100V08 EB100V09 EB100V10 EB100V11 EB100V12 EB100V13 EB100V14 EB100V15 EB100V16 EB100V17 EB100V18 EB100V19 EB100V20 EB100V21 EB100V22 EB100V23 EB100V24 EB100V25 EB100V26 EB100V27 EB100V28 EB100V29 EB100V30 EB100V31 EB100V32 EB100V33 EB100V34 EB100V35 EB100V36 EB100V37 EB100V38 EB100V39 EB100V40 EB100V41 EB100V

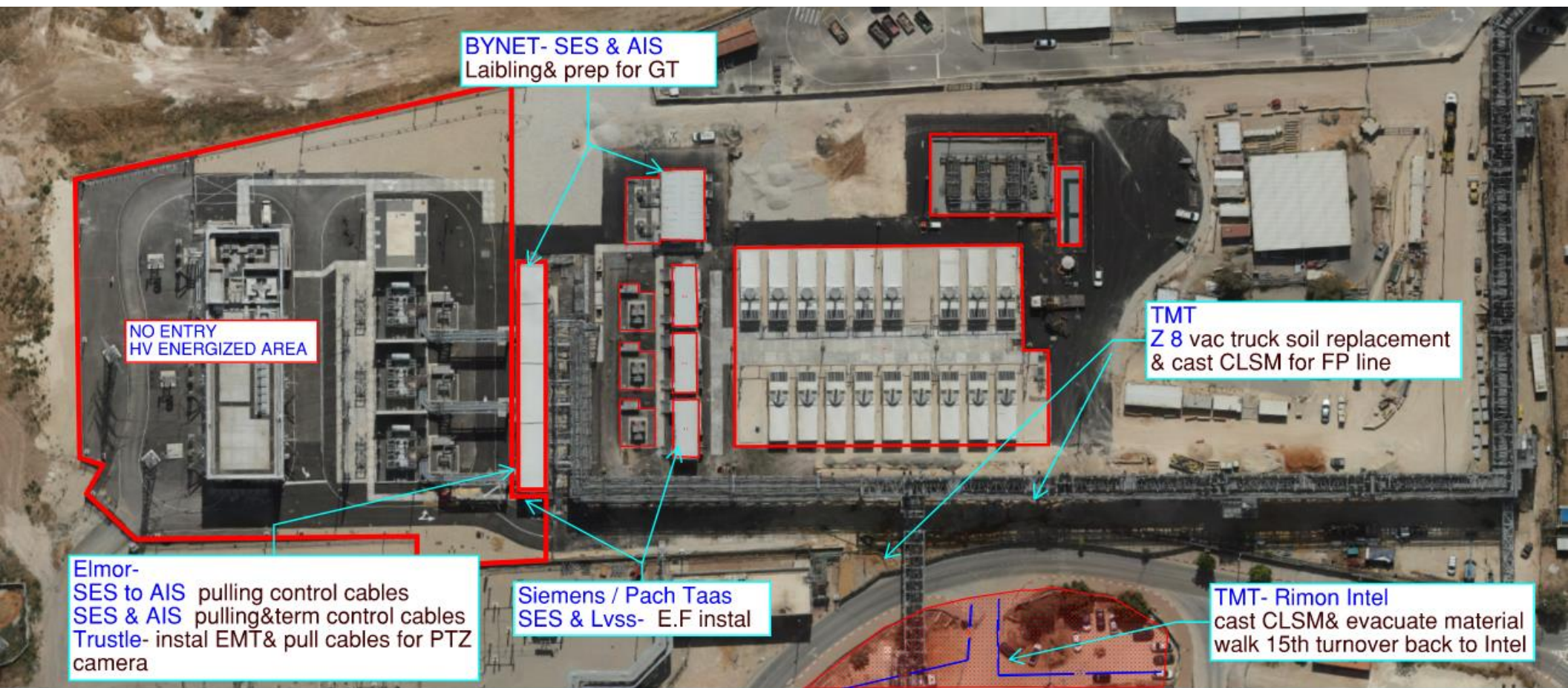












BYNET- SES & AIS
Laibling& prep for GT

NO ENTRY
HV ENERGIZED AREA

Elmor-
SES to AIS pulling control cables
SES & AIS pulling&term control cables
Trustle- instal EMT& pull cables for PTZ
camera

Siemens / Pach Taas
SES & Lvss- E.F instal

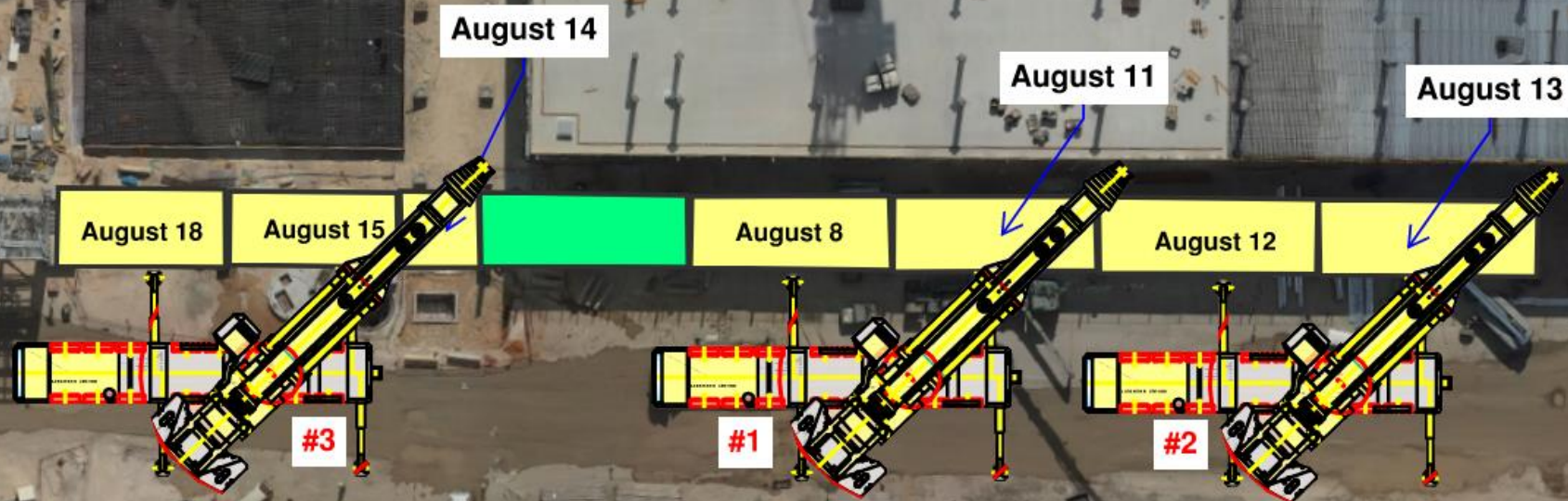
TMT
Z 8 vac truck soil replacement
& cast CLSM for FP line

TMT- Rimon Intel
cast CLSM& evacuate material
walk 15th turnover back to Intel



Trestle - MOD 2 Steel erection

T-17 Lvl 1



Trestle - MOD 2 Steel erection

T-17 Lvl 2

August 19

August 25

August 27

August 21

August 20

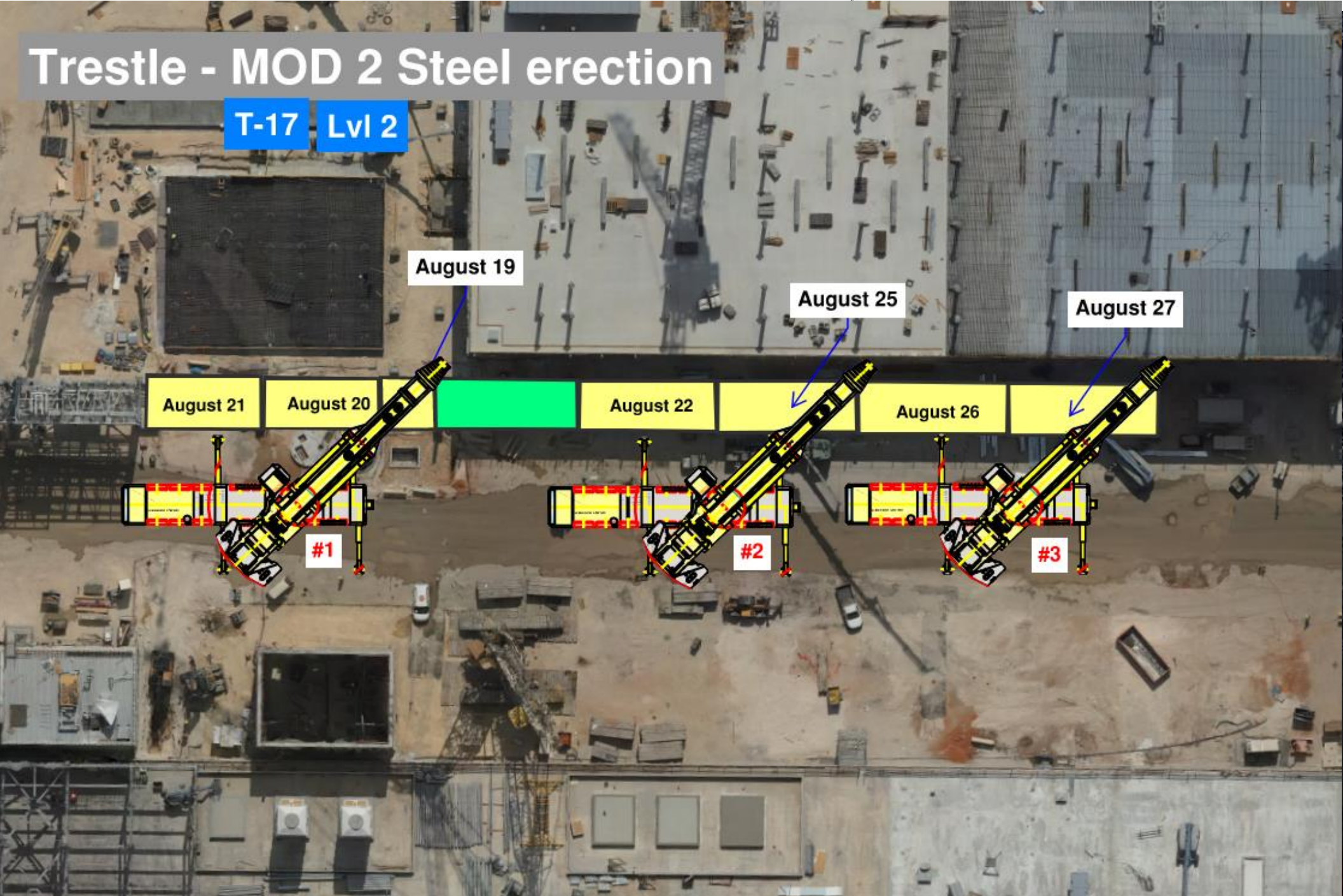
August 22

August 26

#1

#2

#3



BSGS

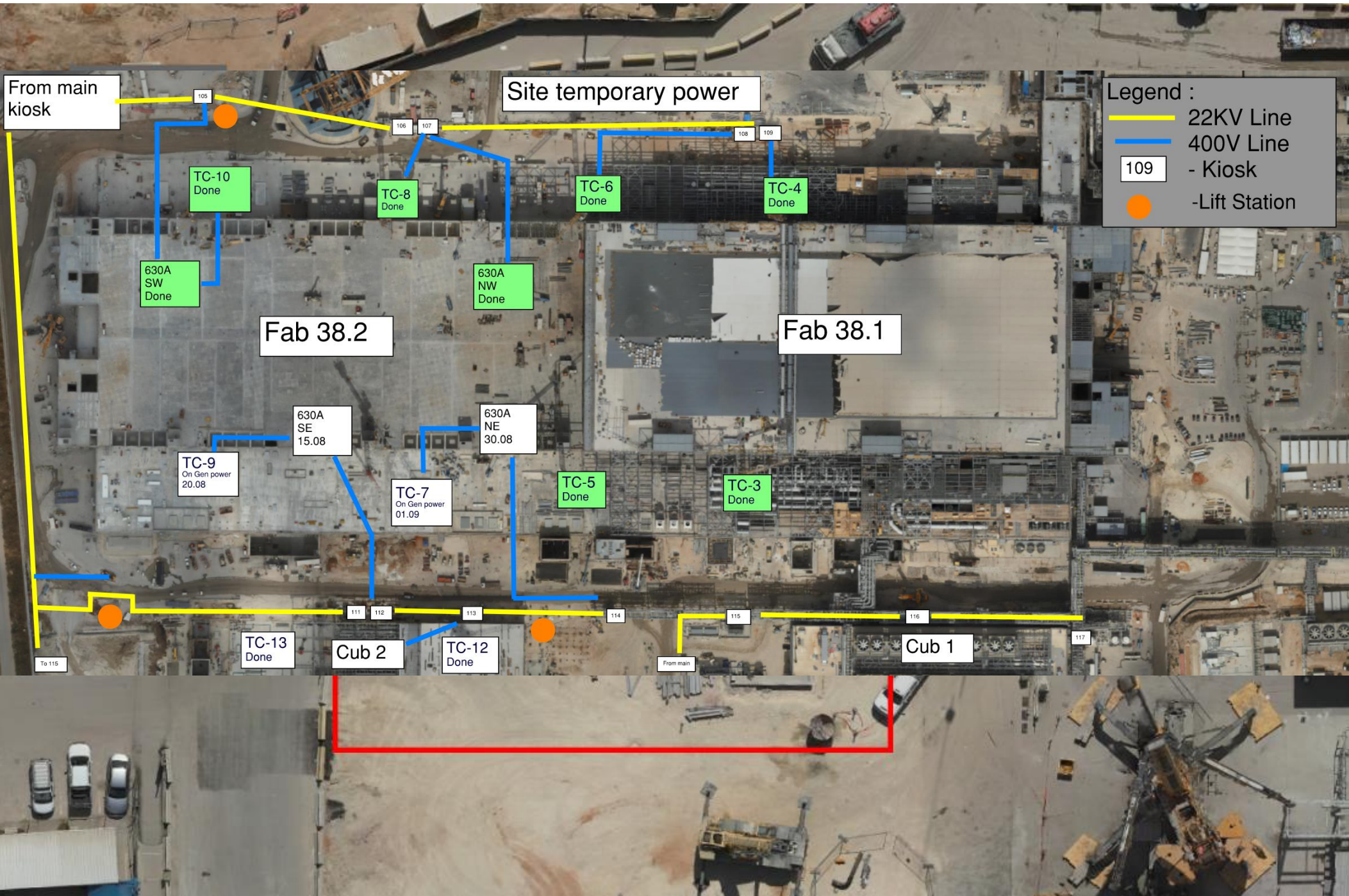


TRESTLE

Lesico 12" natural gas pipe pressure test exclusion zone

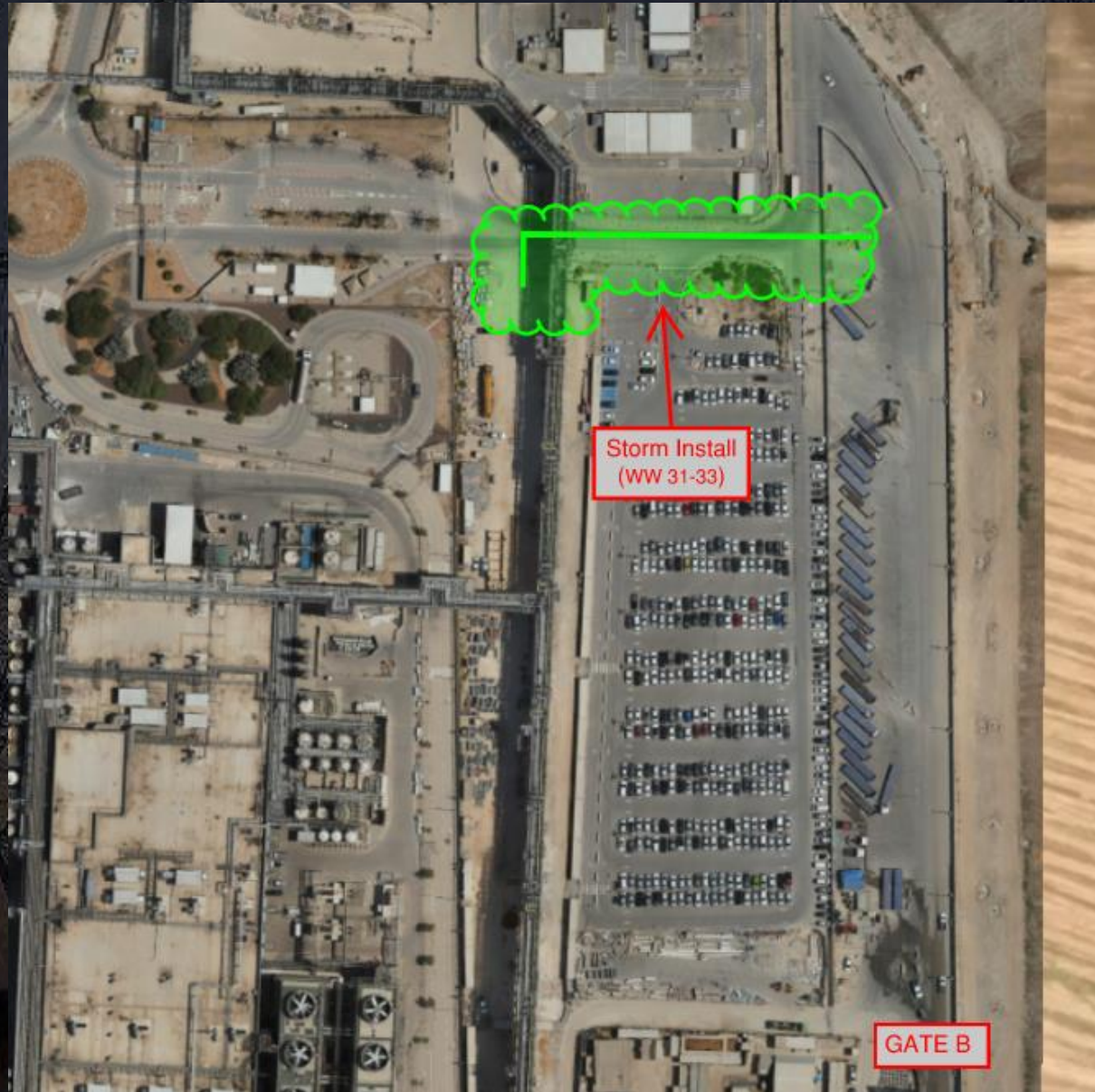
Wednesday, August 21st 1800 -Thursday, Aug 22nd 0100





Daily Coordination Meeting

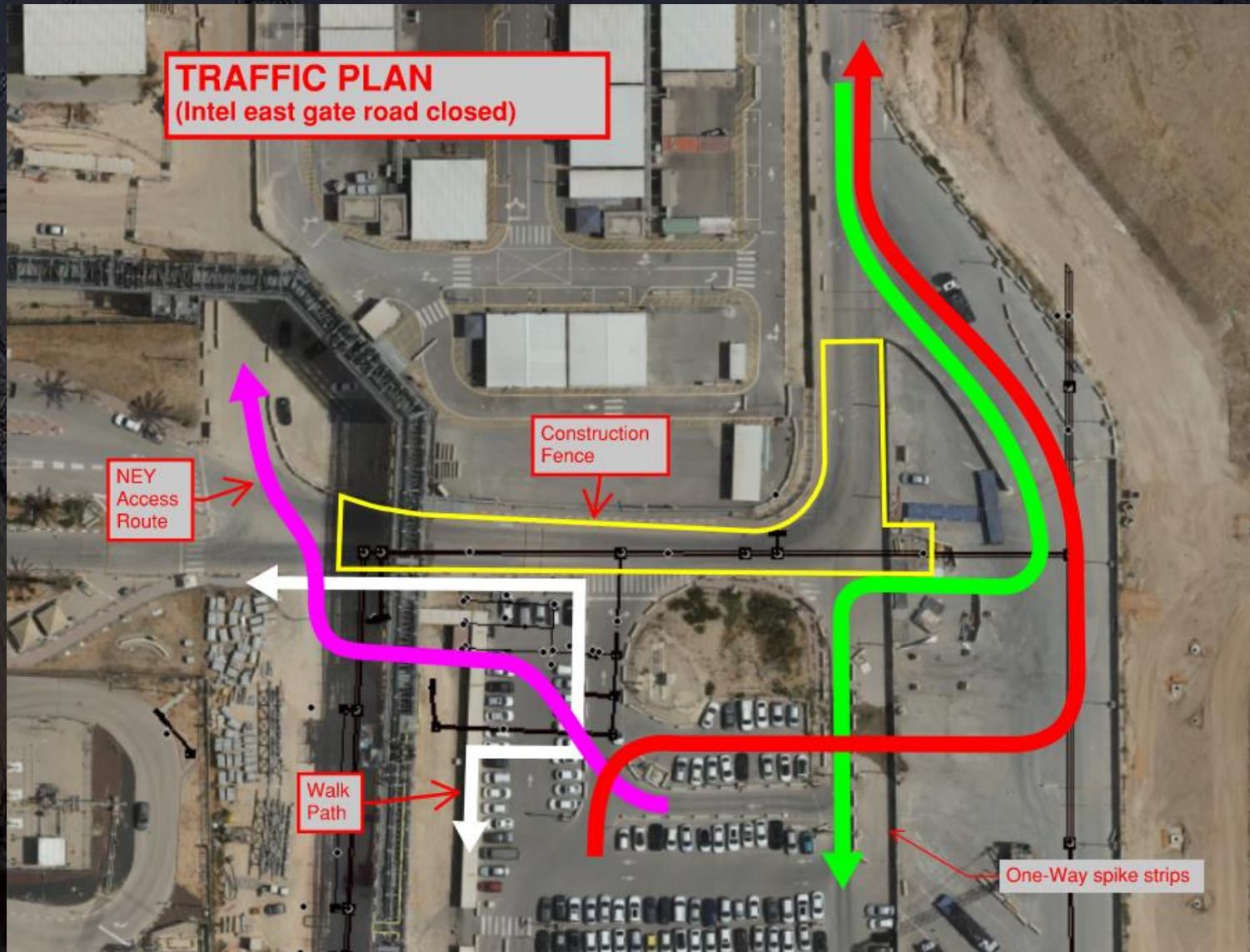
Site Logistics
North Gate B



Daily Coordination Meeting

Site Logistics

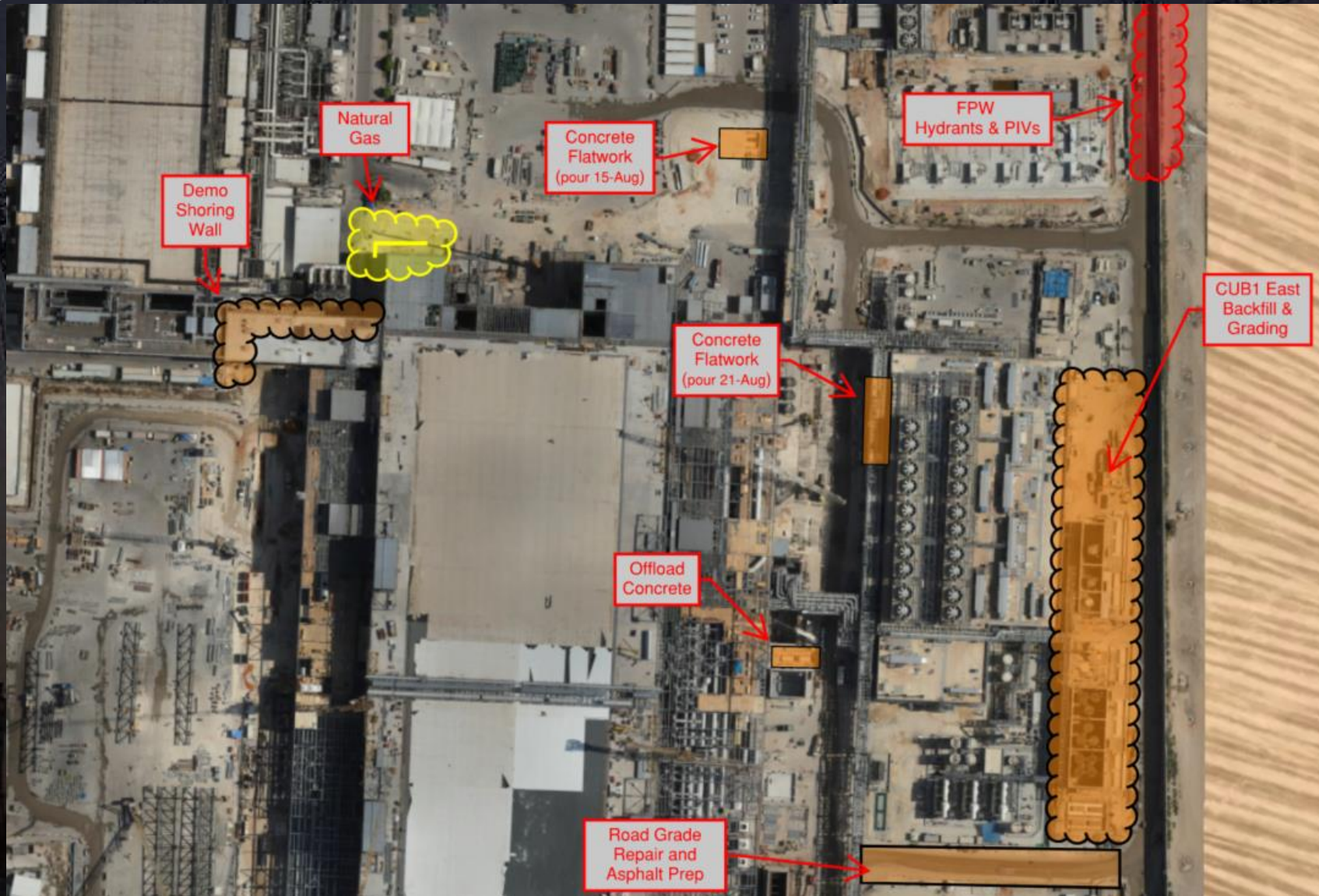
Traffic Plan



Daily Coordination Meeting

Site Logistics

North



Daily Coordination Meeting

Site Logistics

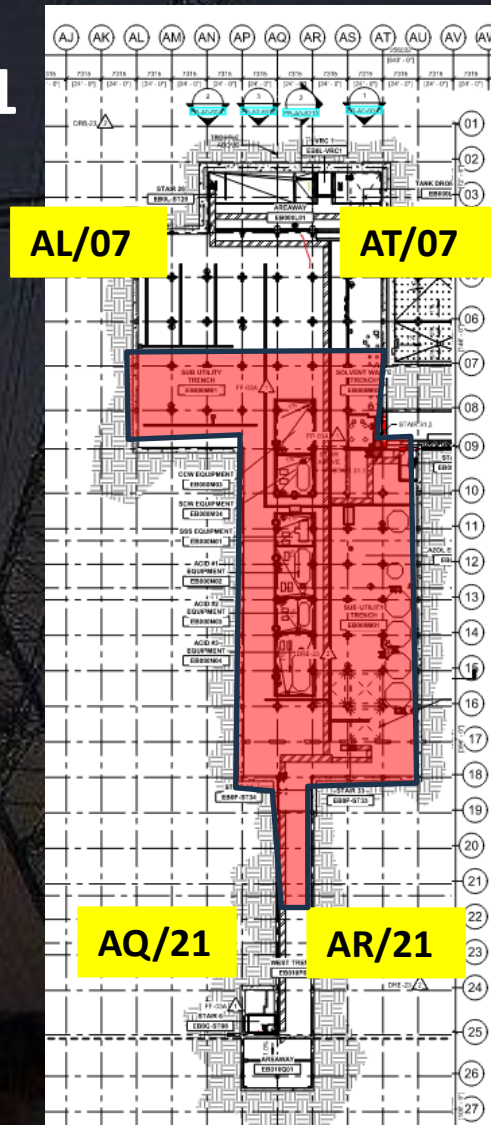
South



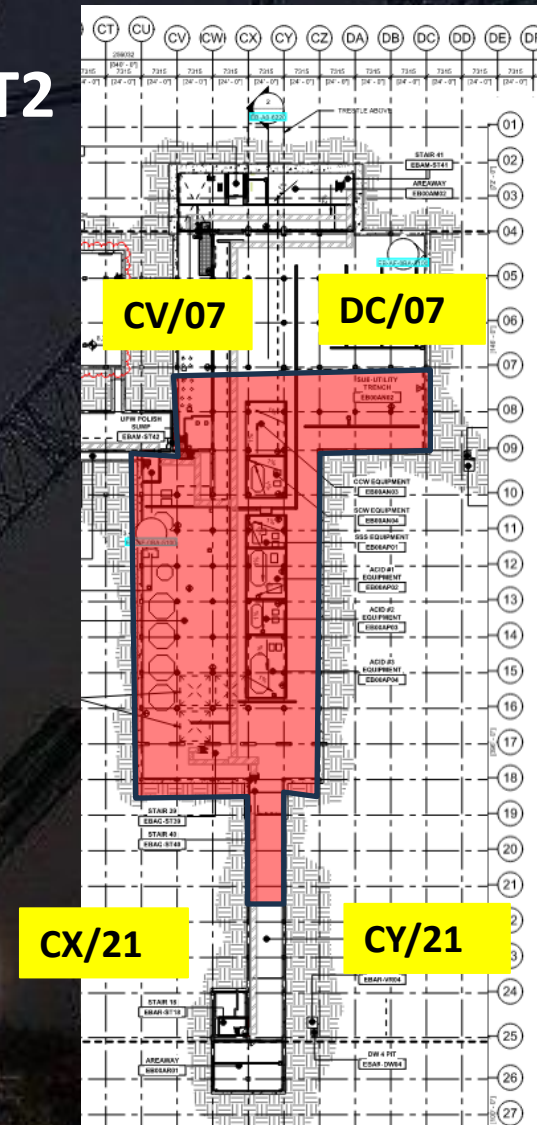
Daily Coordination Meeting

Site Logistics - Protected Areas (SUT Level)

SUT1

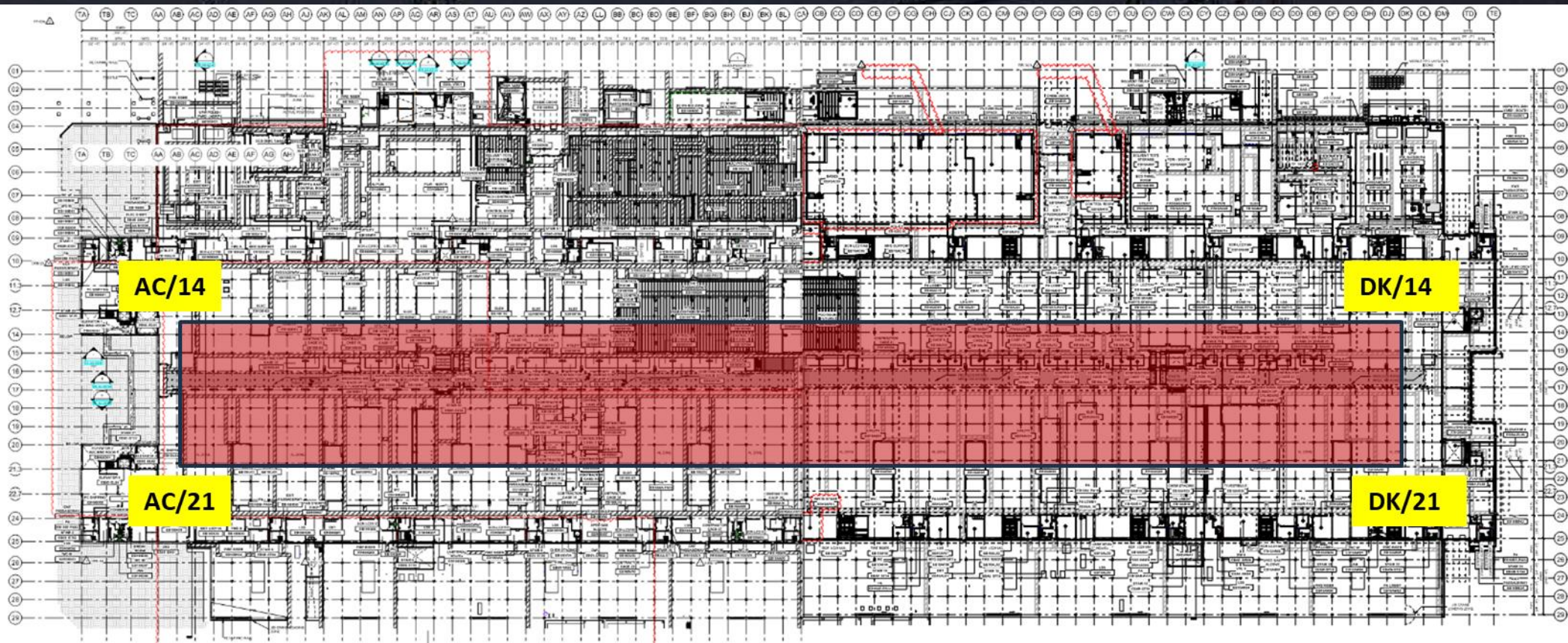


SUT2



Daily Coordination Meeting

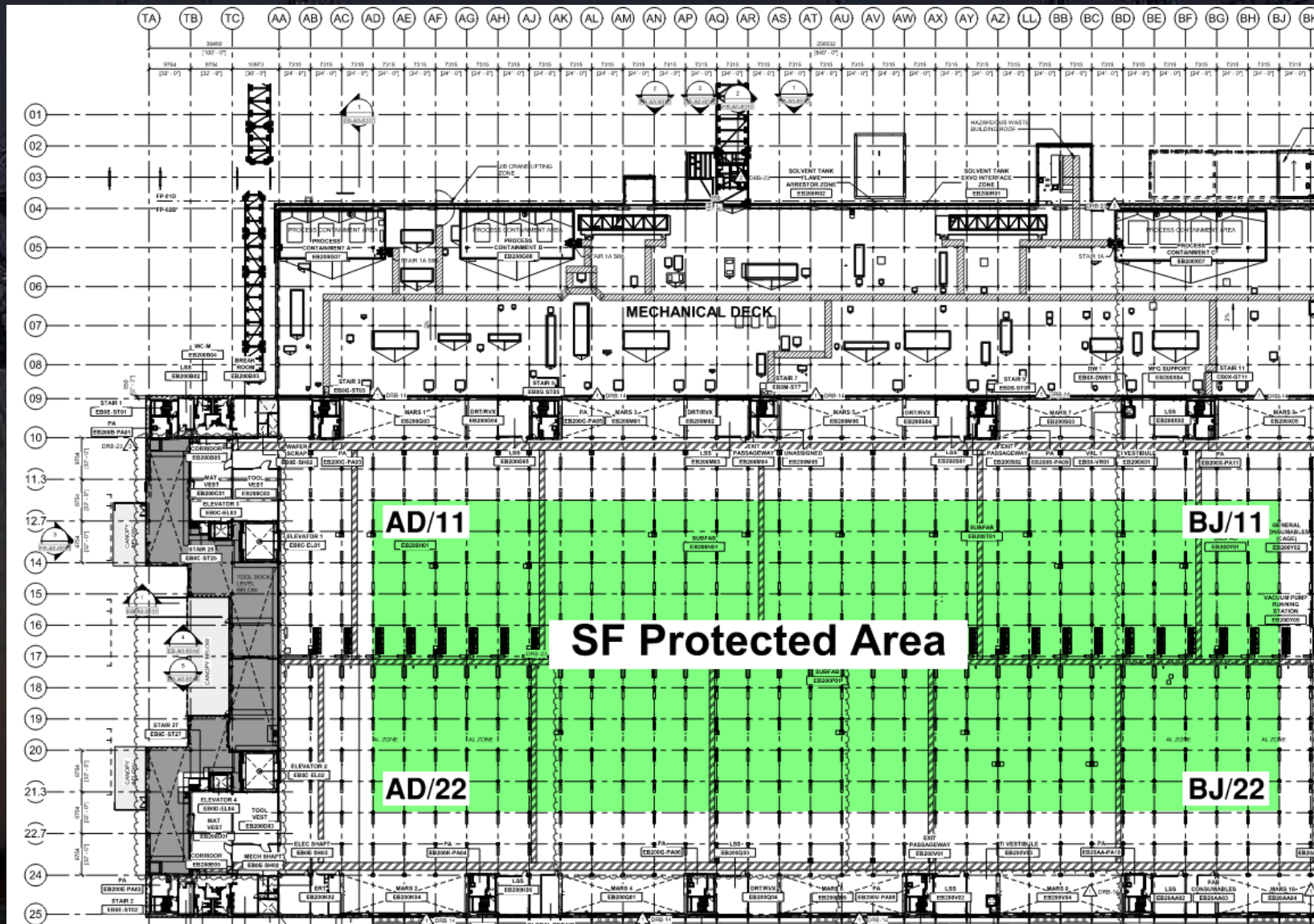
Site Logistics - Protected Areas (Utility Level)





Daily Coordination Meeting

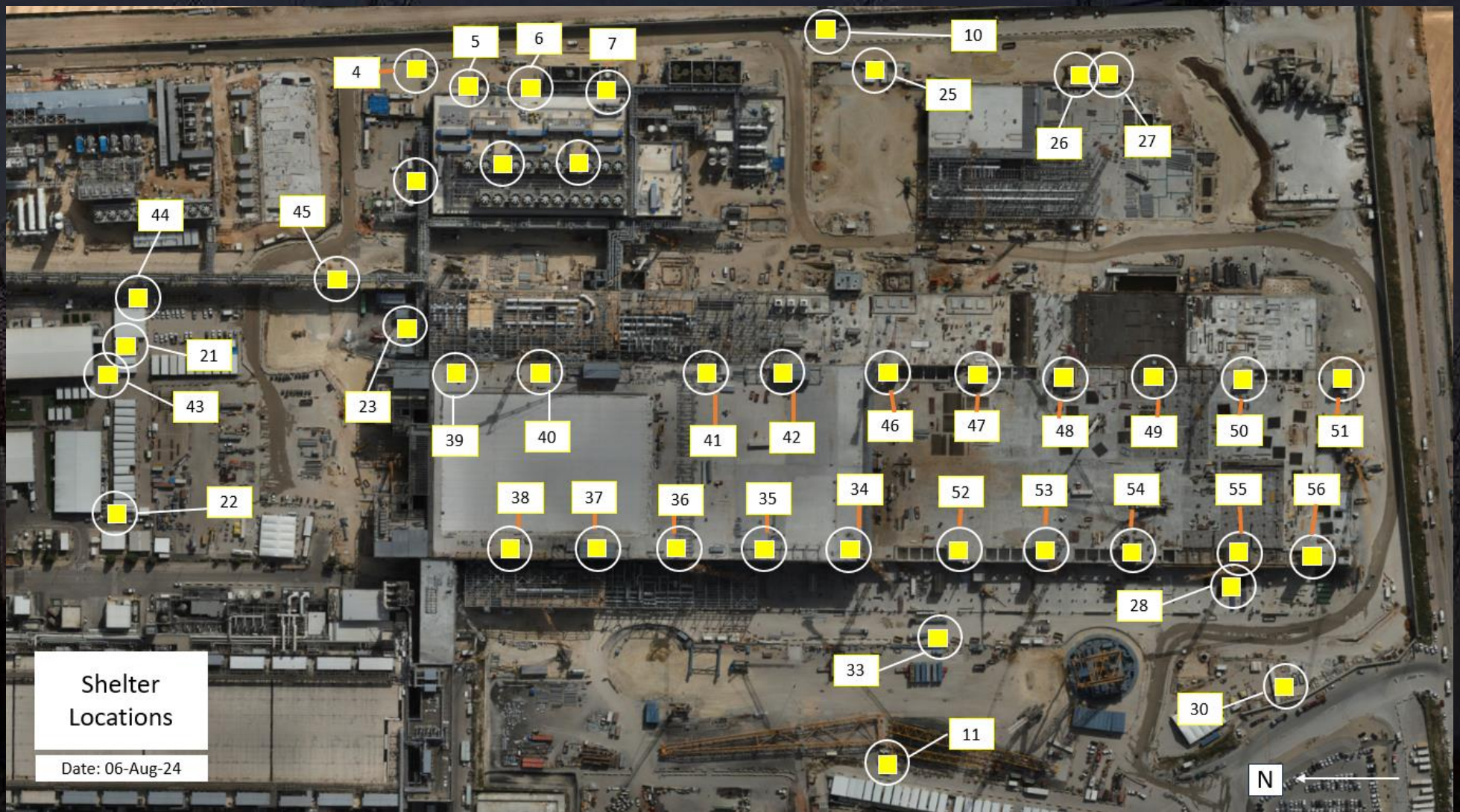
Site Logistics - Protected Areas (Subfab Level)



Daily Coordination Meeting

Site Logistics

Protected Areas



Daily Coordination Meeting

WATER BOTTLE FILLING & PERSONNEL COOLING STATIONS

BF (1) AT GIS



Deep Cleaning of Break Tent B on Friday 16th Aug



Assume All Systems Live Until Proven Otherwise

- Today we had a worker cut into a pressurized line. This created a projectile that, thankfully, did not hit the worker.
- Every pipe, wire, cable, hose, piece of equipment etc. on this project is to be assumed live. This means that we plan our work as though we **KNOW** the system/equipment is under pressure, or is electrified, or running.
- We **DO NOT** perform work on cables, wires, hoses, pipes, pieces of equipment, etc. that are live.
- Before we perform any work on a system that **COULD BE** live, we must **VERIFY** that it has been de-energized, then we need to locate where energy could be introduced, and the system must be locked out and tagged out before we start our work. This is for **ANY** system that has the potential to be live.
- The HCC LOTO permit must be completed and the worker performing the work must have LOTO training.

Stop and Think- We've Got the Power

Subs that HAVE NOT completed a
Stop and Think

Afcon Control and Automation
Atkor
Avi Cranes
Belfor
Binyan Haretz
Chemo Aharon
EL Fire Proof
Electra
Elram
ETC system
Katz Arie Stainless Steel
Ludan
Megason Electric
Newco-Tech
Siemens Industrial
Skyline Cranes & Technologies
W&W - AFCO Steel LLC





Complete 1 per day





Heat Index- August 14th

	temperature (°F)																
	80	82	84	86	88	90	92	94	96	98	100	102	104	106	108	110	
Relative Humidity (%)	40	80	81	83	85	88	91	94	97	101	105	109	114	119	124	130	136
	45	80	82	84	87	89	93	96	100	104	109	114	119	124	130	137	
	50	81	83	85	88	91	95	99	103	108	113	118	124	131	137		
	55	81	84	86	89	93	97	101	106	112	117	124	130	137			
	60	82	84	88	91	95	100	105	110	116	123	129	137				
	65	82	85	89	93	98	103	108	114	121	128	136					
	70	83	86	90	95	100	105	112	119	126	134						
	75	84	88	92	97	103	109	116	124	132							
	80	84	89	94	100	106	113	121	129								
	85	85	90	96	102	110	117	126	135								
	90	86	91	98	105	113	122	131									
95	86	93	100	108	117	127											
100	87	95	103	112	121	132											

 Caution

 Extreme Caution

 Danger

 Extreme Danger

Extreme Caution

- Ensuring water and shaded areas available
- Acclimating workers
- Emergency planning and response
- Training workers and supervisors on the signs of heat stress and preventative measures
- Modified work schedules and/or rotating out workers
- Monitoring of workers for signs of heat stress

Daily Coordination Meeting



14:00 Sign In