

Daily Coordination Meeting



14:00 Sign In

Daily Coordination Meeting

General Topics:

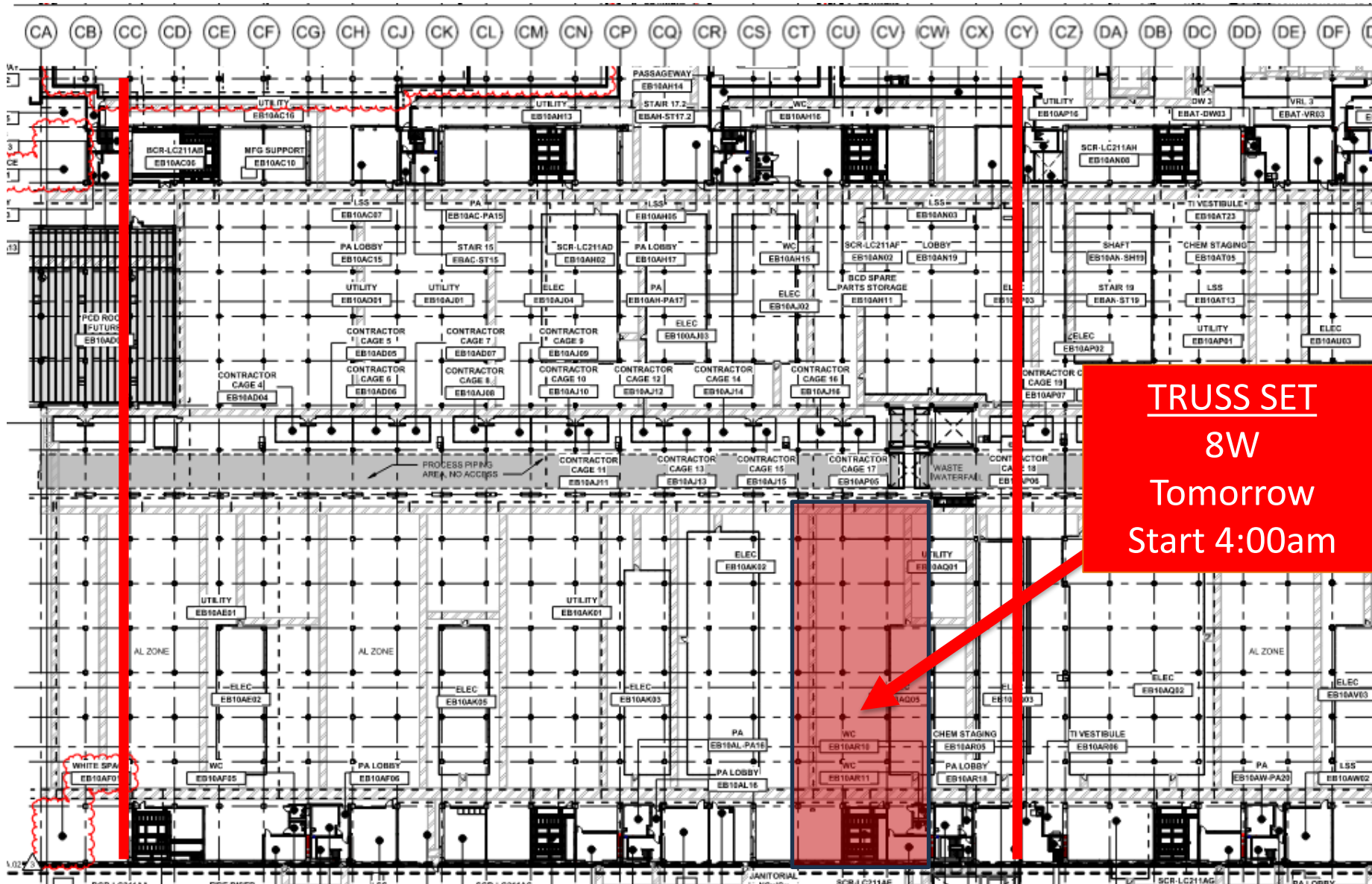
❖ Head in the game



HOFFMAN CONSTRUCTION COMPANY

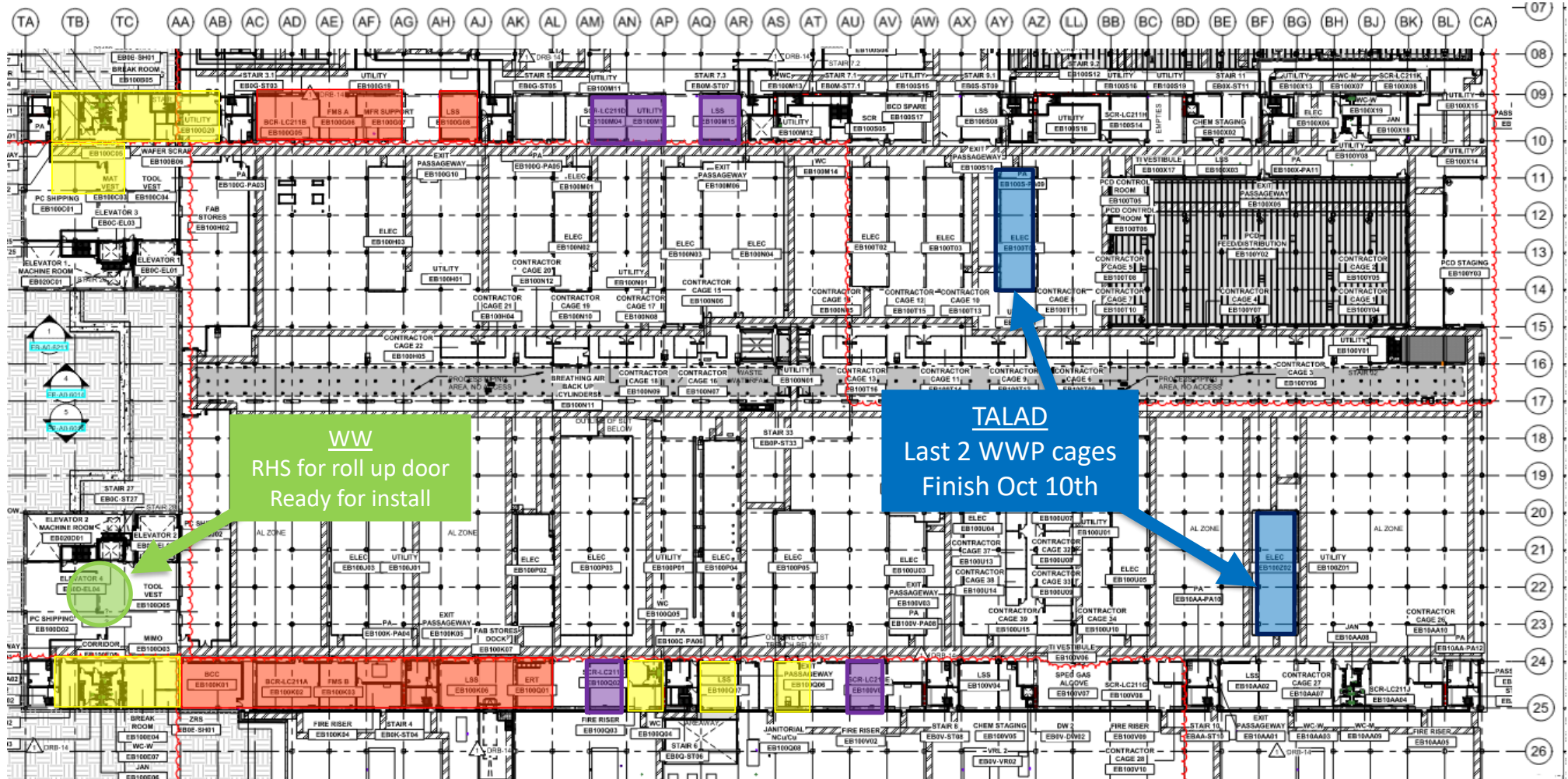


UTILITY LEVEL TRUSS





UTILITY LEVEL MOD1



WW
RHS for roll up door
Ready for install

TALAD
Last 2 WWP cages
Finish Oct 10th

BELFOR
Mold remediation

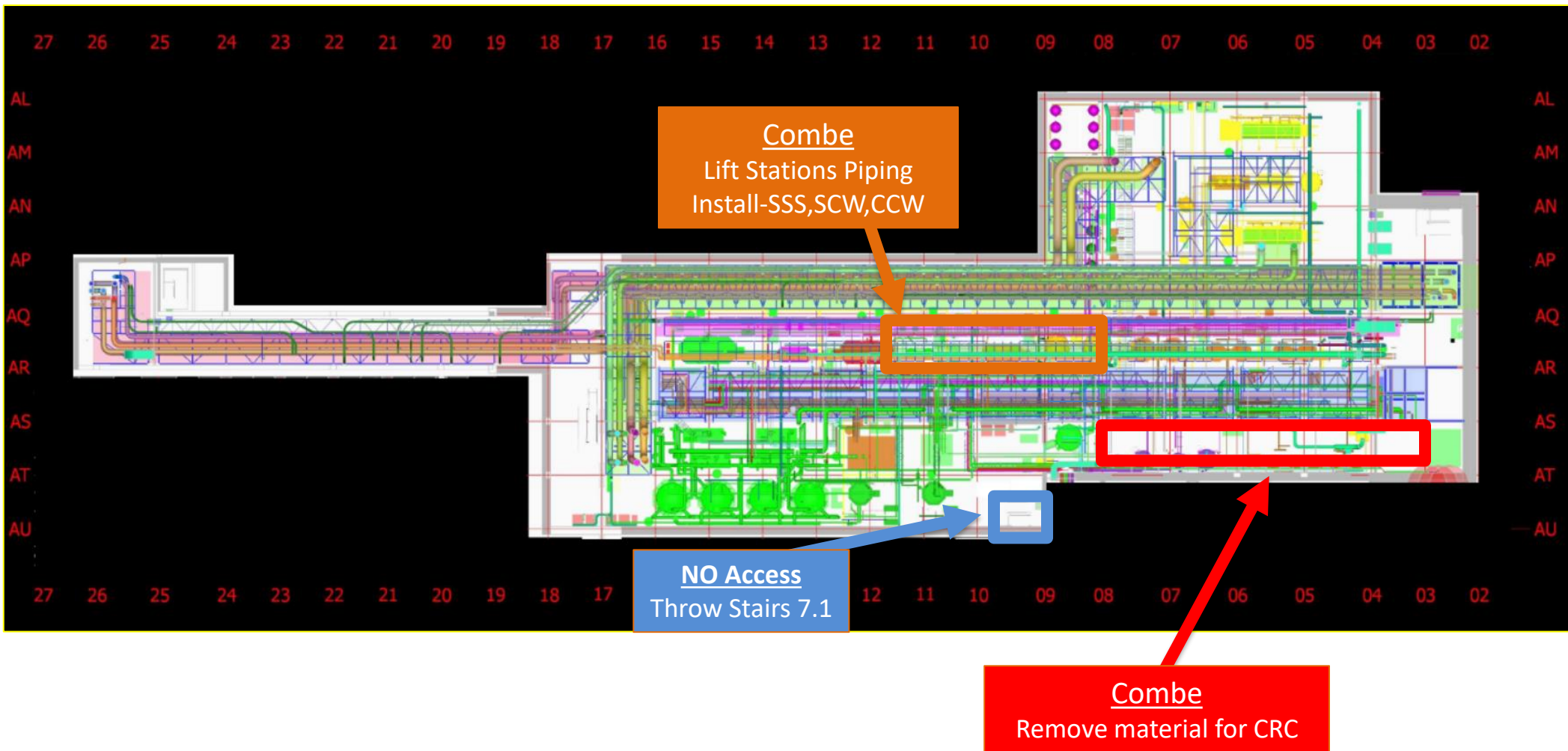
ELRAM
Drywall install

MEP+Electrical
Ready for re-install

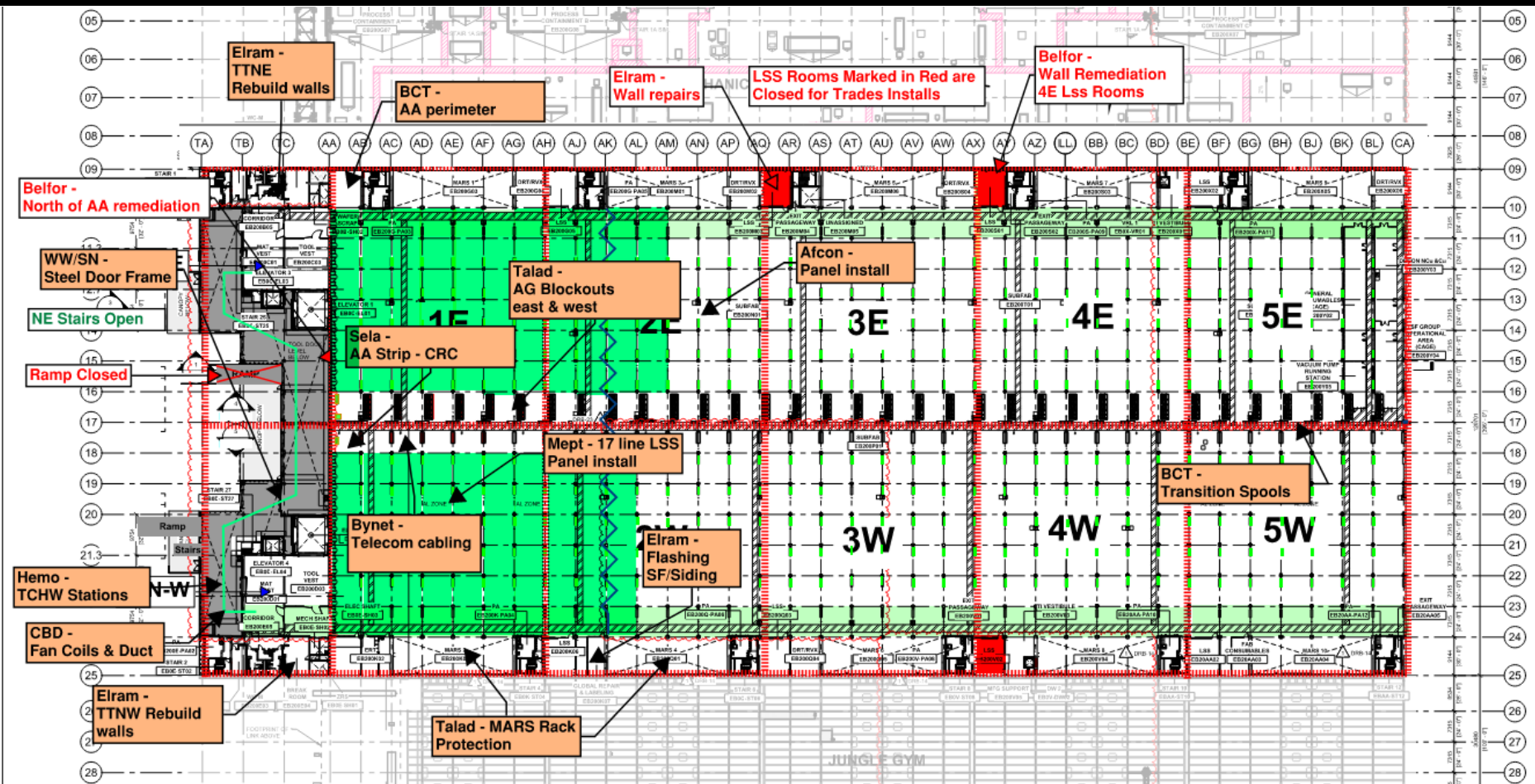




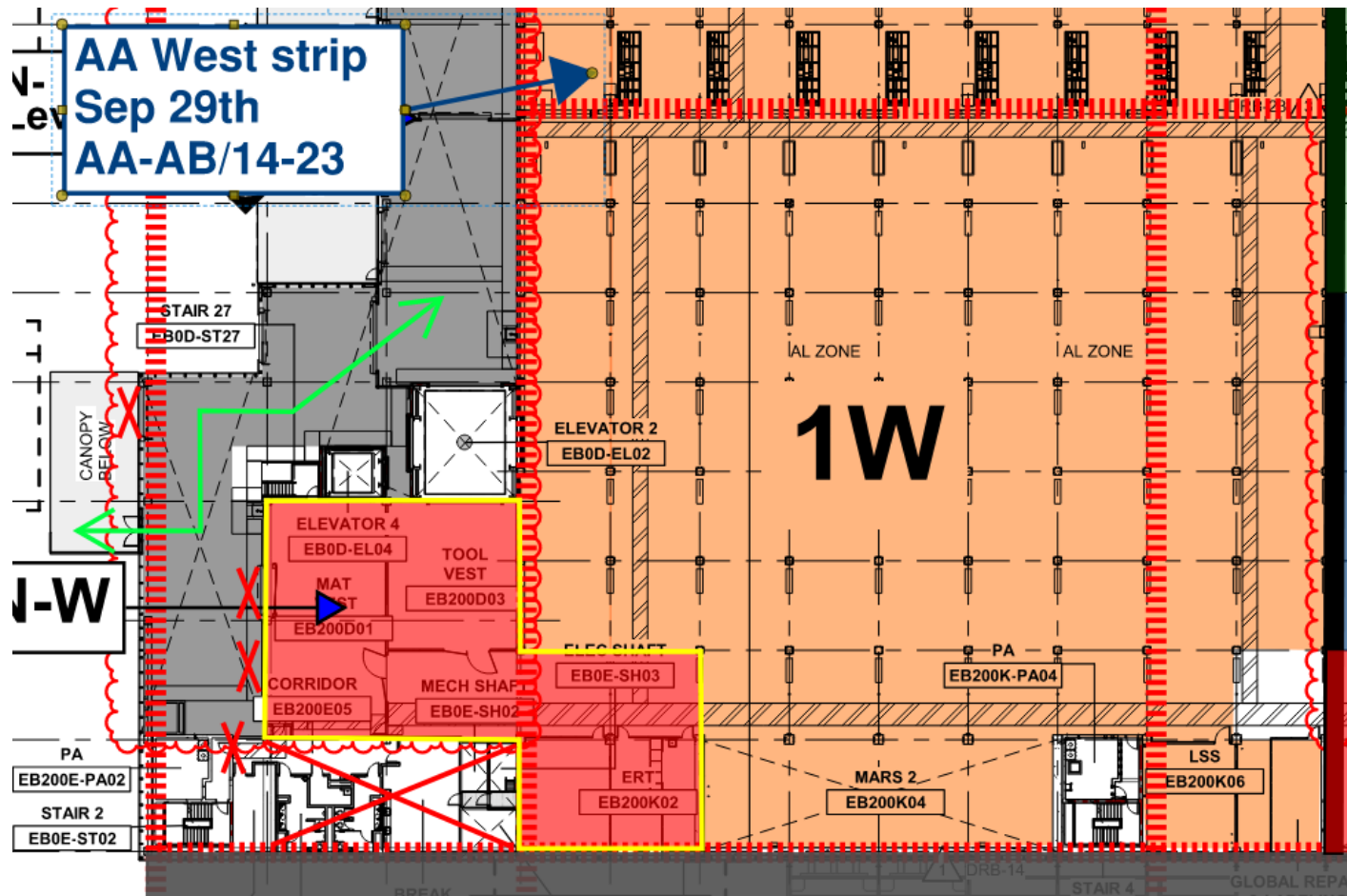
SUT 38.1 LEVEL



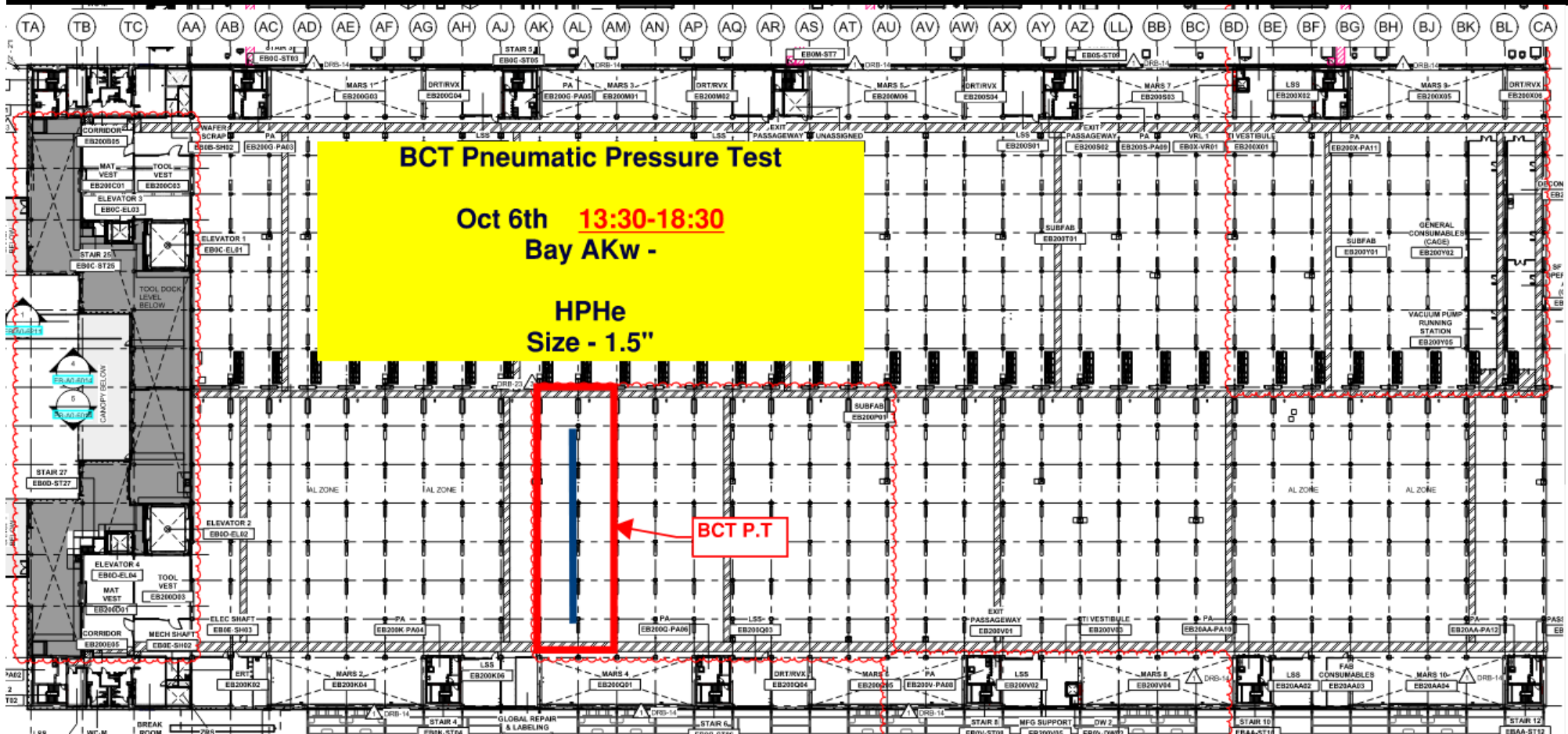
SUBFAB BUILDOUT MOD 1



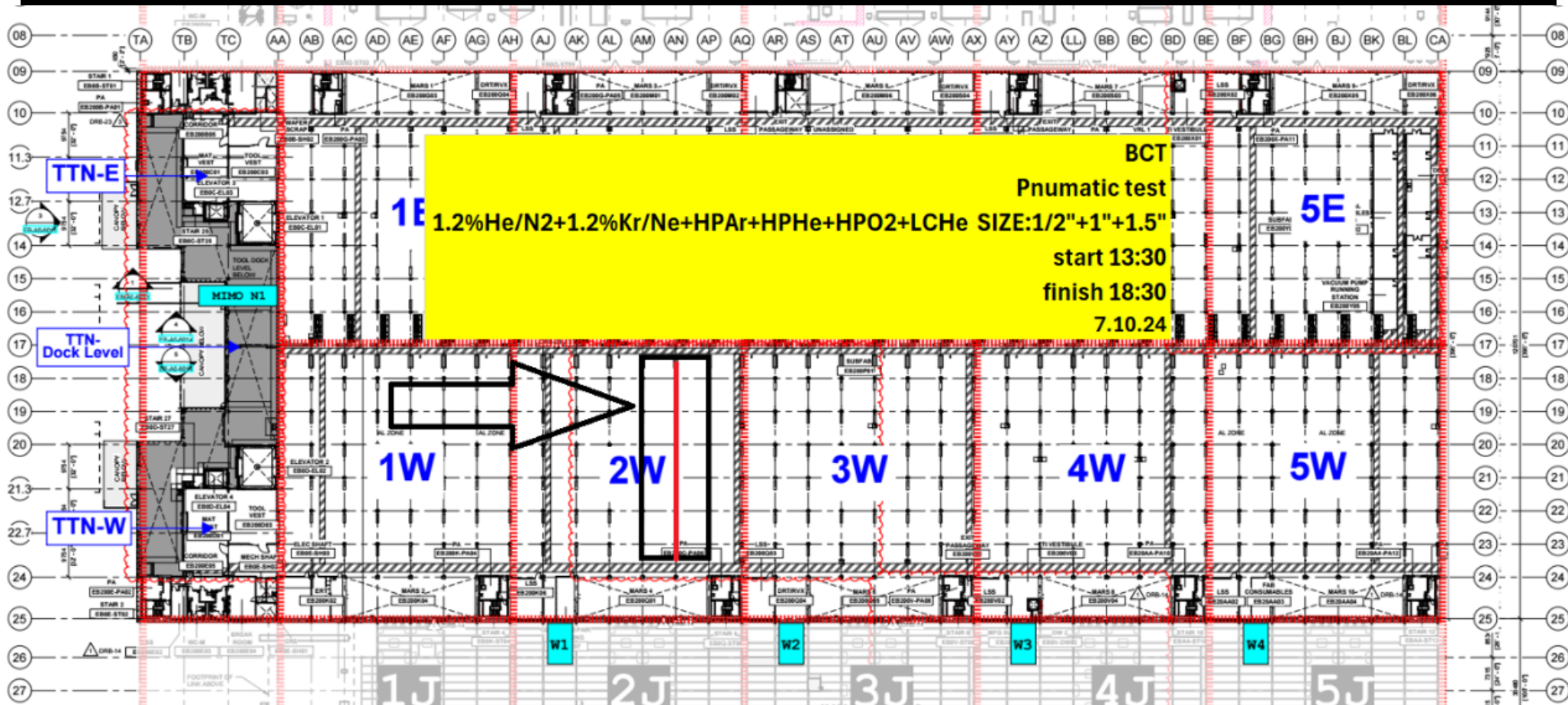
SUBFAB CRC TOPCOAT



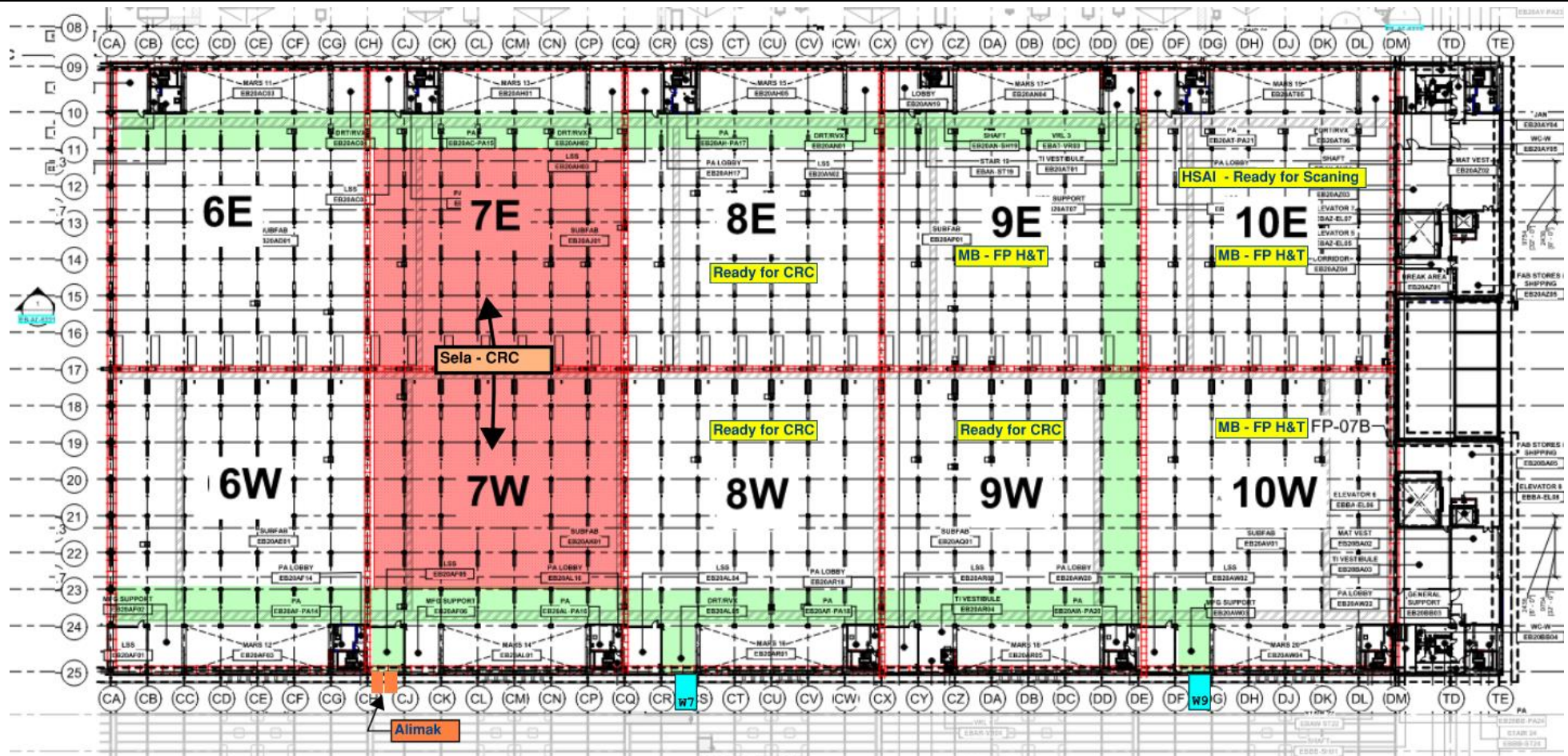
BCT Pressure Test Exclusion Zone



BCT Pressure Test Exclusion Zone



SUBFAB BUILDOUT MOD 2



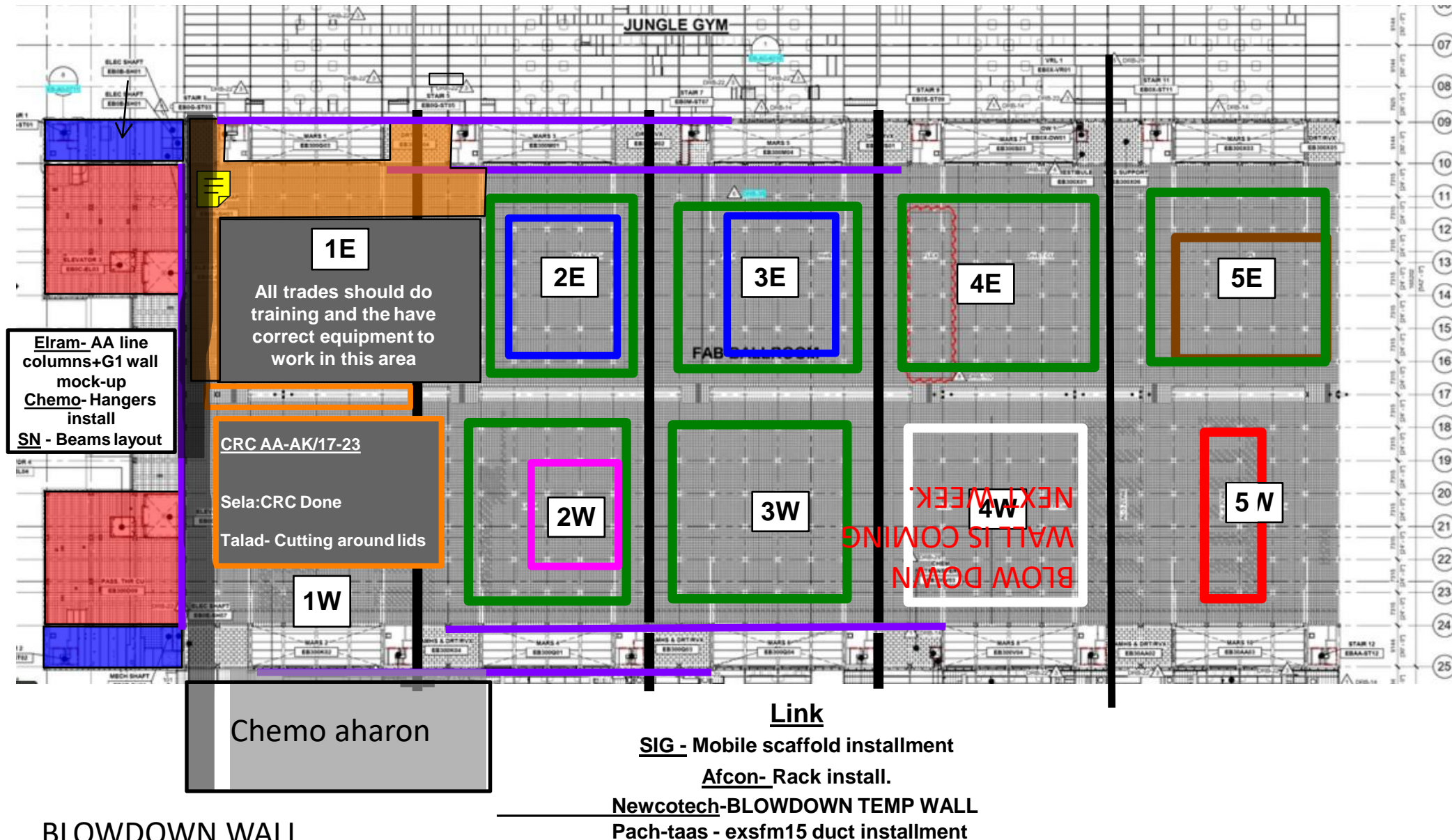
Clean room

protocols apply!!

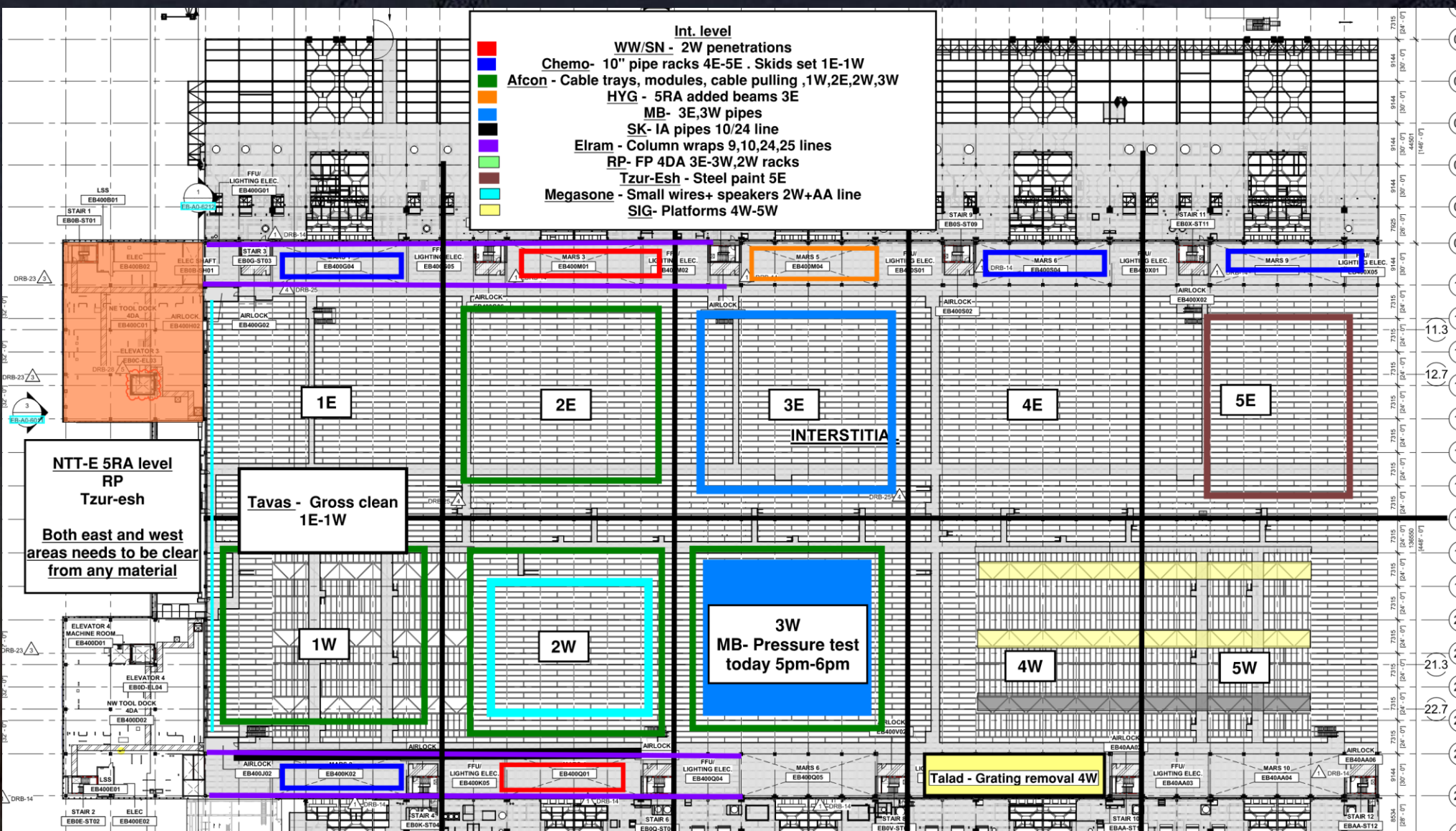
1. only electrical booms & scissors.
2. Booties for all wheels is a must.

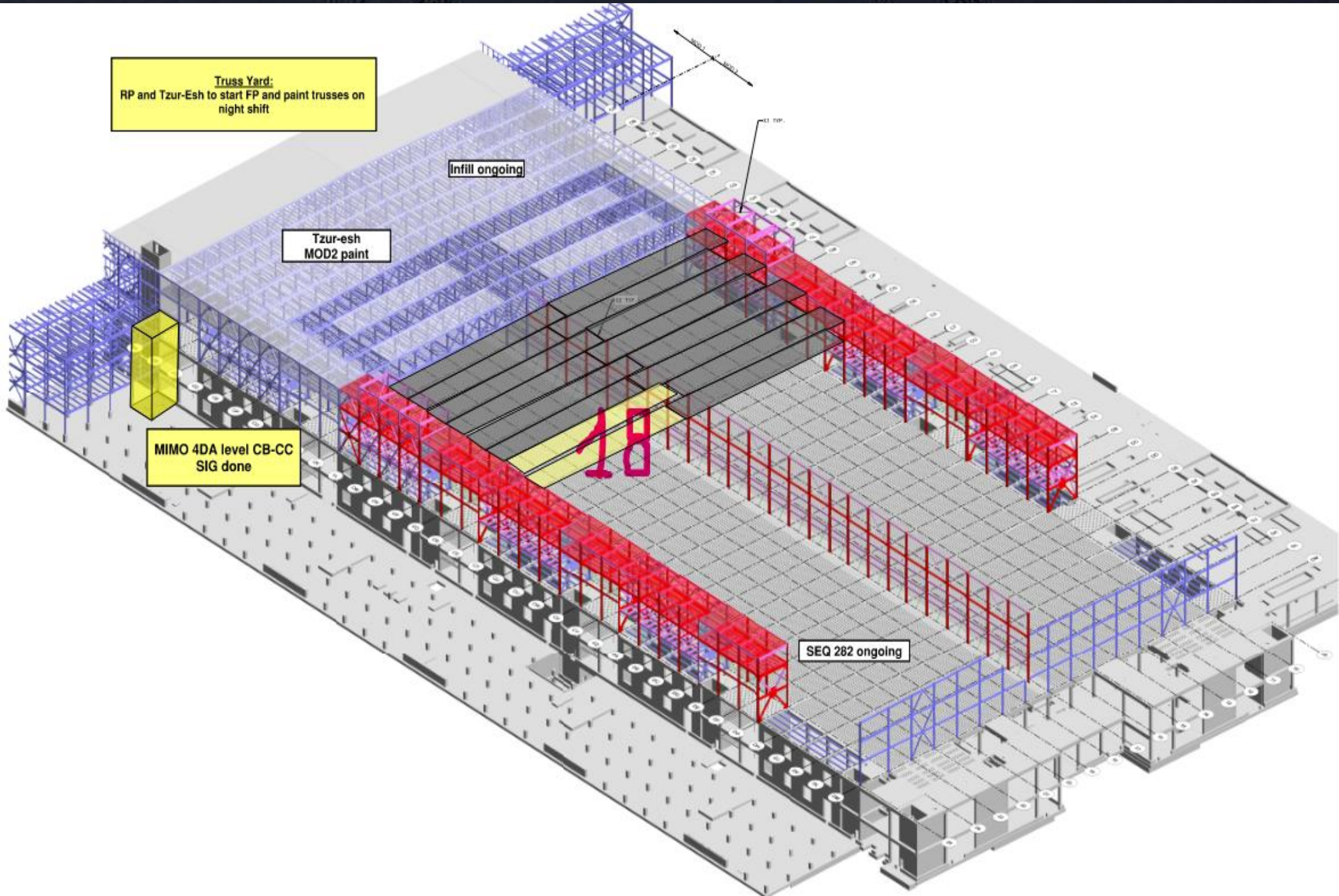
sella crc 1E zone.

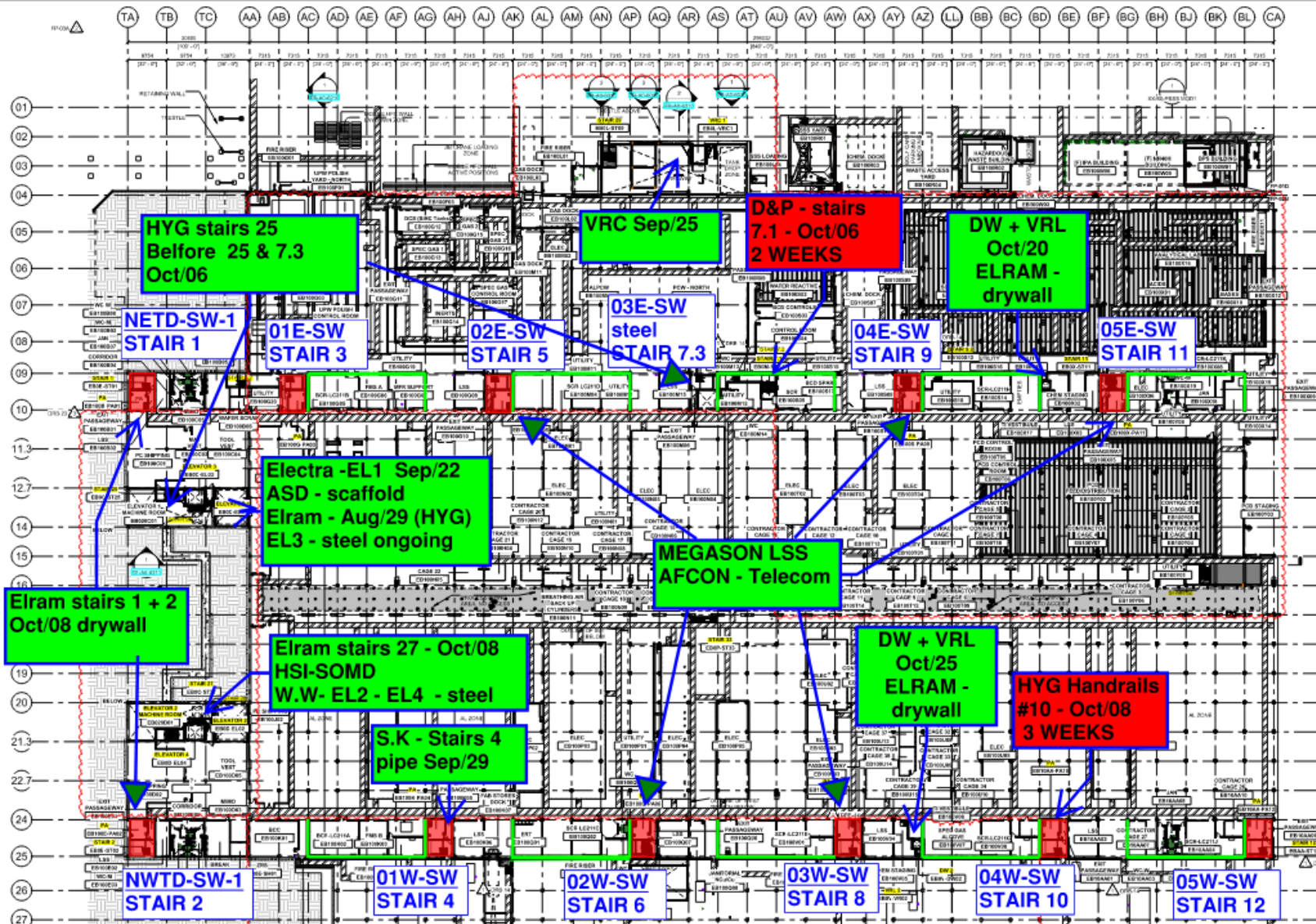
All subs working over head must protect 4da working areas with protective sheets to prevent plaster waste or any other waste from falling down on fresh crc coat

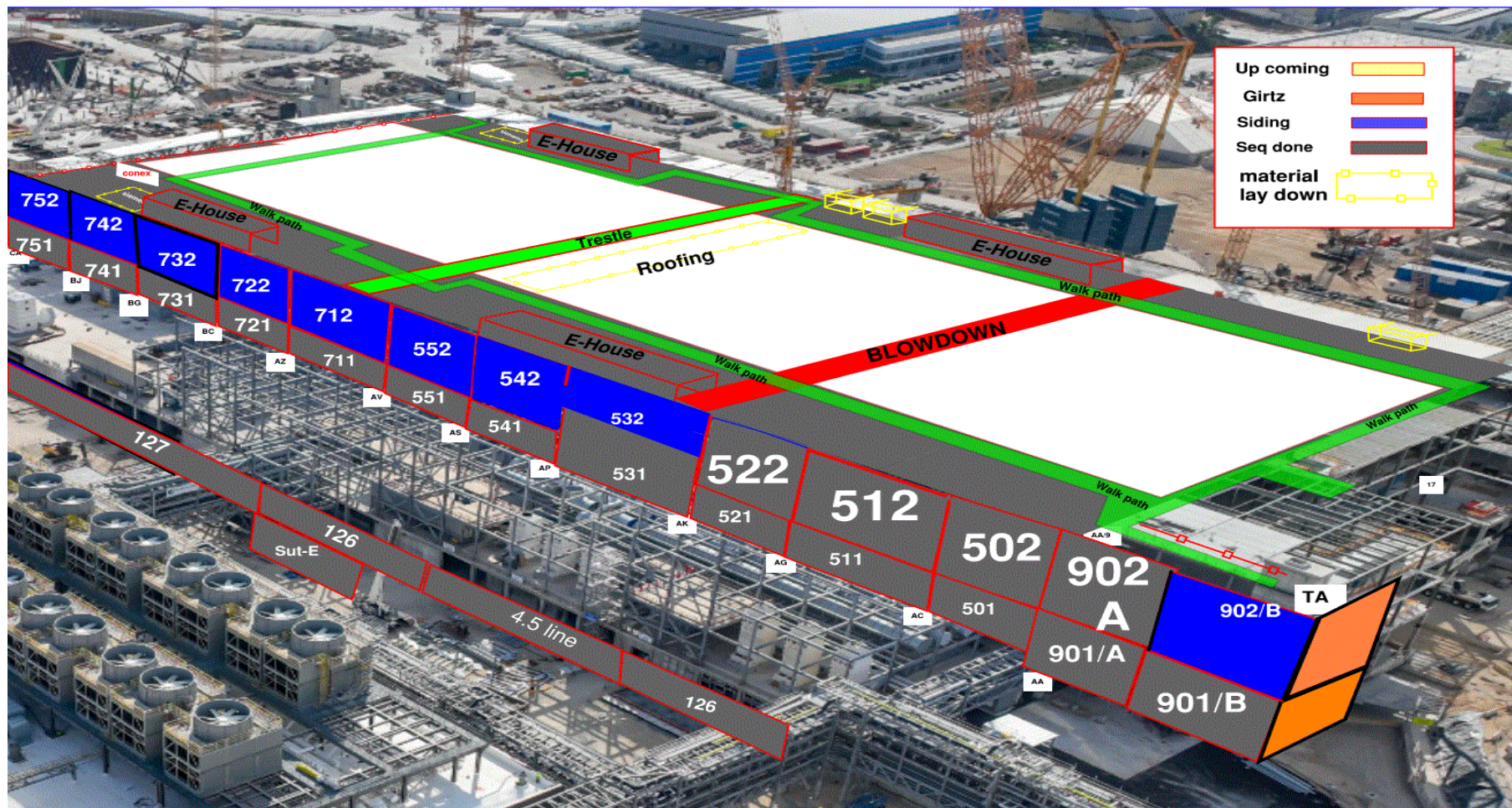


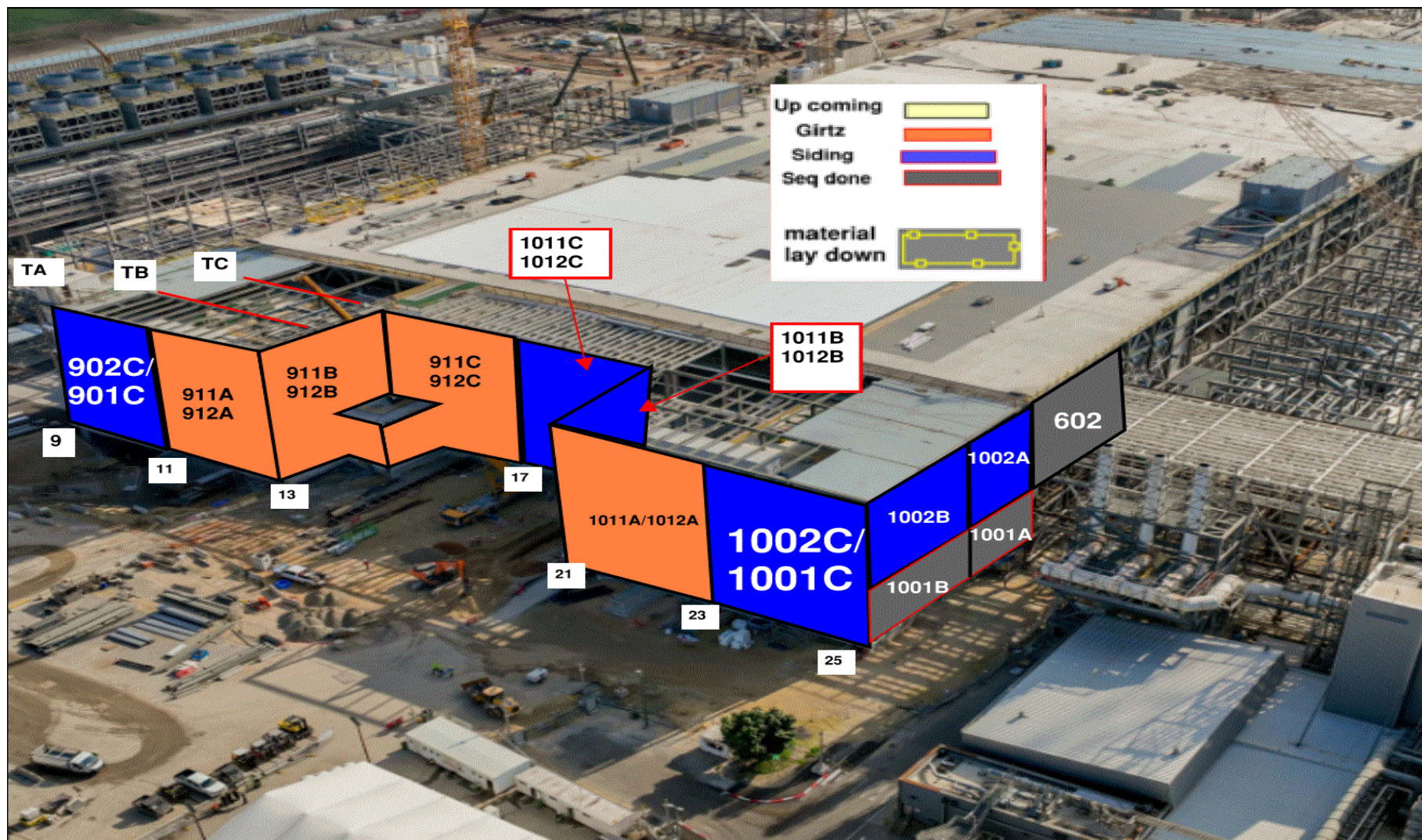
BLOWDOWN WALL
IS COMING NEXT WEEK.

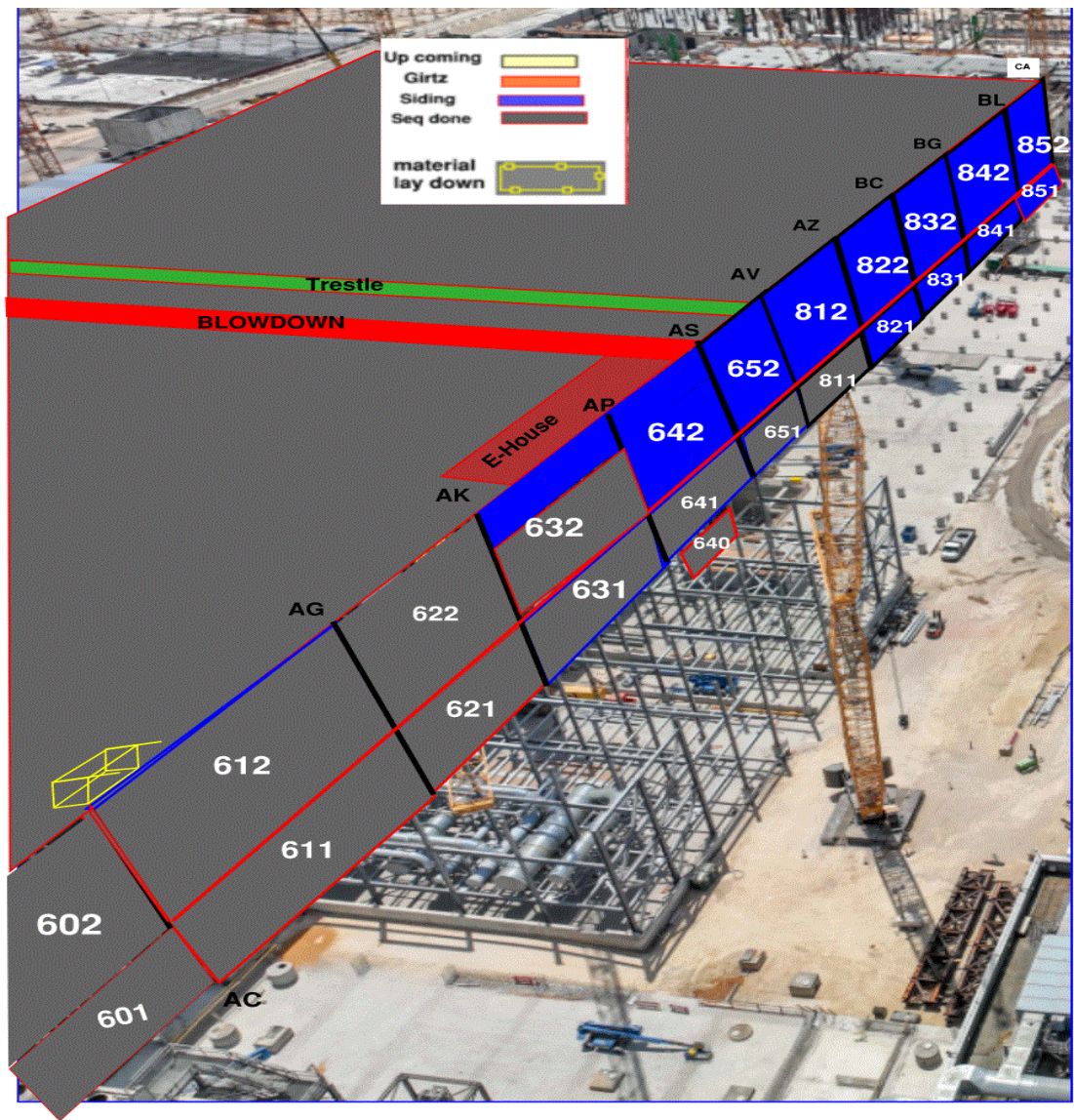












Siding - East FAB - PSSS

DEMO

Siding - West FAB - JYG

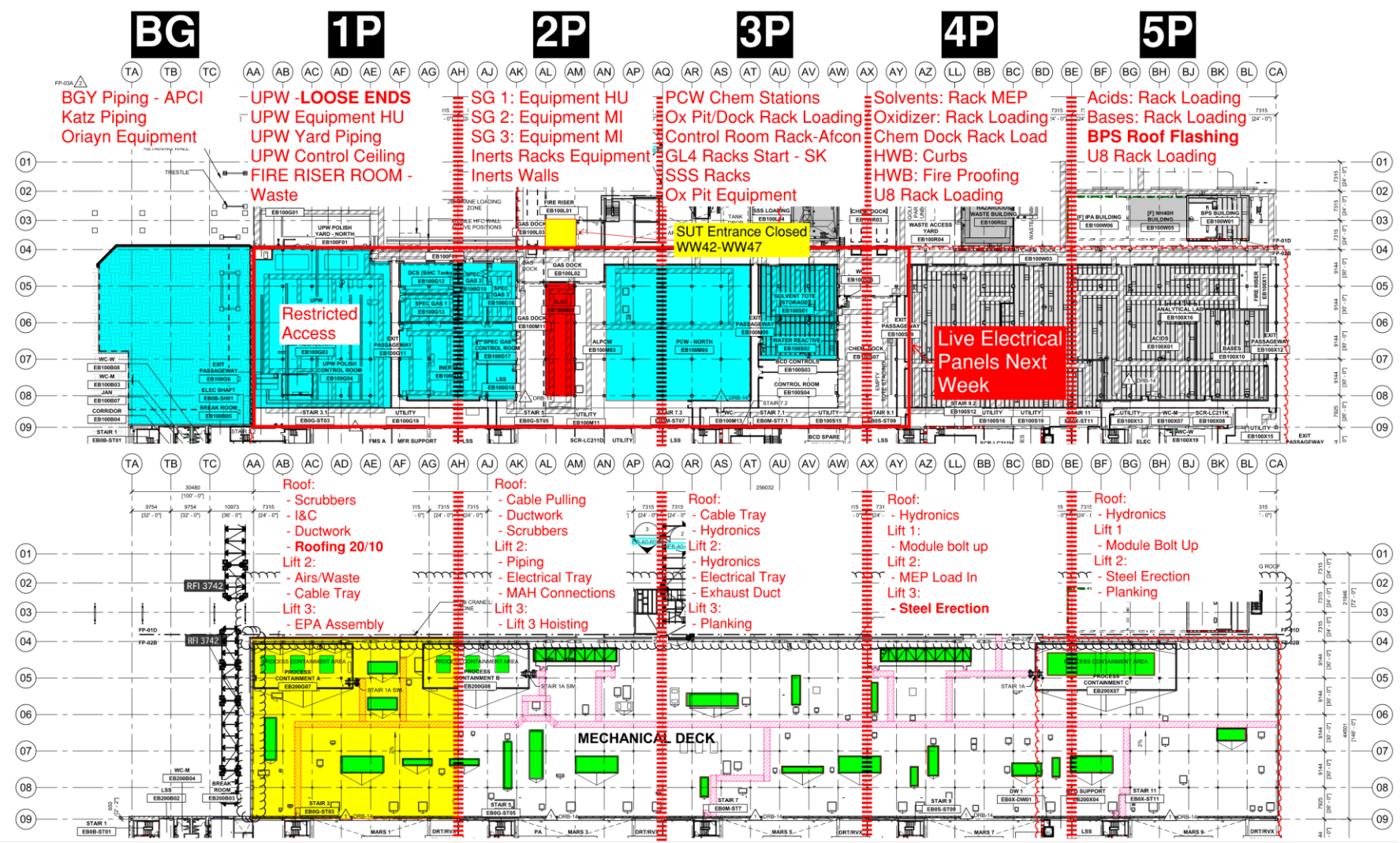
Link

1
2
3
4
5

PSSS.1

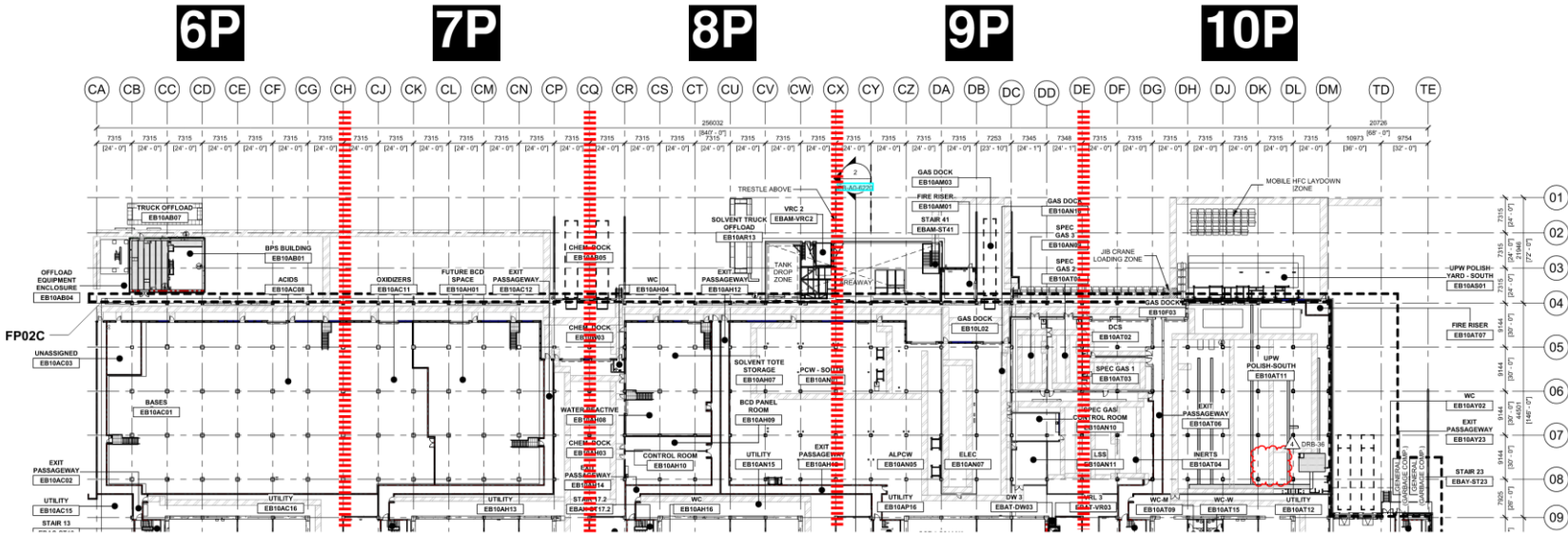
Utility Level
1YA

PSSS Roof
2SA

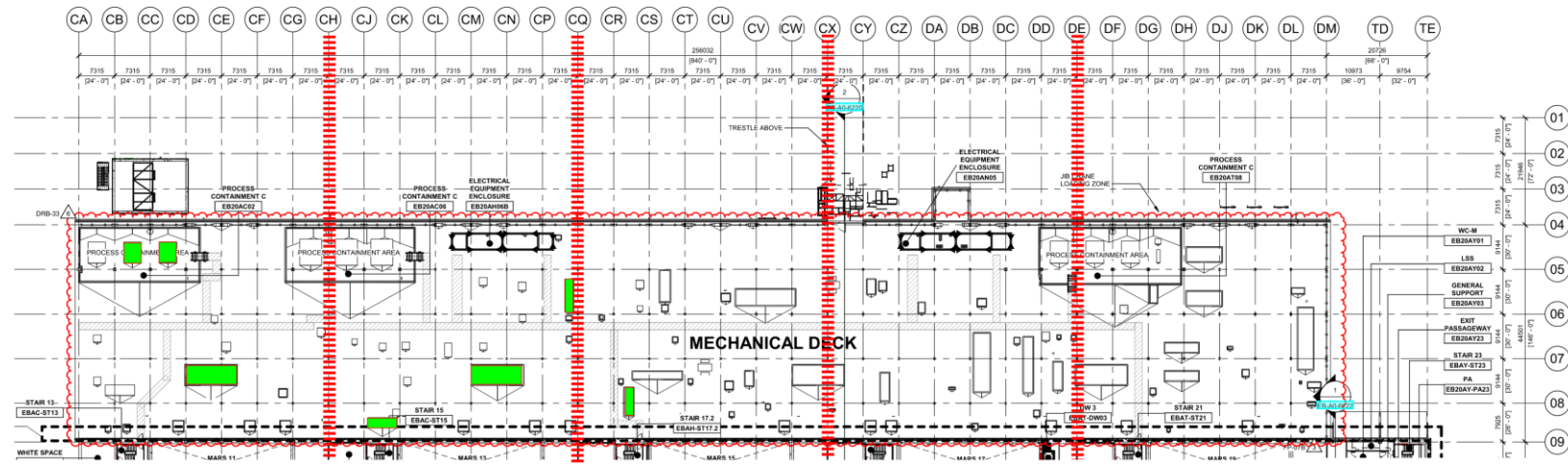


PSSS.2

Utility Level
1YA



PSSS Roof
2SA





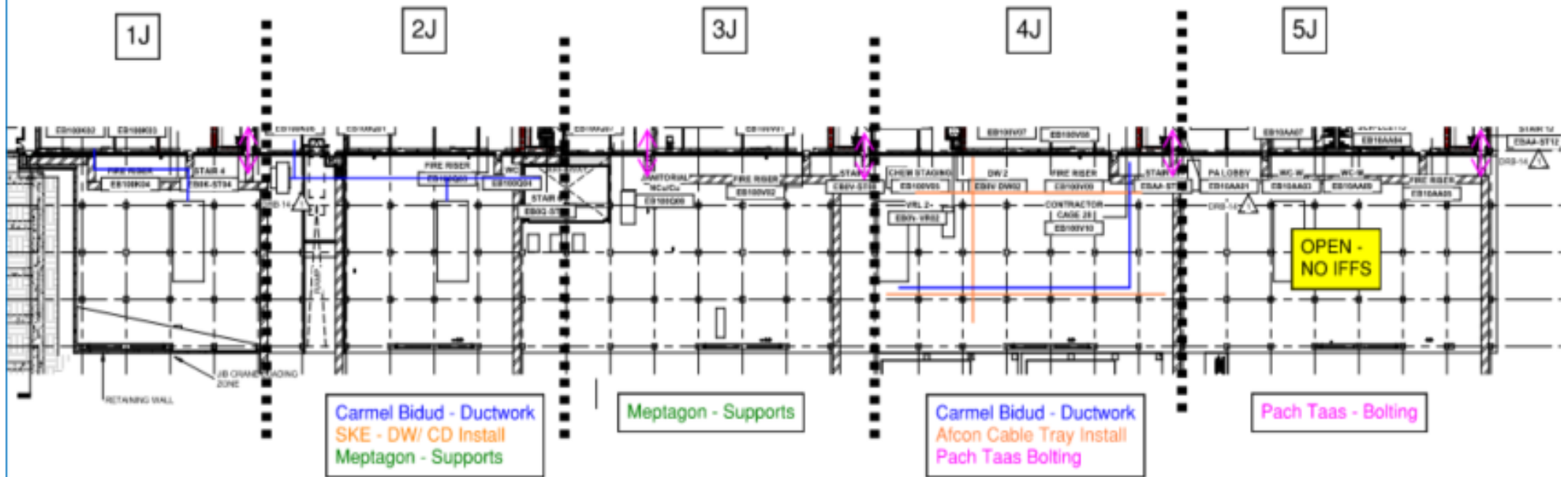
HOFFMAN CONSTRUCTION COMPANY

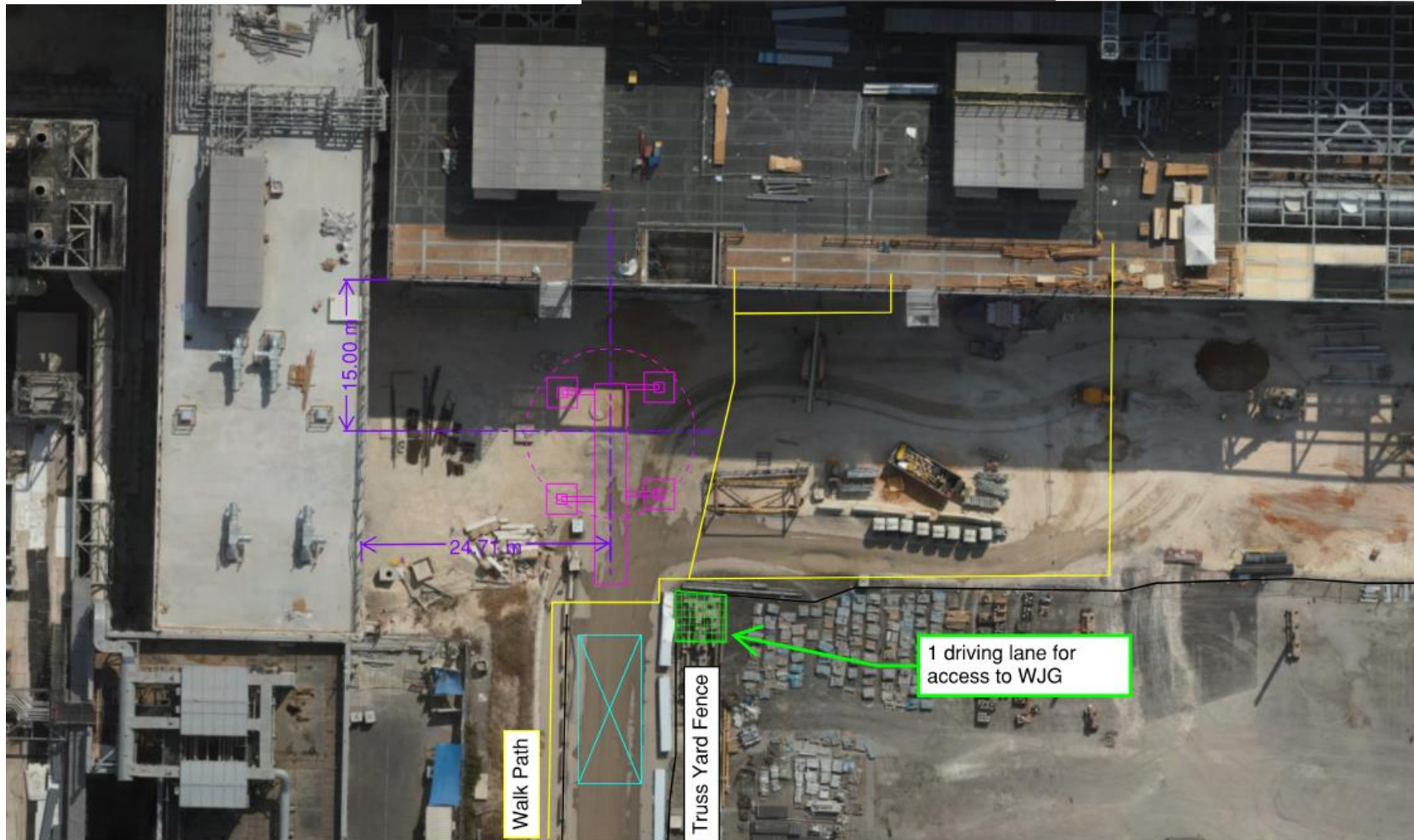




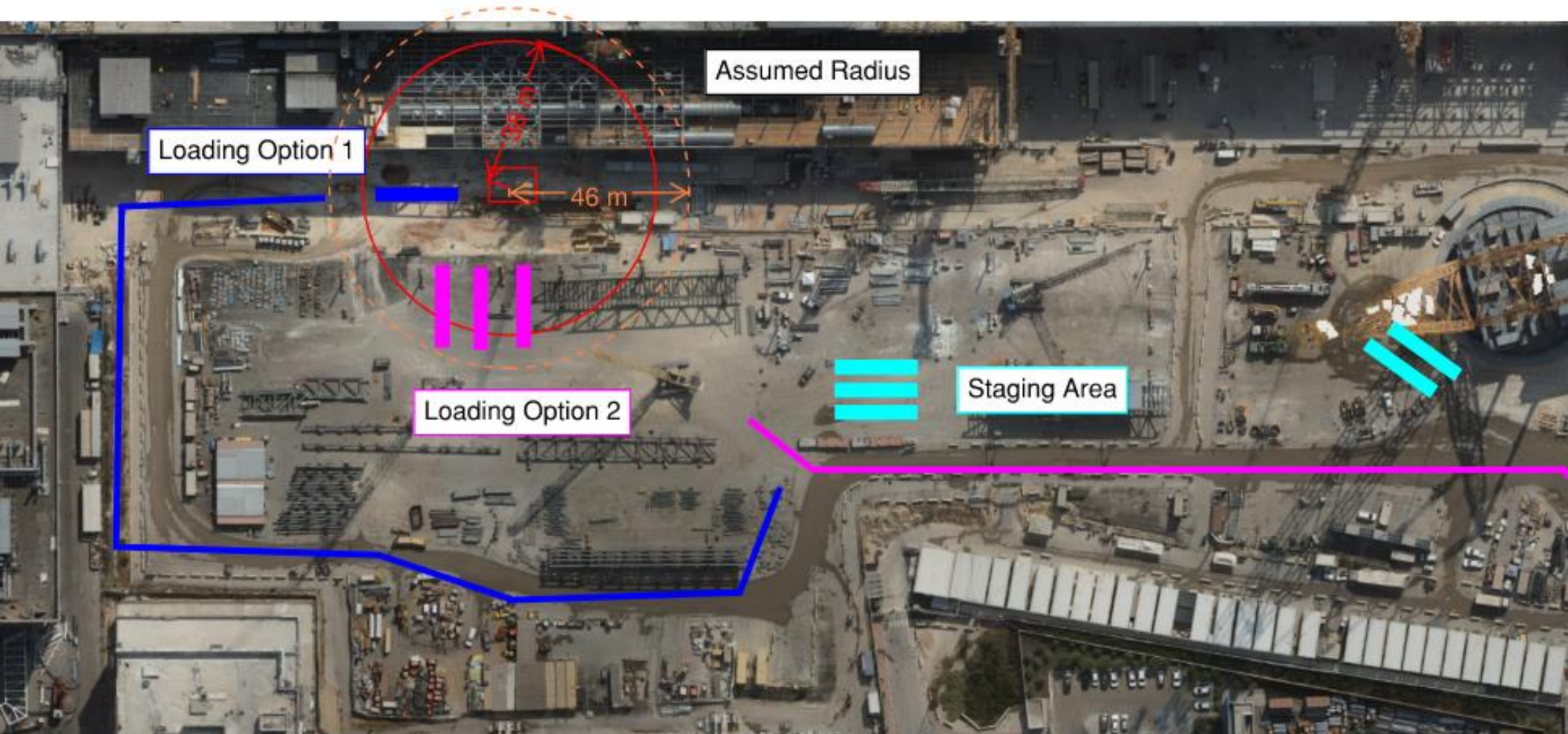


HOFFMAN CONSTRUCTION COMPANY





TC4 Dismantle Logistics



Truck Staging:

Dependent on Box Build and W&W Permission - Park Empty Trucks in Truss Yard. Other Options: In Sarens Area, or Outside Gate A (limit 2)

Truck Routing:

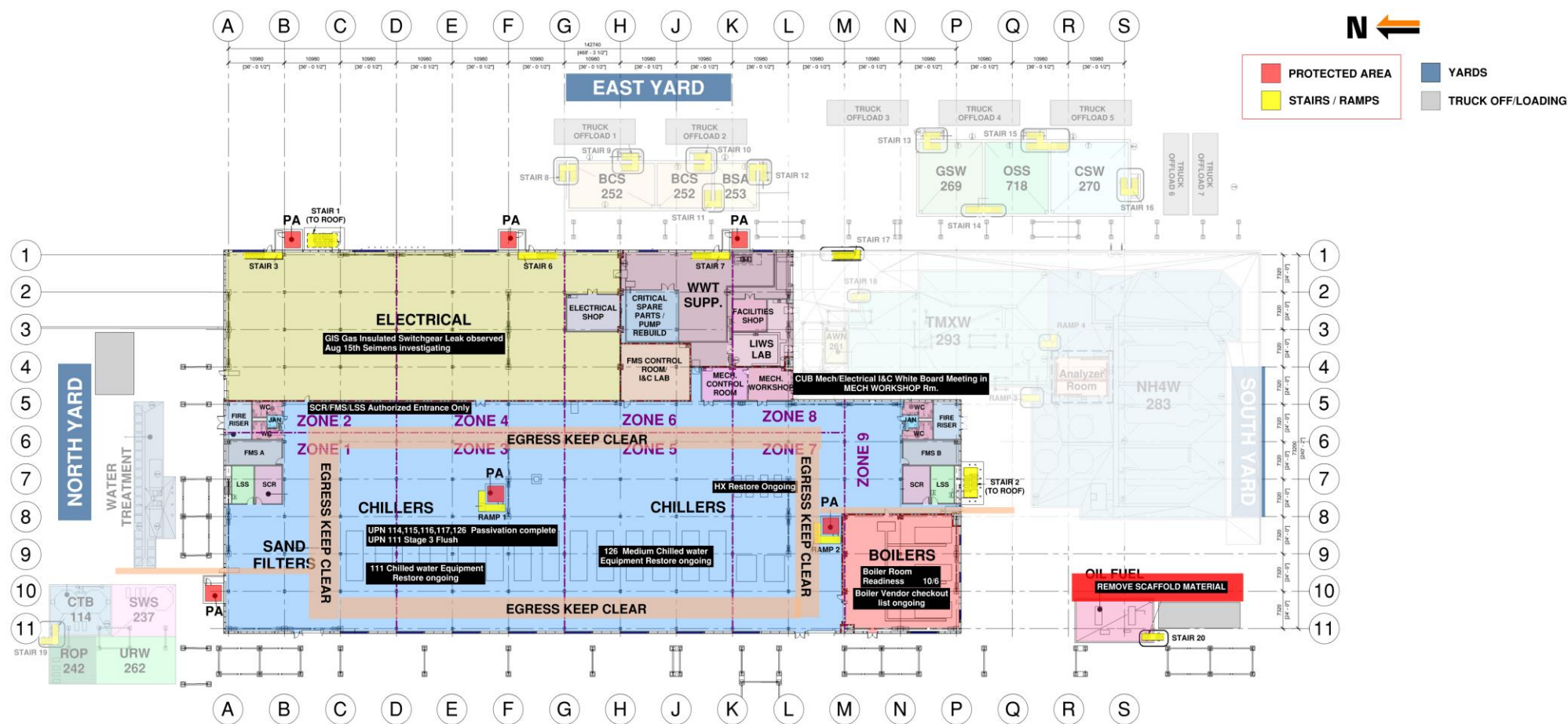
Option 1: Trailer north of crane, limit 1 truck only

Option 2: (Pending Box Build and W&W Permission) Stage 1-3 Trucks within 46m Radius

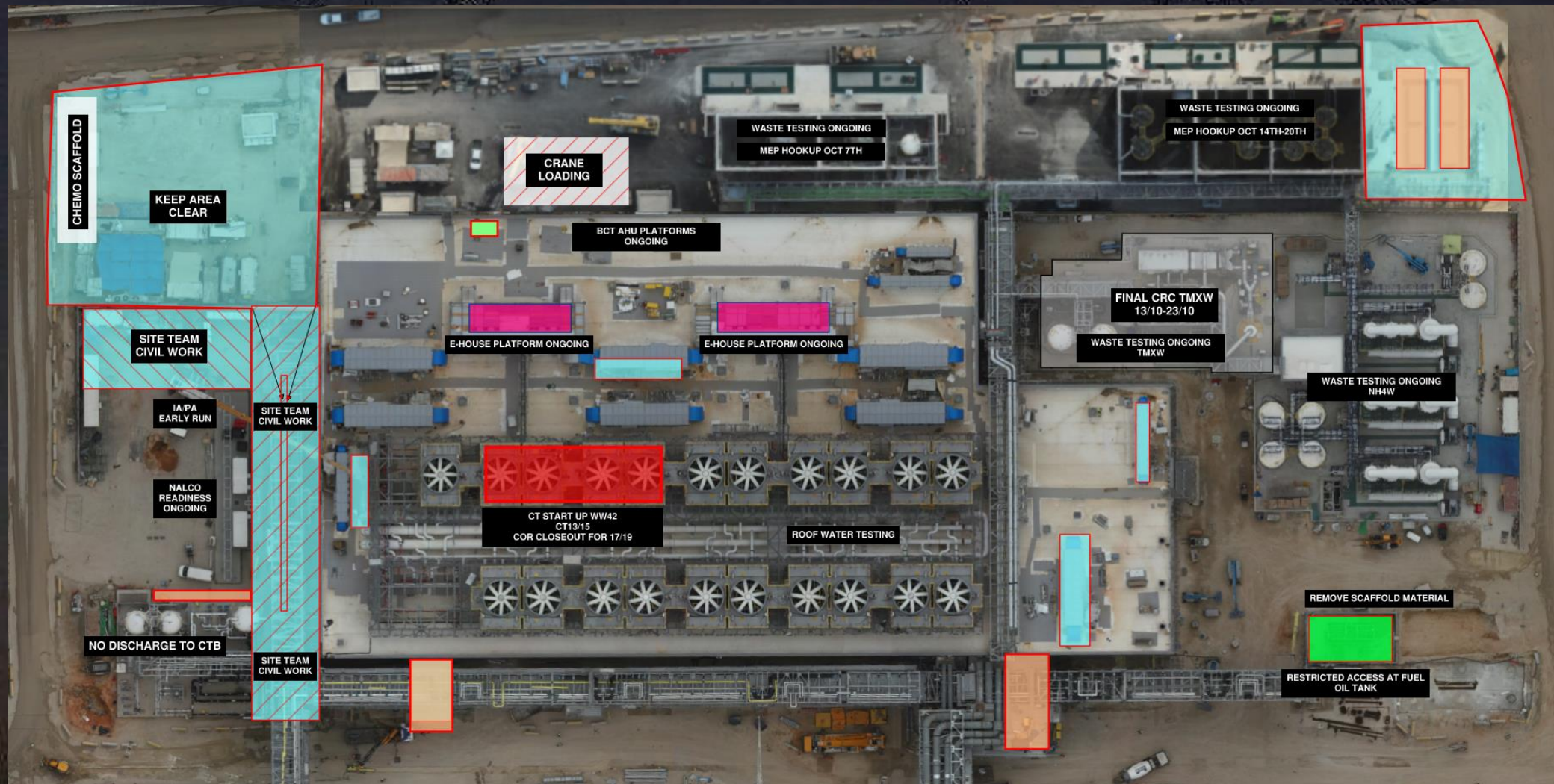
CUB 1

CUB 1 COORDINATION MAP

UPDATED __ / __ / __



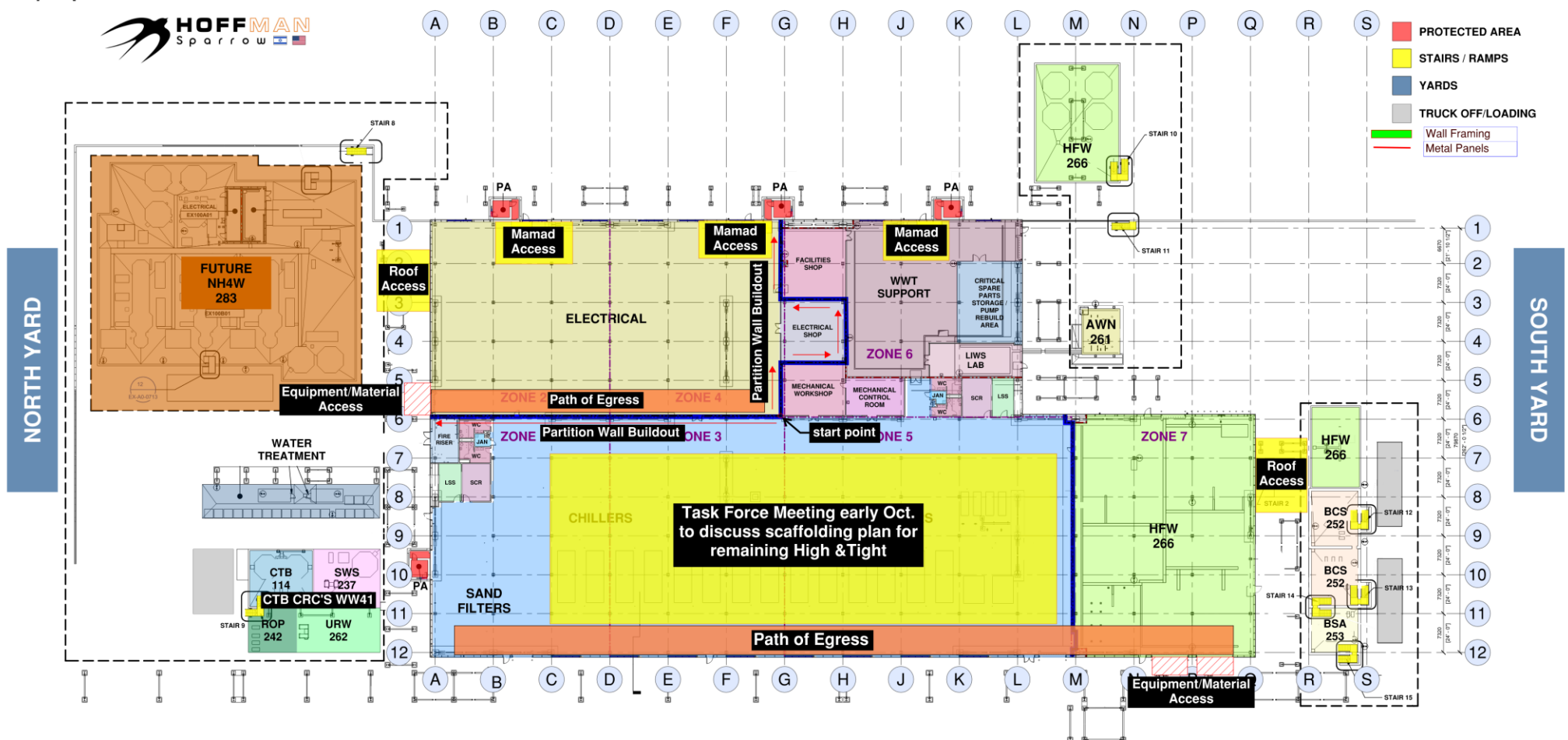
CUB 1 – EXTERIOR/ROOF



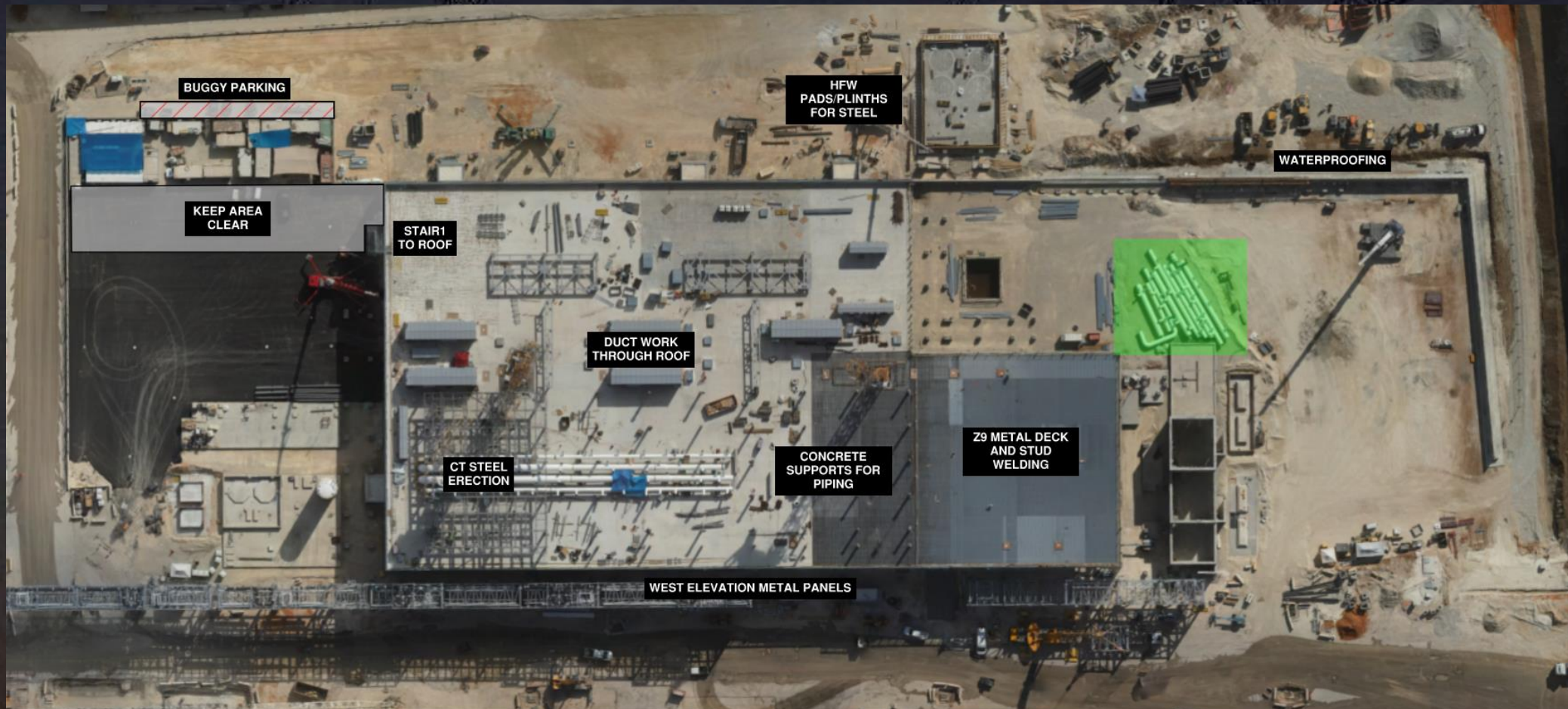


CUB 2

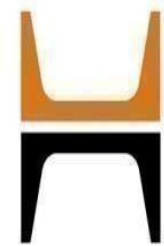
CUB 2 COORDINATION MAP



CUB 2 – EXTERIOR/ROOF







HOFFMAN CONSTRUCTION COMPANY



HOFFMAN
Sparrow  

T19 -ERECTION SEQUENCE

07/OCT

06/OCT

30/sep

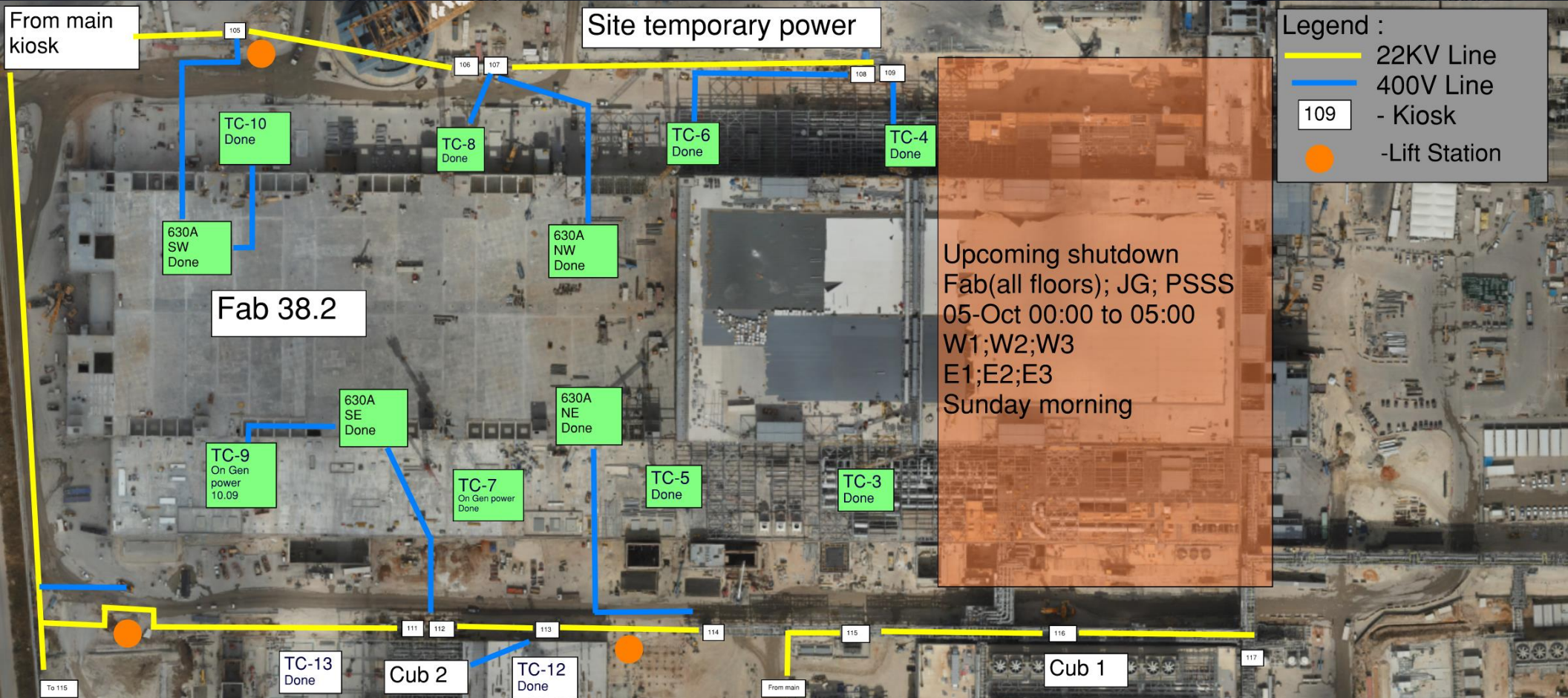
29/sept

25-26/sept

23-24/sept

22/sep



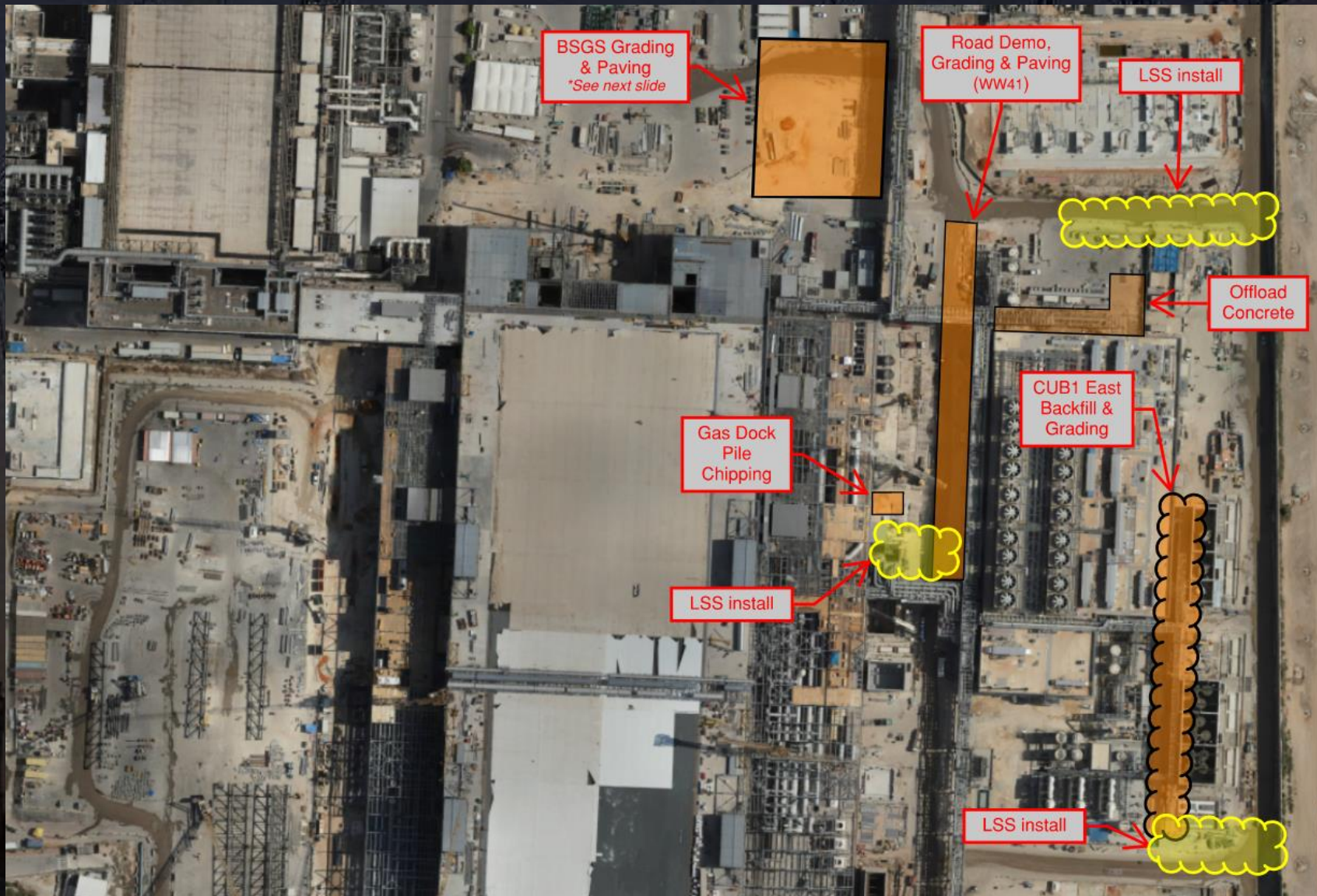




Daily Coordination Meeting

Site Logistics

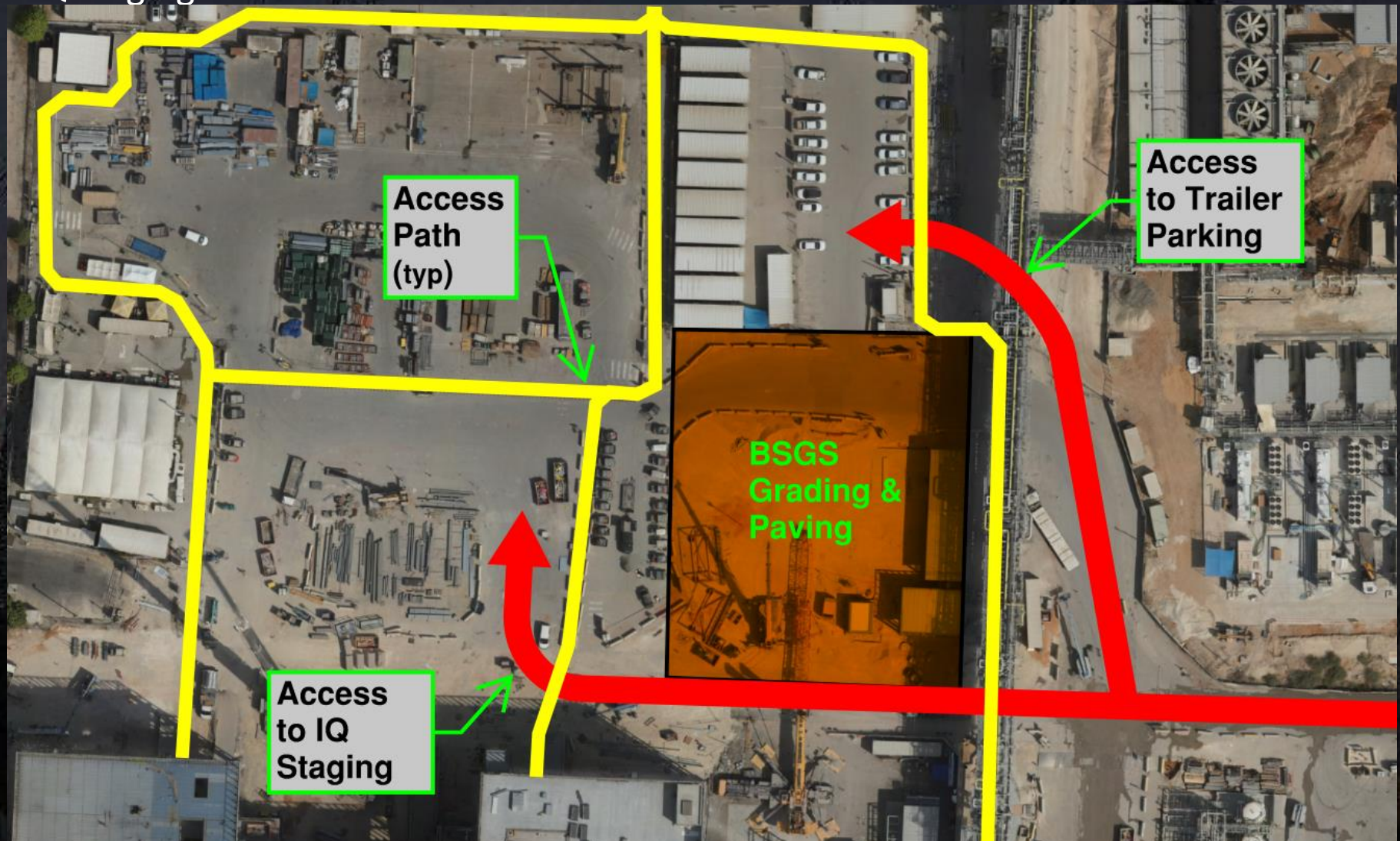
North



Daily Coordination Meeting

Site Logistics

North IQ Staging Access





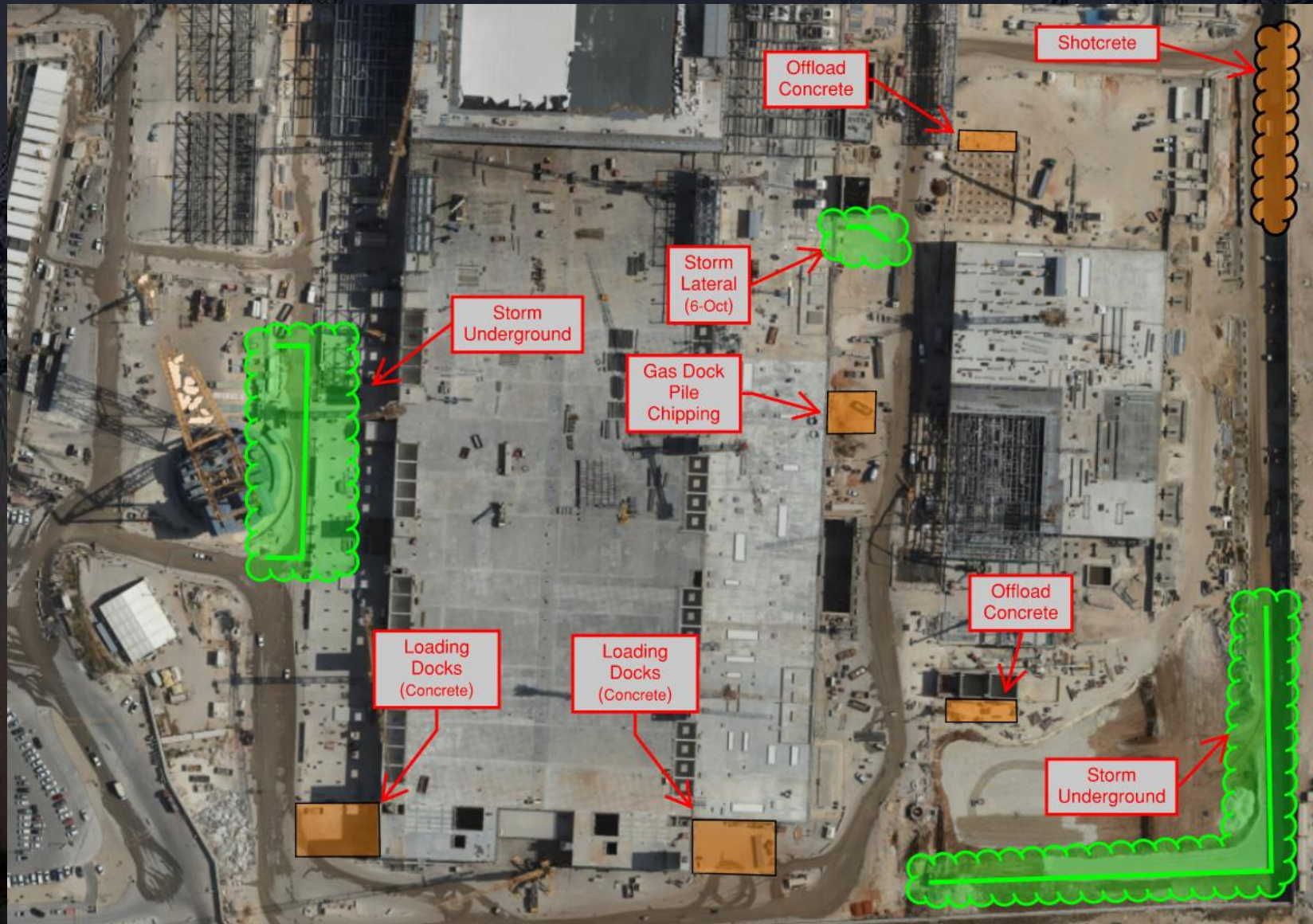
HOFFMAN CONSTRUCTION COMPANY



Daily Coordination Meeting

Site Logistics

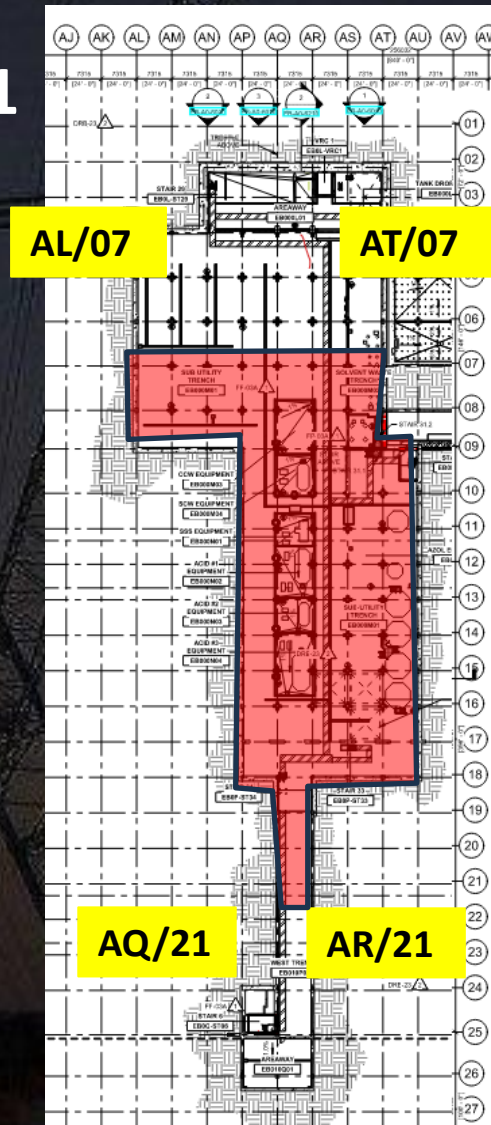
South



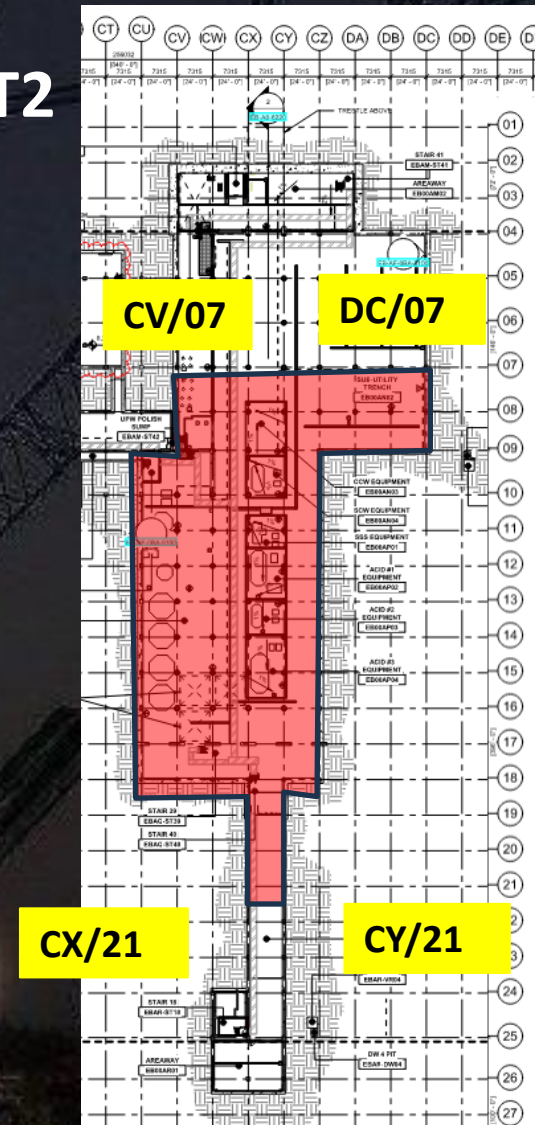
Daily Coordination Meeting

Site Logistics - Protected Areas (SUT Level)

SUT1

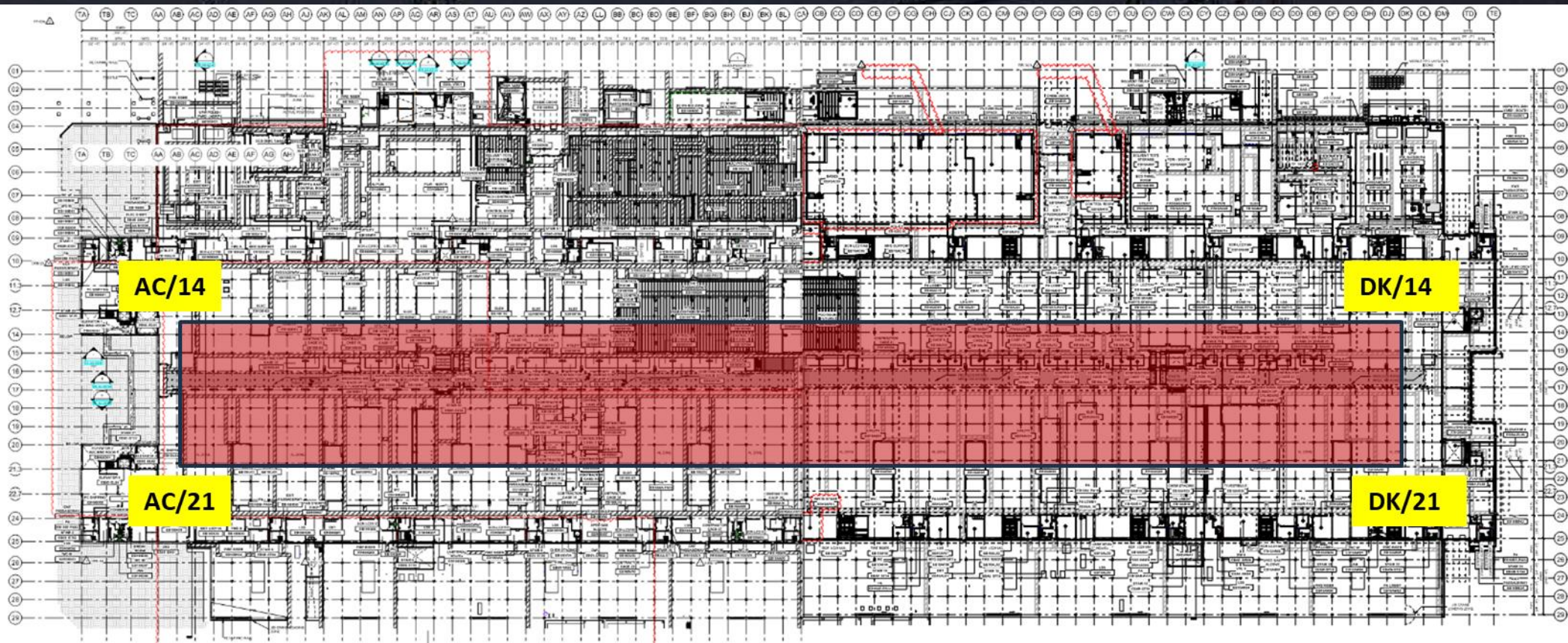


SUT2



Daily Coordination Meeting

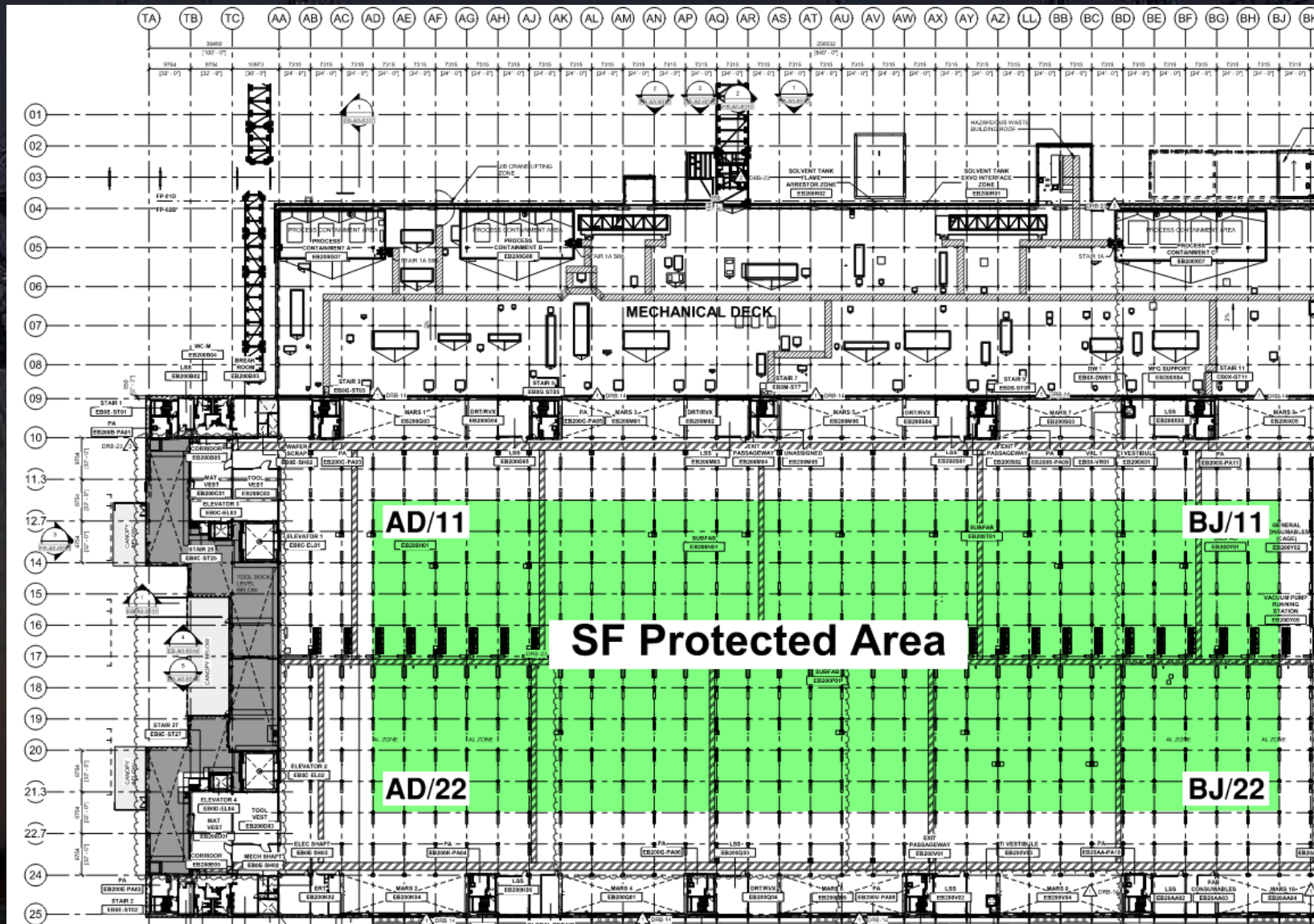
Site Logistics - Protected Areas (Utility Level)





Daily Coordination Meeting

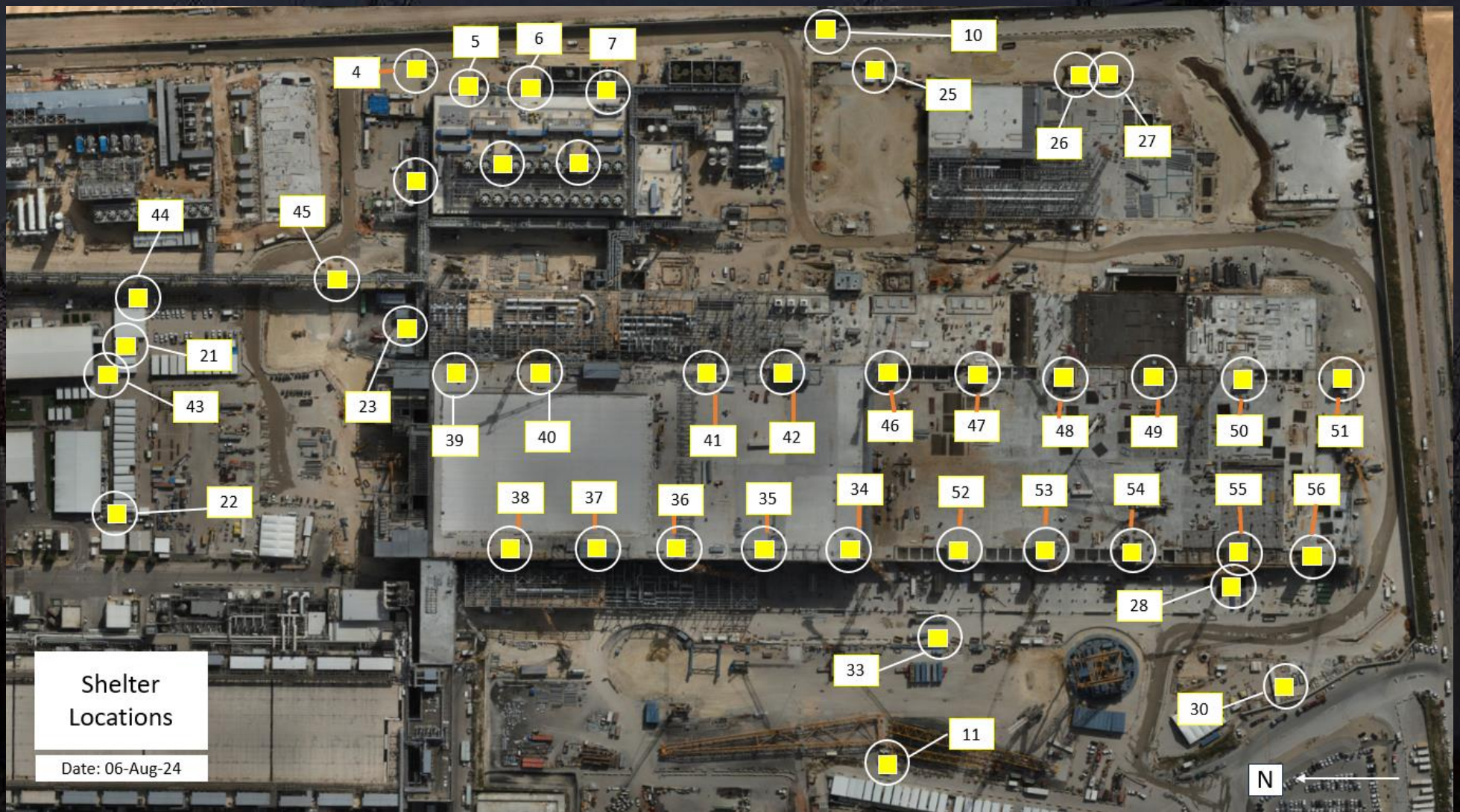
Site Logistics - Protected Areas (Subfab Level)



Daily Coordination Meeting

Site Logistics

Protected Areas



Open CORs by Subcontractor

WW 40 – 539 CORs

WW 41 – 540 CORs

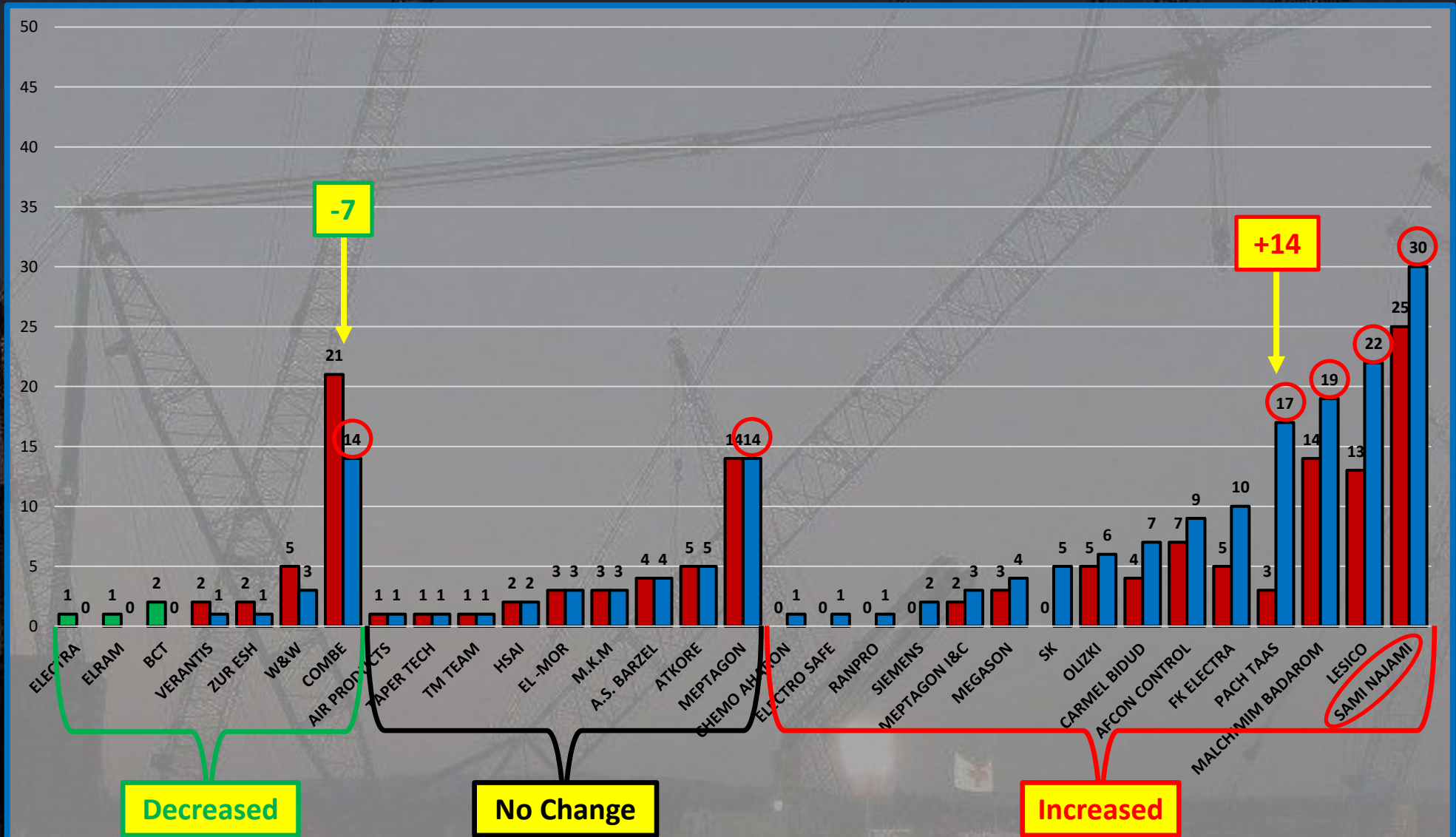




Overdue CORs by Subcontractor

WW 40 – 149 CORs

WW 41 – 190 CORs



SHARING LESSONS LEARNED FROM EAGLE



LEARN FROM EVERYTHING

ALL INJURIES ARE PREVENTABLE | PEOPLE ARE THE SOLUTION | SUCCESS IS THE PRESENCE OF SAFETY

PROJECT
EAGLE
2024



WHAT HAPPENED?

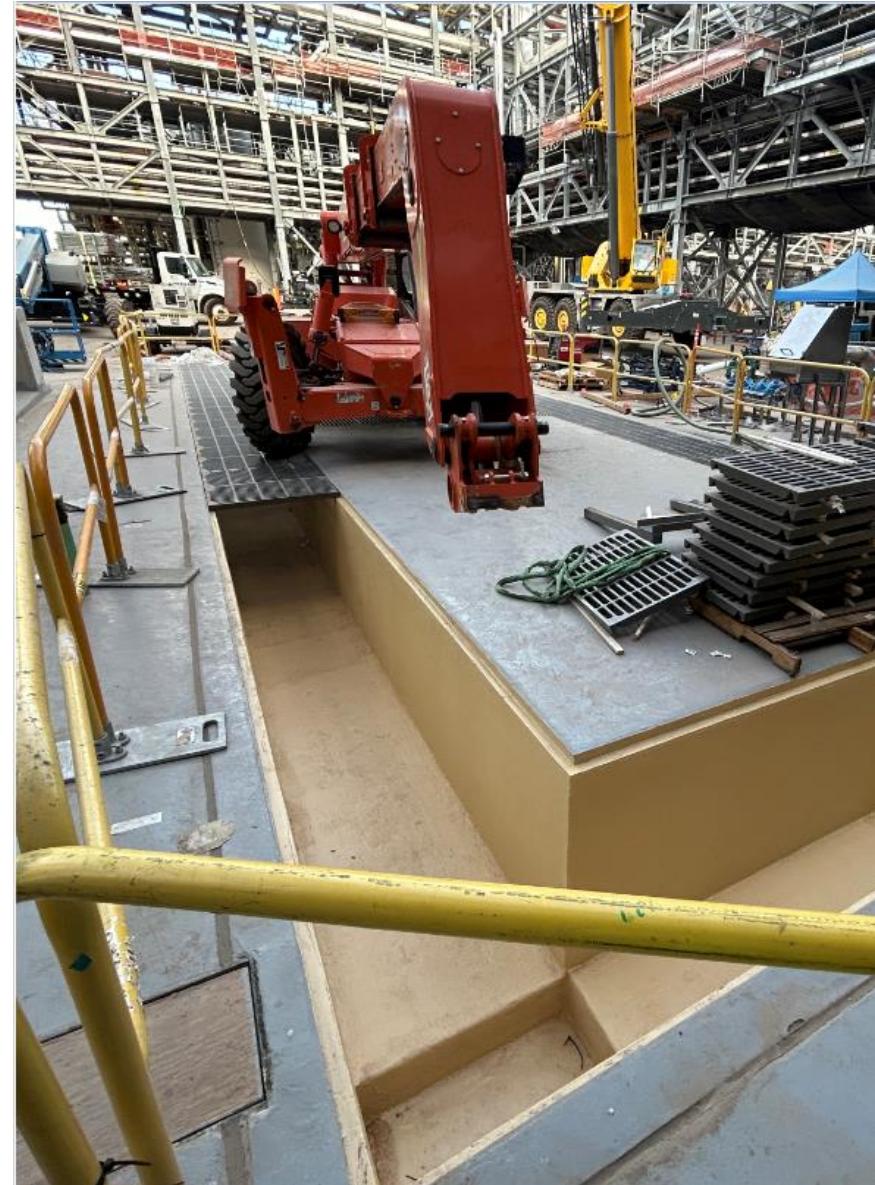
Crew was setting grating onto a trench embed by rigging the grating from a forklift. A crew member would then manually receive and position grating into place. When the operator of the forklift turned the wheels instead of the boom to reposition grating, the grating shifted. Crew member receiving grating tried to secure grating however, their left-hand fingers were pinched between grating and concrete wall.

WHAT CORRECTIVE ACTIONS ARE BEING TAKEN?

- Toolbox Talk on reinforcing hold points when changing conditions occur and pinch points.
- Foreman's training on how to alleviate schedule pressure to crews out in the field.
- Generate a JHA for setting grating onto trench embeds.

WHAT CAN THE PROJECT LEARN FROM THIS INCIDENT?

Never sacrifice safety to complete a task. There are always alternative methods that can and should be used if the plan can potentially cause an incident or accident.



SHARING LESSONS LEARNED FROM EAGLE



LEARN FROM EVERYTHING

ALL INJURIES ARE PREVENTABLE | PEOPLE ARE THE SOLUTION | SUCCESS IS THE PRESENCE OF SAFETY

PROJECT
EAGLE
2024



WHAT HAPPENED?

Employee was attempting to both bell a crane and catch a load filled with scaffolding components. As the hoisted material neared the landing zone located in the NW corner of the NTT rooftop, the material load struck an active IA copper line.

WHAT CORRECTIVE ACTIONS ARE BEING TAKEN?

- Landing Zone in NW of the NTT will be adjusted for more landing space & bulletproof active systems nearby.
- Stand down
- Crew re-trained on proper bellman & rigging protocols
- Implemented dual tag line policy

WHAT CAN THE PROJECT LEARN FROM THIS INCIDENT?

Every employee has stop work authority, especially when not properly manned for crane activities. Bellmen should have a receiver present so they can focus on giving clear direction to the crane operator.



Daily Coordination Meeting



14:00 Sign In