

Daily Coordination Meeting



14:00 Sign In

Daily Coordination Meeting

General Topics:

- Incident reporting

Link Ramp wall/slab
1:00 am

BPS.1 Plinths
2:00 am

Gas Dock MOD1 CLSM
3:00 am

CUB2 Apron CLSM
4:00 am

Door Landing TA/25
4:00 am

CUB2 Apron - CLSM
4:00 am

Gas Dock MOD 1 CLSM
3:00 am

BPS.1 Plinths
2:00 am

Door landing TA/25
4:00 am

Link ramp wall
1:00 am

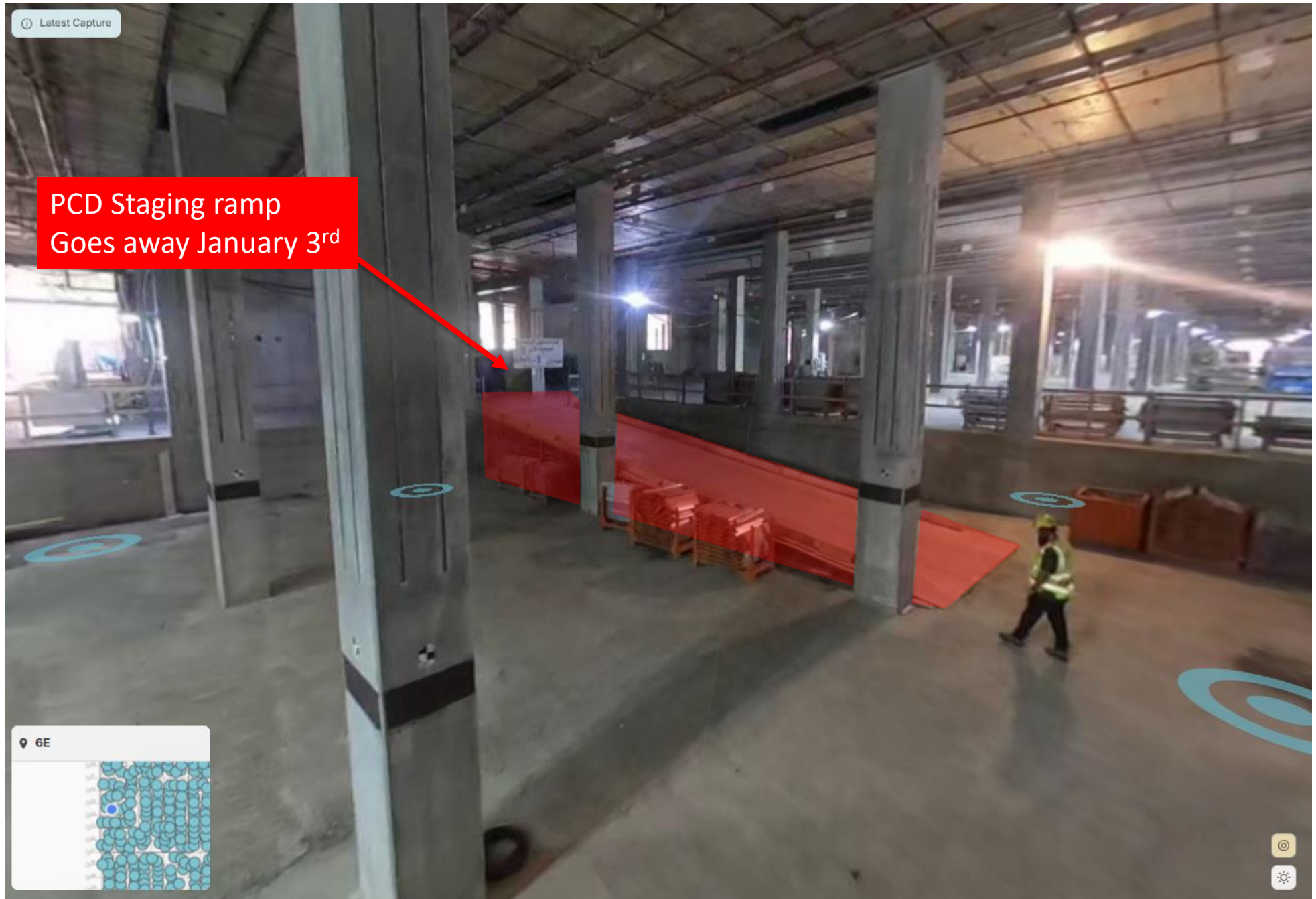




HOFFMAN CONSTRUCTION COMPANY



UTILITY LEVEL LOGISTICS



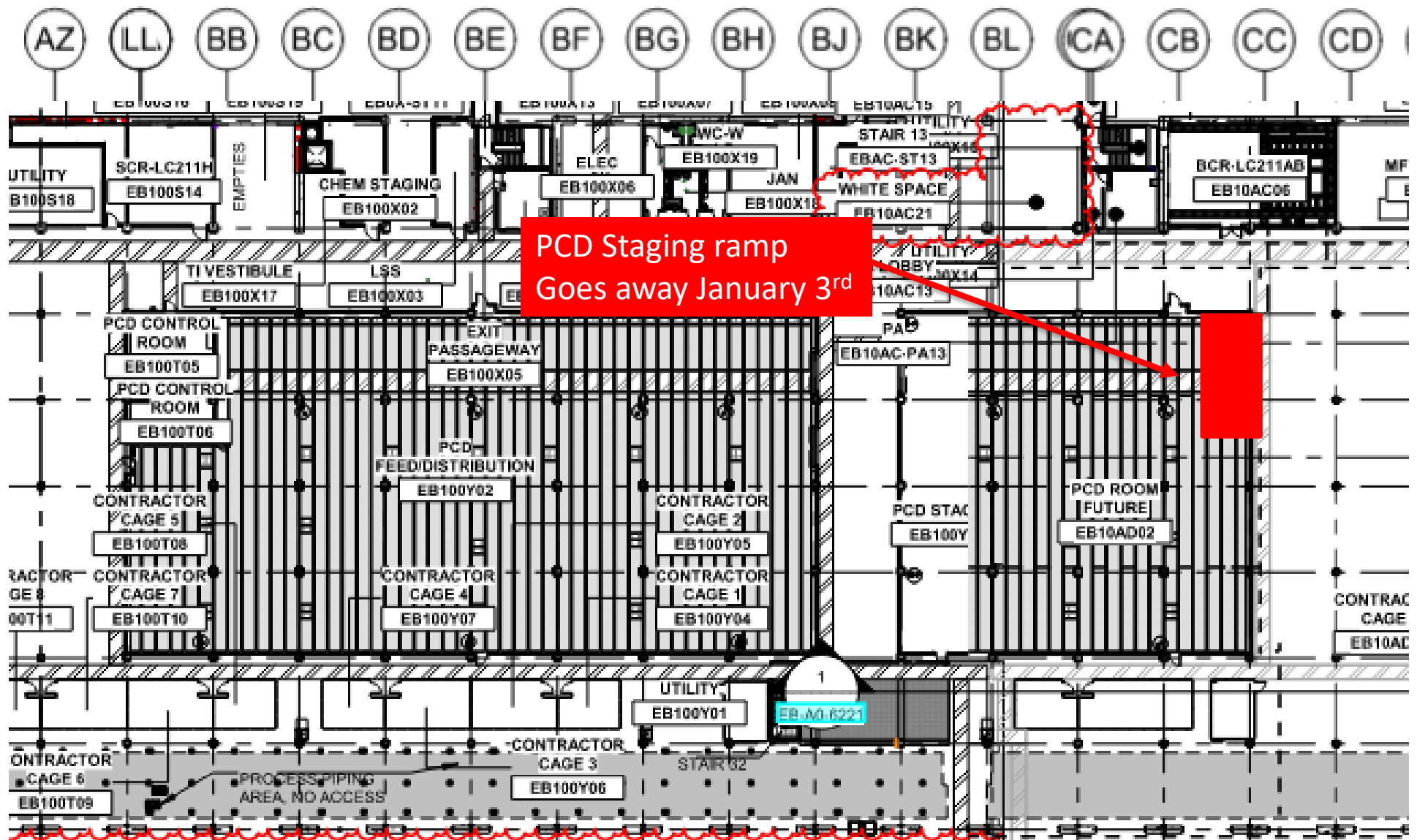
PCD Staging ramp
Goes away January 3rd

Latest Capture

6E

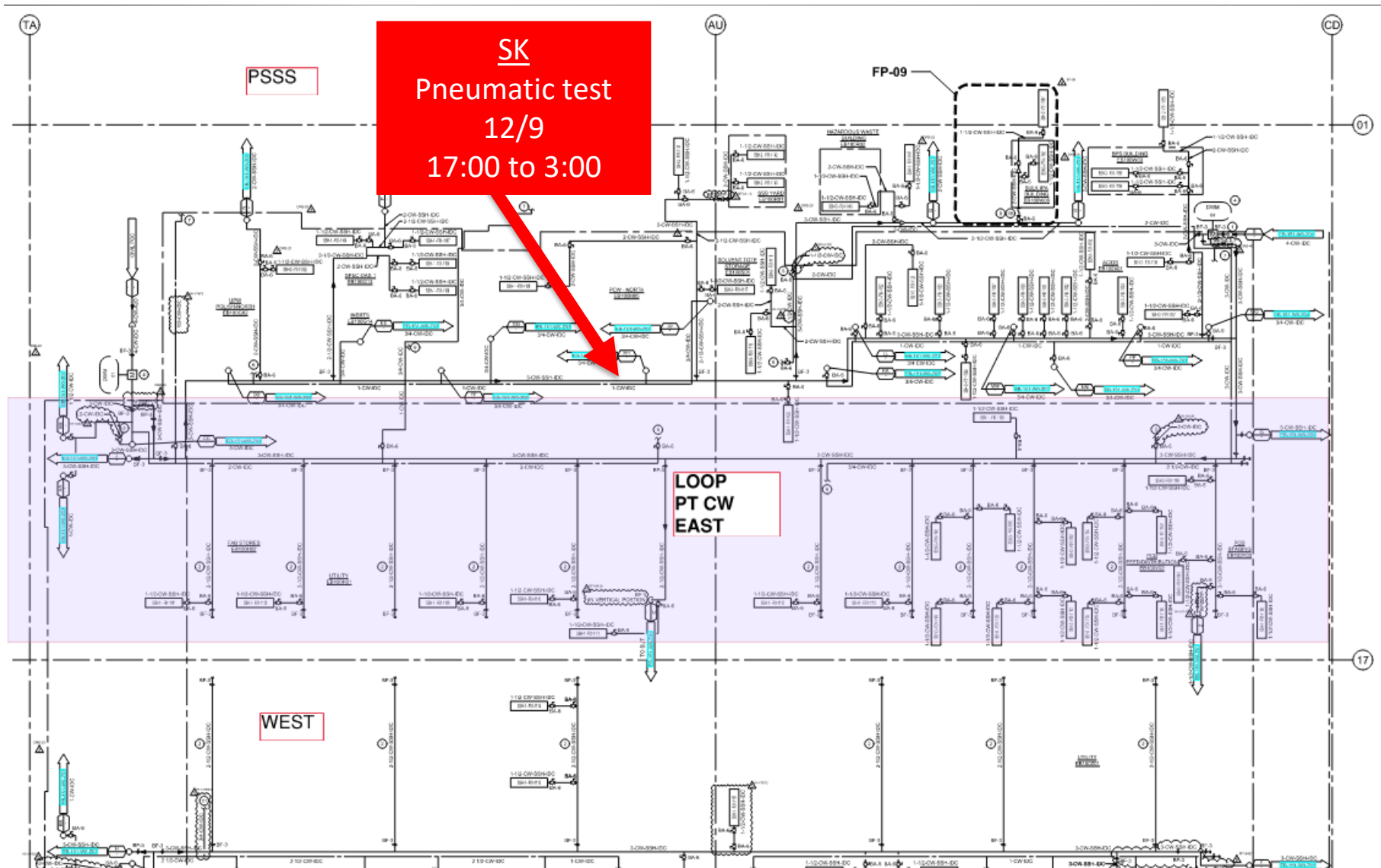


UTILITY LEVEL LOGISTICS

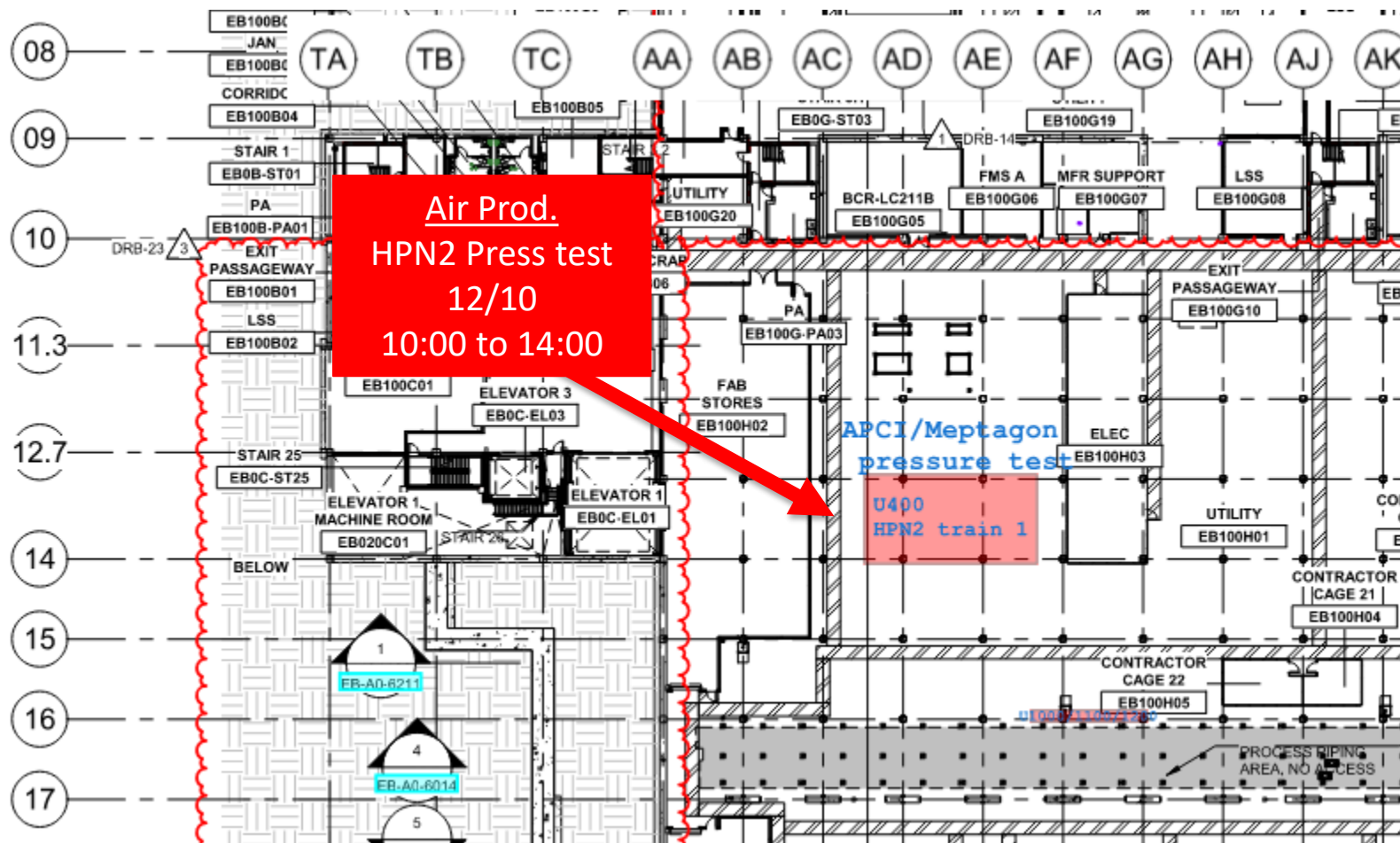




UTILITY LEVEL PRESS T.

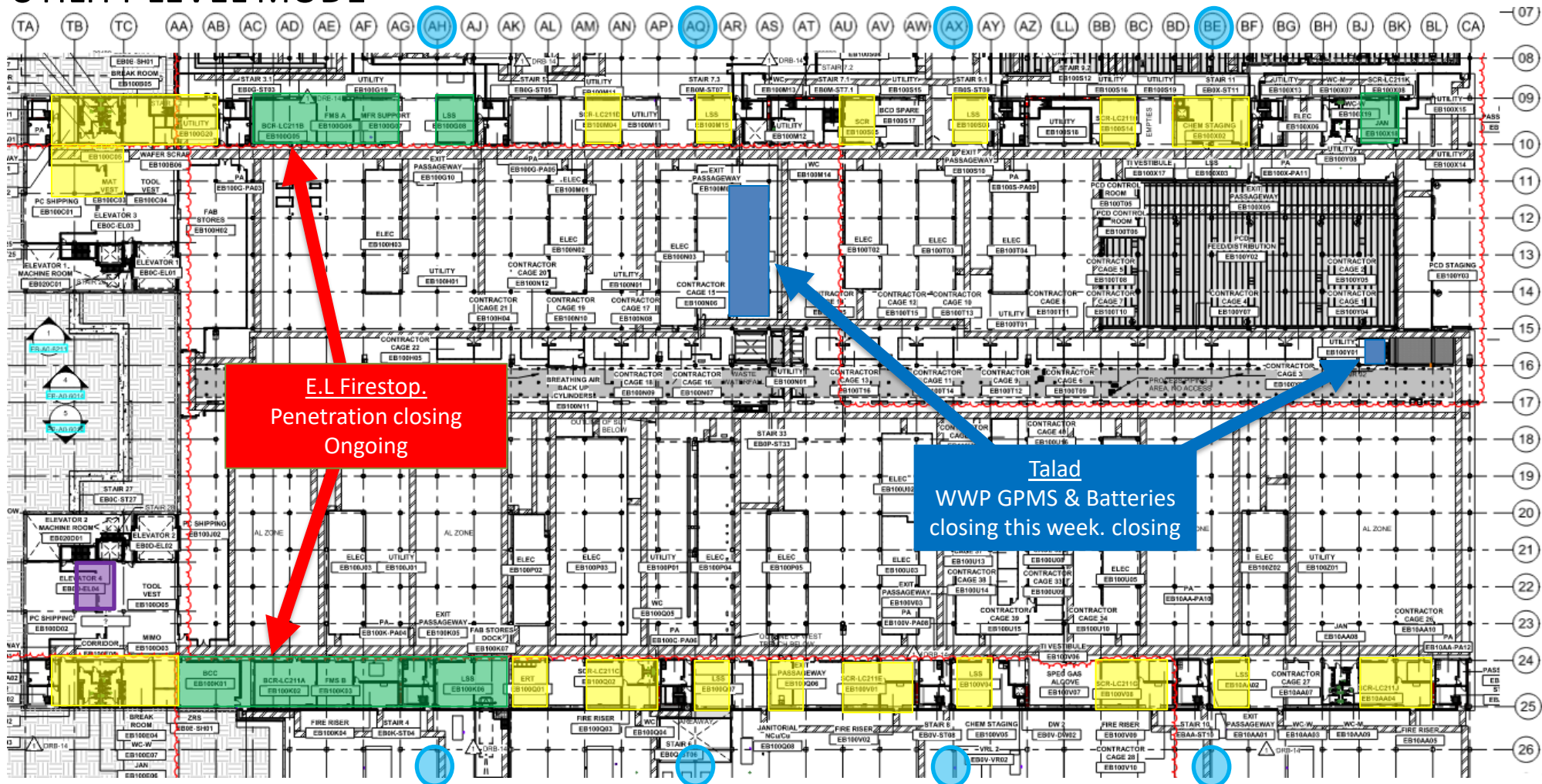


UTILITY LEVEL PRESS T.





UTILITY LEVEL MOD1



**E.L Firestop.
Penetration closing
Ongoing**

**Talak
WWP GPMS & Batteries
closing this week. closing**

BELFOR
Mold remediation

ELRAM
Drywall install

MEP+Electrical
Ready for re-install

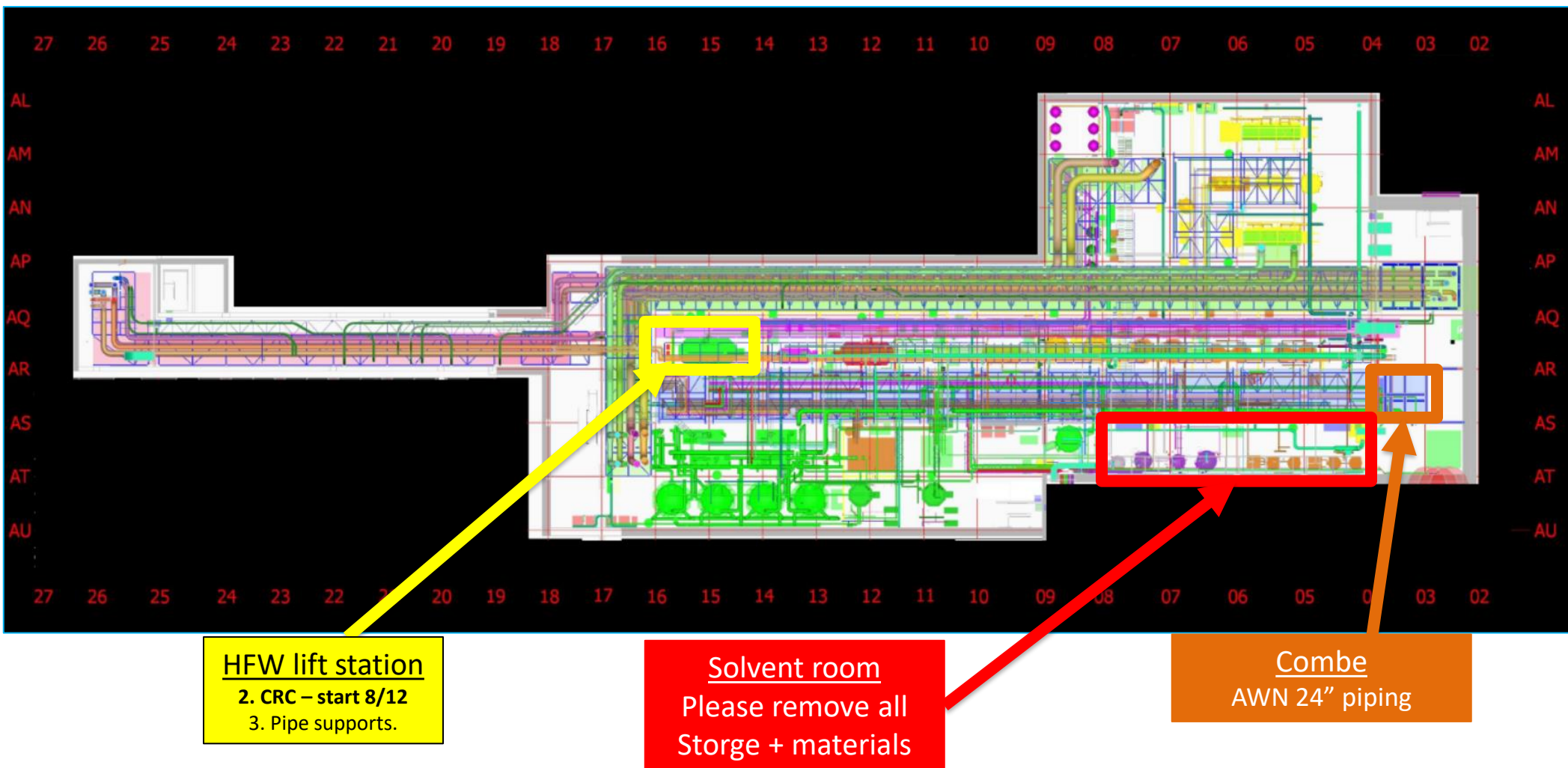


MALHIMIM
9E 9W & 8W
Ongoing

MALHIMIM
9E 9W & 8W
Ongoing
Need completion date



SUT 38.1 LEVEL





HOFFMAN CONSTRUCTION COMPANY



SUT 38.2 LEVEL

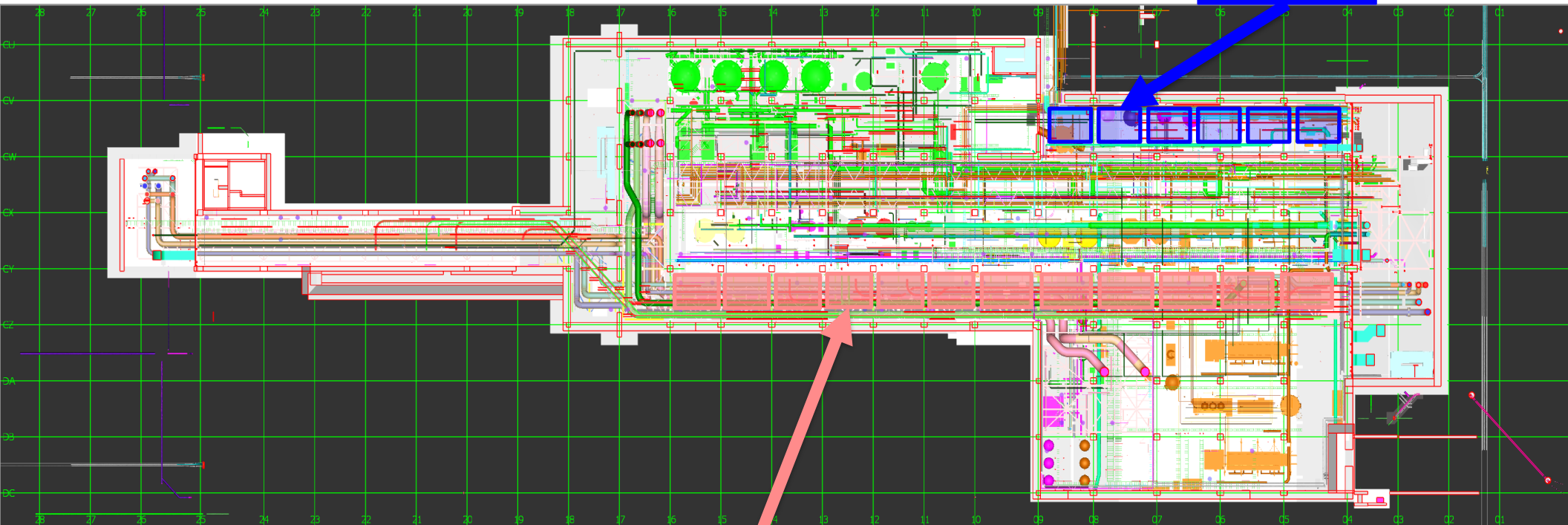
Rack 4b

Lifting

#1-08/12

#2-11/12

#3-16/12



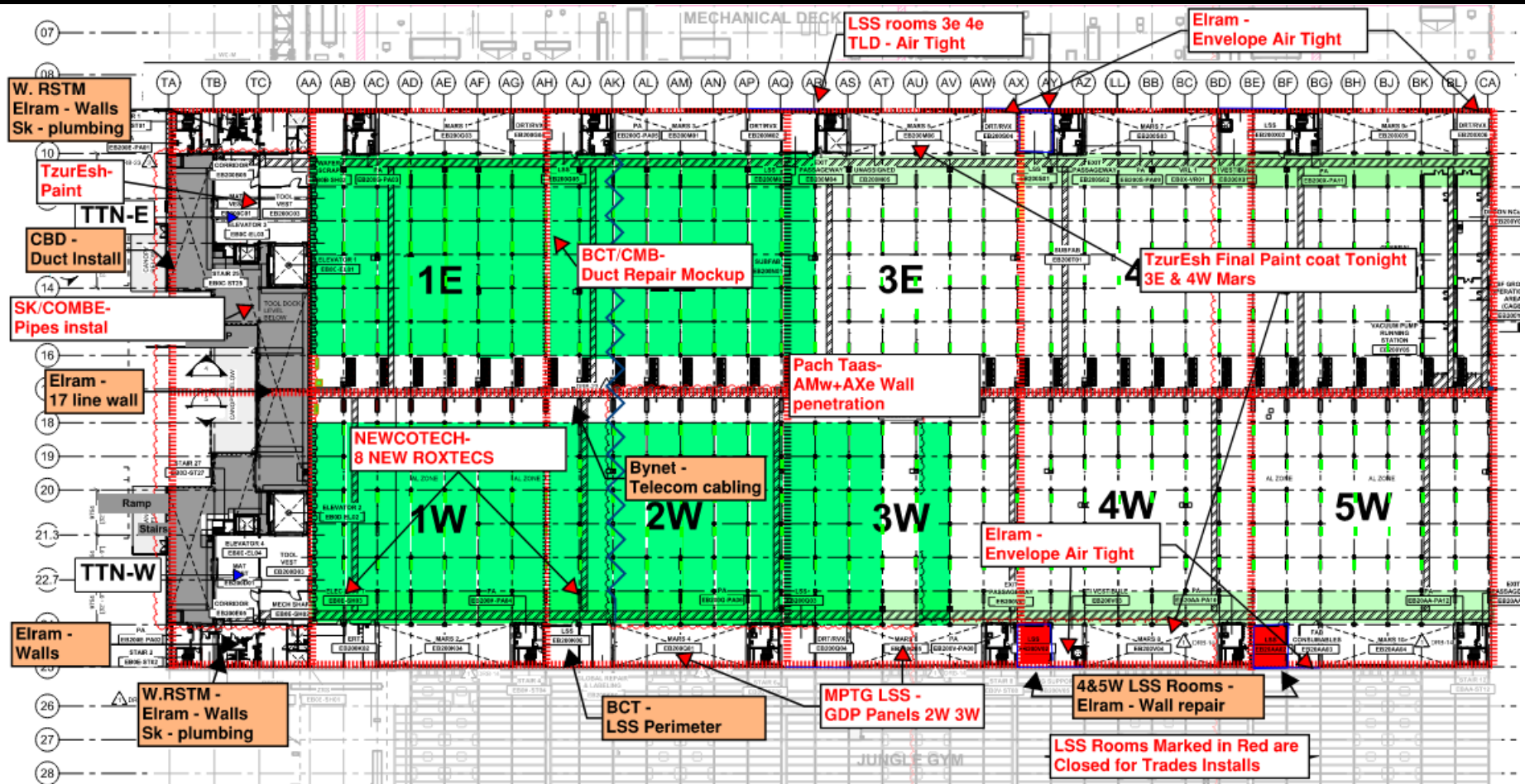
Rack 2

MIMO -

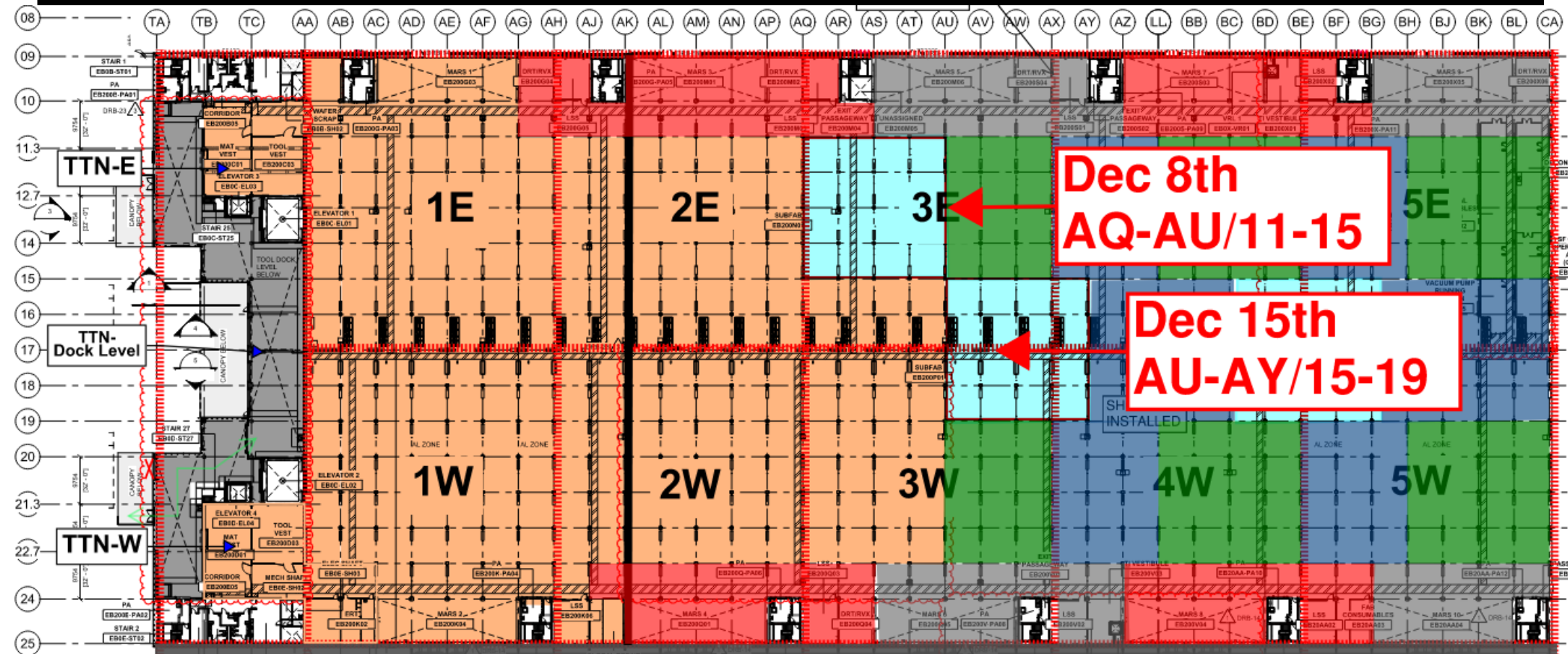
Module #4

12th of Dec

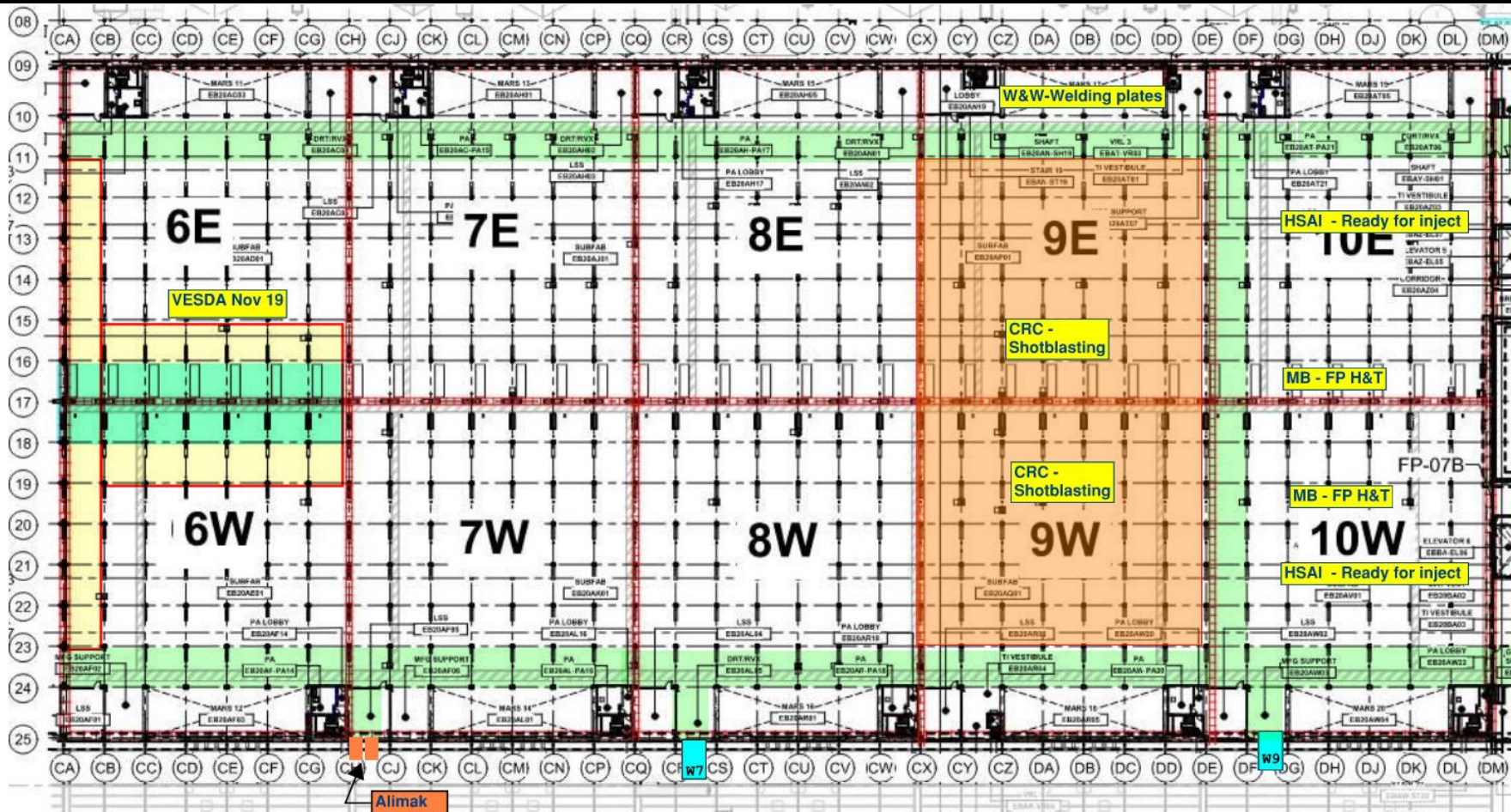
SUBFAB BUILDOUT MOD 1

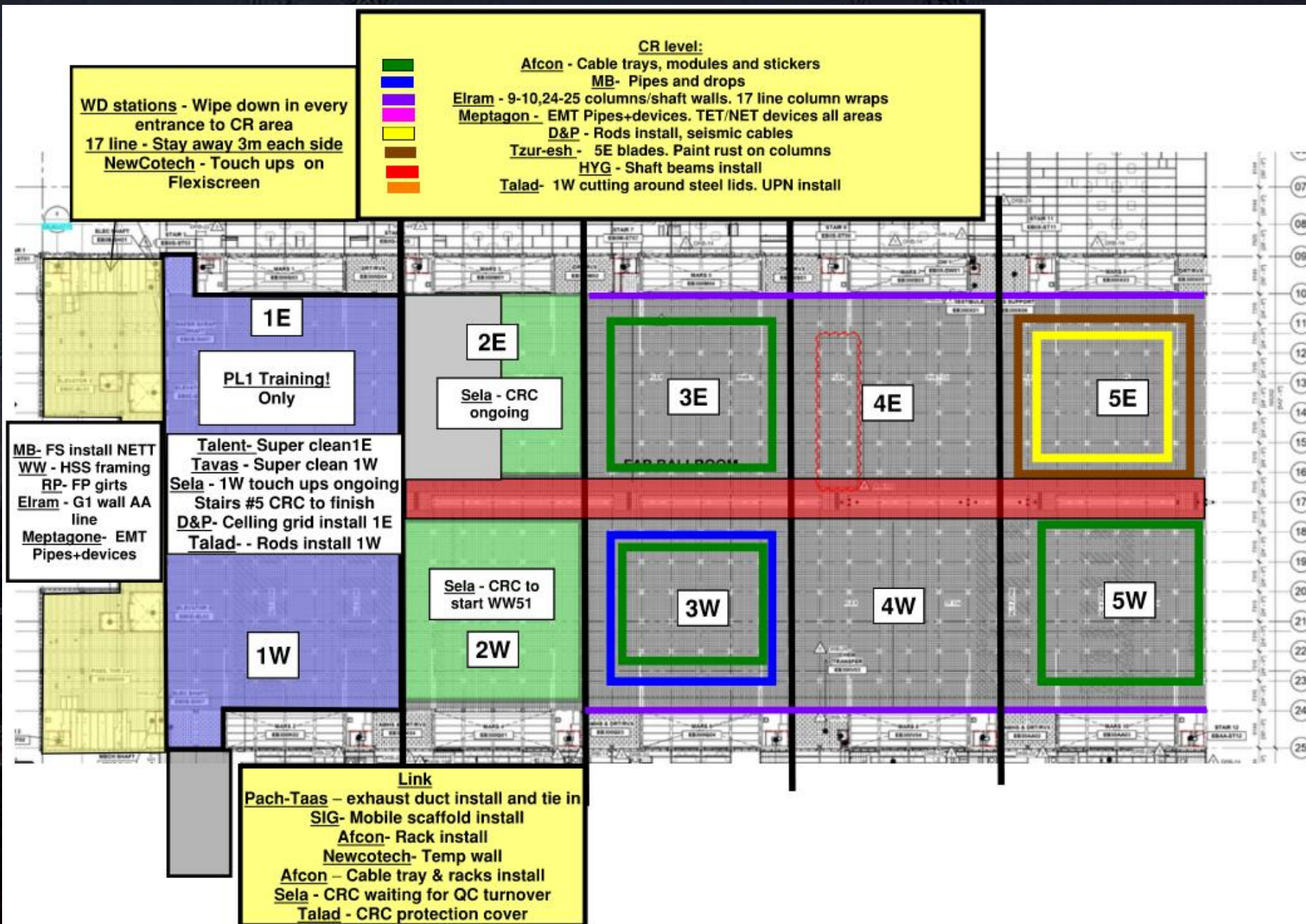


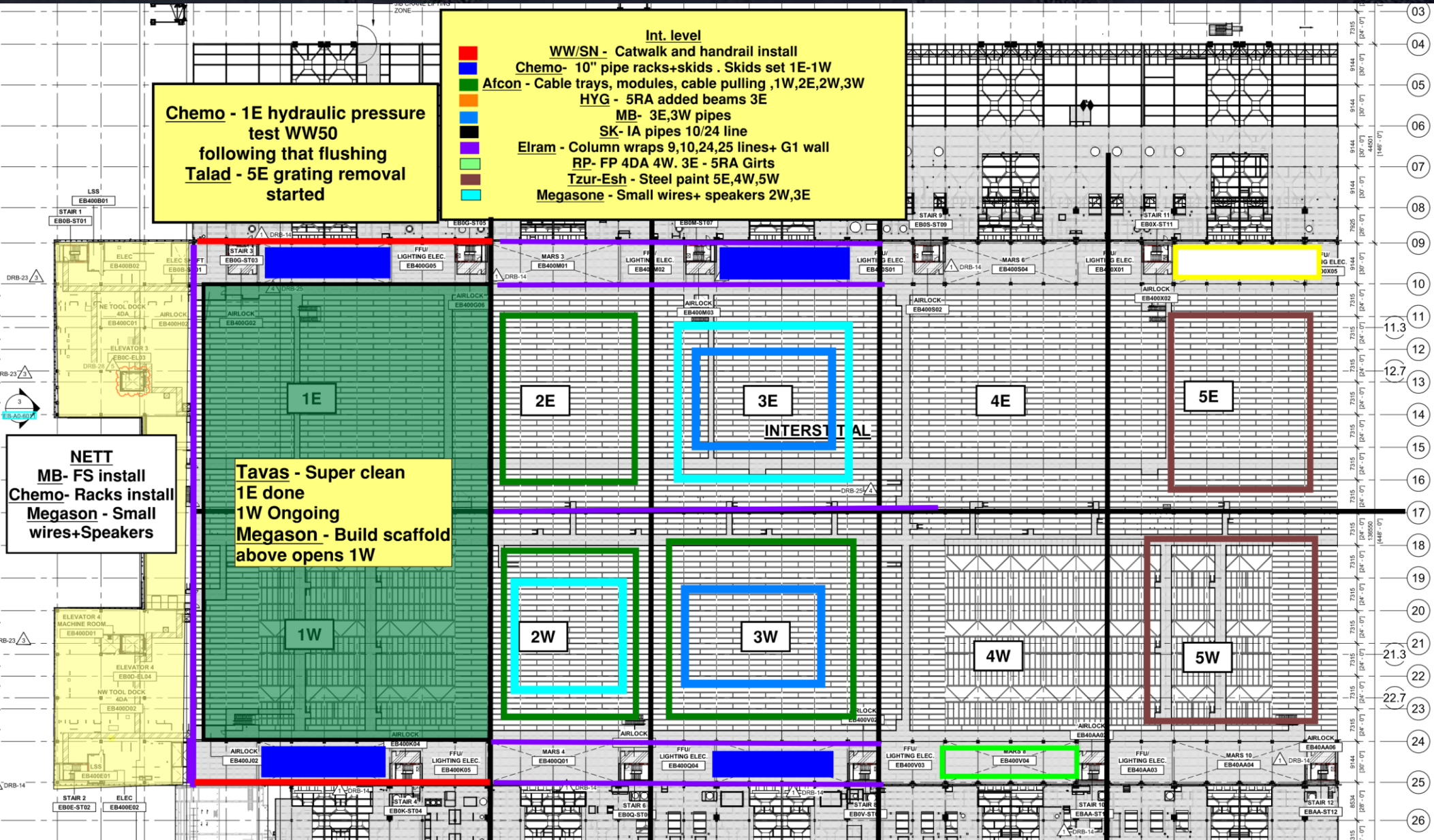
SUBFAB CRC TOPCOAT

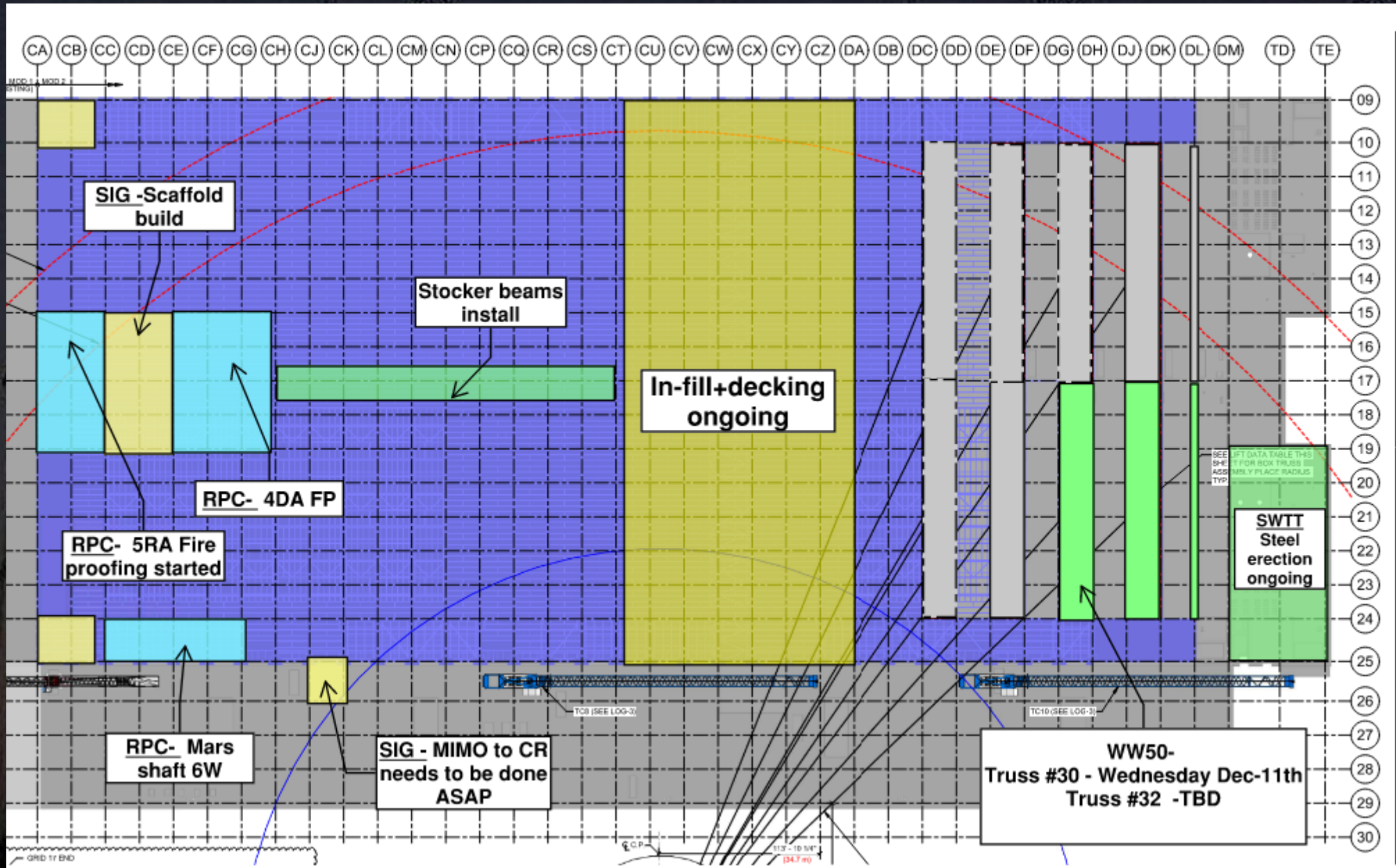


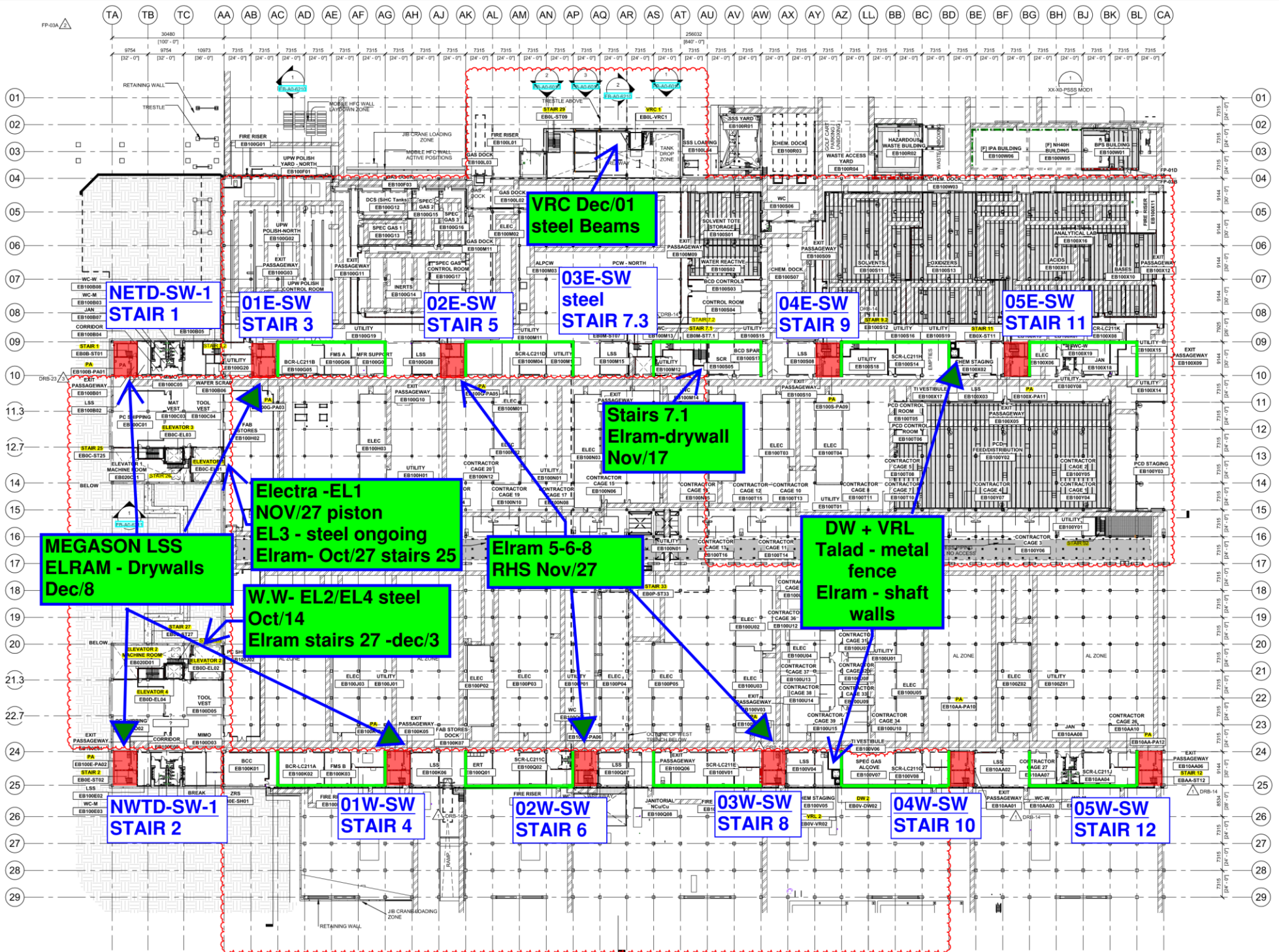
SUBFAB BUILDOUT MOD 2













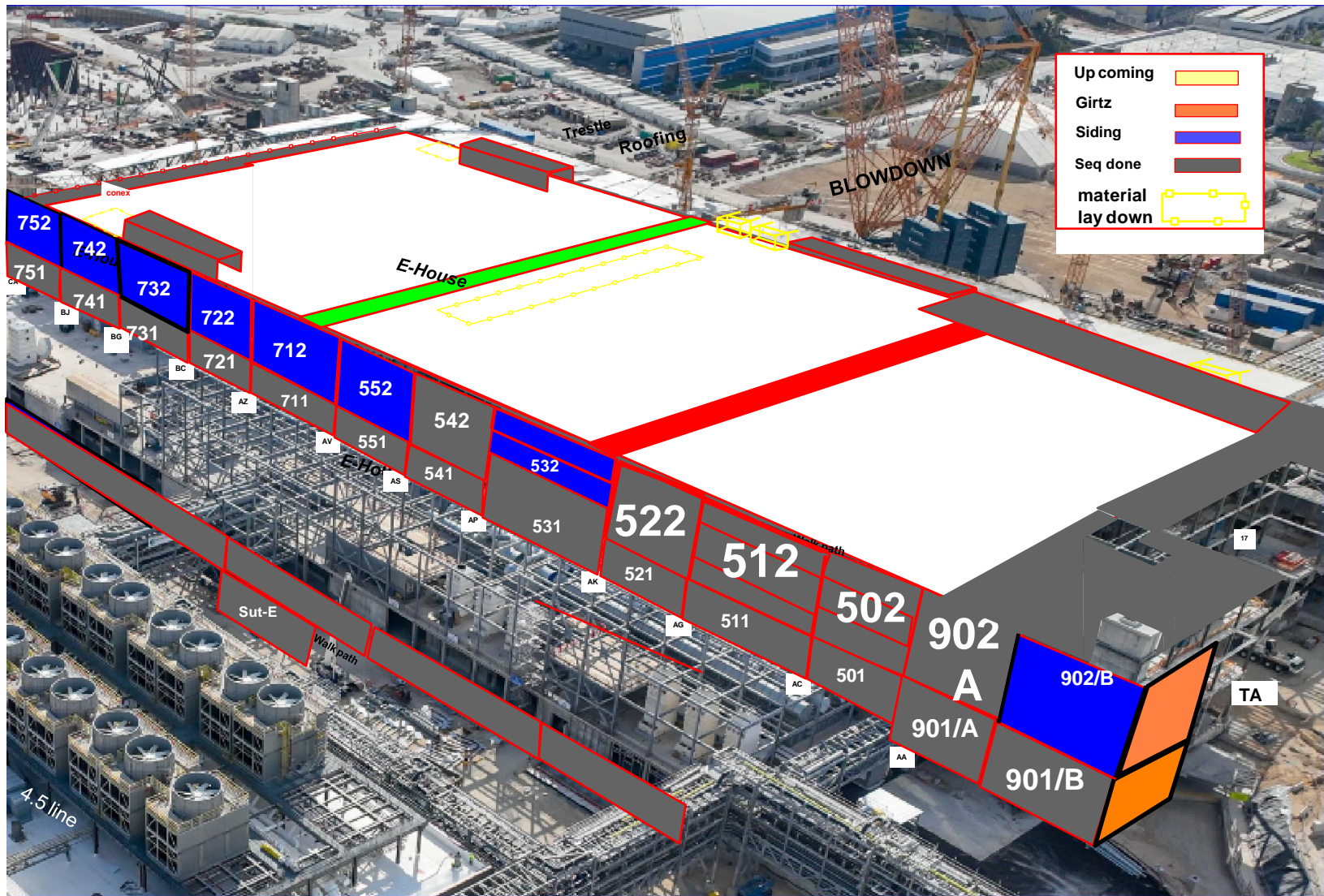
Staircase 2 in the FAB on the Clean Room floor
There is an empty fire extinguisher and powder on the floor

Siding - East FAB - PSSS

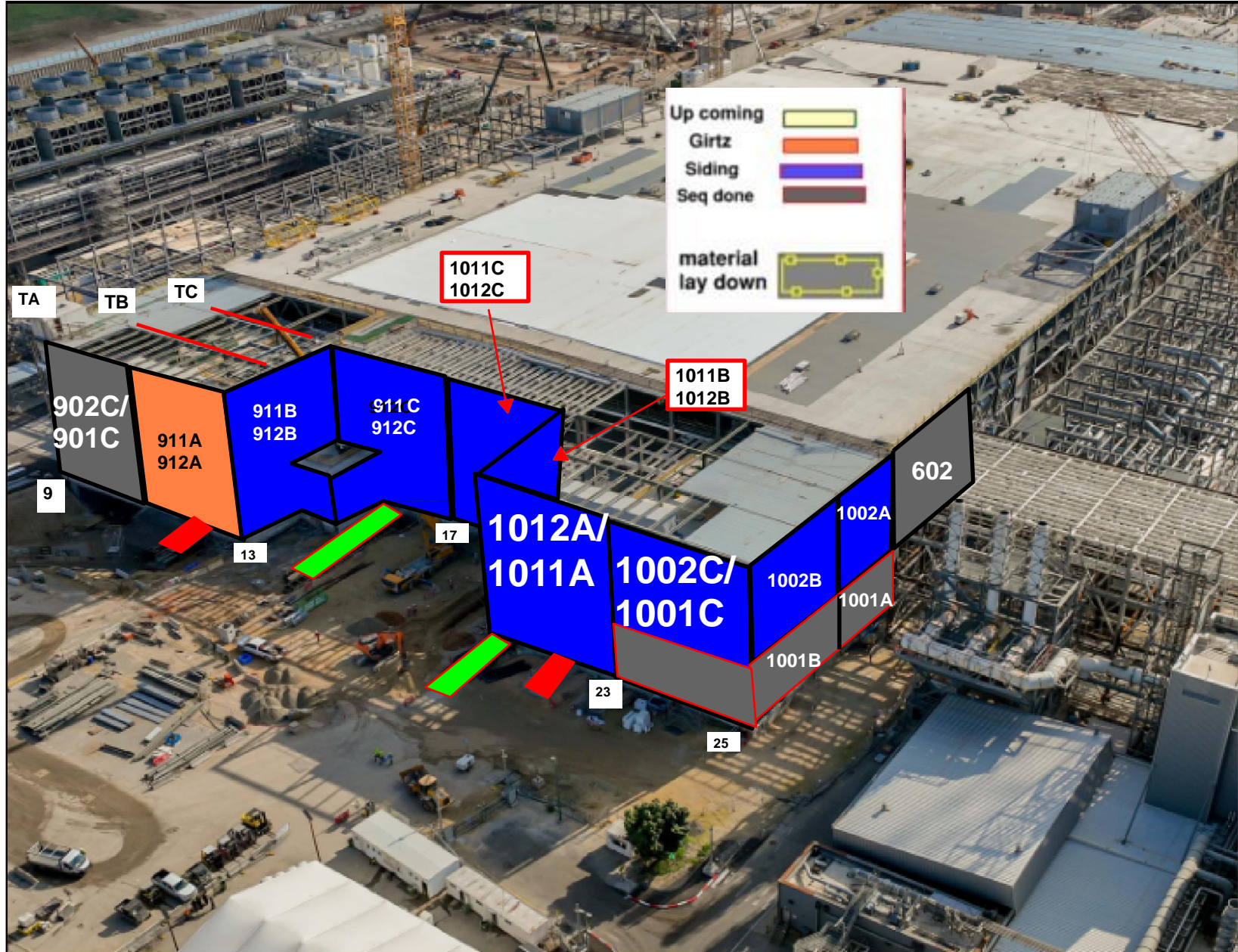
[illegible]

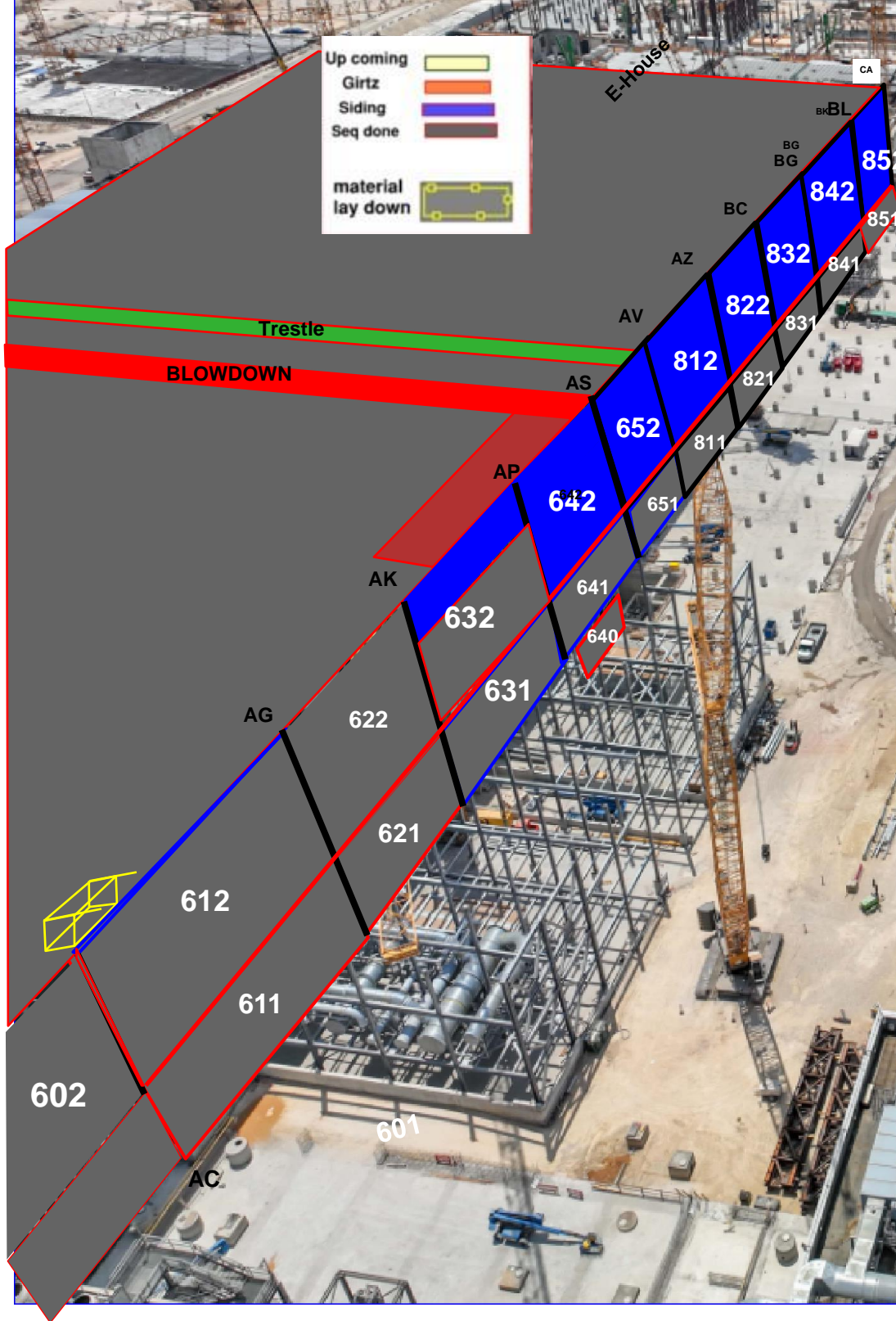
Siding - West FAB - JYG

[illegible]



Walk path

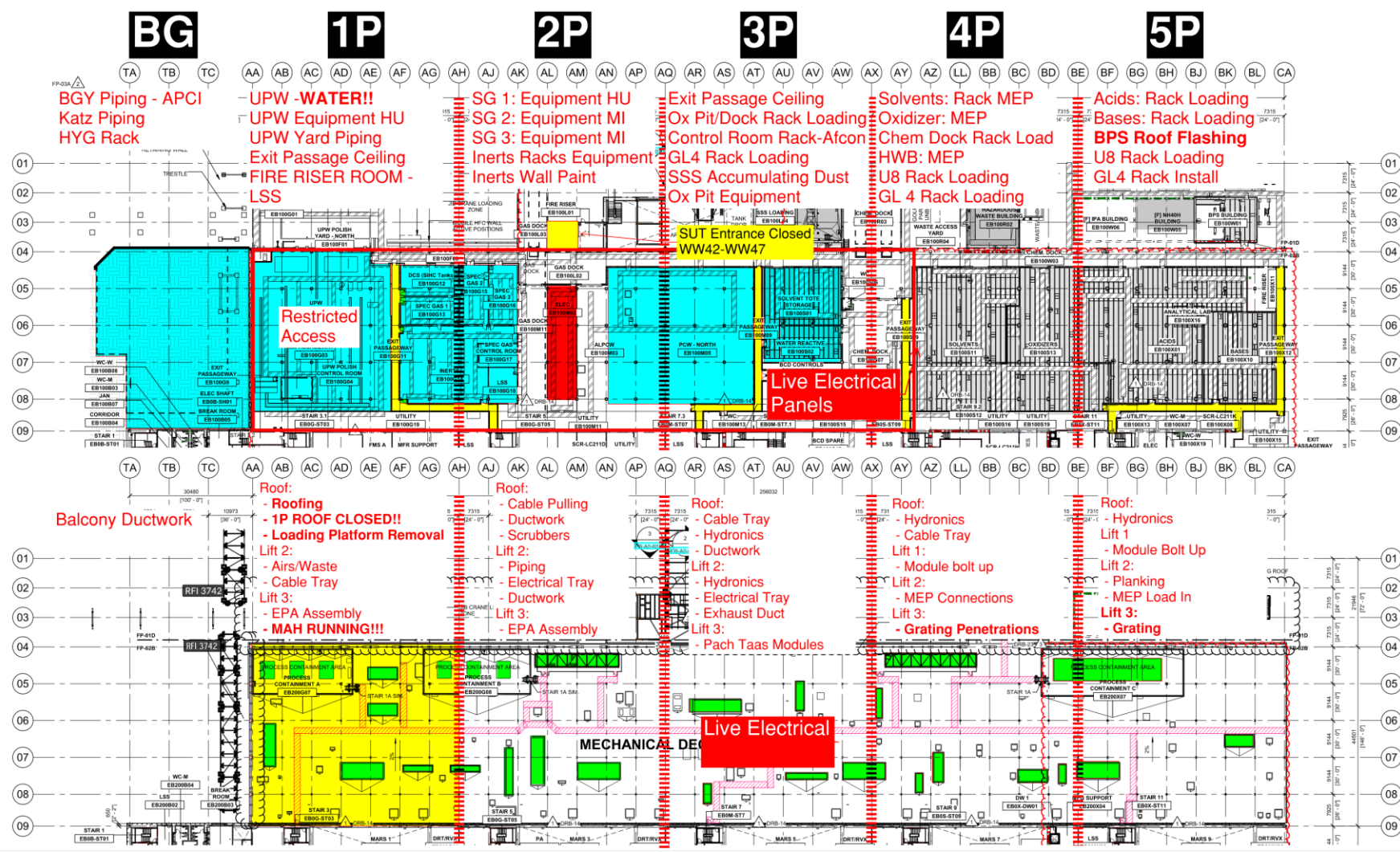




PSSS.1

Utility Level
1YA

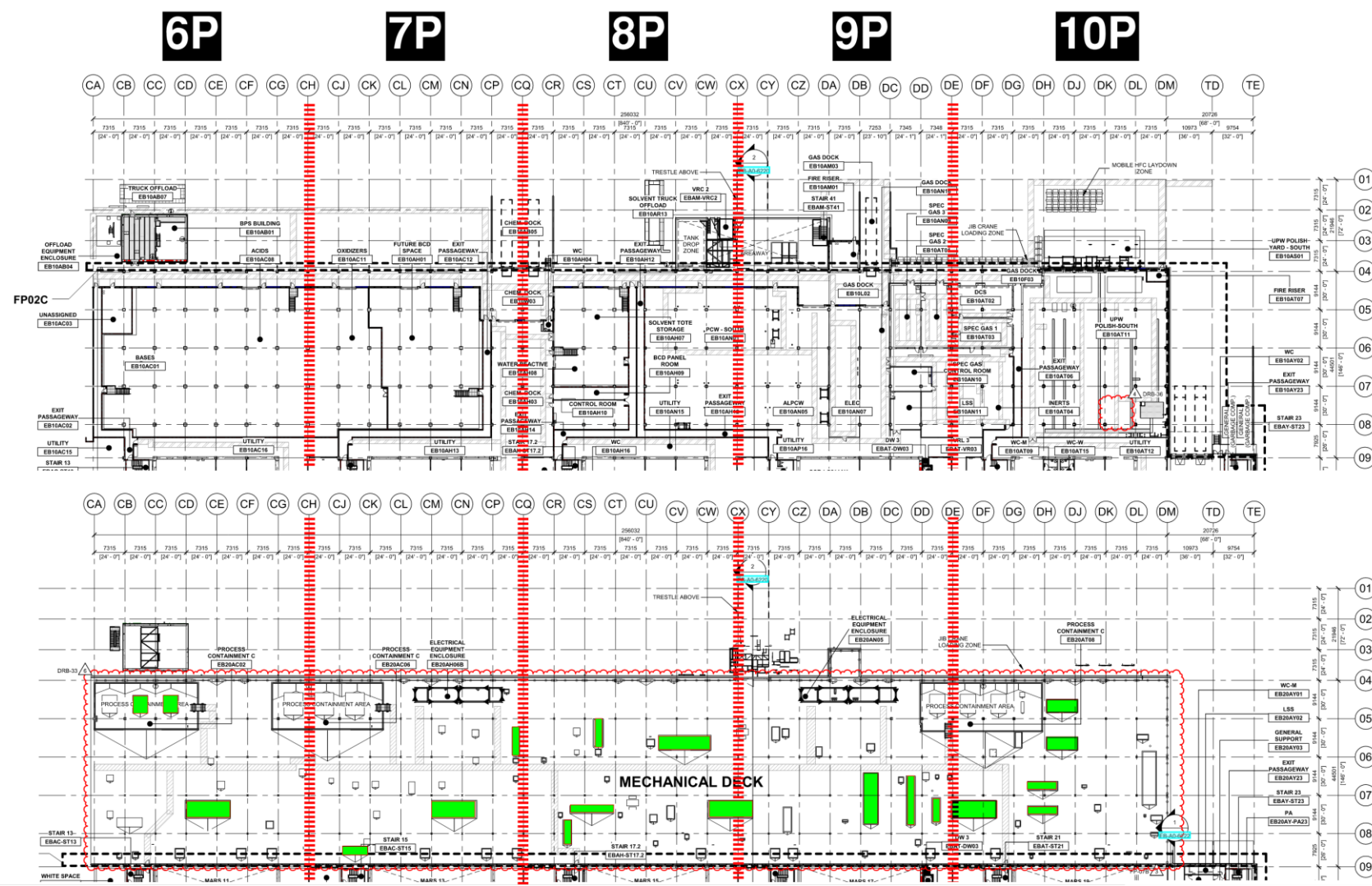
PSSS Roof
2SA



PSSS.2

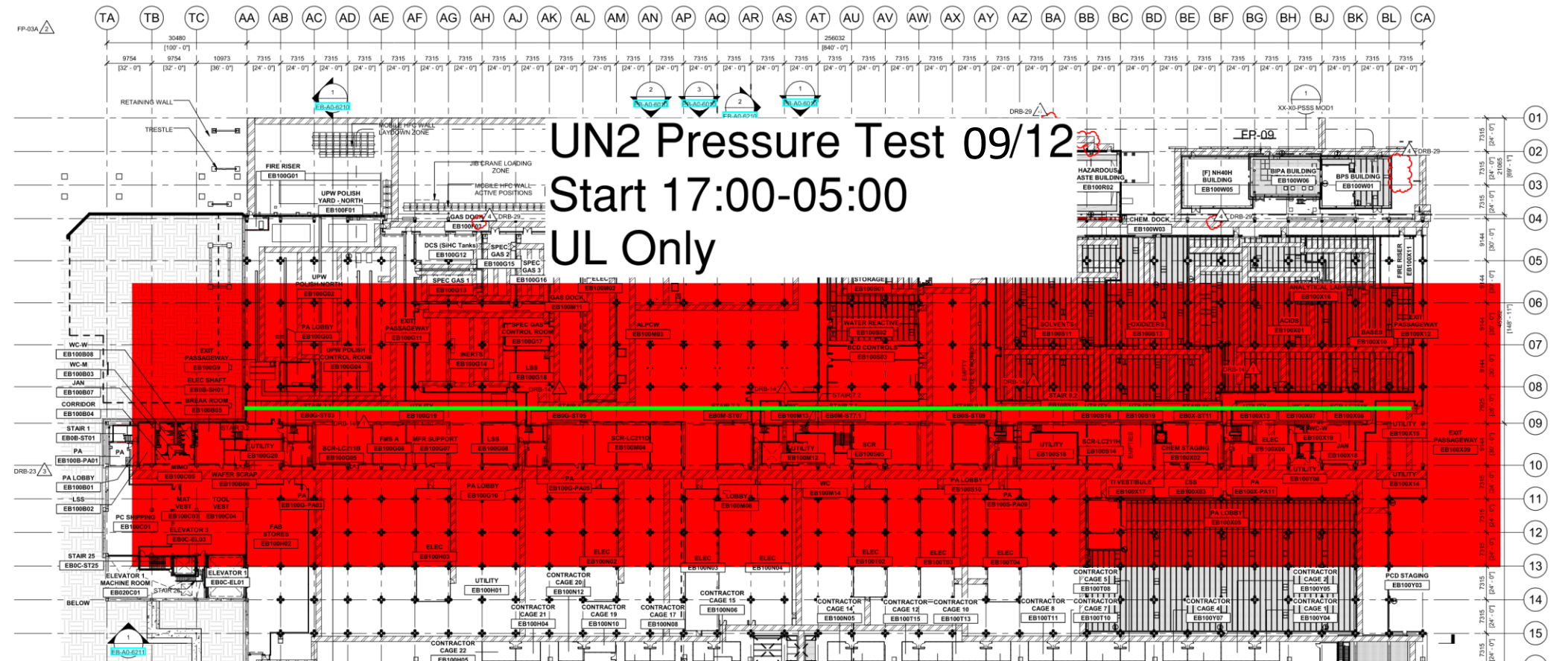
Utility Level
1YA

PSSS Roof
2SA

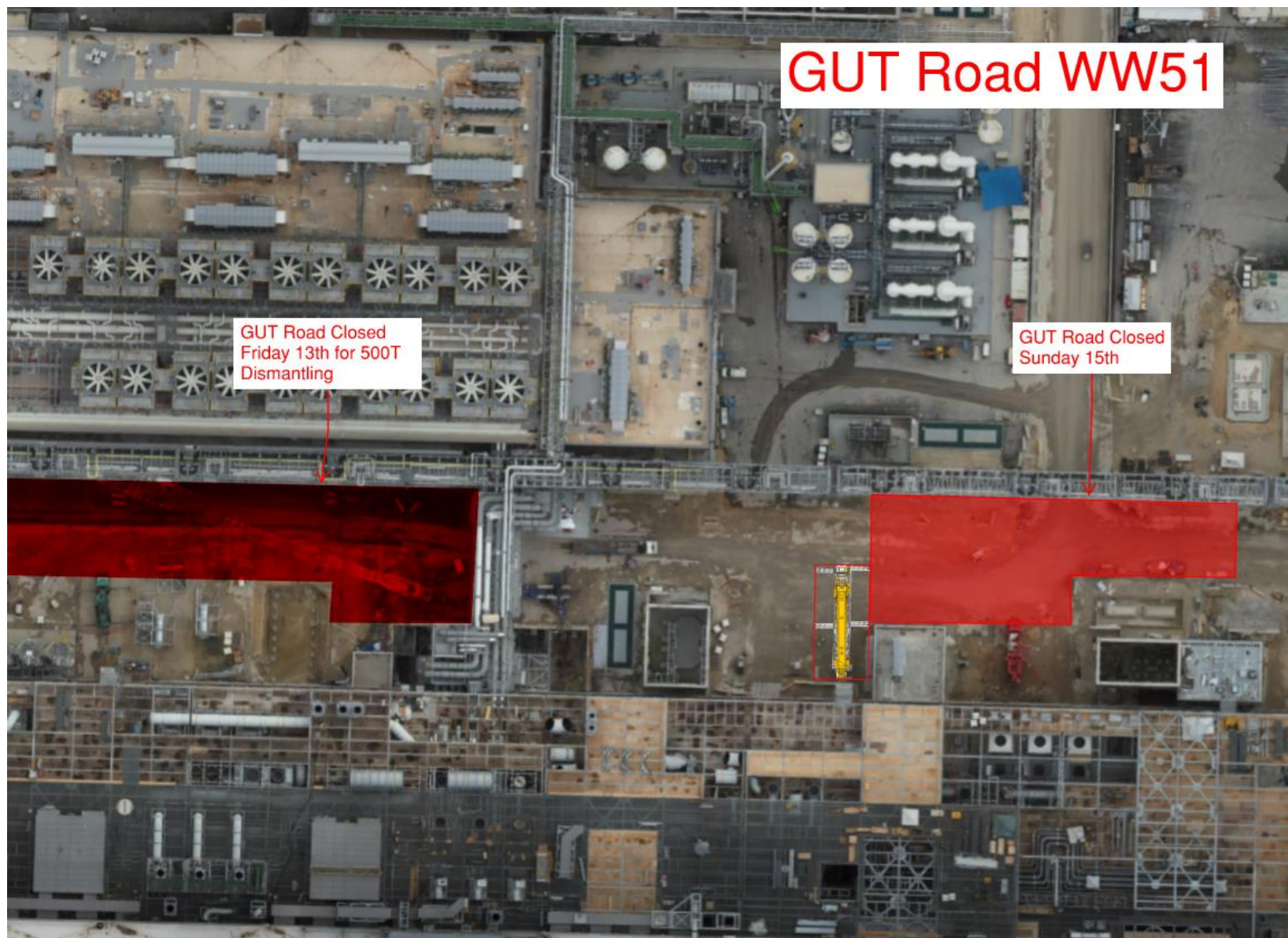


PSSS.1 UN2 Pressure Test

UN2 Pressure Test 09/12
Start 17:00-05:00
UL Only



500T
Moving
Dec.
13-15





WJG 01J, 02J LIFT 2 & 3



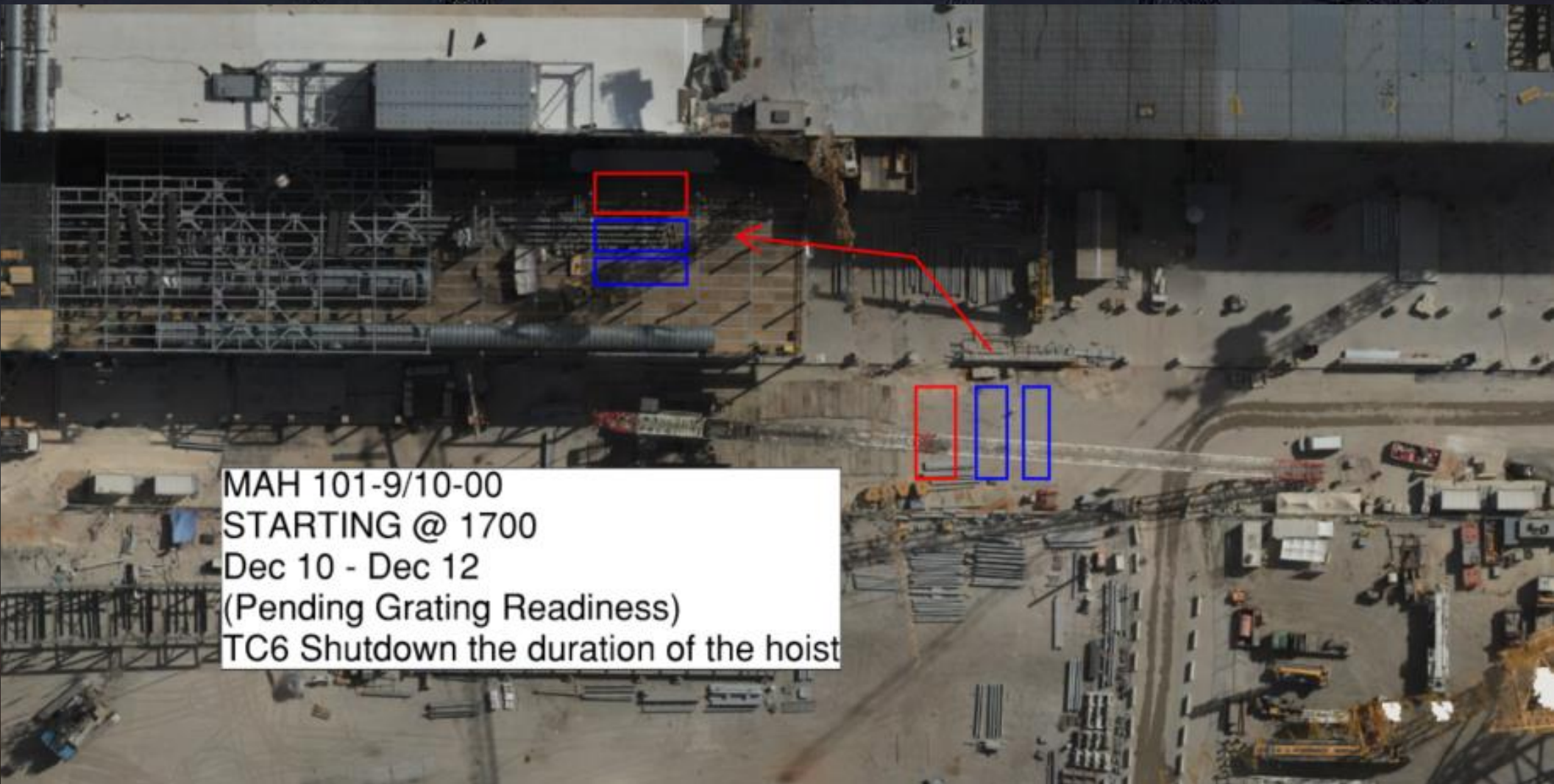


WJG 03J, 04J, 05J LIFT 2 & 3





MAH101-9/10-00 Set WW50



1J 2J 3J 4J 5J

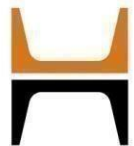
EB100K02 EB100K03 EB100K04 FIRE RISER STAIR 4 EB00-ST04 EB100Q03 FIRE RISER WC EB100Q04 STAIR EB00-ST04 JANITORIAL NCu/Cu EB100Q08 FIRE RISER STAIR EB00-ST04 CHEM STAGING EB100V05 VRL 2 EB00-VRE2 DW 2 EB00-DW02 FIRE RISER STAIR EBAA-ST04 CONTRACTOR CAGE 2B EB100V10 PA LOBBY EB100A01 WC-W EB100A03 WC-M EB100A05 FIRE RISER EB100A06 STAIR 12 EBAA-ST12 ORB-14

MEPTAGON - ALL OVER
PACH TAAS - UPN 138
AFCON LIGHTING / ELECTRICAL
CABLE PULLING

MEPTAGON - ALL OVER

LESICO PIPE + PIPE SUPPORT
PACH TAAS BOLTING
SK - CONDENSATE PIPE

PACH TAAS - BOLTING
CARMEI BIDUD - DUCT
SK - CONDENSATE PIPE
AFCON - CABLE TRAY



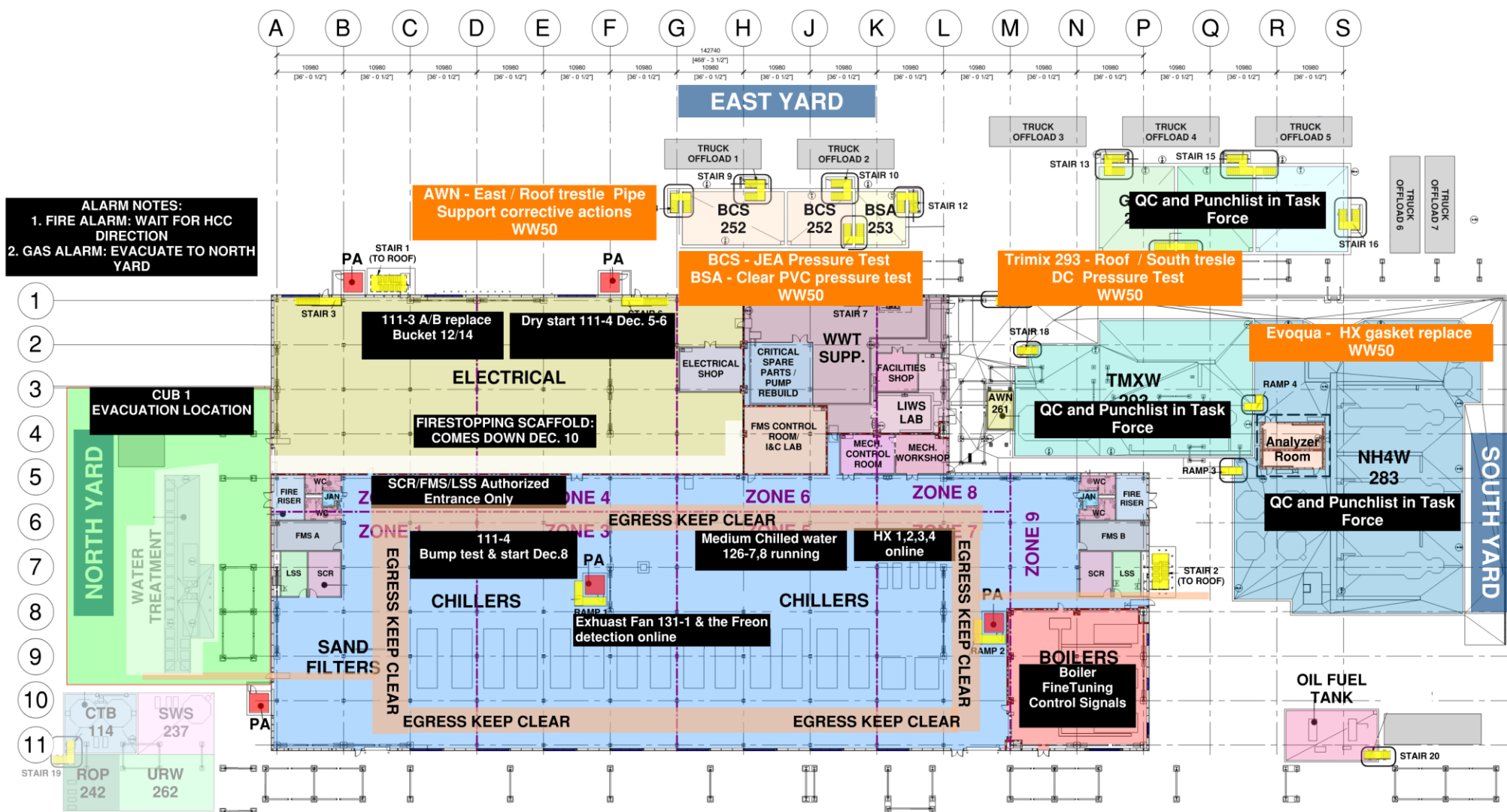
CC3800 DEMOB WW51



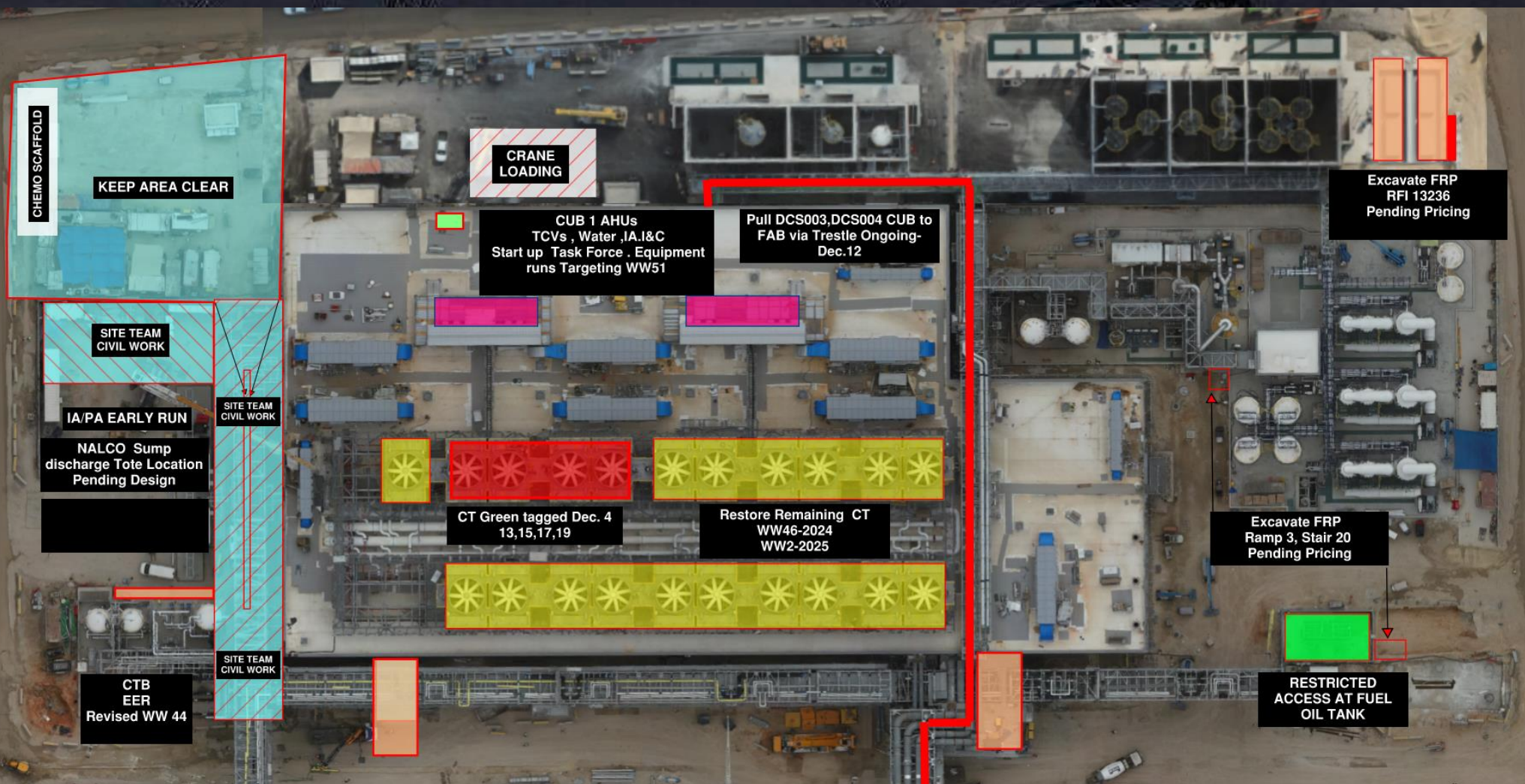


CUB 1

CUB 1 COORDINATION MAP

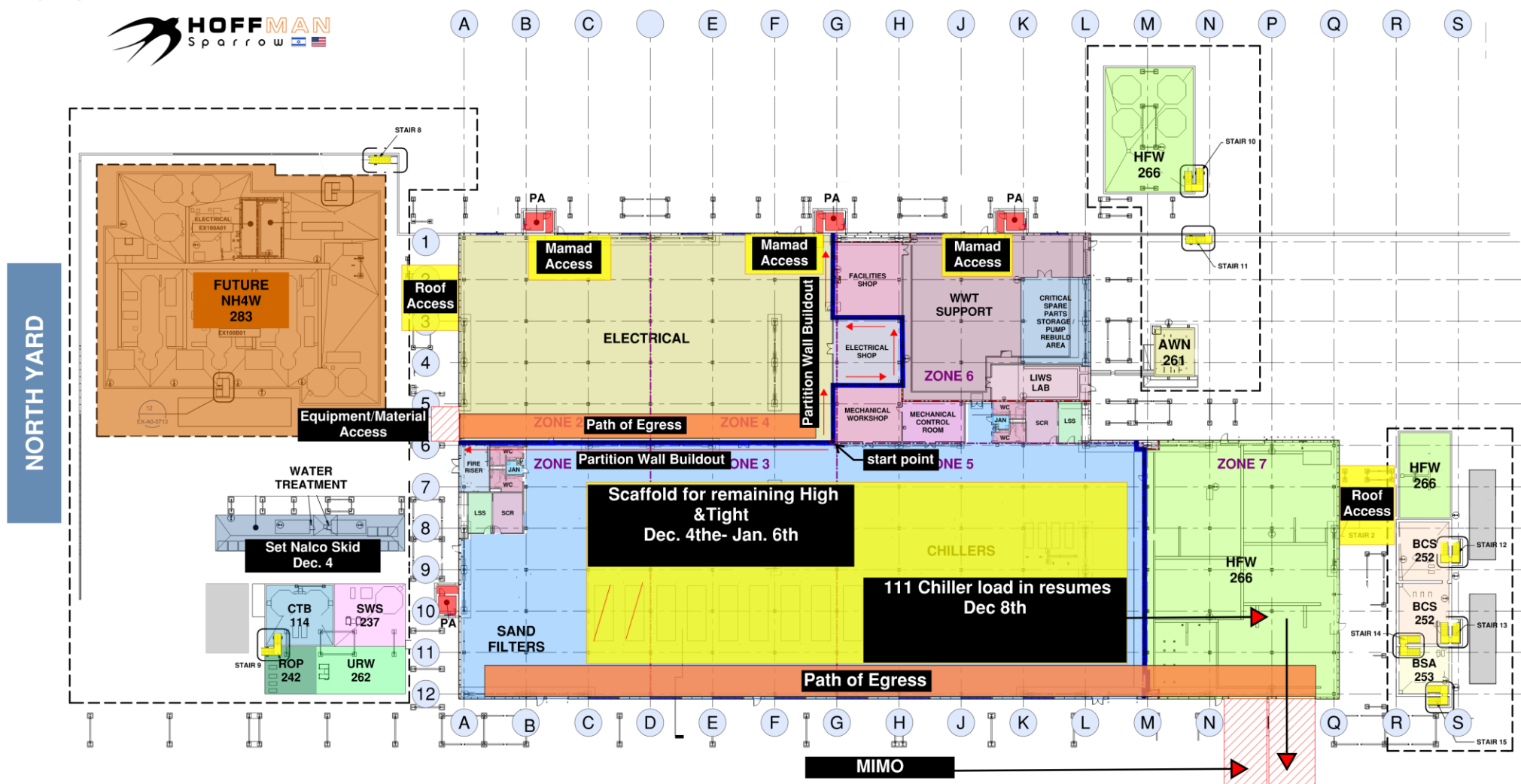


CUB 1 – EXTERIOR/ROOF

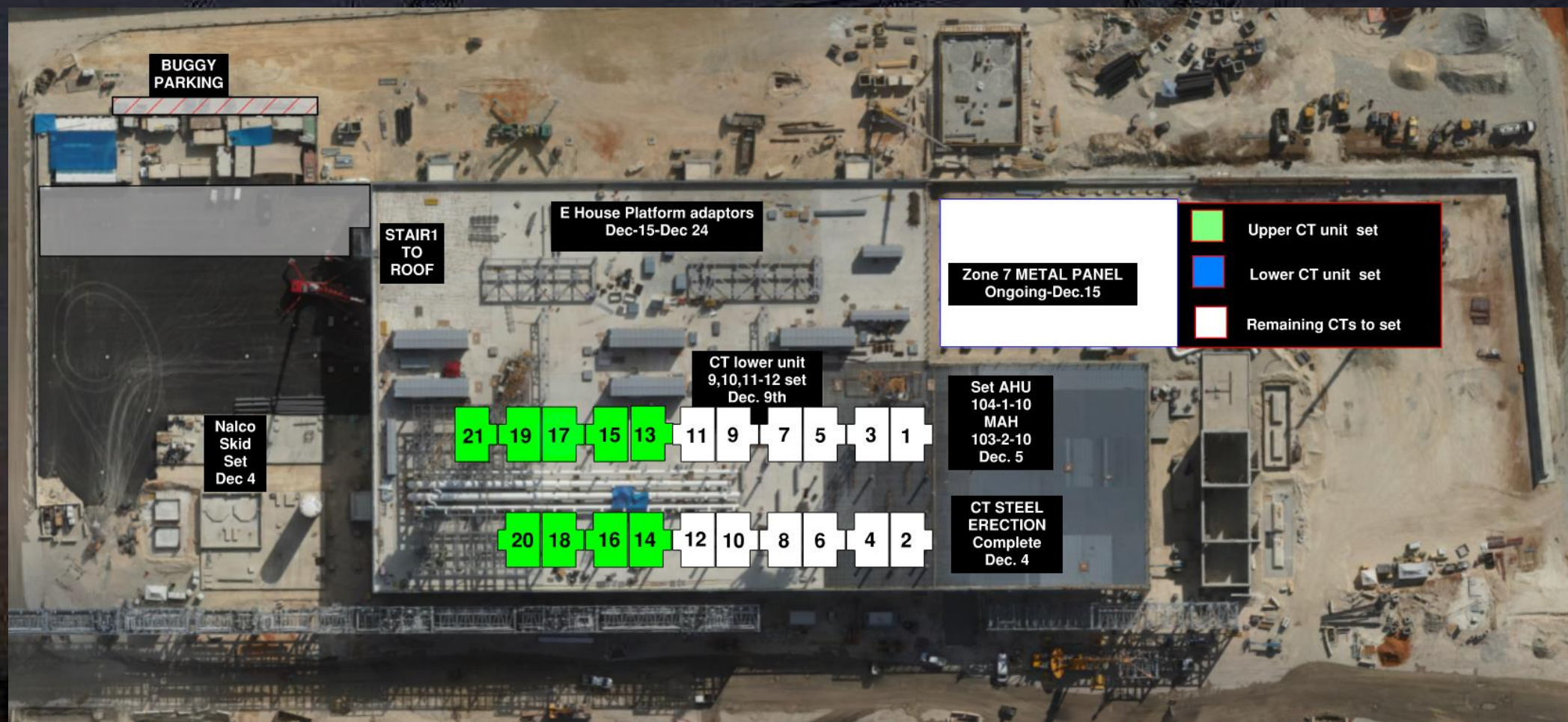


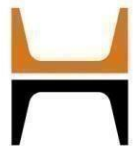
CUB 2- Load in and H&T

CUB 2 COORDINATION MAP



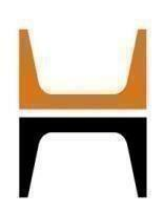
CUB 2 – EXTERIOR/ROOF





GIS GATE
closed 29/Dec /2024





HOFFMAN CONSTRUCTION COMPANY



HOFFMAN
Sparrow  

T18

DEC 3th - DEC 11th

DEC 8th

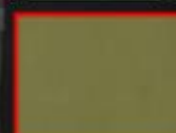
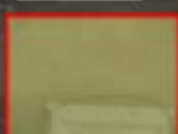
DEC 9th

DEC 10th

done

done

done



Truck will hold outside of Gate B for ~30 min. while Siemens attaches lifting Lugs

E House Deliveries
00:00 to 01:00
Arrival Time.

On Site Dates:
1. Dec -11th
2. Dec -17th
3. Dec - 19th
4. Dec - 24th
5. Dec - 30th
6. Jan - 2nd
7. Jan - 7th
8. Jan - 10th

Truck Turn
Around

Tandem Mobile
Offload 4,5,6

Sarens
Offload
1,2,3,7,8

E House
Offload/Staging

Intel Kiryat Gat

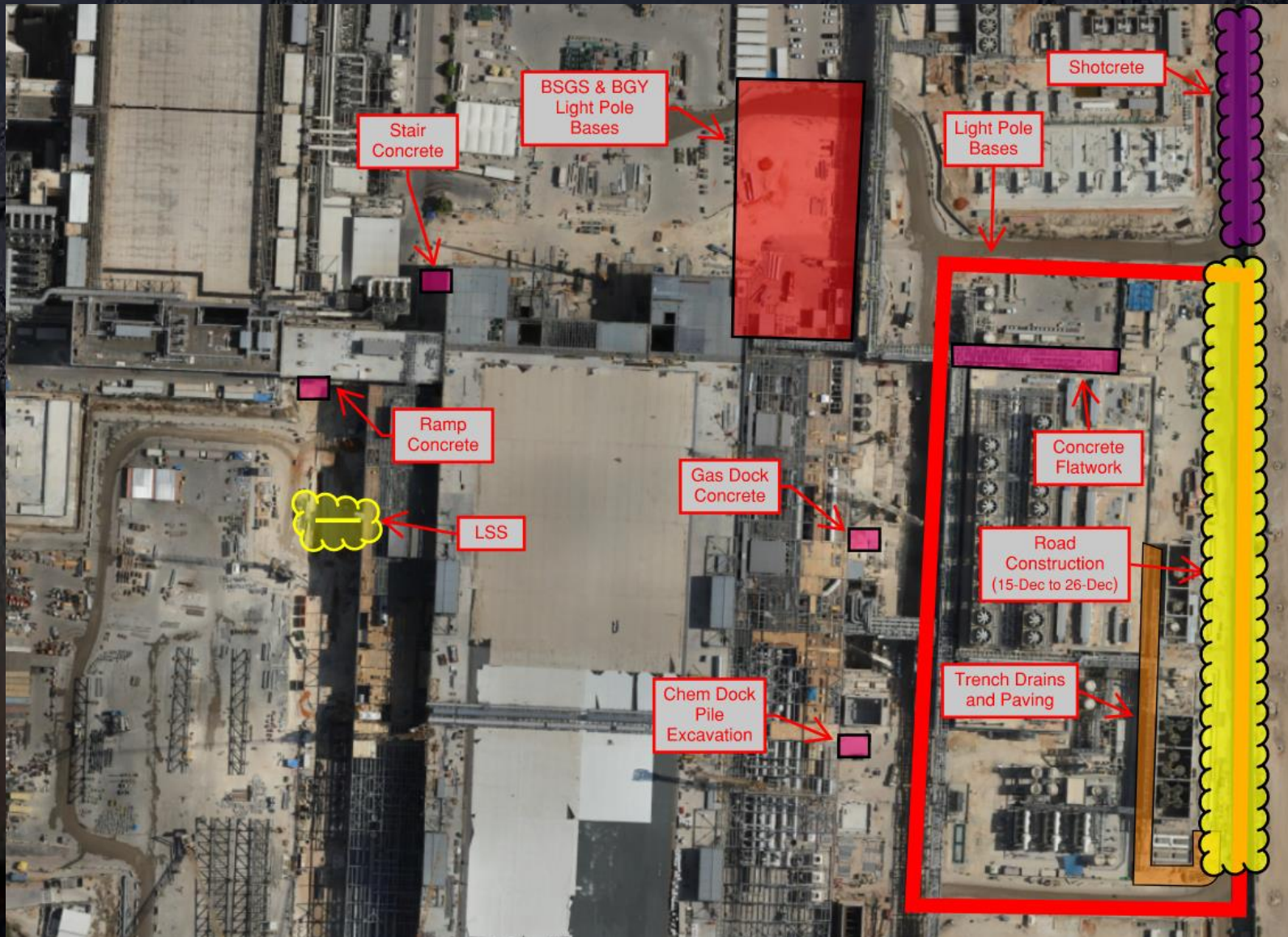
FAB-28



Daily Coordination Meeting

Site Logistics

North





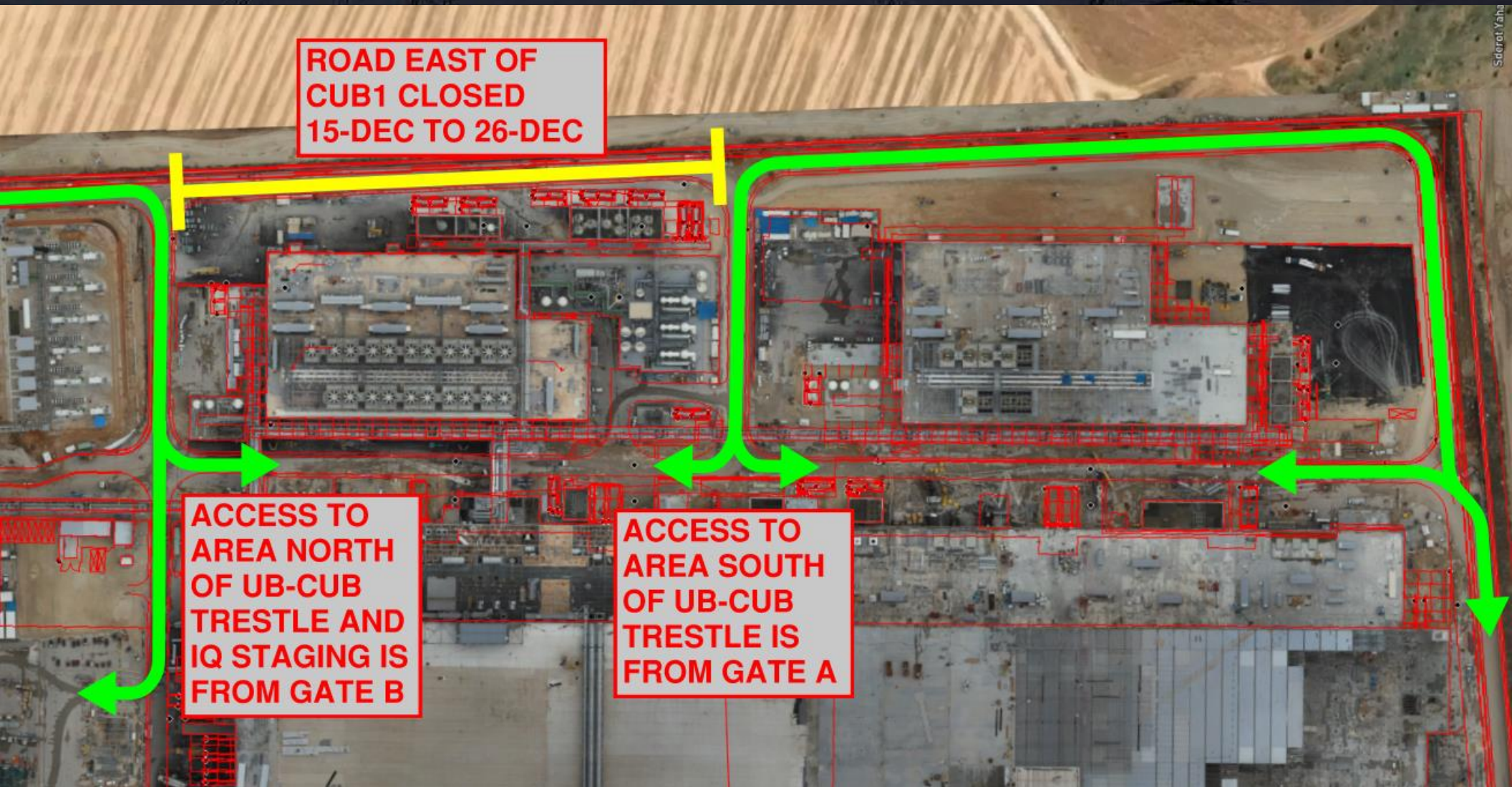
HOFFMAN CONSTRUCTION COMPANY



Daily Coordination Meeting

Site Logistics

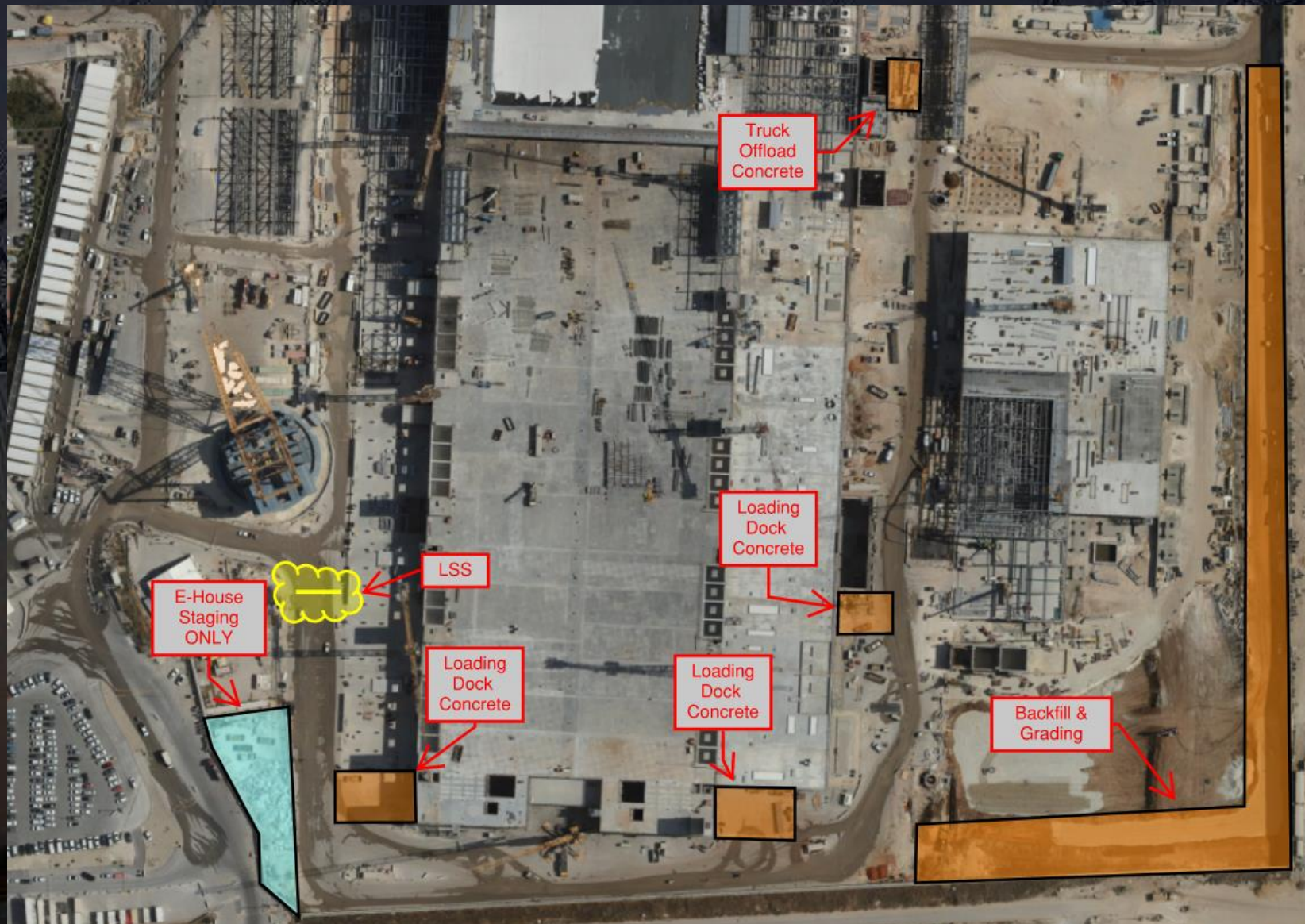
East CUB1 Road Closure



Daily Coordination Meeting

Site Logistics

South



Area Assessment

When arriving at the work area, before starting any work, a scan and inspection of the area must be carried out to ensure it is free of hazards or dangers. If risks cannot be minimized or eliminated, at least be aware of them.

Here is a list of some topics that need to be checked before starting work:

- Visual inspection of the work area.
- Check for any active or live systems around us.
- Check for any openings or holes in the area, including ensuring the proper covering of openings or holes. If a hazard is found, report it and do not begin working near the hazard.
- Verify approval for all relevant plans and forms for the task (RAMS, fall arrest plan, confined space, hot work, working at height, HRA, and more).

Daily Coordination Meeting



14:00 Sign In