

Daily Coordination Meeting



14:00 Sign In

Daily Coordination Meeting

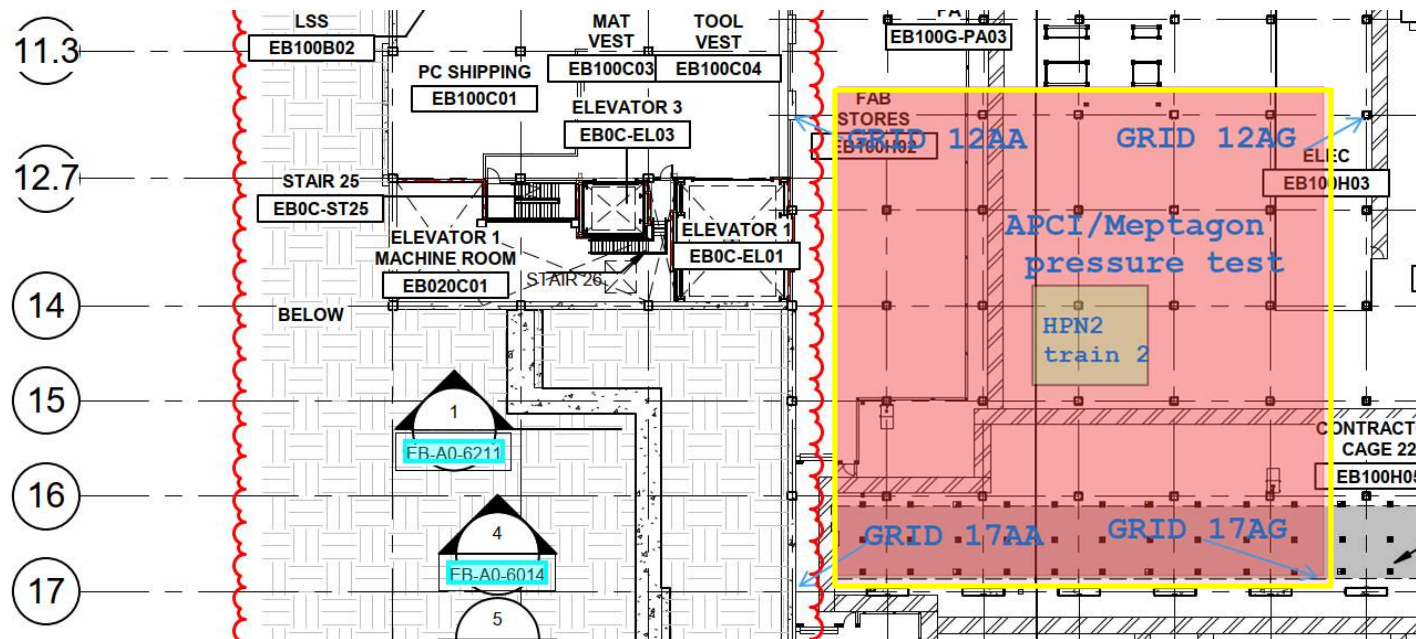
General Topics:

- Trestle Testing Impacts
- BGY Closure for Blowdown



UTILITY LEVEL PRESS TEST

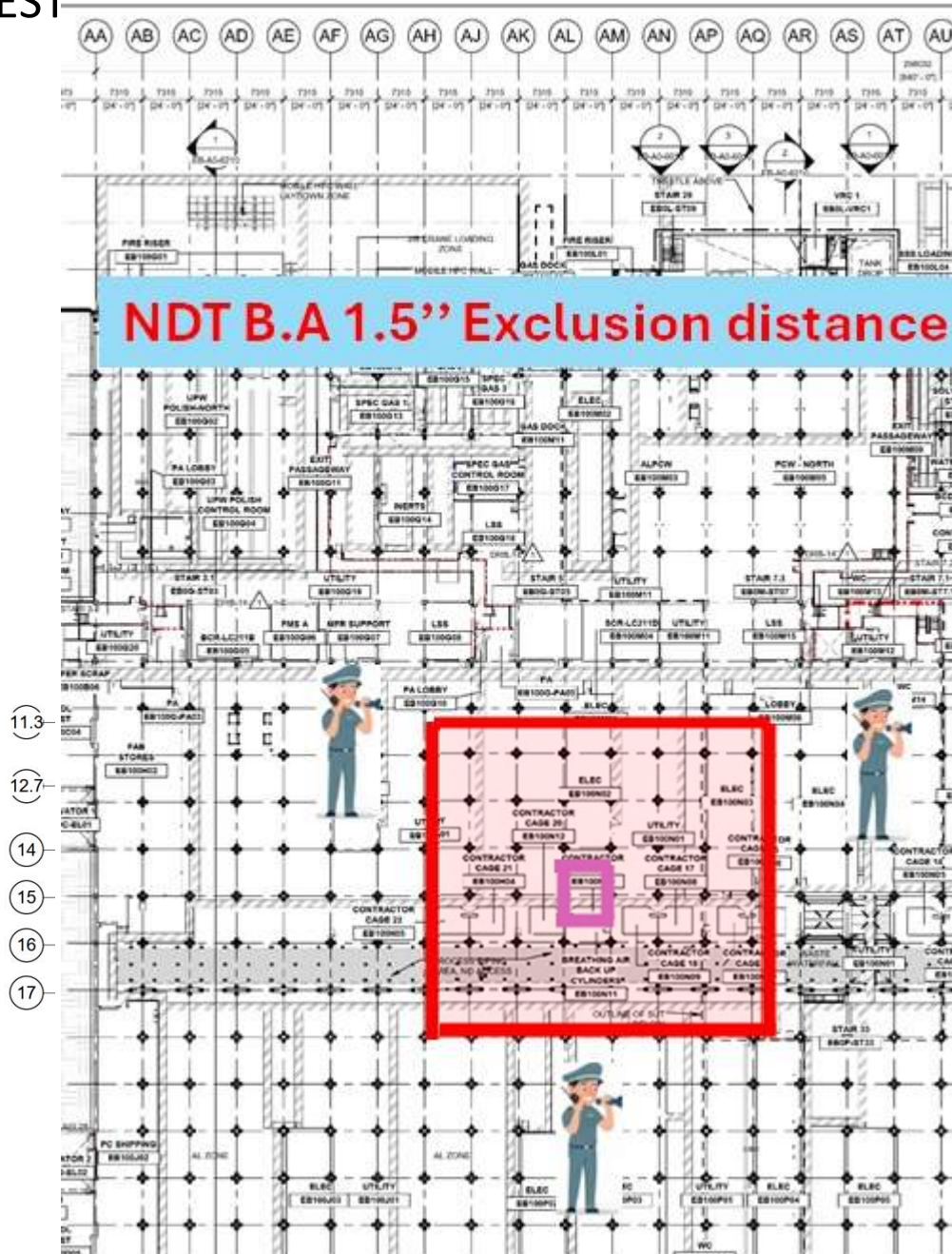
Meptagon
Press test GN2/HPN2
3/5
From 17:00
till 3:00





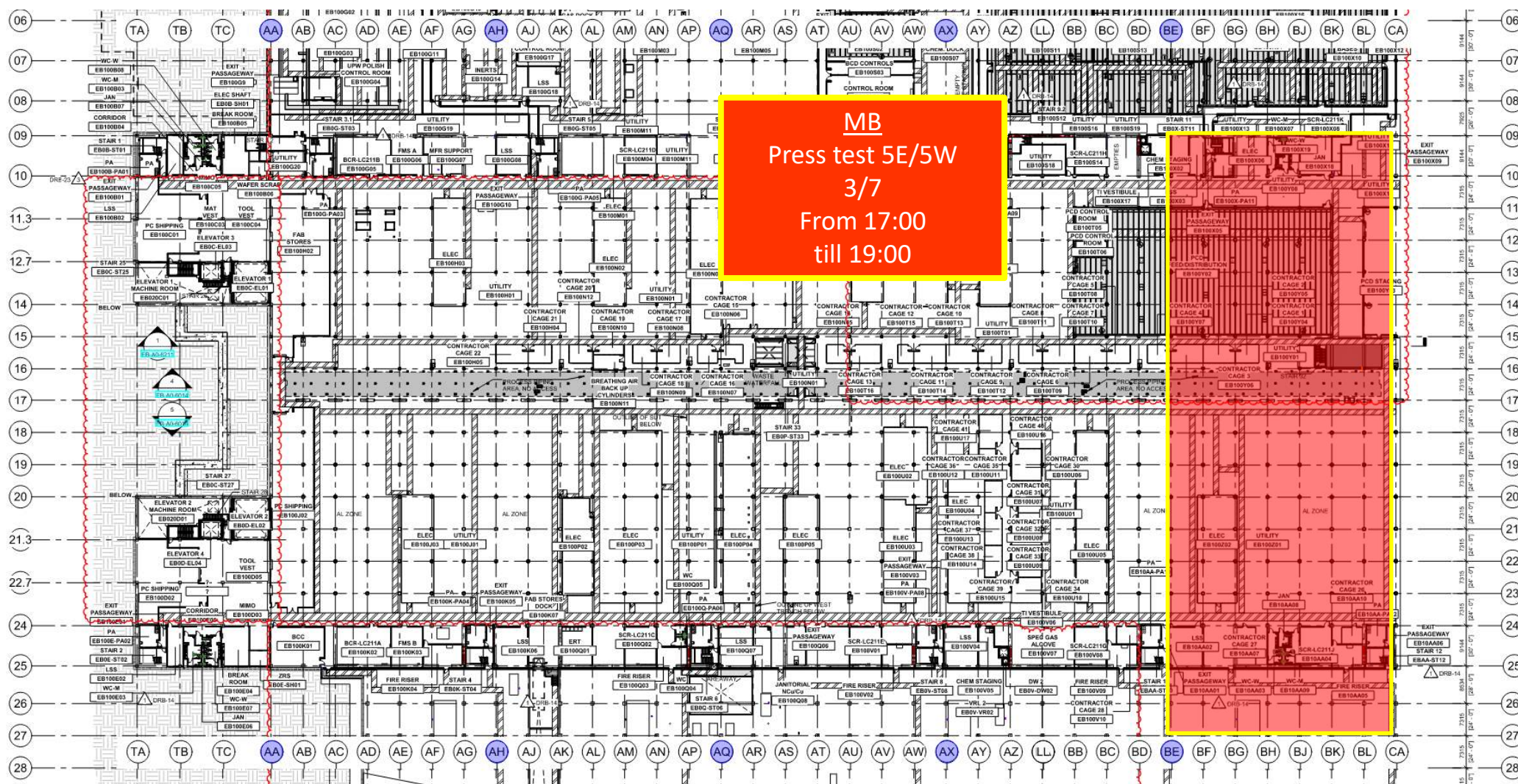
UTILITY LEVEL PRESS TEST

Lesico
NDT test
3/6
From 17:00
till 4:00



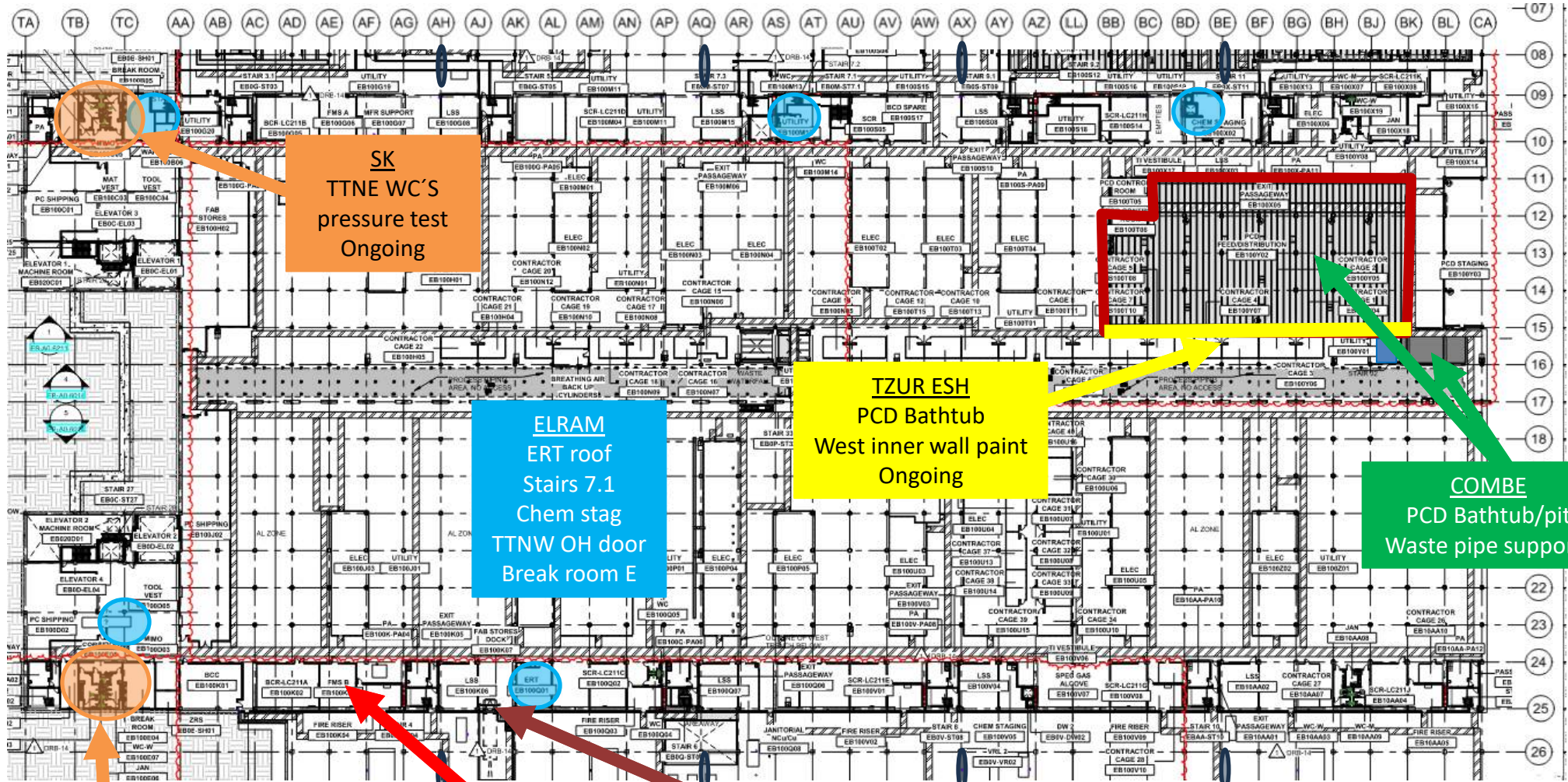


UTILITY LEVEL PRESS TEST





UTILITY LEVEL MOD1



SK
TTNE WC'S
pressure test
Ongoing

ELRAM
ERT roof
Stairs 7.1
Chem stag
TTNW OH door
Break room E

TZUR ESH
PCD Bathtub
West inner wall paint
Ongoing

COMBE
PCD Bathtub/pit
Waste pipe supports

SamiN
TTNW WC'S
pressure test done
SK Go Time!!

CARMEL DUCT
Remove duct for RHS install
Till 3/11

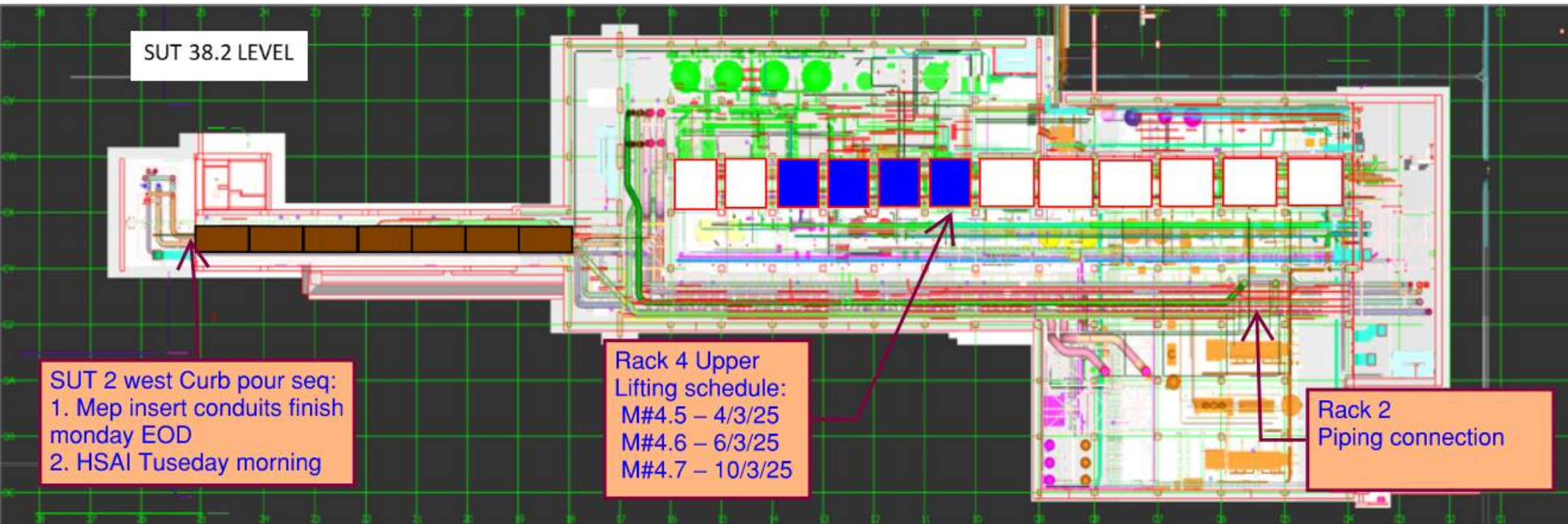
HYG
Install RHS 3/4

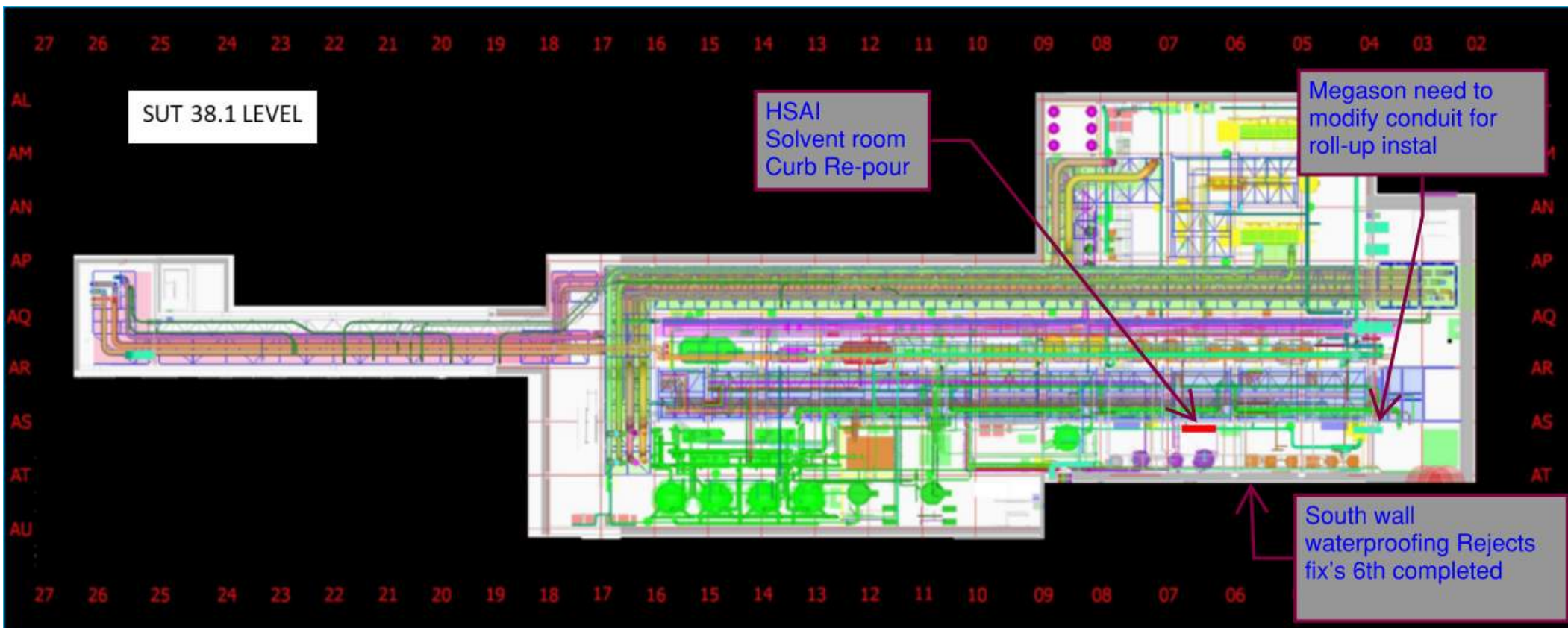
SUT 38.2 LEVEL

SUT 2 west Curb pour seq:
1. Mep insert conduits finish
monday EOD
2. HSAI Tuseday morning

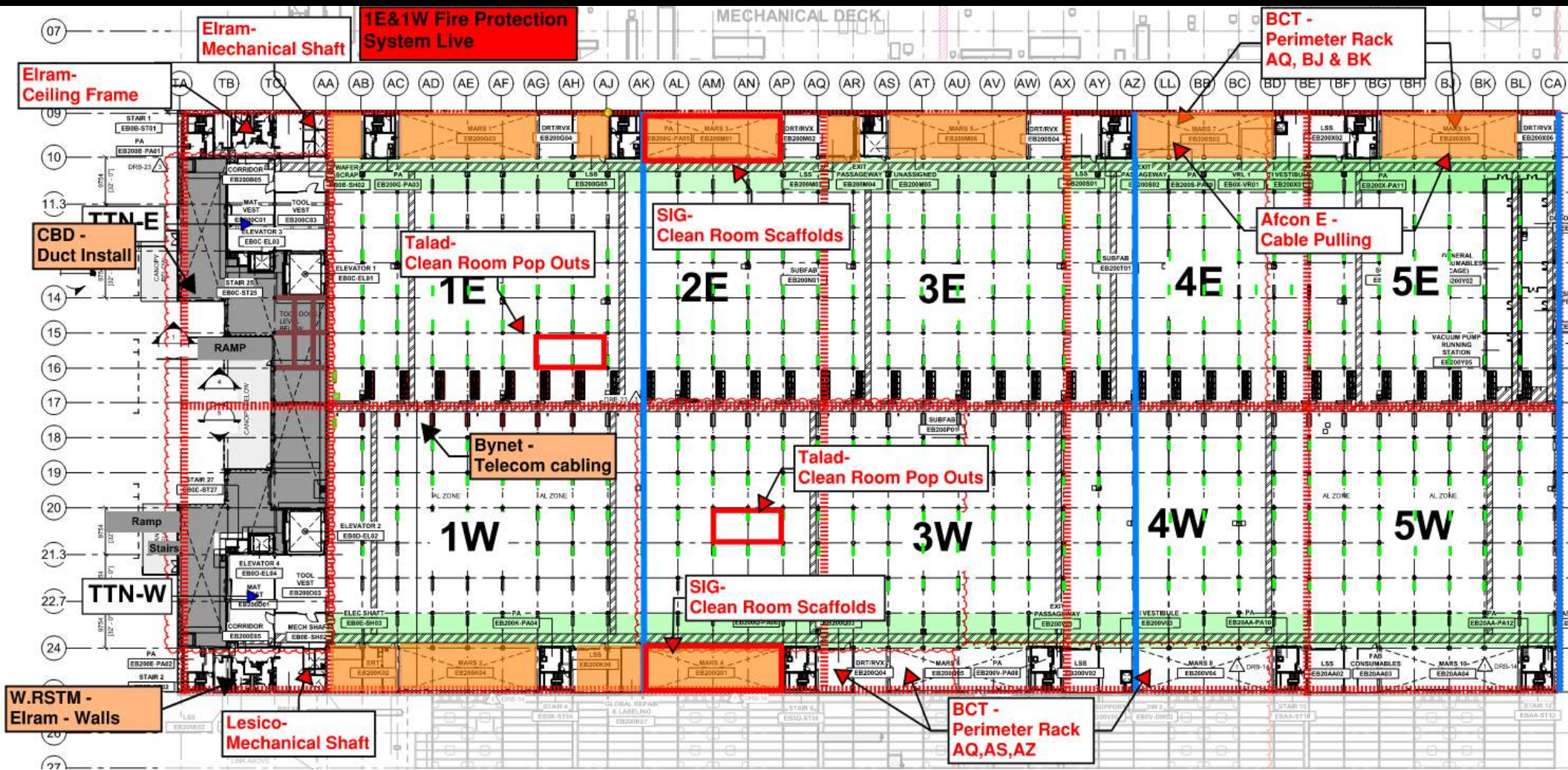
Rack 4 Upper
Lifting schedule:
M#4.5 – 4/3/25
M#4.6 – 6/3/25
M#4.7 – 10/3/25

Rack 2
Piping connection

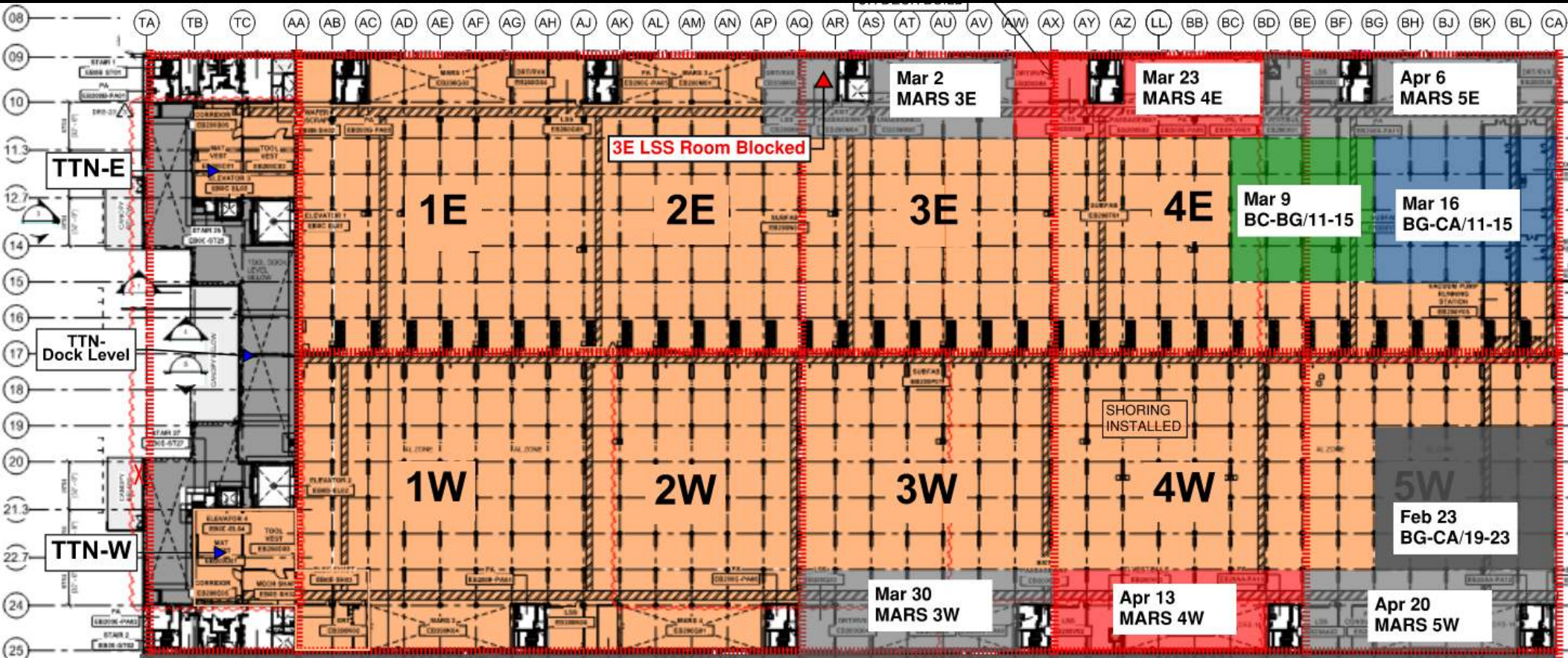




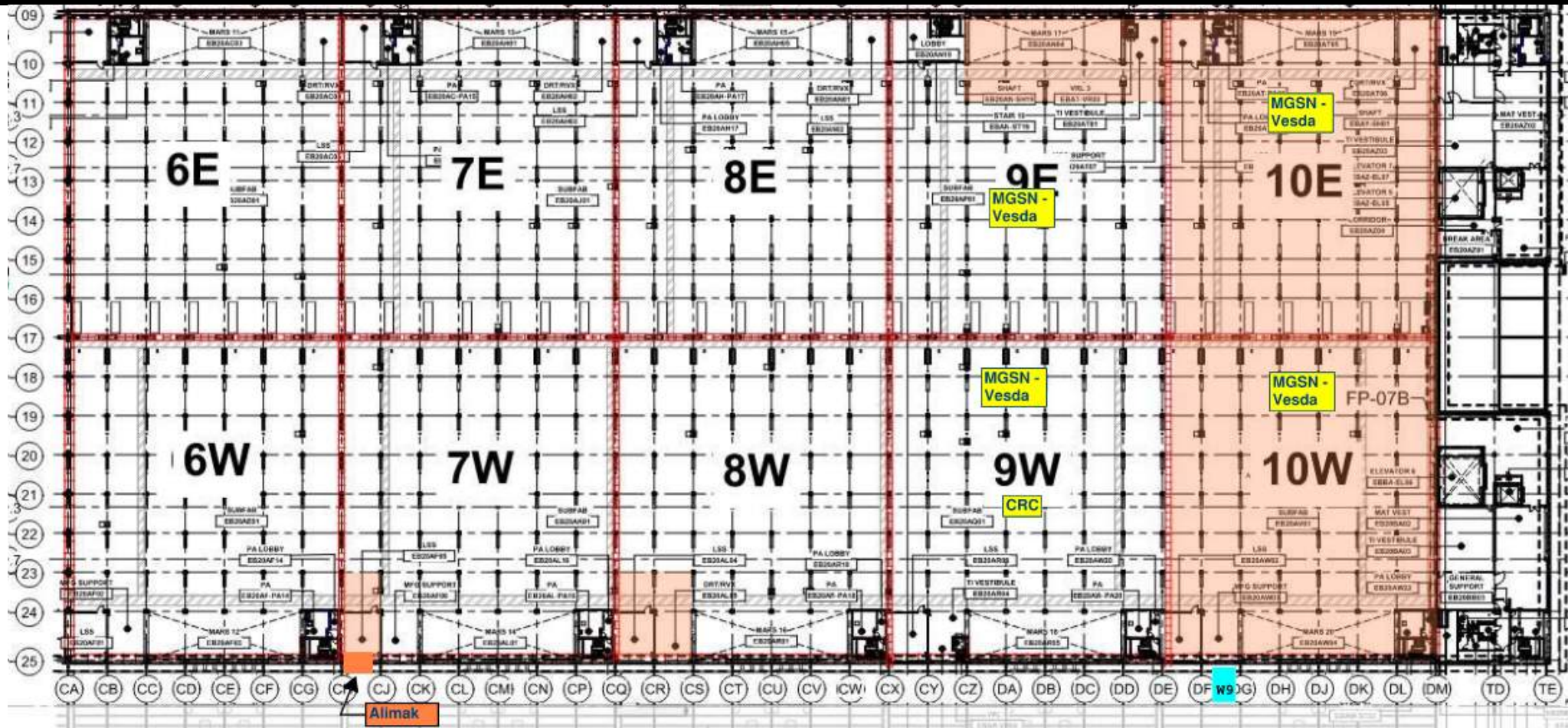
SUBFAB BUILDOUT MOD 1



SUBFAB CRC TOPCOAT



SUBFAB BUILDOUT MOD 2

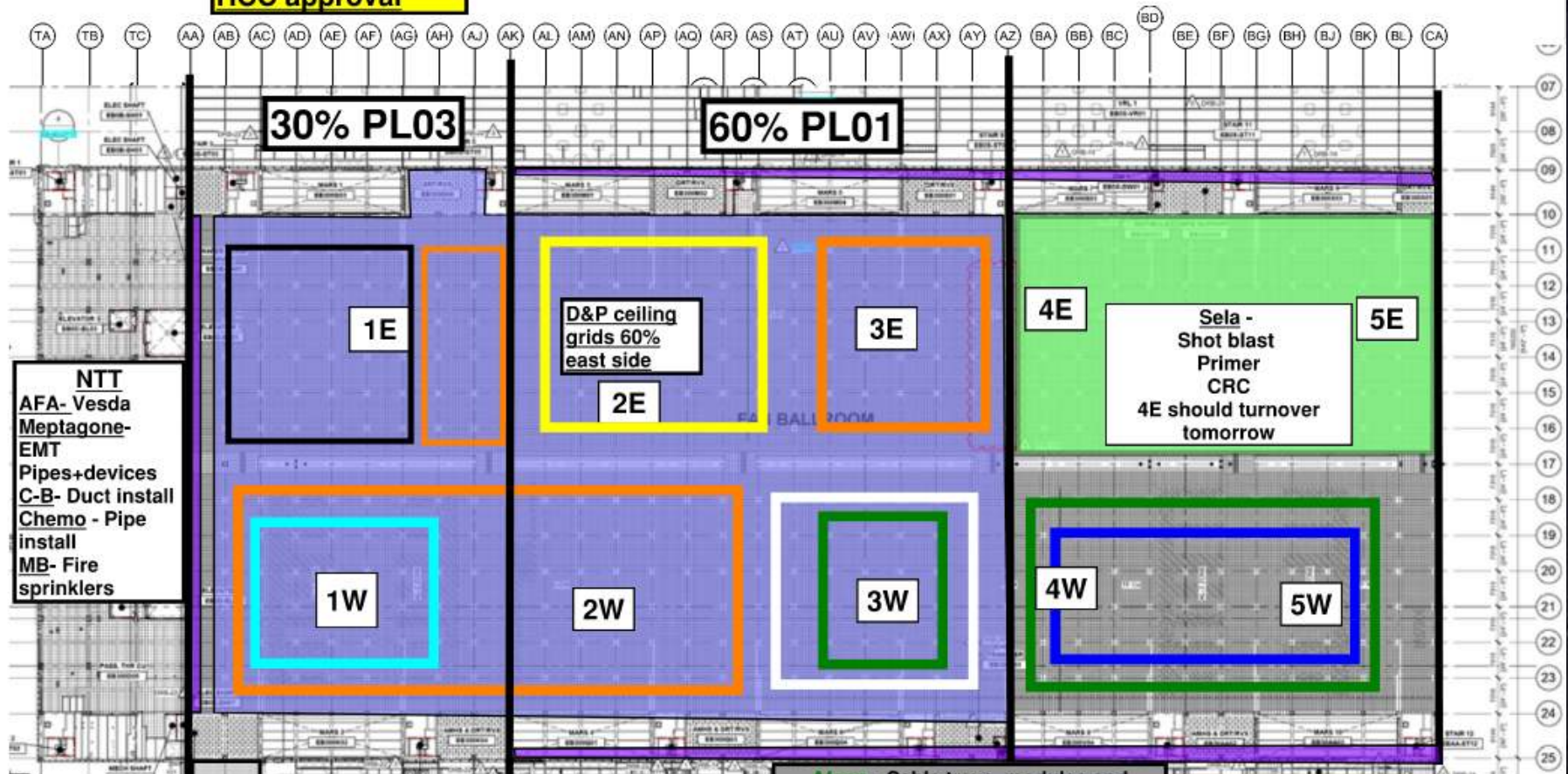


CRC Damage





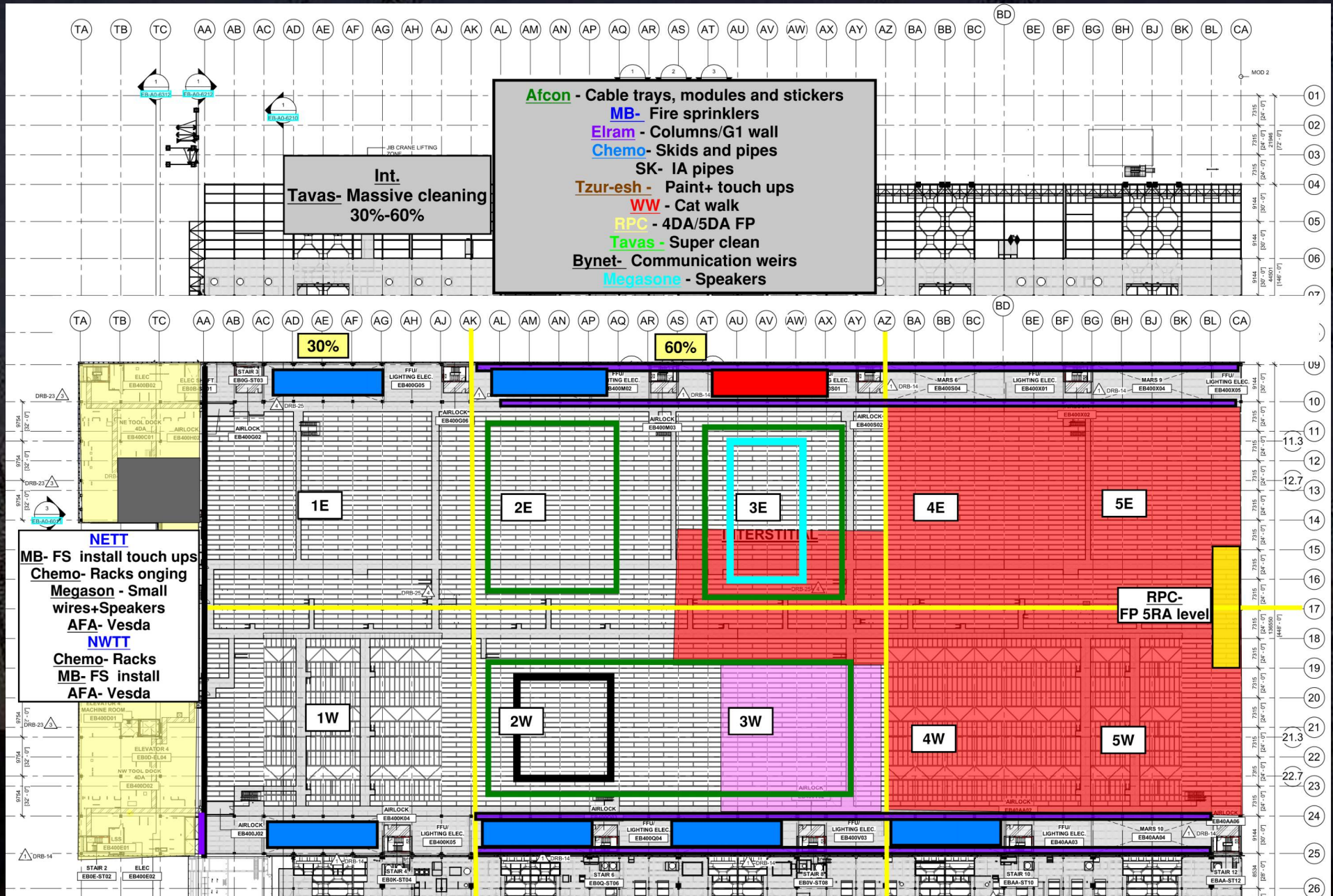
No one is allowed to walk/work on the ceiling without HCC approval

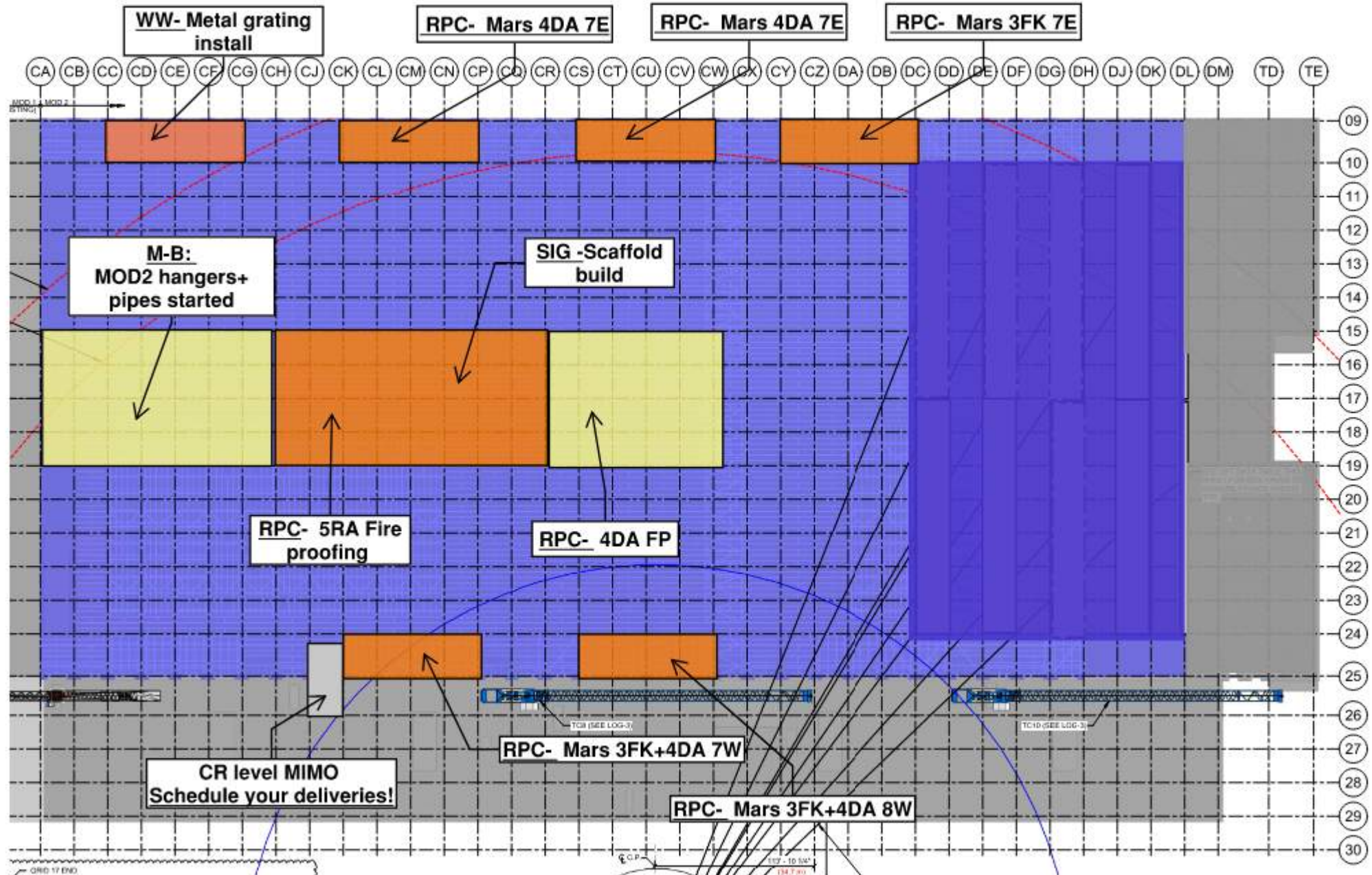


NTT
AFA- Vesda
Meptagone-
EMT
Pipes+devices
C-B- Duct install
Chemo - Pipe
install
MB- Fire
sprinklers

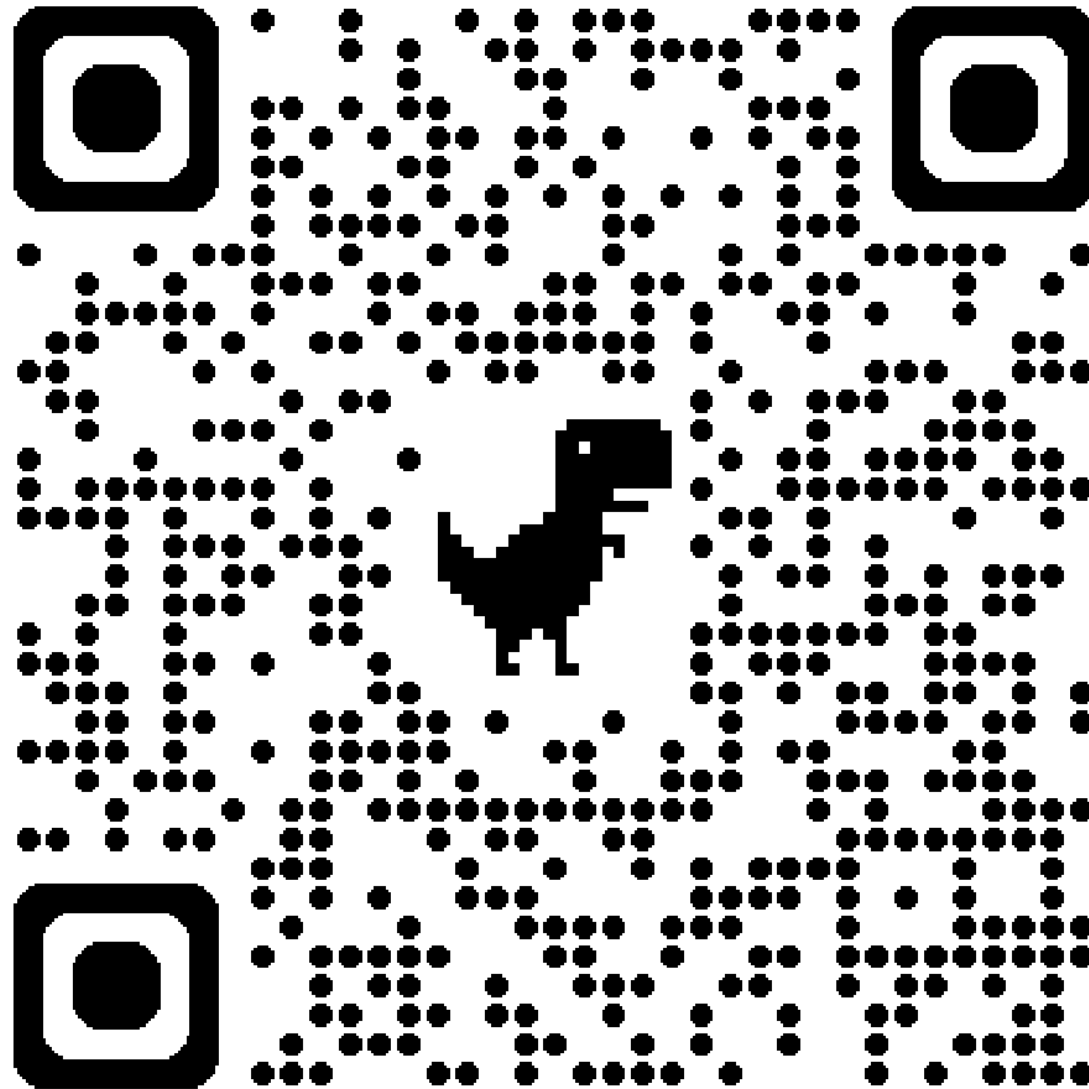
Link
SIG- Scaffold tomorrow will be moved
all materials/ladders needs to be cleared
P-T - Duct dismantle needs to be done
MB- FS ongoing
D&P- Scaffold will move for blades drilling
Sela- Waiting for QC

Afcon - Cable trays, modules and stickers
MB- Pipes and drops
Eiram - Columns/shaft walls/G1 wall
Meptagon - I&C+ Zero ref. pipes
D&P - Stick build+ separation walls+FFU
Tzur-esh - 1W blade paint
HYG - Stairs 7.3 starts WW04
Tape - UPN install, ceiling grid, lids removal
Tape - Super clean
Taper-Tech - RMF
Bynet - Small wiers

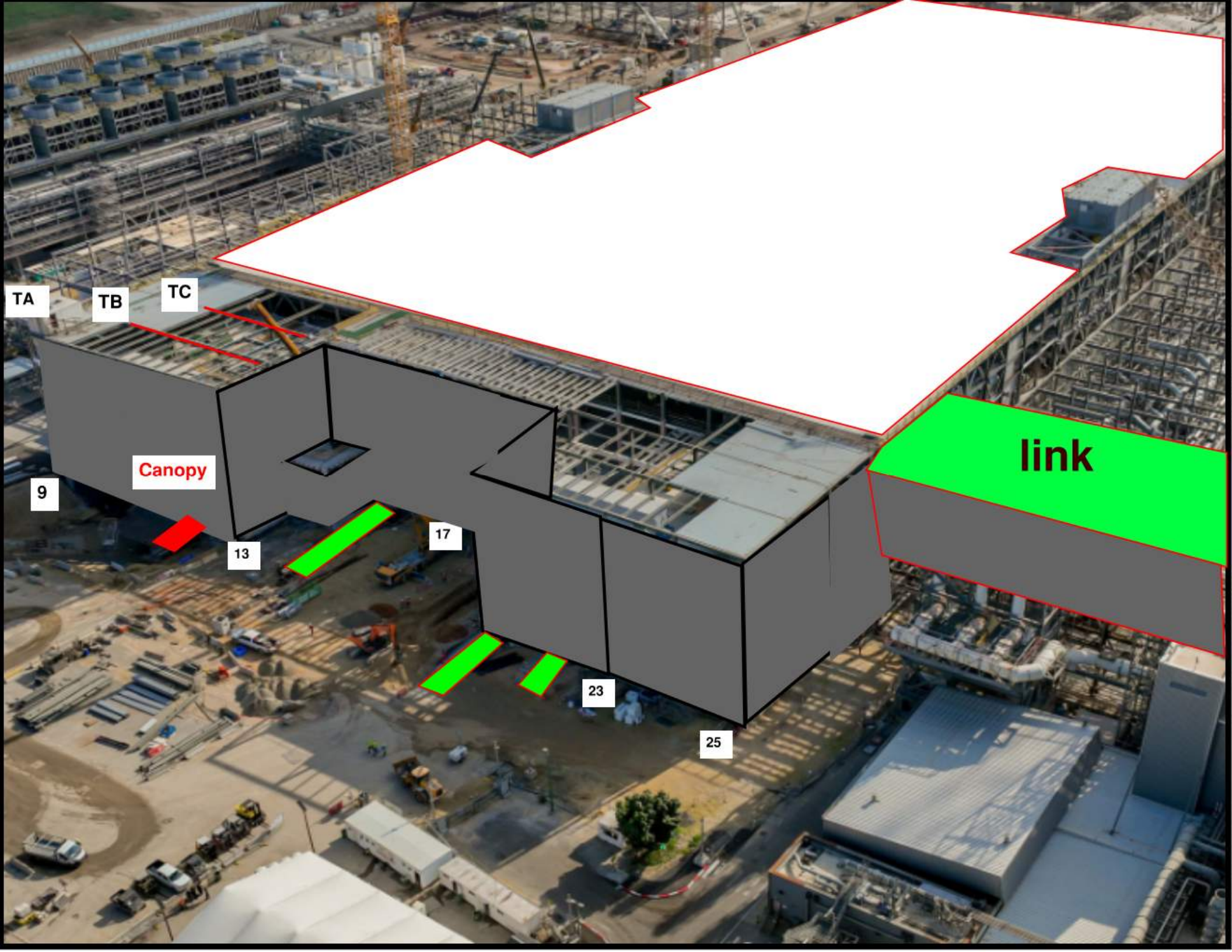




Siding Penetration Request Form



Subcontractor must fill out and submit all required cells in order to get a penetration cut through the siding.



TA

TB

TC

Canopy

9

13

17

23

25

link



MOD 2 EASTSIDE GIRTS/SIDING

2752/ 2751	2742/ 2741	2732/ 2731	2722/ 2721	2712/ 2711	2552/ 2551	2542/ 2541	2532/ 2531	2522/ 2521	2512/ 2511	2502/ 2501

READY FOR GIRTS	
INSTALLING GIRTS	
READY FOR PANELS	
PANELS INSTALLED	

MOD 2 WESTSIDE GIRTS/SIDING

READY FOR GIRTS 

INSTALLING GIRTS 

READY FOR PANELS 

PANELS INSTALLED 

2602/
2601

M
I
M
O

2612/
2611

MIMO
2622/
2621

2632/
2631

2642/
2641

2652/
2651

2812/
2811

2822/
2821

2832/
2831

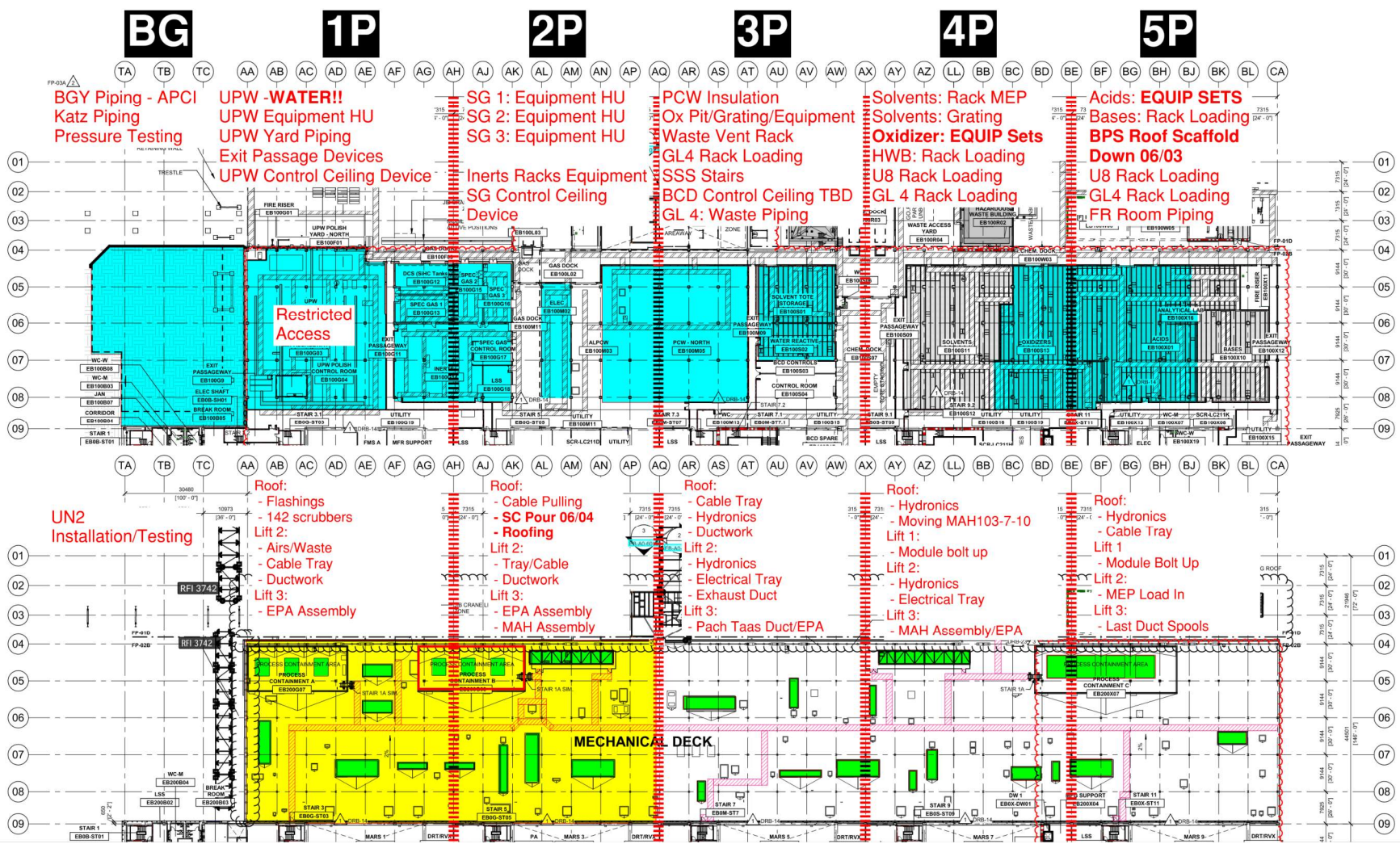
2842/
2841

2852/
2851

PSSS.1

Utility Level
1YA

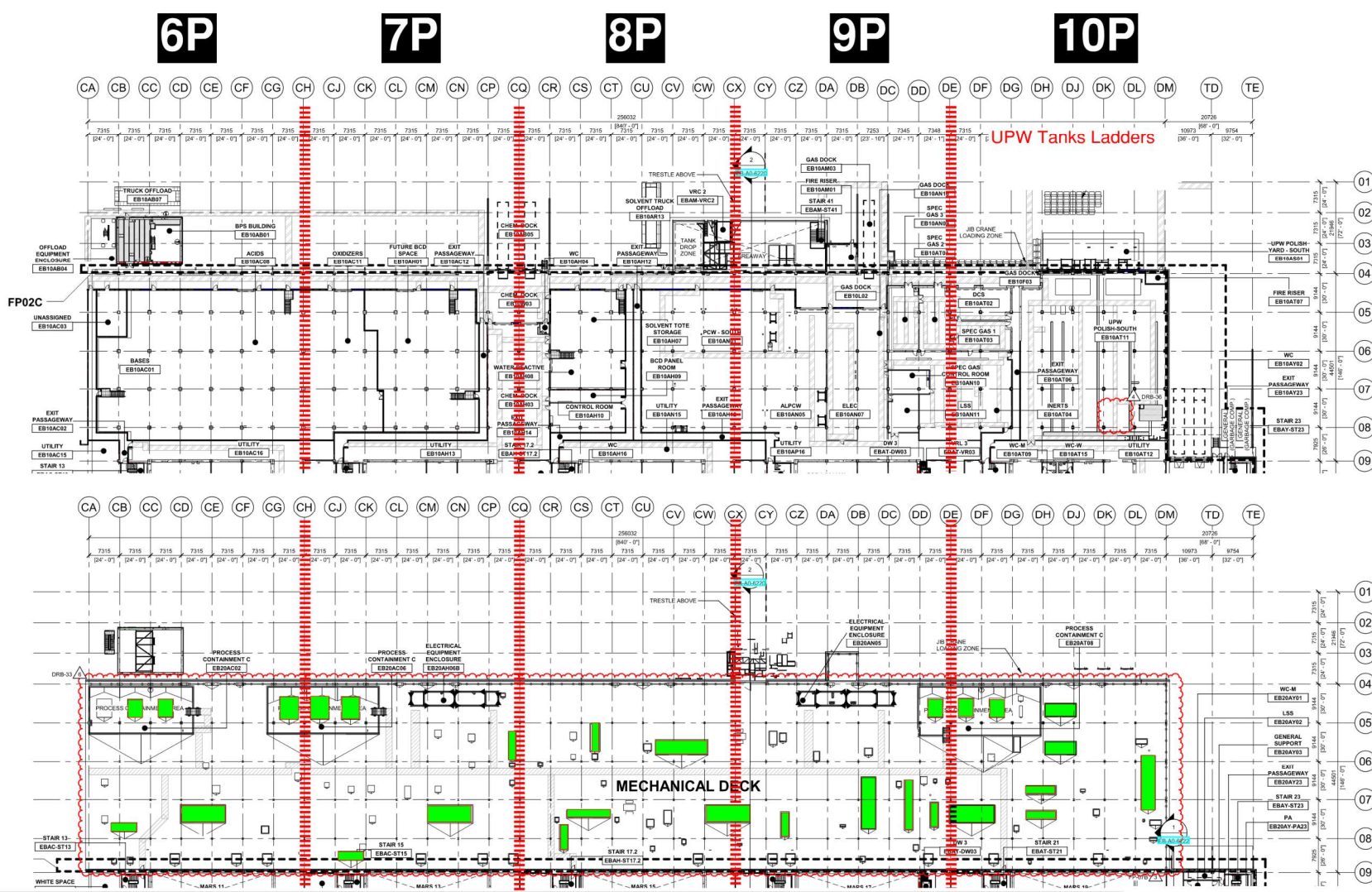
PSSS Roof
2SA



PSSS.2

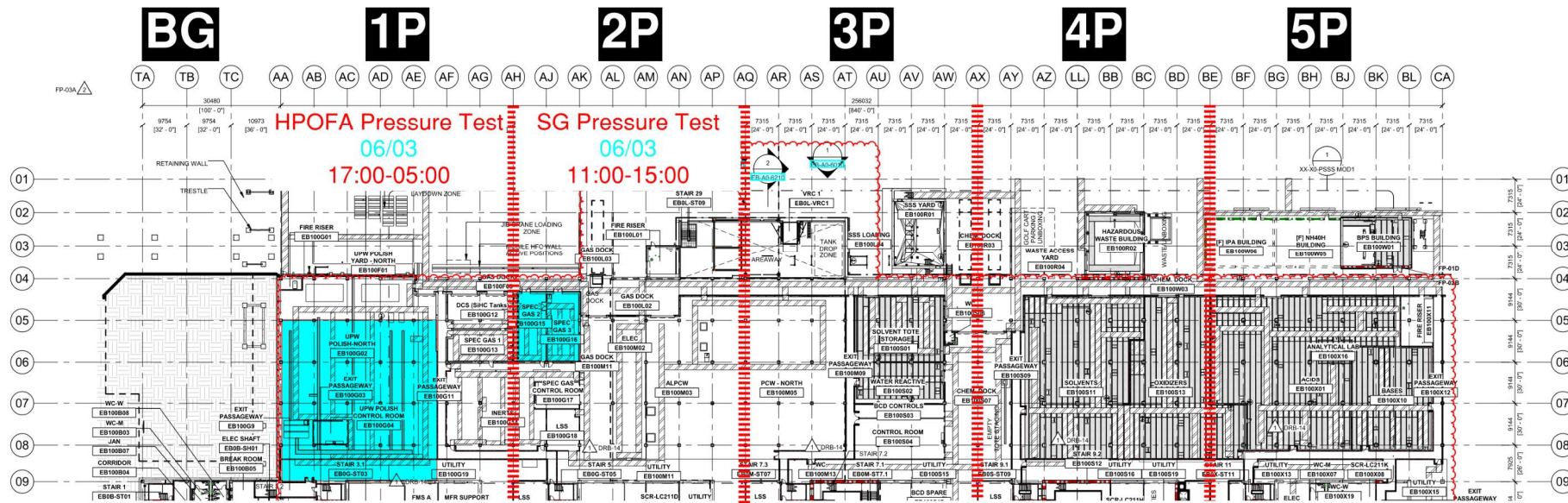
Utility Level
1YA

PSSS Roof
2SA

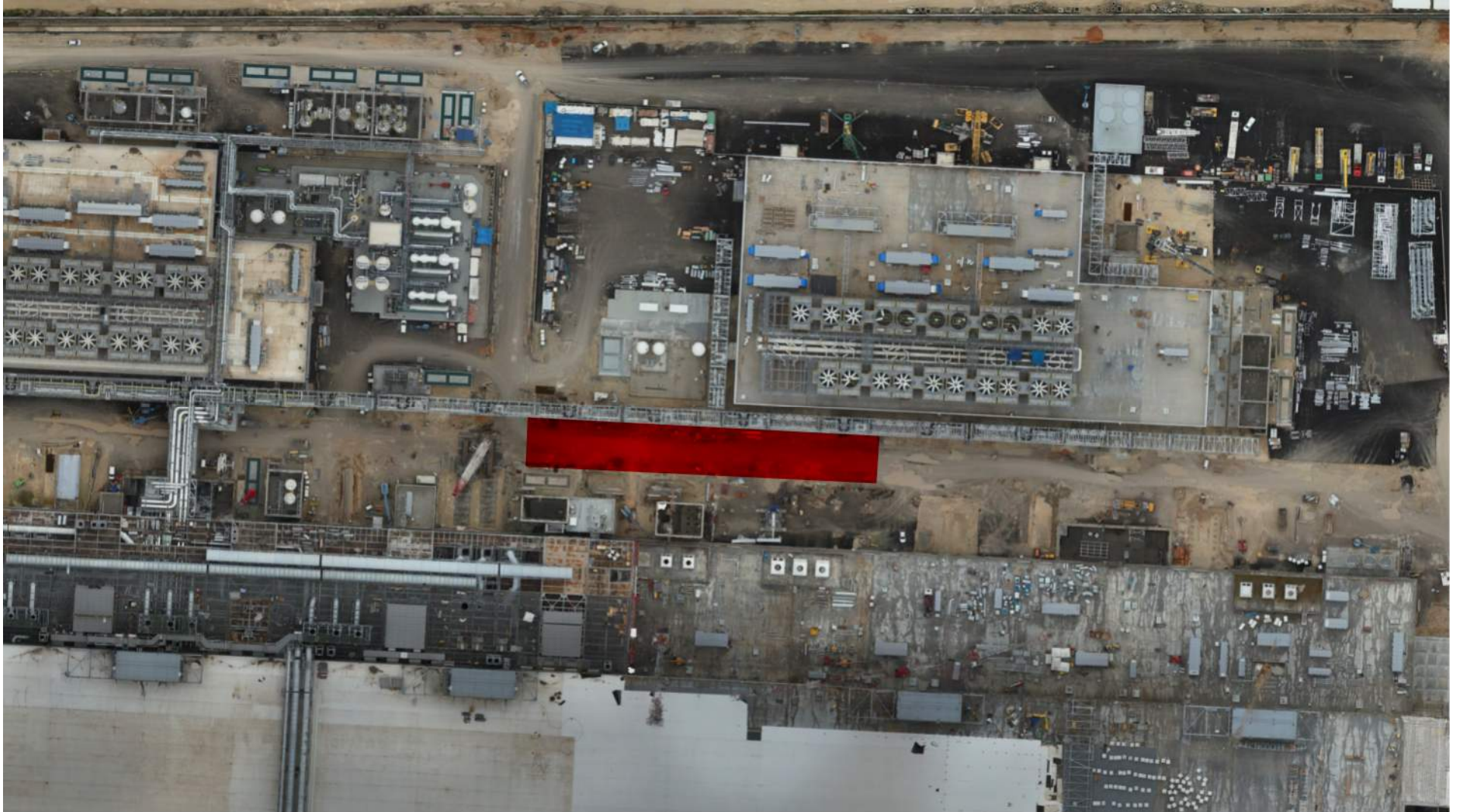


PSSS Pressure Testing

Utility Level
1YA



3800 Dismantle WW10



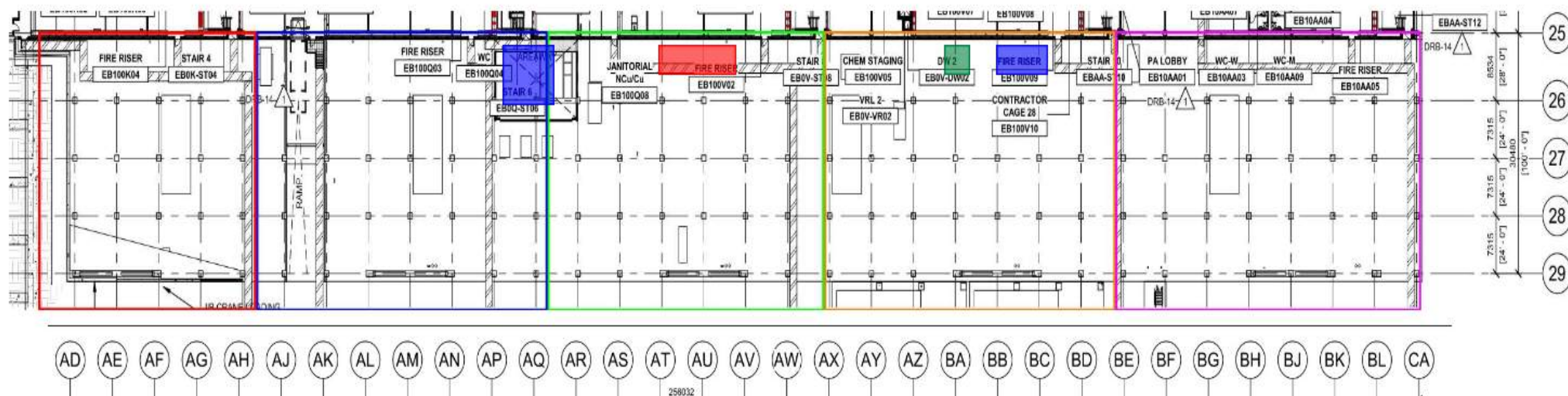
BGY Closed WW11 For UN2 Blowdown



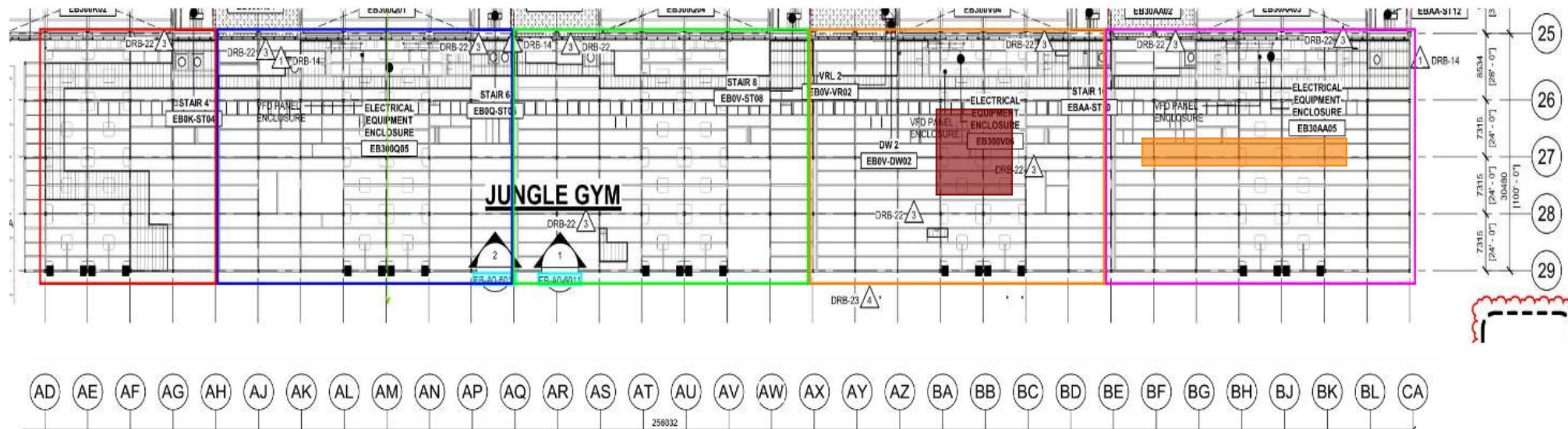
*Pach Taas - installation of modules in west SUT.

* Pach Taas - WP are all installed.
sealing and bolting

- * SK - installation of 3" cooper pipe
- * W&W - welding of shims for outriggers



		* Pach Taas - finishing installation of 1800 mm module and steel frames and connection to single stack	* Carmel Bidud - dismantling MAH scaffold	* Chemo Aharon - finishing Insulation
--	--	--	---	---------------------------------------



W&W - welding supports for gratings

* Chemo - finalizing MARS pipes

* Pach Taas - installation of single stack BG line and MAH hoods



Crane logistics

Truck crane
located on AH for today
and according to
subcontractors needs

Crane: 500 ton crane
located at AQ. leaving
end of day 04/03/25

Crane: 750 ton crane
located at AV-AW.

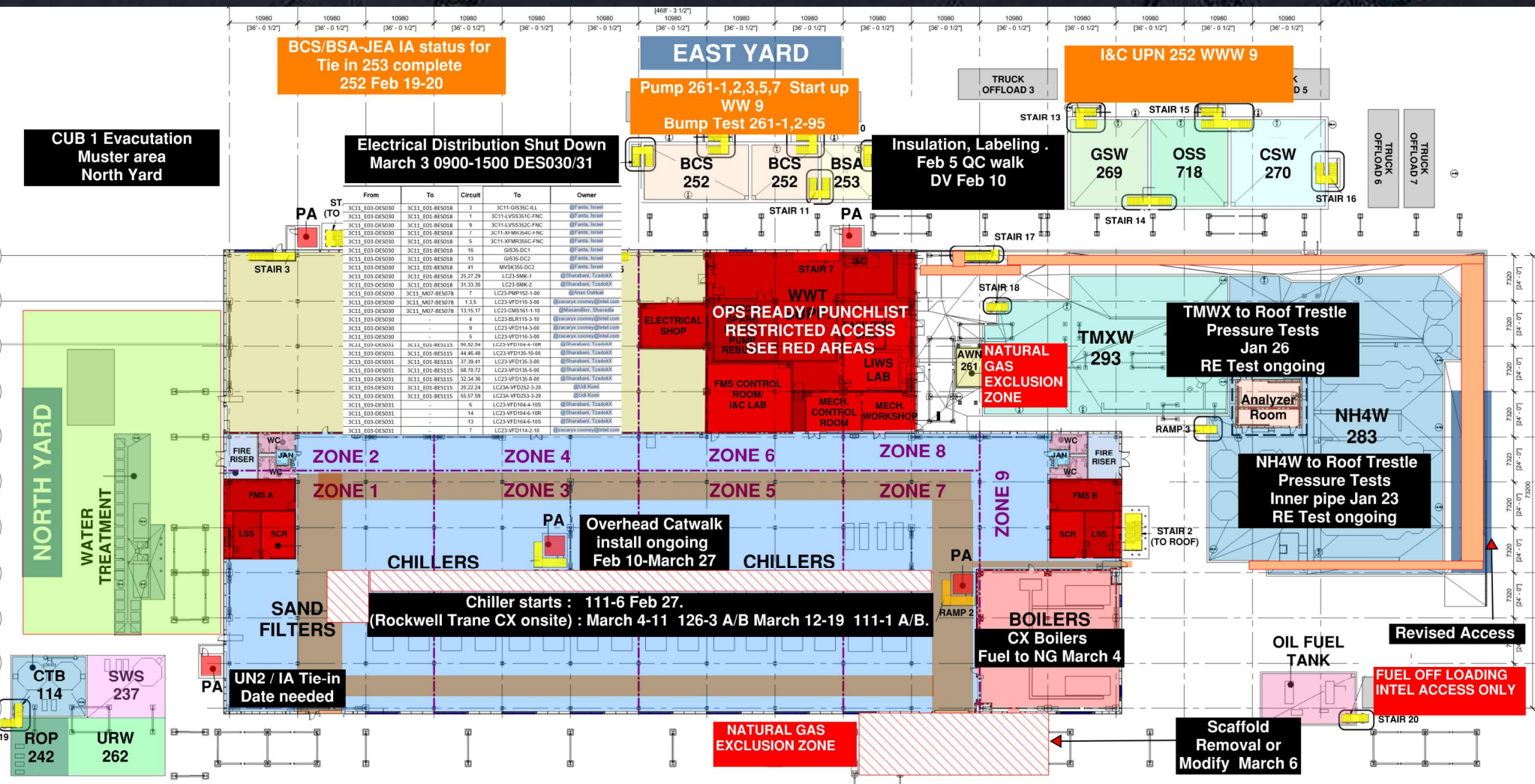
Crane: 650 ton crane
location: BE-BK on west
road. leaving on end of
day 04/03/25 after
installation of MAH
hoods and single stack.



small crane truck will
clear out by end of
day

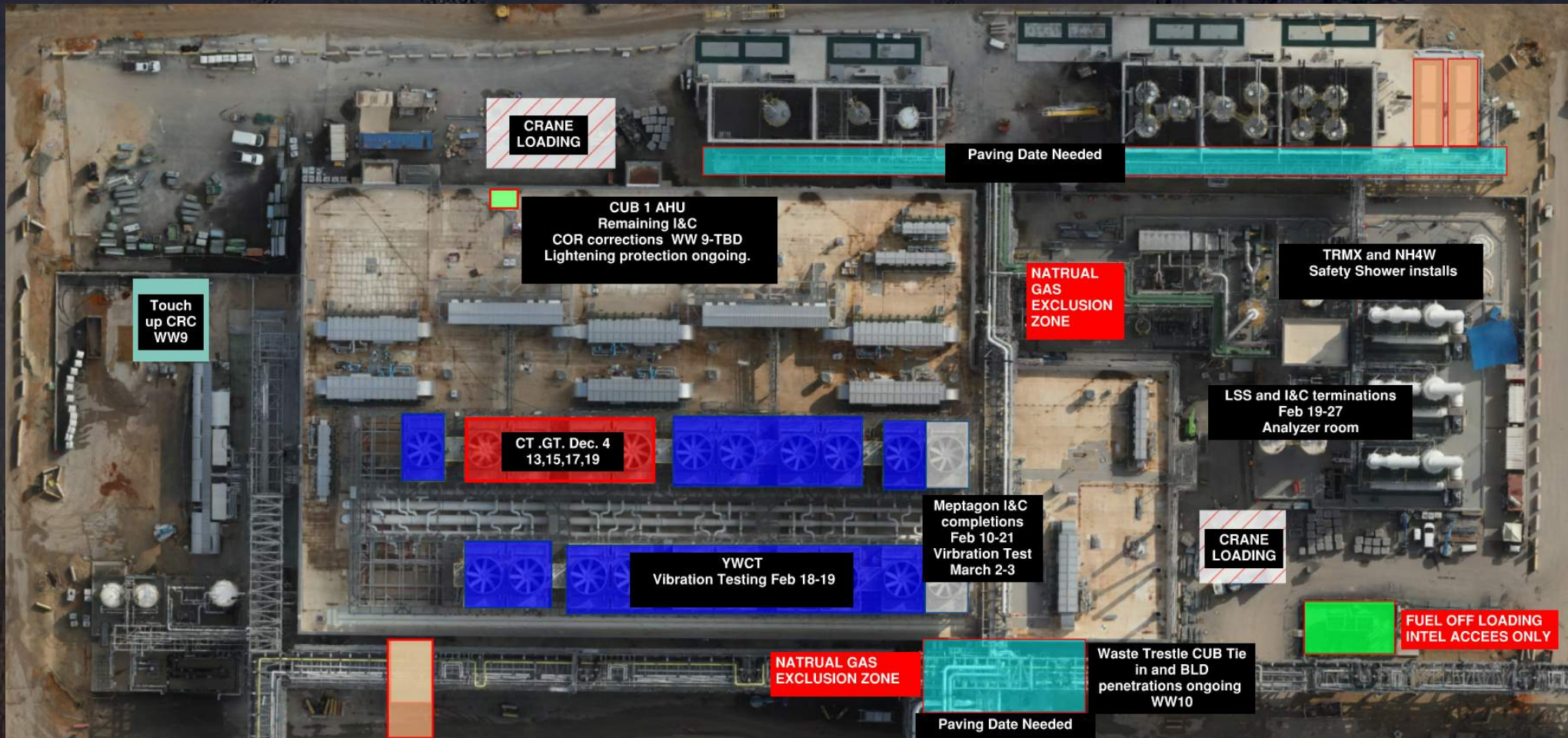


CUB 1

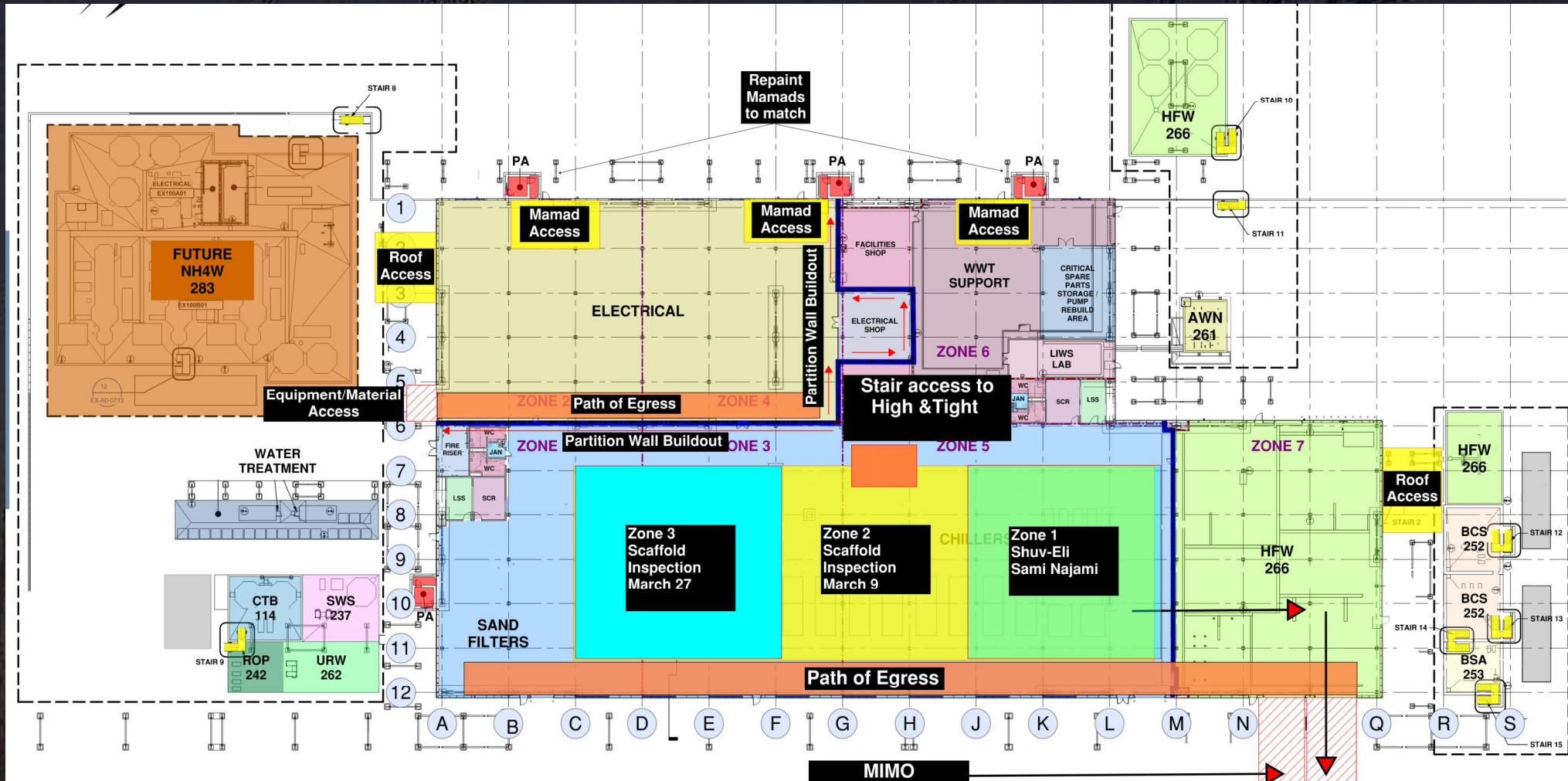


- Waste Systems Pressure Testing Wrap up 3d March 4-5
- Trestle Scaffold removal 5d March 6-11
- Metal flashings and Panel work Man Door 5-7d March 12-20
- Claim Envelope ready for DVs March 20
- DV acceptance list and corrections 7d April 2
- Ops Ready April 3
- Concrete removal Site Grading Form rebar pour concrete 5-7 d March 23-March 31
- Bullards 2d April 1-2

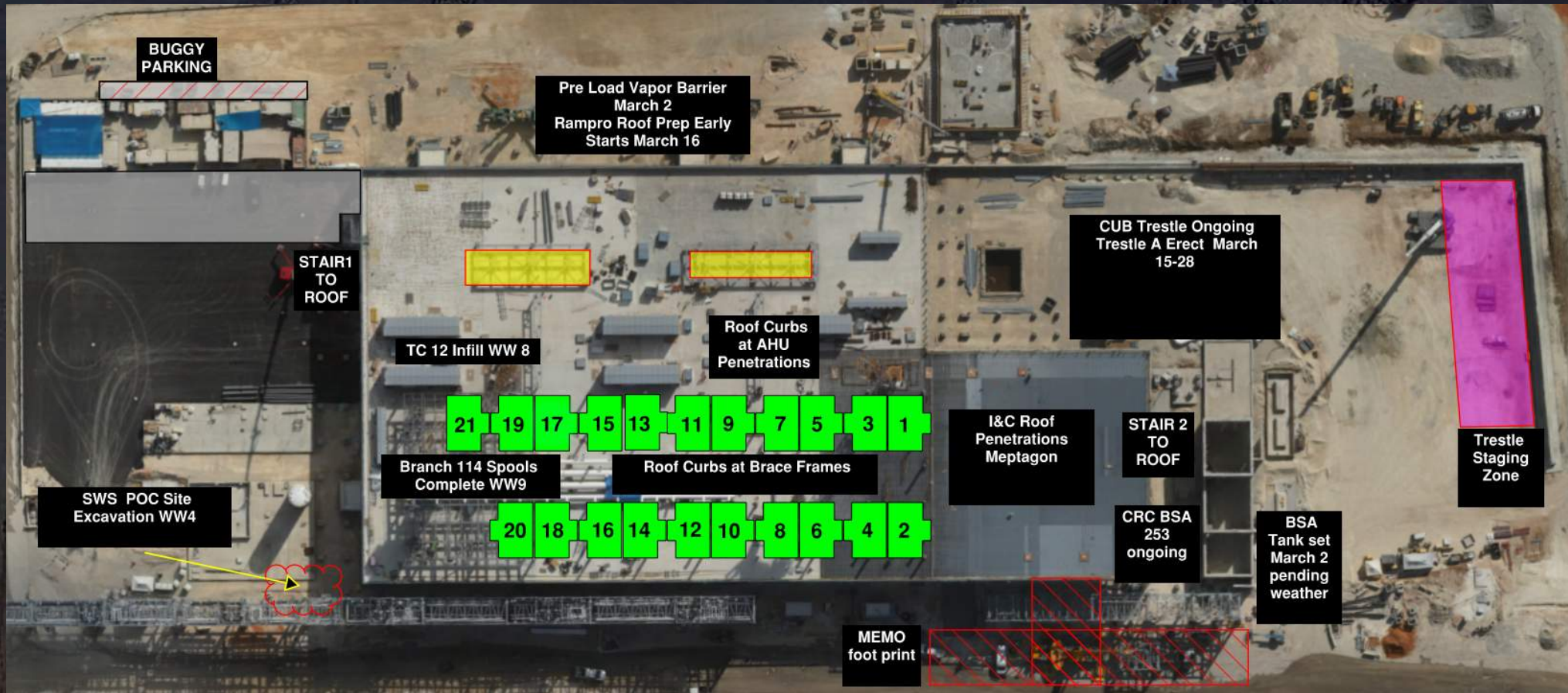
CUB 1 – EXTERIOR/ROOF

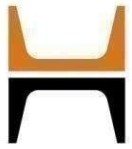


CUB 2- Load in ,H&T, Framing and Sheetrock

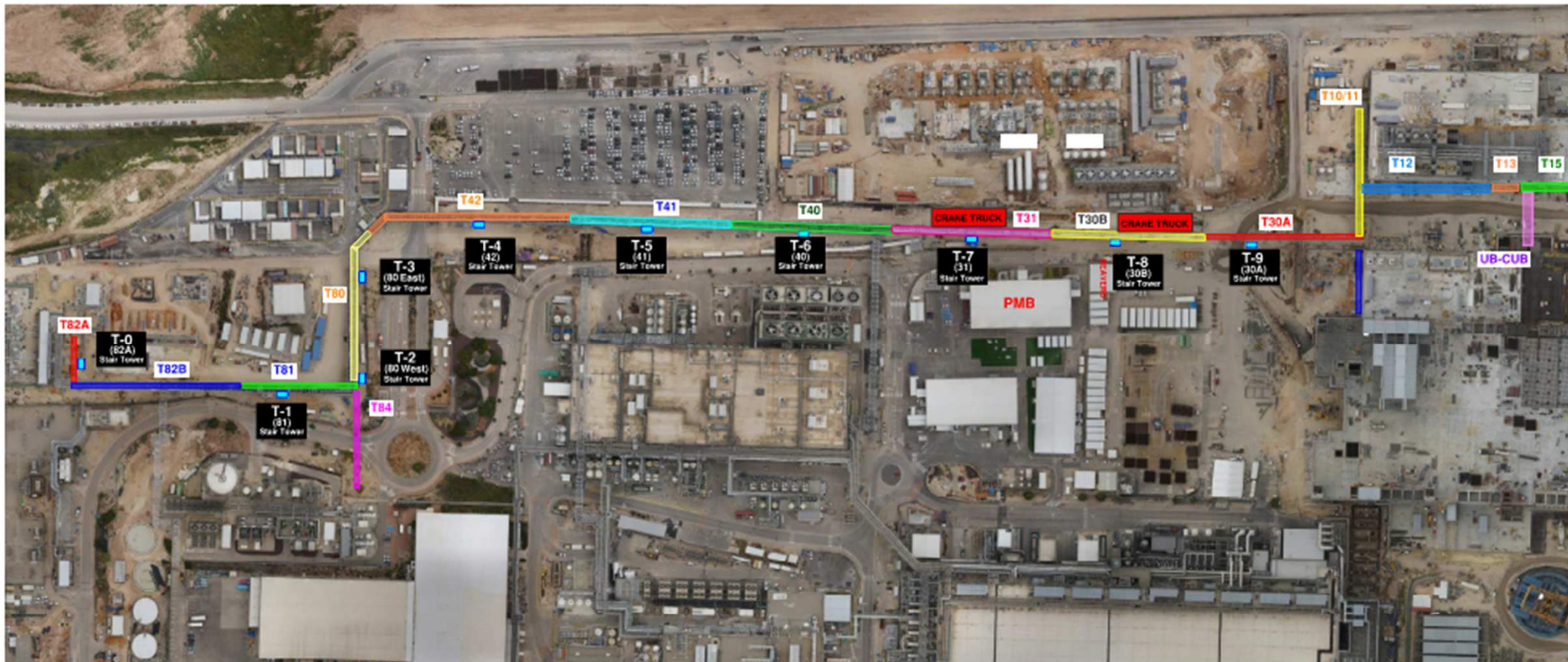


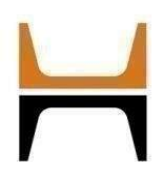
CUB 2 – EXTERIOR/ROOF





HOFFMAN CONSTRUCTION COMPANY





SAMI NAJAMI - RT - RADIOGRAPHY AREA PLAN:

TRESTLE: T-12 – UN2 \ T-30A – H2VENT

SNJ – NDT:

UN2 – 6"

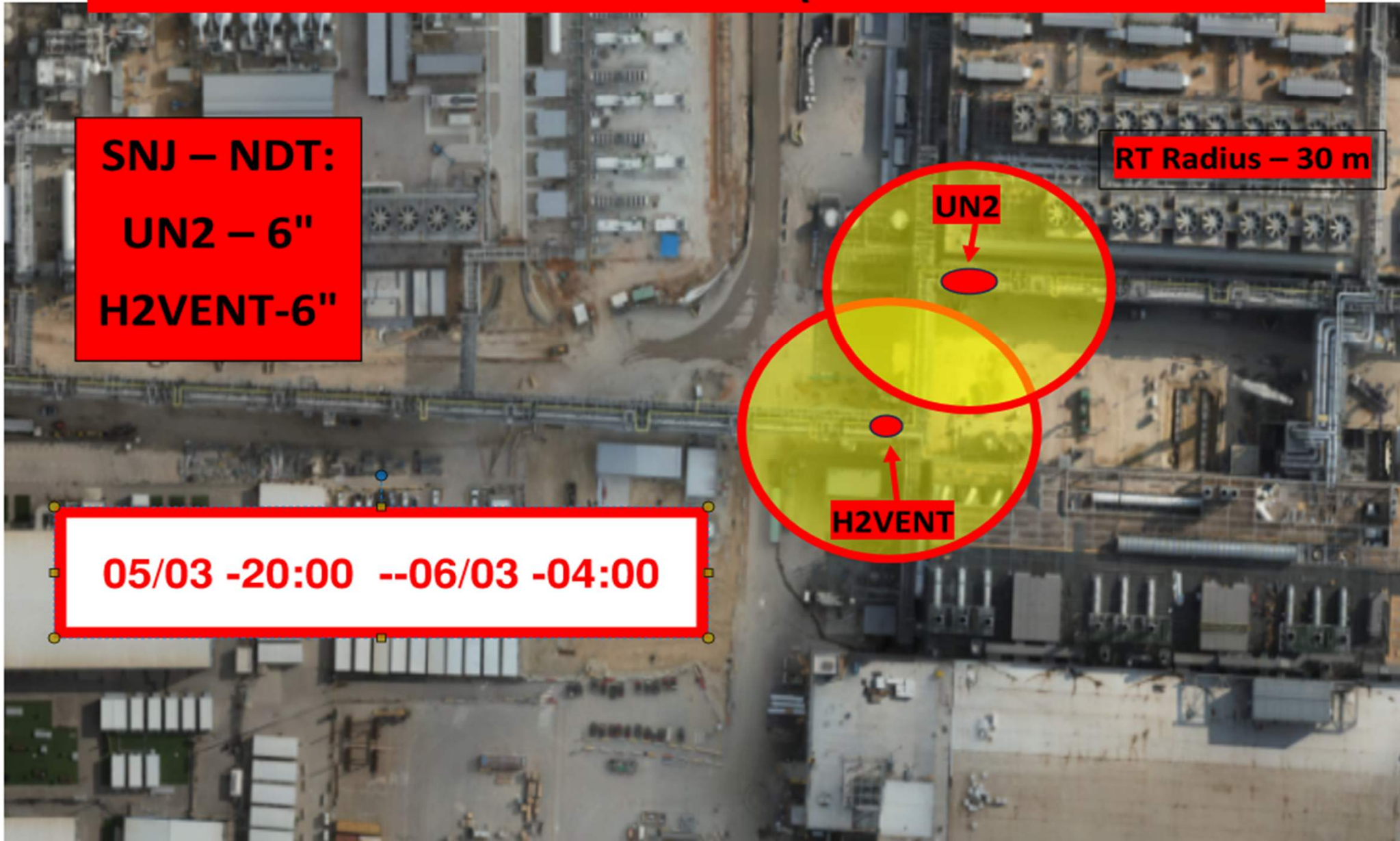
H2VENT-6"

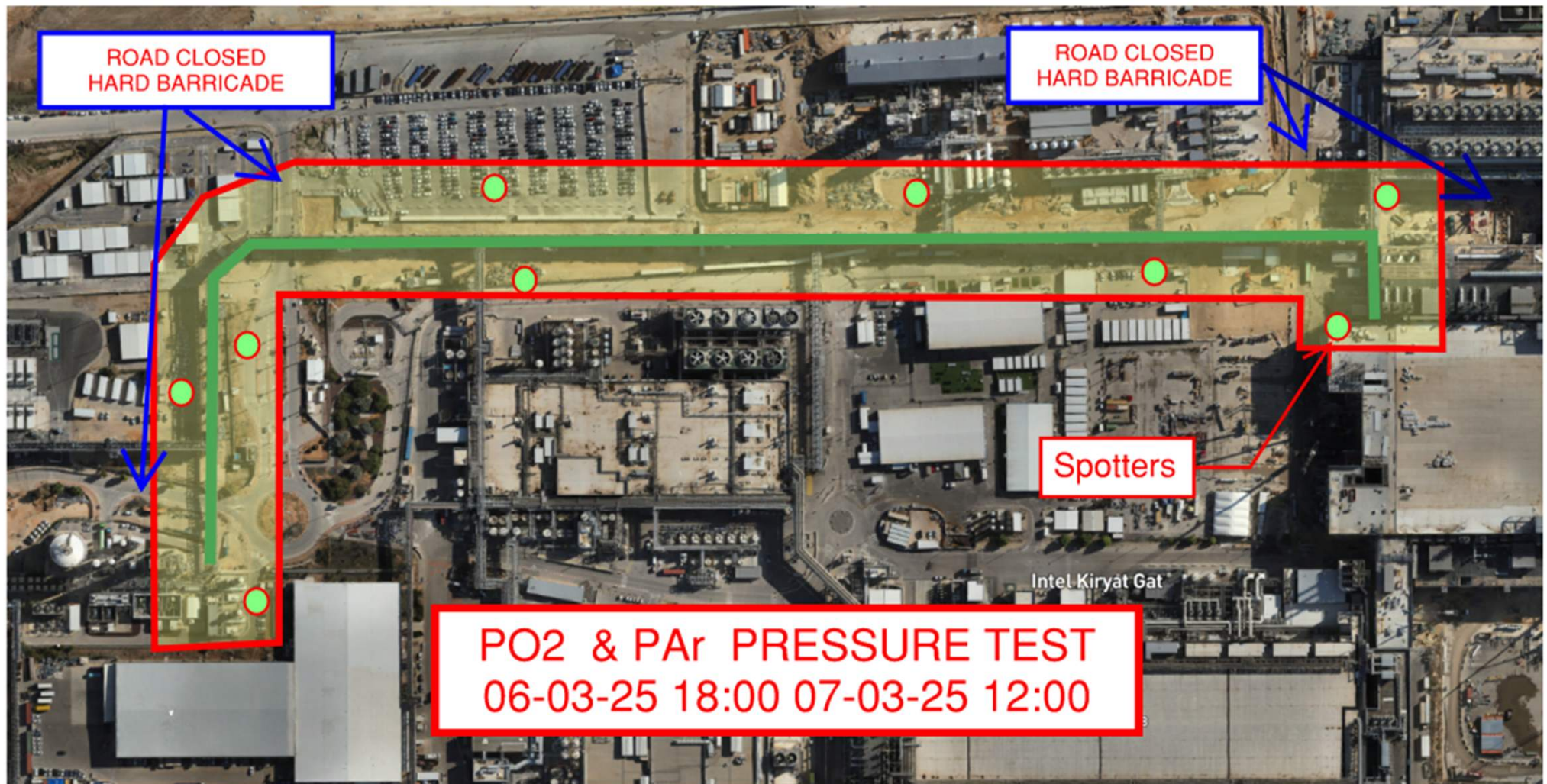
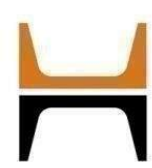
RT Radius – 30 m

UN2

H2VENT

05/03 -20:00 --06/03 -04:00





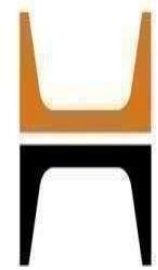
EXCLUSION ZONE FOLLOWING ASME PCC-2 APPENDIX 501-II AND 501-III



PO2 & PAr LINES UNDER TEST



SPOTTERS



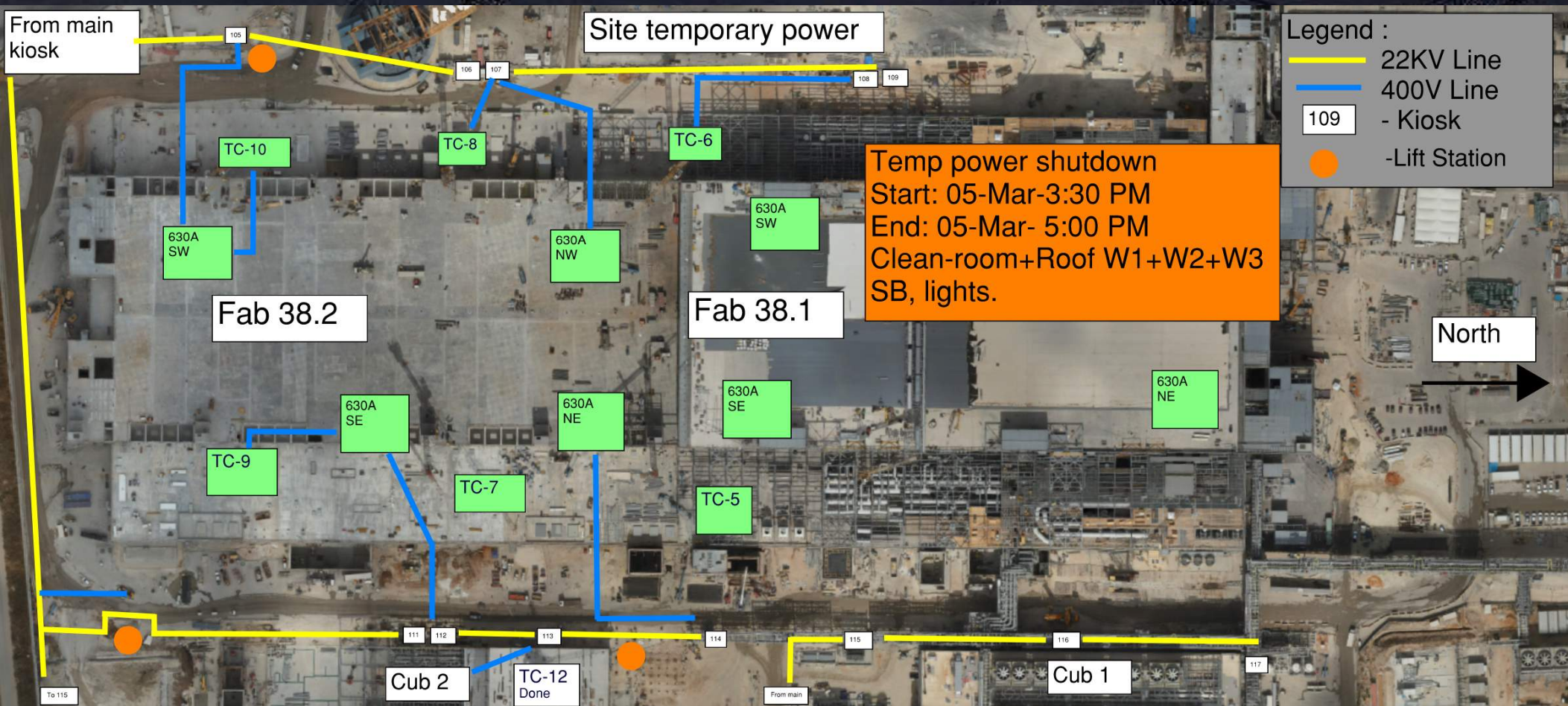
HOFFMAN CONSTRUCTION COMPANY



HOFFMAN
Sparrow  

INTEL- blue fence

OFA PRESSURE TEST
06-03-25 18:00 07-03-25 12:00





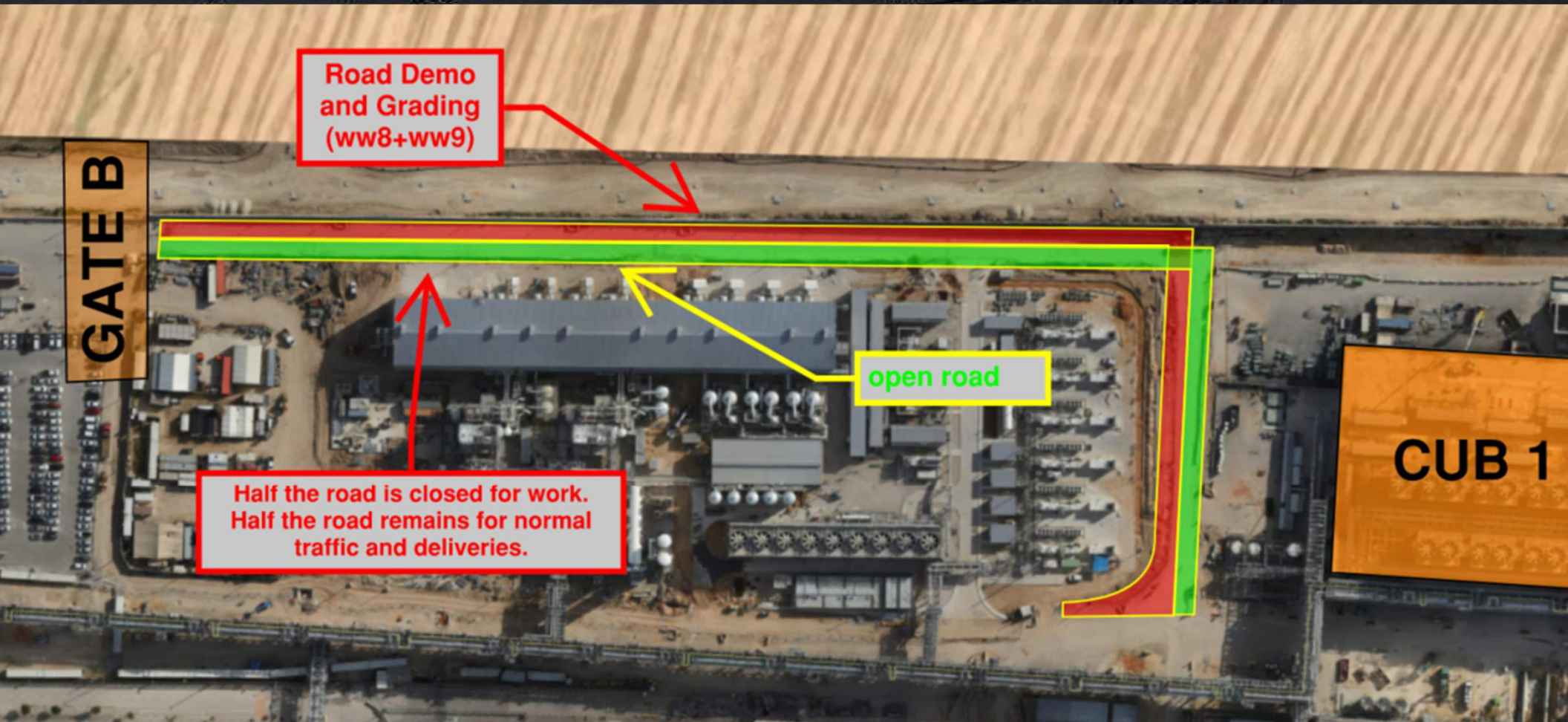
HOFFMAN CONSTRUCTION COMPANY



Daily Coordination Meeting

Site Logistics

North





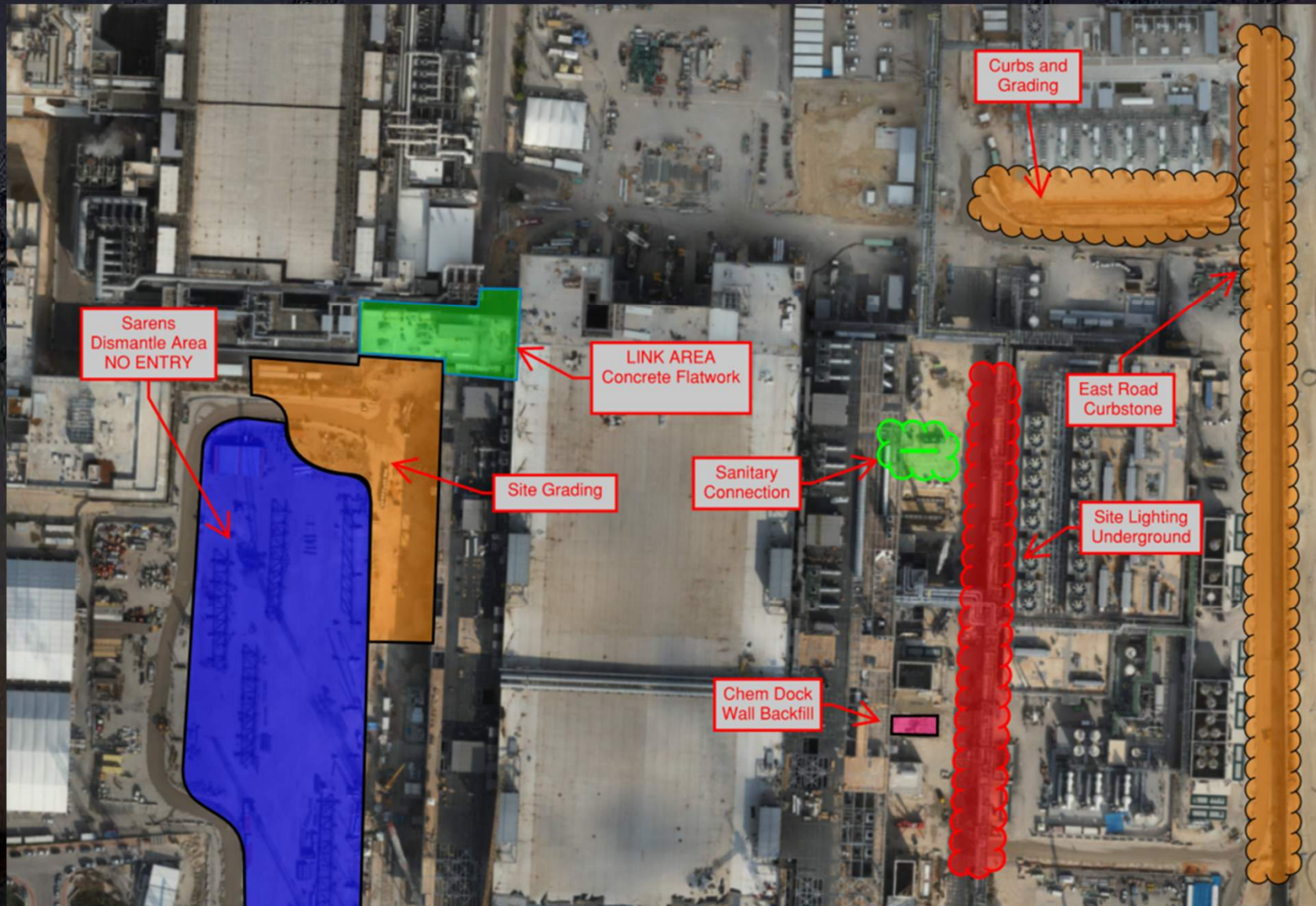
HOFFMAN CONSTRUCTION COMPANY



Daily Coordination Meeting

Site Logistics

North





Daily Coordination Meeting

Site Logistics

South





Rainy and Stormy Weather

- We are expecting several days of rain of higher-than-usual amounts according to the forecast. Here are some things to remember **before** the rain and winds begin:
- Conduct a physical inspection of all existing equipment in the area, including storage cabinets, boxes, carts, etc.
- Lock all wheels with their designated brakes.
- Pay attention to and secure anything that could be blown away by the wind
- Check to ensure no equipment has been left behind especially in areas like the roof or around the trestle.
- Of course, talk with the workers and communicate the expected forecast.

Daily Coordination Meeting



14:00 Sign In