

Daily Coordination Meeting

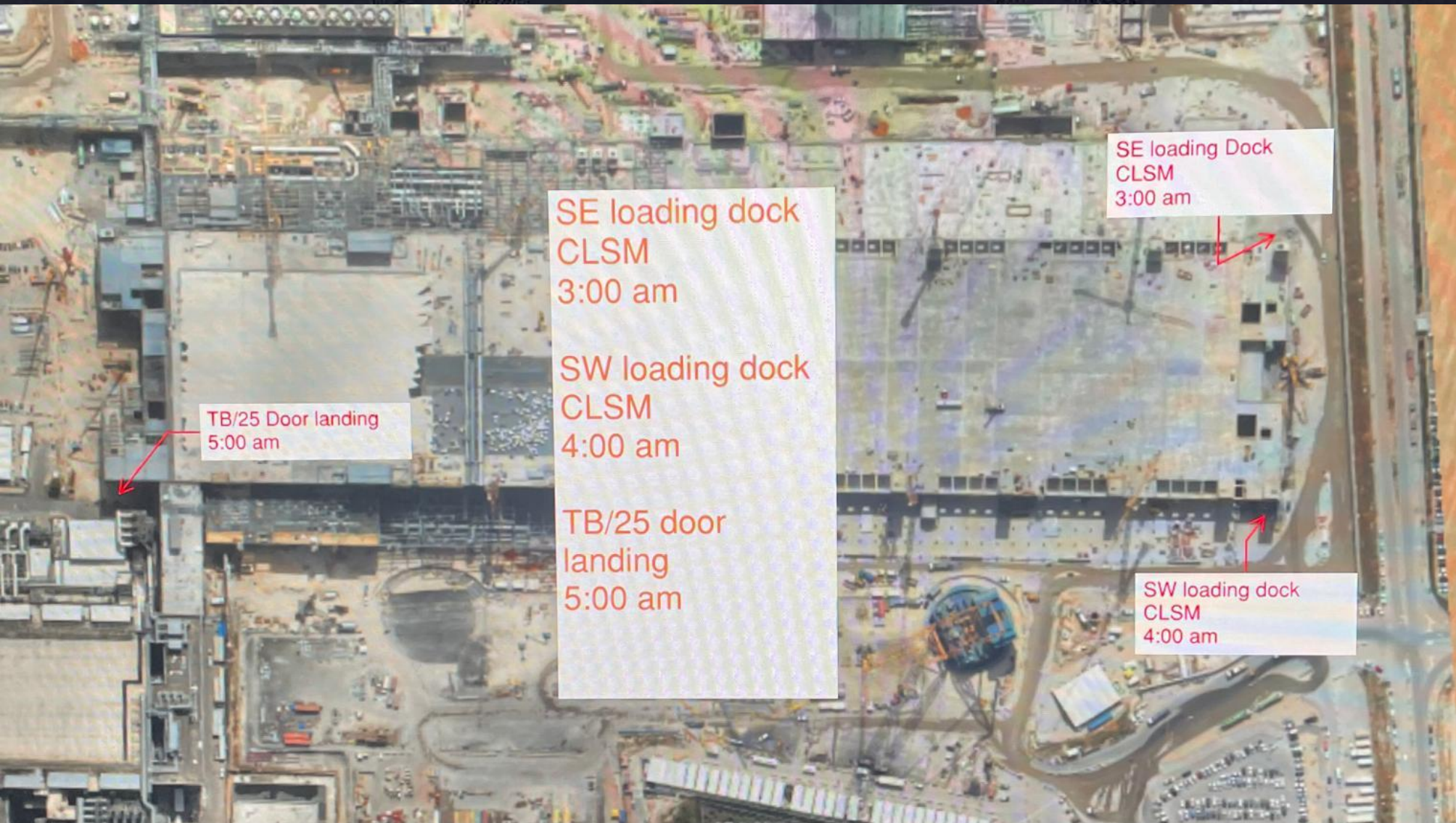


14:00 Sign In

Daily Coordination Meeting

General Topics:

- * Stop and think- line of fire
- * Site Closed at 23:59 Thursday Night
- * Site Closed Friday 28 November
- * Site Closed Friday 27 December



TB/25 Door landing
5:00 am

SE loading dock
CLSM
3:00 am

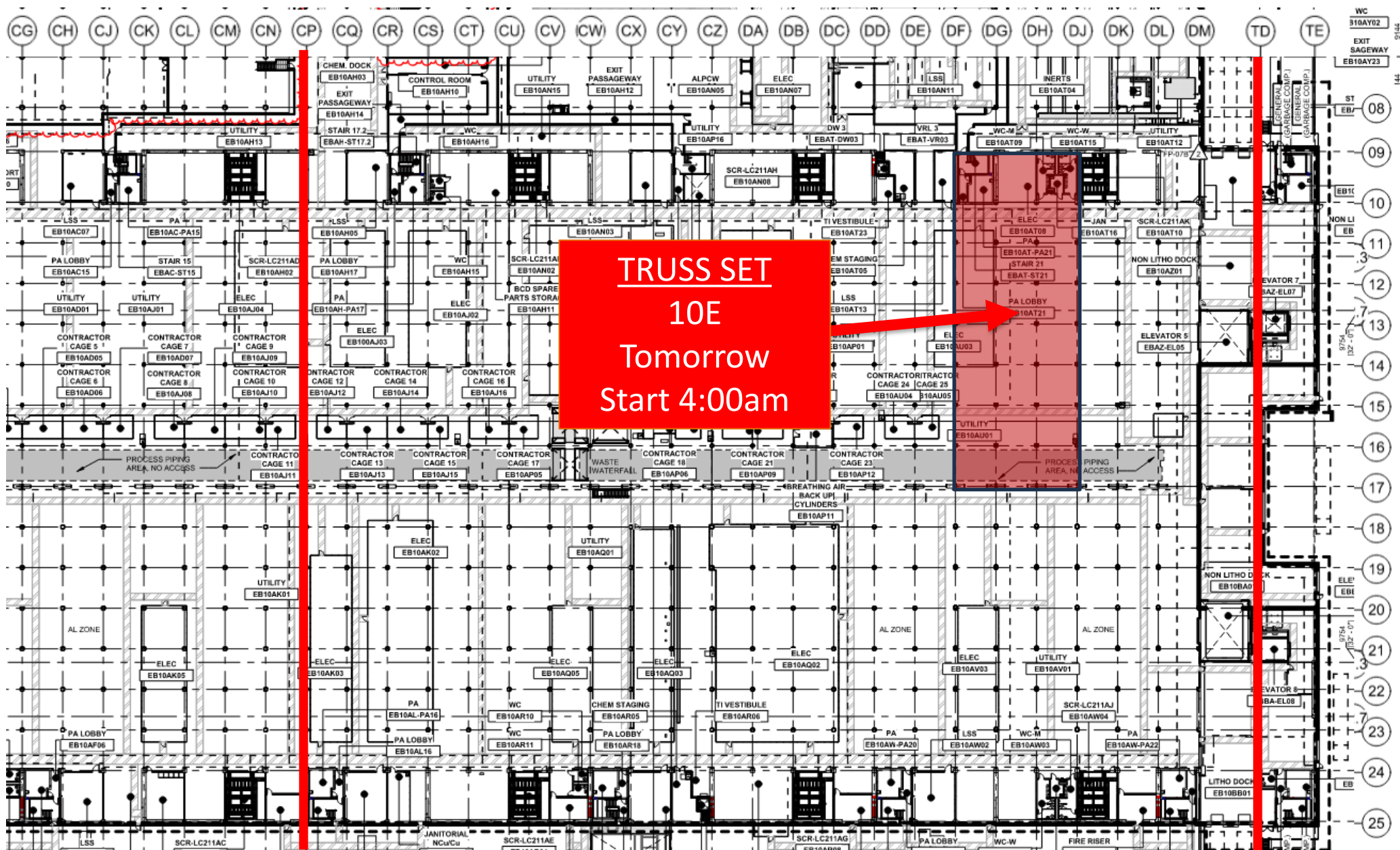
SW loading dock
CLSM
4:00 am

TB/25 door
landing
5:00 am

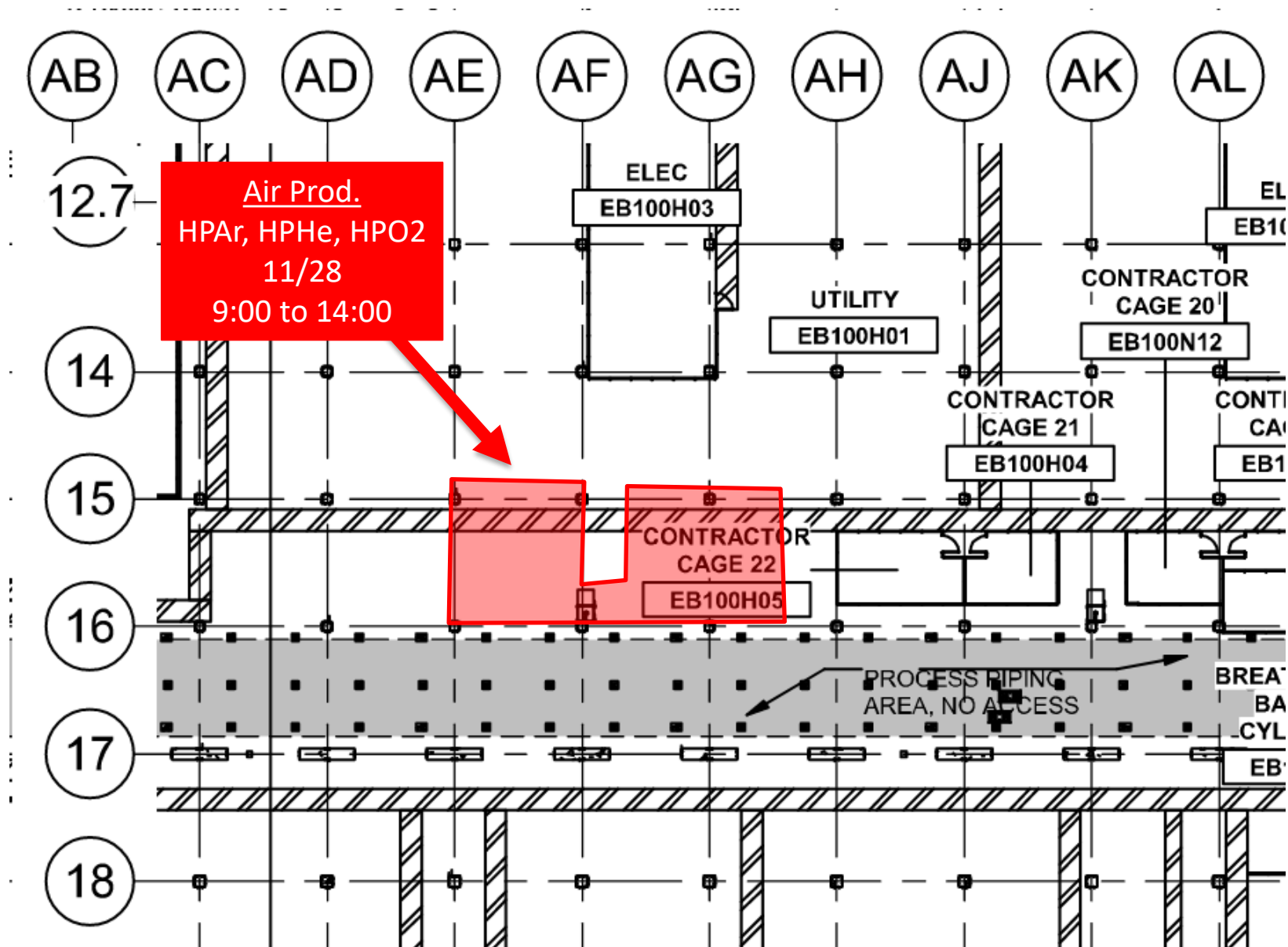
SE loading Dock
CLSM
3:00 am

SW loading dock
CLSM
4:00 am

UTILITY LEVEL TRUSS

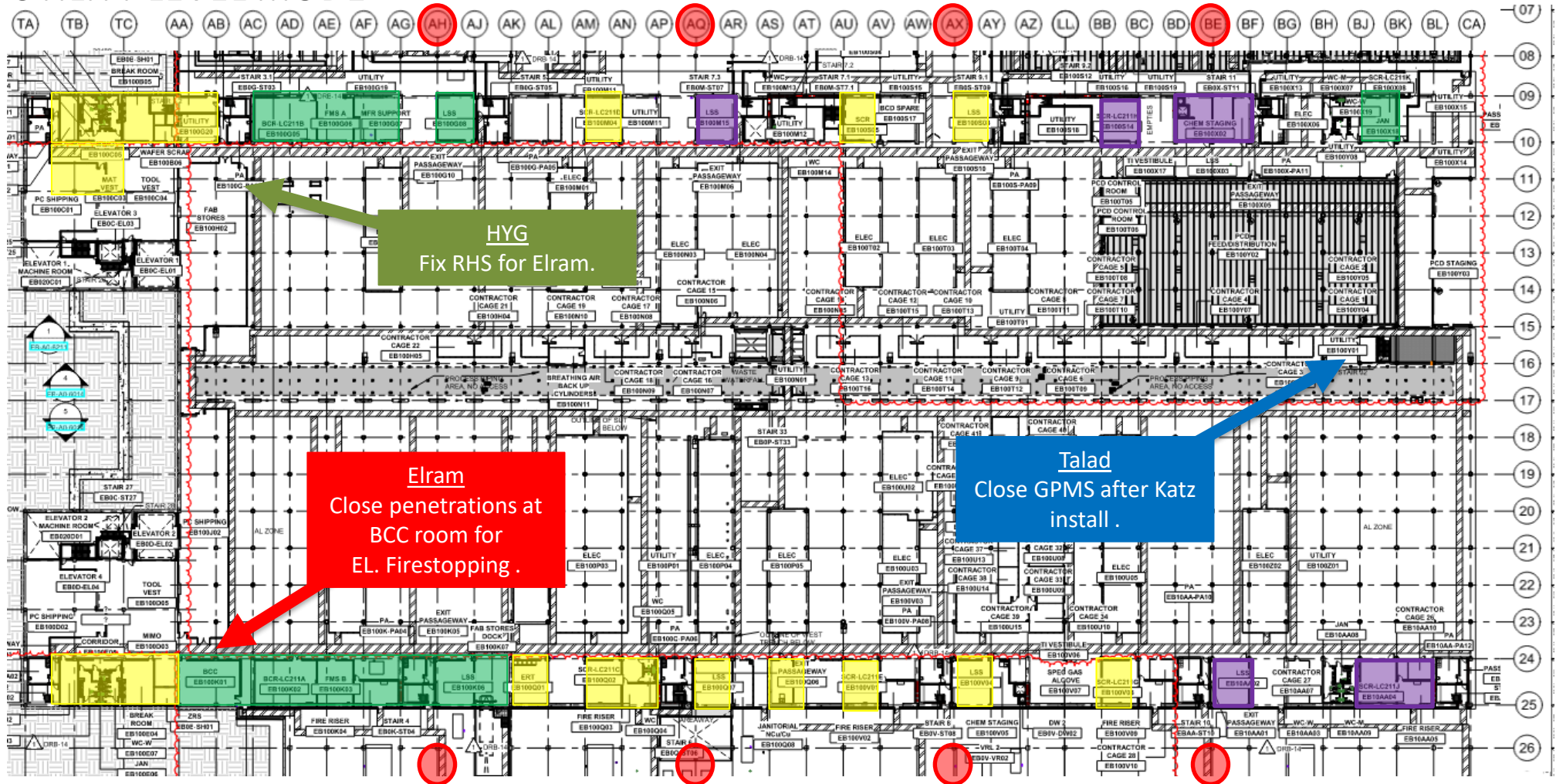


UTILITY LEVEL PRESS T.





UTILITY LEVEL MOD1



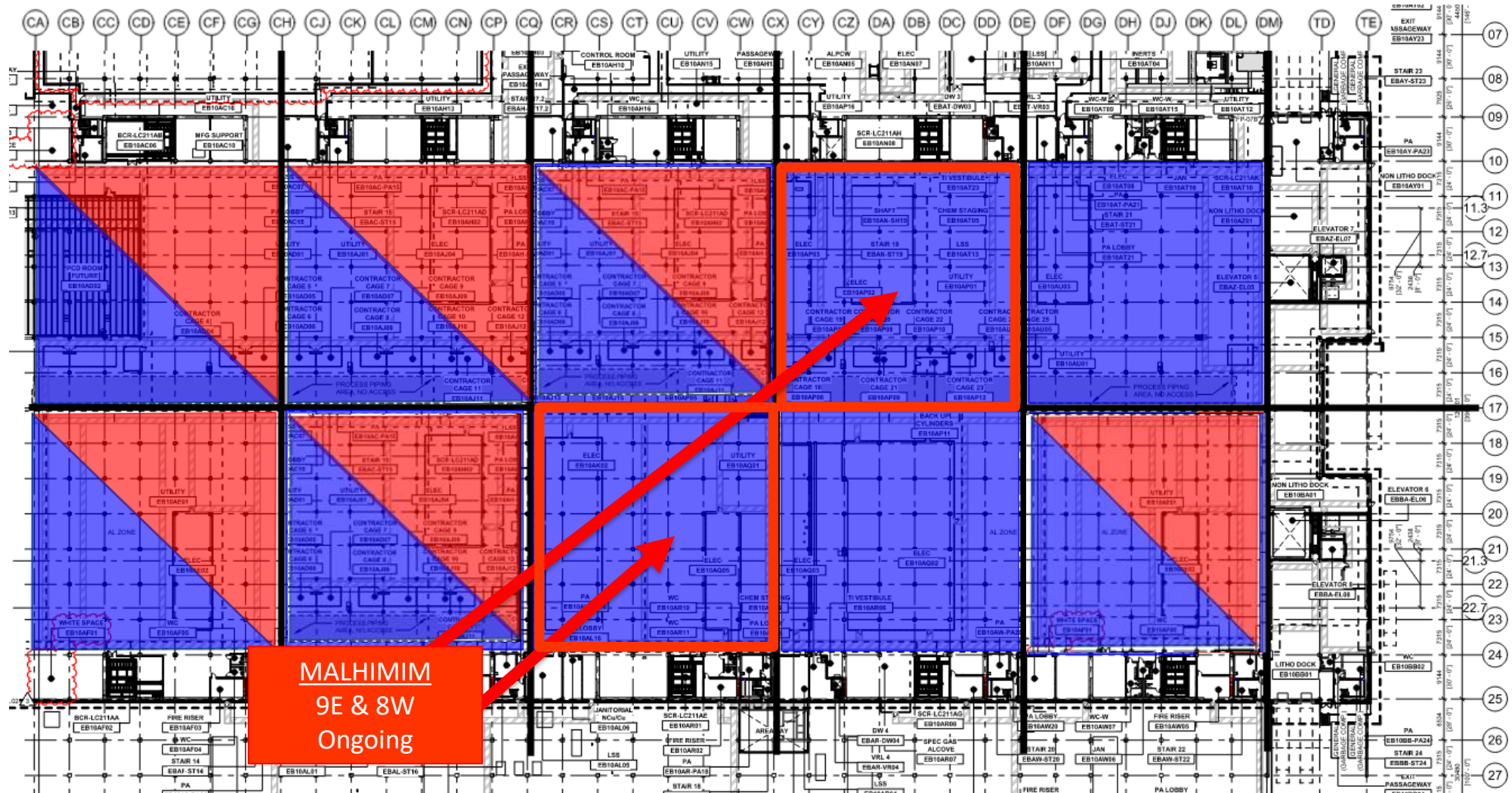
BELFOR
Mold remediation

ELRAM
Drywall install

MEP+Electrical
Ready for re-install

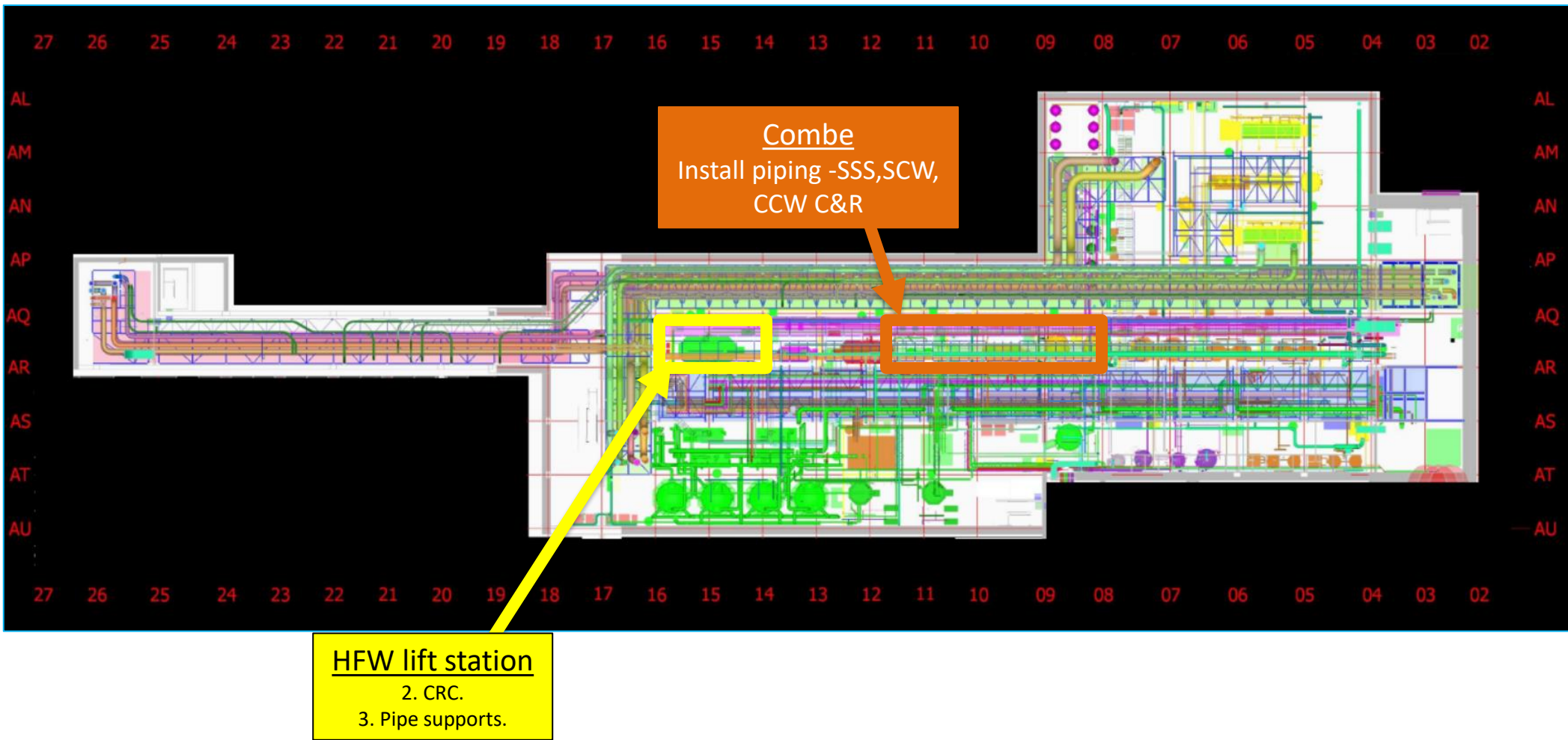


UTILITY LEVEL MOD2

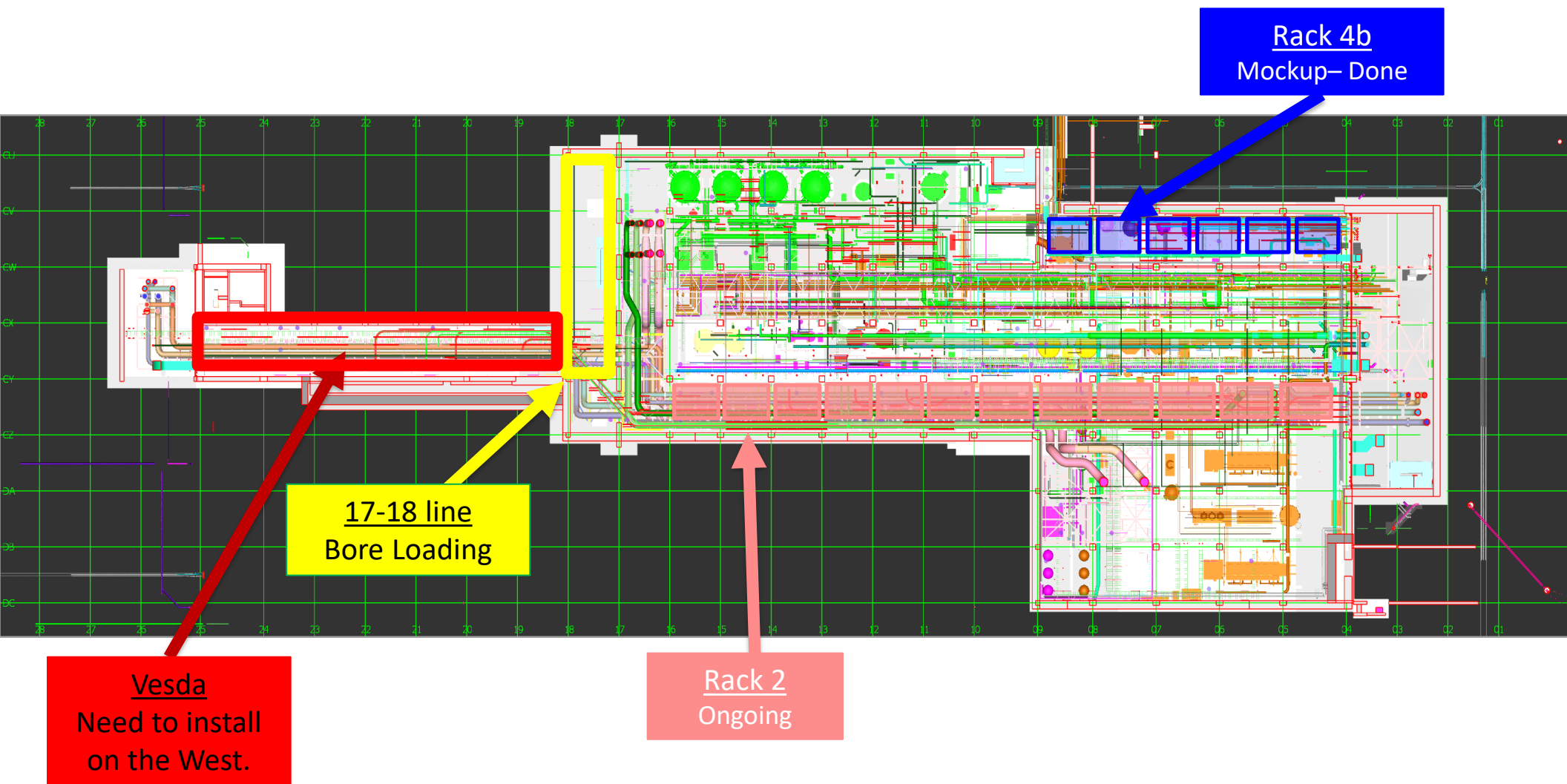




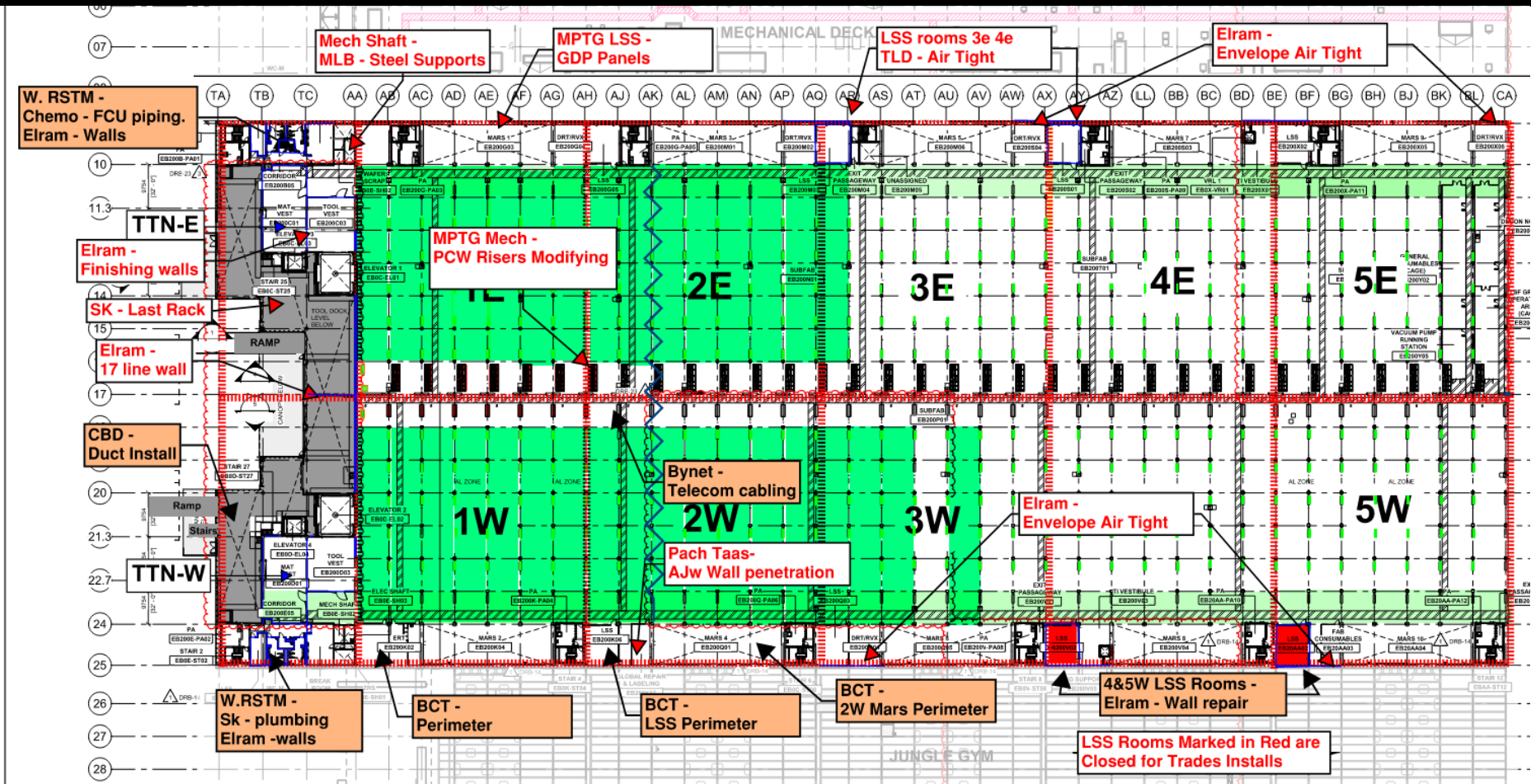
SUT 38.1 LEVEL



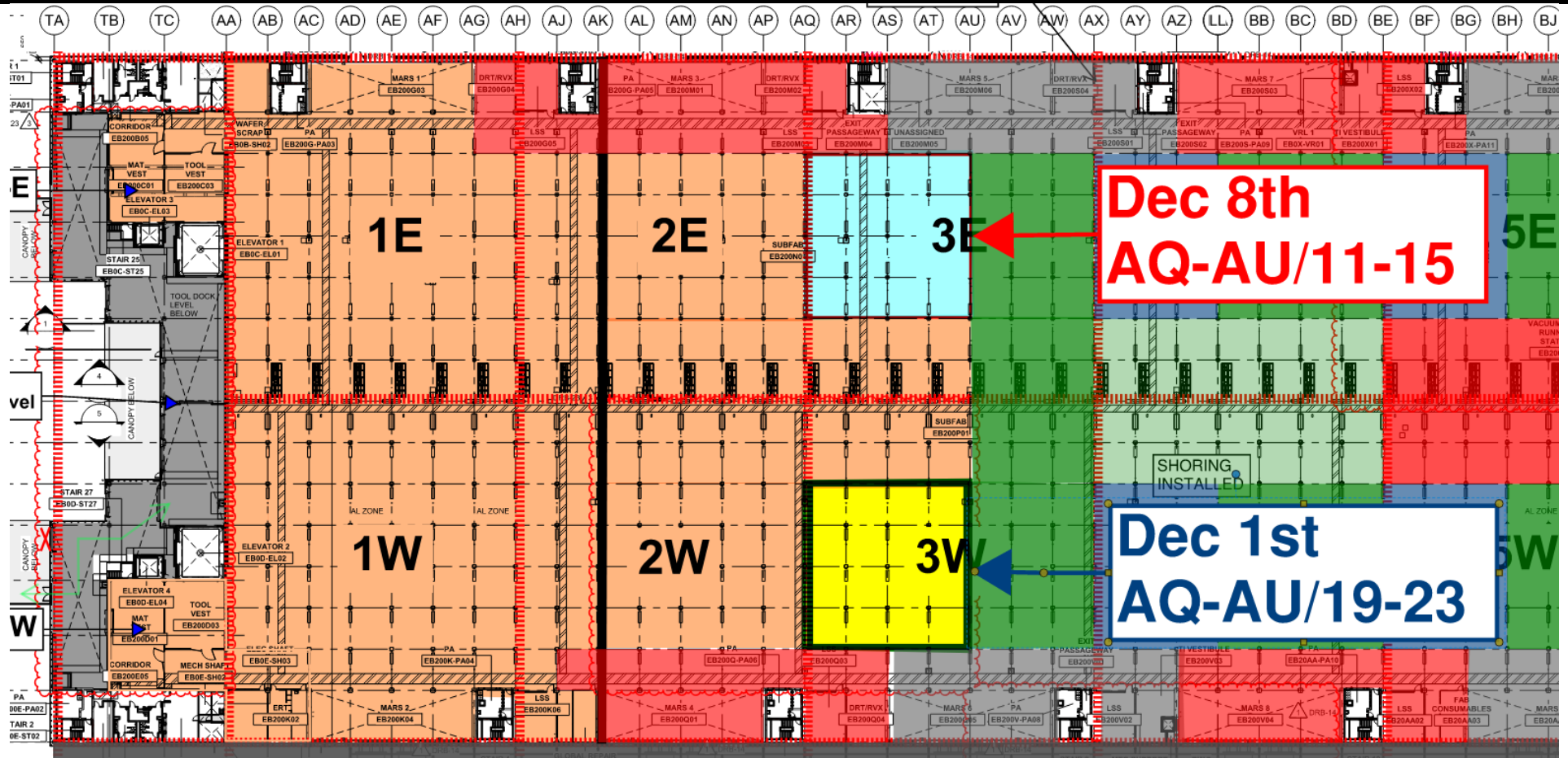
SUT 38.2 LEVEL



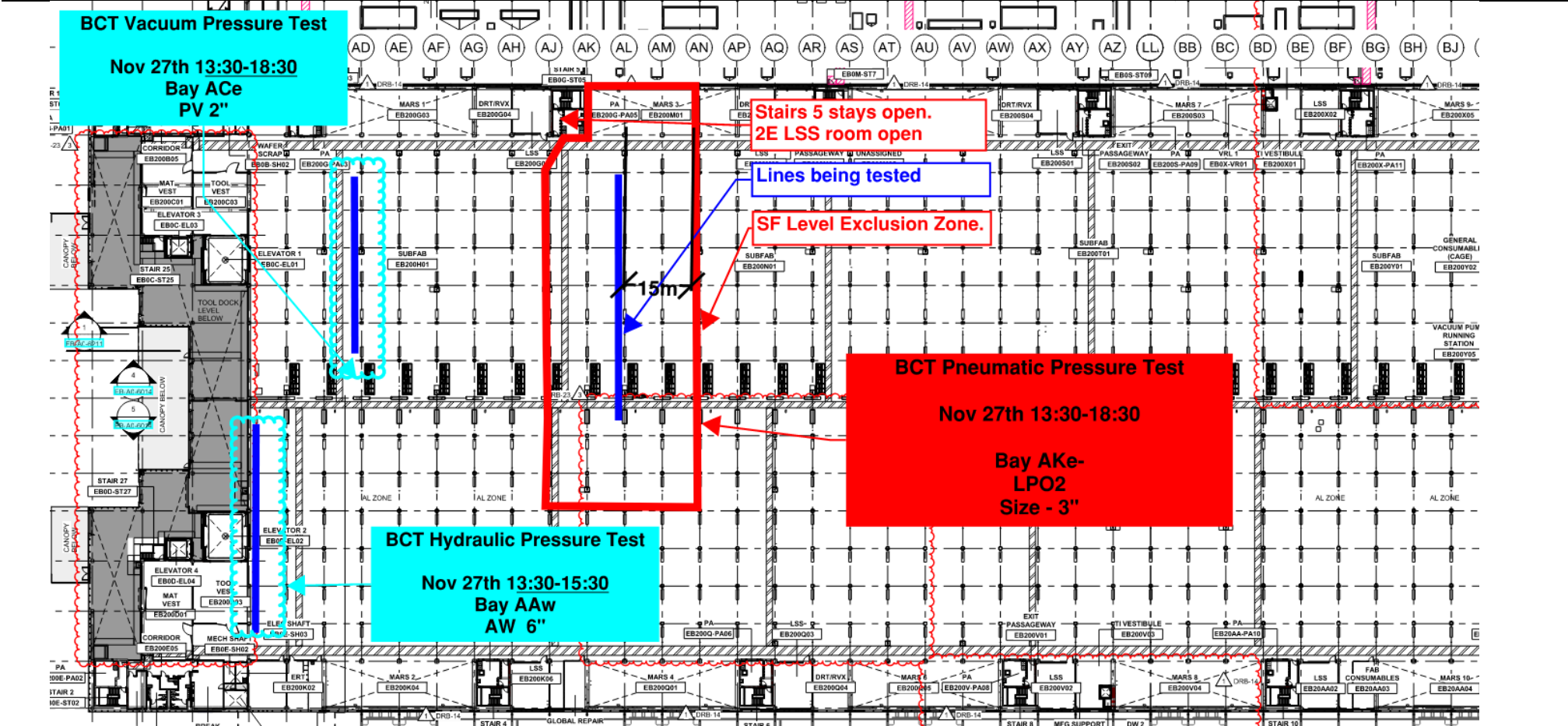
SUBFAB BUILDOUT MOD 1



SUBFAB CRC TOPCOAT

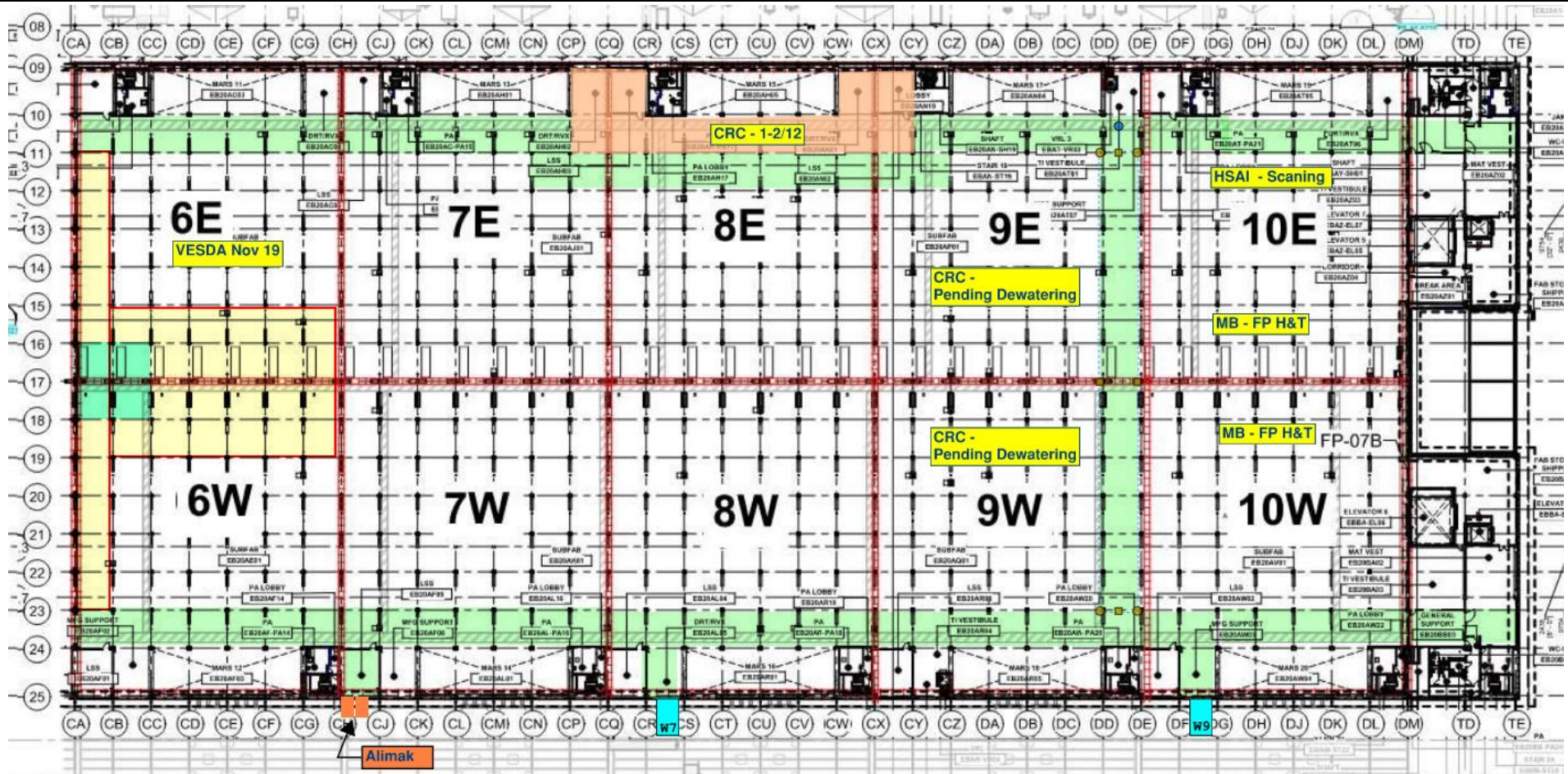


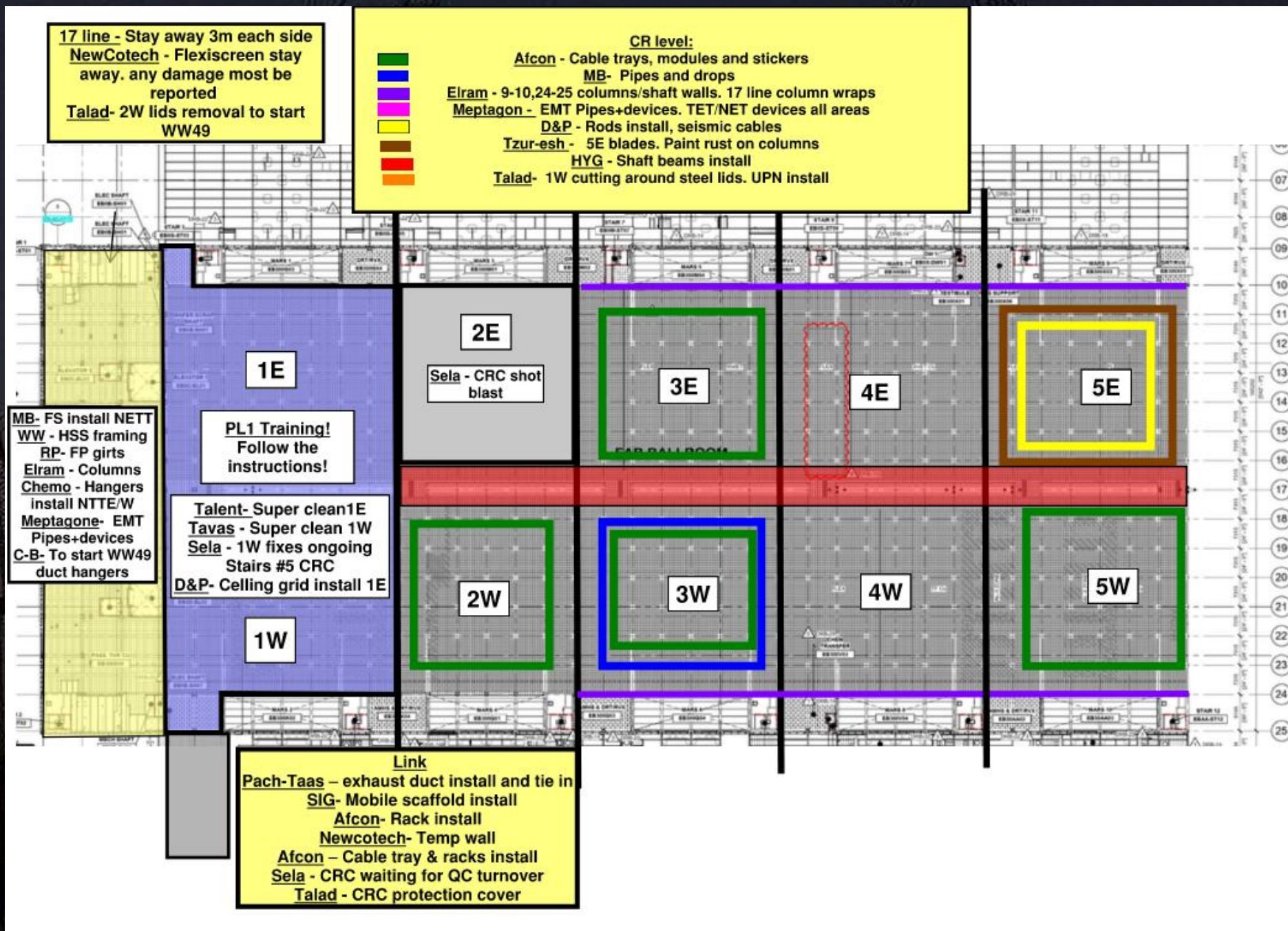
BCT Pressure Test Today

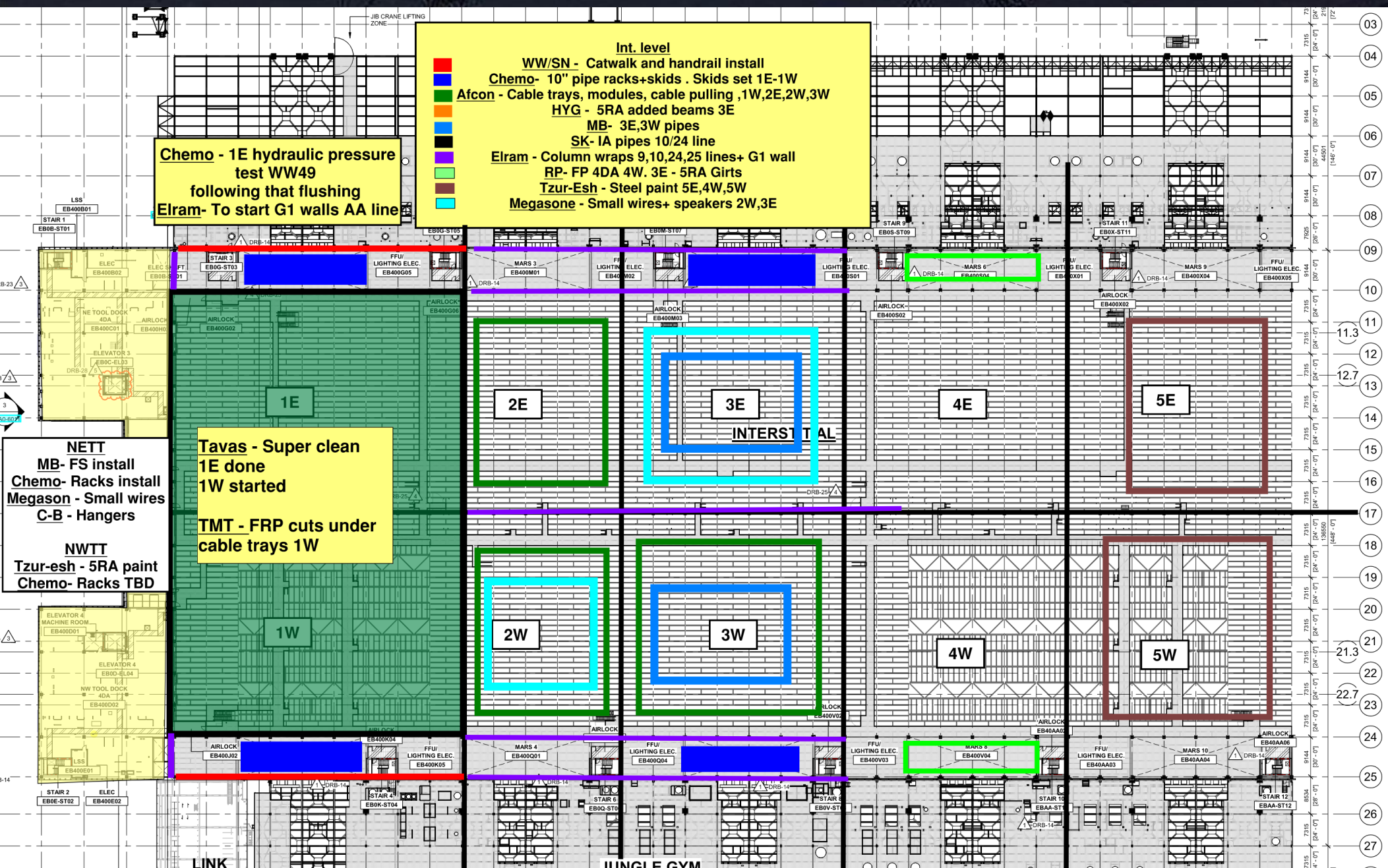


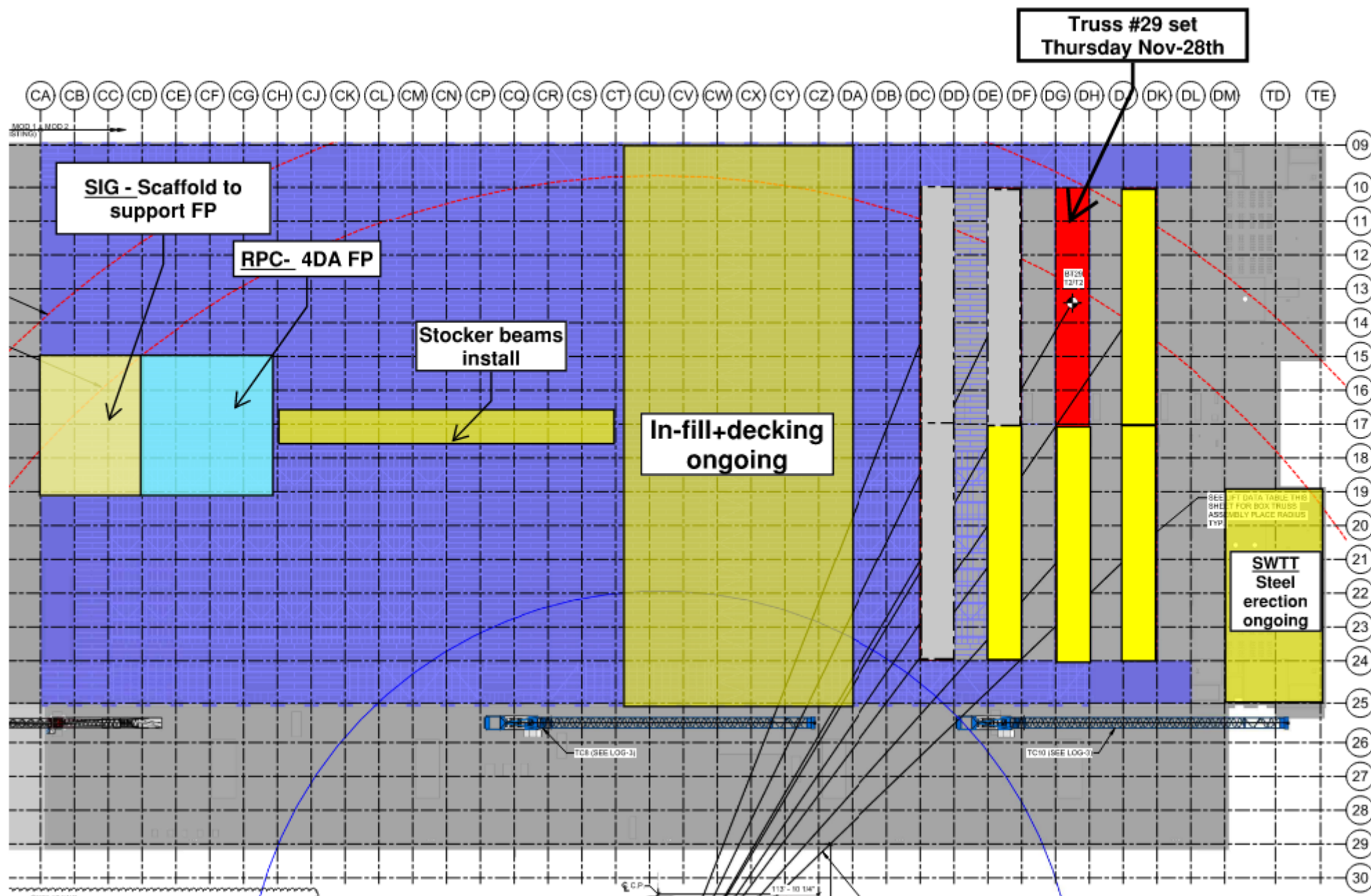
BCT Pressure Test Tomorrow

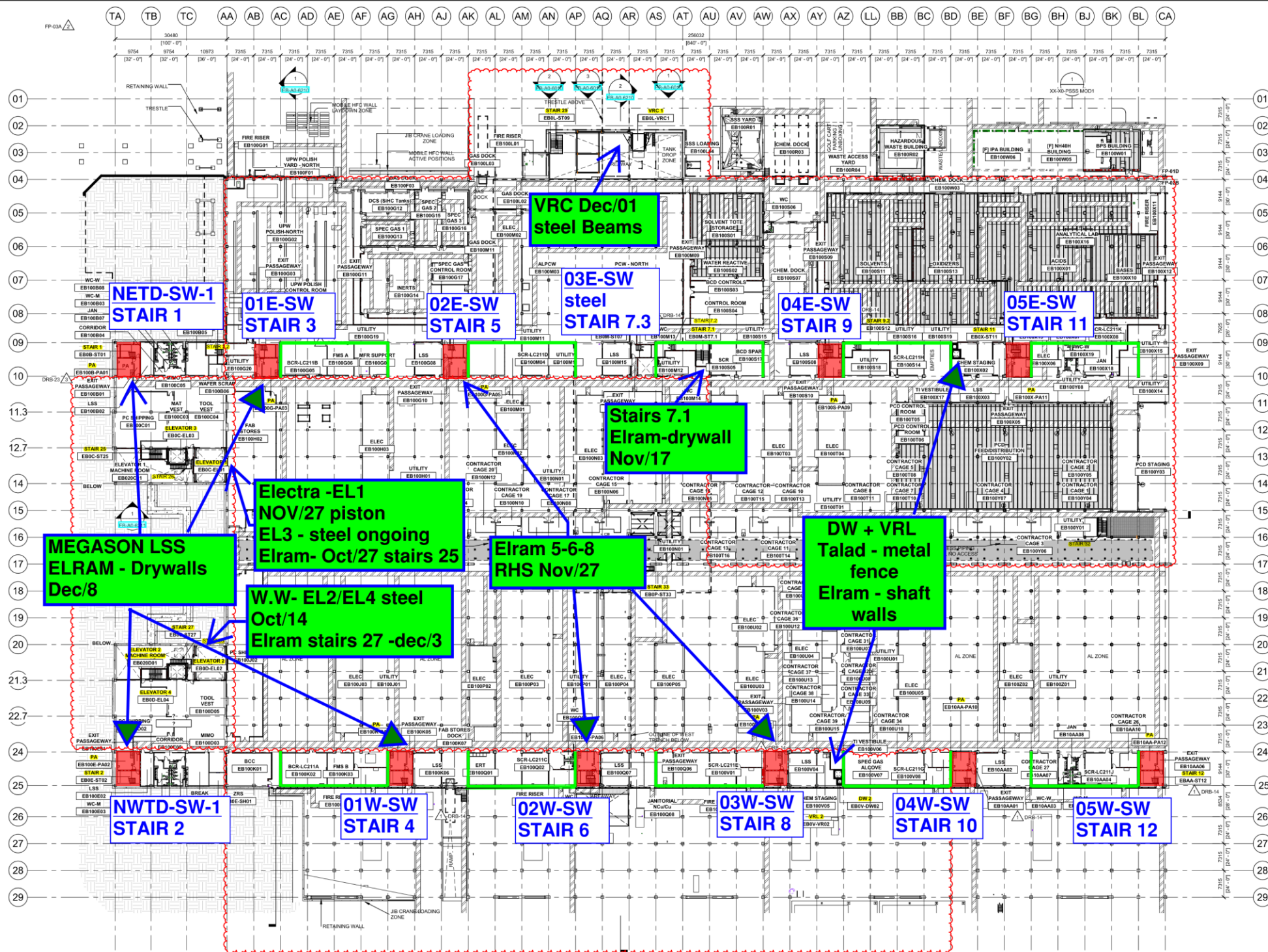
SUBFAB BUILDOUT MOD 2











Siding - East FAB - PSSS

BLOWDOWN 30%

[illegible]

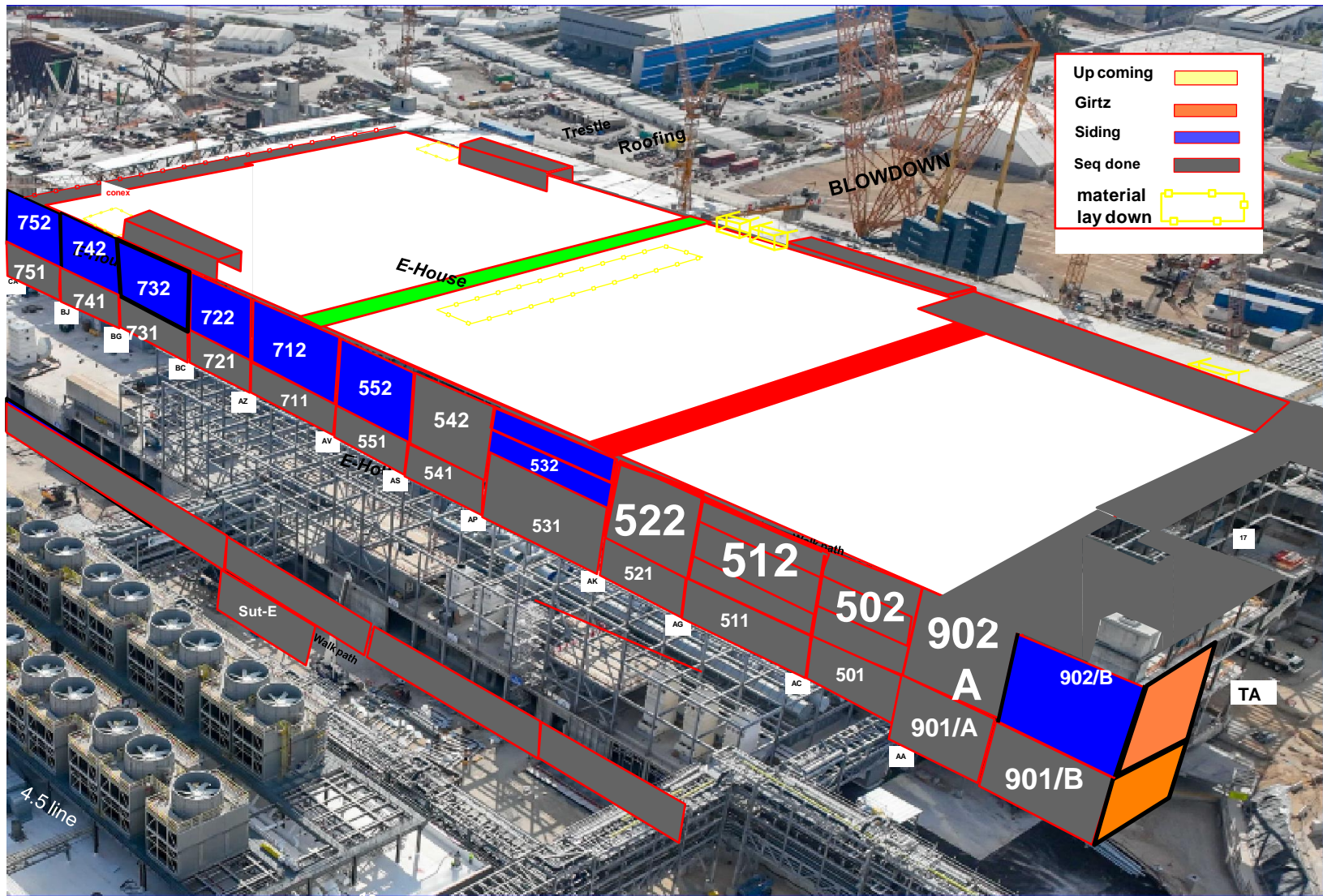
EB-0BA-SUB-UTILITY - 132,797

Siding - West FAB - JYG

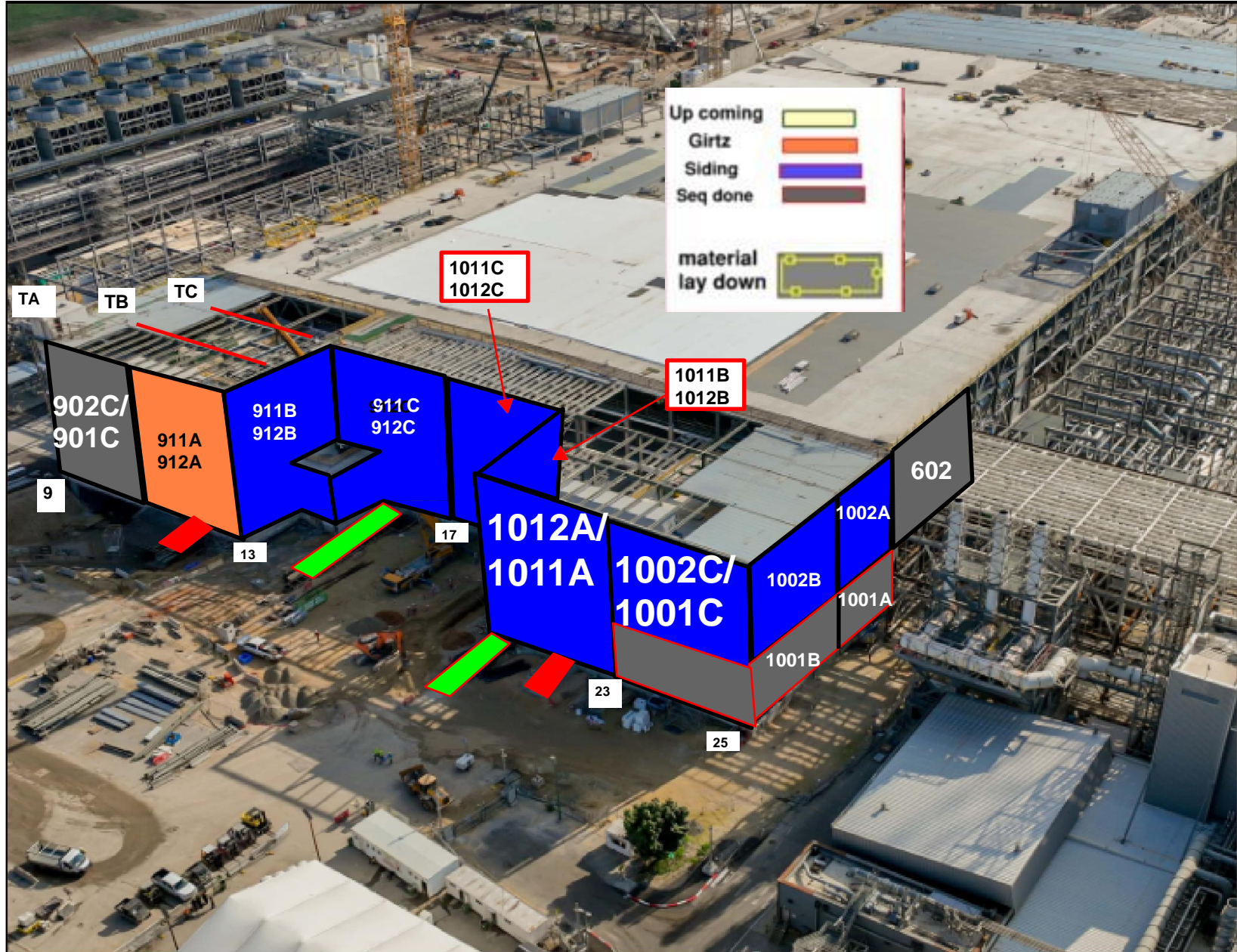
BLOWDOWN 30%

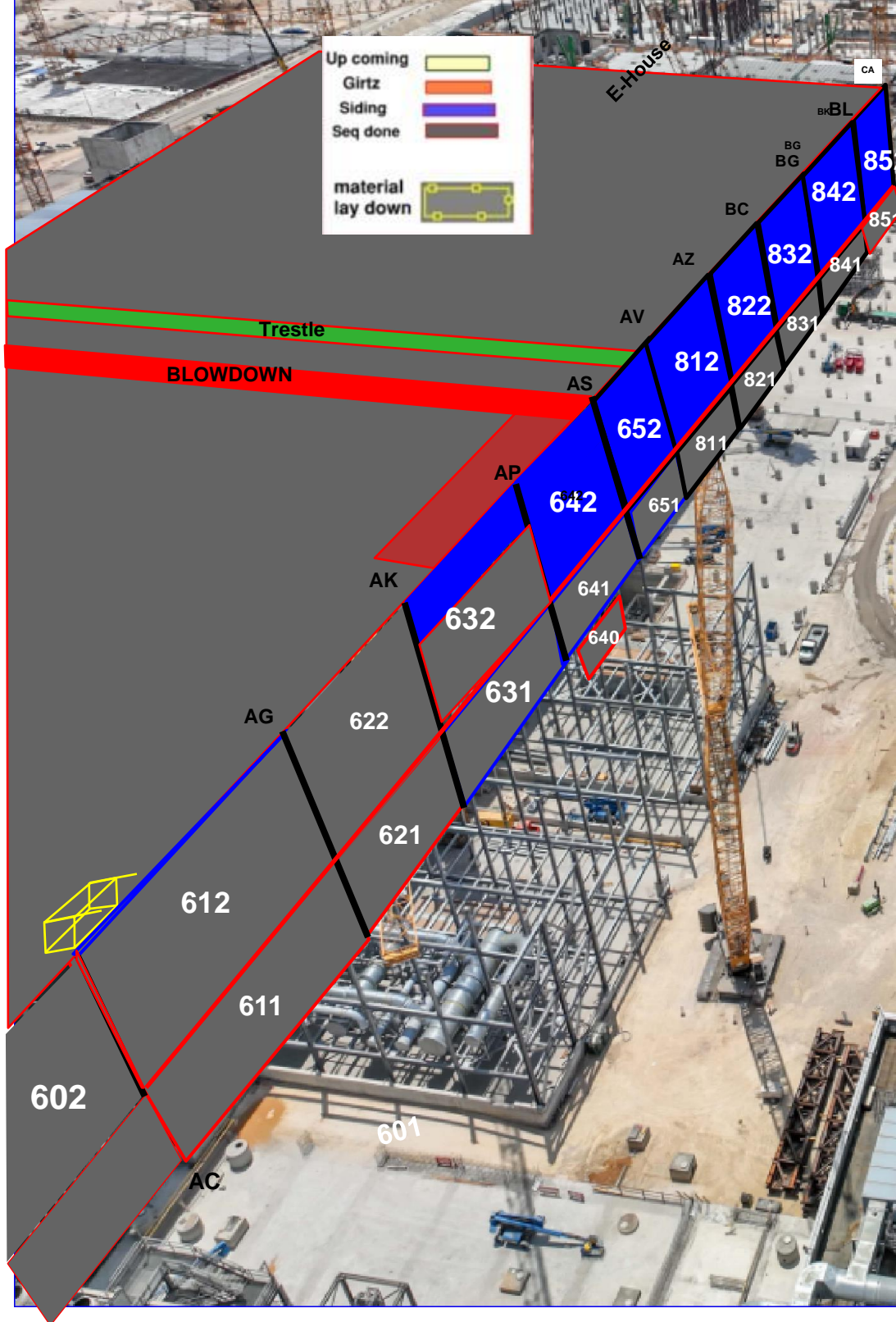
Link

EB-08A-SUB-UTILITY - 132,797



Walk path

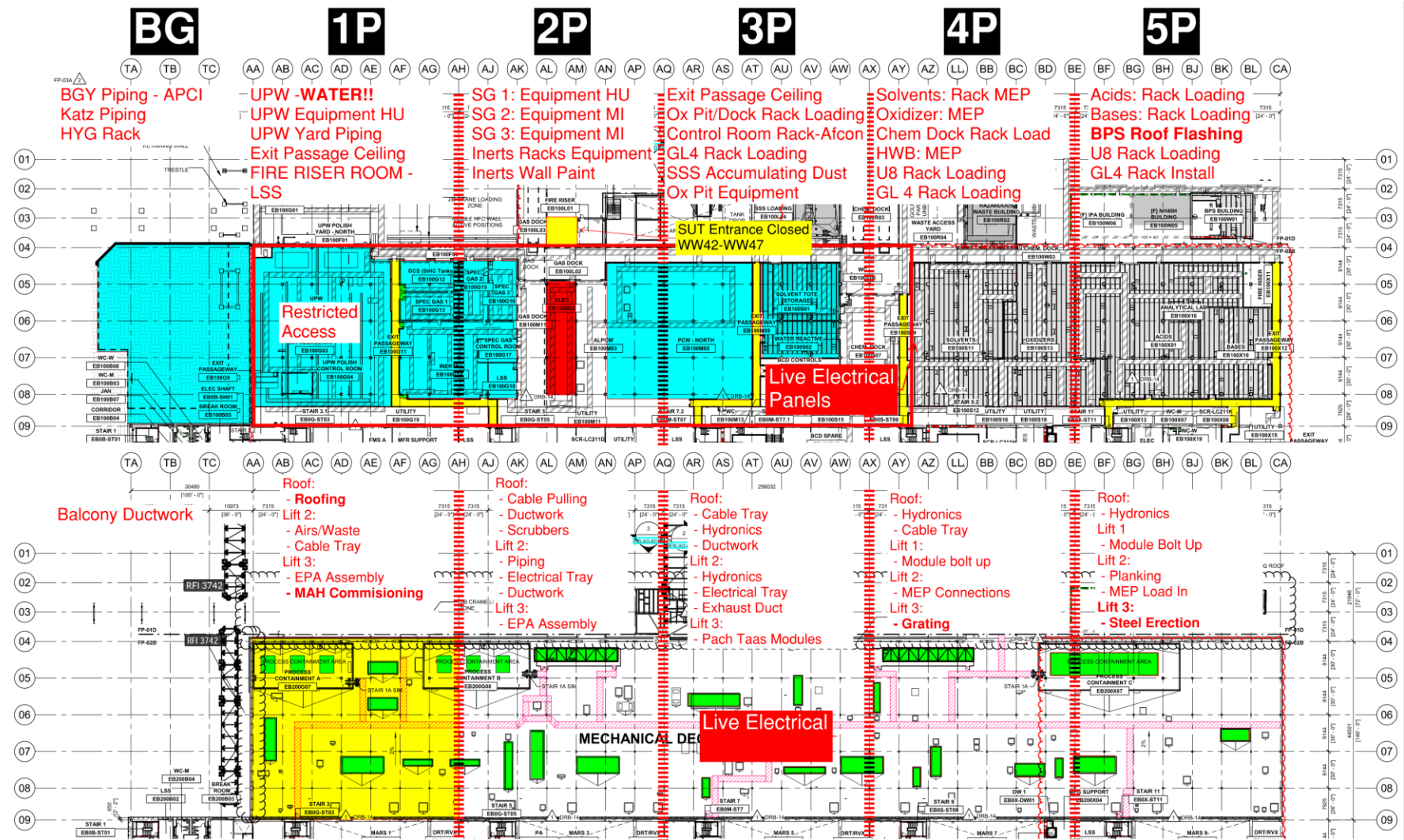




PSSS.1

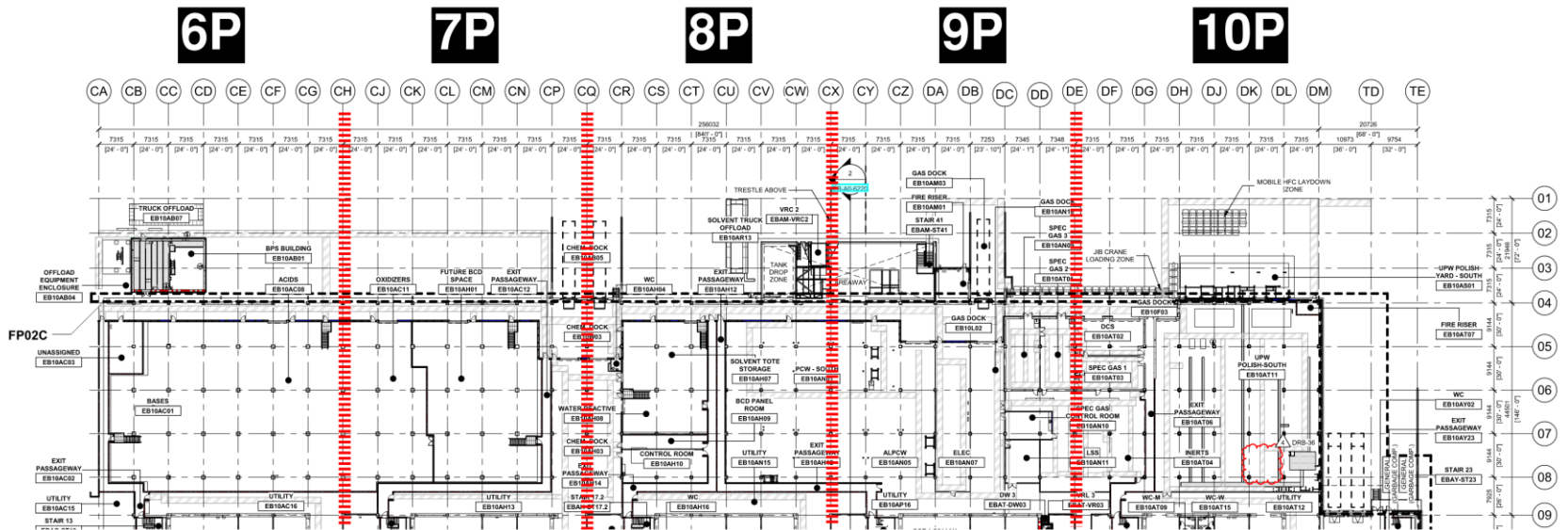
Utility Level 1YA

PSSS Roof 2SA

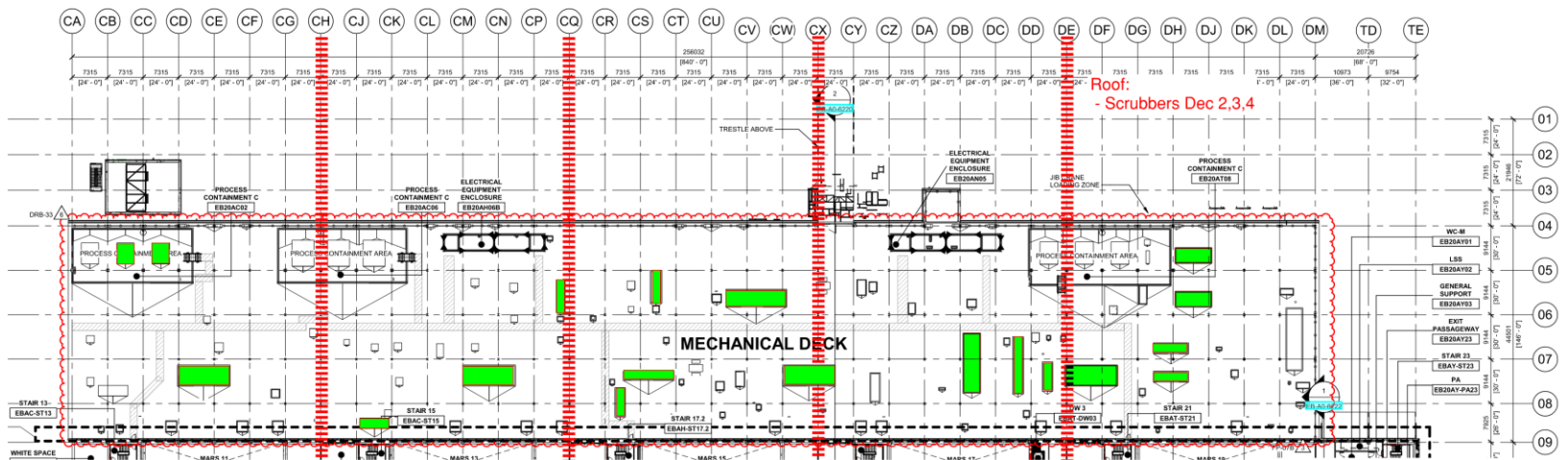


PSSS.2

Utility Level 1YA



PSSS Roof 2SA





WJG 01J, 02J LIFT 2 & 3





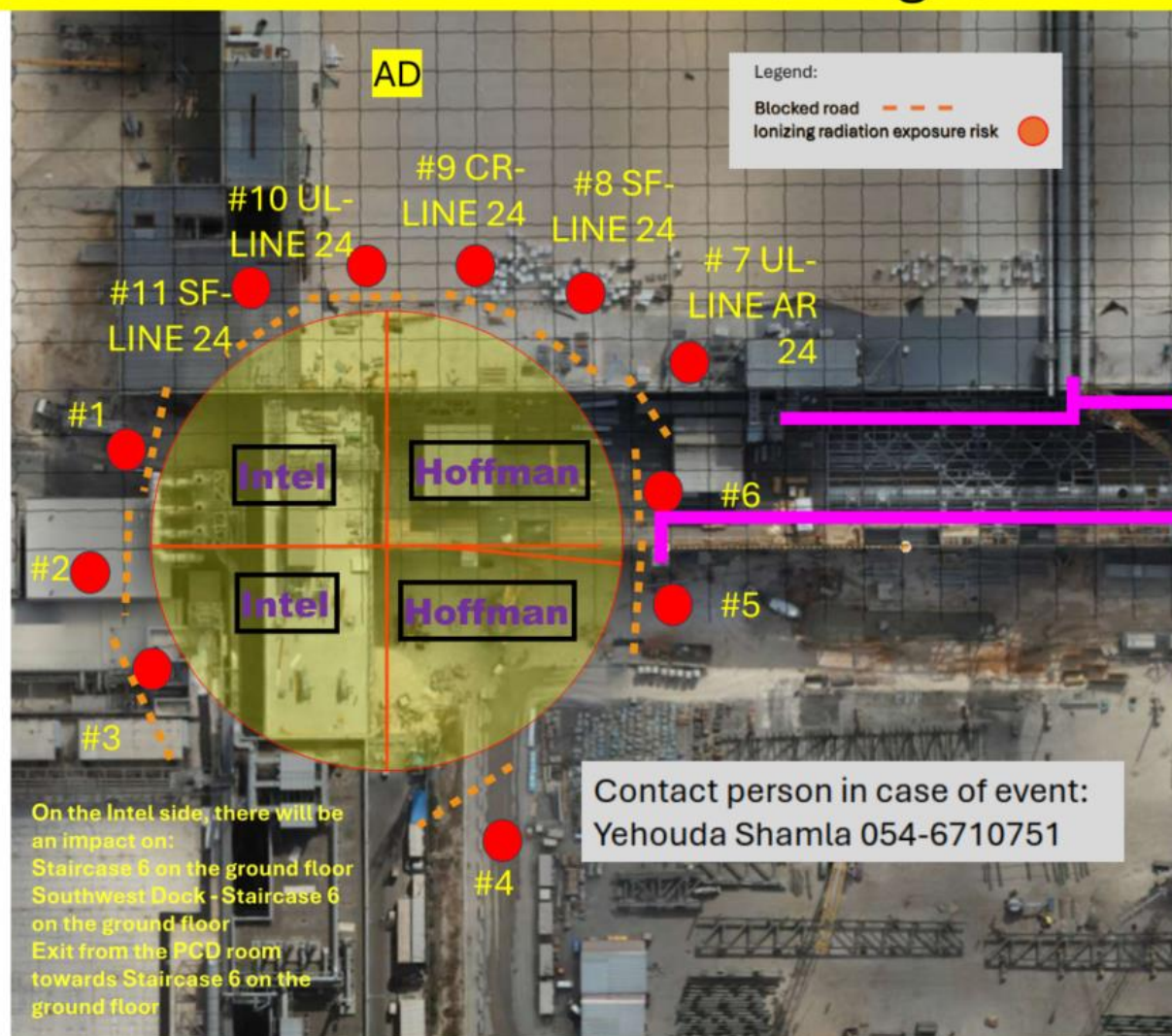
WJG 03J, 04J, 05J LIFT 2 & 3





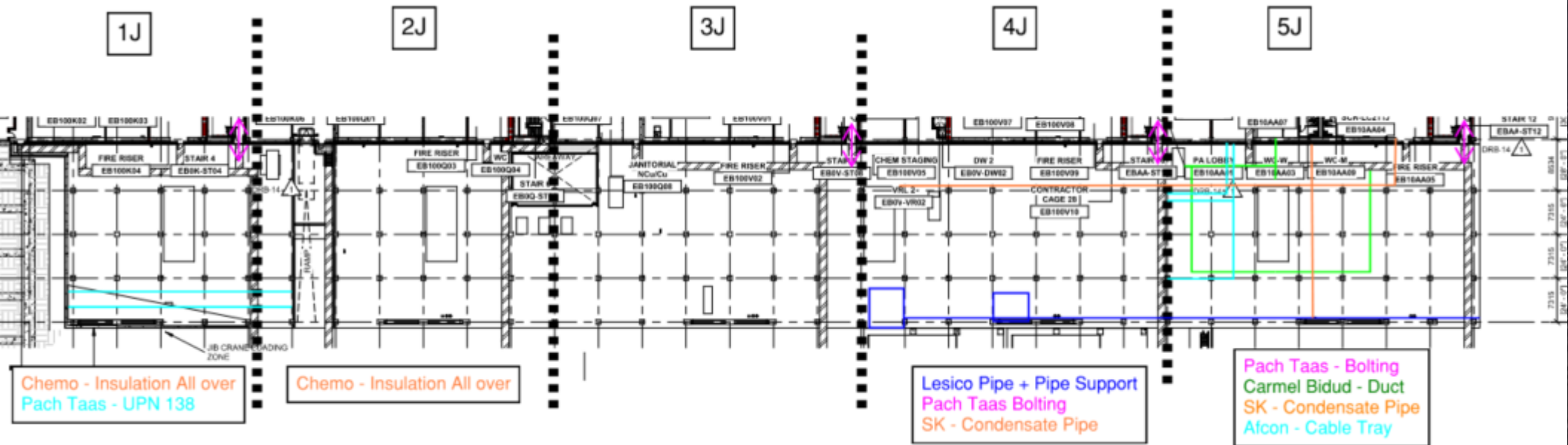
NDT TESTING – 26.11.2024 0100 - 0300

WJG Lesico NG NDT-8" -2 welds grid line AD





WJG UTILITY LEVEL BUILD OUT

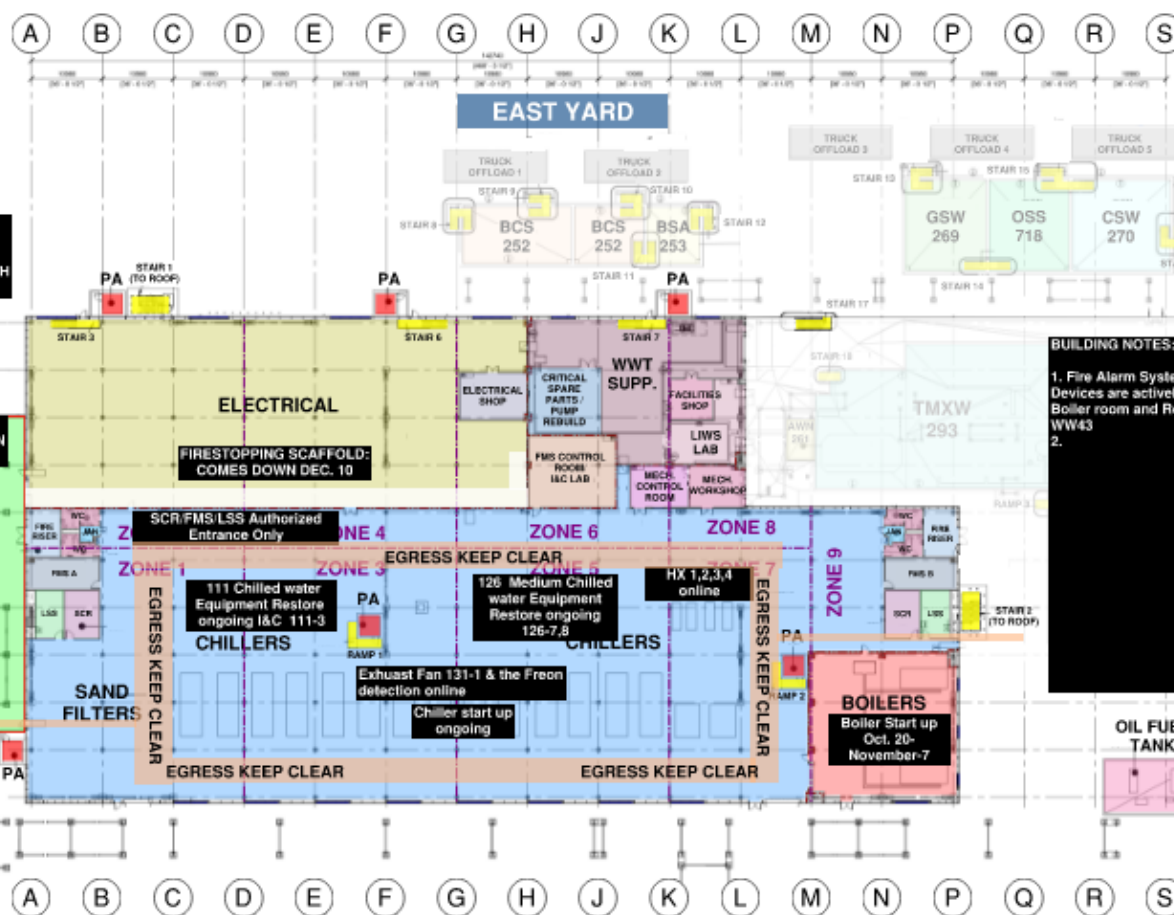




CUB 1

CUB 1 COORDINATION MAP

UPDATED __ / __ / __



ALARM NOTES:
1. FIRE ALARM: WAIT FOR HCC DIRECTION
2. GAS ALARM: EVACUATE TO NORTH YARD

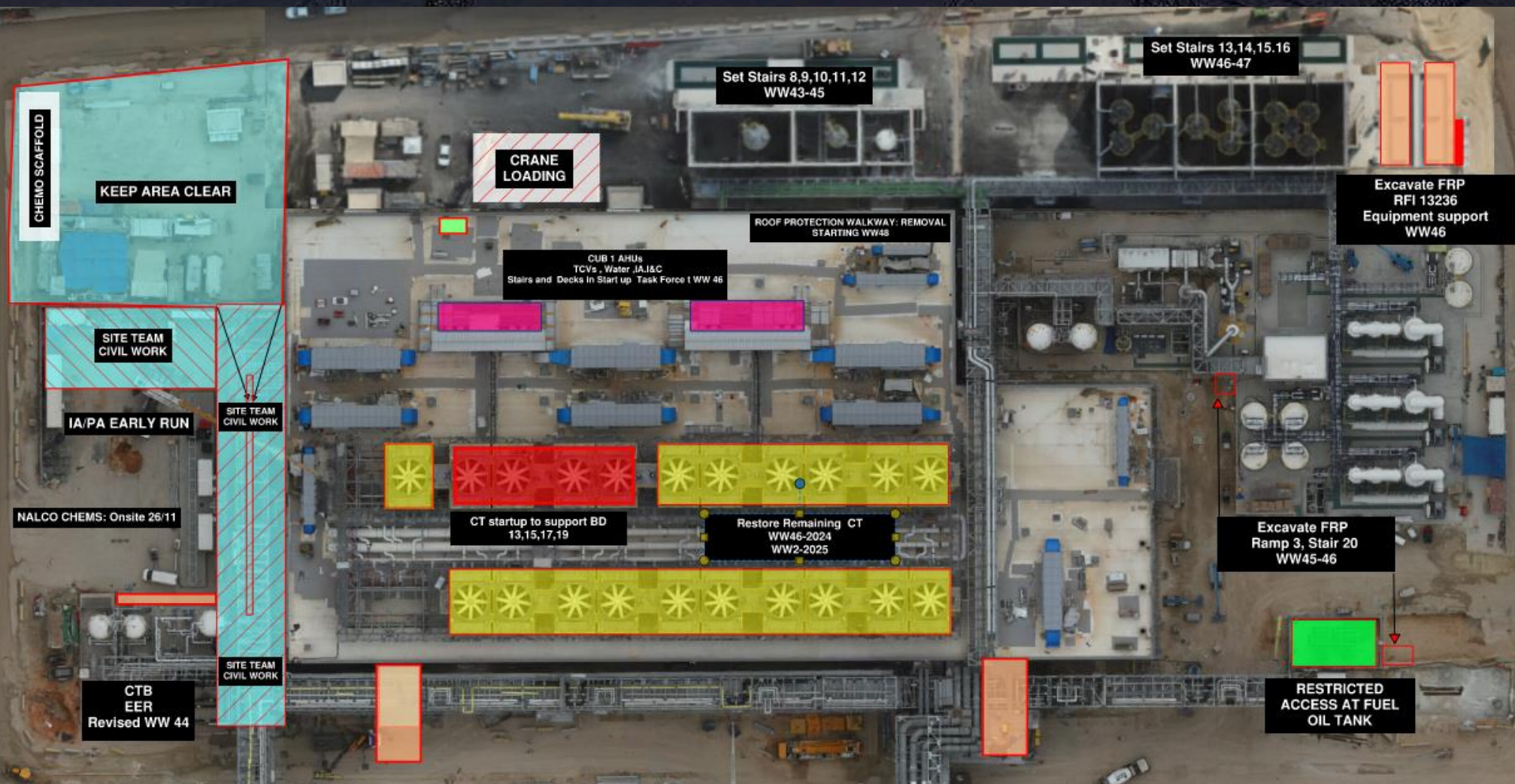
BUILDING NOTES:
1. Fire Alarm System
Devices are actively monitored
Boiler room and Roof Charged with Water WW43
2.

Legend:

- PROTECTED AREA
- STAIRS / RAMPS
- YARDS
- TRUCK OFF/LOADING

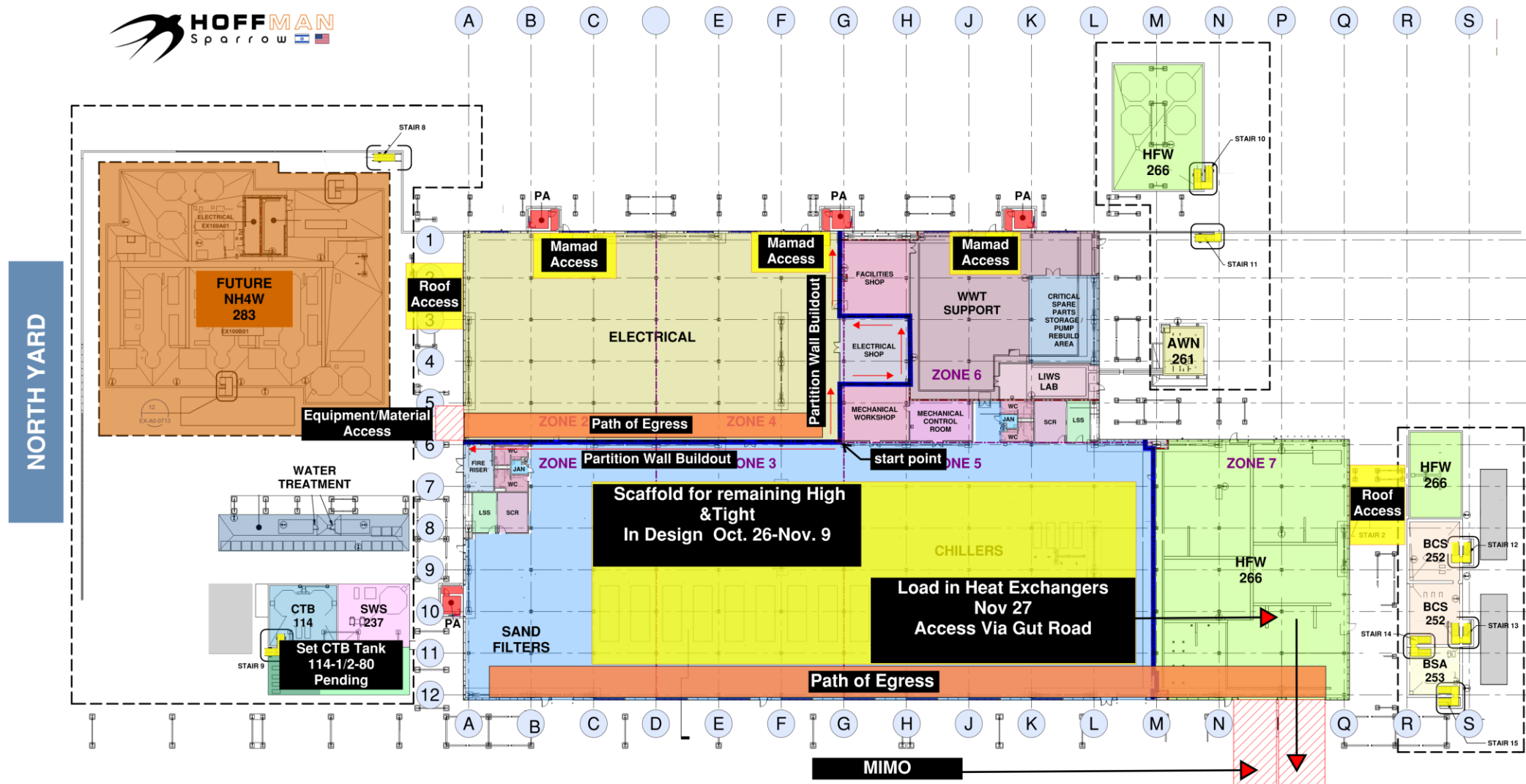
North Arrow: N ←

CUB 1 – EXTERIOR/ROOF

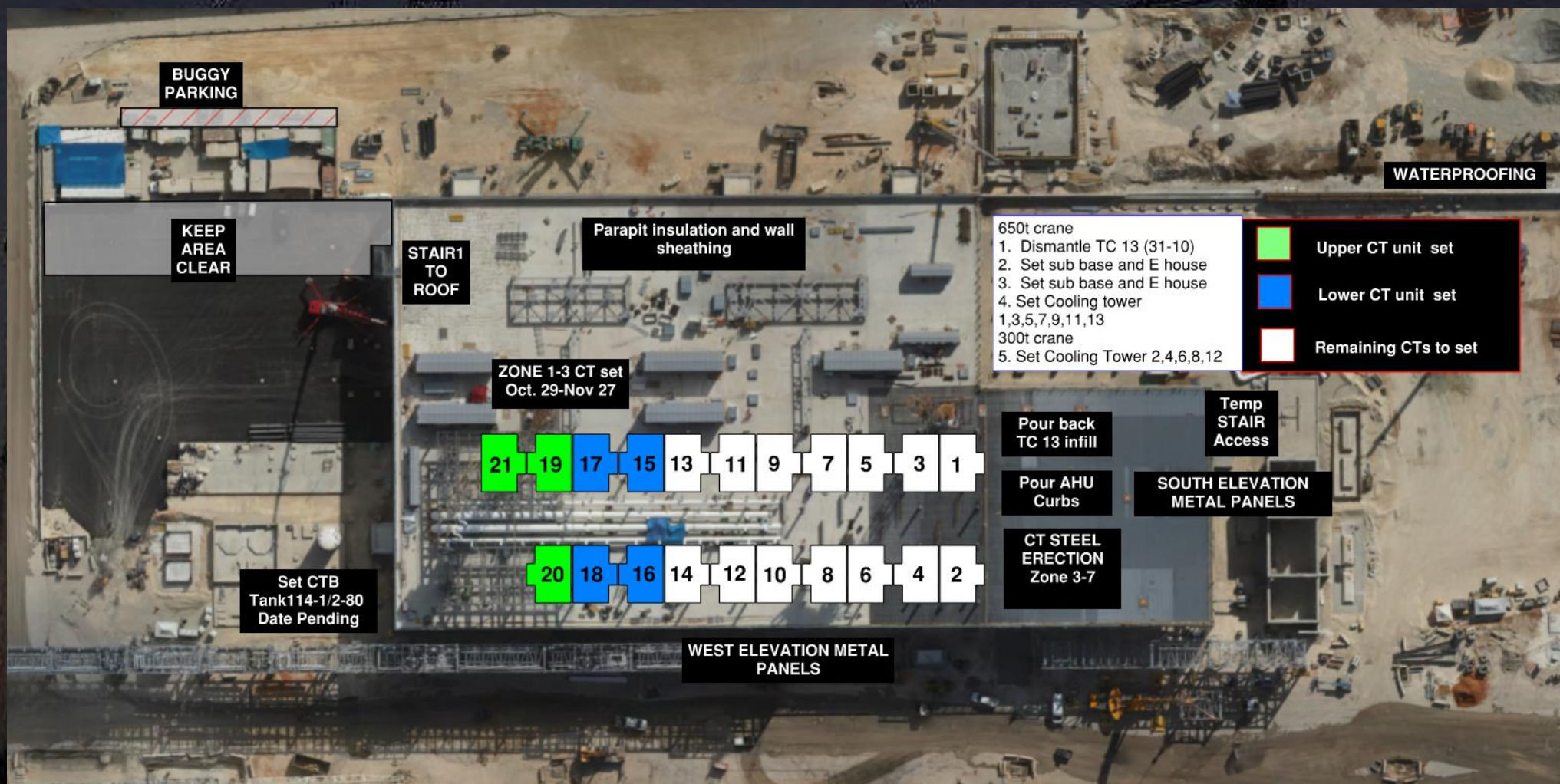


CUB 2- Load in and H&T

CUB 2 COORDINATION MAP



CUB 2 – EXTERIOR/ROOF

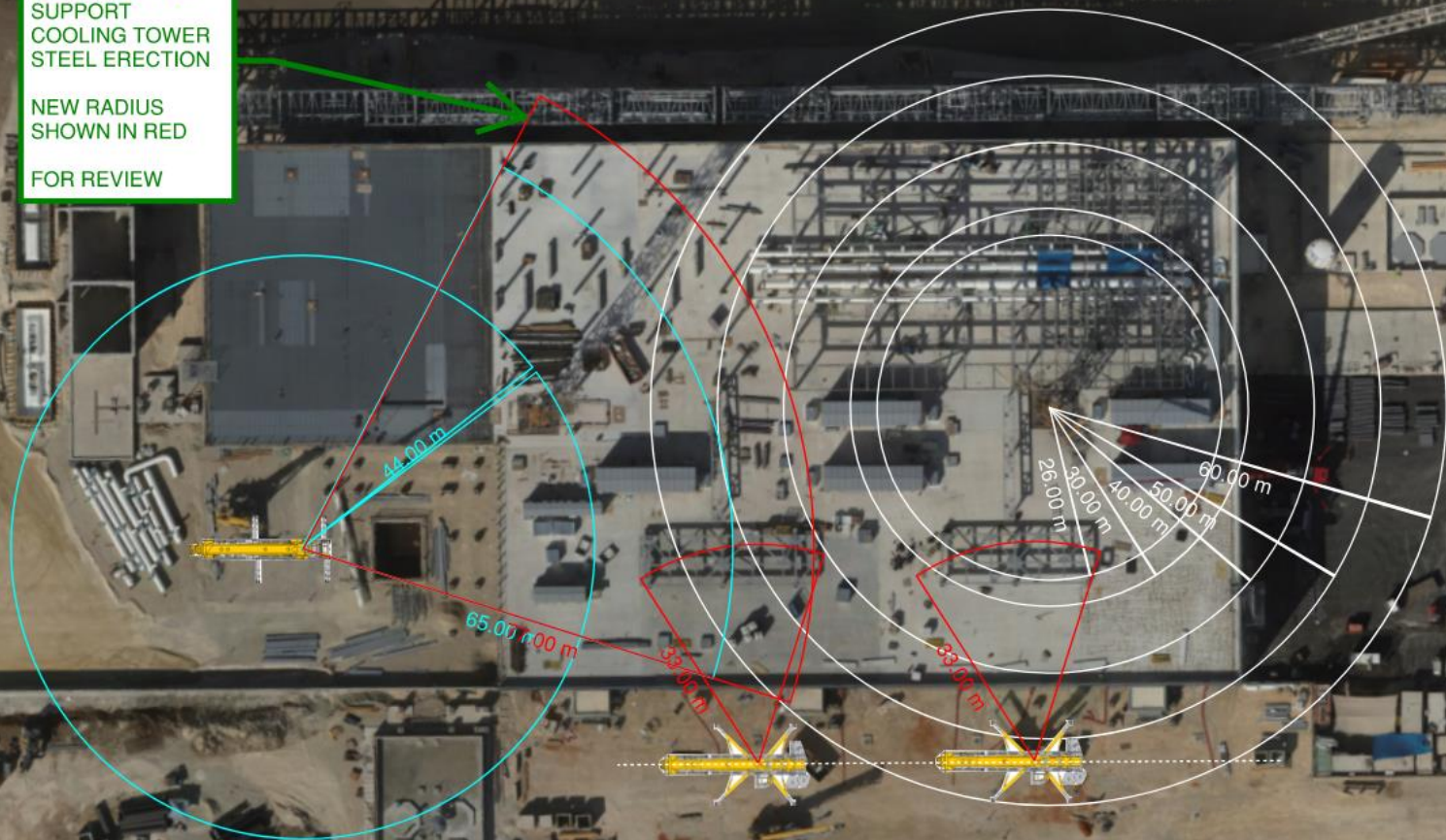


CUB 2 – Crane Logistics

PROPOSE TO ADD
12M JIB
EXTENSION TO
SUPPORT
COOLING TOWER
STEEL ERECTION

NEW RADIUS
SHOWN IN RED

FOR REVIEW

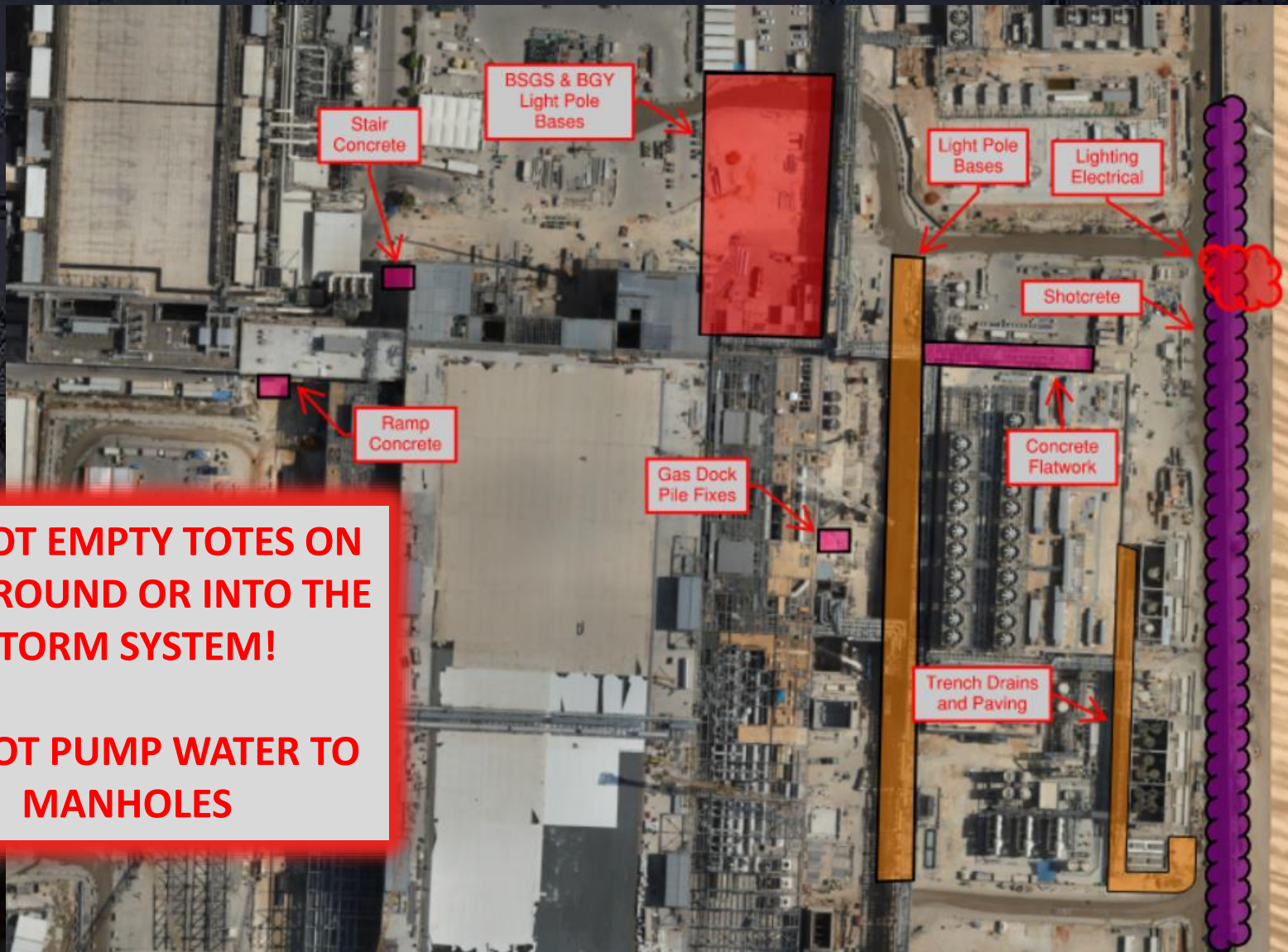




Daily Coordination Meeting

Site Logistics

North



**DO NOT EMPTY TOTES ON
THE GROUND OR INTO THE
STORM SYSTEM!**

**DO NOT PUMP WATER TO
MANHOLES**



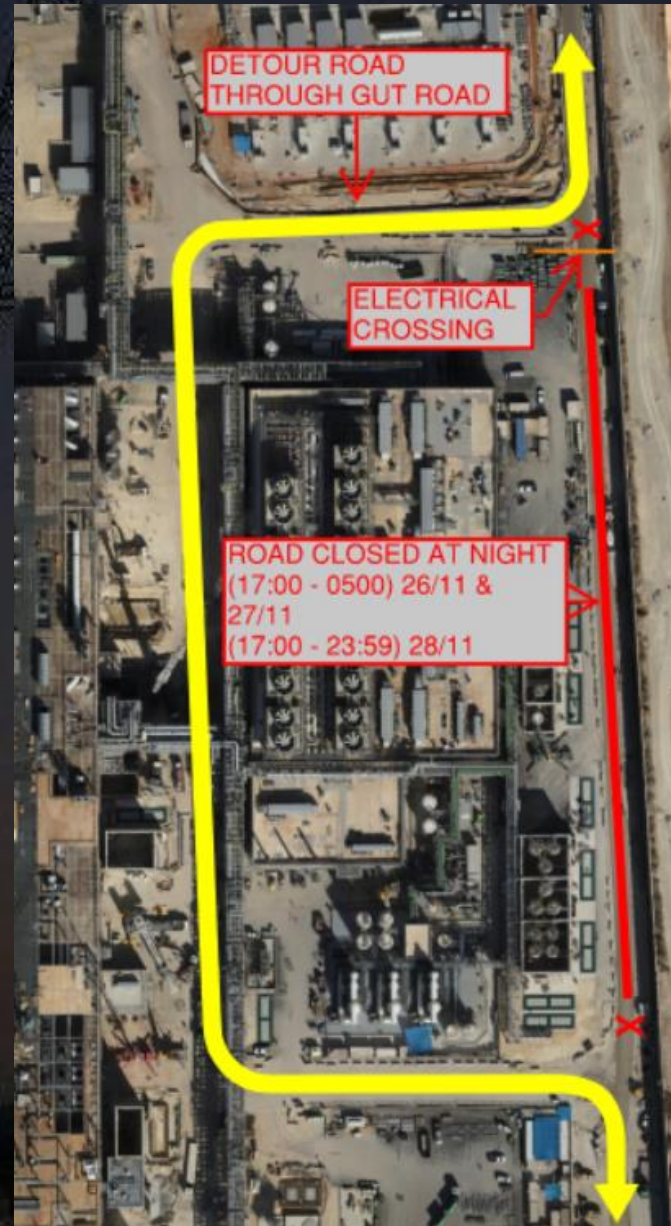
HOFFMAN CONSTRUCTION COMPANY



Daily Coordination Meeting

Site Logistics

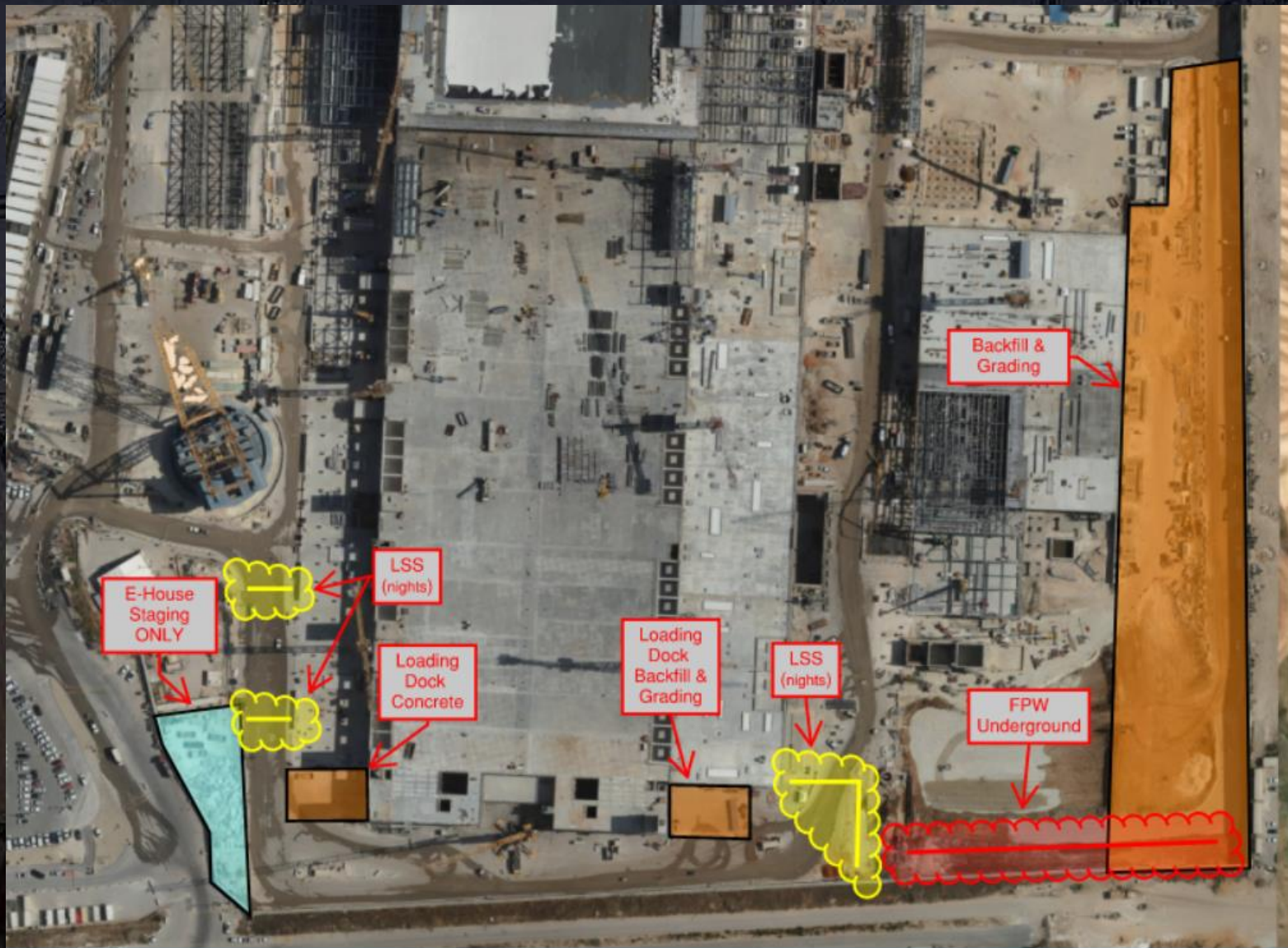
North Detour



Daily Coordination Meeting

Site Logistics

South



Rigging Plans are Required for All Hoists

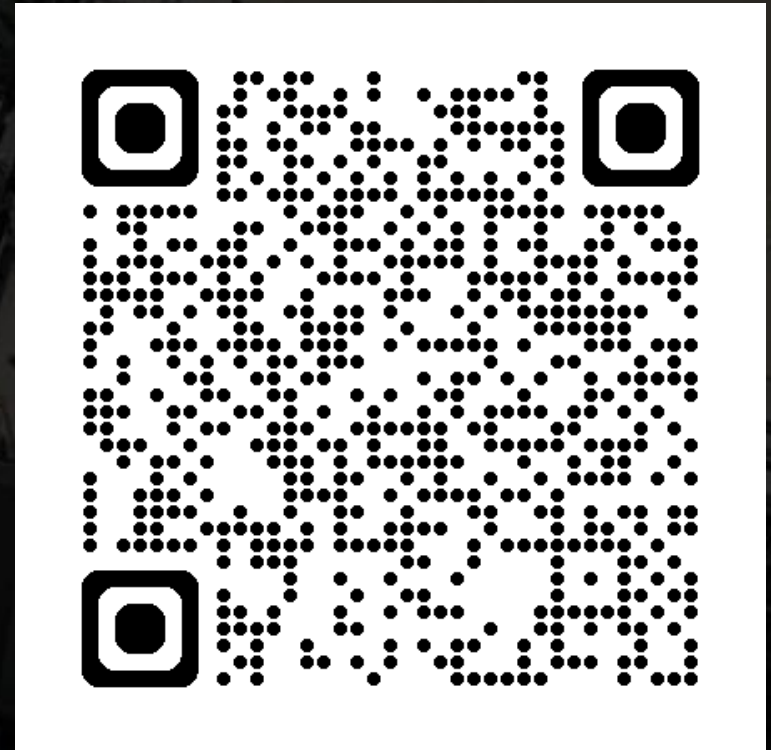
- This includes hoisting activities that are performed without a crane. Forklifts, chainfalls, etc.
- We continue to have to stop work in the field due to crews not having appropriate plans for their work.
- If you aren't sure if you need a rigging plan, ask.
- If you aren't asking because you know the answer is that you do need a rigging plan, but you don't want to do one, make a rigging plan.
- You must know the weight of your load. And this does not just go for rigging plans, but for any material handling operation.

Line of Fire Campaign Activity

Stop and Think

Click on the link or scan the QR code. Ask a worker the 3 questions and fill out the survey

1. What pinch points or line of fire hazards are present with your work?
2. What pinch point or line of fire hazard do you not control?
3. What is one way you are going to change your behavior to better mitigate pinch points and line of fire hazards in your work?



Daily Coordination Meeting



14:00 Sign In