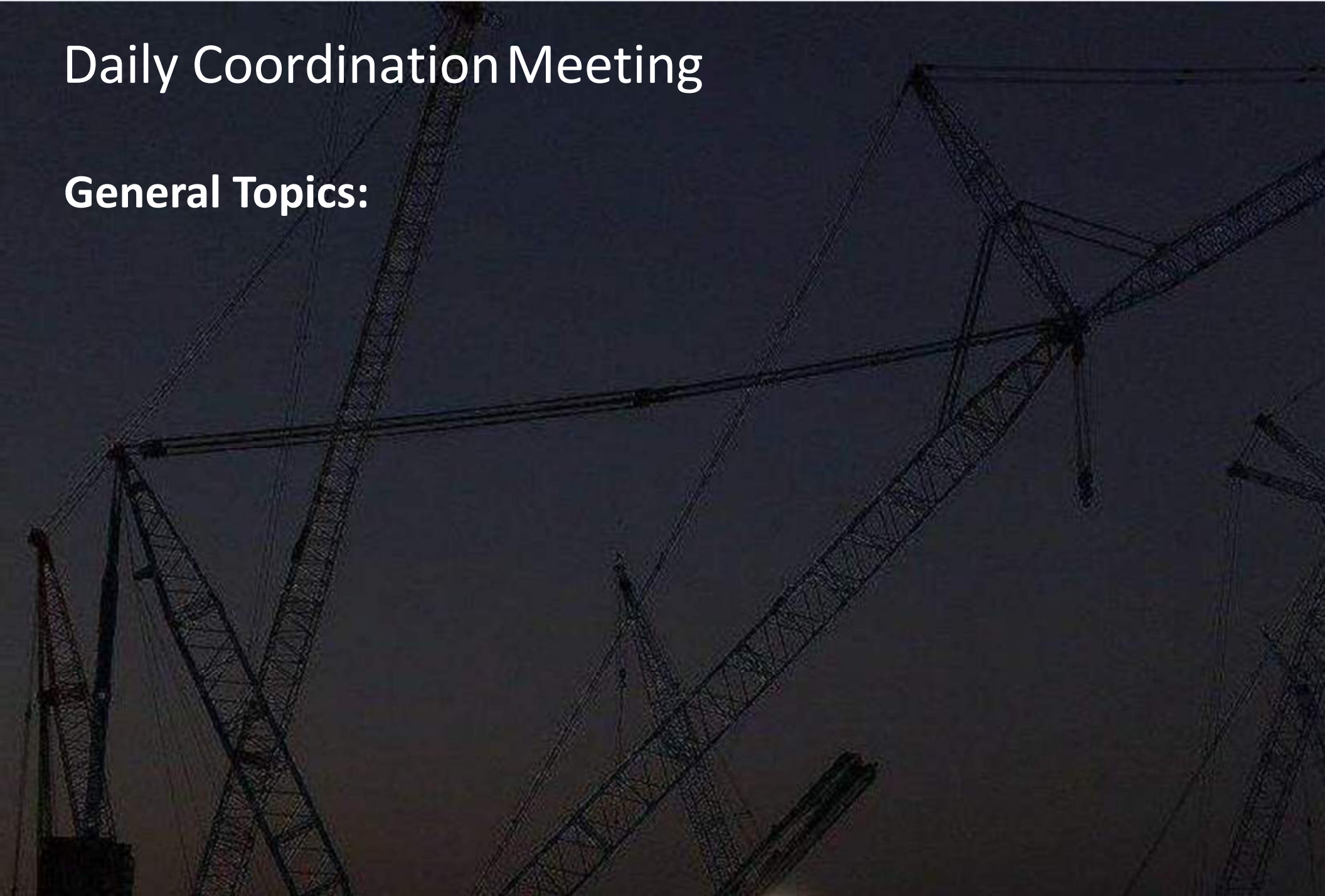


Daily Coordination Meeting



Daily Coordination Meeting

General Topics:





HOFFMAN CONSTRUCTION COMPANY



UTILITY LEVEL

TOOL TOWERS / NO STORAGE FROM March 16





HOFFMAN CONSTRUCTION COMPANY



UTILITY LEVEL

TOOL TOWERS / NO STORAGE FROM March 16





HOFFMAN CONSTRUCTION COMPANY



UTILITY LEVEL

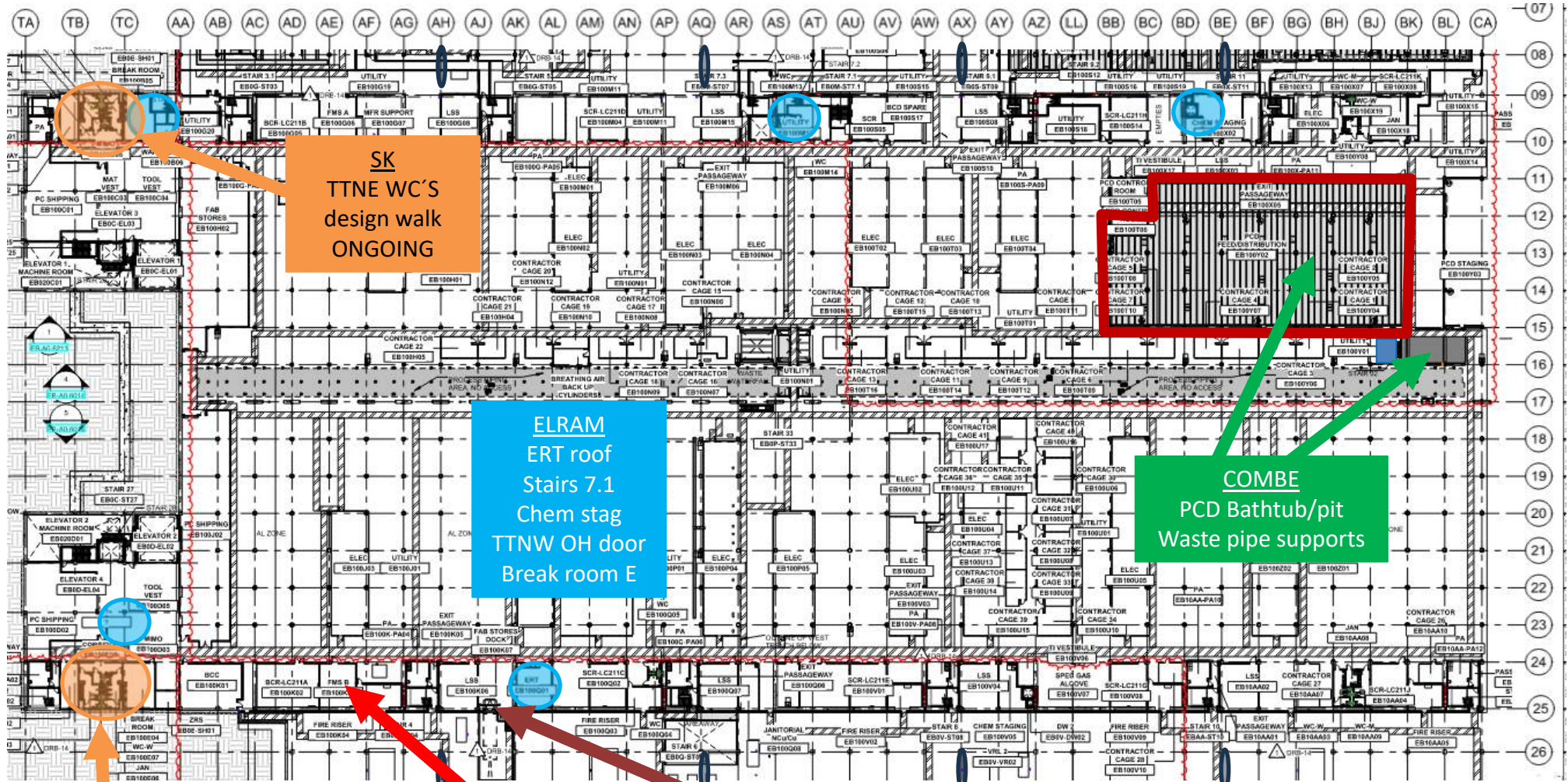
TOOL TOWERS / NO STORAGE FROM March 16





Safe distance PT HPOFA

UTILITY LEVEL MOD1

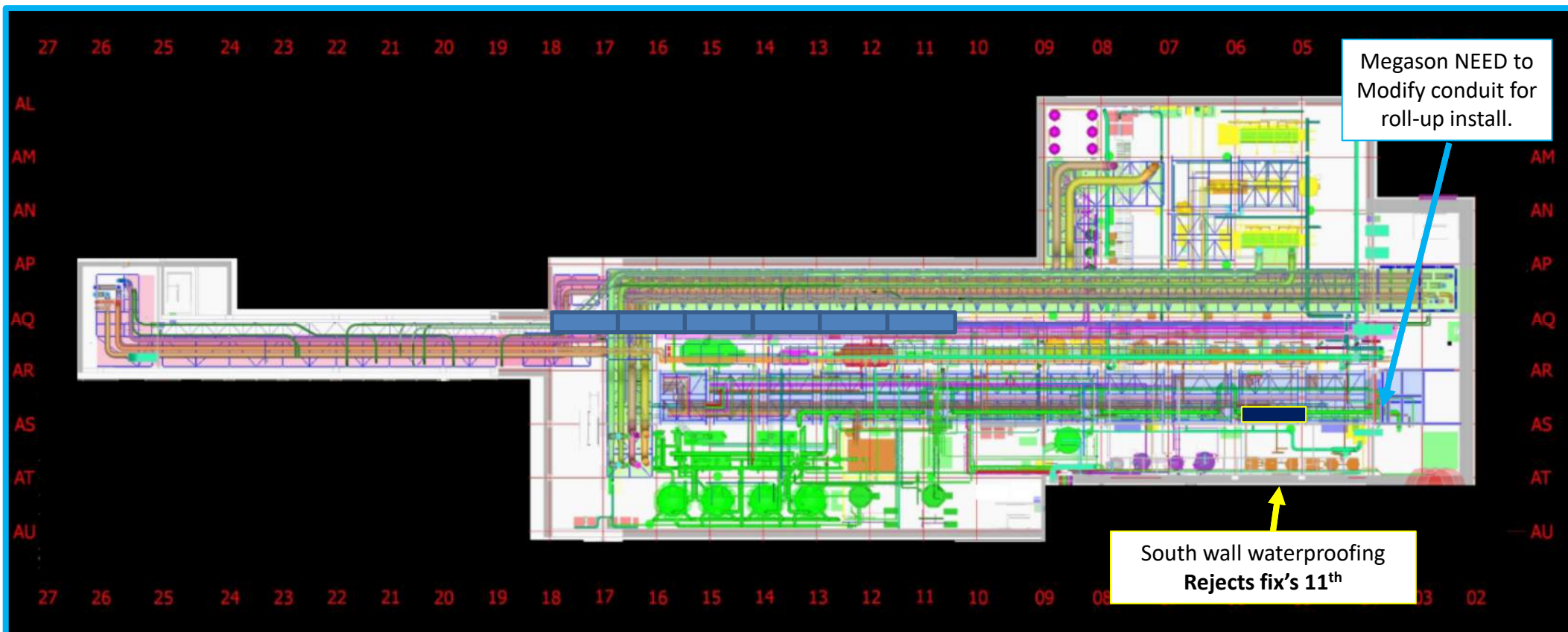


SamiN
TTNW WC'S
pressure test
ongoing

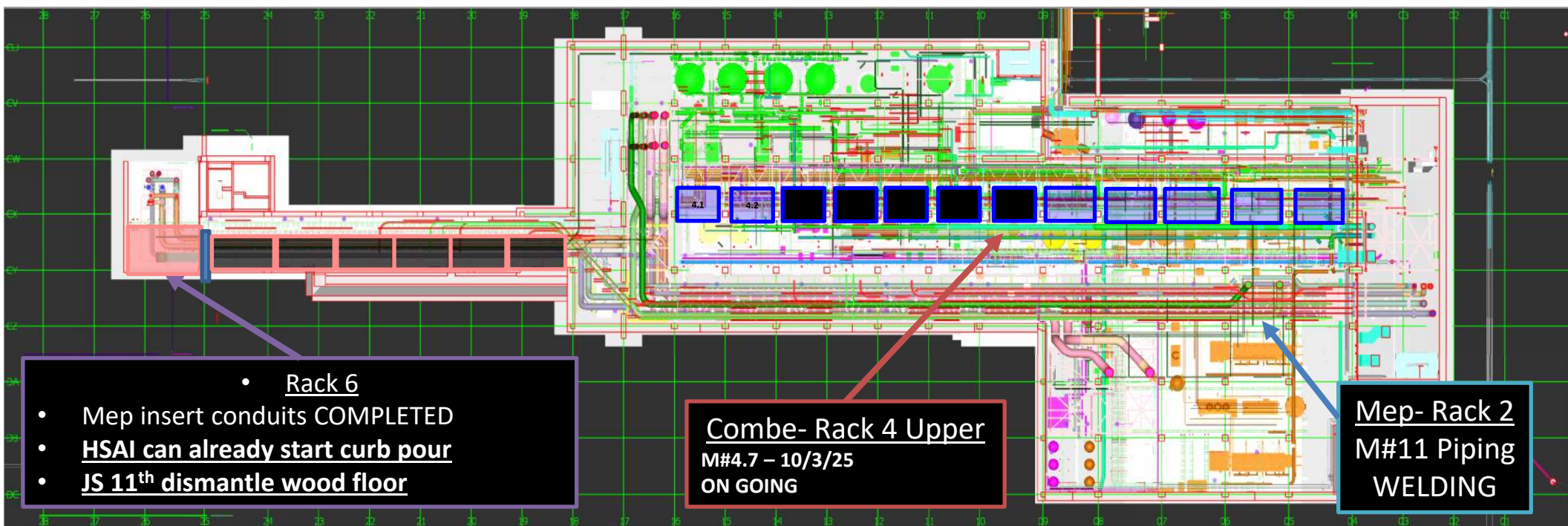
CARMEL DUCT
Remove duct for RHS install
Till 3/11

HYG
Install RHS
3/10

SUT 38.1 LEVEL



SUT 38.2 LEVEL

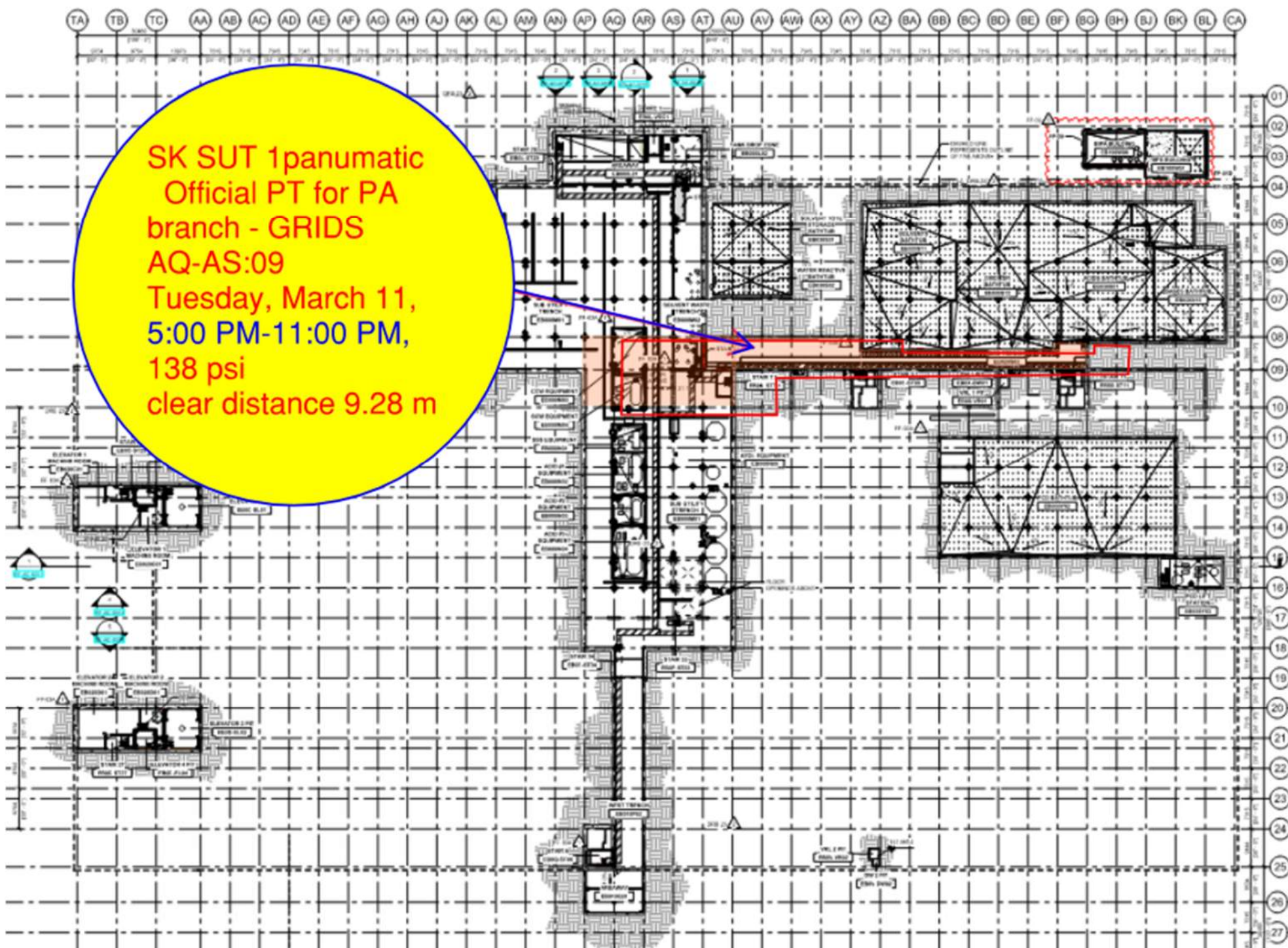


Slide 9

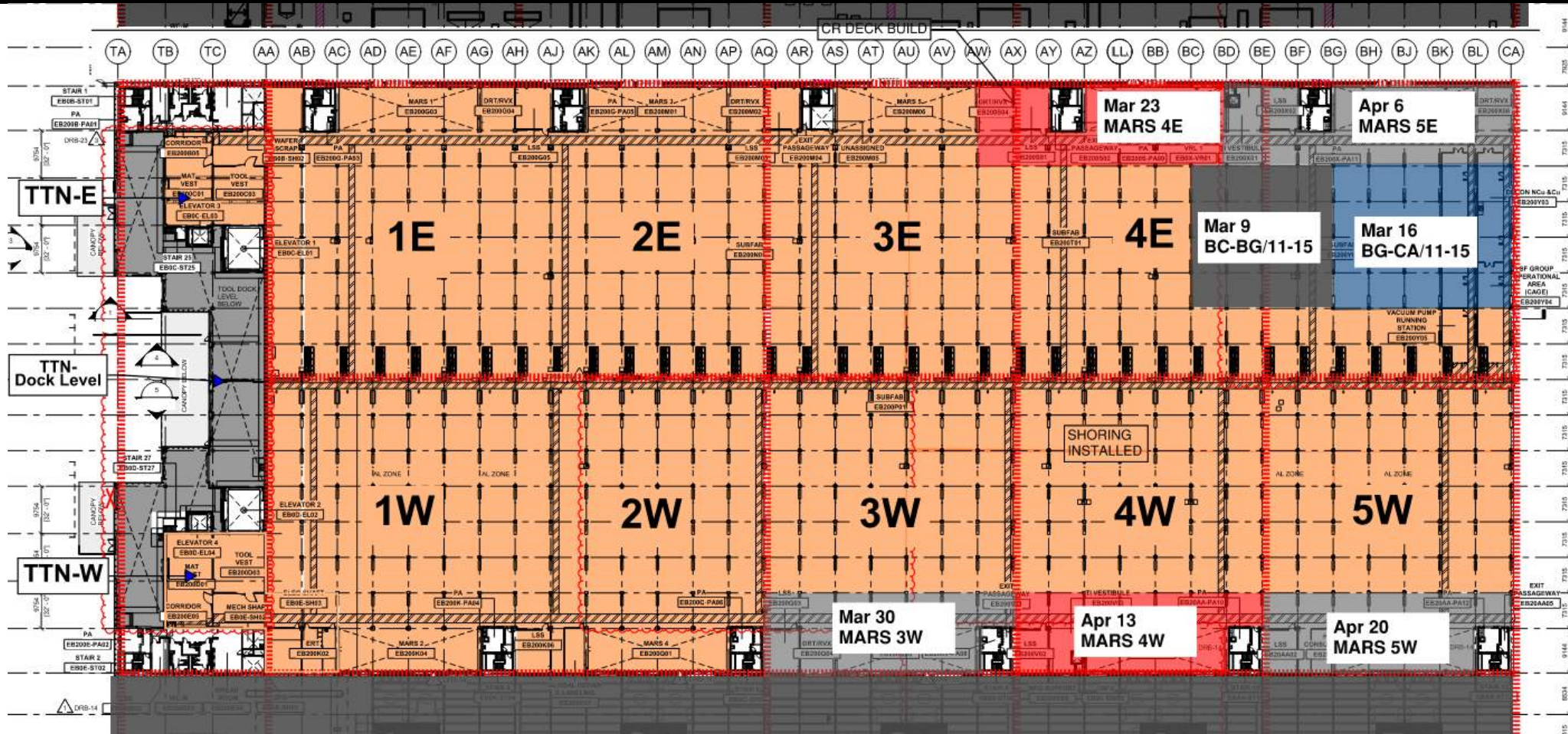
IK2

Ibrahim Krinawi, 3/5/2025

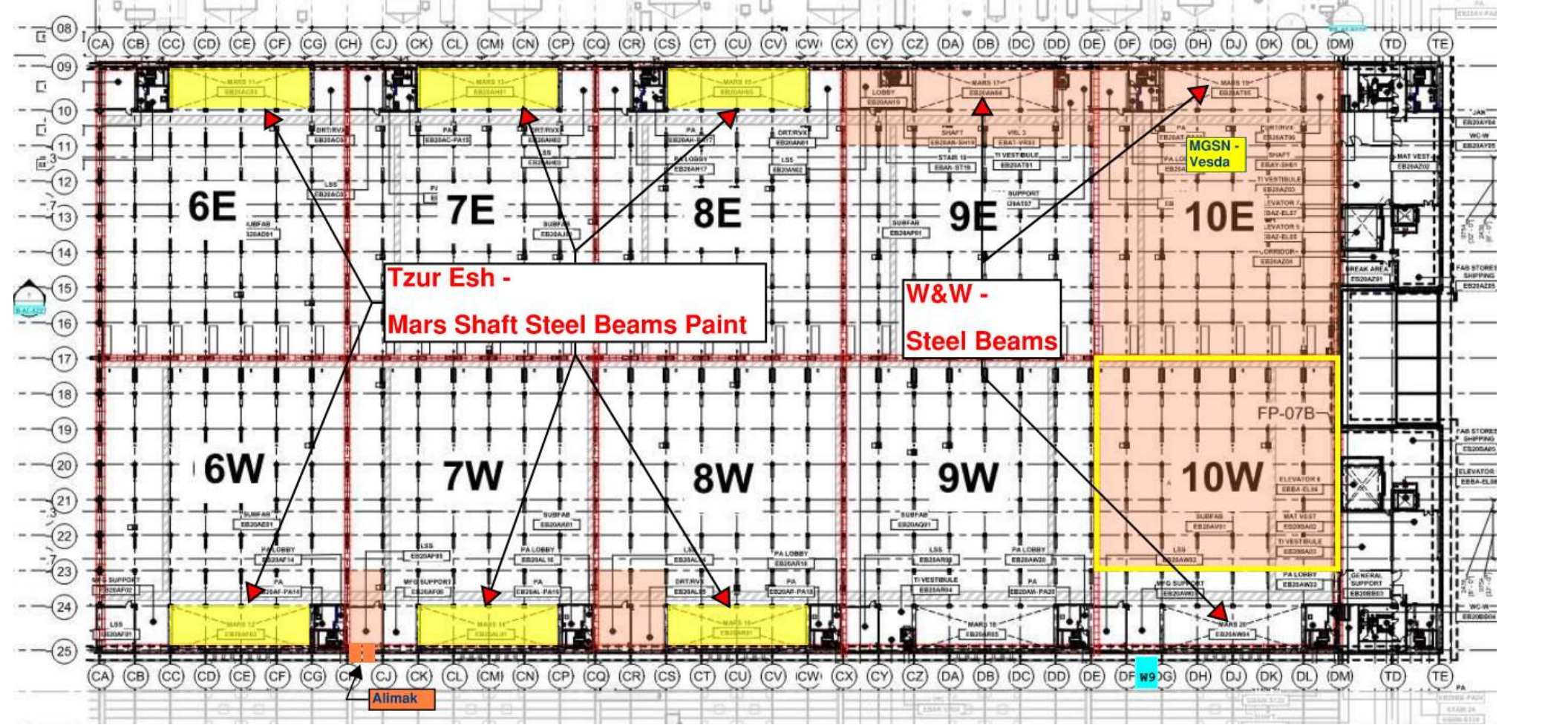
SK SUT 1 panumatic
Official PT for PA
branch - GRIDS
AQ-AS:09
Tuesday, March 11,
5:00 PM-11:00 PM,
138 psi
clear distance 9.28 m

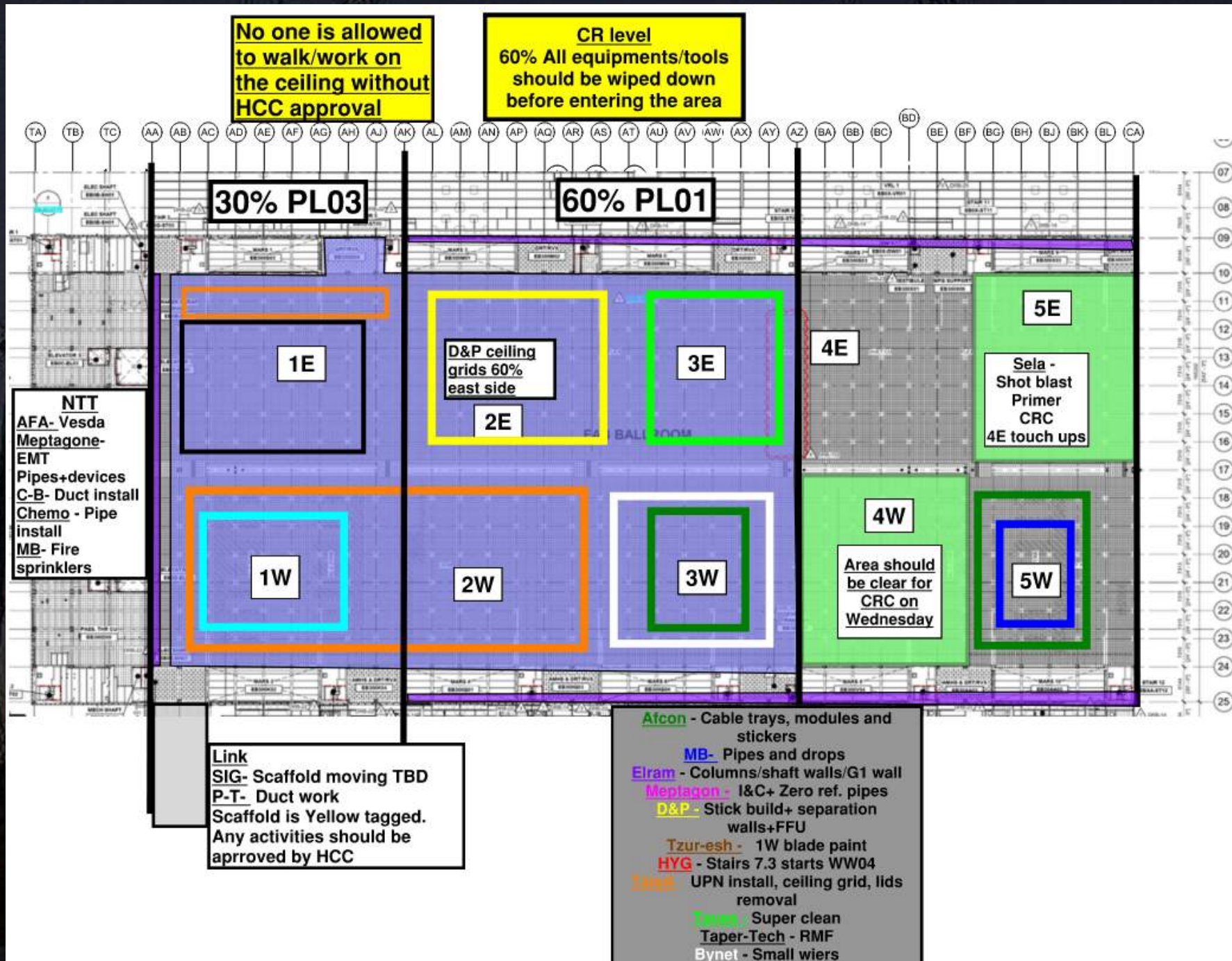


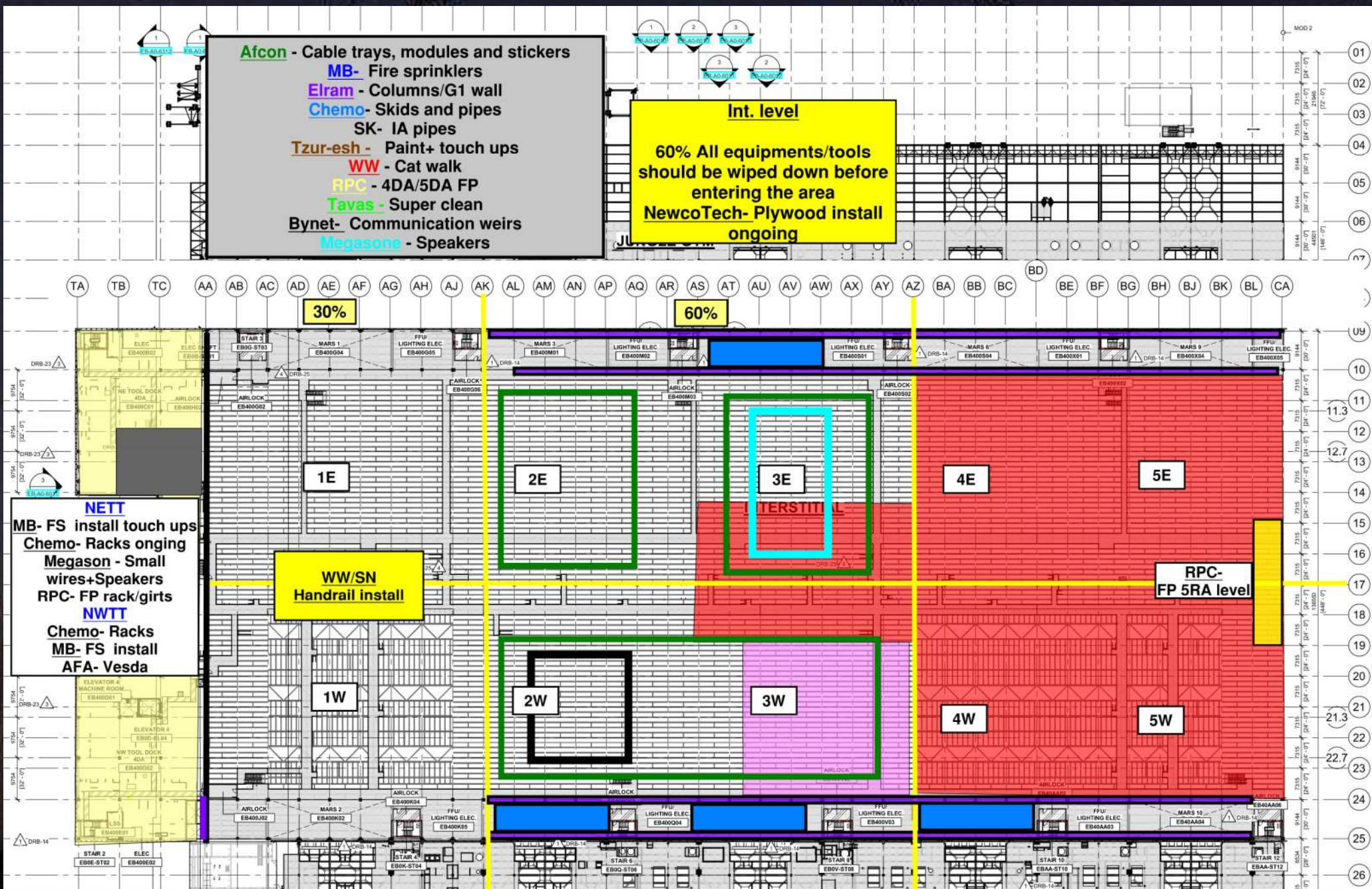
SUBFAB CRC TOPCOAT

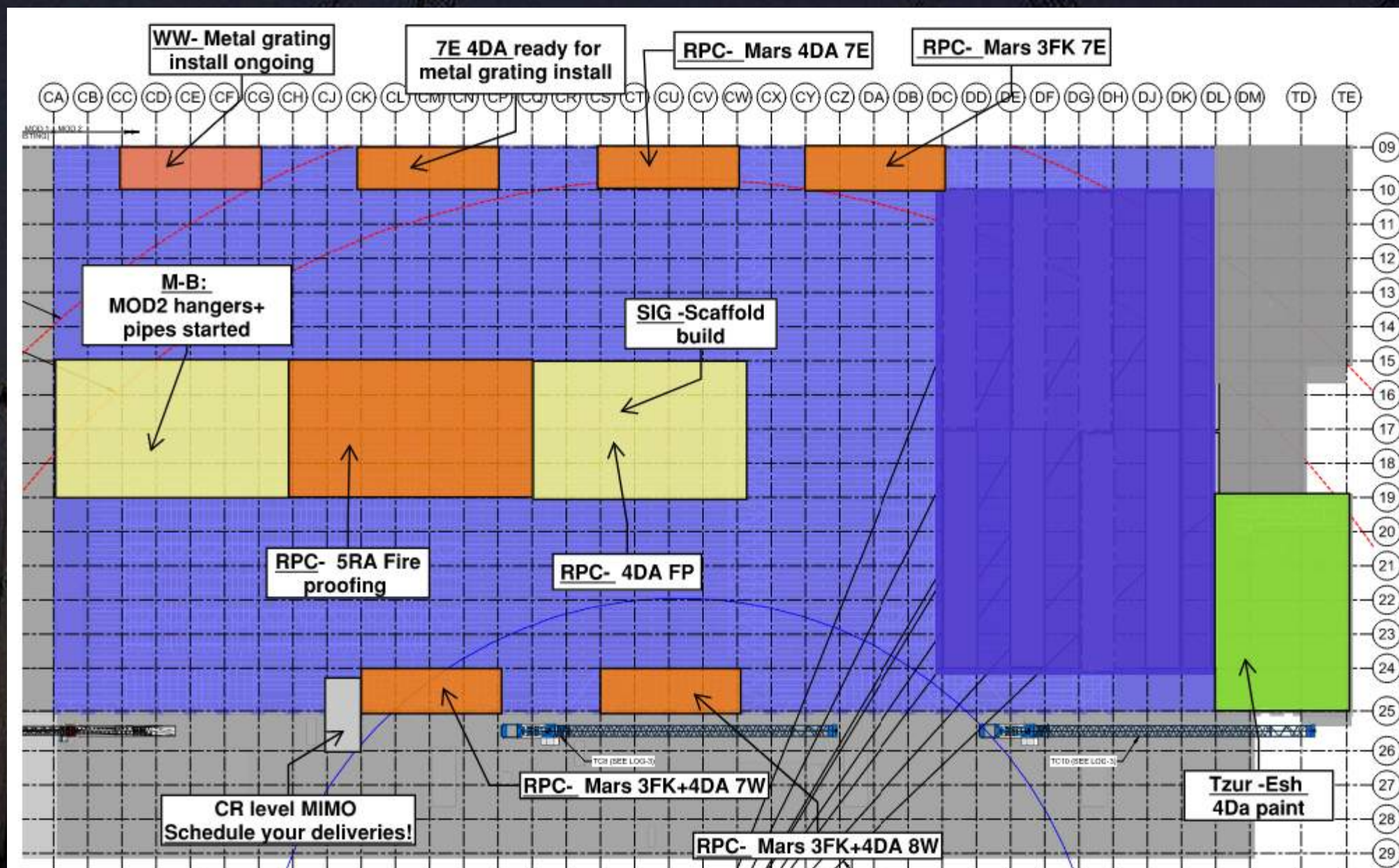


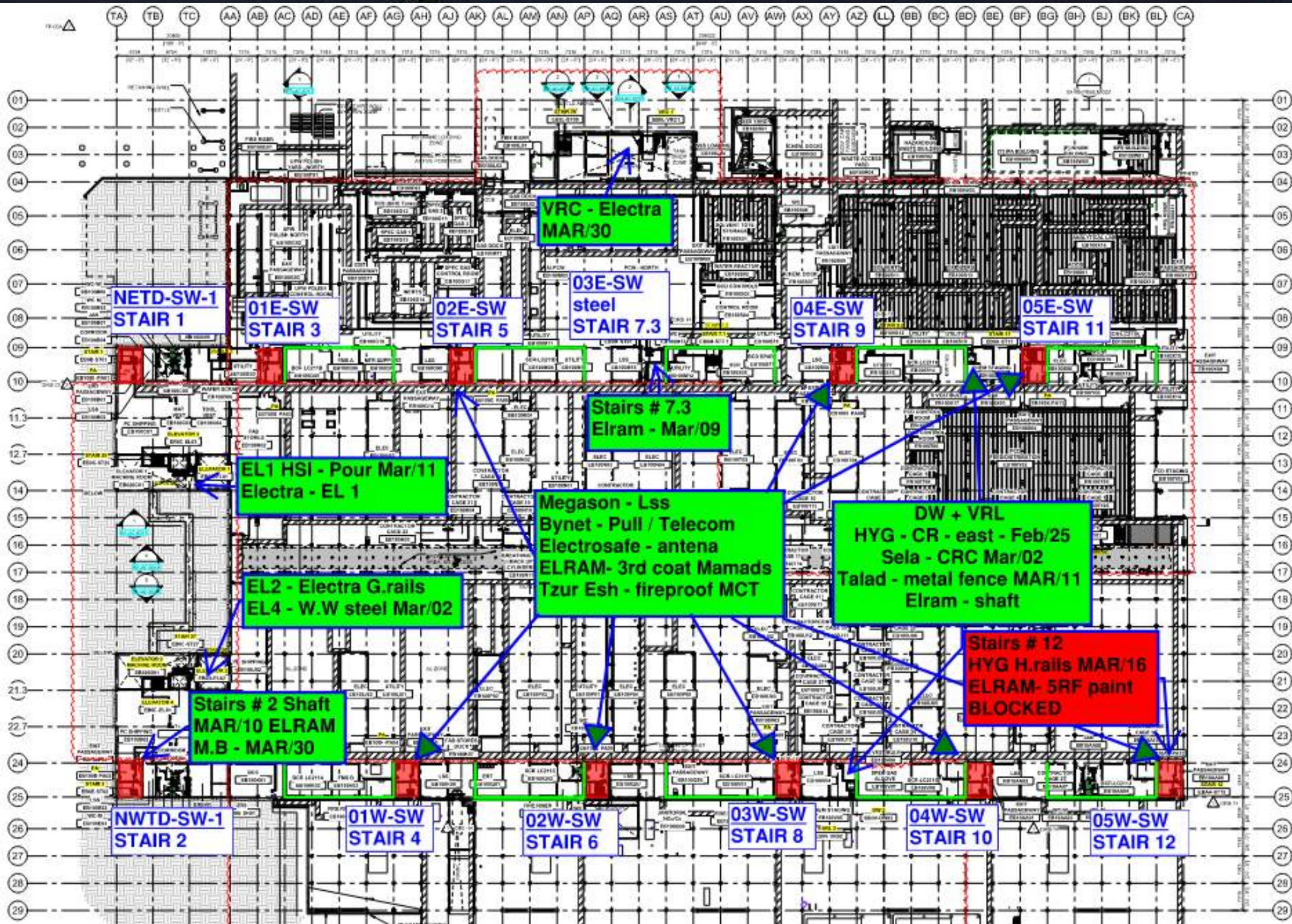
SUBFAB BUILDOUT MOD2



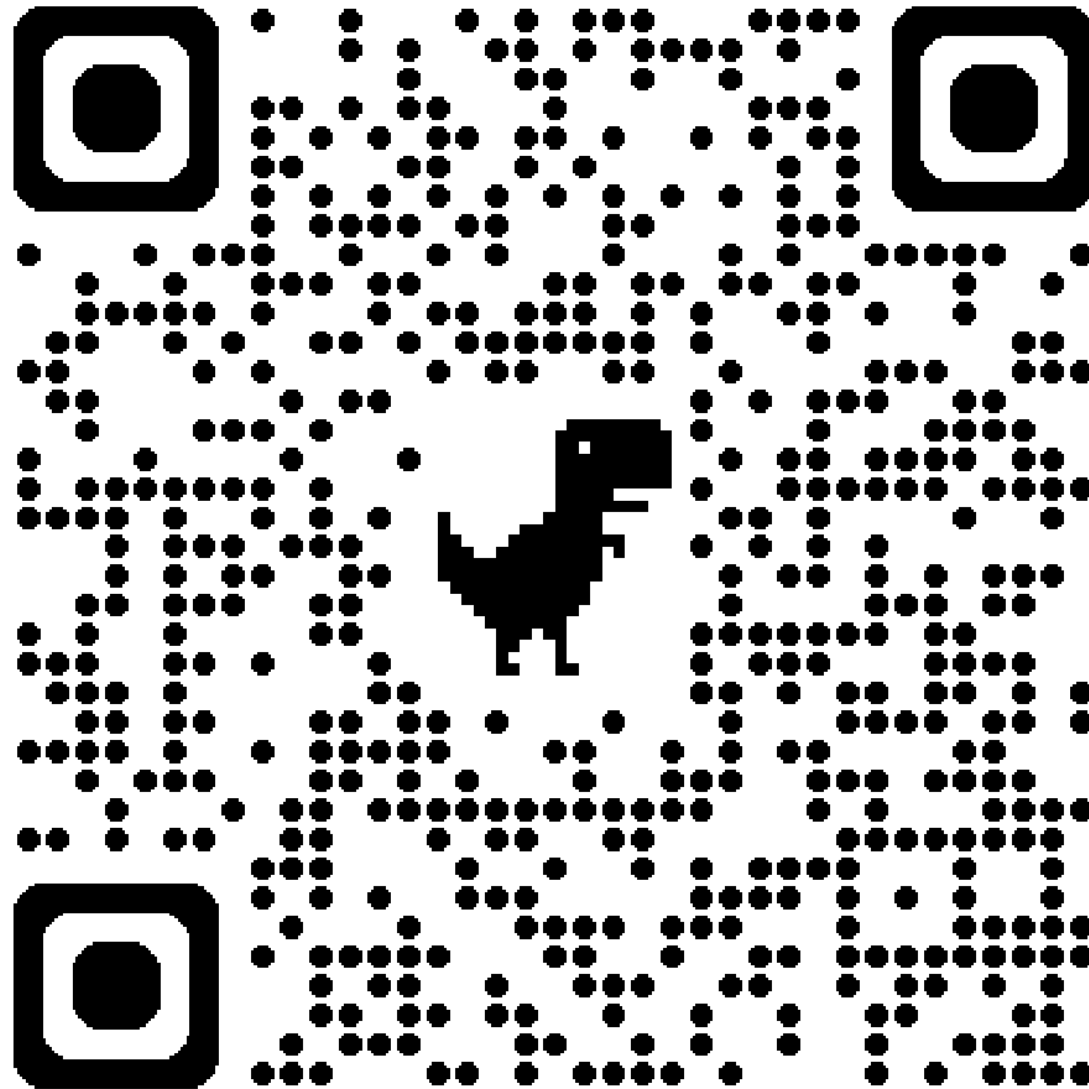




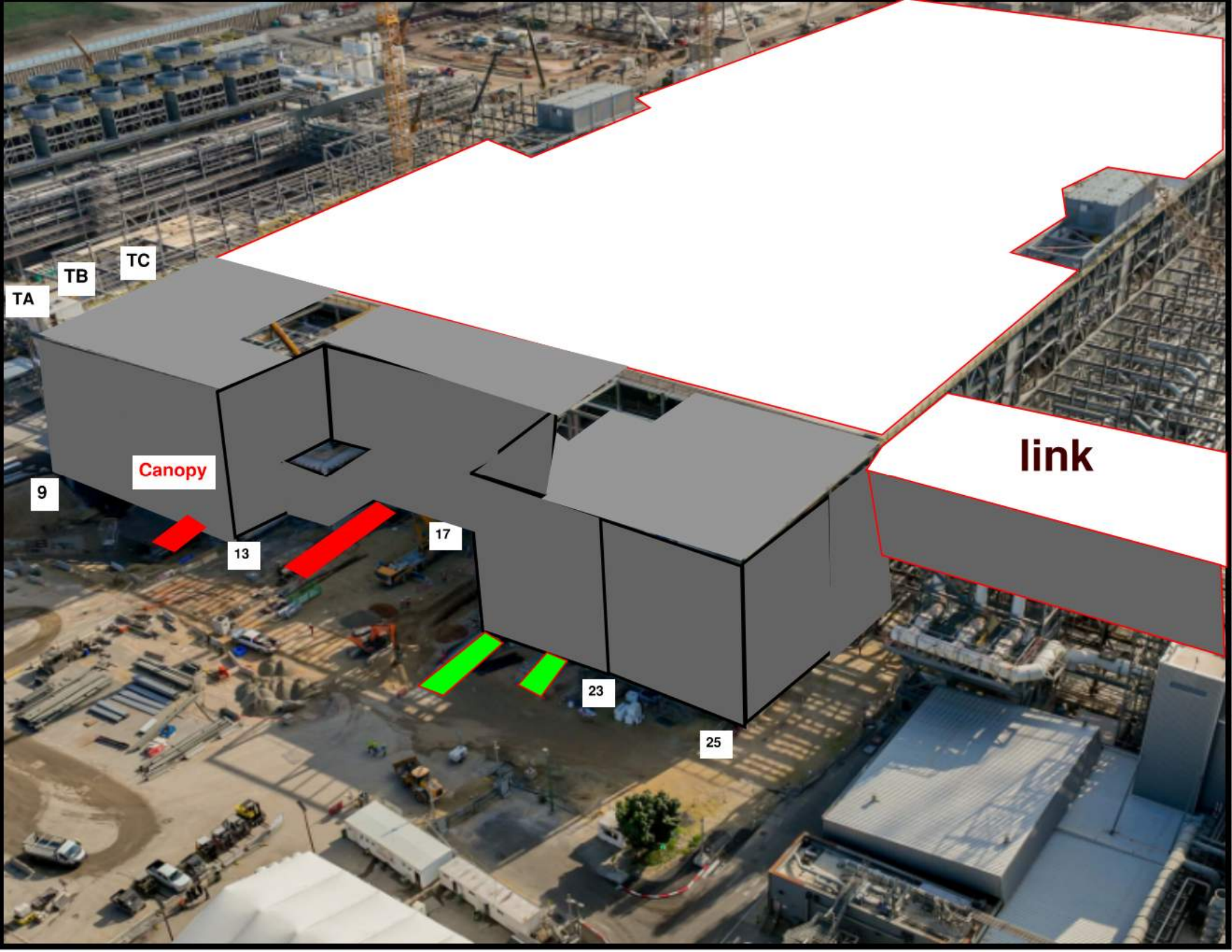




Siding Penetration Request Form



Subcontractor must fill out and submit all required cells in order to get a penetration cut through the siding.



TA

TB

TC

Canopy

link

9

13

17

23

25



MOD 2 EASTSIDE GIRTS/SIDING

2752/ 2751	2742/ 2741	2732/ 2731	2722/ 2721	2712/ 2711	2552/ 2551	2542/ 2541	2532/ 2531	2522/ 2521	2512/ 2511	2502/ 2501

READY FOR GIRTS	
INSTALLING GIRTS	
READY FOR PANELS	
PANELS INSTALLED	

MOD 2 WESTSIDE GIRTS/SIDING

READY FOR GIRTS 

INSTALLING GIRTS 

READY FOR PANELS 

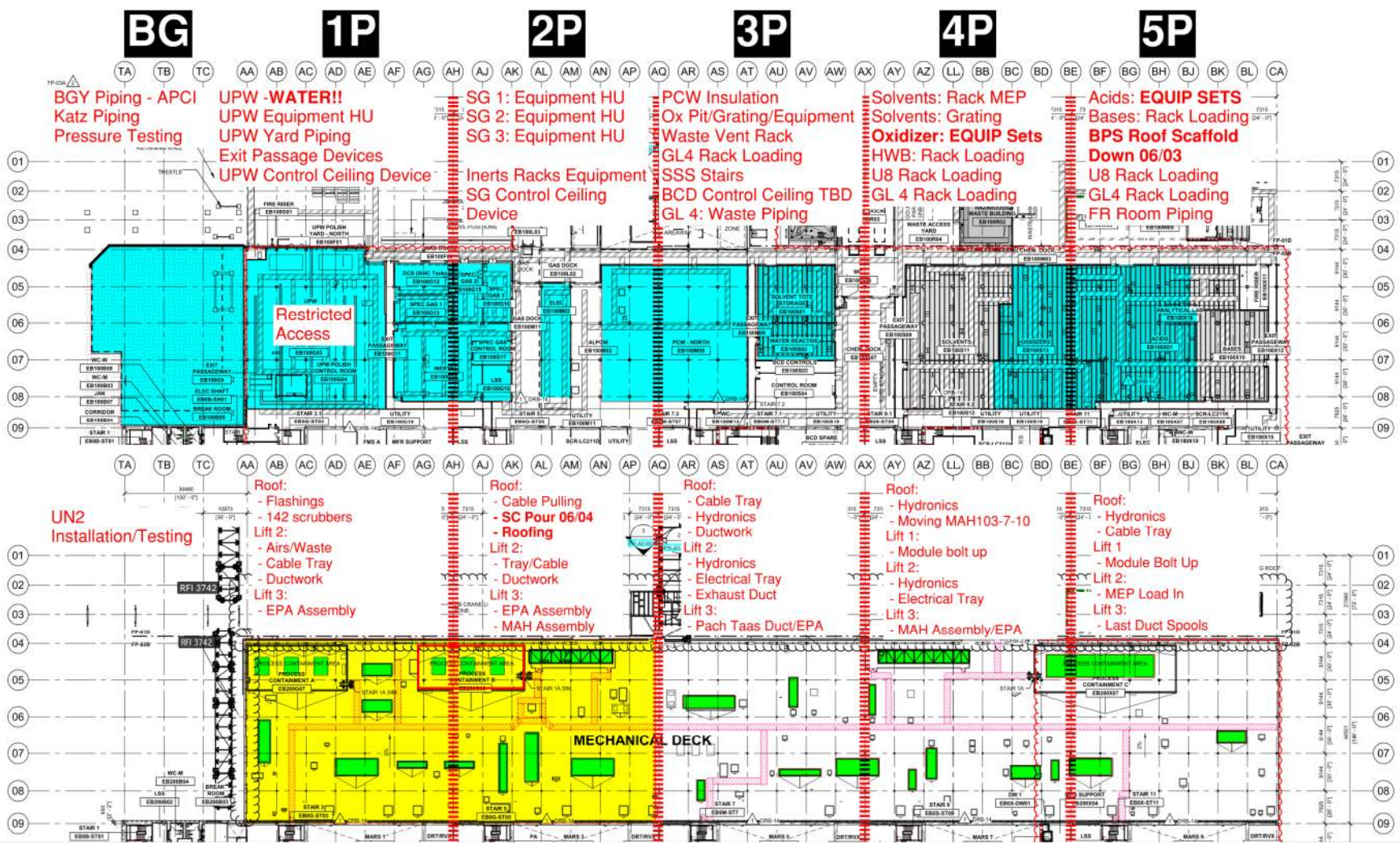
PANELS INSTALLED 



PSSS.1

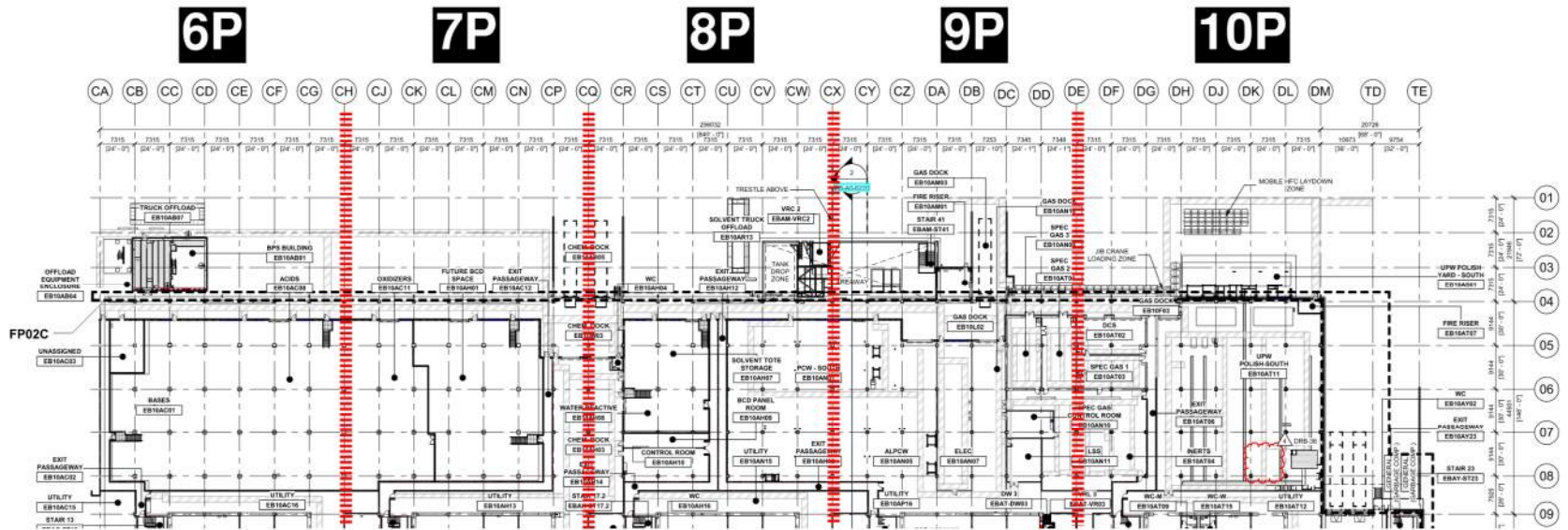
Utility Level
1YA

PSSS Roof
2SA

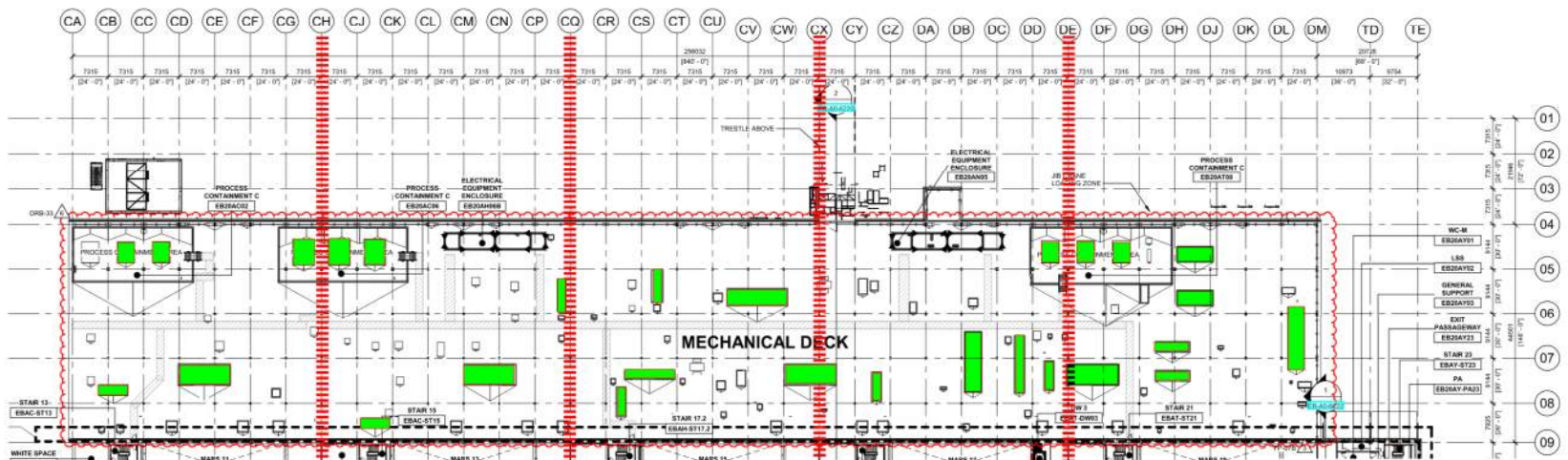


PSSS.2

Utility Level 1YA



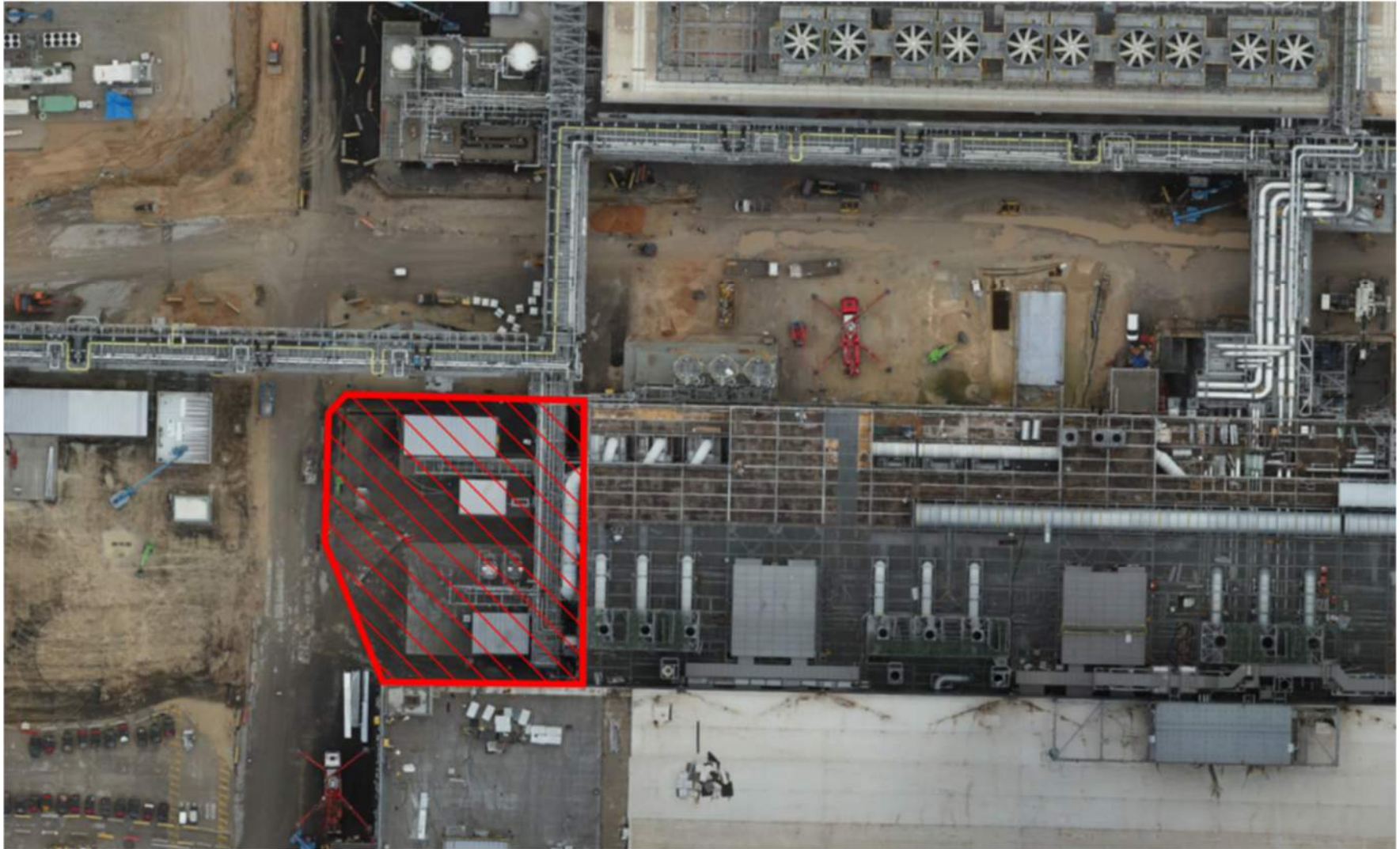
PSSS Roof
2SA



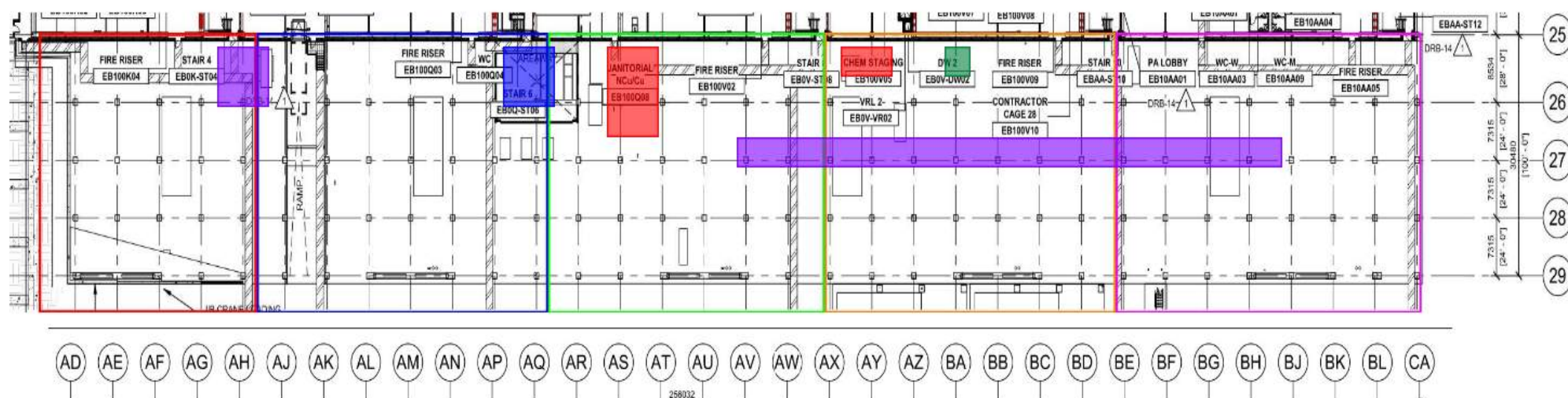
PSSS Pressure Testing



BGY Closed WW11 For UN2 Blowdown



* Carmel Bidud - installation of ducts from small AH to FAB	*Pach Taas - installation of modules in west SUT.	* Megason - working on LSS	* W&W - welding of shims for outriggers * MB - installation of FP pipes to lift 3	* Chemo - performing passivation on UPN 117
---	---	----------------------------	--	---





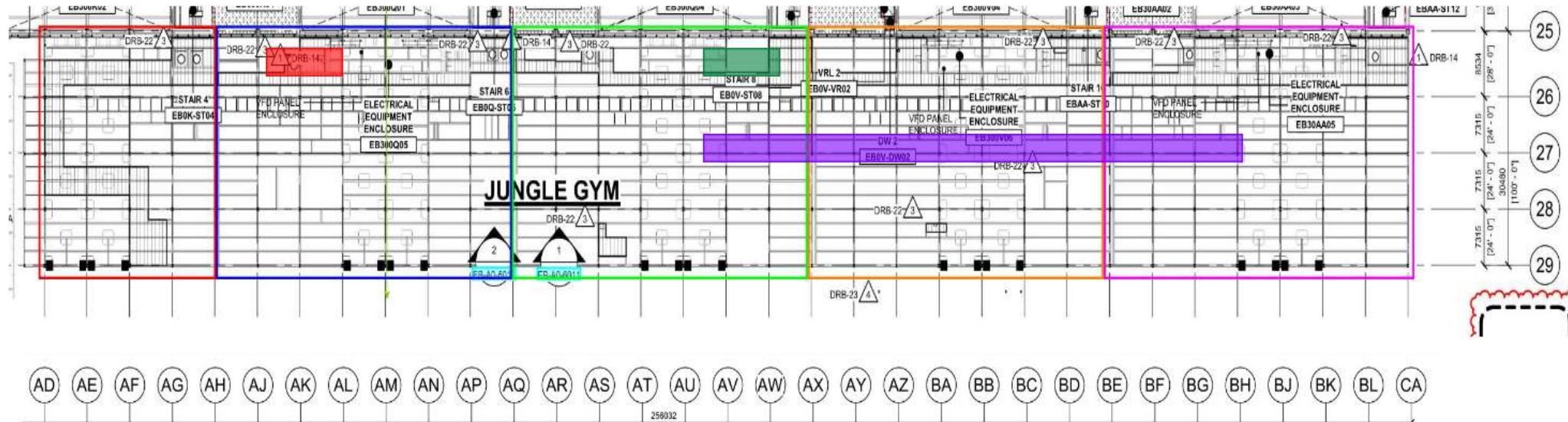
WJG – Lift 2

* Chemo - connecting the Nalco skid for washing and preparing MARS pipes of 2J for preasure test

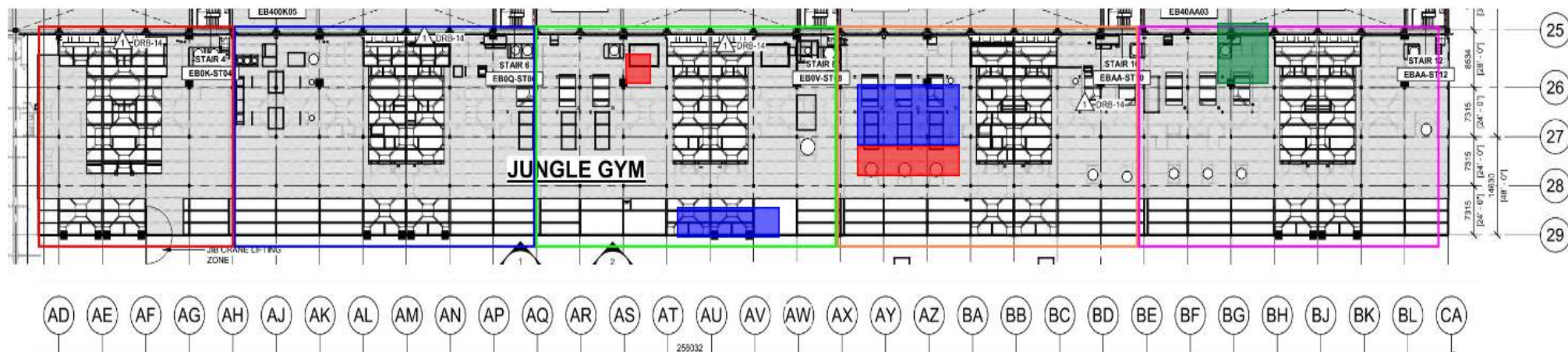
* Pach Taas -connection to single stack to exhaust fans

* 4J MAH scaffold was dismantled

* Chemo - performing passivation on UPN 117



		<ul style="list-style-type: none"> * Pach Taas - hoisting and installing 3400 module * SN removing, cutting gratings and welding supports 	<ul style="list-style-type: none"> * SN removing, cutting gratings and welding supports * Pach Taas - hoisting and installing plates for fans 	<ul style="list-style-type: none"> * Chemo - installation of MARS pipes
--	--	---	---	--





Crane logistics

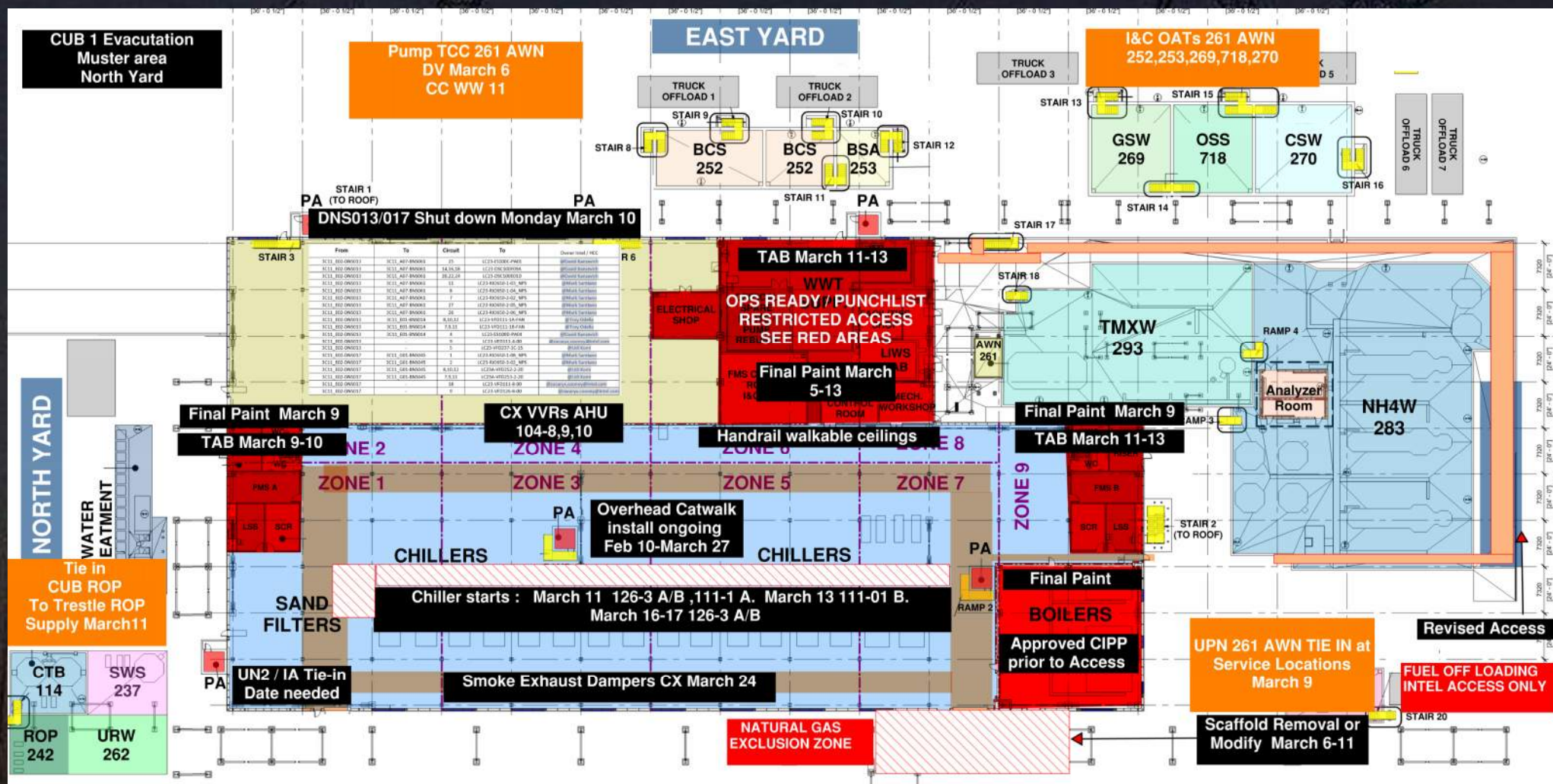
truck crane
located at AG-AH (per
Sub request and smart
sheet request)

Crane: 750 ton crane
located at AV-AW (Pach
Taas equipment set)

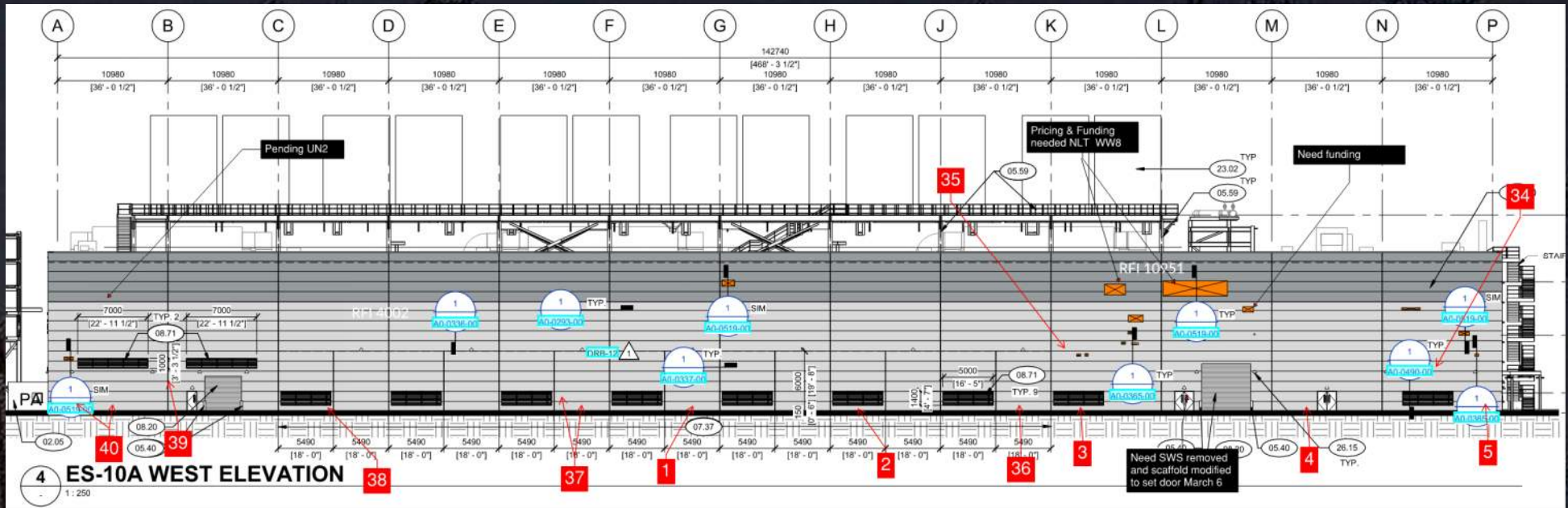




CUB 1

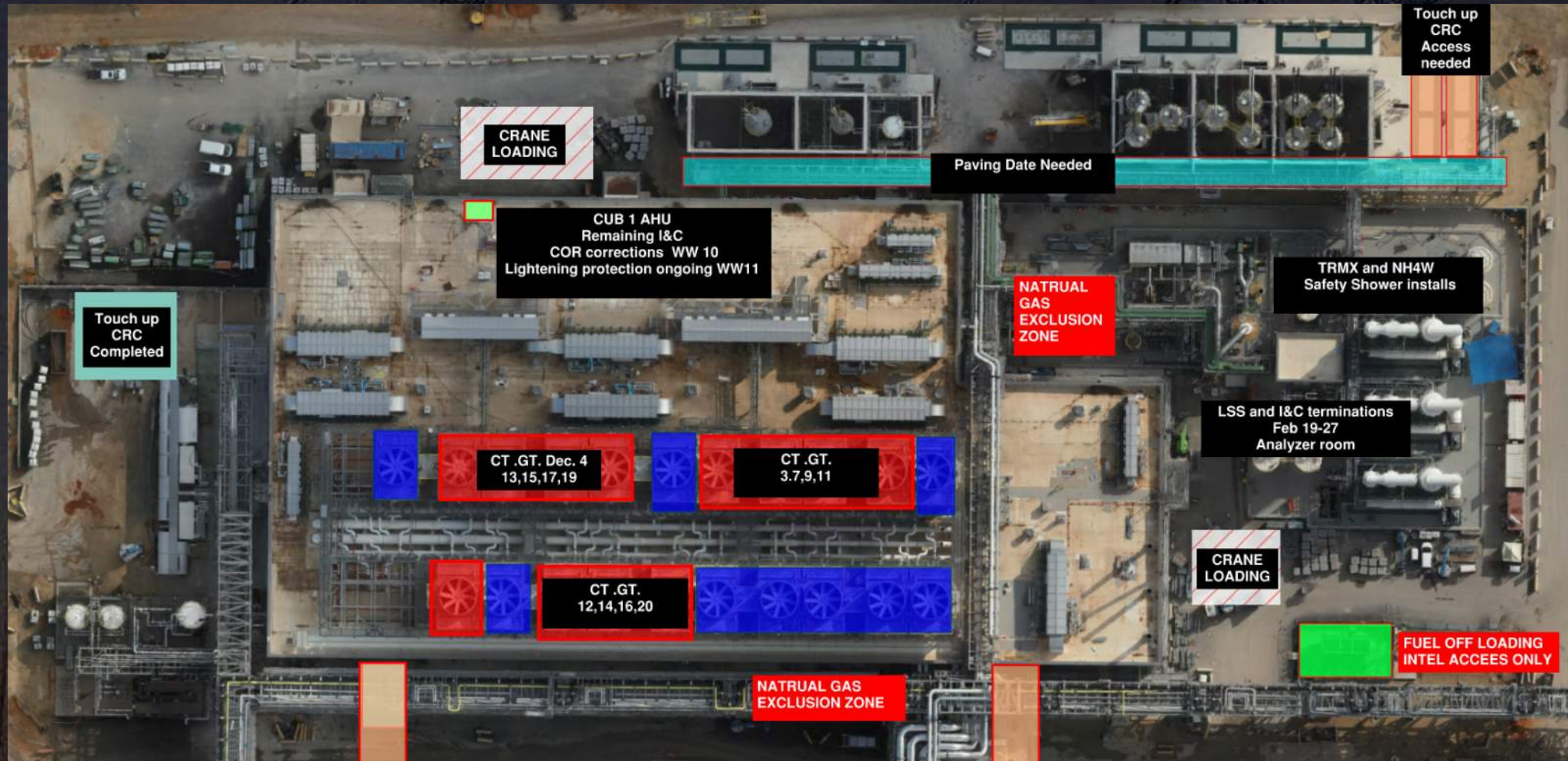


CUB 1 West Wall coordination /Trestle/Site

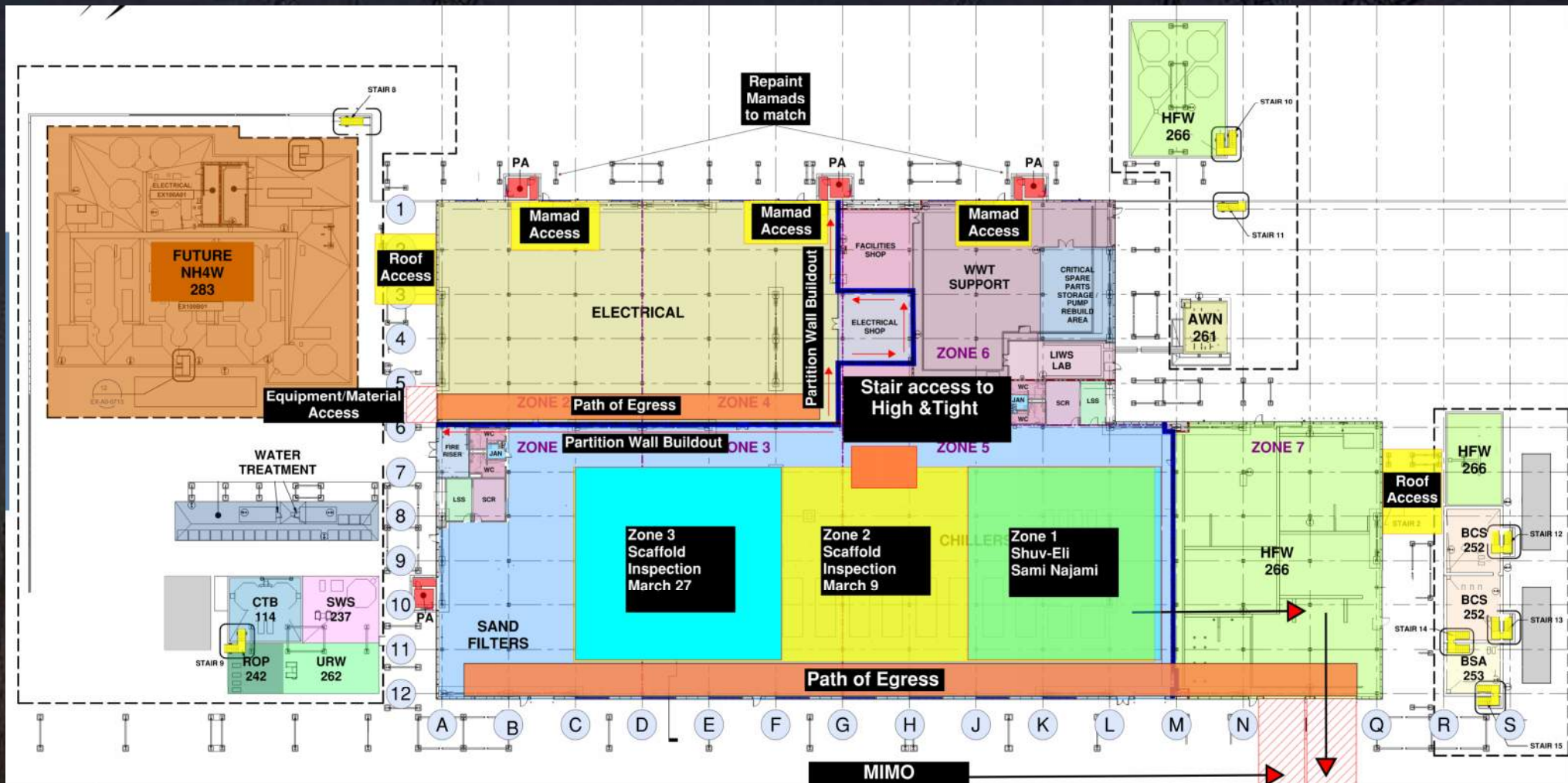


- Waste Systems Pressure Testing Wrap up 3d March 4-5
- Trestle Scaffold removal 5d March 6-11
- Metal flashings and Panel work Man Door 5-7d March 12-20
- Claim Envelope ready for DVs March 20
- DV acceptance list and corrections 7d April 2
- Ops Ready April 3
- Concrete removal Site Grading Form rebar pour concrete 5-7 d March 23-March 31
- Bullards 2d April 1-2

CUB 1 – EXTERIOR/ROOF

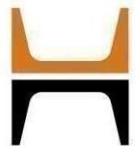


CUB 2- Load in ,H&T, Framing and Sheetrock



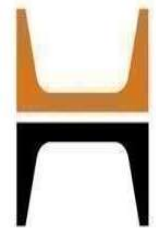
CUB 2 – EXTERIOR/ROOF





HOFFMAN CONSTRUCTION COMPANY

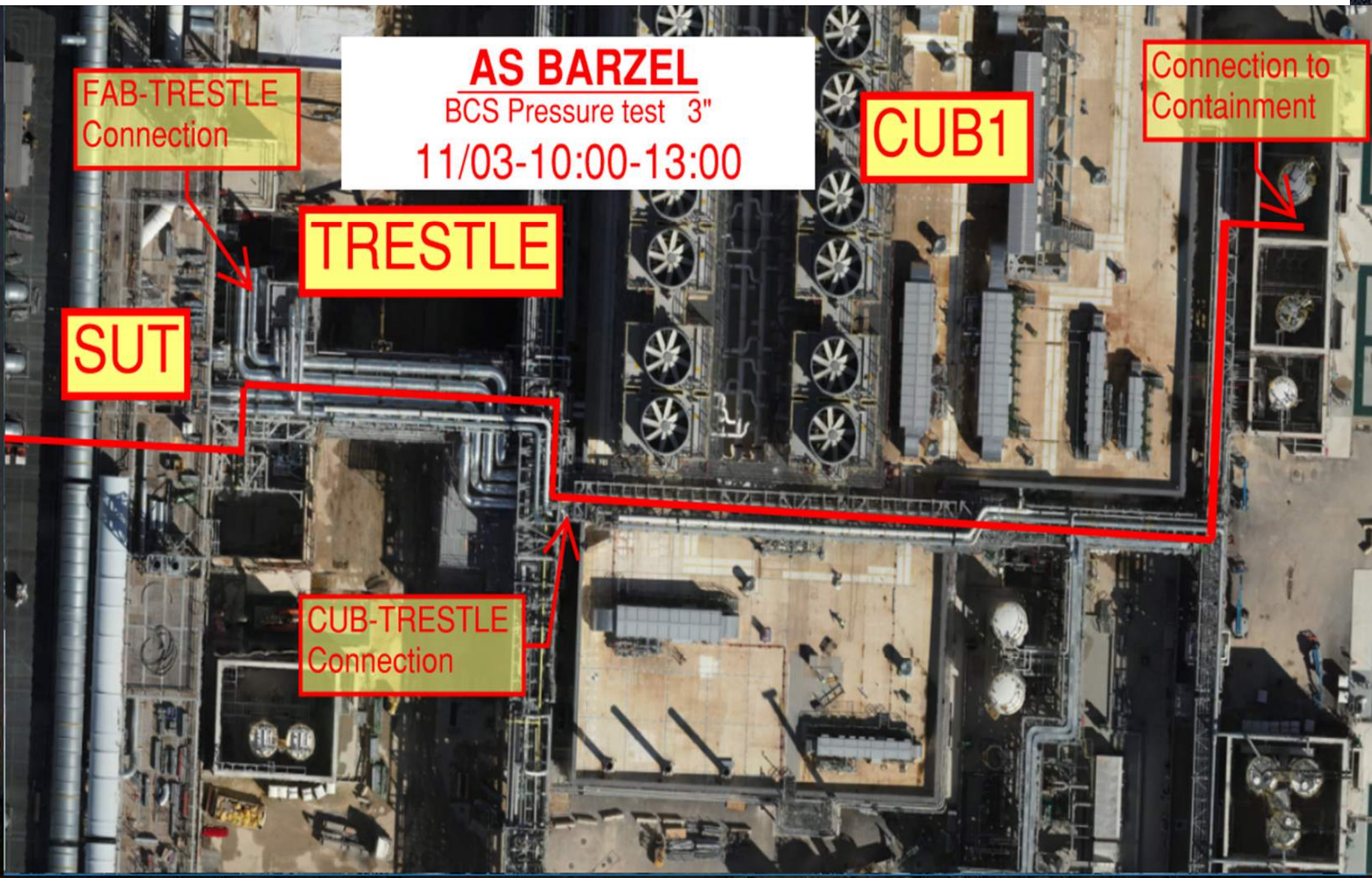




HOFFMAN CONSTRUCTION COMPANY



HOFFMAN
Sparrow  



FAB-TRESTLE
Connection

AS BARZEL

BCS Pressure test 3"

11/03-10:00-13:00

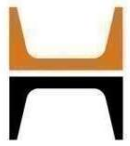
CUB1

Connection to
Containment

TRESTLE

SUT

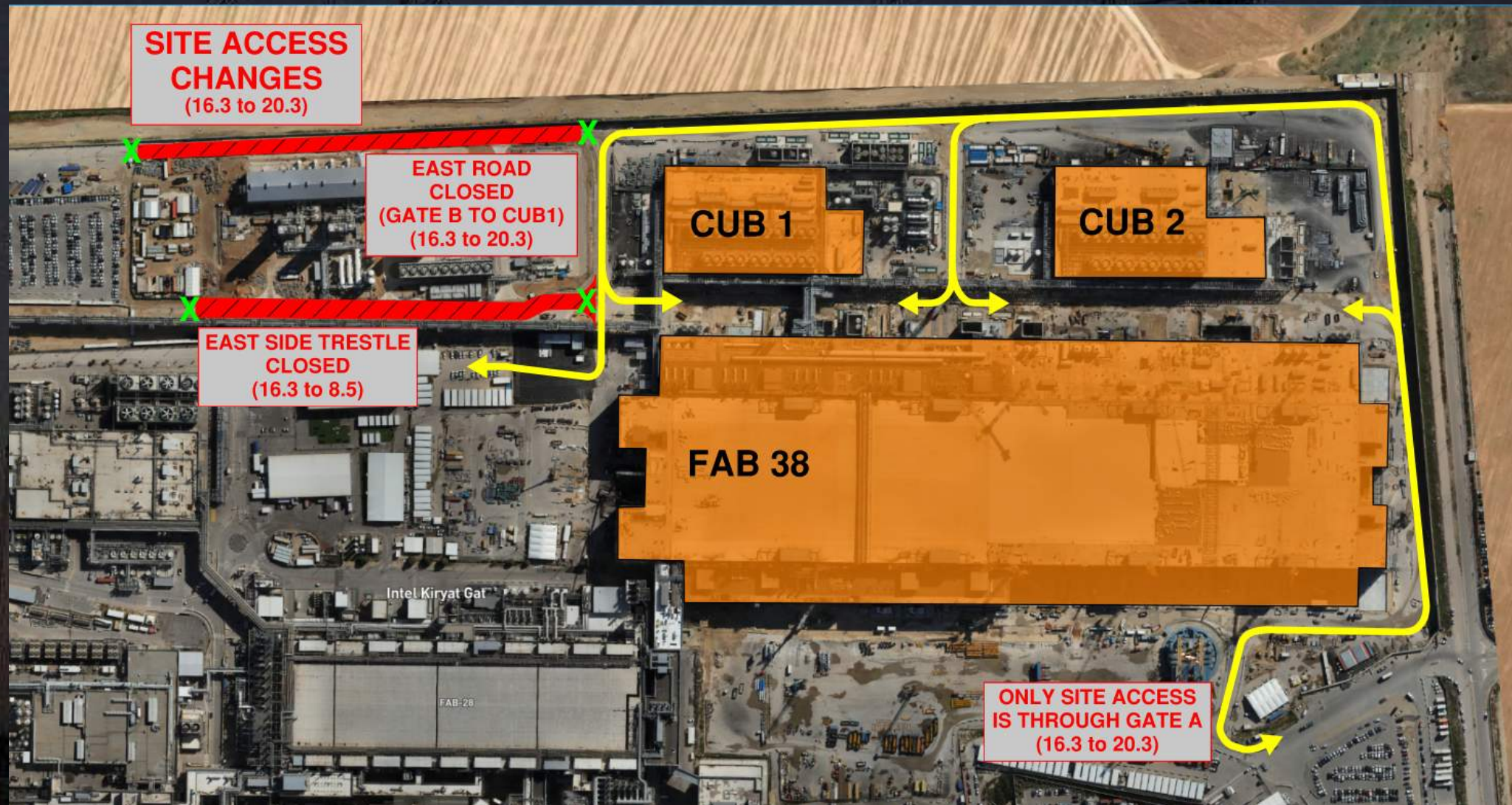
CUB-TRESTLE
Connection

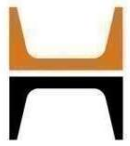


Daily Coordination Meeting

Site Logistics

North



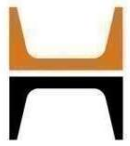


Daily Coordination Meeting

Site Logistics

North





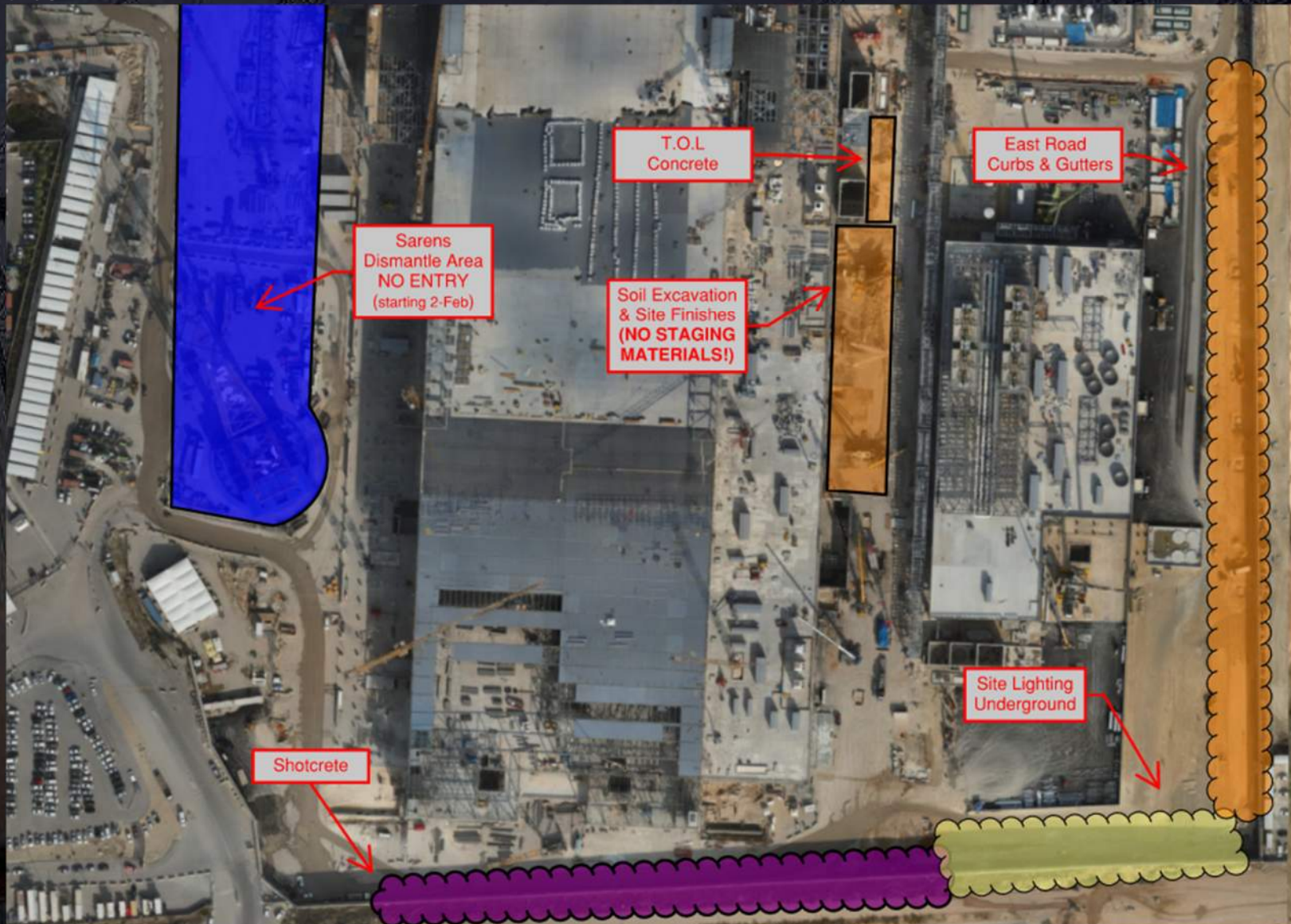
HOFFMAN CONSTRUCTION COMPANY



Daily Coordination Meeting

Site Logistics

South



Things to Ensure Before Starting Work on a potentially Active System Requiring LOTO:

1. Training and Authorization

Ensure only trained and authorized personnel perform and involve the work.

2. Clear Communication

Ensure all team members are informed about how to do and why.

3. Obtain Permits

Secure necessary work permits.

4. Identify Energy Sources

Confirm all energy sources are identified and isolated (LOTO).

5. Verify LOTO Procedure

Ensure proper LOTO procedure is in place.

6. Lock the Energy Source

It is critical to lock out all energy sources to prevent accidental release of energy during the work.

7. De-energize Equipment

Test to ensure the system is fully de-energized.

8. Check Lockout Devices

Verify proper lockout devices and tags are used.

9. Ensure Work Area Safety

Confirm work area is safe and risks are understood.

Daily Coordination Meeting



14:00 Sign In