

Daily Coordination Meeting

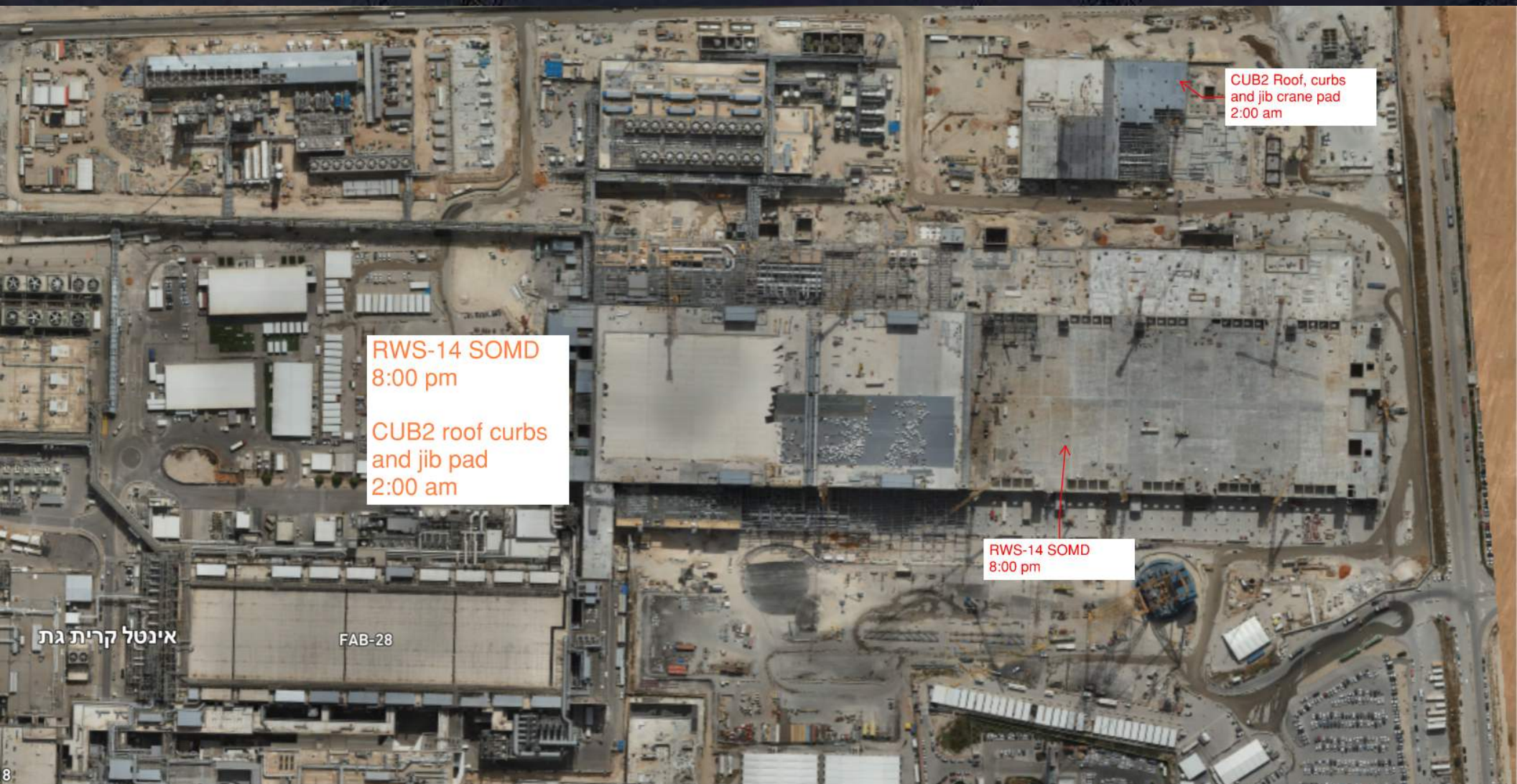


14:00 Sign In

Daily Coordination Meeting

General Topics:

- Ask the Question



CUB2 Roof, curbs
and jib crane pad
2:00 am

RWS-14 SOMD
8:00 pm

CUB2 roof curbs
and jib pad
2:00 am

RWS-14 SOMD
8:00 pm

אינטל קרית גת

FAB-28



Room Ready

BCR & SCR Operational Readiness Tracker

BCR 1E

BCR 1W

Starting to Close and change locks for cleaning beginning on 20th of November

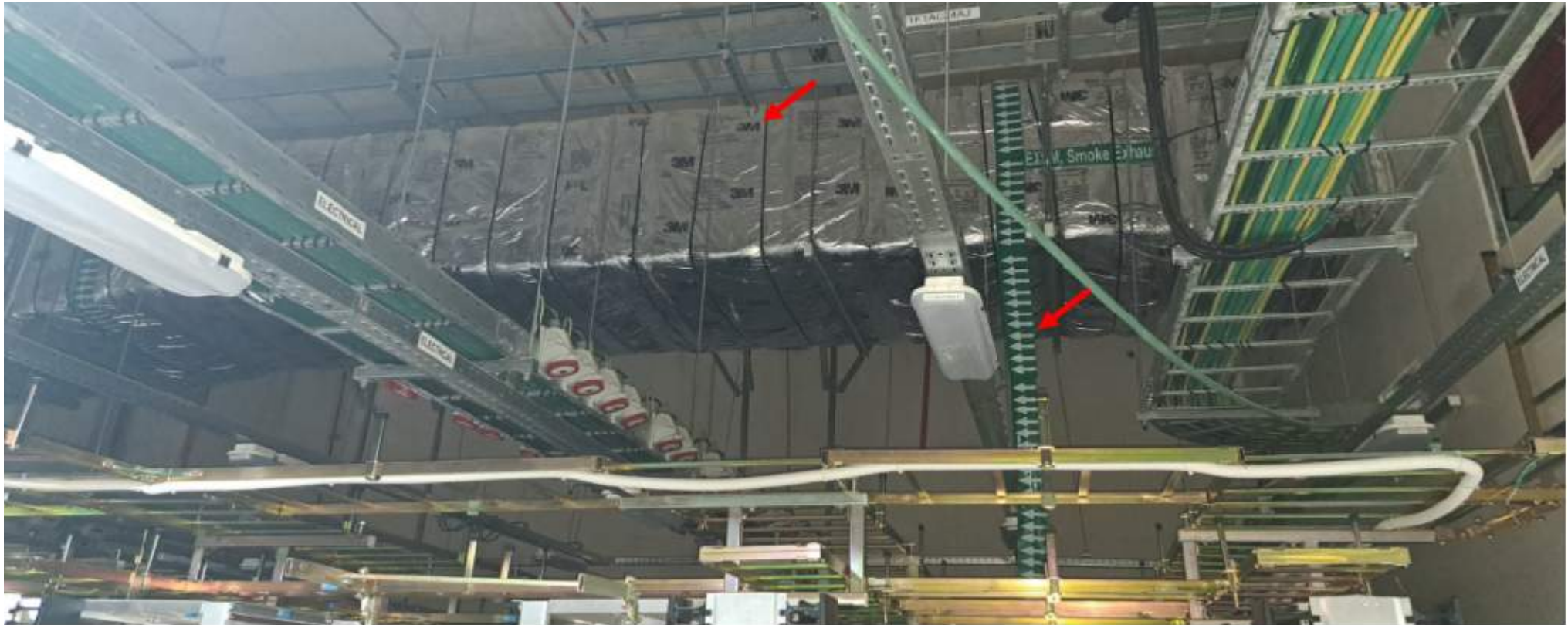


HOFFMAN CONSTRUCTION COMPANY



UTILITY LEVEL MOD1

Room Ready





HOFFMAN CONSTRUCTION COMPANY



UTILITY LEVEL MOD1

Room Ready



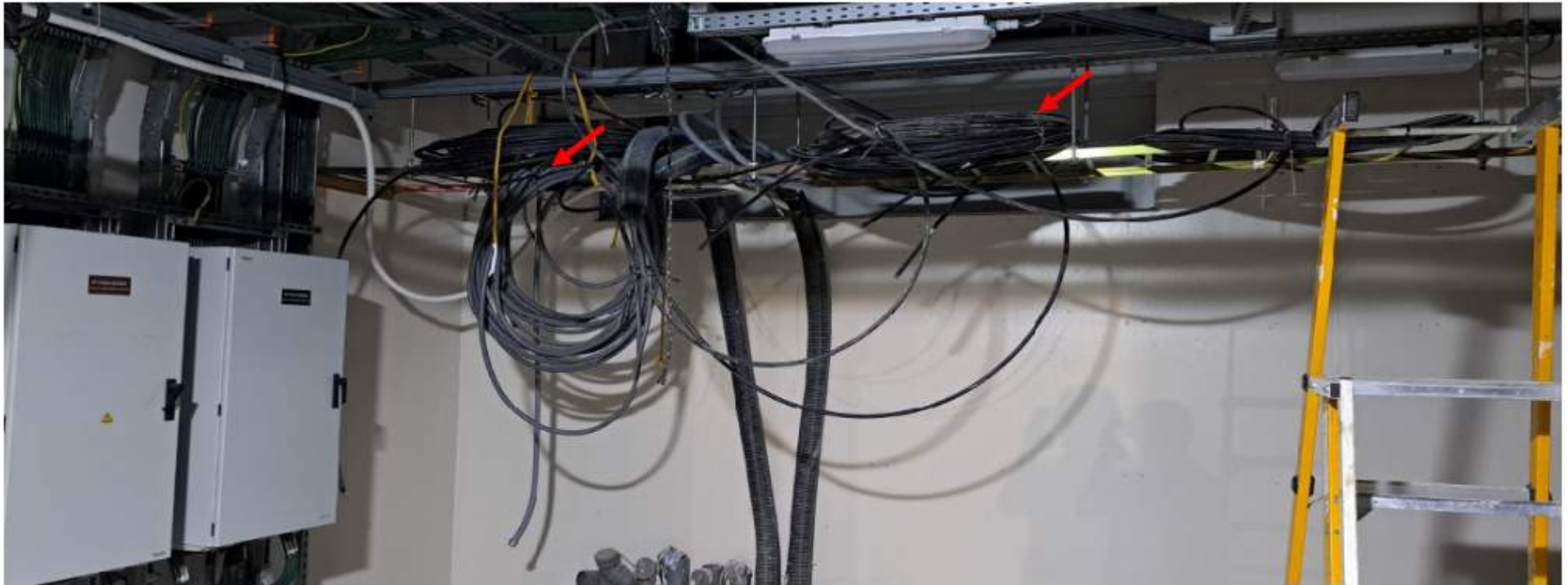


HOFFMAN CONSTRUCTION COMPANY



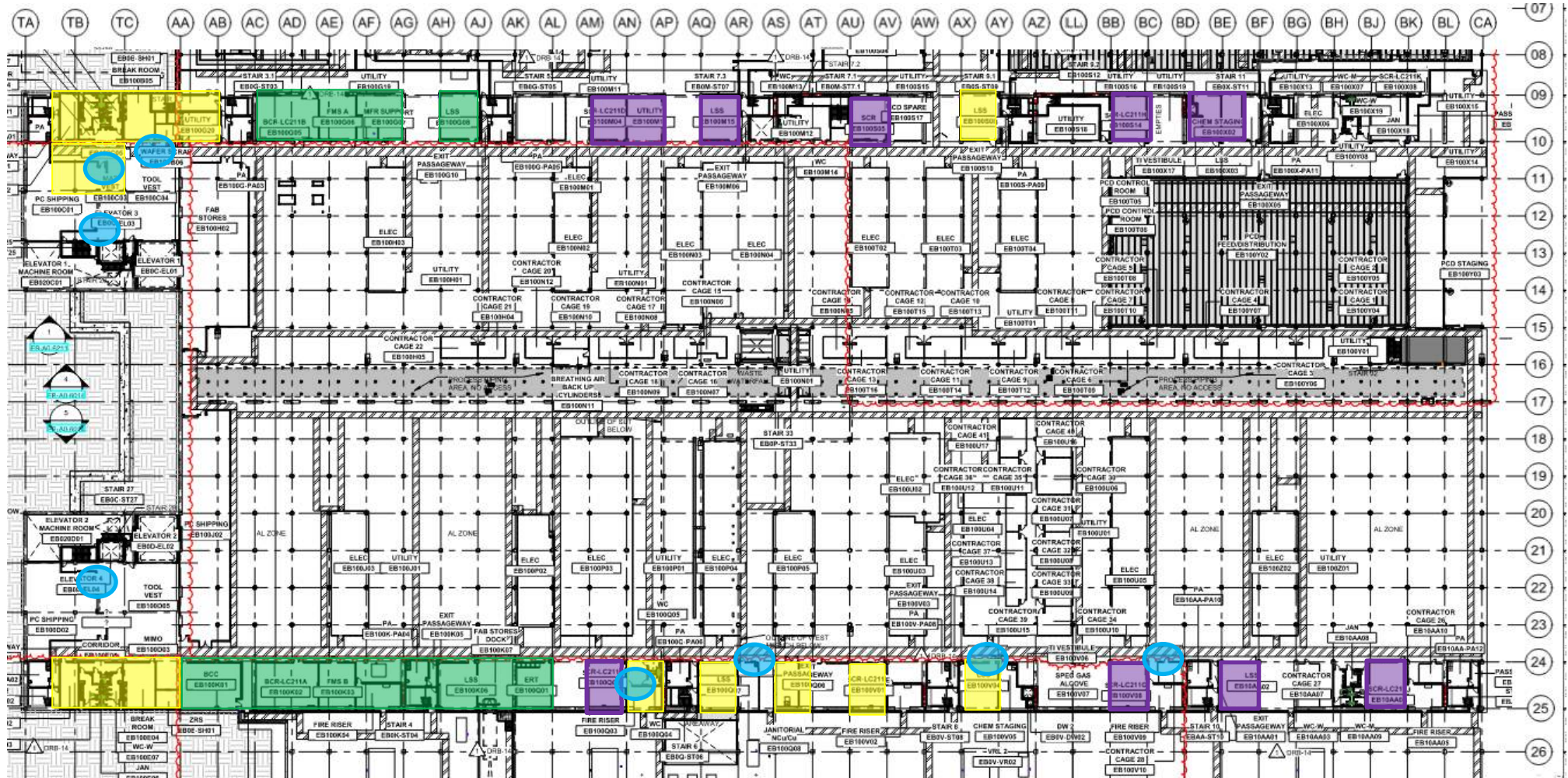
UTILITY LEVEL MOD1

Room Ready





UTILITY LEVEL MOD1



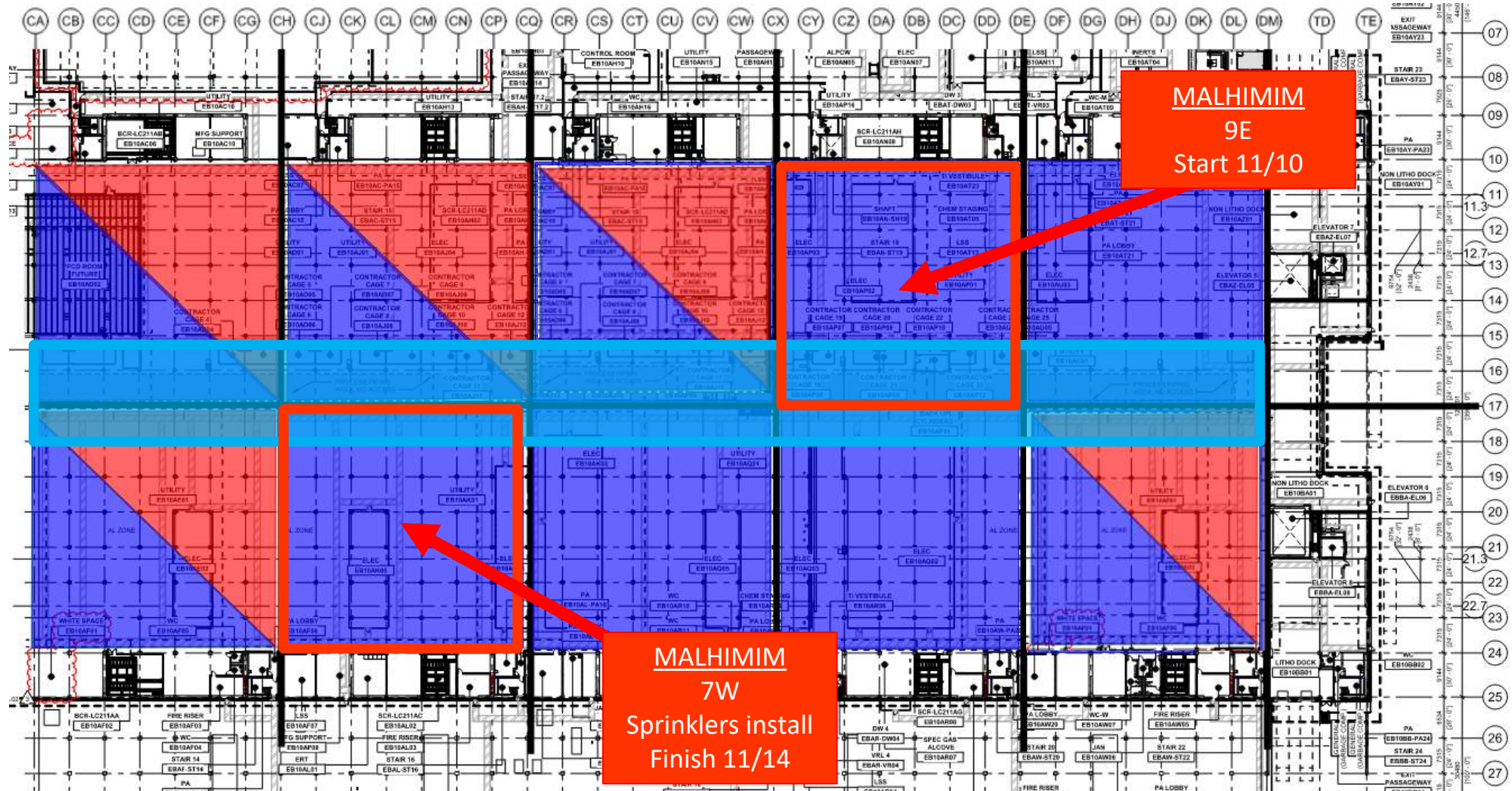
BELFOR
Mold Remediation
SCR 4E
LSS 4E
SCR 2W
SCR 2E
Turnover this week

ELRAM
Drywall install

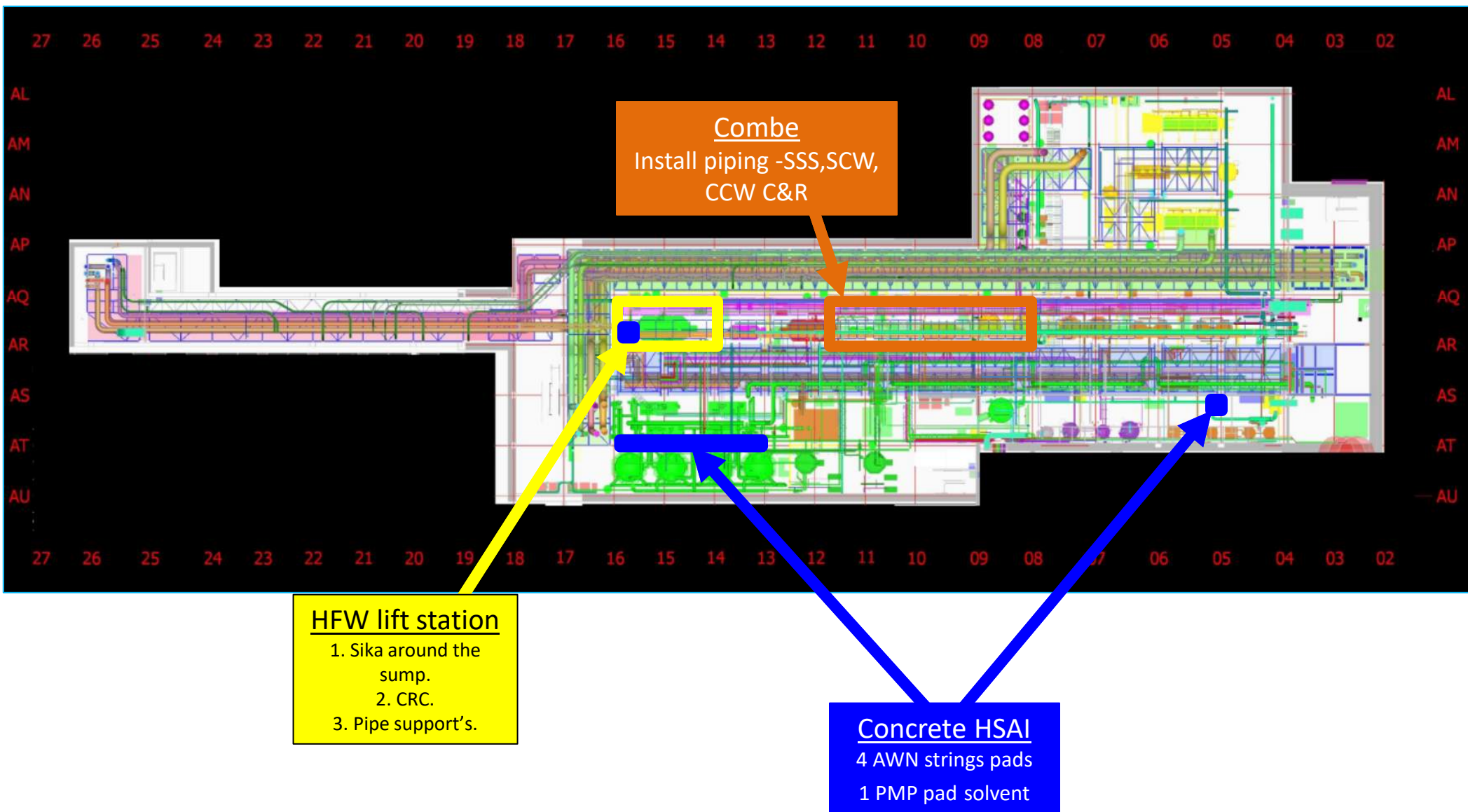
MEP+Electrical
(AFCON, Bynet,
AfcconCtrl, Megason,
Chemo ahron..)
Ready for re-install

WW
RHS for roll-up doors

UTILITY LEVEL MOD2

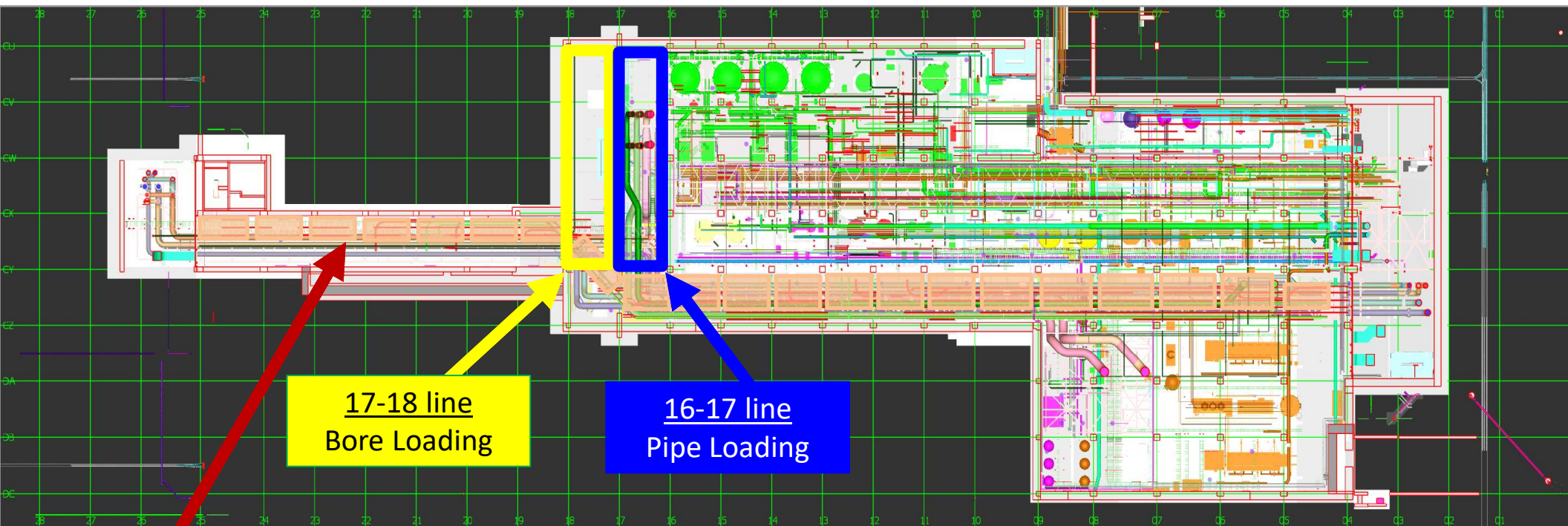


SUT 38.1 LEVEL





SUT 38.2 LEVEL

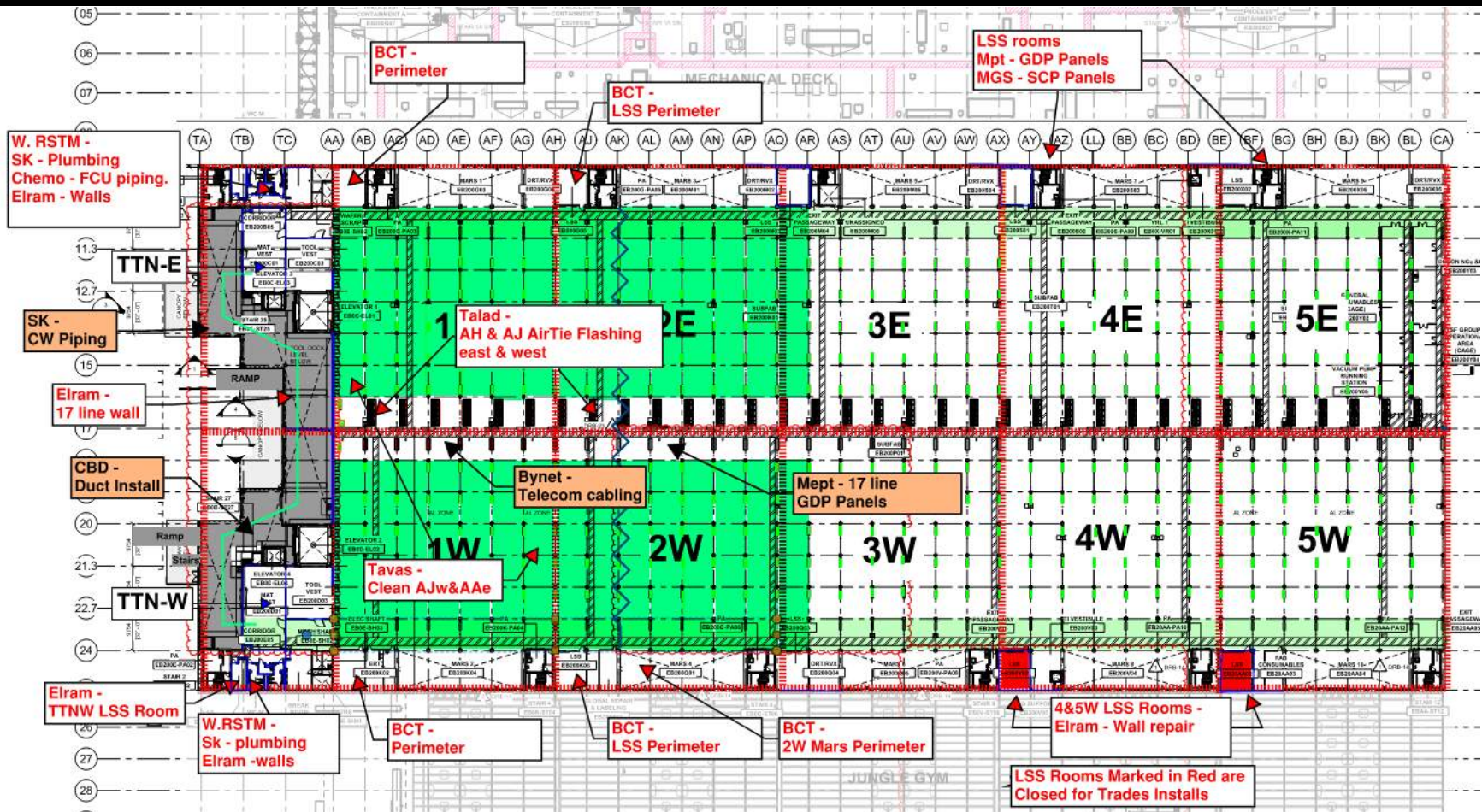


17-18 line
Bore Loading

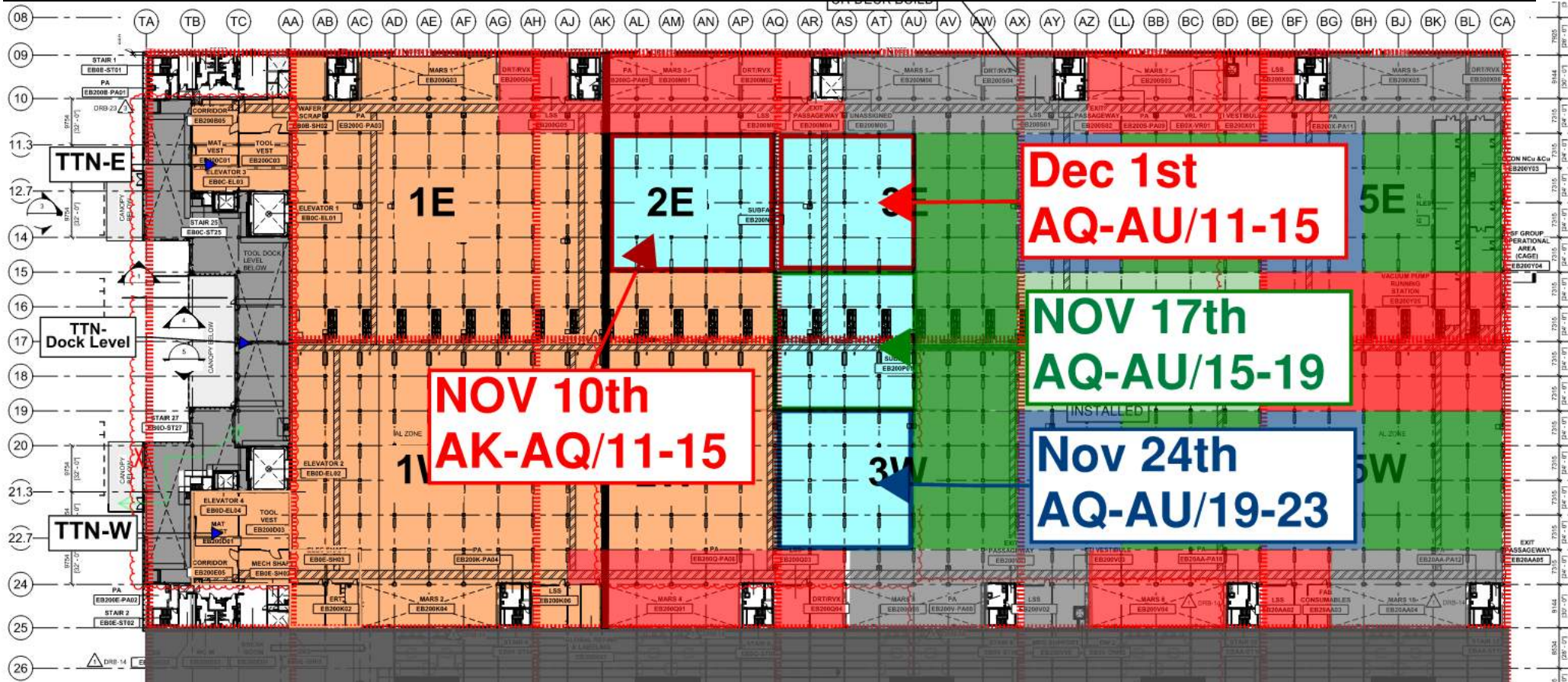
16-17 line
Pipe Loading

Vesda
Need to install
on the West.

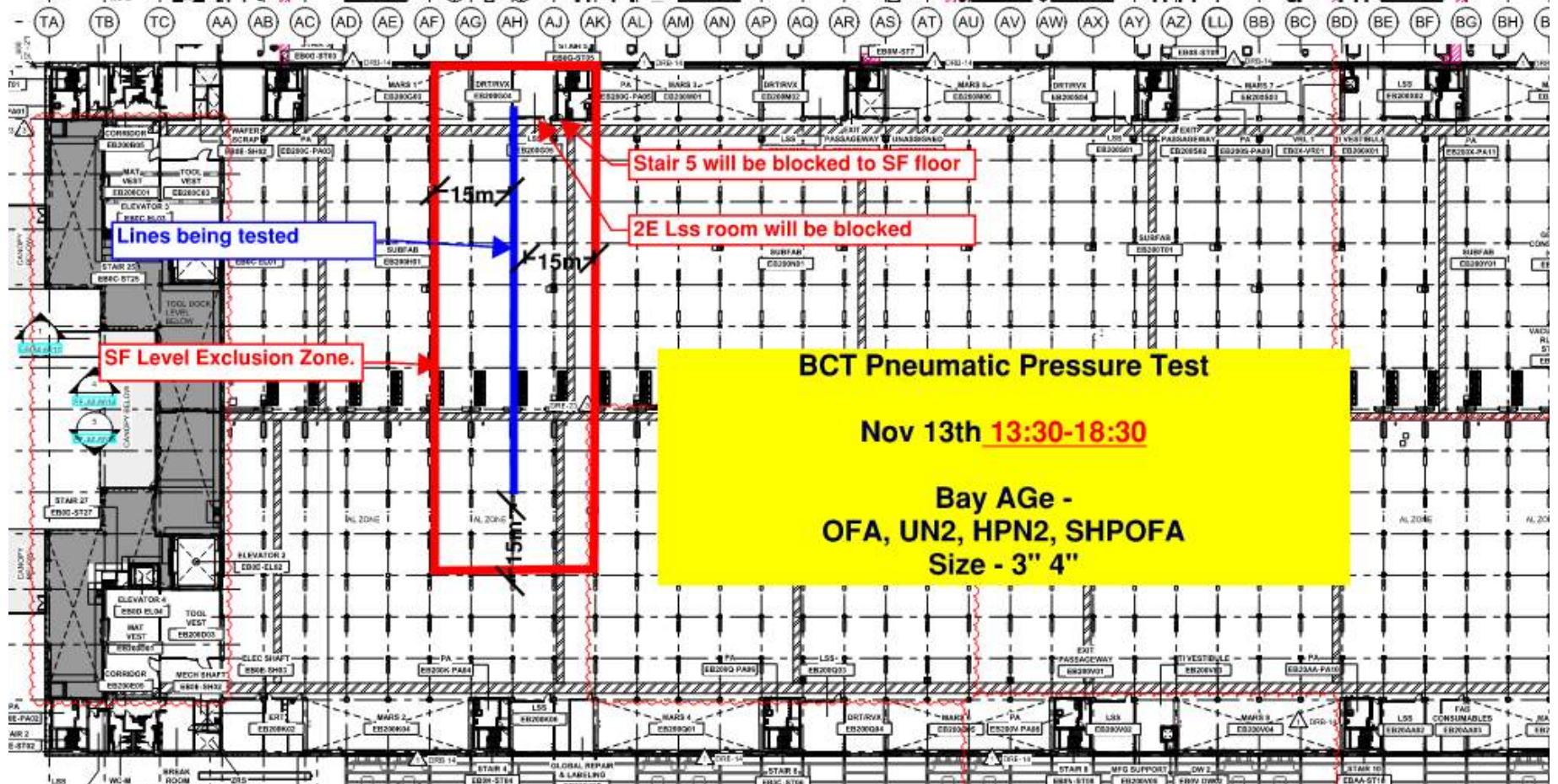
SUBFAB BUILDOUT MOD 1



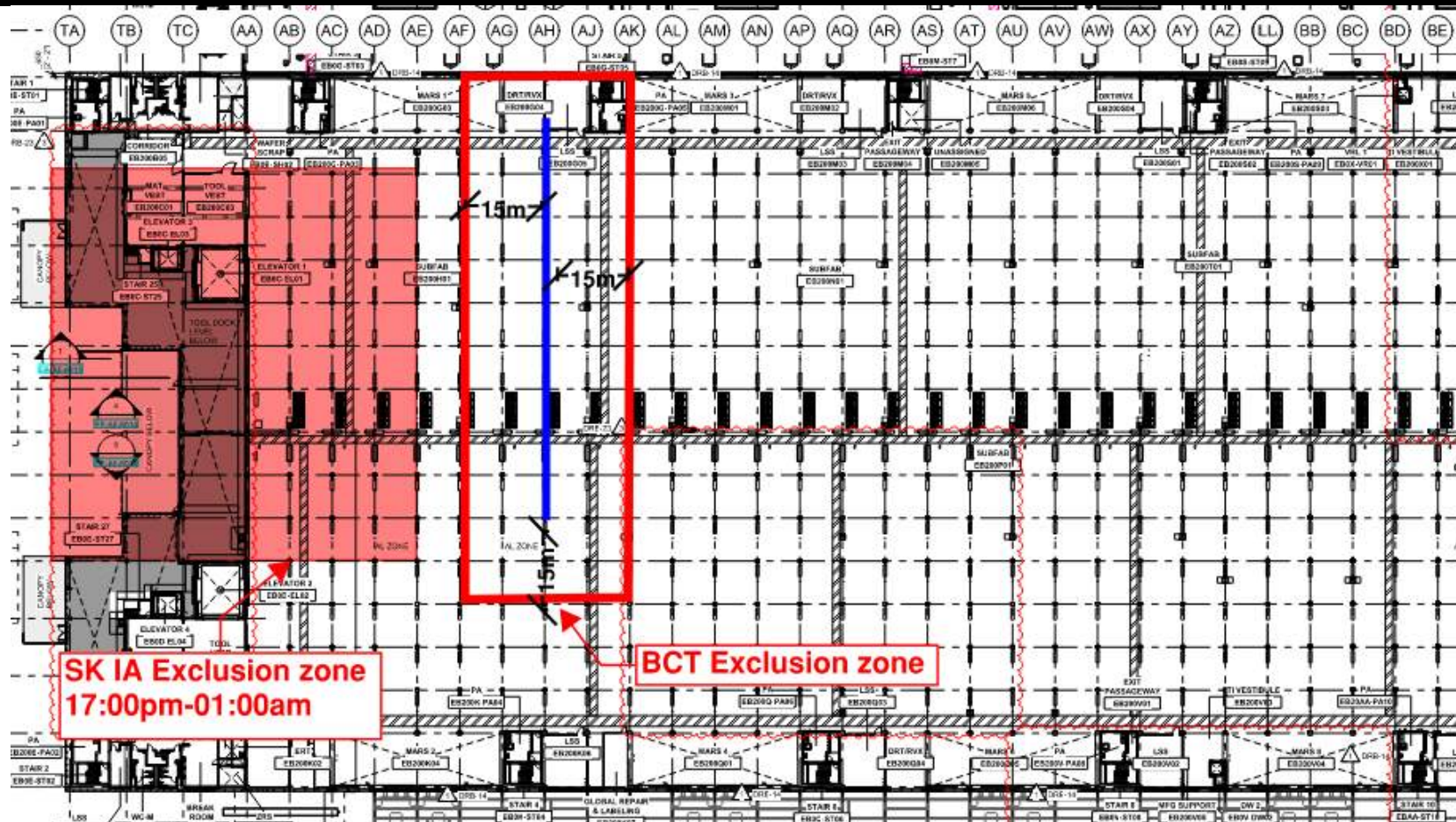
SUBFAB CRC TOPCOAT



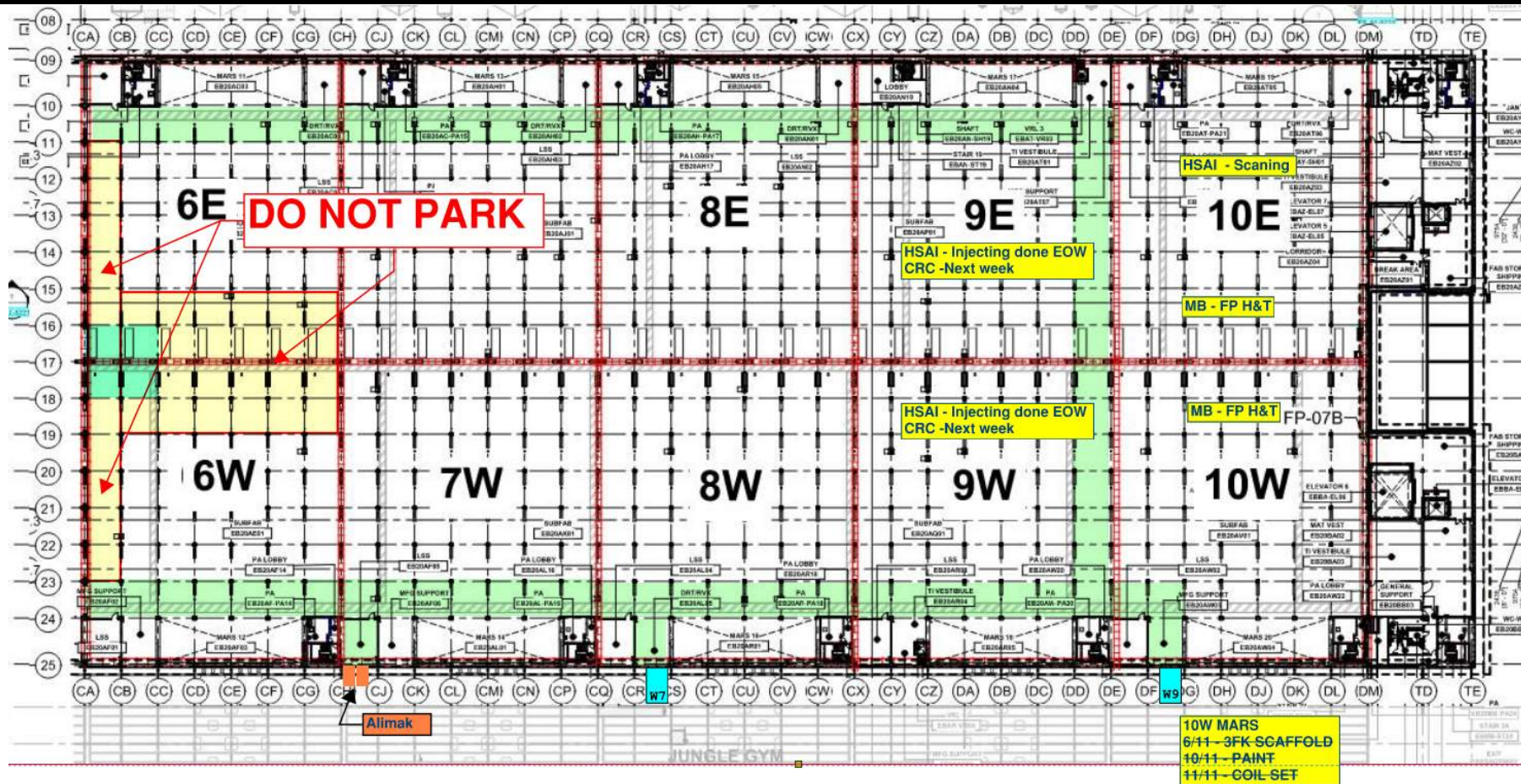
BCT Pressure Test



SK IA Pressure Test



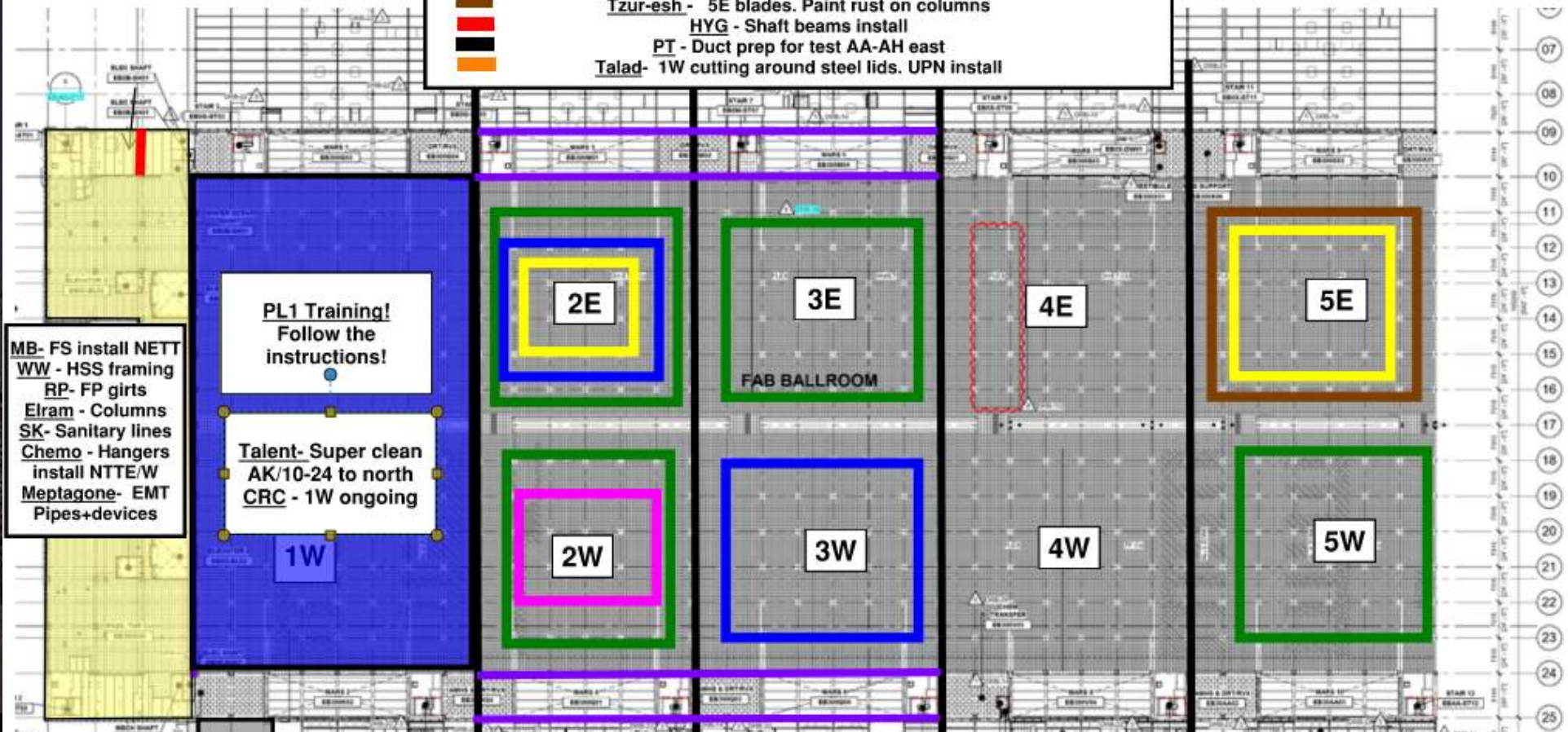
SUBFAB BUILDOUT MOD 2





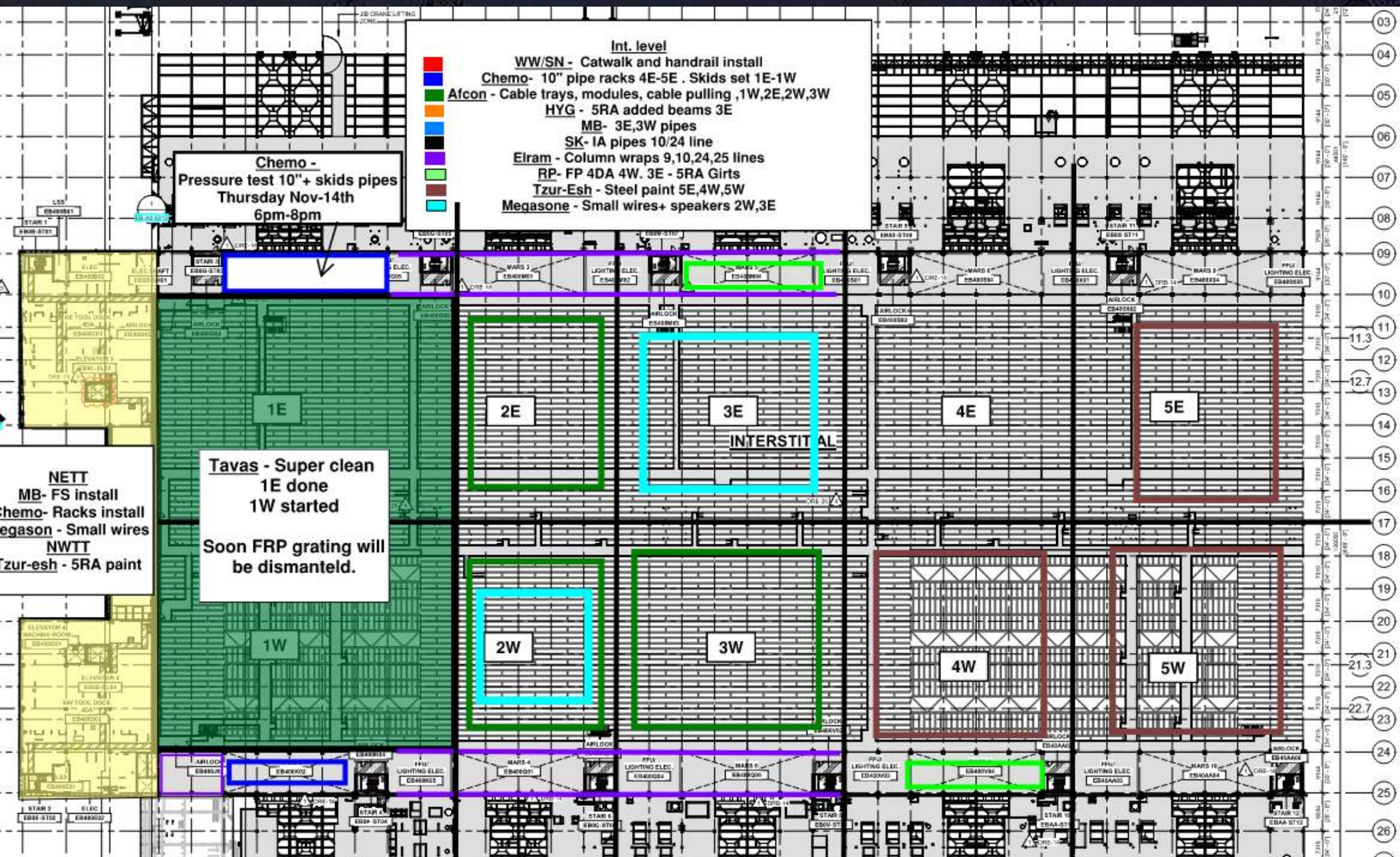
CR level:

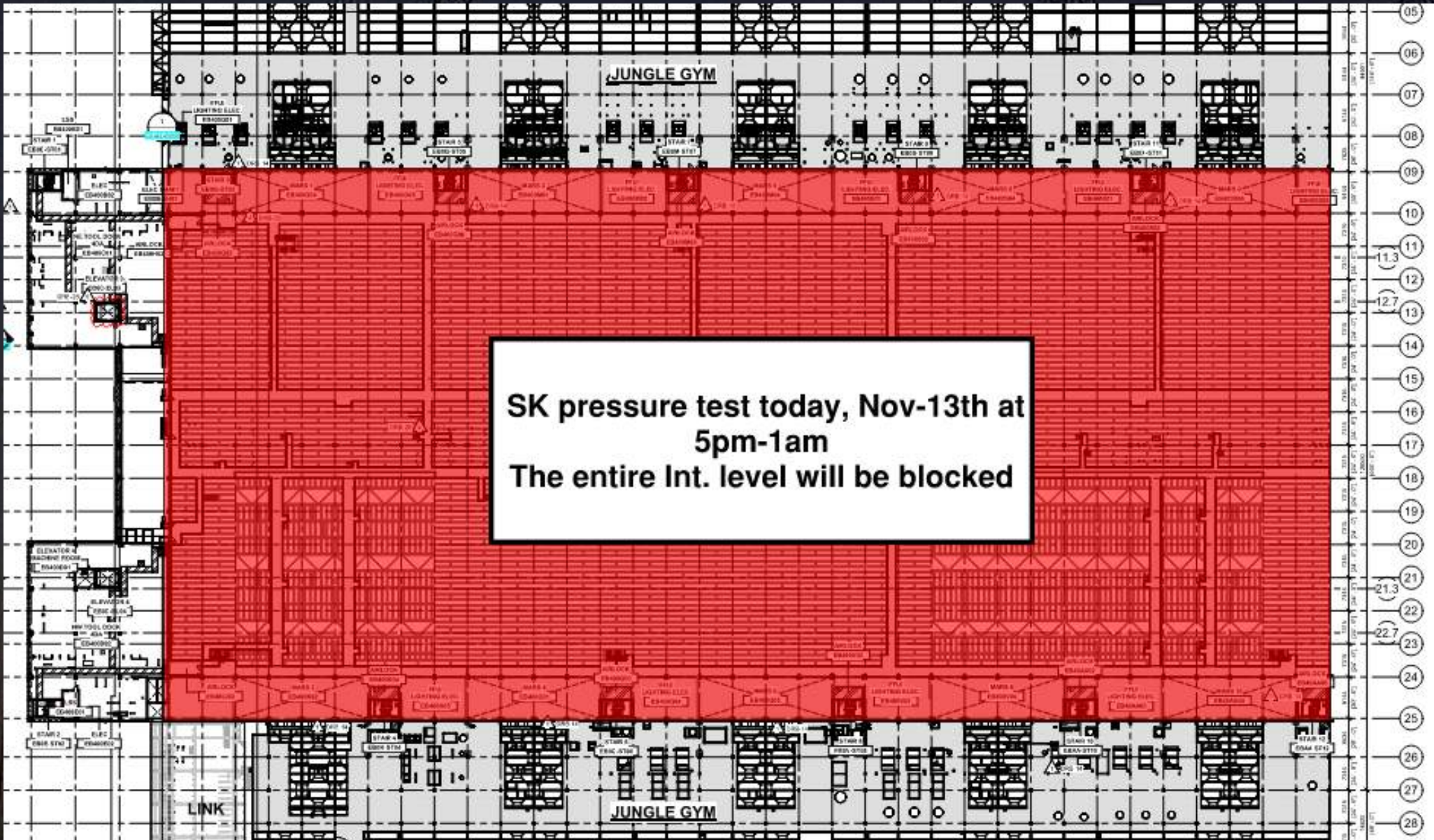
- Afcon - Cable trays, modules and stickers
- MB - Pipes and drops
- Eiram - 9-10,24-25 columns/shaft walls. AA line column wraps
- Meptagon - EMT Pipes+devices. TET/NET devices all areas
- Meptagon - I&C 2W
- D&P - Rods install. Blades waiting for survey
- Tzur-esh - 5E blades. Paint rust on columns
- HYG - Shaft beams install
- PT - Duct prep for test AA-AH east
- Talad - 1W cutting around steel lids. UPN install



MB- FS install NETT
WW- HSS framing
RP- FP girls
Eiram- Columns
SK- Sanitary lines
Chemo- Hangers
install NTTE/W
Meptagone- EMT
Pipes+devices

Link
Pach-Taas – exhaust duct install and tie in
SIG- Mobile scaffold install
Afcon- Rack install
Newcotech- Temp wall
Afcon – Cable tray & racks install
Sela - CRC waiting for QC turnover
Talad - CRC protection cover

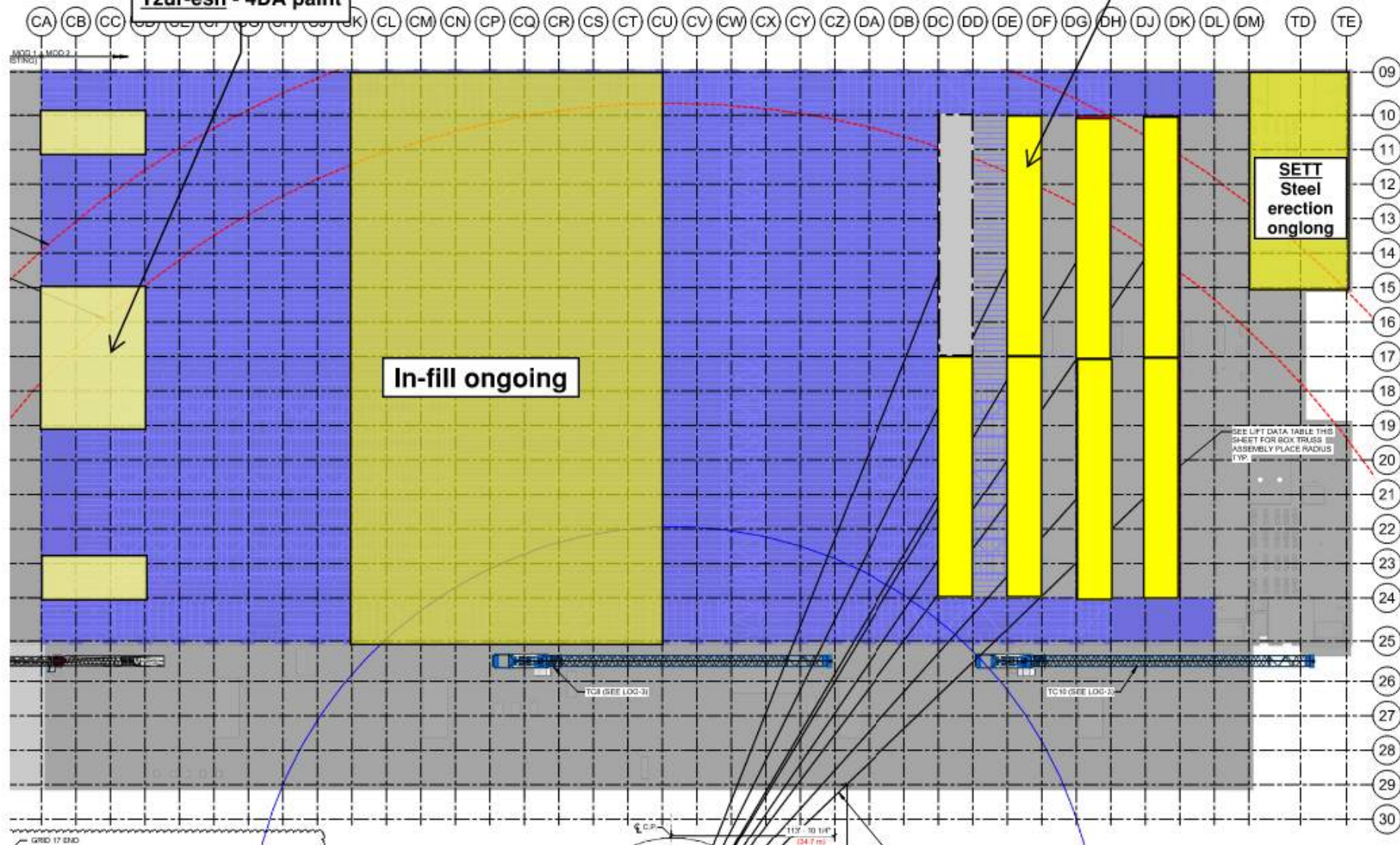






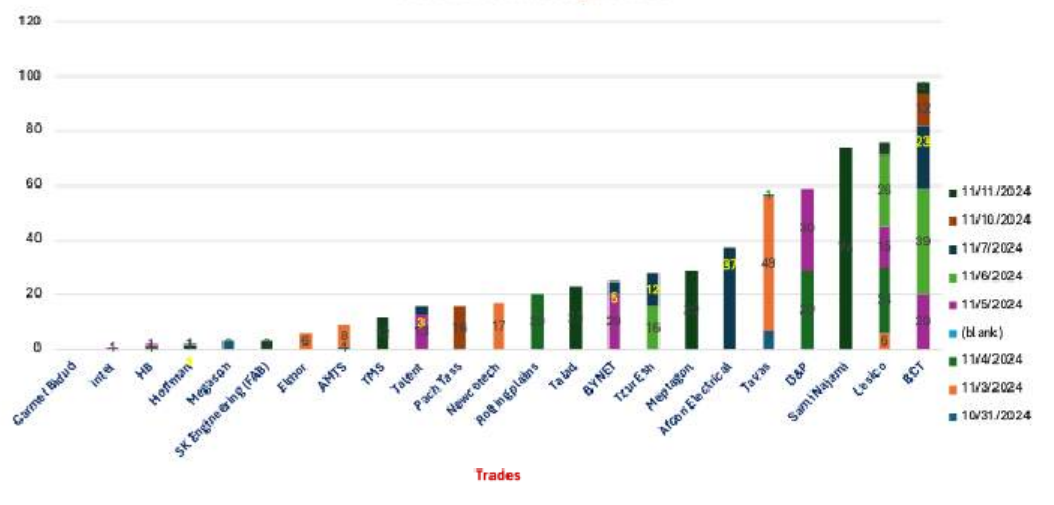
Truss #27 Thursday
Nov-15th

RPC - FP CA-CD
Tzur-esh - 4DA paint



PL1&2 Protocol Training for Clean Zone Total of 613

PL1 & PL2 Trainees per Trade



Violations Control – Stop work

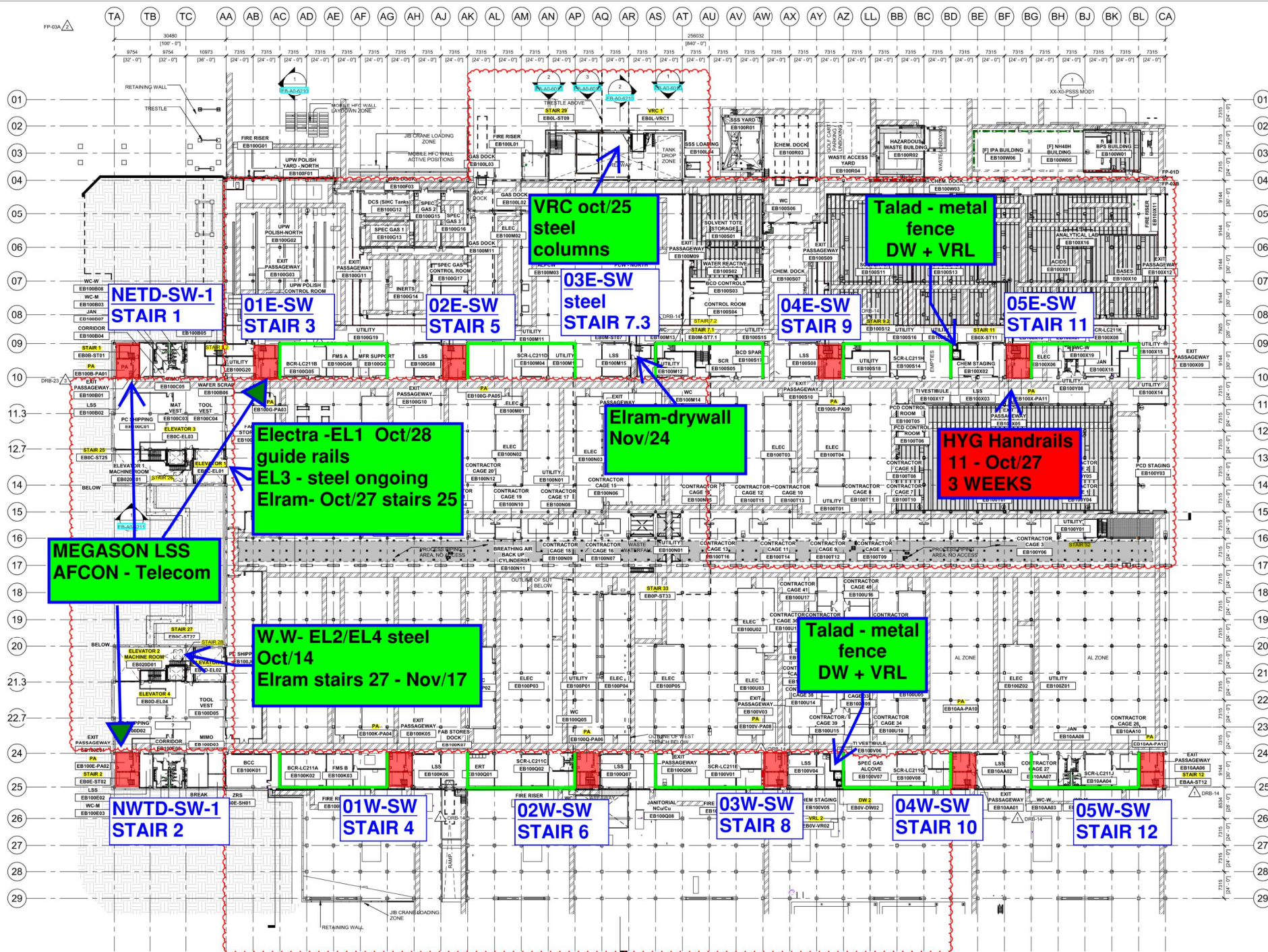


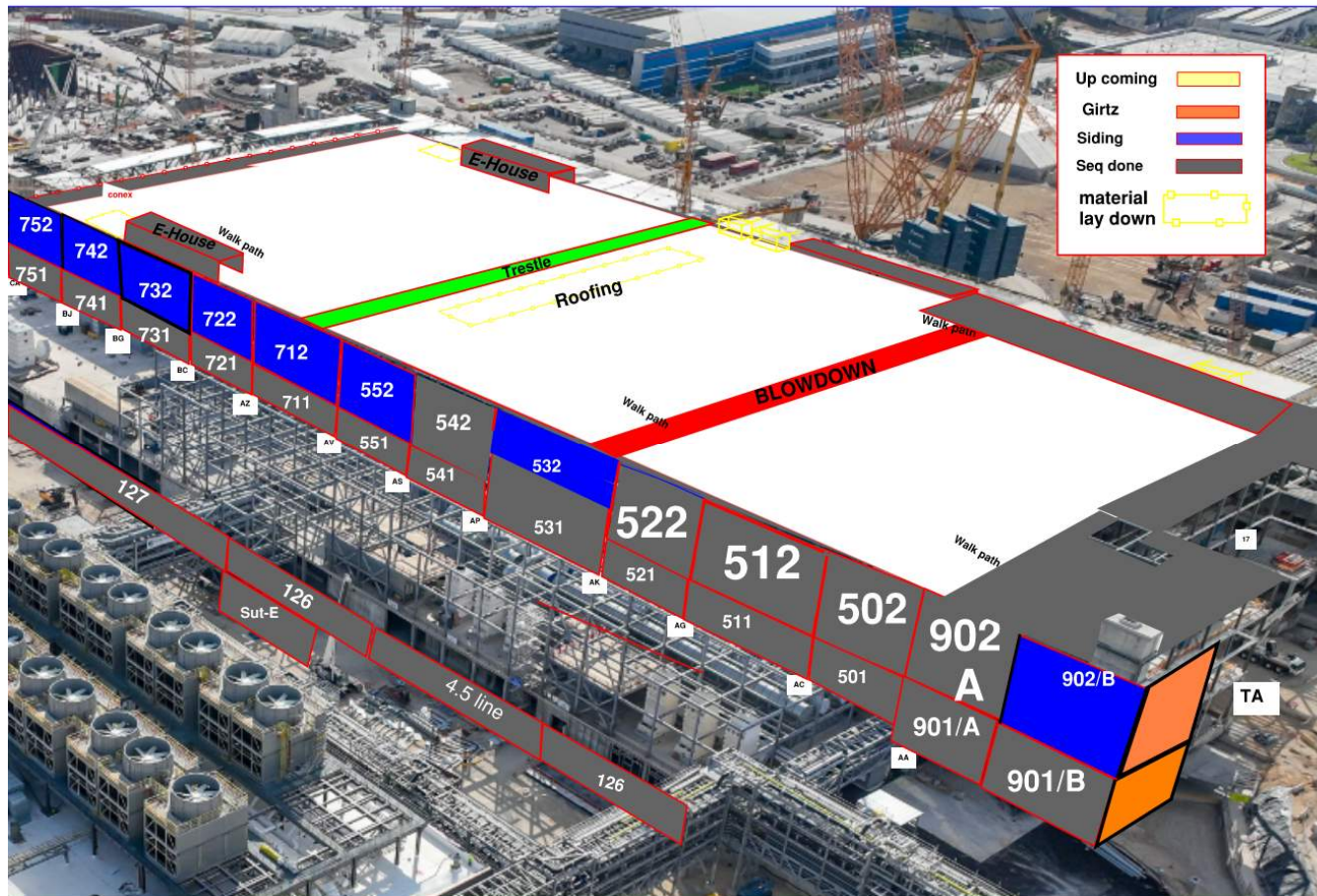
Trade Protocol Champions Program:

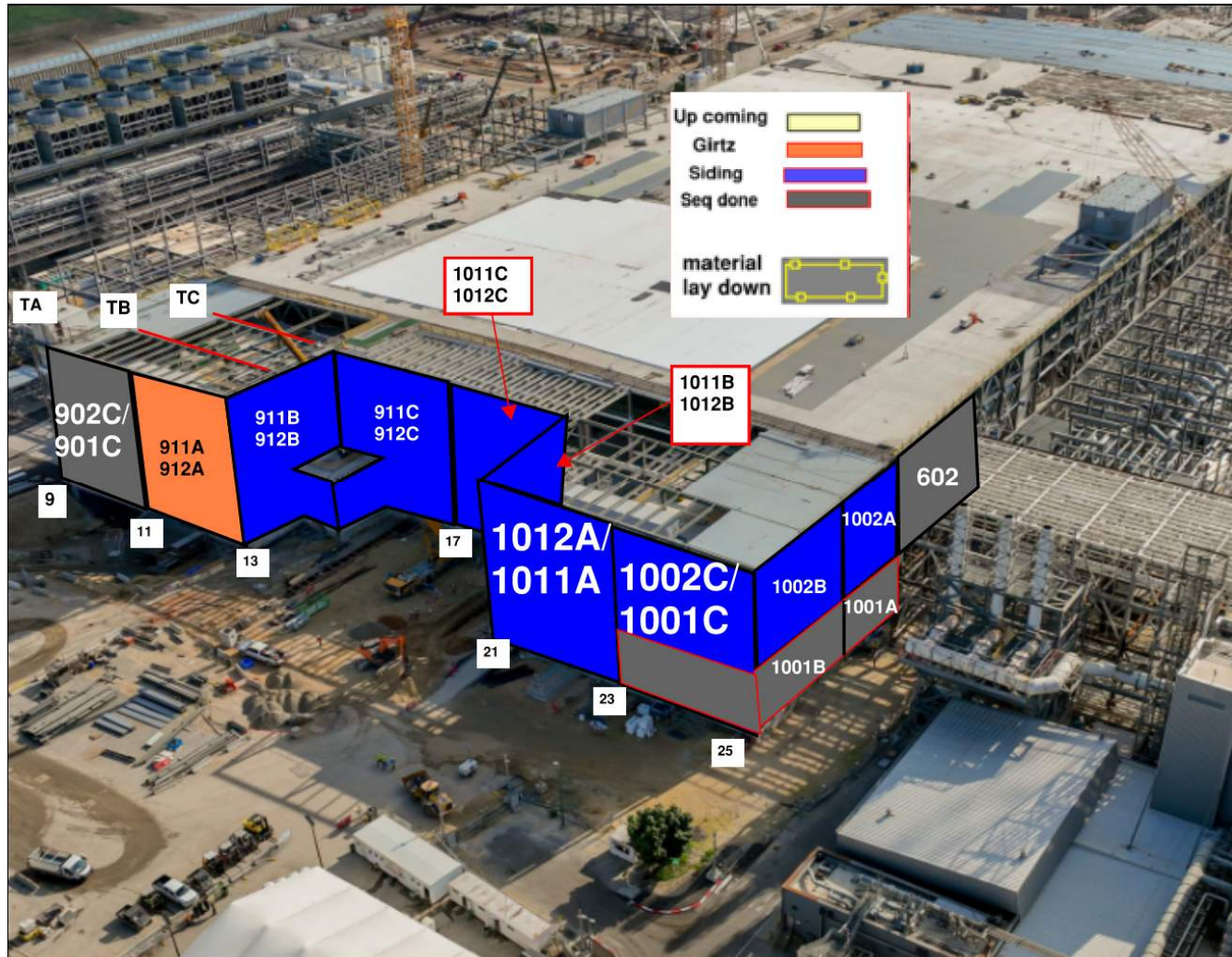
Objective: establish strong relationship with direct communication with Trade workers and Management to achieve high level of Protocol performance

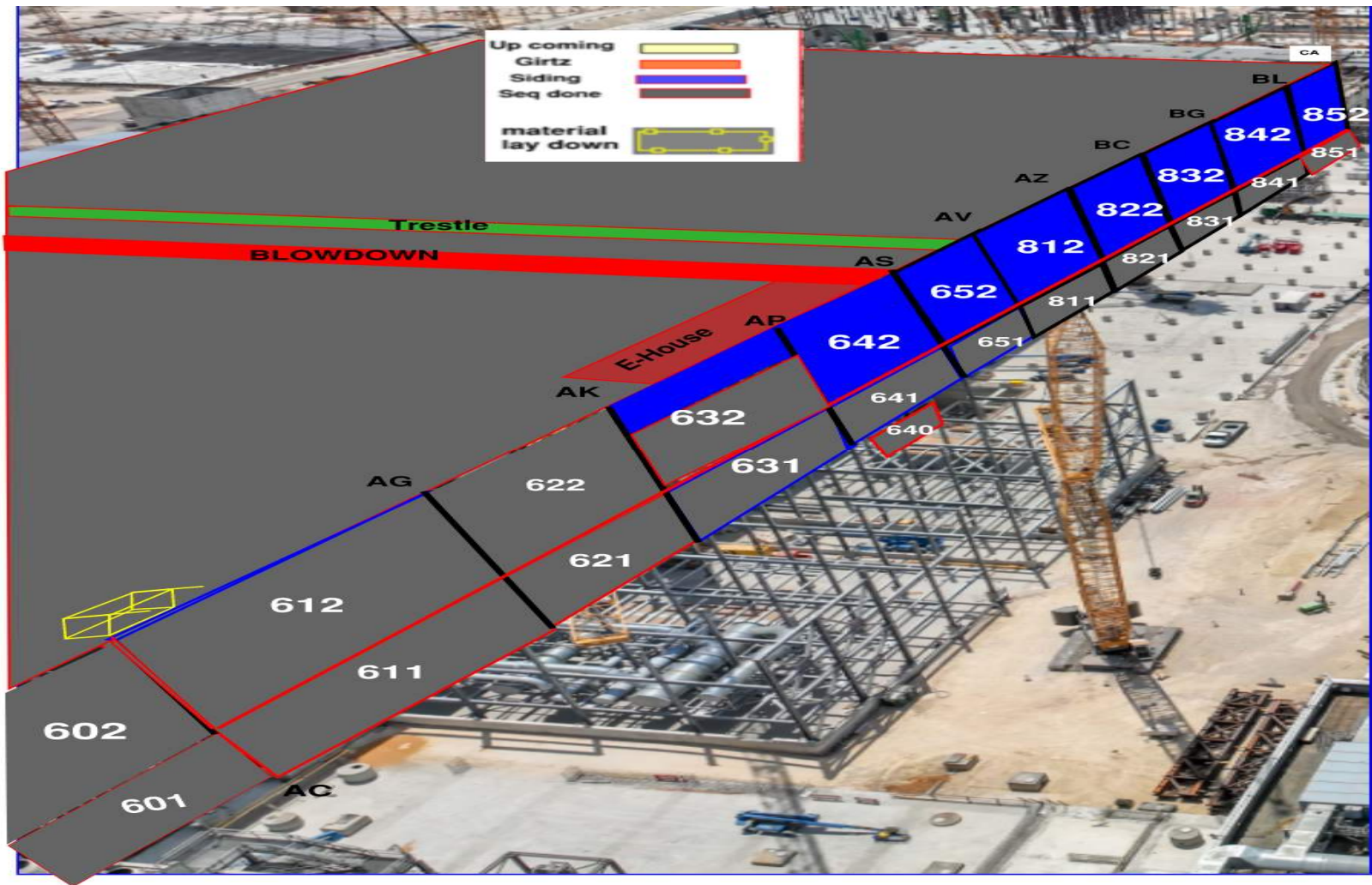
Help needed:

- One or Two rep's from each Trade (requires company e-mail)
- Availability for Training and group formation
- Slot for protocol updates at the Trade tool box





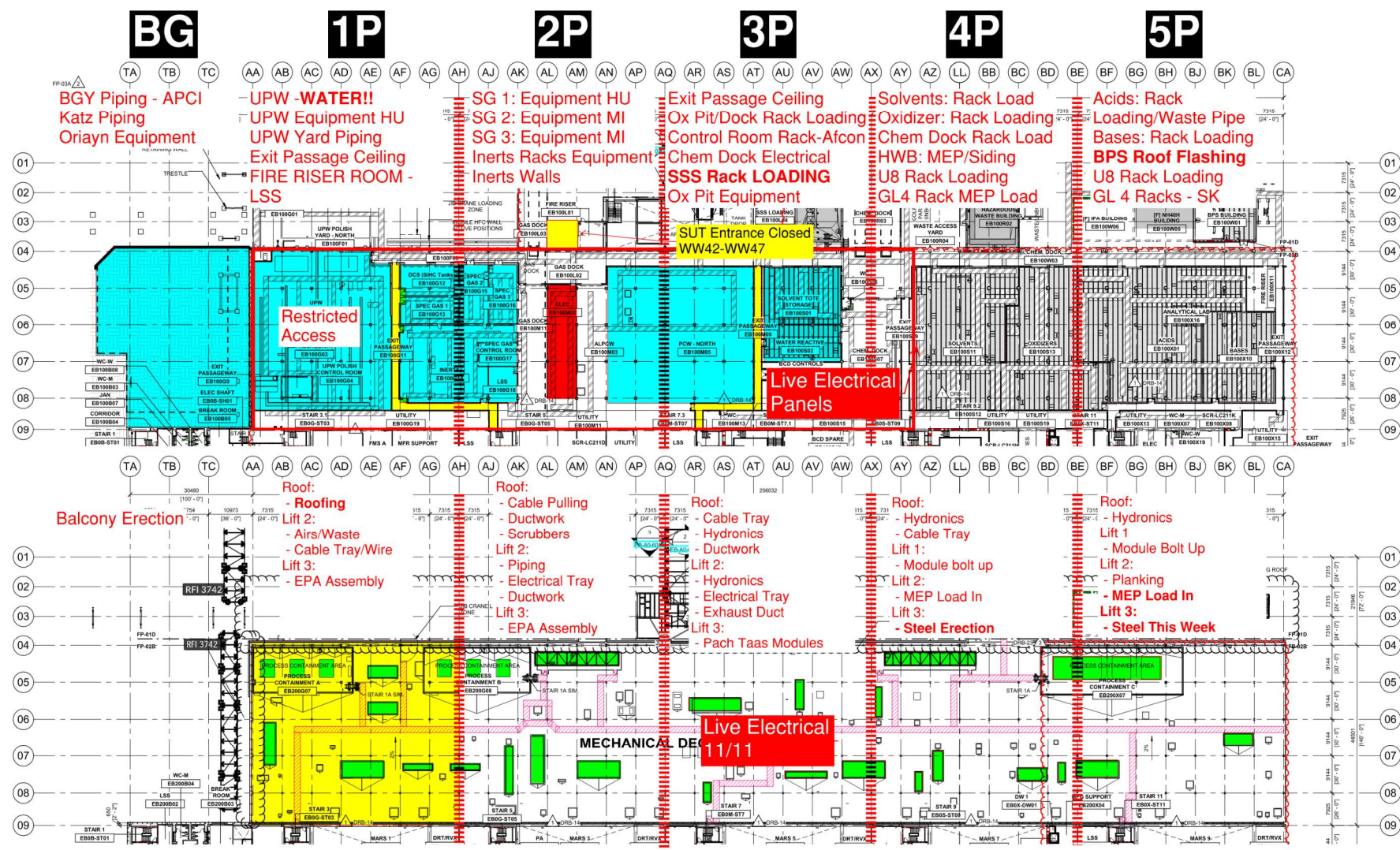




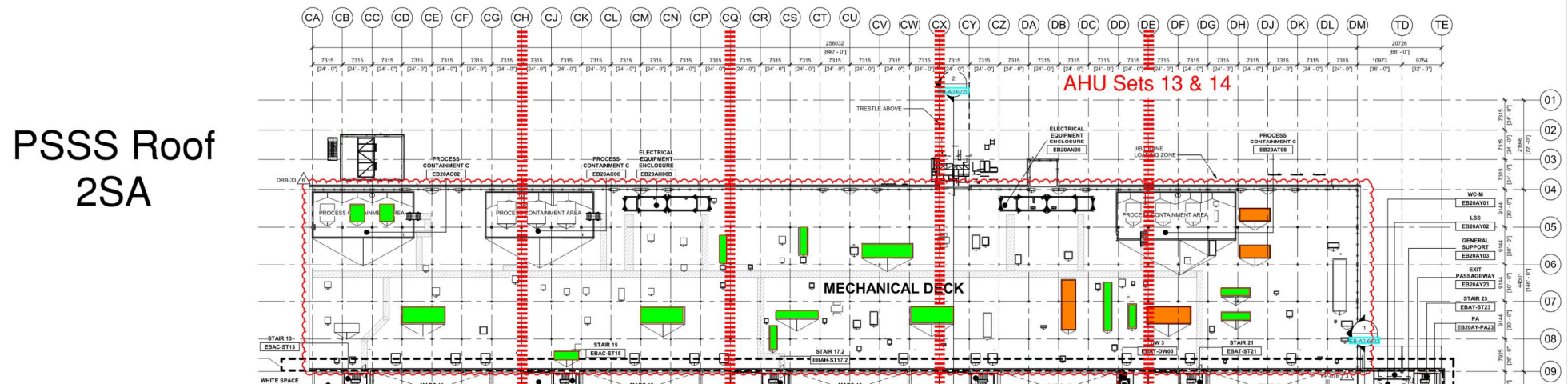
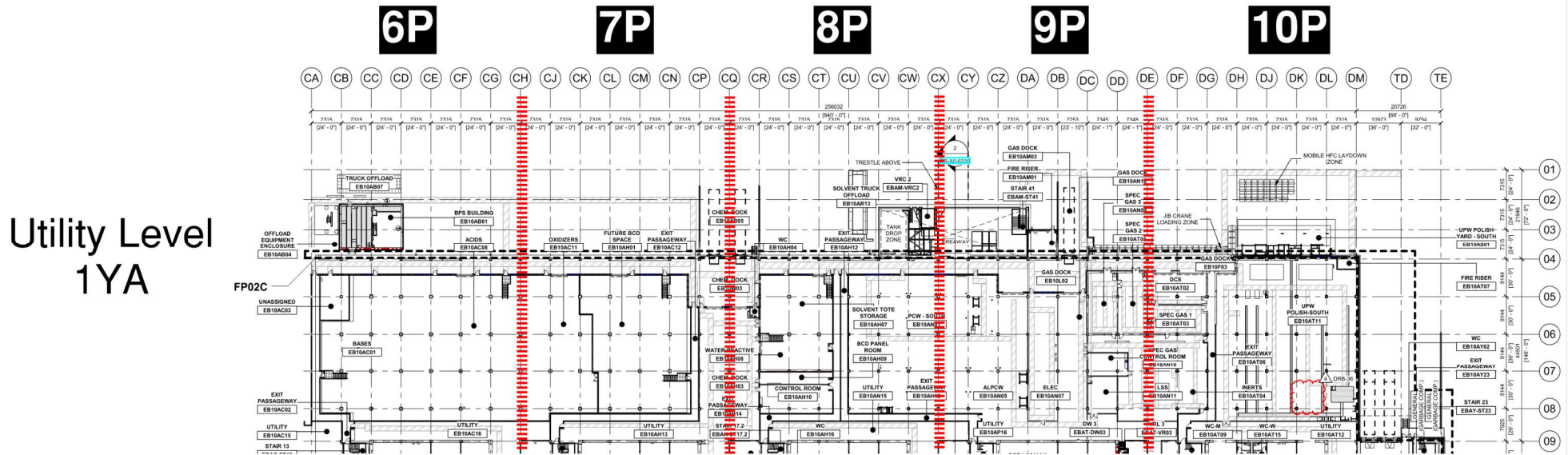
PSSS.1

Utility Level 1YA

PSSS Roof 2SA



PSSS.2

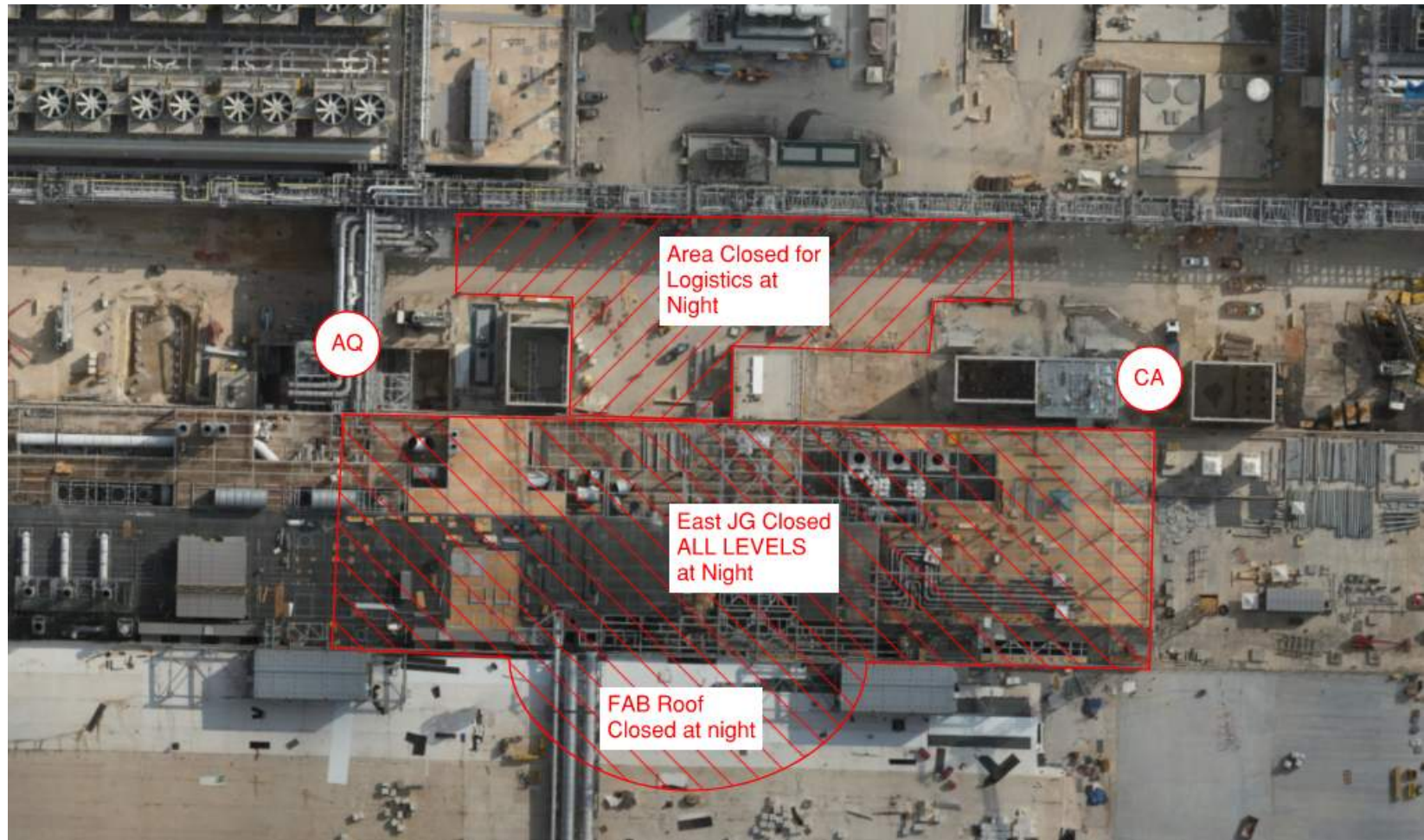


500T Build for PSSS 11/11- 12/11

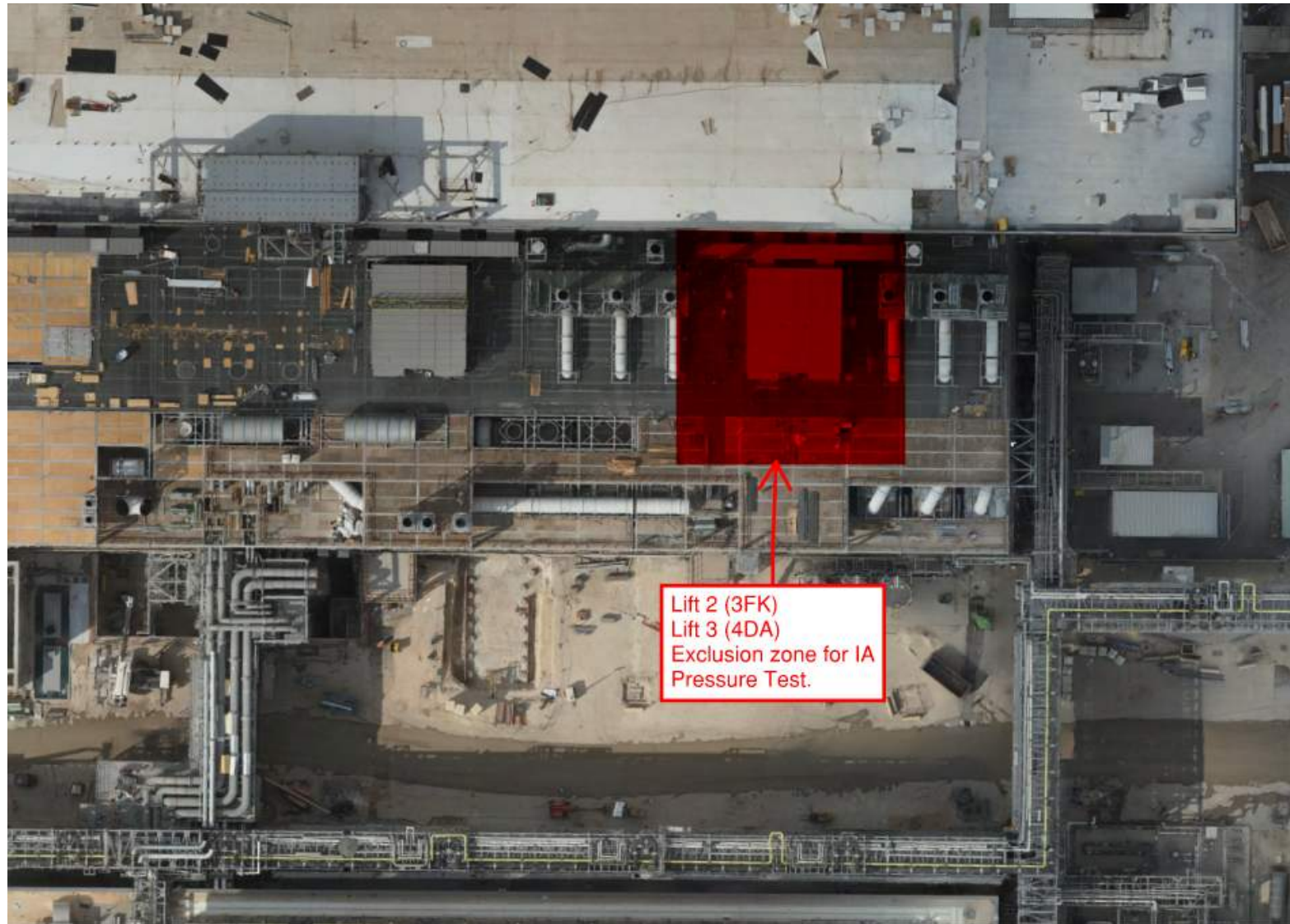


TC3
Dismantle
13/11
14/11
(Nights)

650T Set
up
NOW

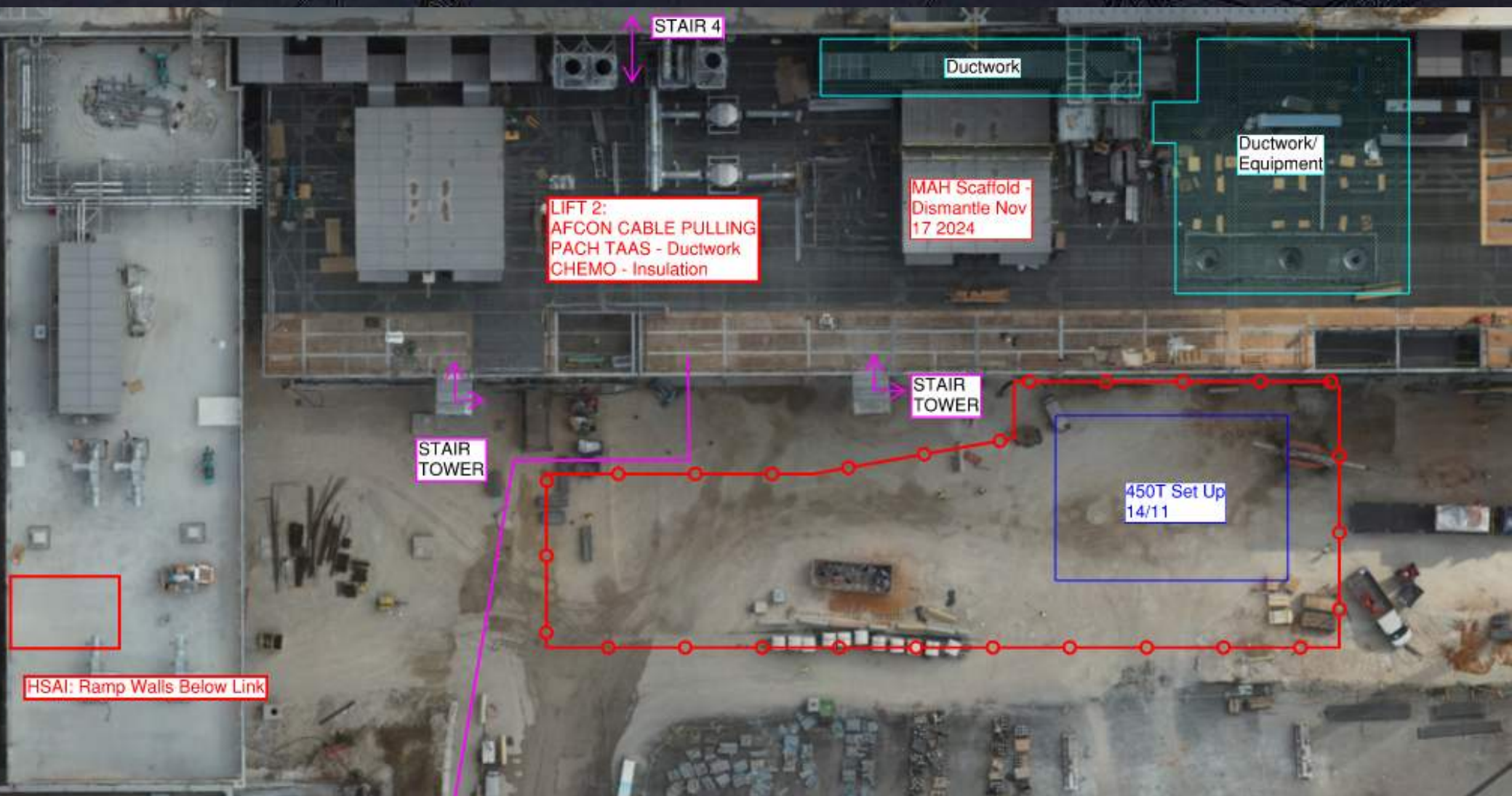


IA
Pressure
Test
13/11
17:00-
04:00

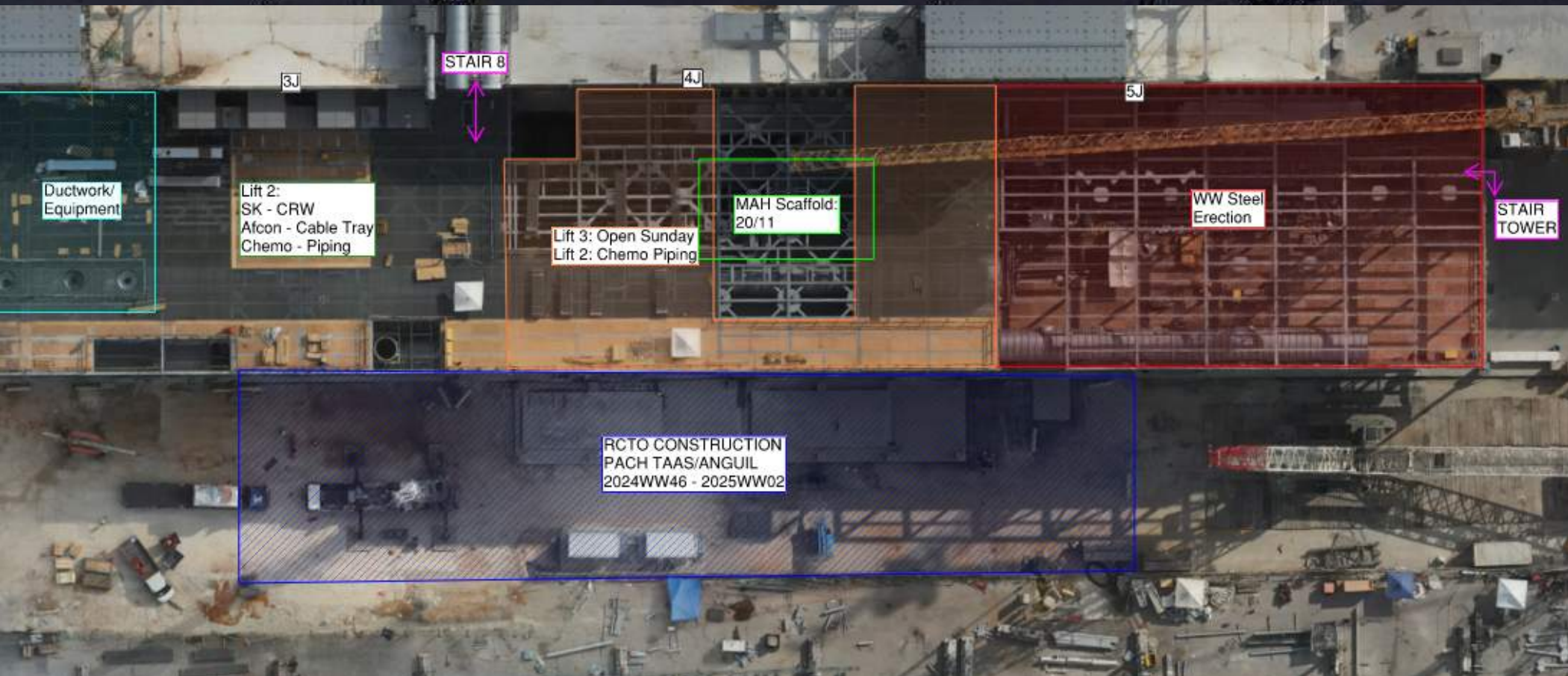


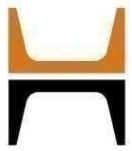


WJG 01J, 02J LIFT 2 & 3

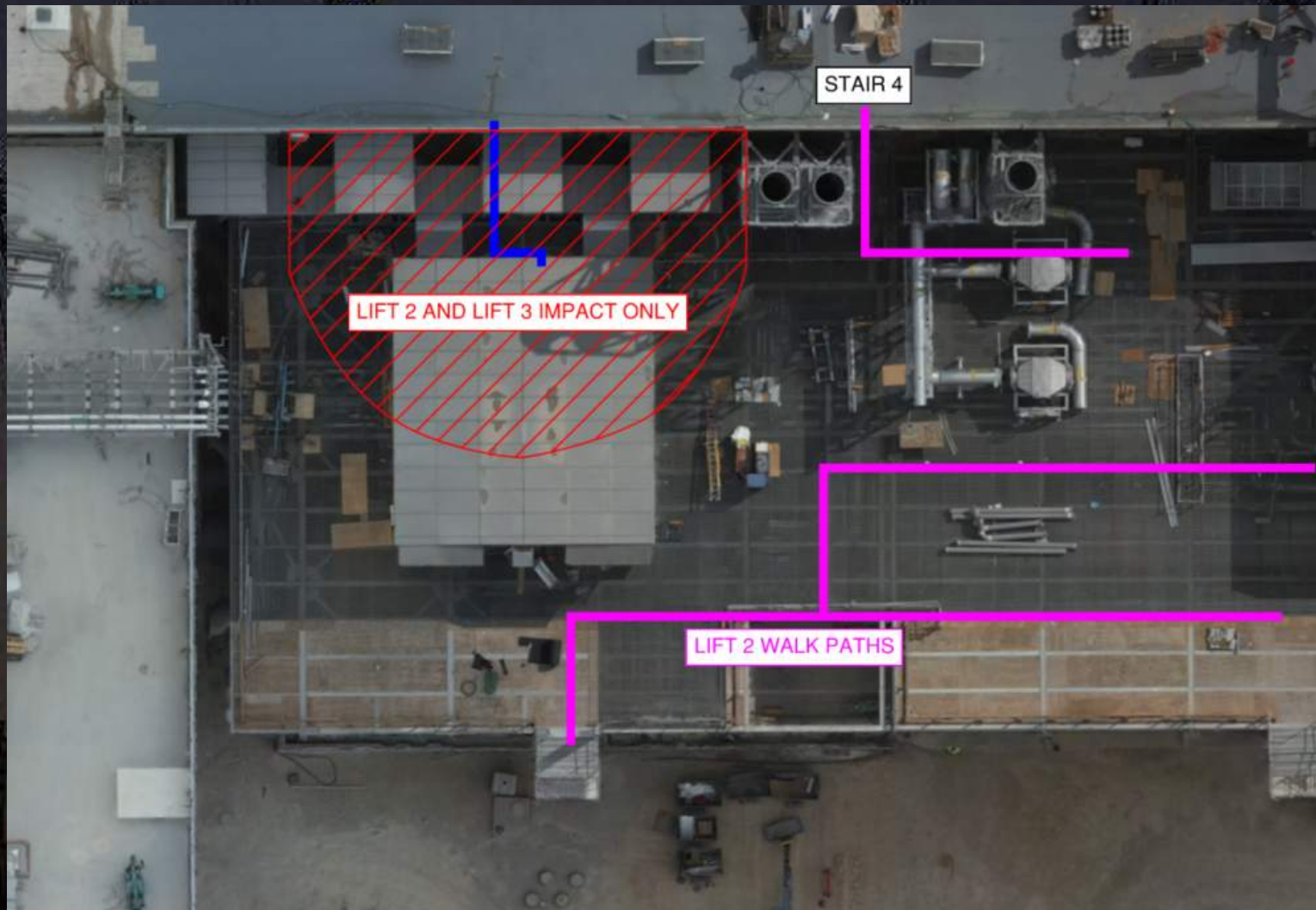


WJG 03J, 04J, 05J LIFT 2 & 3



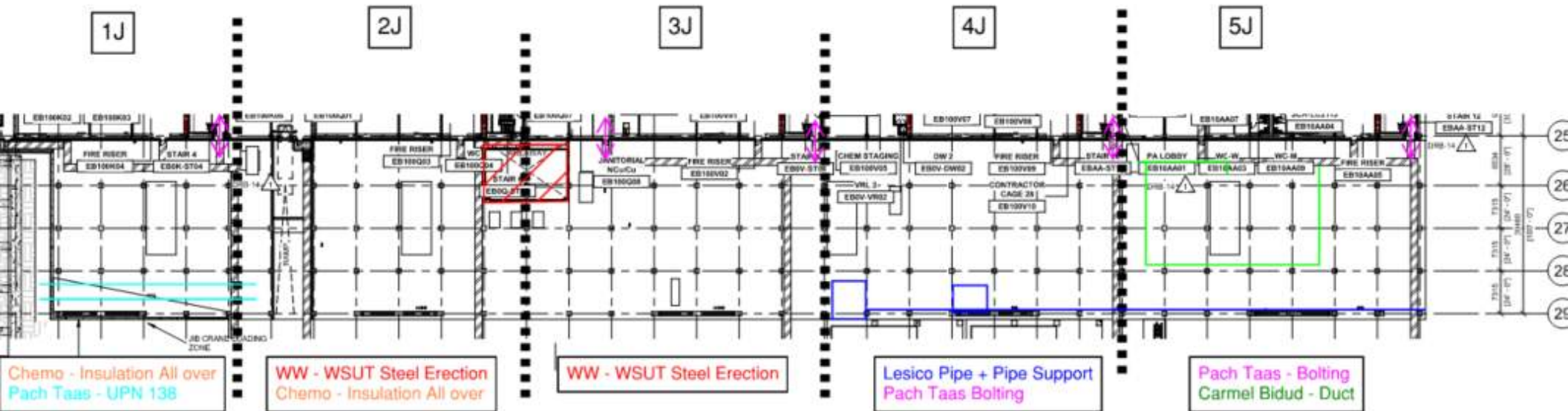


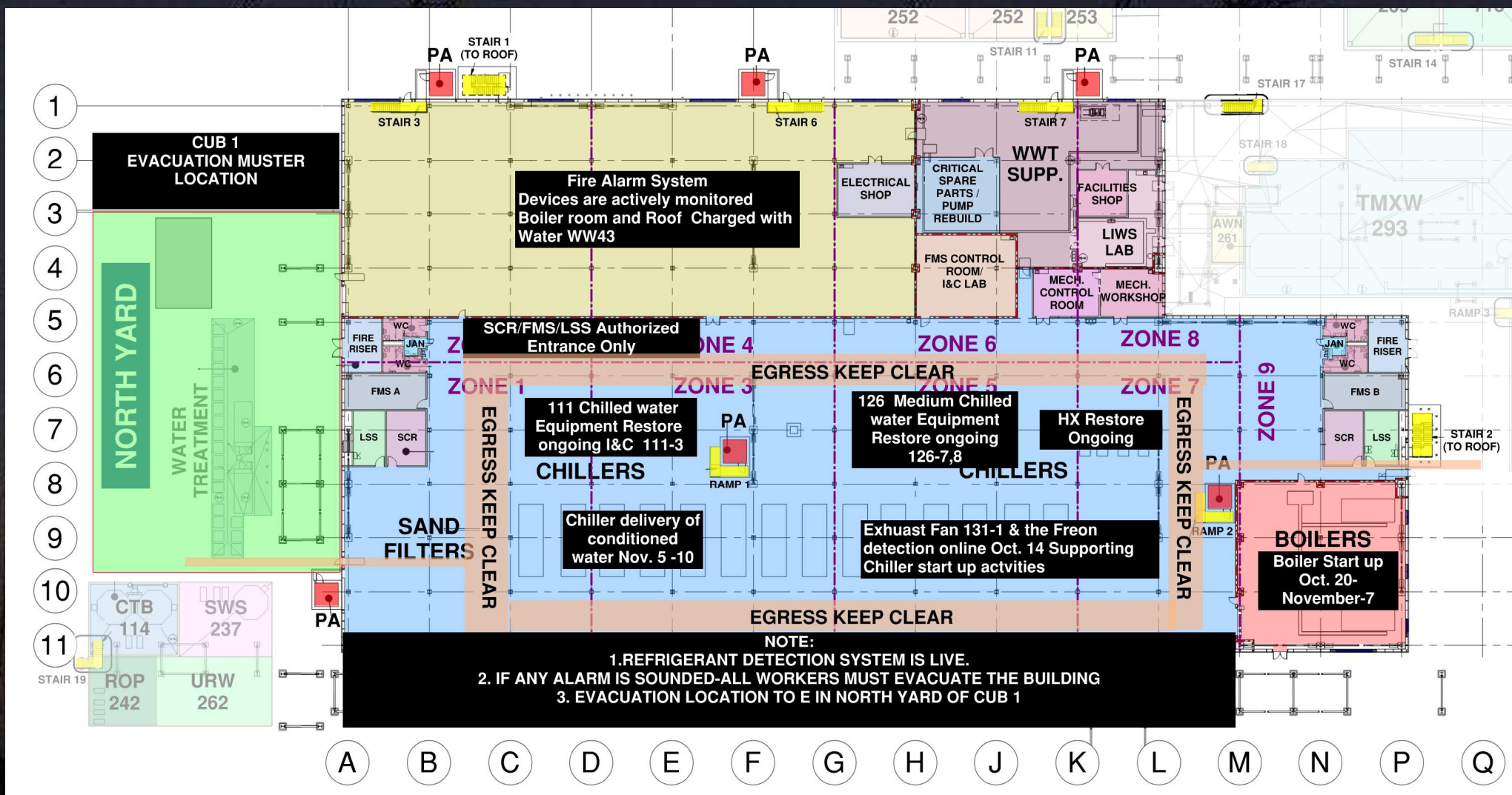
IA Pressure test Exclusion Zone 13/11/2024 Night Shift



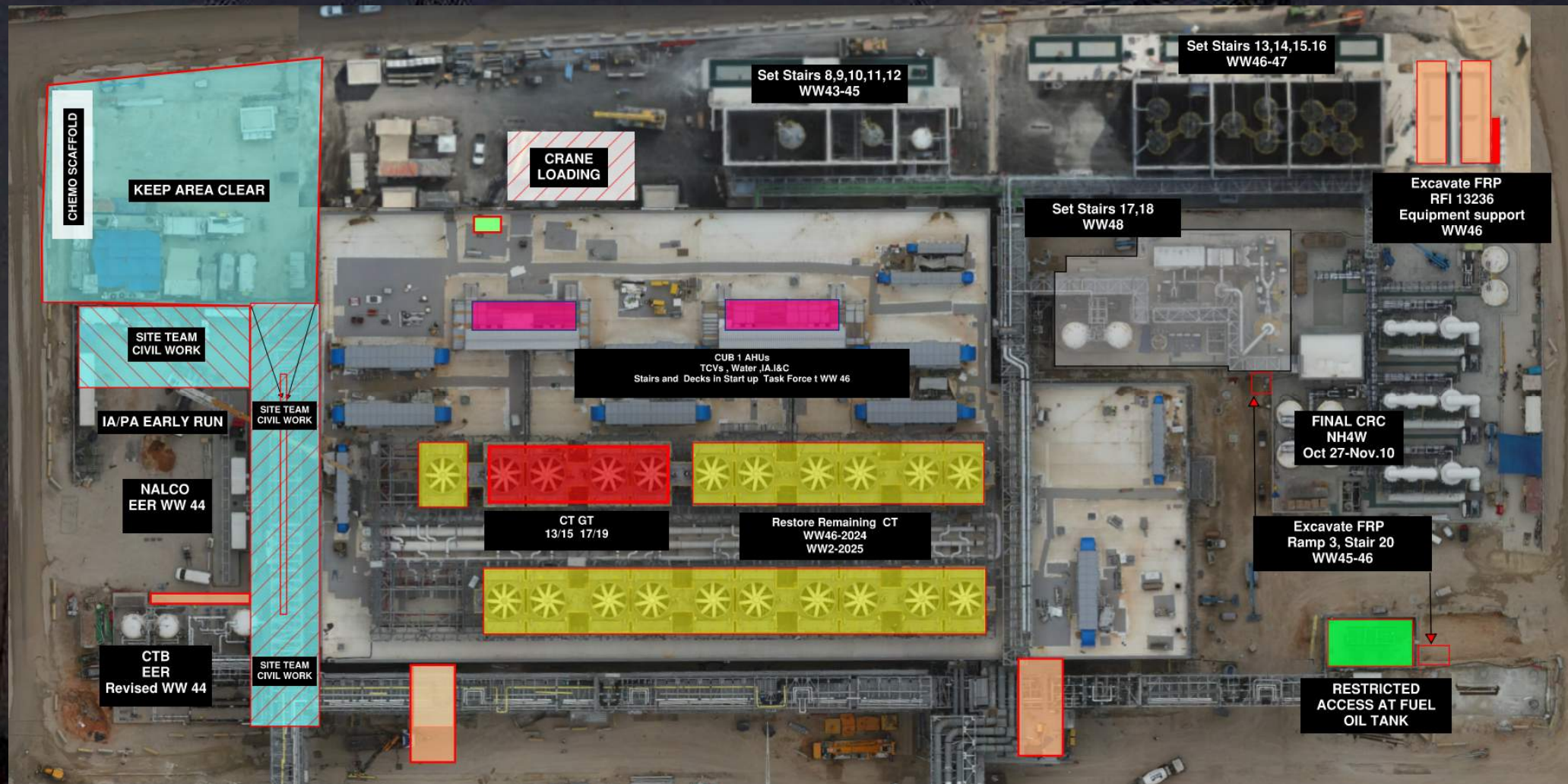


WJG UTILITY LEVEL BUILD OUT



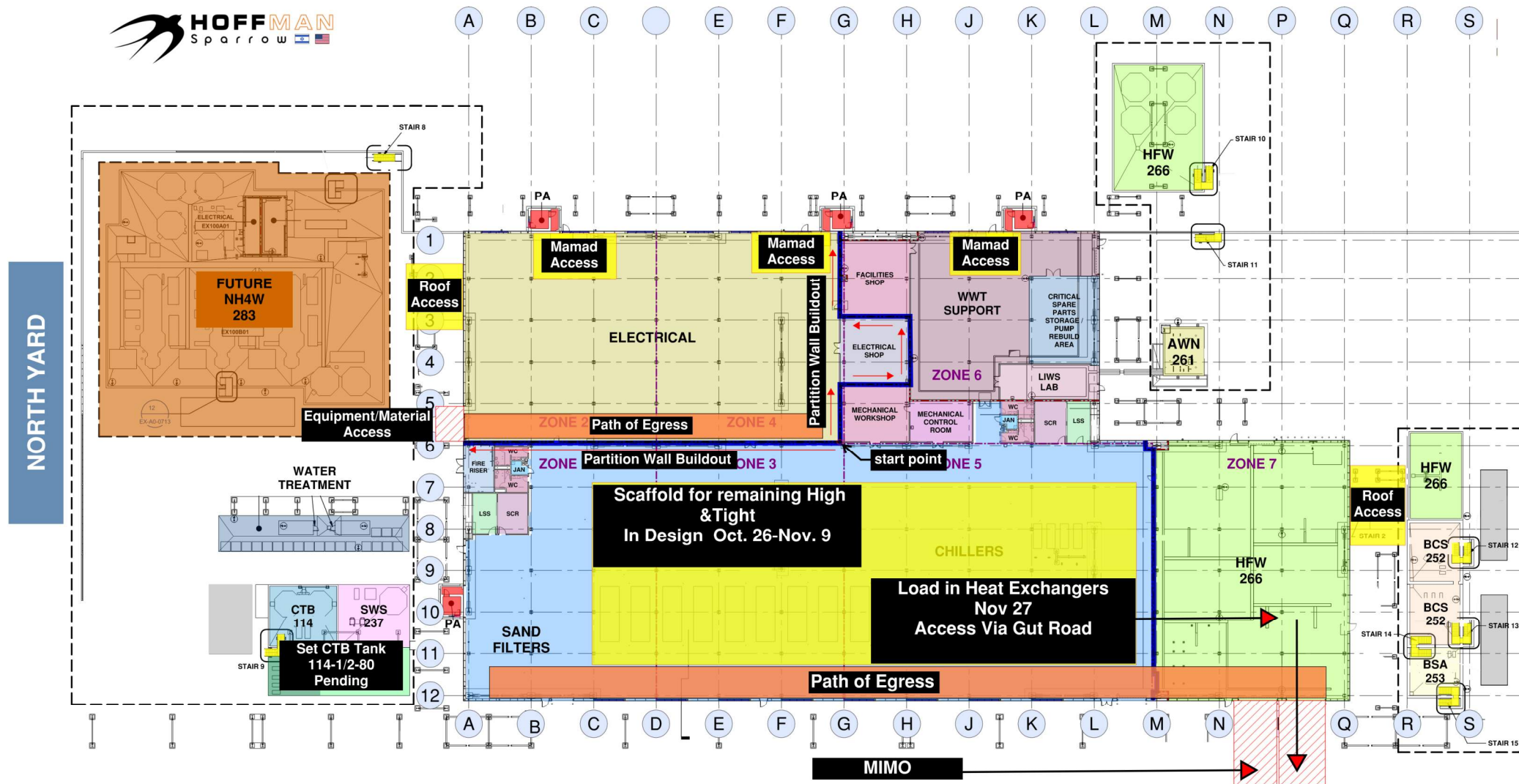


CUB 1 – EXTERIOR/ROOF

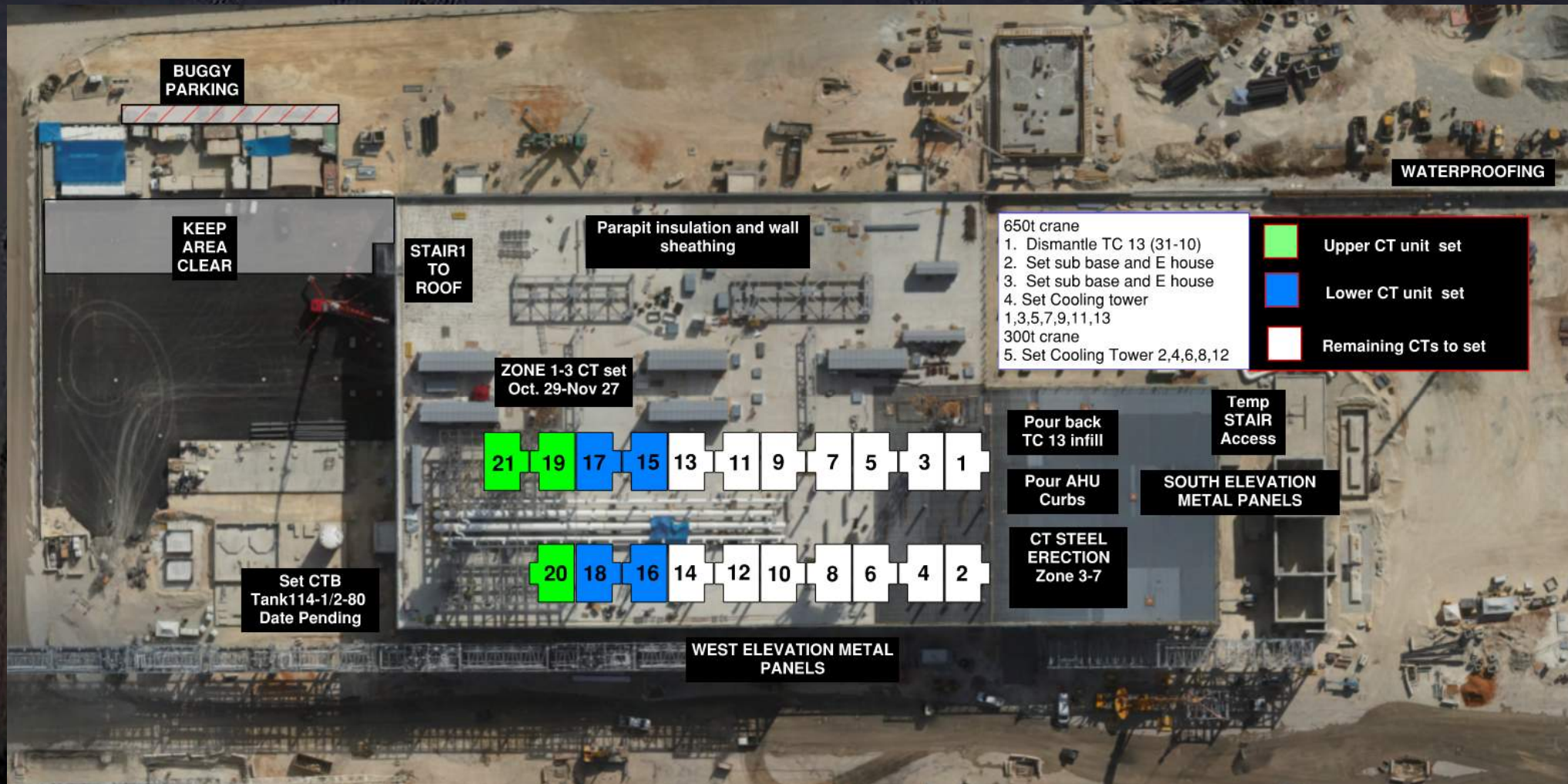


CUB 2- Load in and H&T

CUB 2 COORDINATION MAP



CUB 2 – EXTERIOR/ROOF



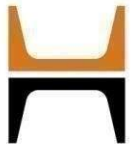
CUB 2 – Crane Logistics

PROPOSE TO ADD
12M JIB
EXTENSION TO
SUPPORT
COOLING TOWER
STEEL ERECTION

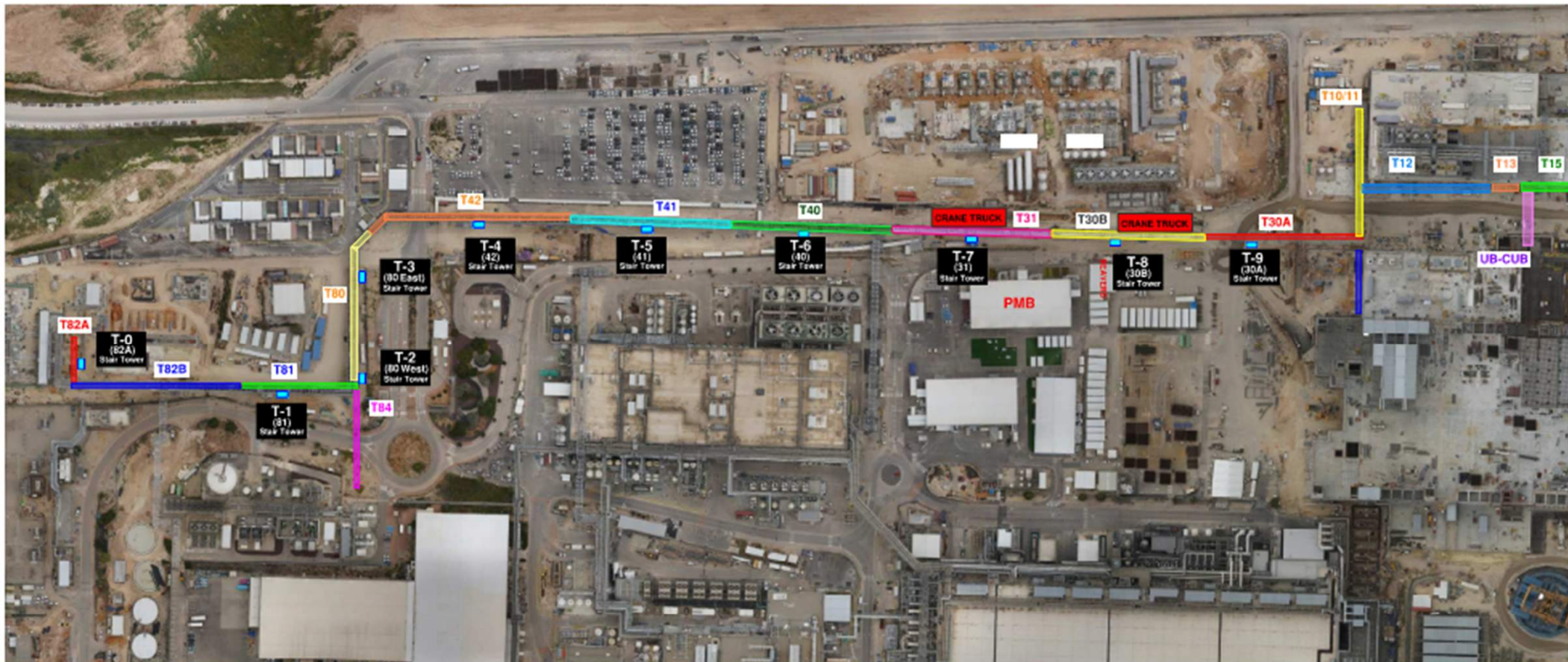
NEW RADIUS
SHOWN IN RED

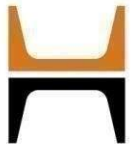
FOR REVIEW





HOFFMAN CONSTRUCTION COMPANY





HOFFMAN CONSTRUCTION COMPANY



T18 - Hoisting
Keep Area Clean

Module storage





HOFFMAN CONSTRUCTION COMPANY



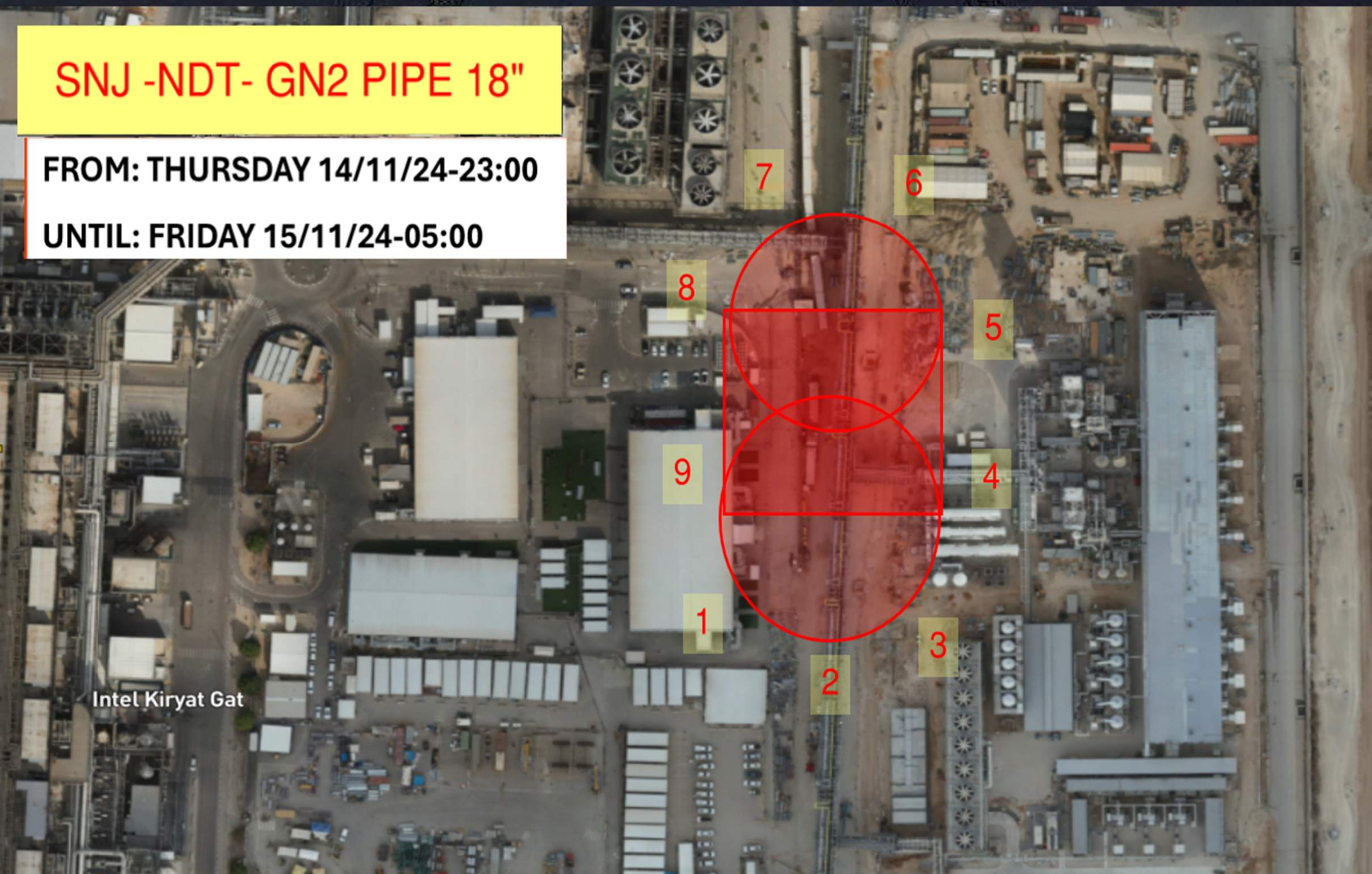
HOFFMAN
Sparrow



SNJ -NDT- GN2 PIPE 18"

FROM: THURSDAY 14/11/24-23:00

UNTIL: FRIDAY 15/11/24-05:00





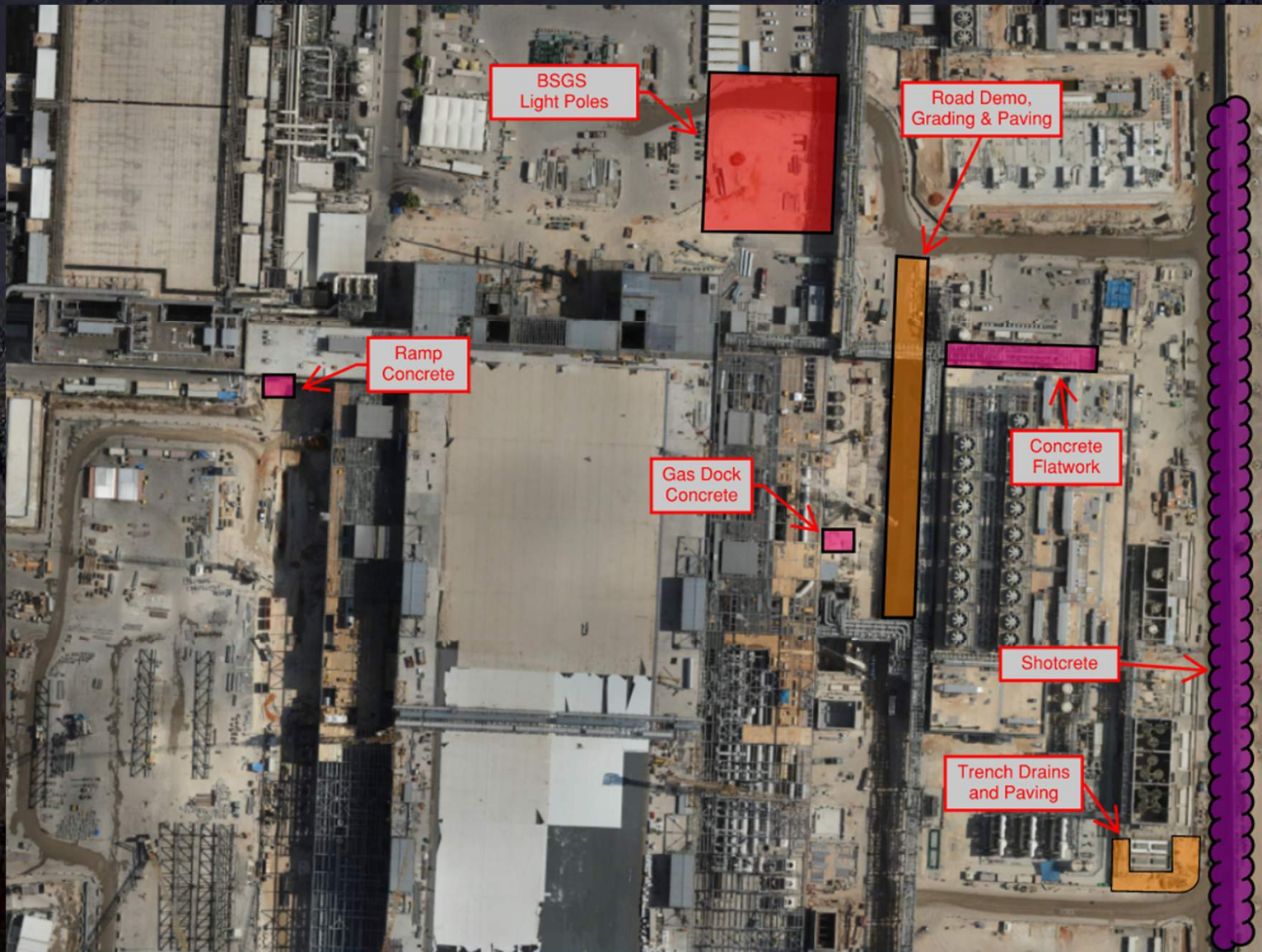
HOFFMAN CONSTRUCTION COMPANY



Daily Coordination Meeting

Site Logistics

North





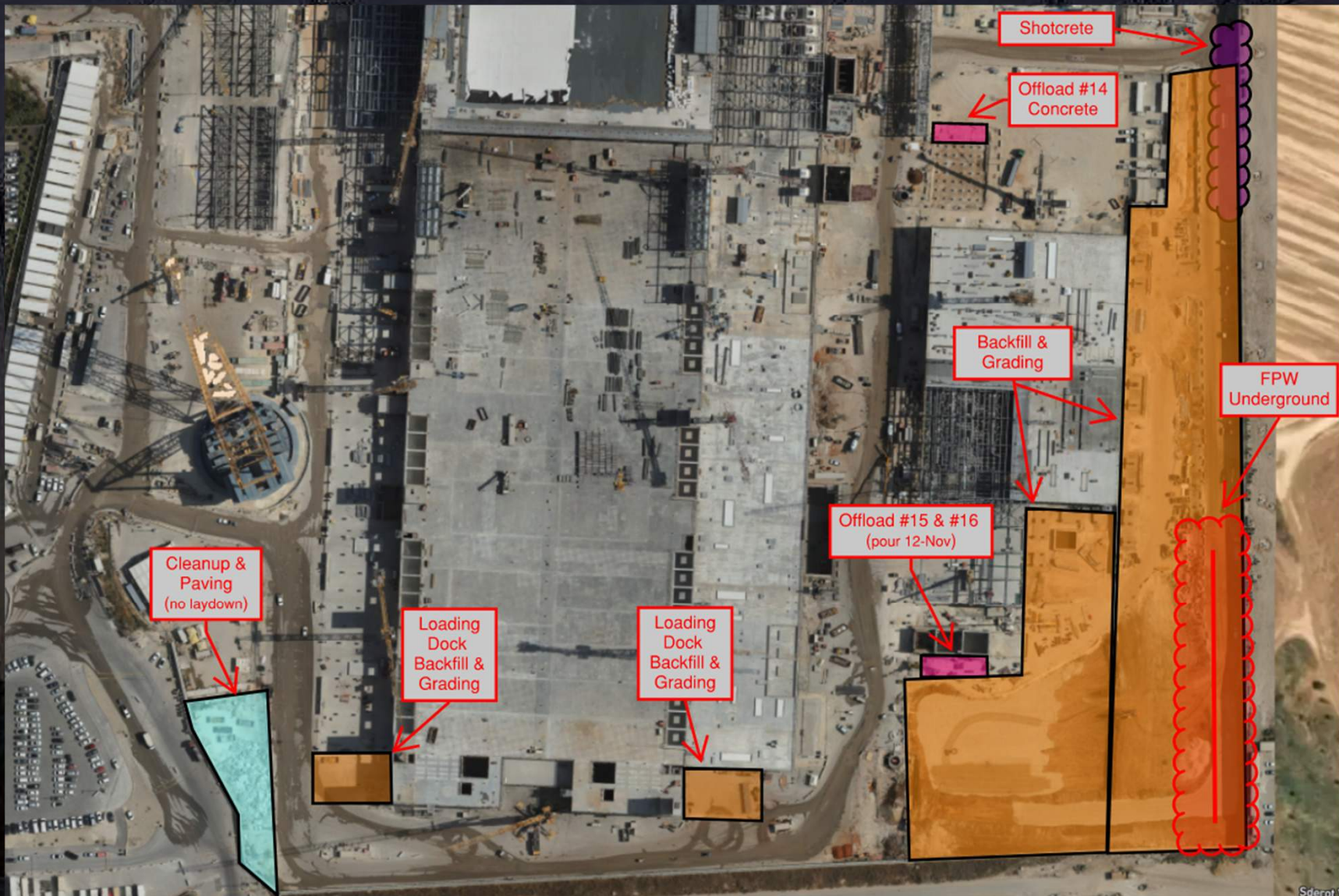
HOFFMAN CONSTRUCTION COMPANY



Daily Coordination Meeting

Site Logistics

South





LEARN FROM EVERYTHING

ALL INJURIES ARE PREVENTABLE | PEOPLE ARE THE SOLUTION | SUCCESS IS THE PRESENCE OF SAFETY

PROJECTEAGLE
2024



DATE/TIME OF INCIDENT: 11/06/2024, 6:30 AM

LOCATION Fab 52.2 Sub Fab CN-12
:

WHAT HAPPENED?

A 5' stick of 1" EMT conduit fell from the Sub Fab to the utility level through a floor opening. The conduit was being installed vertically and slipped from the employee's hand after they hit a strut cross bracing above the install location. The conduit fell straight down, hit their tool cart and kicked towards the floor opening and went through the mesh between the mid rail of the Unistrut guardrail system and the curb around the floor opening. The mesh was not secured at the bottom and folded up when the material hit it.

CURRENT SITUATION/CONTAINEMENT?

Floor opening is protected by guardrails and mesh.

ROOT CAUSE

Work Environment / Conditions of Work Area

WHAT CAN THE PROJECT LEARN FROM THIS INCIDENT?

Secure all material, verify effectiveness of protective measures.

WHAT CORRECTIVE ACTIONS ARE BEING TAKEN?

When working near a floor opening that is protected by a Unistrut guardrail system and mesh snow fence that is not secured at the bottom, a hard barrier or a piece of strut is to be added to the bottom of the mesh to keep it weighed down to secure material coming from the side. Barricade lower levels if there is a potential for material to drop there.





LEARN FROM EVERYTHING

PROJECTEAGLE
2024



ALL INJURIES ARE PREVENTABLE | PEOPLE ARE THE SOLUTION | SUCCESS IS THE PRESENCE OF SAFETY

DATE/TIME OF INCIDENT: 10/22/2024 8:40 PM

LOCATION Fab 52.1 Subfab BD 10

:

WHAT HAPPENED?

Employee was moving around in the racks placing clamps on a 1 ½" pipe. When the employee reached down to lift the pipe into place to apply the clamp, they felt a pop in their back. The employee did not feel pain and continued to work. The following morning when the employee woke up, they began to feel throbbing pain in their lower back.

CURRENT SITUATION/CONTAINEMENT?

The employee is currently work to tolerance. There was no damage to the facility.

ROOT CAUSE

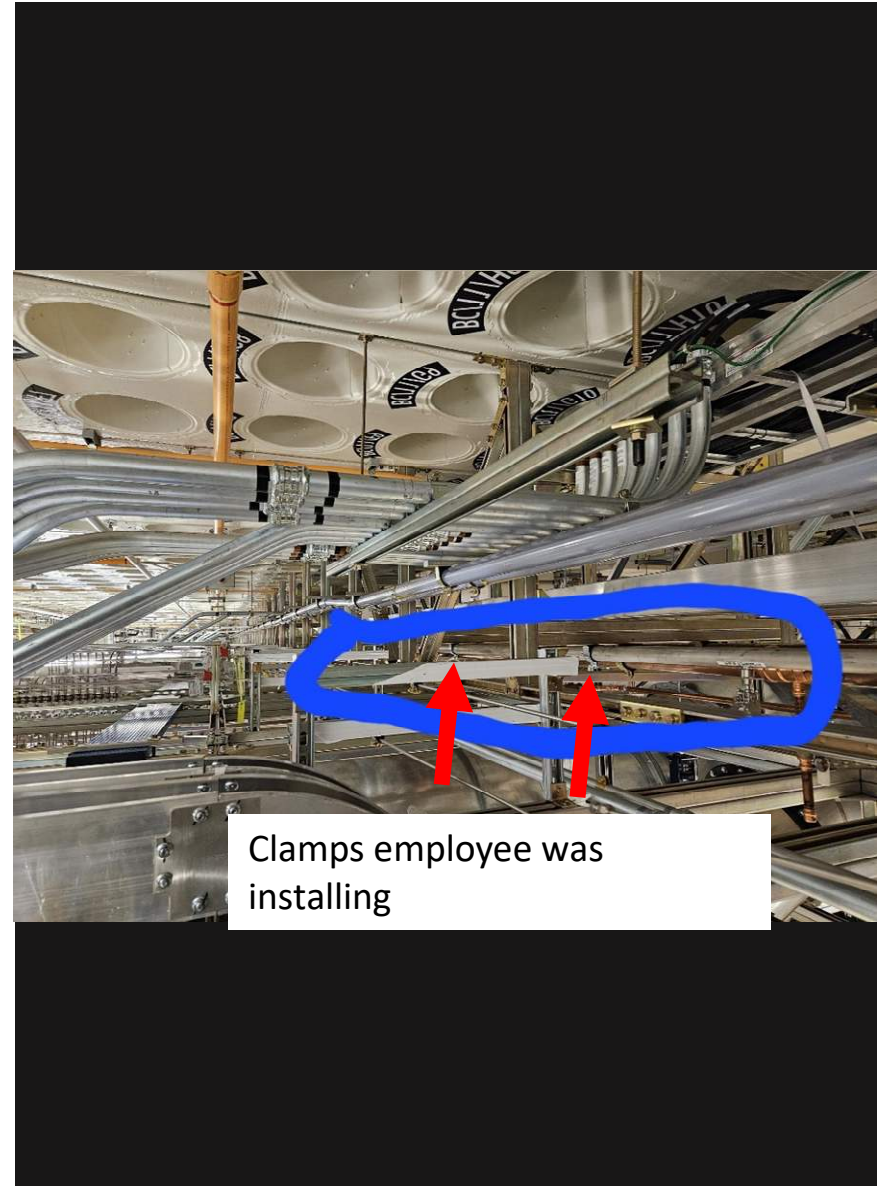
Work Environment / Confined Work Area

WHAT CAN THE PROJECT LEARN FROM THIS INCIDENT?

Support employees on recognizing hold points. Remember to stop work, pause, and re-evaluate location on work plan. Crews to be encouraged to use their stop work authority. Crews to engage with their Foreman and Safety to create a plan that incorporates ergonomics in congested work areas.

WHAT CORRECTIVE ACTIONS ARE BEING TAKEN?

- Conduct Toolbox Talk on the following:
 - Ergonomics
 - Incident/Injury Reporting
 - Document Retention
- Audit to confirm Foreman have completed the Risk Tolerance training to allow them to better evaluate areas.



HCC/EHS Weekend Work- 08.11.2024

White Board Meeting in Beavers at 06:30

Superintendents

Carter Miles 052-3376046

David Kanzevich 052-2045446

Nisim Asis 052-5762515

CSA CM

Idan Dahan 052-5949702

MEP

Paschalis Papadopoulos 052-2168215

Sean Ghee 052-6637316

Tony Dixon 052-3952068

Yaruslav Zemskich 052-2438340

Simon Garton 052-2770953

Sean Murphy 052-2563950

OSM

CX/QA

Cranes

Yossi Atias 052-3060790

Safety

- Safety Foreman- Adir Elmakayes- 054-7254767 Adir-Elmakayes@Hoffmancorp.com
- Safety Assistant- Hudifa Alshieck- 054-9408858 Hudifa-Elscheich@Hoffmancorp.com
- Safety Professional – Anan Ragbe- 058-7708886 Anan-Rajbi@Hoffmancorp.com

Subcontractor Weekend Work- 08.11.2024

FAB

Utility Level / Roof / Stair Shaft

Lesico

Ehs Michel 0526060223

Foreman Manoj 0522450258

Combe UPW

Ehs: Michael 0525506596

Foreman; Edward 0526419894

Elram

Foreman: Shlomo 0545551702

Ehs: shy 0523632132

Afcon electrical

Ehs Steven 0559129333

Foreman Perdit 0552742935

SK

Ehs Om 0542072285

Foreman Shy 0545654760

Subfab

Pach Taas

1w & 1e mars

Edi: 0547915874

Afcon E

Mars 1W + LSS rooms

Team Lead : Avi Eli 0526008487

Belfor

4w & 5w Lss rooms

Salame: 0546651886

Chemo

TTNW RSTM

Tommy: 0523759408

Clean Room

Talad – CR 1W – Graidings Install, 4E Grating Marcelo

0523540242 , Super Igor 0544509386)

Sig – 5W INT 4W, 3E Handrails (EHS Beni 0506232032, Super

Nodar 0546313261)

Elram – CR Level 9,25 line columns , upper shaft wall, TB-

TC/25 Columns (EHS Royi 0538312234, Super Bonio

0544236899)

Afcon – CR – 2E boxes 5W supports, 2W modules (EHS

Lokanath – 0559652398, Supervisor Pradeep - 0552742935)

Rolling Plains – INT NTT 5RA, Marshaft 3E, 5RA, MOD2 CA

CD17,24,10 (Super Cordin 0546594273, EHS Ovidiu

0546993648)

Chemo – INT -TNTNE/W Supports, 1E Mars prep for PT , 1W

Mars (EHS Lila - 0547886704, Supervisor Winai – 0528090588

)

Talent – CR Level 1E/2E – Superclean (Supervisor/EHS –

Hasan 0542662054)

Sela – 17-25 Line CRC (Supervisor Yoav 0548076339, EHS

Shmuel – 0506306031)

Subcontractor Weekend Work- 08.11.2024

PSSS

Pach Taas – Module bolting PSSS Roof, Lift 2 1-3P

Foreman – Vadim – 053-5552472

Safety – Offek – 050-2161429

Afcon Electrical – Cable Tray and Cable Pulling 1-5P UL and 1-3P Roof & Lift 2

Foreman – Charles – 055-2740190

Safety – Stevan – 055-9129333

Chemo A. – PSSS Roof and Lift 2 1-5P

Foreman – Maor – 050-955-9071

Safety – Rotem – 054-447-7112

W&W – SEQ 135, 138 (lift 3 3P)

Foreman – Willie – 052-6145521

Safety – Gary Lambert – 1-405-833-8910

EIram – 1P and 2P Exit Passage Ceiling

Foreman – ???

Safety – ???

Combe UPW – UPW Room Piping and Yard

Foreman – Boris – 054-8346412

Safety – Shimon – 054-5348843

Lesico – Roof Rack 2P

Foreman – Saju Paily – 052-7755967

Safety – Shilat – 050-05891373

SK Engineering – GL4 Rack UL, Lift 2 2P Piping

Foreman – Marcela – 054-5210133

Safety – Marzuke – 054-447-7112

WJG

W&W – Steel Erection 5J lift 2 Erection / Detail Work

Foreman: Chris Isaac 052 588 3215

Safety: Moshe 054 801 2959

Afcon – 2J Lift 3 Cable Pulling

Foreman: Montu 055 911 6973

Safety: Pradeep 055 274 2935

Chemo: 5J Lift 2 Piping

Foreman: Sergey 054 465 9688

Safety: Rotem 054 447 7112

Siding

SN

Victor- 0549220163

Ranpero- Roofing

Omar 0525959621

Subcontractor Weekend Work- 08.11.2024

CUB

Sela south yard:

Yoav - 0548076339

Shmuel - 0506306031

Sami Najami CUB 1+2:

Faiz - 0502227962

Husein - 0526917461

Alon - 0509895008

SK CUB 1+2:

Mario - 0548991051

Renato - 0548991623

Meptagon I+C CUB 1:

Sergey - 0537981592

Yuval - 0533346481

Chemo Aharon CUB 1:

Dudu - 0509808846

Leonid - 0548883878

Trestle

SNJ:

PIPES – 10 workers UB CUB+ T30

FORMAN

ATEF- 0542287499

SAFETY TRESTLE

BARAK MESIKA tel- 0542262530

GIS/NEY

Site

Derech Afar – Shotcrete wall

Supervision = Raed: 054-244203

EHS = Alex: 054-5403849

Olizki – Sweepers and water trucks, backfill CUB2 south, GUT road grading

Supervision = Or: 052-4917313

EHS = Ben: 052-4033565

Daily Coordination Meeting



14:00 Sign In