

Daily Coordination Meeting

General Topics:

- 17 Million Safety Working Hours BBQ Lunch on Tuesday (16-7-24) – **Volunteers Needed!**



HOFFMAN CONSTRUCTION COMPANY



17 MILLION SAFETY
WORKING HOURS
BBQ LUNCH!!!

16.07.2024



LUNCH WILL BE SERVED IN 4 DIFFERENT SHIFTS.
EACH SHIFT WILL HAVE A SPECIFIC WRIST BAND COLOR
(WILL BE PROVIDED BY THE SAFETY TEAM)

11:30 - 12:15 GROUP A (BLUE)
12:15 - 13:00 GROUP B (GREEN)
13:00 - 13:45 GROUP C (YELLOW)
13:45 - 14:30 GROUP D (ORANGE)
21:00 NIGHT SHIFT

See next page
for GROUP shift hour



LOCATION AND ENTRANCES
FULL PPE REQUIRED WHILE
WALKING THROUGH JOB SITE!!!

- *Group shift will be updated

| | |
|------------------------------------|---|
| A.S Barzel | A |
| Afcon Contracting Services | |
| Afcon Control and Automation Ltd | |
| Avi Cranes | |
| BCT PIPELINE PROCESSES LTD | |
| BRAND INSUSTRIAL LTD | |
| ByNet System Application Ltd | |
| Hoffman Structures of America, Inc | |

| | |
|--------------------------|---|
| Hoffman Construction | B |
| Stage Design Ltd | |
| Talad T.S LTD | |
| TEAM3 LTD | |
| TM TEAM LTD- Job service | |
| TM TEAM LTD | |
| TZUR ESH PROJECTS LTD | |
| W&W - AFCO Steel LLC | |
| INTEL | |
| JACOBS | |
| HB | |
| QA- AMTS, Q+,DPS | |

| | |
|-------------------------------|---|
| Carmel Bidud LTD (FAB + PSSS) | C |
| CHEMO AHARON LTD (FAB) | |
| COMBE LTD | |
| D&P Clean Room Ltd | |
| Derech Afar LTD | |
| DVIR.IE LTD | |
| E.L Fireproof LTD | |
| ELECTROSAFE LTD | |
| Electra Elevator | |
| EL-MORE ELECTRIC | |
| ELRAM PROJECT LTD | |
| ETC Systems LTD | |
| ES Entry Systems LTD | |
| GLOBUS WORLDWIDE LOGISTICS | |

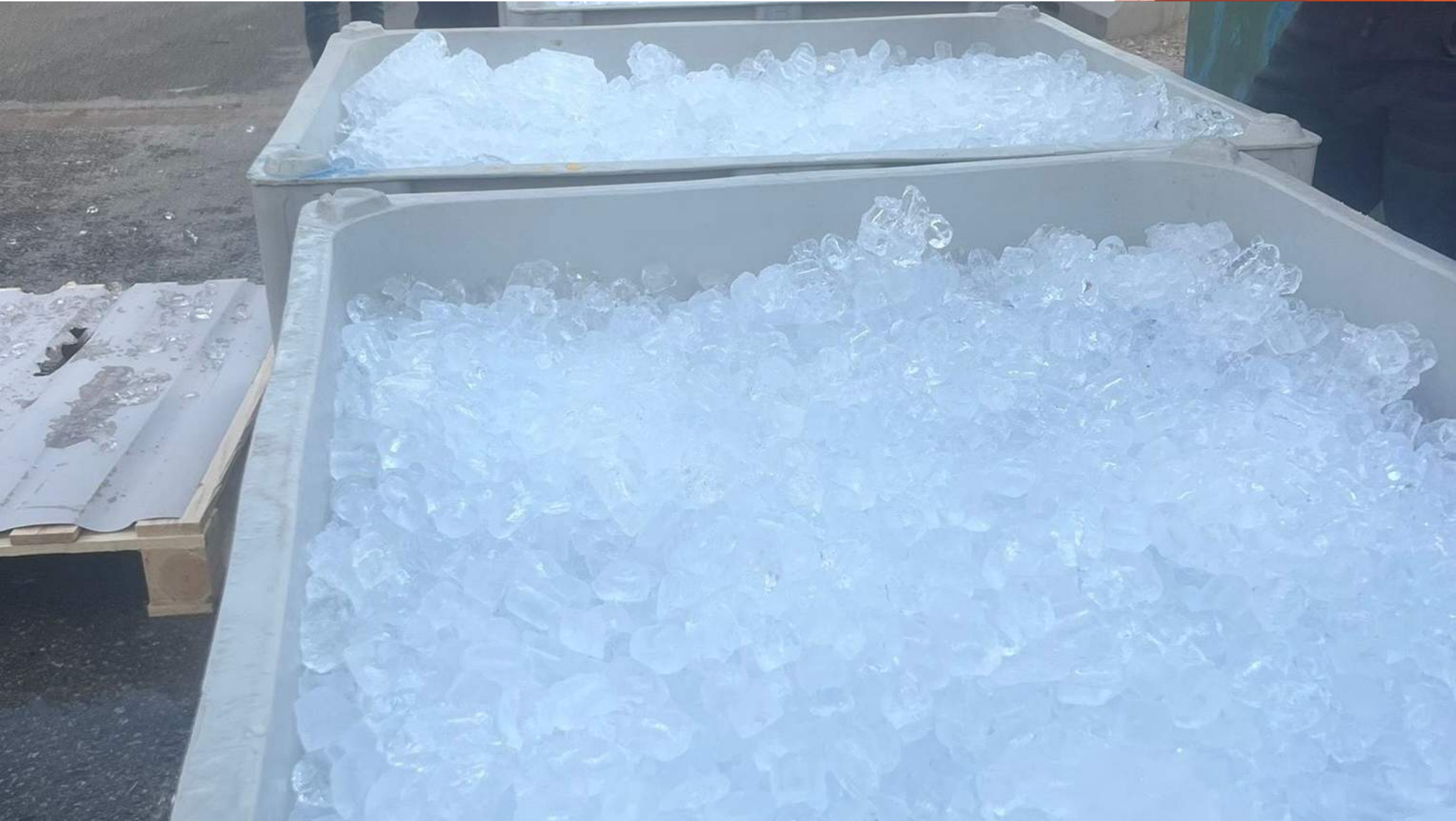
| | |
|--|---|
| HYG STEEL 1990 LTD | D |
| Katz Arie Stainless Steel | |
| Lesico LTD | |
| MALCHIMIM BADAROM | |
| MEGASON ELECTRONIC & CONTROL 1987 LTD | |
| Meptagon LTD - I&C/ LSS | |
| Newco - Tec LTD | |
| Olizki Infrastructures LTD | |
| ORIAYN ADVANCED TECNOLOGY SYSTEMS, LTD | |
| Pach Taas LTF (Ashkelon) | |
| Ranpro LTD | |
| RESHATOT BE'ER SHEVA LTD | |
| Rolling Plains Constriction Inc | |
| Sami Najami Engineering & Project LTD | |
| Sela Industrial Maintenance 2006LTD | |
| Shuv Eli Electric Engineering Ltd | |
| Siemens Industrial LTD | |
| SIG Industrial LTD | |
| SK ENGINEERING & PROJECT (CUB) | |
| Skyline Cranes& Technologies | |

Please email me to sign up to Volunteer to serve
Rebecca-WeinsteinAttar@Hoffmancorp.com &
Cody-Baumann@Hoffmancorp.com

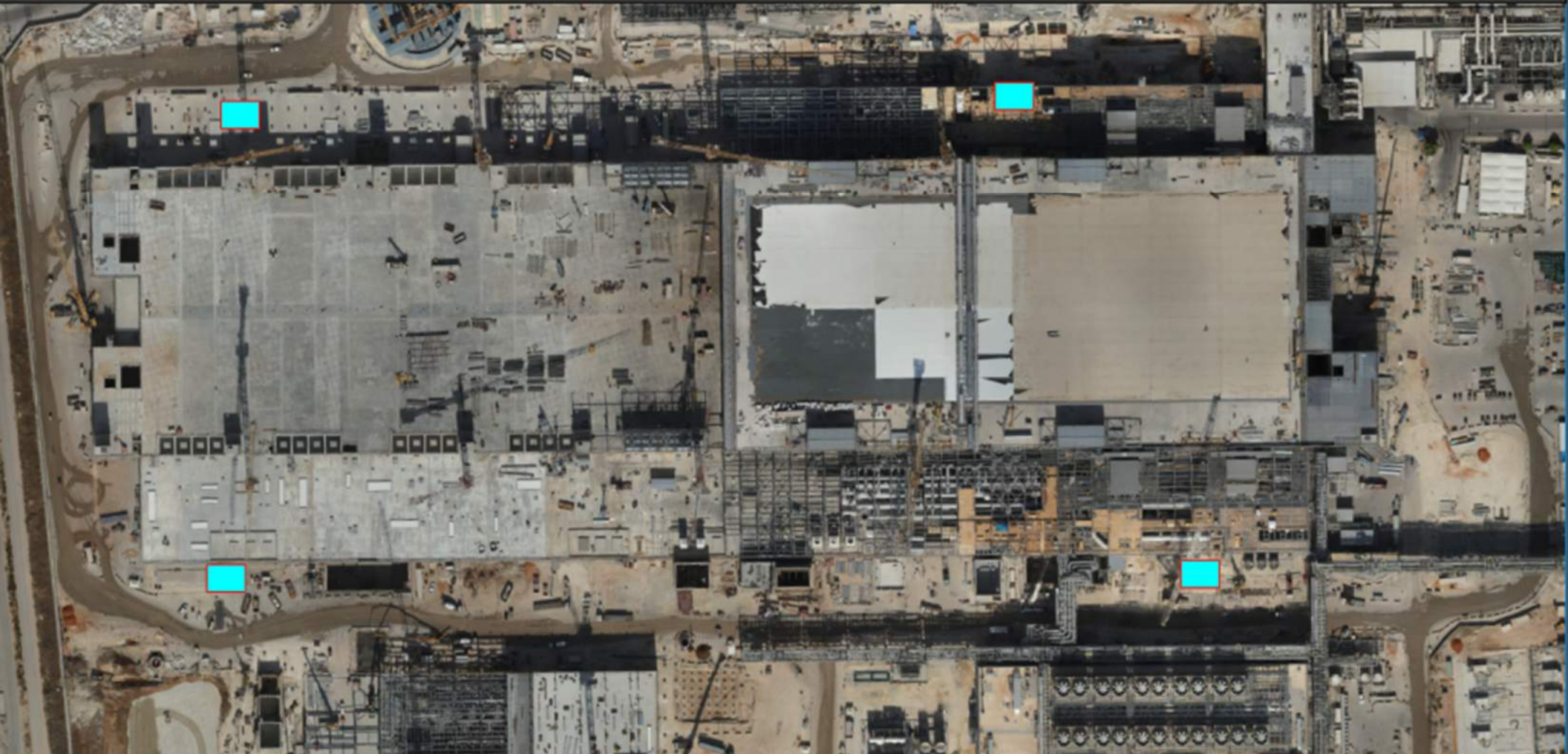
Job Services

Work Week 29

- ▶ Bottle water stations
- ▶ Broken bathrooms



Bottle Water Stations







Daily Coordination Meeting

Mod 1 Fab



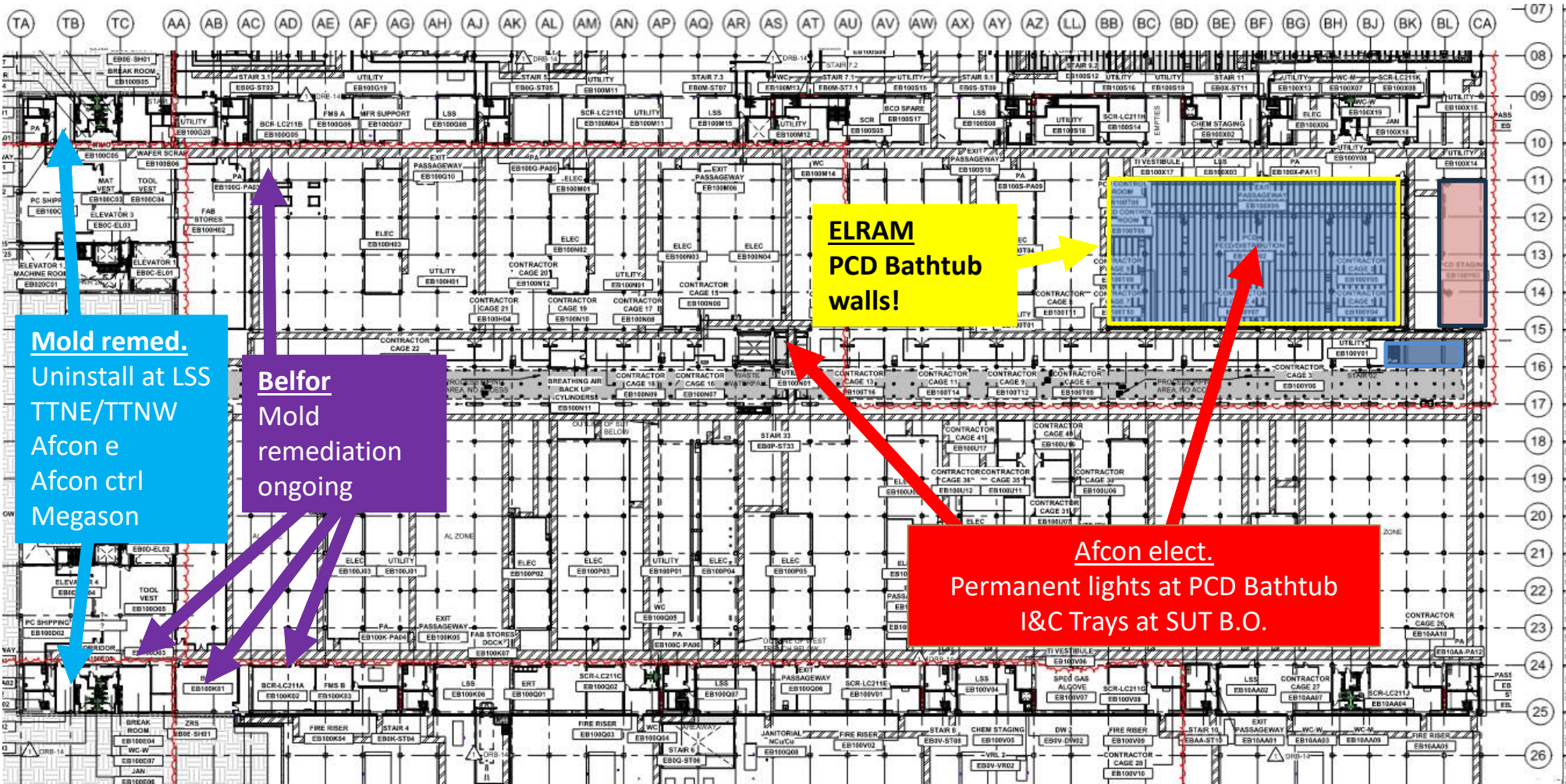
Daily Coordination Meeting

CUB 2



BCCA Blast Walls @
03:00

UTILITY LEVEL MOD1



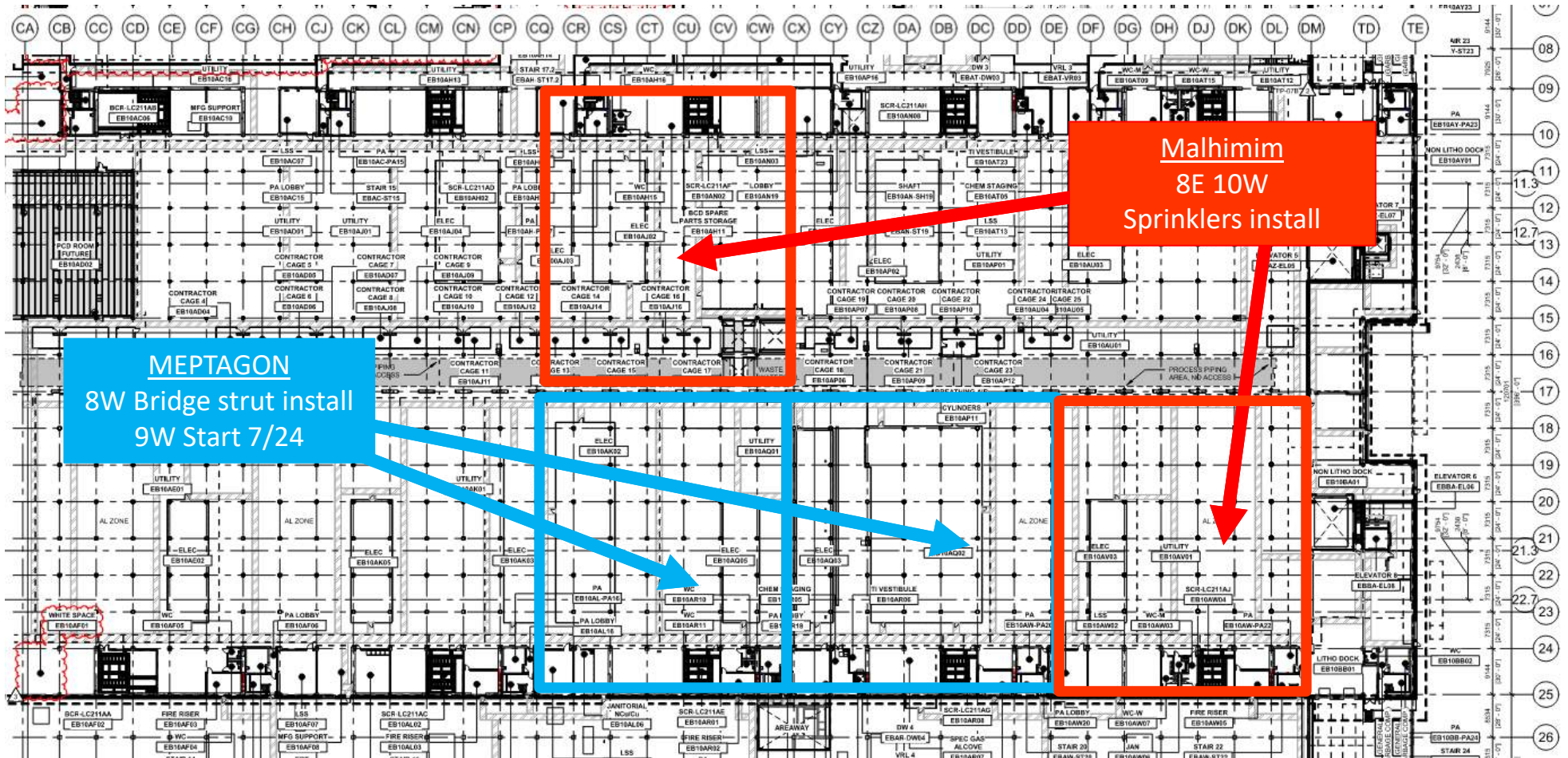
Mold remed.
Uninstall at LSS
TTNE/TTNW
Afc on e
Afc on ctrl
Megason

Belfor
Mold
remediation
ongoing

ELRAM
PCD Bathtub
walls!

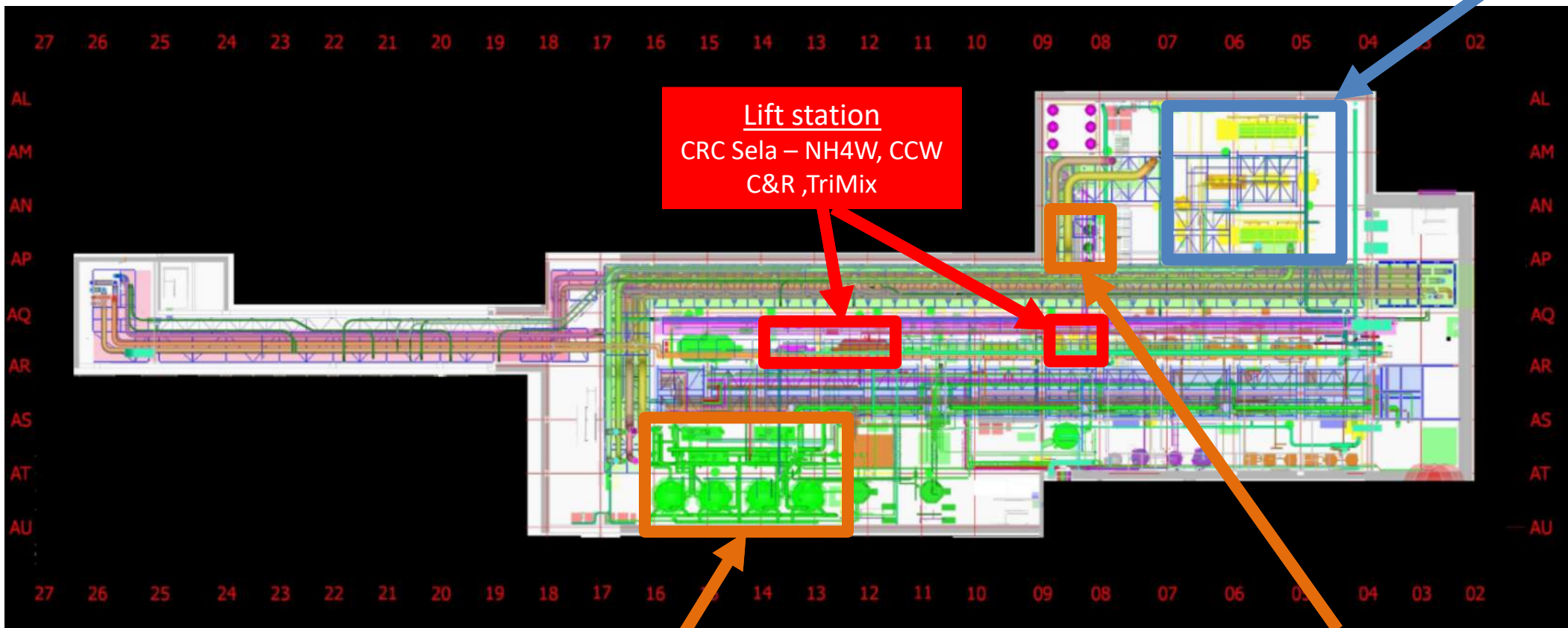
Afc on elect.
Permanent lights at PCD Bathtub
I&C Trays at SUT B.O.

UTILITY LEVEL MOD2



SUT 38.1 LEVEL

SKE
Safety shower's
Need Bulletproofing



Lift station
CRC Sela – NH4W, CCW
C&R ,TriMix

[Red box highlighting lift station area]

[Red box highlighting lift station area]

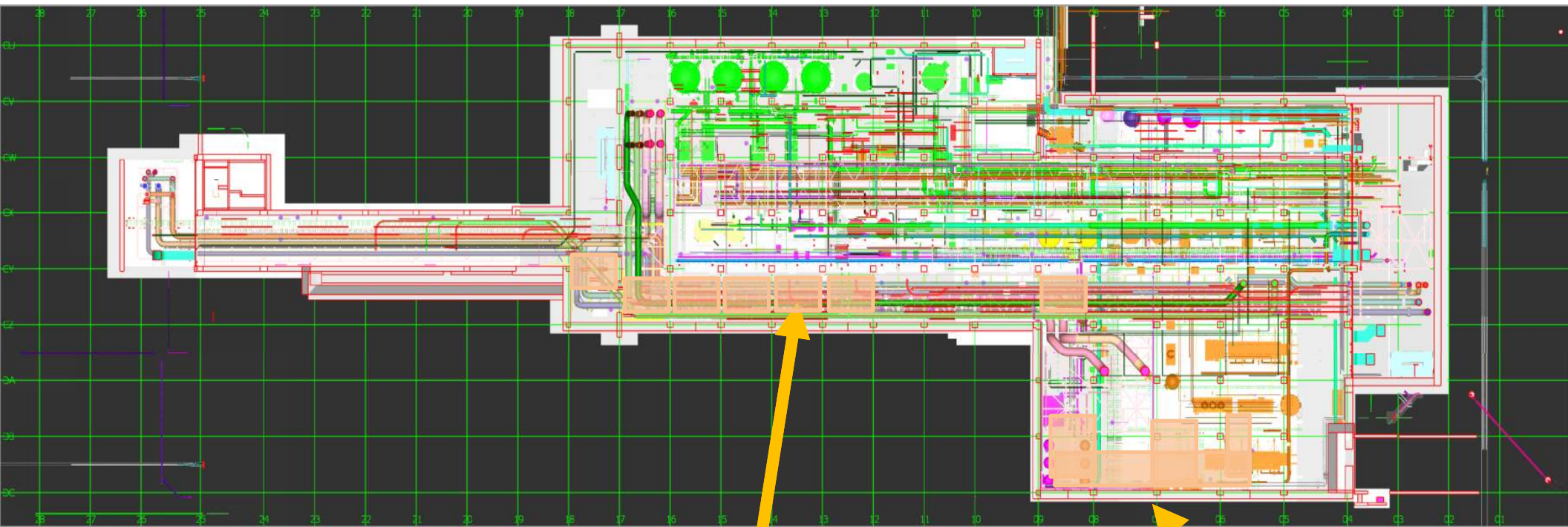
[Orange box highlighting piping connections area]

[Blue box highlighting safety shower area]

AWN-
Piping Connections.

SWS
Hx hock up

SUT 38.2 LEVEL



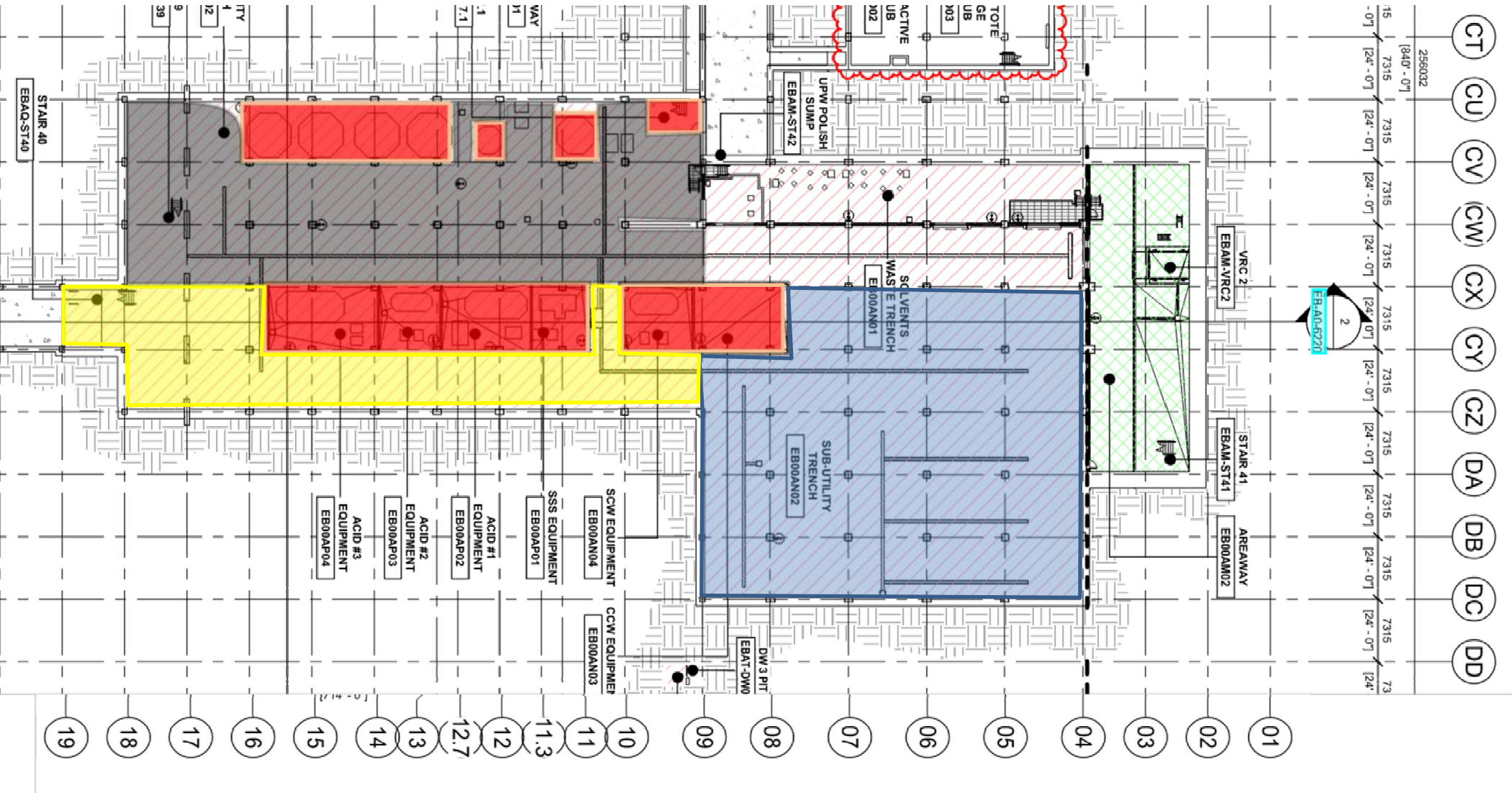
SKE
H&T
CRW
Move-In date ?

Vesda
H&T
Move-In ??

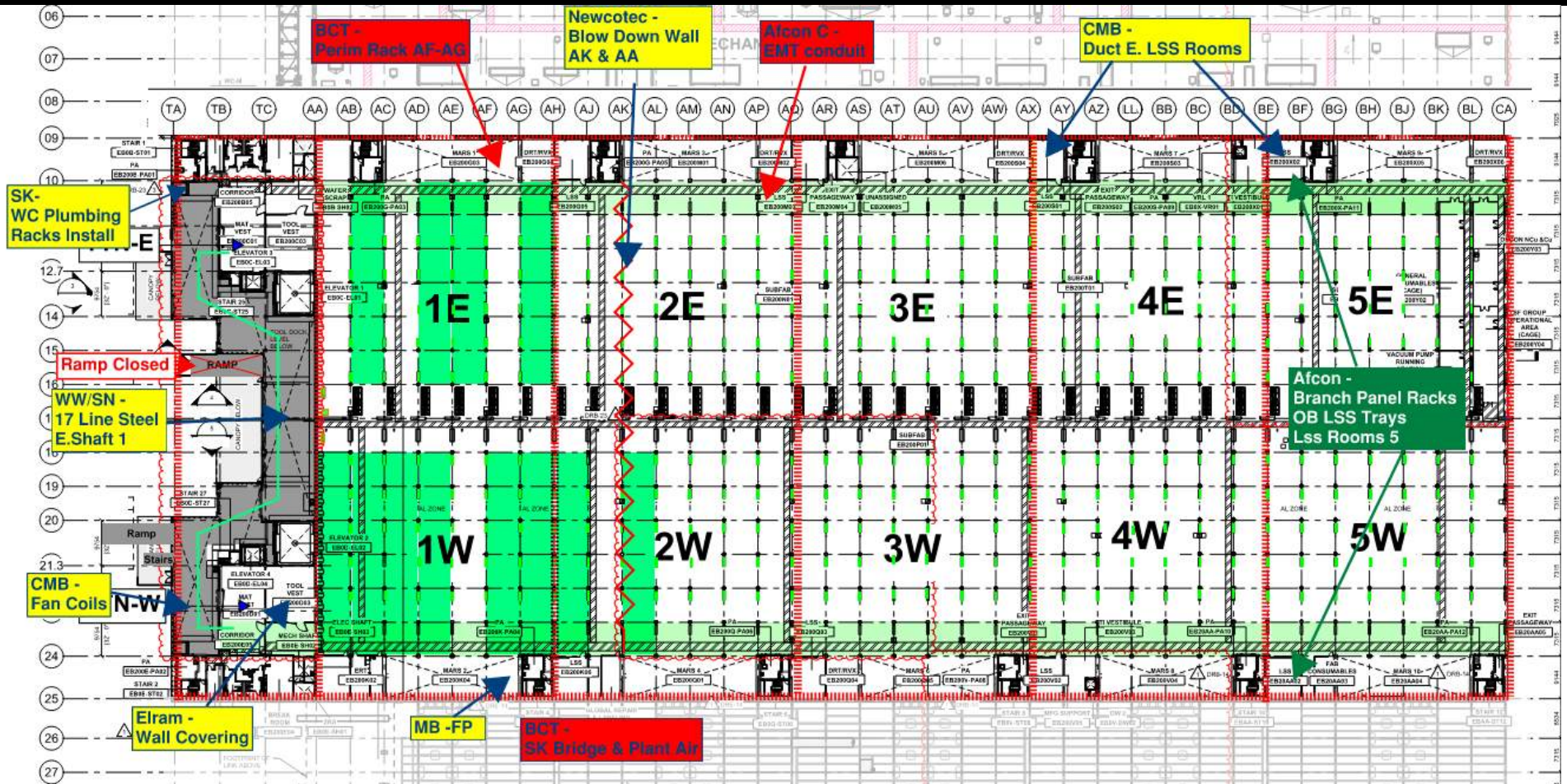
1A Rack
Lifting

8 Rack
Pending
Martials

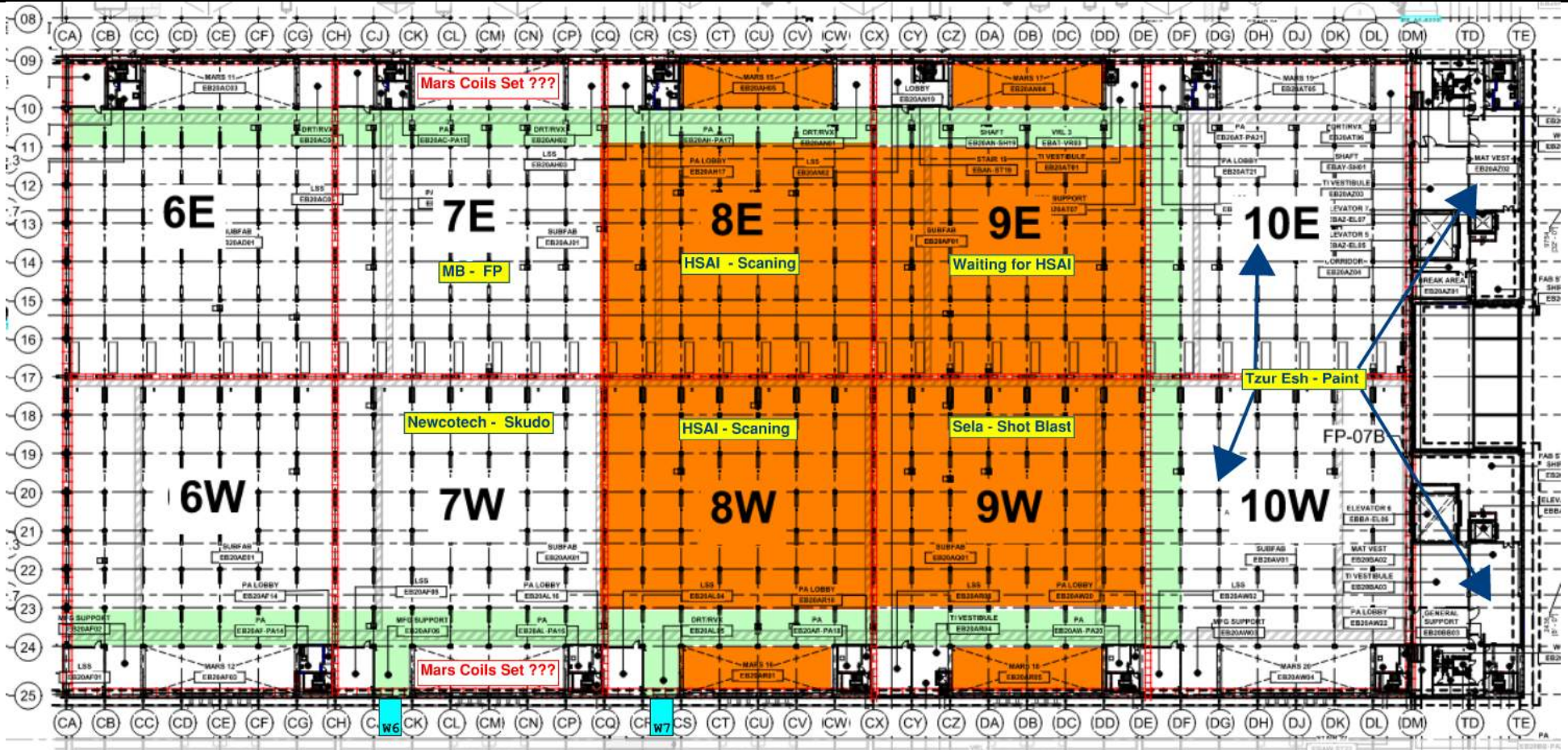
SUT 38.2 LEVEL
CRC Plan



SUBFAB BUILDOUT MOD 1



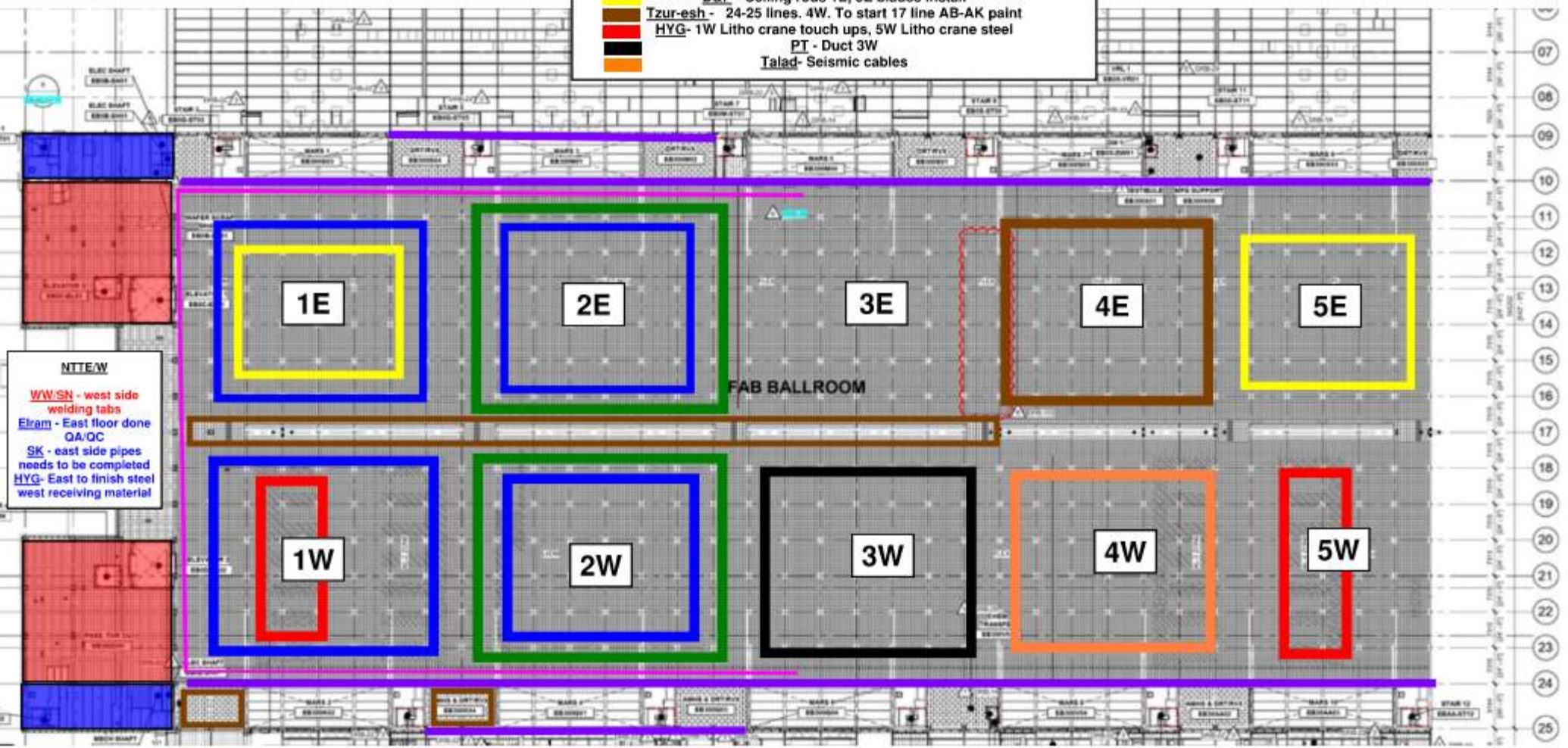
SUBFAB BUILDOUT MOD 2



SUBFAB BUILDOUT



- CR level:
- Afcon - Cable trays, modules and stickers 1W,2E, 2W
 - MB- 1E drops, 1W pipes. 2E-2W needs to start
 - Elram - 10, 24 columns fix. 9,25 columns on going
9,25 line columns wrapping
 - Meptagon - Zero tolerance pipes 1E,1W, 3E
 - D&P - Ceiling rods 1E, 5E blades install
 - Tzur-esh - 24-25 lines. 4W. To start 17 line AB-AK paint
 - HYG- 1W Litho crane touch ups, 5W Litho crane steel
 - PT - Duct 3W
 - Talad- Seismic cables



NITE/W

WW/SN - west side welding tabs

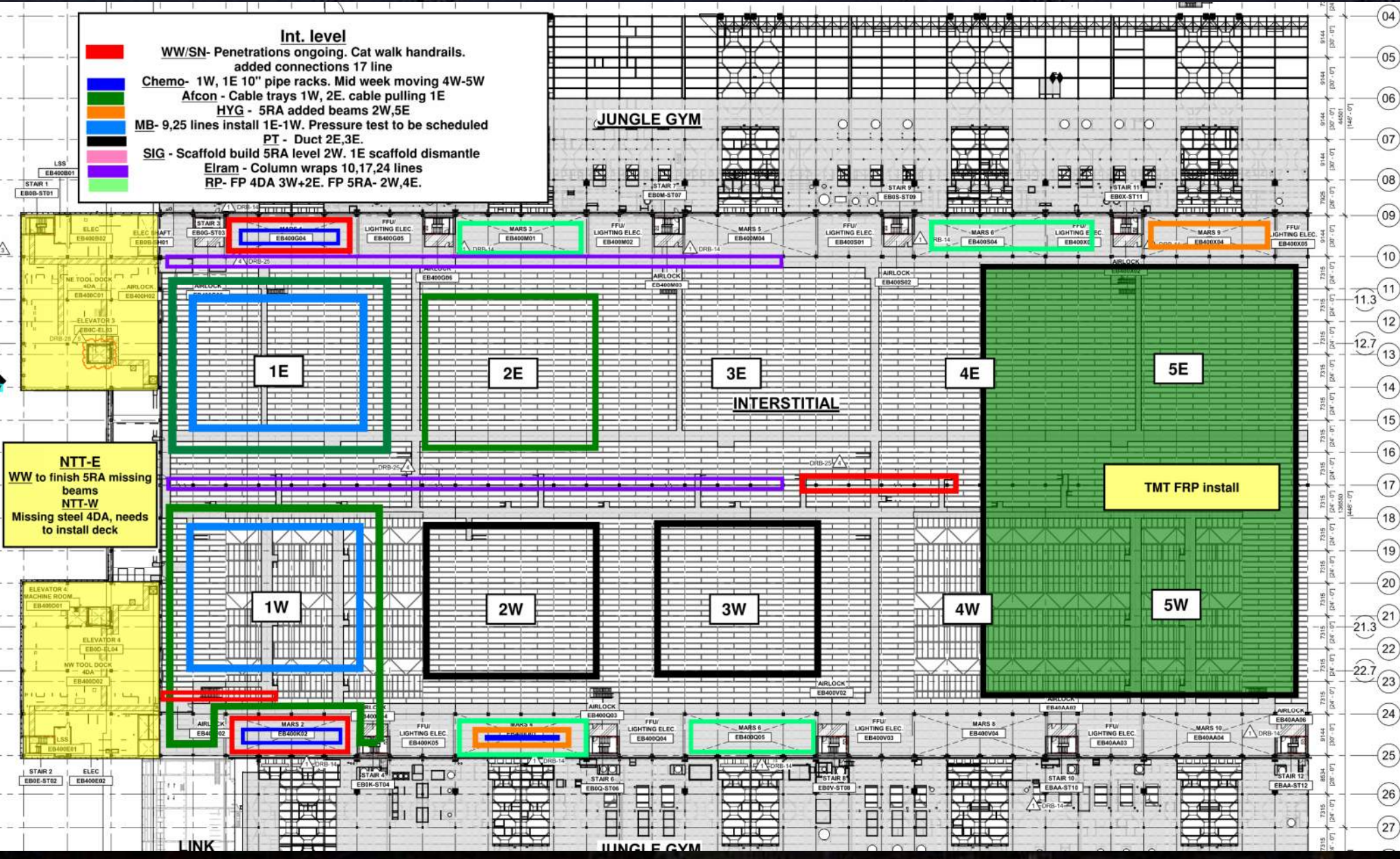
Elram - East floor done QA/QC

SK - east side pipes needs to be completed

HYG - East to finish steel west receiving material

Int. level

- WW/SN- Penetrations ongoing. Cat walk handrails. added connections 17 line
- Chemo- 1W, 1E 10" pipe racks. Mid week moving 4W-5W
- Afcon - Cable trays 1W, 2E. cable pulling 1E
- HYG - 5RA added beams 2W,5E
- MB- 9,25 lines install 1E-1W. Pressure test to be scheduled
- PT - Duct 2E,3E.
- SIG - Scaffold build 5RA level 2W. 1E scaffold dismantle
- Elram - Column wraps 10,17,24 lines
- RP- FP 4DA 3W+2E. FP 5RA- 2W,4E.



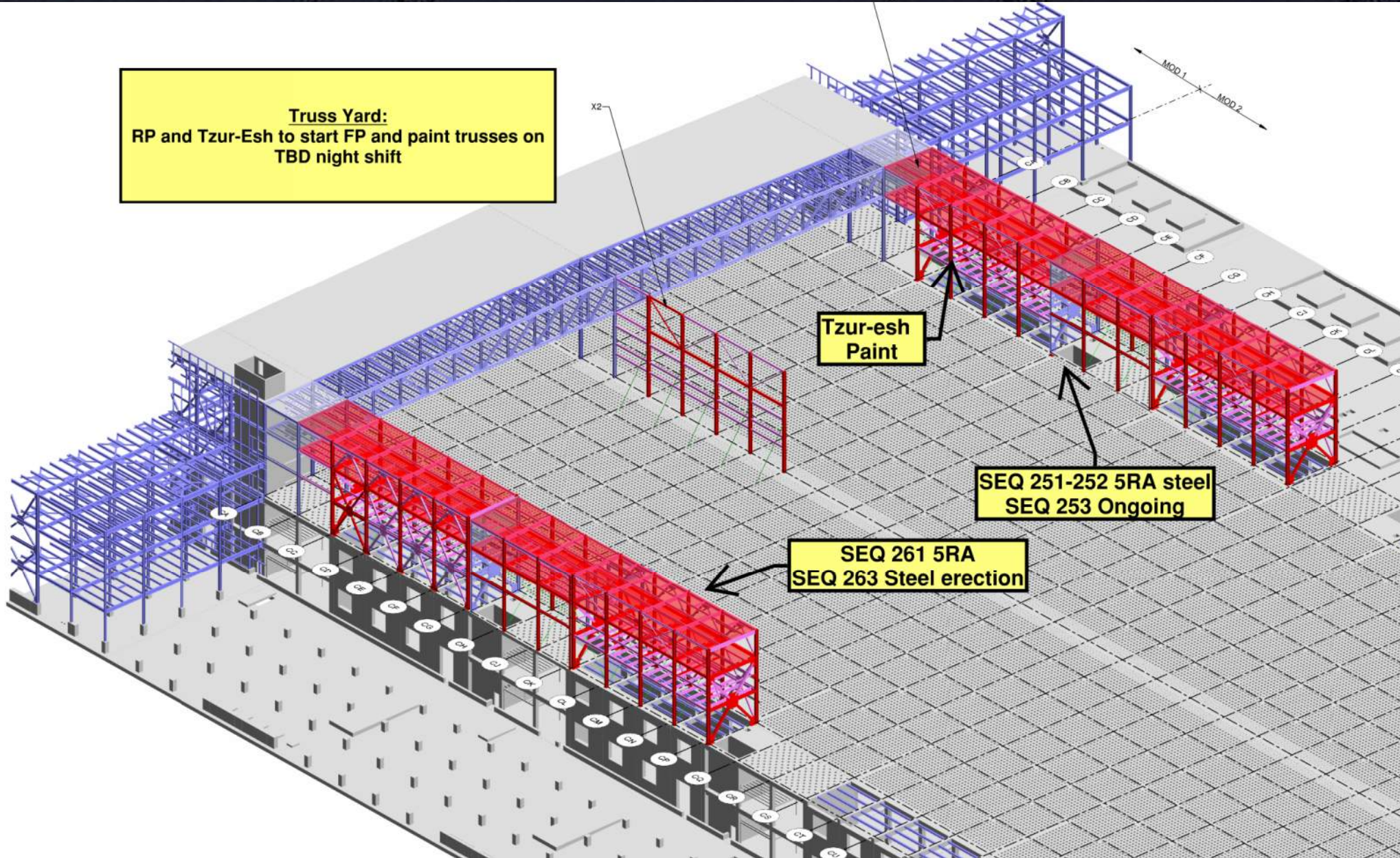
NTT-E
 WW to finish 5RA missing beams
 NTT-W
 Missing steel 4DA, needs to install deck

TMT FRP install

LINK

JUNGLE GYM

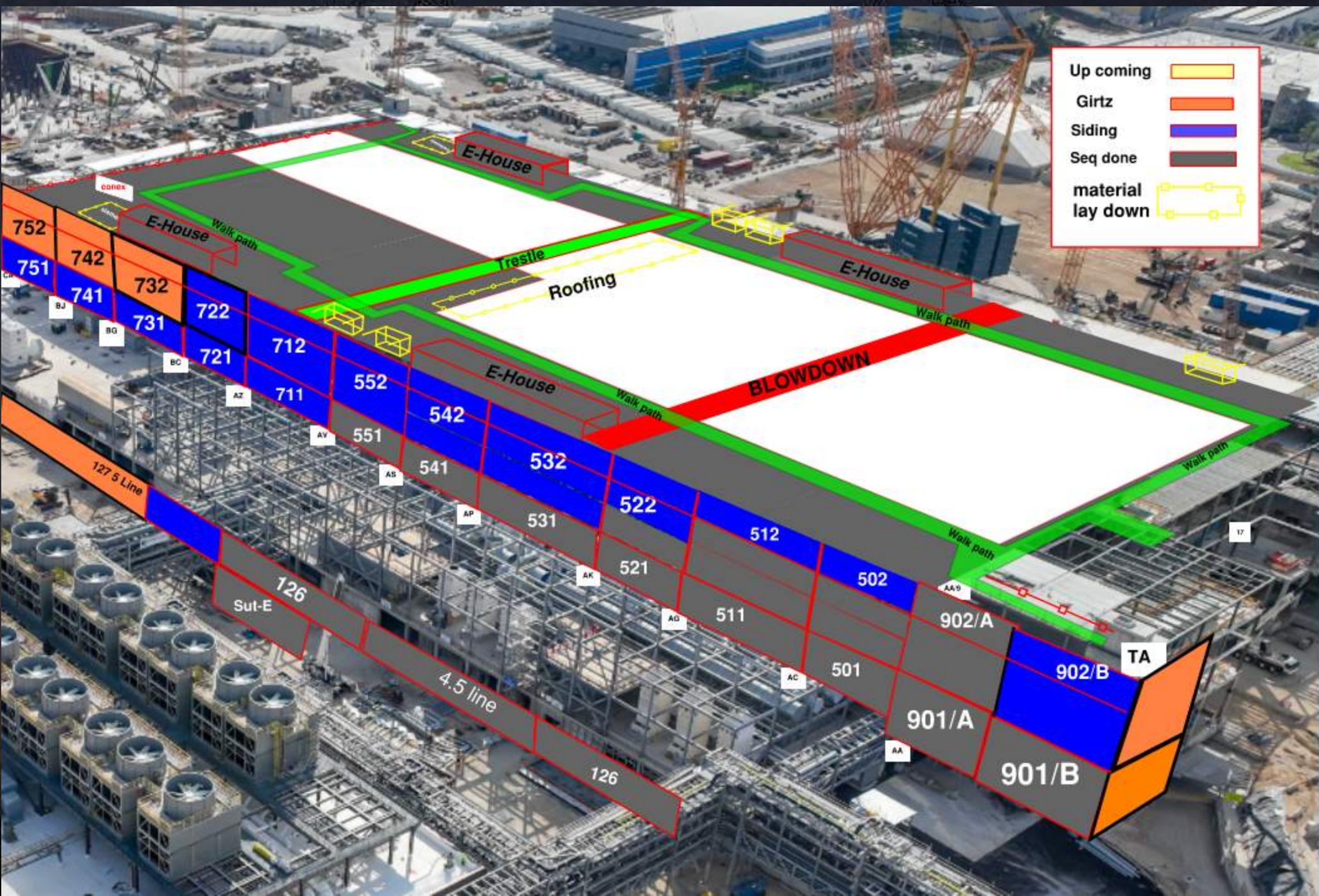
Truss Yard:
RP and Tzur-Esh to start FP and paint trusses on
TBD night shift

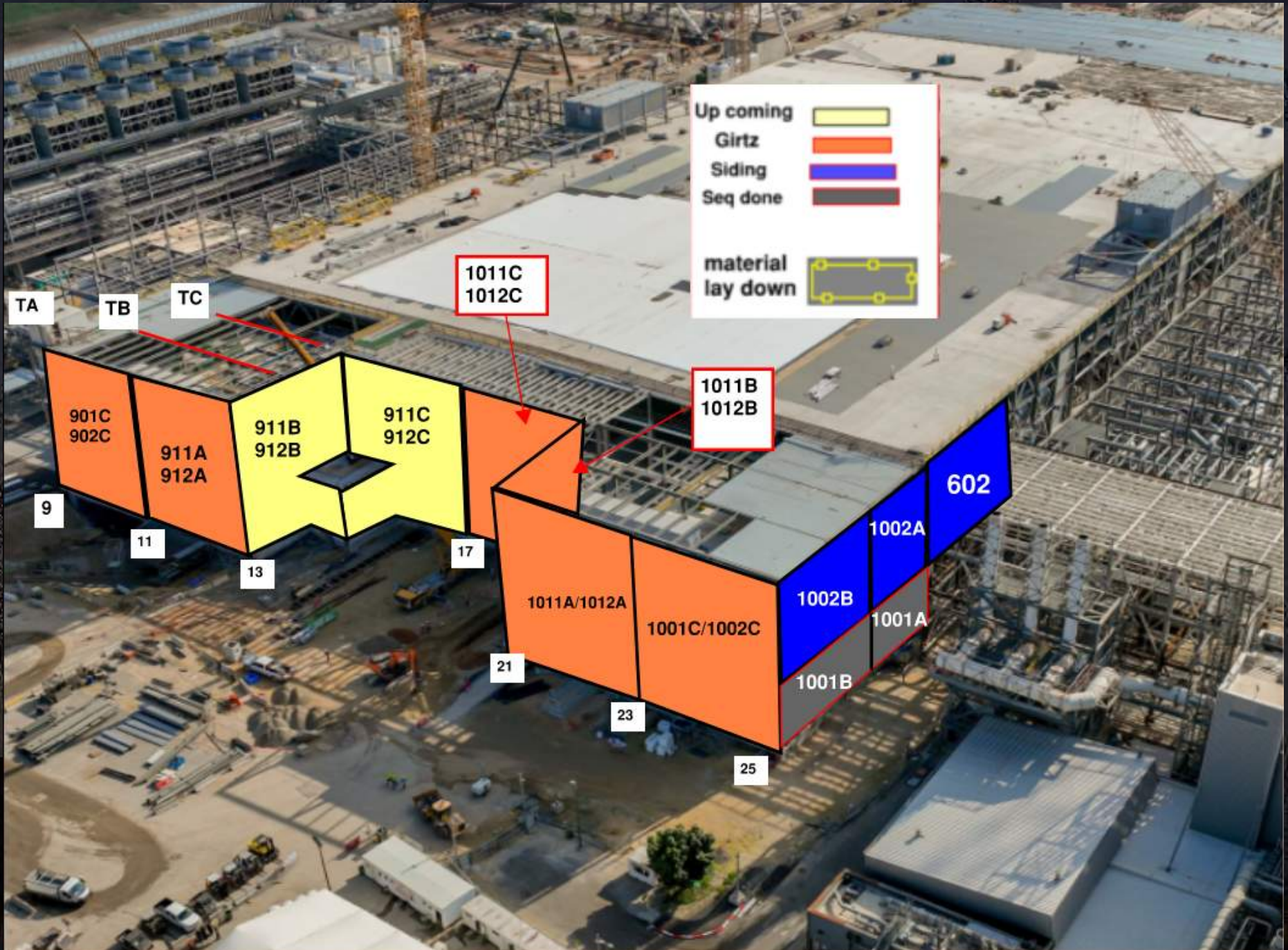


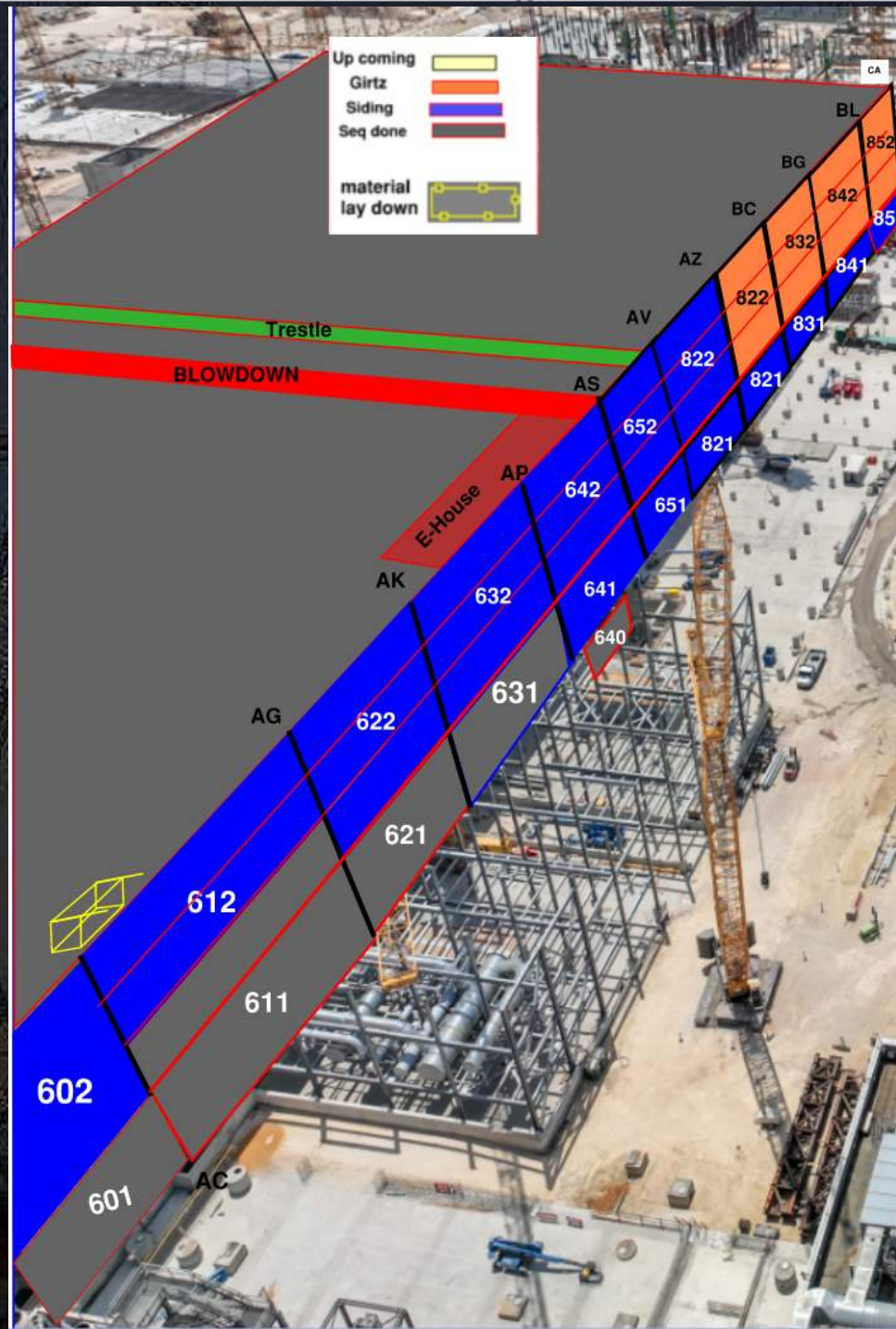
**Tzur-esh
Paint**

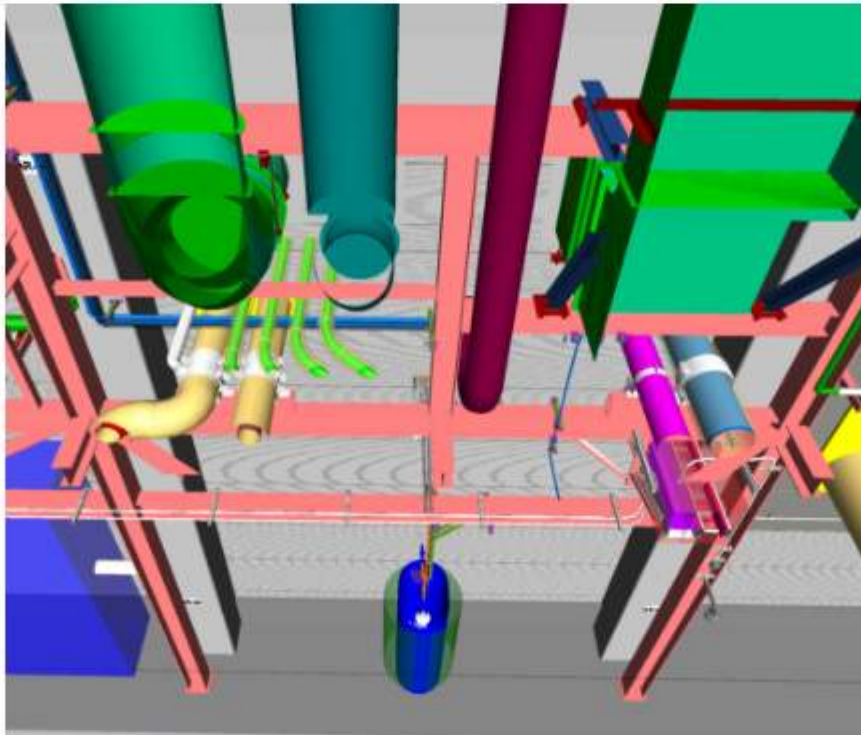
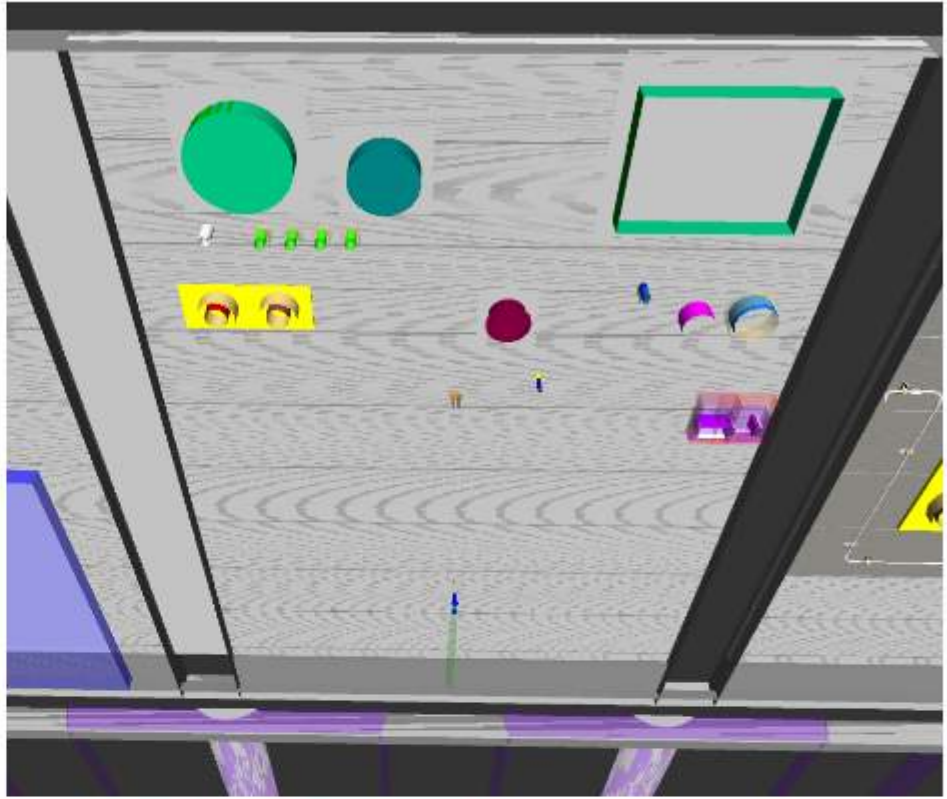
**SEQ 251-252 5RA steel
SEQ 253 Ongoing**

**SEQ 261 5RA
SEQ 263 Steel erection**





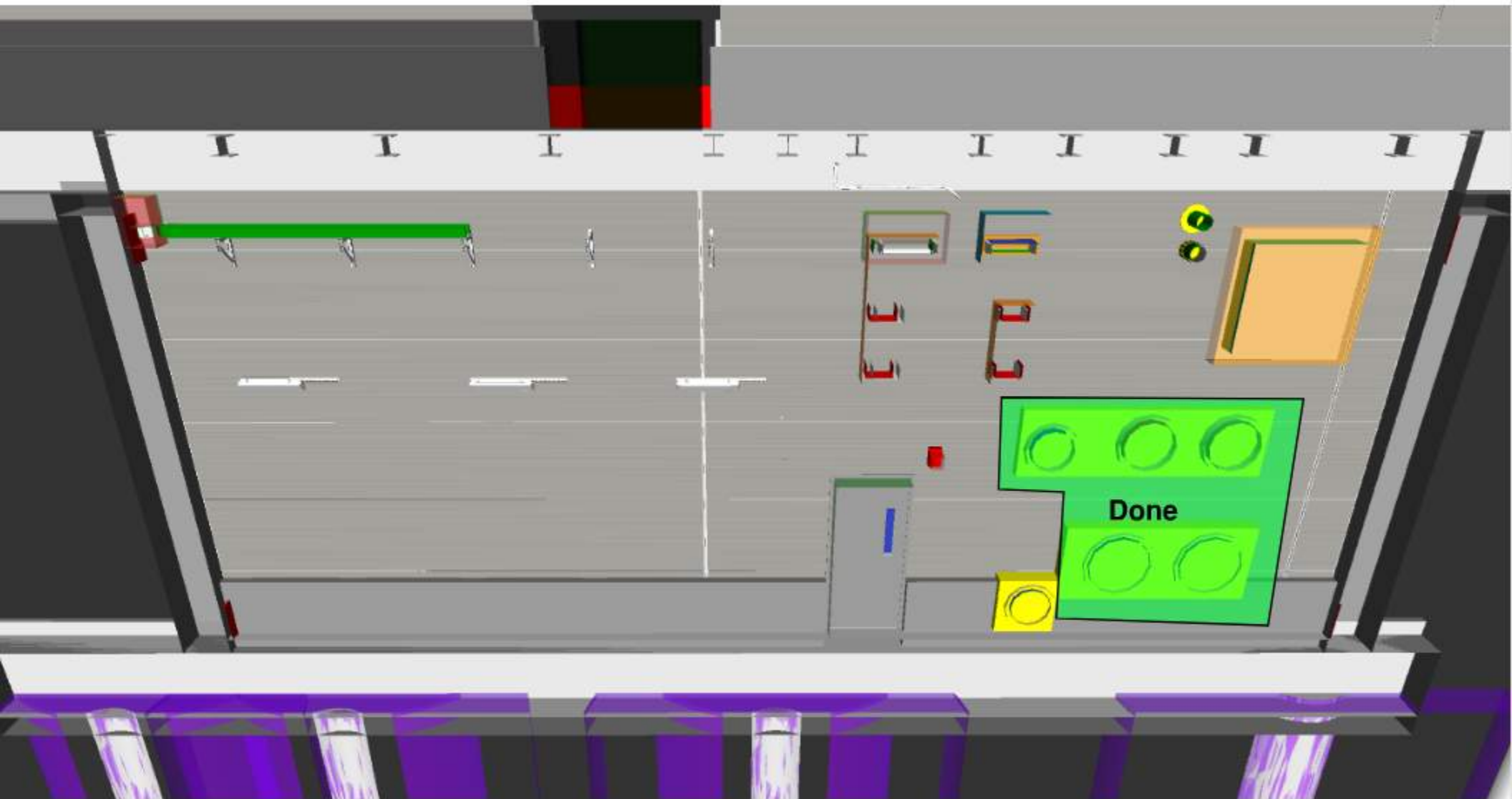




E-SUT1



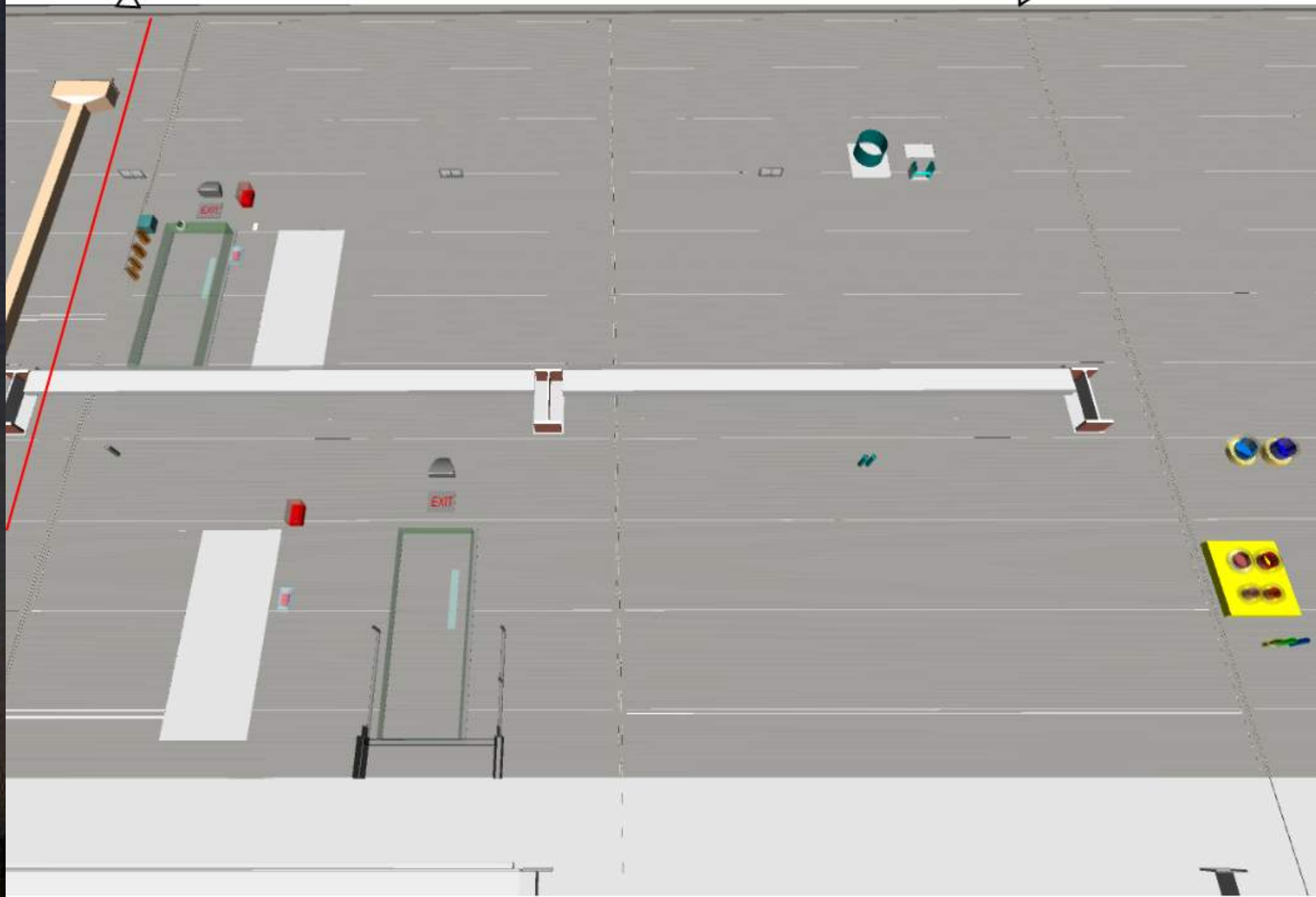
W-SUT1



AC/9

502

AA/9



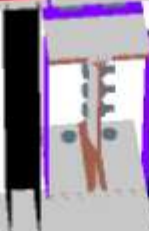
AF-09 and AN/9

SKE



Lift 1

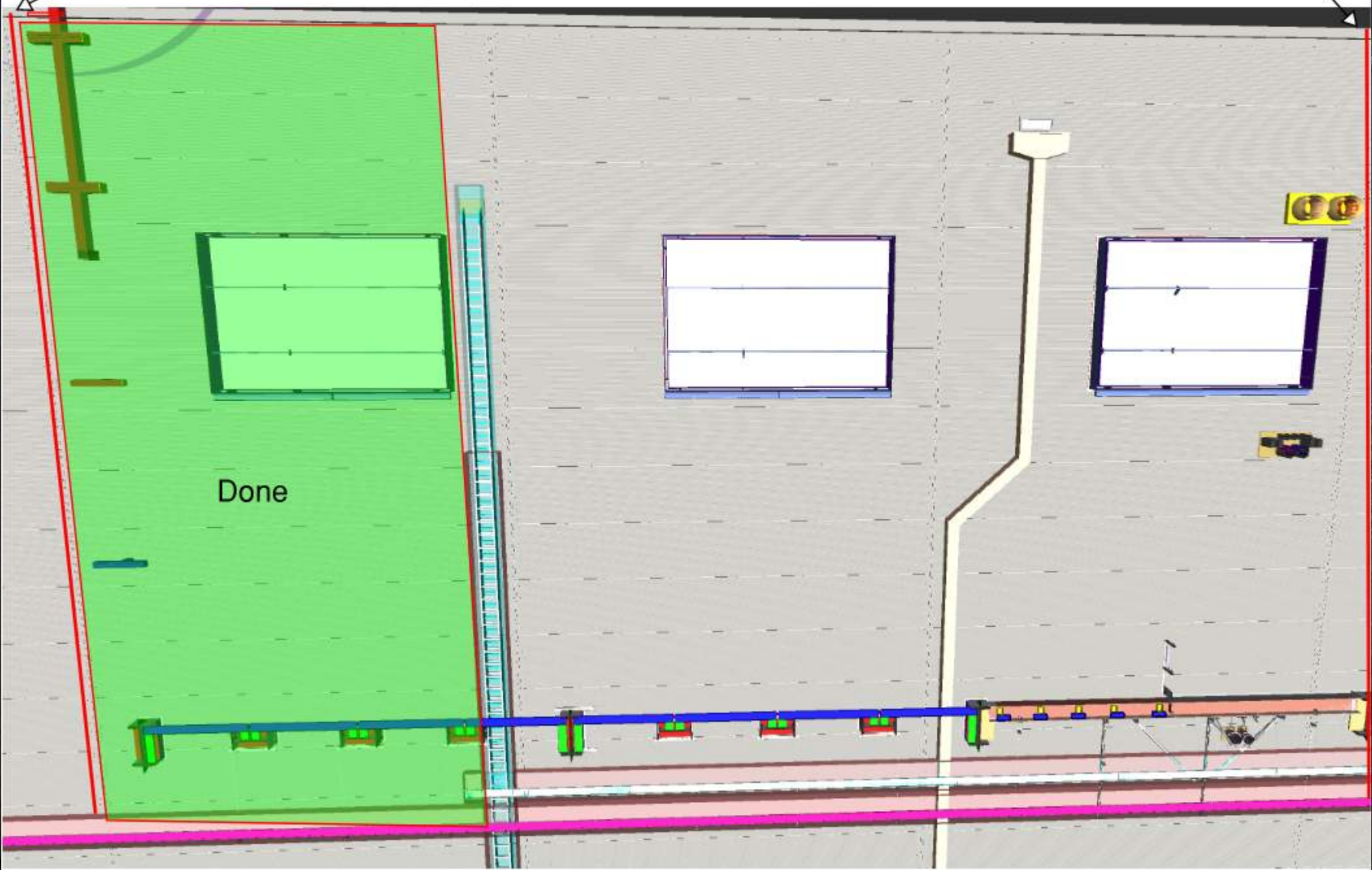
AF-09



AD/25

AG/25

612 lift 2



Siding Penetration Request Form

Siding Penetration Request Form



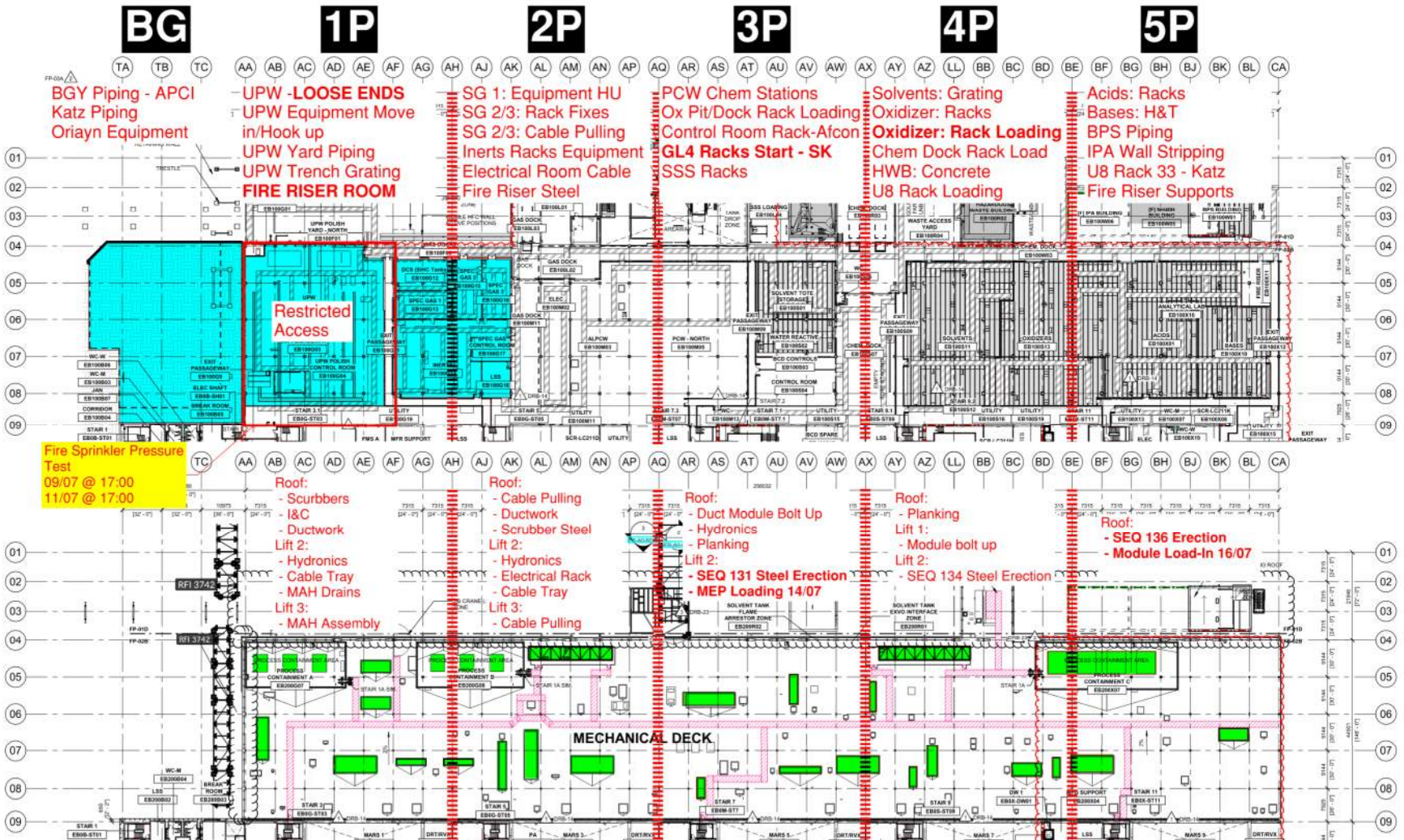
Subcontractor must fill out and submit all required cells in order to get a penetration cut through the siding.

A screenshot of a web form titled "Siding Penetration Requests" on a yellow background. The form is a SmartSheet form with various input fields and checkboxes. Red arrows point from text annotations on the right to specific fields in the form. The annotations include: "What Gridline and Elevation is the penetration?" pointing to the "Location of Penetration" field; "How was the penetration laid out" pointing to the "Layout Used" field; "What is the required penetration size?" pointing to the "Size of Penetration" field; "Company Requesting Penetration" pointing to the "Company" field; "Who to call in event of questions" pointing to the "Contact Person" field; "Phone Number of said person" pointing to the "Contact Phone Number" field; "Email of said person" pointing to the "Contact Email" field; "Confirmation of layout" pointing to the "Layout has been Confirmed" checkbox; "Date of Request" pointing to the "Date of Request" field; and "Photo of completed layout in the field" pointing to the "Photo of Layout" upload field. The form includes a "Submit" button at the bottom.

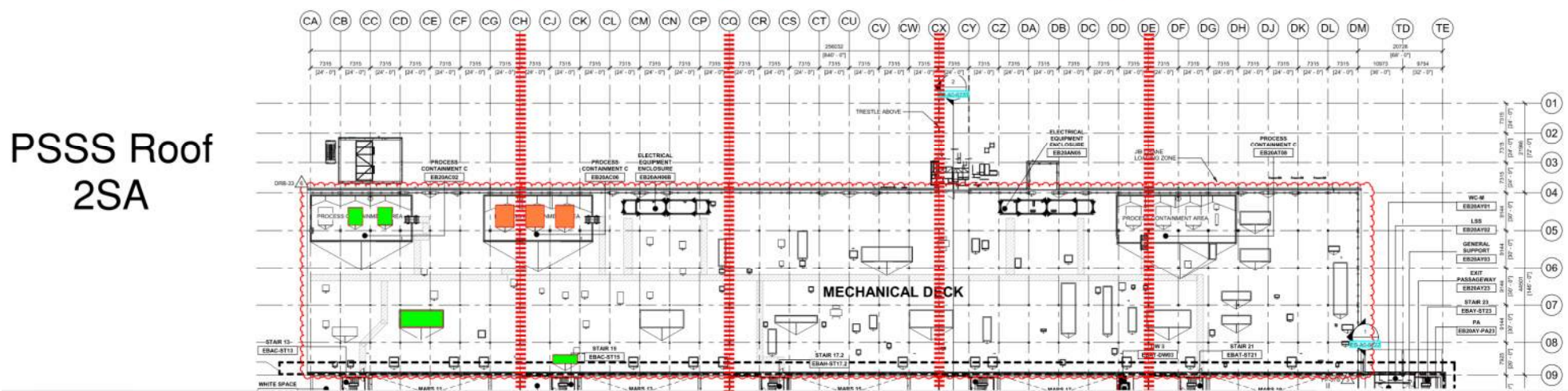
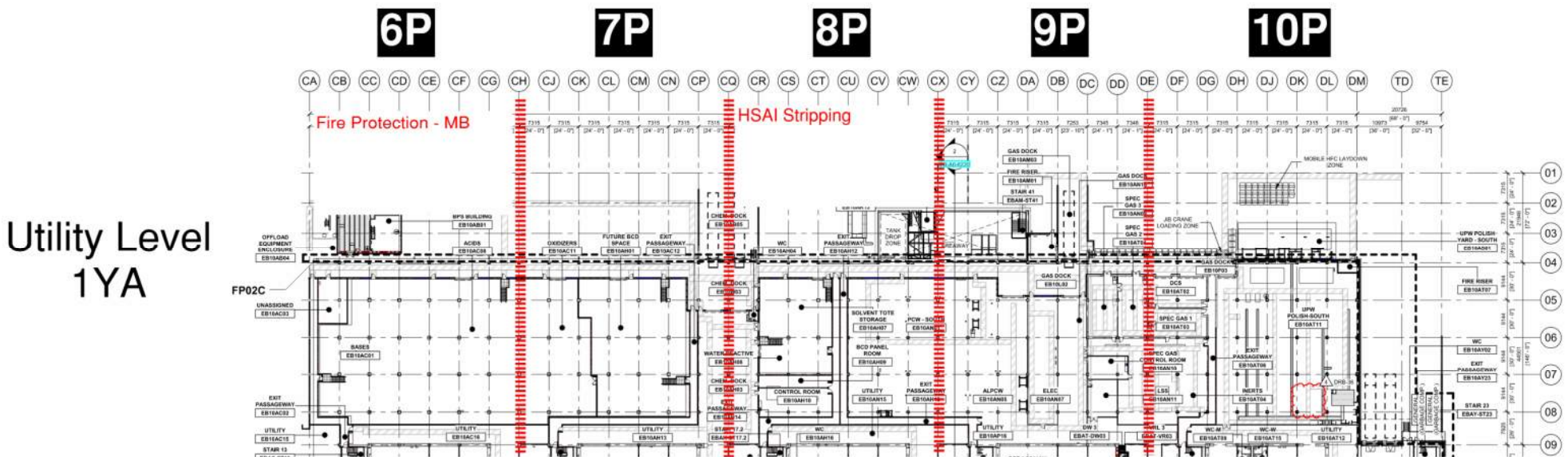
PSSS.1

Utility Level
1YA

PSSS Roof
2SA

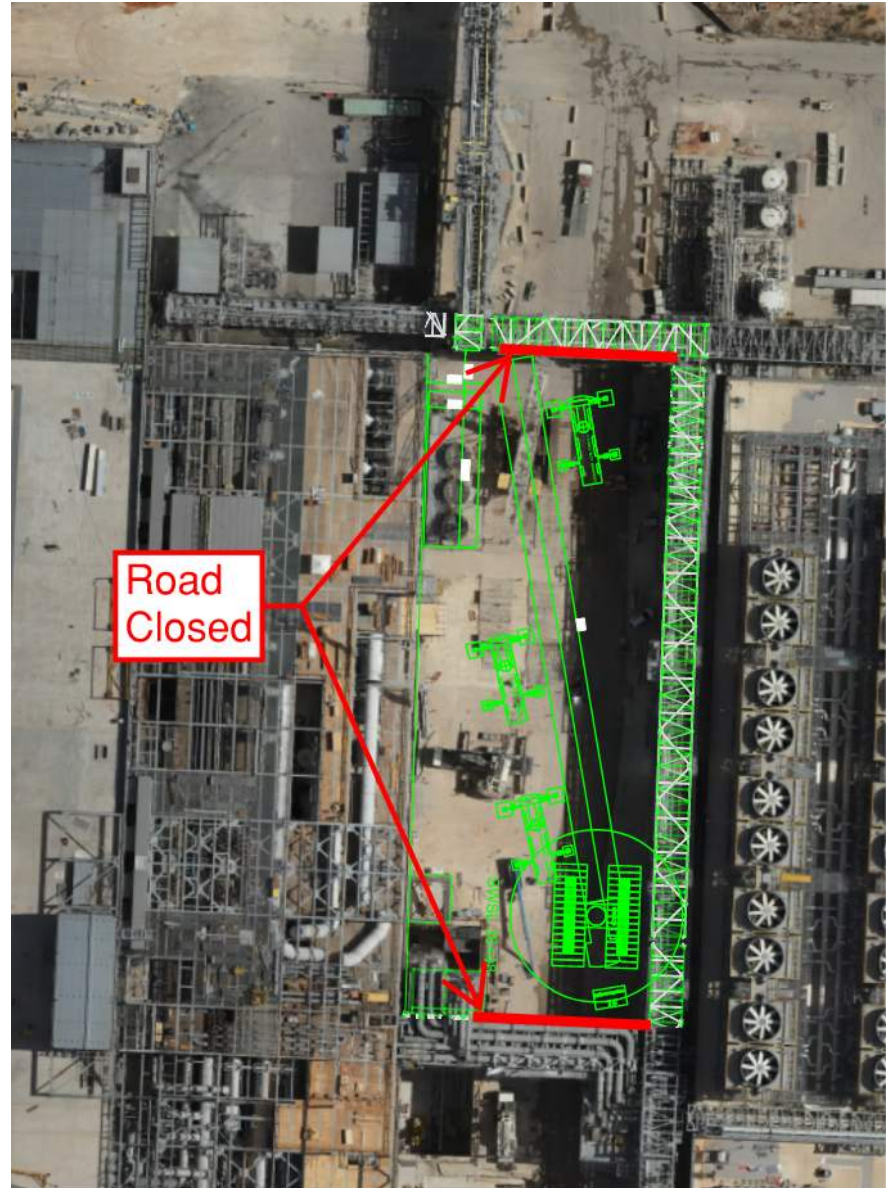


PSSS.2

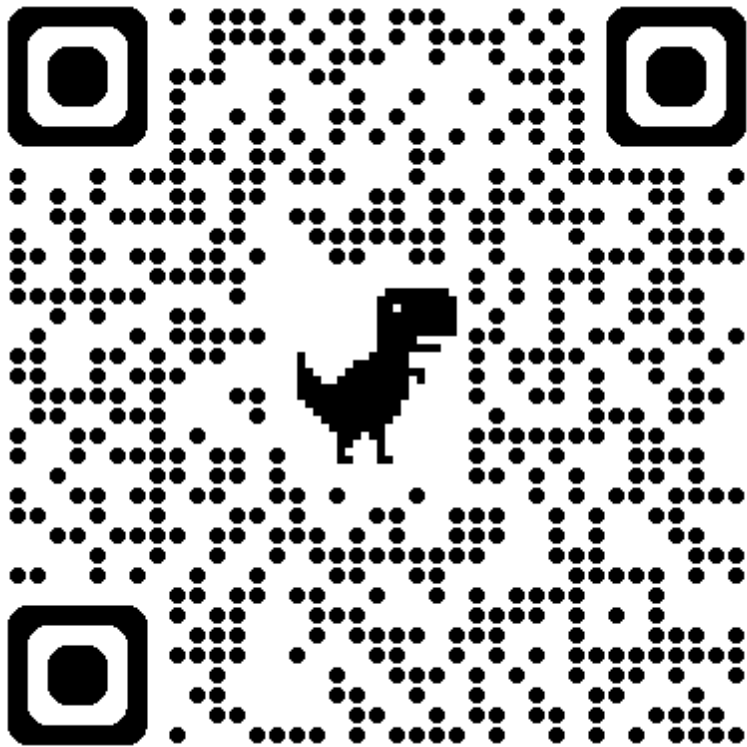


PSSS DMAG DISMANTLE

- July 21st-25th
 - UPW MIMO CLOSED
 - GAS MIMO CLOSED
 - GUT ROAD BLOCKED FROM TRESTLE BRIDGE TO TRESTLE BRIDGE



EJG/WJG Grating/Planking Penetrations



JG Grating/Planking Penetrations

Type of Penetration *
What side of the building is the penetration located?

Location of Penetration *
Provide gridlines of where the penetration is needed

Zone of Penetration *
What zone is the penetration

Lift of Penetration *
What lift of Steel is the penetration

Gridlines of Penetration *
Input the gridlines of where the penetration is located

Size of Penetration *
Put size of penetration required in mm

Contact Company *

Contact Number *
Contact number in the case of questions:

Contact Email *
Email of person to get notifications on penetration

Layout Confirmation *
Confirmation that layout has been confirmed by requesting contractor. If layout is incorrect, the requesting contractor will be responsible for all fixes, build backs, replacement, etc. cost associated with the incorrect layout.

Photo of Layout in the field *
Upload a photo of the layout once complete
browse files"/>

Send me a copy of my responses

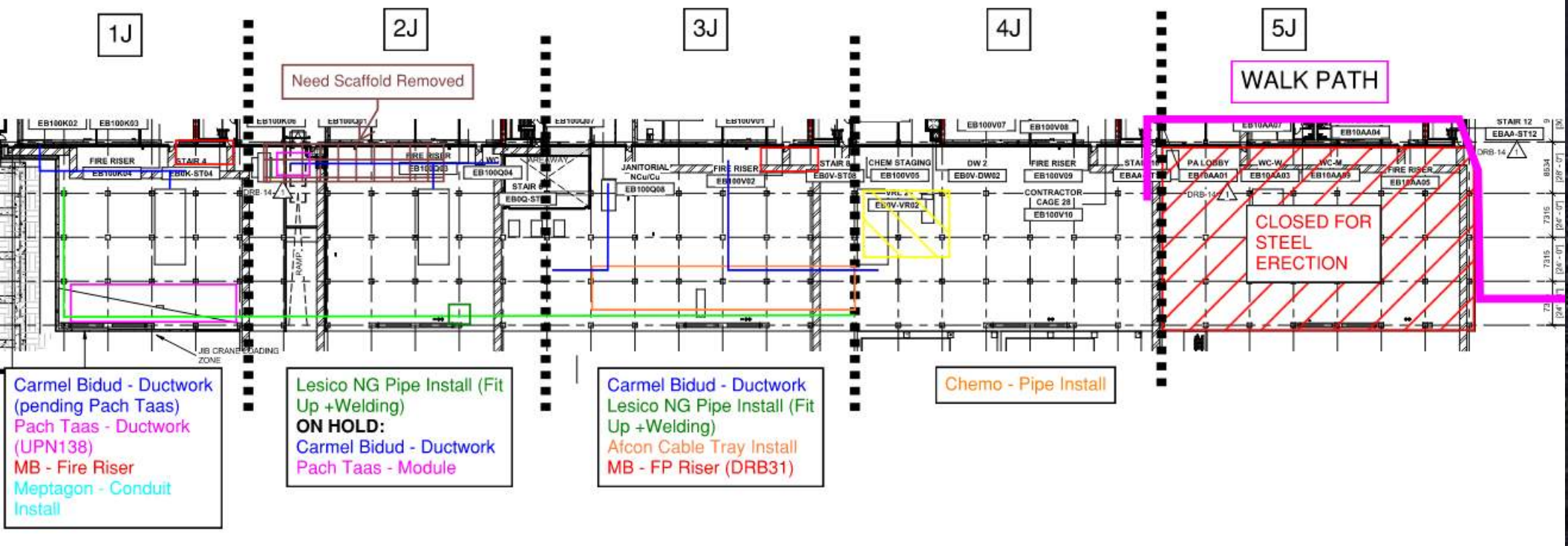
WJG 01J, 02J LIFT 2 & 3



WJG 03J, 04J, 05J LIFT 2 & 3



WJG UTILITY LEVEL BUILD OUT

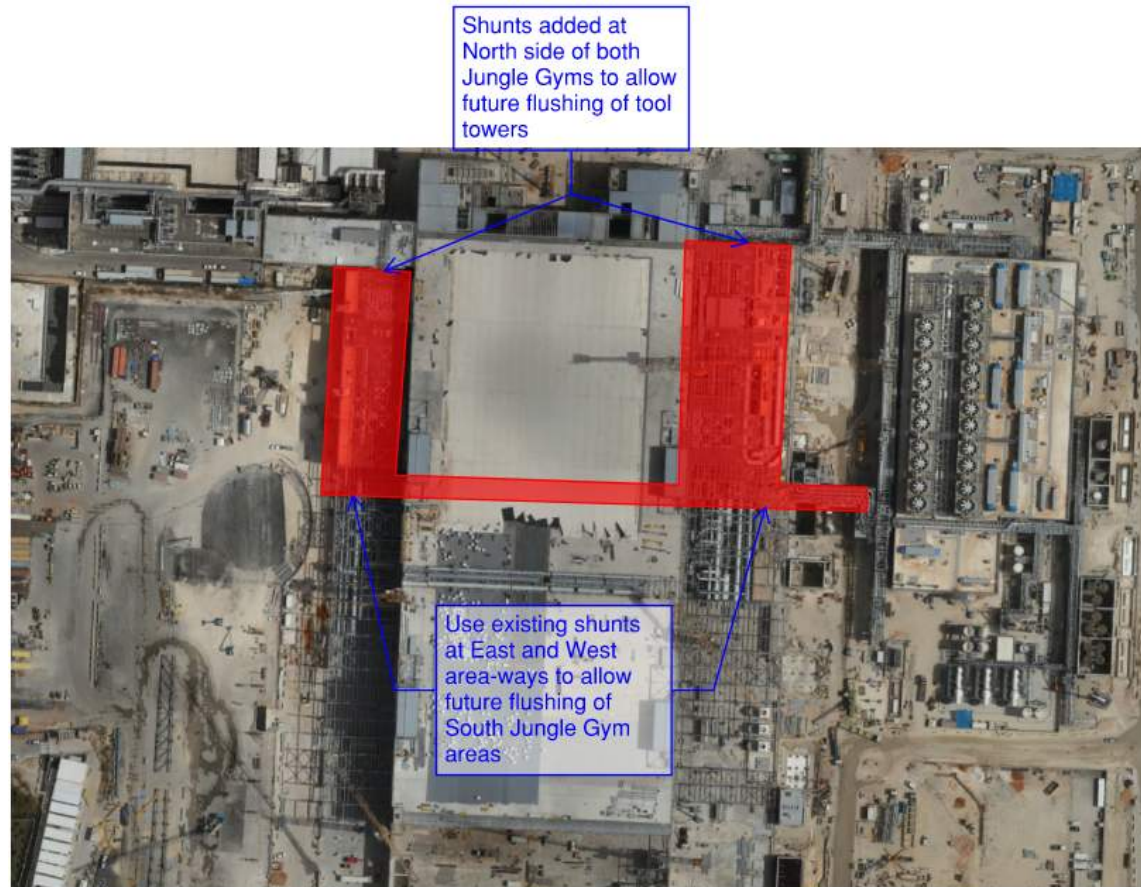


UPN 116

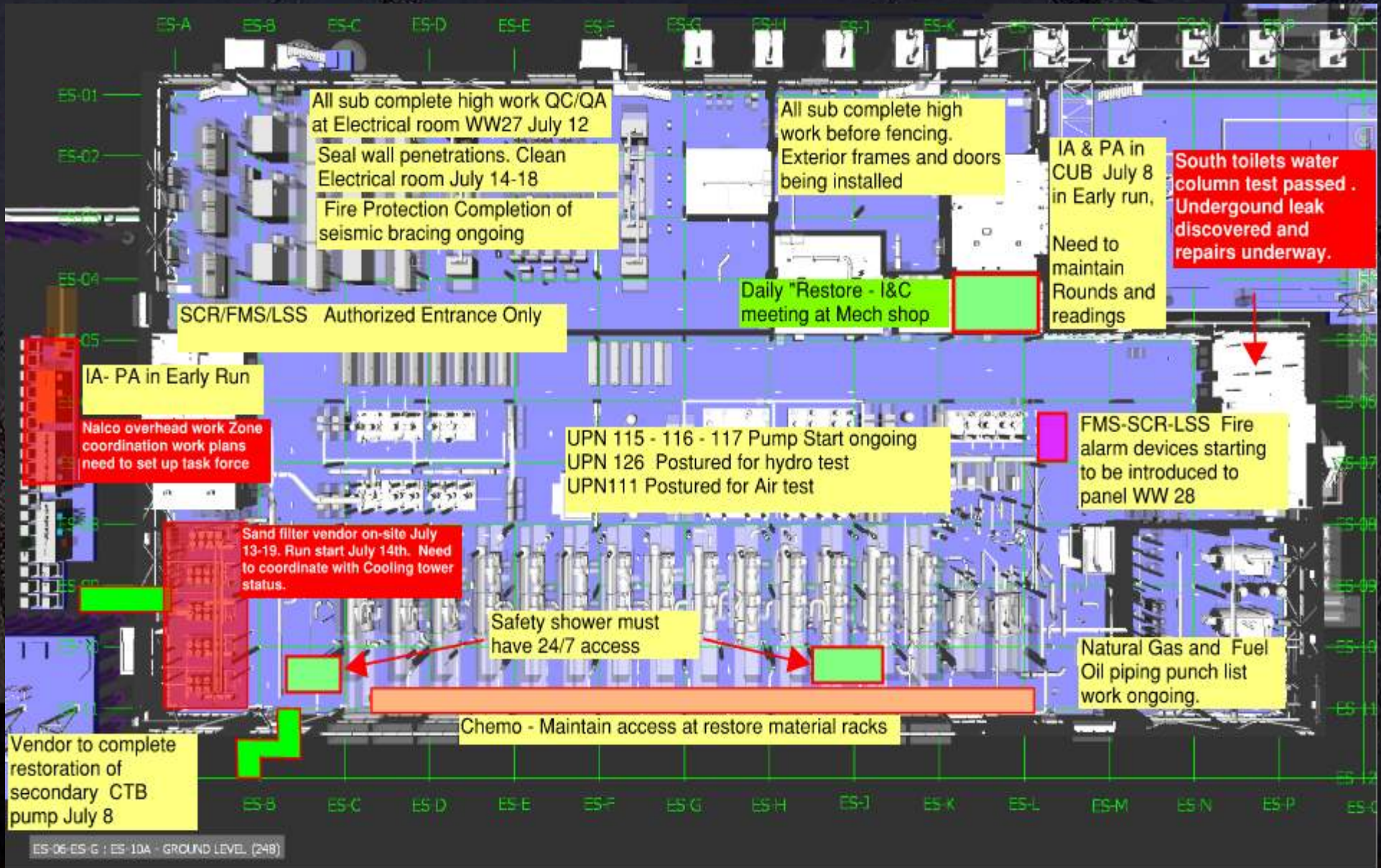


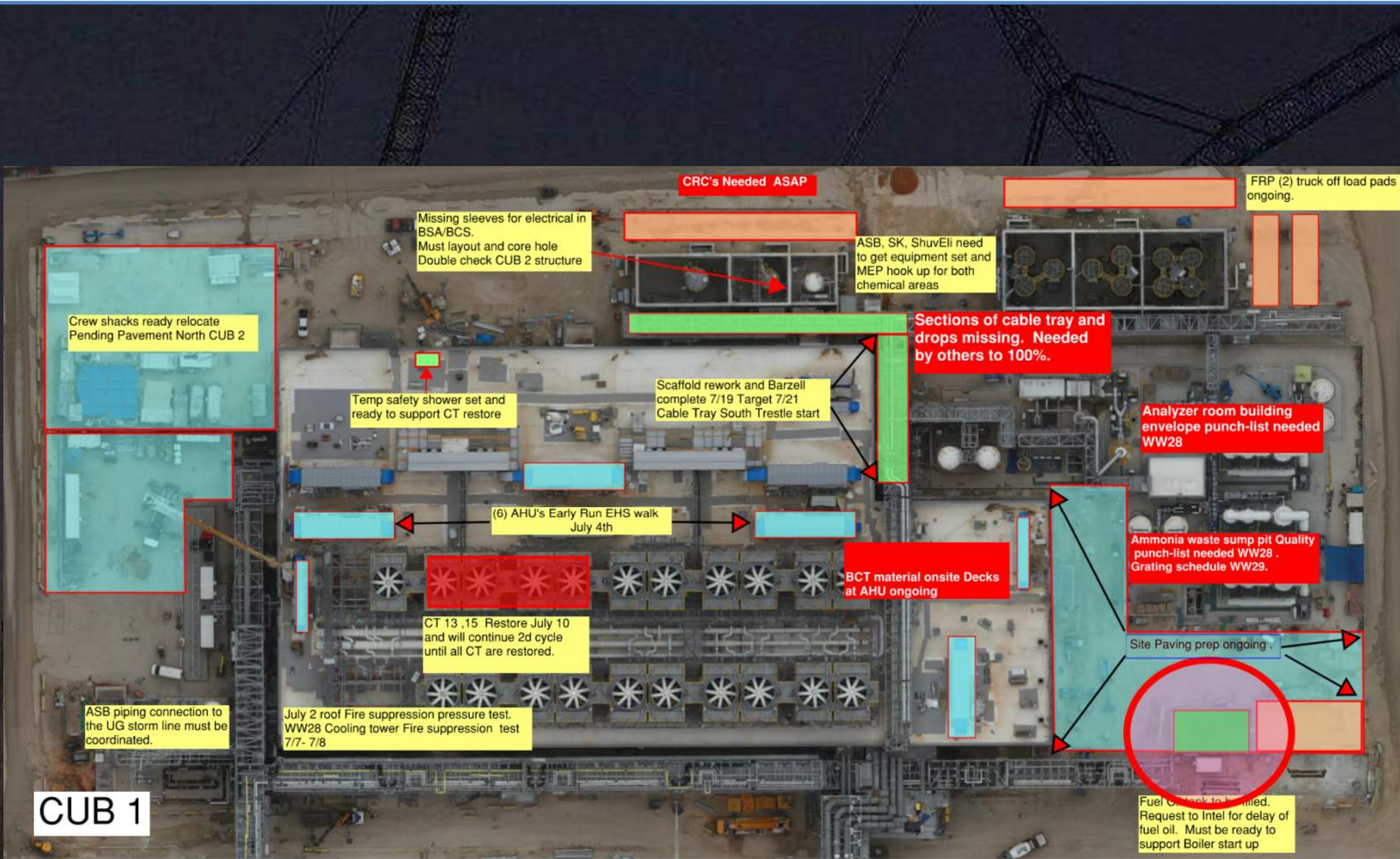
Flushing will enable
HUPW Heat
Exchangers (located on
Utility level sector 2W)

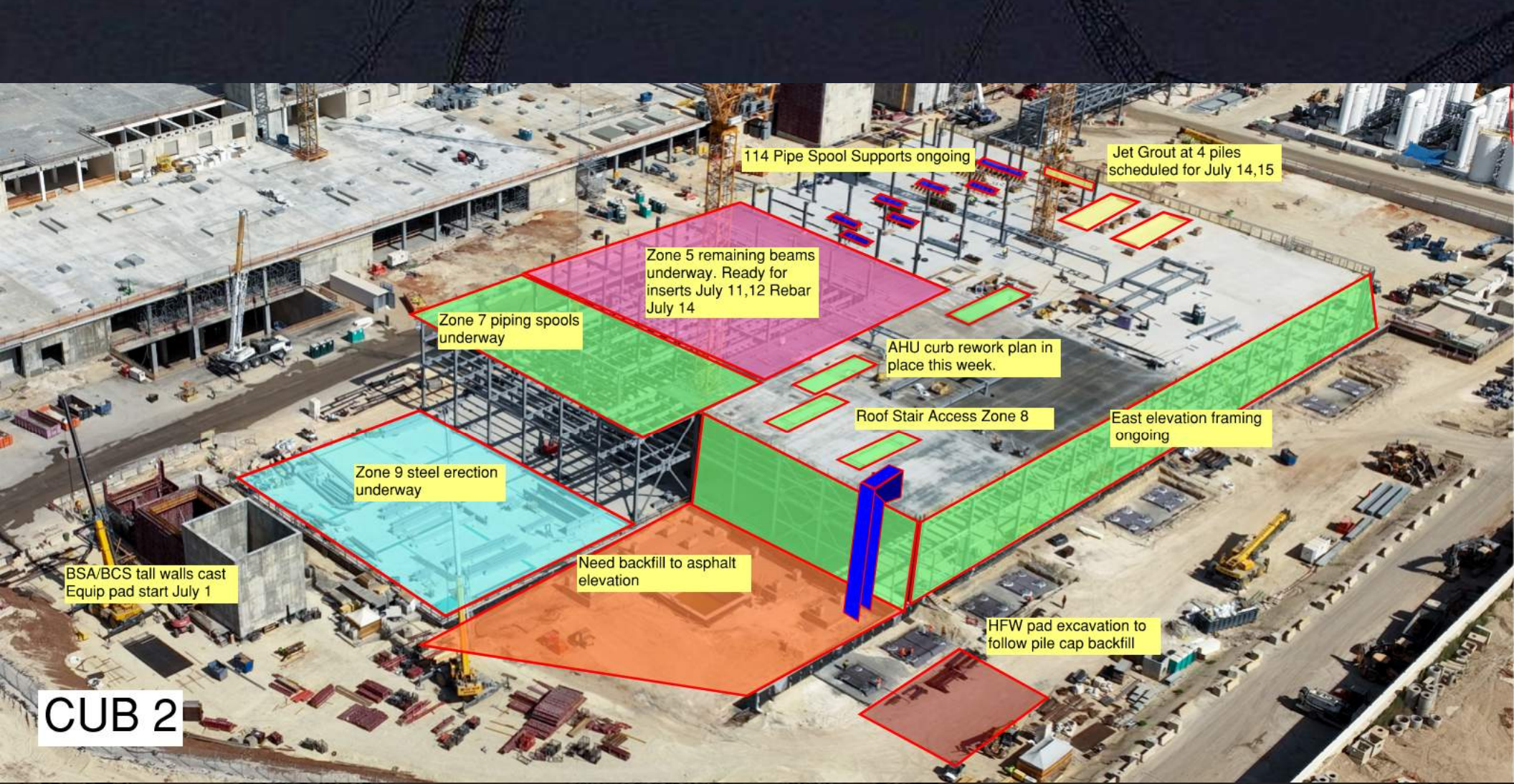
UPN 117



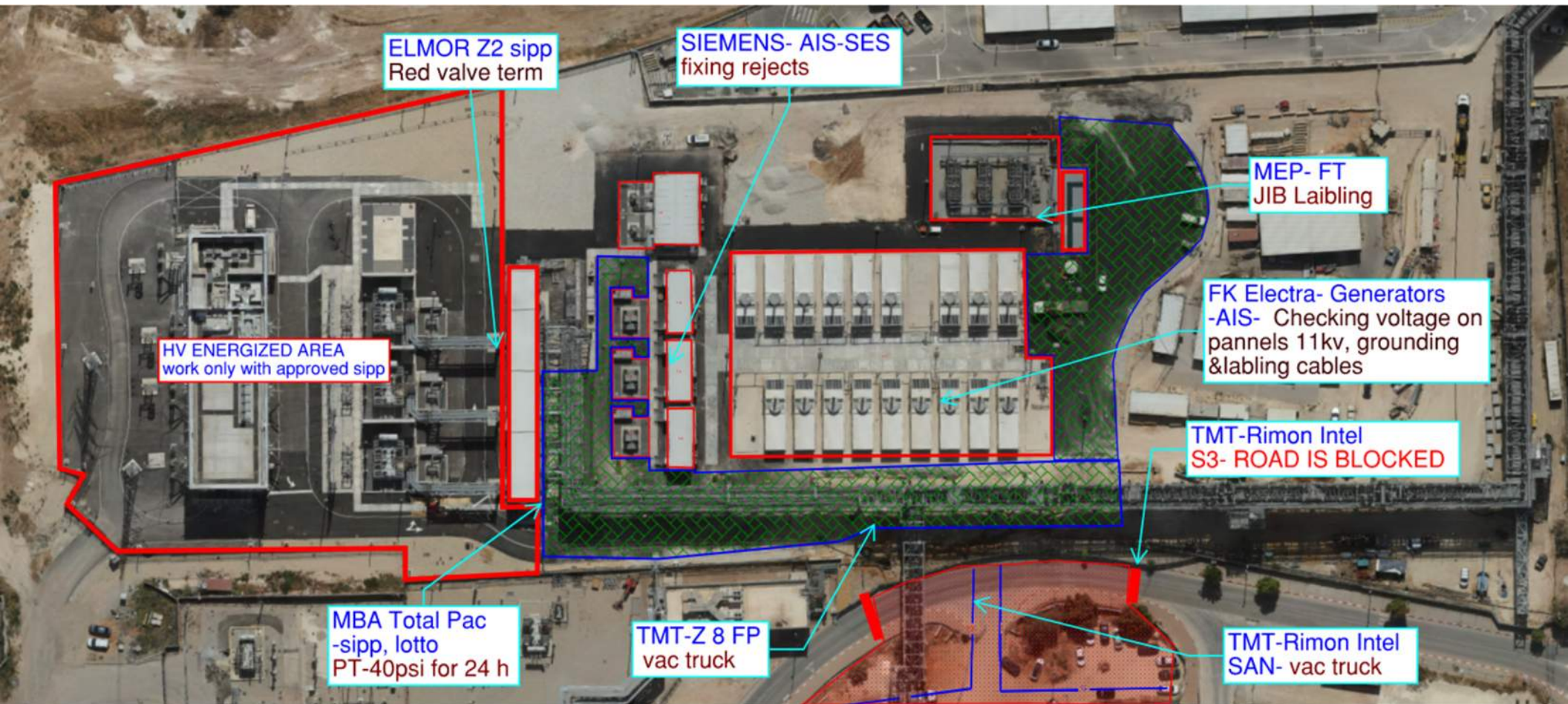
Flushing will enable
30% Blowdown MAH's
and Spec Gas room
Heating coils







CUB 2



ELMOR Z2 sipp
Red valve term

SIEMENS- AIS-SES
fixing rejects

MEP- FT
JIB Laibling

FK Electra- Generators
-AIS- Checking voltage on
pannels 11kv, grounding
&labing cables


TMT-Rimon Intel
S3- ROAD IS BLOCKED

HV ENERGIZED AREA
work only with approved sipp

MBA Total Pac
-sipp, lotto
PT-40psi for 24 h

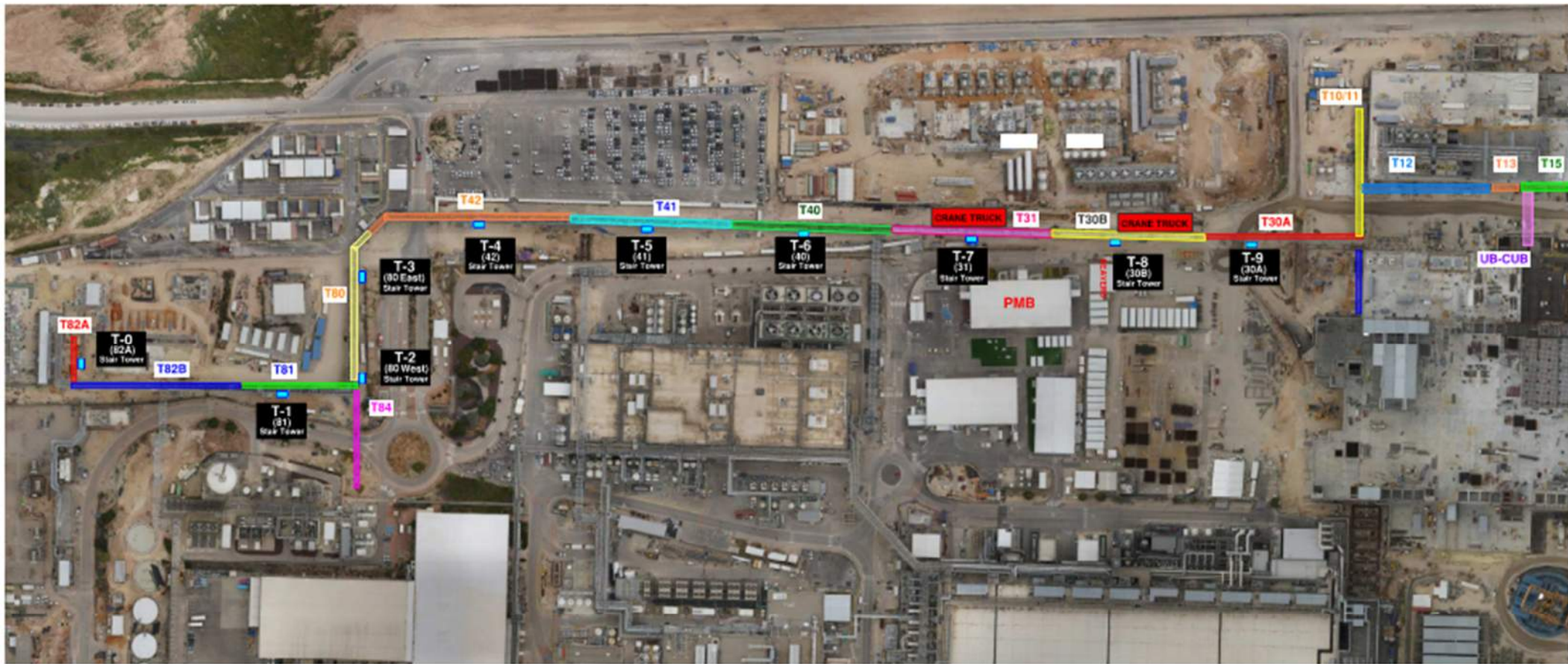
TMT-Z 8 FP
vac truck

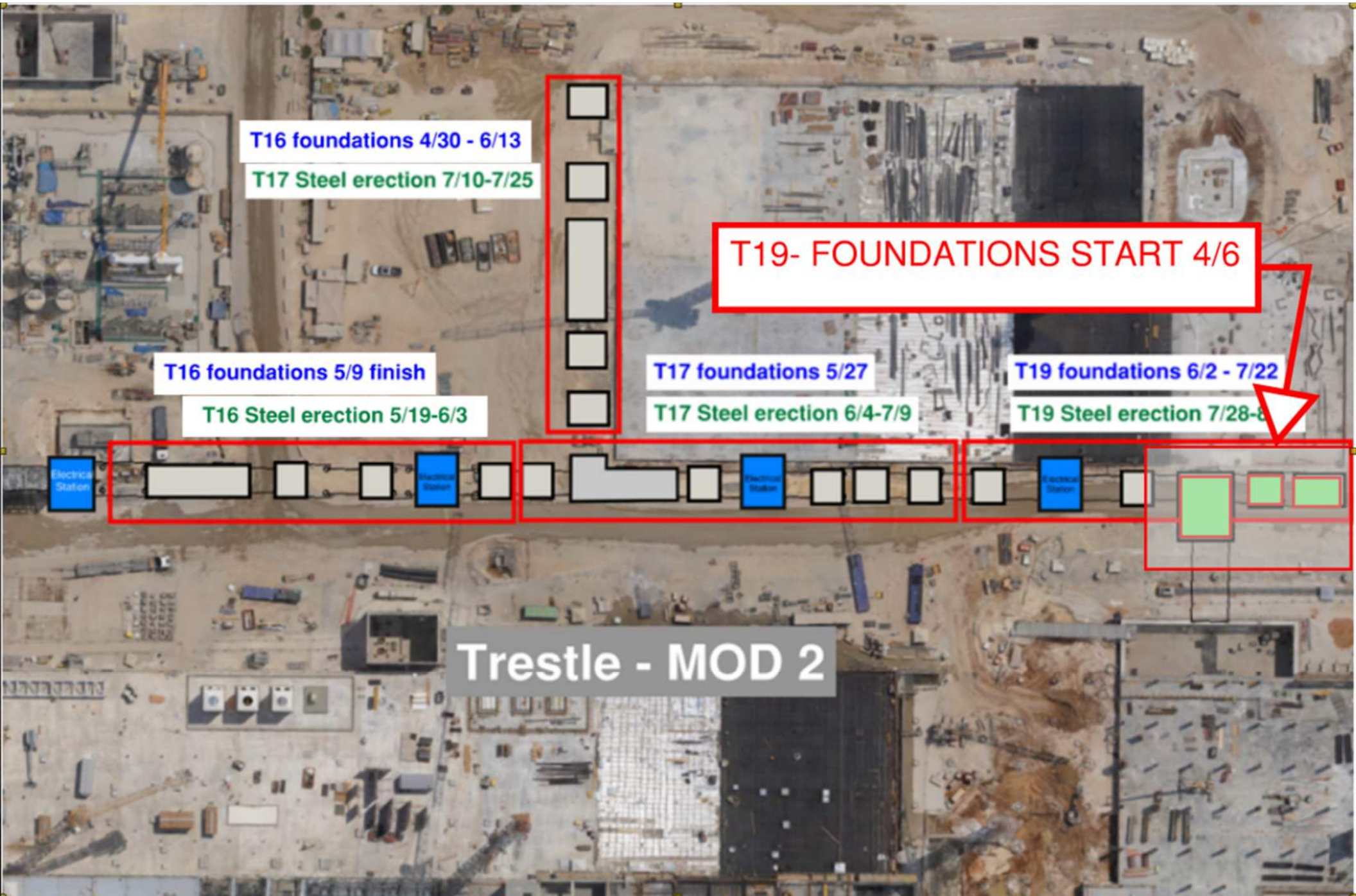
TMT-Rimon Intel
SAN- vac truck



HRA AREA

Planning machinery-
truck, boom lift, fork
... etc work- requires
coordination in
advance Hcc Sup &
meet the requirement
before starting work
to insure not damage
facilities





T16 foundations 4/30 - 6/13
T17 Steel erection 7/10-7/25

T19- FOUNDATIONS START 4/6

T16 foundations 5/9 finish

T17 foundations 5/27

T19 foundations 6/2 - 7/22

T16 Steel erection 5/19-6/3

T17 Steel erection 6/4-7/9

T19 Steel erection 7/28-8/1

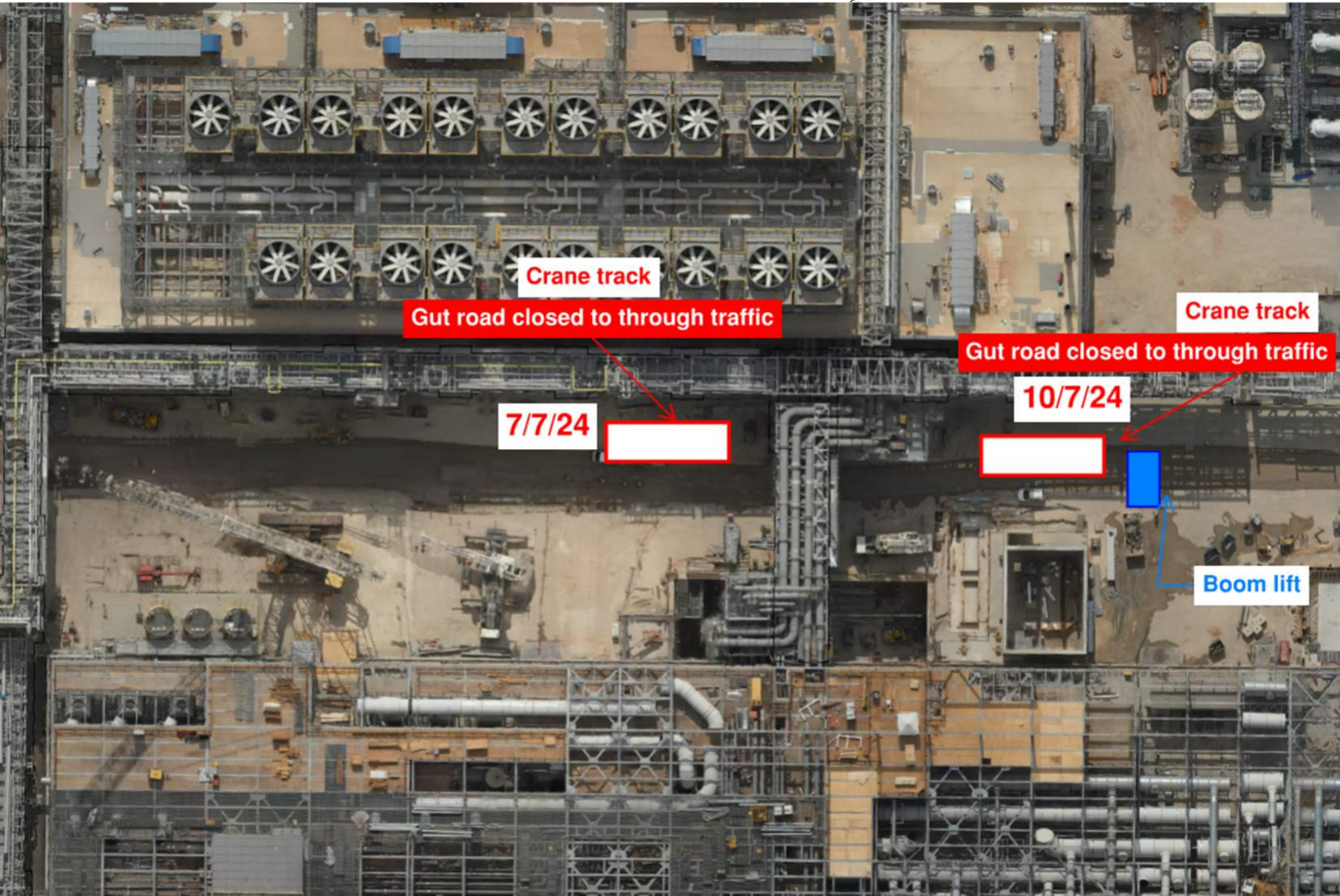
Electrical Station

Electrical Station

Electrical Station

Electrical Station

Trestle - MOD 2



Crane track

Gut road closed to through traffic

Crane track

Gut road closed to through traffic

7/7/24



10/7/24



Boom lift



HOFFMAN CONSTRUCTION COMPANY

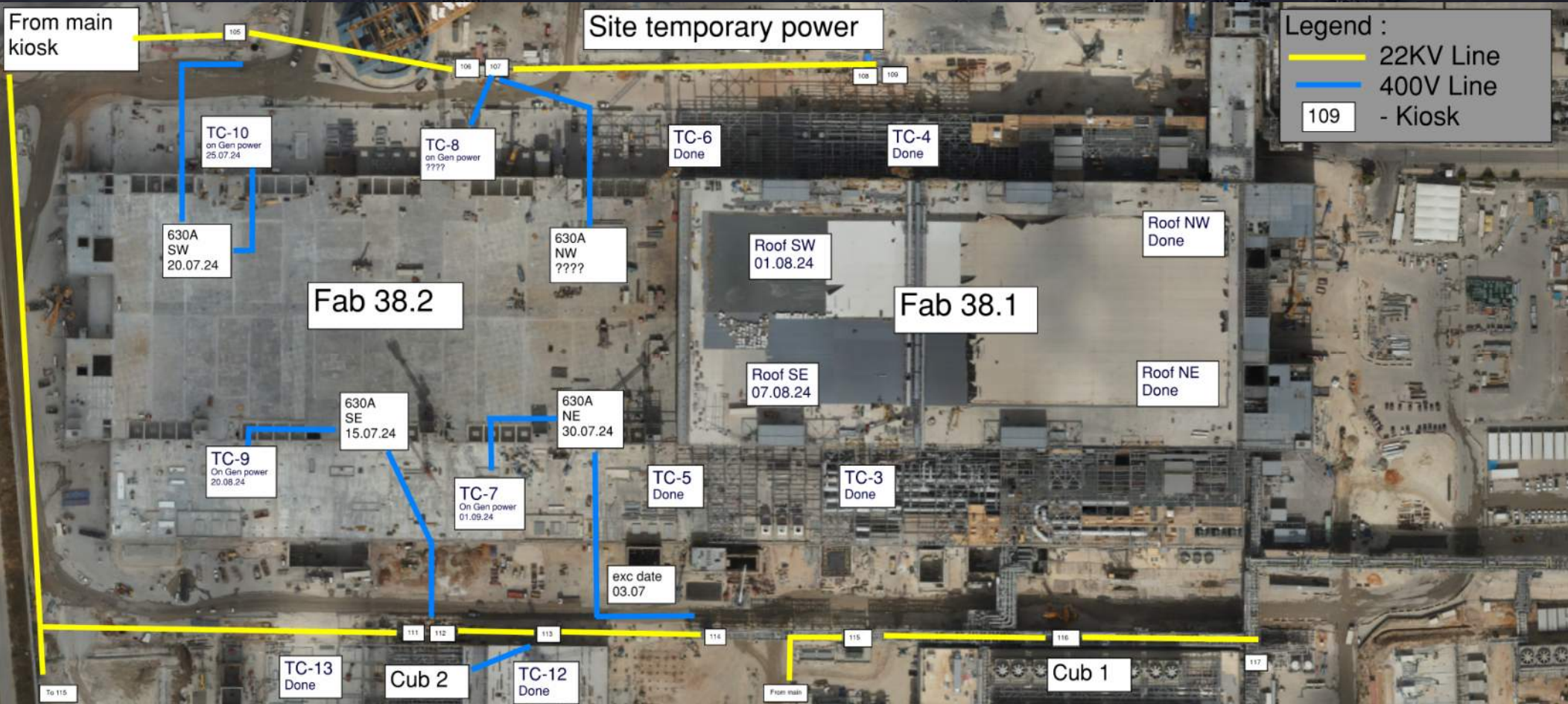


HOFFMAN
Sparrow  

BSGS



Daily Coordination Meeting



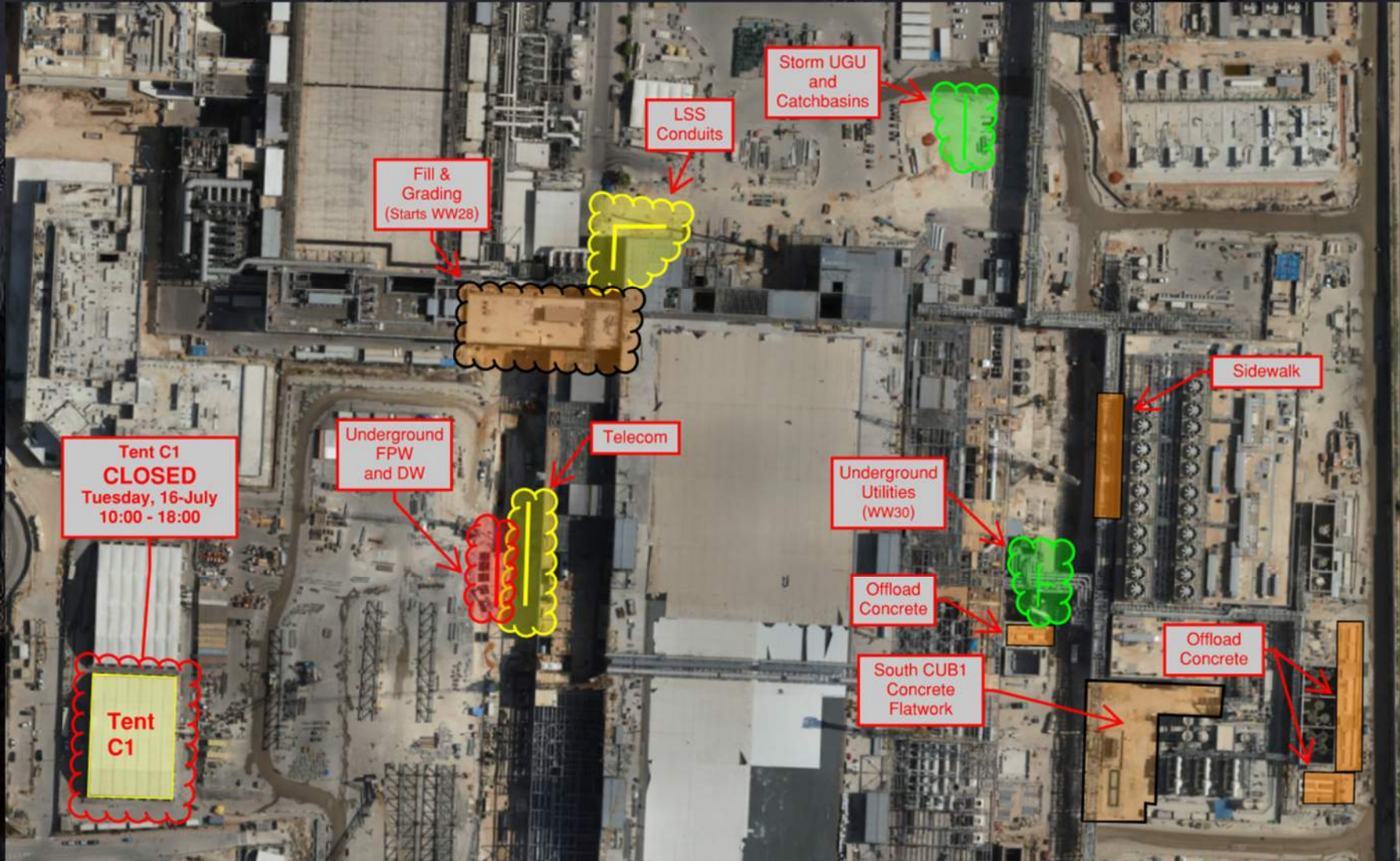
Daily Coordination Meeting

Site Logistics
North Gate B



Daily Coordination Meeting

Site Logistics
North



Daily Coordination Meeting

Site Logistics

South



Daily Coordination Meeting

WATER BOTTLE FILLING & PERSONNEL COOLING STATIONS



CRAFT LUNCH

17 Million Man-Hours

TUESDAY – JULY 16th

| 11:30 | 12:15 | 13:00 | 13:45 |
|-------------------------------------|------------------------|-------------------------------|-------------------------|
| A.S Barzel | HOFFMAN | Carmel Bidud LTD (FAB + PSSS) | HYG STEEL |
| Afcon Contracting Services | STAGE DESIGN | CHEMO AHARON LTD (FAB) | KATZ ARIE |
| Afcon Control and Automation Ltd | TALAD | COMBE LTD | LESICO |
| Avi Cranes | TEAM3 | D&P Clean Room Ltd | MALCHIMIM BADAROM |
| BCT PIPELINE PROCESSES LTD | TM TEAM - JOB SERVICES | Derech Afar LTD | MEGASON |
| BRAND INSUSTRIAL LTD | TM TEAM | DVIR.IE LTD | MEPTAGON |
| ByNet Sestem Application Ltd | TZUR ESH | ELECTROSAFE LTD | NEWCO |
| Hoffman Structures of Americaw, Inc | W&W | EL-MORE ELECTRIC | OLIZKI |
| | INTEL | ELRAM PROJECT LTD | ORAIYN |
| | JACOBS | ES Entry Systems LTD | PACH TASAS |
| | HB | GLOBUS WORLDWIDE LOGISTICS | RANPRO |
| | QA- AMTS, Q+,DPS | | RESHATOTO BEER SEVA |
| | | | ROLLING PLAINS |
| | | | SAMI NAJAMI ENGINEERING |
| | | | SELA |
| | | | SHUV ELI |
| | | | SIEMEINS |
| | | | SIG |
| | | | SK ENGINEERING |
| | | | SKYLINE CRANES |