

Daily Coordination Meeting



Daily Coordination Meeting

General Topics:

- Ramadan starts this weekend – make sure you have coverage plans



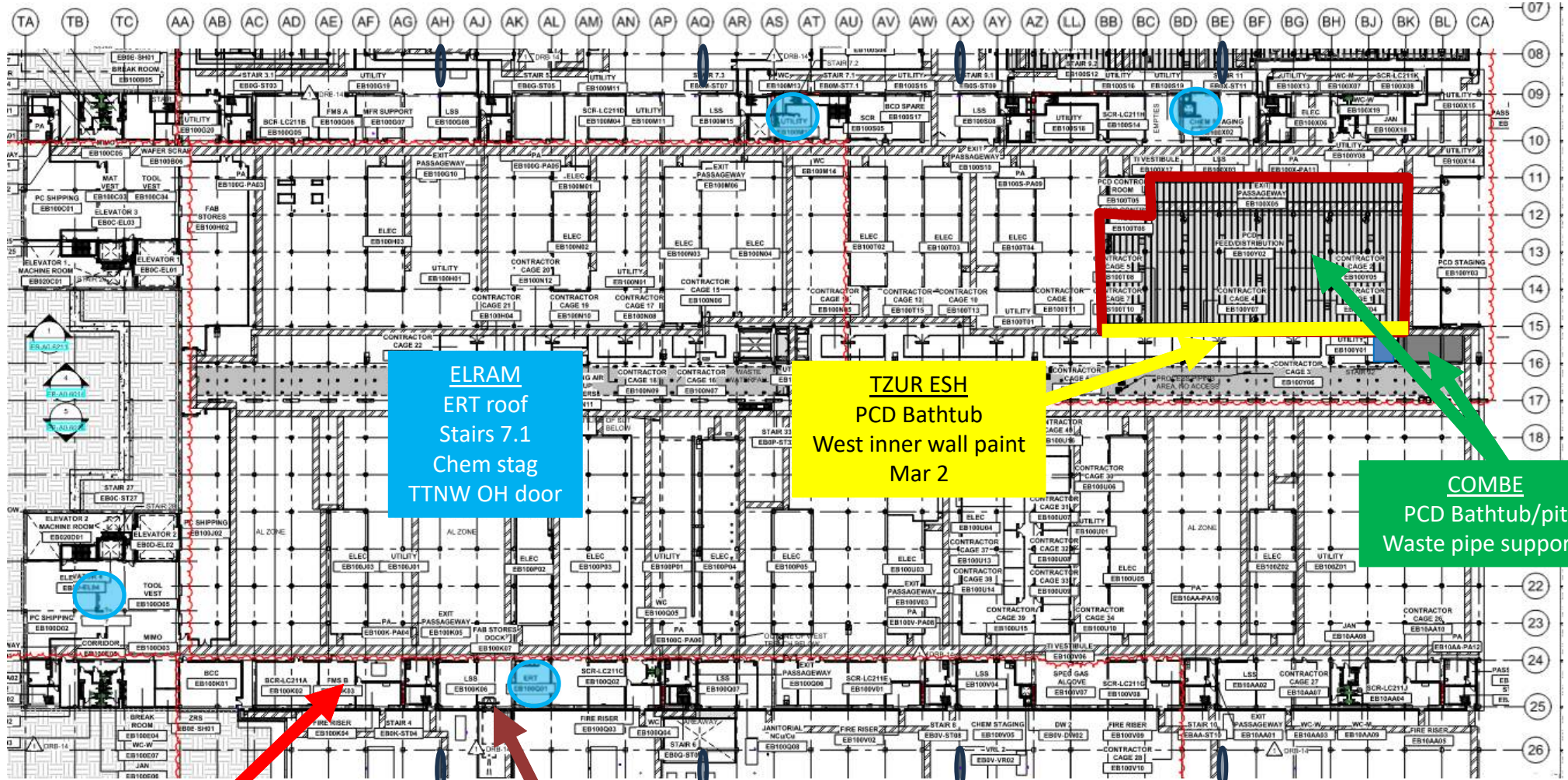
TC12 roof pour back
3:00am

Elevator2 pan stairs
4:00am

LAST ROOF POUR!!
12:00 am



UTILITY LEVEL MOD1



ELRAM
ERT roof
Stairs 7.1
Chem stag
TTNW OH door

TZUR ESH
PCD Bathtub
West inner wall paint
Mar 2

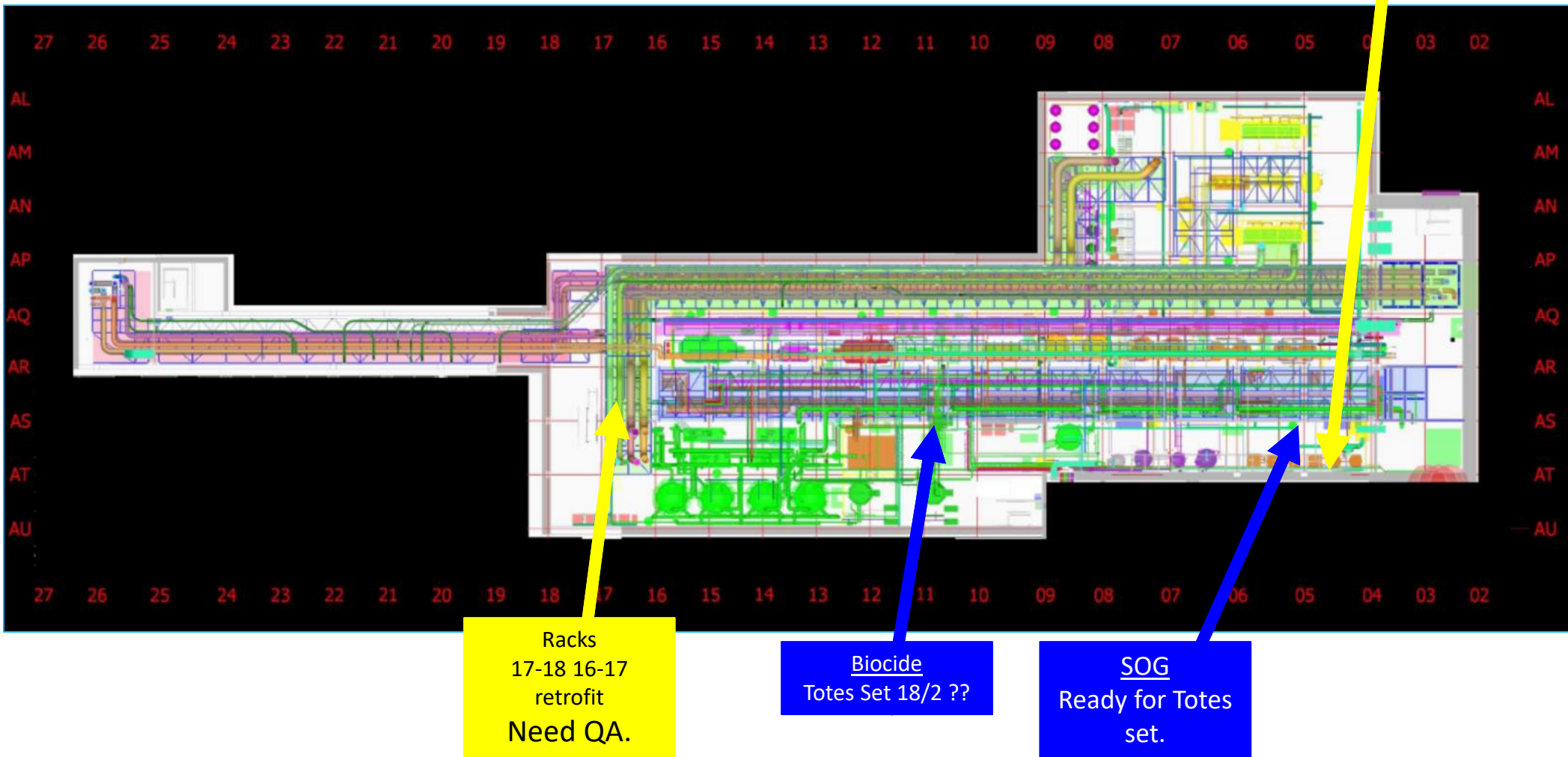
COMBE
PCD Bathtub/pit
Waste pipe supports

CARMEL DUCT
Remove duct for RHS install
Held

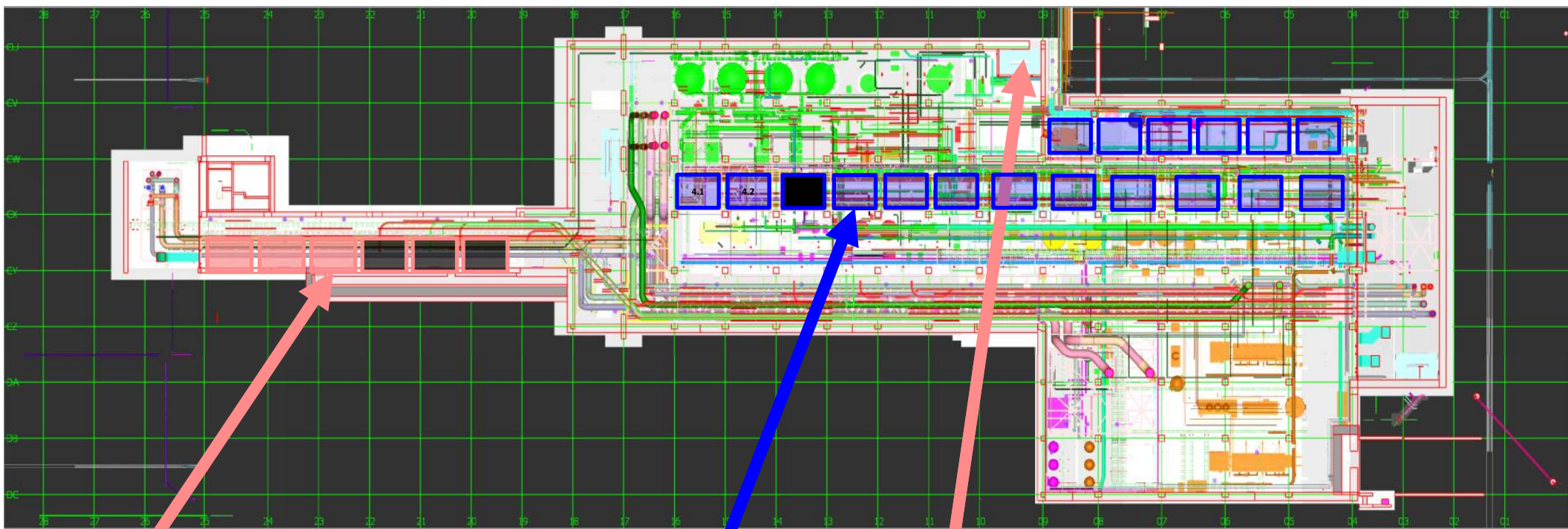
HYG
Install RHS for loading dock
start Mar 2



SUT 38.1 LEVEL



SUT 38.2 LEVEL

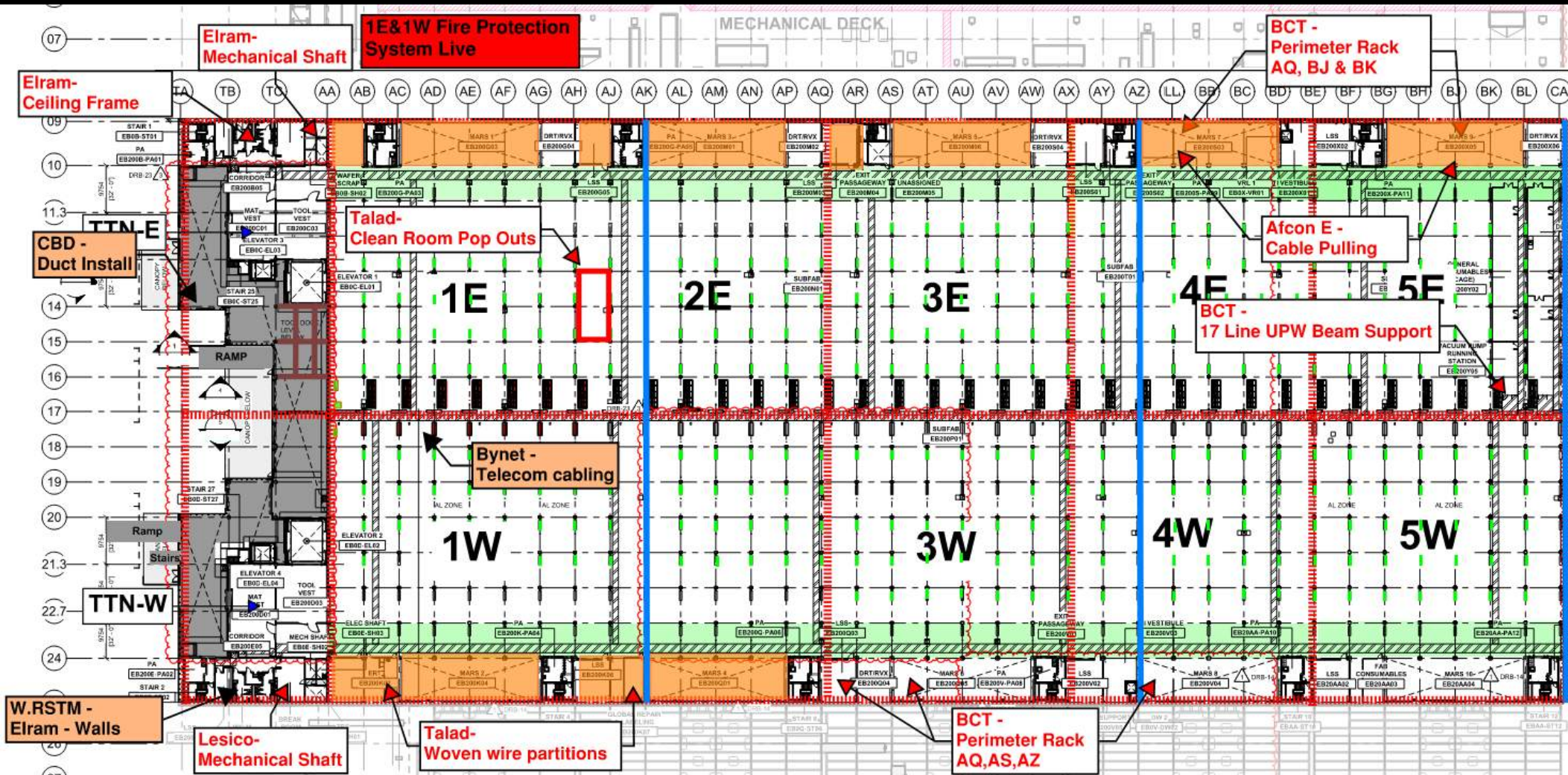


Rack 4 Upper
Module 4.4

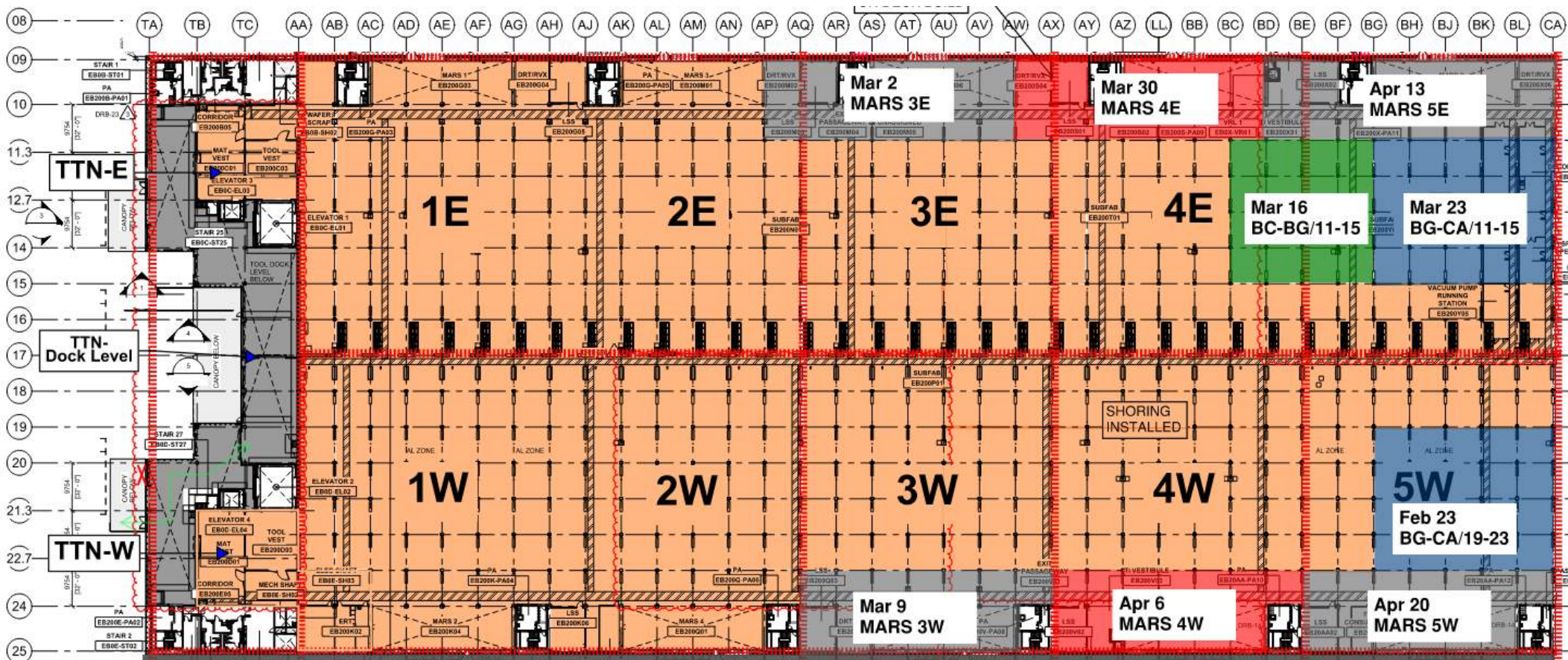
Stairs Open

16.2.2025	Module 1
17.02.2025	Module 2
24.02.2025	Module 3
25.02.2025	Module 4
03.03.2025	Module 5
04.03.2025	Module 6

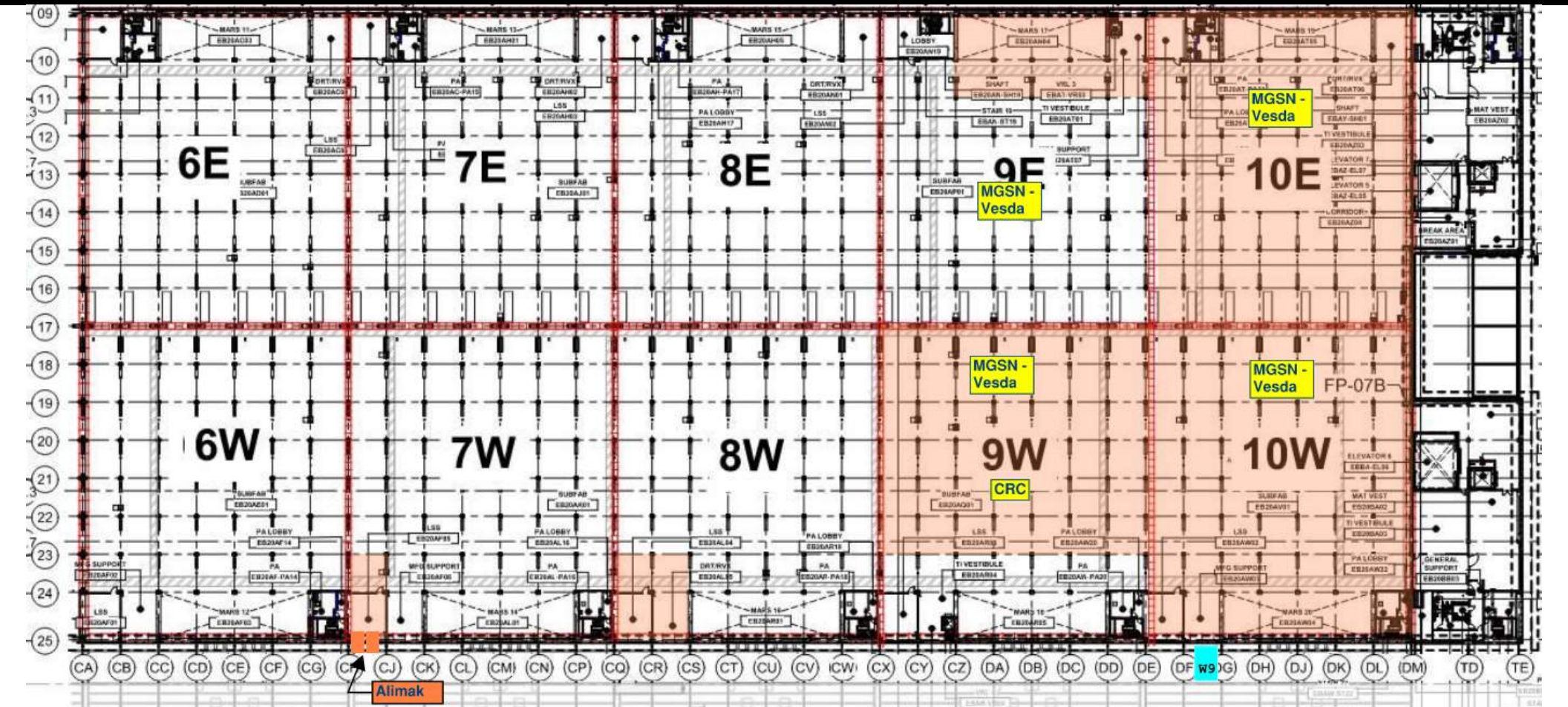
SUBFAB BUILDOUT MOD 1



SUBFAB CRC TOPCOAT



SUBFAB BUILDOUT MOD 2



HEPA Vacuum Certification

March 2025 certification will be performed as follow:

Monday - March 3rd at 07:30-08:15 AM
Wednesday - March 5th at 07:30-08:15 AM

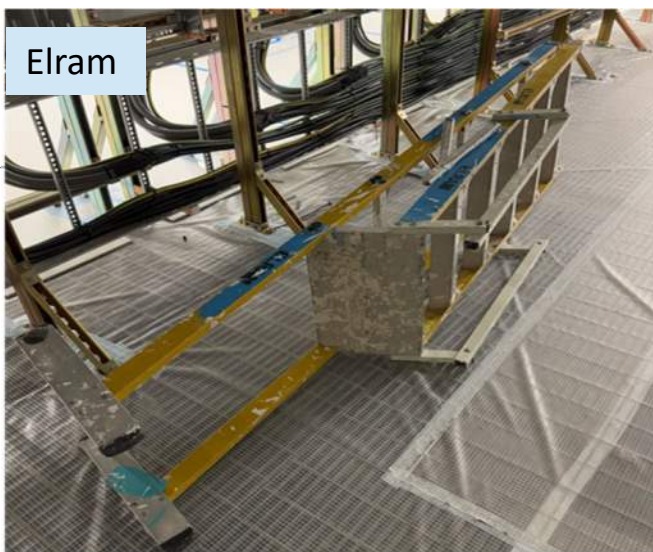
The tests will take place at the [clean-room South entrance line 17](#)



Afcon



Elram



Talent



Carmel bidud

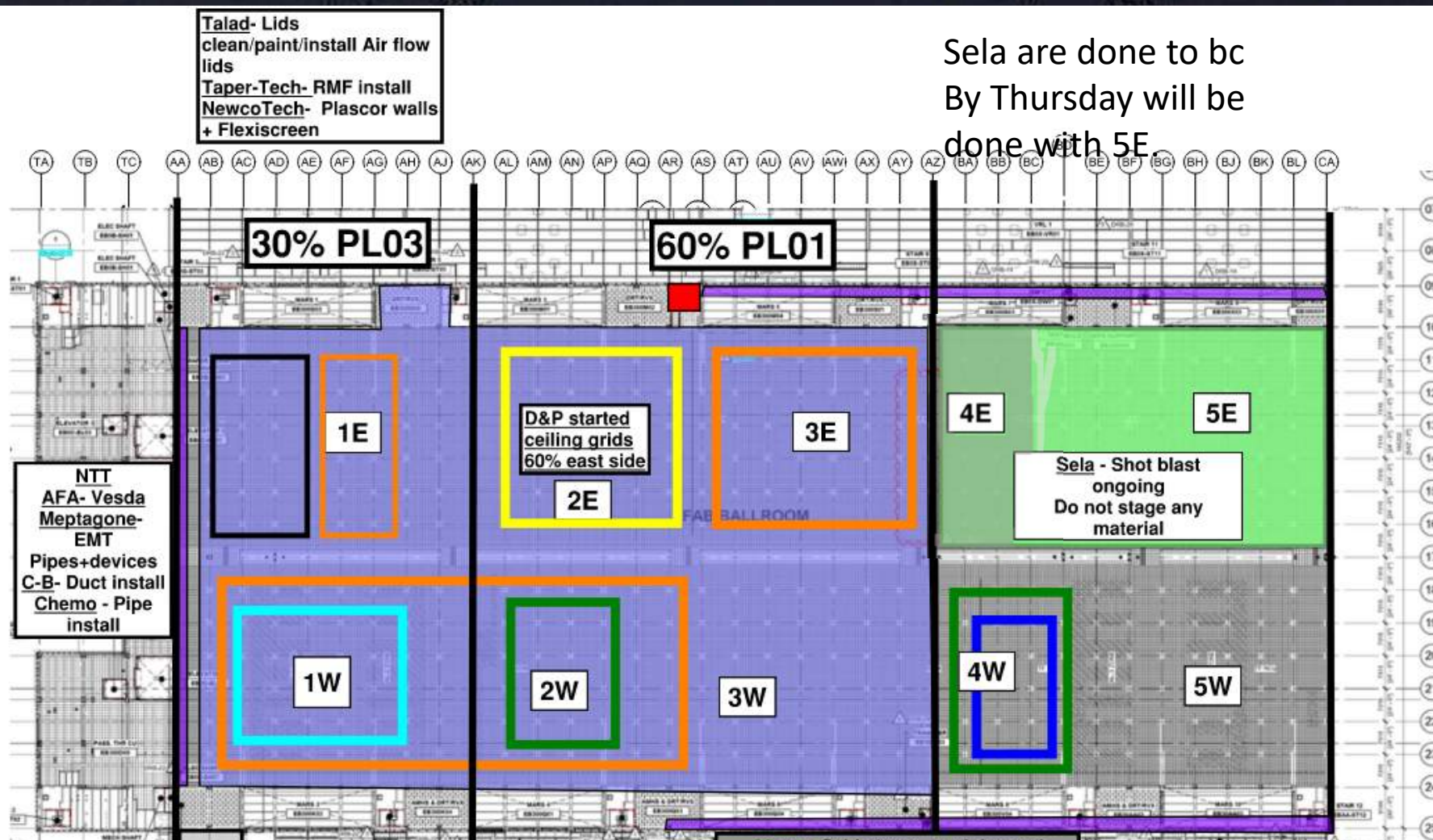


MLB



Afcon





Talad- Lids
clean/paint/install Air flow
lids
Taper-Tech- RMF install
NewcoTech- Plascor walls
+ Flexiscreen

Sela are done to bc
By Thursday will be
done with 5E.

NTT
AFA- Vesda
Meptagone-
EMT
Pipes+devices
C-B- Duct install
Chemo - Pipe
install

30% PL03

60% PL01

1E

2E

3E

4E

5E

Sela - Shot blast
ongoing
Do not stage any
material

1W

2W

3W

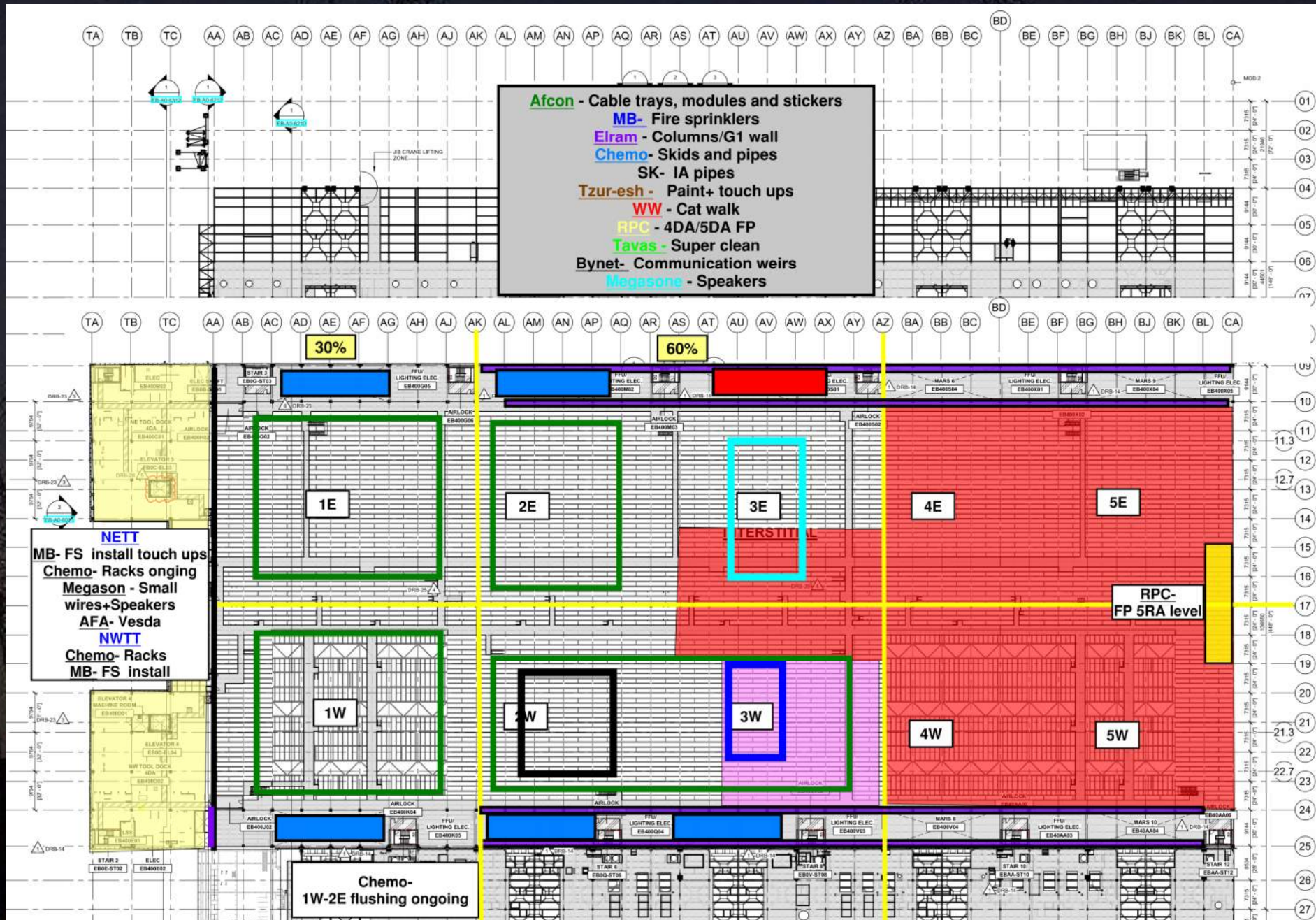
4W

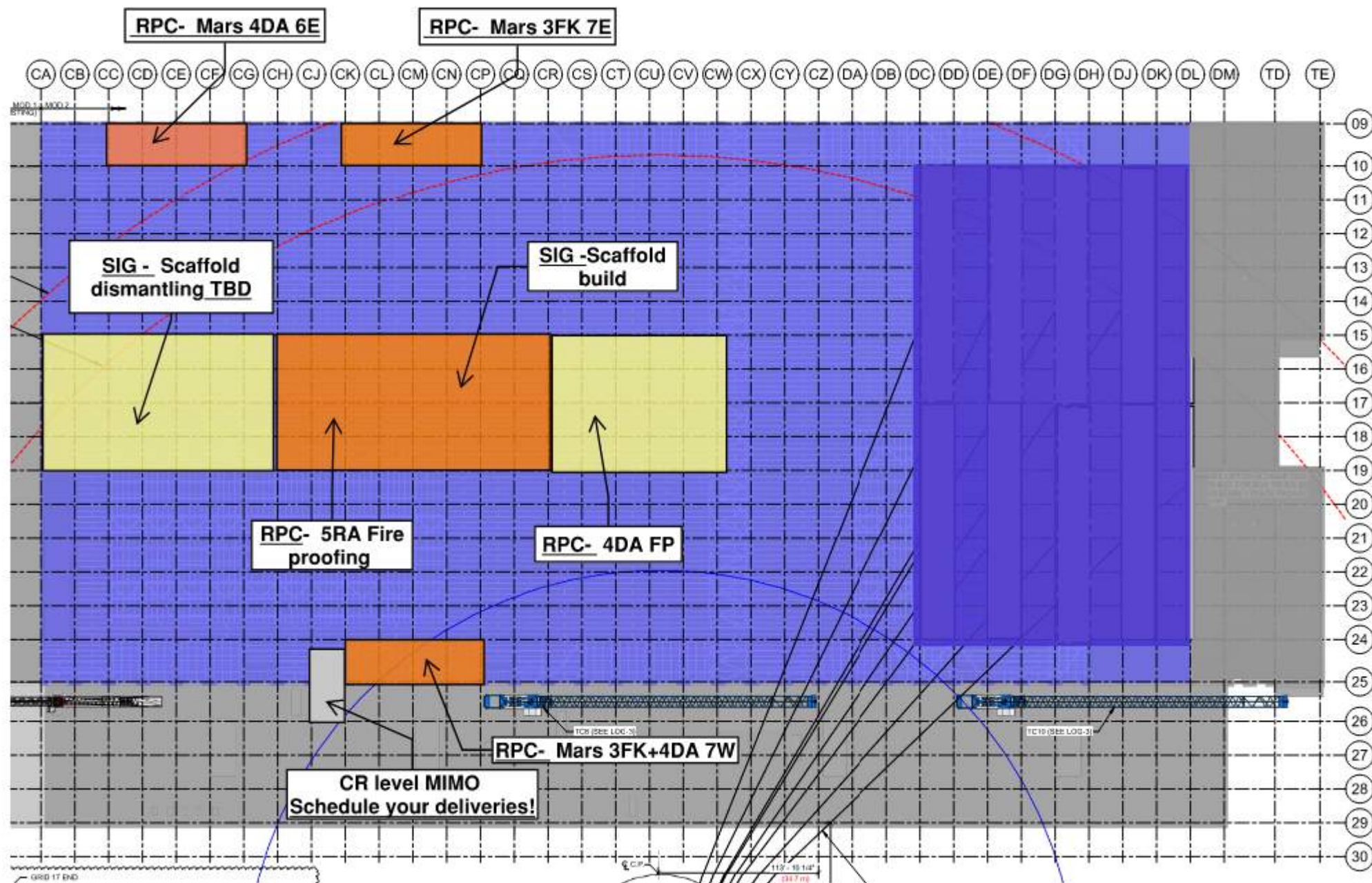
5W

Link
SIG- Scaffold tomorrow will be moved
all materials/ladders needs to be cleared
P-T - Duct dismantle needs to be done
MB- FS ongoing
D&P- Scaffold will move for blades drilling
Sela- Waiting for QC

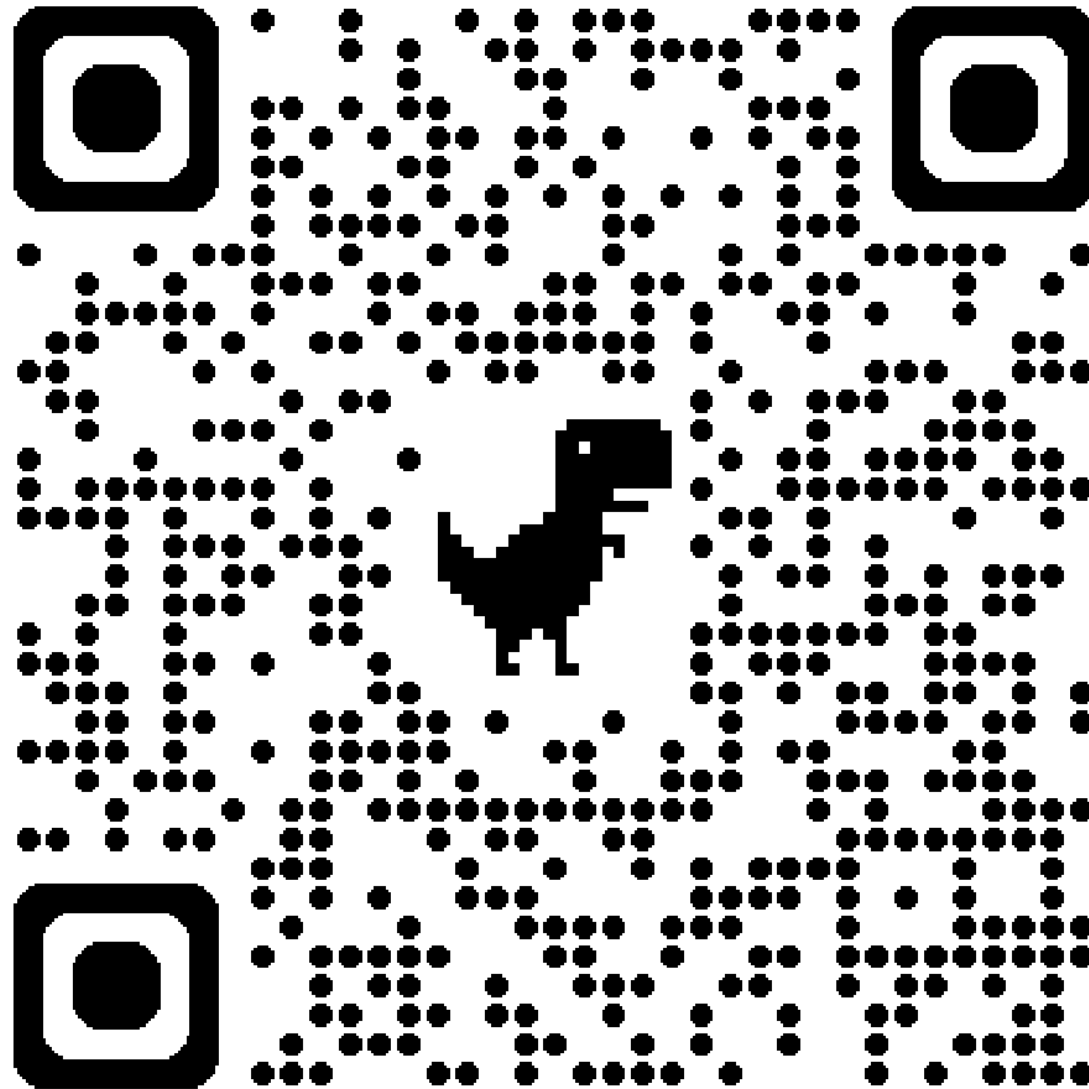
Afcon - Cable trays, modules and
stickers
MB- Pipes and drops
Elram - Columns/shaft walls/G1 wall
Meptagon - I&C+ Zero ref. pipes
D&P - Stick build+ separation
walls+FFU
Tzur-esh - 1W blade paint
HYG - Stairs 7.3 starts WW04
Talad - UPN install, ceiling grid, lids
removal
Taper - Super clean
Taper-Tech - RMF
Talent - Super clean

SIG-tomorrow 11:00 handrails
On mobile scaffold going
down.

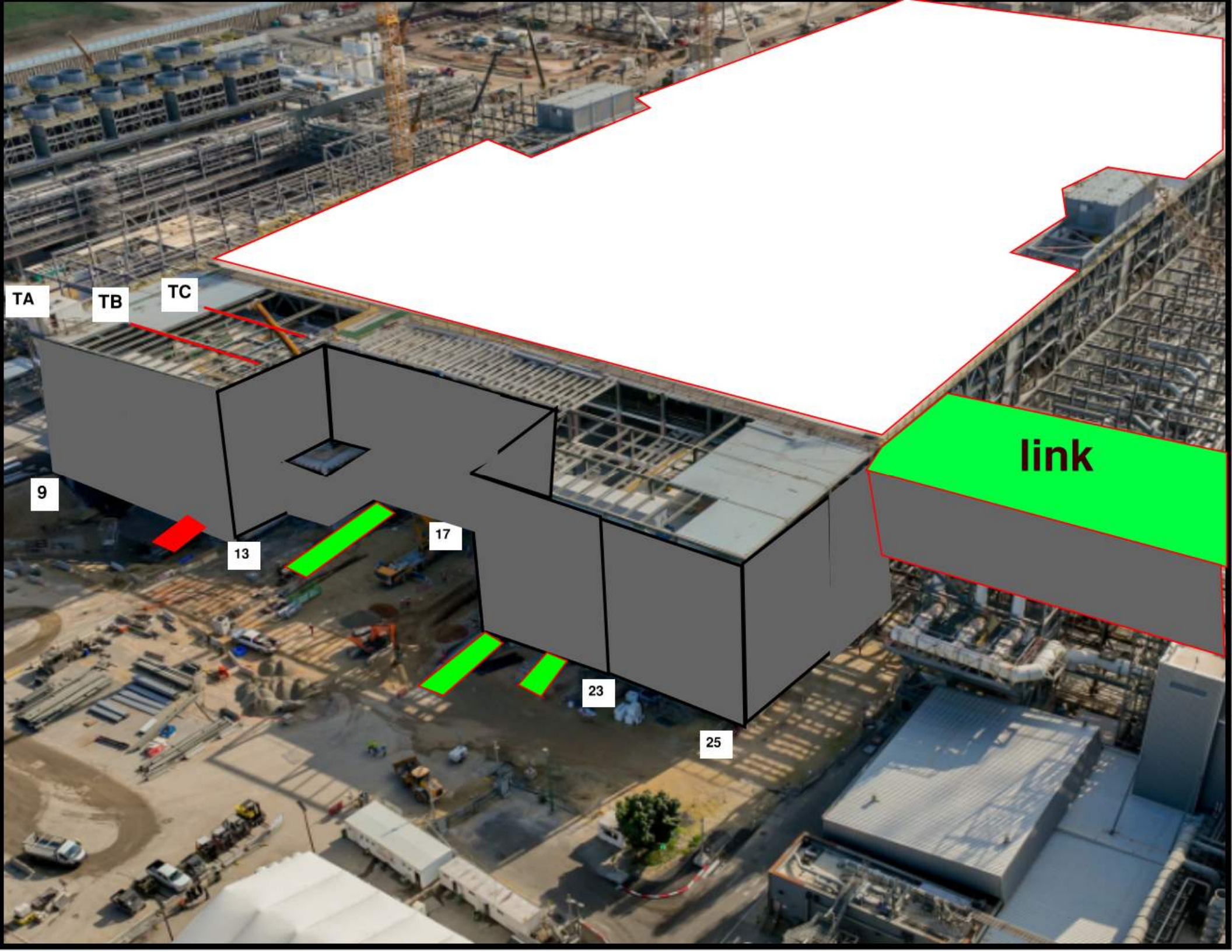




Siding Penetration Request Form



Subcontractor must fill out and submit all required cells in order to get a penetration cut through the siding.



TA

TB

TC

9

13

17

23

25

link



MOD 2 EASTSIDE GIRTS/SIDING

2752/ 2751	2742/ 2741	2732/ 2731	2722/ 2721	2712/ 2711	2552/ 2551	2542/ 2541	2532/ 2531	2522/ 2521	2512/ 2511	2502/ 2501
---------------	---------------	---------------	---------------	---------------	---------------	---------------	---------------	---------------	---------------	---------------

READY FOR GIRTS	
INSTALLING GIRTS	
READY FOR PANELS	
PANELS INSTALLED	

MOD 2 WESTSIDE GIRTS/SIDING

READY FOR GIRTS 

INSTALLING GIRTS 

READY FOR PANELS 

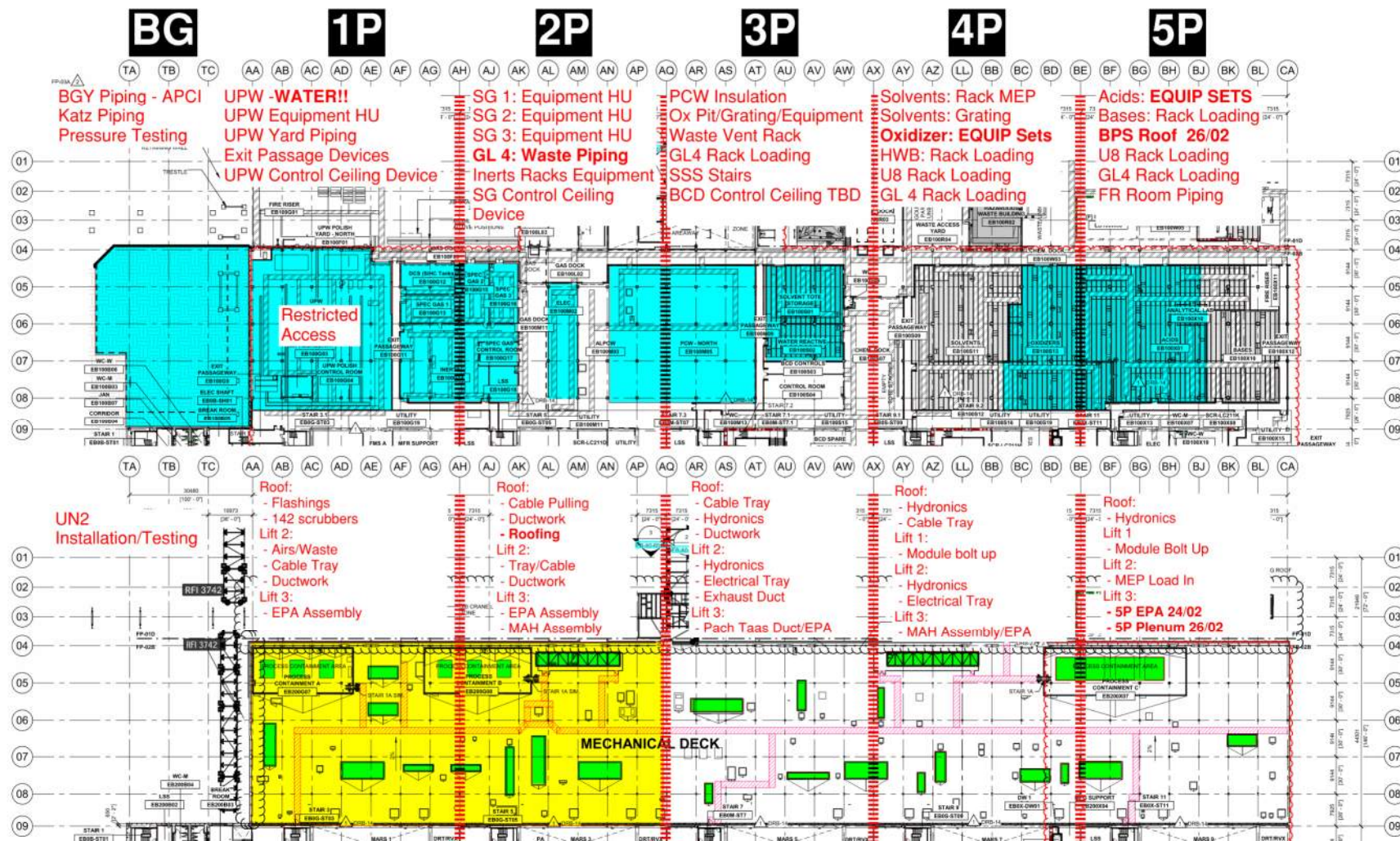
PANELS INSTALLED 

2602/ 2601	M I M O	2612/ 2611	MIMO 2622/ 2621	2632/ 2631	2642/ 2641	2652/ 2651	2812/ 2811	2822/ 2821	2832/ 2831	2842/ 2841	2852/ 2851
---------------	------------------	---------------	-----------------------	---------------	---------------	---------------	---------------	---------------	---------------	---------------	---------------

PSSS.1

Utility Level
1YA

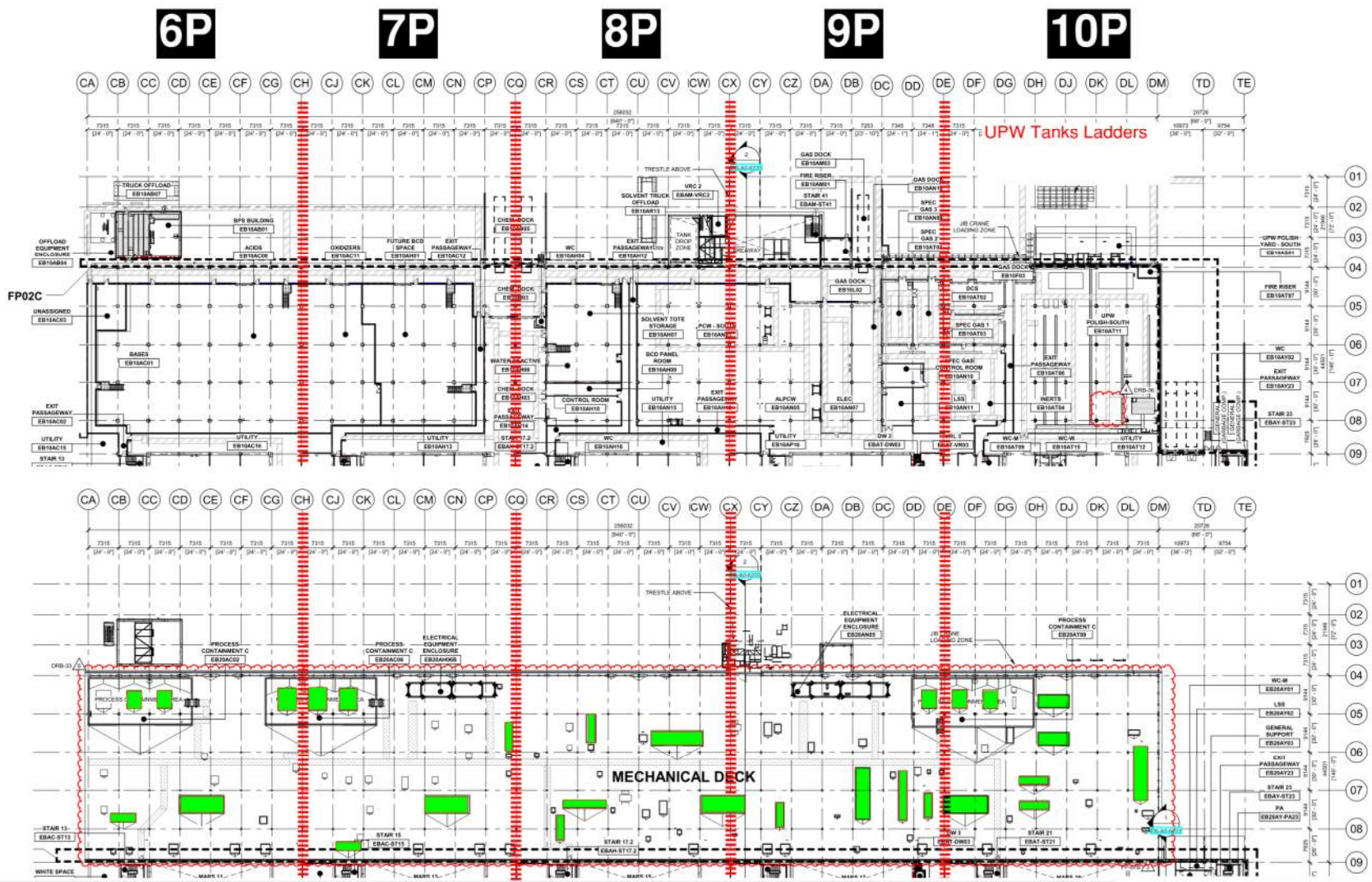
PSSS Roof
2SA



PSSS.2

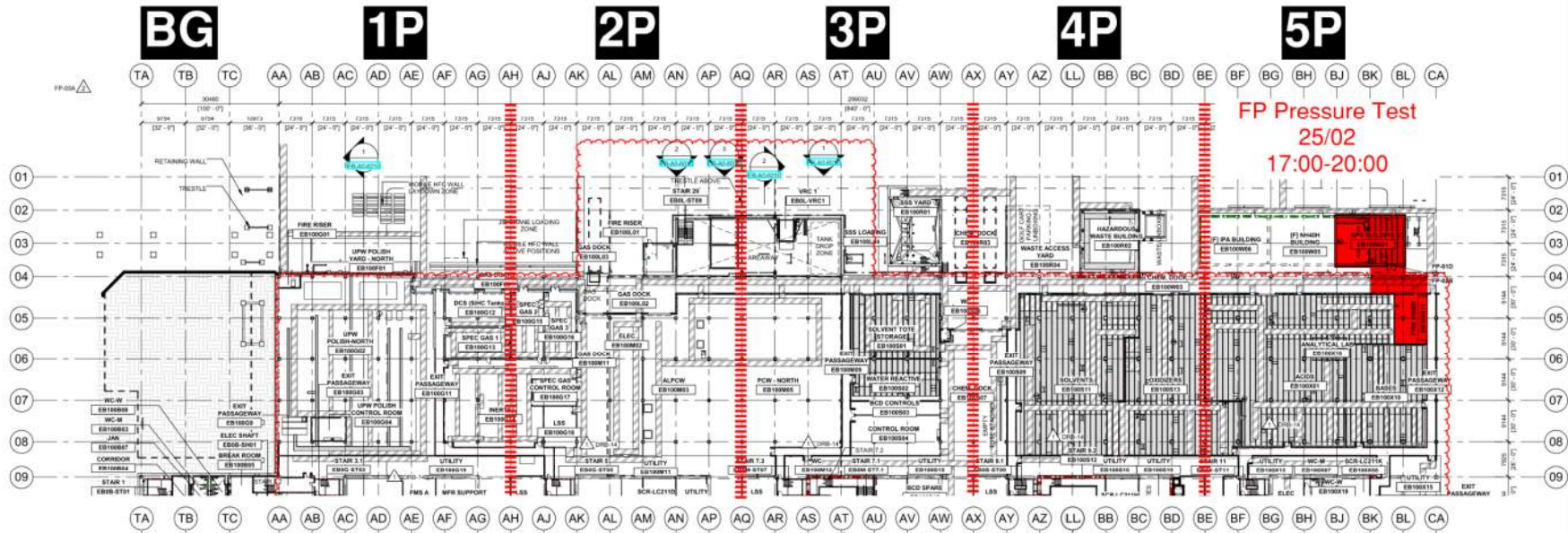
Utility Level
1YA

PSSS Roof
2SA

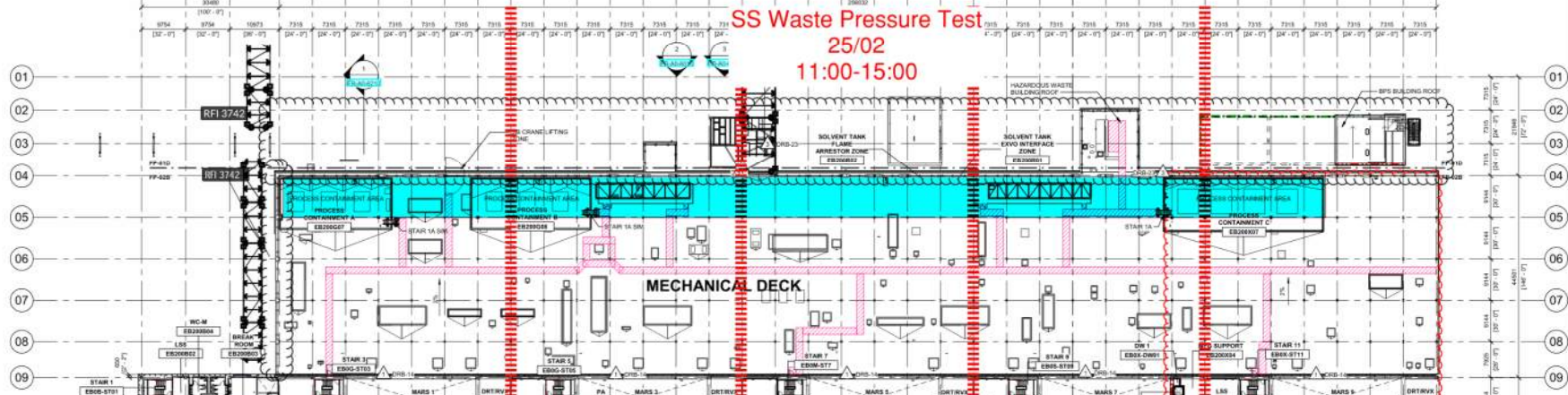


PSSS Pressure Testing

Utility Level
1YA



PSSS Roof
2SA



3800 Dismantle WW10





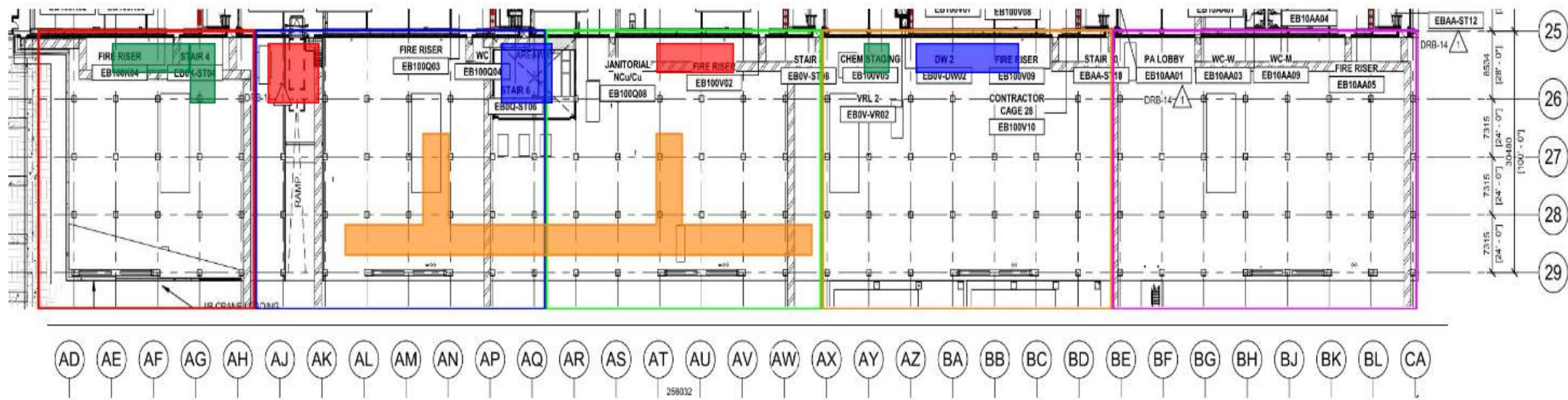
WJG – UL

* Megason - working on fire detection and alarm

* Afcon - installation of permanent lighting and cable pulling.
* Pach Taas - installation of modules in west SUT.
* Carmel Bidud - working on dampers and ducts into the FAB

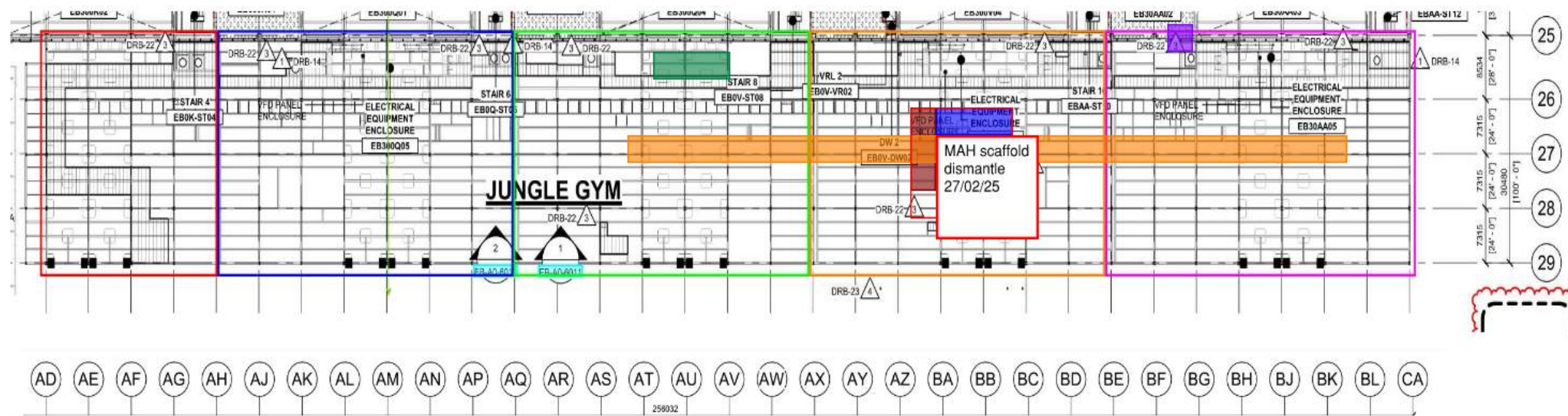
* Afcon - installation of permanent lighting and cable pulling to the fixtures.
* Pach Taas - installation of wall penetrations

* SK - installation of 3" cooper pipe
* W&W - welding of shims for outriggers



WJG – Lift 2

		* Pach Taas - installation of 1800 mm module and WP.	* SK - installation of CRW pipes to MAH. * Afcon - pulling cables and doing connections to MAH. * 4J MAH scaffold will be dismantled on 27/02/25	* Chemo Aharon - finishing Insulation and filling UPN 117 with water for pressure test. * Chemo - pipe fitting for MARS pipes
--	--	--	--	--



WJG – Lift 3

		* Pach Taas - working on bypass ductworks.		* Chemo - pipe fitting for MARS pipes
--	--	--	--	---------------------------------------



Pressure check for UPN 117 – UL

UL level(West JG) - Grids AL to BJ, 25 to 27



Pressure check for UPN 117 – LIFT2

Lift 2 - Grids AL to BJ, 25 to 27



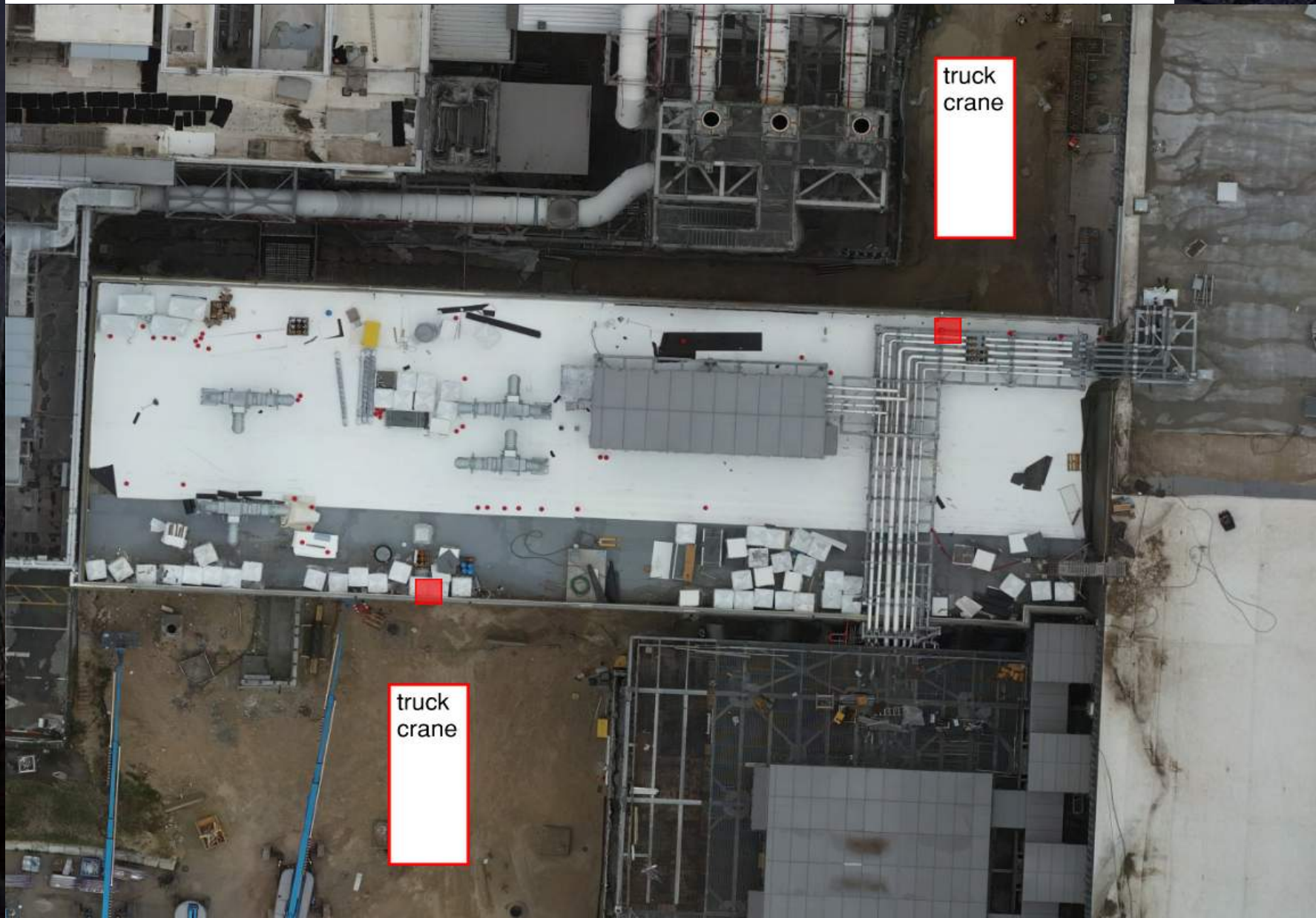
Crane logistics

Crane: 500 ton crane
location: AQ on west
road

Crane: 650 ton crane
location: BE-BK on west
road. waiting for crane
pad build.



Removal of temp columns



CUB 1 Evacuation Muster area North Yard

Paving North Yard WW 7

BCS/BSA-JEA IA status for Tie in 253 complete 252 Feb 19-20

Pump 261-1,2,3,5,7 Start up WW 9 Bump Test 261-1,2-95 Feb 24

LVSS Shut down for Com cable pull Feb 20 0900-1200 Brand Roxtec Firestopping ongoing

TMWX to Roof Trestle Pressure Tests Jan 26 RE Test ongoing

Insulation, Labeling Feb 5 QC walk DV Feb 10

NH4W to Roof Trestle Pressure Tests Inner pipe Jan 23 RE Test ongoing

Overhead Catwalk install ongoing Feb 10-March 27

Chiller starts : 111-7 Feb 20. 111-6 Feb 25. (Rockwell Trane CX onsite) : March 4-11 126-3 A/B March 12-19 111-1 A/B.

NATURAL GAS EXCLUSION ZONE

Revised Access

FUEL OFF LOADING INTEL ACCESS ONLY

Scaffold Removal or Modify March 6

WWT OPS READY/ PUNCHLIST RESTRICTED ACCESS SEE RED AREAS

NATURAL GAS EXCLUSION ZONE

Boilers CX Natural Gas to Boiler Feb.24-27

Oil Fuel Tank

Water Treatment

North Yard

East Yard

Electrical

Chillers

Sand Filters

Boilers

NH4W

WWT

Analyzer Room

Truck Offload 1, 2, 3, 5, 6, 7

Stair 1, 2, 3, 6, 7, 8, 9, 10, 11, 12, 13, 14, 15, 16, 17, 18, 19, 20

Ramp 1, 2, 3

PA

WC

JAN

FIRE RISER

SCR

LSO

FMS CONTROL ROOM

MECH CONTROL ROOM

MECH WORKSHOP

LIWS LAB

I&C LAB

AWN 261

STAIR (TO ROOF)

STAIR 2 (TO ROOF)

STAIR 20

From	Circuit Number	To	Owner
3C11_E03-DNS023	5	LC23-FLT114-1-60	@Cooney, ZacaryX
3C11_E03-DNS023	6	LC23-FLT114-4-60	@Cooney, ZacaryX
3C11_E03-DNS023	18	LC23-VFD114-10-90	@Cooney, ZacaryX

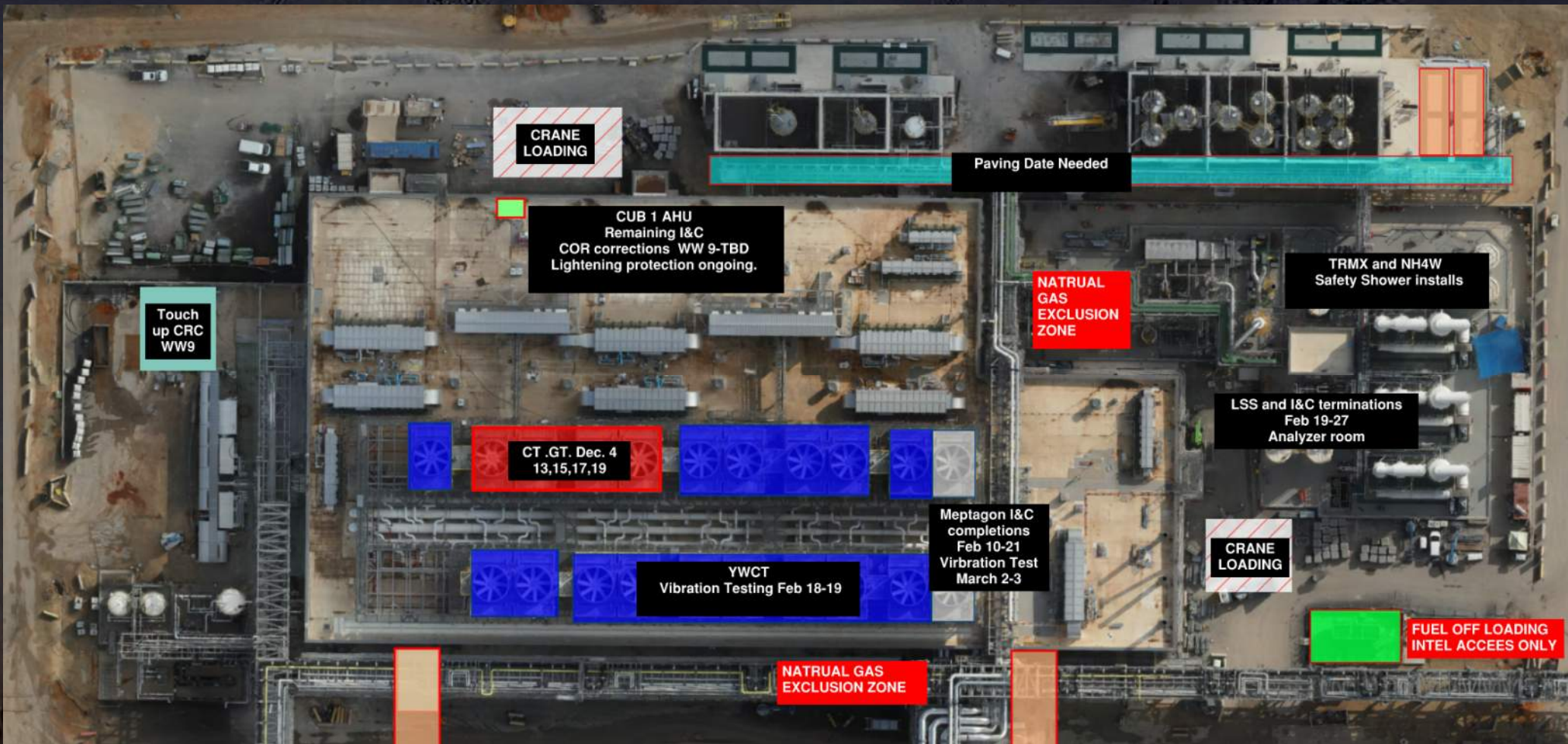
CTB 114

SWS 237

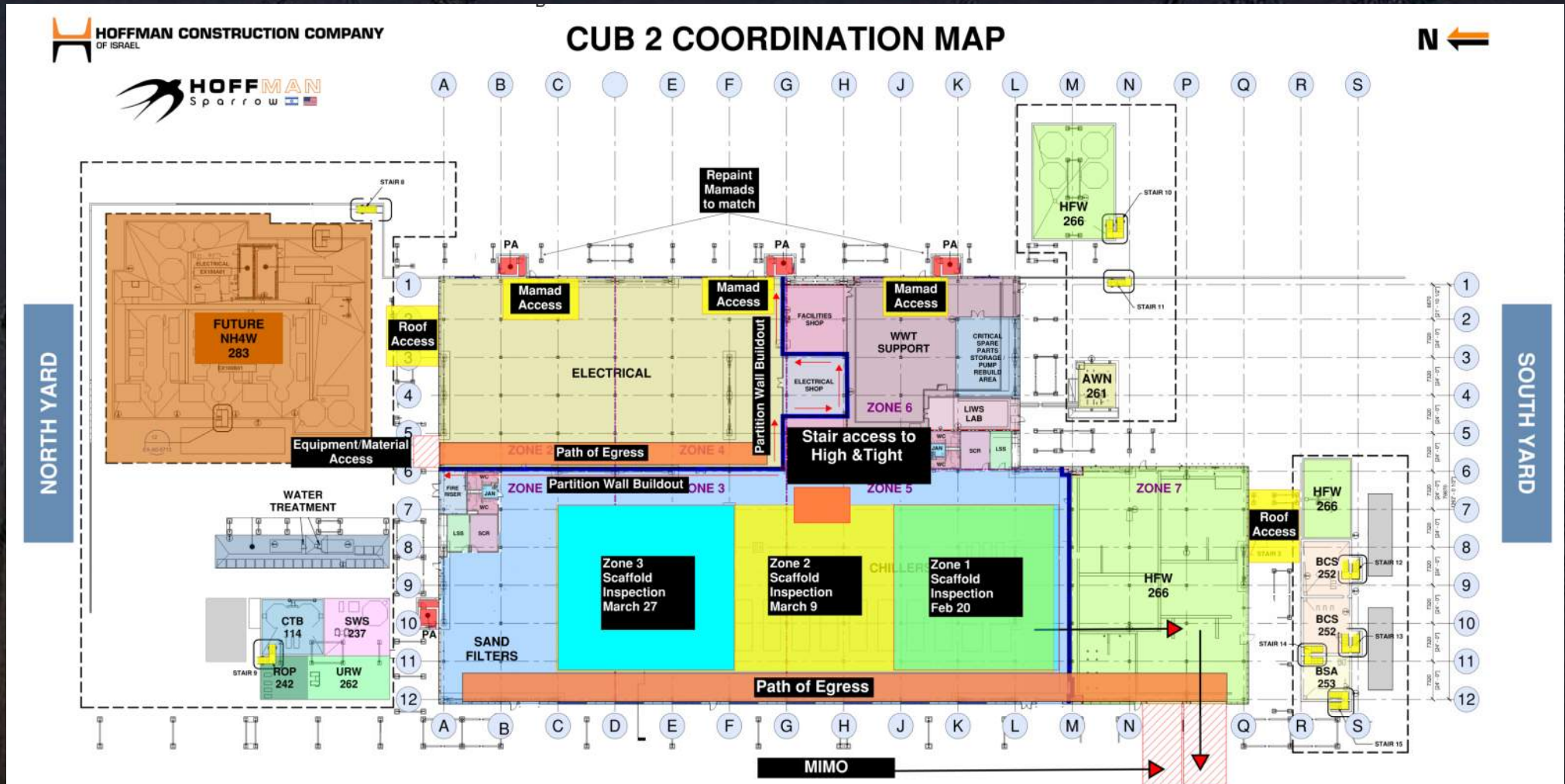
ROP 242

URW 262

CUB 1 – EXTERIOR/ROOF



CUB 2- Load in ,H&T, Framing and Sheetrock



CUB 2 – EXTERIOR/ROOF





HOFFMAN CONSTRUCTION COMPANY

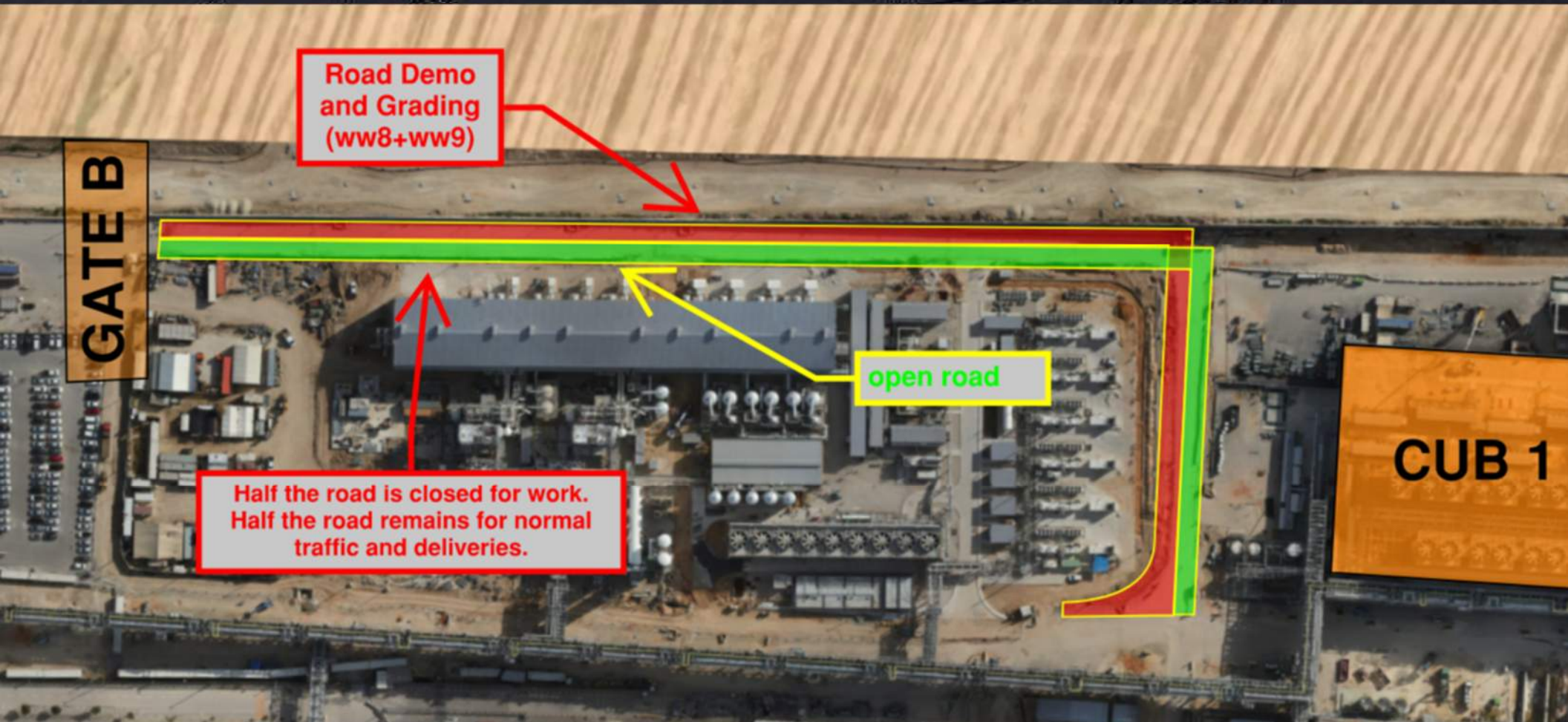




Daily Coordination Meeting

Site Logistics

North

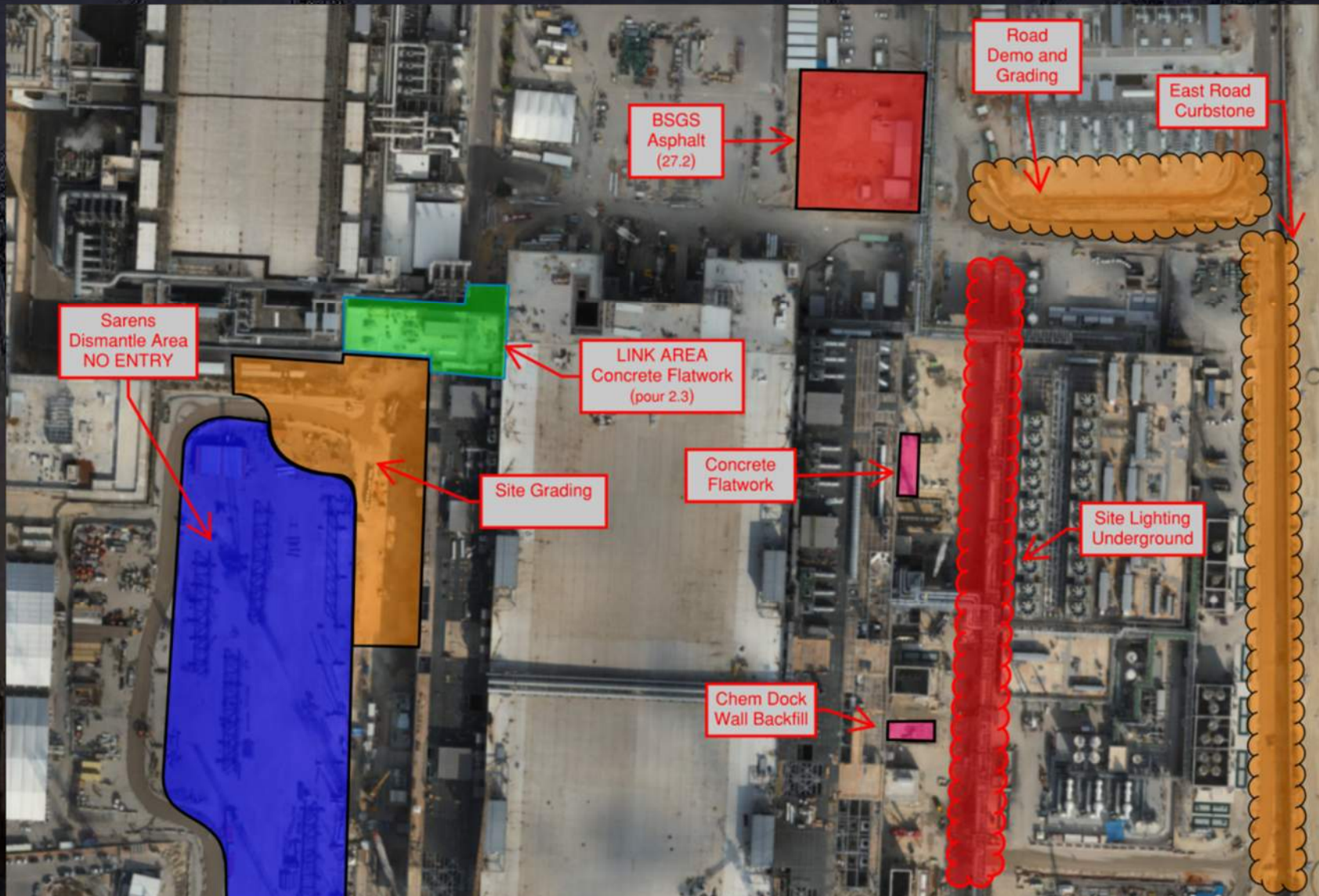




Daily Coordination Meeting

Site Logistics

North





HOFFMAN CONSTRUCTION COMPANY



Daily Coordination Meeting

Site Logistics

South



Violations

Large number of team leaders involved in violations.

Lots of energy from management trying to save them after they get in trouble.

Invest in your leaders with training, support, and planning to help them and your company be successful.

When the work changes help them plan new method statements and Risk assessments.

Daily Coordination Meeting



14:00 Sign In