

Daily Coordination Meeting



14:00 Sign In

Daily Coordination Meeting

General Topics:

- * BCP & BD milestones achieved 19 Dec
- * 27 Dec site closure
- * GIS gate closes 29 Dec
- * Theft will be Prosecuted to Furthest Extent of Law



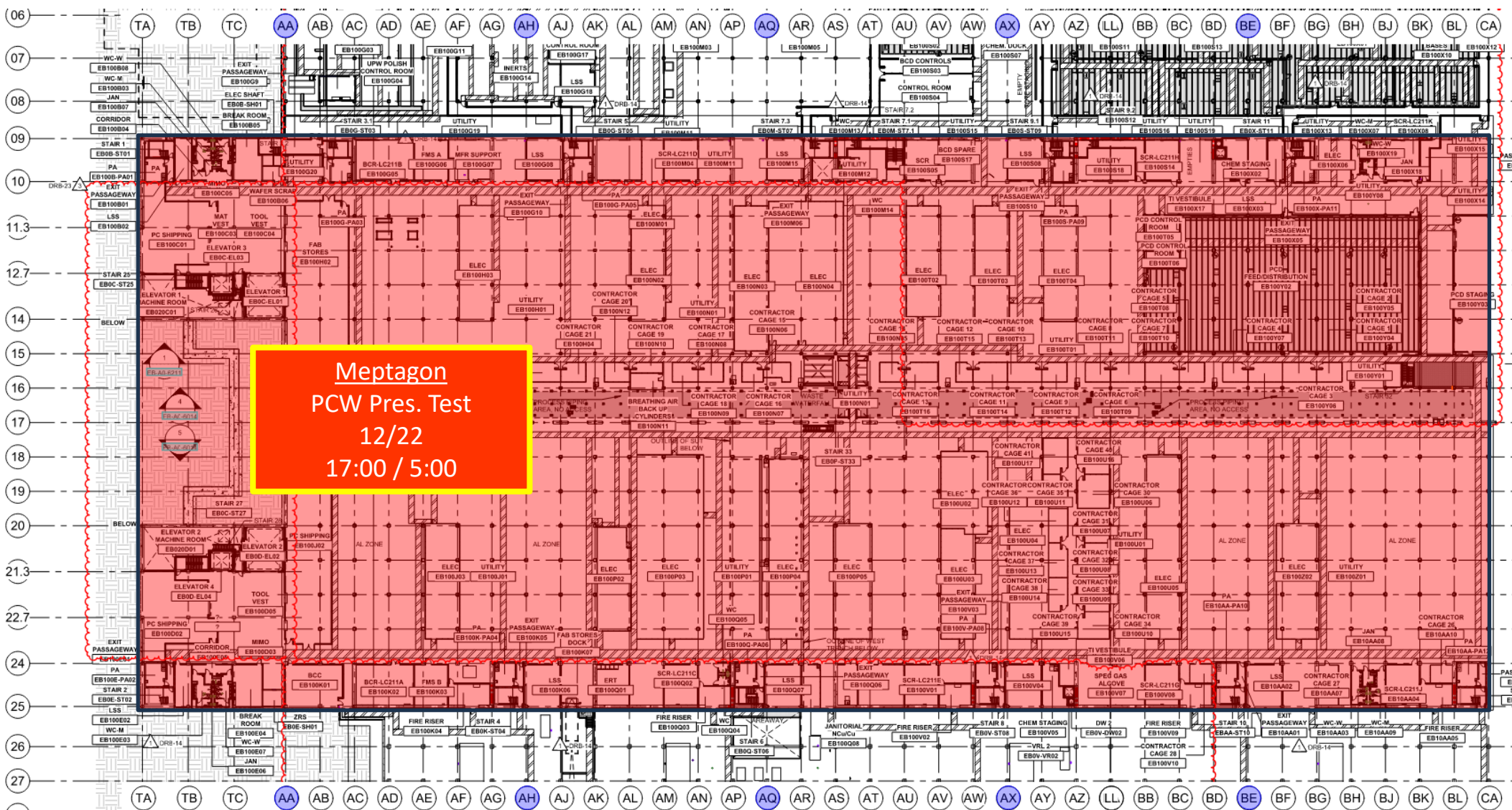
CUB1 Stair ext.
3:00 am

TC3 pour back UL
2:00 am

RES16B SOMD
10:00 pm

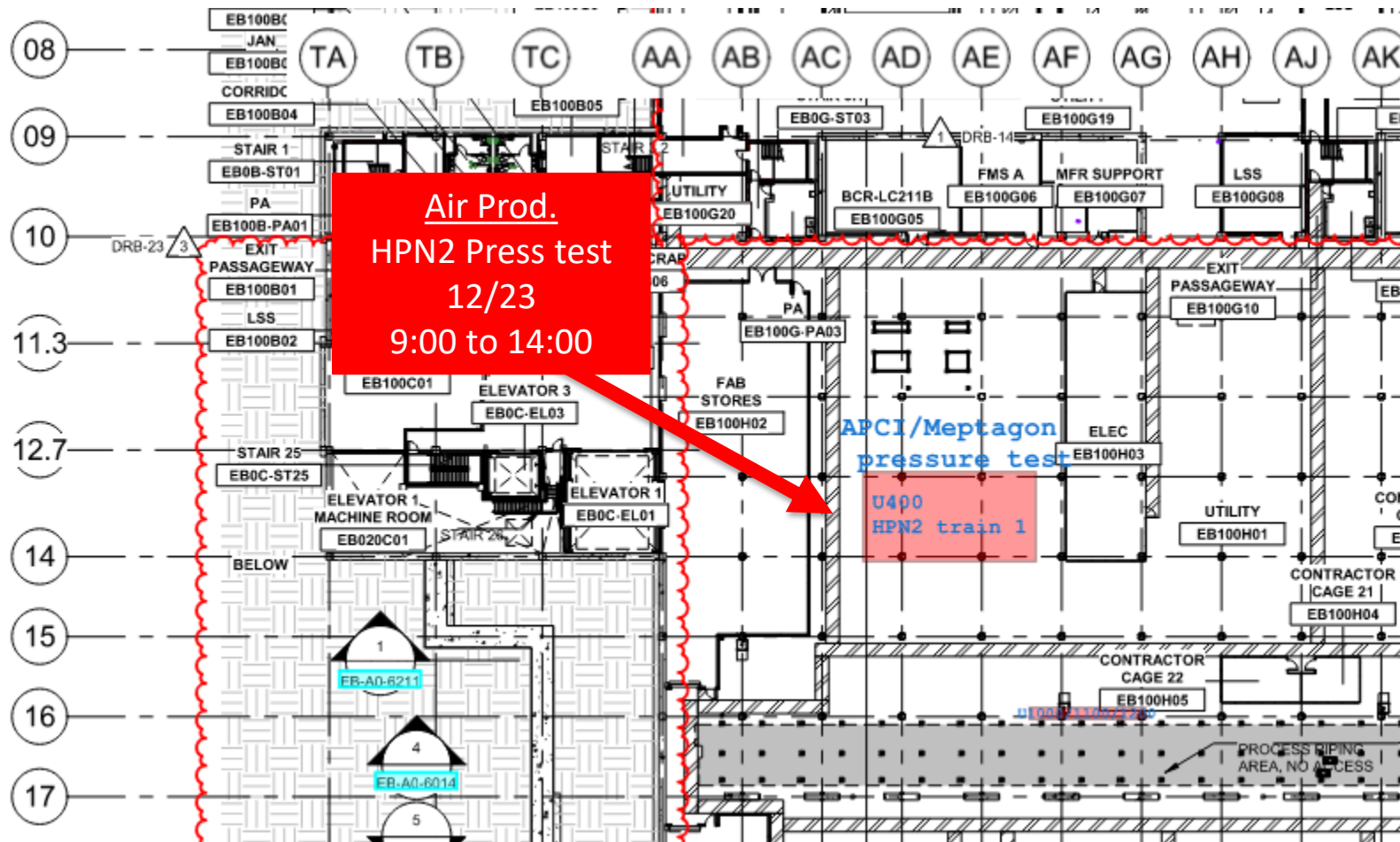


UTILITY LEVEL PRESS TEST



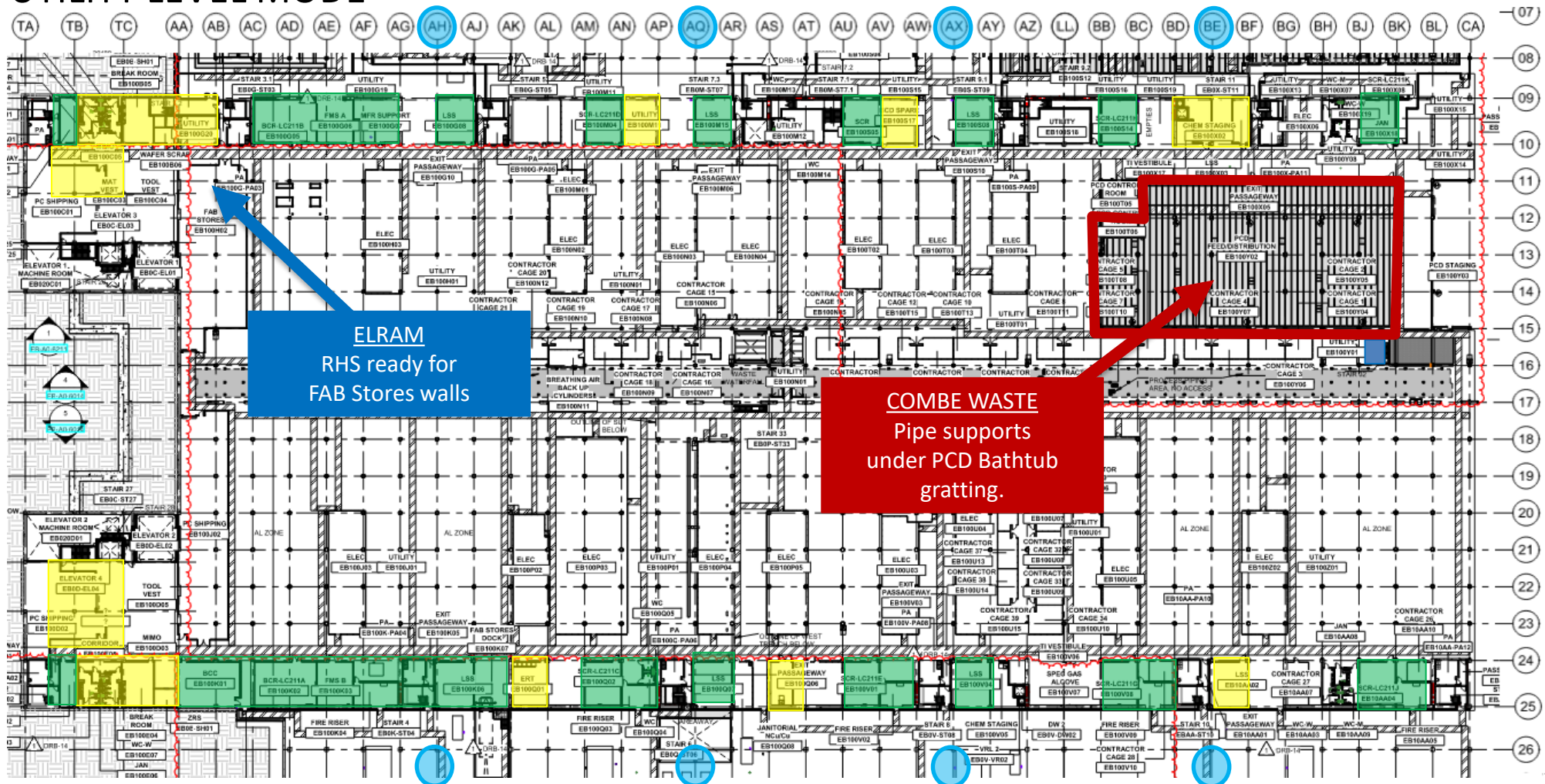


UTILITY LEVEL PRESS T.





UTILITY LEVEL MOD1



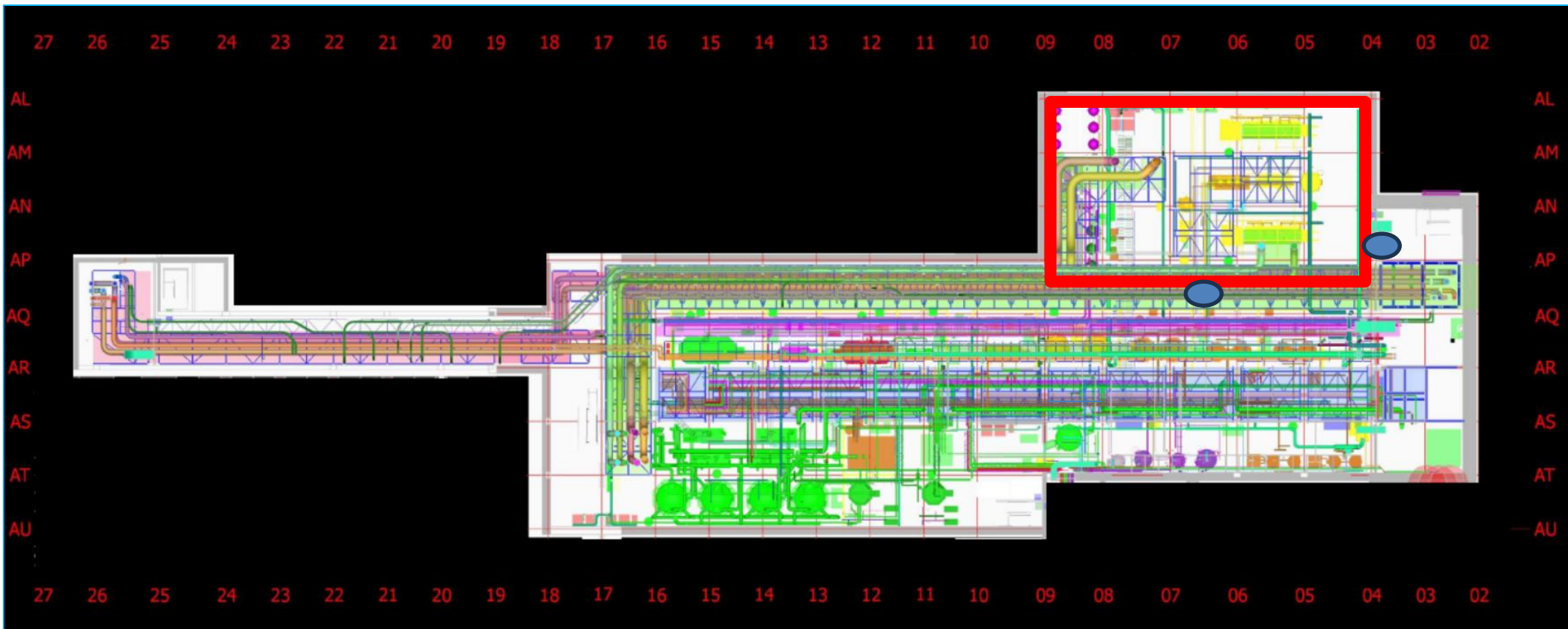
ELRAM
Drywall install

MEP+Electrical
Ready for re-install



MALHIMIM
8W & 9W
Ongoing

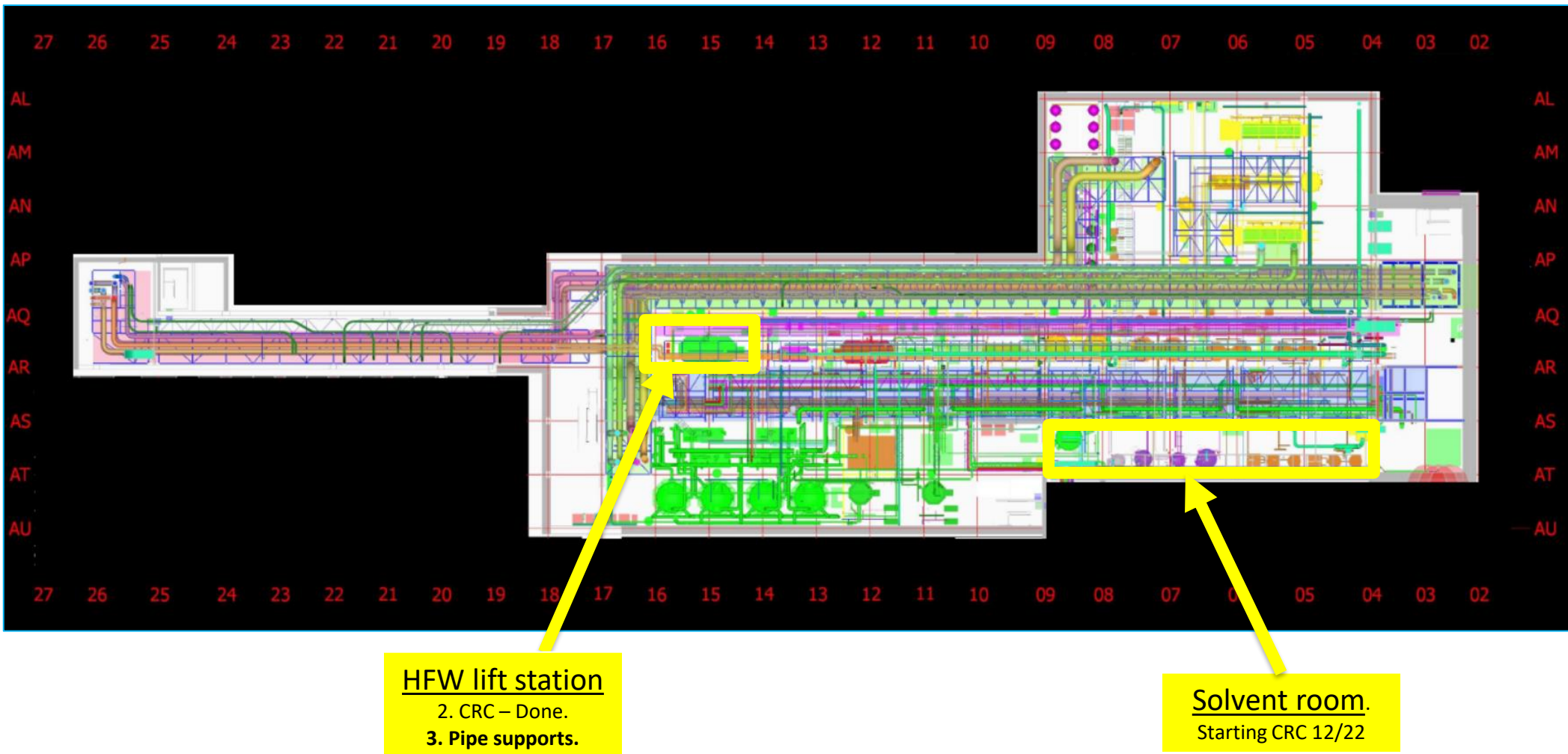
SUT 38.1 LEVEL



SKE IA/PA **official** Pneumatic pressure
test
140PSI
23/Dec 18:00-23:00 Monday



SUT 38.1 LEVEL



SUT 38.2 LEVEL

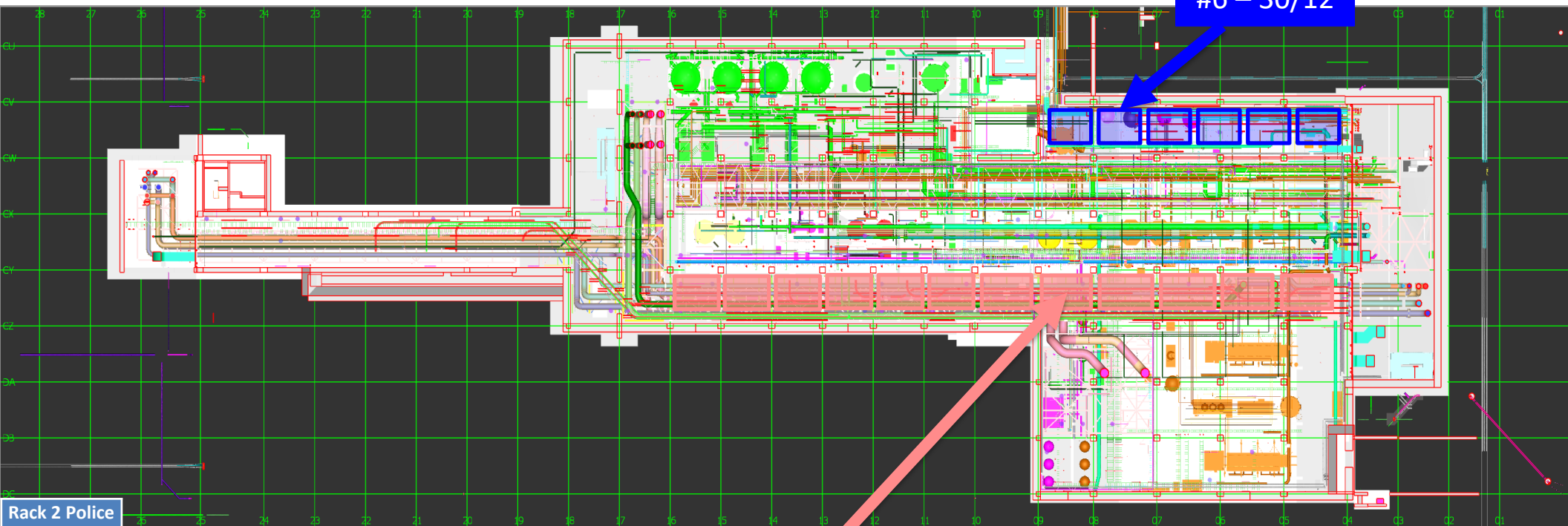
Rack 4b

Lifting
schedule

#4 – 22/12

#5 – 26/12

#6 – 30/12

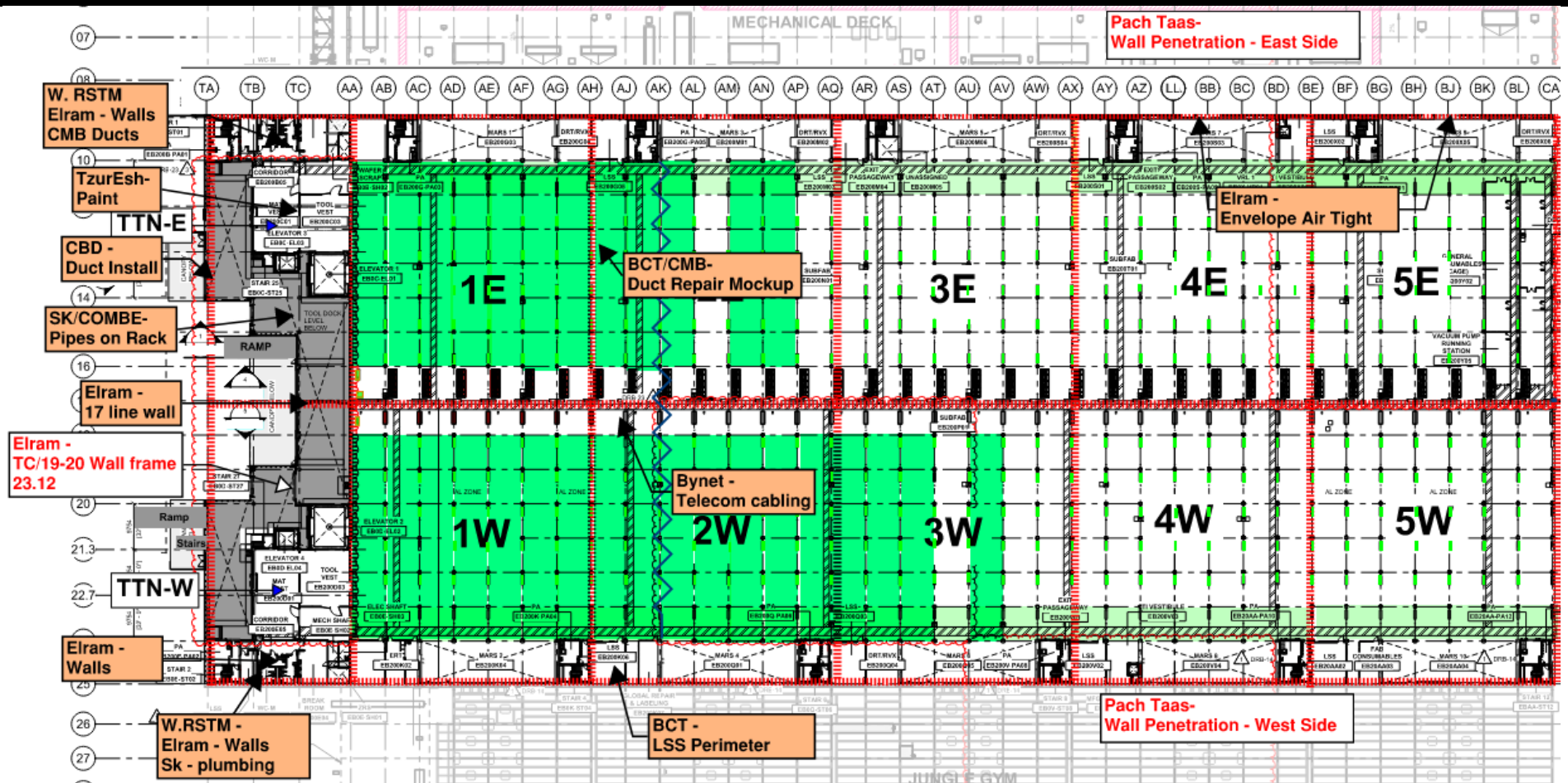


**Rack 2 Police
escort dates**

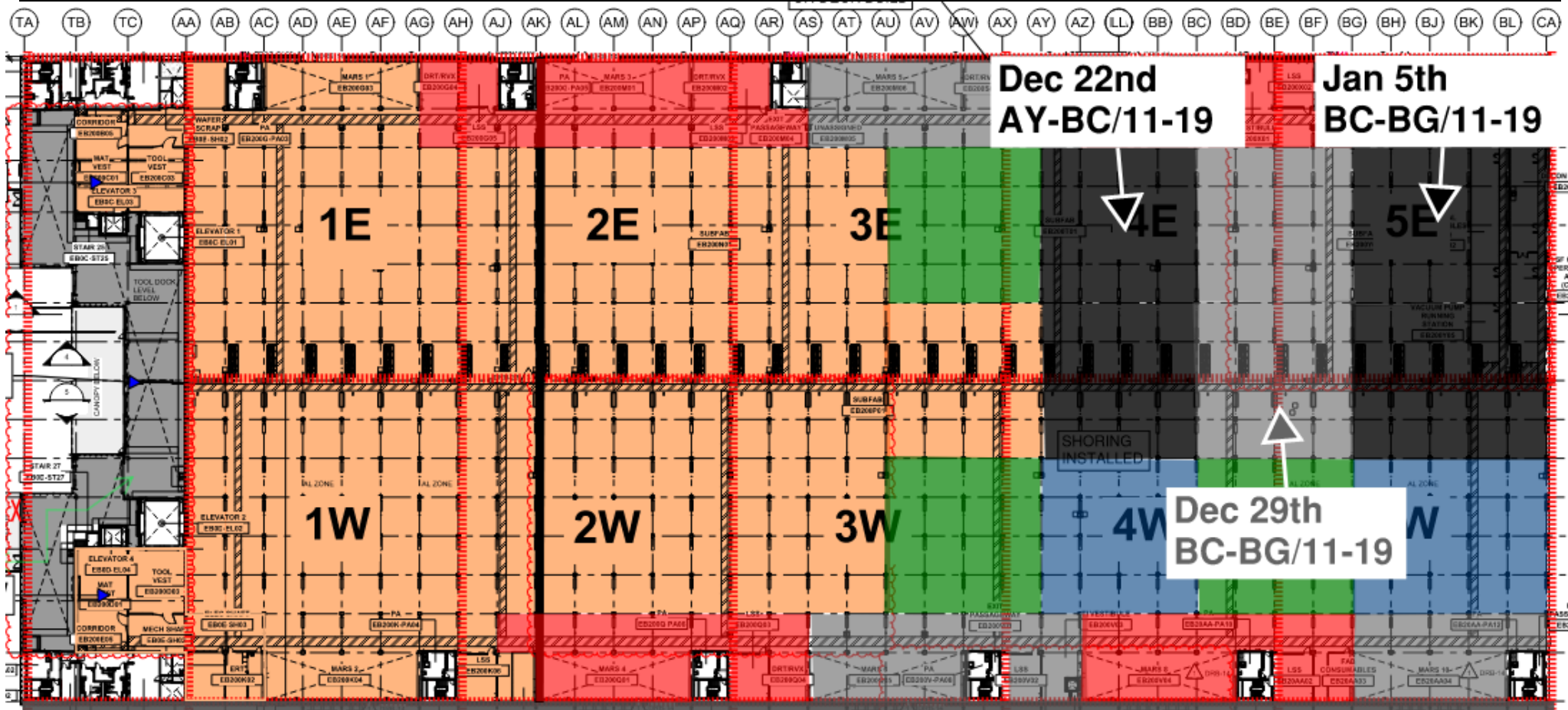
v24.11.24
v25.11.24
v3.12.24
v9.12.24
v12.12.24
v15.12.24
v17.12.24
22.12.24
5.1.25
14.1.25
2.2.25
9.2.25

Rack 2
MIMO -
Module #8
22th of Dec

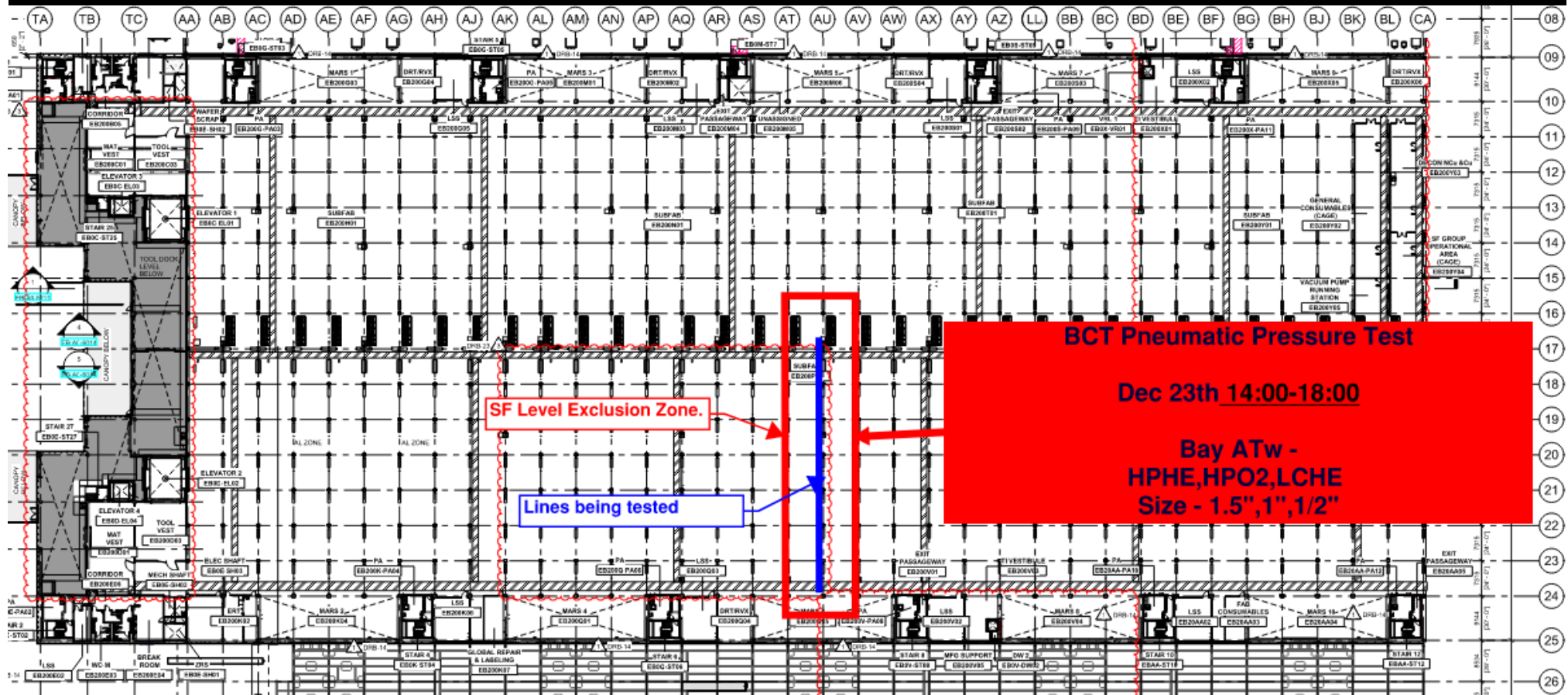
SUBFAB BUILDOUT MOD 1



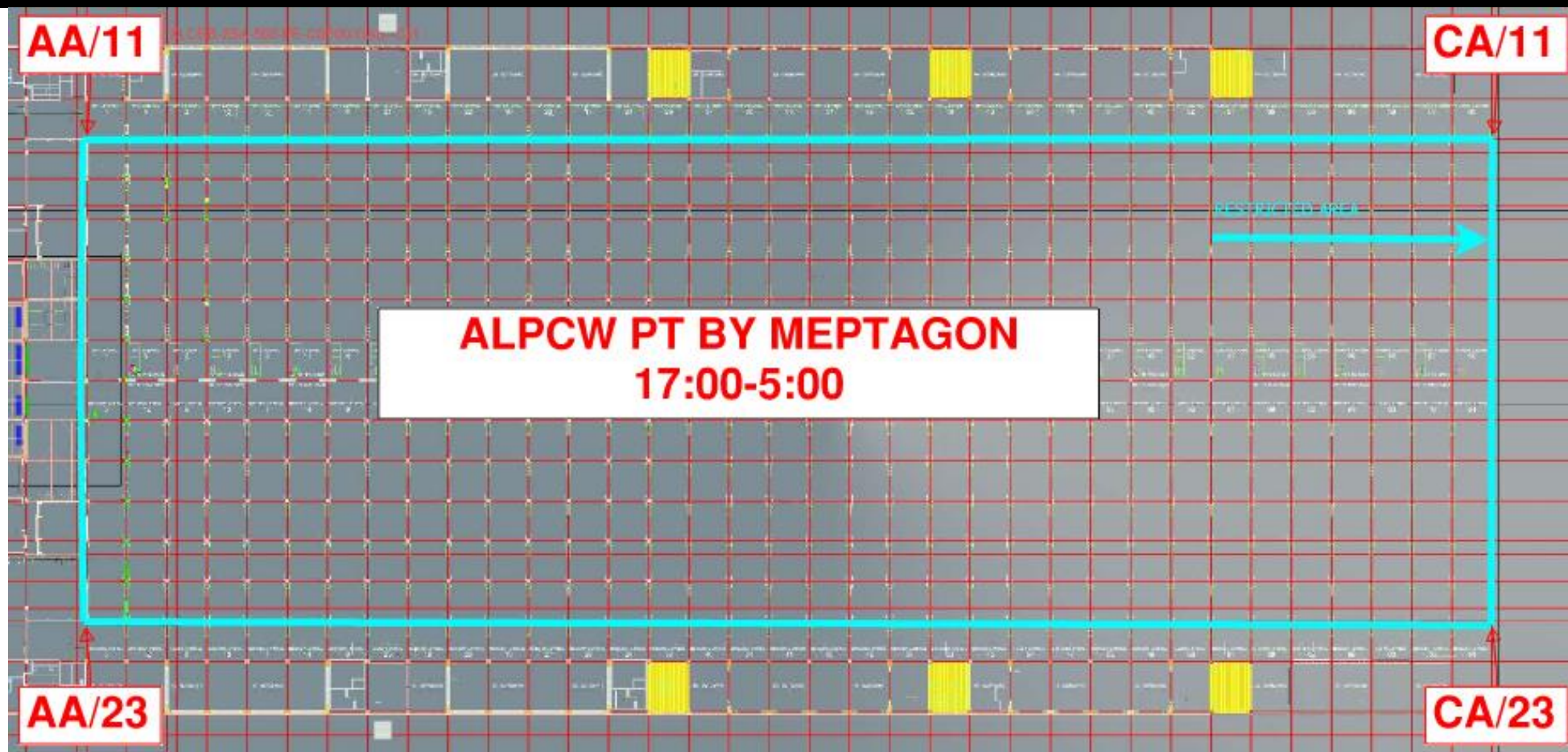
SUBFAB CRC TOPCOAT



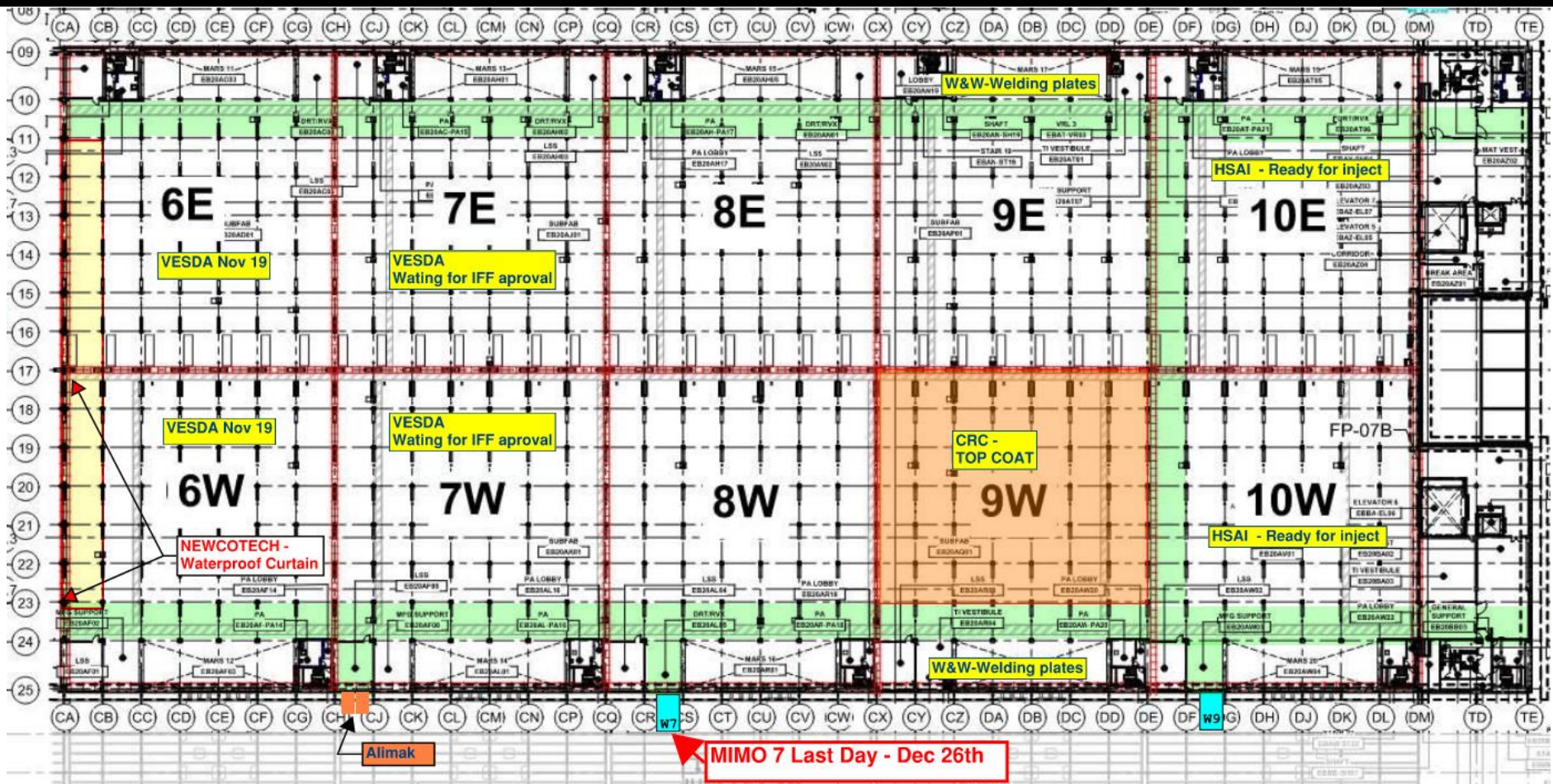
BCT Pressure Test Tomorrow

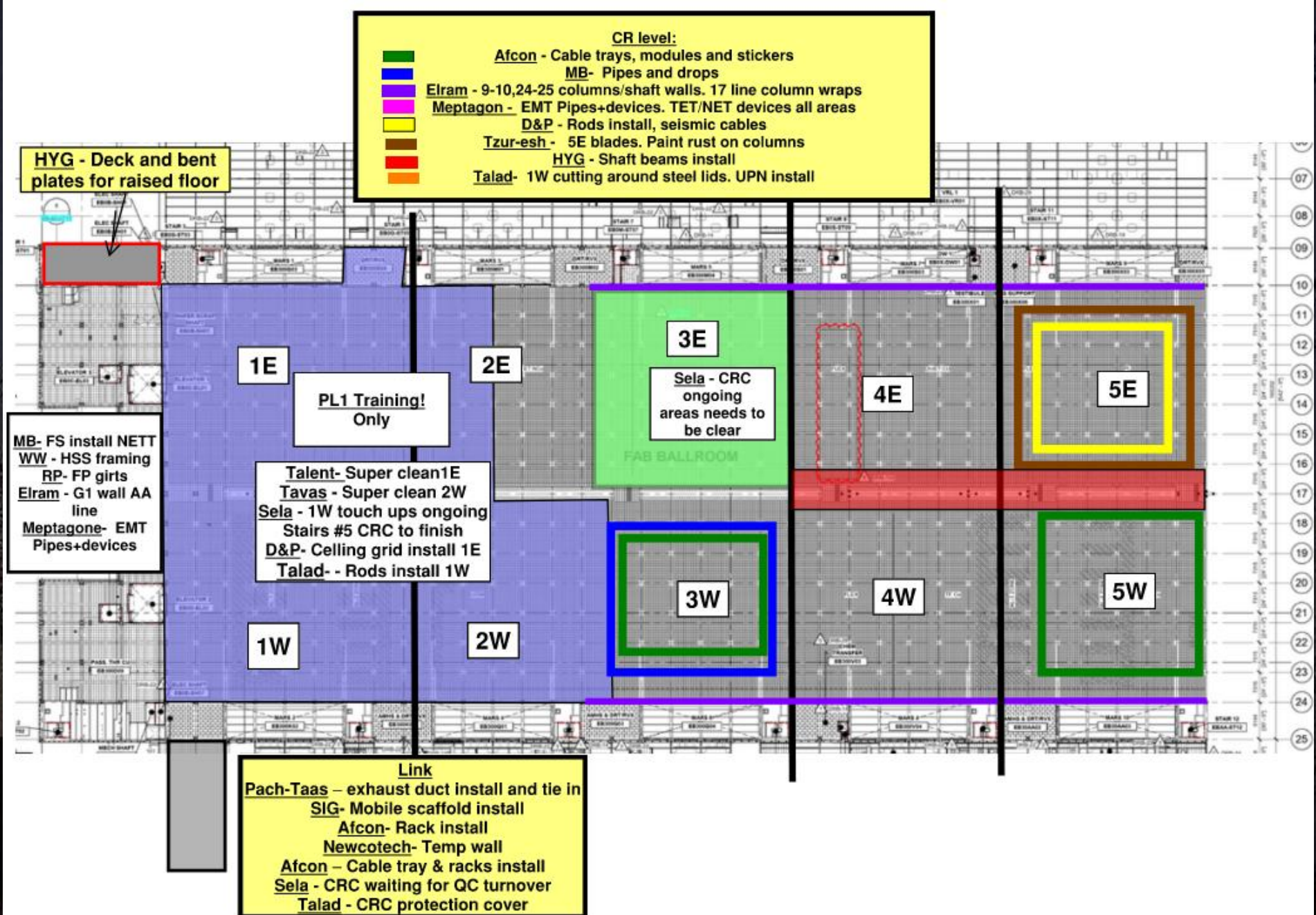


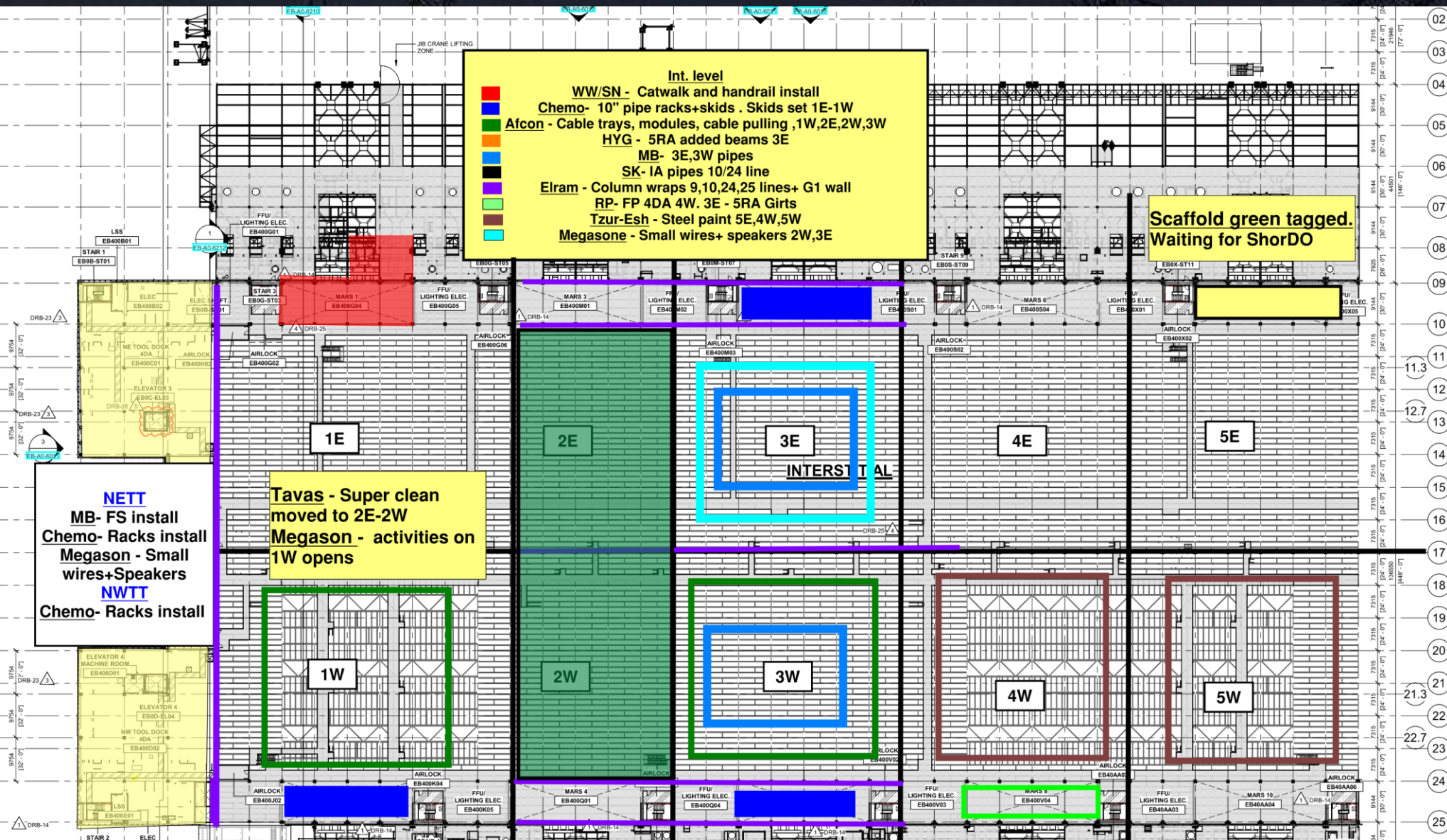
MEPTAGON Pressure Test Today

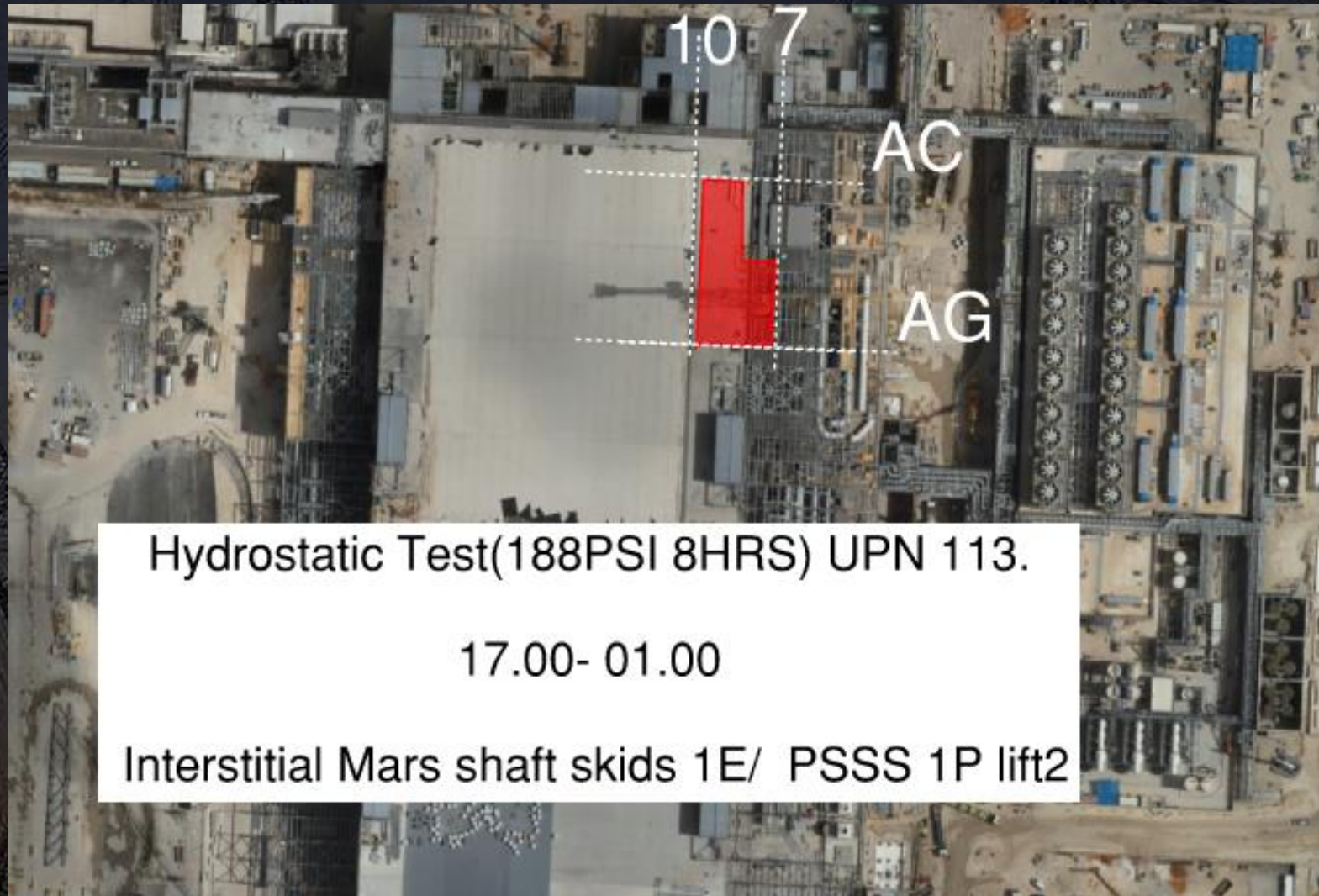


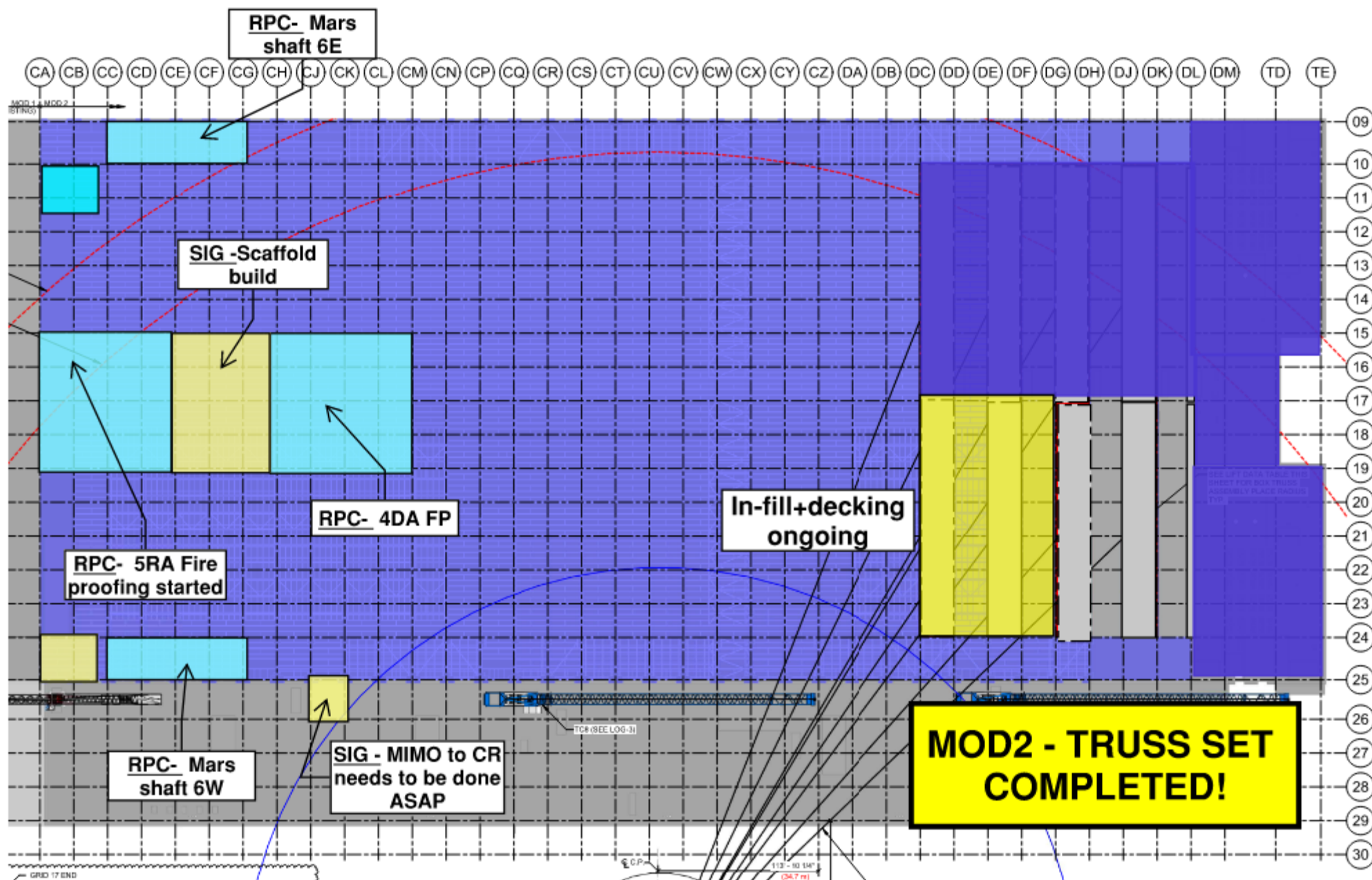
SUBFAB BUILDOUT MOD 2

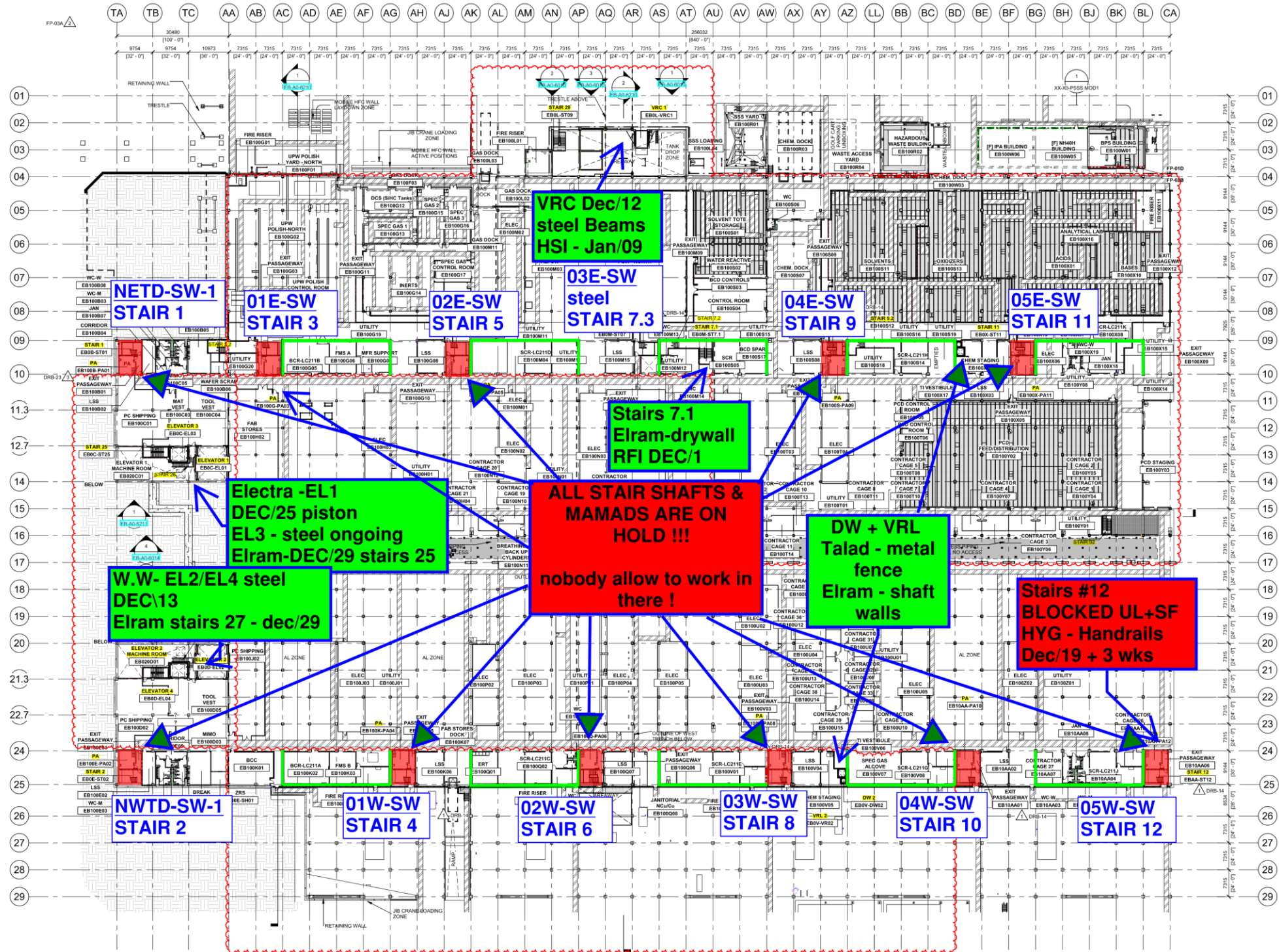












Siding - West FAB - JYG

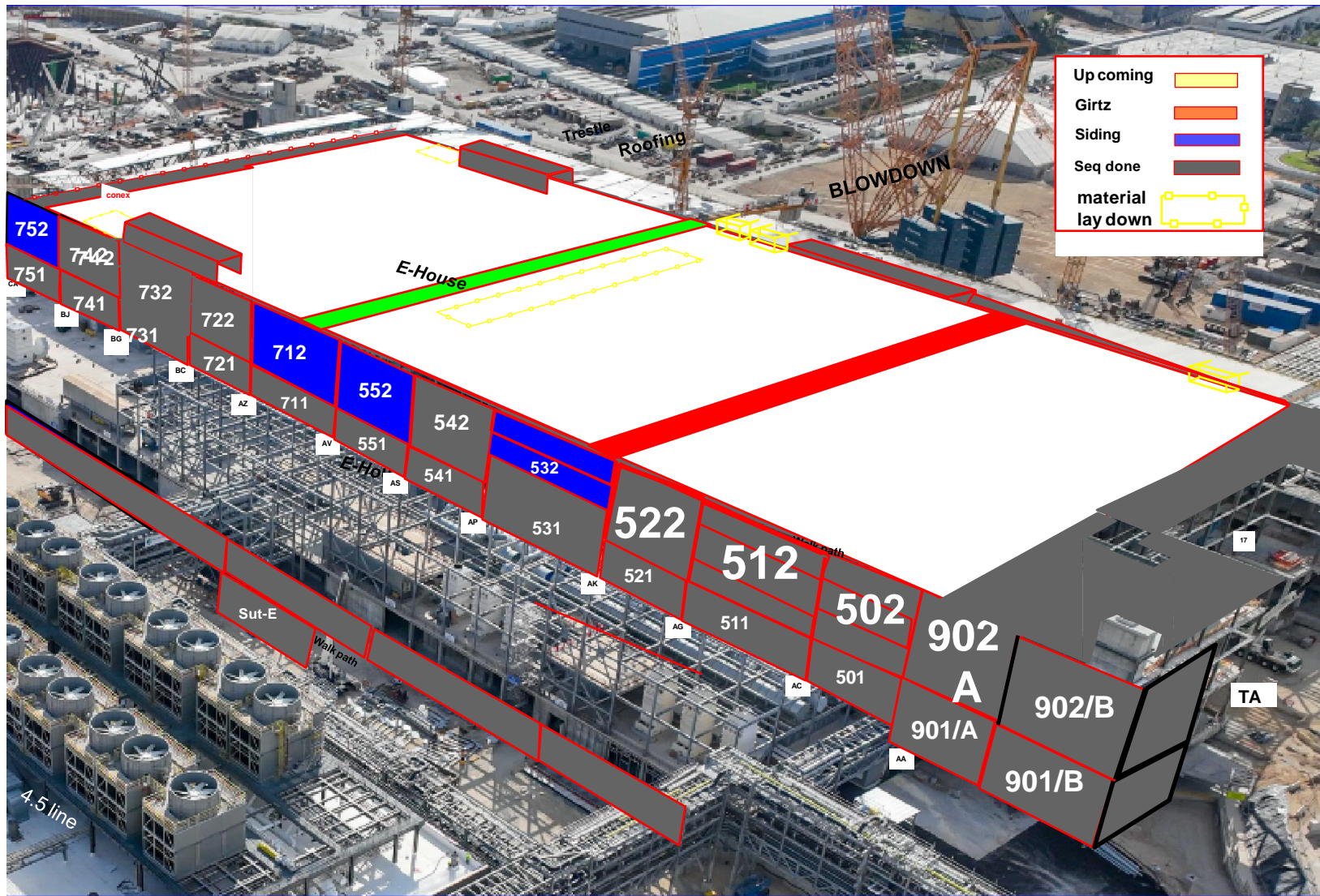
BLOWDOWN 30%

[illegible]

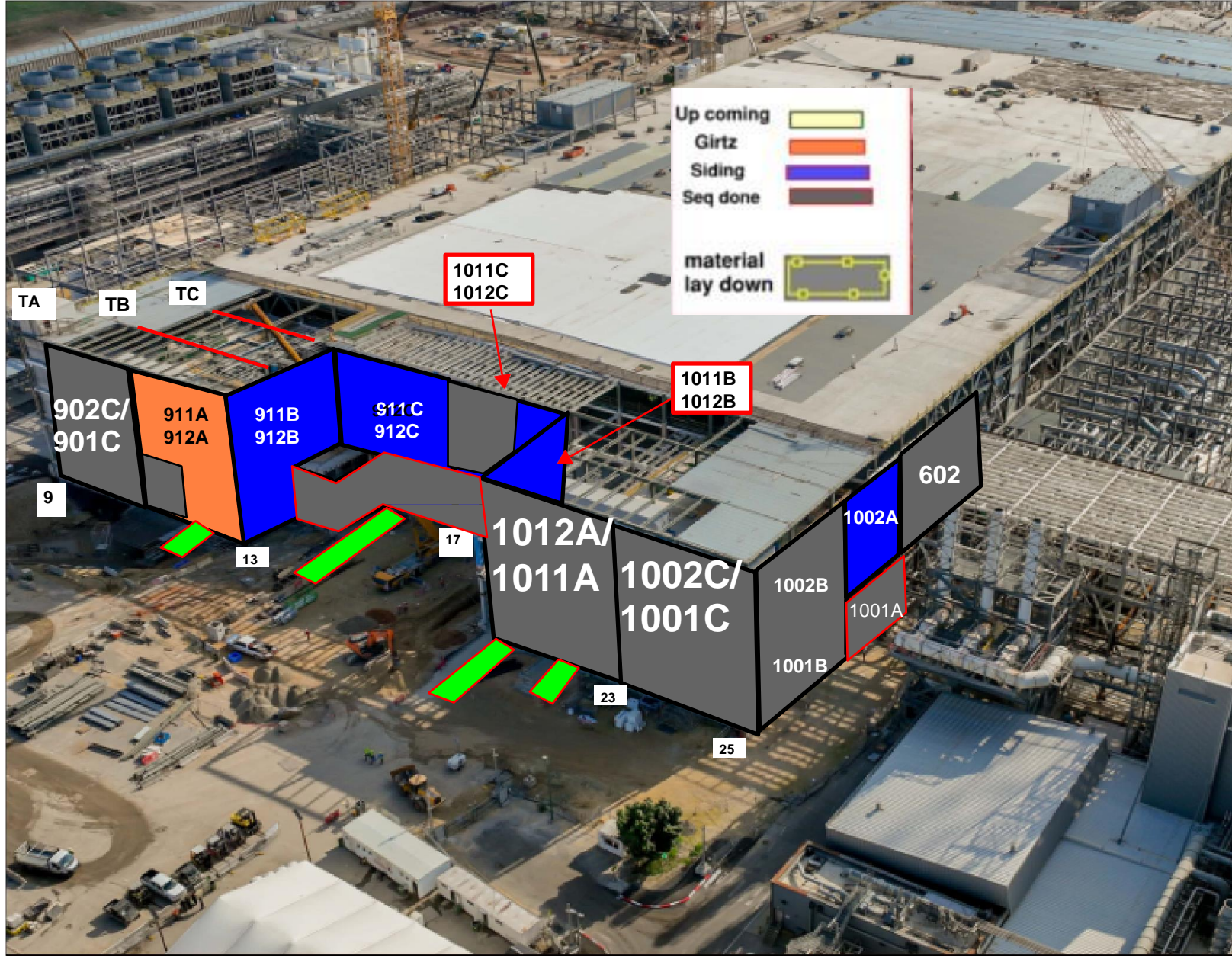
Siding - East FAB - PSSS

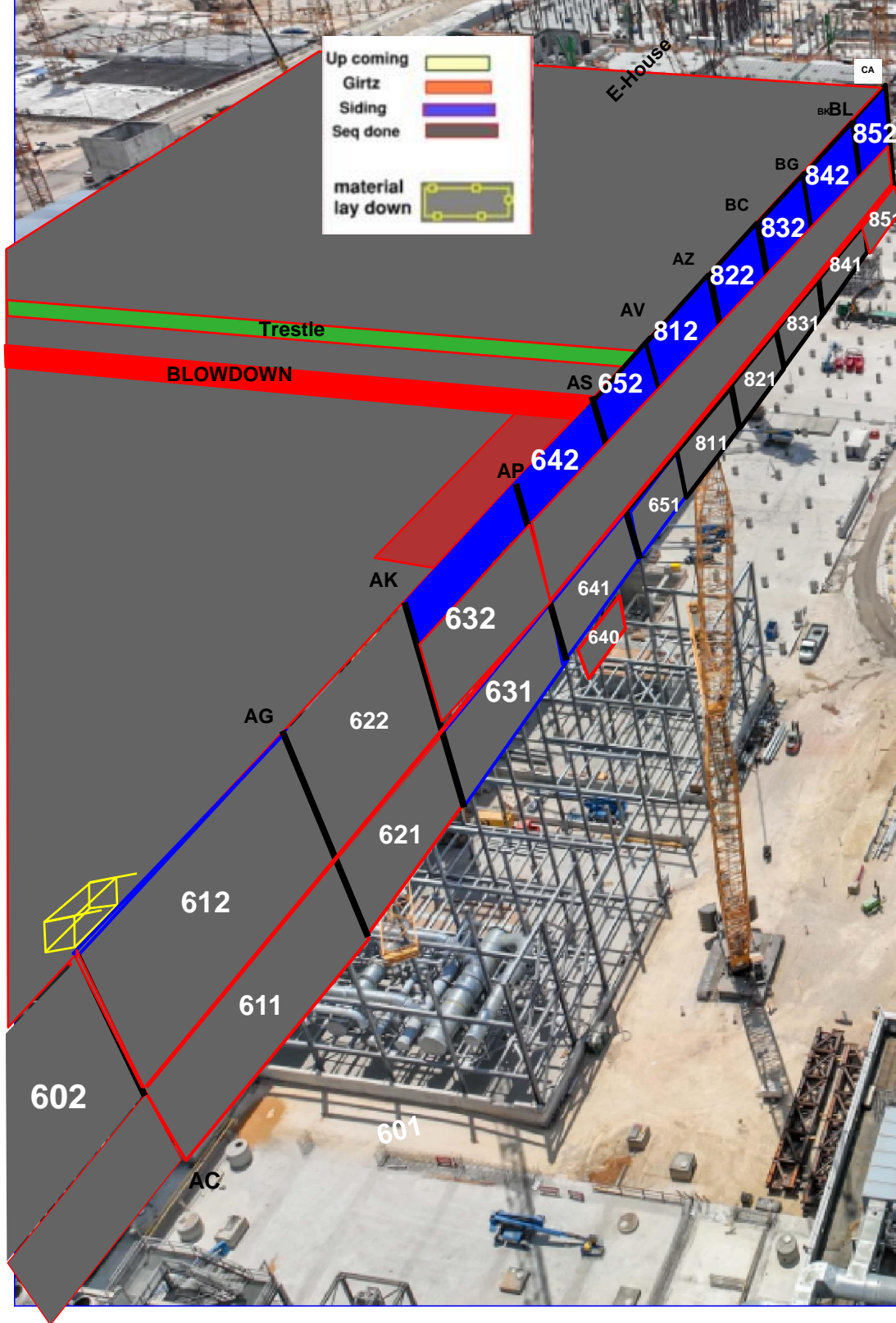
BLOWDOWN 30%

751/752		741/742		731/732		721/722		711/712		551/552		541/542		531/532		521/522		511/512		501/502		491/492		481/482		471/472		461/462		451/452		441/442		431/432		421/422		411/412		401/402		391/392		381/382		371/372		361/362		351/352		341/342		331/332		321/322		311/312		301/302		291/292		281/282		271/272		261/262		251/252		241/242		231/232		221/222		211/212		201/202		191/192		181/182		171/172		161/162		151/152		141/142		131/132		121/122		111/112		101/102		91/92		81/82		71/72		61/62		51/52		41/42		31/32		21/22		11/12		1/2																																																																																																																																																																																																																																																																																																																																																																																																																																																																																																																																																																																																																																																																																																																																																																																																																																																																														
24	24	24	24	24	24	24	24	24	24	24	24	24	24	24	24	24	24	24	24	24	24	24	24	24	24	24	24	24	24	24	24	24	24	24	24	24	24	24	24	24	24	24	24	24	24	24	24	24	24	24	24	24	24	24	24	24	24	24	24	24	24	24	24	24	24	24	24	24	24	24	24	24	24	24	24	24	24	24	24	24	24	24	24	24	24	24	24	24	24	24	24	24	24	24	24	24	24	24	24	24	24	24	24	24	24	24	24	24	24	24	24	24	24	24	24	24	24	24	24	24	24	24	24	24	24	24	24	24	24	24	24	24	24	24	24	24	24	24	24	24	24	24	24	24	24	24	24	24	24	24	24	24	24	24	24	24	24	24	24	24	24	24	24	24	24	24	24	24	24	24	24	24	24	24	24	24	24	24	24	24	24	24	24	24	24	24	24	24	24	24	24	24	24	24	24	24	24	24	24	24	24	24	24	24	24	24	24	24	24	24	24	24	24	24	24	24	24	24	24	24	24	24	24	24	24	24	24	24	24	24	24	24	24	24	24	24	24	24	24	24	24	24	24	24	24	24	24	24	24	24	24	24	24	24	24	24	24	24	24	24	24	24	24	24	24	24	24	24	24	24	24	24	24	24	24	24	24	24	24	24	24	24	24	24	24	24	24	24	24	24	24	24	24	24	24	24	24	24	24	24	24	24	24	24	24	24	24	24	24	24	24	24	24	24	24	24	24	24	24	24	24	24	24	24	24	24	24	24	24	24	24	24	24	24	24	24	24	24	24	24	24	24	24	24	24	24	24	24	24	24	24	24	24	24	24	24	24	24	24	24	24	24	24	24	24	24	24	24	24	24	24	24	24	24	24	24	24	24	24	24	24	24	24	24	24	24	24	24	24	24	24	24	24	24	24	24	24	24	24	24	24	24	24	24	24	24	24	24	24	24	24	24	24	24	24	24	24	24	24	24	24	24	24	24	24	24	24	24	24	24	24	24	24	24	24	24	24	24	24	24	24	24	24	24	24	24	24	24	24	24	24	24	24	24	24	24	24	24	24	24	24	24	24	24	24	24	24	24	24	24	24	24	24	24	24	24	24	24	24	24	24	24	24	24	24	24	24	24	24	24	24	24	24	24	24	24	24	24	24	24	24	24	24	24	24	24	24	24	24	24	24	24	24	24	24	24	24	24	24	24	24	24	24	24	24	24	24	24	24	24	24	24	24	24	24	24	24	24	24	24	24	24	24	24	24	24	24	24	24	24	24	24	24	24	24	24	24	24	24	24	24	24	24	24	24	24	24	24	24	24	24	24	24	24	24	24	24	24	24	24	24	24	24	24	24	24	24	24	24	24	24	24	24	24	24	24	24	24	24	24	24	24	24	24	24	24	24	24	24	24	24	24	24	24	24	24	24	24	24	24	24	24	24	24	24	24	24	24	24	24	24	24	24	24	24	24	24	24	24	24	24	24	24	24	24	24	24	24	24	24	24	24	24	24	24	24	24	24	24	24	24	24	24	24	24	24	24	24	24	24	24	24	24	24	24	24	24	24	24	24	24	24	24	24	24	24	24	24	24	24	24	24	24	24	24	24	24	24	24	24	24	24	24	24	24	24	24	24	24	24	24	24	24	24	24	24	24	24	24	24	24	24	24	24	24	24	24	24	24	24	24	24	24	24	24	24	24	24	24	24	24	24	24	24	24	24	24	24	24	24	24	24	24	24	24	24	24	24	24	24	24	24	24	24	24	24	24	24	24	24	24	24	24	24	24	24	24	24	24	24	24	24	24	24	24	24	24	24	24	24	24	24	24	24	24	24	24	24	24	24	24	24	24	24	24	24	24	24	24	24	24	24	24	24	24	24	24	24	24	24	24	24	24	24	24	24	24	24	24	24	24	24	24	24	24	24	24	24	24	24	24	24	24	24	24	24	24	24	24	24	24	24	24	24	24	24	24	24	24	24	24	24	24	24	24	24	24	24	24	24	24	24	24	24	24	24	24	24	24	24	24	24	24	24	24	24	24	24	24	24	24	24	24	24	24	24	24	24	24	24	24	24	24	24	24	24	24	24	24	24	24	24	24	24	24	24	24	24	24	24	24	24	24	24	24	24	24	24	24	24	24	24	24	24	24	24	24	24	24	24	24	24	24	24	24	24	24	24	24	24	24	24	24	24	24	24	24	24	24	24	24	24	24	24	24	24



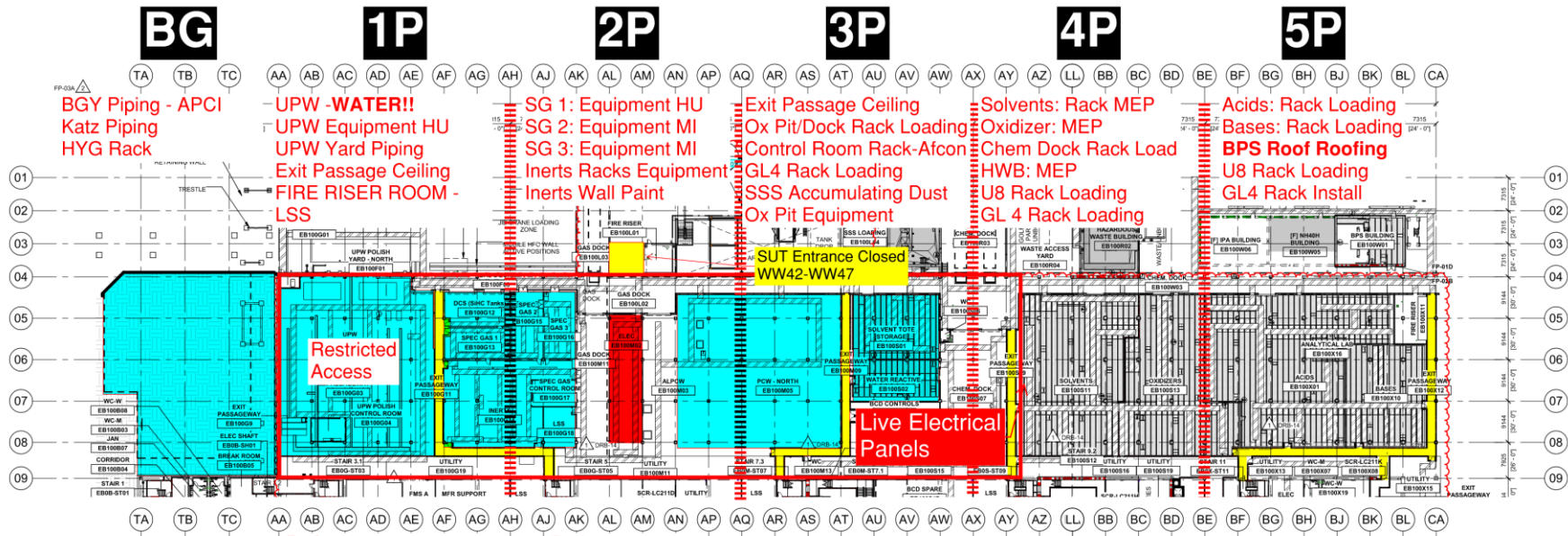
Walk path



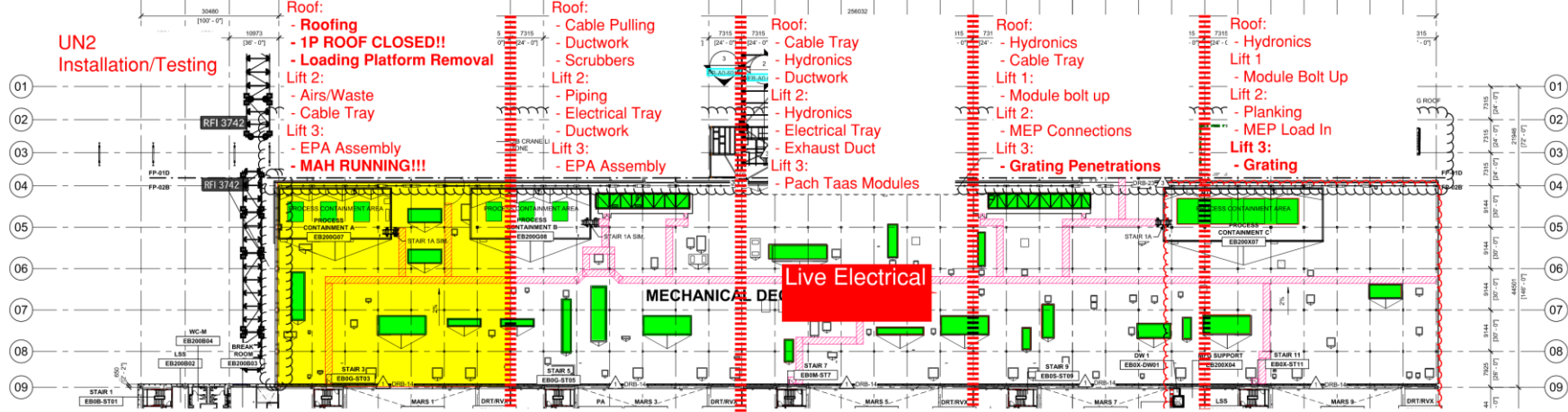


PSSS.1

Utility Level 1YA



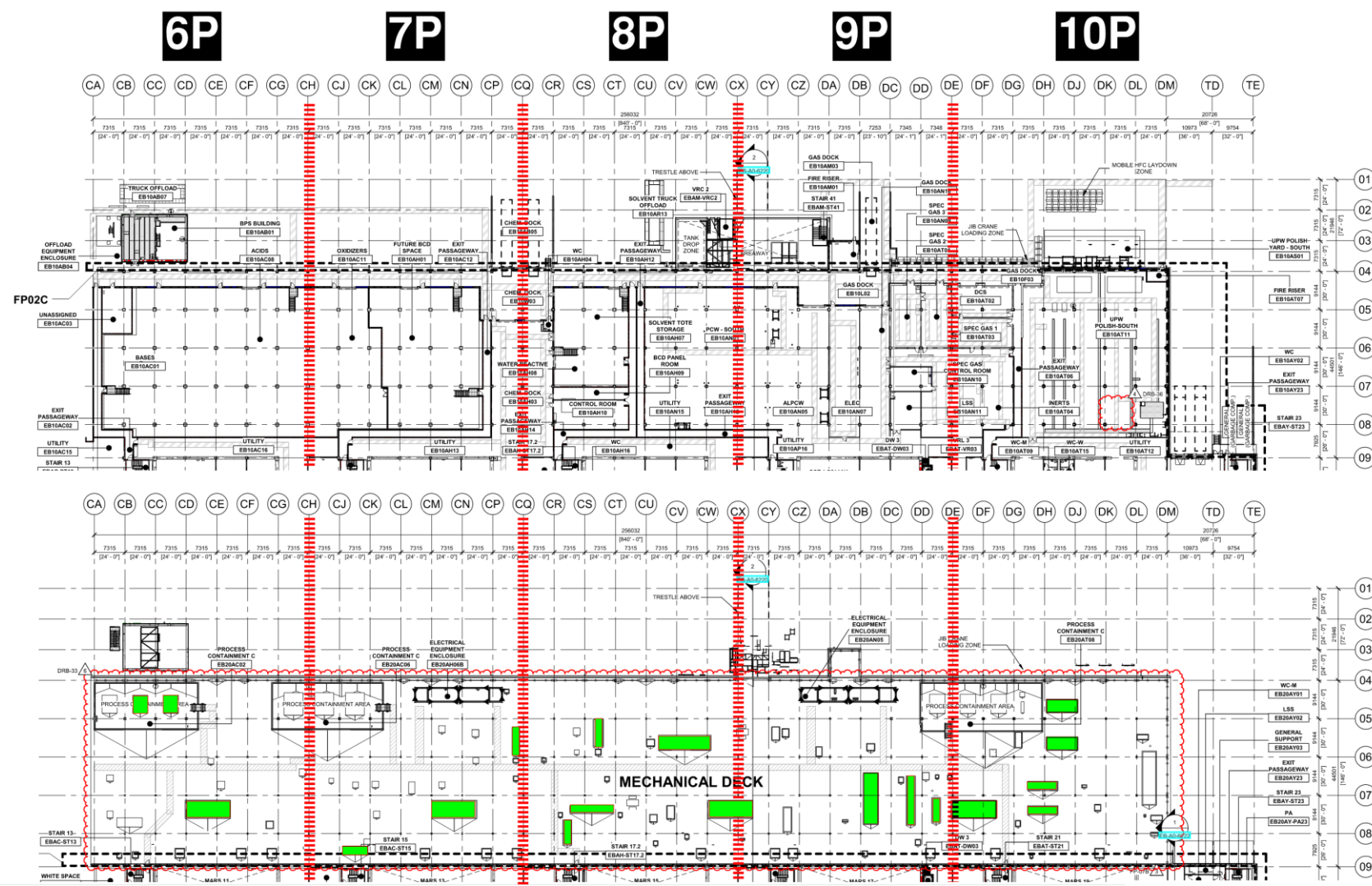
PSSS Roof 2SA



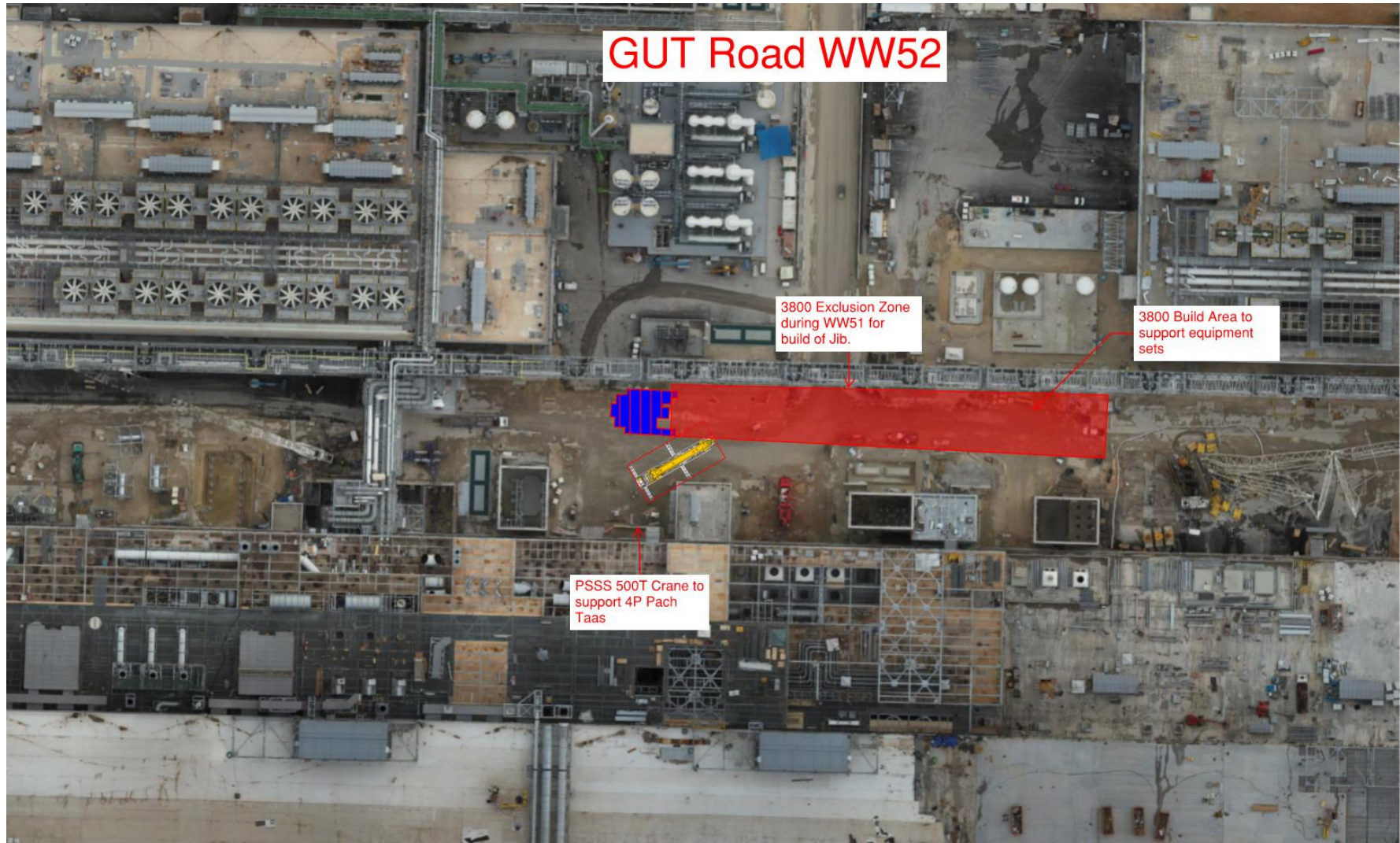
PSSS.2

Utility Level
1YA

PSSS Roof
2SA



3800
Build
22nd_
26th



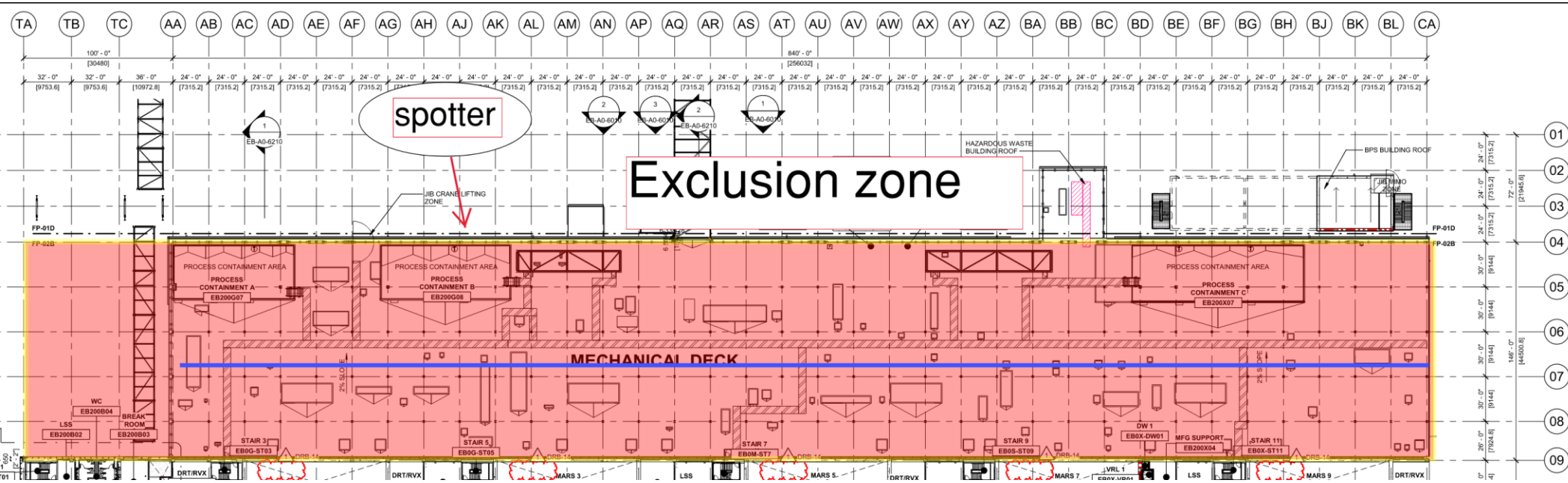
The floor plan is divided into sections labeled AA through BD at the top. A large red-shaded area covers the central and right portions of the facility, indicating a specific zone of interest. Key rooms and areas include:

- UPW Polish North:** EB100F01, EB100G02, EB100G03, EB100G04.
- PA Lobby:** EB100G03, EB100G05, EB100G10, EB100G19, EB100G20, EB100G21, EB100G22, EB100G23, EB100G24, EB100G25, EB100G26, EB100G27, EB100G28, EB100G29, EB100G30, EB100G31, EB100G32, EB100G33, EB100G34, EB100G35, EB100G36, EB100G37, EB100G38, EB100G39, EB100G40, EB100G41, EB100G42, EB100G43, EB100G44, EB100G45, EB100G46, EB100G47, EB100G48, EB100G49, EB100G50, EB100G51, EB100G52, EB100G53, EB100G54, EB100G55, EB100G56, EB100G57, EB100G58, EB100G59, EB100G60, EB100G61, EB100G62, EB100G63, EB100G64, EB100G65, EB100G66, EB100G67, EB100G68, EB100G69, EB100G70, EB100G71, EB100G72, EB100G73, EB100G74, EB100G75, EB100G76, EB100G77, EB100G78, EB100G79, EB100G80, EB100G81, EB100G82, EB100G83, EB100G84, EB100G85, EB100G86, EB100G87, EB100G88, EB100G89, EB100G90, EB100G91, EB100G92, EB100G93, EB100G94, EB100G95, EB100G96, EB100G97, EB100G98, EB100G99, EB100G100.
- Gas Dock:** EB100L01, EB100L02, EB100L03, EB100L04, EB100L05, EB100L06, EB100L07, EB100L08, EB100L09, EB100L10, EB100L11, EB100L12, EB100L13, EB100L14, EB100L15, EB100L16, EB100L17, EB100L18, EB100L19, EB100L20, EB100L21, EB100L22, EB100L23, EB100L24, EB100L25, EB100L26, EB100L27, EB100L28, EB100L29, EB100L30, EB100L31, EB100L32, EB100L33, EB100L34, EB100L35, EB100L36, EB100L37, EB100L38, EB100L39, EB100L40, EB100L41, EB100L42, EB100L43, EB100L44, EB100L45, EB100L46, EB100L47, EB100L48, EB100L49, EB100L50, EB100L51, EB100L52, EB100L53, EB100L54, EB100L55, EB100L56, EB100L57, EB100L58, EB100L59, EB100L60, EB100L61, EB100L62, EB100L63, EB100L64, EB100L65, EB100L66, EB100L67, EB100L68, EB100L69, EB100L70, EB100L71, EB100L72, EB100L73, EB100L74, EB100L75, EB100L76, EB100L77, EB100L78, EB100L79, EB100L80, EB100L81, EB100L82, EB100L83, EB100L84, EB100L85, EB100L86, EB100L87, EB100L88, EB100L89, EB100L90, EB100L91, EB100L92, EB100L93, EB100L94, EB100L95, EB100L96, EB100L97, EB100L98, EB100L99, EB100L100.
- Spec Gas:** EB100G12, EB100G13, EB100G14, EB100G15, EB100G16, EB100G17, EB100G18, EB100G19, EB100G20, EB100G21, EB100G22, EB100G23, EB100G24, EB100G25, EB100G26, EB100G27, EB100G28, EB100G29, EB100G30, EB100G31, EB100G32, EB100G33, EB100G34, EB100G35, EB100G36, EB100G37, EB100G38, EB100G39, EB100G40, EB100G41, EB100G42, EB100G43, EB100G44, EB100G45, EB100G46, EB100G47, EB100G48, EB100G49, EB100G50, EB100G51, EB100G52, EB100G53, EB100G54, EB100G55, EB100G56, EB100G57, EB100G58, EB100G59, EB100G60, EB100G61, EB100G62, EB100G63, EB100G64, EB100G65, EB100G66, EB100G67, EB100G68, EB100G69, EB100G70, EB100G71, EB100G72, EB100G73, EB100G74, EB100G75, EB100G76, EB100G77, EB100G78, EB100G79, EB100G80, EB100G81, EB100G82, EB100G83, EB100G84, EB100G85, EB100G86, EB100G87, EB100G88, EB100G89, EB100G90, EB100G91, EB100G92, EB100G93, EB100G94, EB100G95, EB100G96, EB100G97, EB100G98, EB100G99, EB100G100.
- SSS Yard:** EB100R01, EB100R02, EB100R03, EB100R04, EB100R05, EB100R06, EB100R07, EB100R08, EB100R09, EB100R10, EB100R11, EB100R12, EB100R13, EB100R14, EB100R15, EB100R16, EB100R17, EB100R18, EB100R19, EB100R20, EB100R21, EB100R22, EB100R23, EB100R24, EB100R25, EB100R26, EB100R27, EB100R28, EB100R29, EB100R30, EB100R31, EB100R32, EB100R33, EB100R34, EB100R35, EB100R36, EB100R37, EB100R38, EB100R39, EB100R40, EB100R41, EB100R42, EB100R43, EB100R44, EB100R45, EB100R46, EB100R47, EB100R48, EB100R49, EB100R50, EB100R51, EB100R52, EB100R53, EB100R54, EB100R55, EB100R56, EB100R57, EB100R58, EB100R59, EB100R60, EB100R61, EB100R62, EB100R63, EB100R64, EB100R65, EB100R66, EB100R67, EB100R68, EB100R69, EB100R70, EB100R71, EB100R72, EB100R73, EB100R74, EB100R75, EB100R76, EB100R77, EB100R78, EB100R79, EB100R80, EB100R81, EB100R82, EB100R83, EB100R84, EB100R85, EB100R86, EB100R87, EB100R88, EB100R89, EB100R90, EB100R91, EB100R92, EB100R93, EB100R94, EB100R95, EB100R96, EB100R97, EB100R98, EB100R99, EB100R100.
- Control Rooms:** EB100S01, EB100S02, EB100S03, EB100S04, EB100S05, EB100S06, EB100S07, EB100S08, EB100S09, EB100S10, EB100S11, EB100S12, EB100S13, EB100S14, EB100S15, EB100S16, EB100S17, EB100S18, EB100S19, EB100S20, EB100S21, EB100S22, EB100S23, EB100S24, EB100S25, EB100S26, EB100S27, EB100S28, EB100S29, EB100S30, EB100S31, EB100S32, EB100S33, EB100S34, EB100S35, EB100S36, EB100S37, EB100S38, EB100S39, EB100S40, EB100S41, EB100S42, EB100S43, EB100S44, EB100S45, EB100S46, EB100S47, EB100S48, EB100S49, EB100S50, EB100S51, EB100S52, EB100S53, EB100S54, EB100S55, EB100S56, EB100S57, EB100S58, EB100S59, EB100S60, EB100S61, EB100S62, EB100S63, EB100S64, EB100S65, EB100S66, EB100S67, EB100S68, EB100S69, EB100S70, EB100S71, EB100S72, EB100S73, EB100S74, EB100S75, EB100S76, EB100S77, EB100S78, EB100S79, EB100S80, EB100S81, EB100S82, EB100S83, EB100S84, EB100S85, EB100S86, EB100S87, EB100S88, EB100S89, EB100S90, EB100S91, EB100S92, EB100S93, EB100S94, EB100S95, EB100S96, EB100S97, EB100S98, EB100S99, EB100S100.
- Other Rooms:** EB100M01, EB100M02, EB100M03, EB100

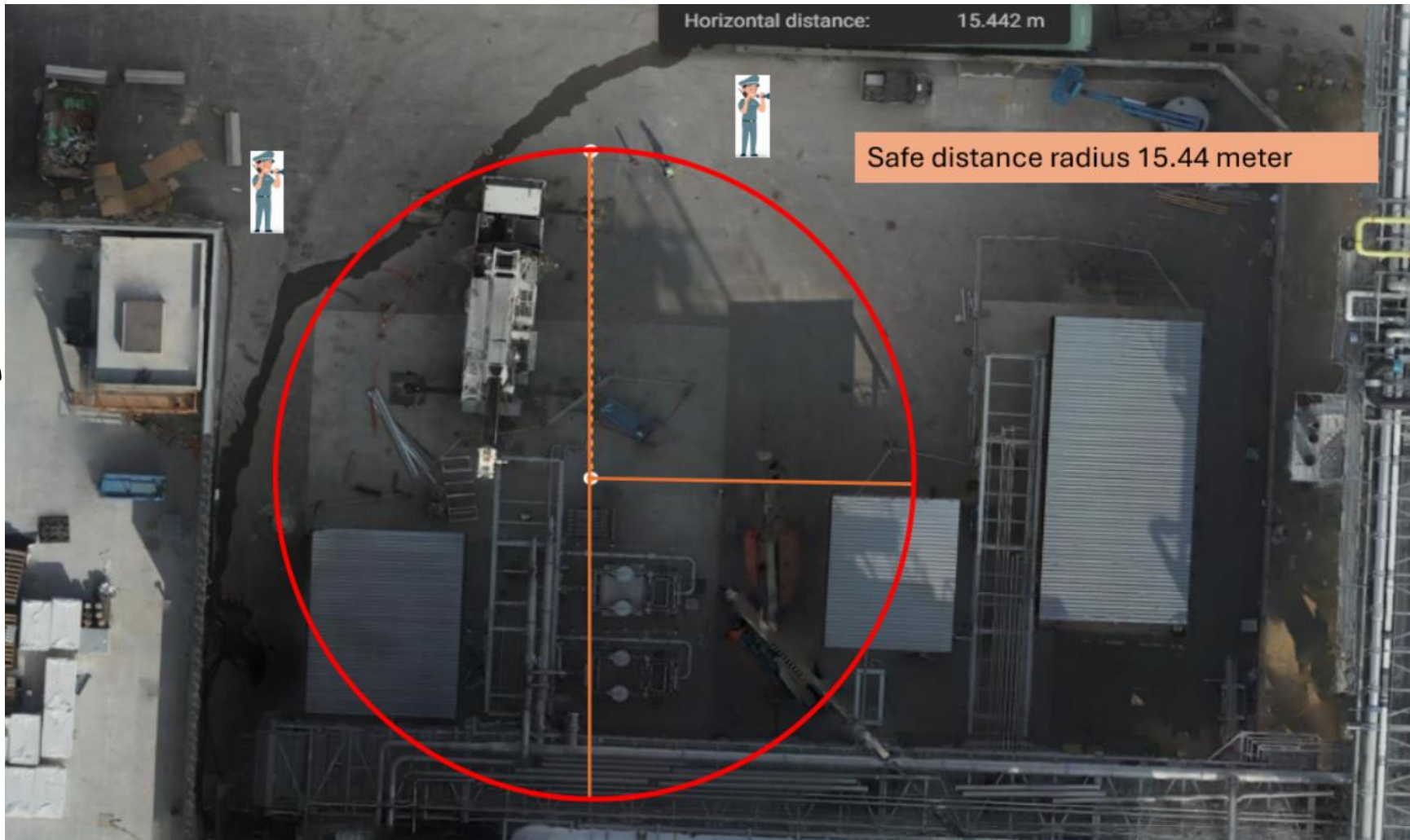
IA/PA Pressure Test

23/12

17:00



UN2
BGY
Pressure
Test
23/12
@11:00
– 17:00





WJG 01J, 02J LIFT 2 & 3





WJG 03J, 04J, 05J LIFT 2 & 3



1J

EB100K02 EB100K03
FIRE RISER EB100K04
Stair 4 Access Closed
DRB-14
RAMPS
JIB CRANE LADING ZONE

2J

FIRE RISER EB100Q03
WC EB100Q04
STAIR EB100V-ST
FIRE RISER EB100V02
JANITORIAL NCU/CU EB100Q08
FIRE RISER EB100V07
FIRE RISER EB100V01

3J

STAIR EB100V-ST
CHEM STAGING EB100V05
DW 2 EB100V-DW02
FIRE RISER EB100V09
CONTRACTOR CAGE 28 EB100V10

4J

PA LOBBY EB10AA01
WC-W EB10AA03
WC-M EB10AA09
FIRE RISER EB10AA05
STAIR EBAA-ST
DRB-14

5J

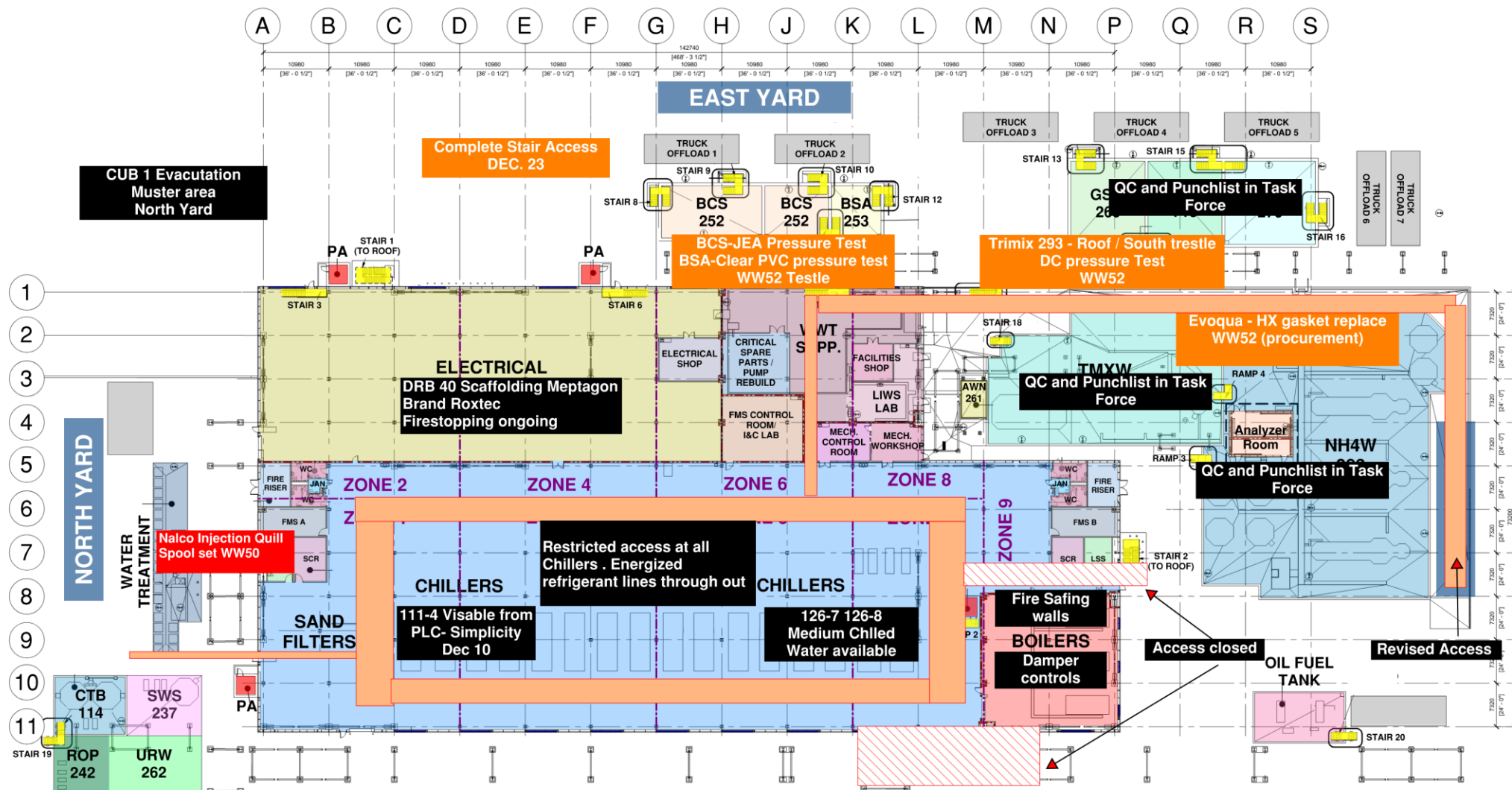
EB10AA07
EB10AA04
STAIR EBAA-ST
DRB-14

Callout Boxes:

- Meptagon - All Over**
Pach Taas - UPN 138
Afcon Lighting / Electrical Cable Pulling
- Meptagon - All Over**
- Afcon - Cable Pulling**
PH2.0 - Pump Connections
- Lesico Pipe + Pipe Support**
Pach Taas Bolting
TC4 - Build Back
- Pach Taas - Bolting**
Afcon - Cable Tray



CUB 1



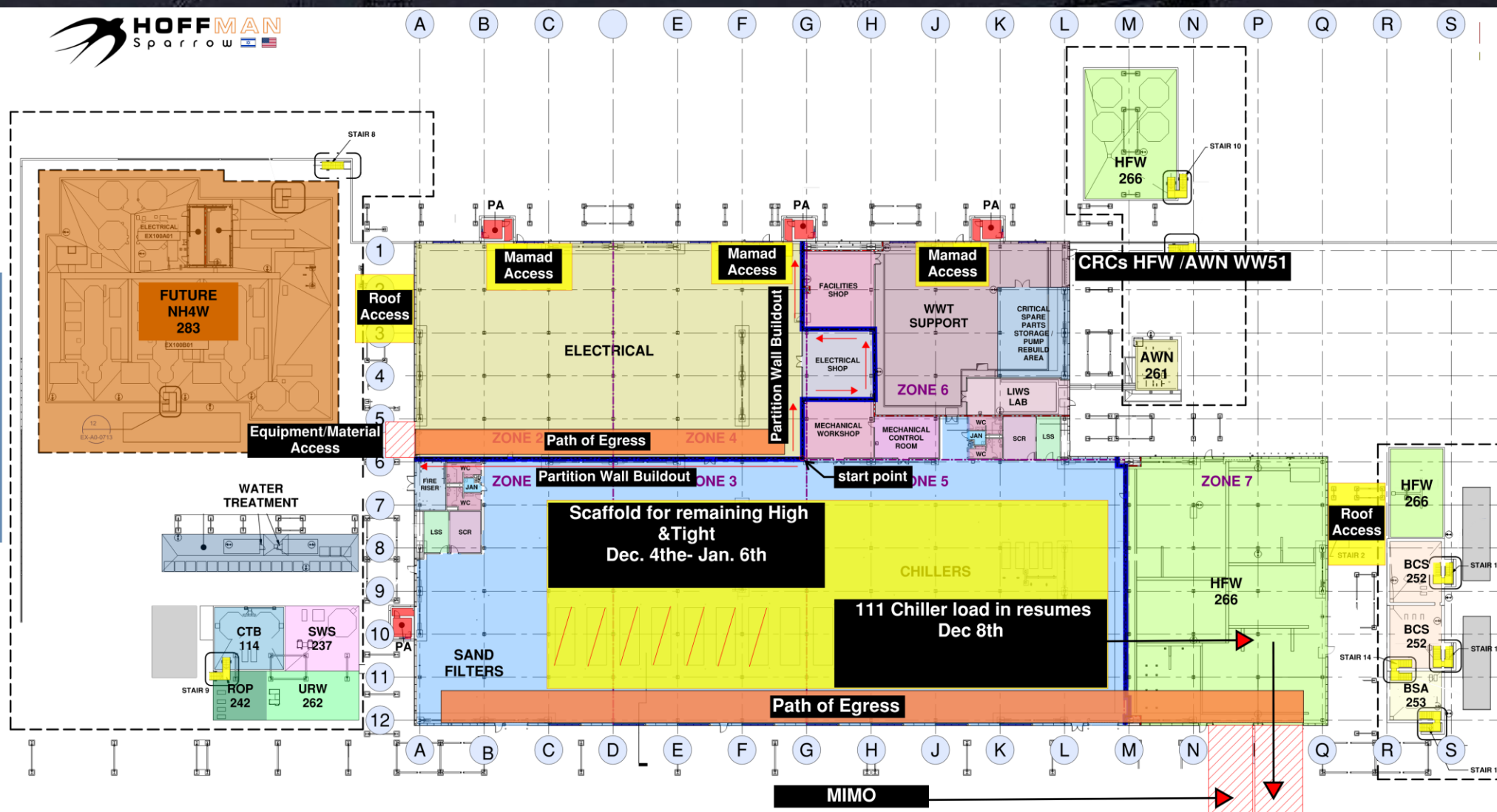
CUB 1 – EXTERIOR/ROOF



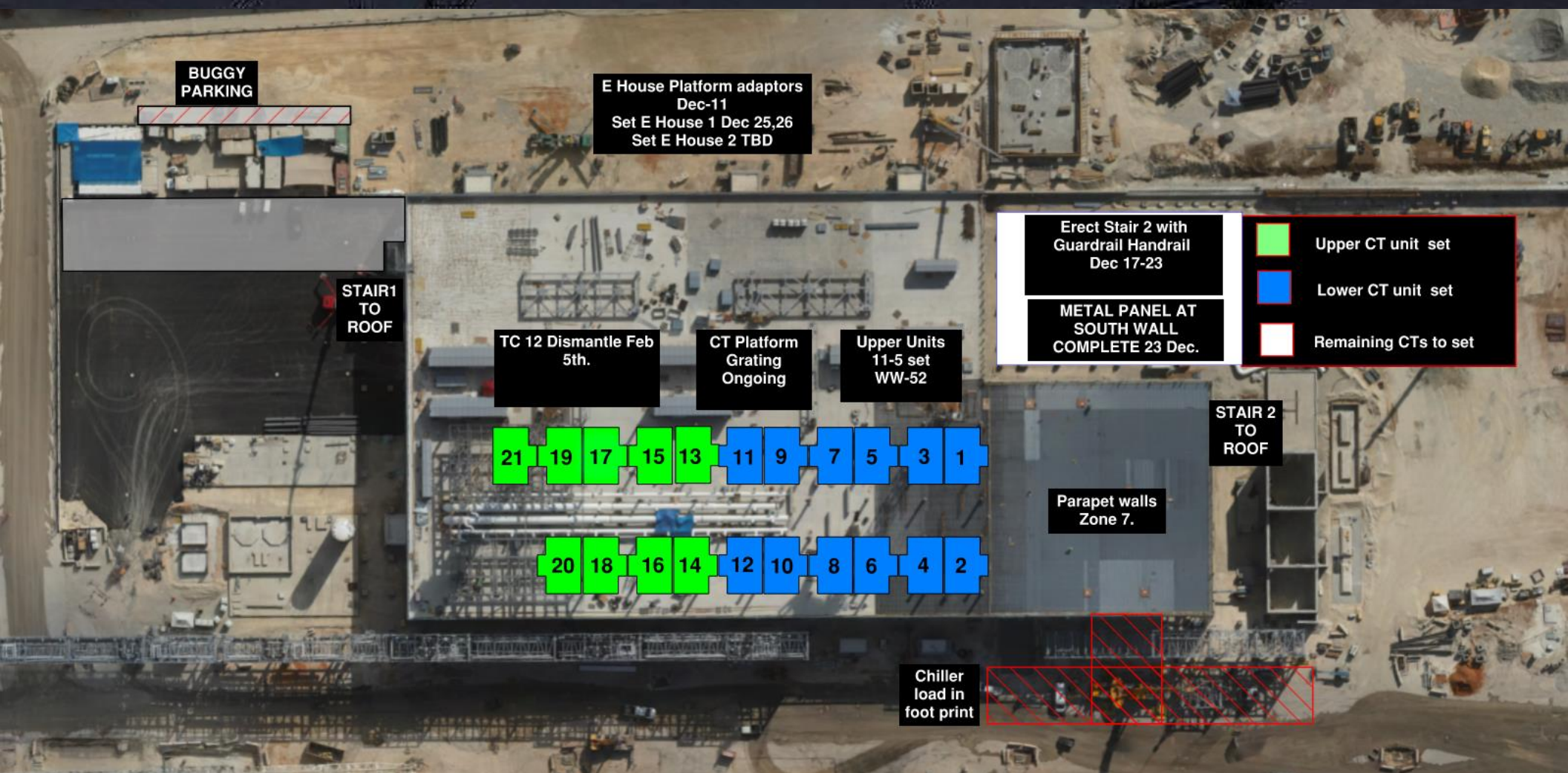
CUB 2- Load in and H&T



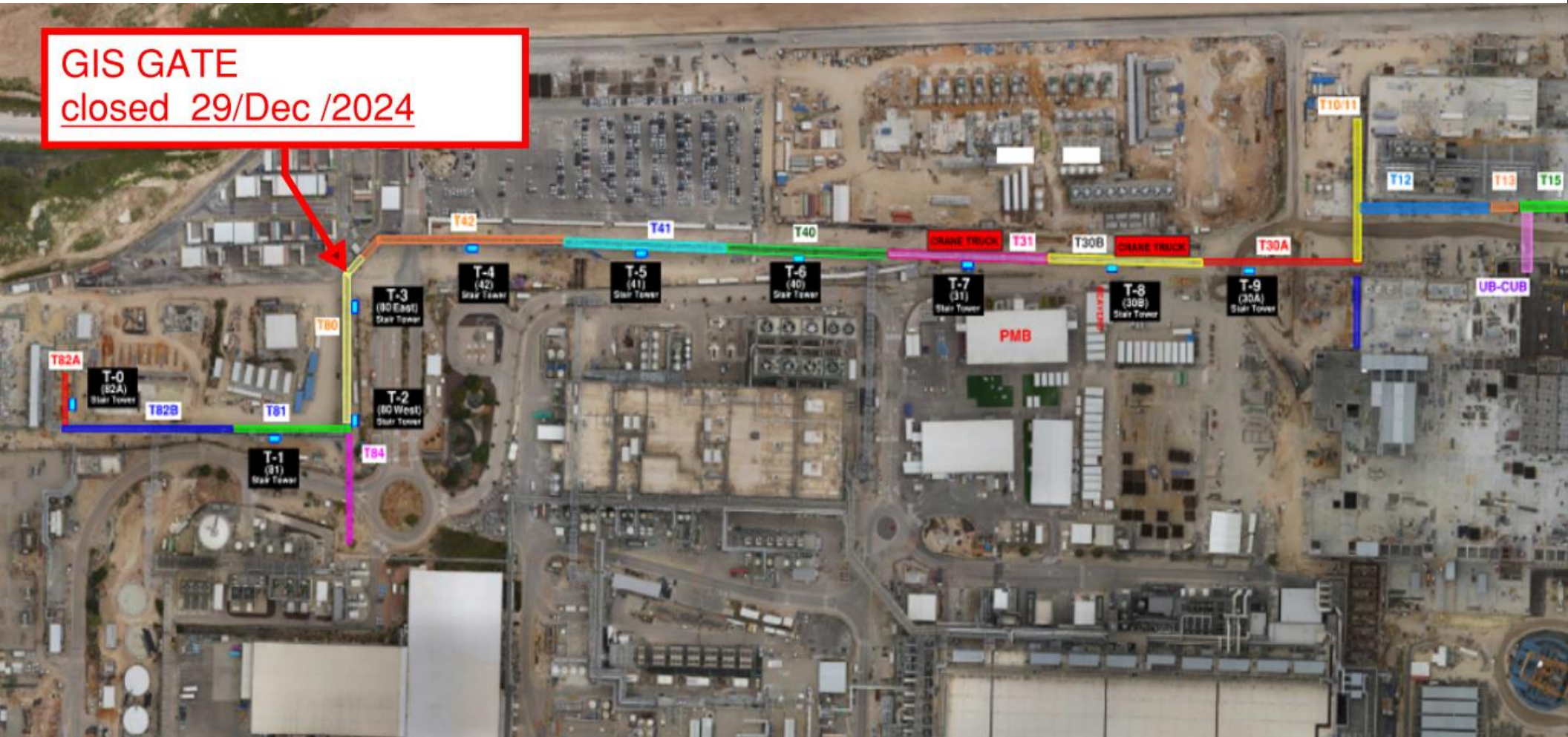
NORTH YARD



CUB 2 – EXTERIOR/ROOF



GIS GATE
closed 29/Dec /2024



SUT

UB CUB - STAIRCASE DISMANTLING

24/12/2024

CU

BGC - NDT

Starting -Monday December 23rd night at 19:00
Finish Tuesday December 24th at 05:00am.

Starting -Tuesday December 24th at 19:00
Finish Wednesday December 25th at 05:00am

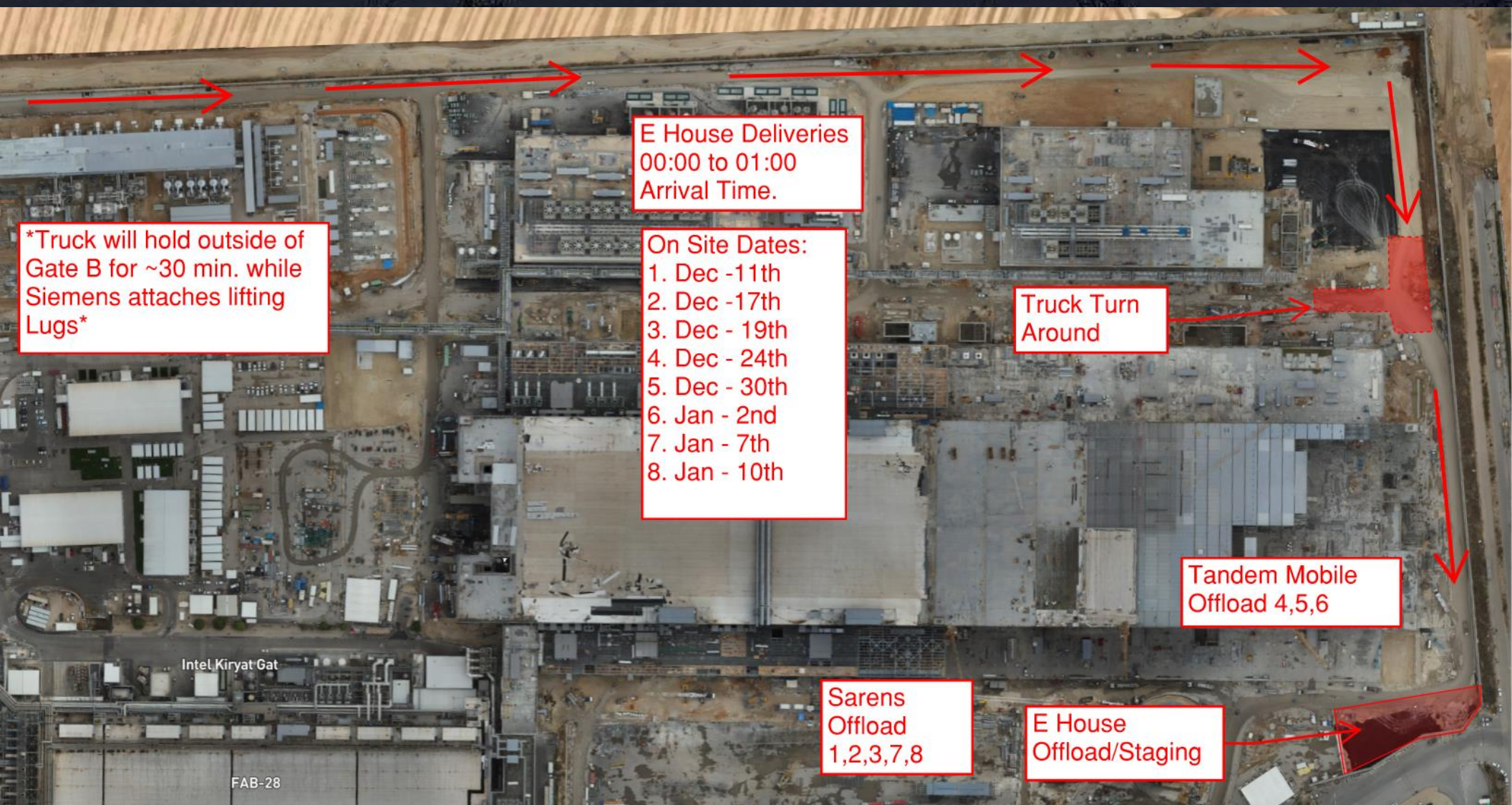
Starting -Wednesday December 25th at 19:00
Finish Thursday December 26th at 05:00am

No impact on PMB
entrance\Exit

Safety spotter

Safety spotter

Safety spotter



Truck will hold outside of Gate B for ~30 min. while Siemens attaches lifting Lugs

E House Deliveries
00:00 to 01:00
Arrival Time.

On Site Dates:
1. Dec -11th
2. Dec -17th
3. Dec - 19th
4. Dec - 24th
5. Dec - 30th
6. Jan - 2nd
7. Jan - 7th
8. Jan - 10th

Truck Turn
Around

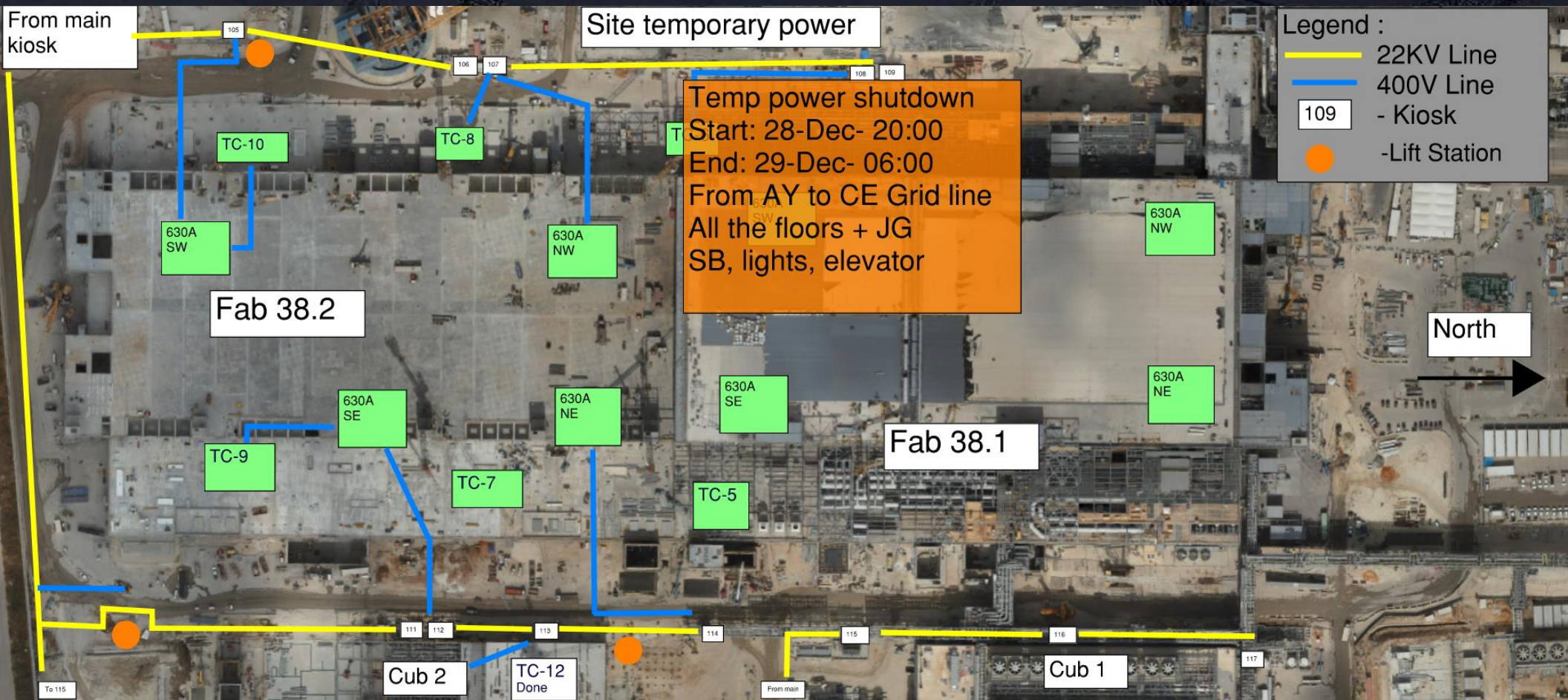
Tandem Mobile
Offload 4,5,6

Sarens
Offload
1,2,3,7,8

E House
Offload/Staging

Intel Kiryat Gat

FAB-28





HOFFMAN CONSTRUCTION COMPANY



Daily Coordination Meeting

Site Logistics
North

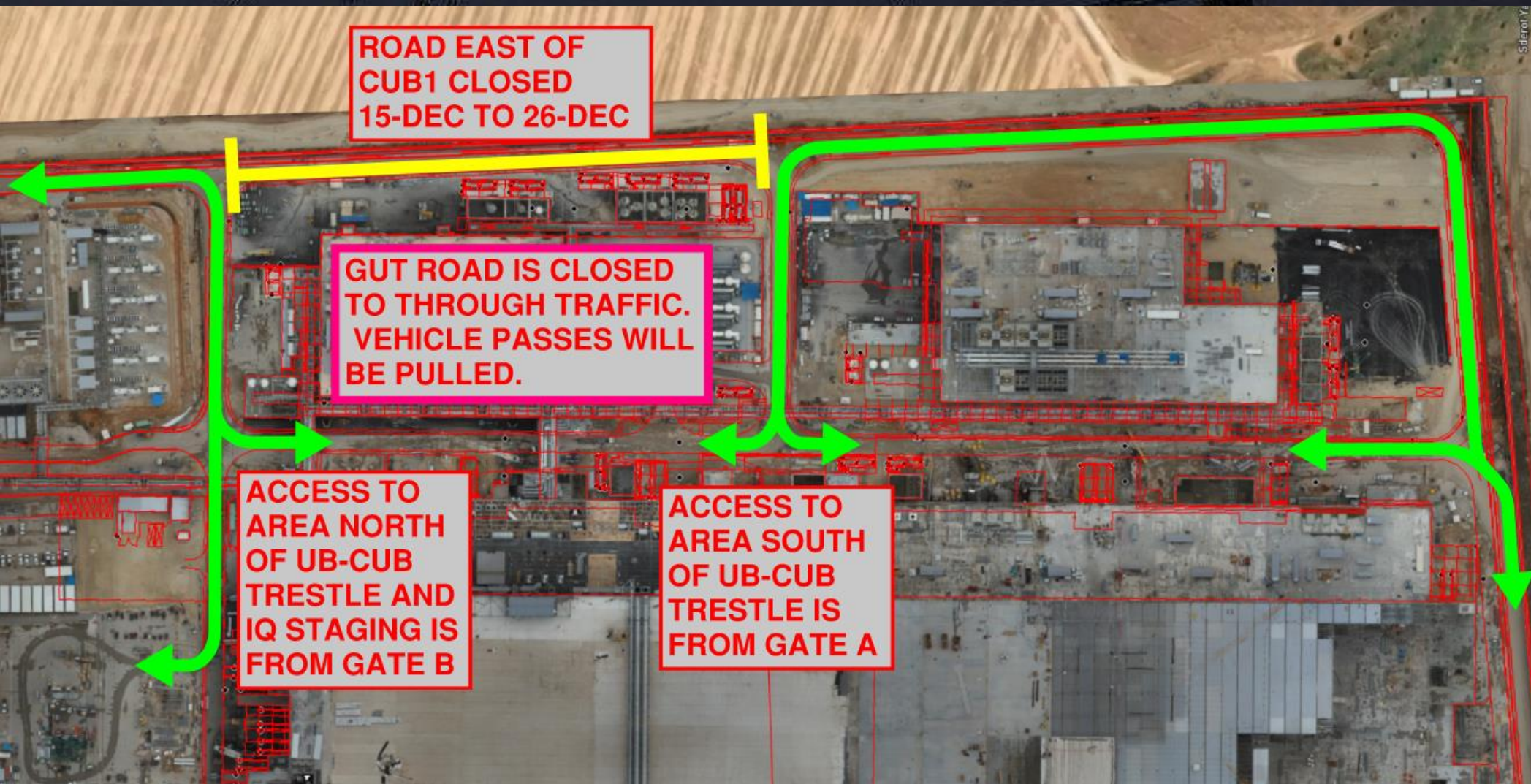




Daily Coordination Meeting

Site Logistics

East CUB1 Road Closure



Daily Coordination Meeting

Site Logistics

South





LEARN FROM EVERYTHING

PROJECTEAGLE
2024



ALL INJURIES ARE PREVENTABLE | PEOPLE ARE THE SOLUTION | SUCCESS IS THE PRESENCE OF SAFETY

DATE/TIME OF INCIDENT: 12/12/2024 09:10 AM

LOCATION UTILITY 52.1 AK-18

:

WHAT HAPPENED?

An arc flash occurred while an employee was concluding a voltage check on a recently energized panel. When transitioning from B-N to C-N, the tip of the meter lead contacted both B & C phases, resulting in the arc flash.

CURRENT SITUATION/CONTAINEMENT?

Panel was repaired, re-tested, and re-energized without any further issues.

ROOT CAUSE

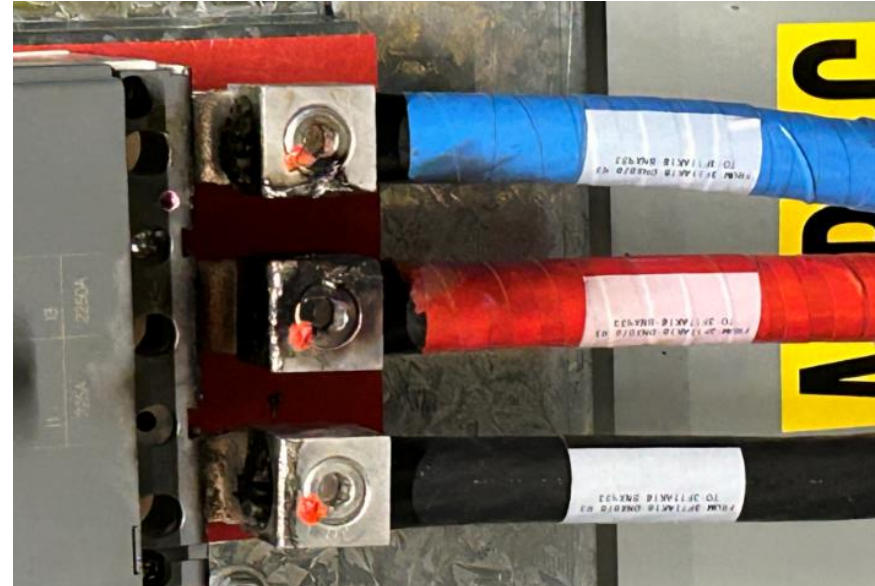
Personnel / Human Error

WHAT CAN THE PROJECT LEARN FROM THIS INCIDENT?

The use of protective rubber boots for fluke voltage meter leads will be implemented.

WHAT CORRECTIVE ACTIONS ARE BEING TAKEN?

- Protective rubber boots will be installed on all contractor's fluke voltage meter leads.
- Update contractor's site wide policy for fluke voltage use to incorporate the protective rubber boots.
- Electrical contractor to conduct a stand down for crews to review incident and updated corrective actions.



Daily Coordination Meeting



14:00 Sign In