

# Daily Coordination Meeting



14:00 Sign In



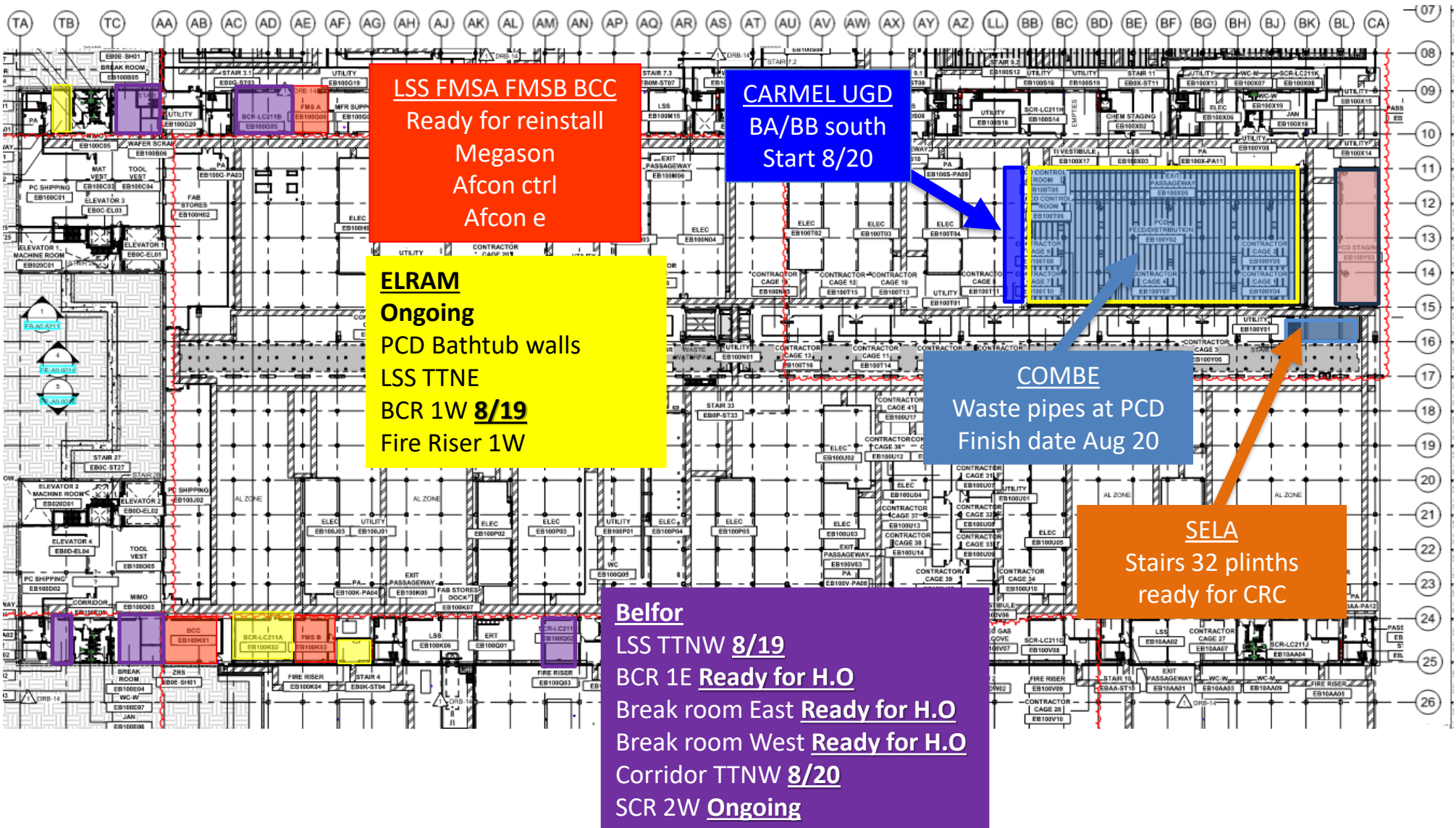
# Daily Coordination Meeting

## General Topics:

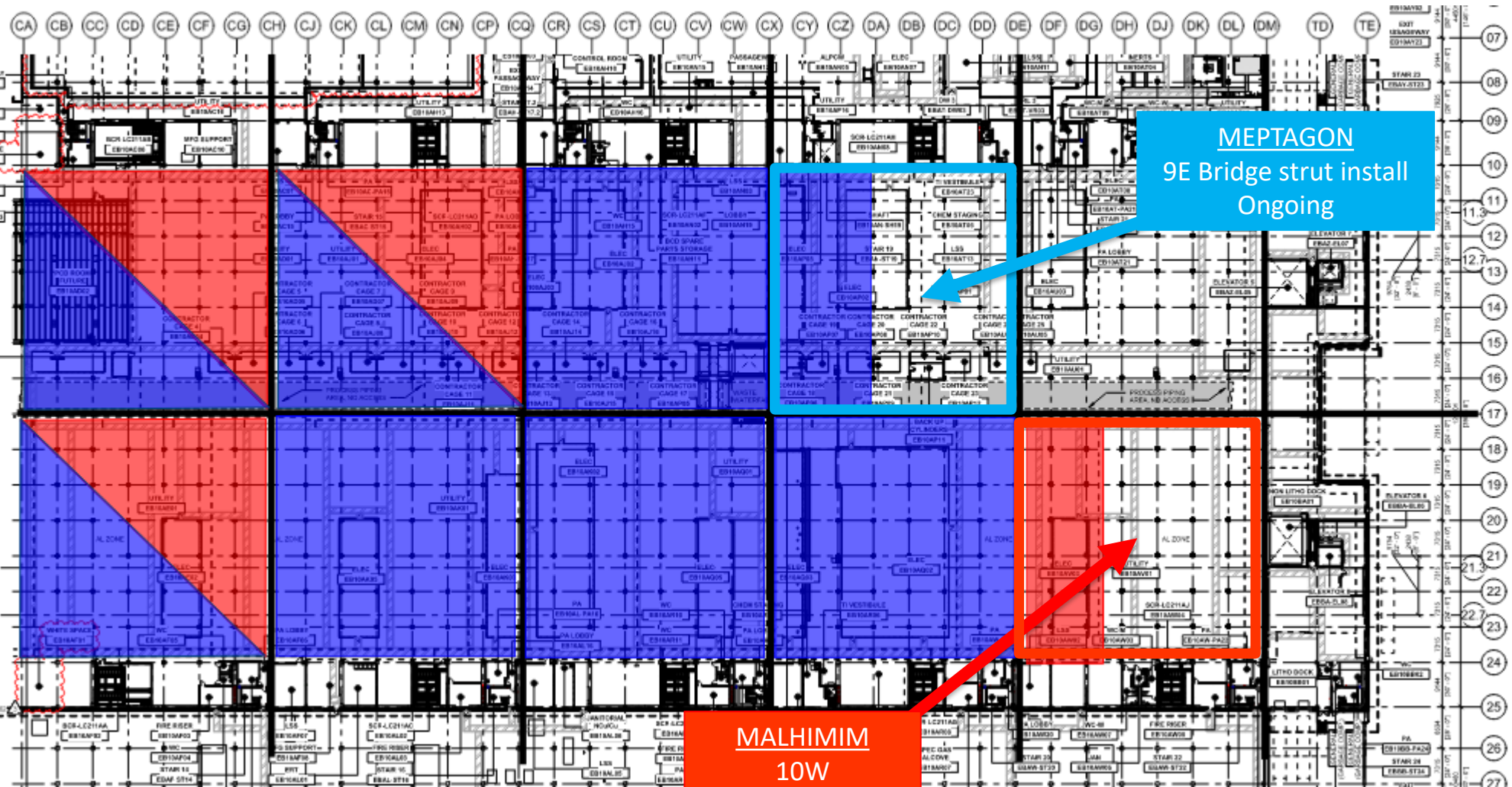
- SLT walk today
  - Good participation from subs
  - 14:00 topics - not getting into field
  - MSM topics - not paying attention



# UTILITY LEVEL MOD1



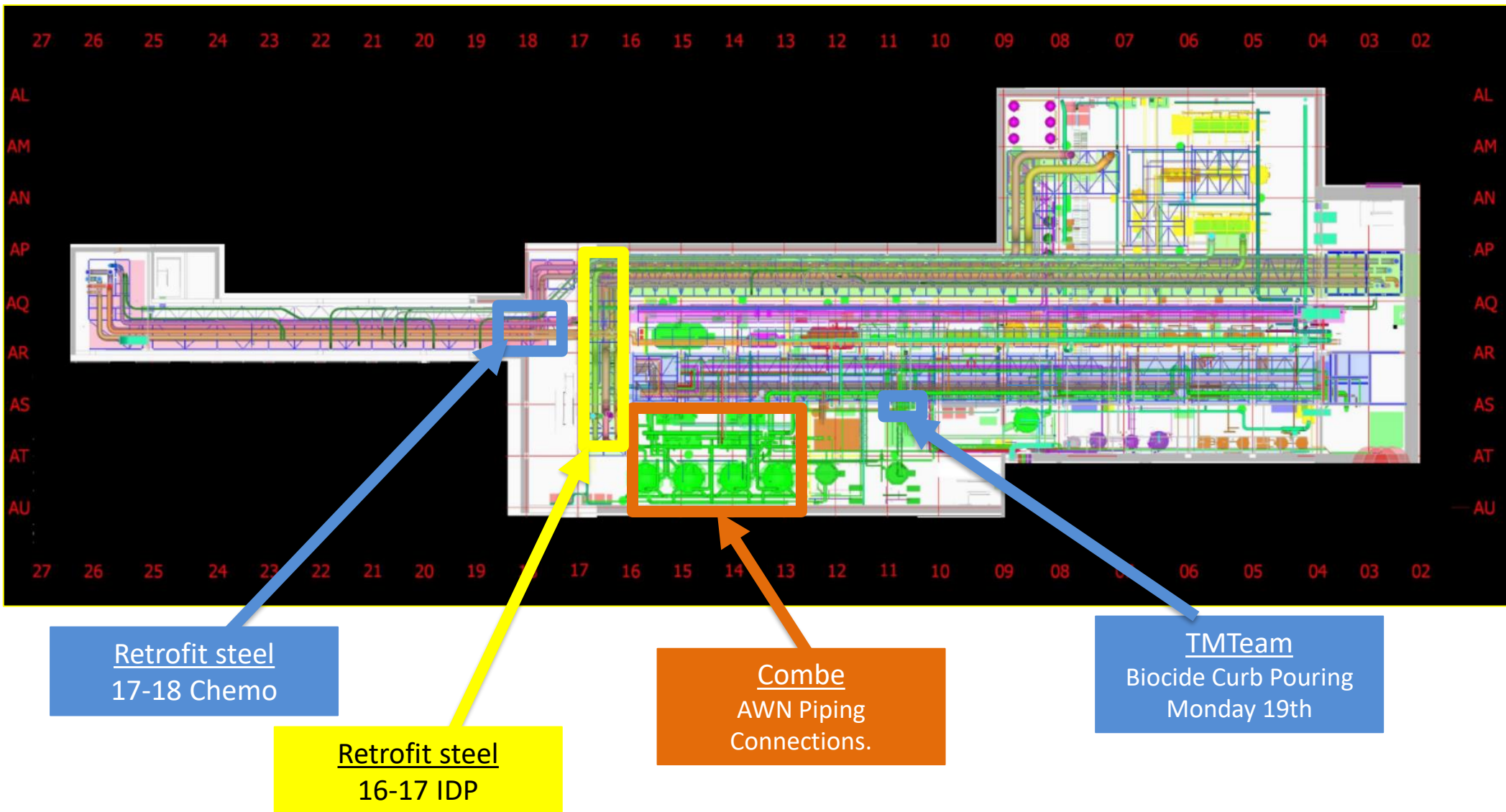
# UTILITY LEVEL MOD2





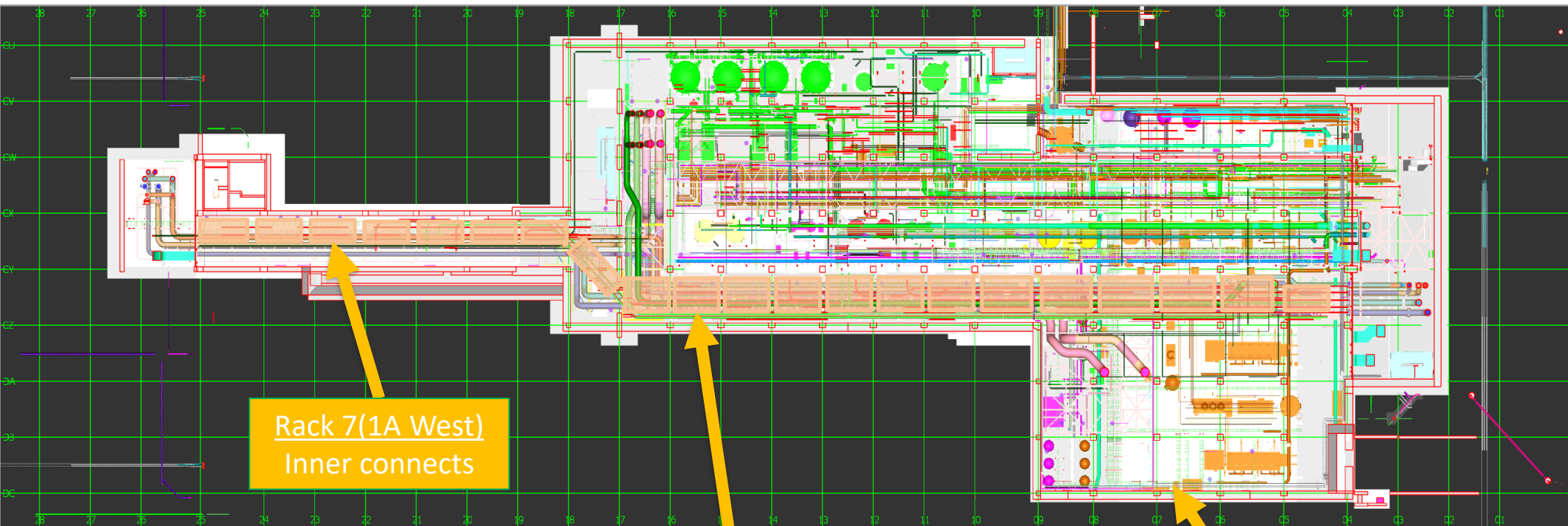


## SUT 38.1 LEVEL





## SUT 38.2 LEVEL



Rack 7(1A West)  
Inner connects

CRW  
H&T  
Need to be installed

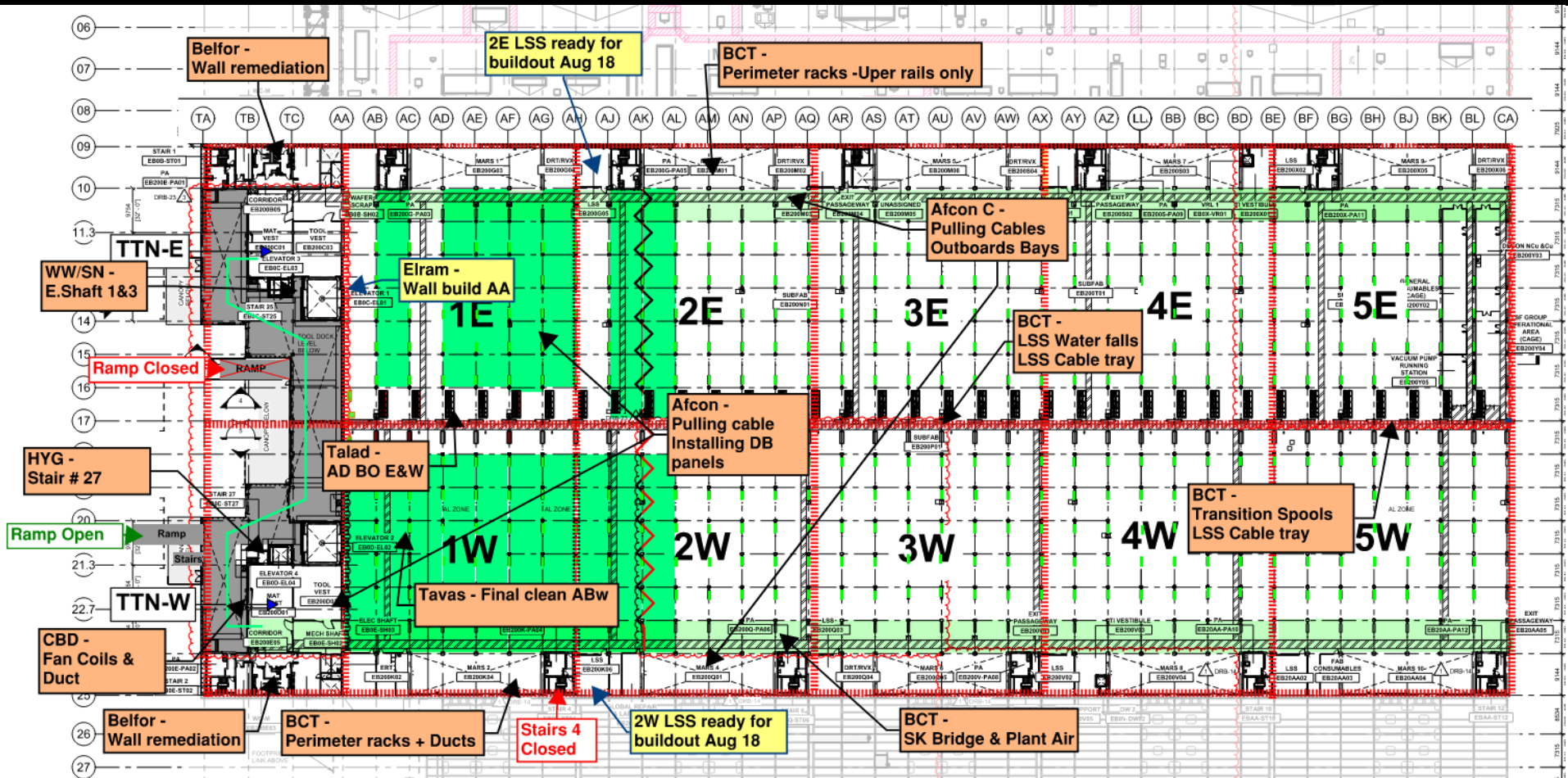
1A Rack  
Inner connects

8 Rack  
Lifting

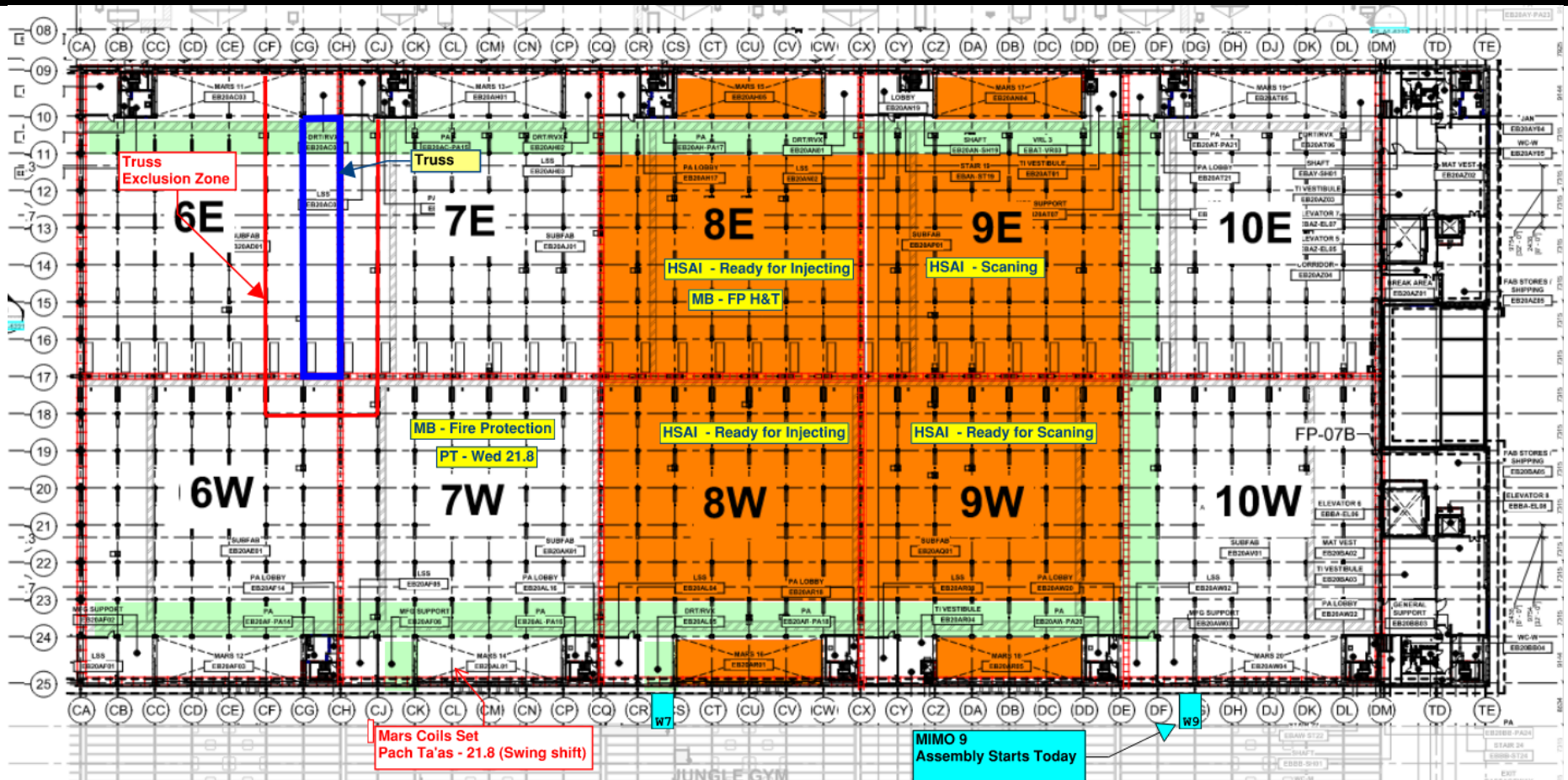
Vesda  
H&T  
Not actively installing



# SUBFAB BUILDOUT MOD 1

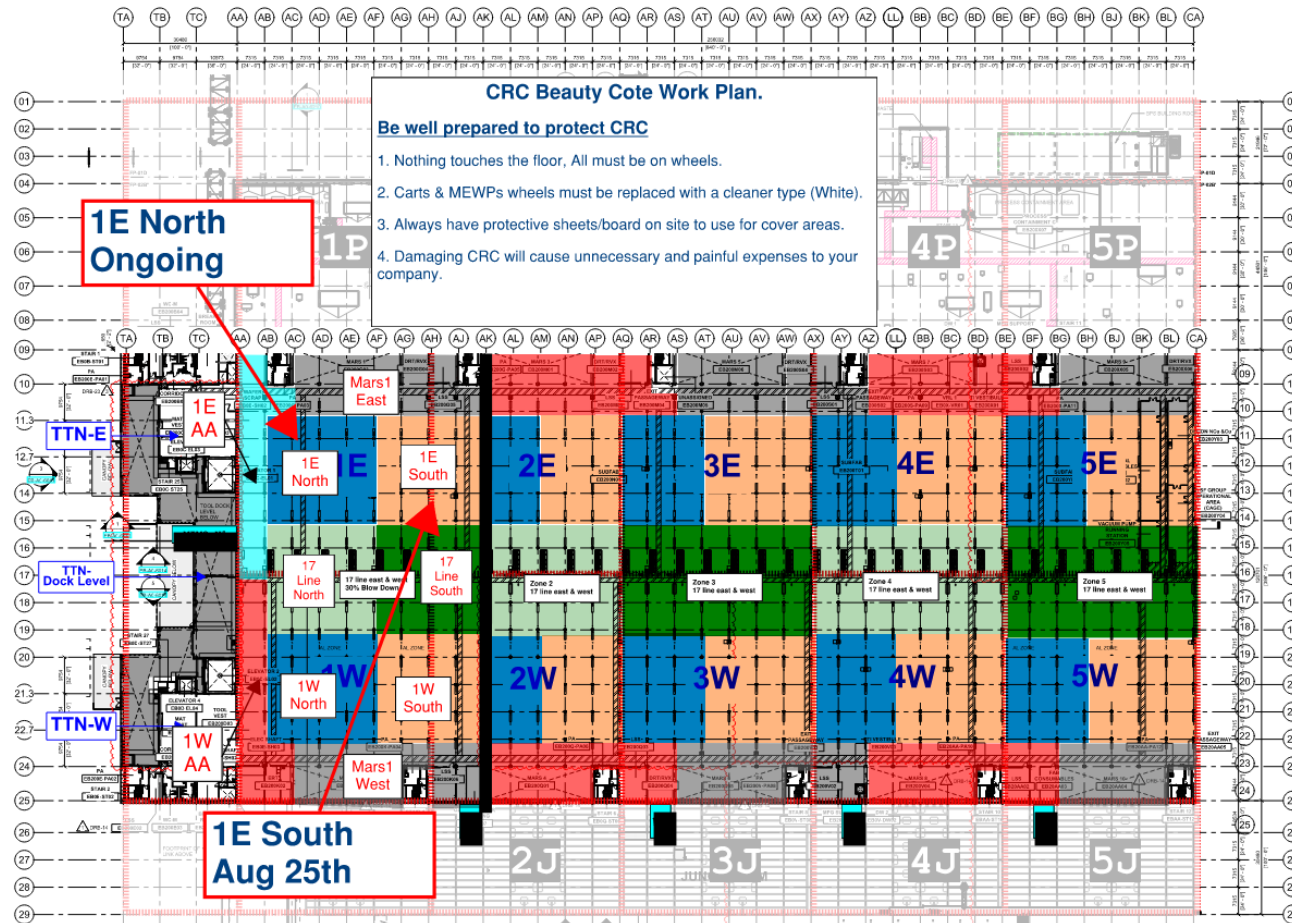


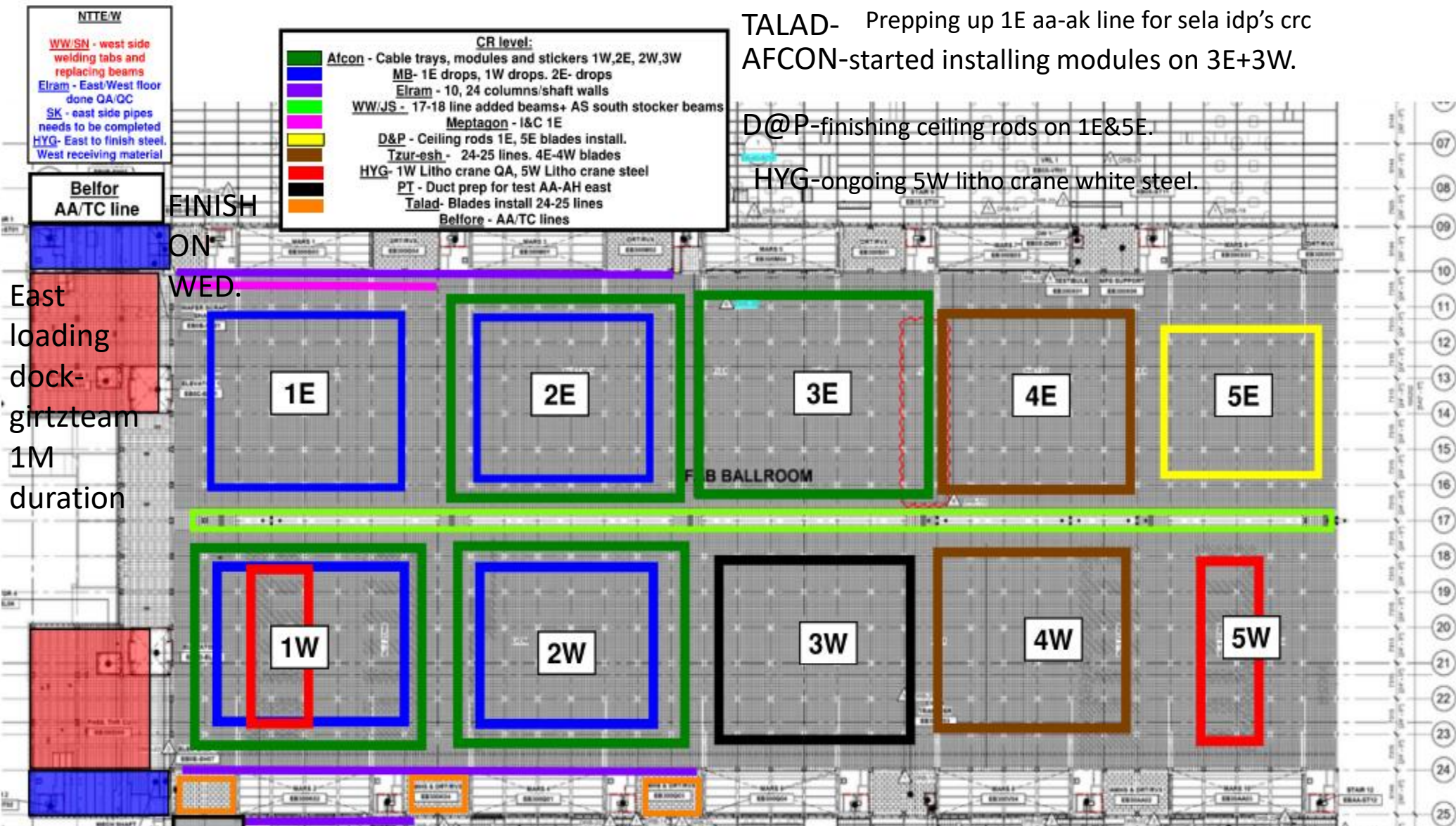
# SUBFAB BUILDOUT MOD 2





# SUBFAB CRC TOPCOAT





TALAD- Prepping up 1E aa-ak line for sela idp's crc  
 AFCON-started installing modules on 3E+3W.

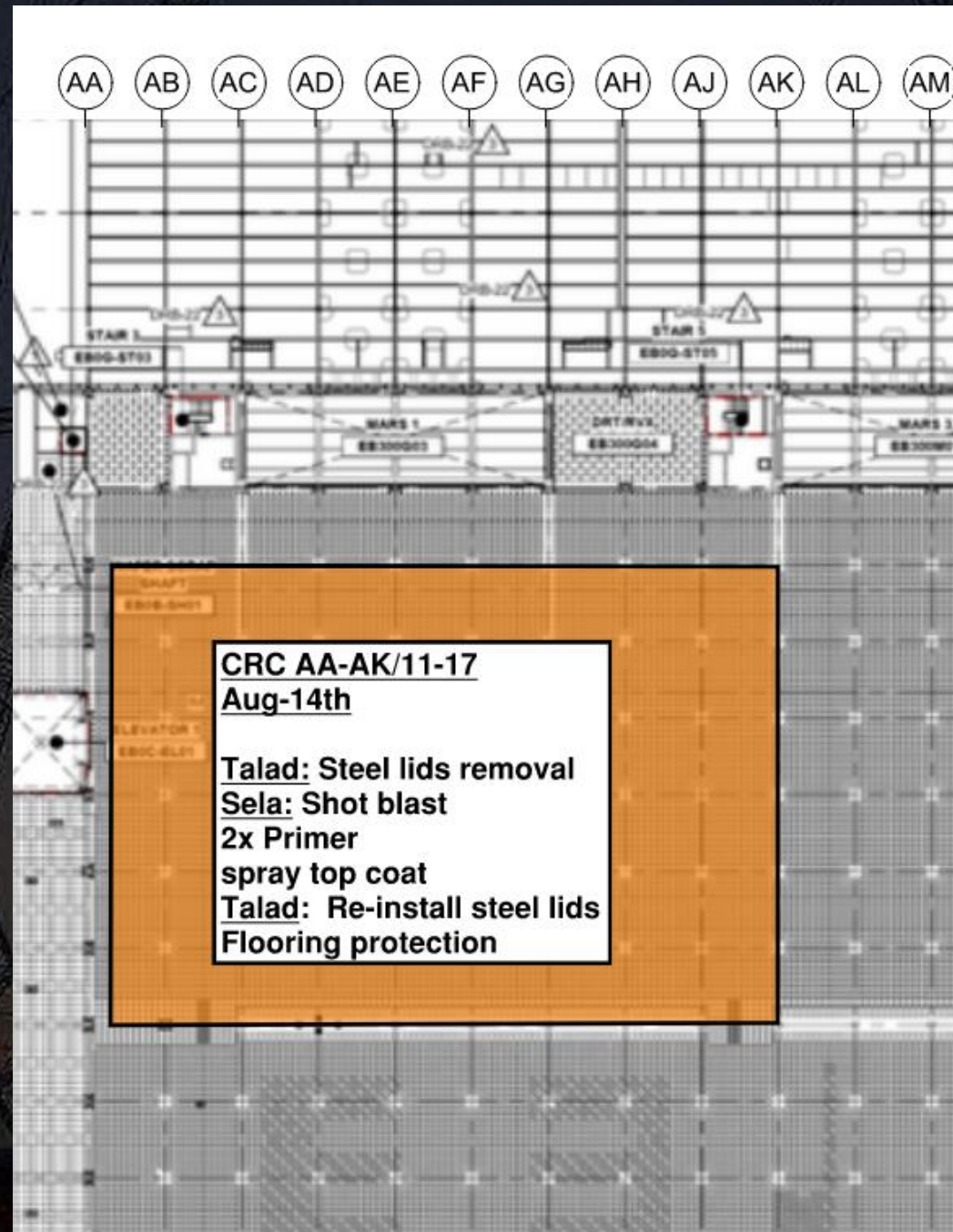
D@P-finishing ceiling rods on 1E&5E.  
 HYG-ongoing 5W litho crane white steel.

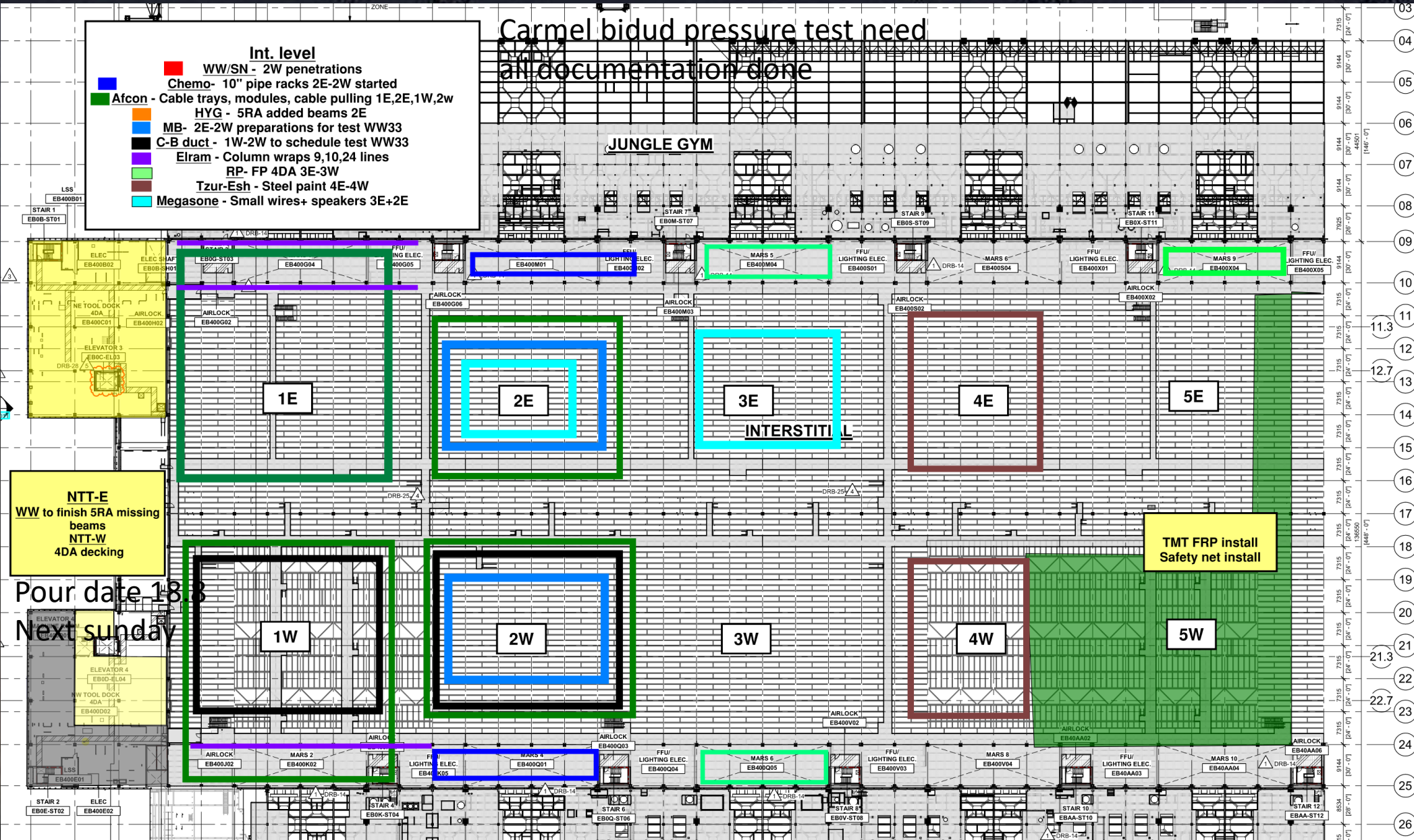
East loading dock-girtzteam 1M duration

FINISH ON WED.

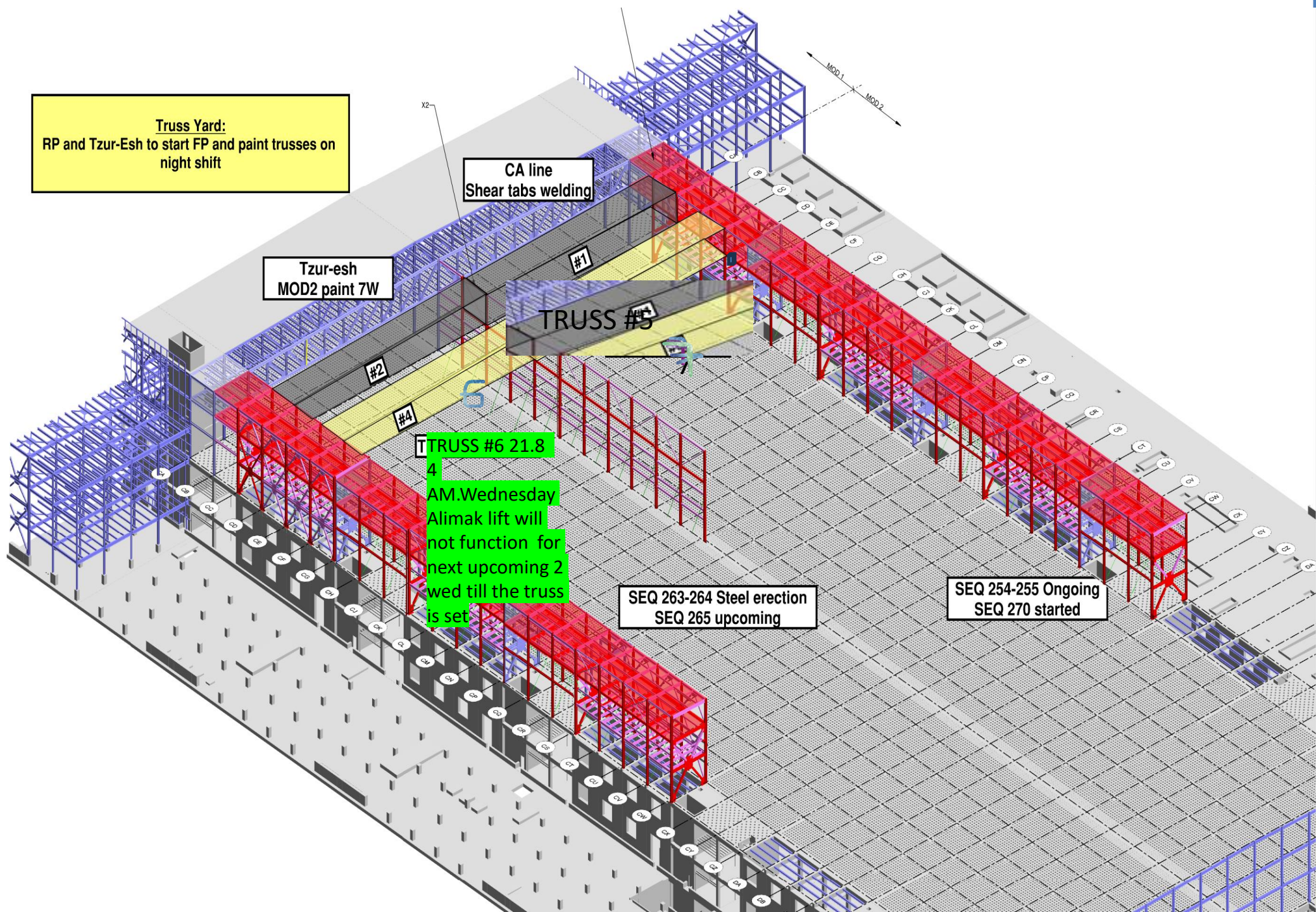
MB-installing supports for high & tight activities  
 at the link. Pressure test on Tuesday 17:00  
 18:00 grids ah-aq lines 9-17











Truss Yard:  
RP and Tzur-Esh to start FP and paint trusses on night shift

CA line  
Shear tabs welding

Tzur-esh  
MOD2 paint 7W

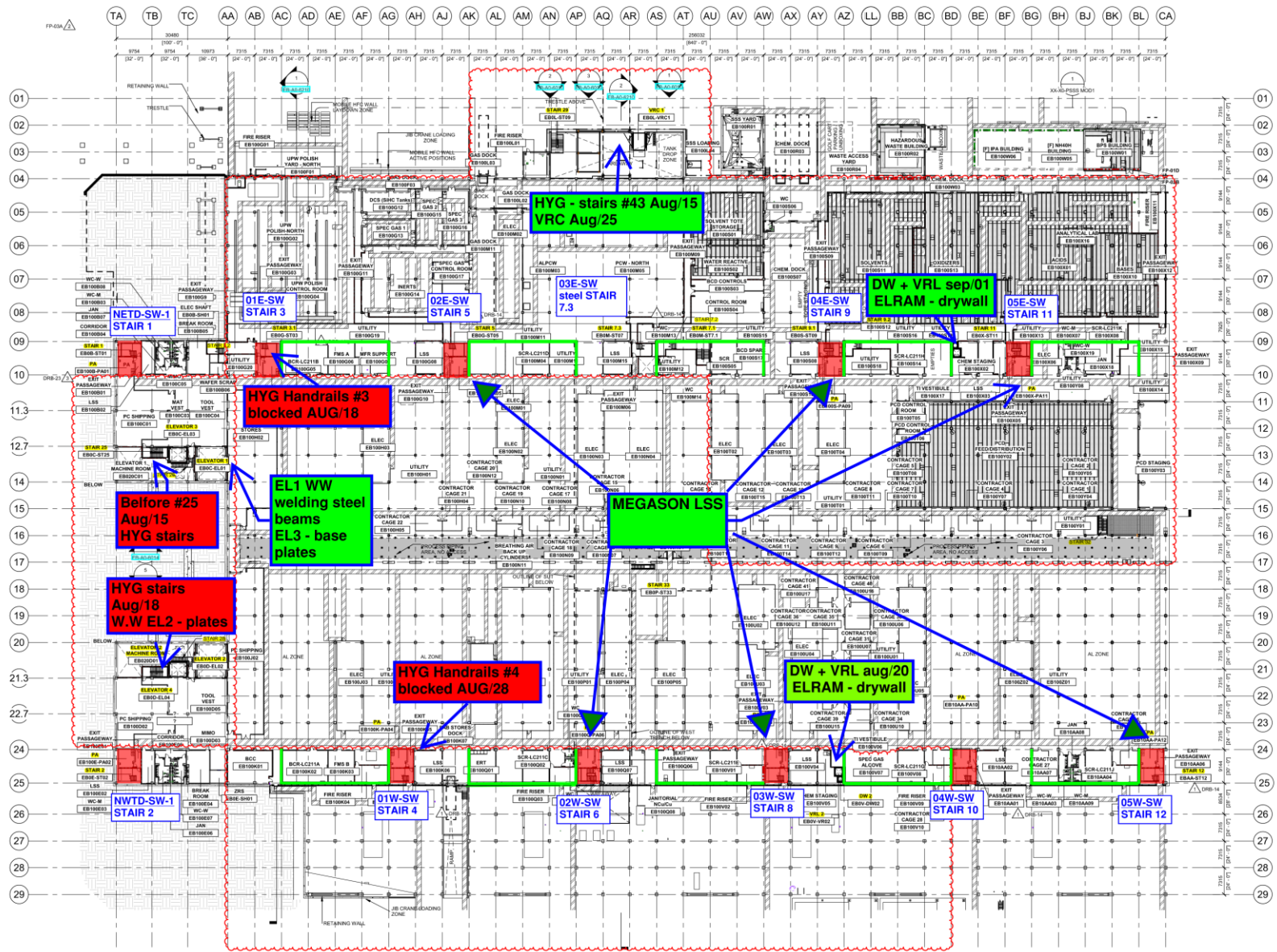
TRUSS #5

TRUSS #6 21.8  
4 AM. Wednesday  
Alimak lift will  
not function for  
next upcoming 2  
wed till the truss  
is set

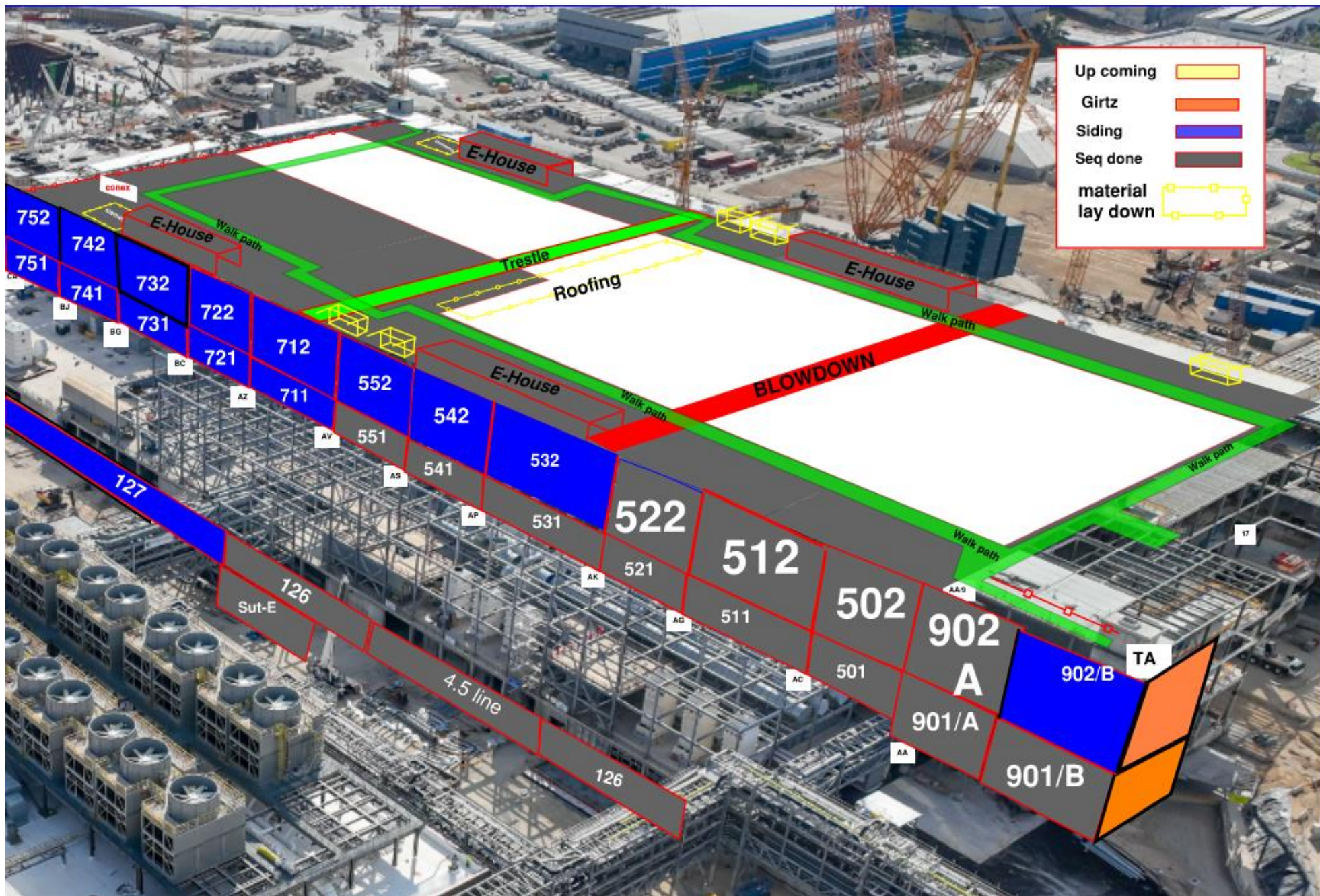
SEQ 263-264 Steel erection  
SEQ 265 upcoming

SEQ 254-255 Ongoing  
SEQ 270 started

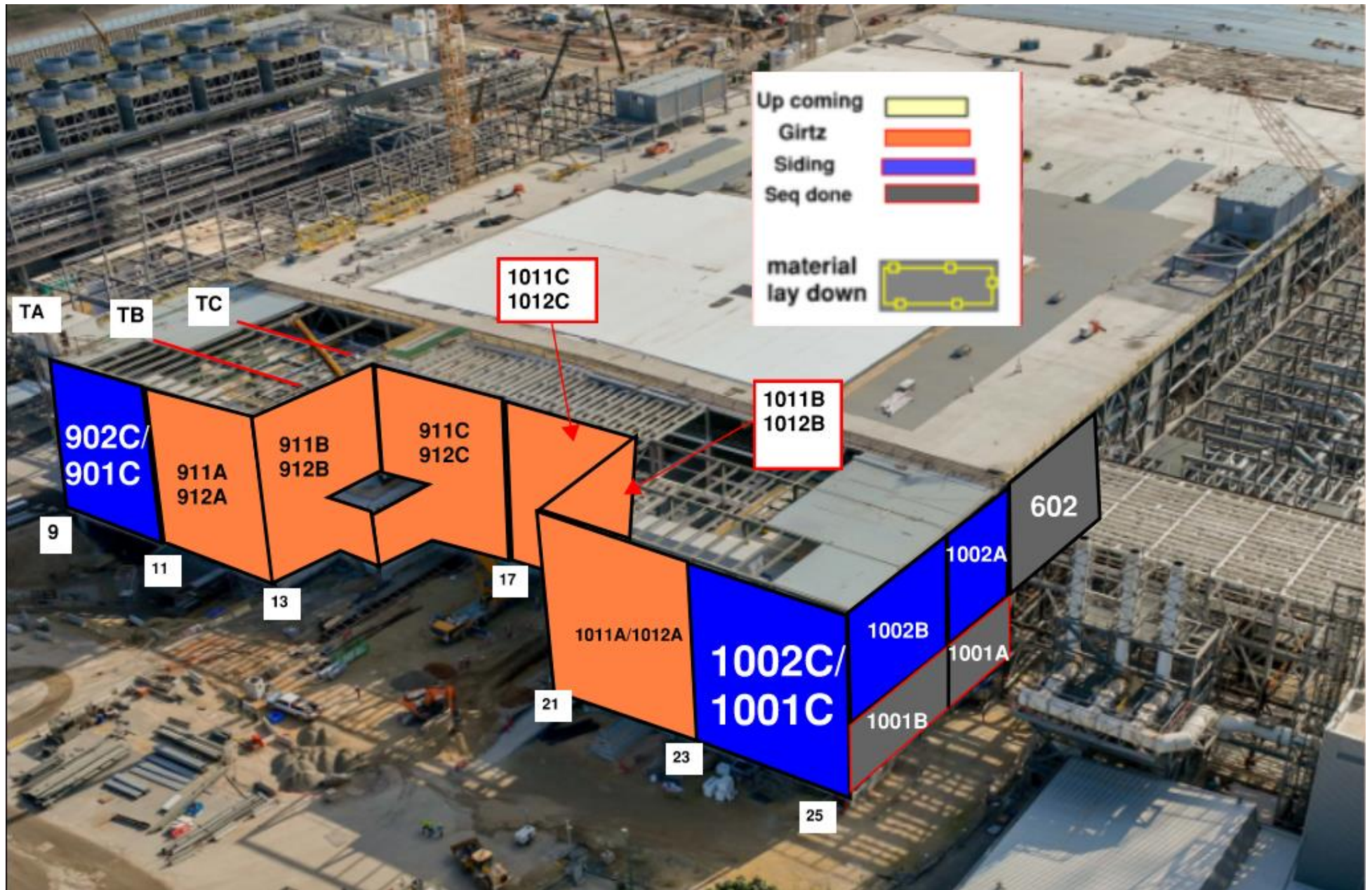




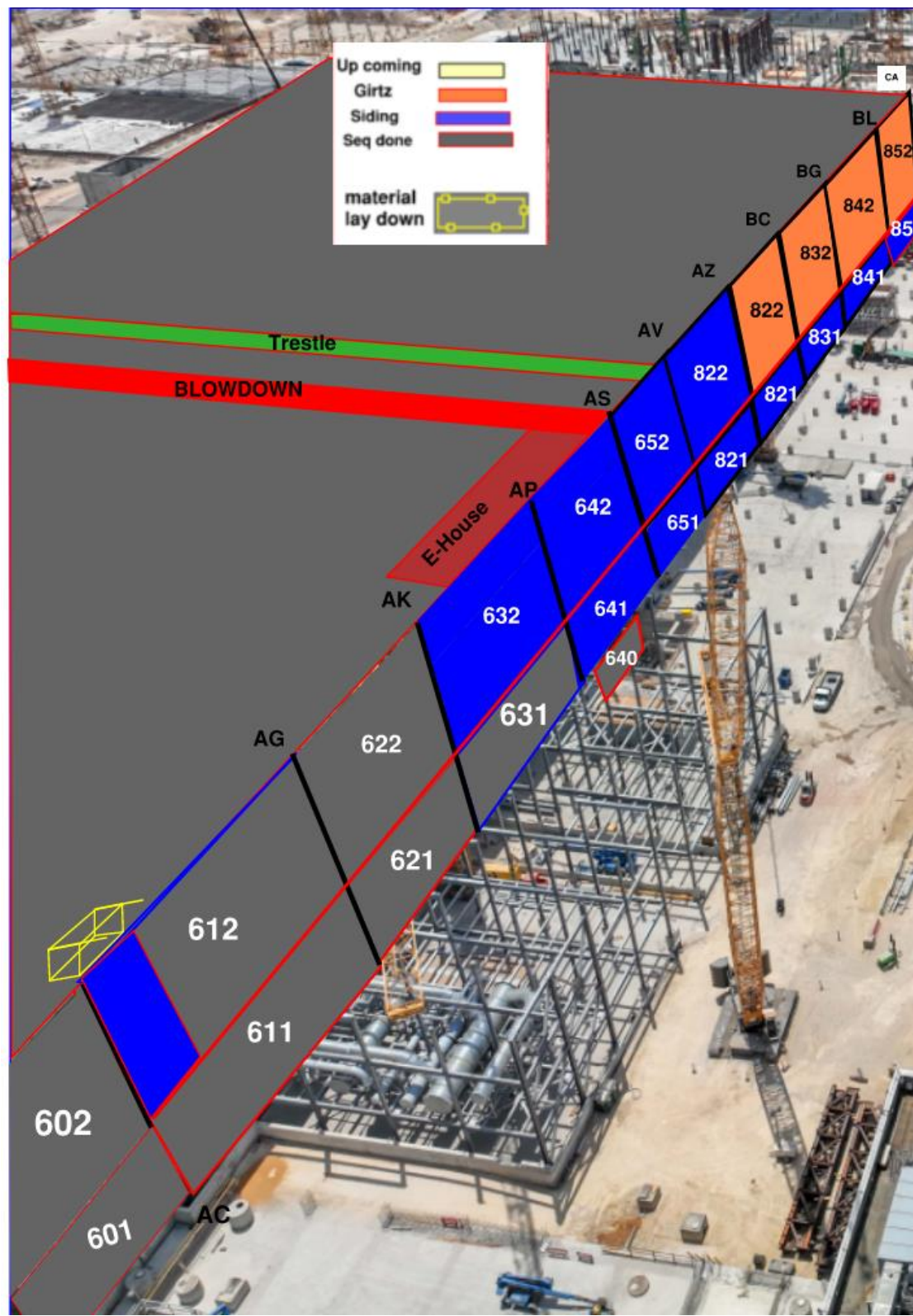








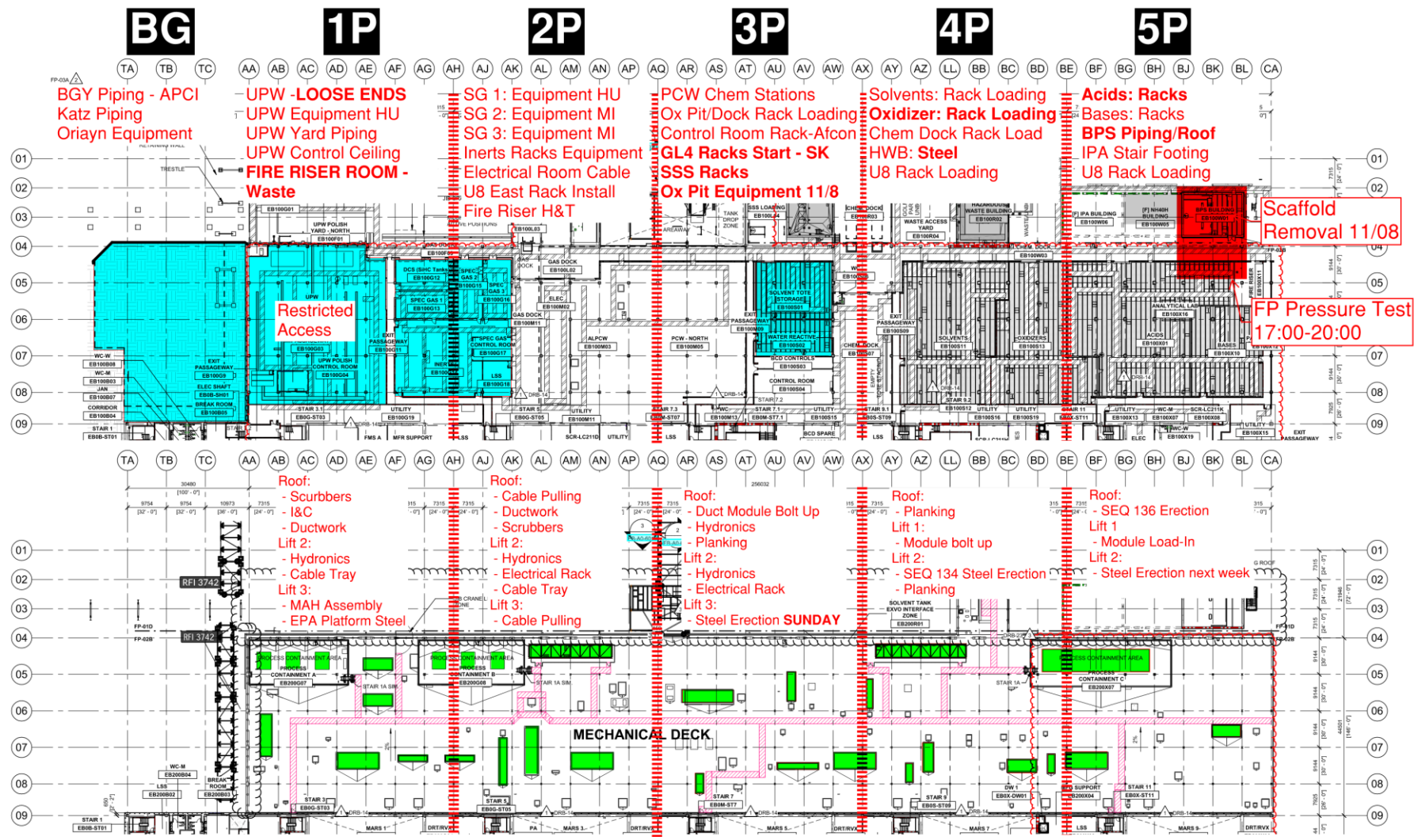





# PSSS.1

Utility Level  
1YA

PSSS Roof  
2SA







**PSSS P1**  
**PachTaas Operation**  
**Plates: 15-08-2024**  
**Air Blower: 20-08-2024**  
**EPA Platform: 26-08-2024**

Single  
EPA Platform

Fan



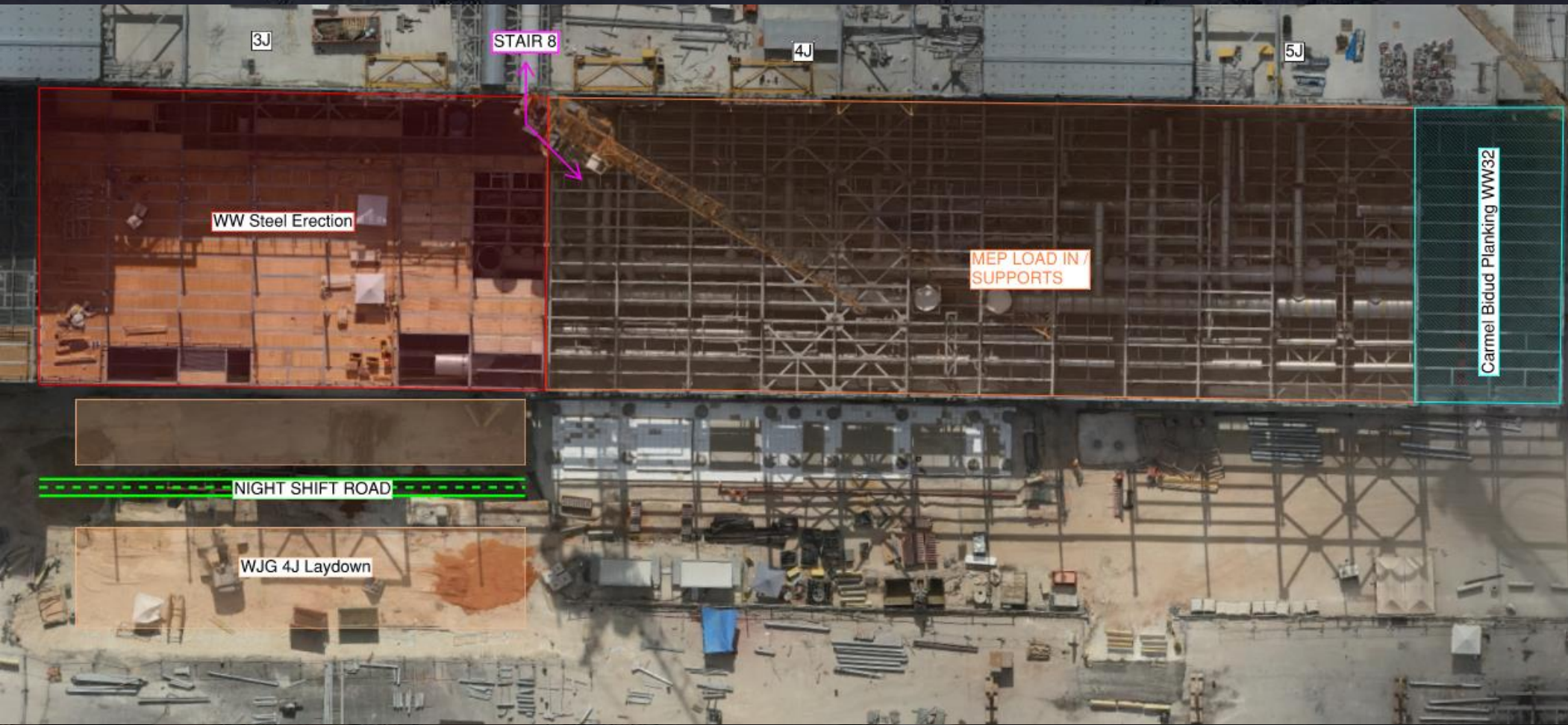


# WJG 01J, 02J LIFT 2 & 3



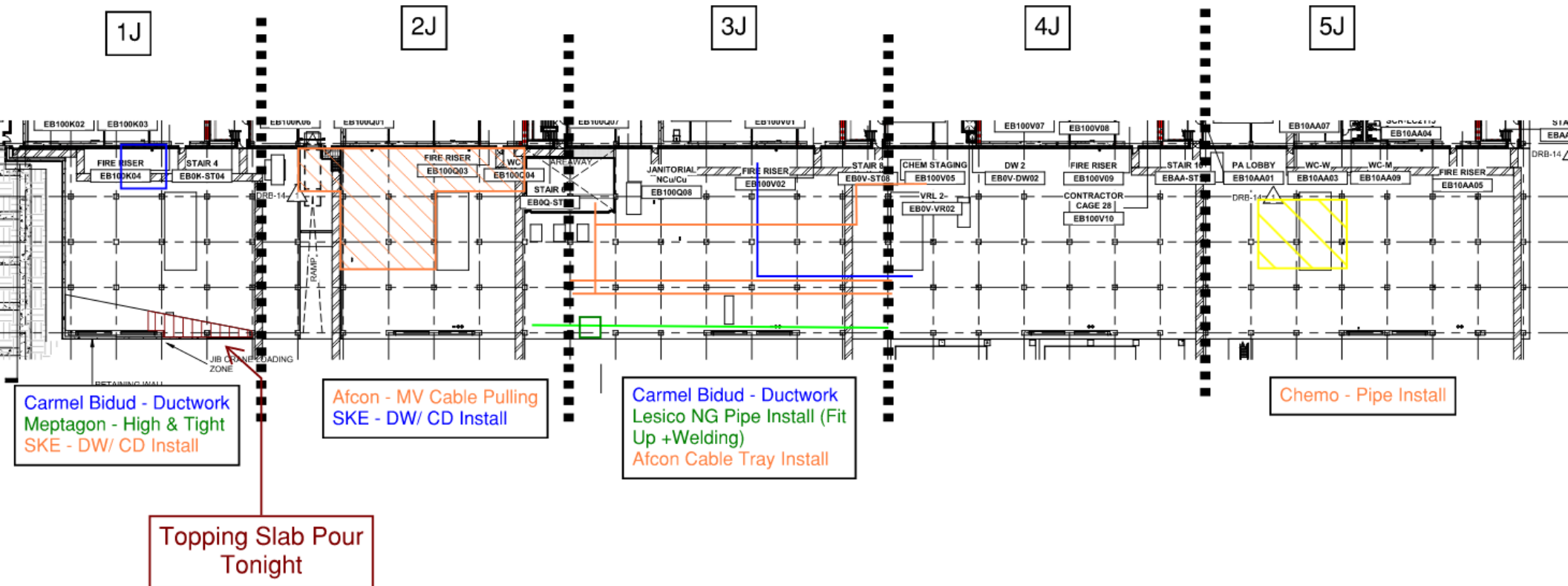


# WJG 03J, 04J, 05J LIFT 2 & 3





# WJG UTILITY LEVEL BUILD OUT







## CUB 1

### EAST YARD

TRUCK OFFLOAD 1

TRUCK OFFLOAD 2

TRUCK OFFLOAD 3

TRUCK OFFLOAD 4

TRUCK OFFLOAD 5

STAIR 8

STAIR 9

STAIR 10

STAIR 12

STAIR 13

STAIR 14

STAIR 15

STAIR 16

TRUCK OFFLOAD 6

TRUCK OFFLOAD 7

PA STAIR 1 (TO ROOF)

PA

PA

STAIR 17

STAIR 18

STAIR 19

STAIR 20

STAIR 21

STAIR 22

STAIR 23

STAIR 24

STAIR 25

STAIR 26

STAIR 27

STAIR 28

STAIR 29

STAIR 30

STAIR 31

STAIR 32

STAIR 33

STAIR 34

STAIR 35

STAIR 36

BCS BCS BSA

Build access to BCS Cneter and North

GSW

OSS

CSW

QC and Punchlist in Task Force

ELECTRICAL

GIS Gas Insulated Switchgear  
Leak observed Aug 15th  
Seimens investigating

Fire Suppression Testing  
Aug. 20

WWT SUPP.

ELECTRICAL SHOP

CRITICAL SPARE PARTS / PUMP REBUILD

FMS CONTROL ROOM / I&C LAB

CUB Mech/Electrical I&C White Board Meeting in MECH WORKSHOP Rm.

MECH. CONTROL ROOM

MECH. WORKSHOP

LIWS LAB

FACILITIES SHOP

TMXW

QC and Punchlist in Task Force

Analyzer Room

NH4W  
QC and Punchlist in Task Force

NORTH YARD

SOUTH YARD

WATER TREATMENT

SAND FILTERS

CHILLERS

UPN 114 recirculating clean water UPN 115,116,117 Stage 3 Flush  
UPN 126 Stage 2 Flush  
UPN 111 Stage 1 Flush

CHILLERS

Restore CH 126-2-10

Load Sand Filters  
DV walks WW 34/35

Fire Alarm devices Reporting to Intel Blue tag. FMS A-B

Fire Suppression Testing Aug. 22

BOILERS

Vendor pipe spool due onsite Aug 25 with boiler start up WW 35

Damper installs WW 34 EER needed for Actuators

OIL FUEL TANK

D.V. Walk WW 34. Fuel Polishing, Tags and 3 outstanding instruments Aug. 18

Nalco Vendor System  
Check out Consturction  
Complete Aug. 21-28  
EER needed for Injection  
Points in 114 at roof.

Pressure Test ROP/URL  
Aug.20  
Barzel

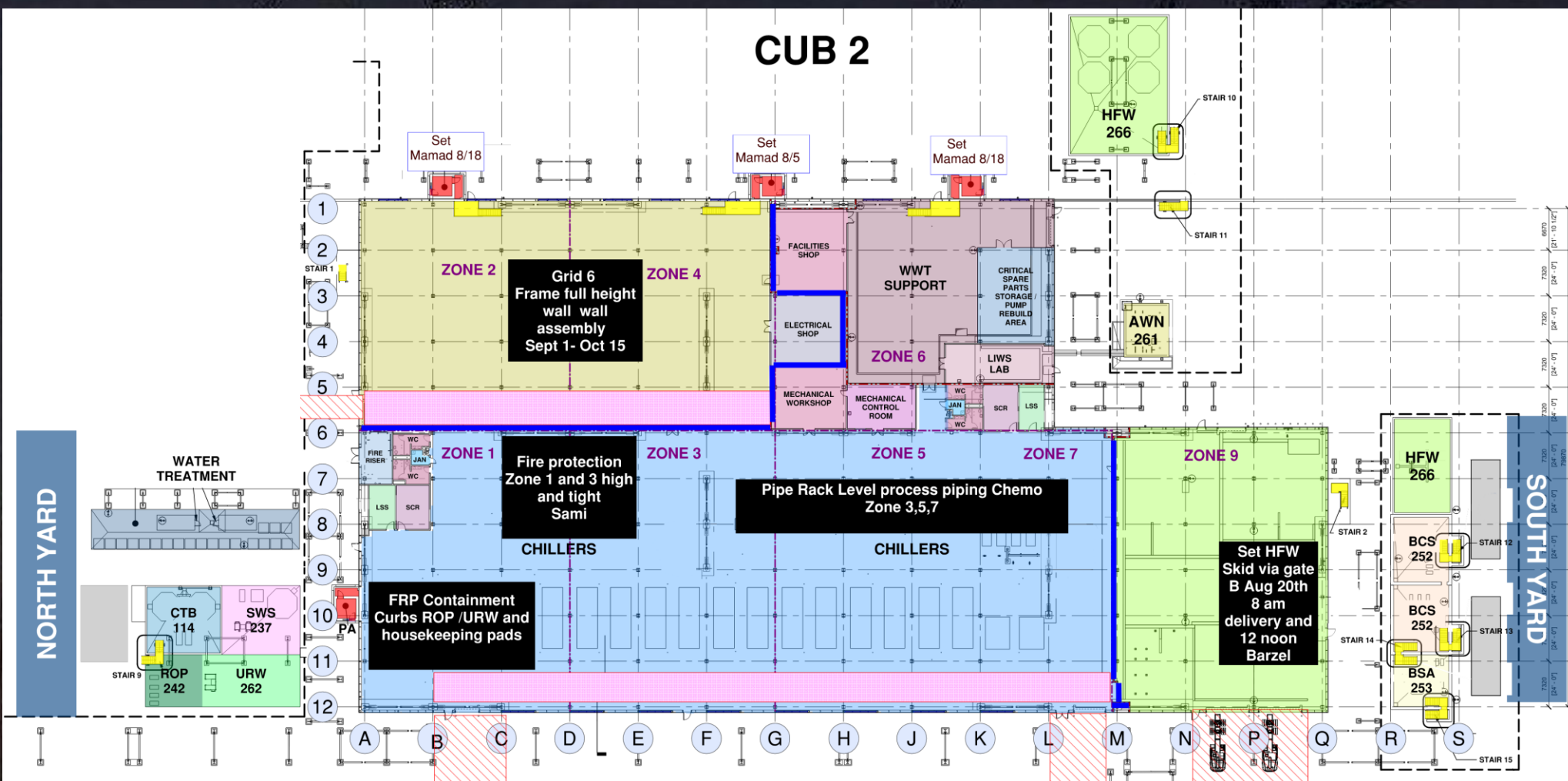
ROP 242

URW 262

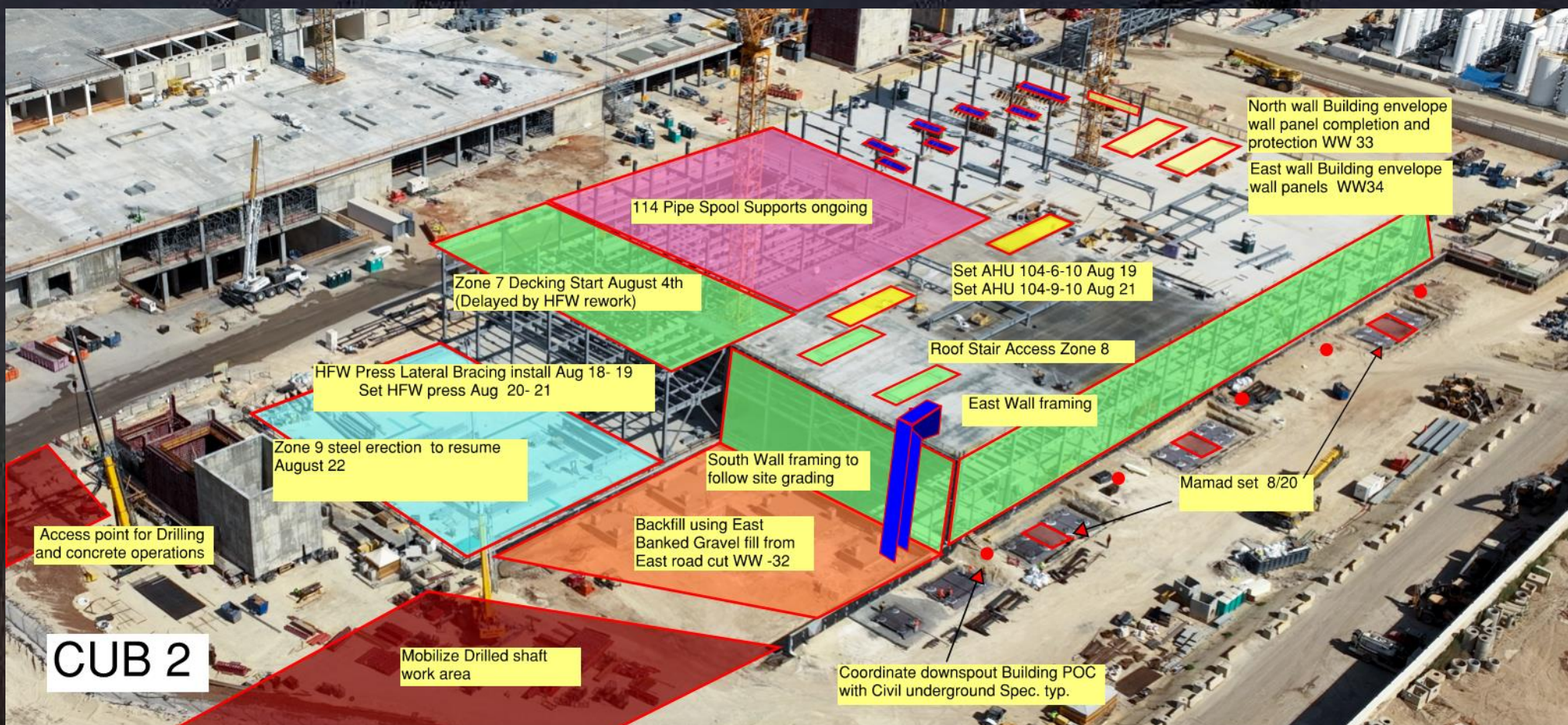




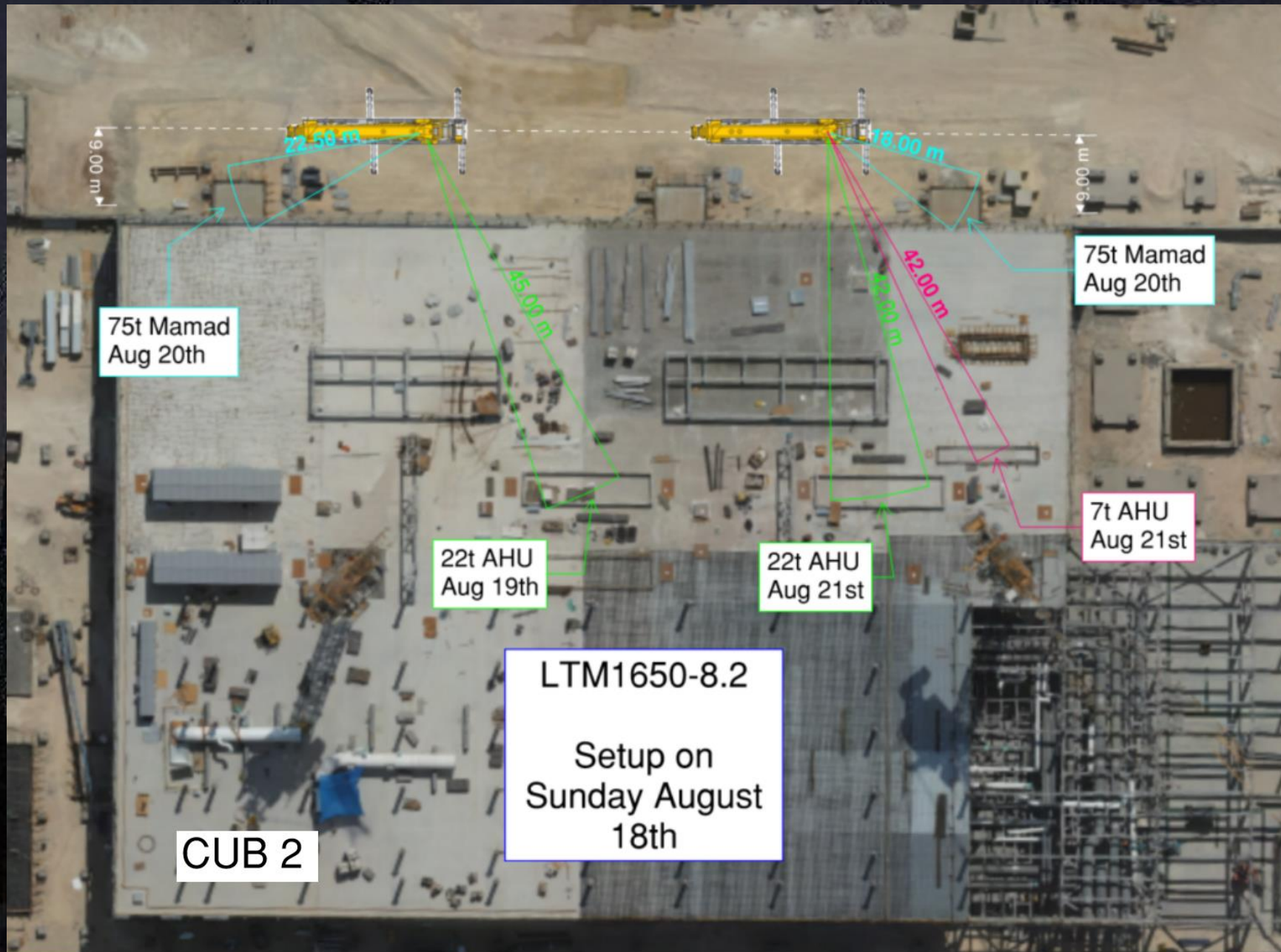




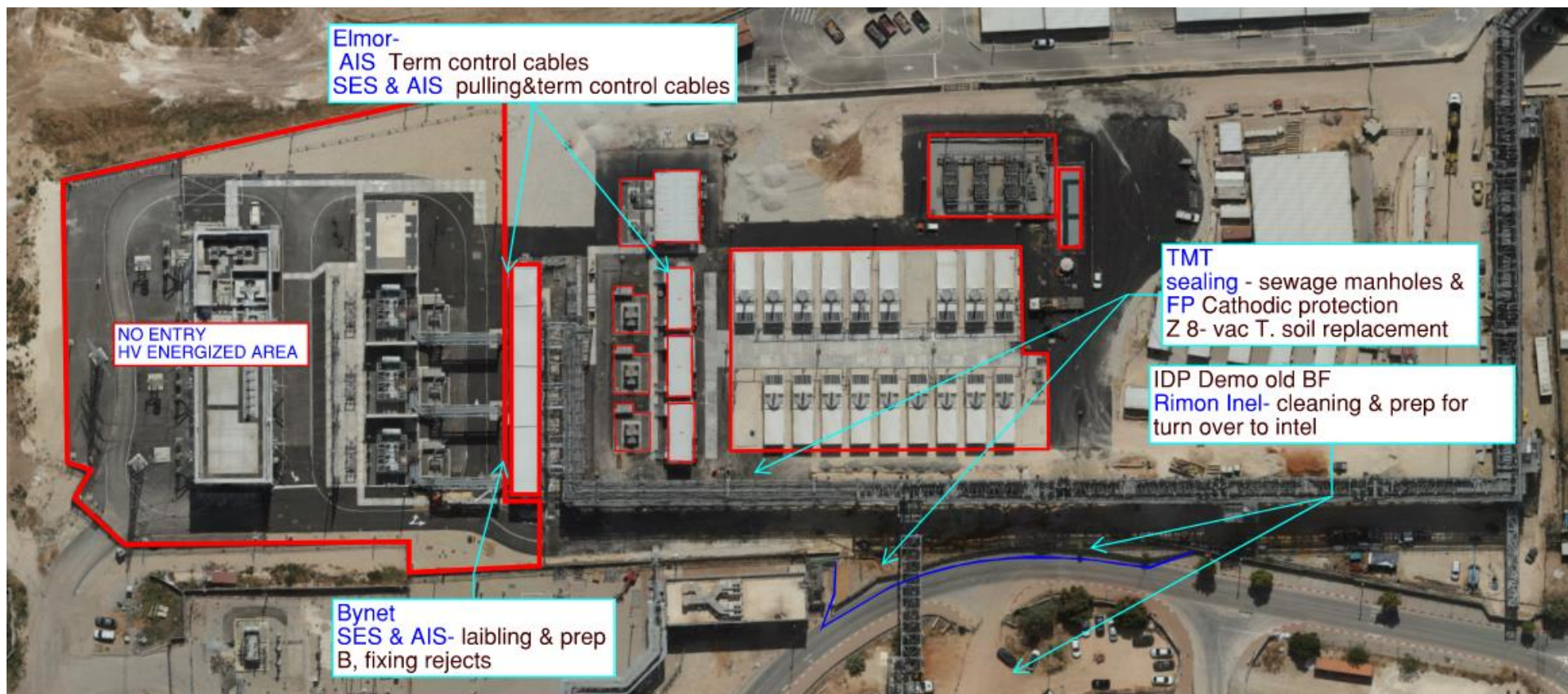


















# Trestle - MOD 2 Steel erection

T-17 Lvl 1

August 14

August 11

August 13

August 18

August 15

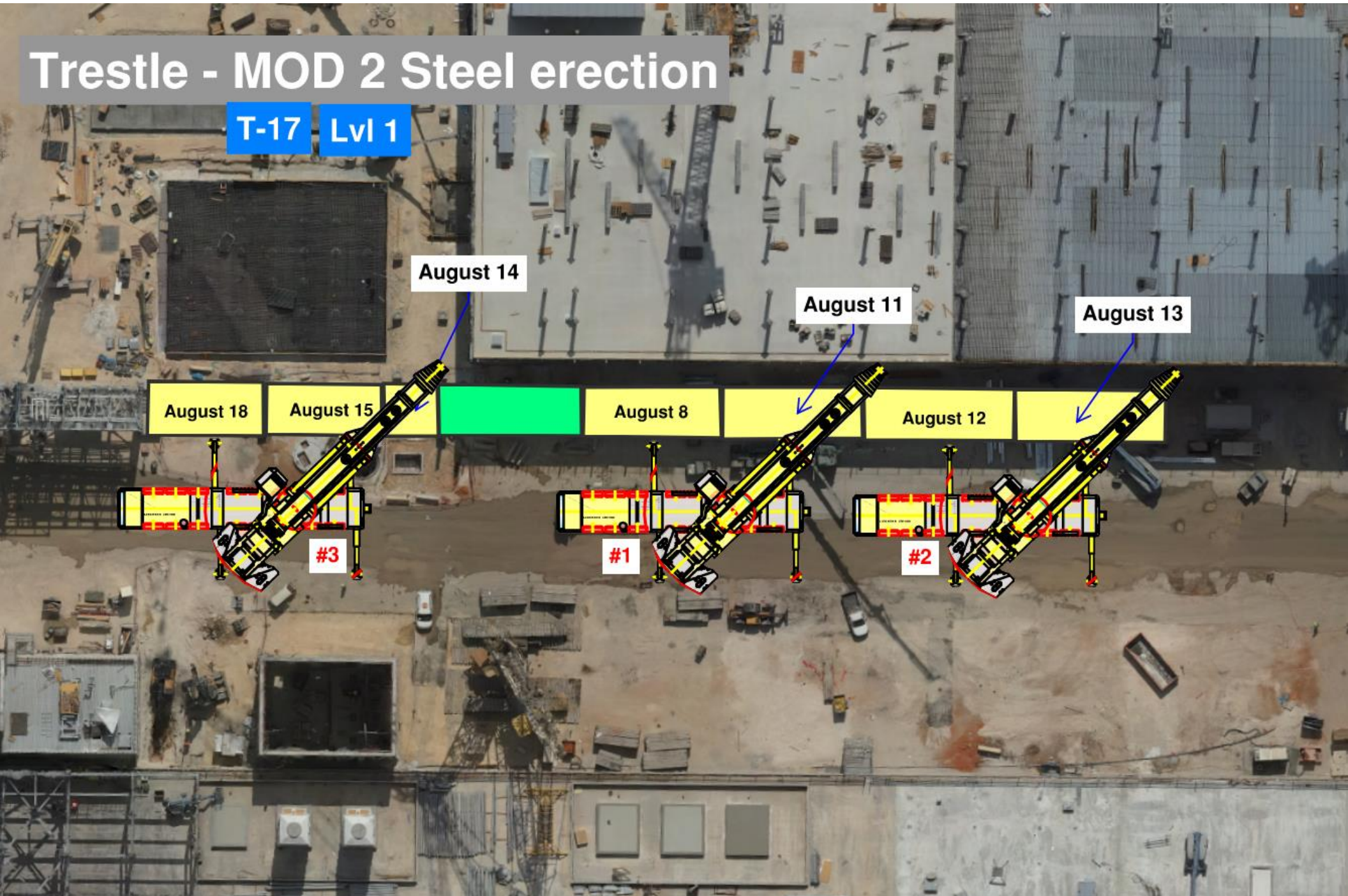
August 8

August 12

#3

#1

#2





# Trestle - MOD 2 Steel erection

T-17 Lvl 2

August 19

August 25

August 27

August 21

August 20

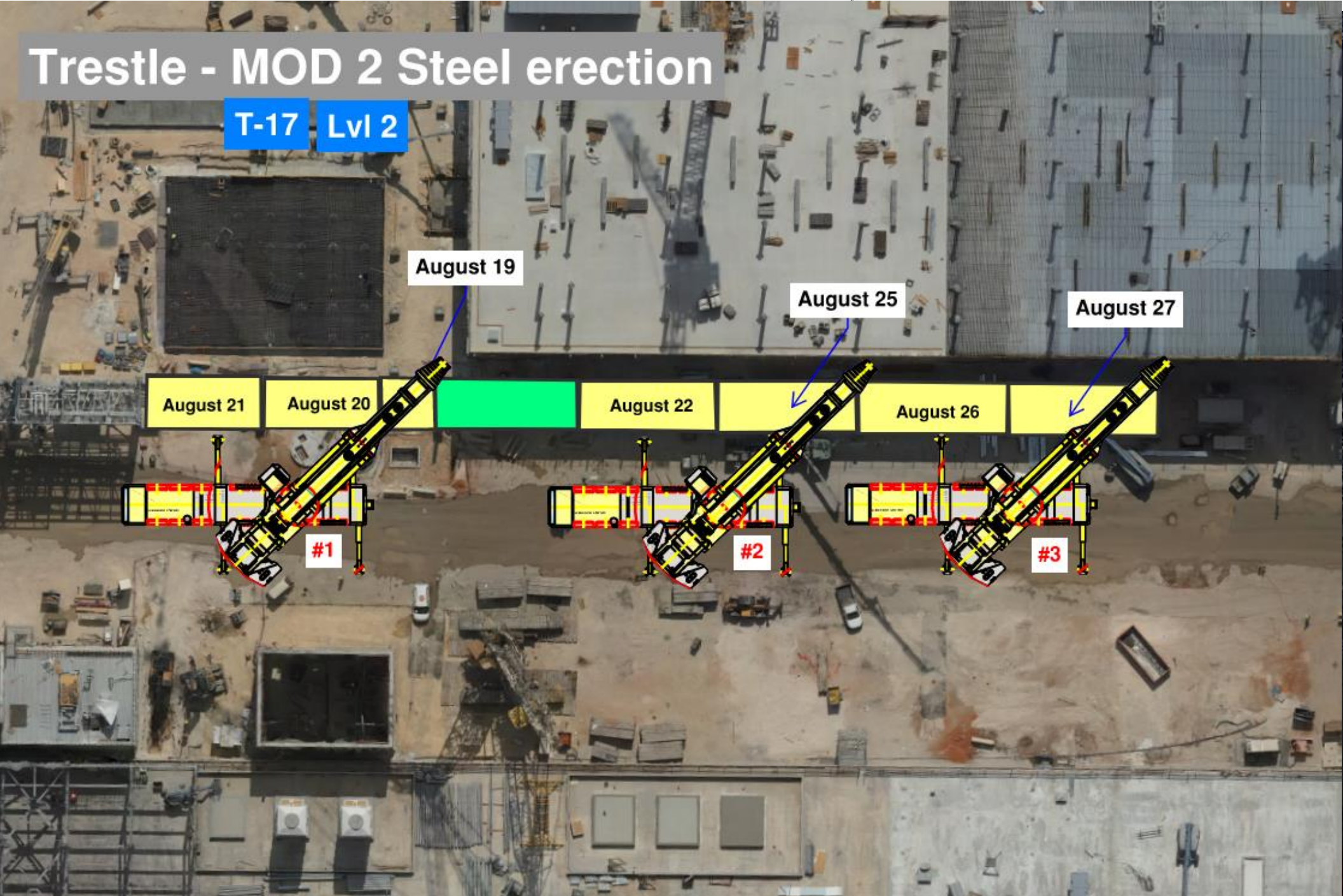
August 22

August 26

#1

#2

#3

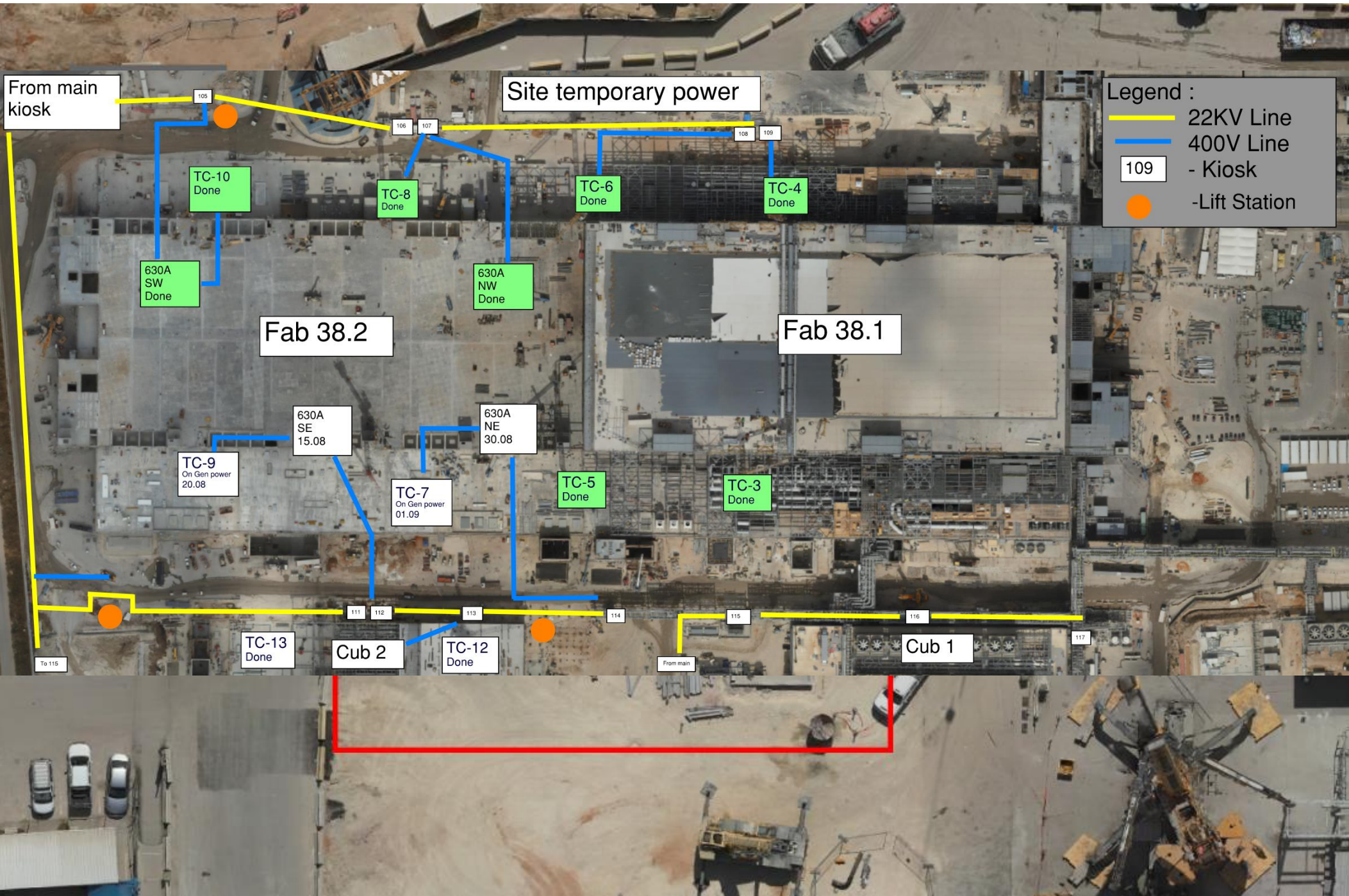




BSGS









# Daily Coordination Meeting

Site Logistics  
North Gate B

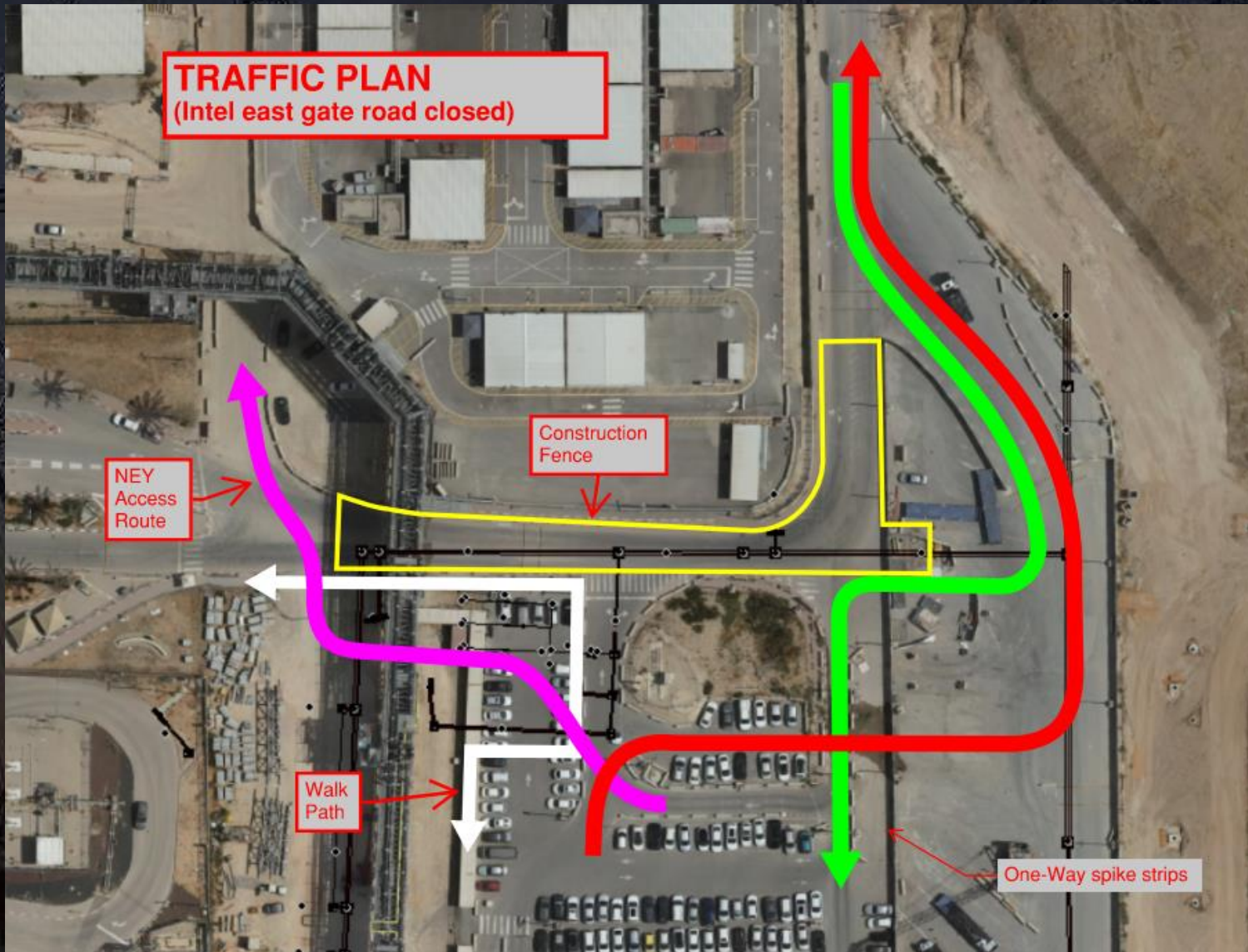




# Daily Coordination Meeting

Site Logistics

Traffic Plan







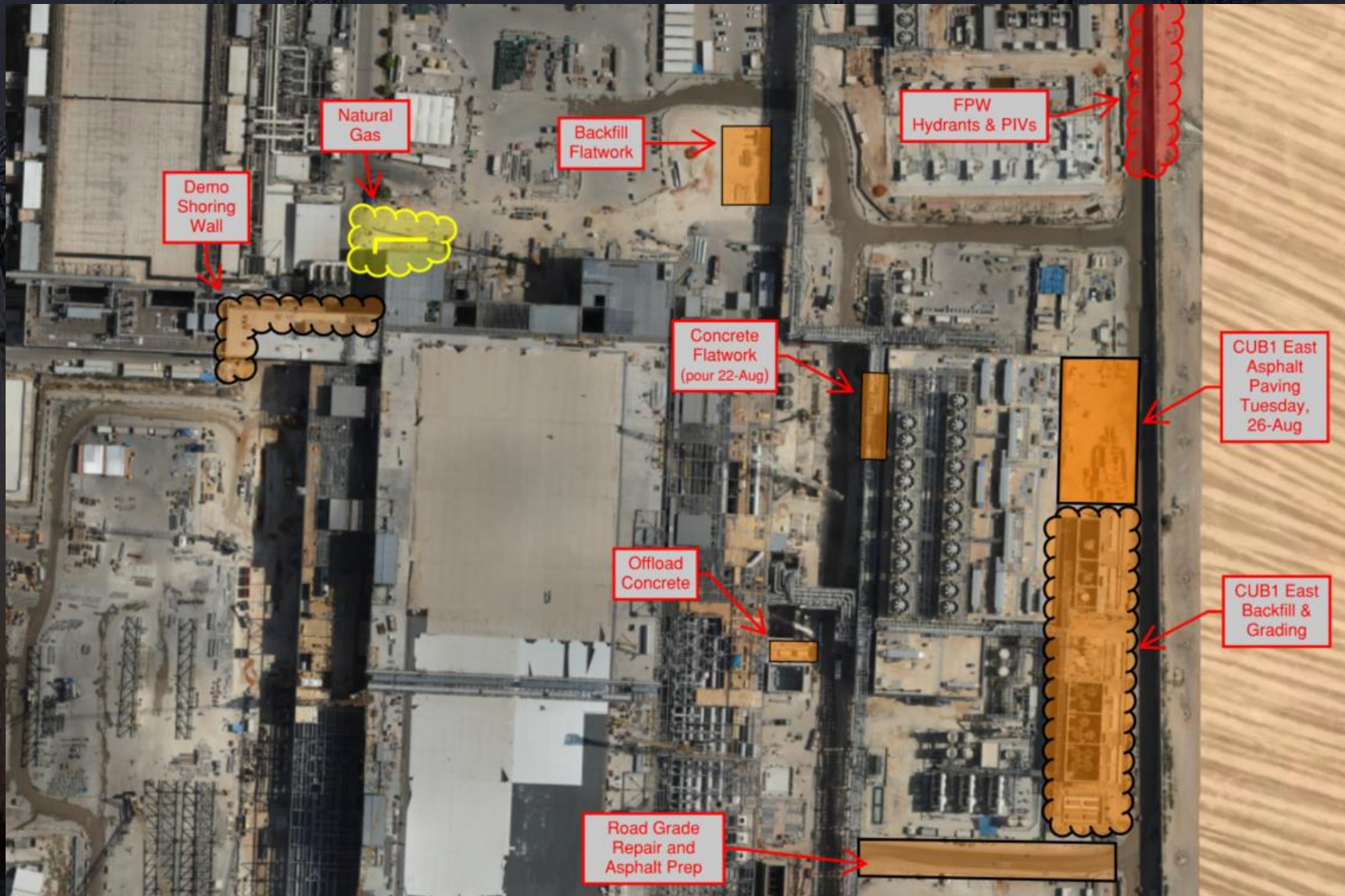
**HOFFMAN CONSTRUCTION COMPANY**



# Daily Coordination Meeting

Site Logistics

North





# Daily Coordination Meeting

Site Logistics

South



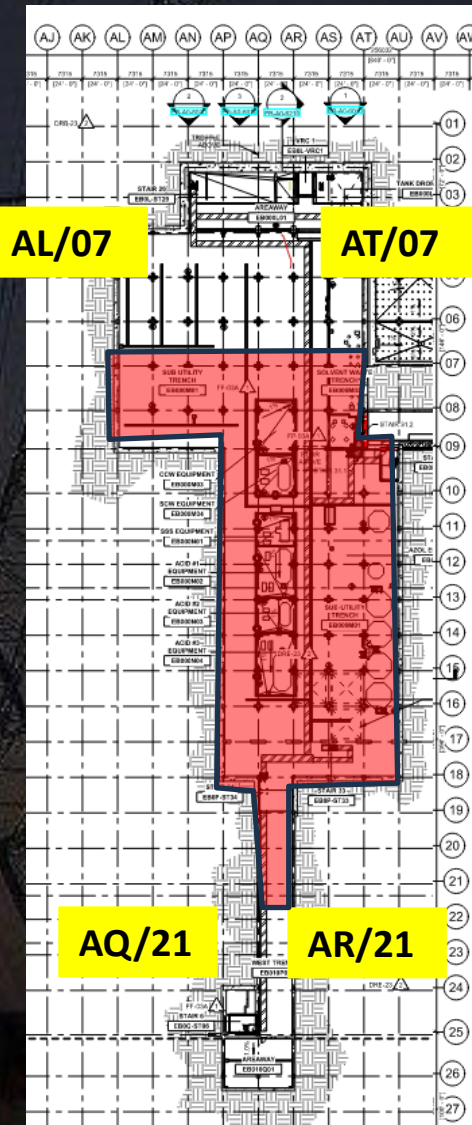




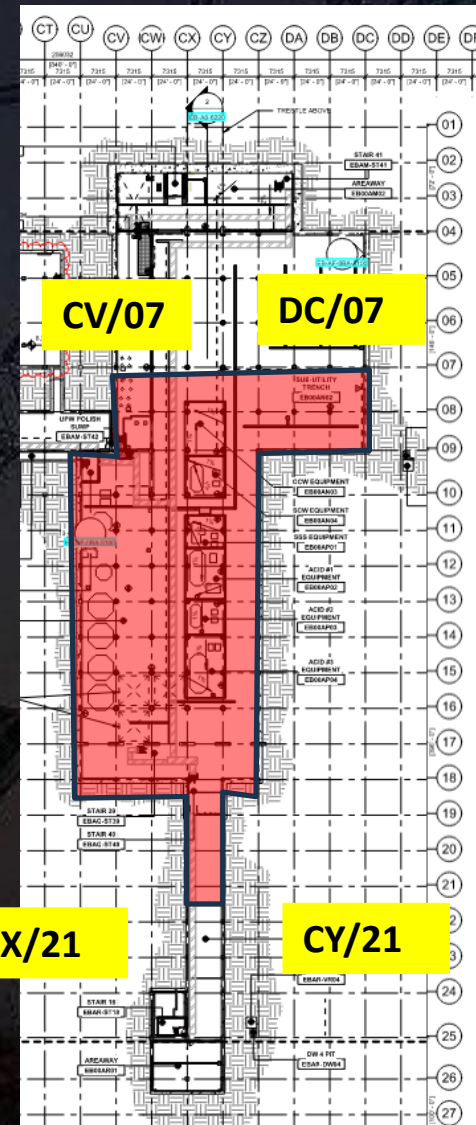
# Daily Coordination Meeting

## Site Logistics - Protected Areas (SUT Level)

SUT1



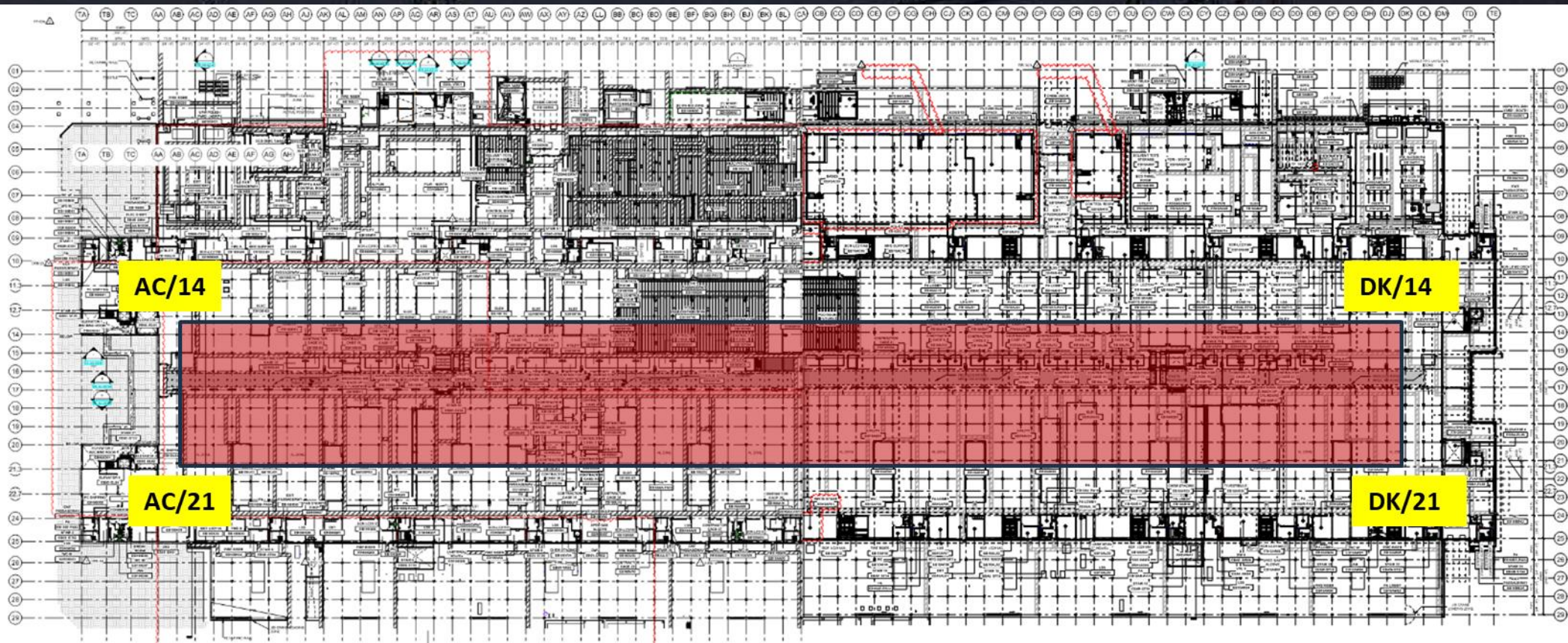
SUT2





# Daily Coordination Meeting

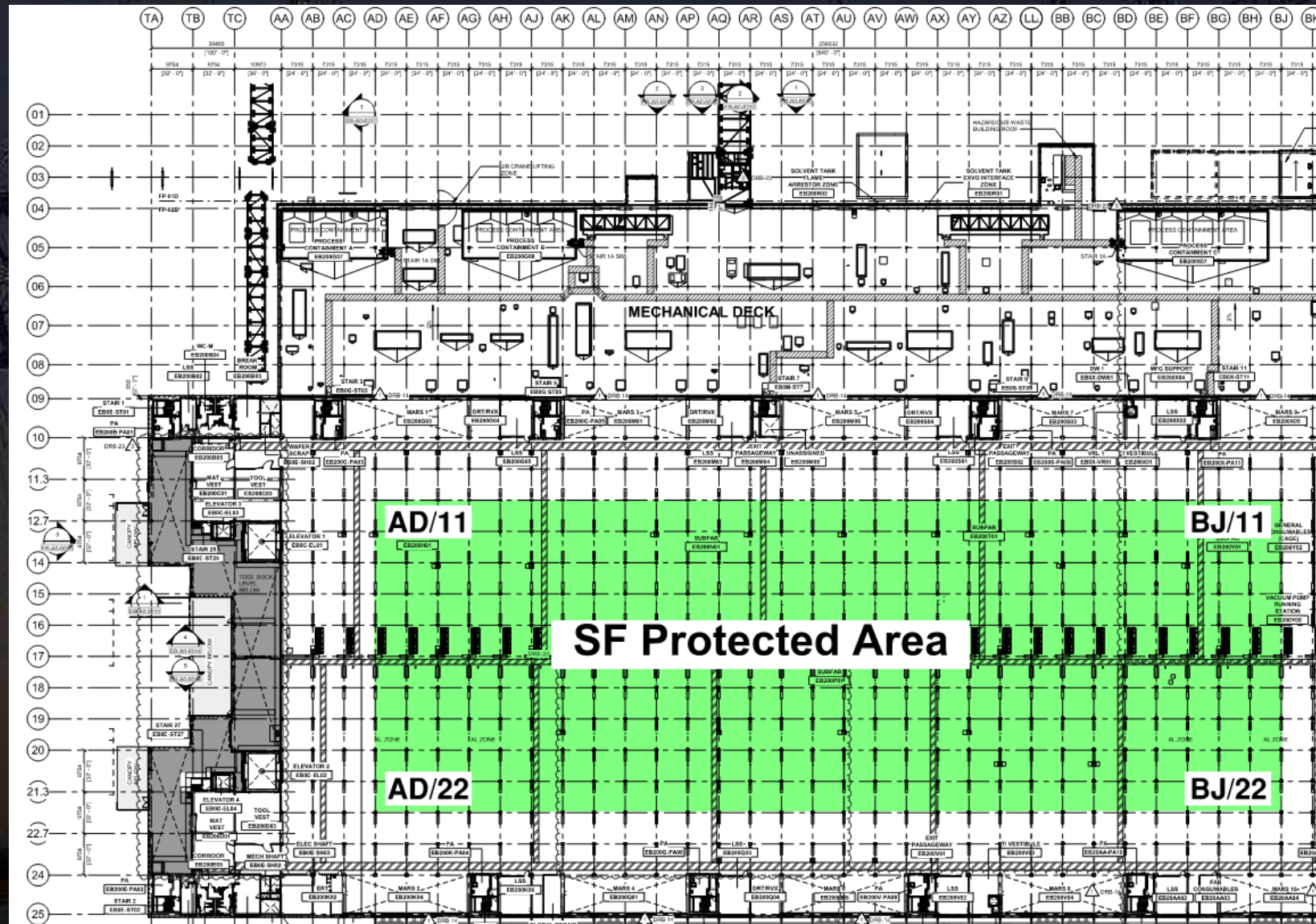
Site Logistics - Protected Areas (Utility Level)





# Daily Coordination Meeting

## Site Logistics - Protected Areas (Subfab Level)

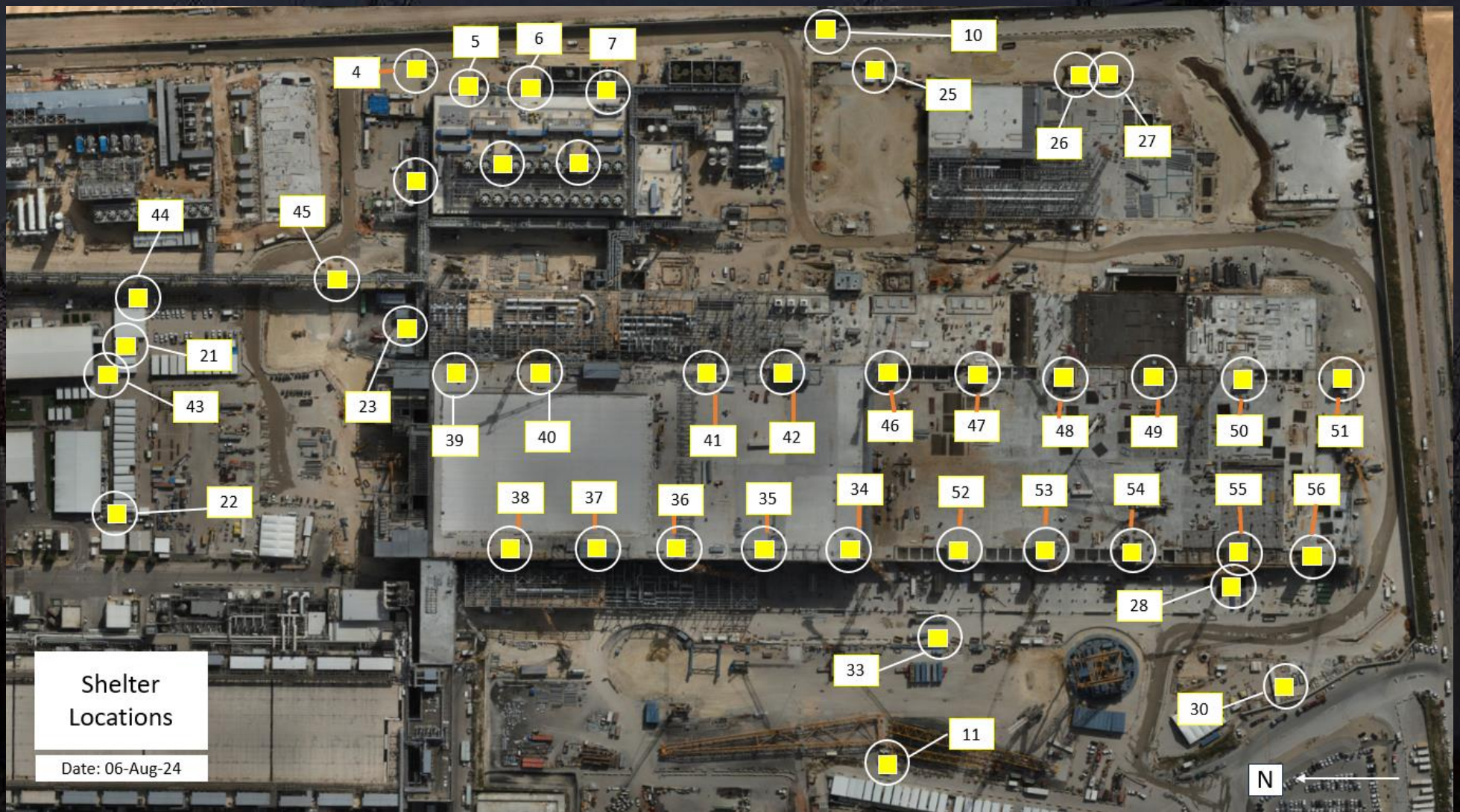




# Daily Coordination Meeting

Site Logistics

Protected Areas





# Daily Coordination Meeting

## WATER BOTTLE FILLING & PERSONNEL COOLING STATIONS

BF (1) AT GIS






# Commissioning

## WW32


TCC Predicted: 327 (47 past due)

TCC Completed: **186**

Delta: **-141** (-188 total) 

CCC Predicted: **120** (44 past due)

CCC Completed: **12**

Delta: **-108** (-152 total) 

GT Predicted: **90** (20 past due)

GT Completed: **28**

Delta: **-62** (-82 total) 

## Summary:

We are falling behind

- Need **more** Focus on Cx
- Need **more** Subcontractor Cx Management
- Need **more** manpower to complete construction on time




# Communication


- We've said it before, but communication is vital on a project of this scale.
- Every single person in here can improve their communication.
- However, some of us are not even doing the bare minimum.
- The 14:00 topics are to be shared with every member of your crews, each day. If you choose to take notes during the meeting to highlight the big things that affect your crews—that is fine. But each person out there should know the focus items and the EHS topics and the logistical information that relates to them. This could be stair closures, pedestrian path changes, hoisting activities, etc.
- The same goes for whiteboard topics.
- The meeting minutes are distributed for these meetings. Use them.





# Heat Index- August 19<sup>th</sup>

	temperature (°F)																
	80	82	84	86	88	90	92	94	96	98	100	102	104	106	108	110	
Relative Humidity (%)	40	80	81	83	85	88	91	94	97	101	105	109	114	119	124	130	136
	45	80	82	84	87	89	93	96	100	104	109	114	119	124	130	137	
	50	81	83	85	88	91	95	99	103	108	113	118	124	131	137		
	55	81	84	86	89	93	97	101	106	112	117	124	130	137			
	60	82	84	88	91	95	100	105	110	116	123	129	137				
	65	82	85	89	93	98	103	108	114	121	128	136					
	70	83	86	90	95	100	105	112	119	126	134						
	75	84	88	92	97	103	109	116	124	132							
	80	84	89	94	100	106	113	121	129								
	85	85	90	96	102	110	117	126	135								
	90	86	91	98	105	113	122	131									
	95	86	93	100	108	117	127										
100	87	95	103	112	121	132											

 Caution

 Extreme Caution

 Danger

 Extreme Danger

## Extreme Caution

- Ensuring water and shaded areas available
- Acclimating workers
- Emergency planning and response
- Training workers and supervisors on the signs of heat stress and preventative measures
- Modified work schedules and/or rotating out workers
- Monitoring of workers for signs of heat stress



# Daily Coordination Meeting



14:00 Sign In