

Daily Coordination Meeting



Daily Coordination Meeting

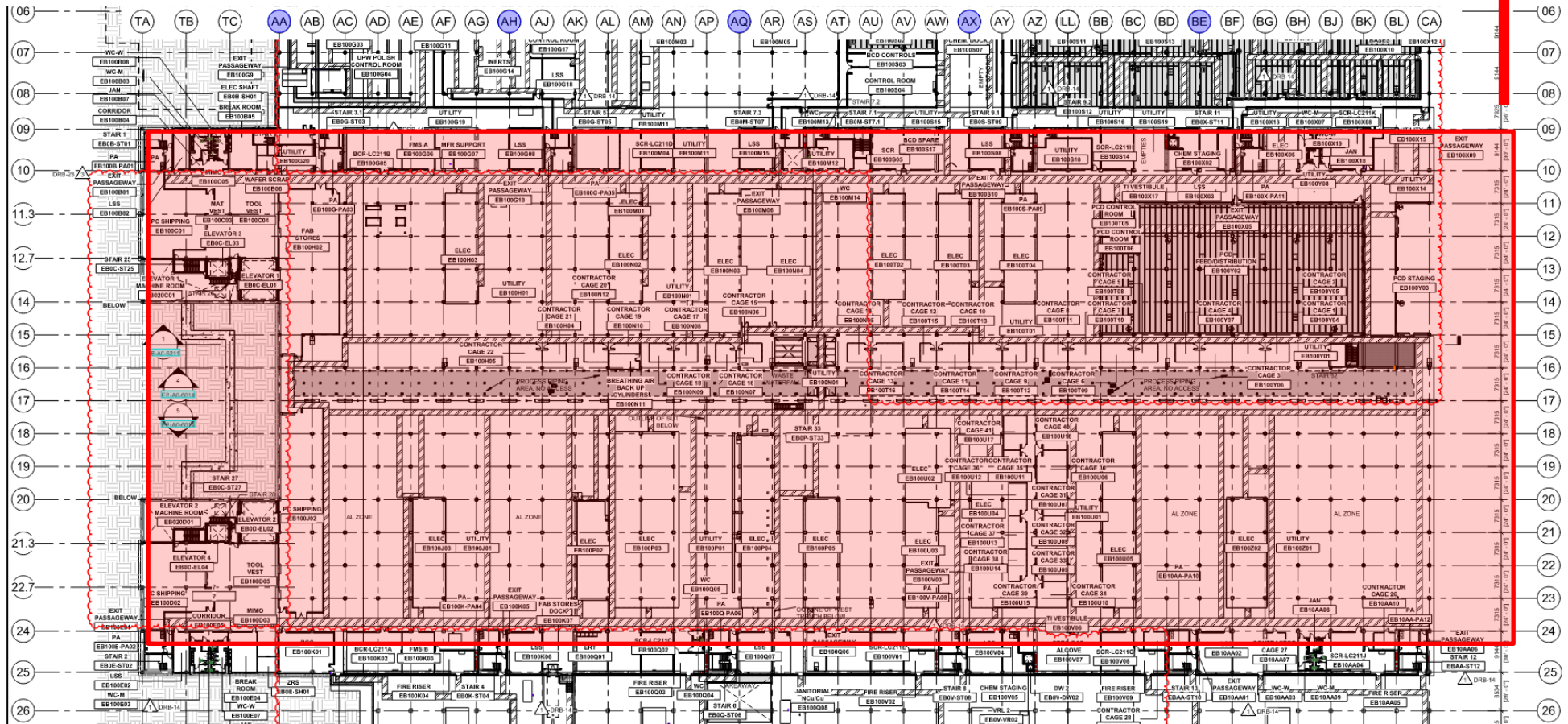
General Topics:

- **Maintain Heightened sense of awareness**



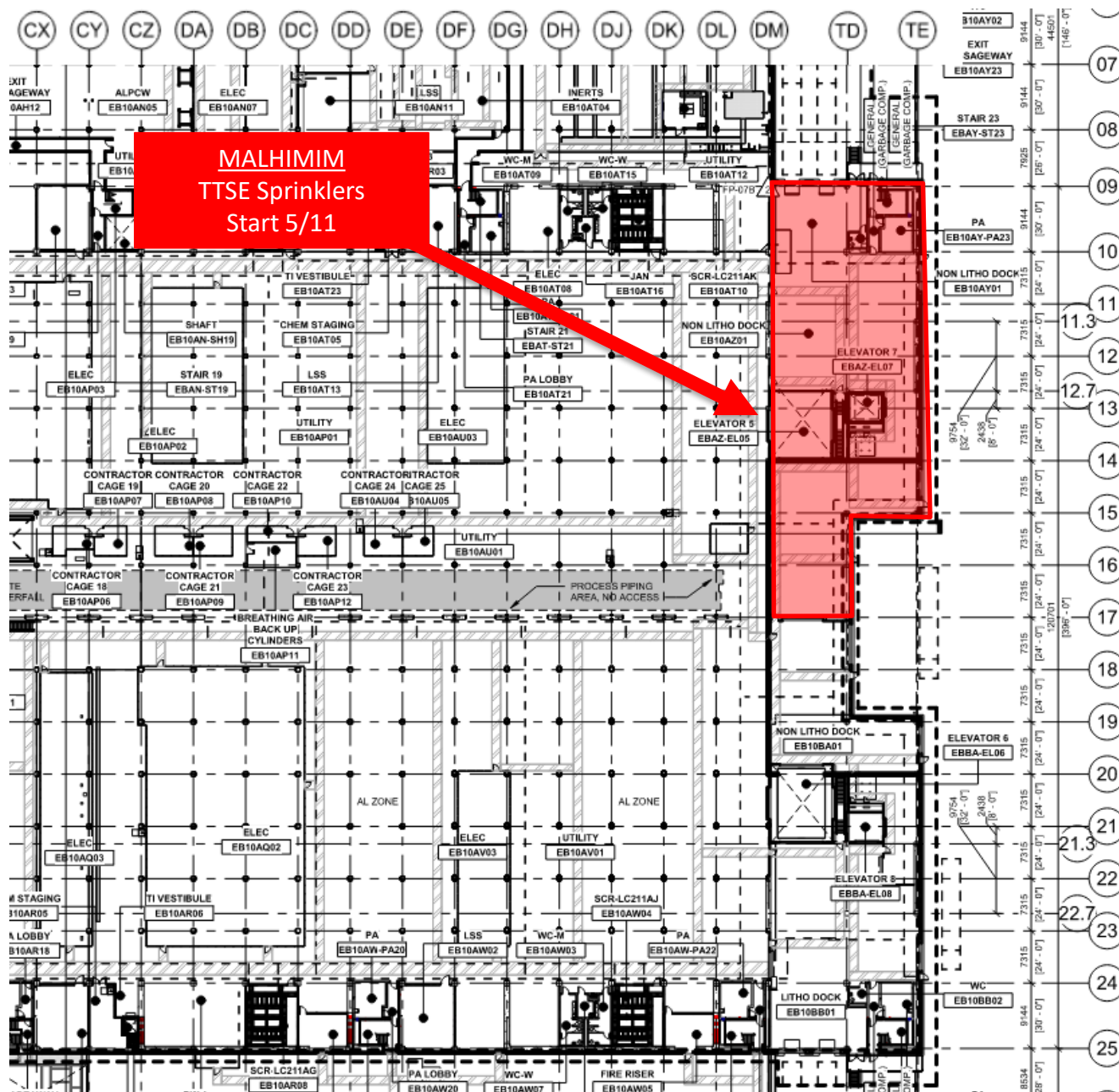
UTILITY LEVEL PRESS TEST

LESICO
Press test OFA UPN212
5/6
19:00 to 5:00



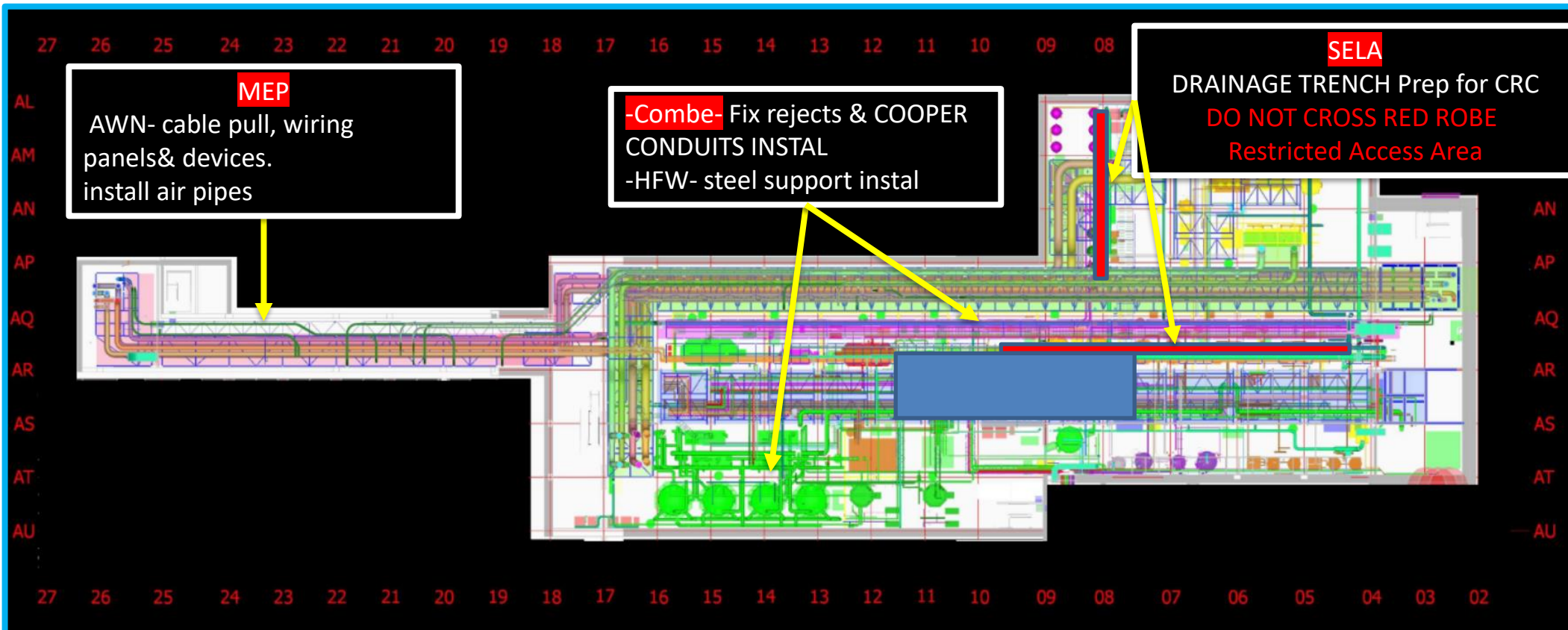
[illegible]

UTILITY LEVEL MOD2

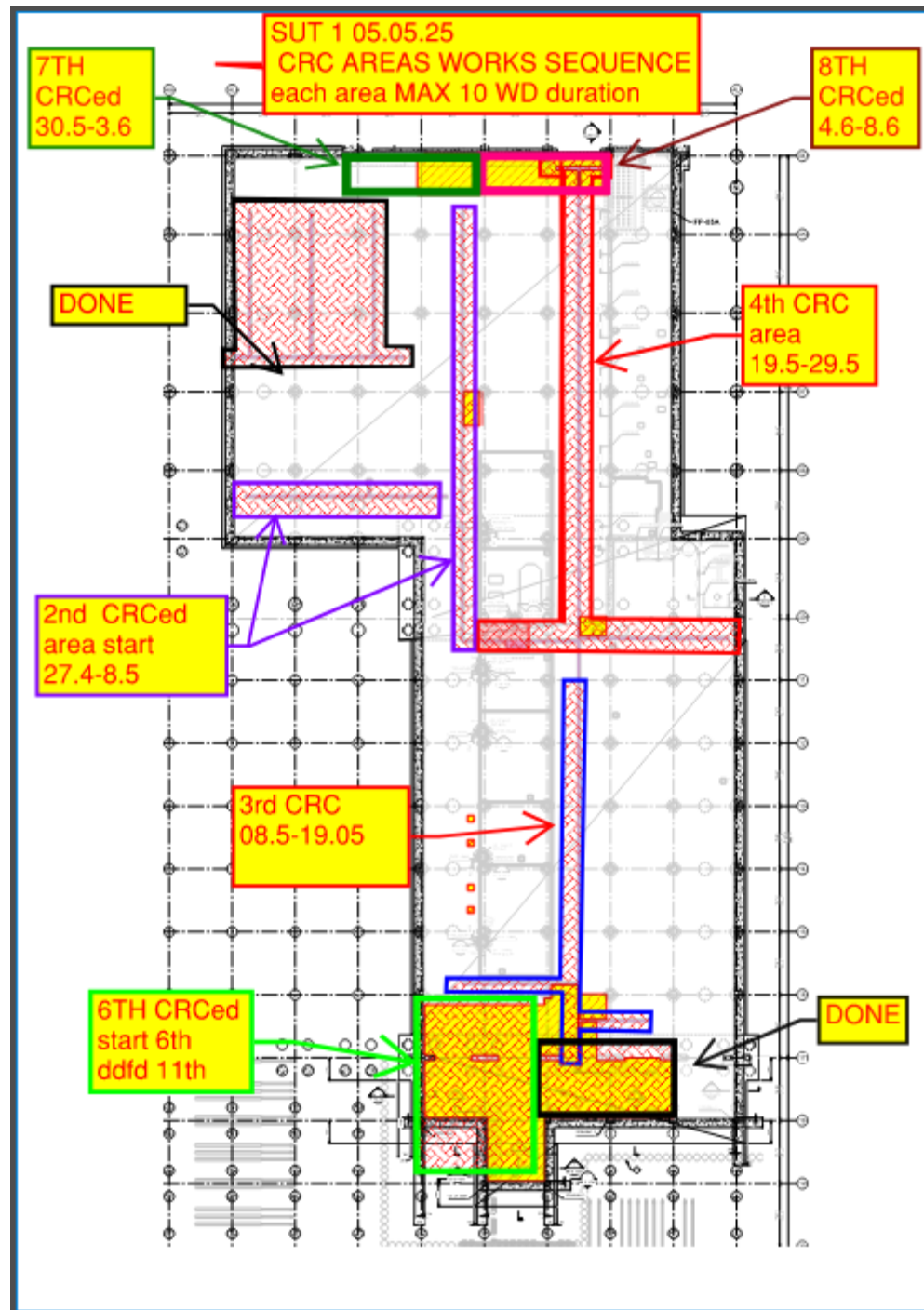




SUT 38.1 LEVEL







SUT 1 CRC sequence & duration

Area No	start date	completion date
1		done
2	27.4	8.5
3	8.5	19.5
4	19.5	29.5
5	23.4	27.4
6	28.4	1.5
7	1.6	3.6
8	4.6	8.6

complete all crc works at sut 1
date is 08.06.2025

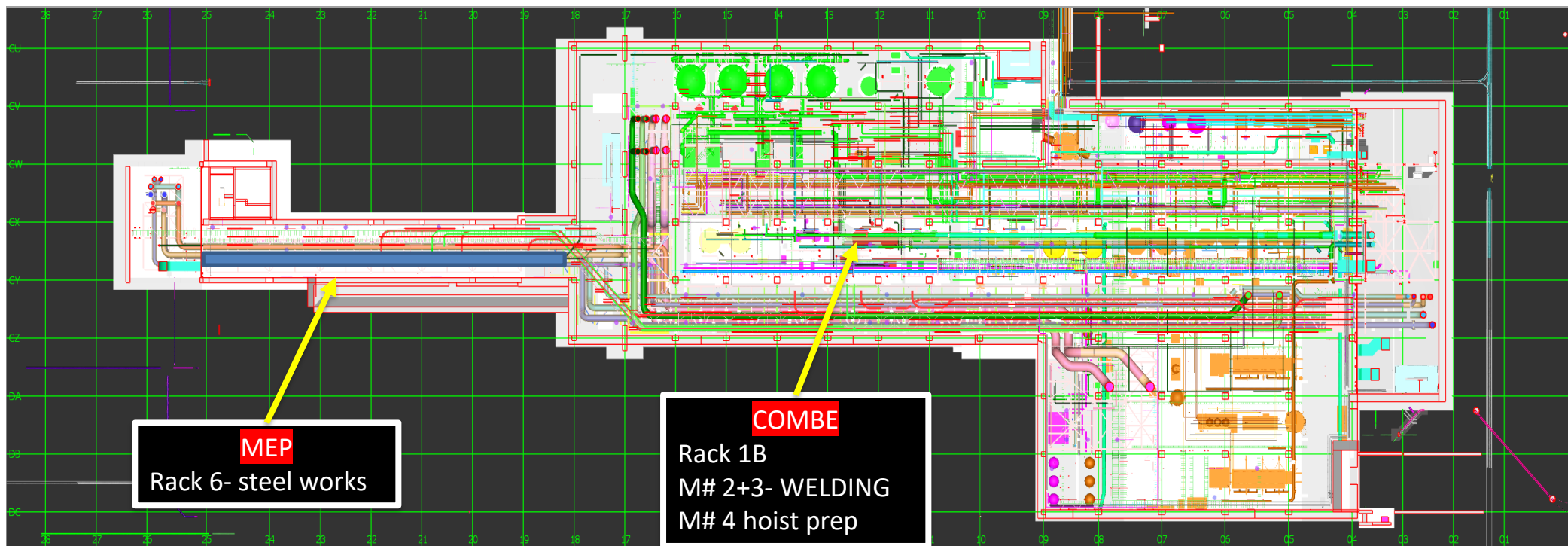


HYG

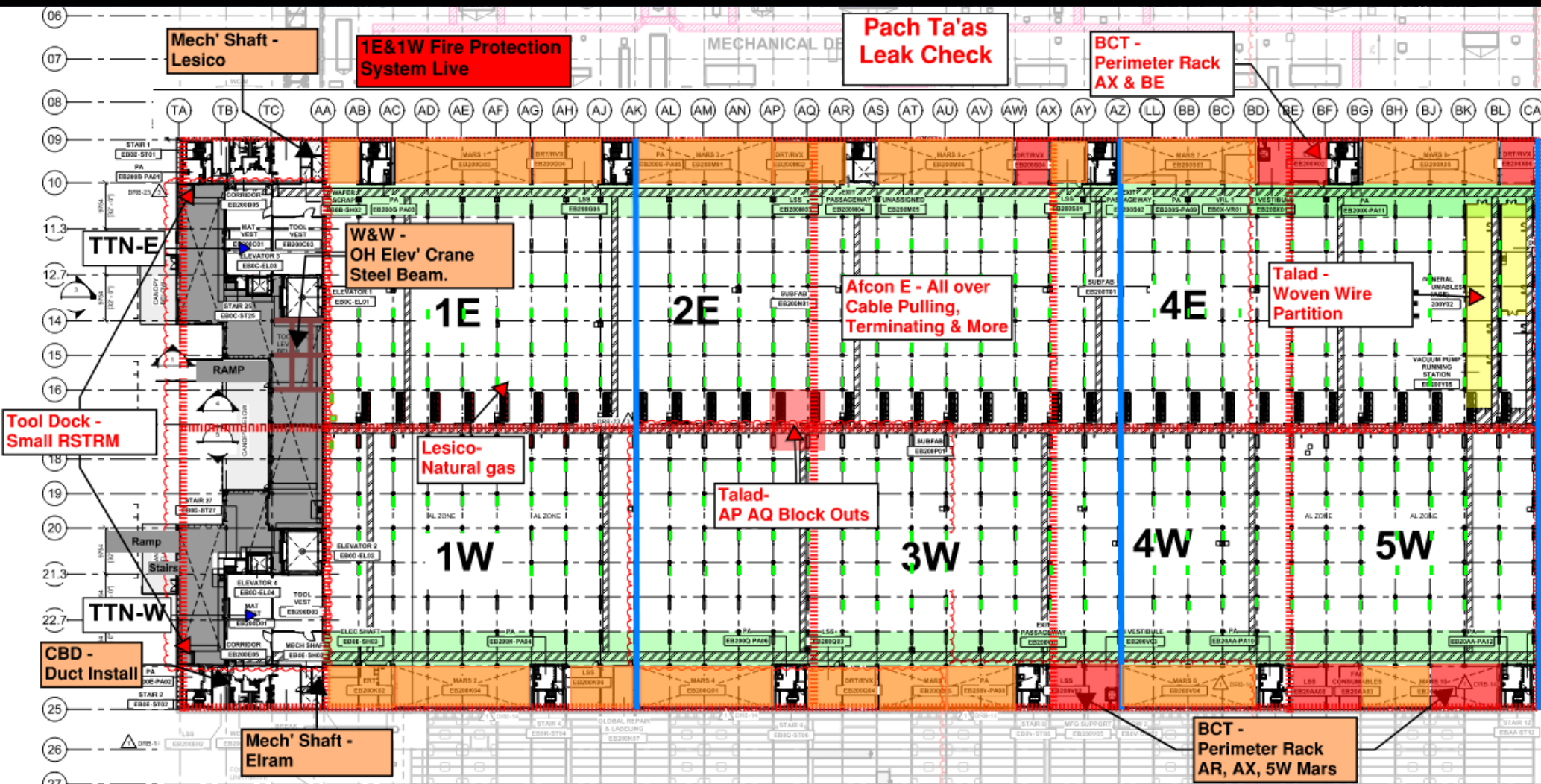
**IMMEDIATELY GRID INSTALL for
each area after CRC completion**



SUT 38.2 LEVEL



SUBFAB BUILDOUT MOD 1



BCT Pressure Test Tomorrow

BCT Pneumatic Pressure Test
May 07 10:00-11:00
OFA, UN2, LPO2
2", 3", 4"

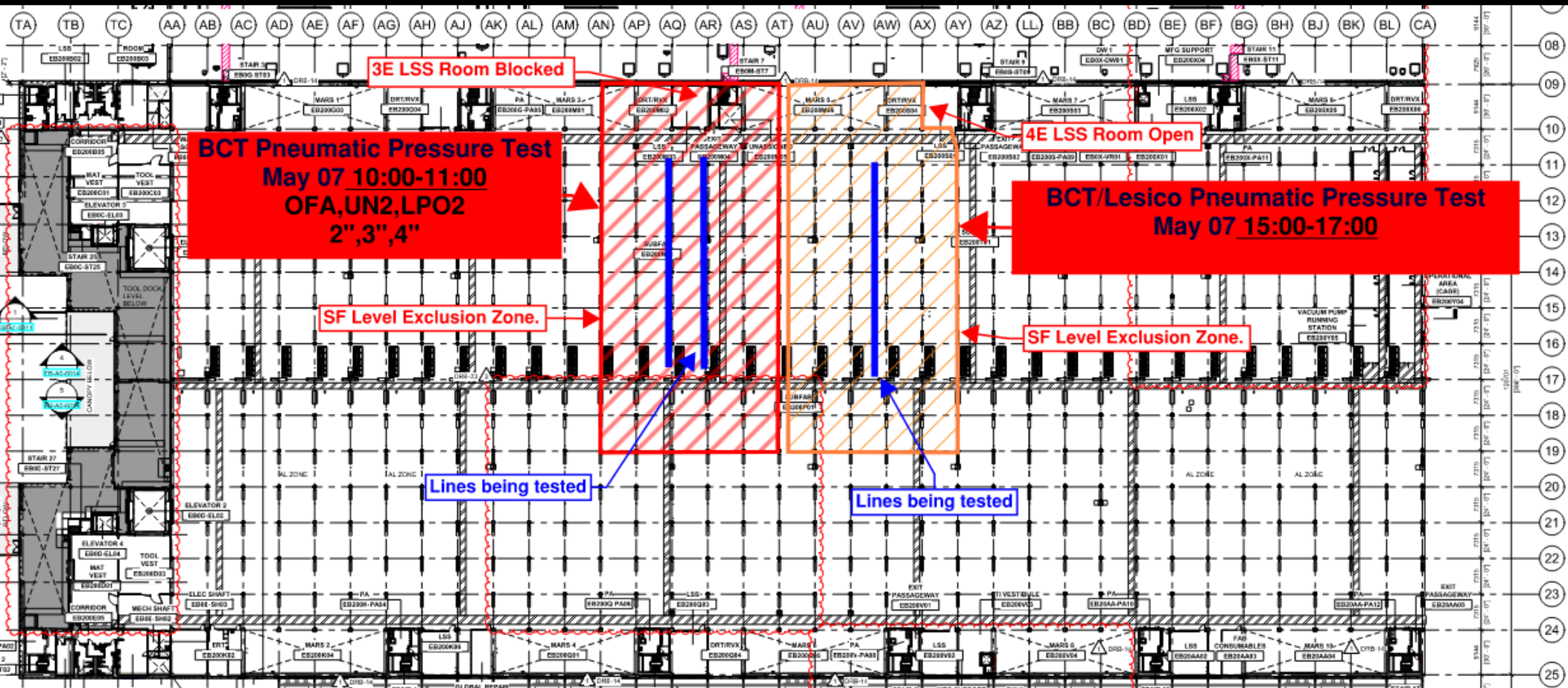
BCT/Lesico Pneumatic Pressure Test
May 07 15:00-17:00

3E LSS Room Blocked

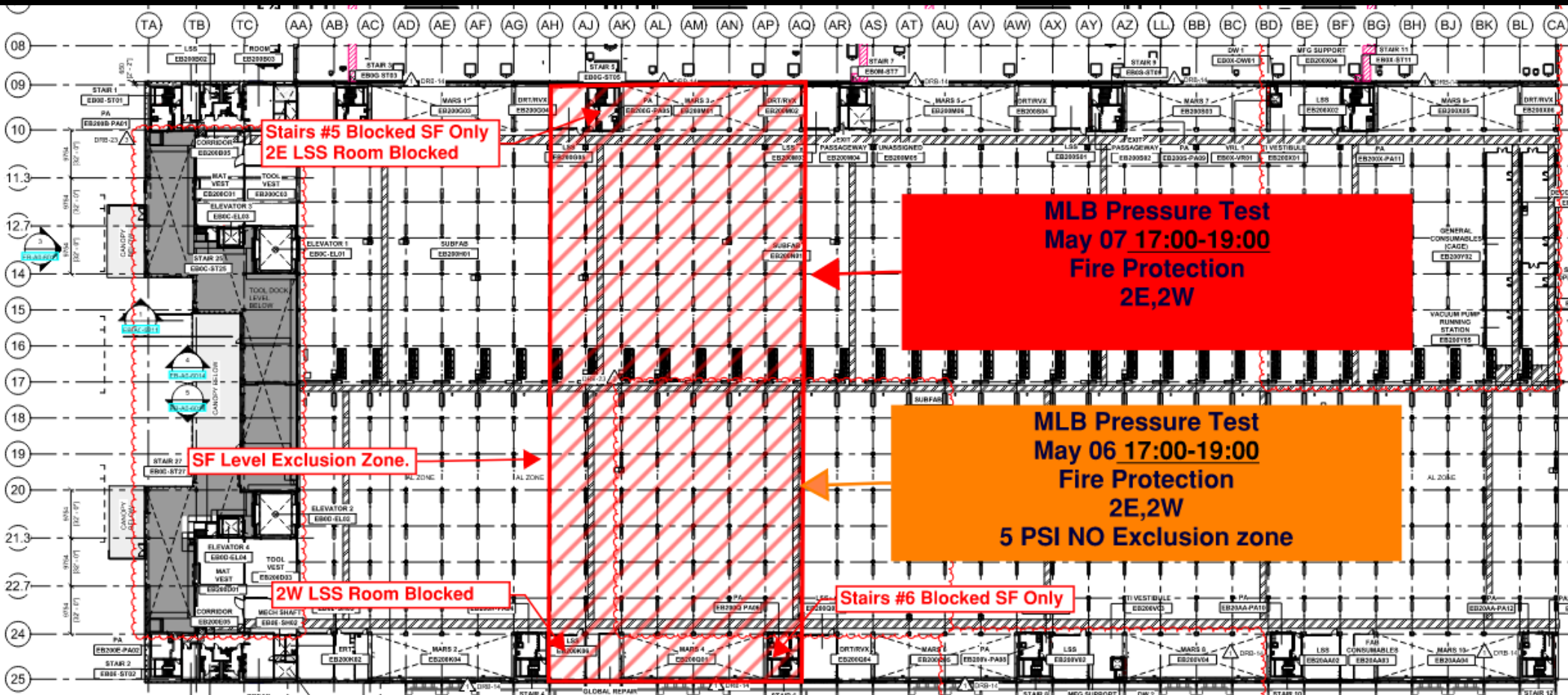
4E LSS Room Open

SF Level Exclusion Zone.

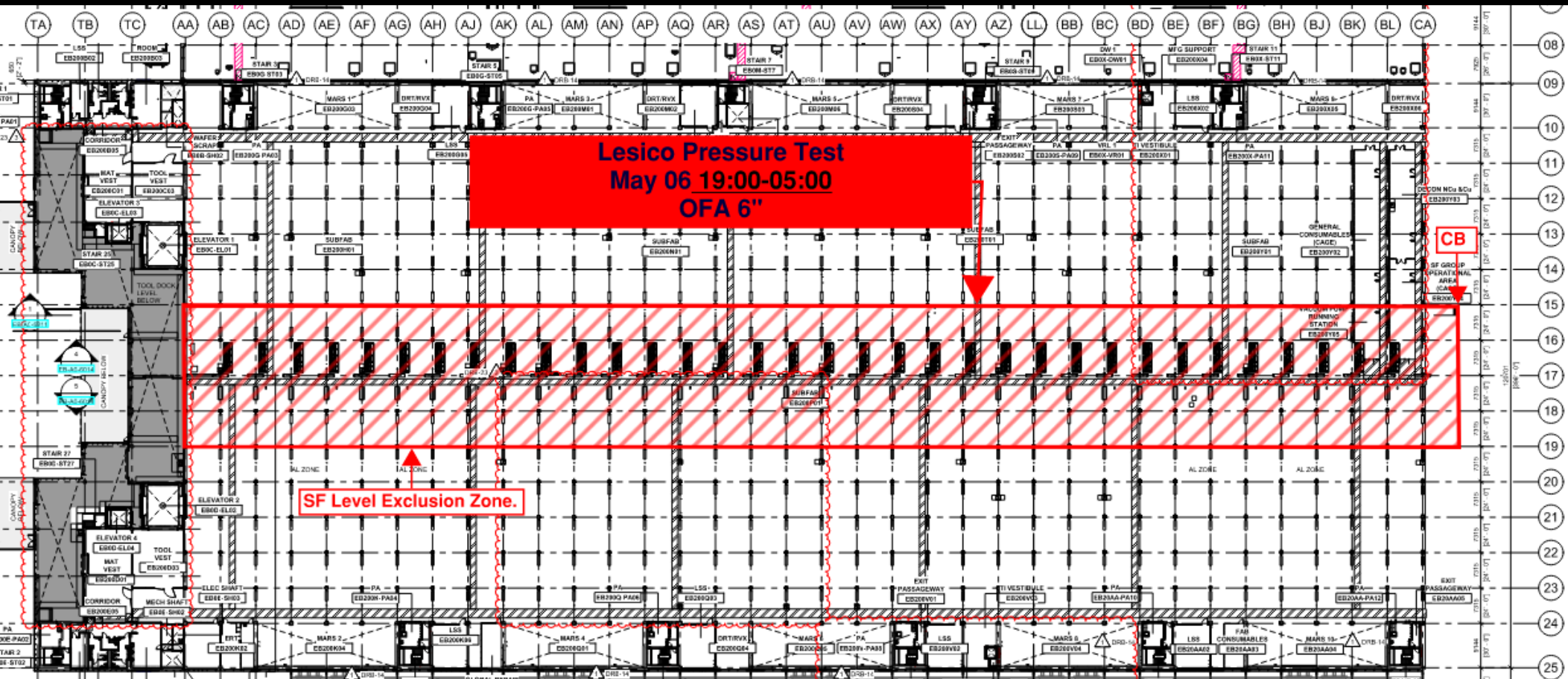
Lines being tested



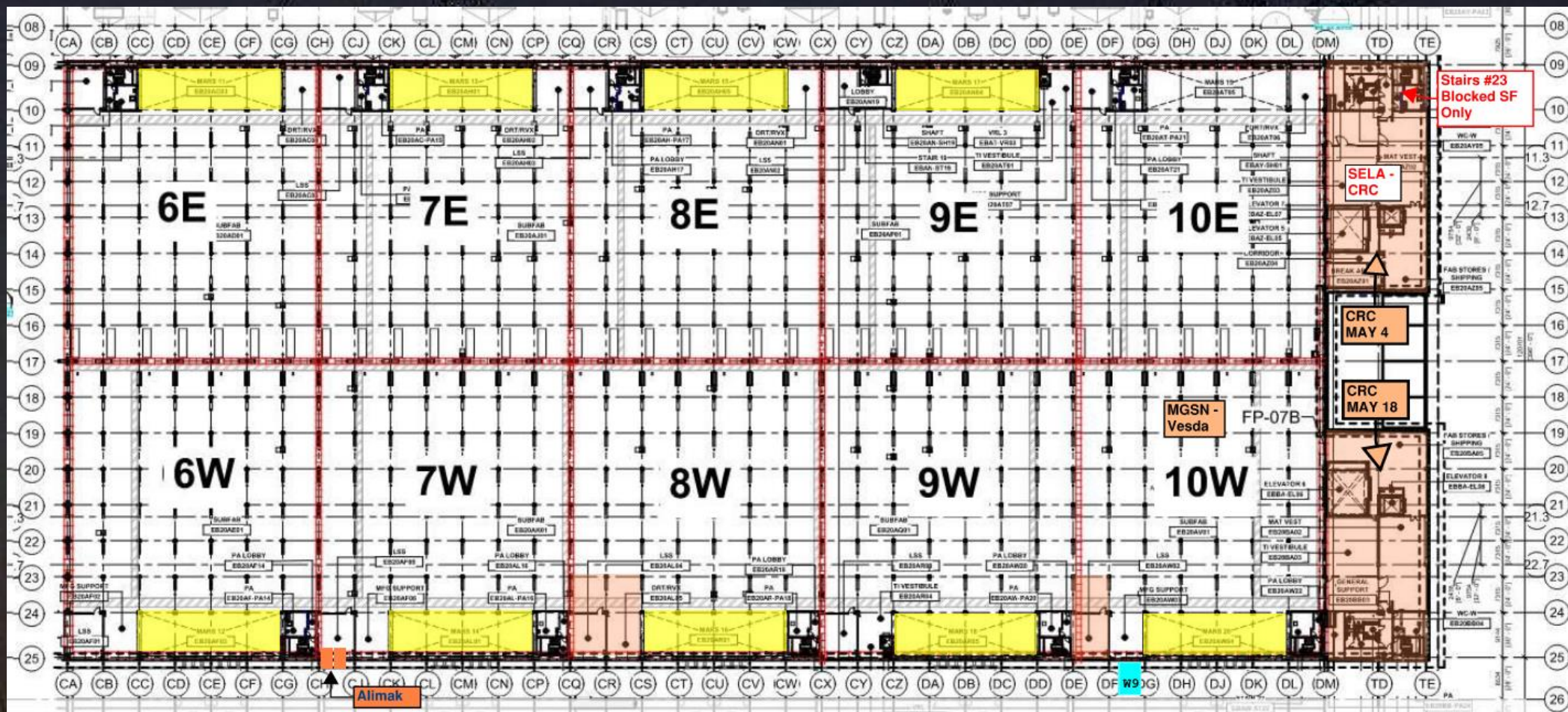
MLB Pressure Test Today & Tomorrow

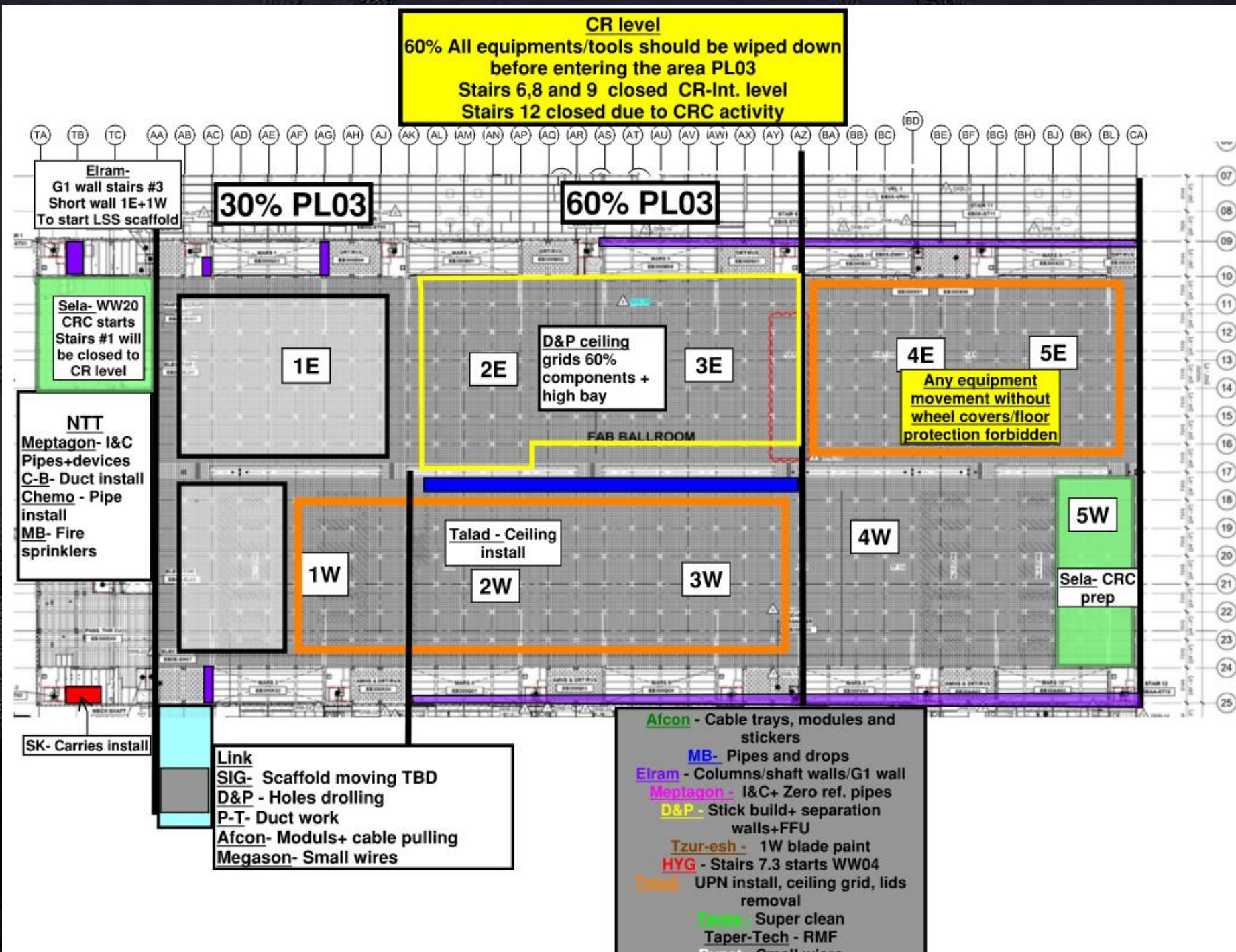
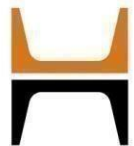


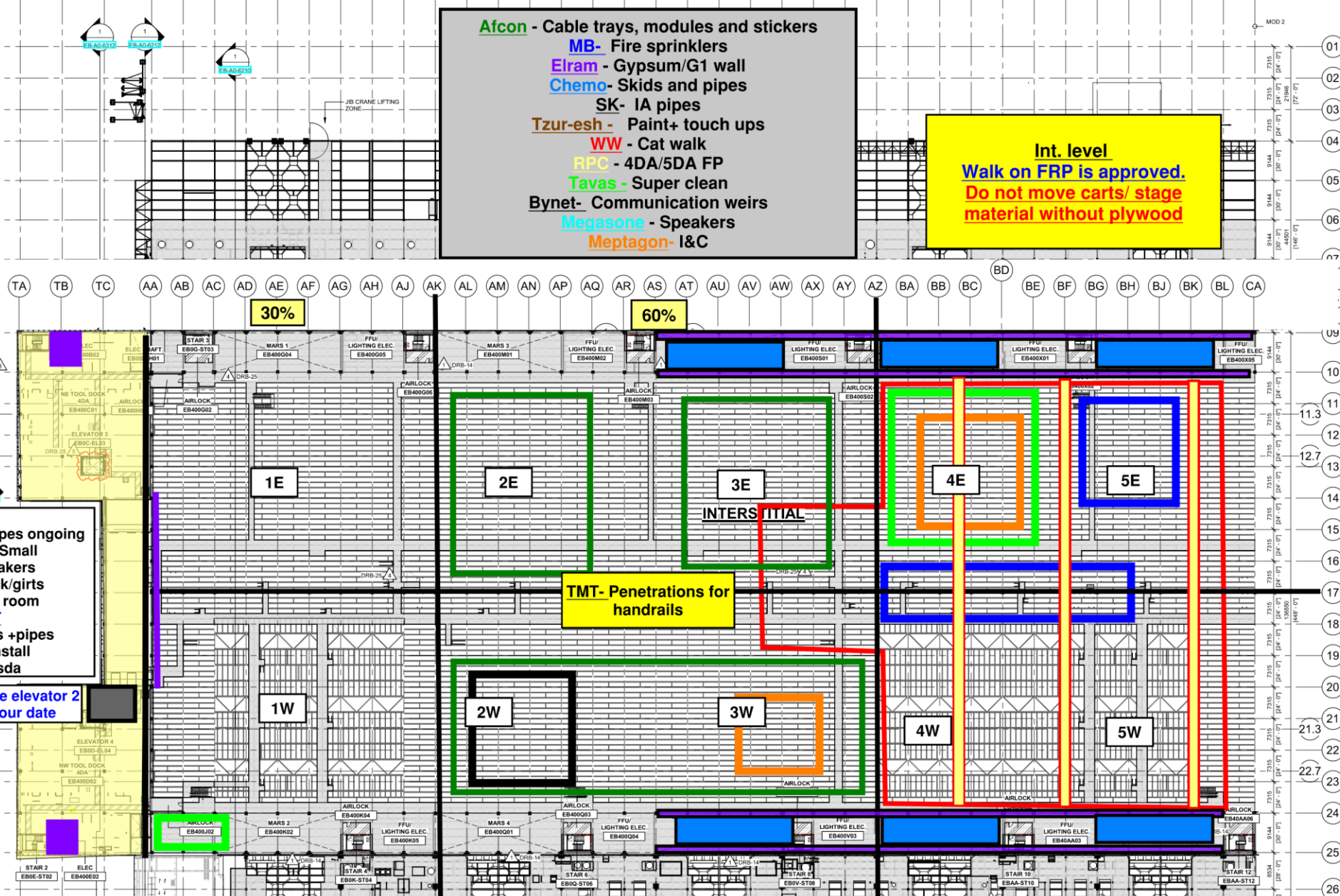
Lesico Pressure Test Today

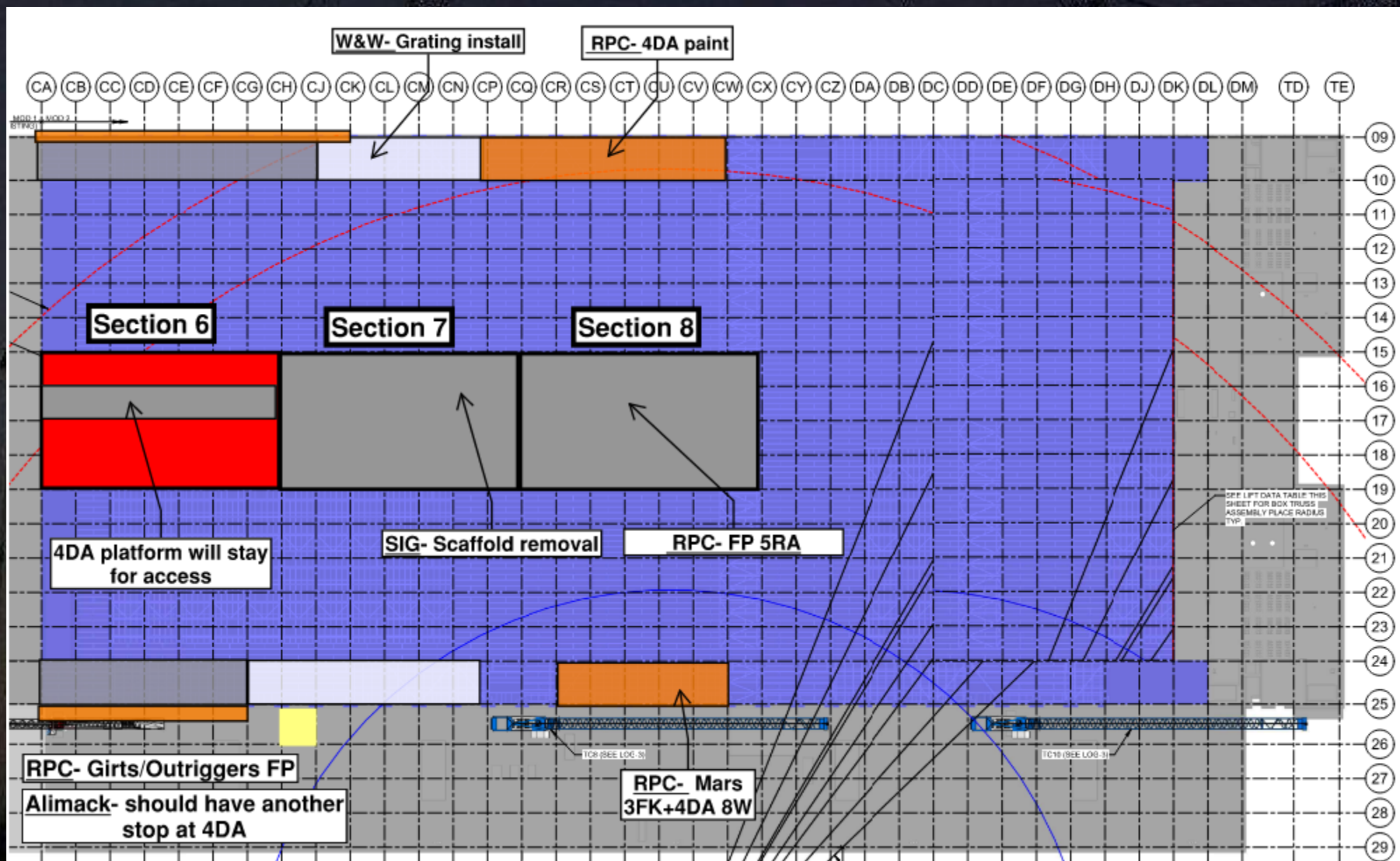
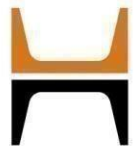


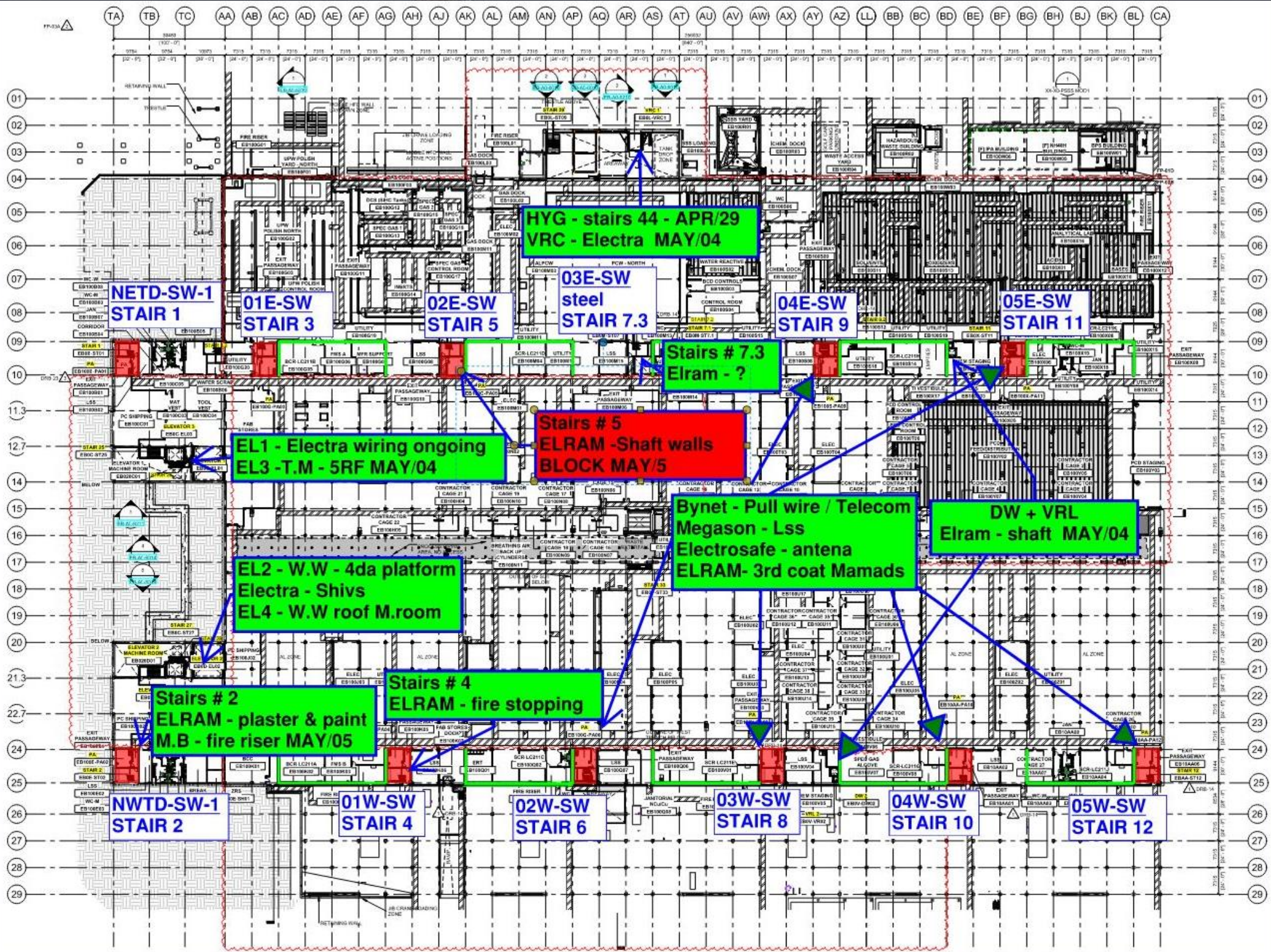
SUBFAB BUILDOUT MOD 2











NETD-SW-1
STAIR 1

01E-SW
STAIR 3

02E-SW
STAIR 5

03E-SW
steel
STAIR 7.3

04E-SW
STAIR 9

05E-SW
STAIR 11

HYG - stairs 44 - APR/29
VRC - Electra MAY/04

Stairs # 7.3
Elram - ?

Stairs # 5
ELRAM - Shaft walls
BLOCK MAY/5

EL1 - Electra wiring ongoing
EL3 - T.M - 5RF MAY/04

EL2 - W.W - 4da platform
Electra - Shivs
EL4 - W.W roof M.room

Bynet - Pull wire / Telecom
Megason - Lss
Electrosafe - antenna
ELRAM - 3rd coat Mamads

DW + VRL
Elram - shaft MAY/04

Stairs # 2
ELRAM - plaster & paint
M.B - fire riser MAY/05

Stairs # 4
ELRAM - fire stopping

NWTD-SW-1
STAIR 2

01W-SW
STAIR 4

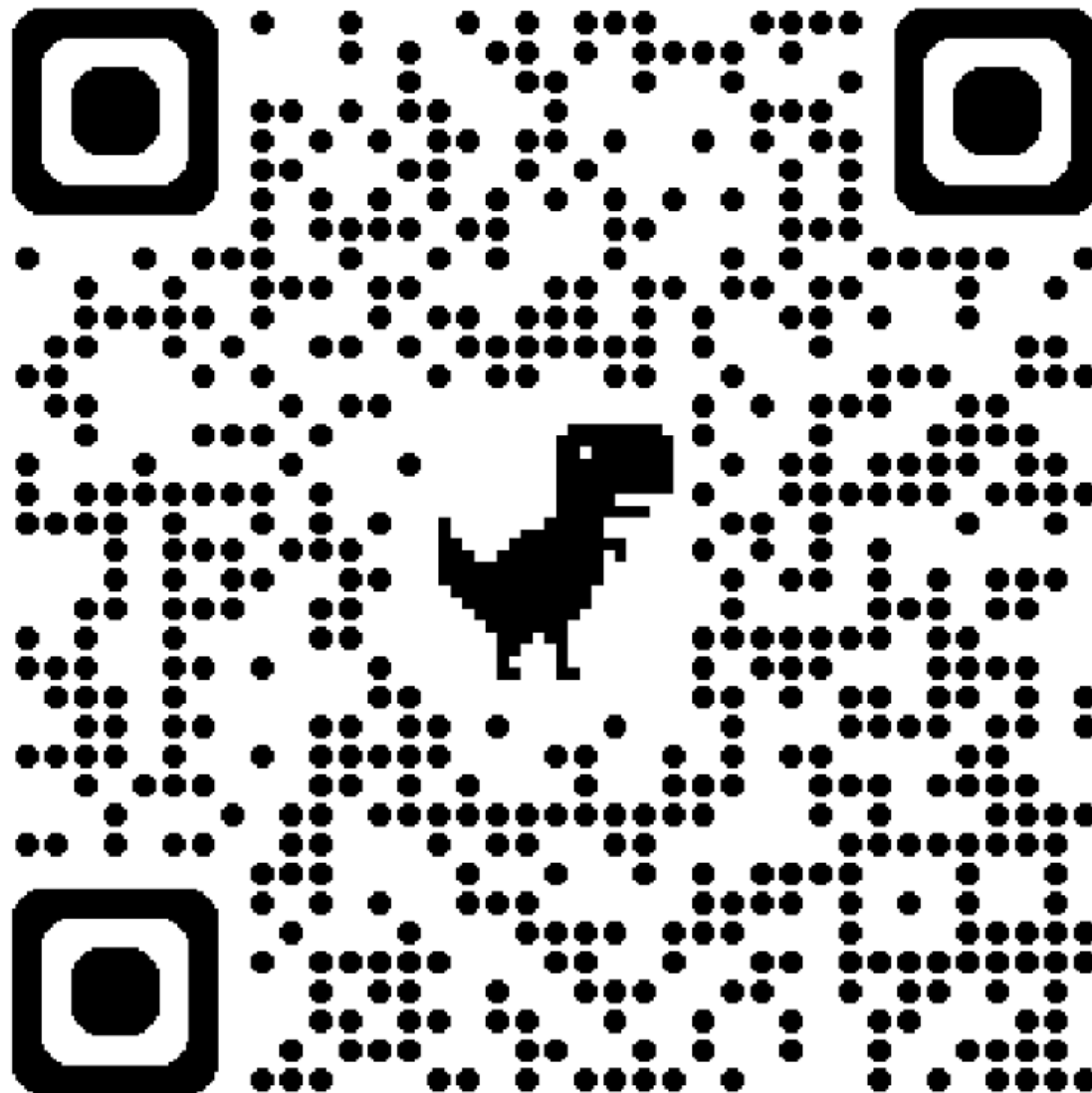
02W-SW
STAIR 6

03W-SW
STAIR 8

04W-SW
STAIR 10

05W-SW
STAIR 12

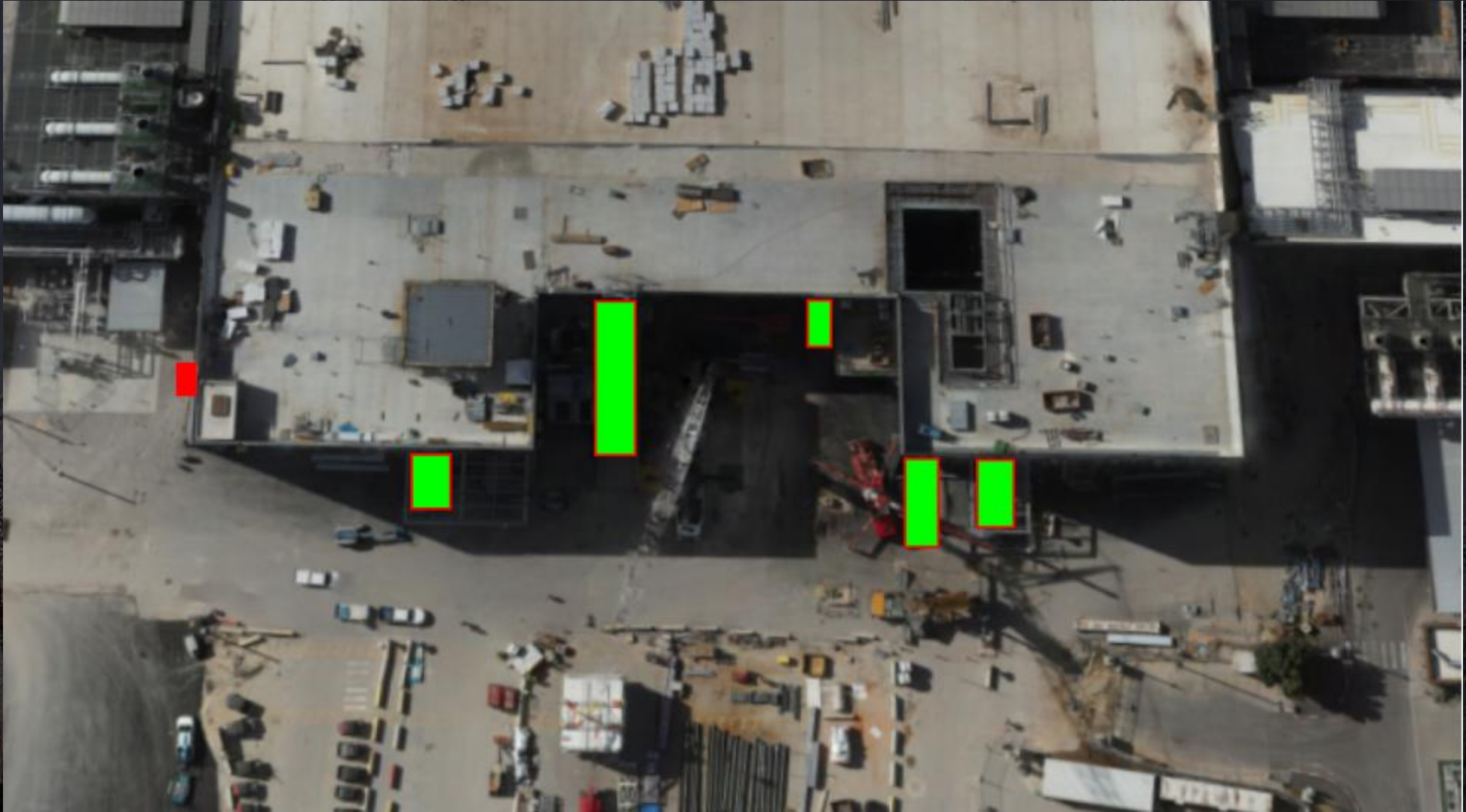
Request Form

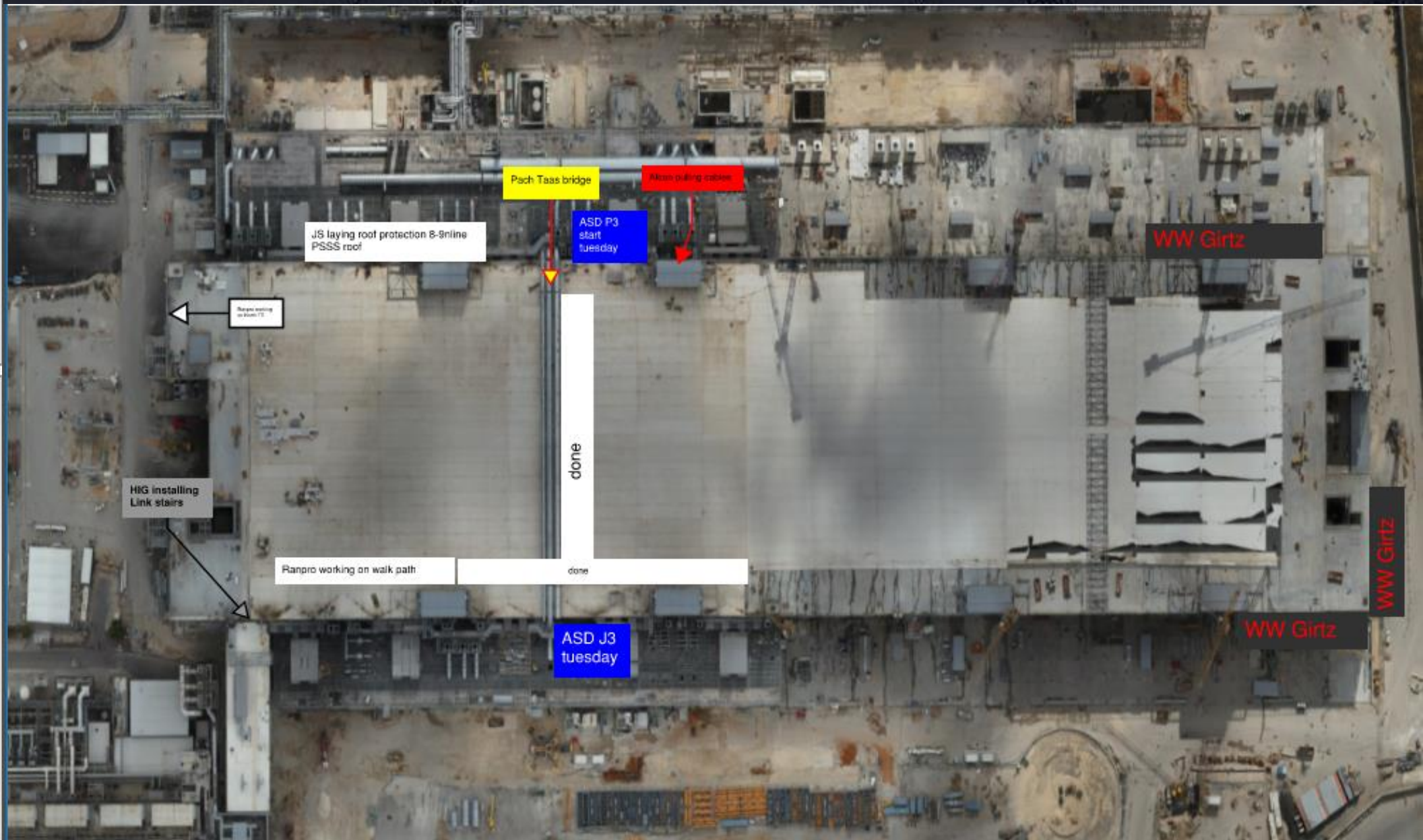


Subcontractor must fill out and submit all required cells in order to get a penetration cut through the siding.



HOFFMAN CONSTRUCTION COMPANY

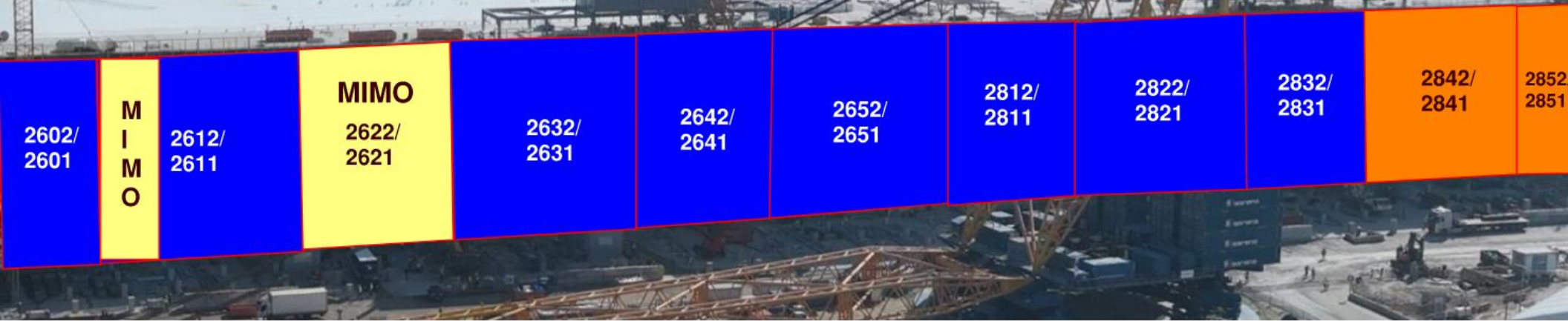






- READY FOR GIRTS 
- INSTALLING GIRTS 
- READY FOR PANELS 
- PANELS INSTALLED 

MOD 2 WESTSIDE GIRTS/SIDING



MOD 2 EASTSIDE GIRTS/SIDING



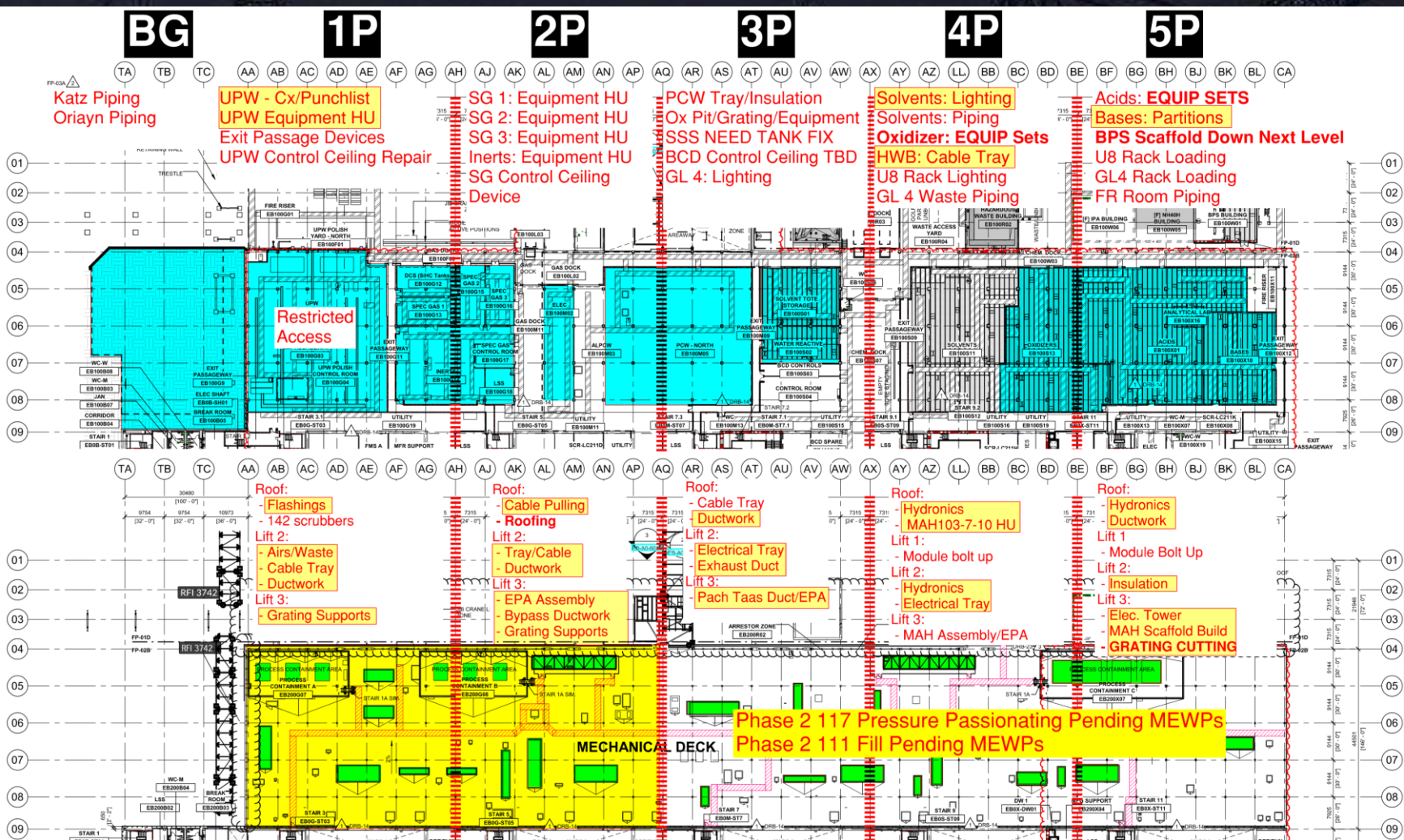
2752/ 2751	2742/ 2741	2732/ 2731	2722/ 2721	2712/ 2711	2552/ 2551	2542/ 2541	2532/ 2531	2522/ 2521	2512/ 2511	2502/ 2501
---------------	---------------	---------------	---------------	---------------	---------------	---------------	---------------	---------------	---------------	---------------

READY FOR GIRTS	
INSTALLING GIRTS	
READY FOR PANELS	
PANELS INSTALLED	

PSSS.1

Utility Level 1YA

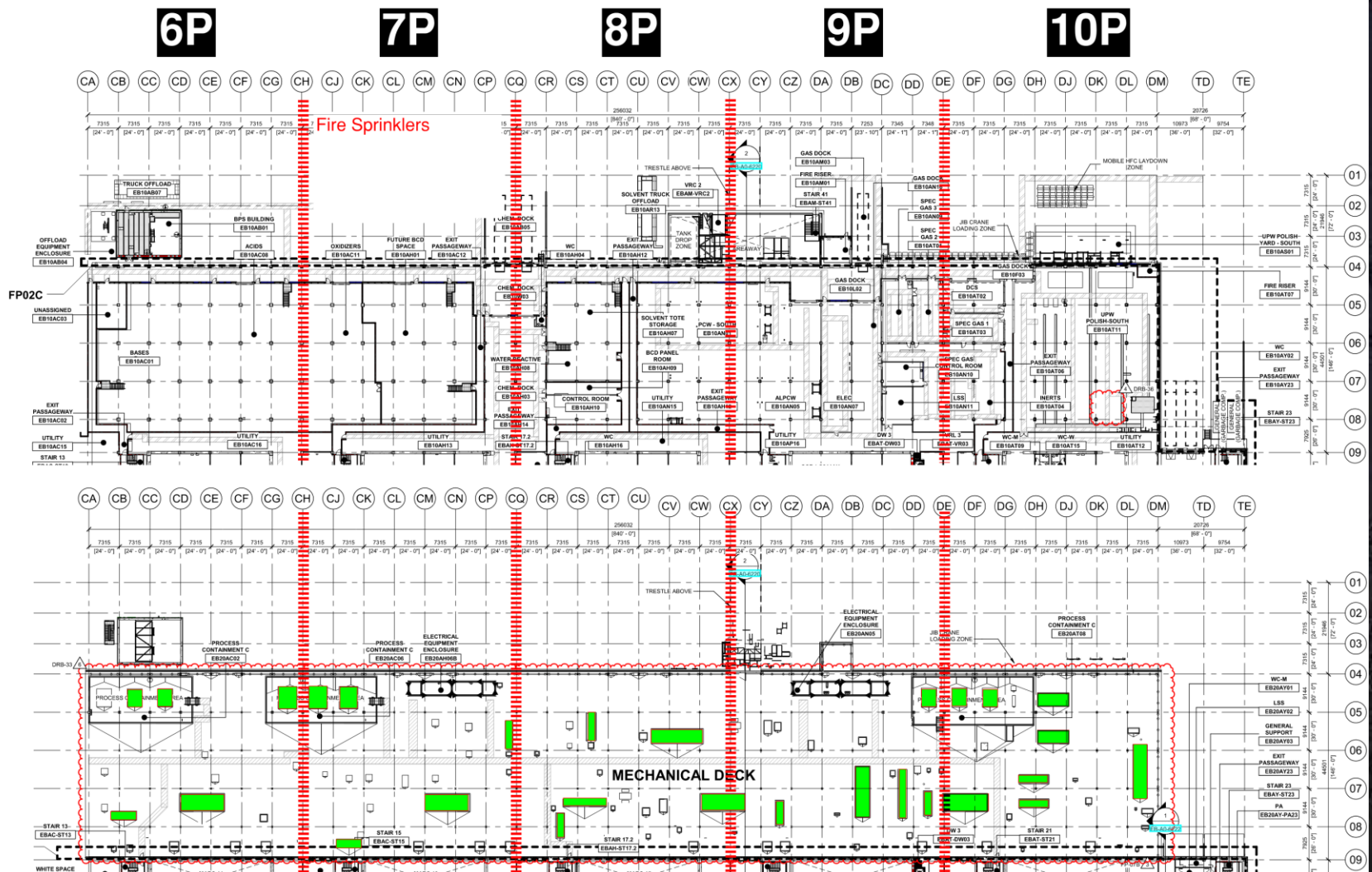
PSSS Roof 2SA



PSSS.2

Utility Level 1YA

PSSS Roof
2SA



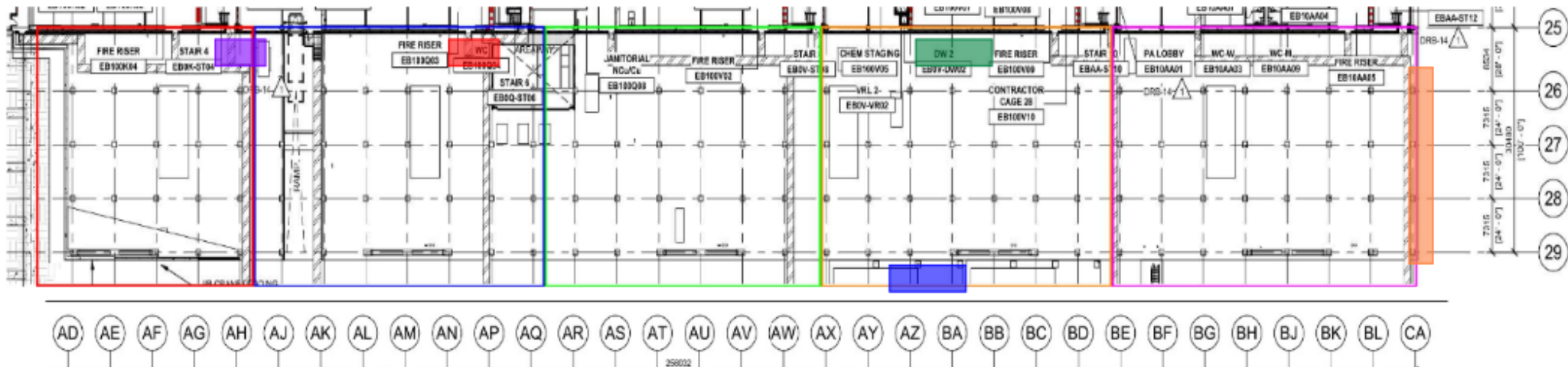


WJG – UL

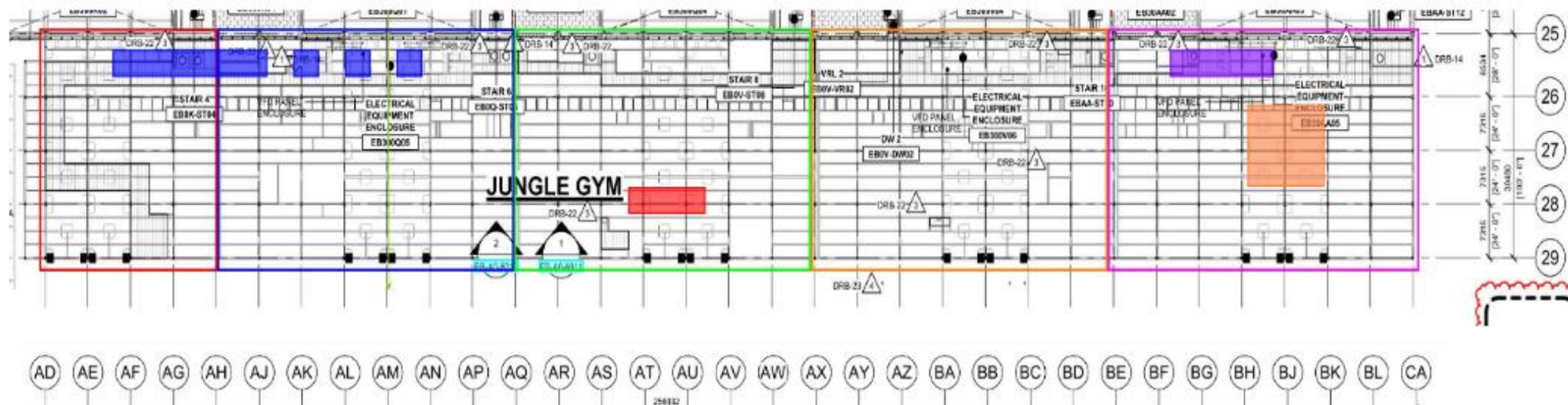
CARMEL BIDUD
scaffolding
erection

CHEMO AHARON
installation

CARMEL BIDUD
up 135 installtion



WJG – Lift 2

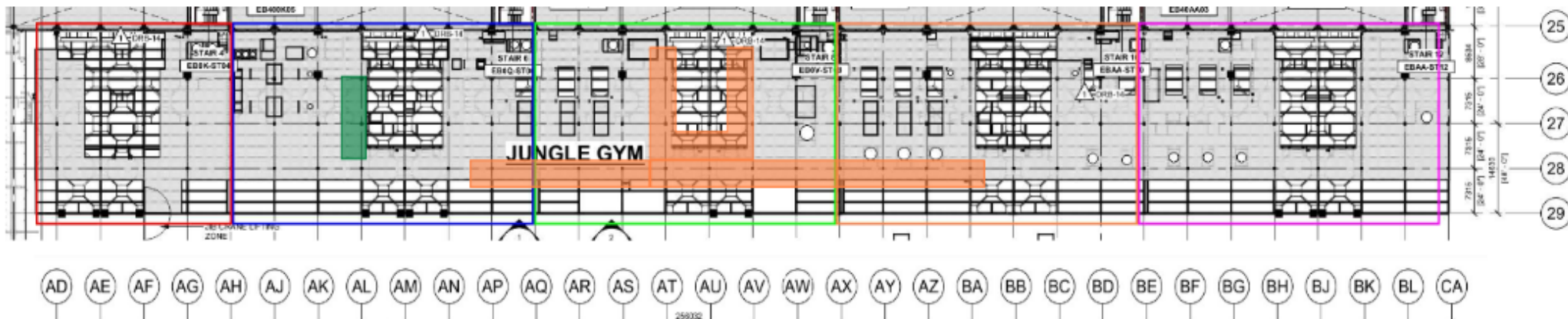


WJG – Lift 3

AA

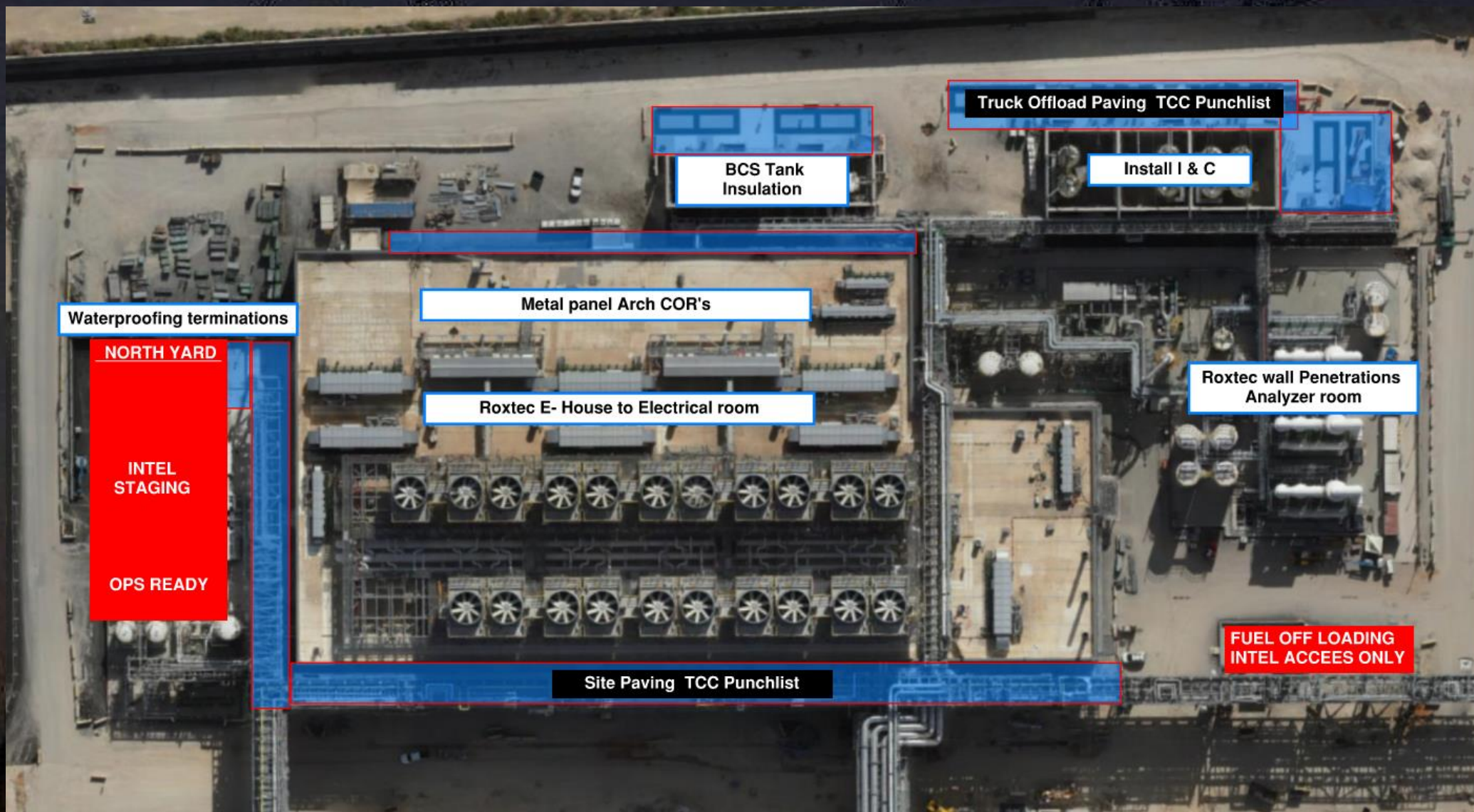
scaffolding erections

Afcon
installation of cable tray
PACH TAAS
EPA platform erection

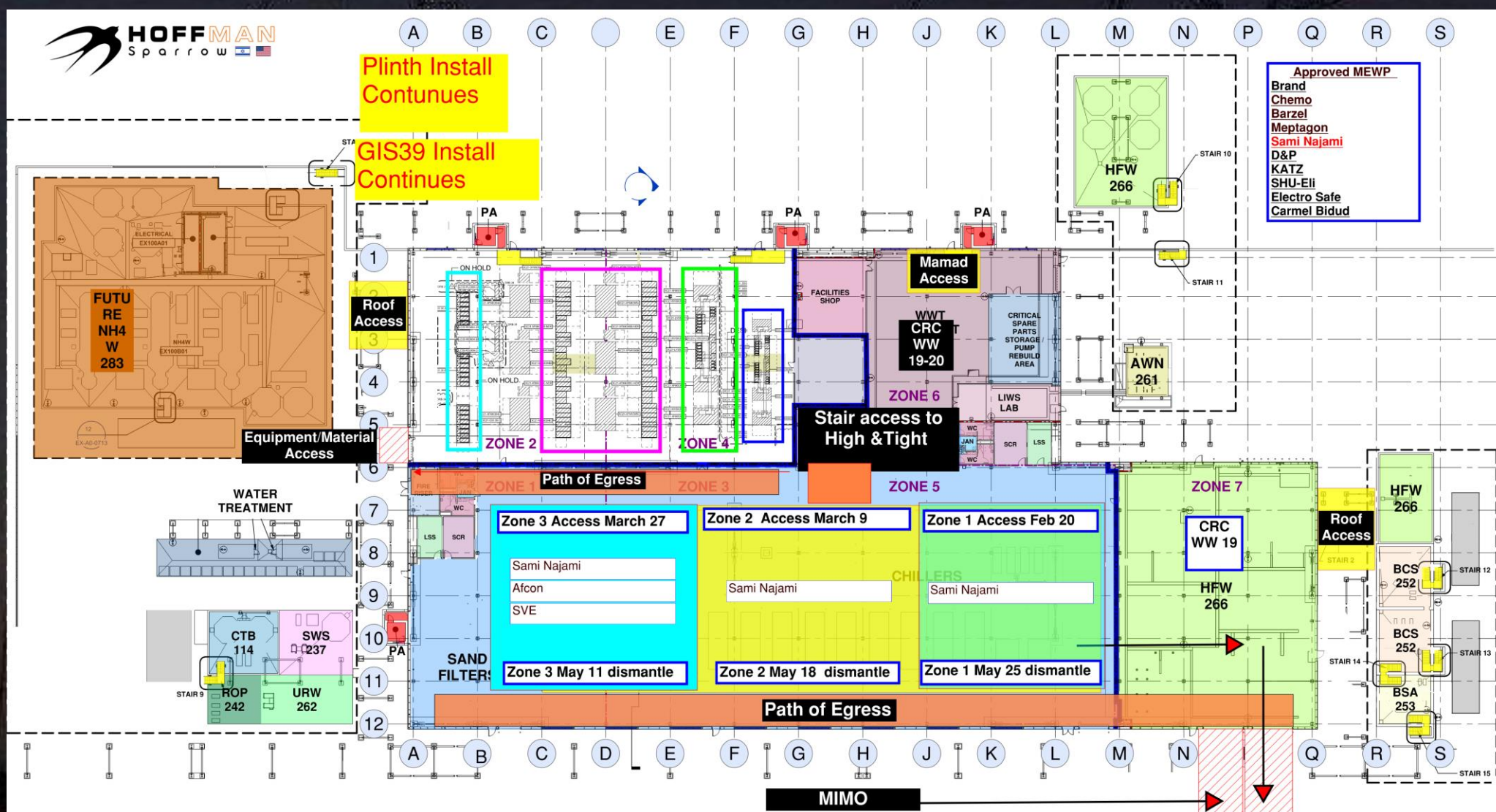


[illegible]

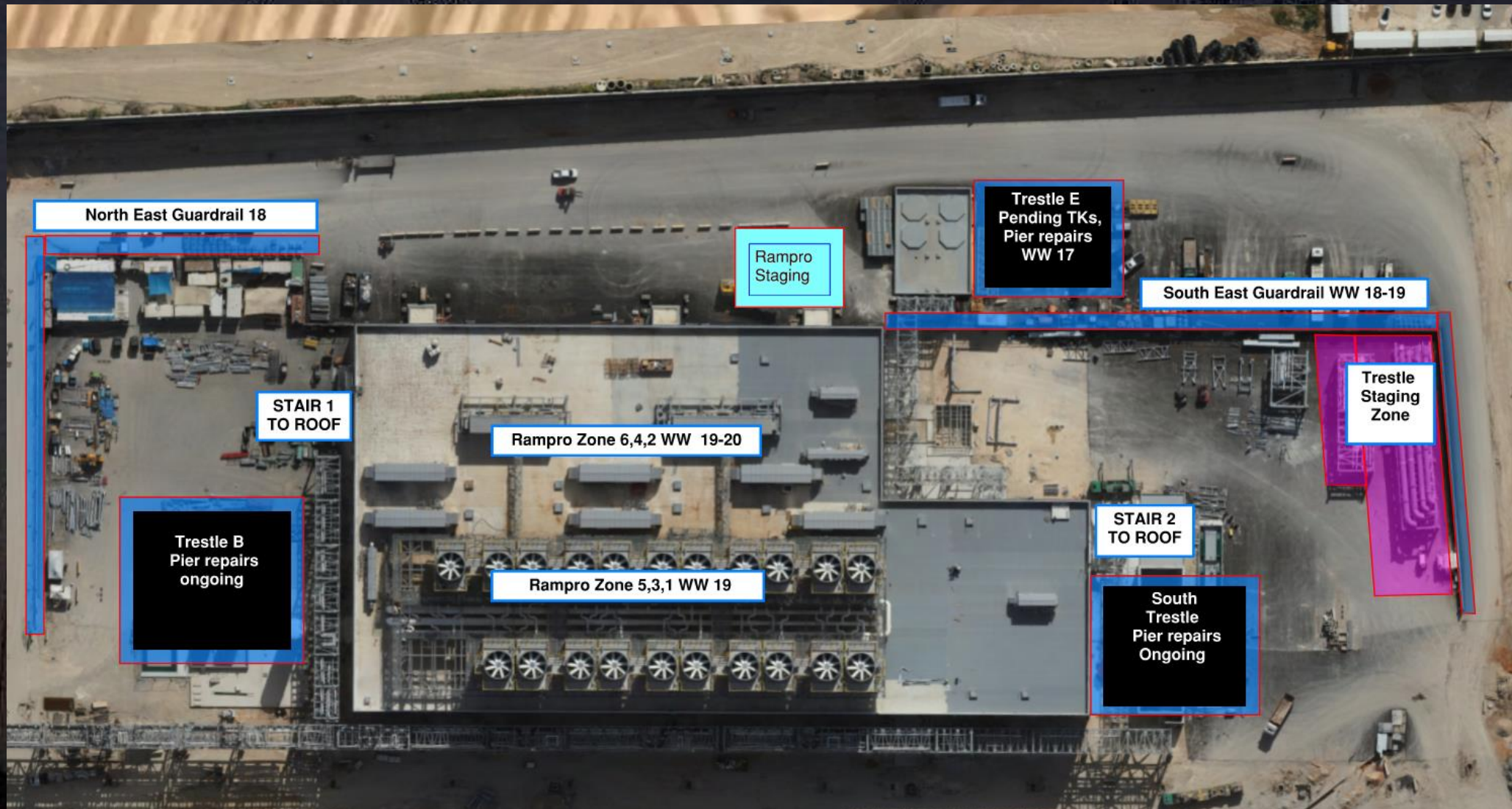
CUB 1 – EXTERIOR/ROOF



CUB 2- Load in & H&T



CUB 2- Trestles/Roof/Guardrails



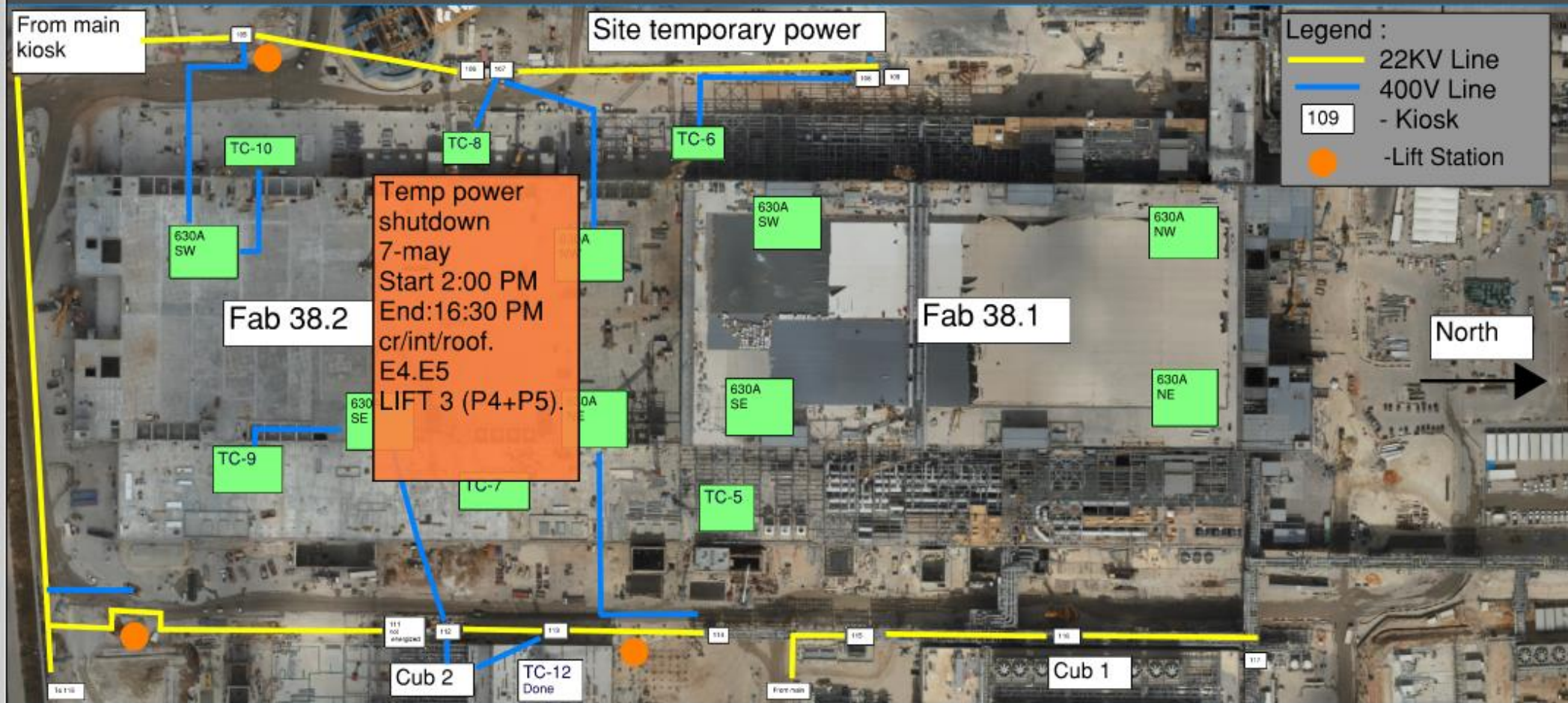


HOFFMAN CONSTRUCTION COMPANY



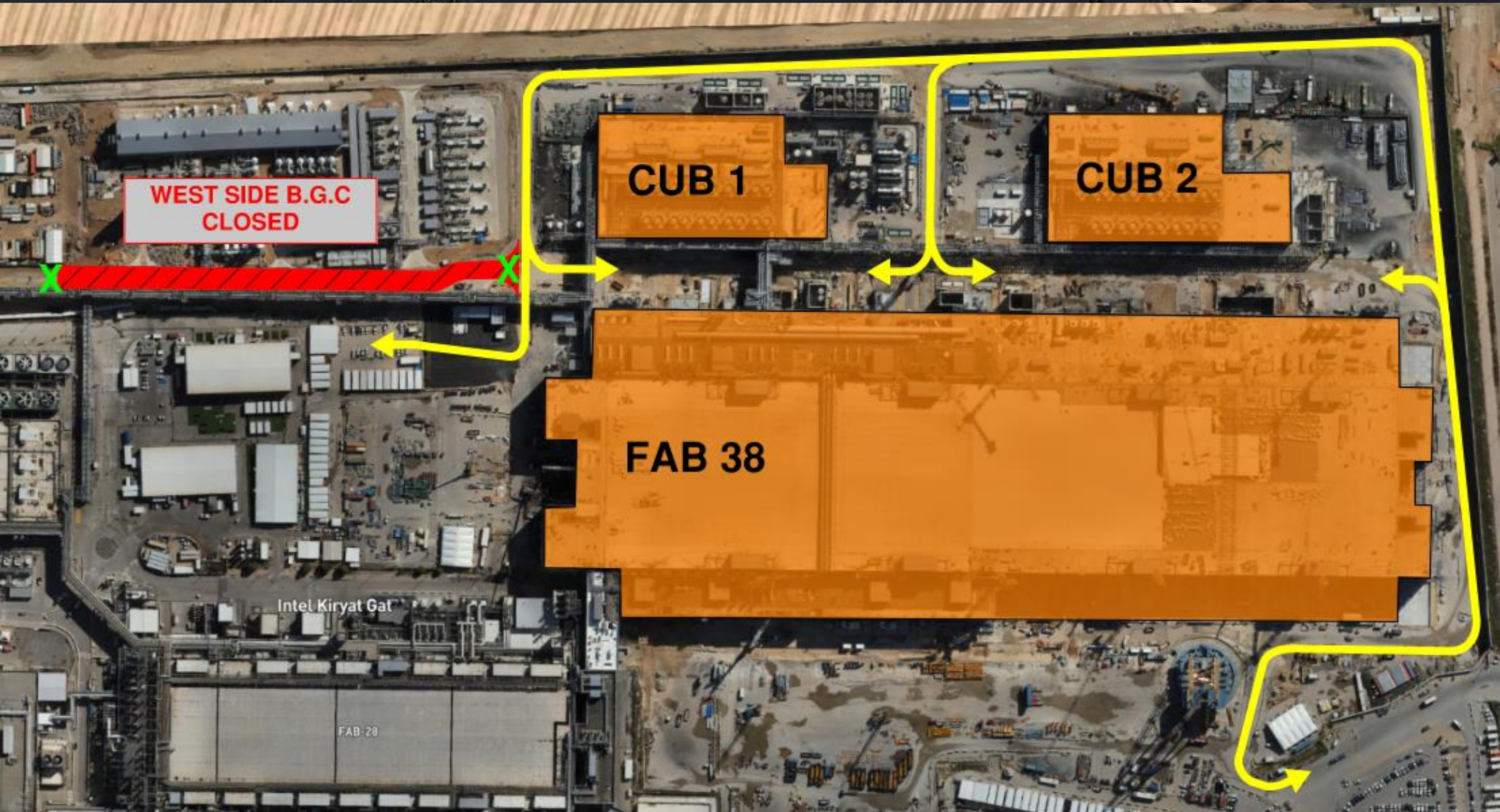


TEMP POWER



Daily Coordination Meeting

Site Logistics



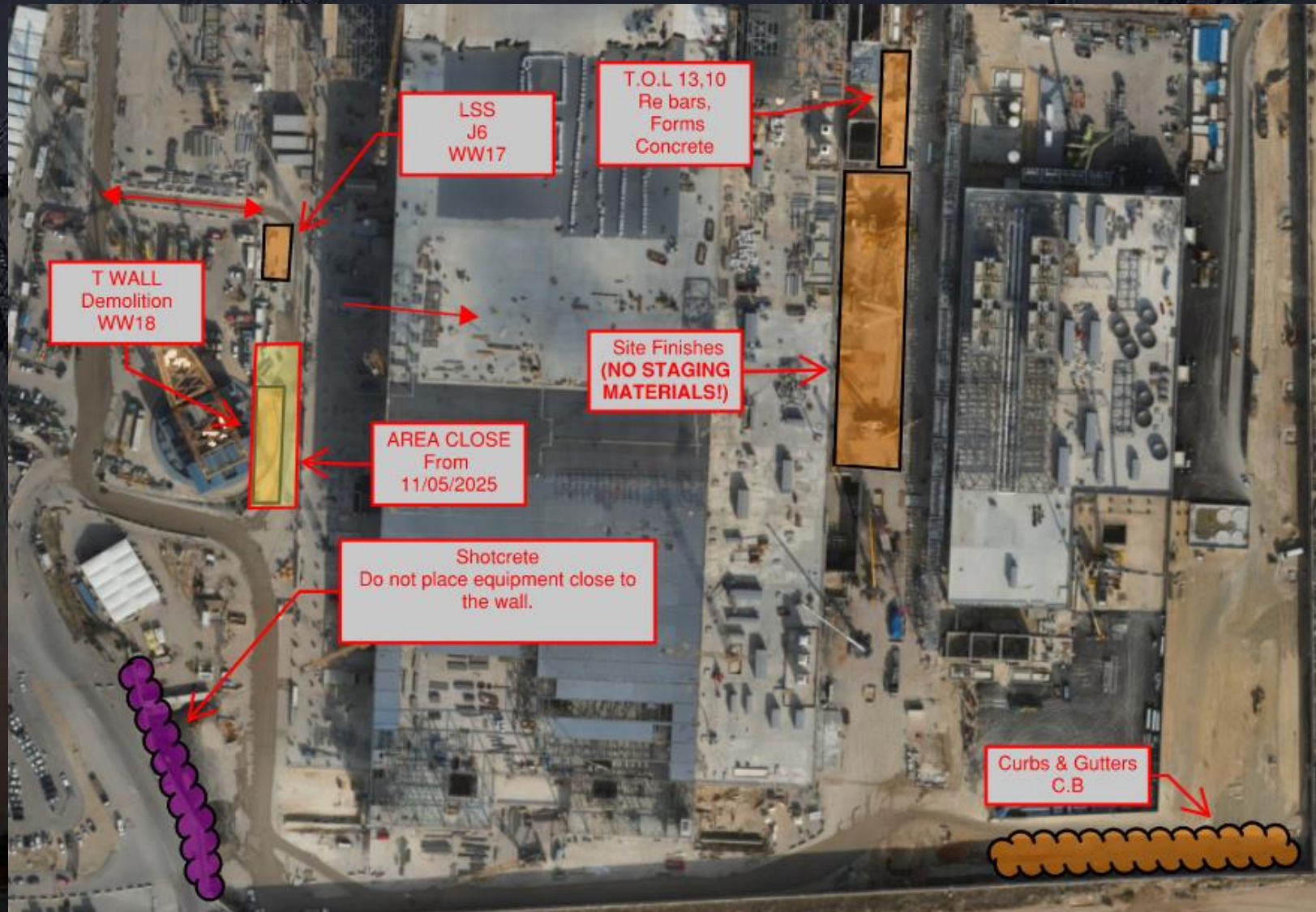
Daily Coordination Meeting

Site Logistics: North



Daily Coordination Meeting

Site Logistics: South



Daily Coordination Meeting

MAMAD Locations

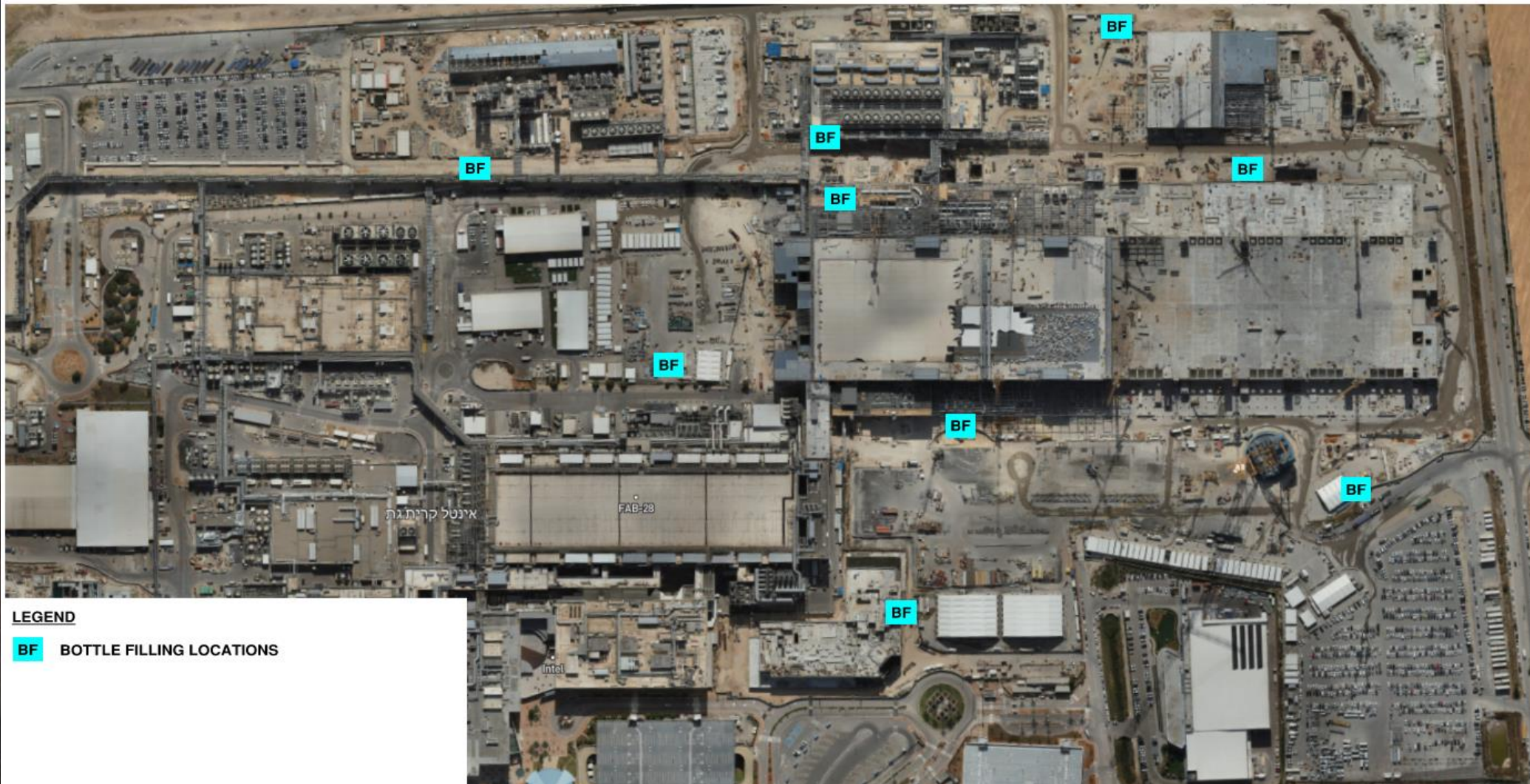
MAMAD LOCATIONS (19-March-2025)
■ LARGE
■ SMALL
■ BUILDING



Daily Coordination Meeting

WATER BOTTLE FILLING STATIONS

WATER BOTTLE FILLING STATIONS



Embedded Unistrut Lifting Point.

There was an incident yesterday where an embedded Unistrut pulled out of the ceiling in SUT 2. It appears that the anchor was placed too close to the end.

If you are doing these activities, please review your procedures and make sure we are attaching in the right locations.

For now, we will not be attaching to 30cm pieces.



Daily Coordination Meeting



14:00 Sign In