

Daily Coordination Meeting



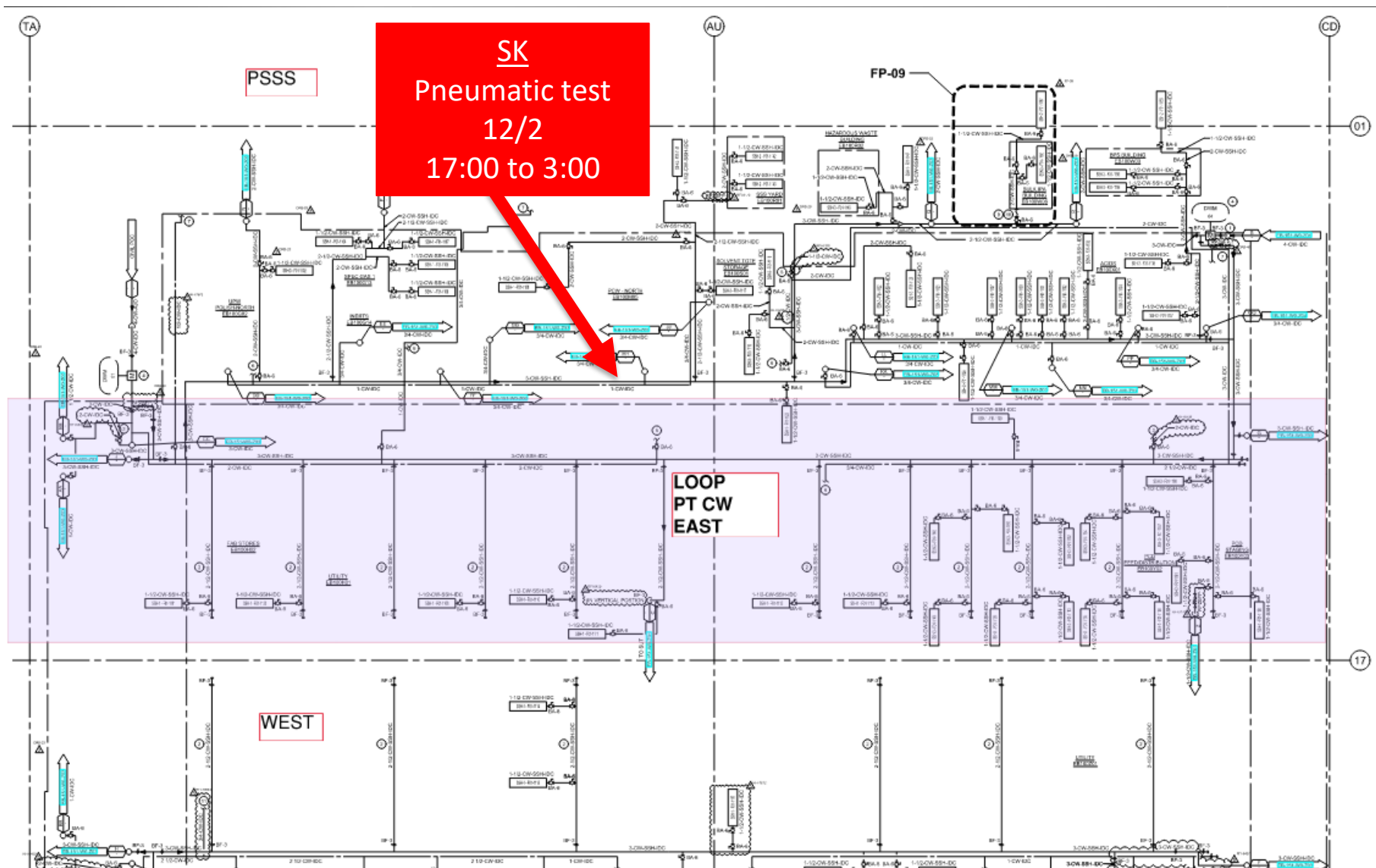
14:00 Sign In

Daily Coordination Meeting

General Topics:

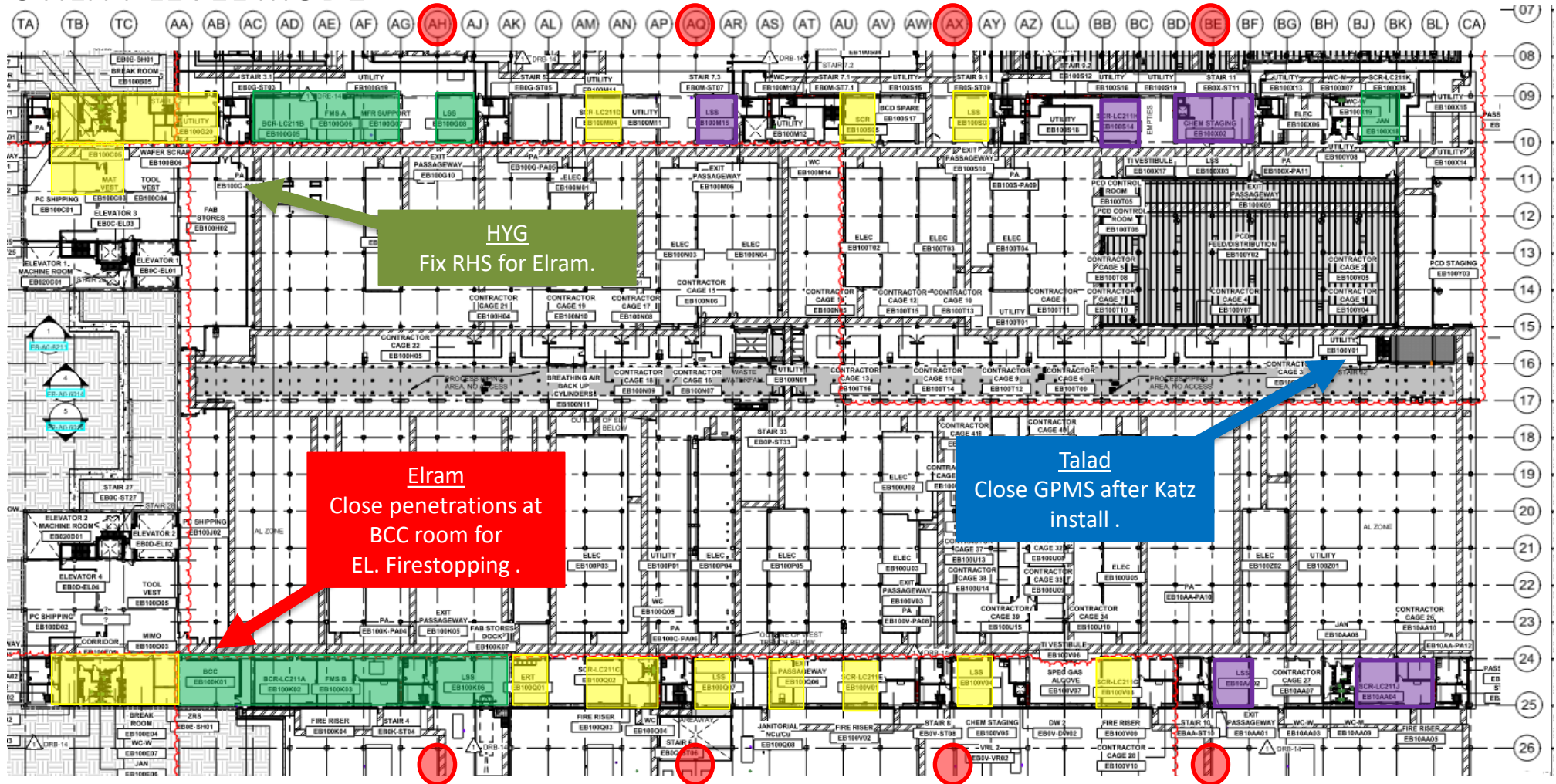
- * Trade damage
- * Site Closed at 23:59 Today
- * Site Closed tomorrow Friday 29 November

UTILITY LEVEL PRESS T.





UTILITY LEVEL MOD1



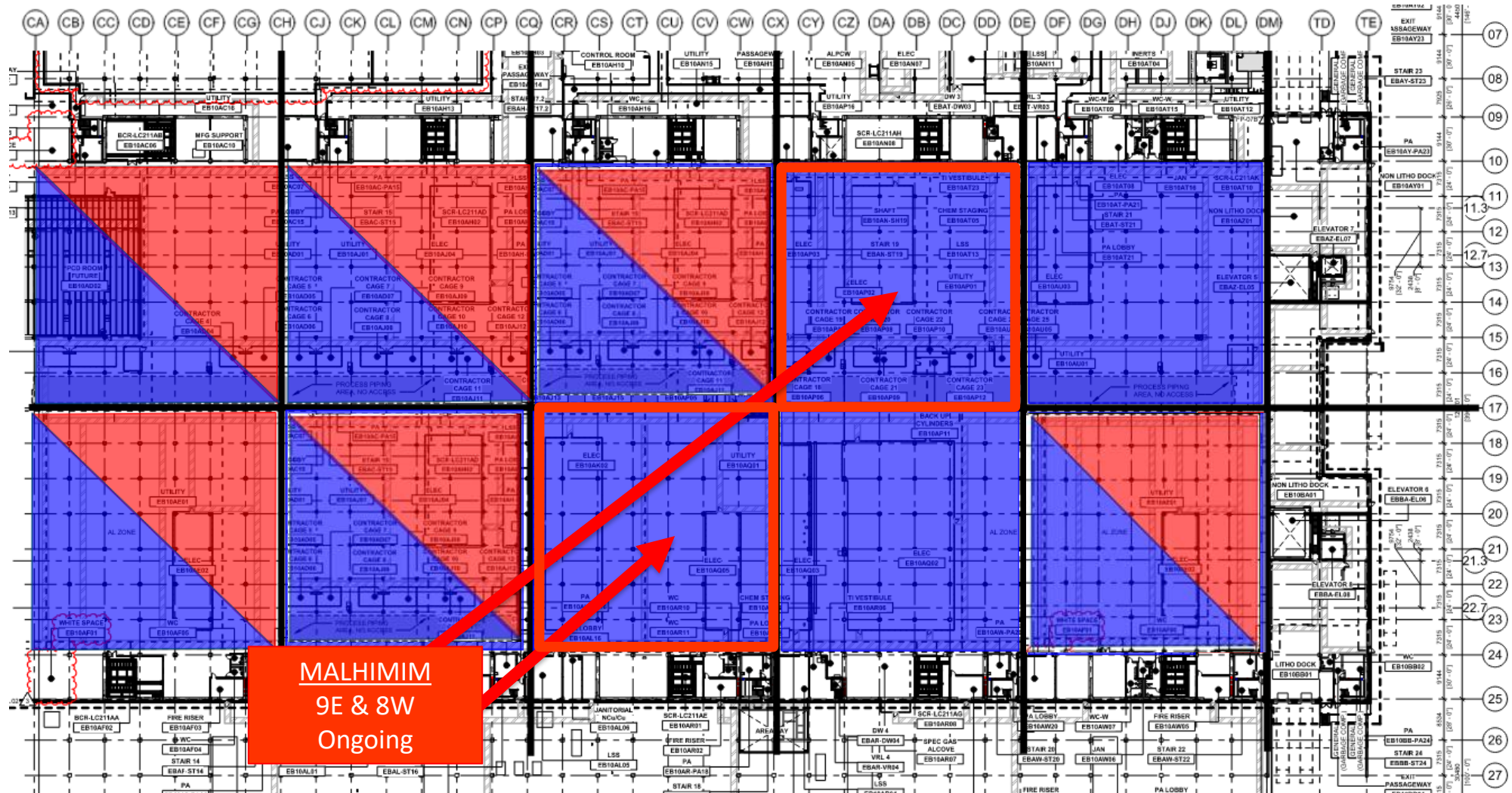
BELFOR
Mold remediation

ELRAM
Drywall install

MEP+Electrical
Ready for re-install

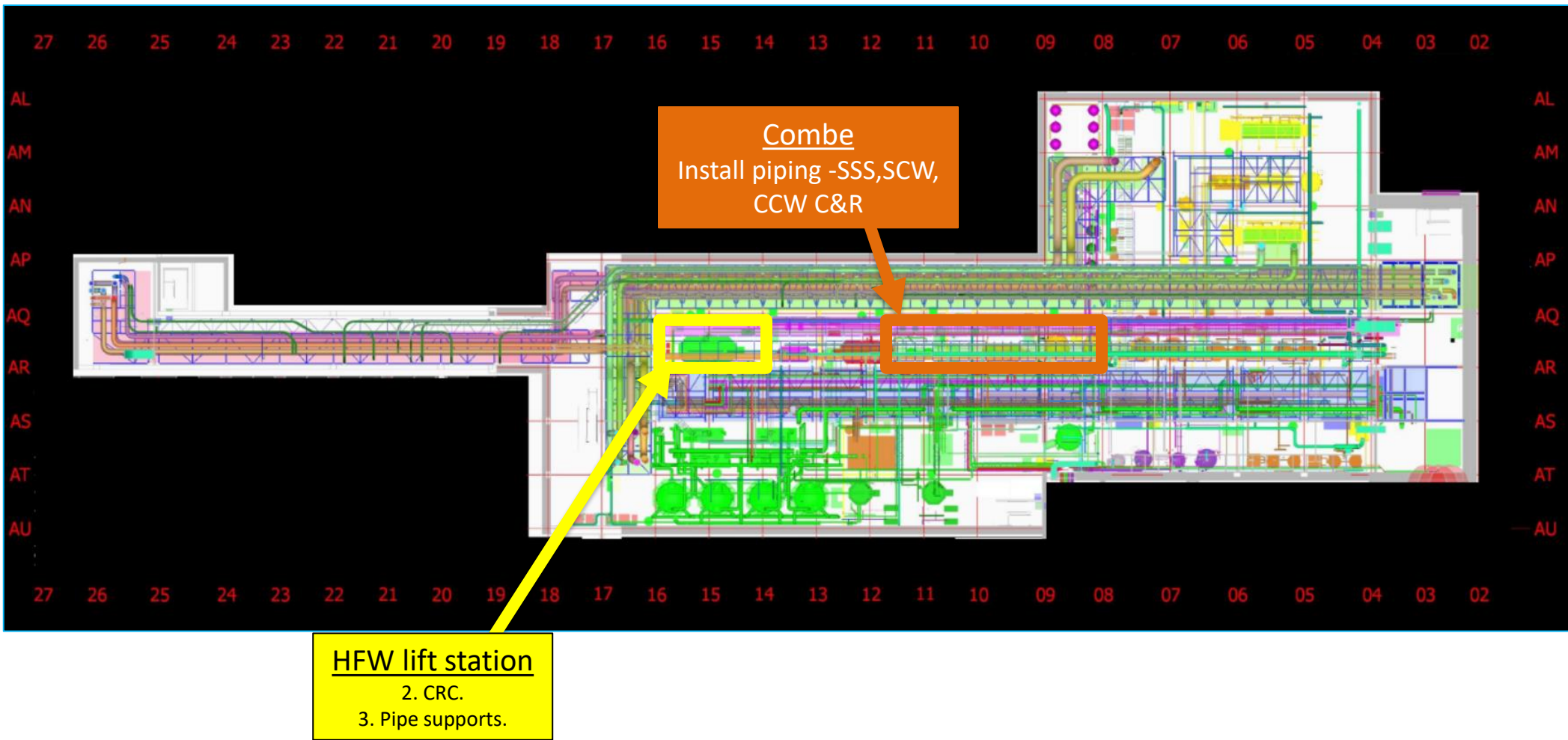


UTILITY LEVEL MOD2

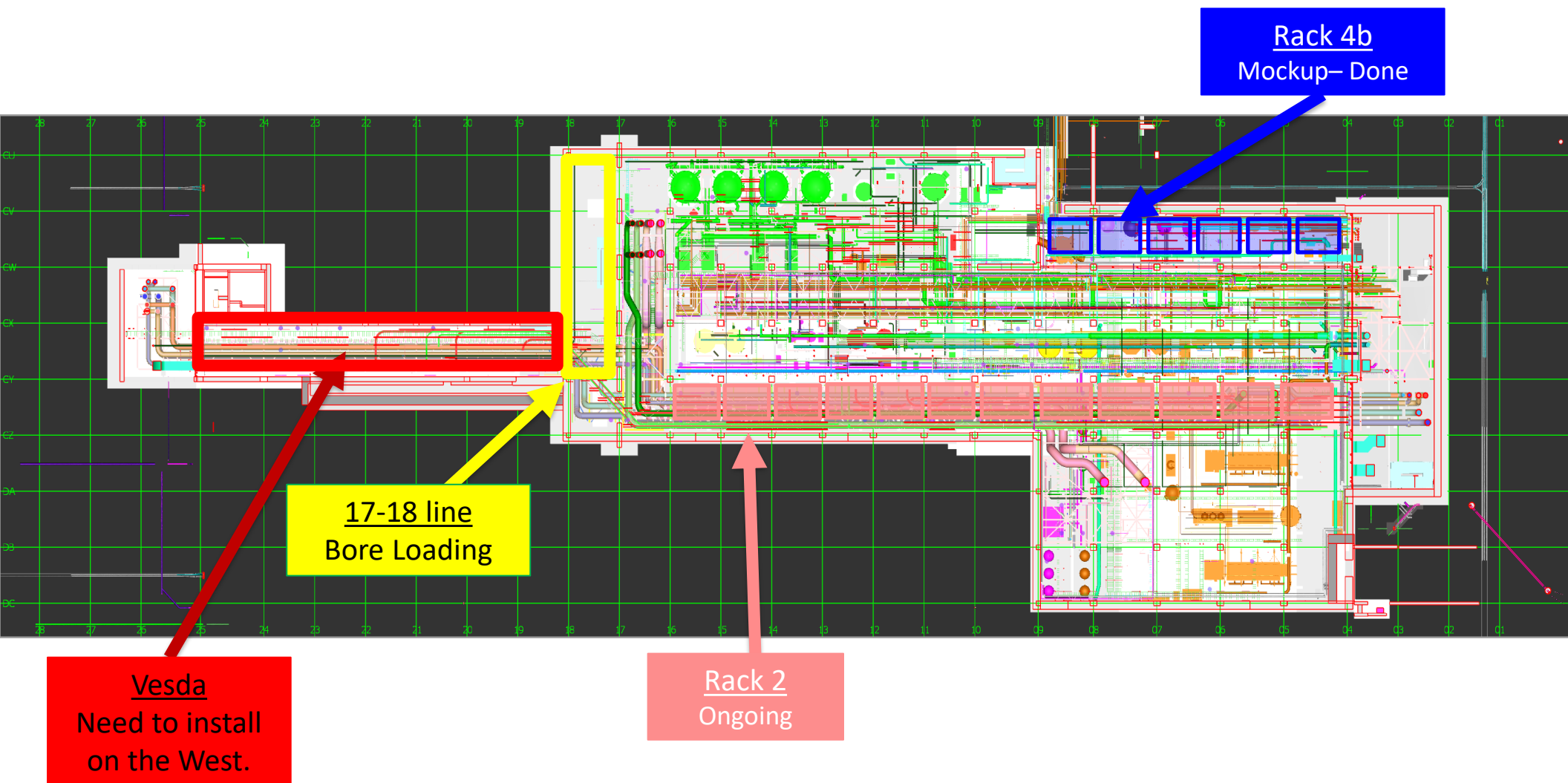




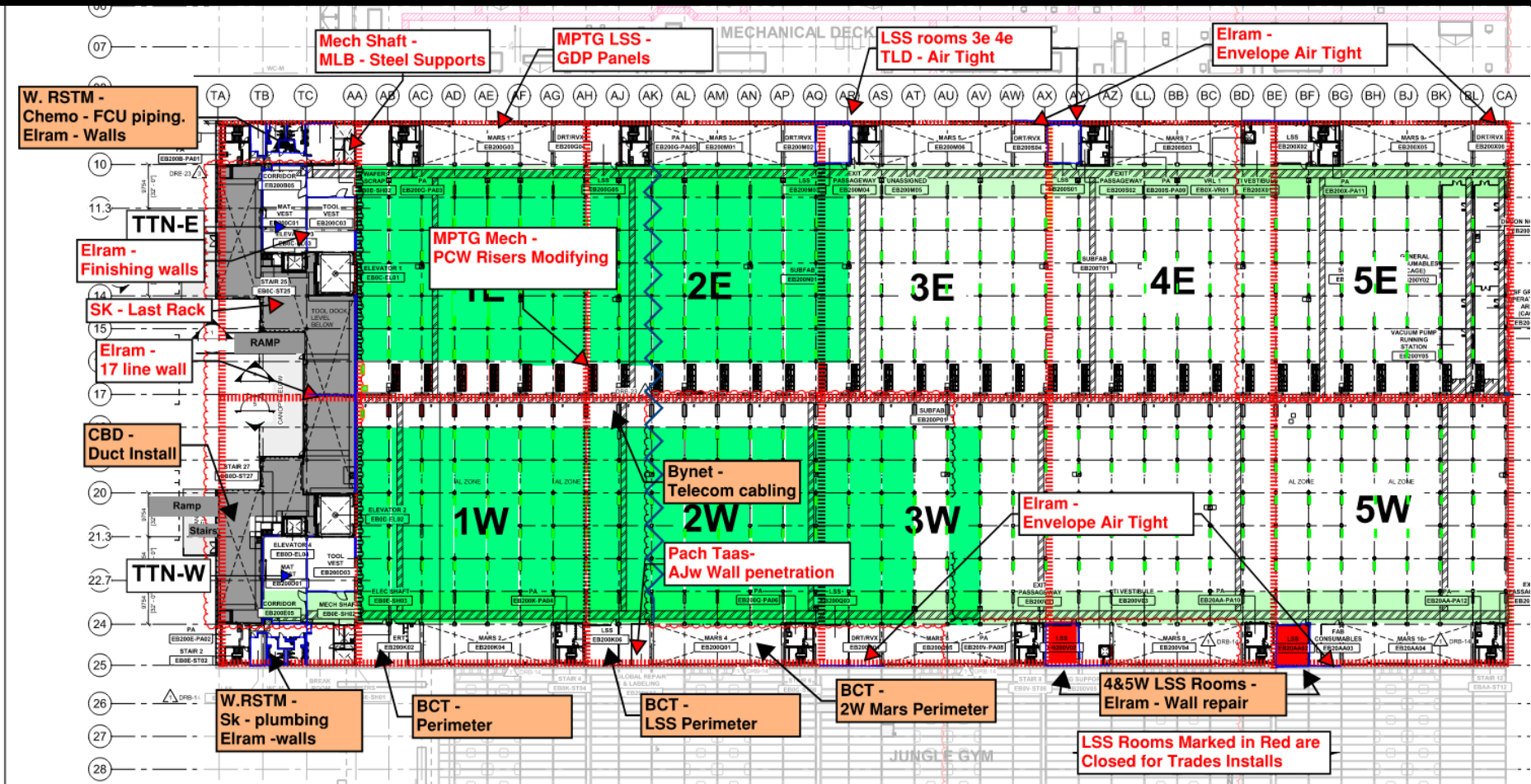
SUT 38.1 LEVEL



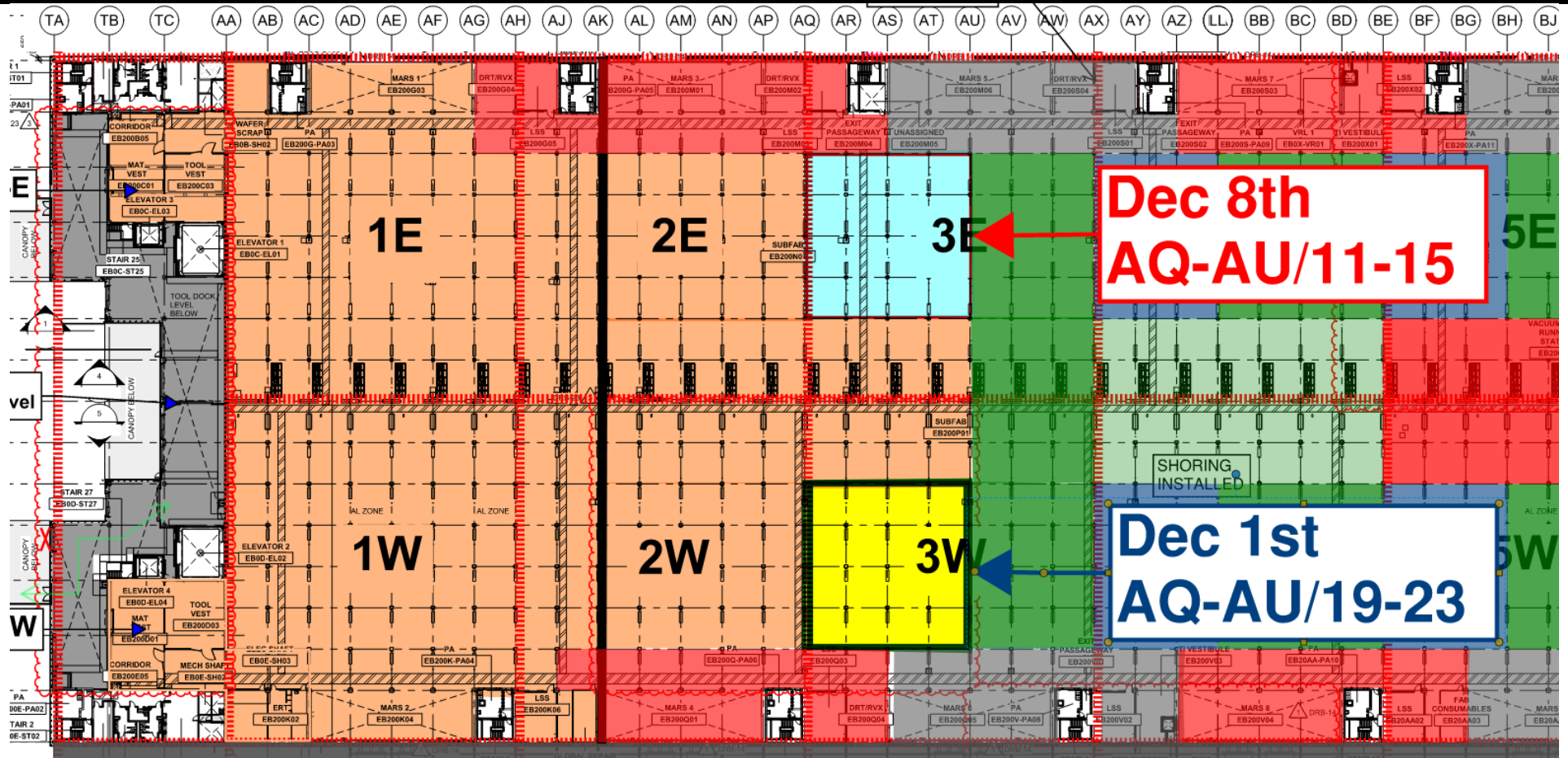
SUT 38.2 LEVEL



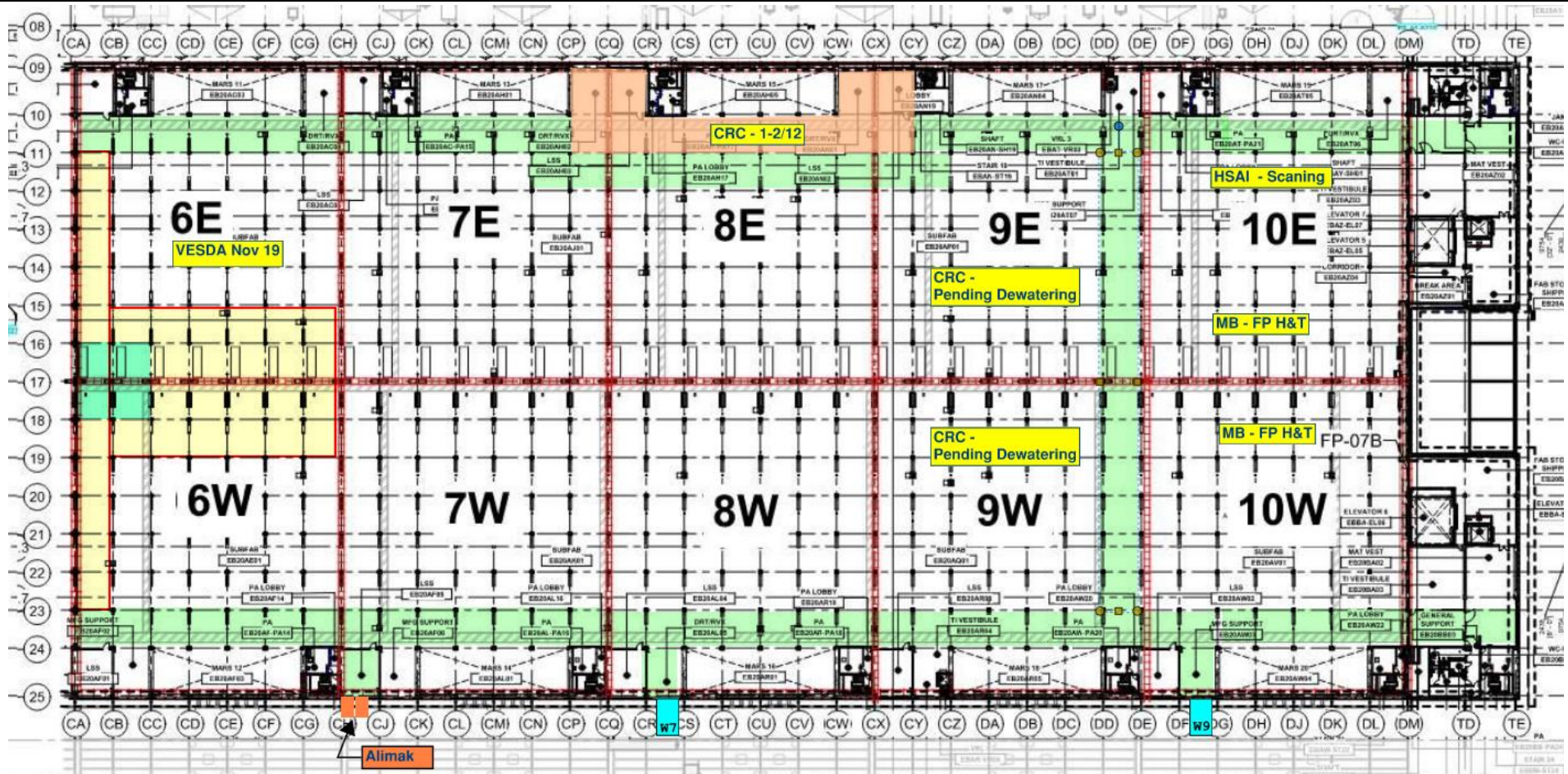
SUBFAB BUILDOUT MOD 1

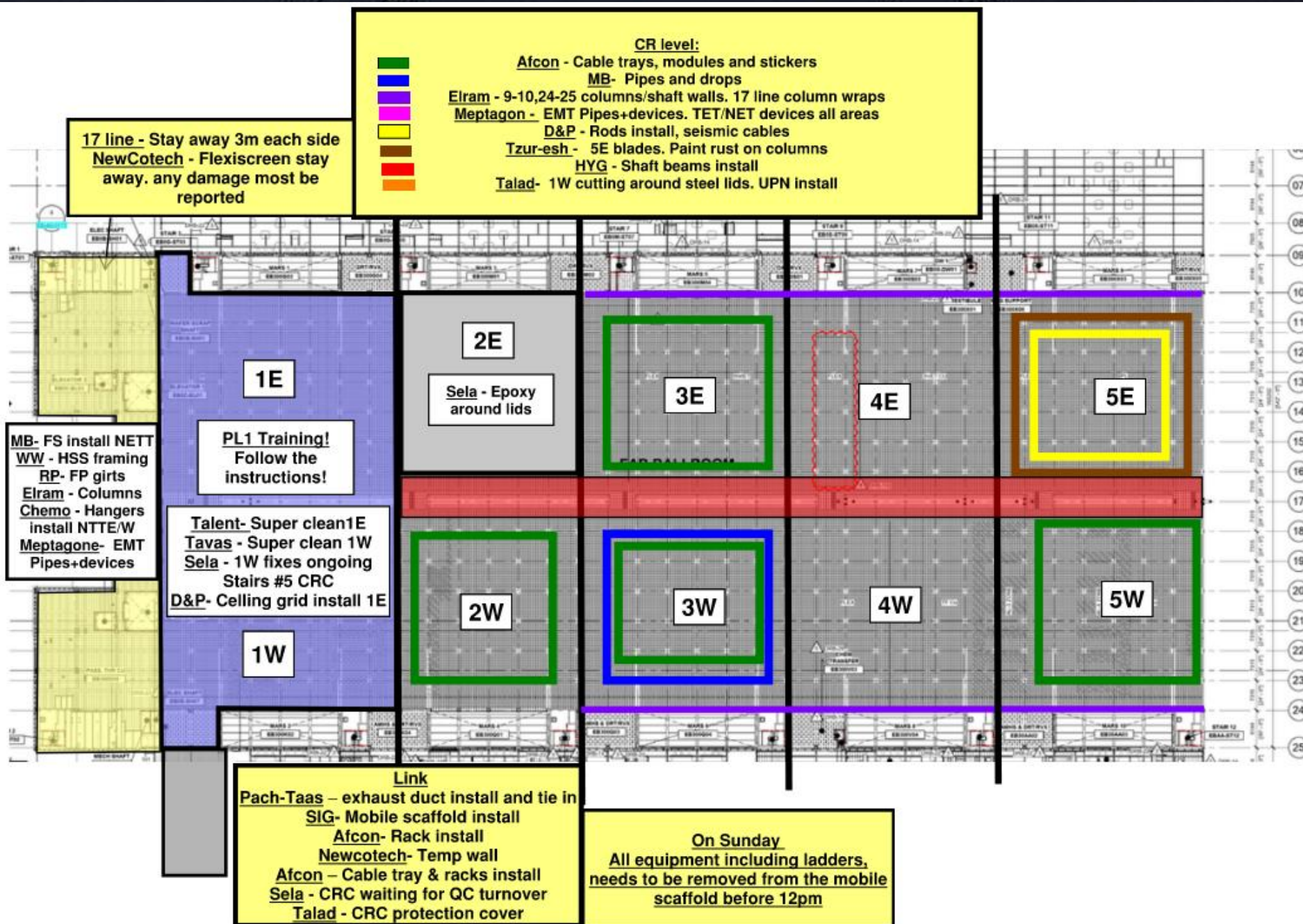
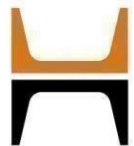


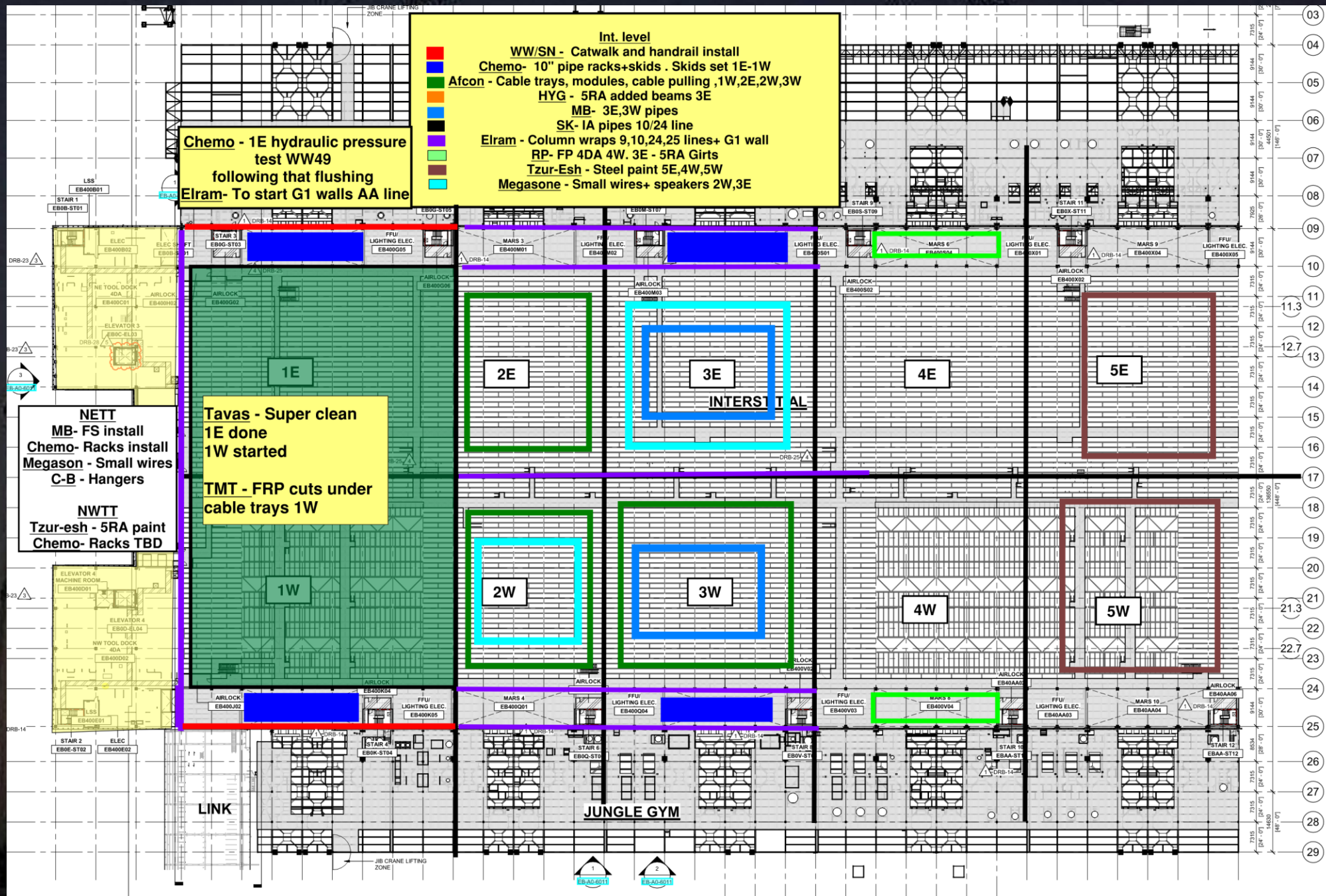
SUBFAB CRC TOPCOAT

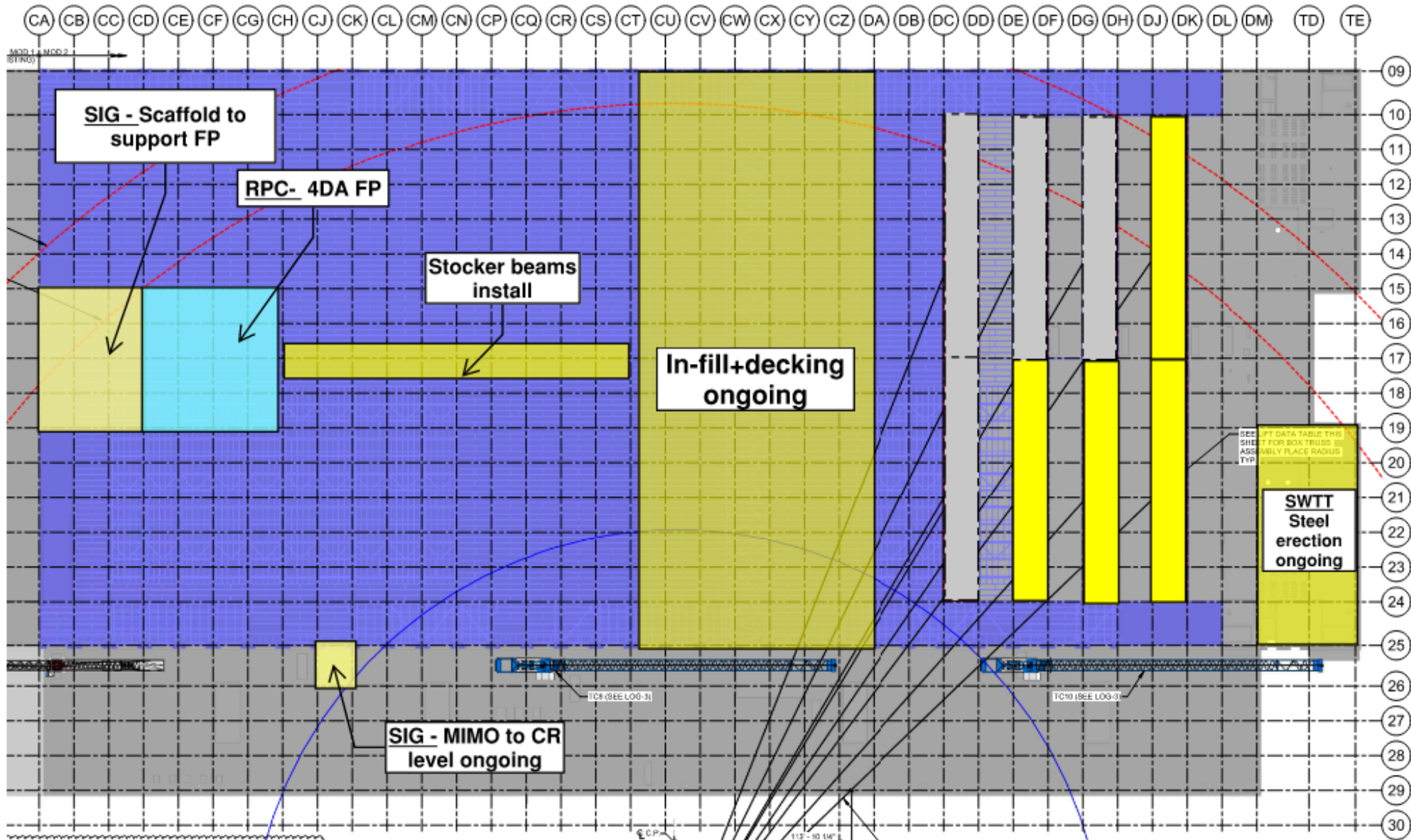


SUBFAB BUILDOUT MOD 2







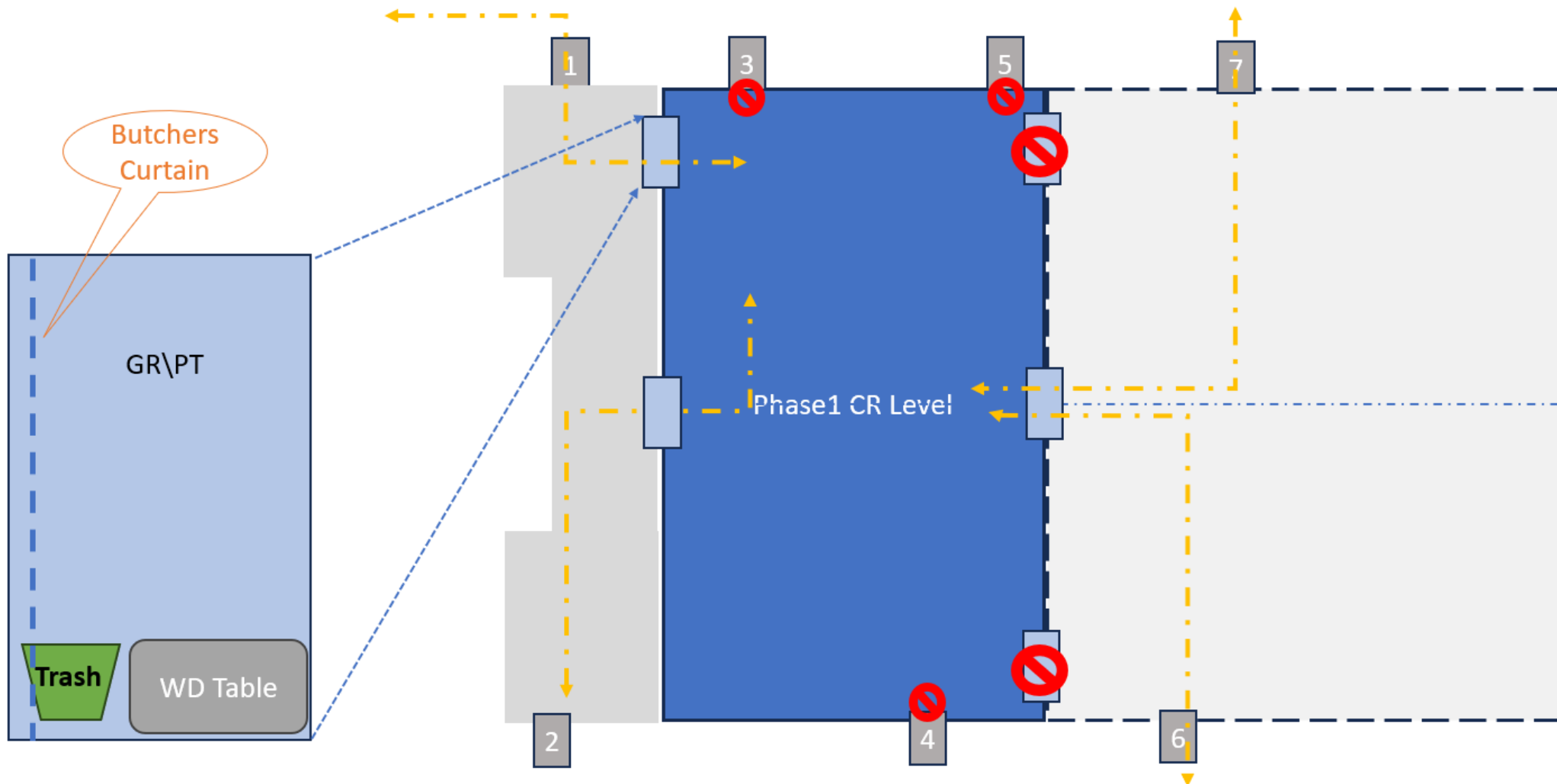


Phase 1 (PL1-2) Accesses protocol

- PL1-2 Sticker
- Clean Equipment free from dust and in “As good as new” condition
- Vacuum Cleaner to any particles generating work
- Trash Bages
- Wipes

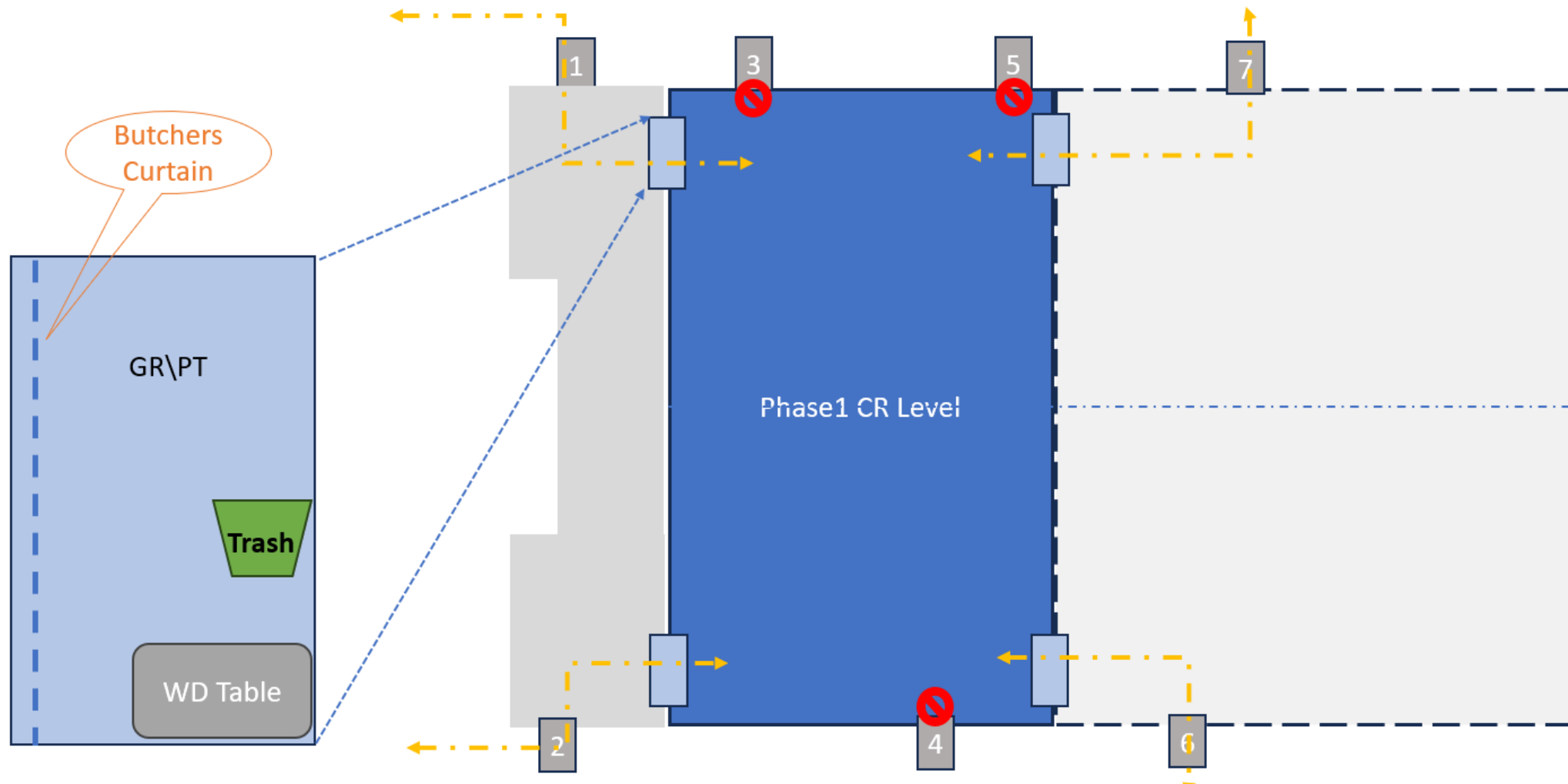


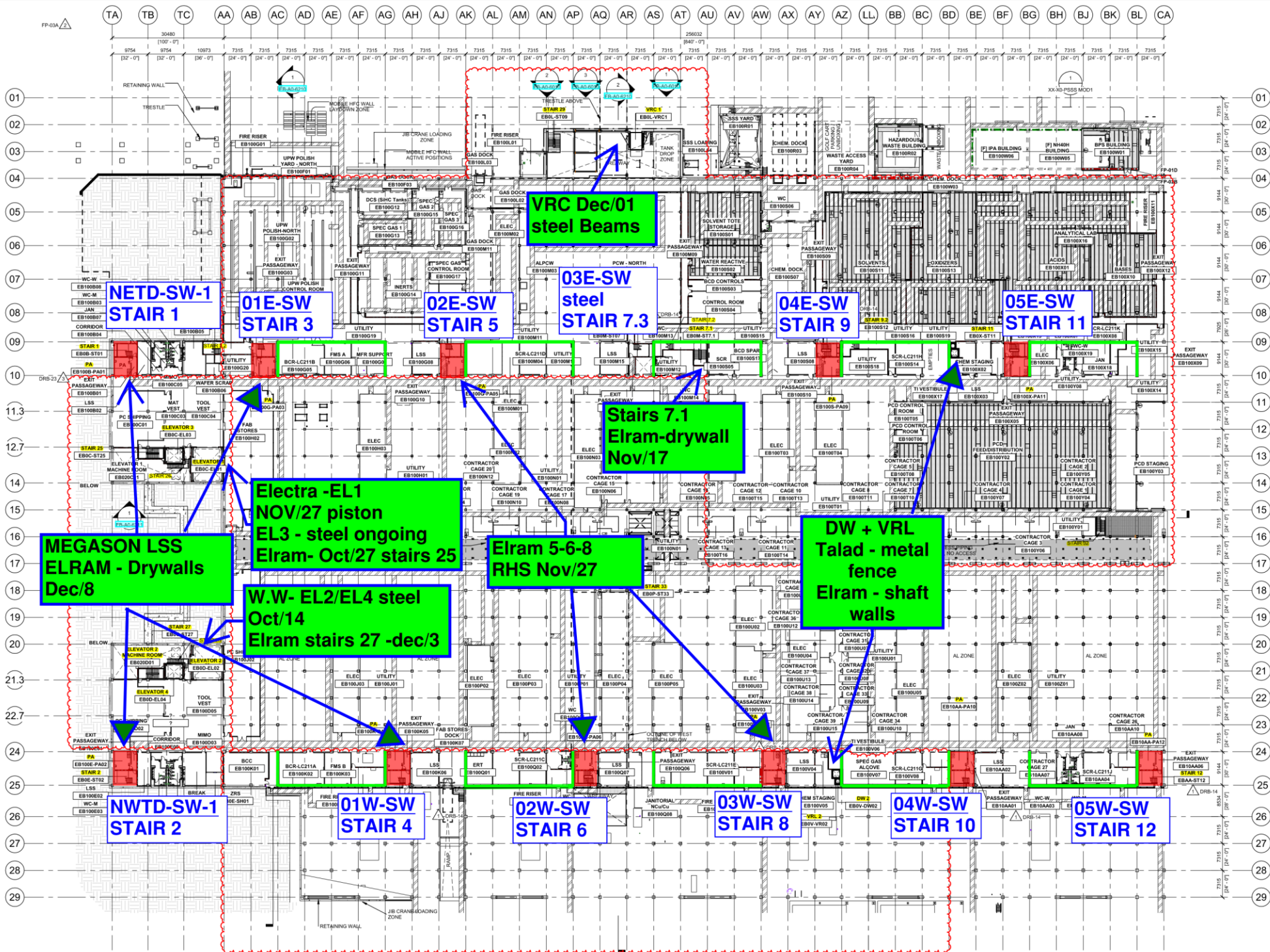
CR Phase 1 (PL1-2) Accesses points





Interstitial Phase 1 (PL1-2) Accesses points





Siding - East FAB - PSSS

BLOWDOWN 30%

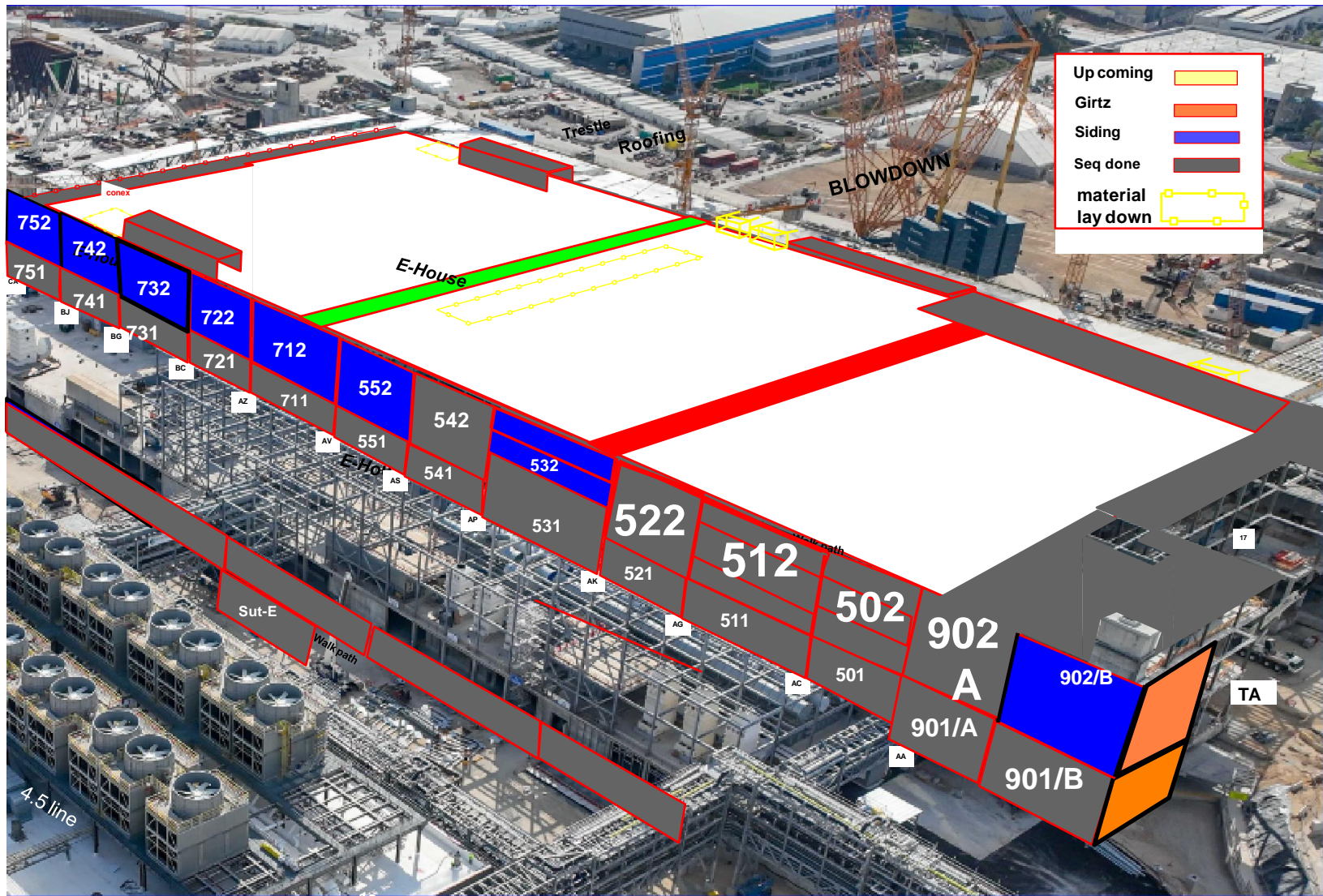
[illegible]

EB-0BA-SUB-UTILITY - 132,797

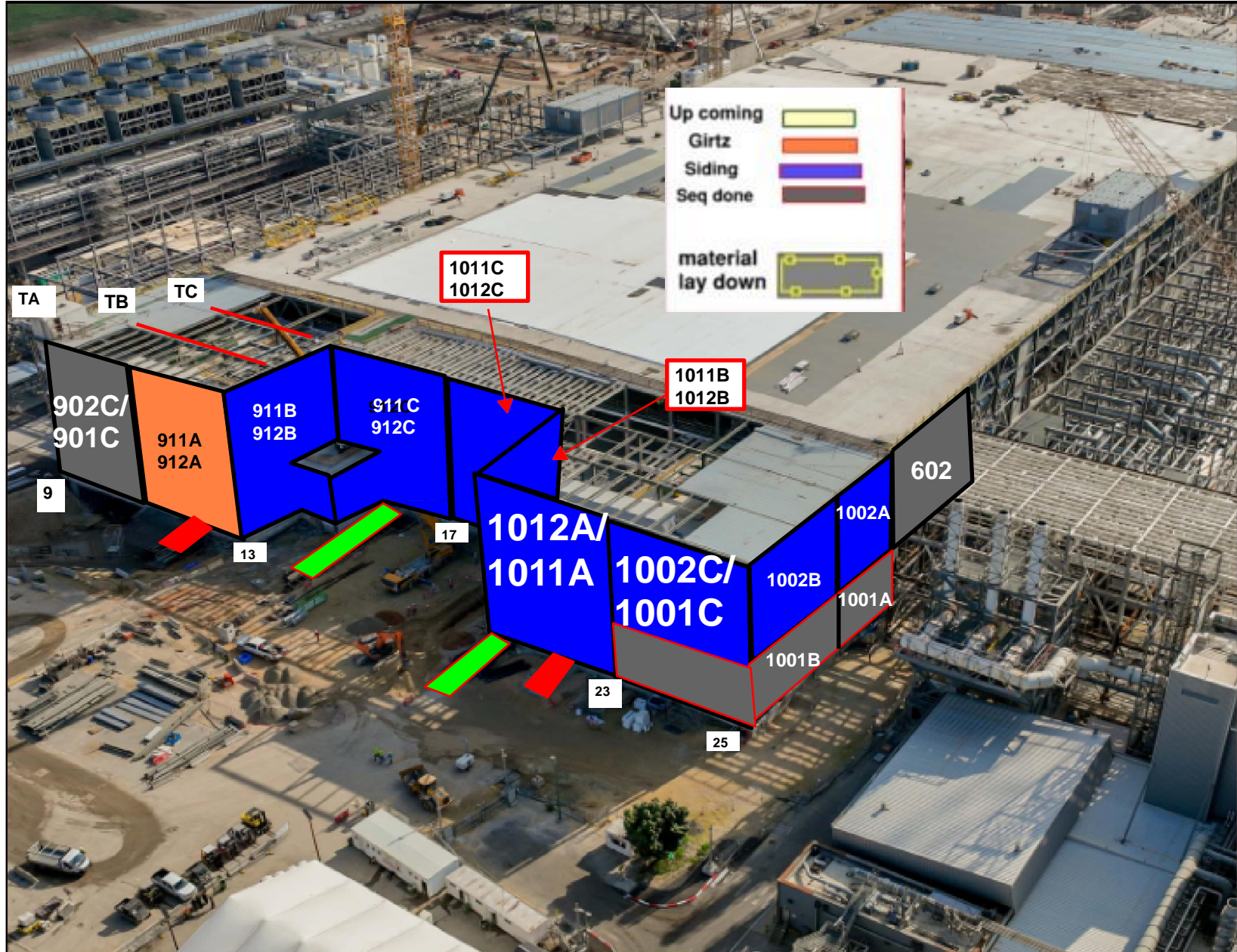
Siding - West FAB - JYG

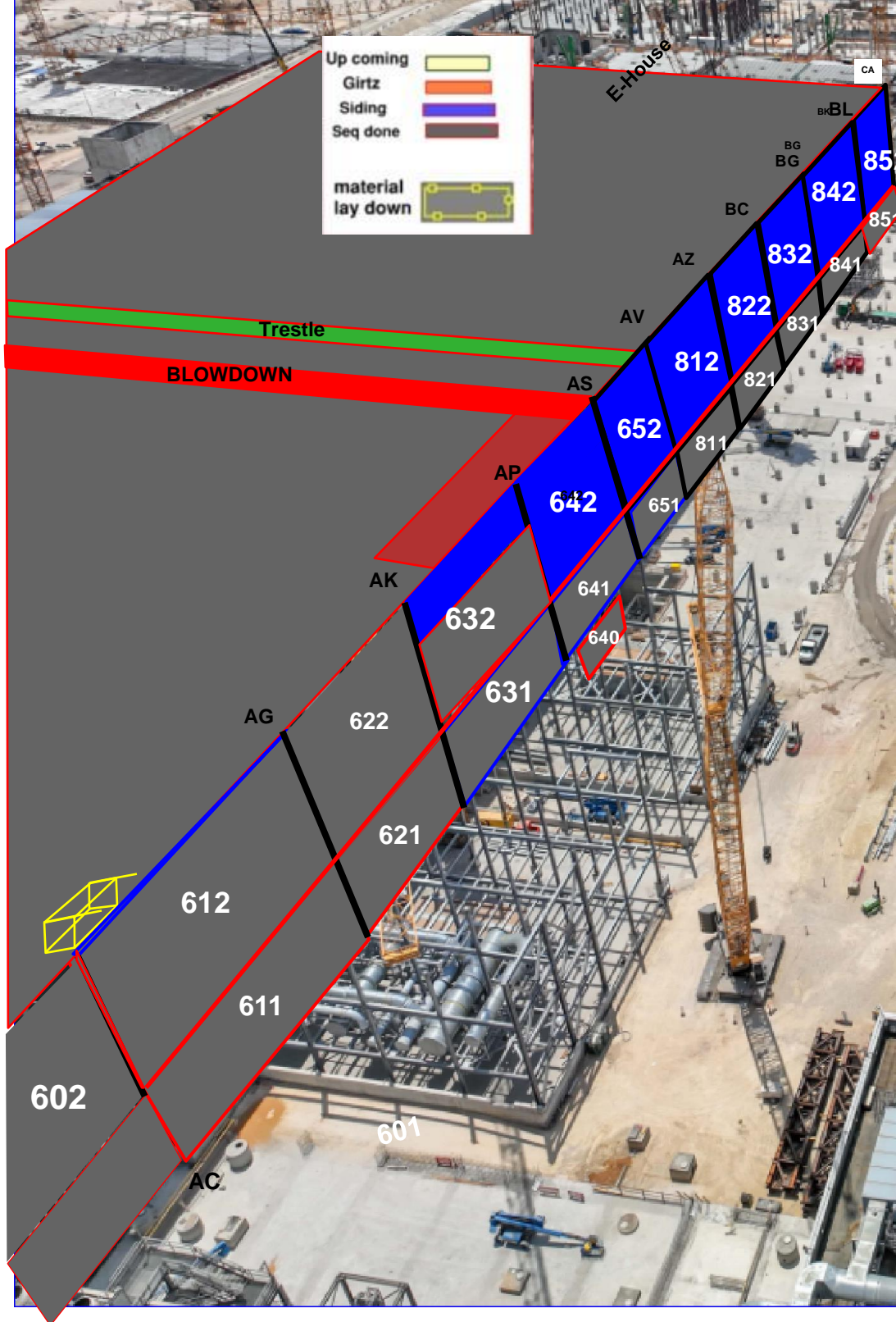
BLOWDOWN 30%

	TA	TB	TC	AA	AB	AC	AD	AE	AF	AG	AH	AI	AJ	AK	AL	AM	AN	AO	AP	AQ	AR	AS	AT	AU	AV	AW	AX	AY	AZ	BA	BB	BC	BD	BE	BF	BG	BH	BI	BJ	BK	BL	CA																																																																																																																																																																																																																																																																																																																																																																																																																																																																																																																																																																																																																																																																																																																																																																																																																																																																																																																																																																																																																																								
	1001 / 1002		601 / 602		611 / 612				621 / 622				631 / 632				641 / 642				651 / 652				611 / 612				621 / 622				631 / 632				641 / 642				651 / 652				611 / 612				621 / 622				631 / 632				641 / 642				651 / 652																																																																																																																																																																																																																																																																																																																																																																																																																																																																																																																																																																																																																																																																																																																																																																																																																																																																																																																																																																																																																					
Total	28	28	28	15	15	31	31	31	31	31	31	31	31	31	30	31	31	31	31	29	27	24	24	25	29	18	19	18	14	14	14	14	14	19	19	14	14	14	14	14	14	14	14	14	31																																																																																																																																																																																																																																																																																																																																																																																																																																																																																																																																																																																																																																																																																																																																																																																																																																																																																																																																																																																																																																					
Invalley 4	28	28	10	15	15	31	31	31	31	31	31	31	31	31	30	31	31	31	31	29	27	24	24	25	29	18	19	18	14	14	14	14	14	19	19	14	14	14	14	14	14	14	14	14	31																																																																																																																																																																																																																																																																																																																																																																																																																																																																																																																																																																																																																																																																																																																																																																																																																																																																																																																																																																																																																																					
%	100%	100%	34%	100%	100%	100%	100%	100%	100%	100%	100%	100%	100%	100%	100%	100%	100%	100%	100%	100%	100%	100%	100%	100%	100%	100%	100%	100%	100%	100%	100%	100%	100%	100%	100%	100%	100%	100%	100%	100%	100%	100%	100%	100%	100%	100%	100%	100%	100%																																																																																																																																																																																																																																																																																																																																																																																																																																																																																																																																																																																																																																																																																																																																																																																																																																																																																																																																																																																																																																	
SRA			0														0	0	0									0	0	0	0	0	0	0	0	0	0	0	0	0	0	0	0	0	0	0	0	0	0	0	0	0	0	0	0	0	0	0	0	0	0	0	0	0	0	0	0	0	0	0	0	0	0	0	0	0	0	0	0	0	0	0	0	0	0	0	0	0	0	0	0	0	0	0	0	0	0	0	0	0	0	0	0	0	0	0	0	0	0	0	0	0	0	0	0	0	0	0	0	0	0	0	0	0	0	0	0	0	0	0	0	0	0	0	0	0	0	0	0	0	0	0	0	0	0	0	0	0	0	0	0	0	0	0	0	0	0	0	0	0	0	0	0	0	0	0	0	0	0	0	0	0	0	0	0	0	0	0	0	0	0	0	0	0	0	0	0	0	0	0	0	0	0	0	0	0	0	0	0	0	0	0	0	0	0	0	0	0	0	0	0	0	0	0	0	0	0	0	0	0	0	0	0	0	0	0	0	0	0	0	0	0	0	0	0	0	0	0	0	0	0	0	0	0	0	0	0	0	0	0	0	0	0	0	0	0	0	0	0	0	0	0	0	0	0	0	0	0	0	0	0	0	0	0	0	0	0	0	0	0	0	0	0	0	0	0	0	0	0	0	0	0	0	0	0	0	0	0	0	0	0	0	0	0	0	0	0	0	0	0	0	0	0	0	0	0	0	0	0	0	0	0	0	0	0	0	0	0	0	0	0	0	0	0	0	0	0	0	0	0	0	0	0	0	0	0	0	0	0	0	0	0	0	0	0	0	0	0	0	0	0	0	0	0	0	0	0	0	0	0	0	0	0	0	0	0	0	0	0	0	0	0	0	0	0	0	0	0	0	0	0	0	0	0	0	0	0	0	0	0	0	0	0	0	0	0	0	0	0	0	0	0	0	0	0	0	0	0	0	0	0	0	0	0	0	0	0	0	0	0	0	0	0	0	0	0	0	0	0	0	0	0	0	0	0	0	0	0	0	0	0	0	0	0	0	0	0	0	0	0	0	0	0	0	0	0	0	0	0	0	0	0	0	0	0	0	0	0	0	0	0	0	0	0	0	0	0	0	0	0	0	0	0	0	0	0	0	0	0	0	0	0	0	0	0	0	0	0	0	0	0	0	0	0	0	0	0	0	0	0	0	0	0	0	0	0	0	0	0	0	0	0	0	0	0	0	0	0	0	0	0	0	0	0	0	0	0	0	0	0	0	0	0	0	0	0	0	0	0	0	0	0	0	0	0	0	0	0	0	0	0	0	0	0	0	0	0	0	0	0	0	0	0	0	0	0	0	0	0	0	0	0	0	0	0	0	0	0	0	0	0	0	0	0	0	0	0	0	0	0	0	0	0	0	0	0	0	0	0	0	0	0	0	0	0	0	0	0	0	0	0	0	0	0	0	0	0	0	0	0	0	0	0	0	0	0	0	0	0	0	0	0	0	0	0	0	0	0	0	0	0	0	0	0	0	0	0	0	0	0	0	0	0	0	0	0	0	0	0	0	0	0	0	0	0	0	0	0	0	0	0	0	0	0	0	0	0	0	0	0	0	0	0	0	0	0	0	0	0	0	0	0	0	0	0	0	0	0	0	0	0	0	0	0	0	0	0	0	0	0	0	0	0	0	0	0	0	0	0	0	0	0	0	0	0	0	0	0	0	0	0	0	0	0	0	0	0	0	0	0	0	0	0	0	0	0	0	0	0	0	0	0	0	0	0	0	0	0	0	0	0	0	0	0	0	0	0	0	0	0	0	0	0	0	0	0	0	0	0	0	0	0	0	0	0	0	0	0	0	0	0	0	0	0	0	0	0	0	0	0	0	0	0	0	0	0	0	0	0	0	0	0	0	0	0	0	0	0	0	0	0	0	0	0	0	0	0	0	0	0	0	0	0	0	0	0	0	0	0	0	0	0	0	0	0	0	0	0	0	0	0	0	0	0	0	0	0	0	0	0	0	0	0	0	0	0	0	0	0	0	0	0	0	0	0	0	0	0	0	0	0	0	0	0	0	0	0	0	0	0	0	0	0	0	0	0	0	0	0	0	0	0	0	0	0	0	0	0	0	0	0	0	0	0	0	0	0	0	0	0	0	0	0	0	0	0	0	0	0	0	0	0	0	0	0	0	0	0	0	0	0	0	0	0	0	0	0	0	0	0	0	0	0	0	0	0	0	0	0	0	0	0	0	0	0	0	0	0	0	0	0	0	0	0	0	0	0	0	0	0	0	0	0	0	0	0	0	0	0	0	0	0	0	0	0	0	0	0	0	0	0	0	0	0	0	0	0	0	0	0	0	0	0	0	0	0	0	0	0	0	0	0



Walk path

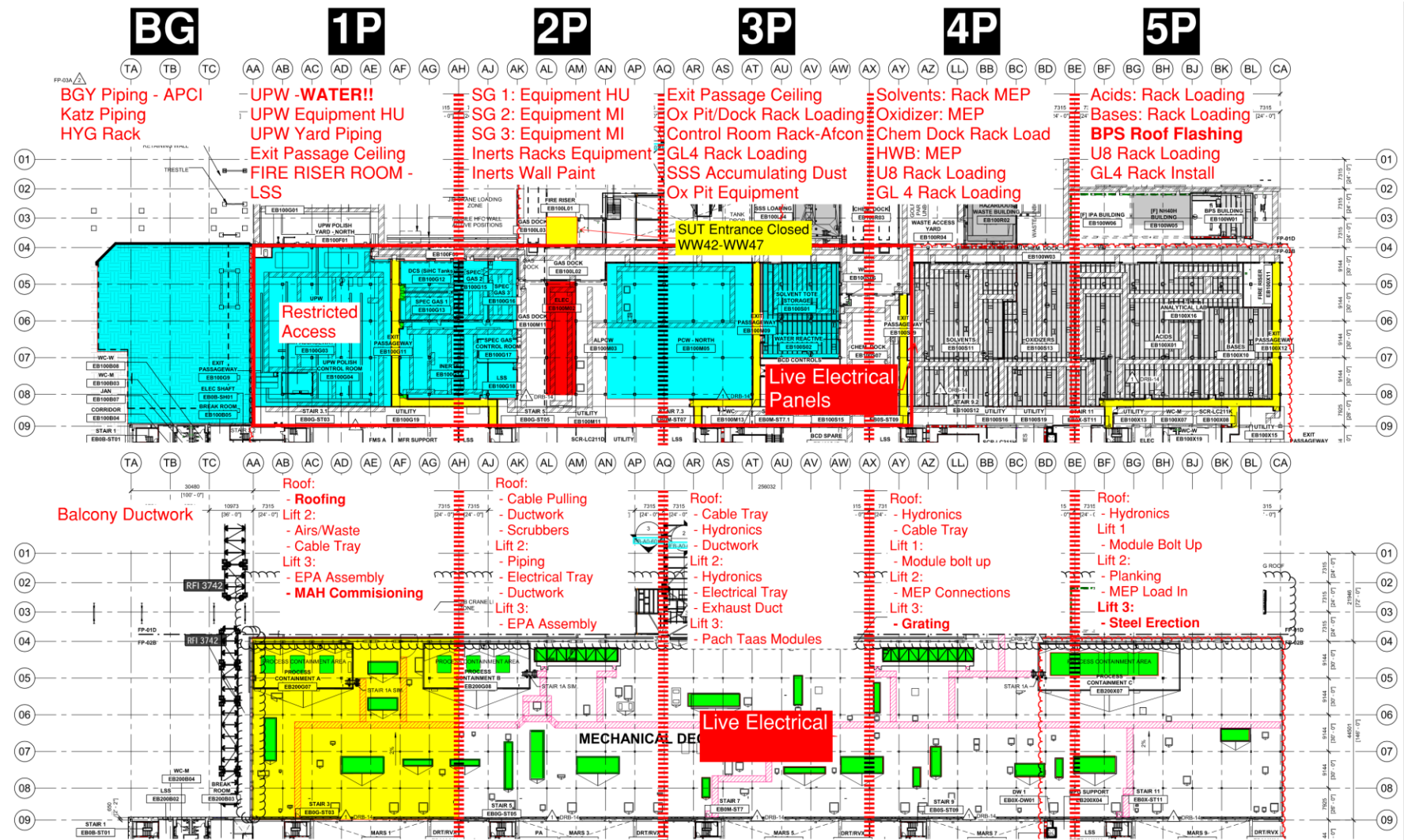




PSSS.1

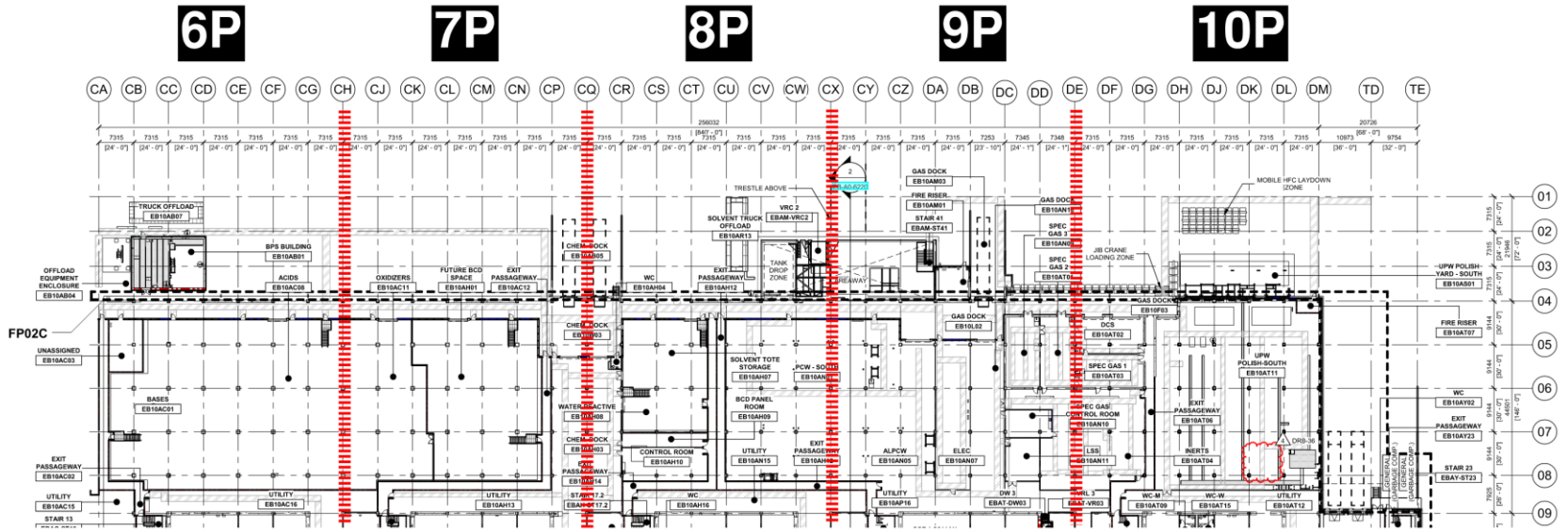
Utility Level 1YA

PSSS Roof 2SA

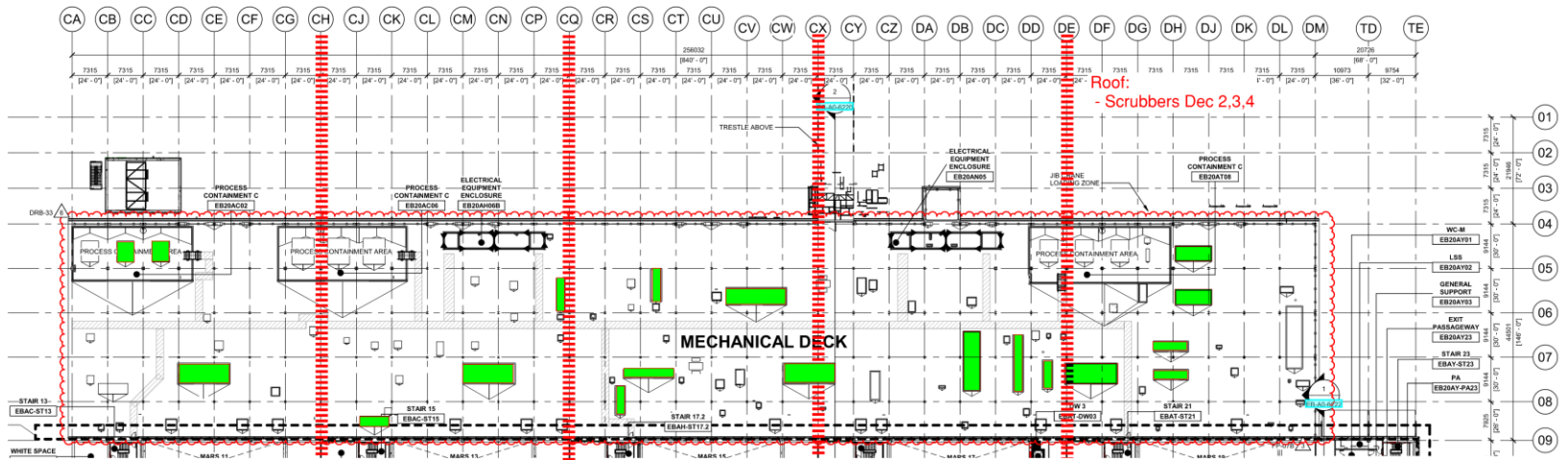


PSSS.2

Utility Level 1YA

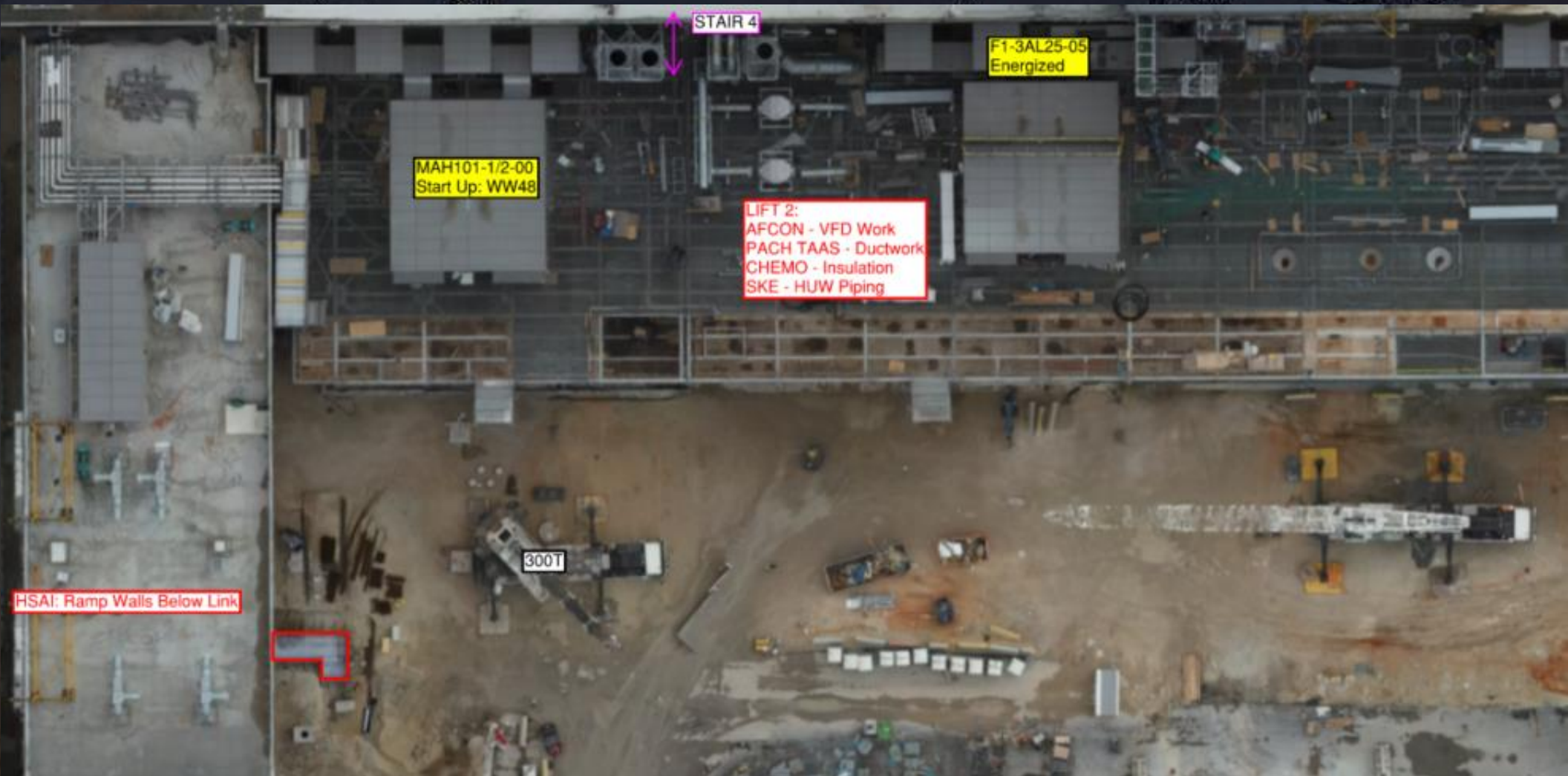


PSSS Roof 2SA





WJG 01J, 02J LIFT 2 & 3

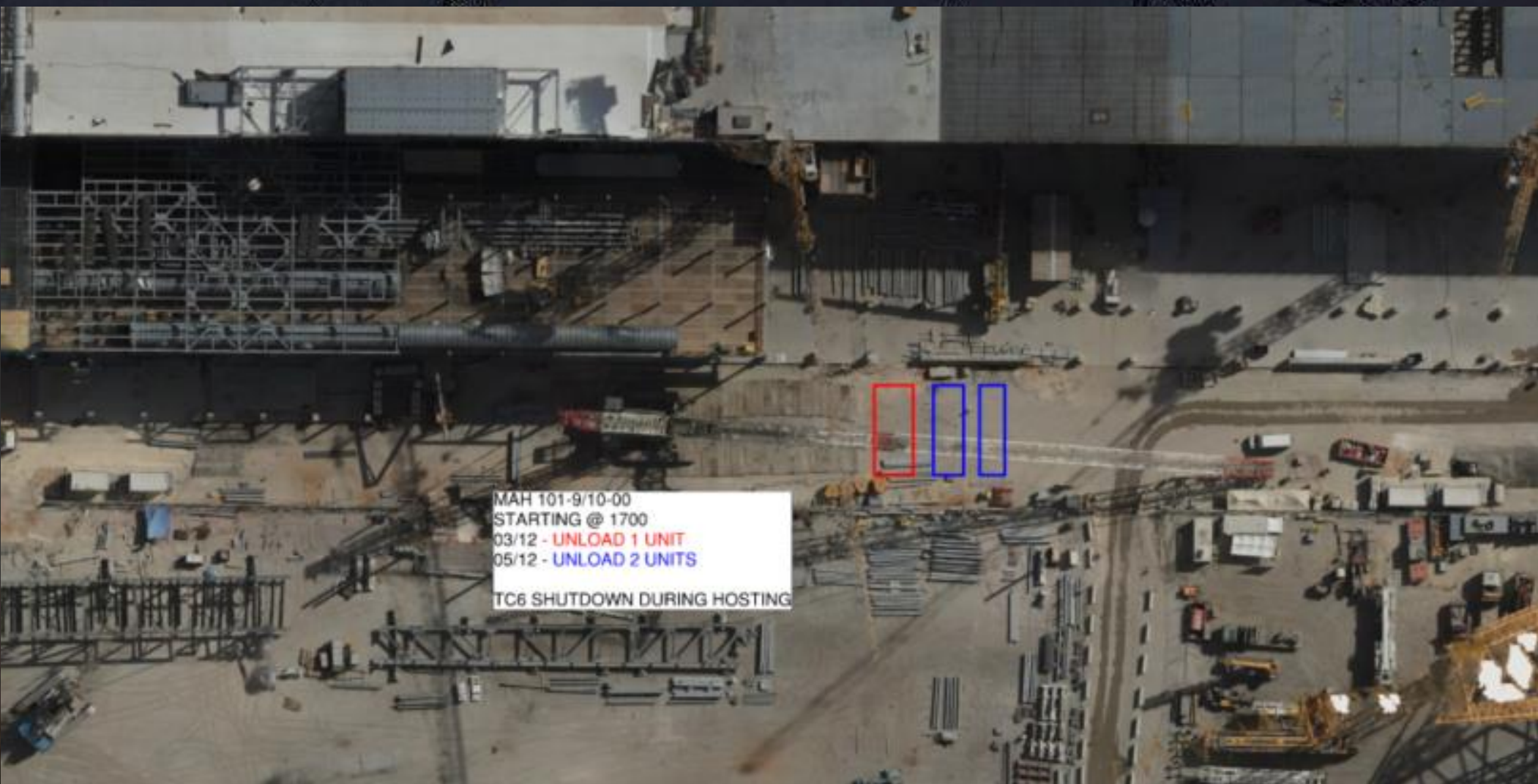




WJG 03J, 04J, 05J LIFT 2 & 3

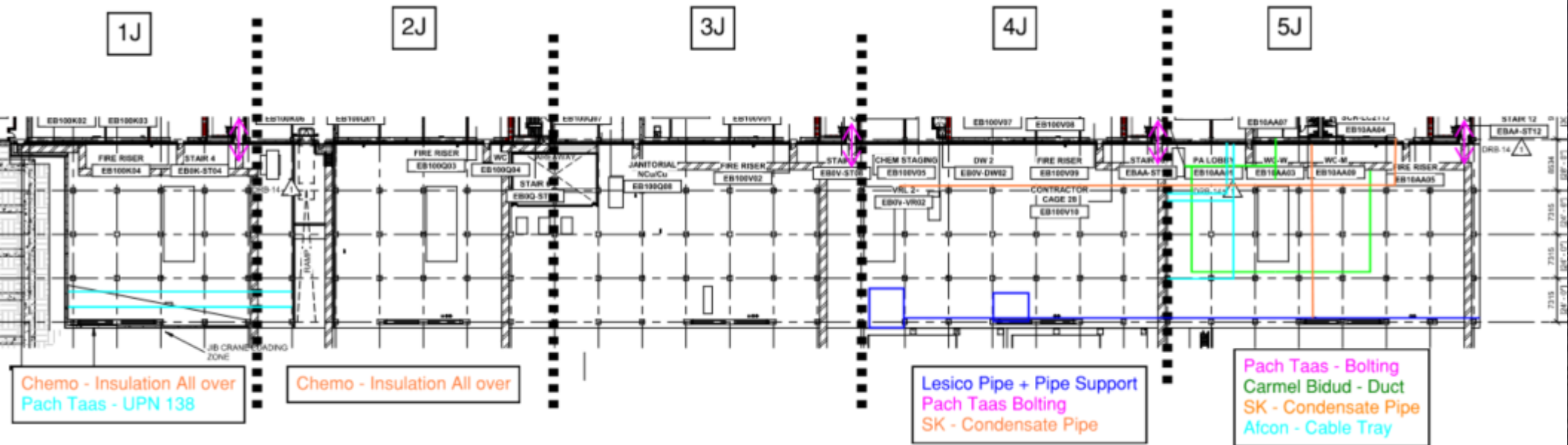


MAH101-9/10-00 Delivery WW49





WJG UTILITY LEVEL BUILD OUT

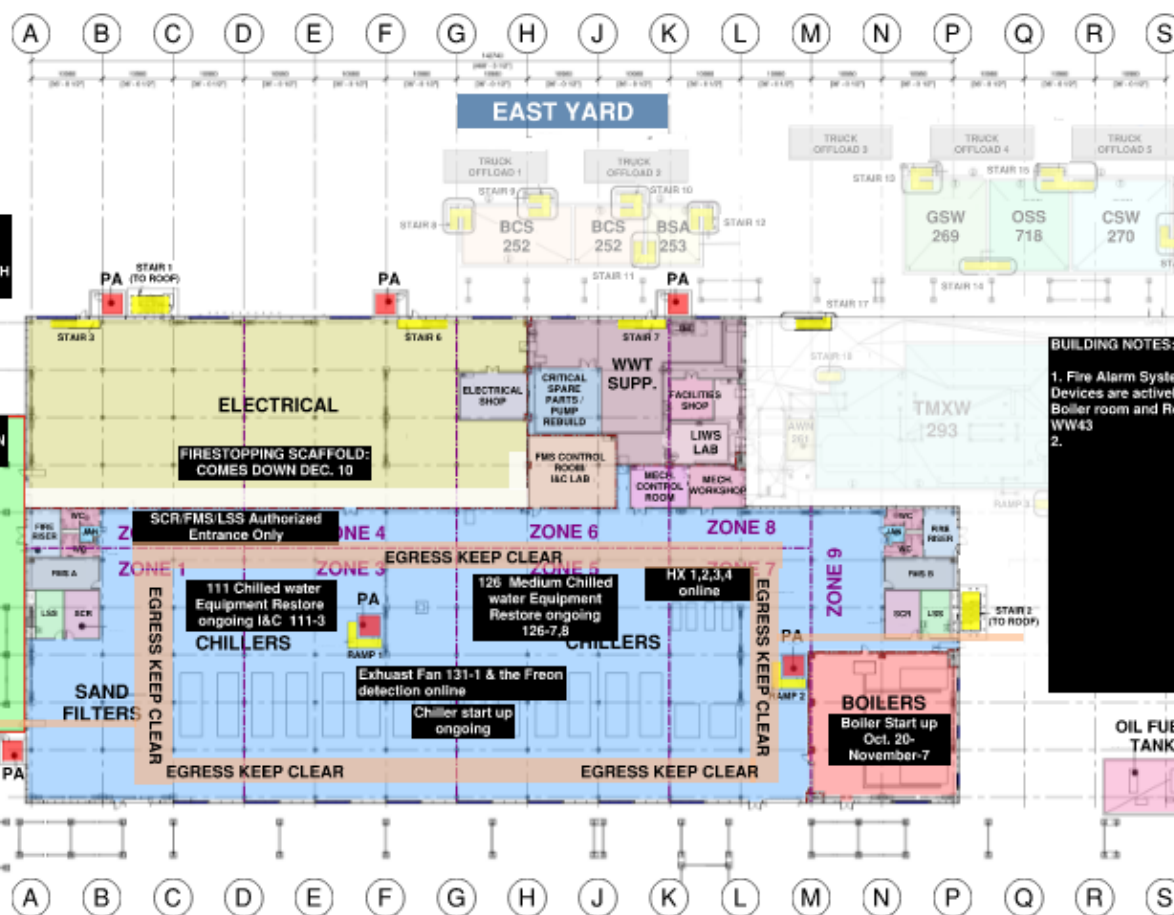




CUB 1

CUB 1 COORDINATION MAP

UPDATED __ / __ / __



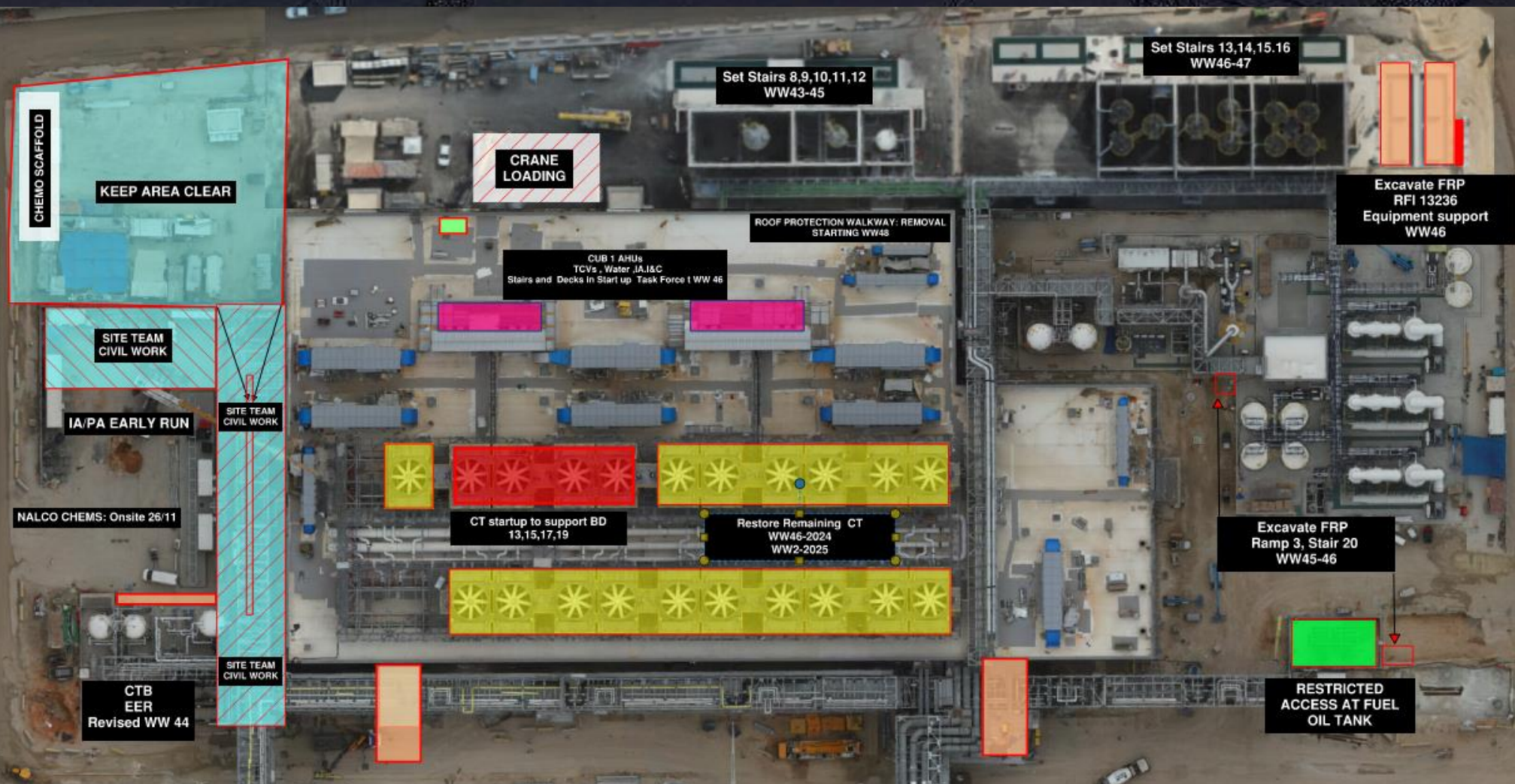
N

- PROTECTED AREA
- STAIRS / RAMPS
- YARDS
- TRUCK OFF/LOADING

ALARM NOTES:
1. FIRE ALARM: WAIT FOR HCC DIRECTION
2. GAS ALARM: EVACUATE TO NORTH YARD

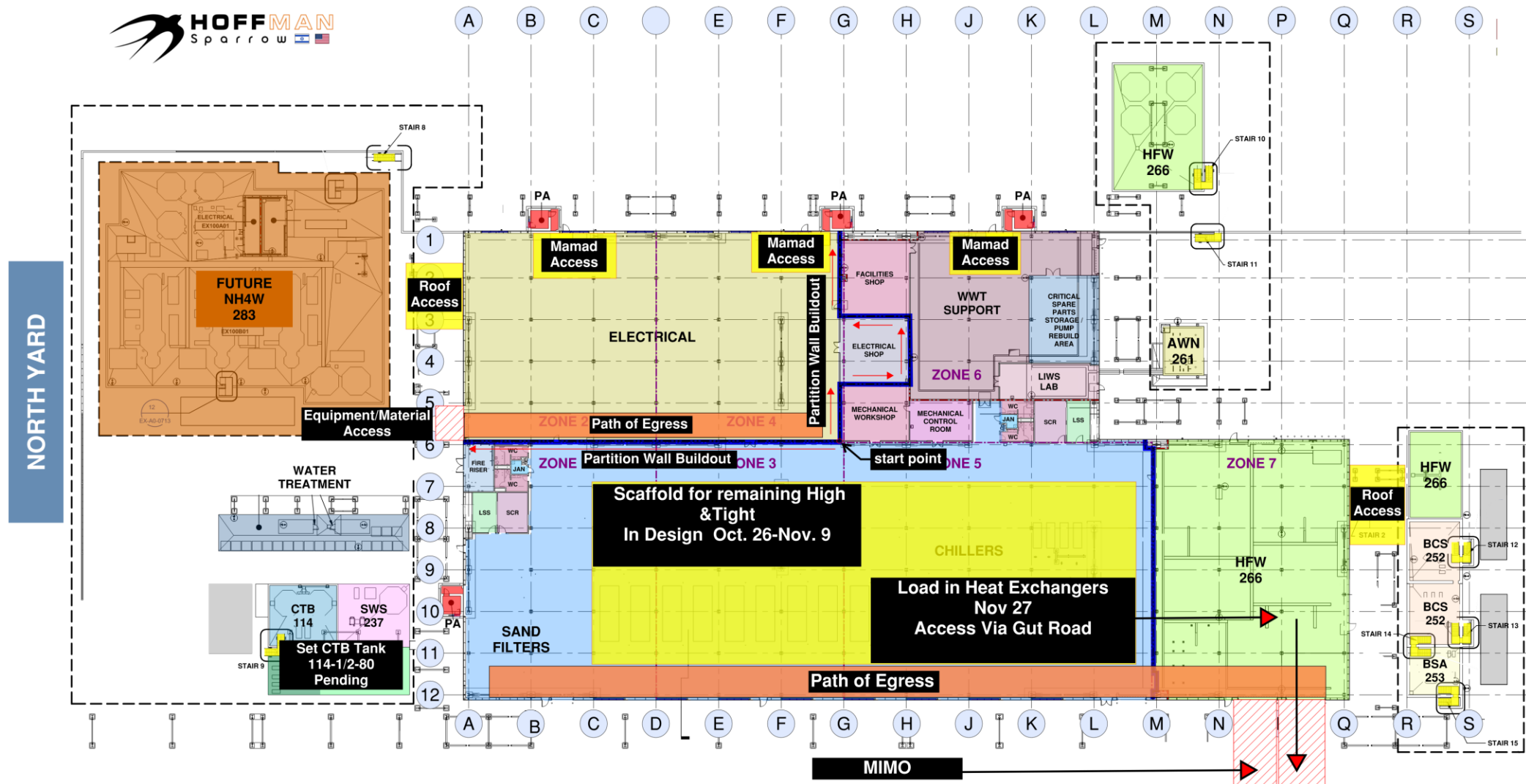
BUILDING NOTES:
1. Fire Alarm System
Devices are actively monitored
Boiler room and Roof Charged with Water WW43
2.

CUB 1 – EXTERIOR/ROOF

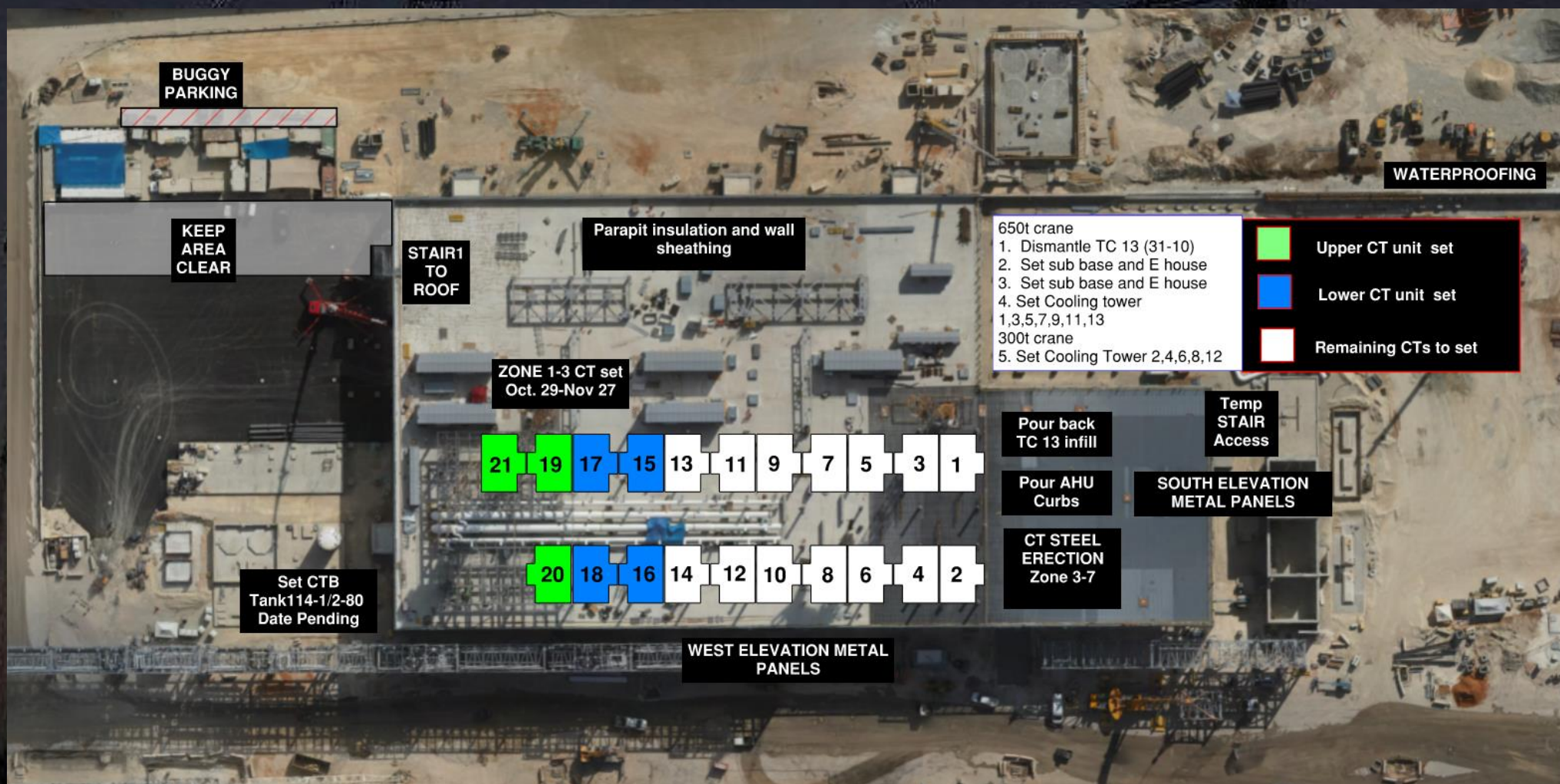


CUB 2- Load in and H&T

CUB 2 COORDINATION MAP



CUB 2 – EXTERIOR/ROOF

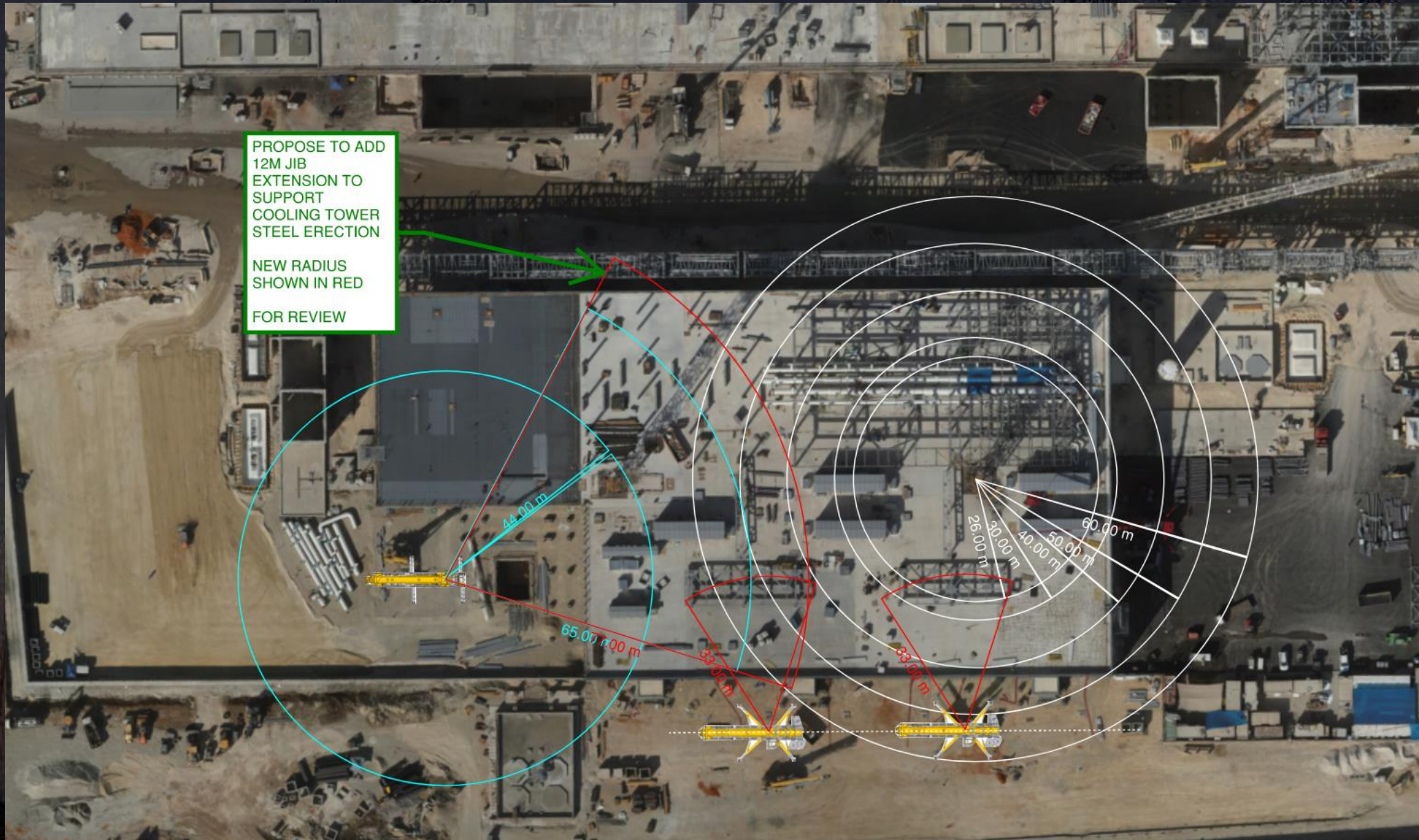


CUB 2 – Crane Logistics

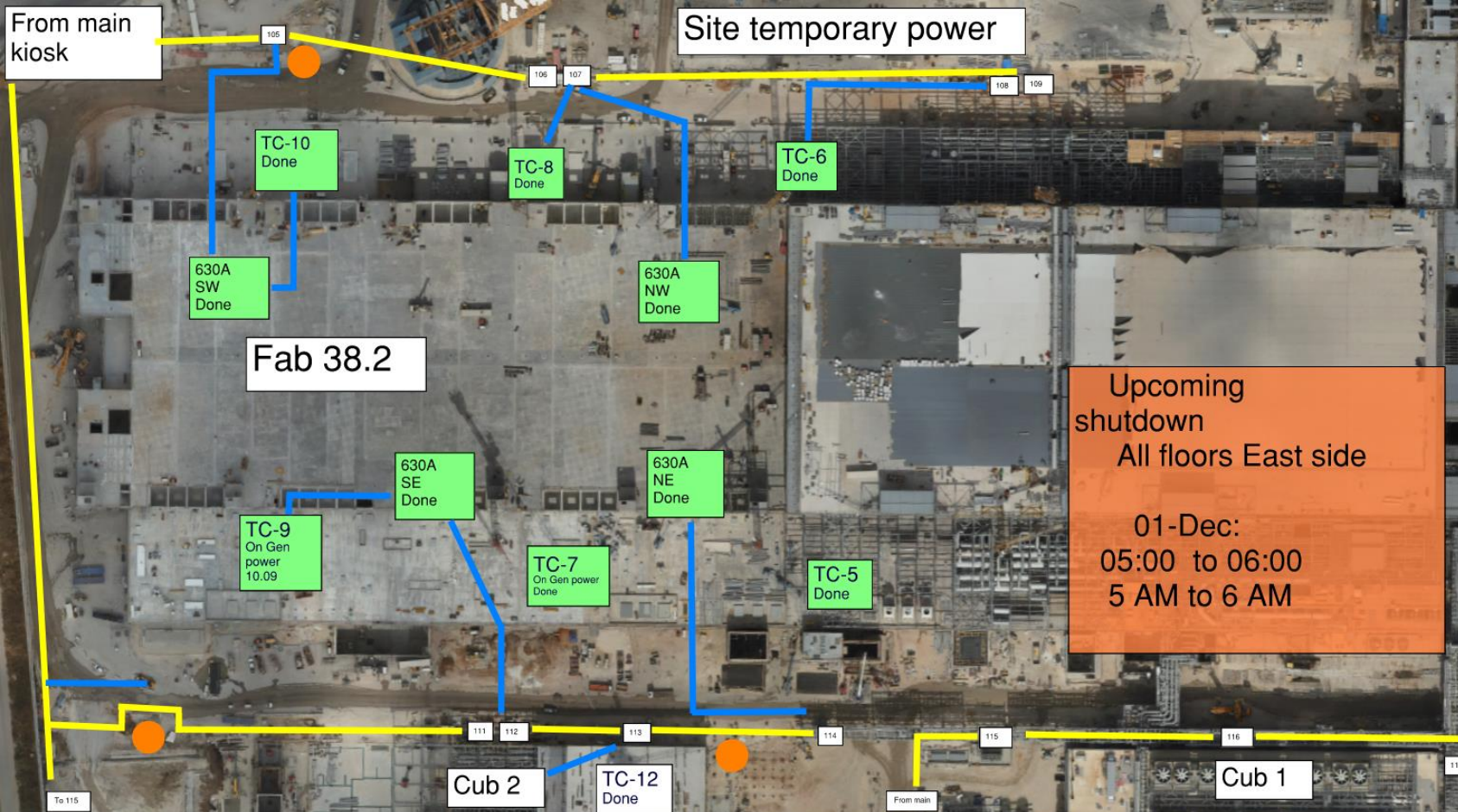
PROPOSE TO ADD
12M JIB
EXTENSION TO
SUPPORT
COOLING TOWER
STEEL ERECTION

NEW RADIUS
SHOWN IN RED

FOR REVIEW







Legend :

- 22KV Line
- 400V Line
- 109 - Kiosk
- Lift Station

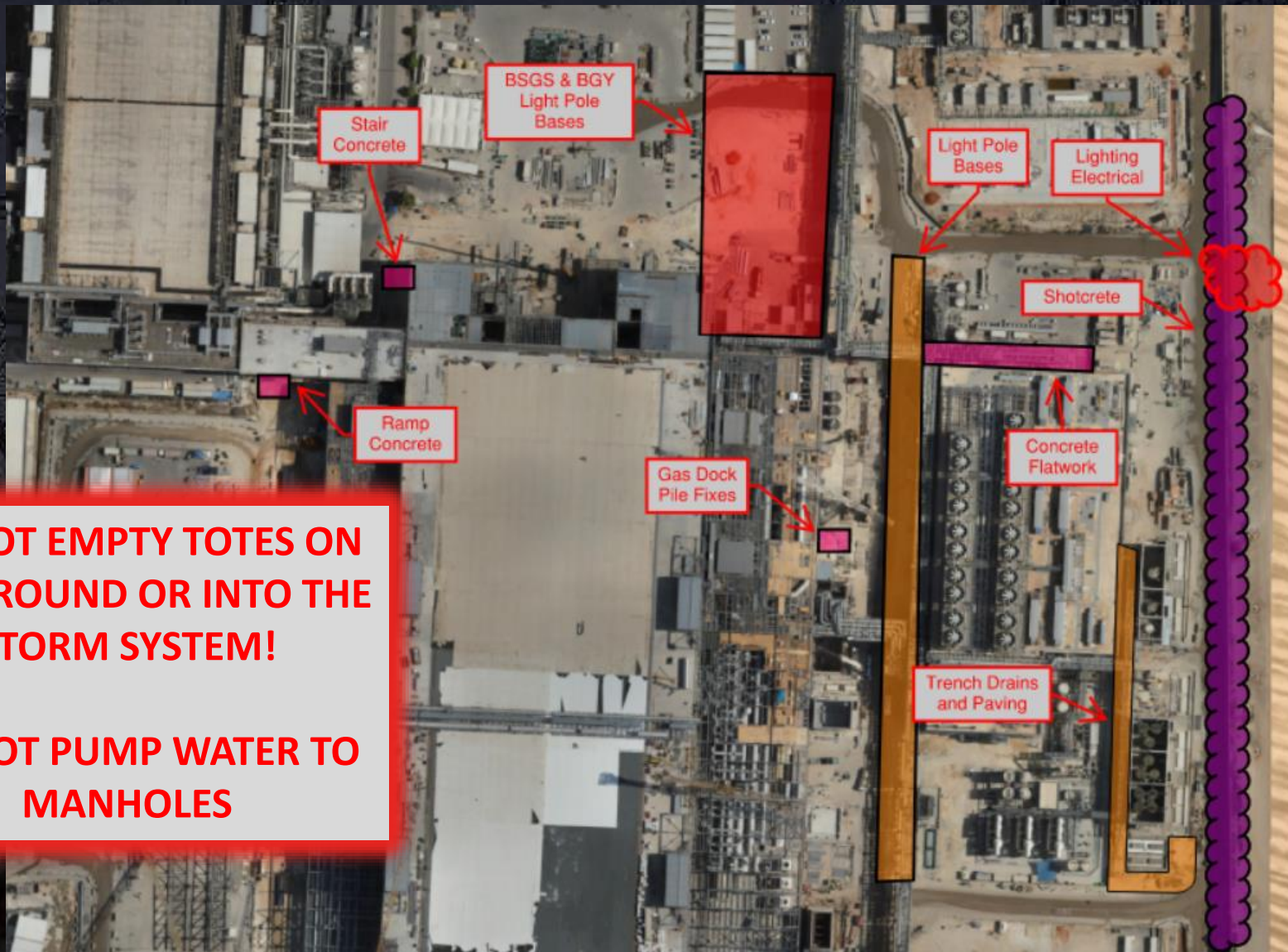
Upcoming shutdown
All floors East side

01-Dec:
05:00 to 06:00
5 AM to 6 AM

Daily Coordination Meeting

Site Logistics

North



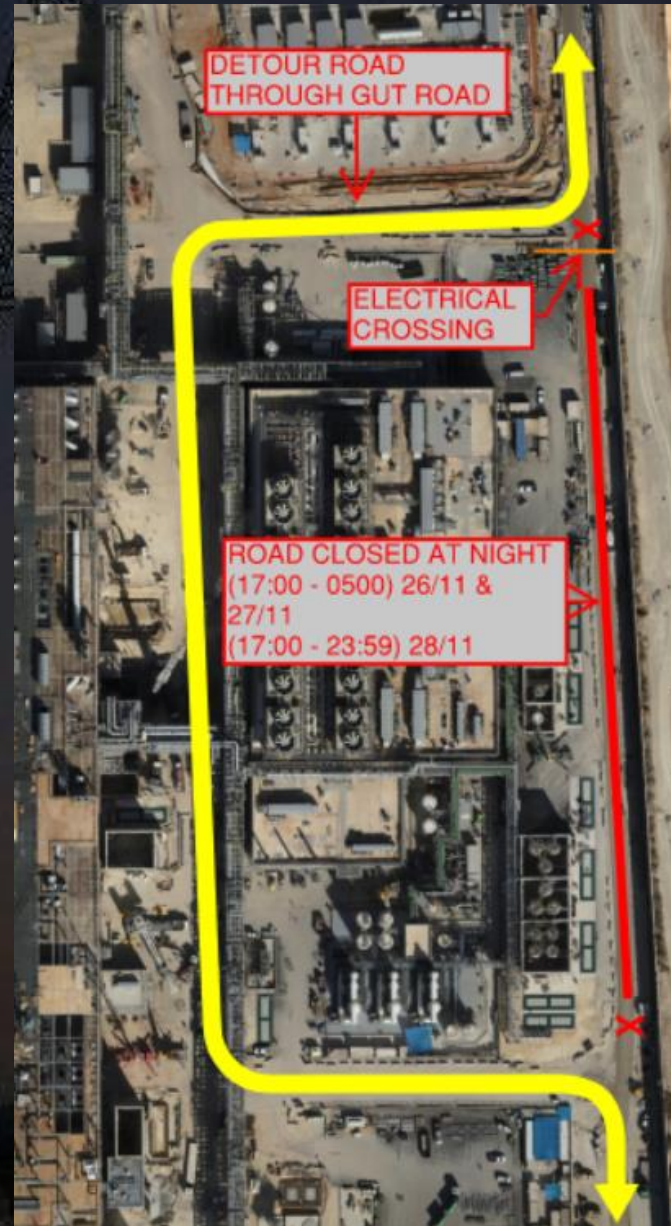
**DO NOT EMPTY TOTES ON
THE GROUND OR INTO THE
STORM SYSTEM!**

**DO NOT PUMP WATER TO
MANHOLES**

Daily Coordination Meeting

Site Logistics

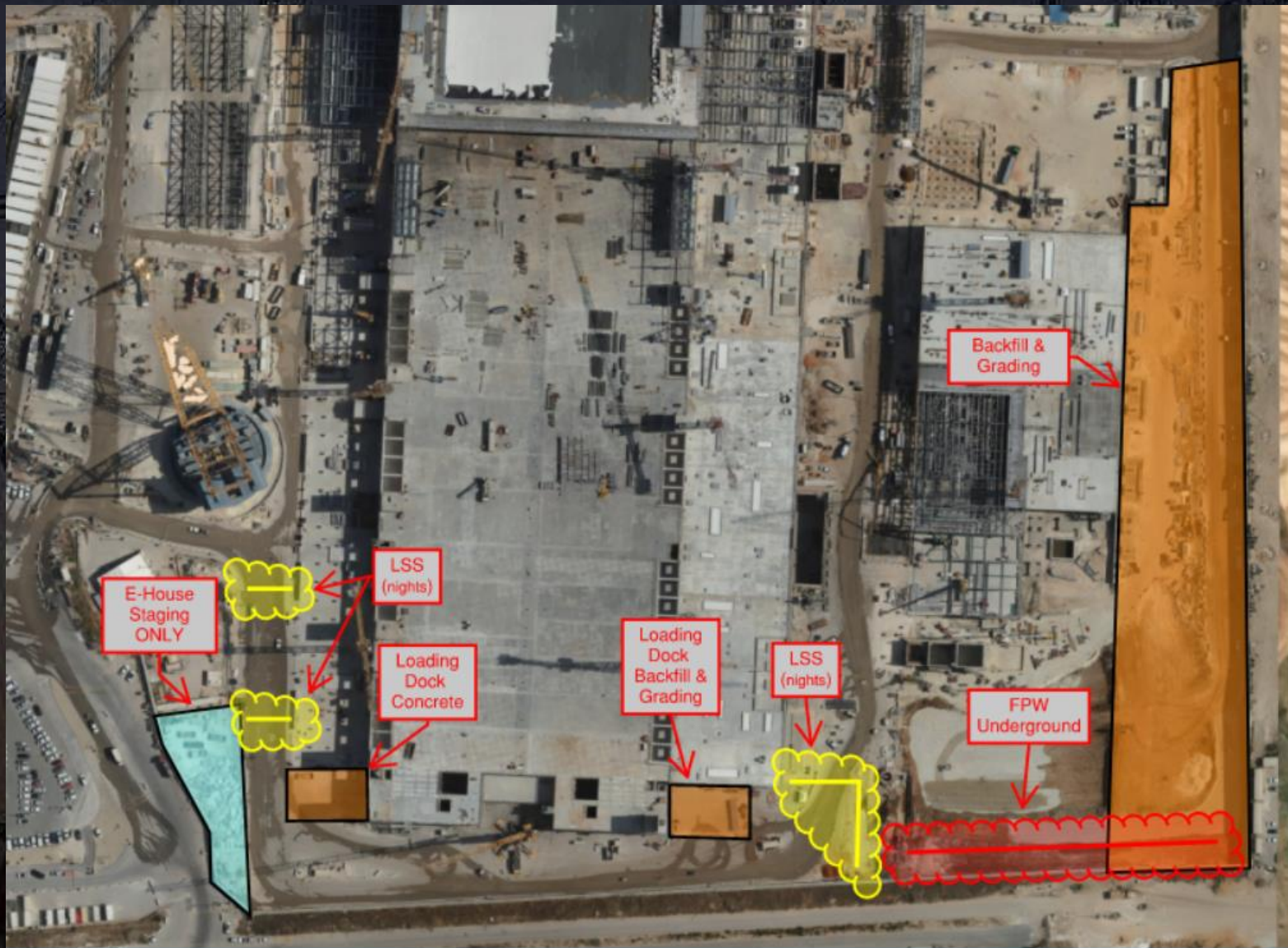
North Detour



Daily Coordination Meeting

Site Logistics

South



Report all Incidents and Injuries

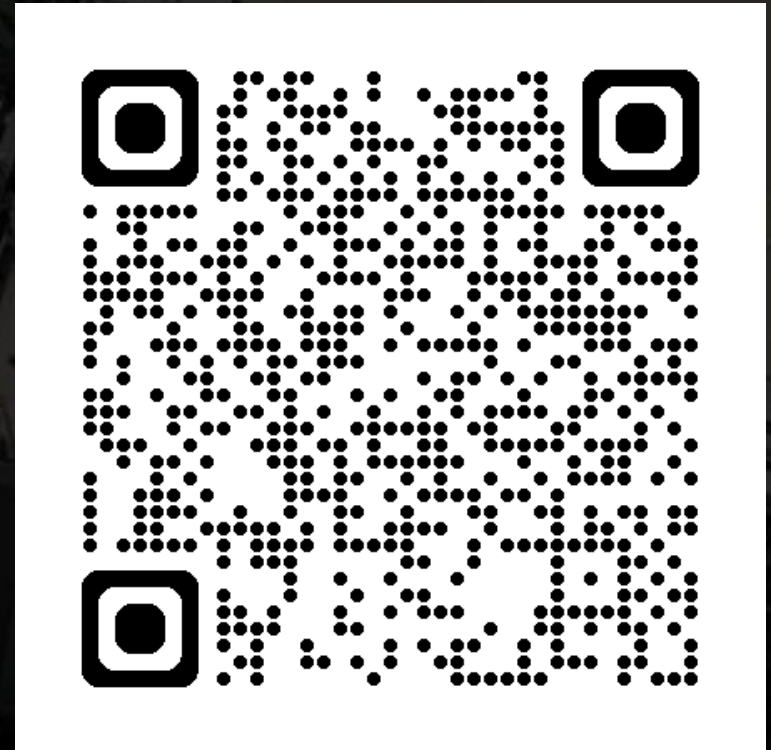
- All incidents and injuries must be reported, regardless of severity.
- These need to be reported as soon as they occur so that care can be given, accurate information can be gathered, and unsafe conditions can be addressed.
- If a worker is injured, a supervisor must accompany them to the nurse's trailer. The worker must be accompanied by someone that speaks English or Hebrew.
- It is not acceptable to report incidents and injuries late.

Line of Fire Campaign Activity

Stop and Think

Click on the link or scan the QR code. Ask a worker the 3 questions and fill out the survey

1. What pinch points or line of fire hazards are present with your work?
2. What pinch point or line of fire hazard do you not control?
3. What is one way you are going to change your behavior to better mitigate pinch points and line of fire hazards in your work?



Daily Coordination Meeting



14:00 Sign In