

Daily Coordination Meeting



14:00 Sign In

Daily Coordination Meeting

General Topics:





Concrete pours for tonight

RES-16a SOMD
12:00 am

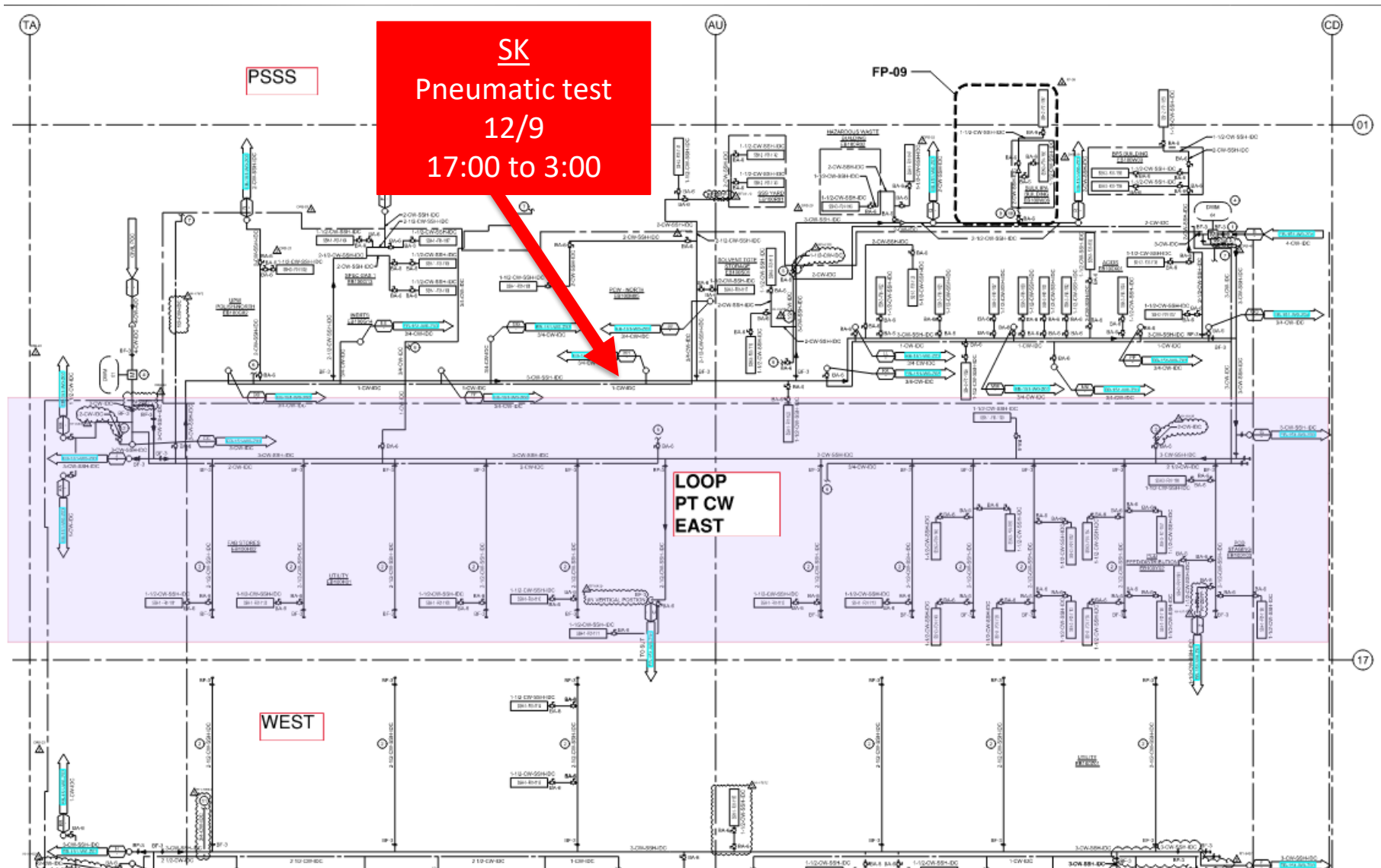
SW Loading dock
stairs/pad
4:00 am

RES-16a SOMD
12:00 am

SW Loading dock
Stairs/Pad
4:00 am

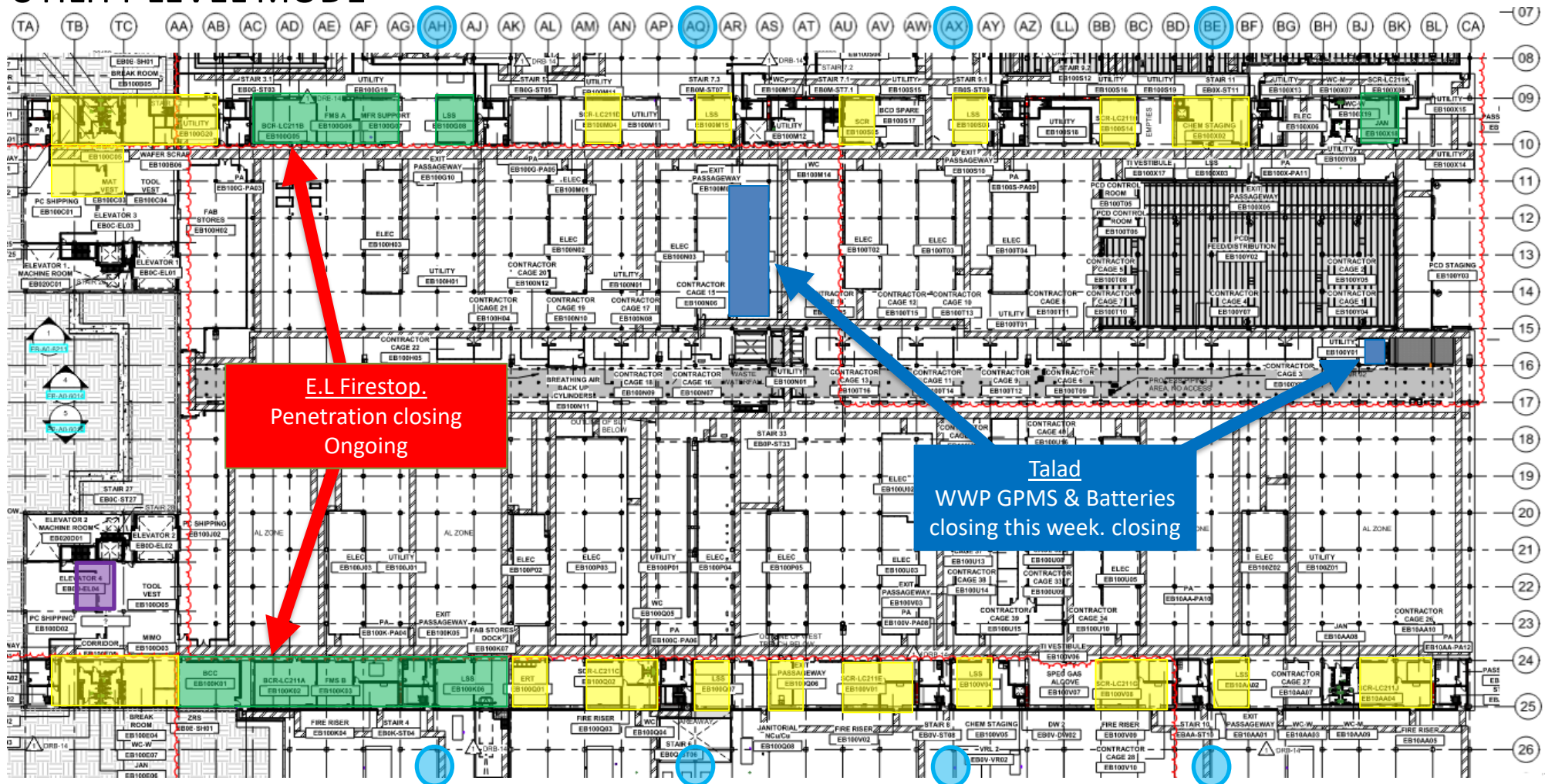


UTILITY LEVEL PRESS T.





UTILITY LEVEL MOD1



BELFOR
Mold remediation

ELRAM
Drywall install

MEP+Electrical
Ready for re-install

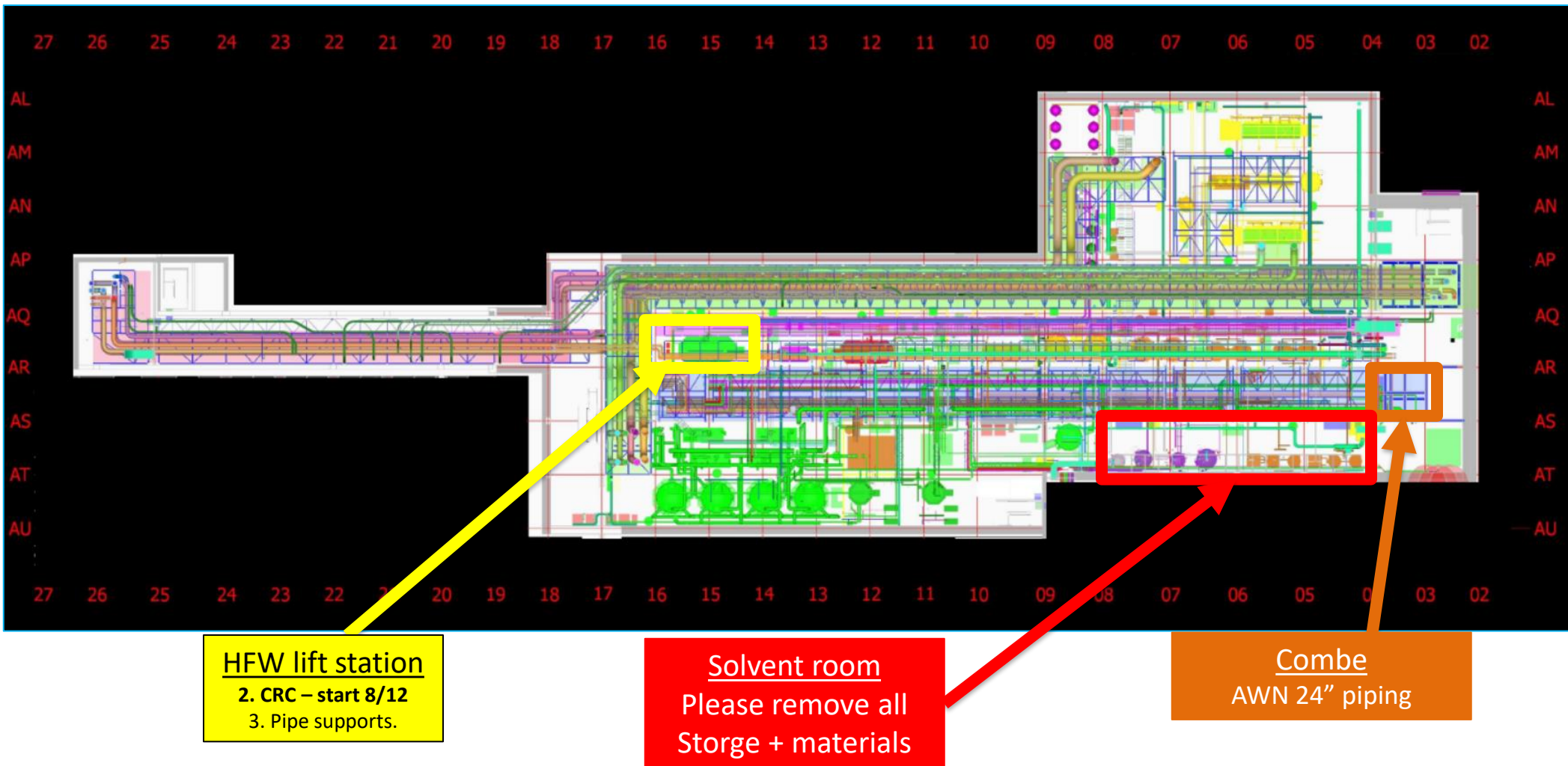


MALHIMIM
9E 9W & 8W
Ongoing

MALHIMIM
9E 9W & 8W
Ongoing
Need completion date

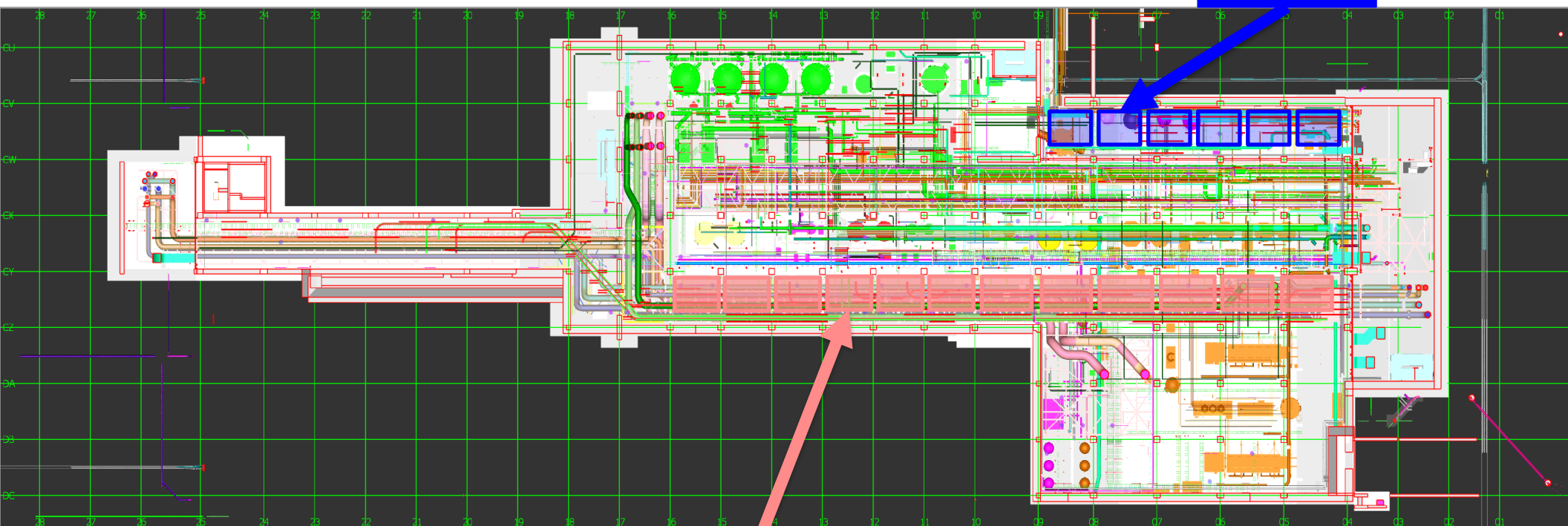


SUT 38.1 LEVEL



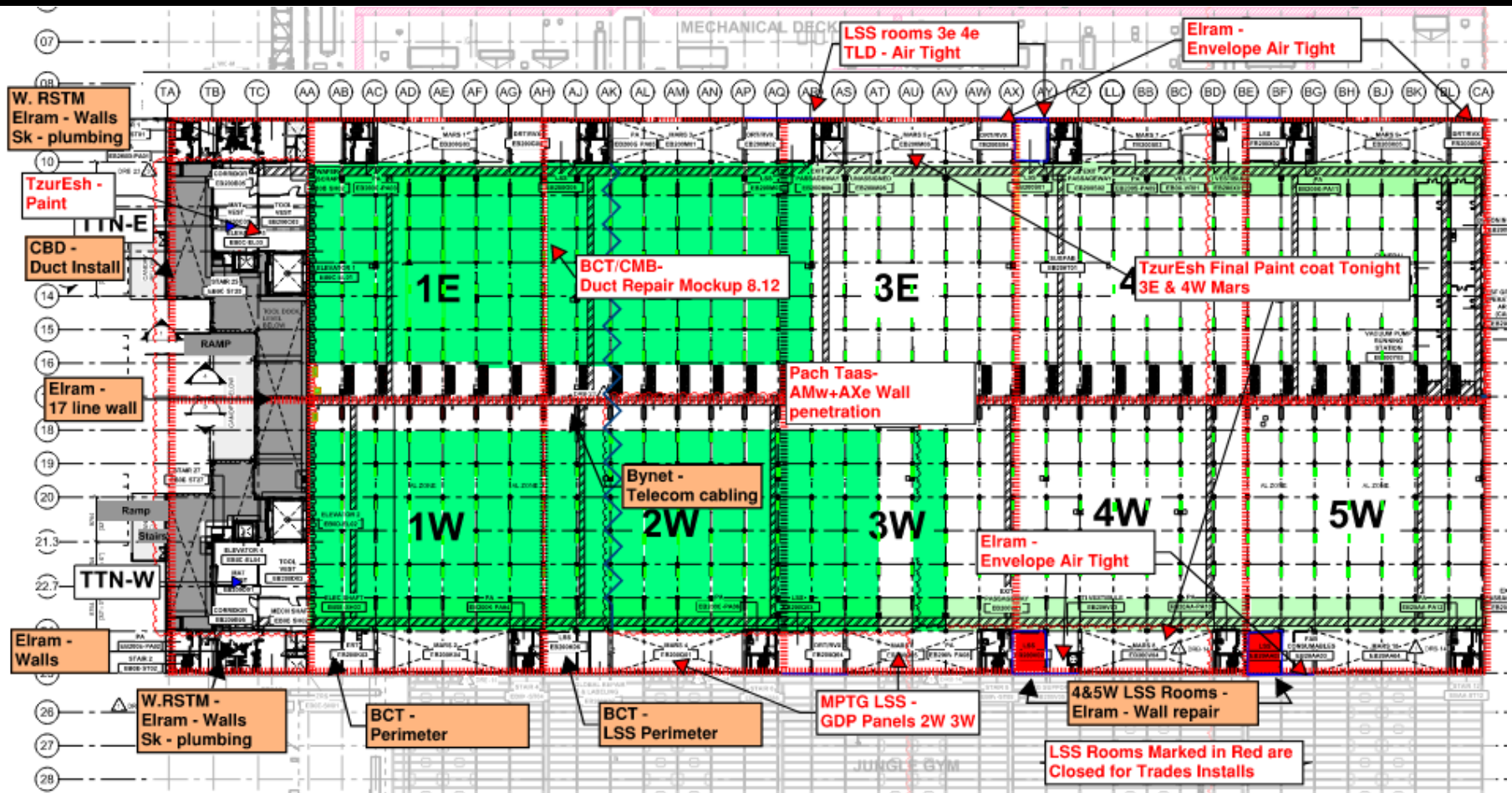
SUT 38.2 LEVEL

Rack 4b
Lifting
#1-08/12
#2-11/12
#3-16/12

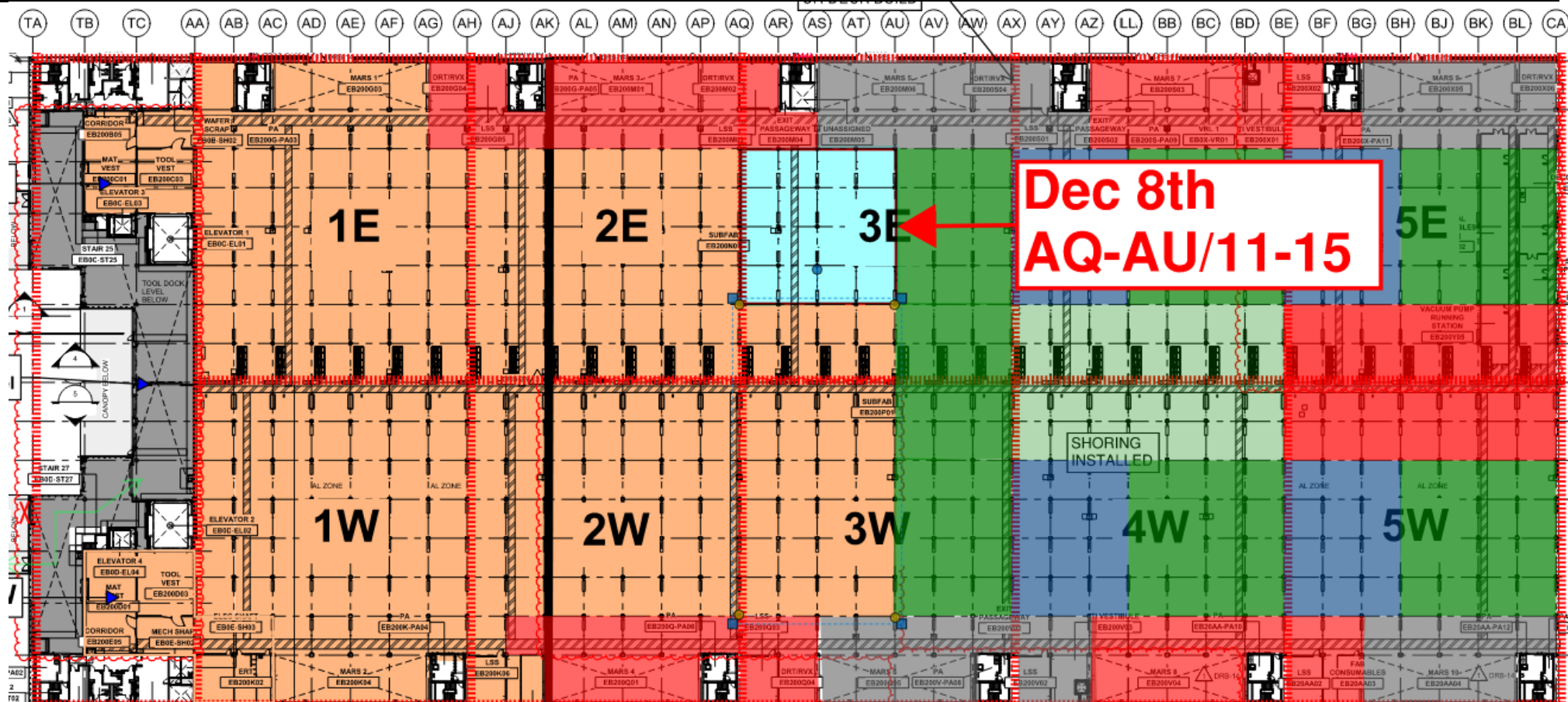


Rack 2
MIMO -
Module #4
12th of Dec

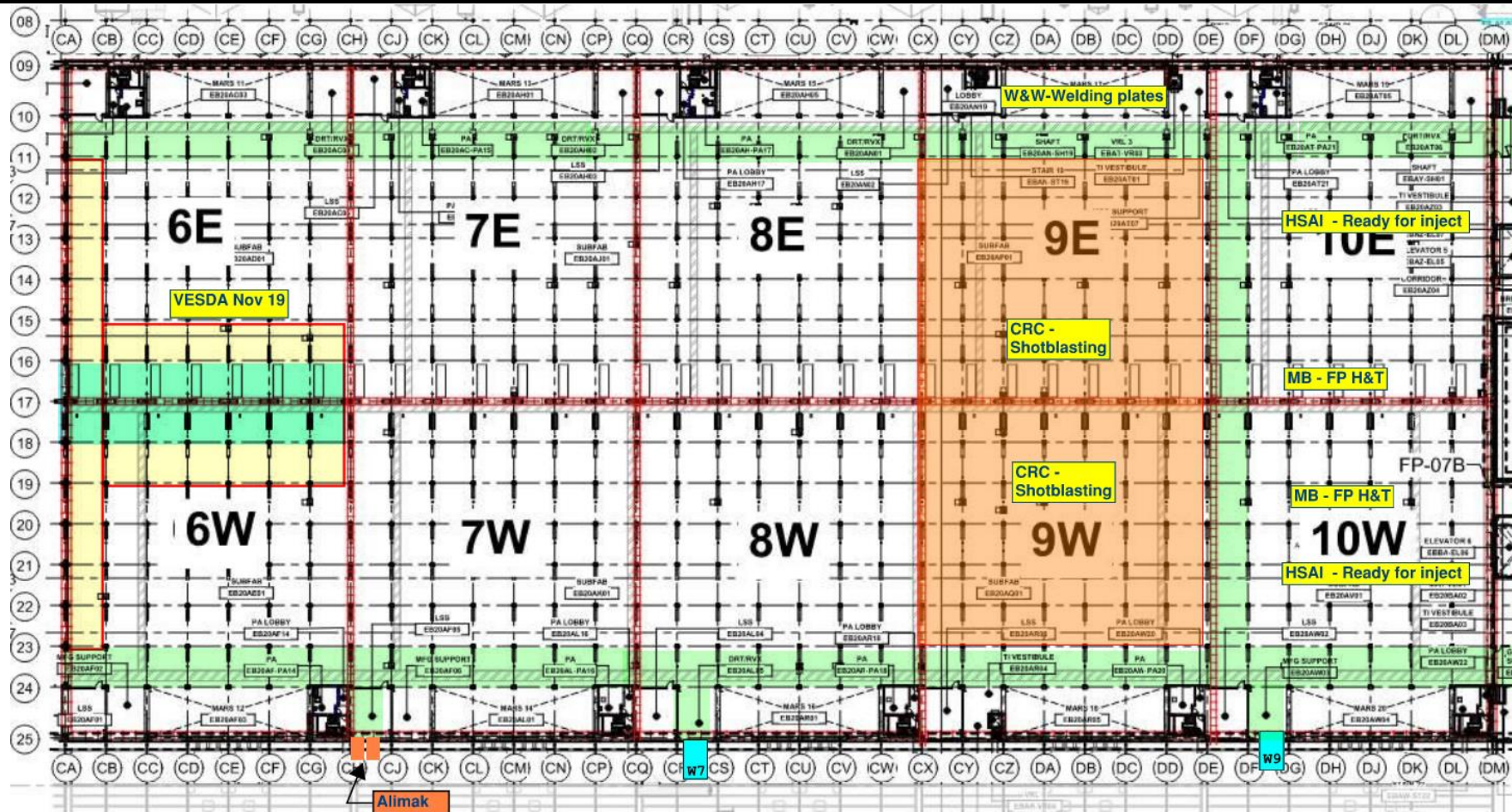
SUBFAB BUILDOUT MOD 1

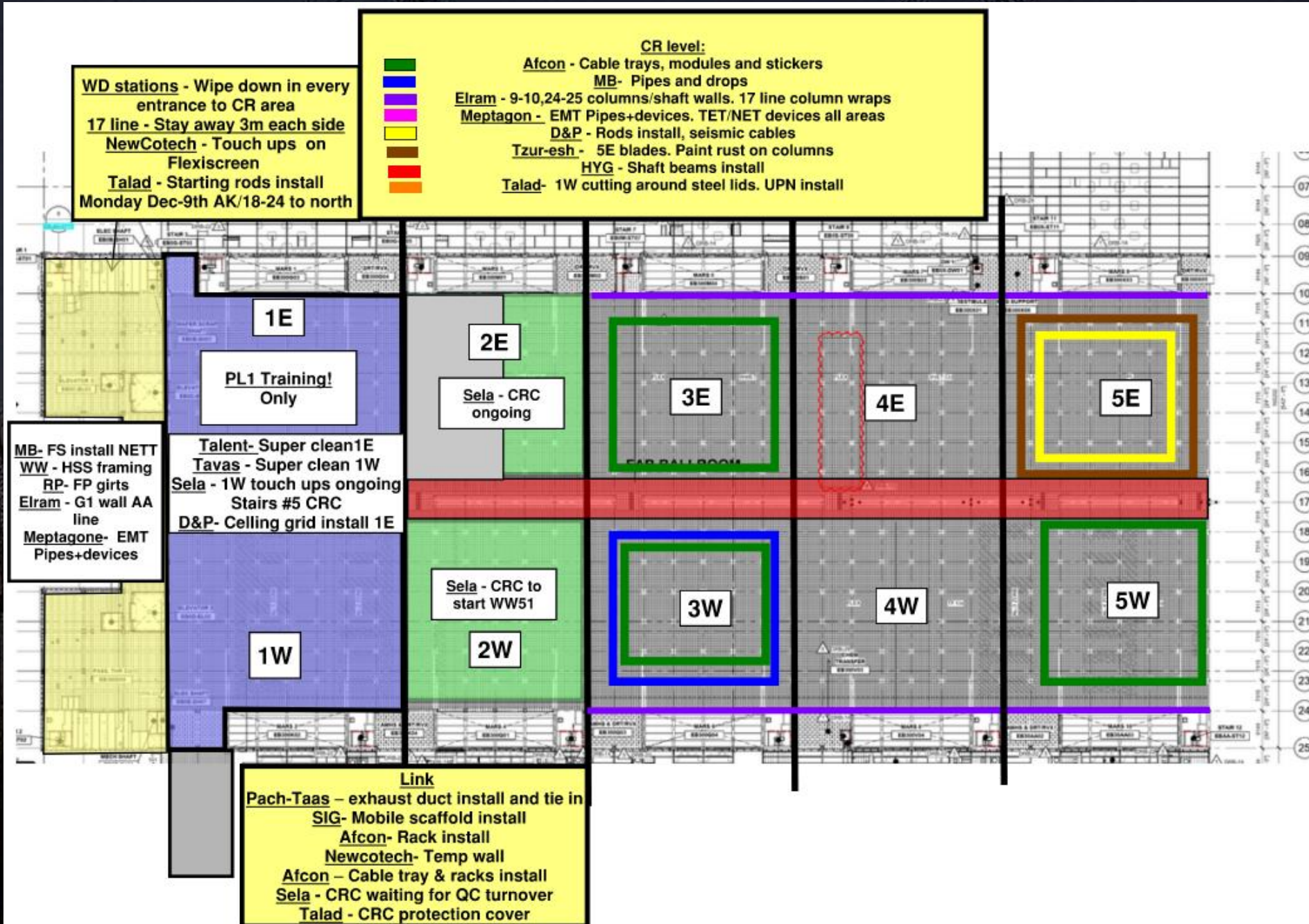


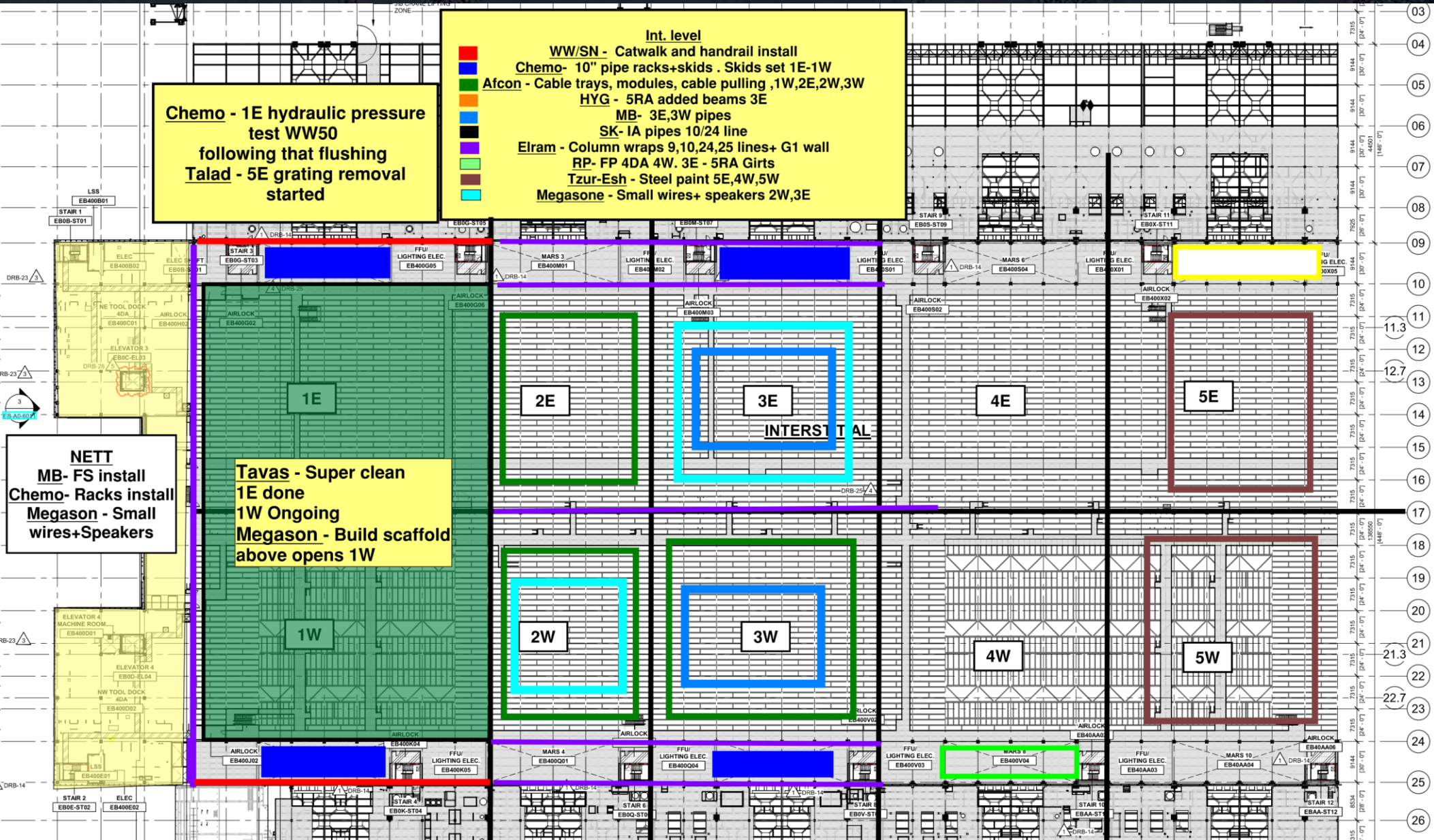
SUBFAB CRC TOPCOAT

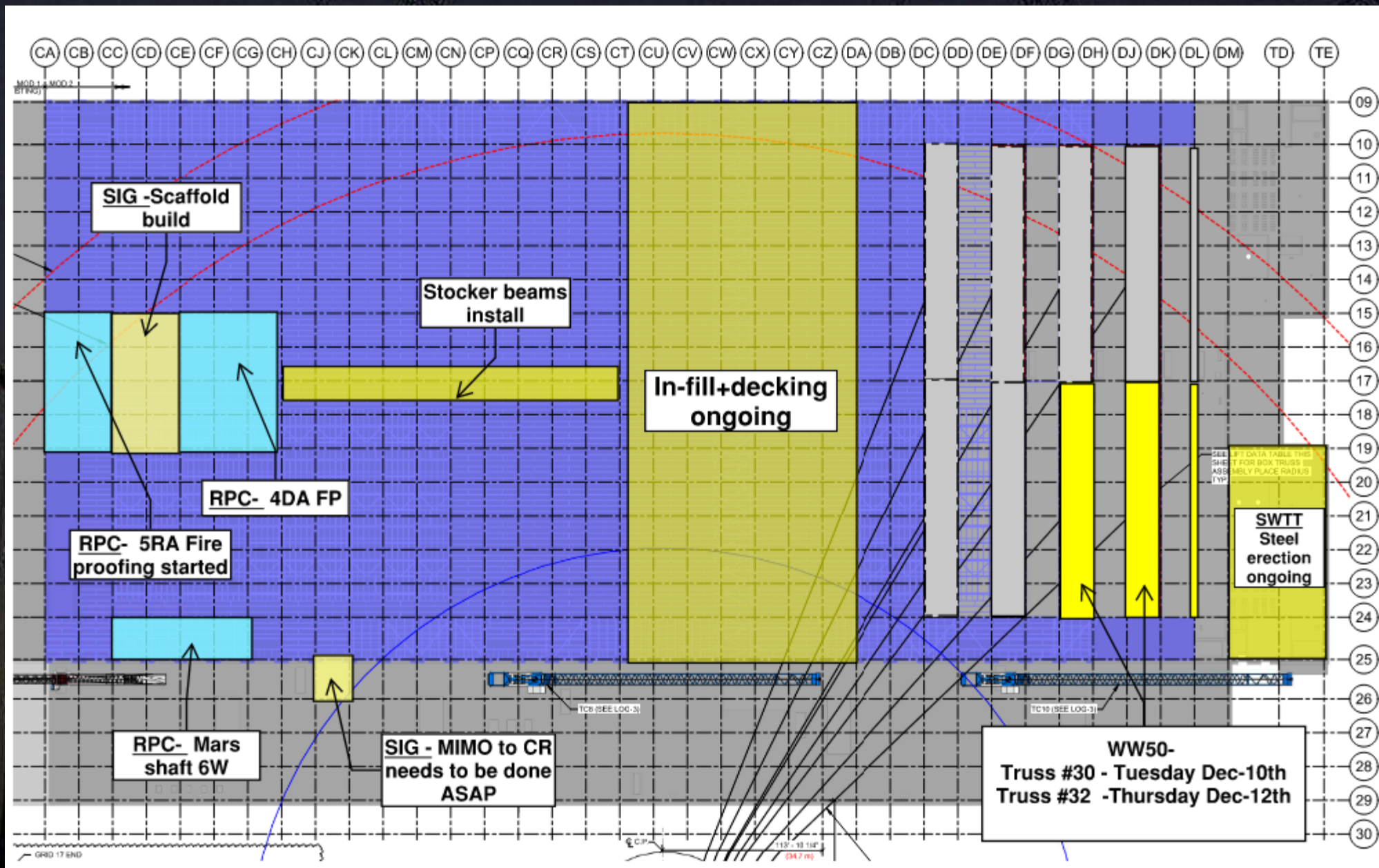
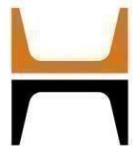


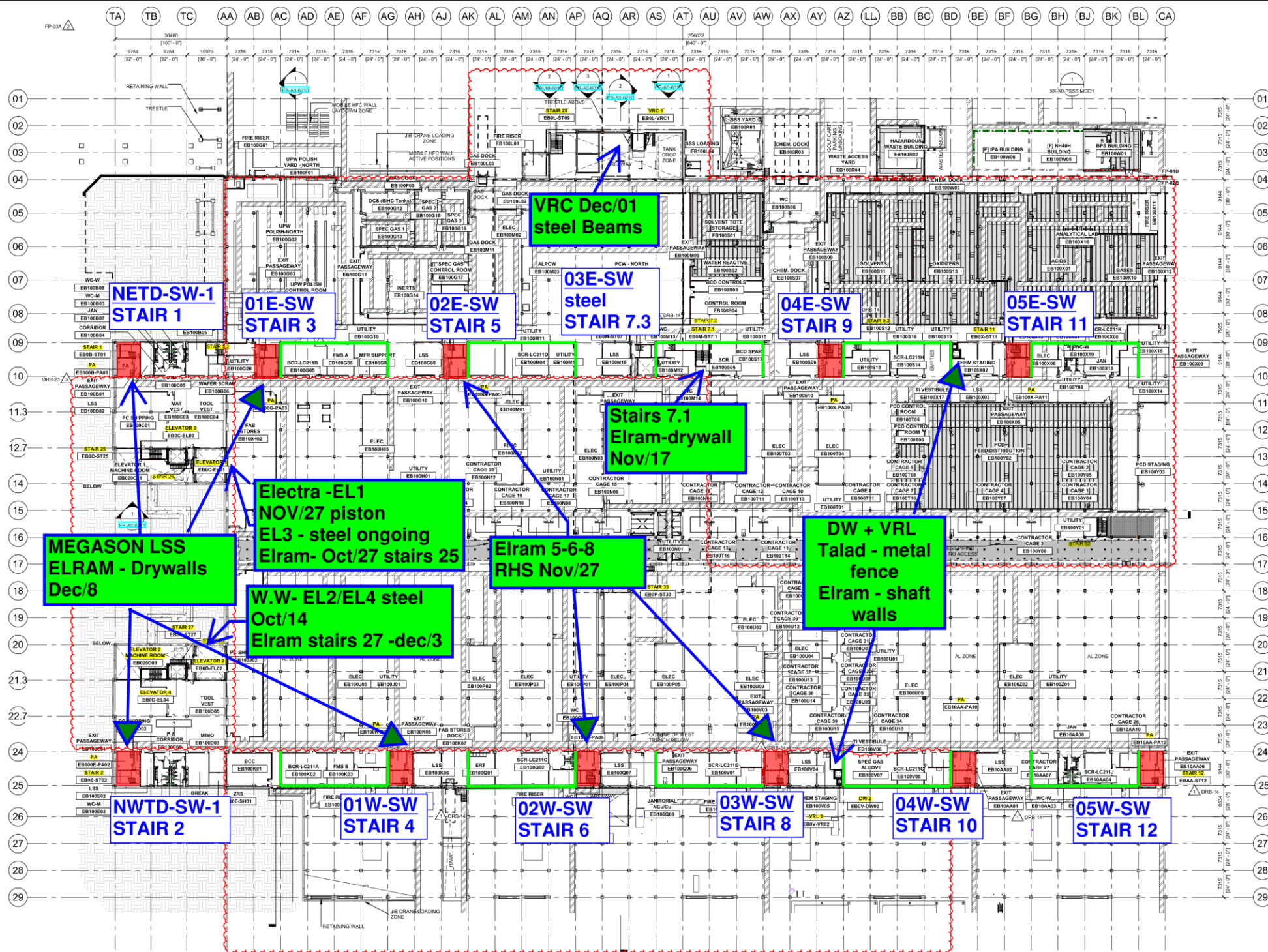
SUBFAB BUILDOUT MOD 2









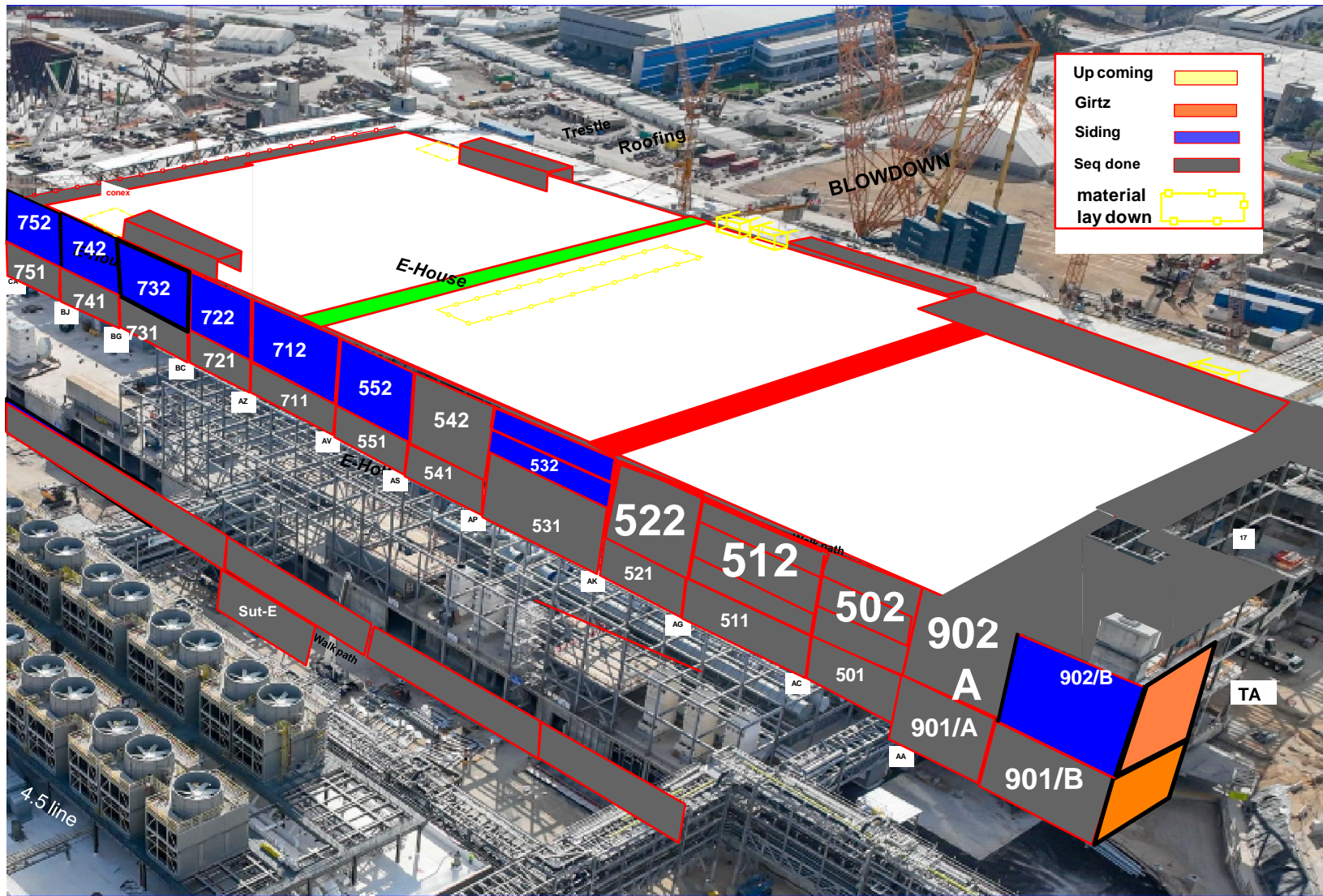


Siding - East FAB - PSSS

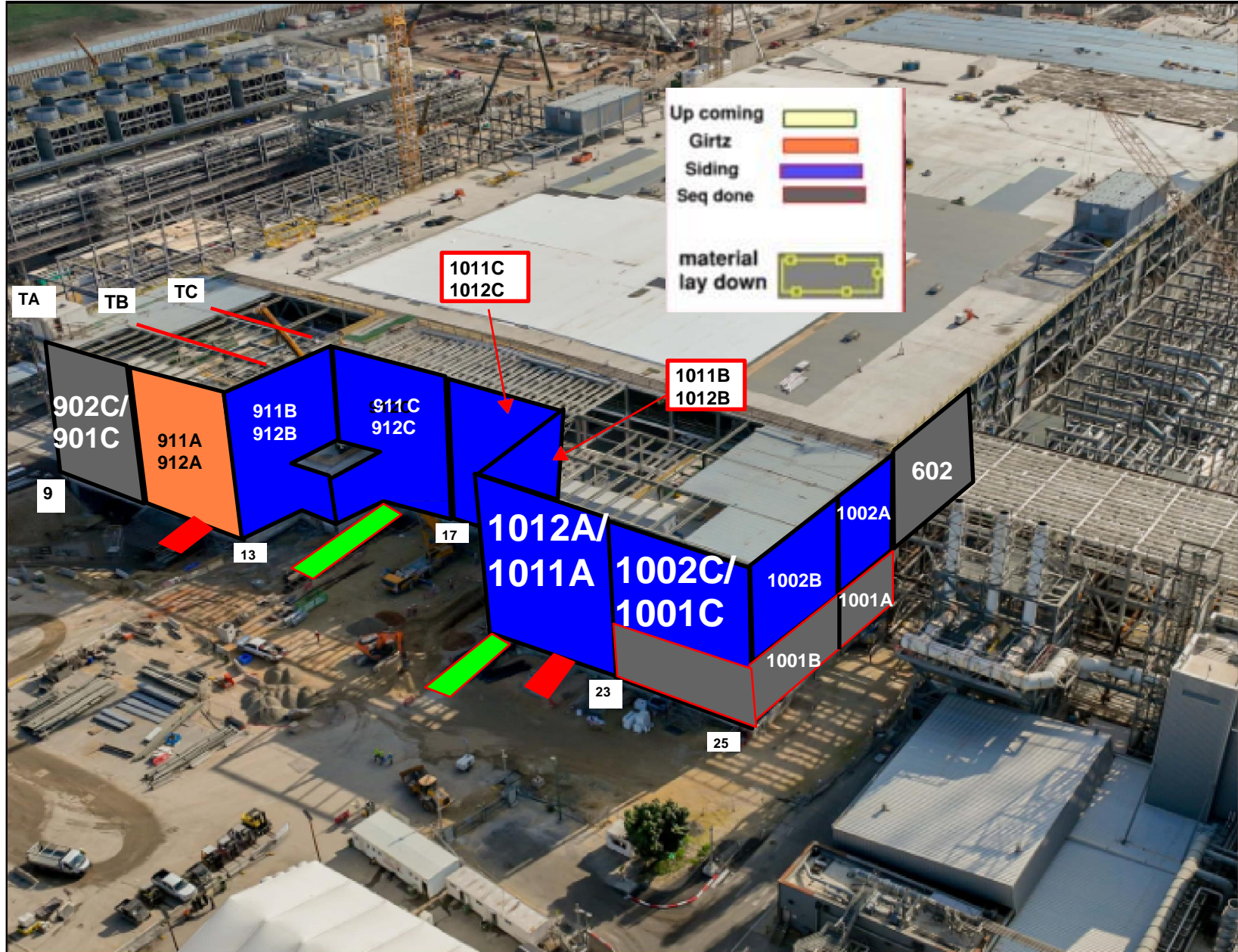
[illegible]

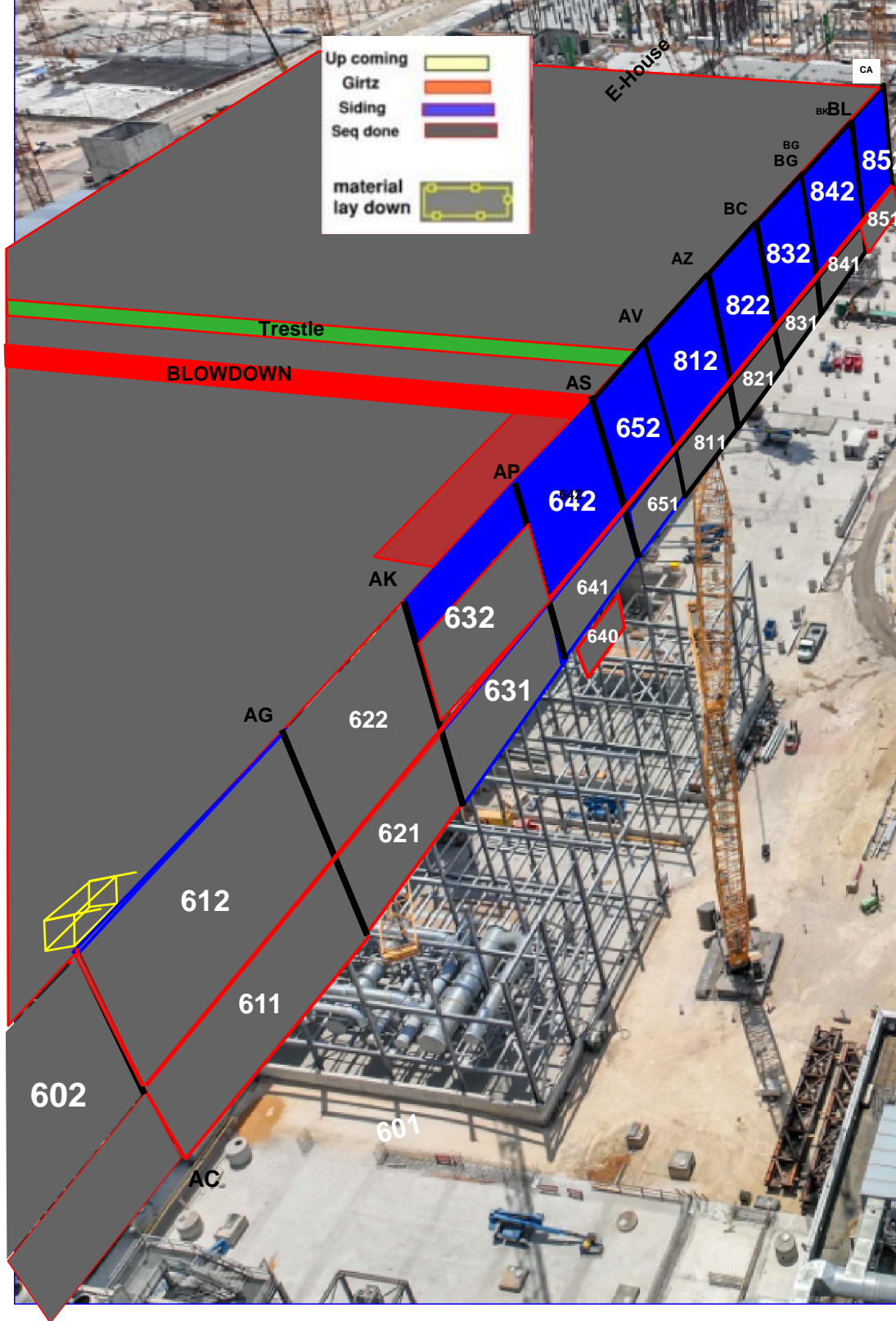
Siding - West FAB - JYG

[illegible]



Walk path

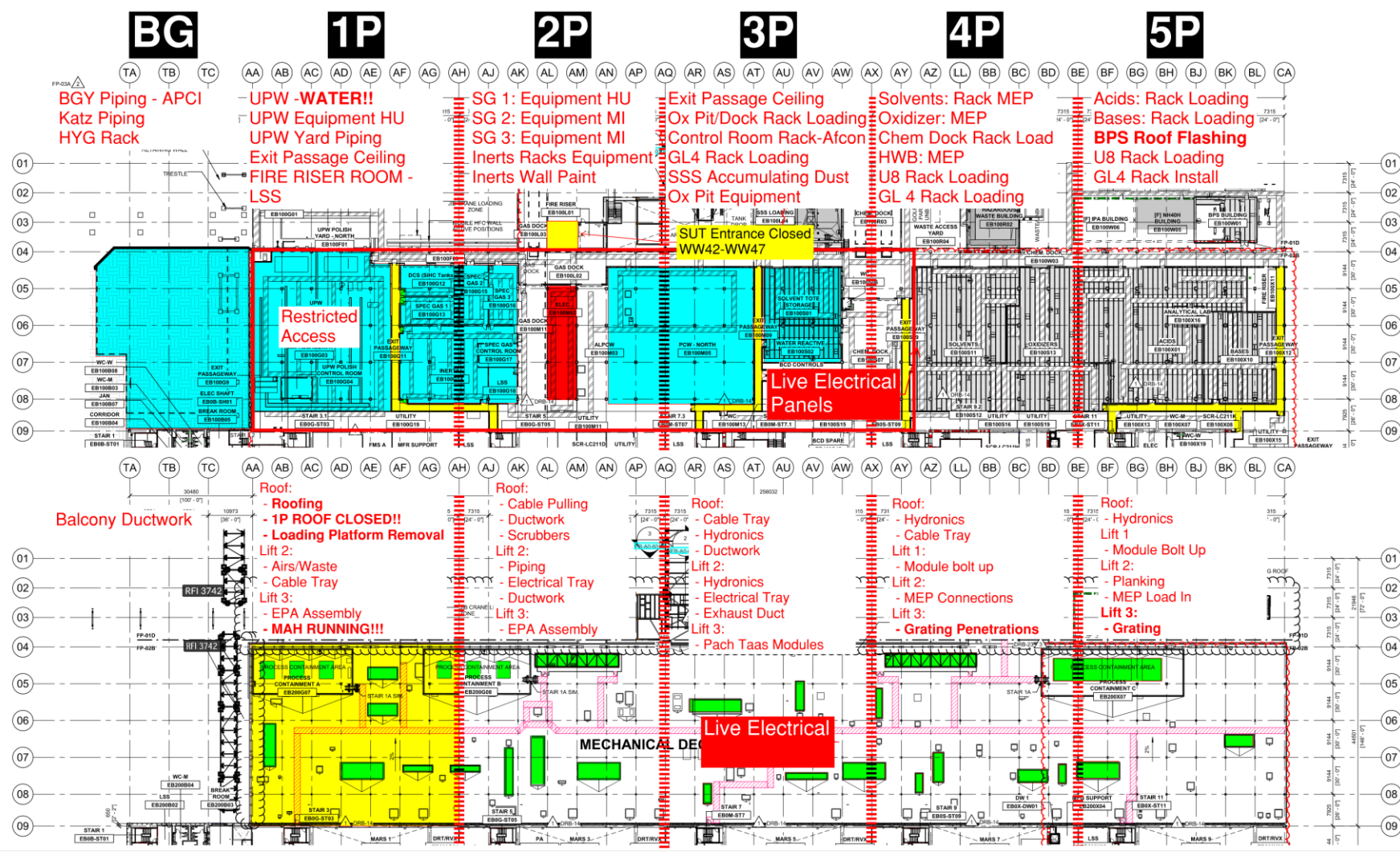




PSSS.1

Utility Level
1YA

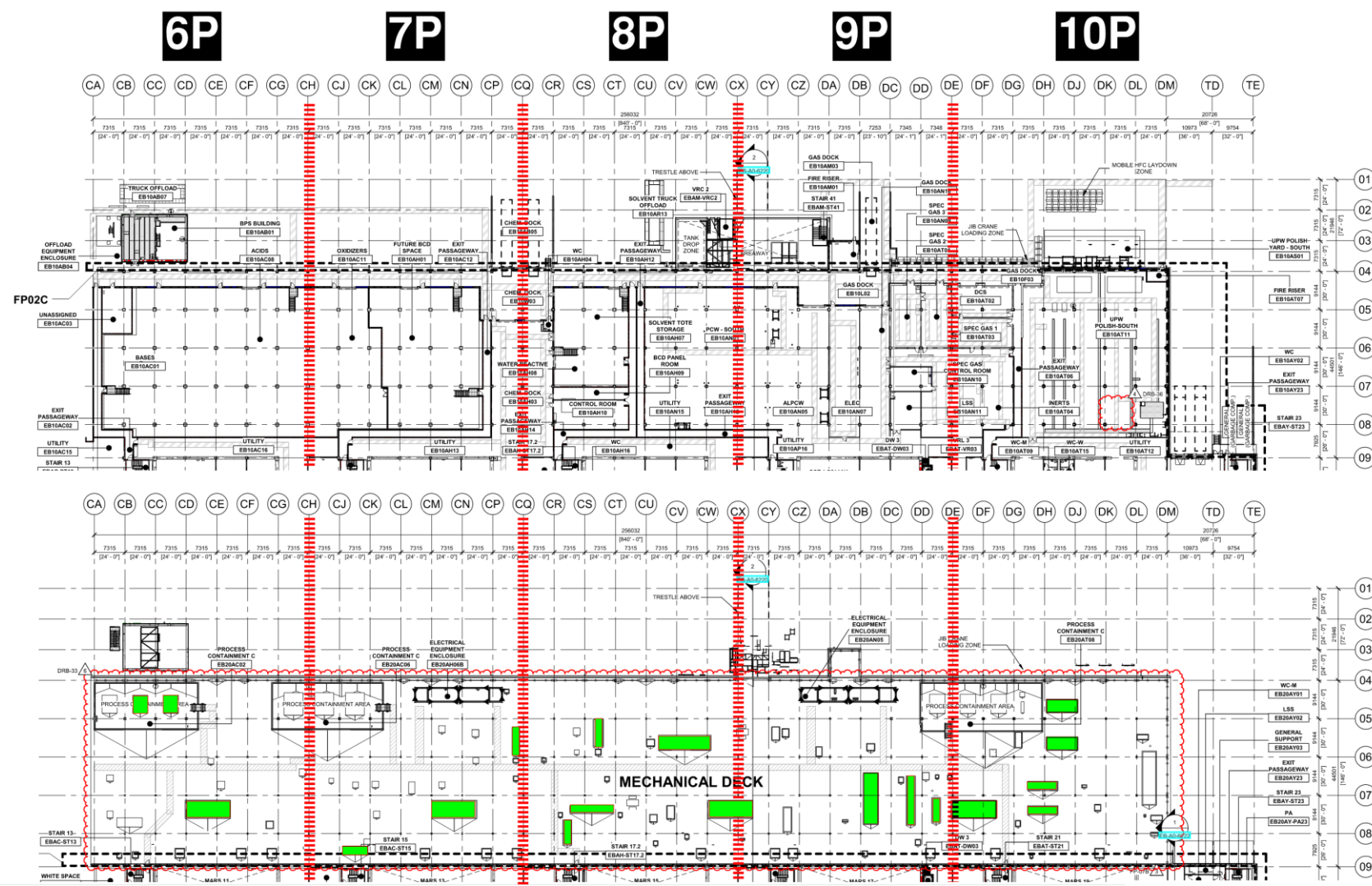
PSSS Roof
2SA

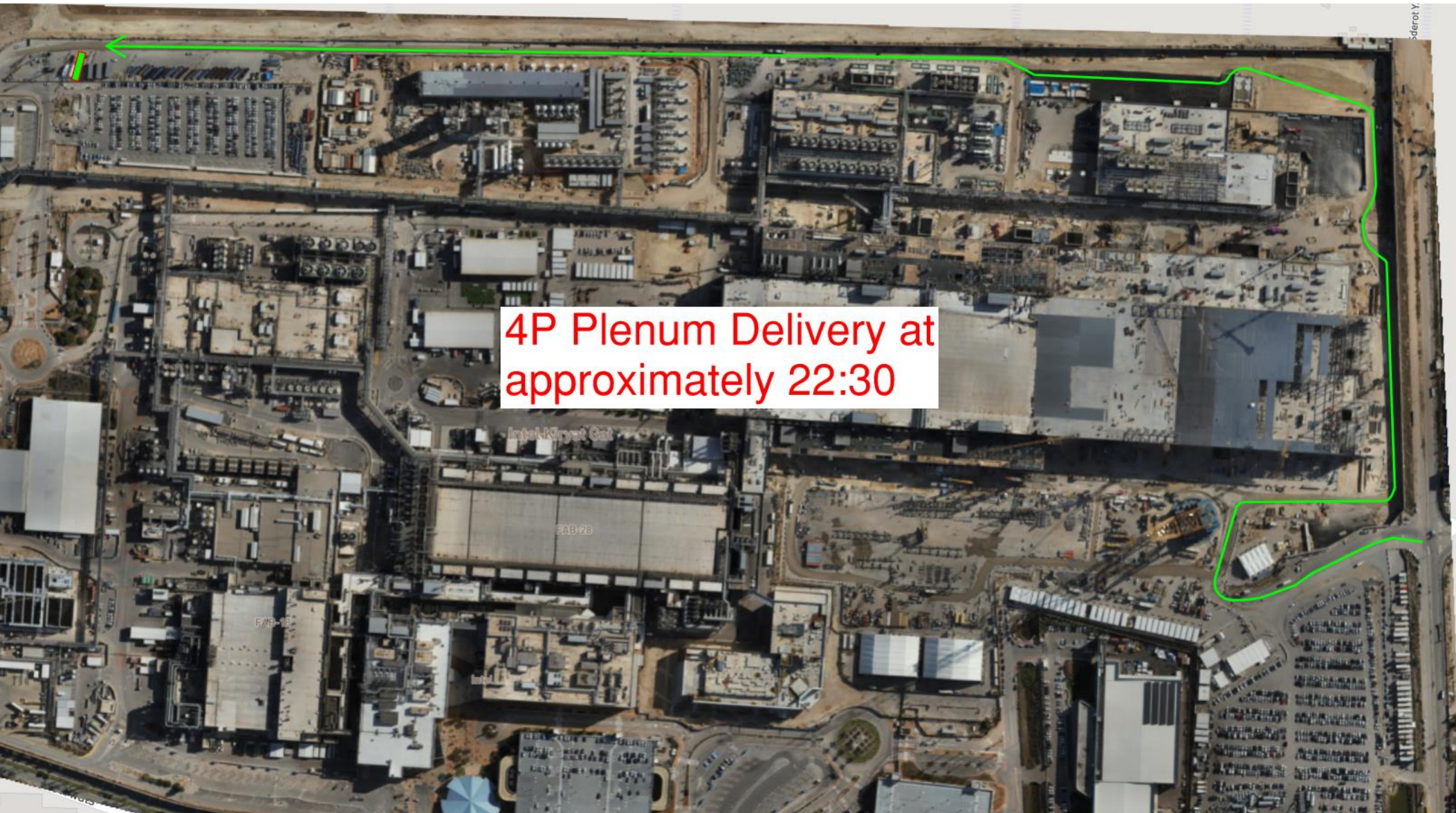


PSSS.2

Utility Level
1YA

PSSS Roof
2SA





4P Plenum Delivery at
approximately 22:30



WJG 01J, 02J LIFT 2 & 3



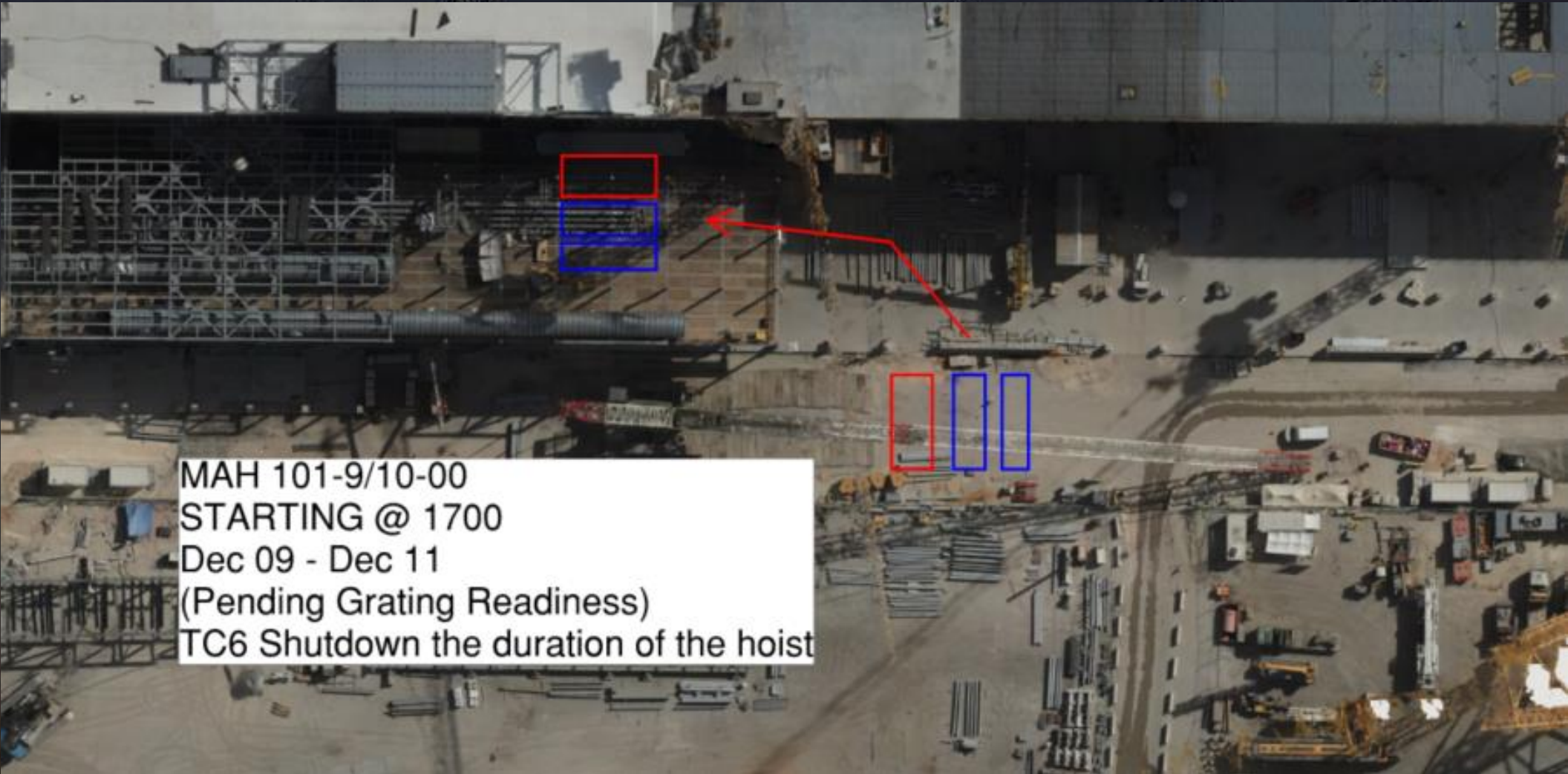


WJG 03J, 04J, 05J LIFT 2 & 3



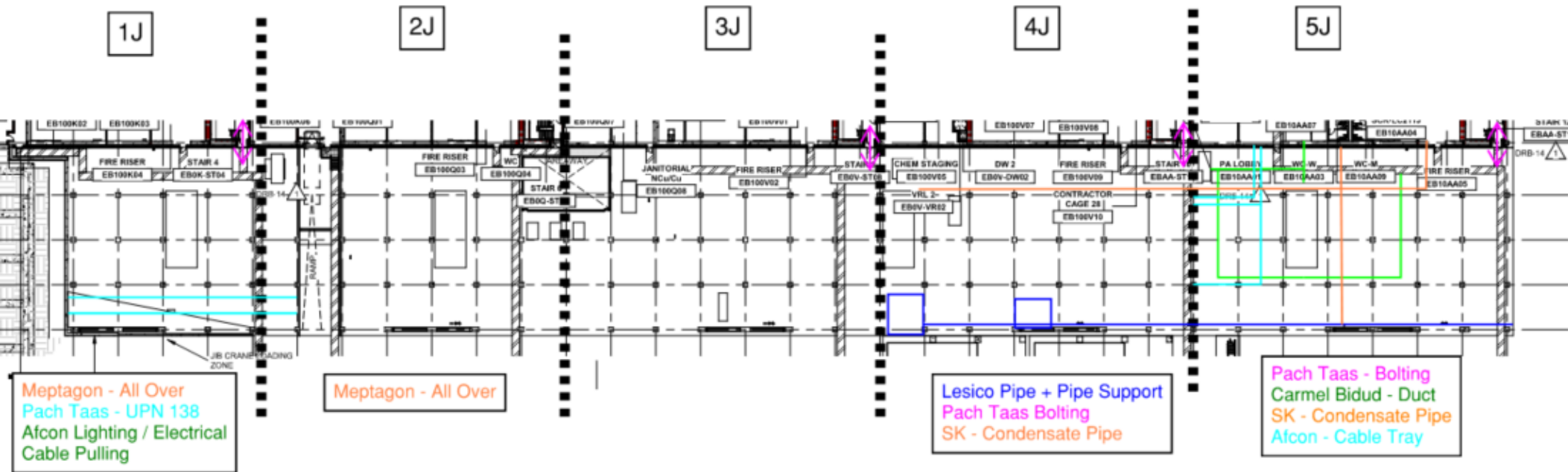


MAH101-9/10-00 Set WW50



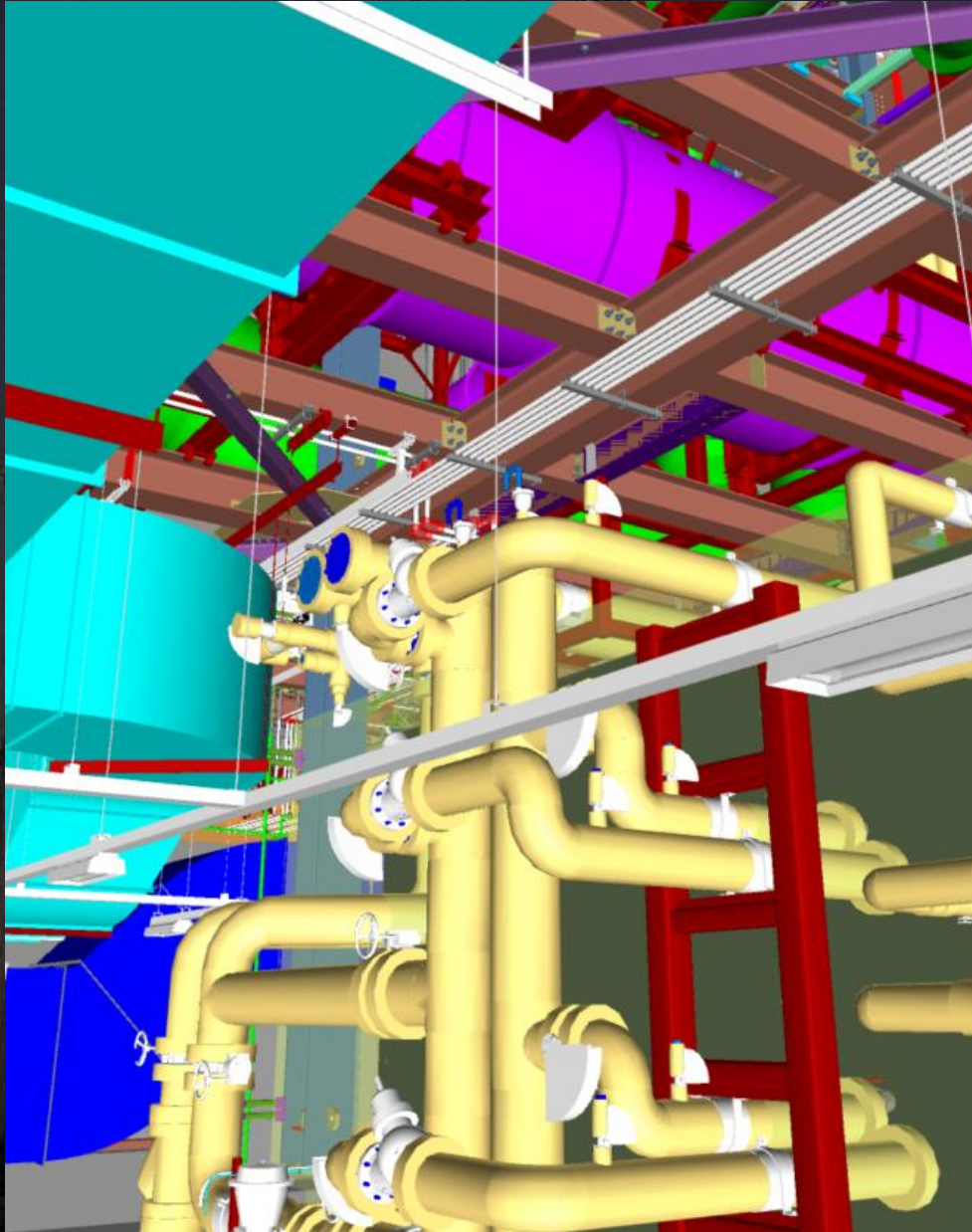


WJG UTILITY LEVEL BUILD OUT





WJG 01J Lighting Installation





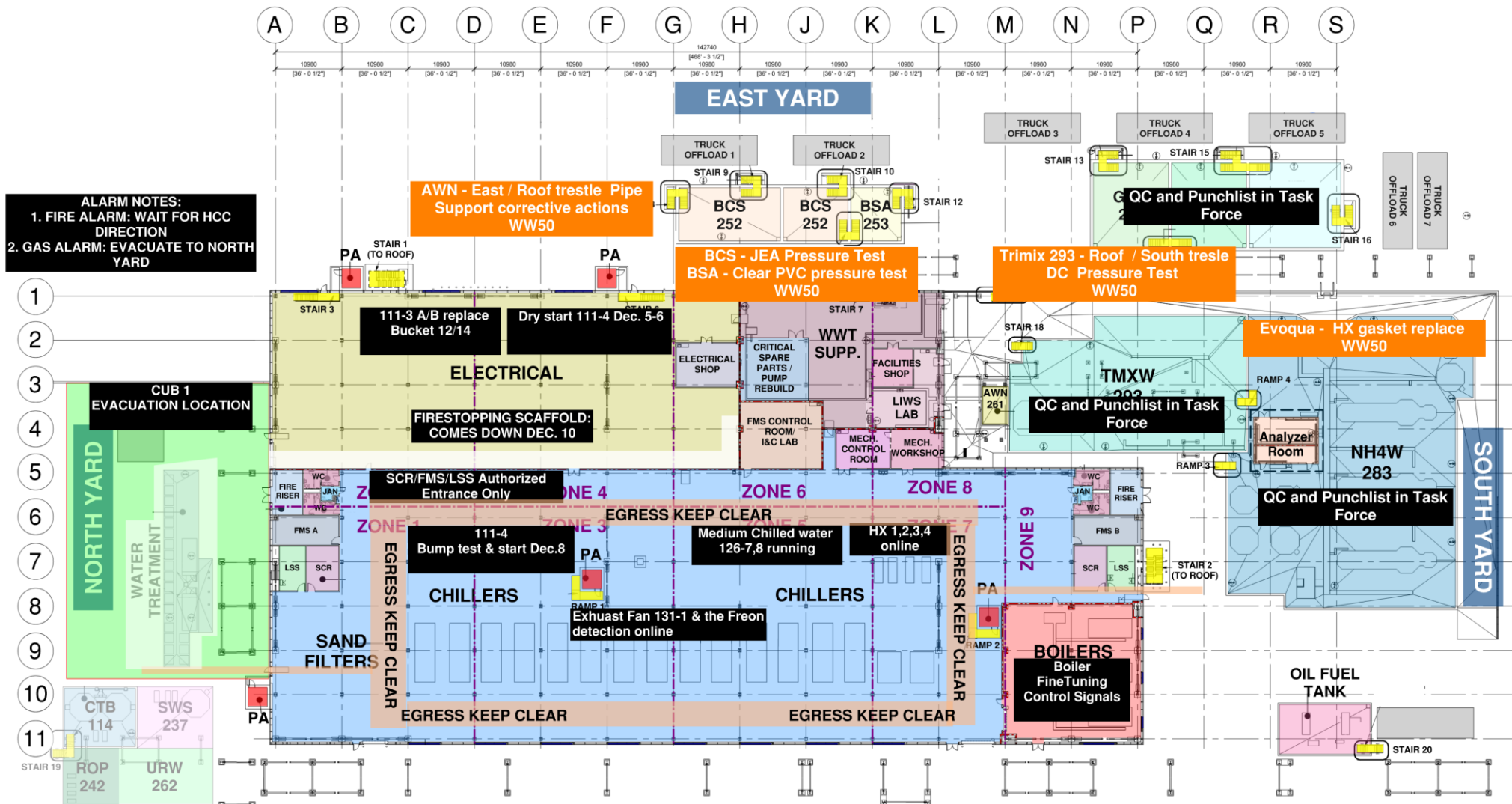
CC3800 DEMOB WW51



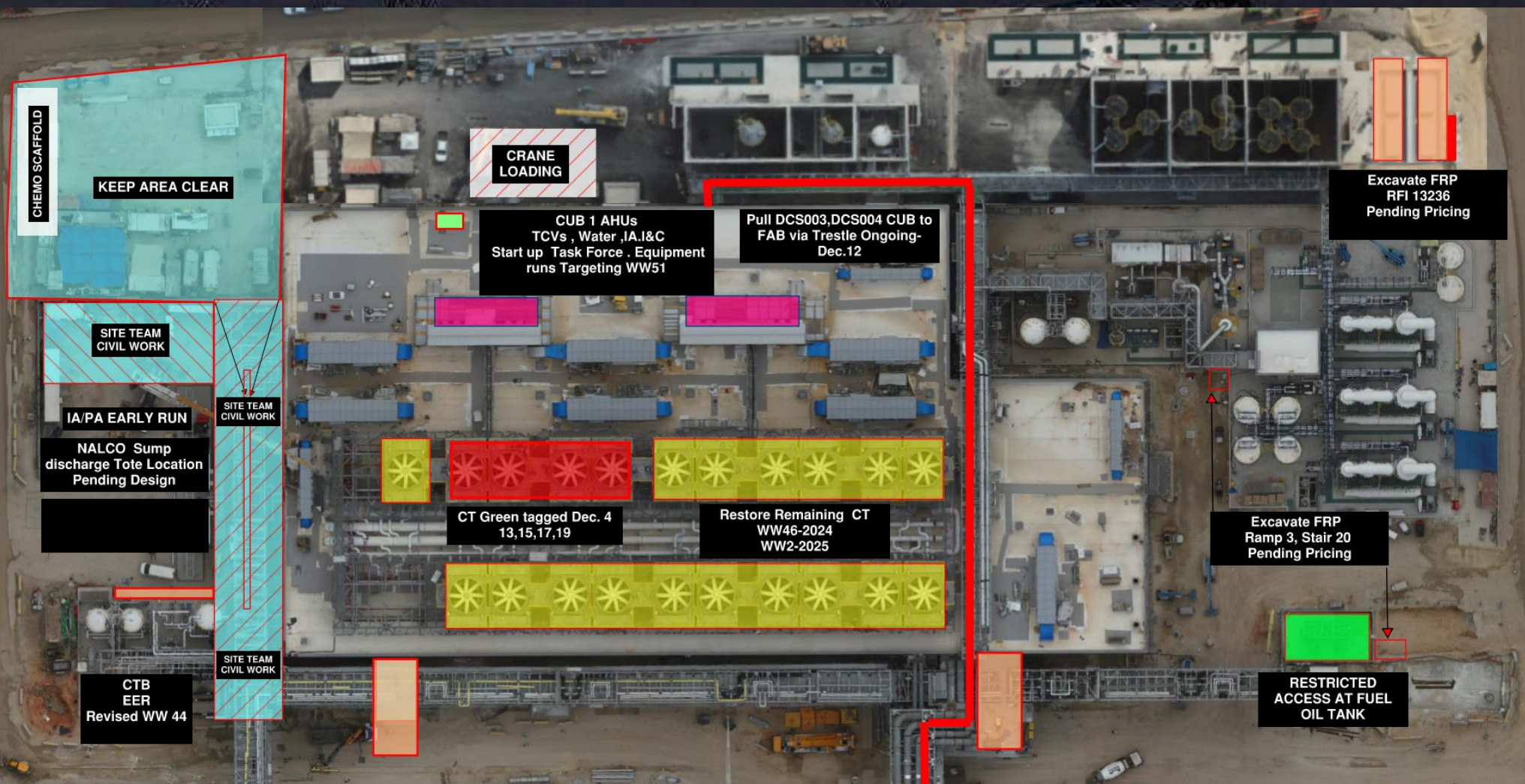


CUB 1

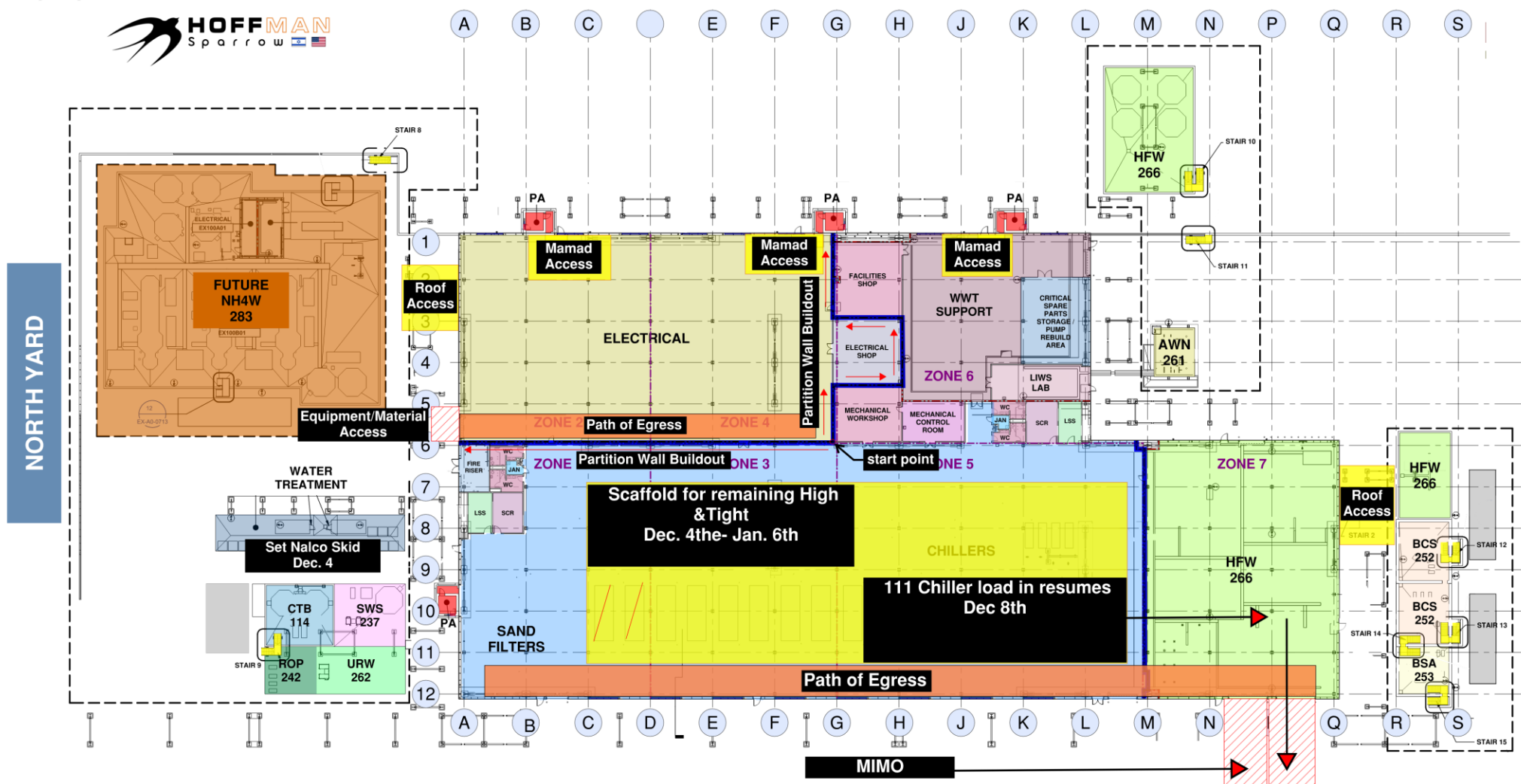
CUB 1 COORDINATION MAP



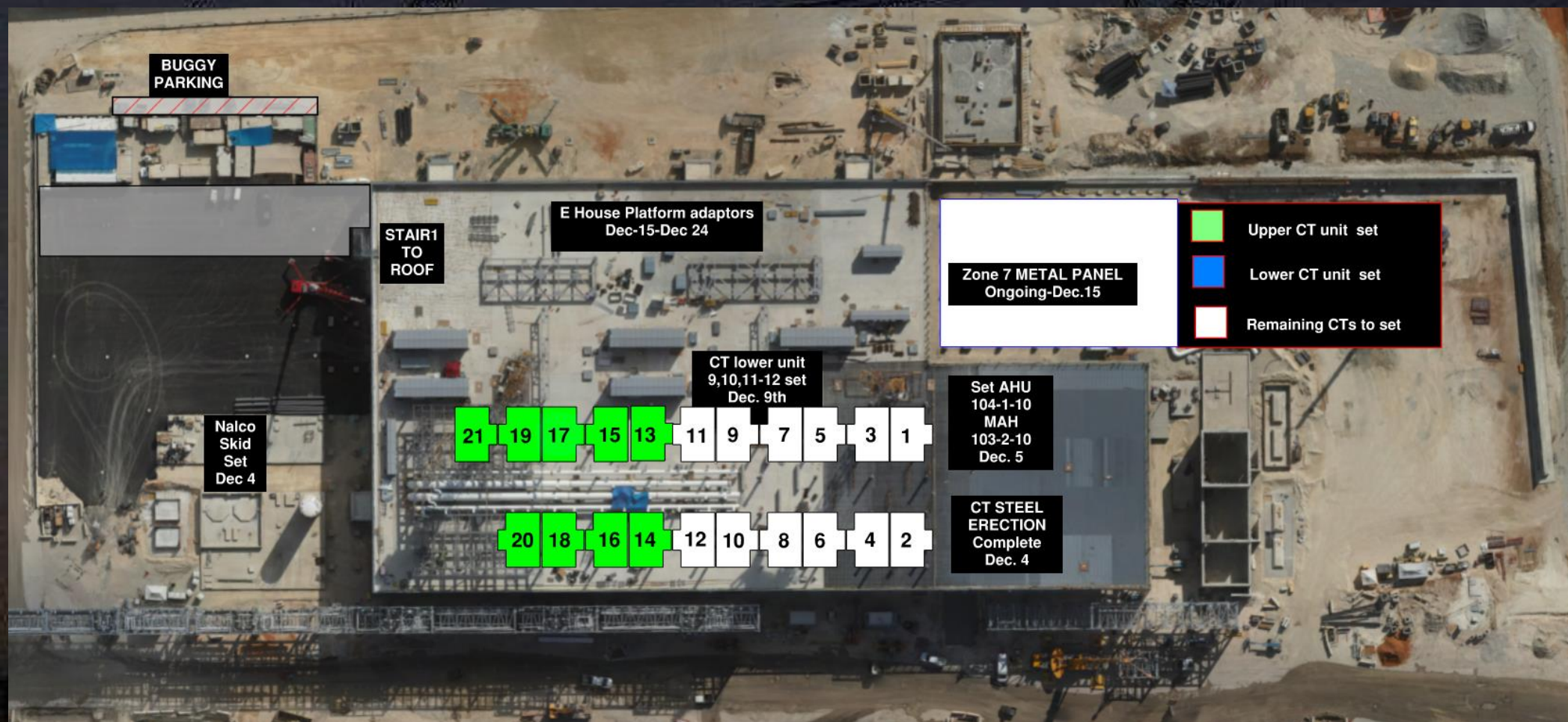
CUB 1 – EXTERIOR/ROOF



CUB 2 COORDINATION MAP

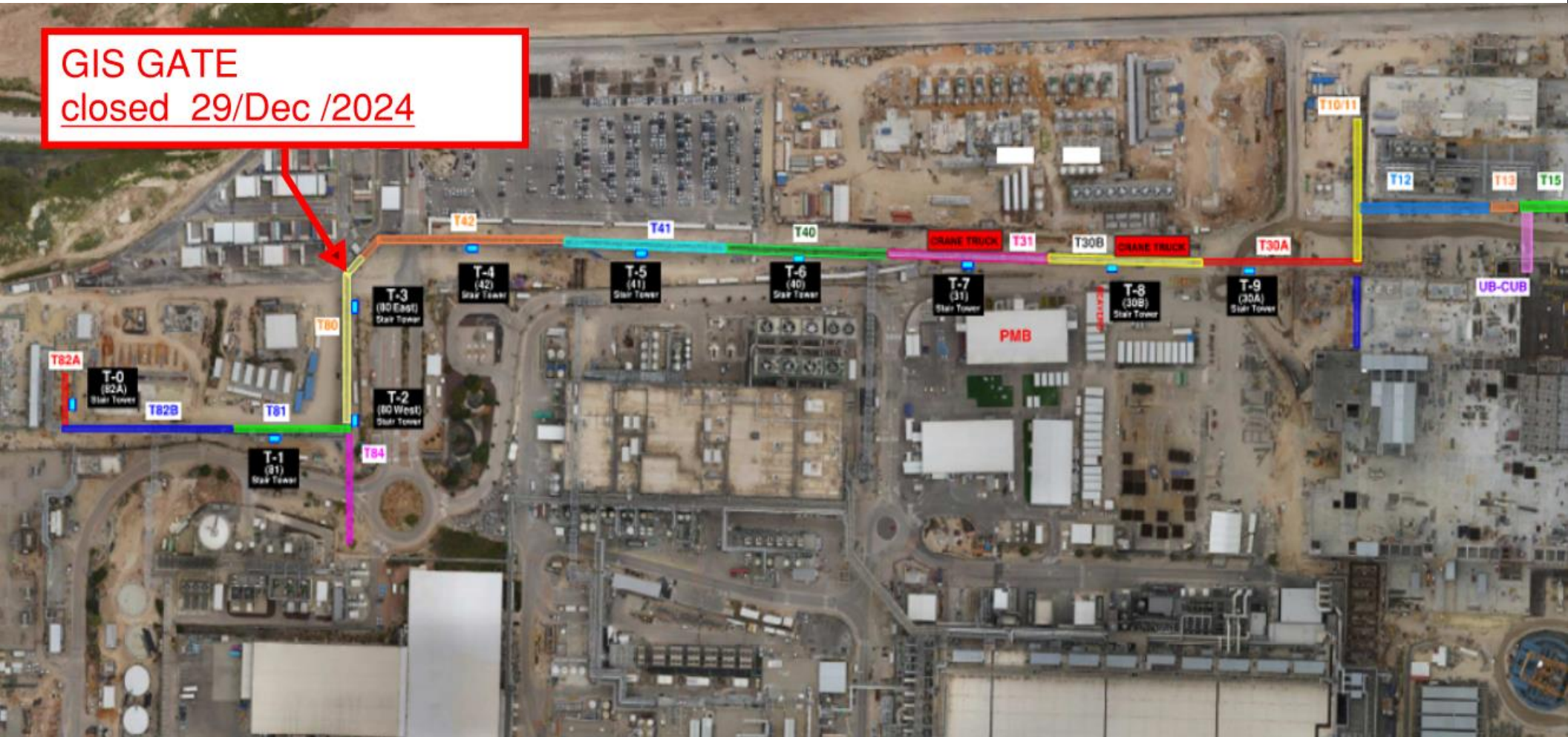


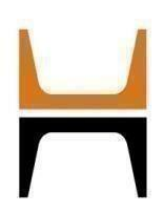
CUB 2 – EXTERIOR/ROOF





GIS GATE
closed 29/Dec /2024





HOFFMAN CONSTRUCTION COMPANY



HOFFMAN
Sparrow



T18

DEC 3th - DEC 11th

DEC 8th

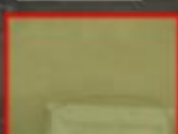
DEC 9th

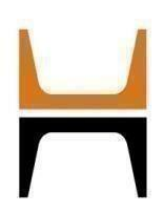
DEC 10th

done

done

done





HOFFMAN CONSTRUCTION COMPANY



HOFFMAN
Sparrow



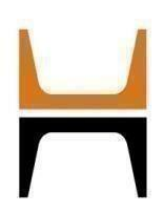
BGC - NDT

Starting –Sunday night December 8^h at 19:00
Finish Monday December 9th at 05:00am.

Safety spotter

Safety spotter





HOFFMAN CONSTRUCTION COMPANY



HOFFMAN
Sparrow  

T20-
BGY

H2 VENT- pressure test 165 psi
09/12- 17:00 - 10/12 05:00

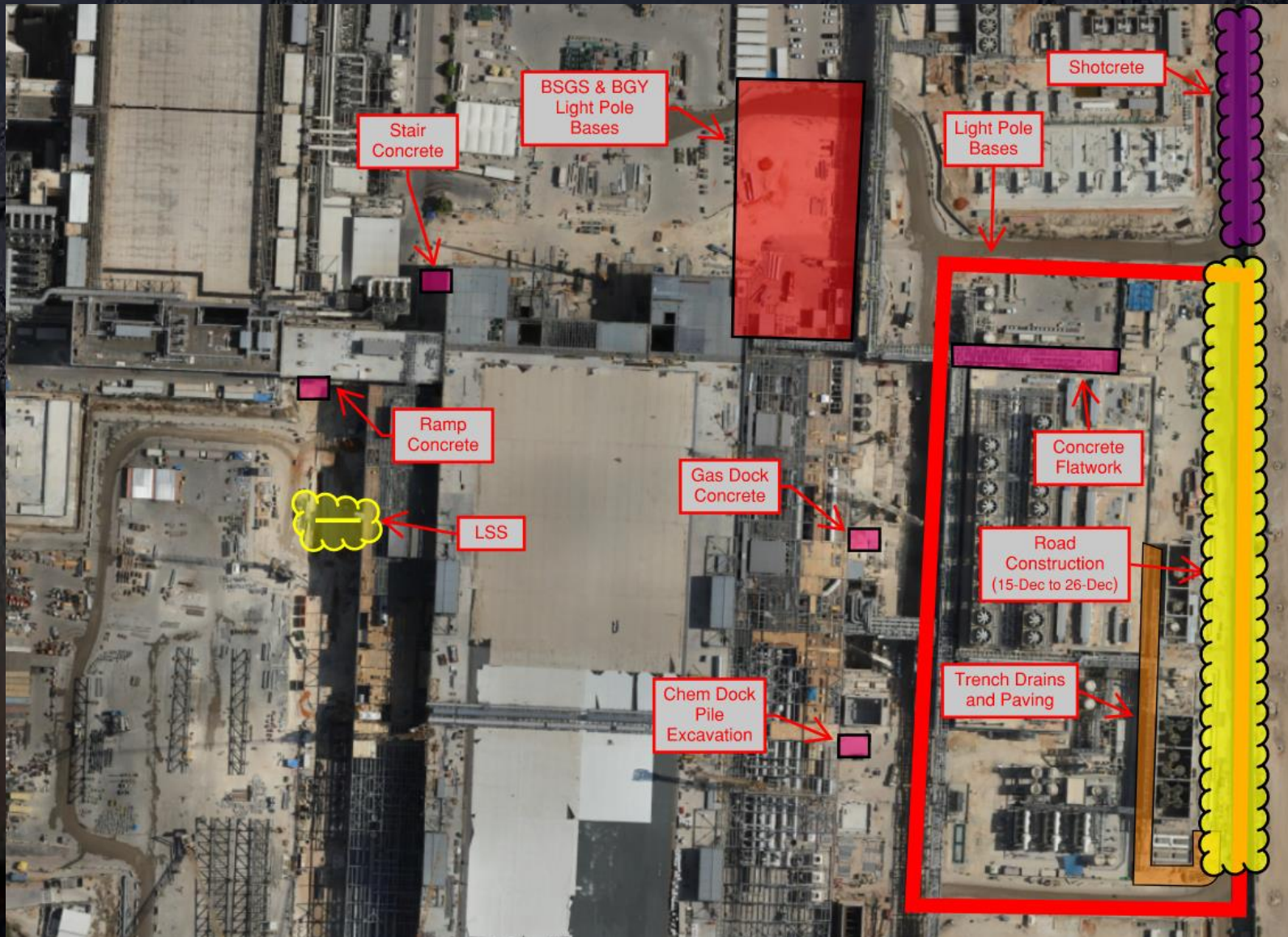
T34



Daily Coordination Meeting

Site Logistics

North





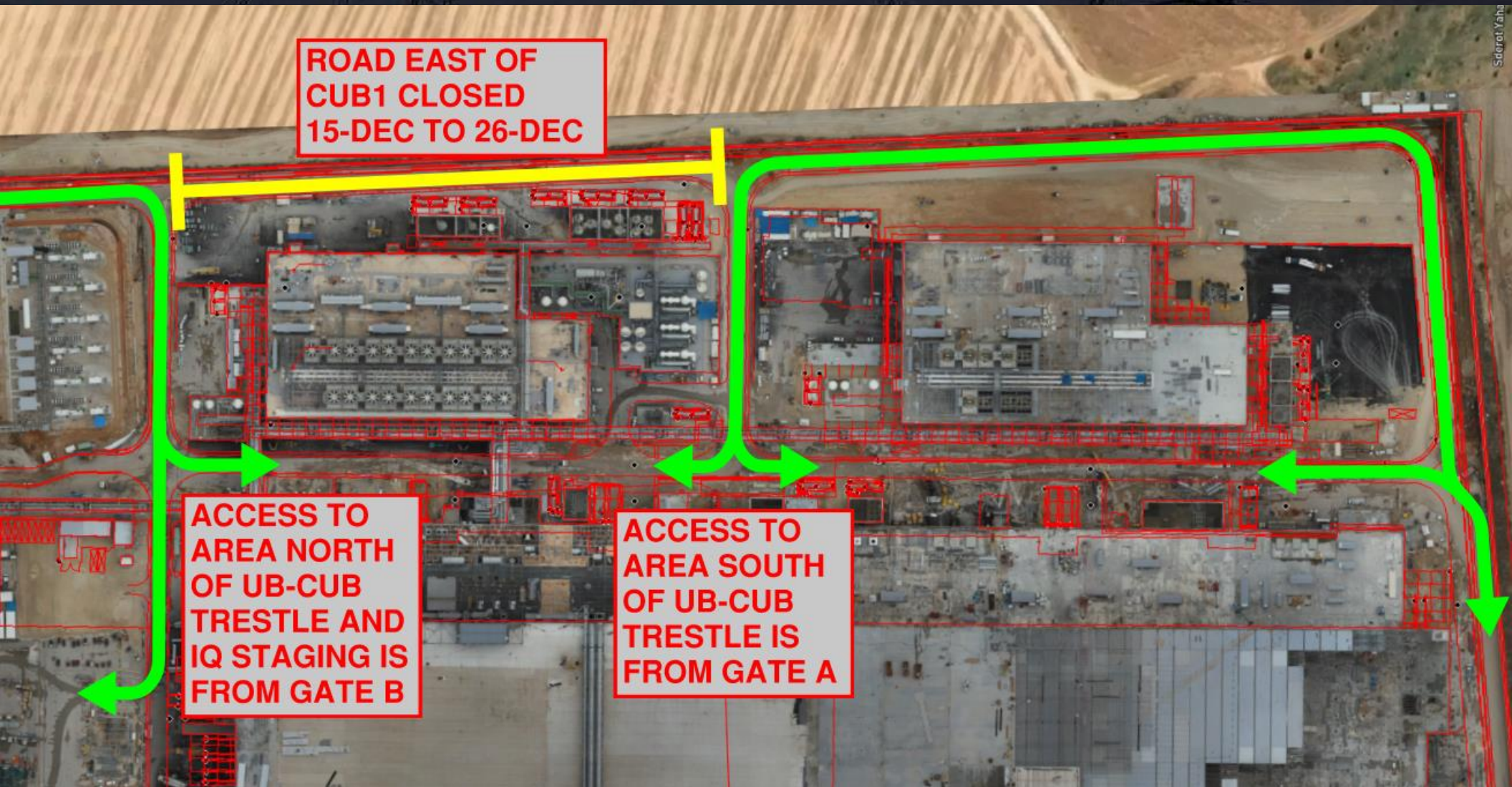
HOFFMAN CONSTRUCTION COMPANY



Daily Coordination Meeting

Site Logistics

East CUB1 Road Closure





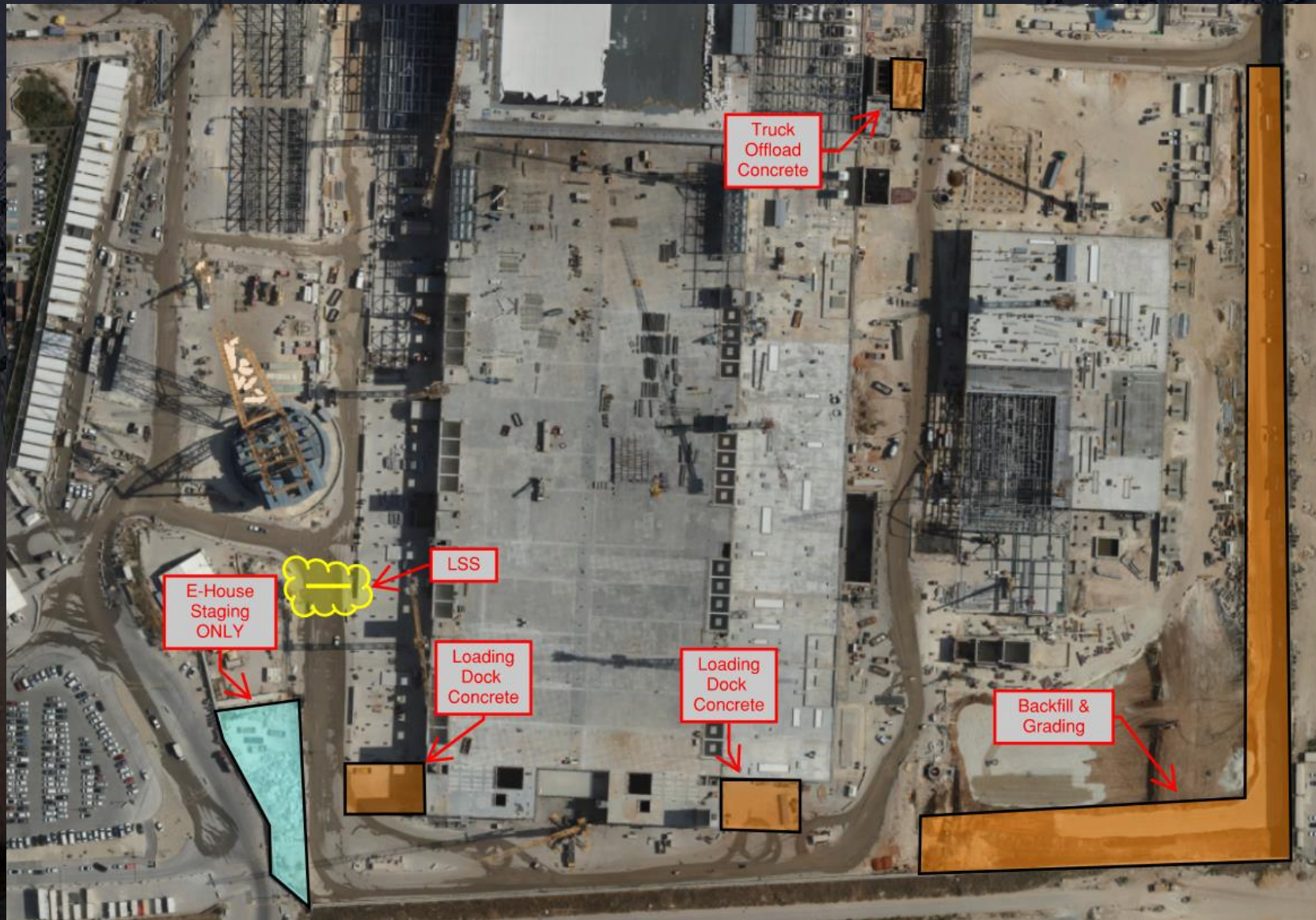
HOFFMAN CONSTRUCTION COMPANY



Daily Coordination Meeting

Site Logistics

South



Plans in the Field

- Unfortunately we are again having to remind everyone that crews are required to have access to the plans that you expect them to follow.
- This requirement has been stated several times, but a reminder–
- If your crew is performing any work, they must have a plan physically accessible to them in the field.
- If their work requires additional plans such as: hoisting activities, work from heights, confined space, pressure testing, LOTO, etc. they must have access to those plans too.
- If crews are found performing work without the appropriate plans they will be shut down until the plans are made accessible to them in the field.
- This is not a new requirement.

Daily Coordination Meeting



14:00 Sign In