

# Daily Coordination Meeting



# Daily Coordination Meeting

## General Topics:

- **30% 1<sup>st</sup> Tool Prefac Start L1 Milestone Claimed!!**





## UTILITY LEVEL PRESS TEST

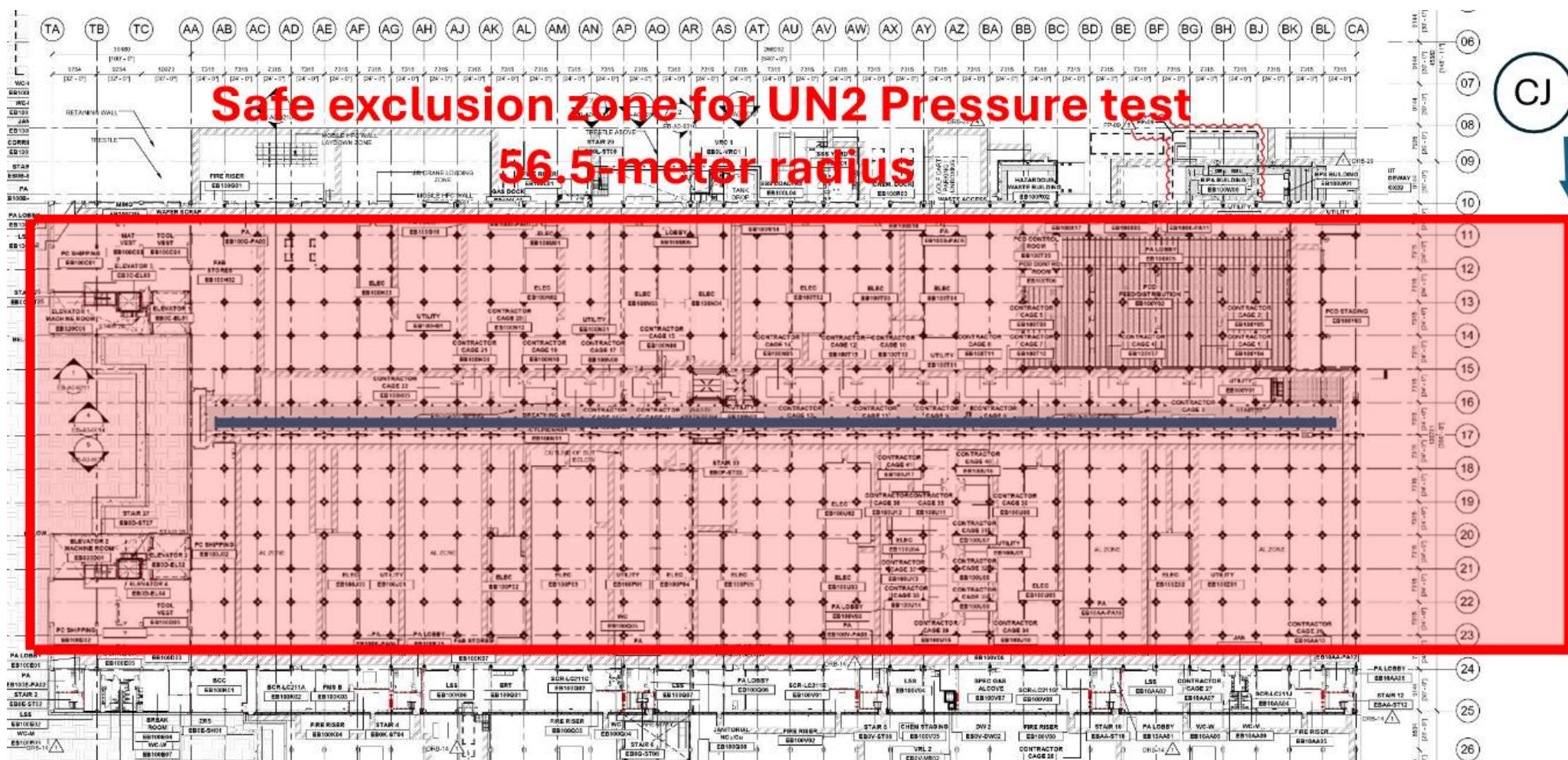
LESICO

## Press test UN2

3/25

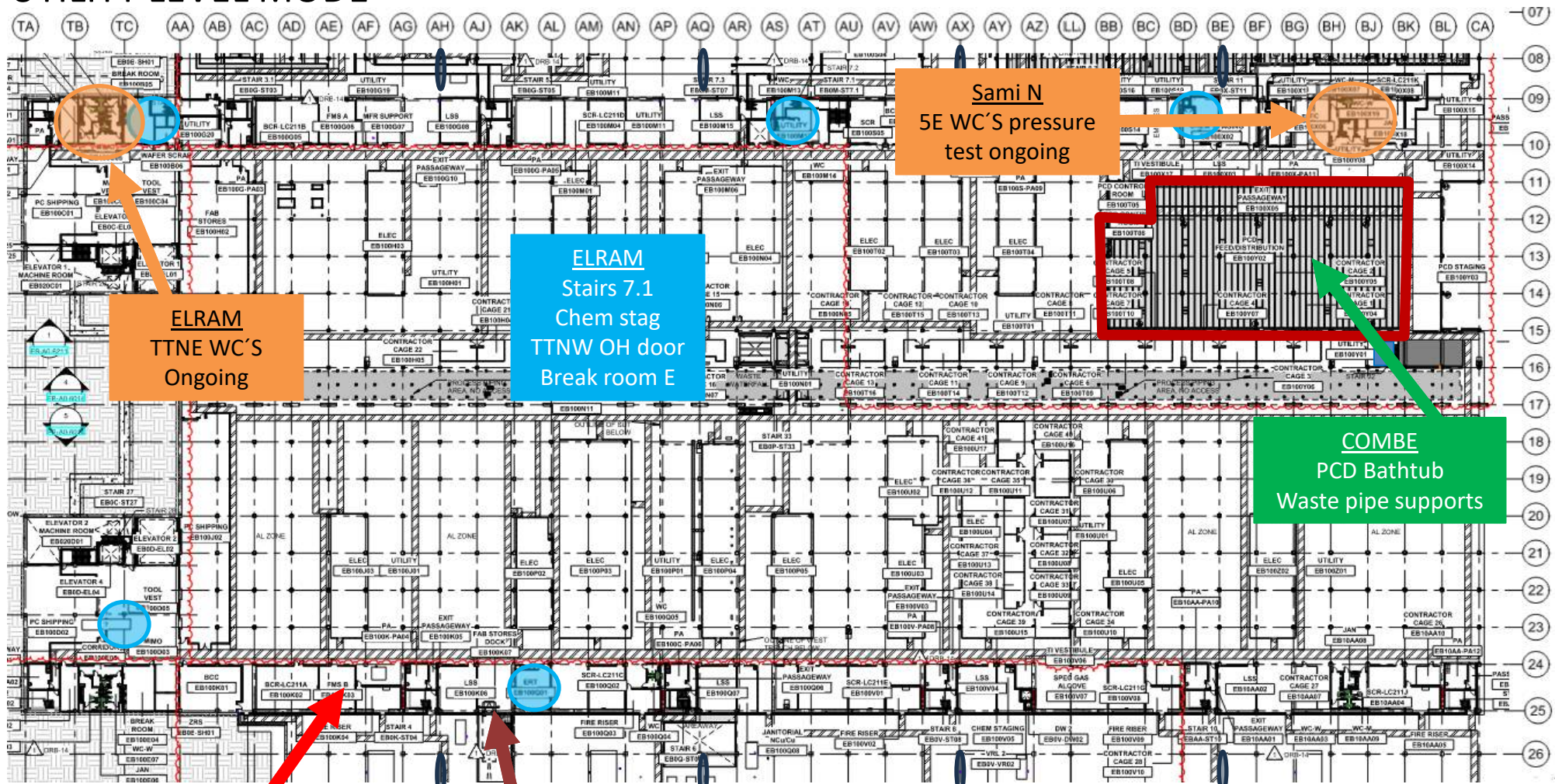
From 19:00

till 5:00





# UTILITY LEVEL MOD1



Sami N  
5E WC'S pressure  
test ongoing

ELRAM  
TTNE WC'S  
Ongoing

ELRAM  
Stairs 7.1  
Chem stag  
TTNW OH door  
Break room E

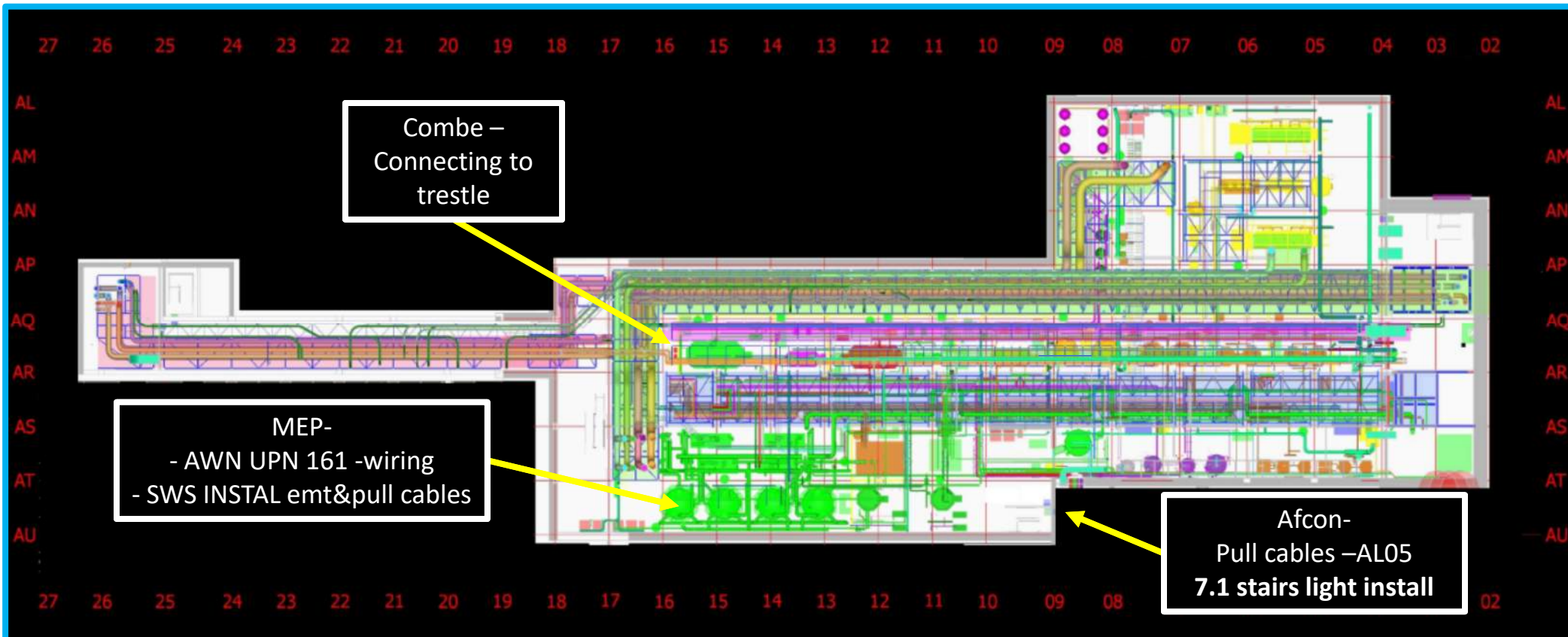
COMBE  
PCD Bathtub  
Waste pipe supports

Carmel Duct  
Duct install back  
3/23

SHEARIM  
Need start  
date !?

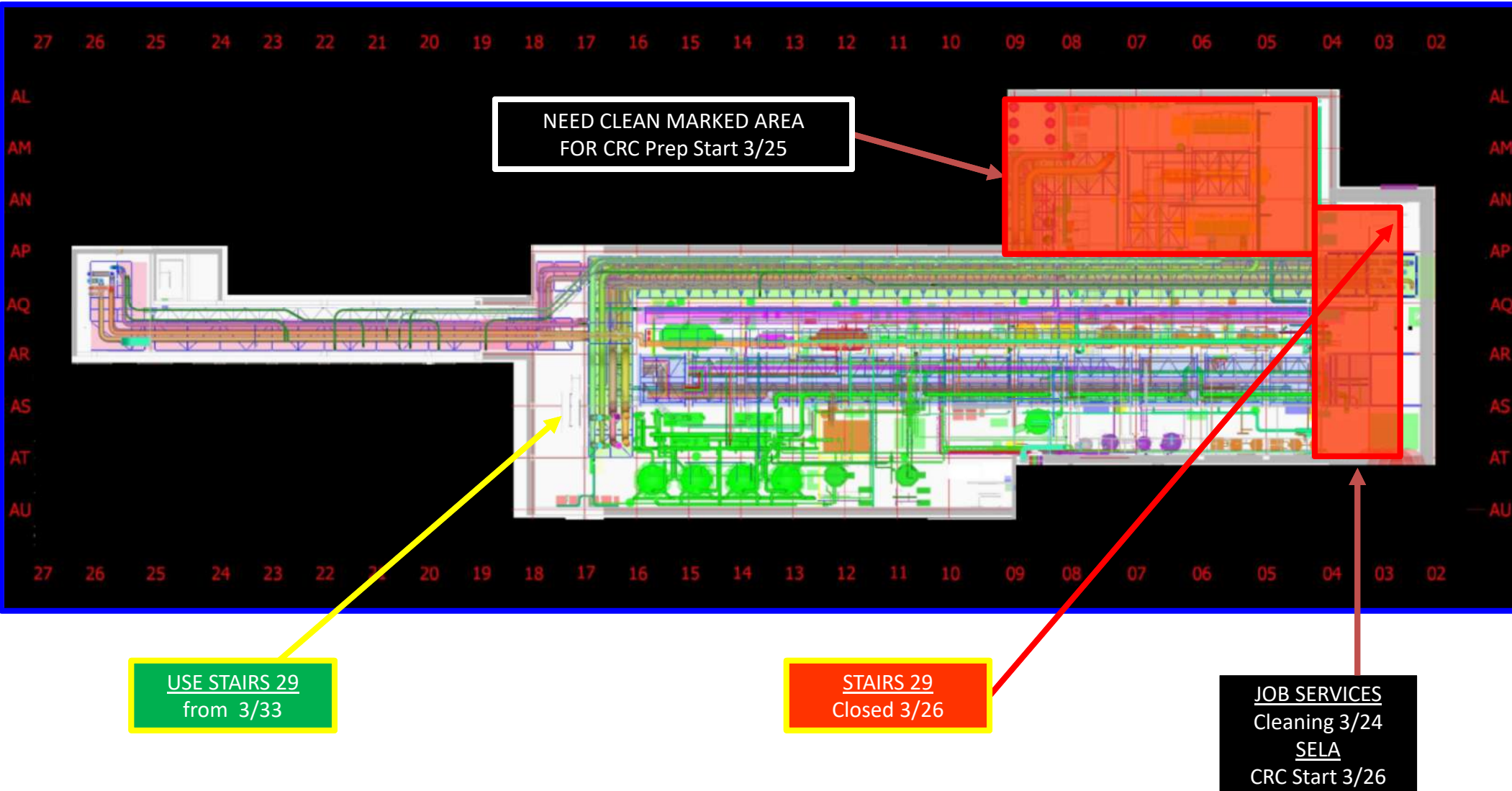


## SUT 38.1 LEVEL

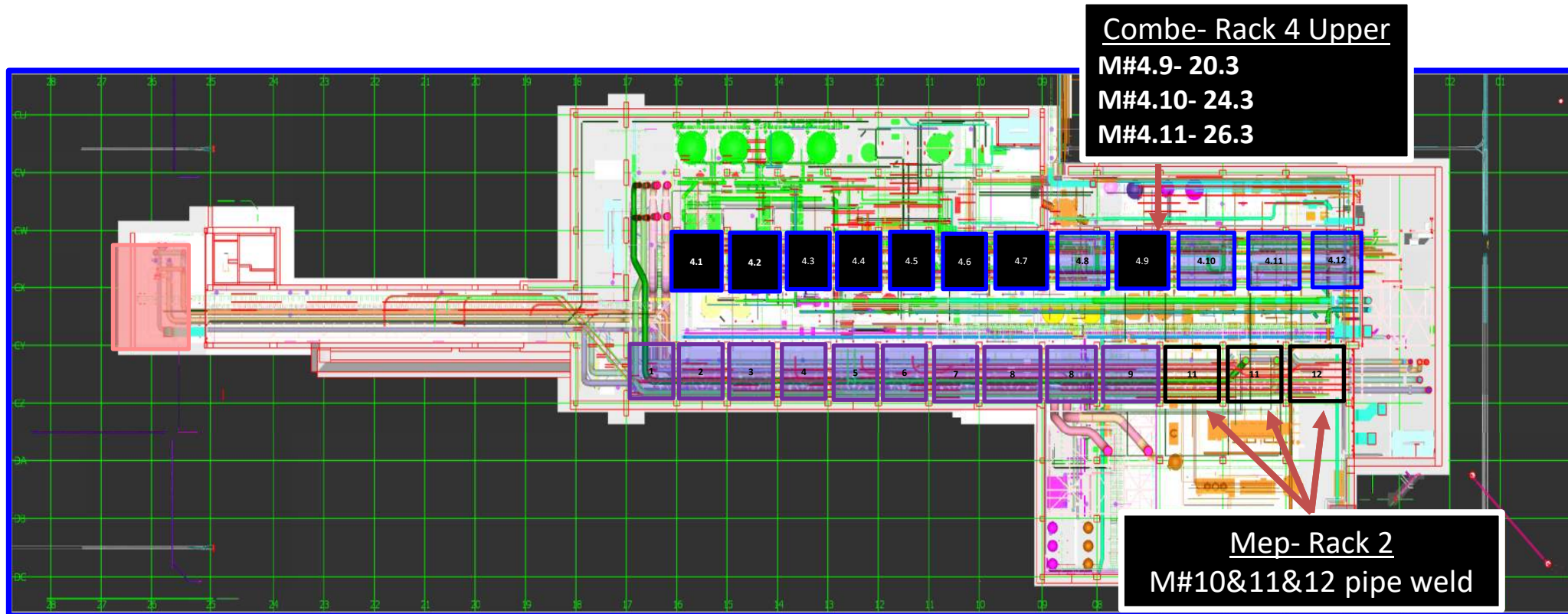




## SUT 38.1 LEVEL



## SUT 38.2 LEVEL



## Slide 7

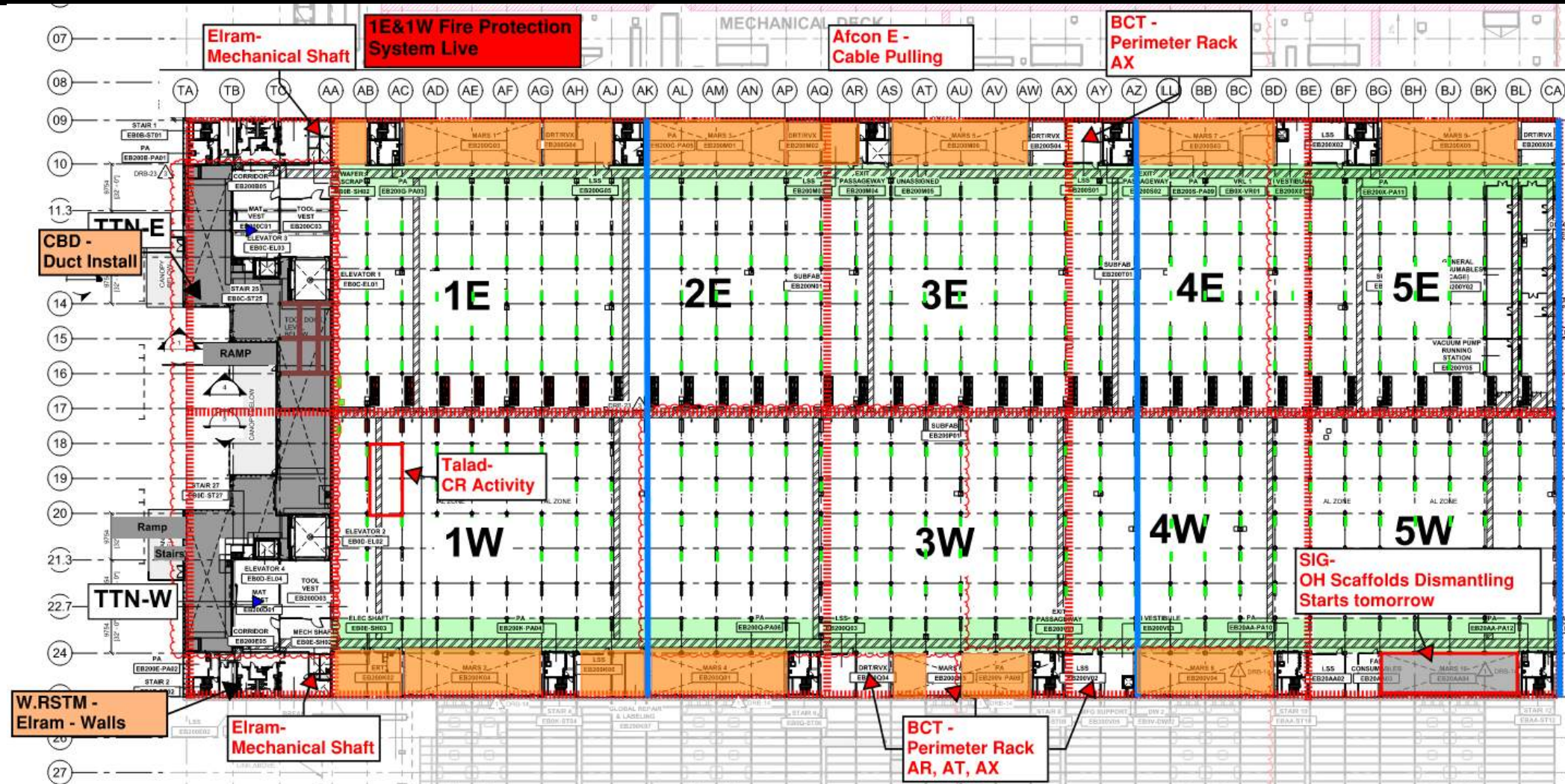
---

**IK5**

Ibrahim Krinawi, 3/5/2025

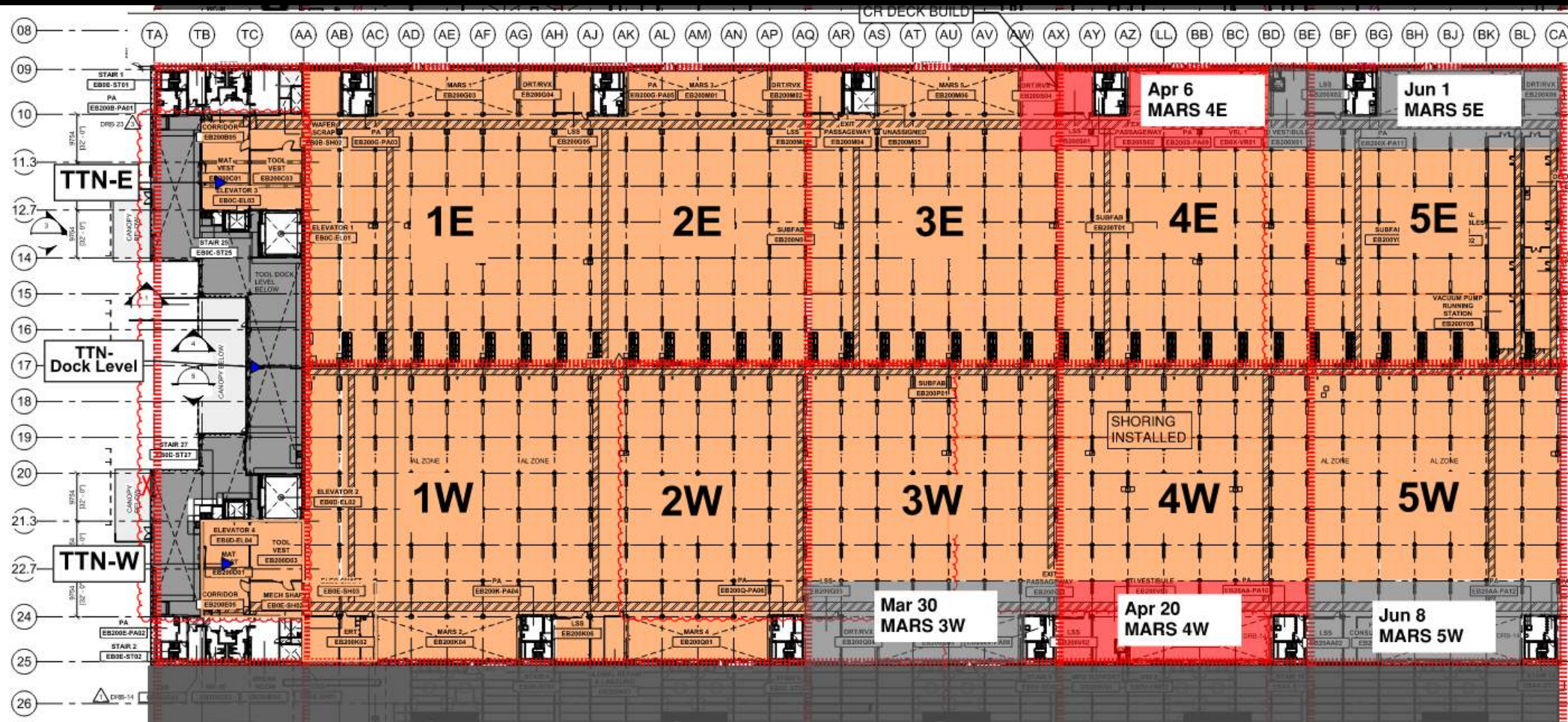


# SUBFAB BUILDOUT MOD 1



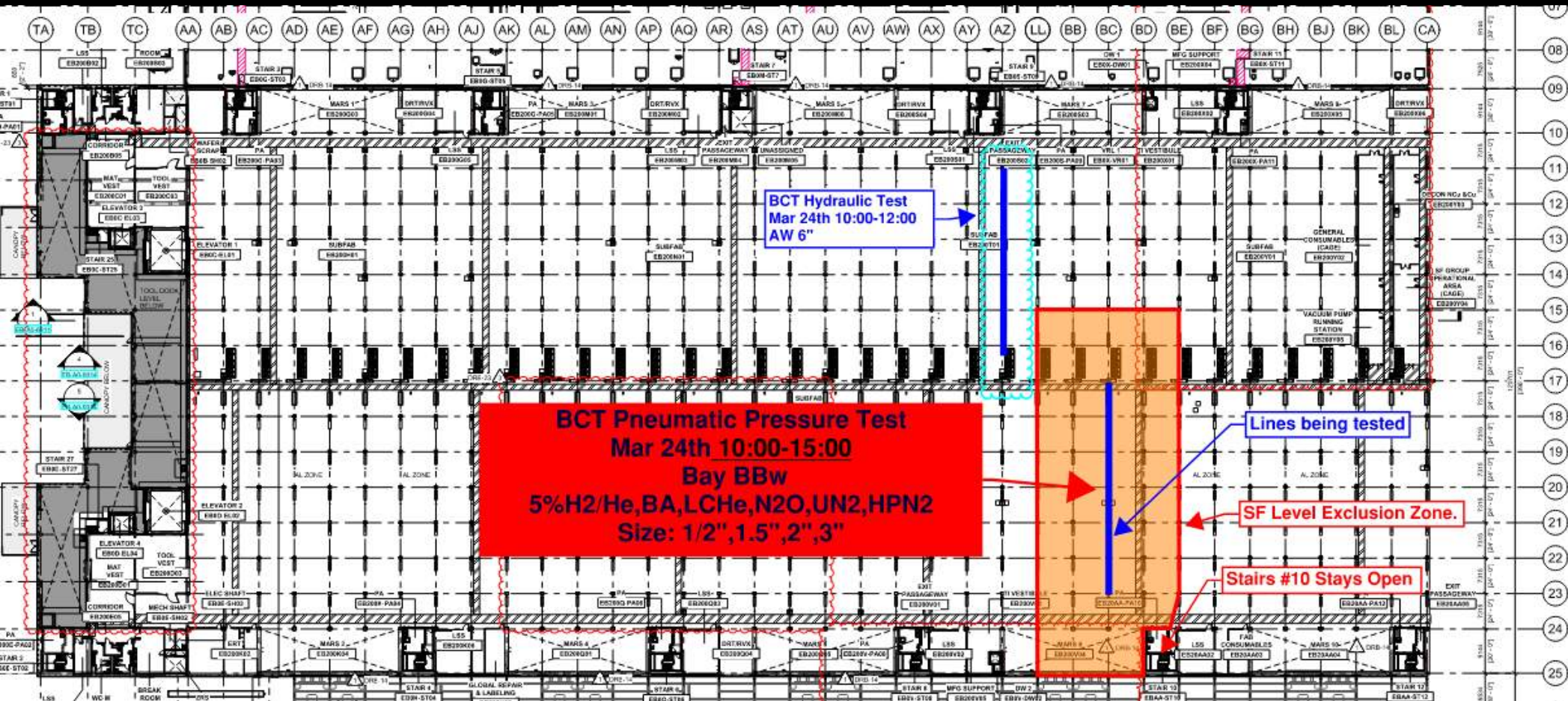


# SUBFAB CRC TOPCOAT





# BCT Pressure Test Today





Lesico UN2 Pressure Test  
Mar 25th 19:00-5:00

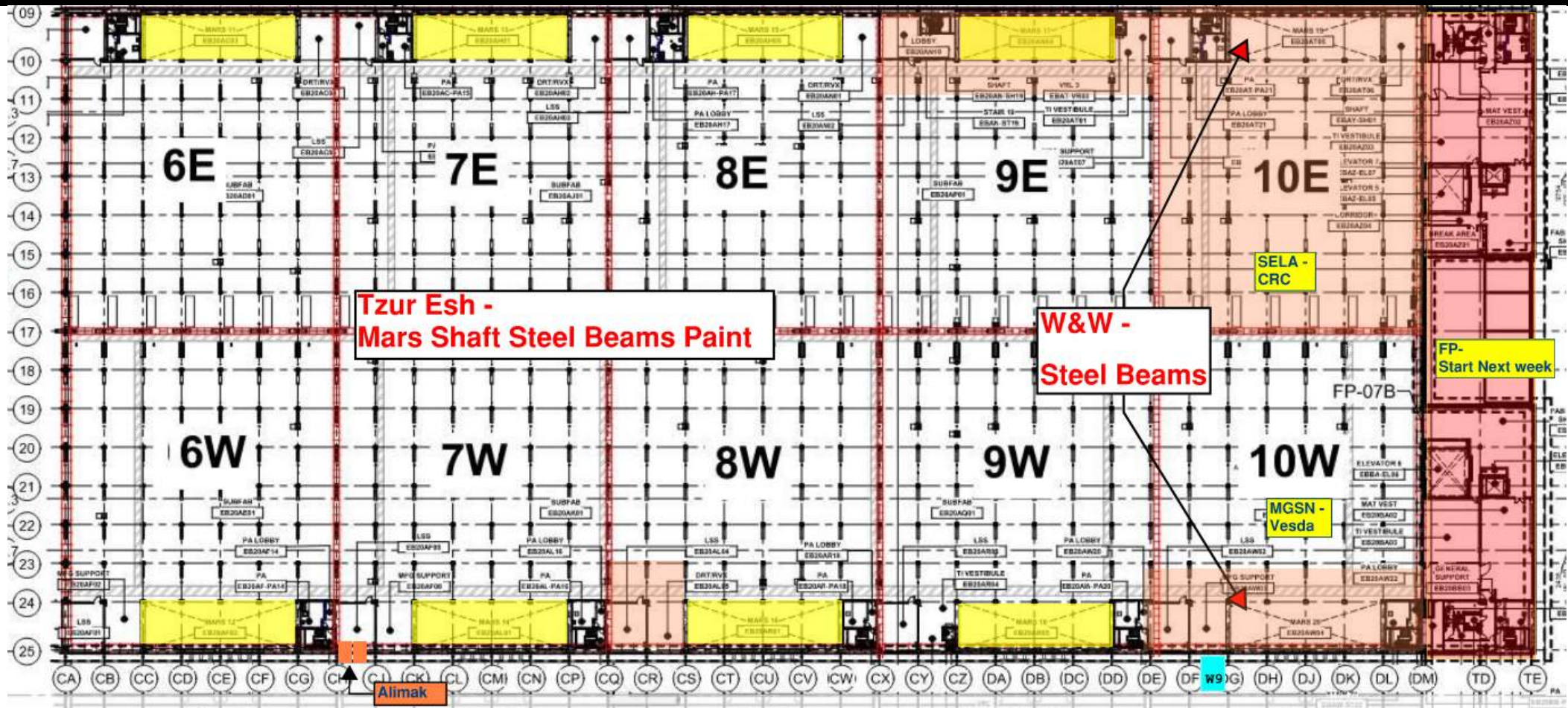
SF Level Exclusion Zone.

CB

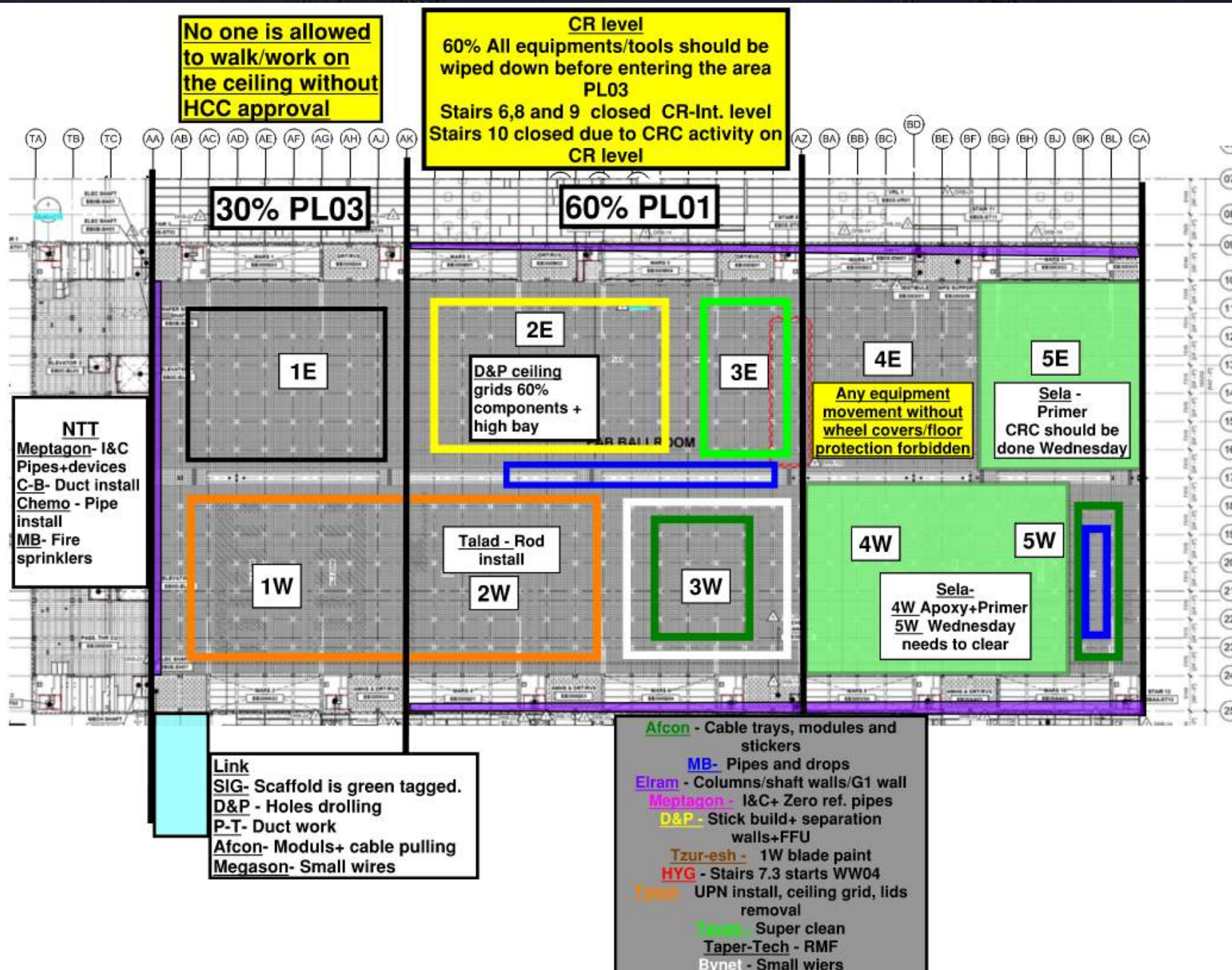
**SF Level Exclusion Zone.**



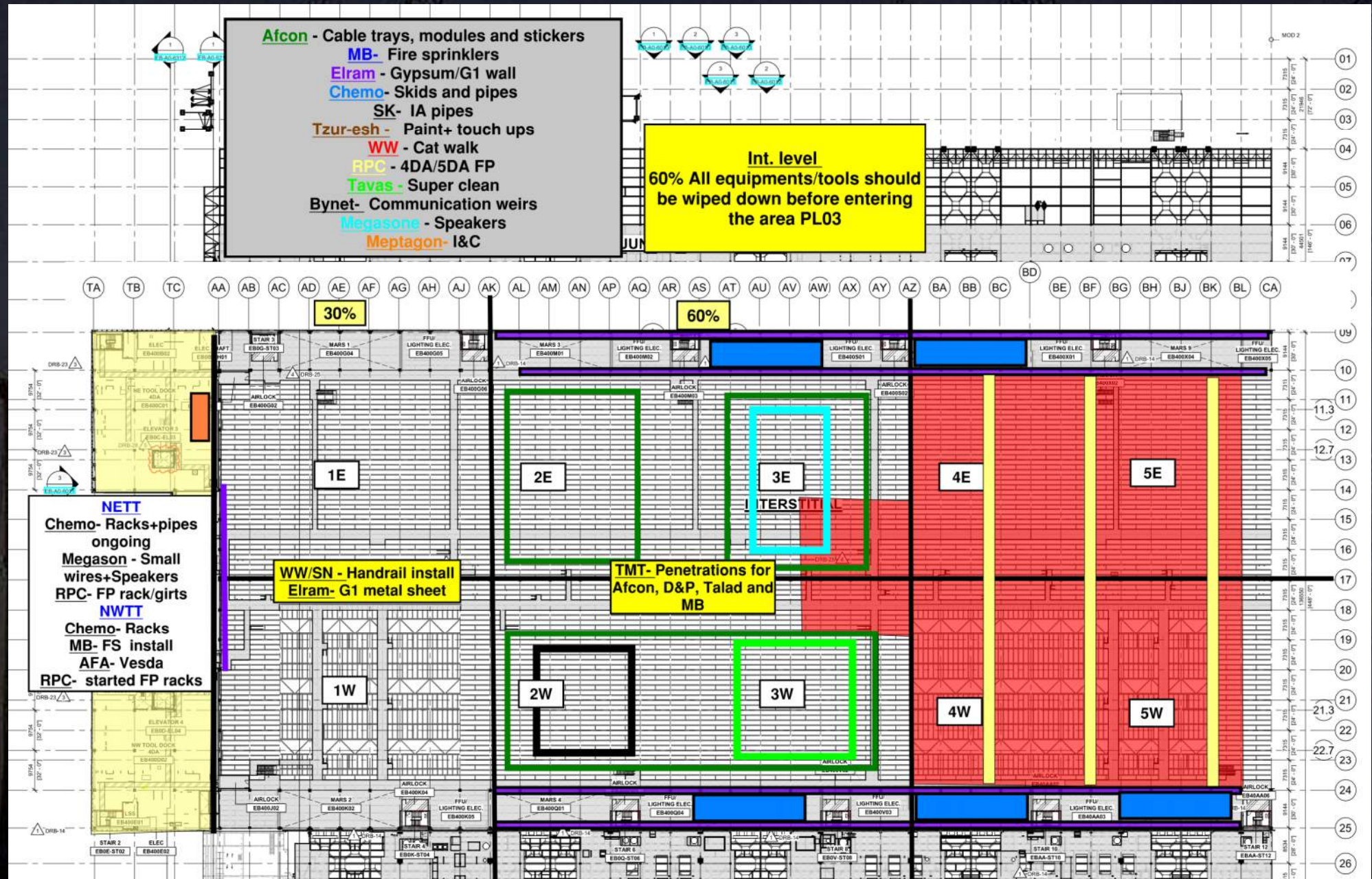
# SUBFAB BUILDOUT MOD 2



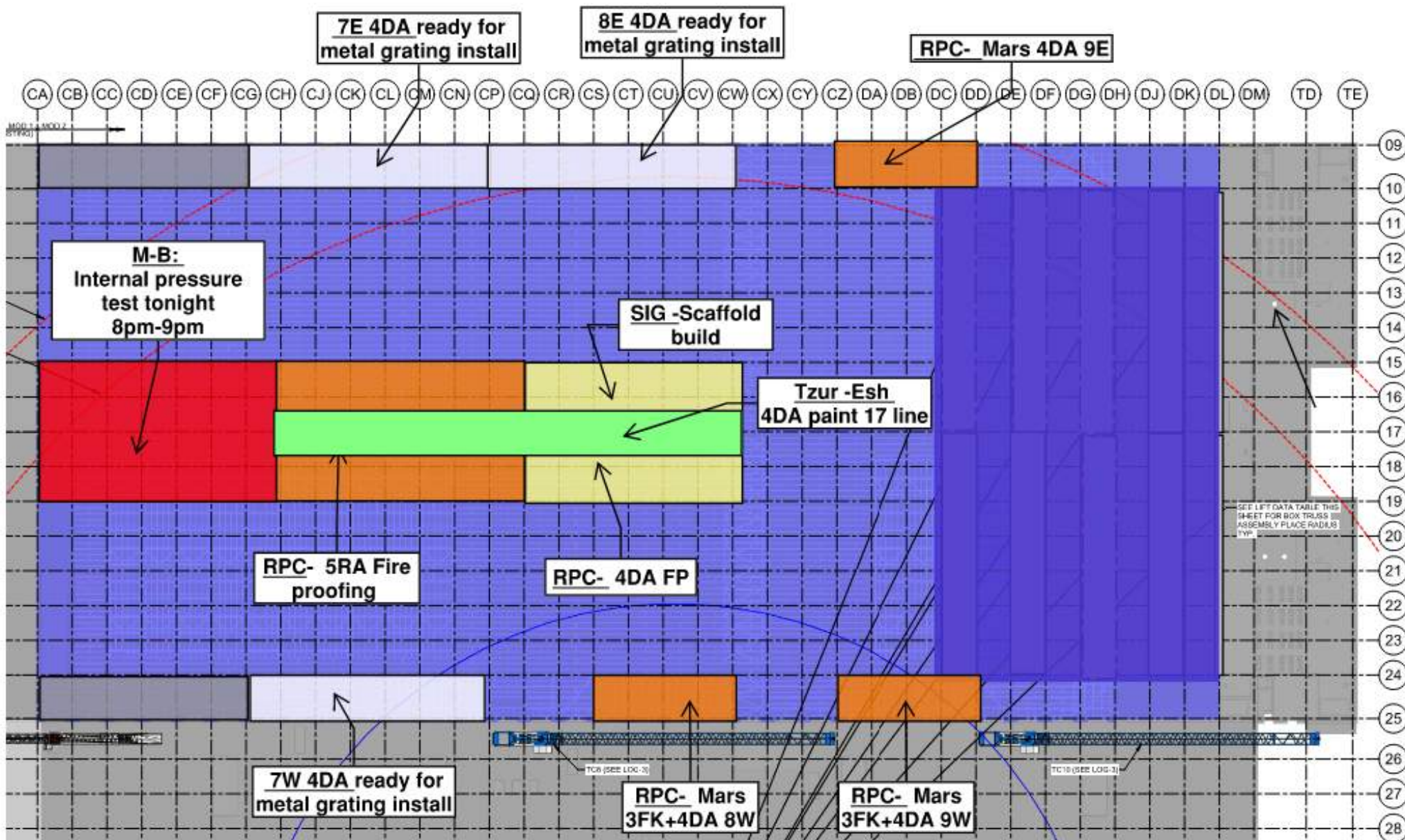




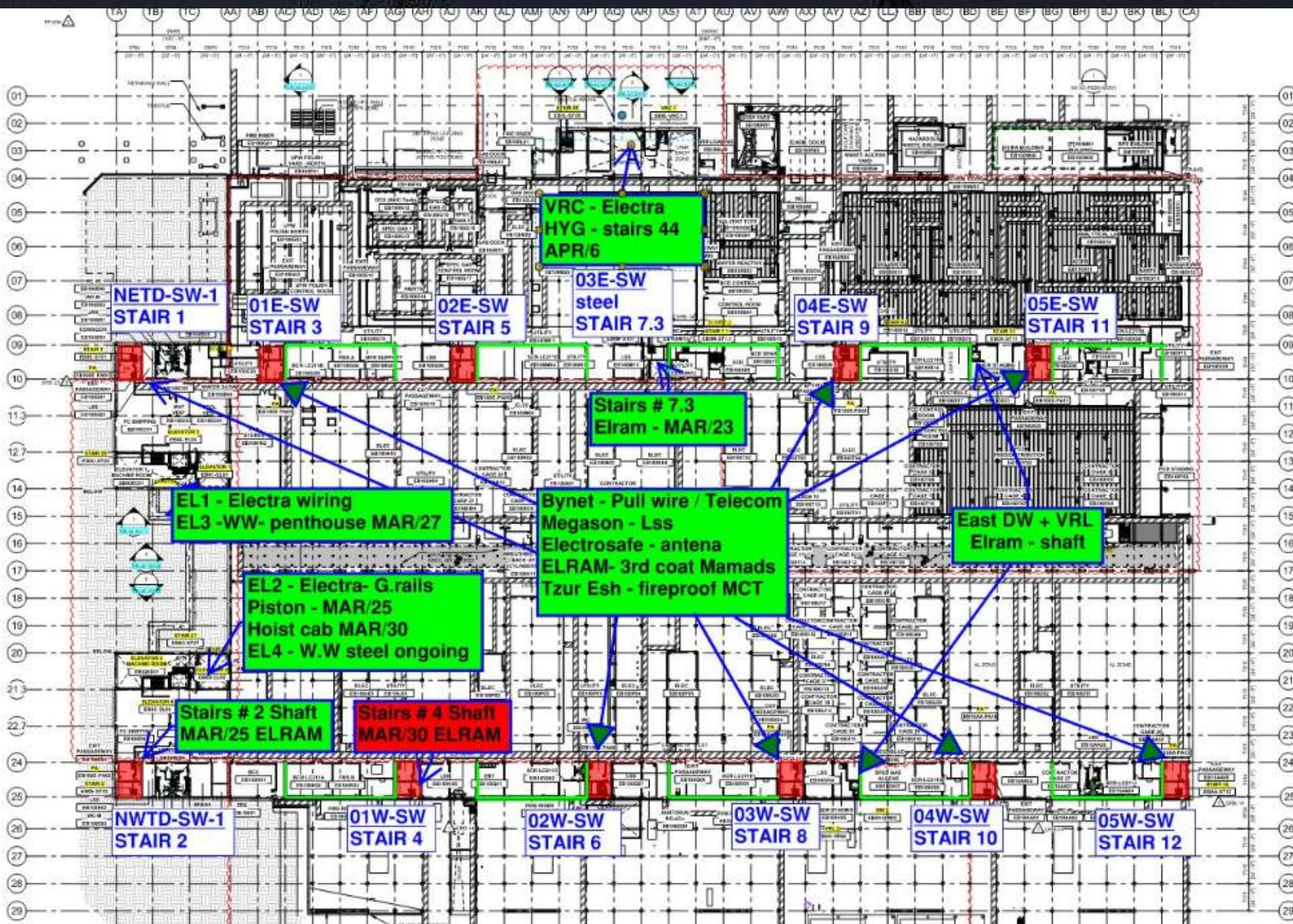






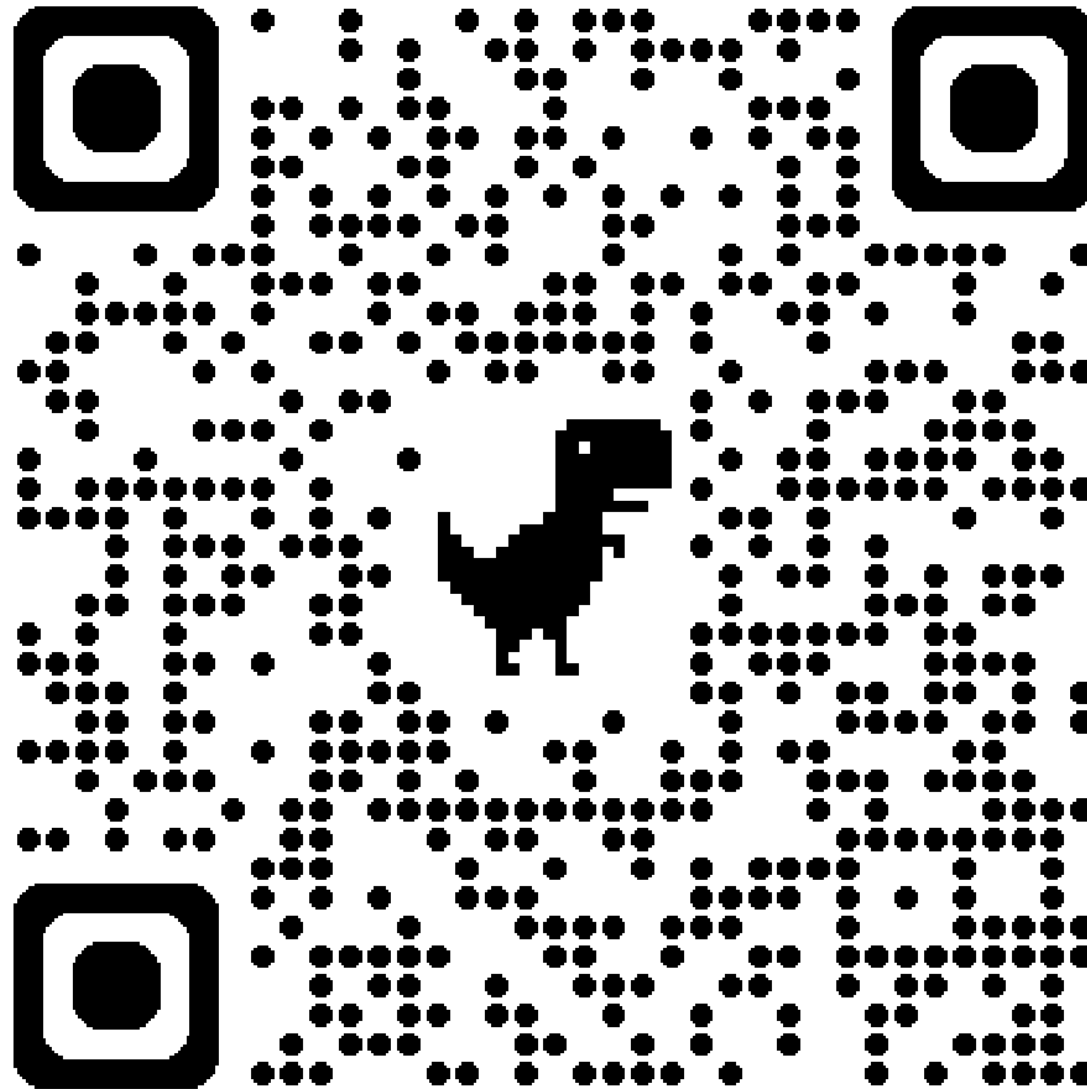






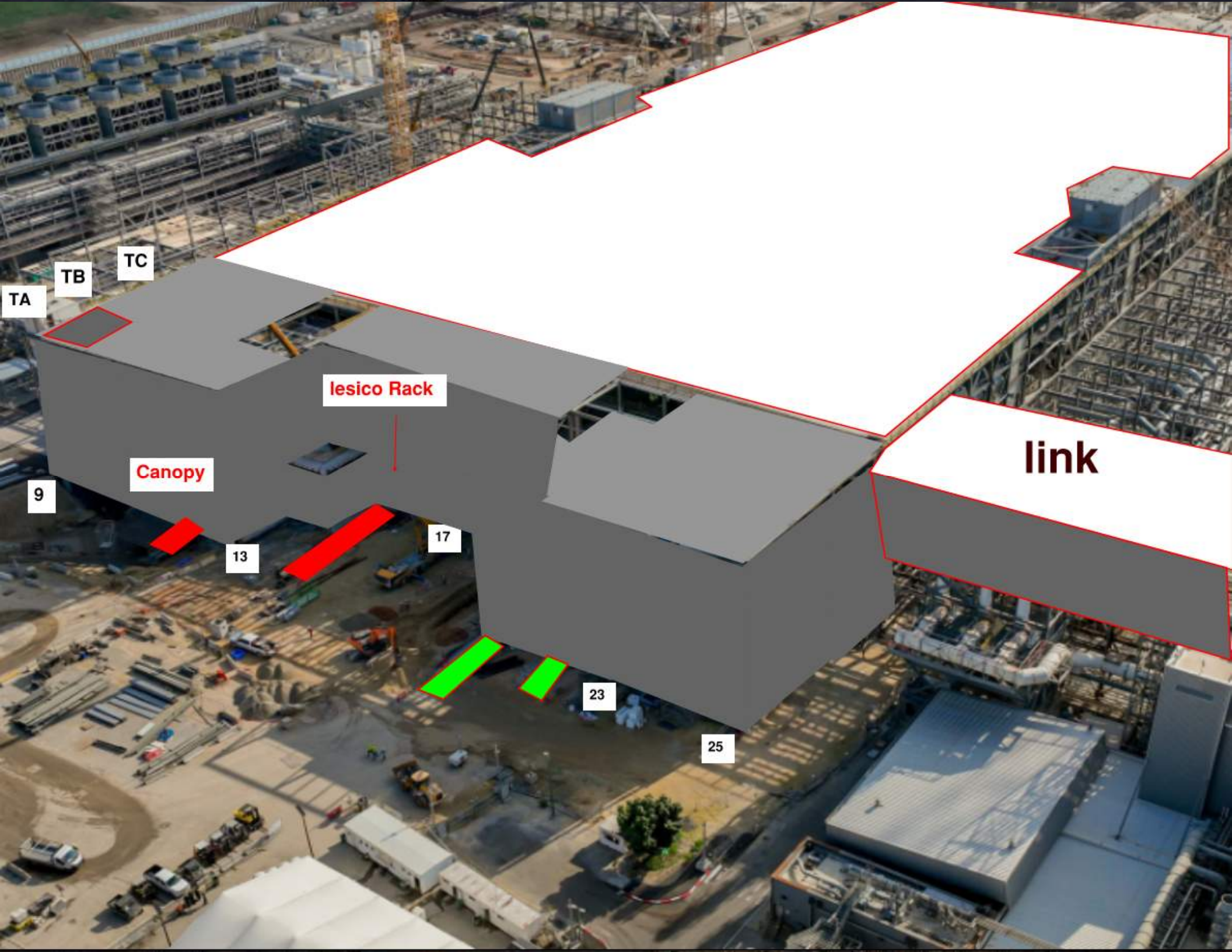


# Siding Penetration Request Form



Subcontractor must fill out and submit all required cells in order to get a penetration cut through the siding.





TA

TB

TC

Iesico Rack

Canopy

9

13

17

23

25

link







## MOD 2 EASTSIDE GIRTS/SIDING



2752/ 2751	2742/ 2741	2732/ 2731	2722/ 2721	2712/ 2711	2552/ 2551	2542/ 2541	2532/ 2531	2522/ 2521	2512/ 2511	2502/ 2501
---------------	---------------	---------------	---------------	---------------	---------------	---------------	---------------	---------------	---------------	---------------

READY FOR GIRTS	
INSTALLING GIRTS	
READY FOR PANELS	
PANELS INSTALLED	

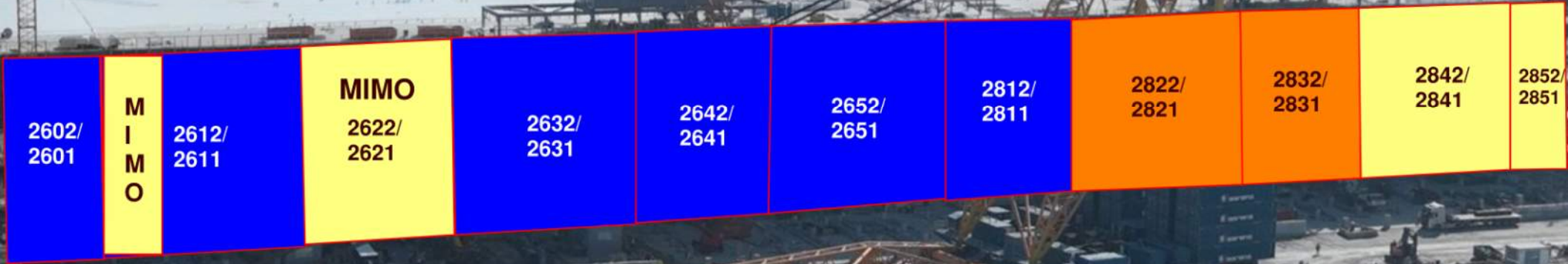
MOD 2 WESTSIDE GIRTS/SIDING

READY FOR GIRTS

INSTALLING GIRTS

READY FOR PANELS

PANELS INSTALLED

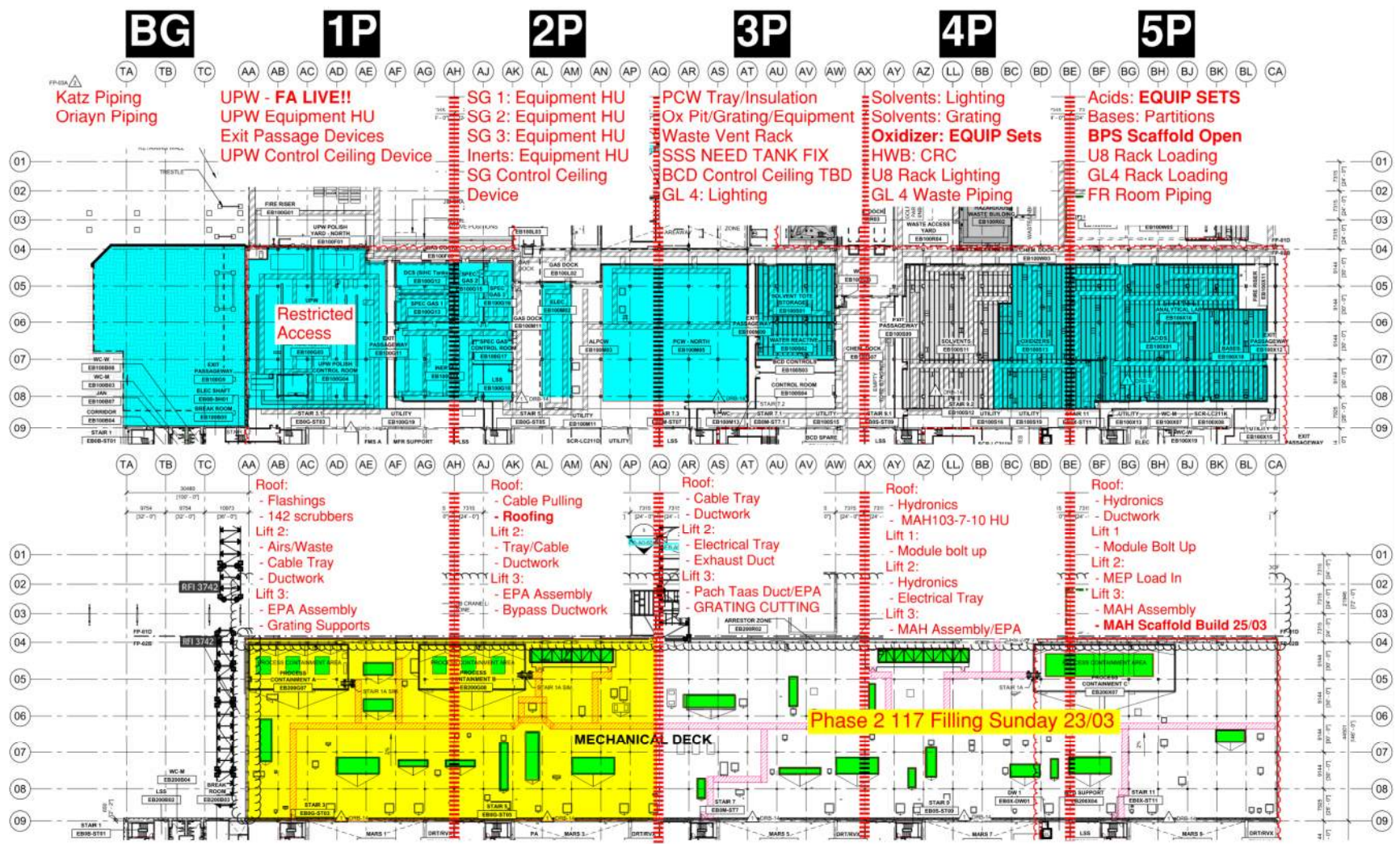




# PSSS.1

Utility Level  
1YA

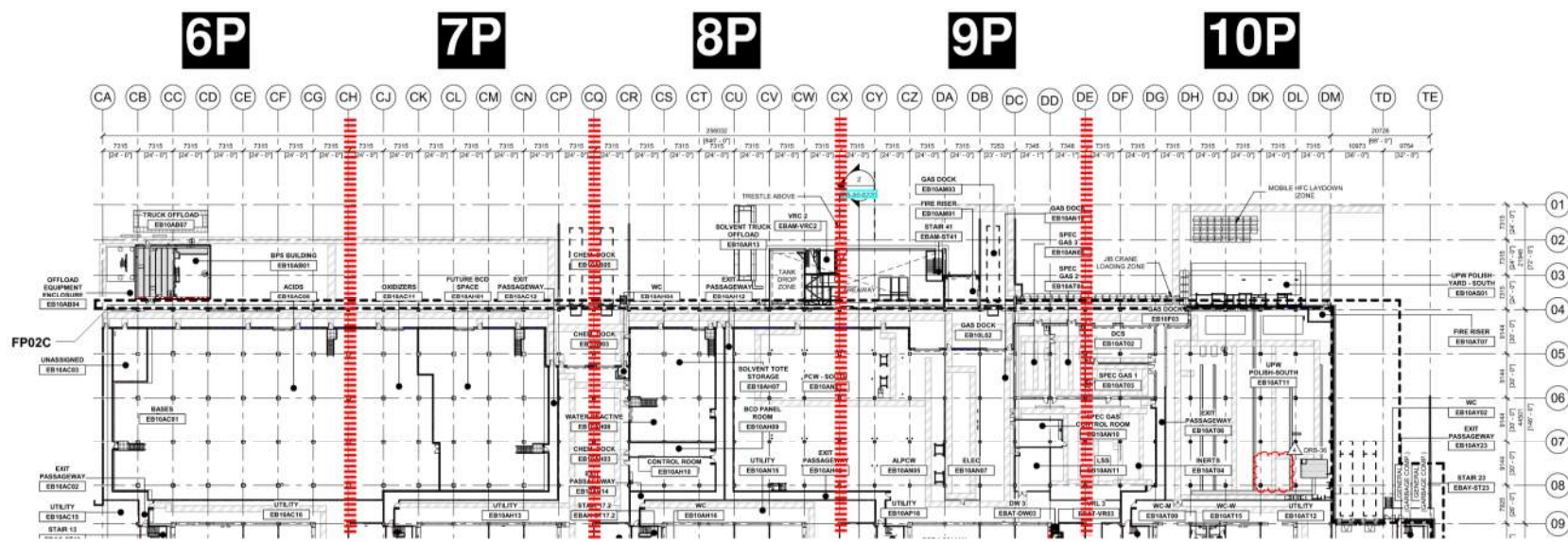
PSSS Roof  
2SA



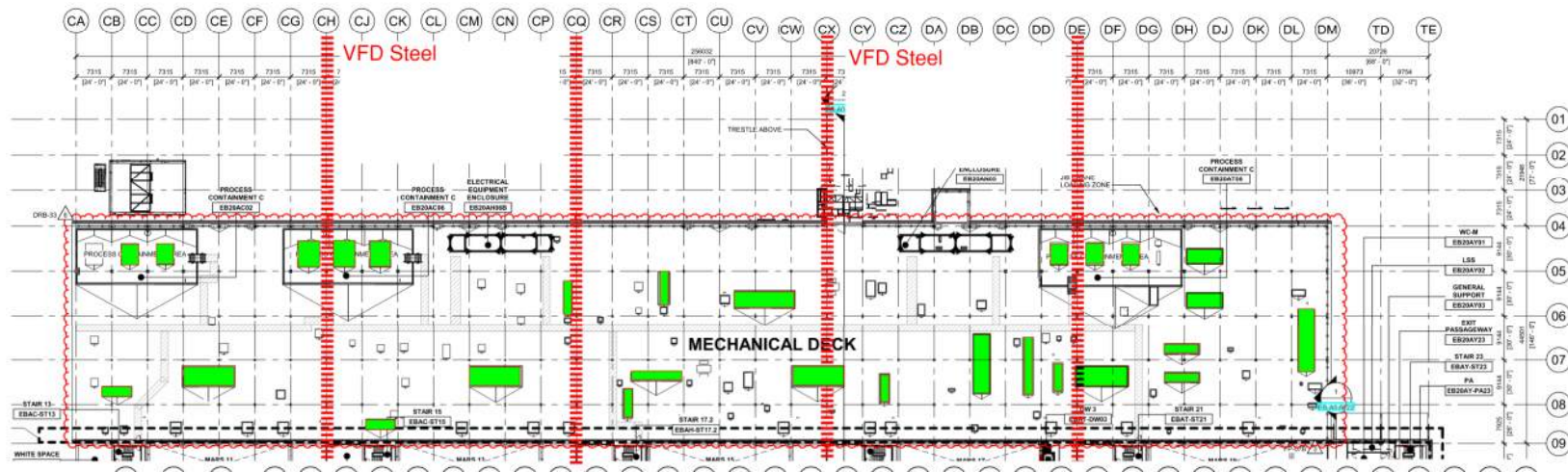


# PSSS.2

Utility Level  
1YA

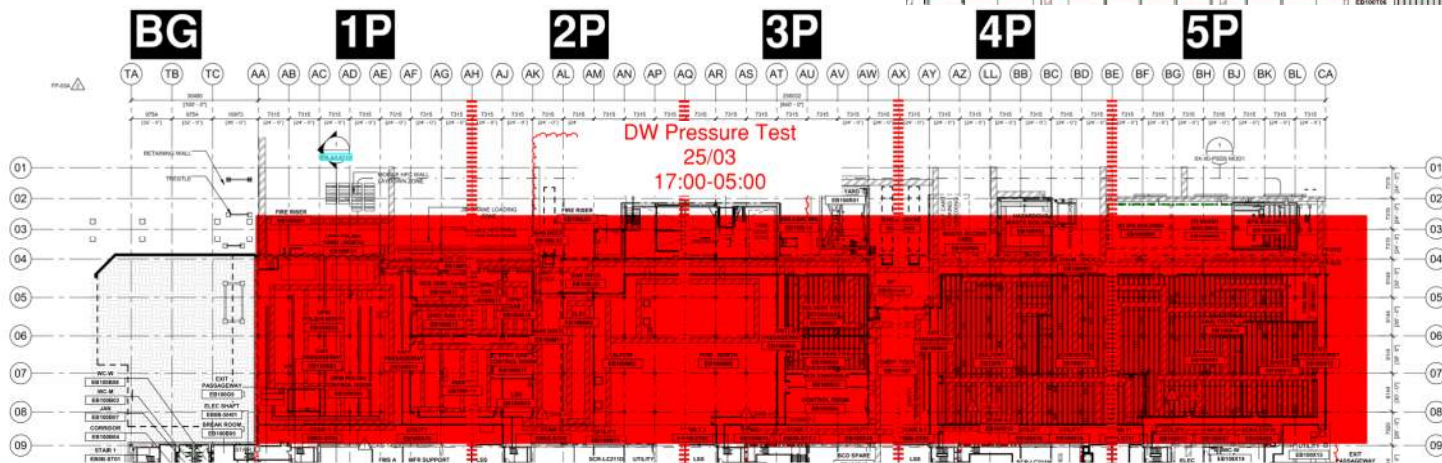
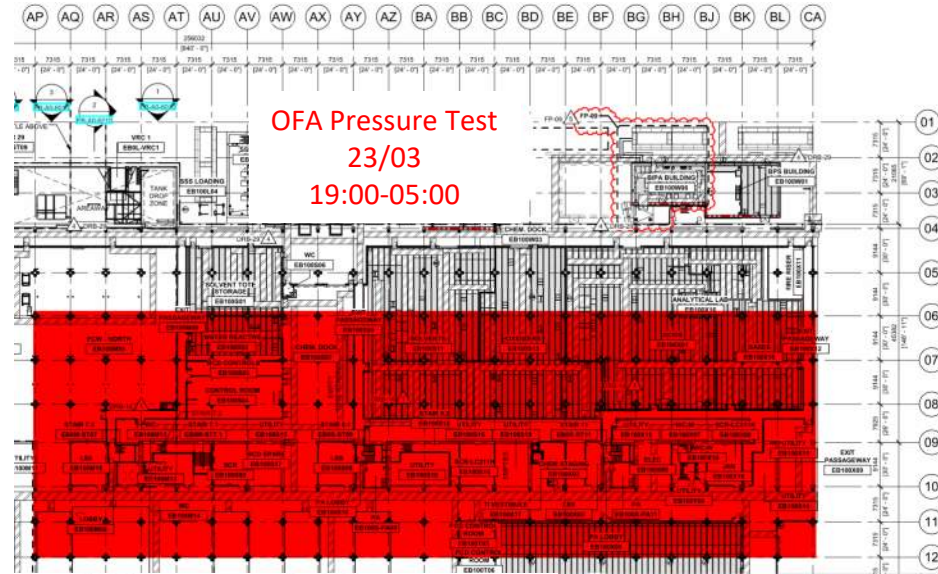


PSSS Roof  
2SA





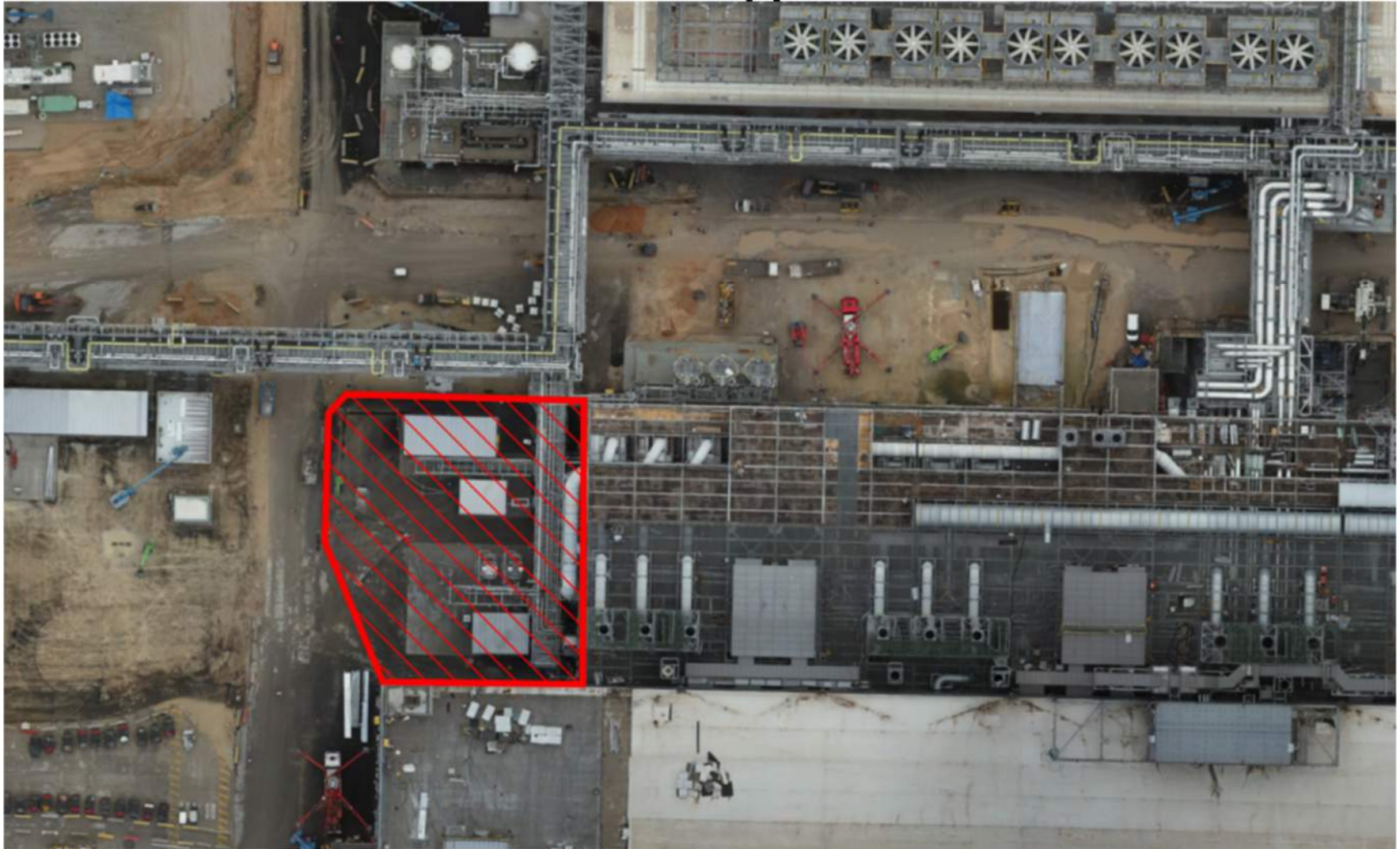
# PSSS Pressure Testing



## Utility Level 1YA



# BGY GN2 Bursting Zone WW13





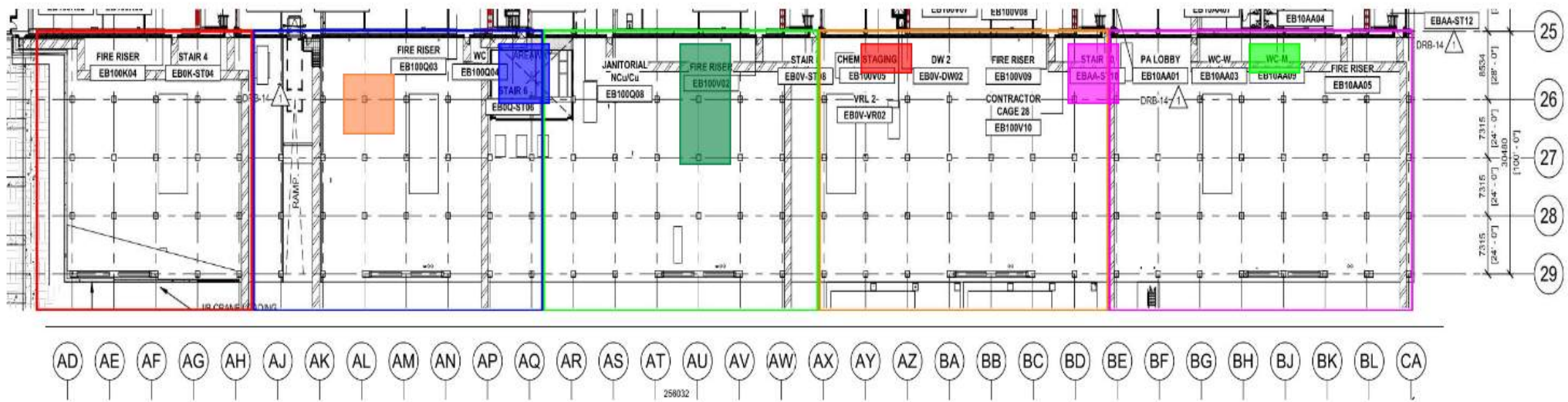
# WJG – UL

\*Pach Taas - installation of modules in west SUT.  
 \* Pach Taas - completion of spools and lindapters on UPN 138

\*Afcon - Installation of lighting and cable pulling

\* Carmel Bidud - installation of air ducts  
 \* Afcon - cacbe pulling from roof to VFD and UL

\*MB - installation of FP pipe support



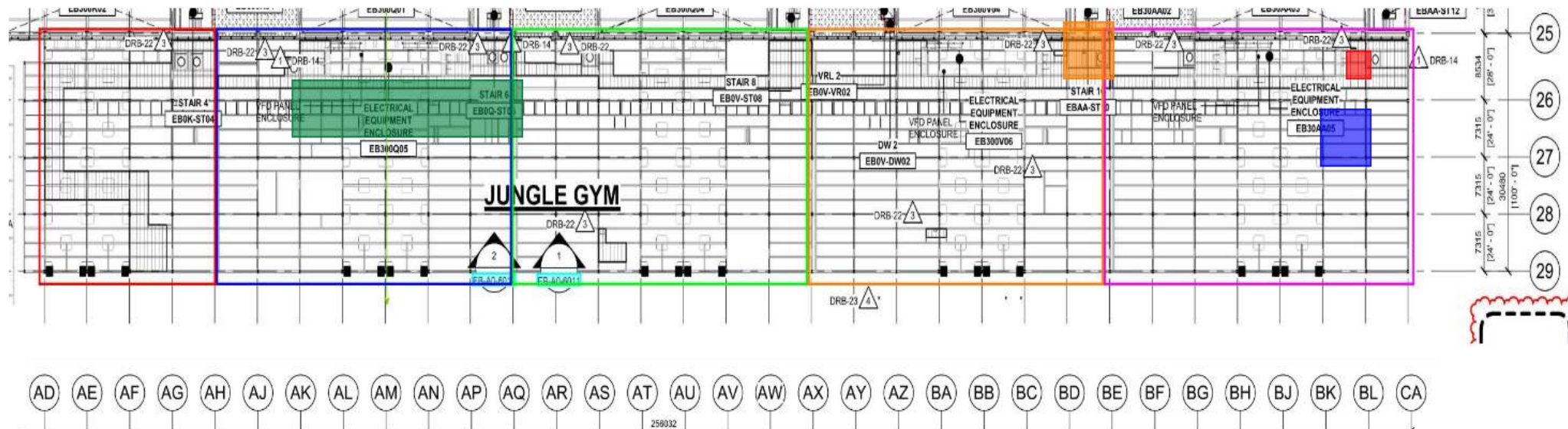


## WJG – Lift 2

\*Carmel bidud/Taper-tech - building handrail and dismantling of planking for stiffeners

\* Afcon - pulling cables to VFD and pulling cables to UL

\* Chemo - continuing insulation  
\* Pach Taas - connection of single stacks to exhaust fans



## WJG – Lift 3

ASD- erection of scaffolds for installing gutters and flashing

\* Stage design - erection of scaffold for connecting stacks to outriggers

\* Pach Taas - working on installation of AV bypass structure

\* SN -cutting grating penetrations





# CUB 1 9 working days to room ready



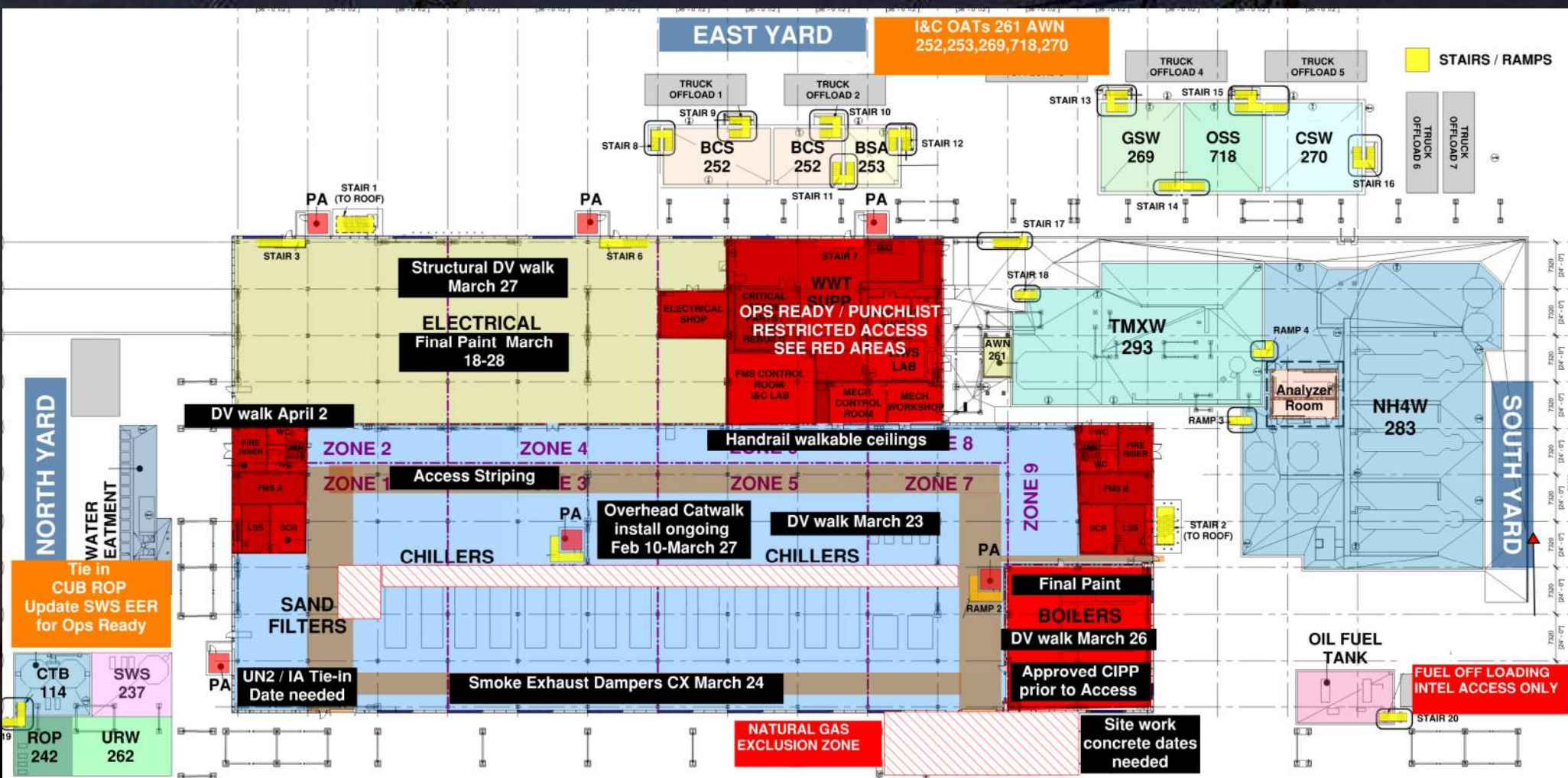


# CUB 1 Closing time push to finish line



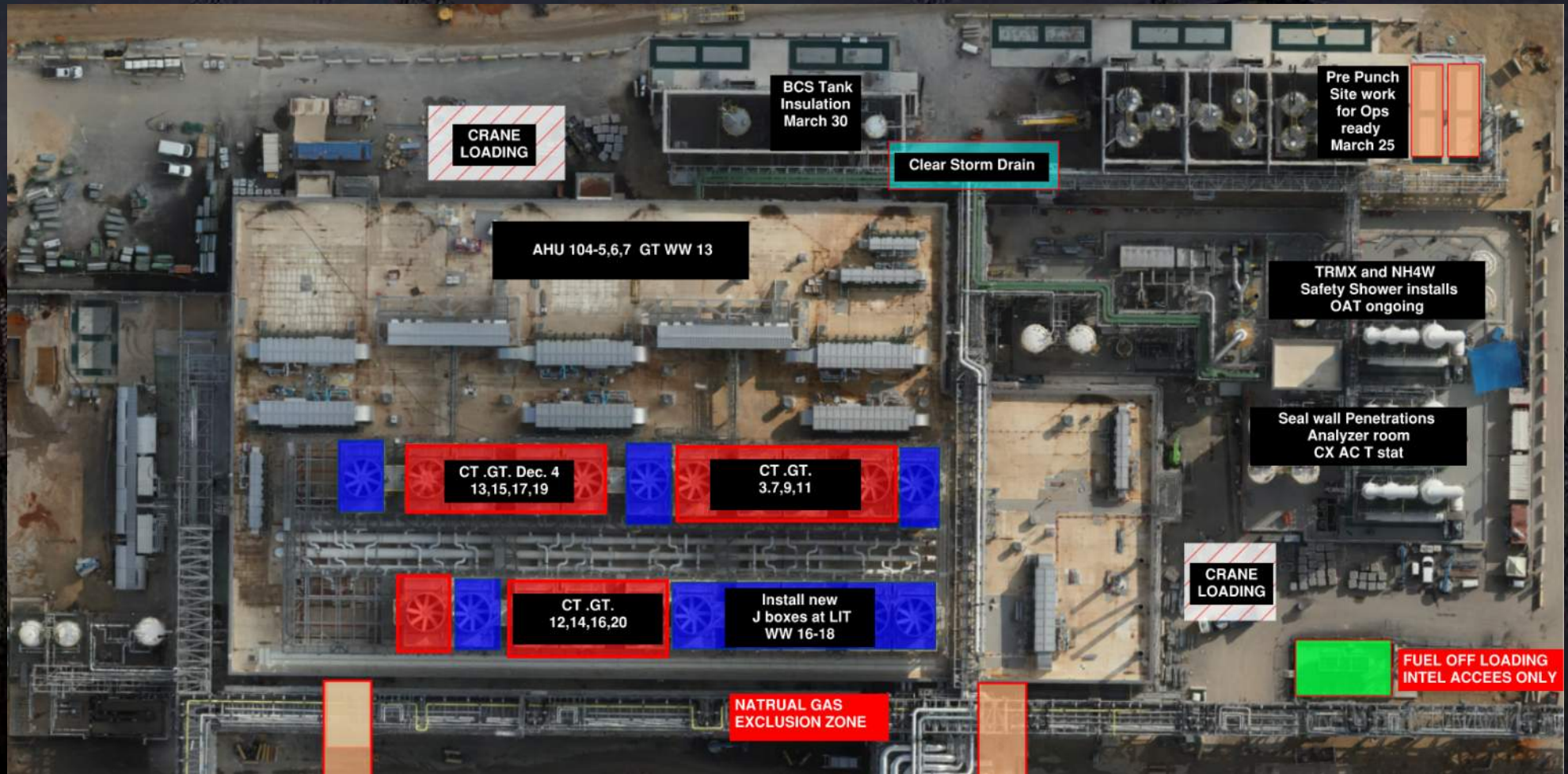


# CUB 1

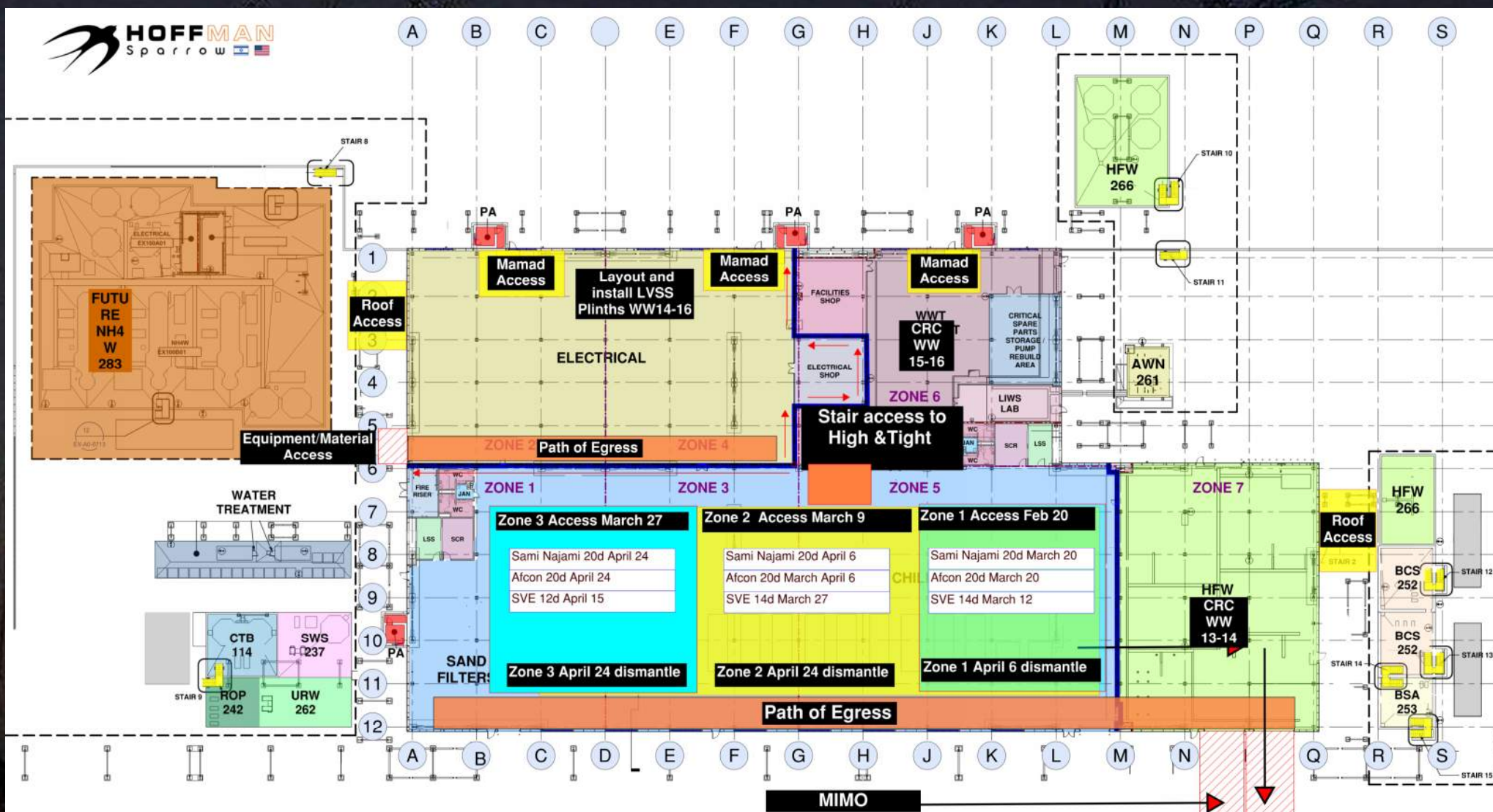




# CUB 1 – EXTERIOR/ROOF









# CUB 2 – EXTERIOR/ROOF











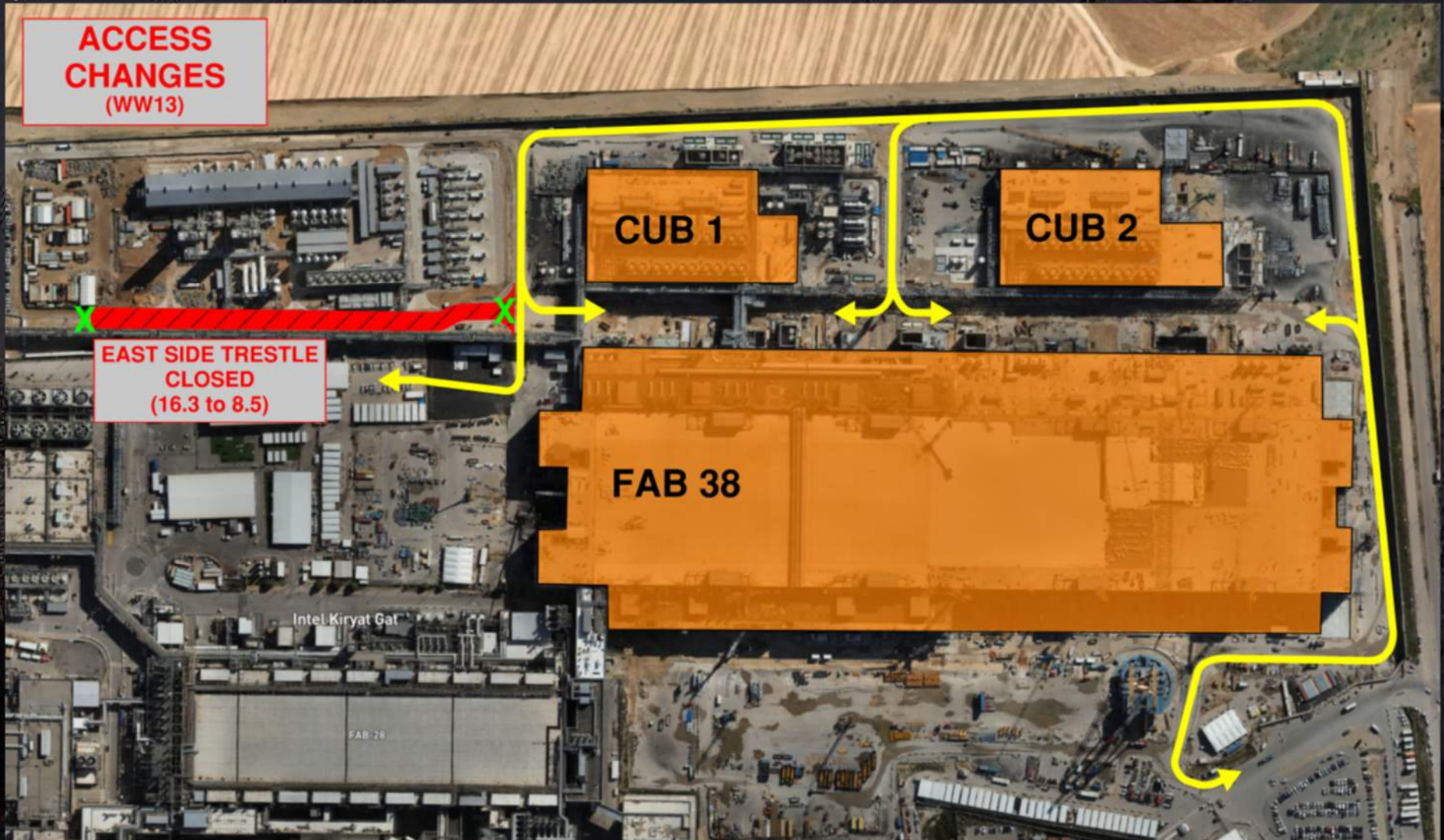
**HOFFMAN CONSTRUCTION COMPANY**



# Daily Coordination Meeting

Site Logistics

North





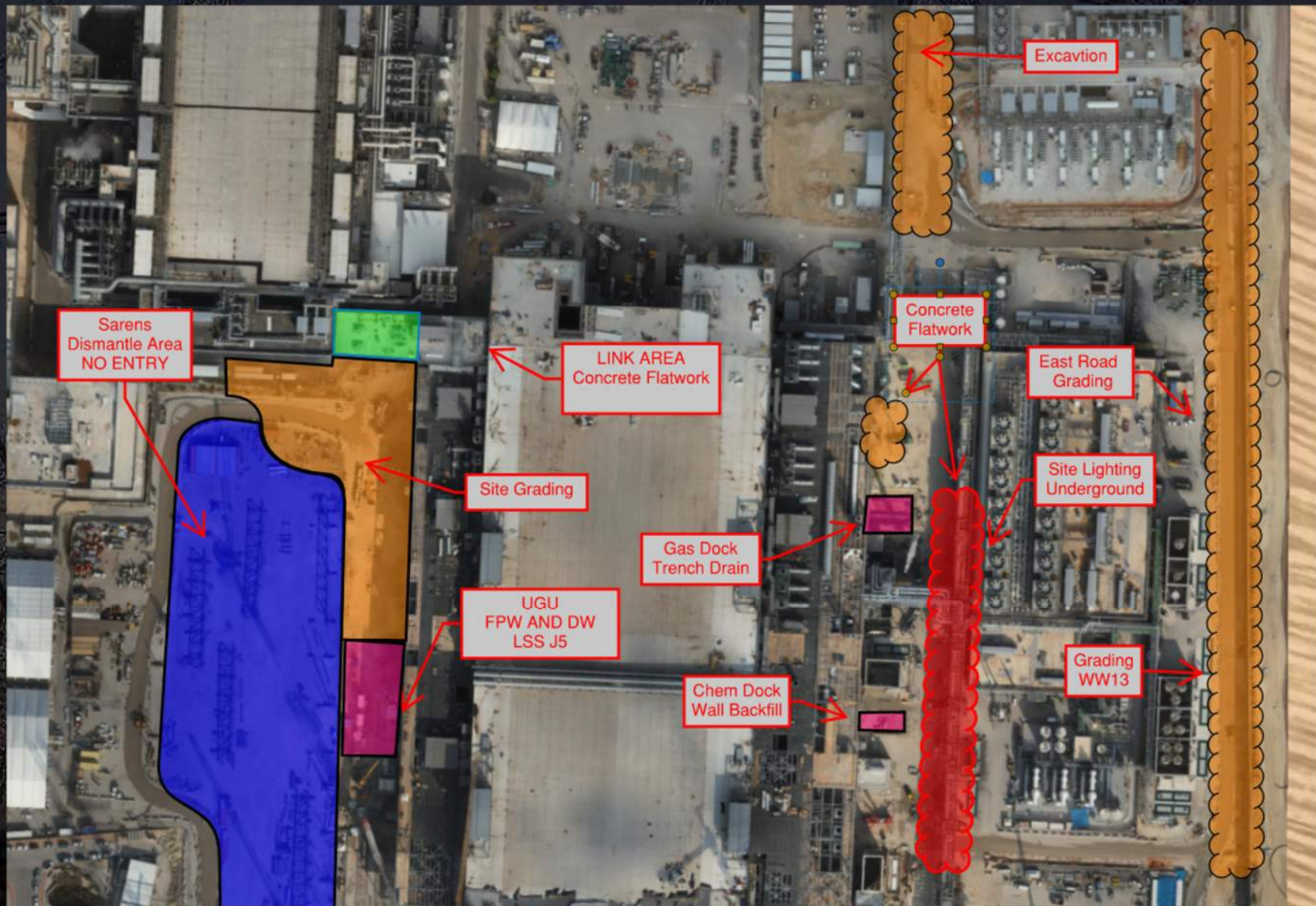


HOFFMAN CONSTRUCTION COMPANY



# Daily Coordination Meeting

Site Logistics  
North







**HOFFMAN CONSTRUCTION COMPANY**



# Daily Coordination Meeting

Site Logistics

South







HOFFMAN CONSTRUCTION COMPANY



# Daily Coordination Meeting

## MAMAD Locations

MAMAD LOCATIONS (19-March-2025)

■ LARGE  
■ SMALL  
■ BUILDING





# Area Assessment

When arriving at the work area, before starting any work, a scan and inspection of the area must be carried out to ensure it is free of hazards or dangers. If risks cannot be minimized or eliminated, at least be aware of them.

Here is a list of some topics that need to be checked before starting work:

- Visual inspection of the work area.
- Check for any active or live systems around us.
- Check for any openings or holes in the area, including ensuring the proper covering of openings or holes. If a hazard is found, report it and do not begin working near the hazard.
- Verify approval for all relevant plans and forms for the task (RAMS, fall arrest plan, confined space, hot work, working at height, HRA, and more).



# Daily Coordination Meeting



14:00 Sign In