

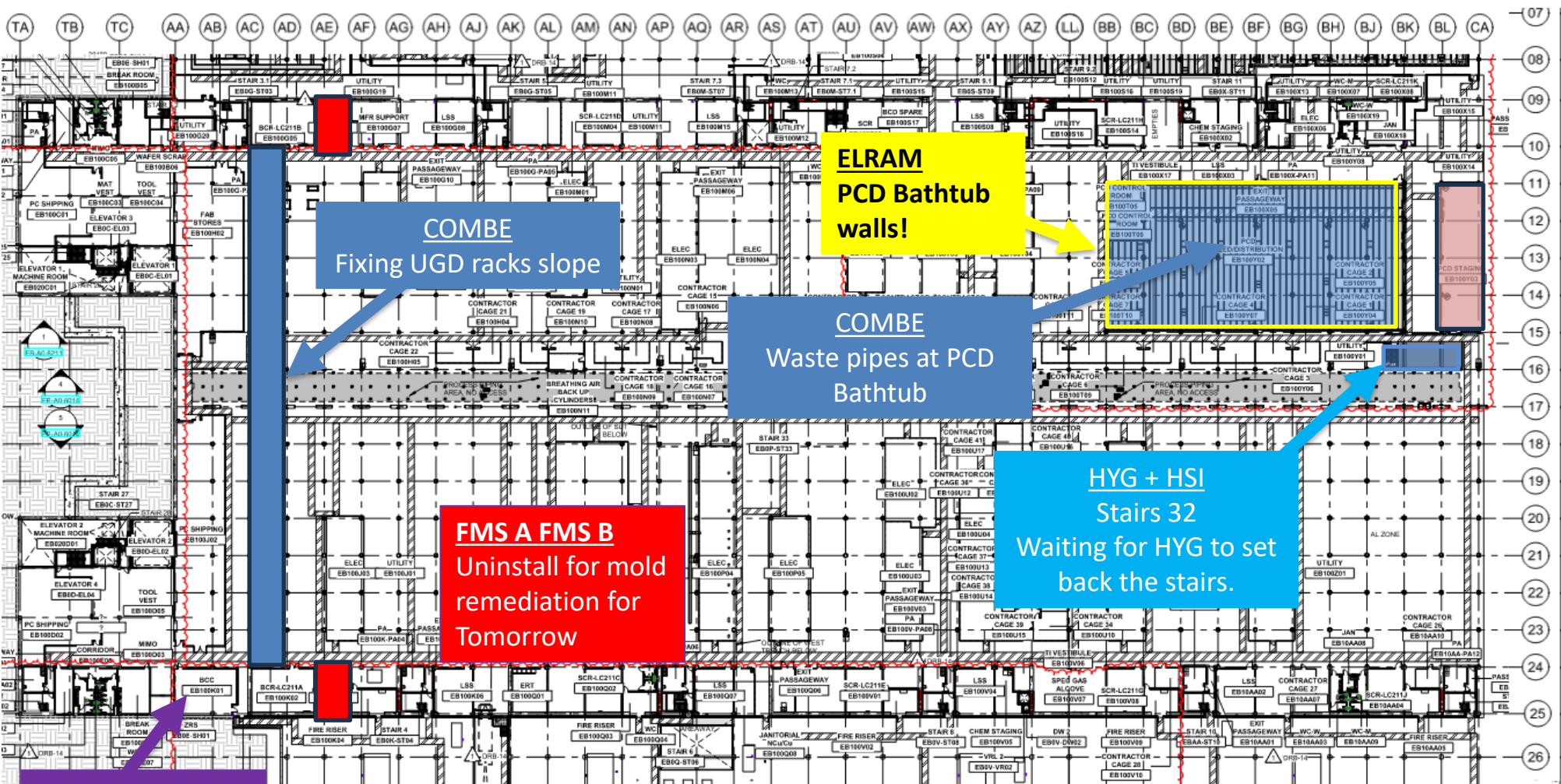
# Daily Coordination Meeting

## General Topics:

- Red rope
- Vehicle passes- changing this week



# UTILITY LEVEL MOD1





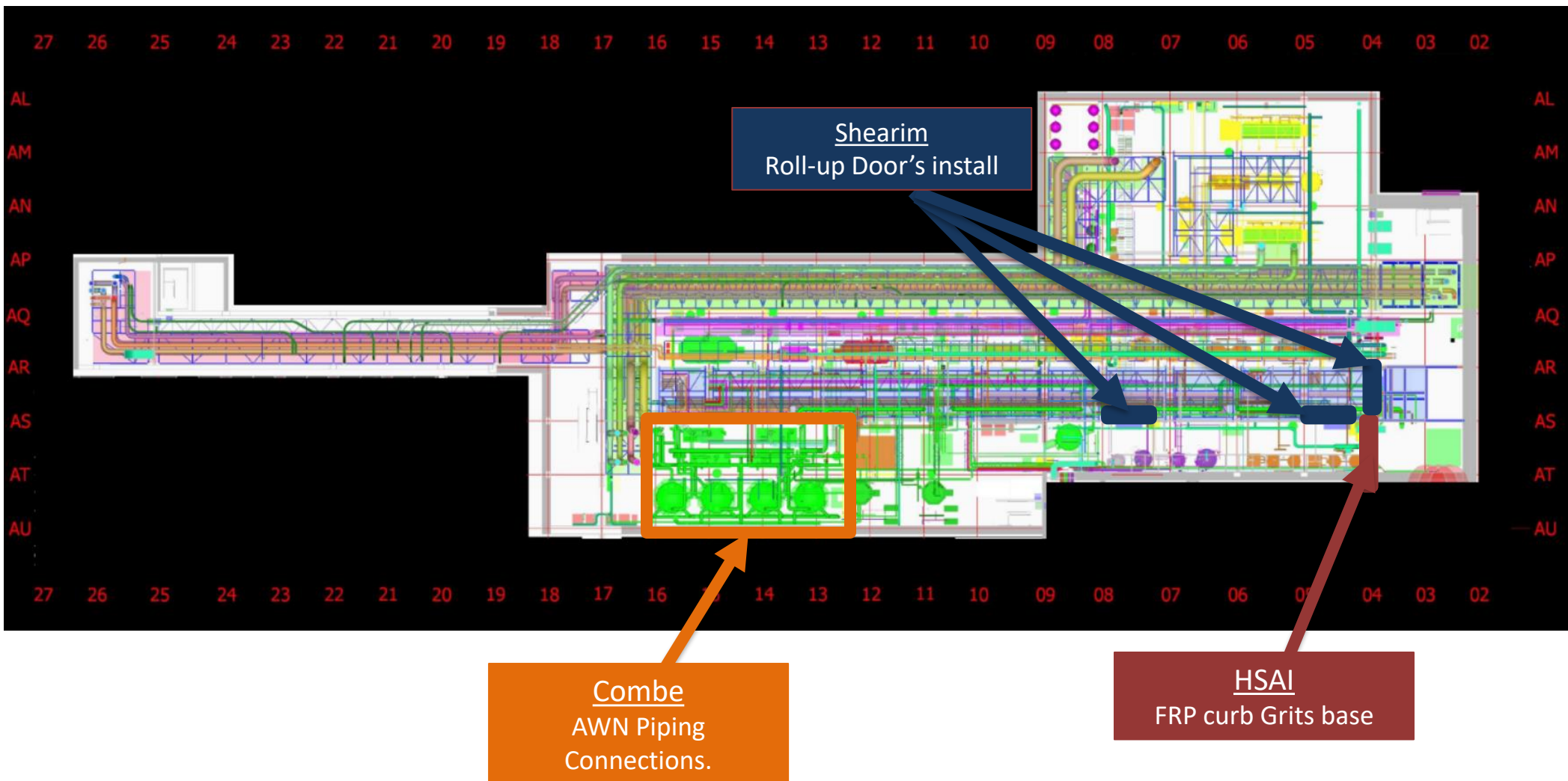


**Malhimim  
8E 10W  
Sprinklers install**

**MEPTAGON  
9W Bridge strut install  
8E Start 7/28**



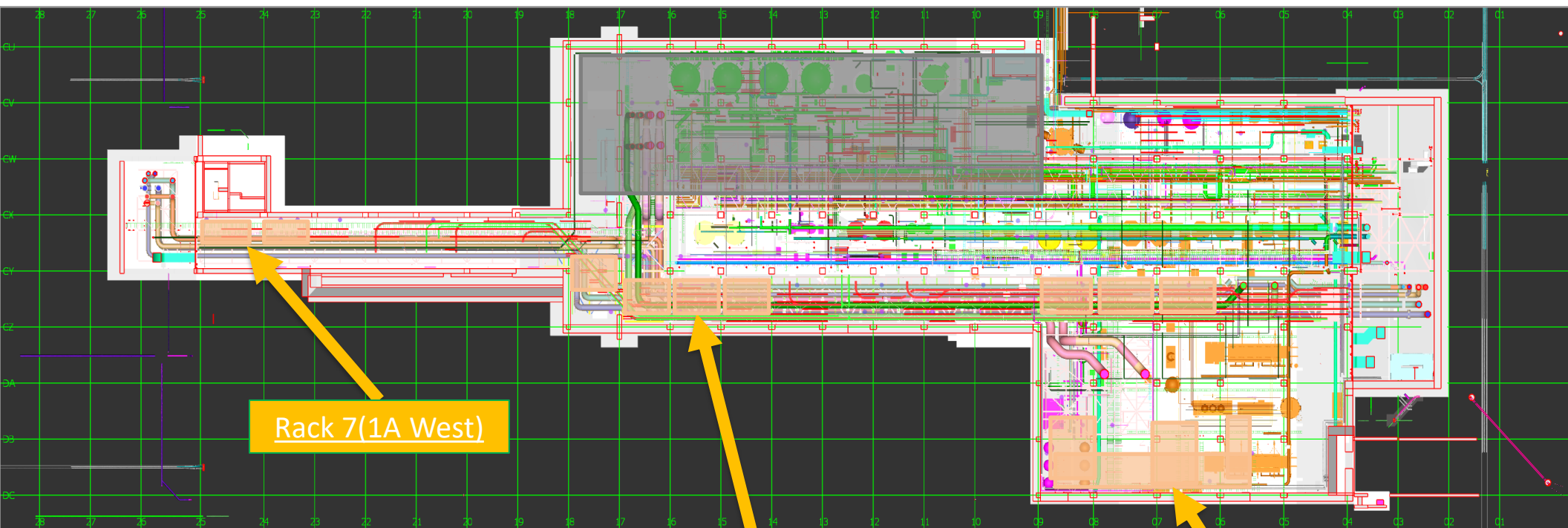
## SUT 38.1 LEVEL







## SUT 38.2 LEVEL



Rack 7(1A West)

1A Rack  
Lifting

8 Rack

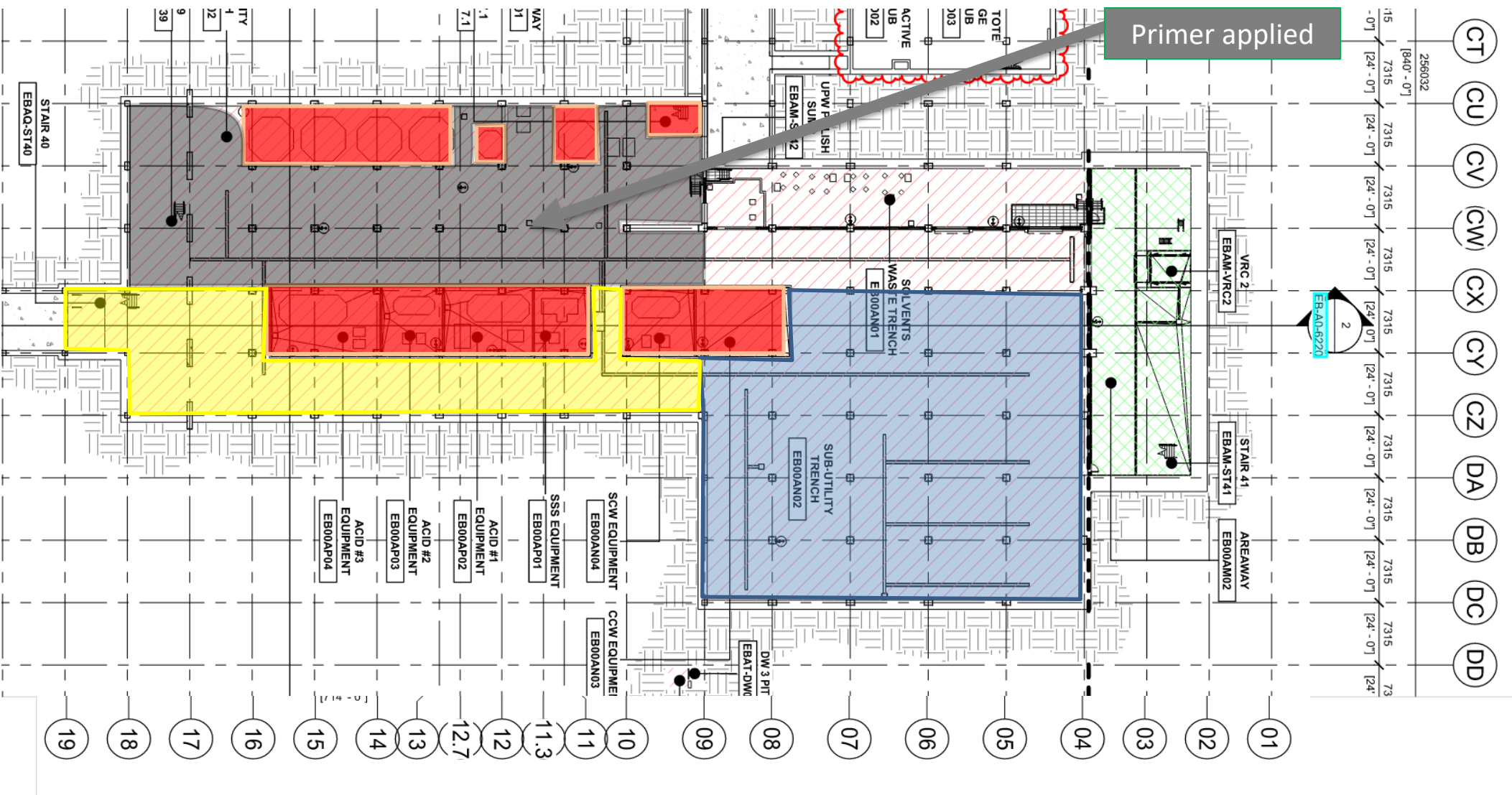
SKE  
H&T  
CRW  
Move-In date ?

Vesda  
H&T



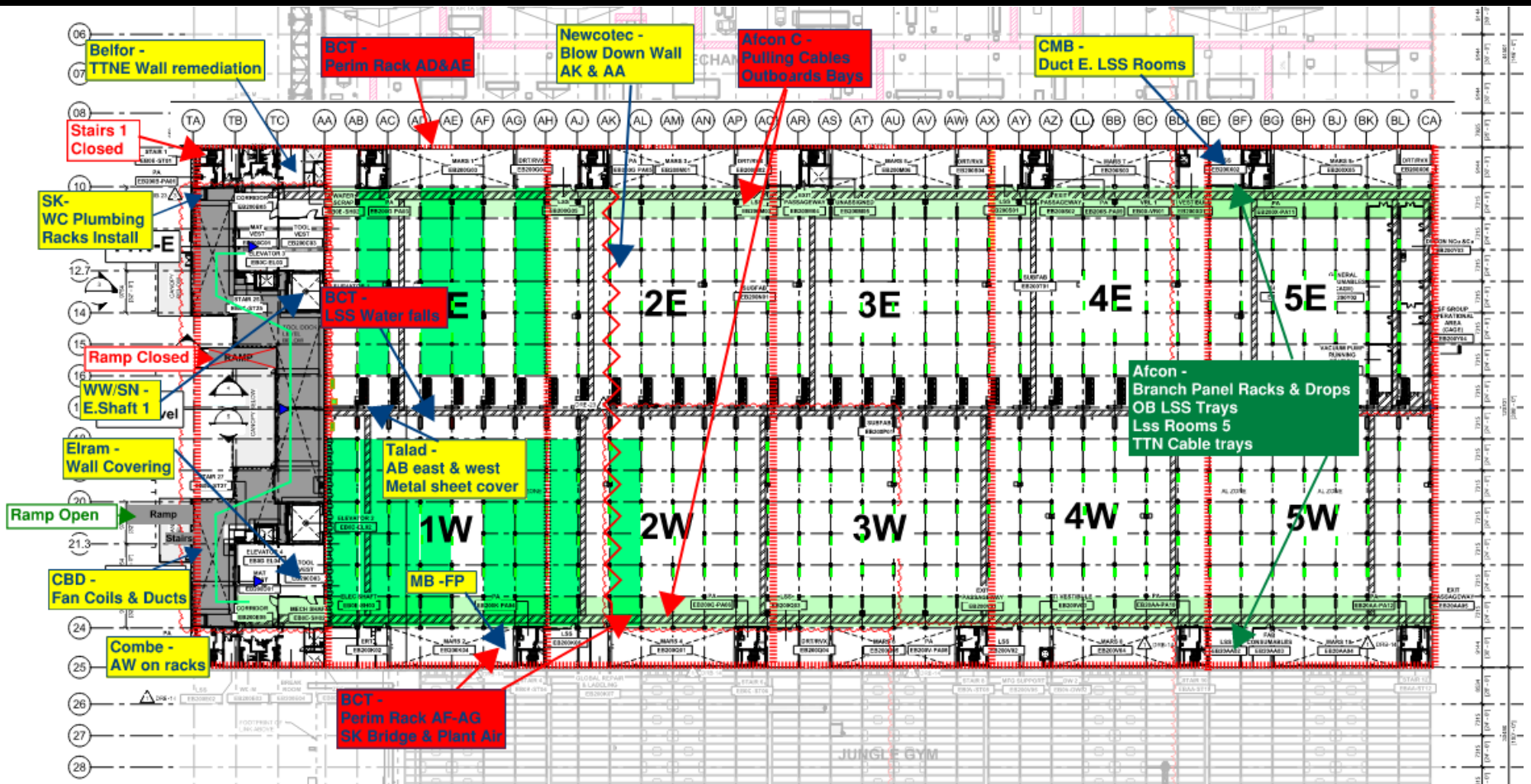
## SUT 38.2 LEVEL

### CRC Plan

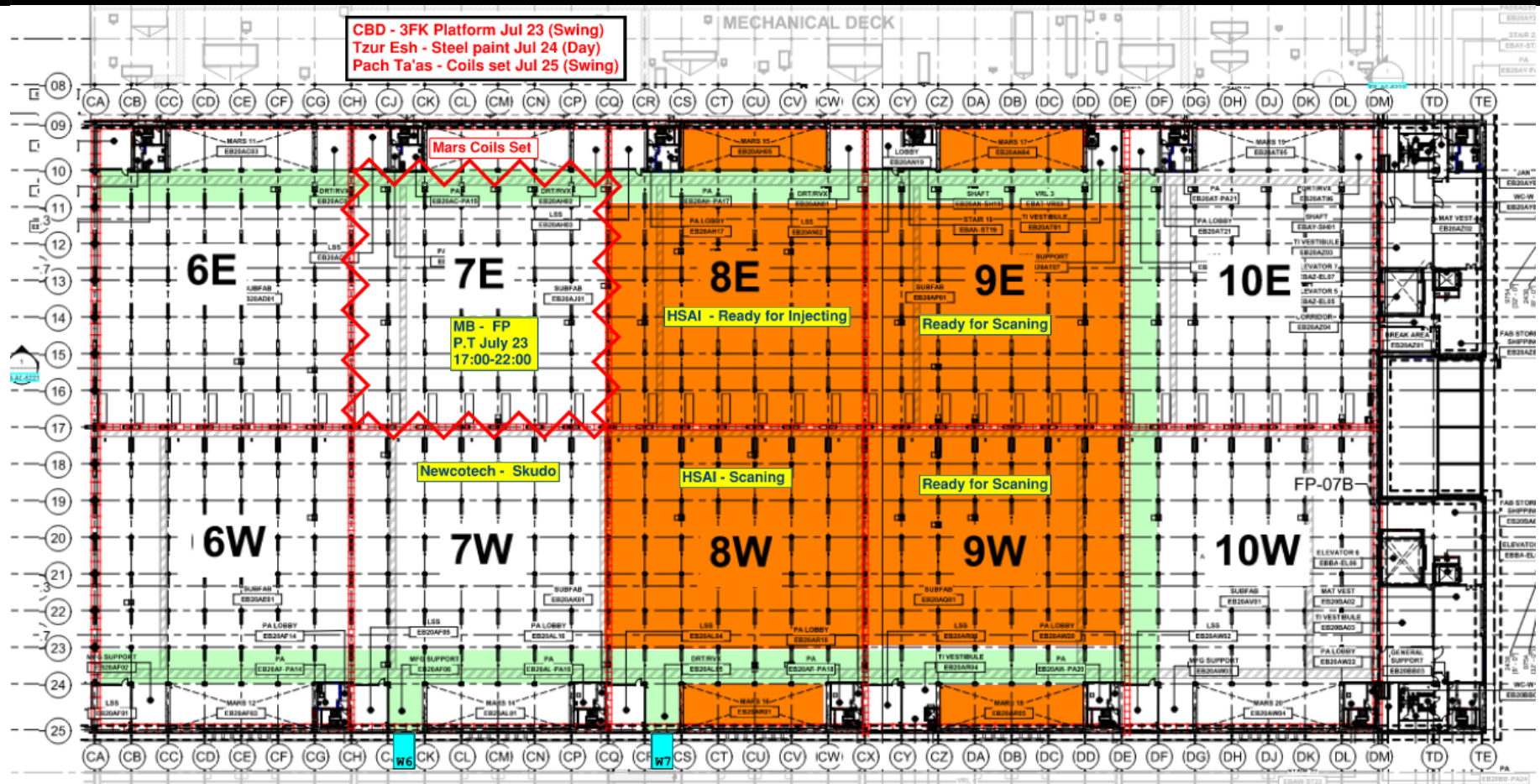




# SUBFAB BUILDOUT MOD 1



# SUBFAB BUILDOUT MOD 2







BELFOR-1<sup>ST</sup> DAY

USING BOOMLIFT

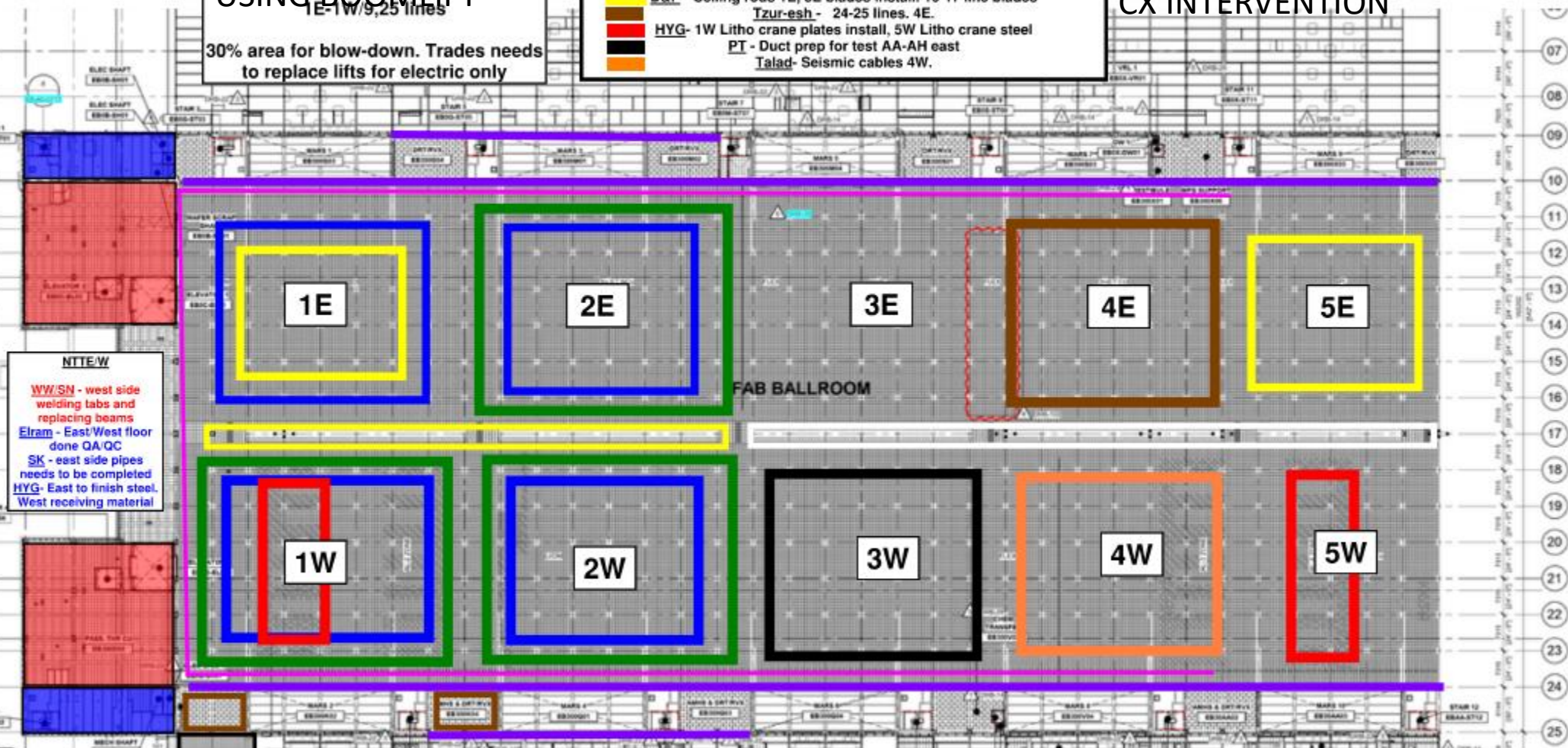
30% area for blow-down. Trades needs to replace lifts for electric only

**CR level:**

- Afcon - Cable trays, modules and stickers 1W, 2E, 2W
- MB- 1E drops, 1W drops. 2E-2W needs to start
- Elram - 10, 24 columns fix. 9, 25 columns on going
- Meptagon - Zero tolerance pipes 4E-4W
- D&P - Ceiling rods 1E, 5E blades install. 16-17 line blades
- Tzur-esh - 24-25 lines. 4E.
- HYG- 1W Litho crane plates install, 5W Litho crane steel
- PT - Duct prep for test AA-AH east
- Talad- Seismic cables 4W.

STICKERS!

MB CLASH CHEMO  
CX INTERVENTION



**NTTE/W**

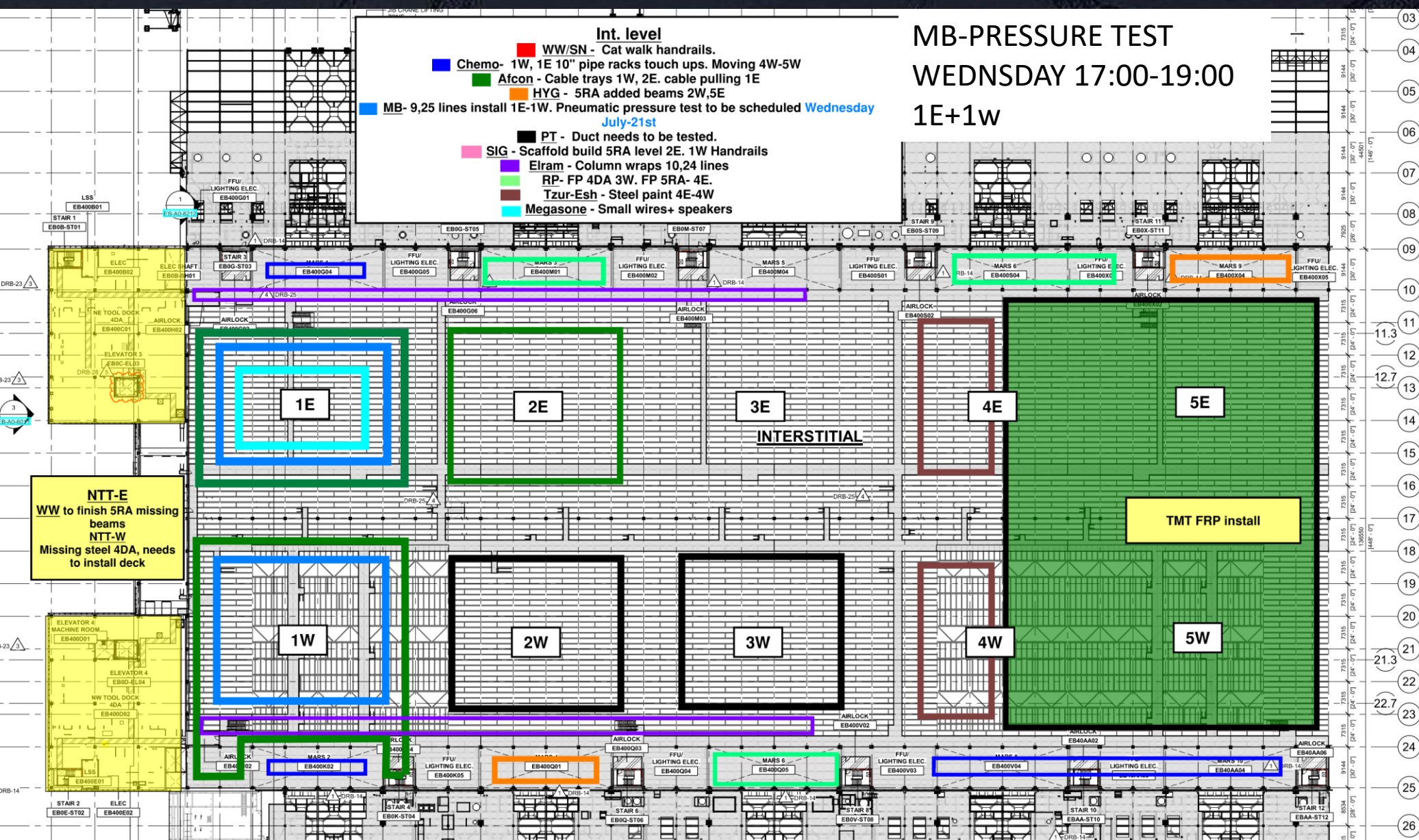
WW/SN - west side welding tabs and replacing beams  
Elram - East/West floor done QA/QC  
SK - east side pipes needs to be completed  
HYG- East to finish steel.  
West receiving material

**Link**  
RP - Fire proofing  
D&P - Bolts torque

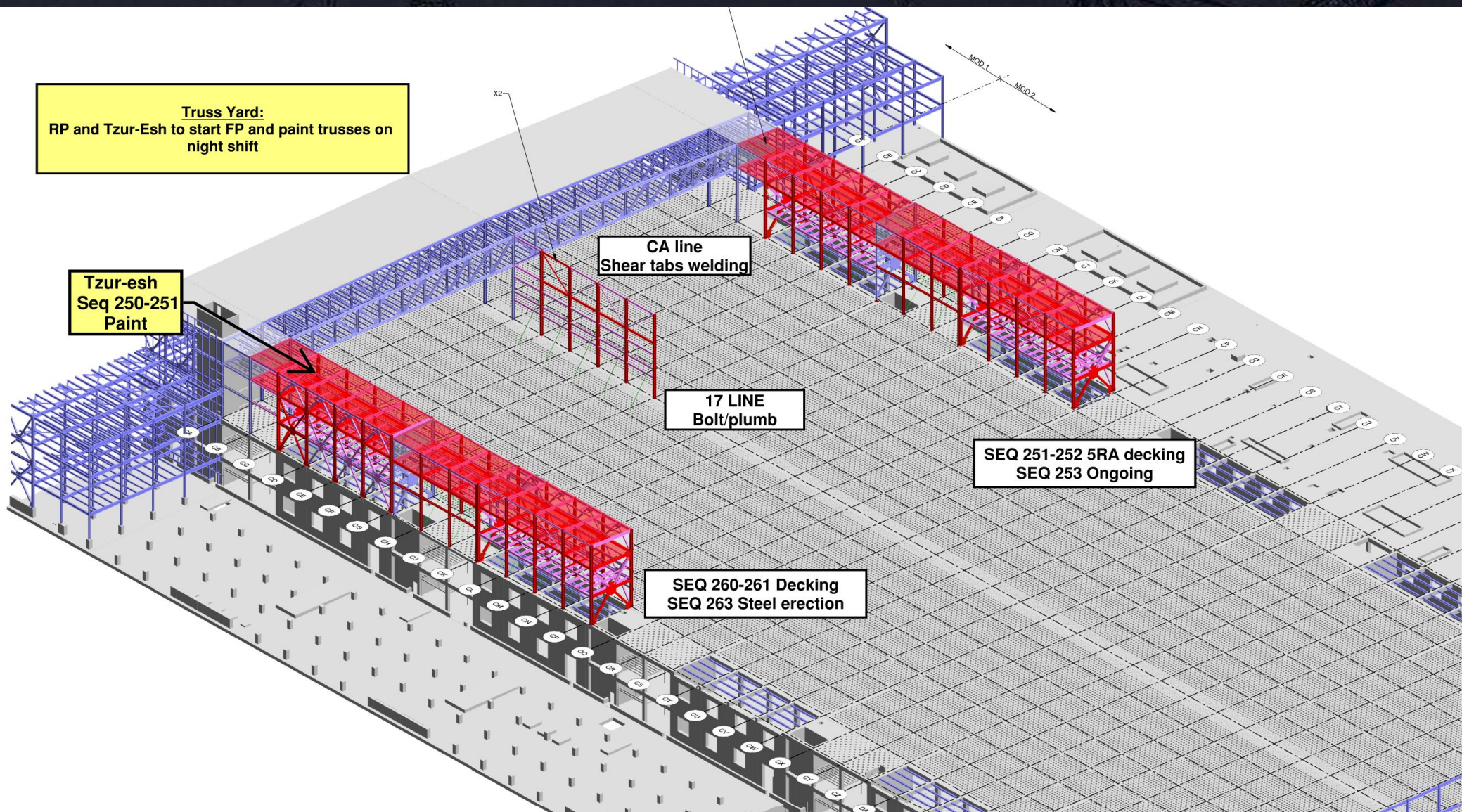
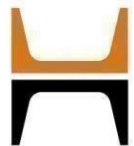
Waiting for mb iff to be revised  
D&p-pass qc qa to allow rp frp the blades.

ELRAM STARTED  
DECREASING OPEN COR'S

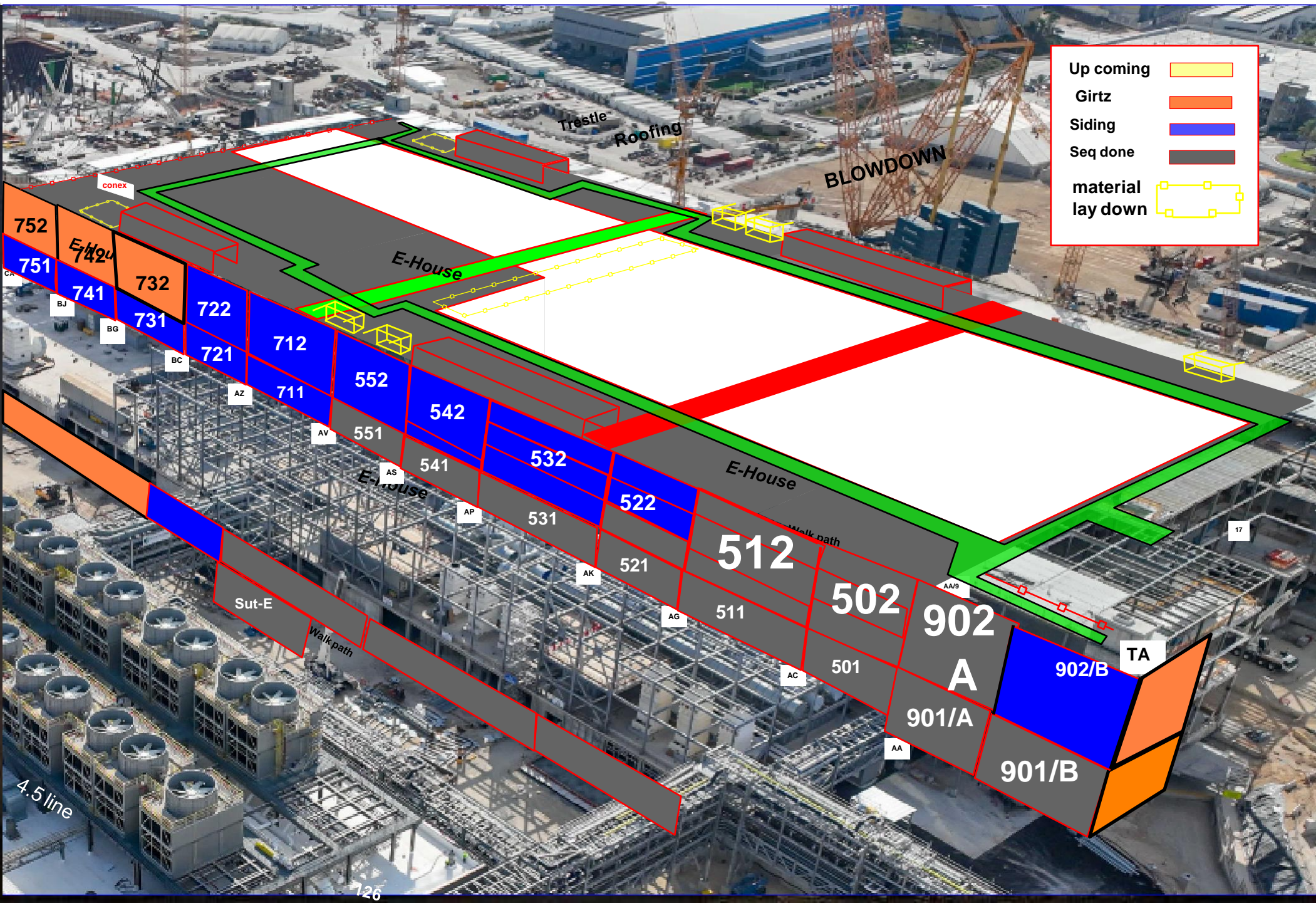




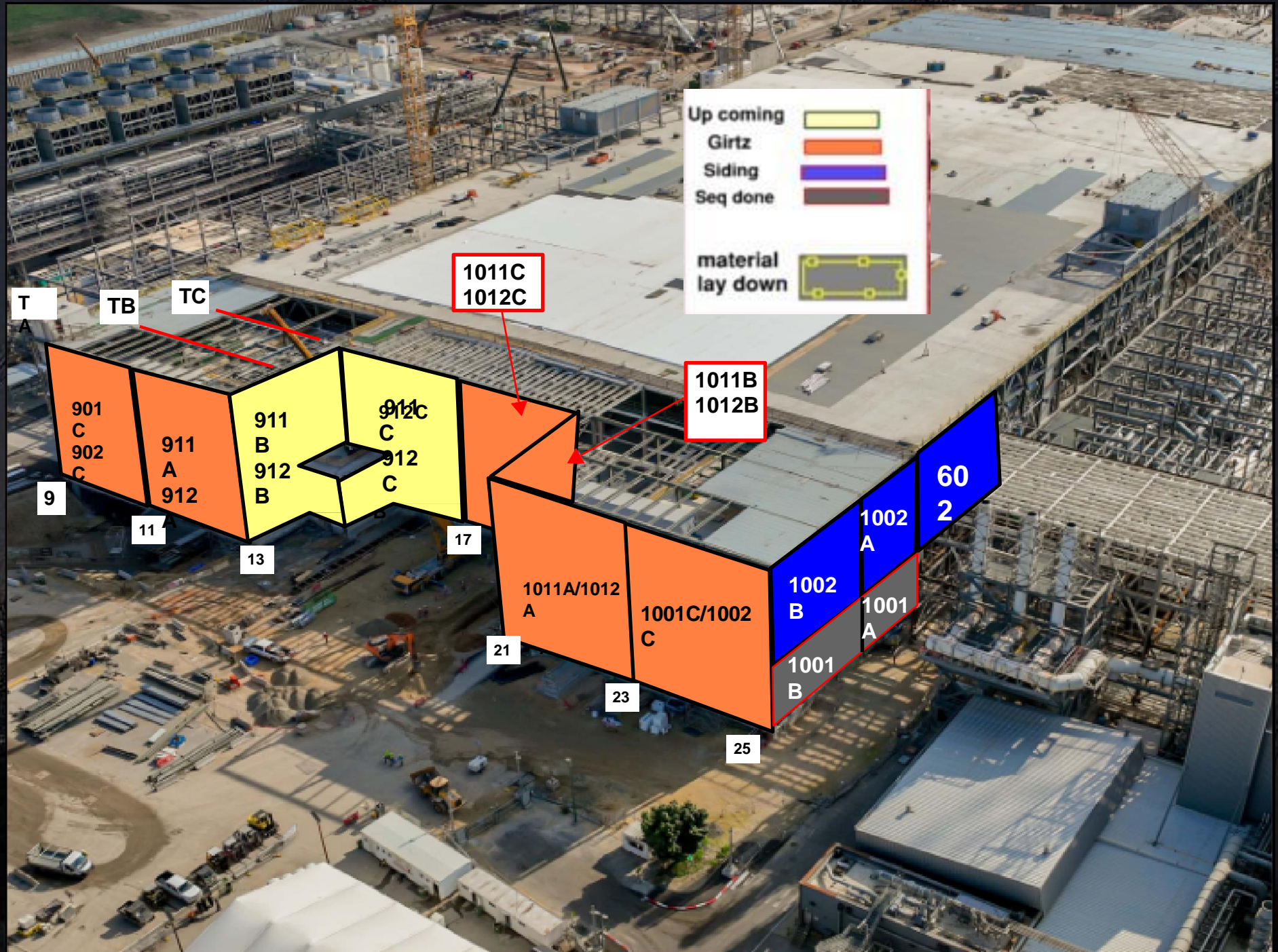




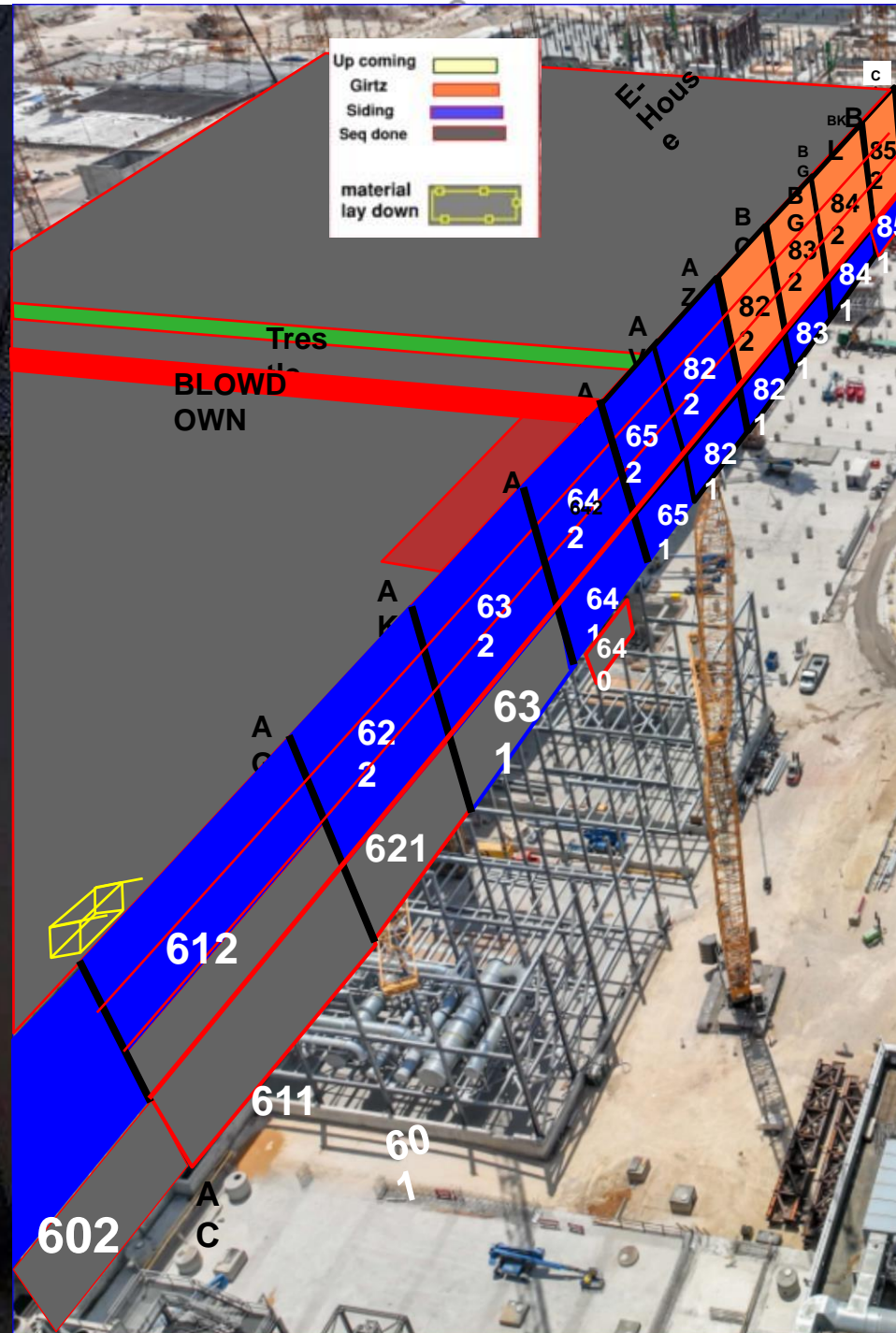








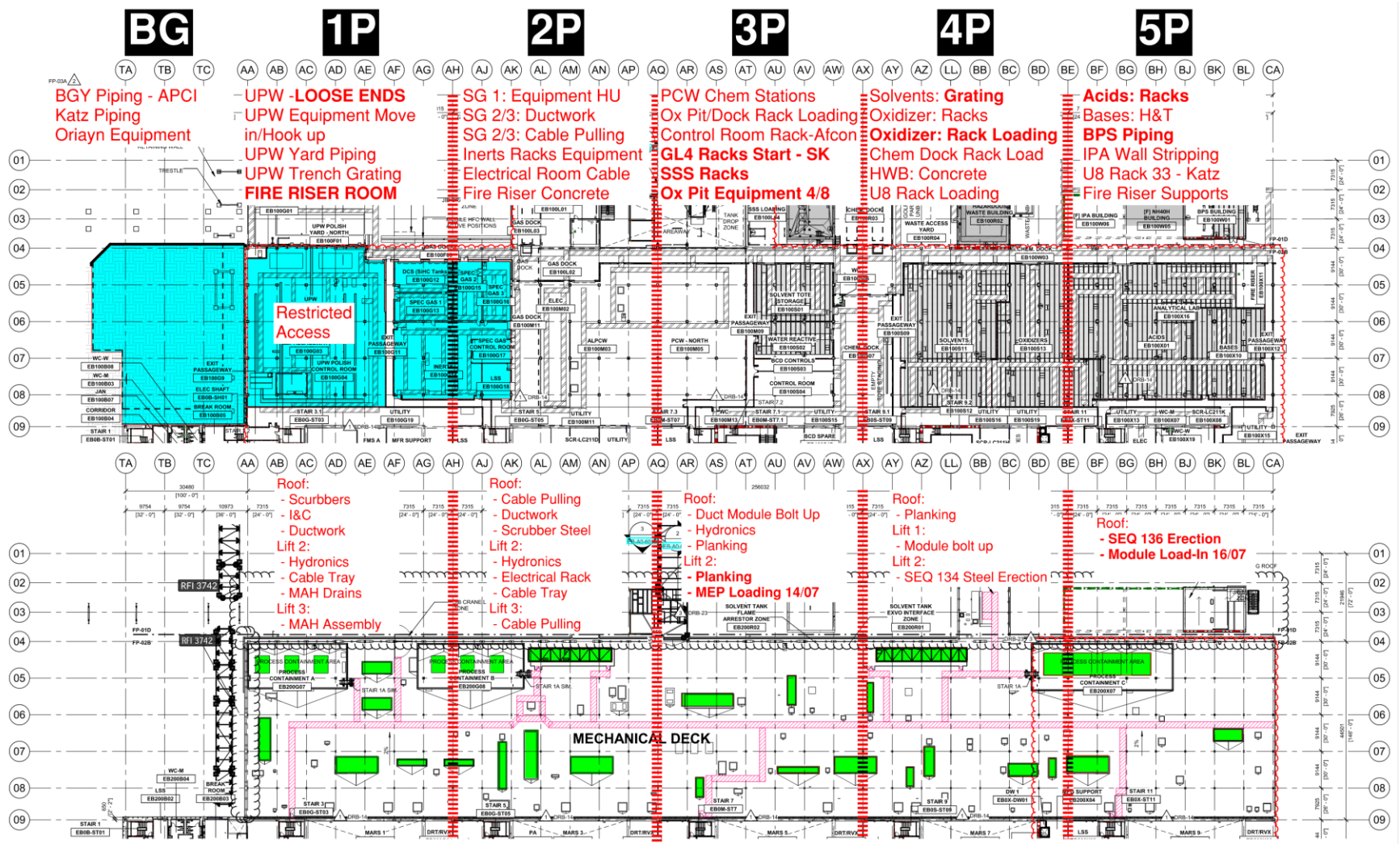




# PSSS.1

Utility Level  
1YA

PSSS Roof  
2SA

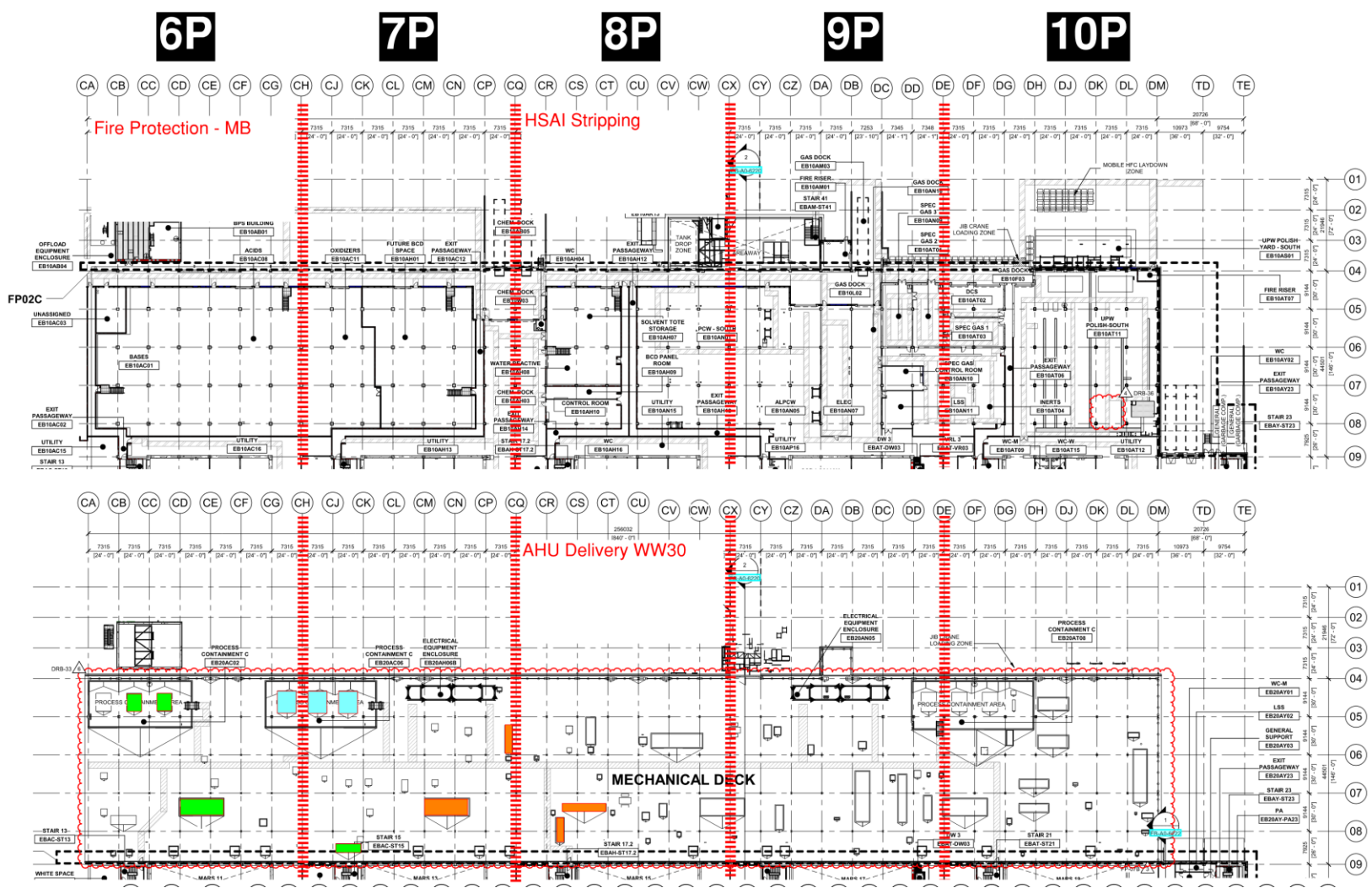




# PSSS.2

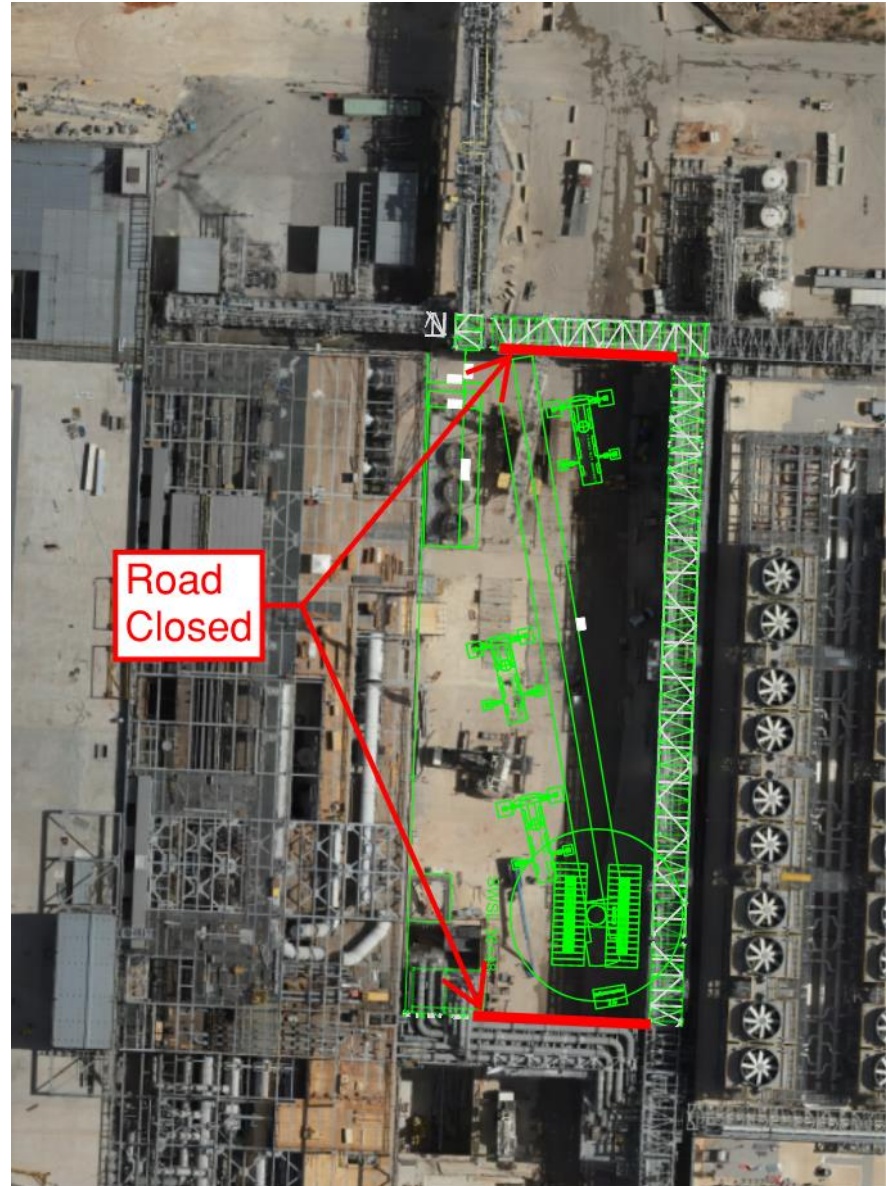
Utility Level  
1YA

PSSS Roof  
2SA

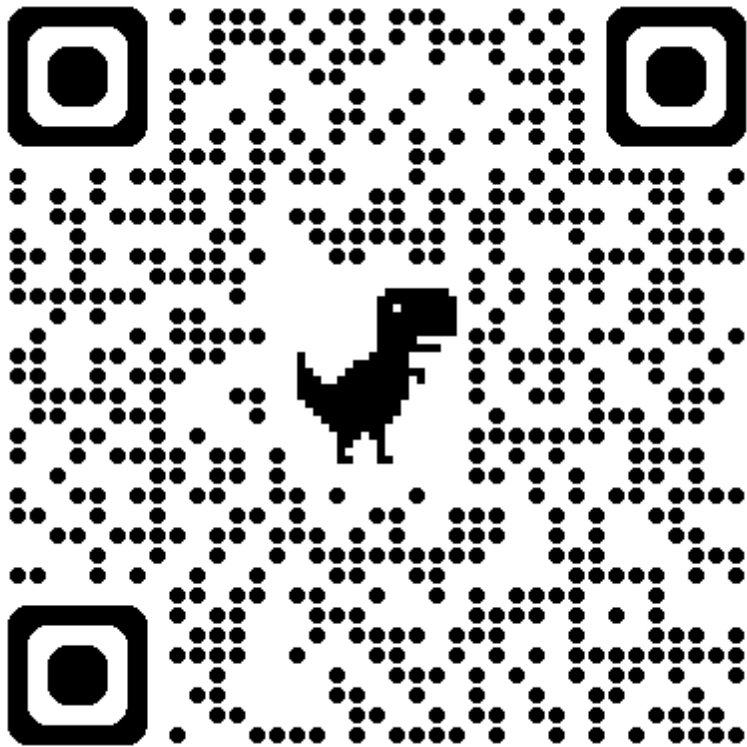


# PSSS DMAG DISMANTLE

- July 21<sup>st</sup>-25<sup>th</sup>
  - UPW MIMO CLOSED
  - GAS MIMO CLOSED
  - GUT ROAD BLOCKED FROM TRESTLE BRIDGE TO TRESTLE BRIDGE



# EJG/WJG Grating/Planking Penetrations



**JG Grating/Planking Penetrations**

**Type of Penetration \***  
What side of the building is the penetration located?

**Location of Penetration \***  
Provide gridlines of where the penetration is needed

**Zone of Penetration \***  
What zone is the penetration

**Lift of Penetration \***  
What lift of Steel is the penetration

**Gridlines of Penetration \***  
Input the gridlines of where the penetration is located

**Size of Penetration \***  
Put size of penetration required in mm

**Contact Company \***

**Contact Number \***  
Contact number in the case of questions

**Contact Email \***  
Email of person to get notifications on penetration

**Layout Confirmation \***  
Confirmation that layout has been confirmed by requesting contractor. If layout is incorrect, the requesting contractor will be responsible for all fixes, build backs, replacement, etc. cost associated with the incorrect layout.  
☐

**Photo of Layout in the field \***  
Upload a photo of the layout once complete  

Drag and drop files here or [browse files](#)

☐ Send me a copy of my responses





# WJG 01J, 02J LIFT 2 & 3







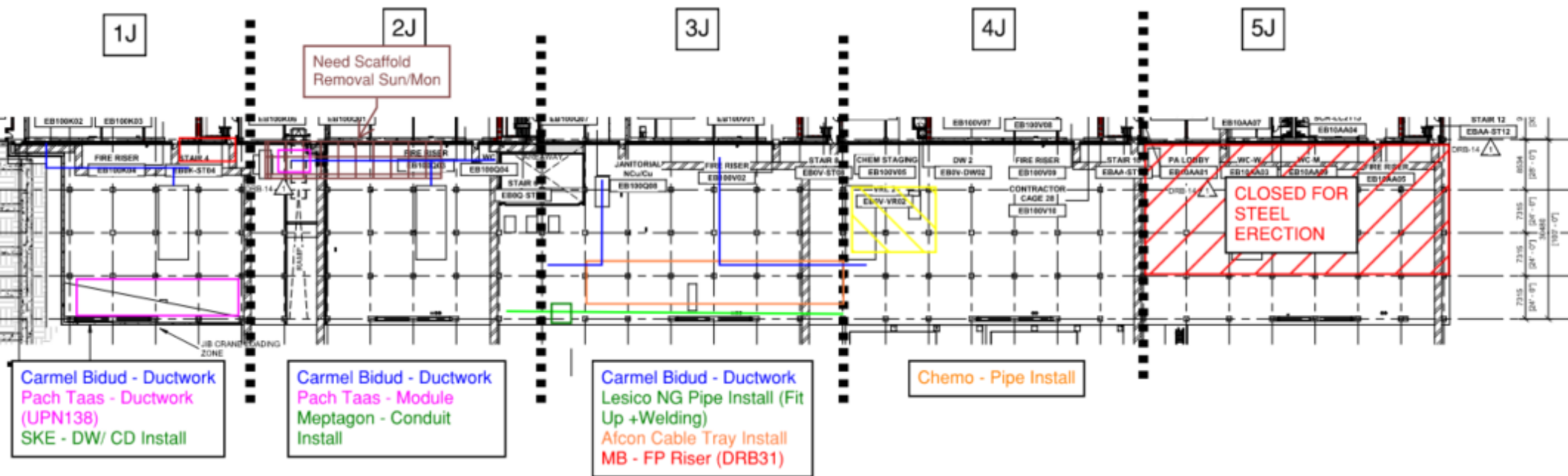
# WJG 03J, 04J, 05J LIFT 2 & 3

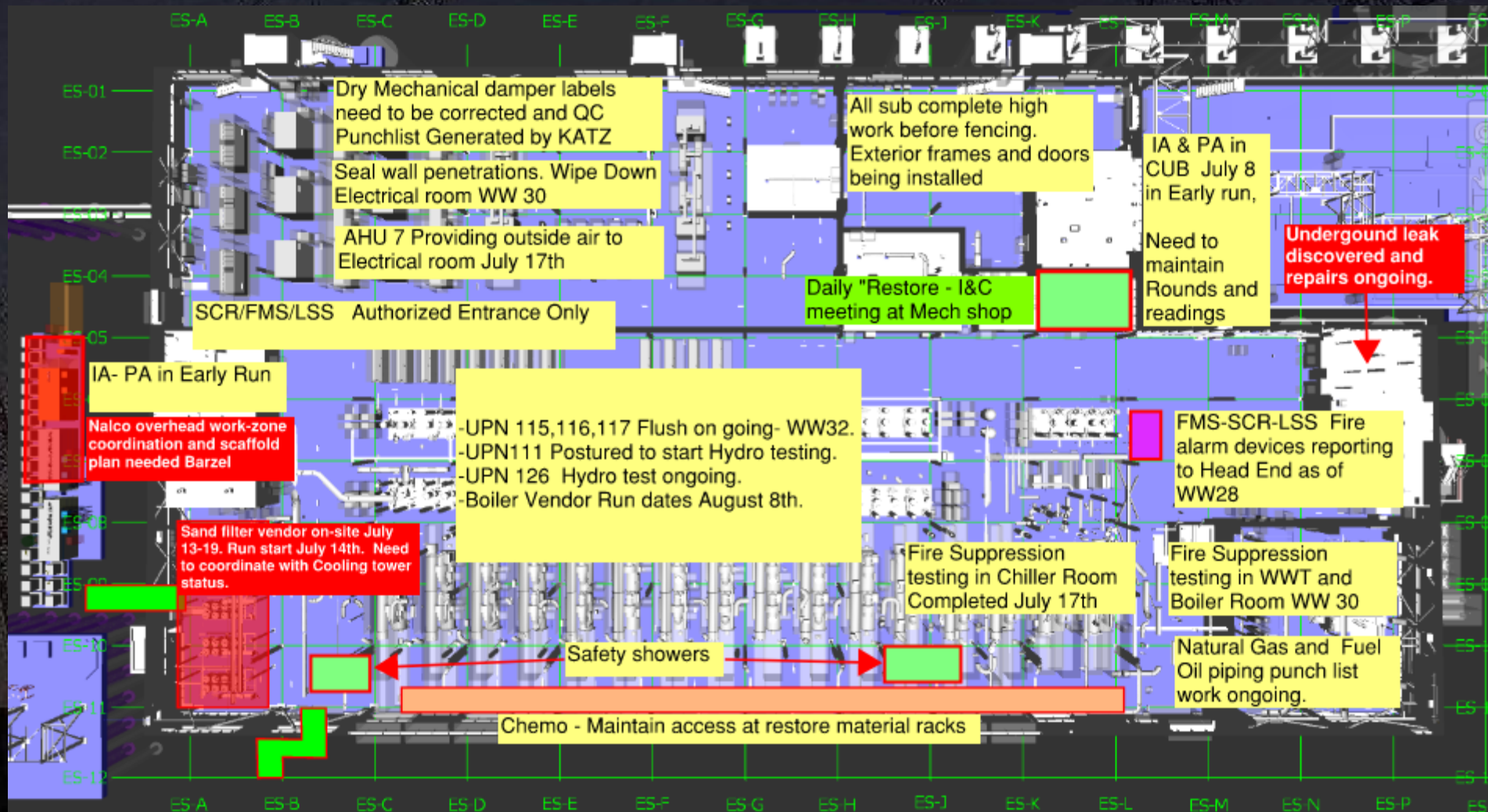




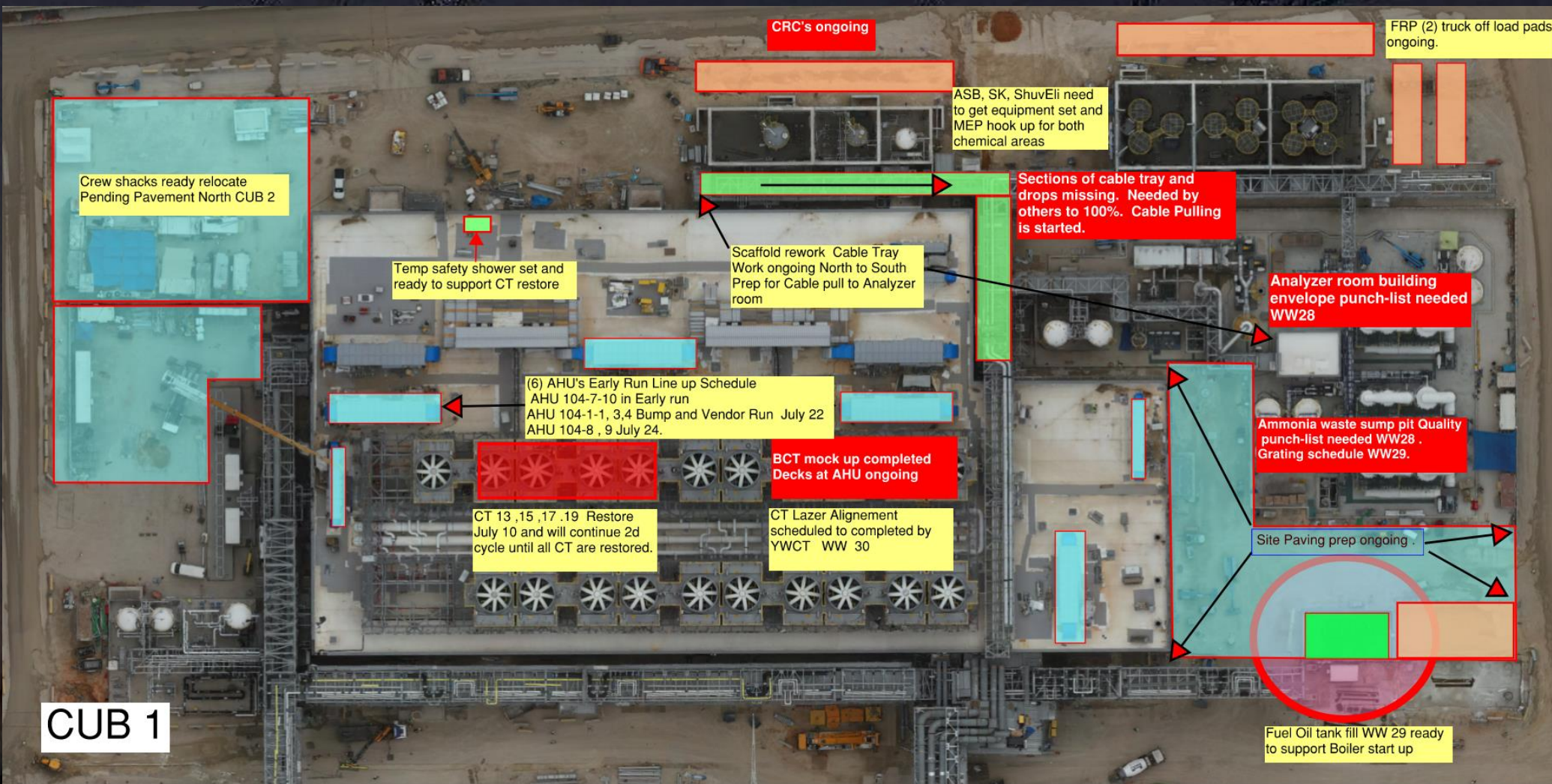


# WJG UTILITY LEVEL BUILD OUT

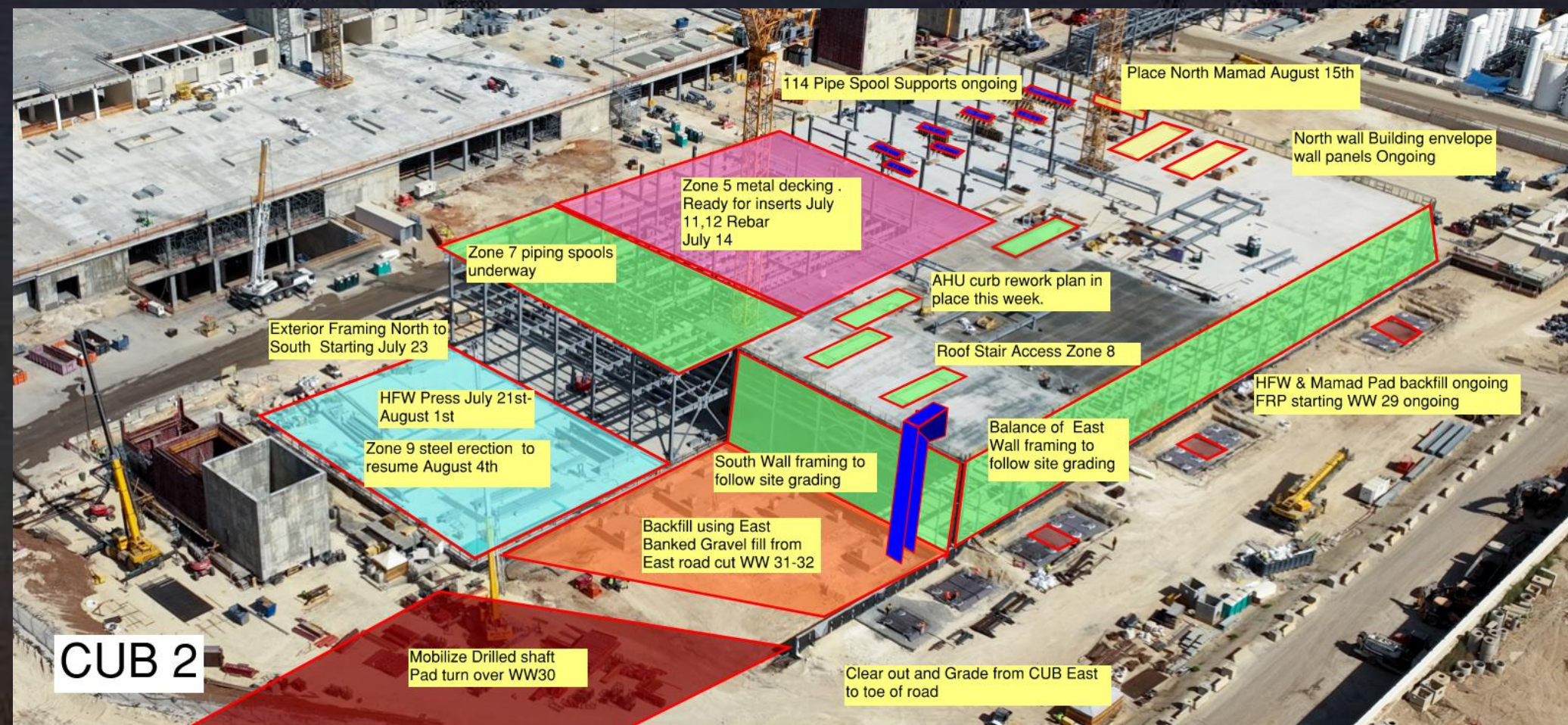




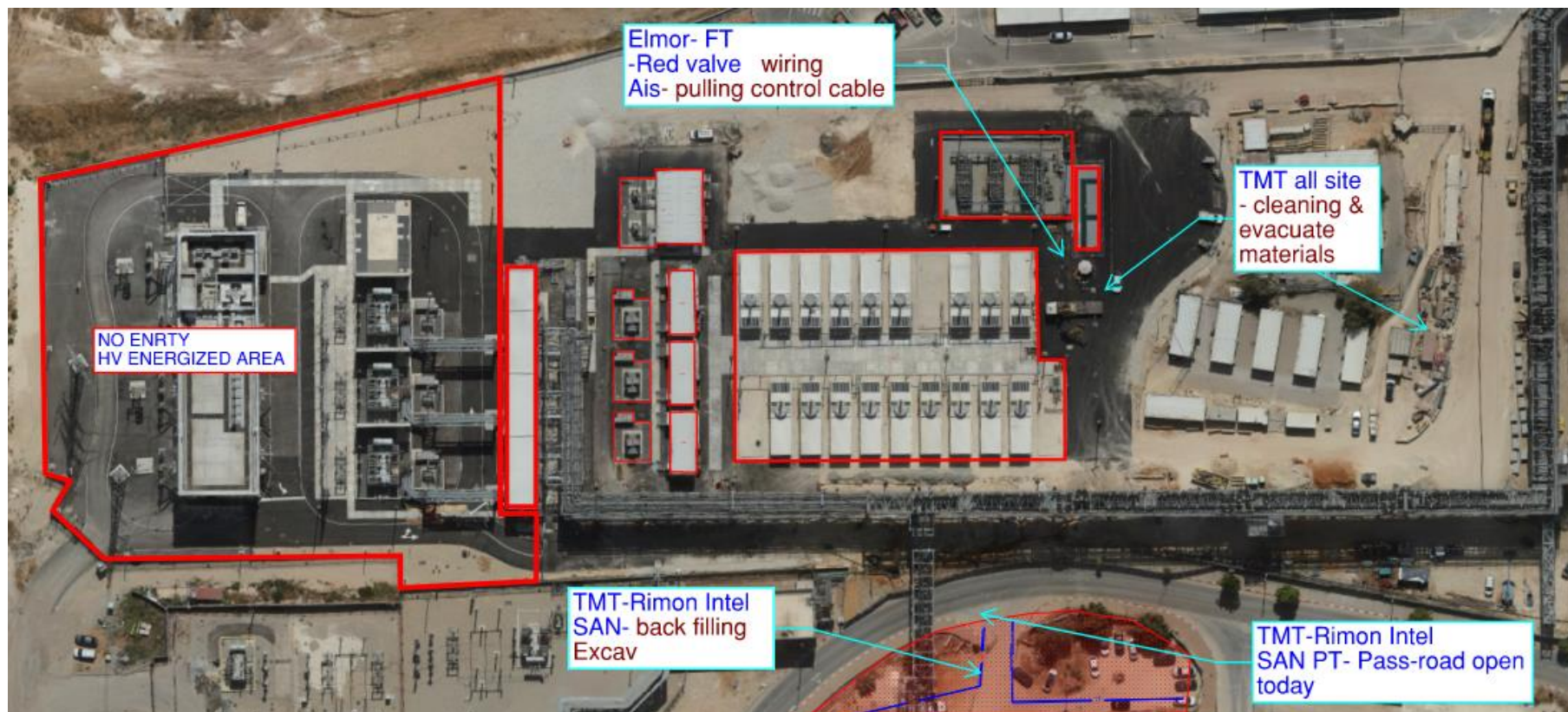














Trench lids will be instal 5/9/24  
complete your sow before.

crane  
locati  
on

#### HRA AREA

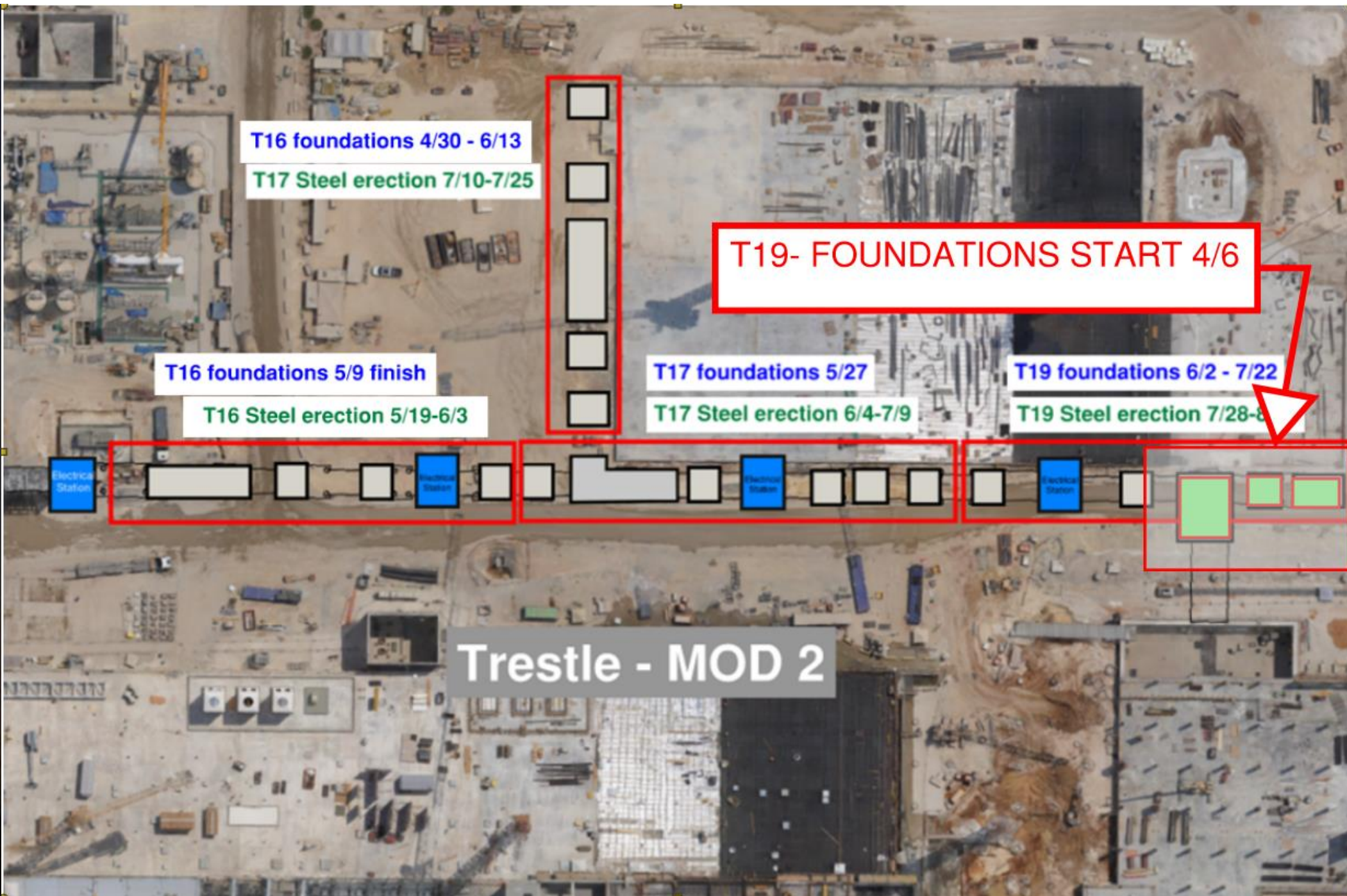
Planning machinery-  
truck, boom lift, fork  
... etc work- requires  
coordination in  
advance Hcc Sup &  
meet the requirement  
before starting work  
to insure not damage  
facilities

For all subs  
for compeleting SOW to submit microshedule till  
25.07.24 for each sow , including disconnect &  
evacuate trailers & material & must comply with  
P6 SCHEDULE 100%  
after NEY area turned to intel need sipp all NEY











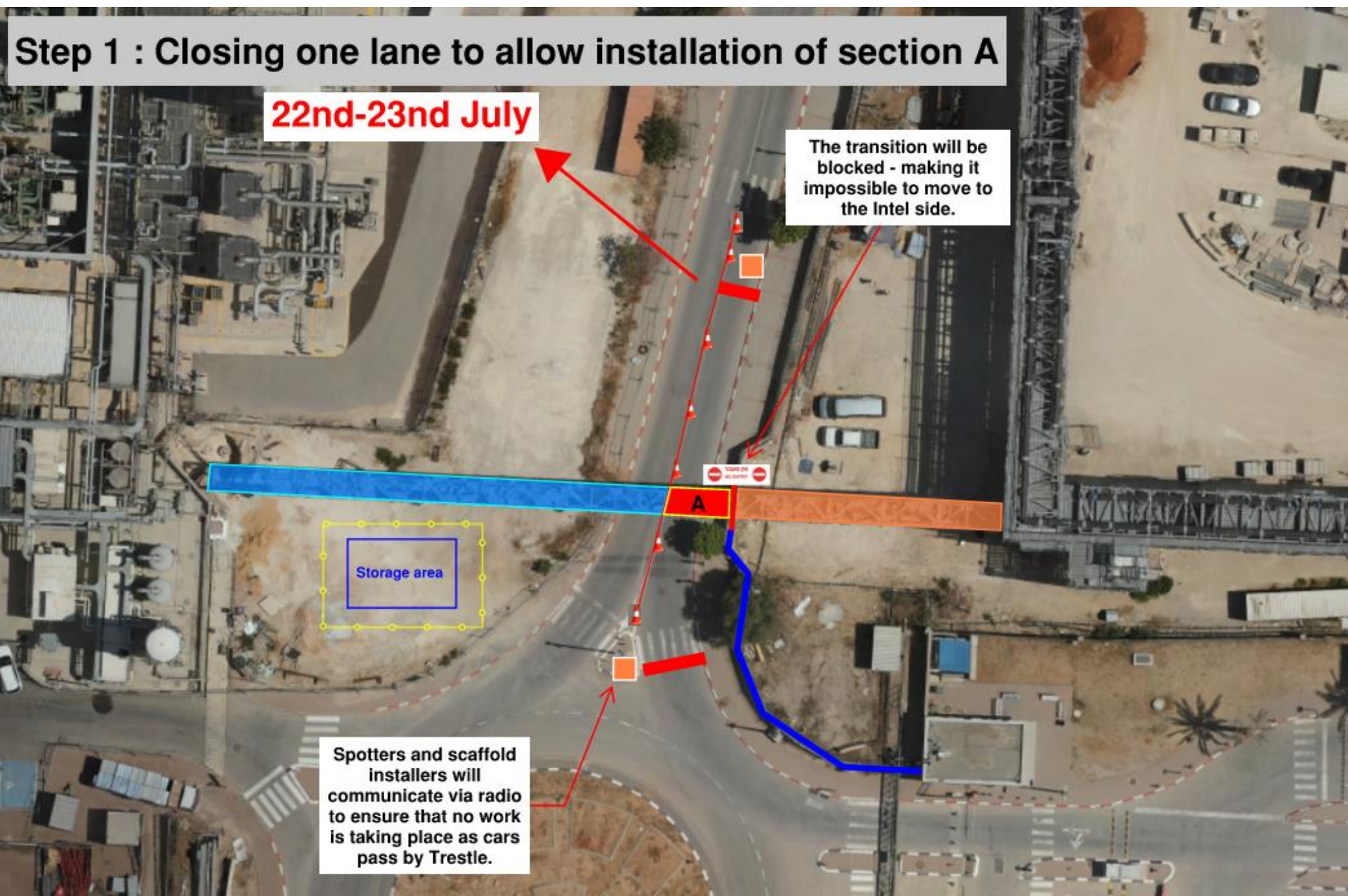


BSGS









## Step 1 : Closing one lane to allow installation of section A

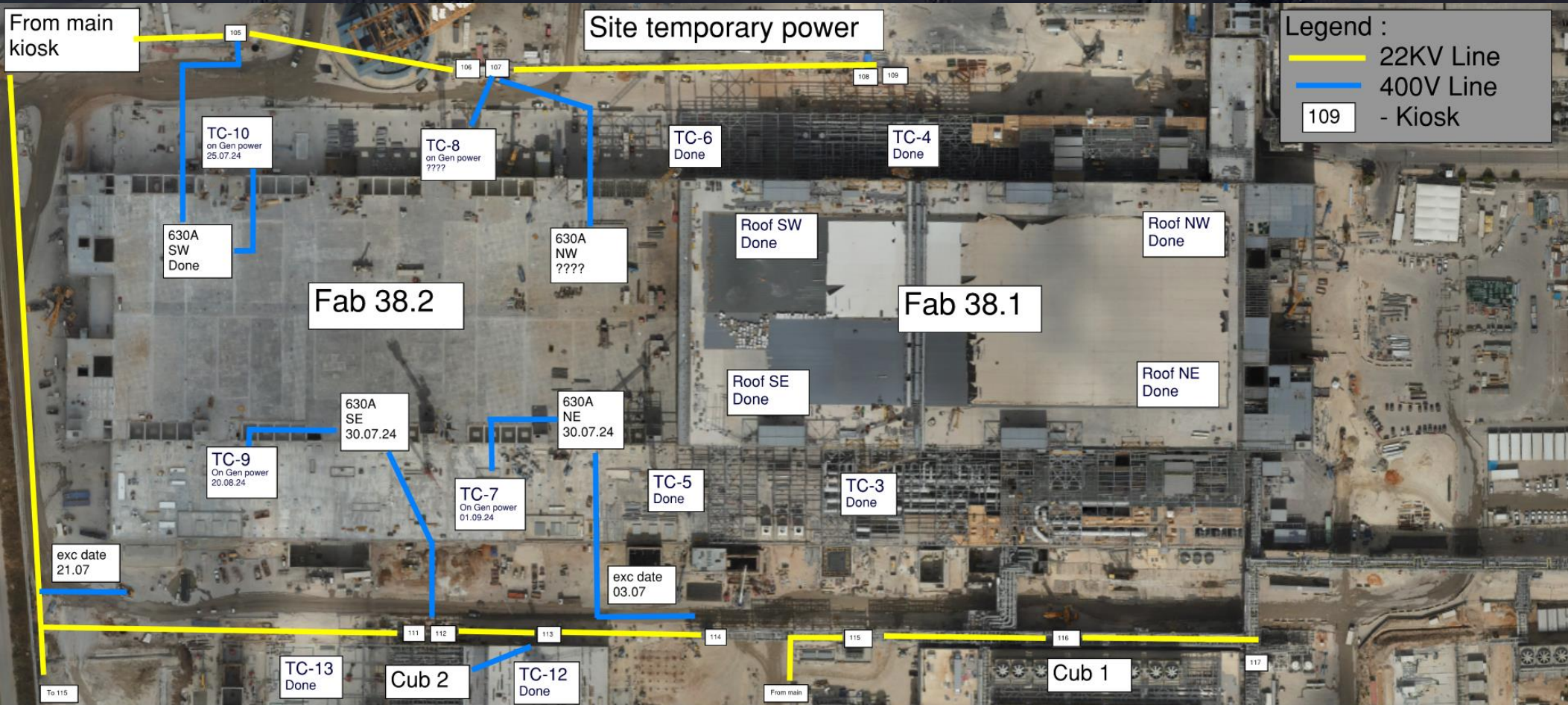
22nd-23rd July

The transition will be blocked - making it impossible to move to the Intel side.

Spotters and scaffold installers will communicate via radio to ensure that no work is taking place as cars pass by Trestle.



# Daily Coordination Meeting





# Daily Coordination Meeting

Site Logistics  
North Gate B

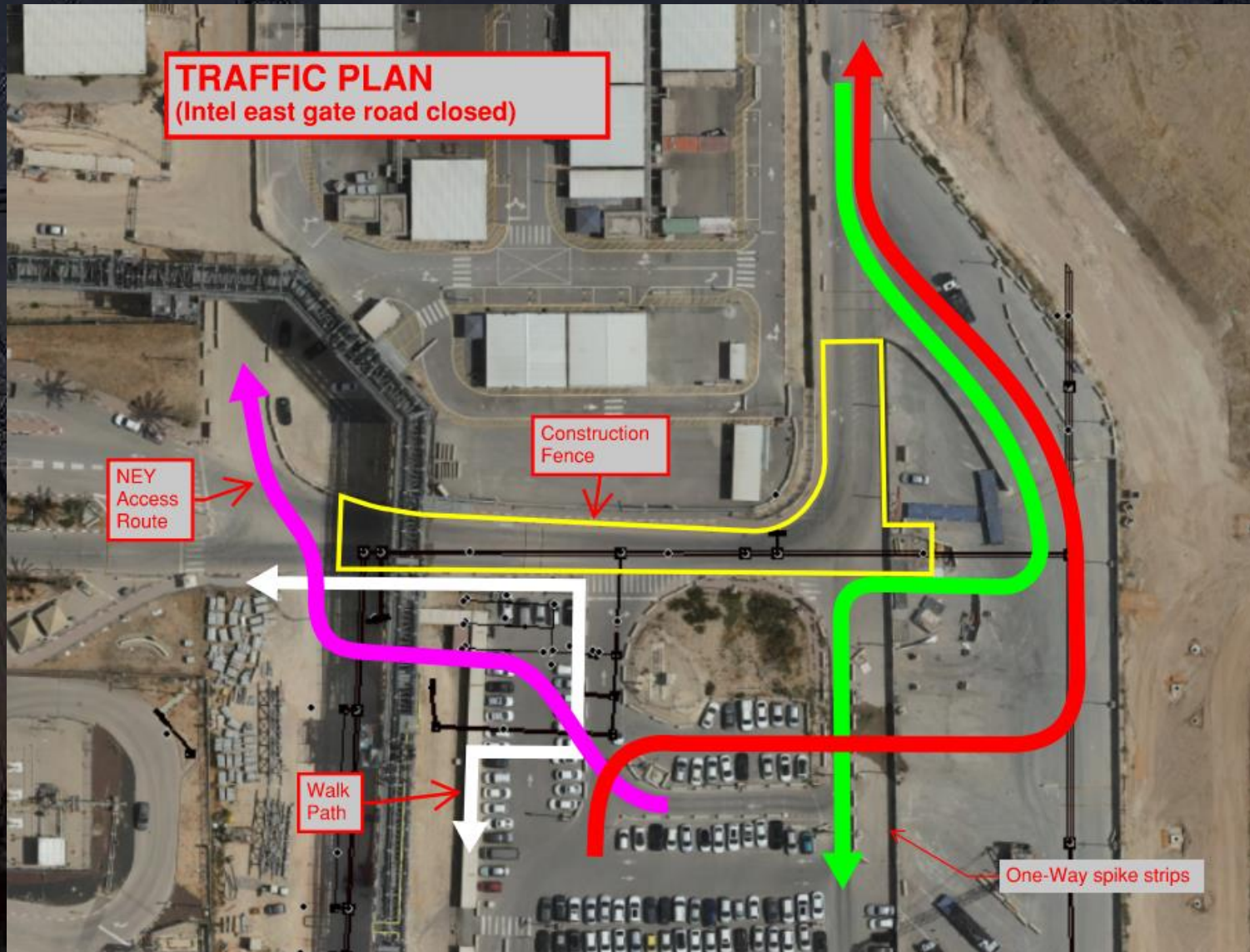




# Daily Coordination Meeting

Site Logistics

Traffic Plan

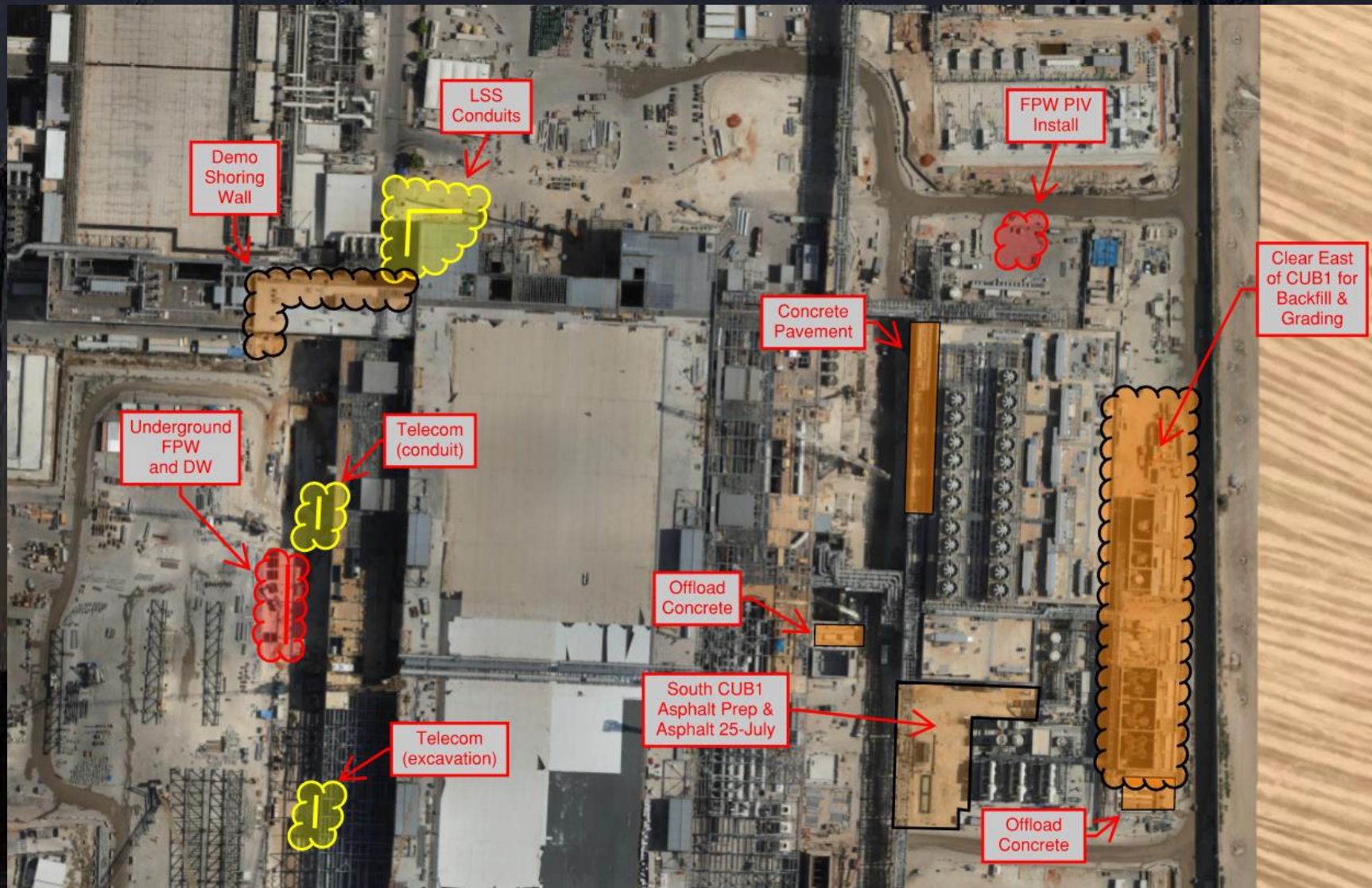




# Daily Coordination Meeting

## Site Logistics

### North





# Daily Coordination Meeting

Site Logistics

South

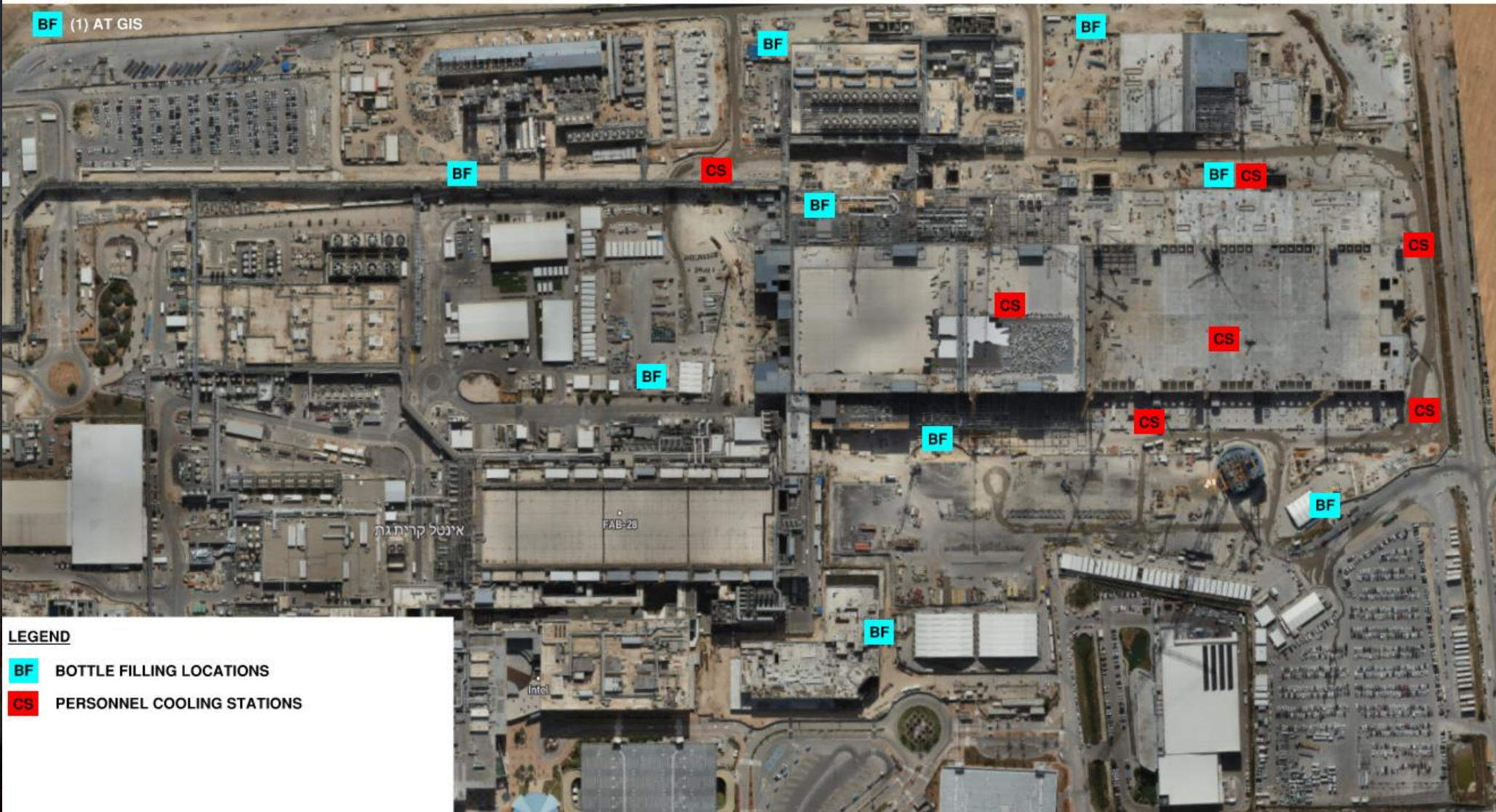




# Daily Coordination Meeting

## WATER BOTTLE FILLING & PERSONNEL COOLING STATIONS

BF (1) AT GIS









## Commissioning

### WW29

TCC Predicted: **61** (249 past due)

TCC Completed: **236**

Delta: **+175** (-74 total)

CCC Predicted: **58** (17 past due)

CCC Completed: **67**

Delta: **+9** (-8 total)

GT Predicted: **40** (51 past due)

GT Completed: **67**

Delta: **+27** (-24 total)




# Smoking- Fire Prevention


- We had a small fire on the project Friday from a poorly extinguished cigarette being carelessly thrown on the ground.
- Reminder- smoking is allowed only in designated areas.
- Cigarettes need to be extinguished and disposed of properly. Workers (and everyone) need to stop throwing cigarettes on the ground.
- We are increasing our disciplinary action measures against violators of the site smoking policy.





# Heat Index- July 22<sup>nd</sup>

	temperature (°F)																
	80	82	84	86	88	90	92	94	96	98	100	102	104	106	108	110	
Relative Humidity (%)	40	80	81	83	85	88	91	94	97	101	105	109	114	119	124	130	136
	45	80	82	84	87	89	93	96	100	104	109	114	119	124	130	137	
	50	81	83	85	88	91	95	99	103	108	113	118	124	131	137		
	55	81	84	86	89	93	97	101	106	112	117	124	130	137			
	60	82	84	88	91	95	100	105	110	116	123	129	137				
	65	82	85	89	93	98	103	108	114	121	128	136					
	70	83	86	90	95	100	105	112	119	126	134						
	75	84	88	92	97	103	109	116	124	132							
	80	84	89	94	100	106	113	121	129								
	85	85	90	96	102	110	117	126	135								
	90	86	91	98	105	113	122	131									
95	86	93	100	108	117	127											
100	87	95	103	112	121	132											

 Caution

 Extreme Caution

 Danger

 Extreme Danger

## Extreme Caution

- Ensuring water and shaded areas available
- Acclimating workers
- Emergency planning and response
- Training workers and supervisors on the signs of heat stress and preventative measures
- Modified work schedules and/or rotating out workers
- Monitoring of workers for signs of heat stress